

## “ADOPTION OF IMPROVED PADDY CULTIVATION PRACTICES AMONG THE FARMERS IN DURG DISTRICT, CHHATTISGARH”

### Abstract

The present study was conducted in Durg district of Chhattisgarh state during the years 2022–23 to study the ~~adoption of improved paddy cultivation practices by the farmer~~farmers' adoption of improved paddy cultivation practices. ~~A total of 120 respondents were randomly selected based on the criteria that no previous study had been undertaken there till~~One hundred twenty respondents were randomly selected based on the criteria that no previous study had been undertaken ~~date~~. Farmers were personally interviewed using a pre-tested interview schedule. The majority of respondents had a high (15.83%), medium (53.34%), ~~to~~ and low (30.83%) adoption level. Hence, ~~there is a necessity to provide training programmes through KVKs and the Agricultural Departments for the improvement of paddy cultivation methods to~~it is necessary to provide training programs through KVKs and the Agricultural Departments to improve paddy cultivation methods so that the farmers can ~~the farmers in order to~~ enhance their adoption levels of paddy production technology. The independent variables, namely age, gender, education, annual income, farming experience, sources of information, social participation, extension contacts, land holding, economic motivation, and risk orientation, were positively and significantly correlated with the adoption behaviour of paddy growers towards improved paddy production practices.

Keywords: Adoption, Improved cultivation, Paddy

### Introduction

Rice (*Oryza sativa*) is the most sustainable food, accounting for more than half of the world's population. The importance of rice as a staple food stems from the recognition that rice-based industries are essential for food security, poverty reduction, and health improvement. Rice is grown during summers and winters in India and other countries. Rice is the most important food in terms of human nutrition and caloric intake, accounting for more than one-fifth of all calories consumed by people worldwide. Rice is a monocotyledonous plant ~~that is usually grown as an annual plant~~usually grown annually, but it can also survive as a perennial plant in tropical regions. World cultivation reaches 164.19 million hectares.

Comment [AP1]: Mention about the population

and annual production reaches approximately 505.4 million tons. Asia is the world's largest continent and produces and consumes more than 90% of the world's rice. [4.]

Chhattisgarh, one of ~~the largest paddy producer state in India~~ India's largest paddy producer states, has ideal climate conditions and soil for developing paddy. The central plains of Chhattisgarh are known as Rice Bowl of Central India. With an average yearly precipitation of around 1,207 mm, the ~~entire cultivated zone (all crops) of the state~~ state's entire cultivated zone (all crops) is 47.75 lakh hectares, which is 34 percent of the ~~state's~~ state's total geographical area. [3.]

It must be understood that only one-third of the rice zone within the nation has irrigation facilities. Few information exist on the water necessities of the crop, ~~but~~ Still, this knowledge is more experimental and a great deal of investigation is required to understand the soil-water-plant relationship. Also, the ~~productivity of the state is quite low as~~ state's productivity is quite low compared to other states. Thus, the farmers live in tough conditions; they lack any kind of facilities.

The present investigation was subsequently planned to ~~think about the adoption behaviour of the farmers~~ consider the farmers' adoption behavior towards improved paddy production practices. Such an examination will be valuable for agricultural colleges, research stations, state government, marketing departments ~~and district administration, as well as for better production and to create~~, and district administration, as well as for better production and creating a conducive environment for paddy cultivation within ~~the state of~~ Chhattisgarh.

## **Research ~~methodology~~ Methodology**

---

The research methodology must have a theoretical foundation for its success. The present study was conducted in Durg district of Chhattisgarh state ~~during the years from~~ 2022–23. There are ~~3~~ three blocks in ~~the~~ Durg district, and ~~out of those, Durg and Patan blocks were chosen~~ Durg and Patan blocks were chosen out of those. A total of 20 villages were ~~chosen from these two blocks randomly~~ randomly chosen from these two blocks for primary data collection. A total of 120 respondents were selected randomly from the selected villages. A pretested interview schedule was used for the collection of data. The collected data were classified, tabulated, and ~~analysed~~ analyzed in light of the objectives. Descriptive

research design was followed, and the variables were measured by ~~utilising~~ utilizing appropriate scales and methods adopted by different researchers in the past with few adjustments. Suitable statistical tools were utilized to draw the inferences.

## Adoption

---

Adoption is a decision to make full use of an innovation as the best course of action available.

In this study, the adoption of different paddy cultivation practices were listed. A total of 14 statements from land preparation up to harvesting were recorded by consulting with experts. The responses were measured by giving 3–1 scores for fully adopted, partially adopted and not adopted separately for each practice. Hence, the maximum possible score of the respondent that could be ideal was 42 and the least score was 14. Based on respondents for each statement, frequency and percentage were calculated to clarify things about adoption. The overall adoption of the respondents was grouped into three categories: low, medium, and high, using mean and standard deviation as a degree of the check. The results were explained in frequency and percentage. According to these data, adoption levels such as low, medium and high were described.

## Results and discussion

---

The results of the present research study have been presented ~~on the basis of~~ based on the analysis of data using suitable statistical tools and techniques and ~~in relation to~~ concerning the specific objective of the research study.

### 1. Socio-economic profile of the respondents.

**Table 1. Distribution of respondents according to their socio-economic profile.**

Category	Frequency	Percentage
<b>Age</b>		
Young age (<35 years)	26	21.67
Middle age (36-63 years)	73	60.83
Old age (>64 years)	21	17.50

<b>Gender</b>		
Male	97	80.83
Female	23	19.17
<b>Caste</b>		
General	75	62.50
OBC	20	16.66
ST	16	13.33
SC	9	7.51
<b>Occupation</b>		
Farming only	52	43.33
Farming and farm labour	36	30.00
Farming and other occupation	32	26.67
<b>Education</b>		
Illiterate	41	34.17
Primary	35	29.17
Secondary	28	23.34
High school	8	6.67
Above high school	5	4.17
Graduate and above	3	2.50
<b>Annual income</b>		
Low (<75,000 rs)	29	24.16
Medium(75,001 – 2,00,000rs)	59	49.18
High (> 2,00,000 rs )	32	26.66
<b>Land holding</b>		
Marginal ( <1 ha )	27	22.50
Small (1-2 ha)	39	32.50
Medium (2-4 ha)	35	29.17
Semi- medium (4-10 ha)	11	9.17
Large (> 10 ha)	8	6.66

<b>Family type</b>		
Nuclear	46	38.33
Joint	74	61.67
<b>Farming experience</b>		
Low (<10 years)	11	9.17
Medium (10-20 years)	75	62.50
High (> 20years)	34	28.33
<b>Social participation</b>		
Non member	40	33.34
Member of one organization	61	50.83
Member of two organization	13	10.83
Member of more than two organization	6	5.00
<b>Sources of information</b>		
Low	18	15.00
Medium	77	64.17
High	25	20.83
<b>Extension contact</b>		
Low	44	36.67
Medium	64	53.33
High	12	10.00
<b>Economic motivation</b>		
Low	20	16.67
Medium	54	45.00
High	46	38.33
<b>Risk orientation</b>		
Low	44	36.67
Medium	54	45.00
High	22	18.33

Table 1 shows that:

- a. **Age:** It was found that the majority (60.83%) of respondents belonged to the middle-aged group, i.e., between 36-63 years of age.
- b. **Gender:** It was found that the majority (80.83%) of the respondents were males.
- c. **Caste:** It was found that the majority (62.50%) of the respondents belonged to the general category.
- d. **Occupation:** It was found that the majority (43.33%) of the respondents were engaged in only farming activities.
- e. **Education:** It was found that the majority (34.17%) of respondents were classified as illiterate.
- f. **Annual income:** It was found that the majority (49.18%) of respondents were found to be in the medium income earning group, with annual earnings ranging between 75,001- 2,00,000 rupees.
- g. **Land holding:** It was found that the majority (32.50%) of respondents belonged to the small land holding group.
- h. **Family type:** It was found that the majority (61.67%) of respondents belonged to joint families.
- i. **Farming experience:** It was found that the majority (62.50%) of respondents had medium farming experience ranging between 10-20 years.
- j. **Social participation:** It was found that the majority (50.83%) of respondents were members of any one of the organisations.
- k. **Sources of information:** It was found that the majority (64.17%) of respondents had medium-level sources of information.
- l. **Extension contact:** It was found that the majority (53.33%) of respondents had a medium level of extension contact.
- m. **Economic motivation:** It was found that the majority (45.00%) of respondents had a medium level of economic motivation.
- n. **Risk orientation:** It was found that the majority (45.00%) of respondents had a medium level of risk orientation.

**2. Activity wise adoption level of respondents.**

**Table 2. ~~Activity-Activity~~-wise ~~distribution-Distribution~~ of respondents according to their level of adoption.**

S.No.	Particulars	FA	PA	NA
		F (%)	F (%)	F (%)

Farming Practices				
1.	Crop Rotation Method	34 (28.33)	28 (23.33)	58 (48.34)
2.	Hybrid Varieties	25 (20.83)	41 (34.17)	54 (45.00)
3.	Organic farming	32 (26.67)	36 (30.00)	52 (43.33)
4.	Integrated Farming System	33(27.50)	42(35.00)	45(37.50)
New Technology				
5.	Precision Agriculture	26(21.67)	21(17.50)	73(60.83)
6.	Rice Transplanter	34(28.33)	35(29.17)	51(42.50)
7.	SRI Method of Planting	34(28.33)	33(27.50)	53(44.17)
Management Practices				
8.	Bio-fertilizers	27(22.50)	53(44.17)	40(33.33)
9.	Mulching	26(21.67)	49(40.83)	45(37.50)
10.	Bio-pesticides	23(19.17)	48(40.00)	49(40.83)
Post-Harvest Technology				
11.	Machine Thresher	31(25.83)	42(35.00)	47(39.17)
12.	Parboiling Method	18(15.00)	37(30.83)	65(54.17)
13.	Mechanical Dryer	27(22.50)	40(33.33)	53(44.17)
14.	Milling	38(31.67)	35(29.17)	47(39.16)

FA= Fully Adopted, PA= Partially Adopted, NA= Not Adopted, F= Frequency, % = Percent

Table 2 represents the ~~distribution~~ Distribution of respondents according to their level of adoption.

- a. **Crop rotation:** ~~Majority~~ The majority (48.34%) of the respondents had not adopted the practice, it was followed by 28.33% who had fully adopted the practice, and finally, 23.33% of the respondents who had partially adopted the practice.
- b. **Hybrid varieties:** ~~Majority~~ The majority (45.00%) of the respondents had not adopted the practice, it was followed by 34.17% who had partially adopted the practice, and finally, 20.83% of the respondents who had fully adopted the practice.
- c. **Organic farming:** ~~Majority~~ The majority (43.33%) of the respondents had not adopted the practice, it was followed by 30.00% who had partially adopted the practice, and finally, 26.67% of the respondents who had fully adopted the practice.

- d. **Integrated farming system:** ~~Majority~~ The majority (37.50%) of the respondents had not adopted the practice, it was followed by 35.00% who had partially adopted the practice, and finally, 27.50% of the respondents who had fully adopted the practice.
- e. **Precision agriculture:** ~~Majority~~ The majority (60.83%) of the respondents had not adopted the practice, it was followed by 21.67% who had fully adopted the practice, and finally, 17.50% of the respondents who had partially adopted the practice.
- f. **Rice transplanter:** ~~Majority~~ The majority (42.50%) of the respondents had not adopted the practice, it was followed by 29.17% who had partially adopted the practice, and finally, 28.33% of the respondents who had fully adopted the practice.
- g. **SRI method:** ~~Majority~~ The majority (44.17%) of the respondents had not adopted the practice, it was followed by 28.33% who had fully adopted the practice, and finally 27.50% of the respondents who had partially adopted the practice.
- h. **Bio-fertilizers:** ~~Majority (44.17%) of the respondents had partially adopted the practice, it was followed by 33.33% who had not adopted the practice, and finally~~ The majority (44.17%) of the respondents had partially adopted the practice, followed by 33.33% who had not adopted the practice, and 22.50% of the respondents who had fully adopted the practice.
- i. **Mulching:** ~~Majority~~ The majority (40.83%) of the respondents had partially adopted the practice, ~~it was followed by 37.50% who had not adopted the practice, and finally~~ followed by 37.50% who had not adopted the practice, and 21.67% of the respondents who had fully adopted the practice.
- j. **Bio-pesticides:** ~~Majority~~ The majority (40.83%) of the respondents had not adopted the practice, it was followed by 40.00% who had partially adopted the practice, and finally 19.17% of the respondents who had fully adopted the practice.
- k. **Machine thresher:** ~~Majority~~ The majority (39.17%) of the respondents had not adopted the practice, it was followed by 35.00% who had partially adopted the practice, and finally 25.83% of the respondents who had fully adopted the practice.
- l. **Parboiling:** ~~Majority~~ The majority (54.17%) of the respondents had not adopted the practice, it was followed by 30.83% who had partially adopted the practice, and finally, 15.00% of the respondents who had fully adopted the practice.
- m. **Mechanical dryer:** ~~Majority~~ The majority (44.17%) of the respondents had not adopted the practice, ~~it~~ was followed by 33.33% who had partially adopted the practice, and finally, 22.50% of the respondents who had fully adopted the practice.

n. **Milling:** Majority (39.16%) of the respondents had not adopted the practice, it was followed by 31.67% who had fully adopted the practice, and finally The majority (39.16%) of the respondents had not adopted the practice, followed by 31.67% who had fully adopted the practice, and 29.17% of the respondents who had partially adopted the practice.

3. **Overall-The overall** adoption level of the farmers on paddy cultivation practices

Table 3. Overall ~~distribution~~ Distribution of respondents according to their level of adoption.

S.No.	Category	Frequency	Percentage
1.	Low	37	30.83
2.	Medium	64	53.34
3.	High	19	15.83
	<b>Total</b>	<b>120</b>	<b>100.00</b>

Table 3 clearly represents the overall ~~distribution~~ Distribution of the respondents according to their level of adoption. The majority of the respondents had a medium level of adoption, i.e., 53.34%, followed by 30.83% of the respondents who had a low level of adoption, and finally 15.83% of the respondents who had a high level of adoption.

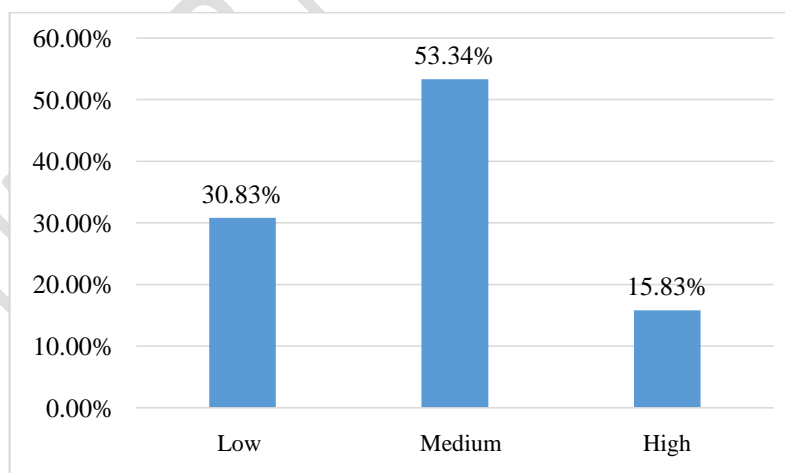


Figure 1. Overall Distribution of respondents according to their level of adoption.

4. Association between selected independent variables with adoption level of respondents.

Table 4. Association between selected independent variables with adoption level of respondents.

S.No.	Variables	Correlation coefficient (r)
1.	Age	0.948*
2.	Gender	0.803*
3.	Caste	-0.195 <sup>NS</sup>
4.	Occupation	0.075 <sup>NS</sup>
5.	Education	0.989*
6.	Annual income	0.877*
7.	Landholding	0.552**
8.	Family type	-0.265 <sup>NS</sup>
9.	Farming experience	0.717*
10.	Social participation	0.993*
11.	Sources of information	0.869*
12.	Extension contact	0.969*
13.	Economic motivation	0.335**
14.	Risk orientation	0.946*
* = Correlation is significant at the 0.01 level of probability		
** = Correlation is significant at the 0.05 level of probability		
NS = Non-significant		

Comment [AP2]: This variable is not suitable for correlation

Comment [AP3]: This variable is not suitable for correlation

Comment [AP4]: This variable is not suitable for correlation

From this ~~above Table 4~~ Table 4 above, we can conclude that the independent variables, namely age, gender, education, annual income, farming experience, sources of information, social participation, extension contacts, and risk orientation, were positively and significantly correlated with the adoption behaviour of paddy growers towards improved paddy production practices at 0.01% probability, while the independent variables, land holding and economic motivation were significantly correlated at 0.05% probability. Therefore, the null hypothesis ~~was rejected for these variables~~ for these variables was rejected. The independent variables, such as occupation, were found to be non-significant, while independent variables, such as

caste and family type, were found to be negatively and non-significantly correlated with the adoption level of paddy growers at both 0.01% and 0.05% of probability, respectively. Therefore, the null hypothesis was accepted for these variables.

## Summary and conclusion

---

It was concluded that the socio-economic profile of the sample group was medium level. It was concluded that the ~~adoption of improved paddy production practices by the farmers~~ farmers adopted improved paddy production practices at a medium level. The majority of the farmers had partially adopted most of the practices. Hence, universities, agricultural departments, KVKs, and other institutes ~~have the responsibility to motivate~~ are responsible for motivating the farmers to ~~better adopt the cultivation practices~~ adopt the cultivation practices better, leading to a better income and, in turn, an improved standard of living for the paddy farmers. The independent variables, namely age, gender, education, annual income, farming experience, sources of information, social participation, extension contacts, land holding, economic motivation, and risk orientation, were positively and significantly correlated with the adoption behavior of paddy growers towards improved paddy production practices.

## References

---

- [1.] **Channamallikarjuna, D. and Sadaqath, Syed (2017).** Knowledge and adoption of SRI method paddy growers. *Agric. Update*, 12(2): 277-280; DOI: 10.15740/HAS/AU/12.2/277-280.
- [2.] **Dub, Rajvik, Ahmad, Jahanara (2023).** Knowledge of Farmers towards Improved Wheat Production Technology in Kathua District of Jammu and Kashmir. *International Journal for Research Trends and Innovation* Volume 8, Issue 4 ISSN: 2456-3315
- [3.] **Gupta, Swaminath.** CHHATTISHGARH: RICE BOWL OF CENTRAL INDIA. <https://krepl.in/chhattishgarh-rice-bowl-of-central-india/>
- [4.] **Meshram, Shubham Anil, Jakkawad, Sunildutt, Rajeshwar and Ayodhya, Giakwad (2023).** Knowledge level of recommended rice cultivation practices among the cultivators. *The Pharma Innovation Journal* 2023; 12(5): 3982-3987

- [5.] **Mohammad, Emran, Sudheendra, M., Sahana, S., Salimath, Sarvajna B. and Mallikarjuna, H. B. (2020).** Knowledge and Adoption of Paddy Cultivation Practices in Hosanagara Taluk of Shivamogga District. *Int.J.Curr.Microbiol.App.Sci* (2020) 9(9): 1666-1672
- [6.] **Raj, R.K., Behera, M., Ray, P. and Mishra, J.R. (2012).** Knowledge and adoption of improved practices in rice cultivation by farmers of Odisha. *Indian Journals* Vol. 49 No. 1, 2012 (50-52)
- [7.] **Sumon, S.M.M., Shovon, S.C., Mahjuba, A., Mehraj, H. and Uddin, AFM Jamal (2014).** Adoption of Improved Rice Cultivation Practices by Farmers in Relation to their Characteristics. *Int. J. Bus. Soc. Sci. Res.* 2(1): 13-19.

UNDER PEER REVIEW