

# APPLICATION OF AEROMAGNETIC DATA TO DELINEATE THE MINERALIZATION ZONES WITHIN SHANGA (SHEET 96) NORTHWEST NIGERIA

## Abstract

The goal of the present study is to identify and delineate the mineralization zones and depths of prospective mineral occurrences in Shanga (sheet 96), parts of the northwest Nigerian basement complex, by analyzing aeromagnetic data. This was accomplished by reducing the residual magnetic intensity (RMI) data for the research area to magnetic the equator (RTE), which was followed by the application of the three-source edge detection/interpretation techniques; analytic signal (AS), first and second vertical derivatives (FVD and SVD). The AS approach of depth estimation was also applied to the Shanga RMI data to establish the minimum depth at which the minerals are likely to occur. Using FVD map, structures that may be responsible for mineralization within the study area were identified and confirmed to eastern basement portion of the study area. The primary structural trend in the region is ENE-WSW, followed by NE-SW, WNW-ESE, NW-SE, and NNE-SSW. The high analytic signal within the schist has been attributed to intrusions and solidification of mineralization fluids with structural linkages, allowing the area's mineralization zones to be identified. The analytic signal map showed amplitudes ranging from 0.001 nT/m to 0.421 nT/m. Additionally, the SVD map showed mineralization boundaries that matched the AS map's mineralization zones. The analytic signal depth method revealed a minimum depth of occurrence for the minerals ranging from 0 to 11.457 m, and the mineralization zones delineated have one or more structural lineaments passing through them, confirming that they are responsible for mineralization fluid passage and mineralization hosting within the study area.

**Keywords: Depth, Mineralization, AS, FVD and SVD**

## Introduction

Nigerian mineralization is dependent on the geology and rock structure (Ajakaiye *et al.*, 1991; Tawey *et al.*, 2021 and Augie *et al.*, 2022) and to identify prospective rock types and lineaments that serve as conduits for mineralization fluids during magmatic events and serve as hosts for most solid minerals. The recently acquired high-resolution airborne potential data may proffer a solution (Amigun and Anu, 2013). Its application in mineral exploration, especially around hydrothermal alteration prospects, is to accentuate the structural regime in the region to define suitable pathways that may have supported hydrothermal fluid circulation systems relevant to mineral accumulation (Tawey *et al.*, 2021; 2020; Sani *et al.*, 2019; Akinlalu *et al.*, 2018 and Uwiduhaye *et al.*, 2020). The current study region lies in the north-

western Nigerian basement complex, which is made up of the migmatite gneiss complex and the schist belts and is partially to the west of the sedimentary Sokoto basin. Most of the country's solid minerals, according to historical accounts, can be found within the western half of Nigeria or in the nation's schist belts (Figure 1). Reconnaissance surveys are necessary in any geophysical fieldwork including solid mineral exploration and the present study is motivated by the fact that structures typically play a key role in mineralization studies. Since geophysical methods are essential in characterizing geological features including faults, folds, shear zones, and other favorable places for mineralization, they are widely used globally as fundamental tools for geological interpretations (Saibi *et al.*, 2016; Mohamed *et al.*, 2019 and Azizi *et al.*, 2015).

Numerous studies have been conducted within the schist belts region that describe the hydrothermally altered zones which historically, have hosted most solid minerals in Nigeria especially gold (Akinlalu, 2023; Tawey *et al.*, 2021 & 2023; Joseph *et al.* 2023; Kudamnya *et al.* 2018; Augie *et al.* 2022, Augie & Sani 2020; Olomoa *et al.* 2022a and 2022b, Taofeeq, 2020; Umaru and Kankara, 2020; Umaru *et al.* 2022; Arogundade *et al.*, 2021). Since the purpose of the work is to identify mineralization zones and determine the depth at which mineralization may occur within the research area, the Roest *et al.* (1992) analytic signal magnetic source locating technique was applied to identify magnetic sources there. Additionally, derivatives (first and second vertical derivatives) are typically very effective tools for structural delineation (fault, joints, and fractures) and delineation of source boundaries (Foss, 2011). These tools were also applied to the magnetic data of the region for structural and boundary of source delineation with their depth of occurrence using the analytic signal depth method as proposed by Baranov, (1957) (that doesn't work as 1957 is 35 years before 1992) to delineate the source boundaries

### **Location and Topography of the Study Area**

The study area is in north-western portion of Nigeria, bordering Niger and Kebbi states, with boundaries that range from longitudes  $4^{\circ} 30'$  east to longitudes  $5^{\circ} 00'$  east and latitudes  $11^{\circ} 00'$  north to latitudes  $11^{\circ} 30'$  north (Fig. 1). The research area is somewhat **outcropping** Basement (NGSA, 2006; Obaje, 2009), and **sedimentary cover** (part of Iullemeden Basin) with topography that ranges from 132 m for low elevated portions around south-western part of the area (Koko, Tungan Magaje, Shanga, Dugu Tofo Ganwo and Nasarawa) to 352 m for extremely high elevated parts particularly regions north to south of Dakku town as gotten from interpretation of Digital Elevation Model (DEM) Shuttle Radar Topography Mission (SRTM) of the study region (Figure 2).

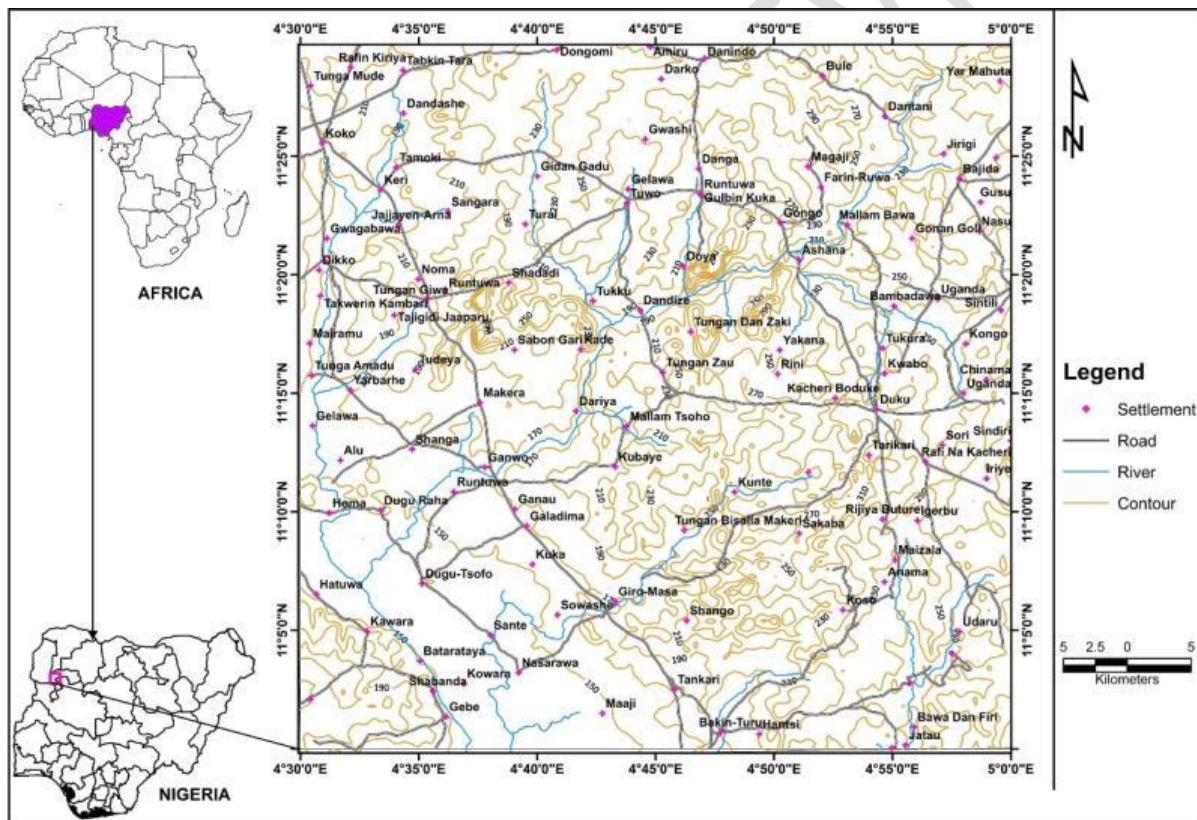


Figure 1: Location map of the study area (Adapted from Taweyet *et al.*, 2023a)

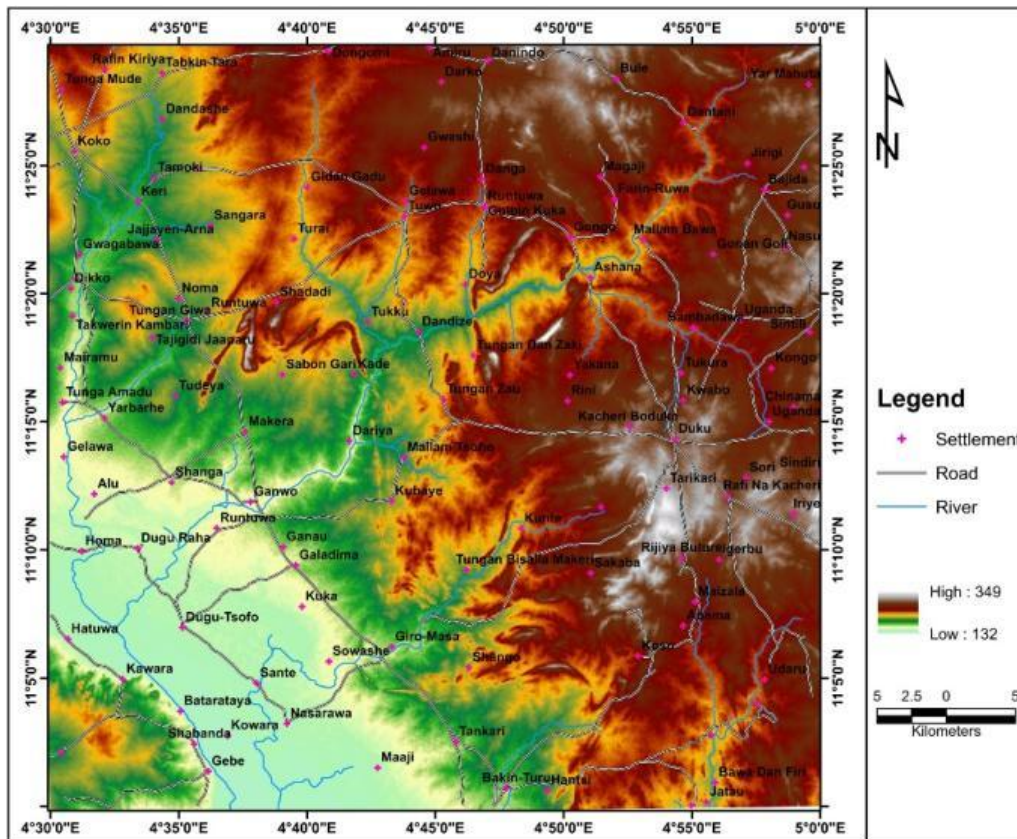


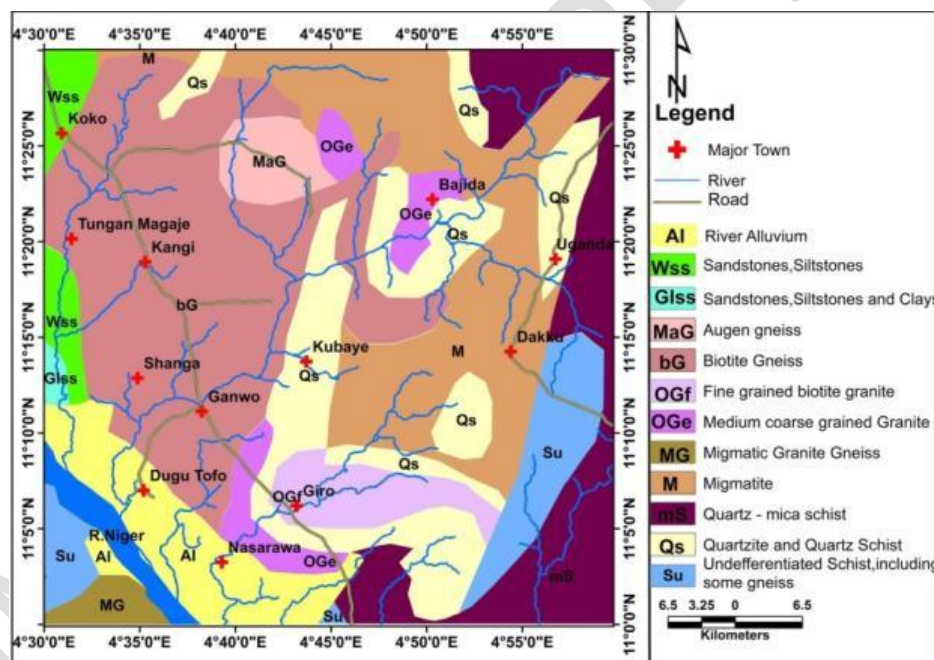
Figure 2: Digital Elevation Model (DEM) of the area

### Tectonic Settings and Geology of the Study Area

The research region is located south of the Tuareg Shield, between the West African and Congo Cratons, and is also a component of the Nigerian basement complex, which is tectonically a part of the Pan-African mobile belt (Black, 1980). It has been intruded by the Mesozoic calc-alkaline ring complexes (Young Granites) of the Jos Plateau, and Cretaceous and newer sediments are unevenly overlaid. The Liberian (2,700 Ma), Eburnean (2,000 Ma), Kibaran (1,100 Ma), and Pan-African cycles of deformation, metamorphism, and remobilization are believed to have produced at least four major orogenic cycles that produced the basement rocks (600 Ma). Extreme deformation, isoclinal folding, regional metamorphism, and significant migmatization were all present in the first three stages, which were also associated with these processes. Syntectonic granites and homogenous gneisses were produced as a result of broad migmatization, regional metamorphism, and granitization and gneissification that followed the Pan-African deformation (Abba, 1983). Extreme

deformation, isoclinal folding, regional metamorphism, and significant migmatization were all present in the first three stages, which were also associated with these processes. The final stages of this last deformation were followed by the late tectonic placement of granites and granodiorites, as well as related contact metamorphism. Faulting and fracture marked the end of the orogeny (Olayinka, 1992; Gandu *et al.*, 1986). The Pan-African Orogeny is thought to have produced the structures in the study area.

Fine-grained biotite granite, medium-grained biotite granite, River Alluvium, biotite gneiss, Augene gneiss, undifferentiated schist including phyllites, quartzite and quartz schists, quartz and mica schists, sandstones, siltstones, and clays, as well as migmatitic granite gneiss and migmatite, are among the rocks in this area (Figure 3).



**Fig 3: Geologic map of the area (Adapted from Taweyet *al.*, 2023a)**

### Source of Aeromagnetic Data

This analysis's aeromagnetic data came from the Nigerian Geological Survey Agency (NGSA). The high-resolution airborne data were gathered by Fugro Airborne Surveys. The survey was conducted in 2009 along a series of NW-SE flight lines of magnetic surveys flown at 500 m line spacing and 80 m terrain clearance.

## **Methodologies**

Total magnetic intensity data (TMI) of the research area were first separated into regional and residual data since the former are from shallow sources and the latter are from deeper sources. The residual magnetic intensity data (RMI) was reduced to the magnetic equator (RTE) using Oasis Montaj version 8.3. The RTE data was subjected to the first vertical derivative (FVD) filter to produce the FVD grid, which was then saved as a map. The map was then exported into Arc Map version 10.5 environments to manually delineate the structures within the study area. Additionally, the TMI data was subjected to the Analytic signal (AS) filter to create the analytic signal grid, which was also exported as a map. This map showed the boundaries of high magnetic zones that were identified as potential zones for mineralization and are places of interest for mineralization.

The border of the high magnetic source, which was delineated using the analytic signal approach as well as mapped structures, was also delineated using the second vertical derivative filter (SVD) applied to the RMI data reduced to the pole (RTE)Equator ?. The borders of the sources and the depth of the mineral occurrences were assessed using the analytic signal approach, and the structures defined from the FVD map were superimposed on both the AS and SVD maps to determine the coincidence of the structures drawn to source locations.

## **Theory of Methods**

### **Reduction to the Magnetic Equator (RTE)**

With the assumption that all magnetic fields seen in the study region are the result of induced magnetic effects, the application of the RTE technique is to create a magnetic map equivalent to what would have been obtained if the area had been surveyed at the magnetic equator. Data that was collected while the earth's magnetic field was inclined is transformed into data that would have been collected while the magnetic field was vertical by this filter. Anomalies are

centered over portions(? Portions) where their sources are located using this technique at low magnetic latitudes. This technique can simplify data interpretation without sacrificing its geophysical significance. We use the equation below for RTE transformation. **Reference !**

$$L(\theta) = \frac{[\sin(I) - i \cos(I) \cos(D-\theta)]^2 X(-\cos^2(D-\theta))}{[\sin^2(I_a) + \cos^2(I_a) \cos^2(D-\theta)] X[\sin^2(I) + \cos^2(I) \cos^2(D-\theta)]} \text{ if } (\backslash I_a \backslash) < (\backslash I \backslash), I_a = 1 \quad (1)$$

Where  $I$  represent the geomagnetic inclination,  $I_a$  is the inclination for amplitude correction,  $D$  represents the geomagnetic declination,  $\sin(I)$  is the amplitude component while  $i \cos(I) \cos(D-\theta)$  is the phase component. **(cos or Cos ?**

### **Vertical derivatives**

Vertical derivative vertical gradient filters accentuate short-wavelength components of the field at the expense of longer wavelengths (Foss, 2011). Vertical derivative filters are generally applied to gridded data using FFT (Fast Fourier Transform) filters. Various vertical derivatives of the magnetic field can be computed by multiplying the amplitude spectra of the field by a factor of the form:

$$\frac{1}{n} [(U^2 + V^2)^{\frac{1}{2}}]^n \quad (2)$$

where  $n$  is the order of the vertical derivative, and  $(U, V)$  is the wavenumber corresponding to the  $(x, y)$  directions respectively.

### **Analytic signal method (AS)**

The AS allows for the analysis of low-latitude magnetic fields without the worries of the RTP operator since it is less sensitive to the inclination of the geomagnetic field than the original TMI data. Gradient enhancement is a technique for AS that is connected to magnetic fields using derivatives. Roest *et al.* (1992) demonstrated that the expression may be used to

calculate the magnitude of the AS from the three orthogonal gradients of the total magnetic field:

$$|A(X, Y)| = \sqrt{\left(\frac{\delta T}{\delta x}\right)^2 + \left(\frac{\delta T}{\delta y}\right)^2 + \left(\frac{\delta T}{\delta z}\right)^2} \quad (3)$$

where A (x, y) is the amplitude of the analytic signal at (x, y) and T is the observed magnetic anomaly at (x, y).

The depths of the magnetic sources are estimated under the assumption that the anomalies are in two dimensions (2-D). Hence, the depths of the magnetic source anomalies are estimated as given in the equation below:

$$AS1 = \sqrt{\left(\frac{\delta fv}{\delta x}\right)^2 + \left(\frac{\delta fv}{\delta y}\right)^2 + \left(\frac{\delta fv}{\delta z}\right)^2}$$

$$(4) D = \frac{AS}{AS1} * N$$

(5)

where, fv = First vertical derivative of the residual map, D = Depth to the magnetic sources, AS = Analytic signal of the residual grid, AS1= Analytic signal of the first vertical derivative of the residual grid.

N = 1 (contact), N = 2 (dike), N = 3 (pipe), and N = 4 (sphere) (Baranov, 1957)

These are half slope rules and only 2 has been given by Roest the others are inferred from Baranov but more explanation necessary

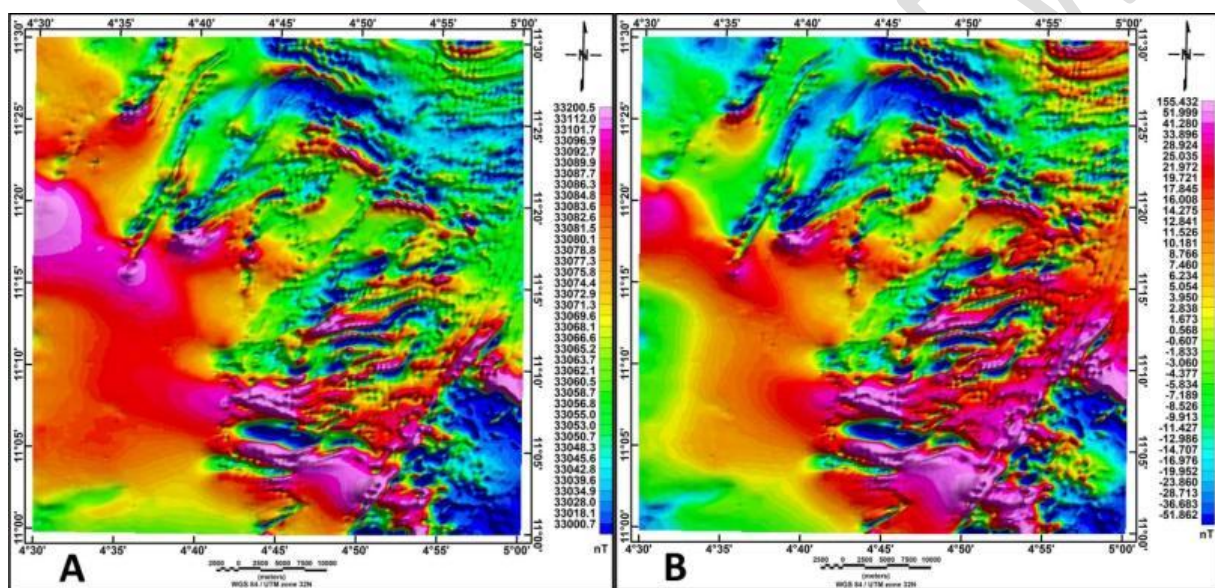
## Result and Discussions

### The Total magnetic intensity (TMI), Residual magnetic intensity and (RMI) and

### Residual magnetic intensity reduced to the equator (RTE) Maps

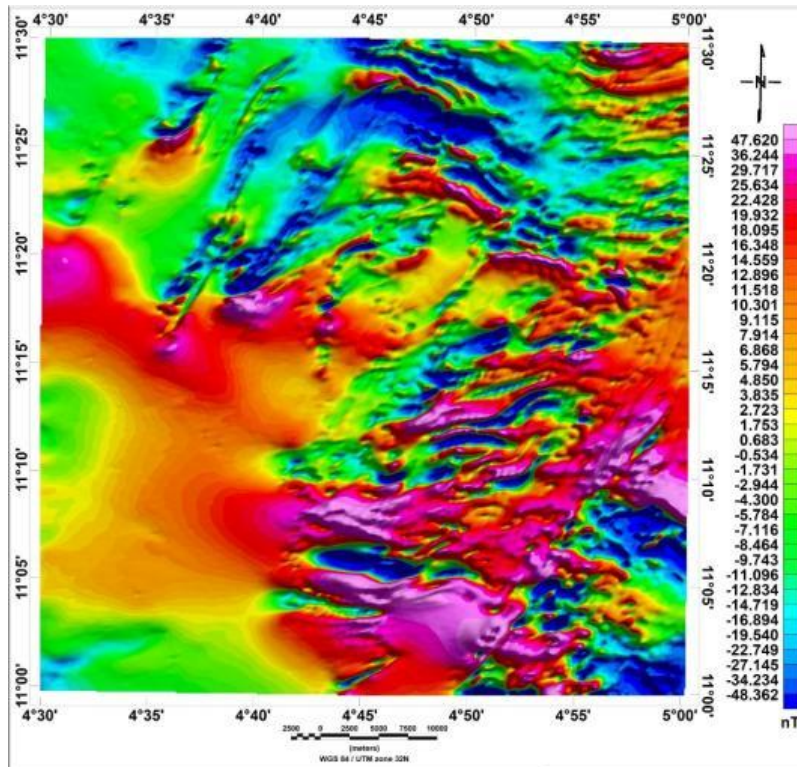
Figure 4a represents the total magnetic intensity map while Figure 4b represents the residual magnetic intensity map of the study area. From Figure 4a, the susceptibility varies between 33000.7 nT low to 33200.5 nT high. High values are confined to the southwestern portion of the map while low areas are confined to the northwest and southeastern portion of the map

with alternating occurrences of magnetic lows and highs which are attributed to the presence of structure (joints and faults), (Taweyet *al.*, 2020a). In Figure 4b, the residual magnetic intensity values vary from -51.862 nT low to 155.432 nT high. Anomaly trends in northeast to southwest and northwest to southeast within the study area. Figure 5 represents the RMI map reduced to the magnetic equator (RTE), comparing this map to the RMI map (Figure 4b), the difference between them is very clear in terms of magnetic susceptibility. The magnetic susceptibility (not the susceptibility !! but the magnetic anomaly – its nT !!)



**Figure4: a. TMI map and b. RMI map**

ranges from 148.362 nT low to 47.620nThigh on the RTE map as compared to the RMI map where it is -51.862 nT low to 155.432 nT high.



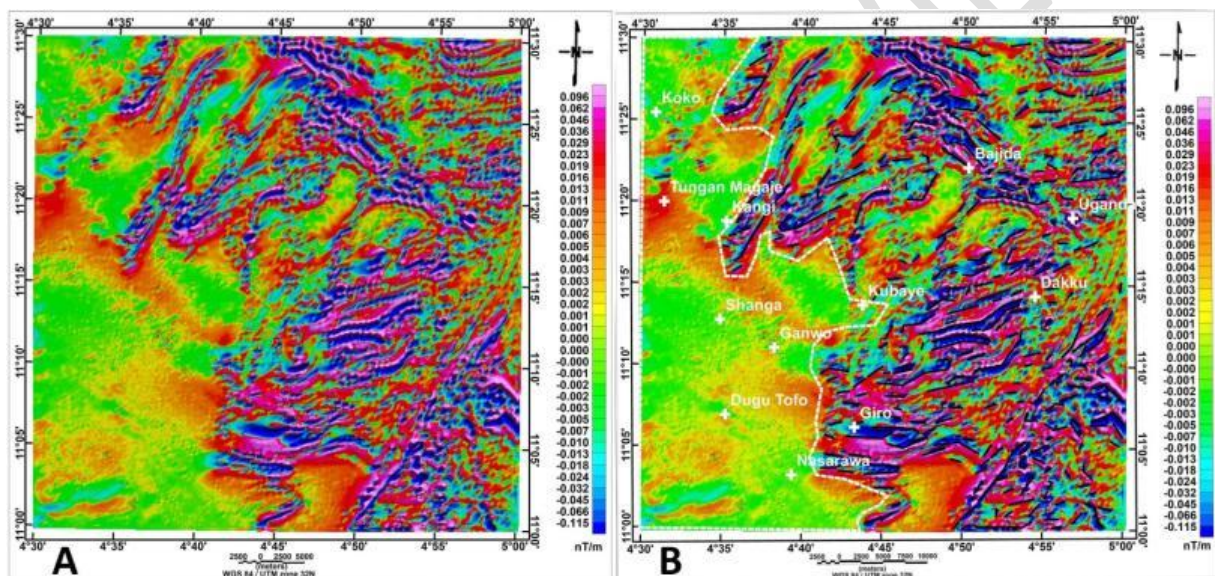
**Figure 5: RTE map of the study area**

Comparing the RTE map with the geologic map (Figure 3), it is visible that areas with alternating occurrence of low and high intensity are basement portions with structures concealed beneath the subsurface (Tawey *et al.*, 2020a) while the southwest with smooth anomaly trend is the basement portion of the study area.

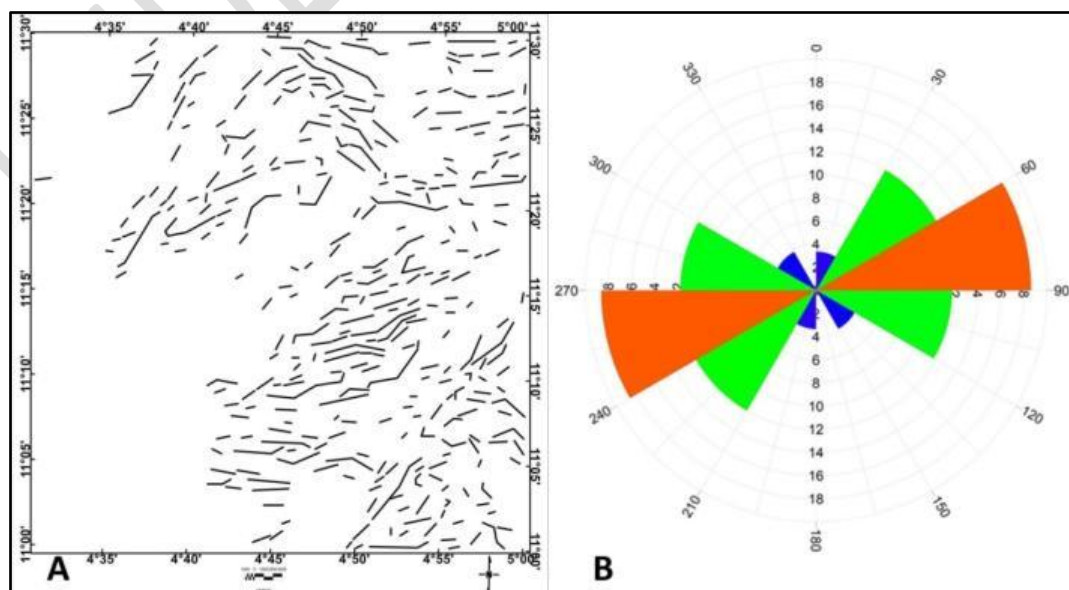
### **The First Vertical Derivative (FVD) map(calculated from RTE?)**

Derivative filters can be applied on aeromagnetic data to enhance weak signal responses and determine the position of deeply buried sources, borders, and structural lineaments (Roest *et al.*, 1992).The FVD approach has been utilized to map structures (Fault, fold, and joints) because of its ability to reveal discontinuities in signal responses. Figure 6a, which represents the FVD map of the study area, showed the western part of the map to be devoid of short wavelength anomalies, which are characterized by sedimentary zones or regions with thick sedimentary cover. Figure 6b is the FVD map with a structure that has been mapped out. There is no structural lineament in the regions of Koko, Tunga Maje, Shanga, Ganwo, Dugu

Tofo, and Nasarawa. Within the area around Bajida and Uganda in the north-eastern part of the map, Dakku around the east, and Giro in the south-central part of the research area, structures were observed and delineated. Figure 7a is a the FVD structural map while, Rose diagram (Figure 7b), which represents a succession of tectonic activity that must have influenced the Nigerian basement complex where the current study area is located, was created using these manually outlined structures as shown in Figure 7a. Statistical trend analysis has revealed that the ENE-WSW trends are the most prevalent, followed by NE-SW, WNW-ESE, NW-SE, and NNE-SSW trends (Figure 7b).



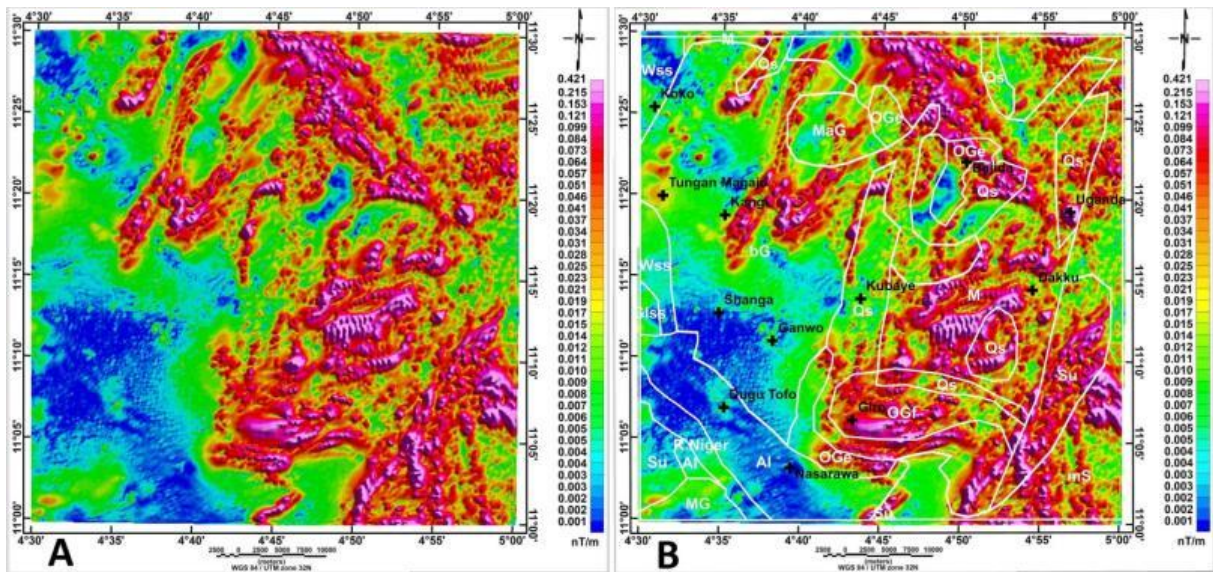
**Figure 6: a. FVD Map and b. FVD with Structures**



## **Figure7: a. Structures from FVD Map b.Rose Diagram from FVD Structures**

### **The Analytic Signal Map**

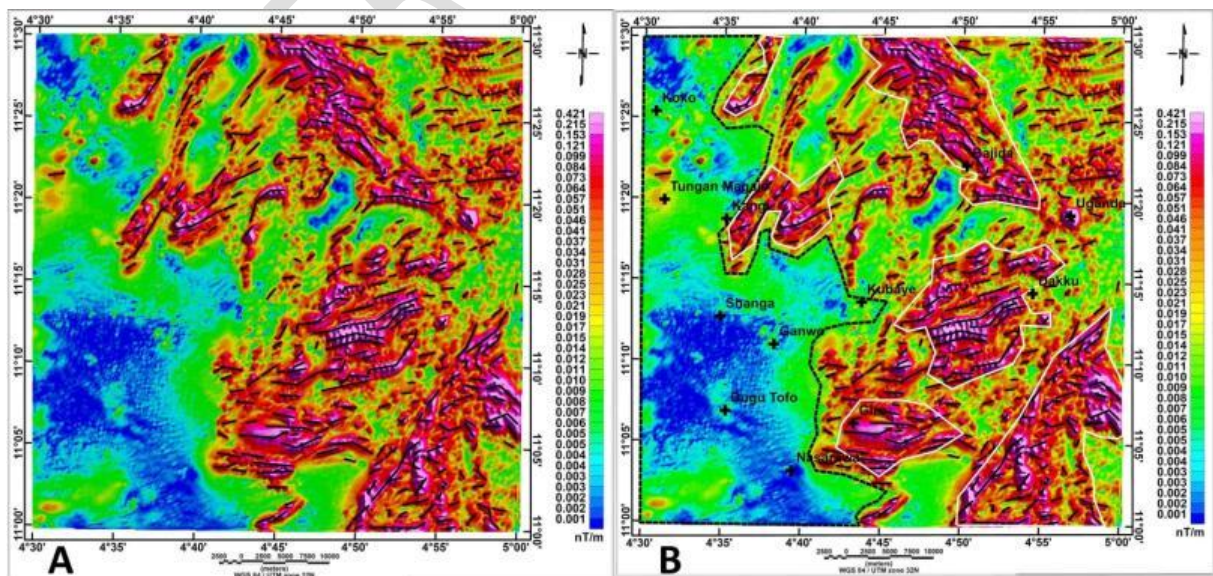
The AS filter applied to the TMI data (so now not from the RTE ?) helped to reduce the influence of remanent magnetization caused by magnetic inclination or declination. This was done to emphasise the borders of magnetised entities and form peaks over smaller causative bodies (Roest *et al.*, 1992). This approach can effectively demonstrate the amplitude magnitude of structural characteristics depending on their magnetization response since the peaks of the magnetised bodies are centered symmetrically over their sources through a shape transformation that only depends on the magnetization strength and direction concerning the magnetization vector (MacLeod *et al.*, 1993). Figure 7a depicts the research areas AS map, and Figure 7b depicts the geology of the study area on the analytic signal map. In Figure 7a, the amplitude of the AS map varies from 0.001 nT/m low to 0.421 high. Low analytic signal is observed at the west of the research area confirming that the geology (sedimentary) of the portion. The basement portion within this area with low AS is a portion of the basement complex with thick sedimentary cover. The rock type present may be the cause of the increased in AS amplitude to the east of the research region (Schists with Granitic intrusions). The geology of the area overlaid on the AS map shows that mineralization will be very high within the schist and other rocks in this location. Also, intrusions and solidification of mineralization fluids may be responsible for the significant AS found within the schist. Therefore, the potential mineralization zones are those with high analytic signal.



**Figure8: a. Analytic Signal Map and b. Analytic Signal Map with Geology**

*OGf = fined grained biotite granite, OGe = medium-grained biotite granite, R= River Alluvium, bG = biotite gneiss, MaG = Augene gneiss, Su = undifferentiated Schist including phyllites, Qs = Quartzite and Quartz schists, mS = Quartz and mica schists, sandstones, Gls = siltstones and clays, Wss = sandstones and siltstones and MG = Migmatitic granite gneiss and M = Migmatite*

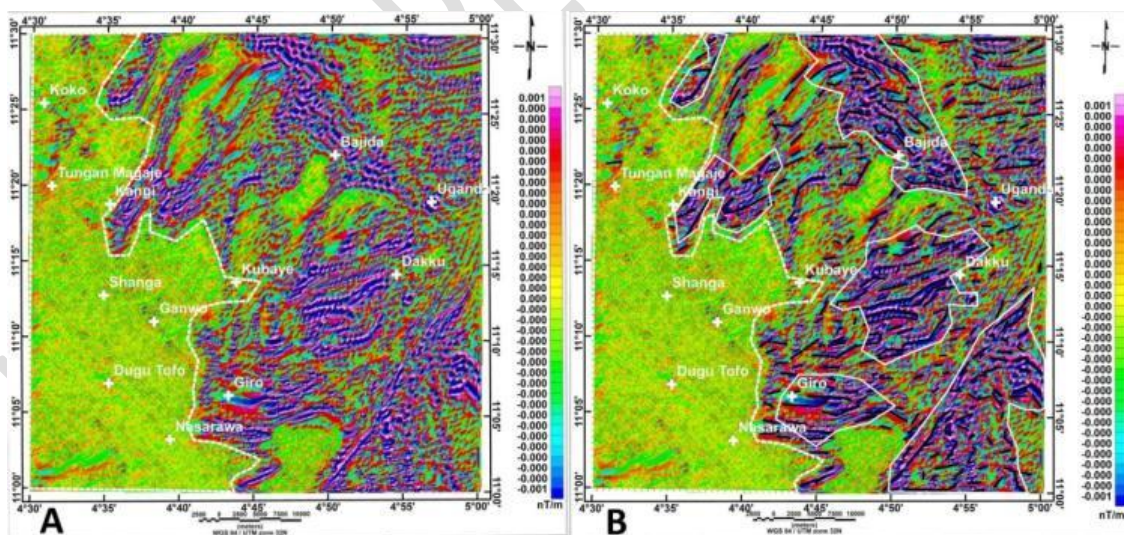
The AS map was overlaid with the structures identified by the FVD map (Figure 6a) (Figure 9a) and the structures are observed to fall directly on portions with high analytic signals which imply that these structures are channels through which mineralisation fluids intruded into other rocks within the study area and this has made it possible for the prospective mineralisation zones within the study area to be delineated using white polygons (Figure 9b).



**Figure 9: a. AS Map with Structures and b. AS Map structures and Mineralization zones boundaries**

## The second vertical Derivative map (SVD)

Figure 10a represents the SVD map of the study area while Figure 10b represents the SVD map with structures that were delineated, overlaid on it with anomaly boundaries also delineated using white polygons just like the case of the AS map (Figure 8b). The SVD map also revealed the boundary between the sedimentary portion and the basement portion of the study area. On comparing the mineralisation zones delineated using the SVD and the AS methods (Figures 11a & 11b), it is observed that the two methods have aided in the characterization of the lithology of the study area to be either basement or sedimentary on a general geological classification. Also, mineralisation boundaries delineated on the SVD map coincided with the areas of high analytic signal delineated using the analytic signal method. The delineated mineralisation zones have been overlaid on the geologic map of the study area with the structural lineaments (Figure 12) bearing in mind that structures are conduits and hosts for mineralization. Each mineralization zones delineated have one or more structural associations which confirm that structures control mineralisation within the study area.



**Figure 10: a. Second vertical Derivative map (SVD) Map and b. Second Vertical Derivative (SVD) with Structures and mineralization zone boundary**

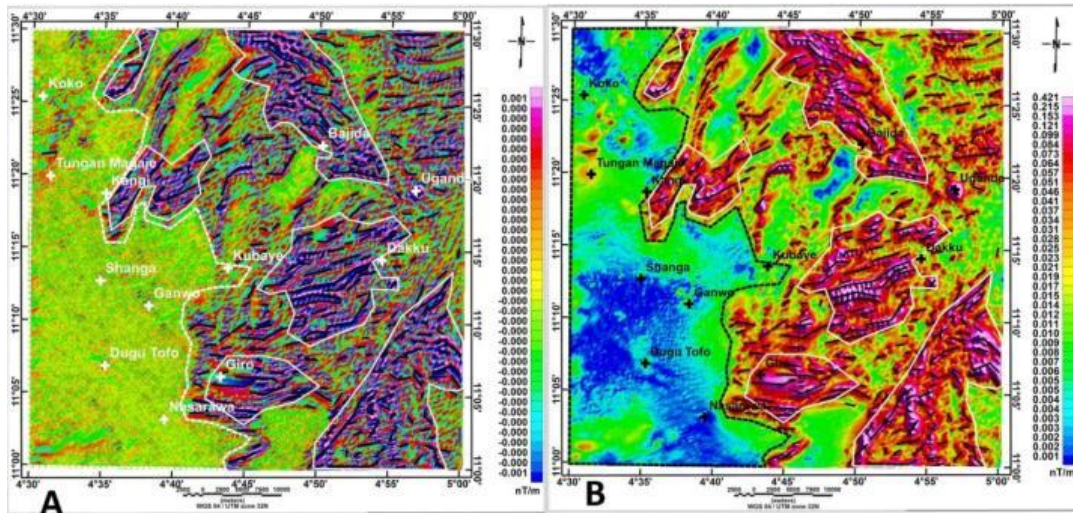


Figure 11: a. Second Vertical Derivative (SVD) with mineralization zone boundary and b. Analytic signal with mineralization zones

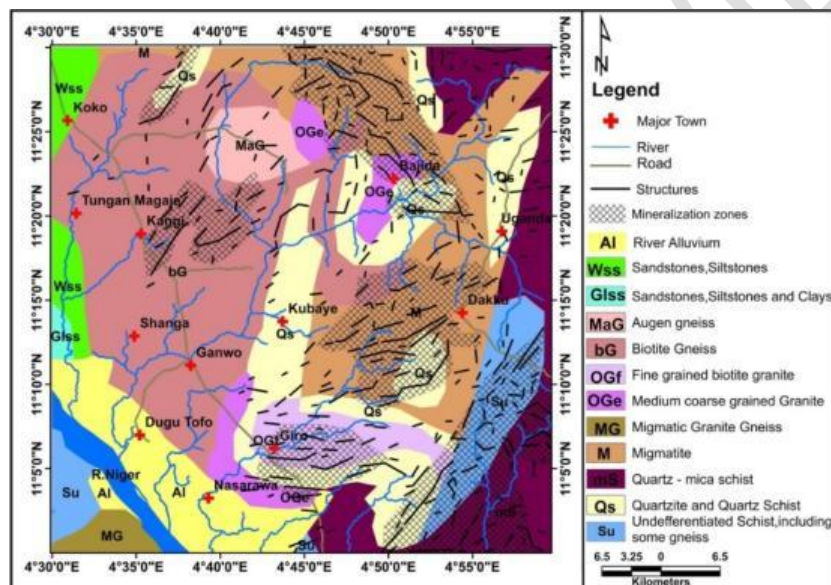


Figure 12: Integration of Shanga Structures with the Geology (NGSA, 2009)  
Estimation of Depth of Minerals Occurrence

The analytic signal depth estimation method was used to estimate the depth of possible occurrence of minerals within the study area. The depths were determined using the analytic signal of residual anomaly (Figure 13a), the first vertical derivative (Figure 13b), and the analytic signal of the first vertical derivative (Figure 13c), while (Figure 13d) represents the analytic signal depth. From Figure 13d, the minimum depths for the occurrence of this mineral are from 0 to 11.457 m.

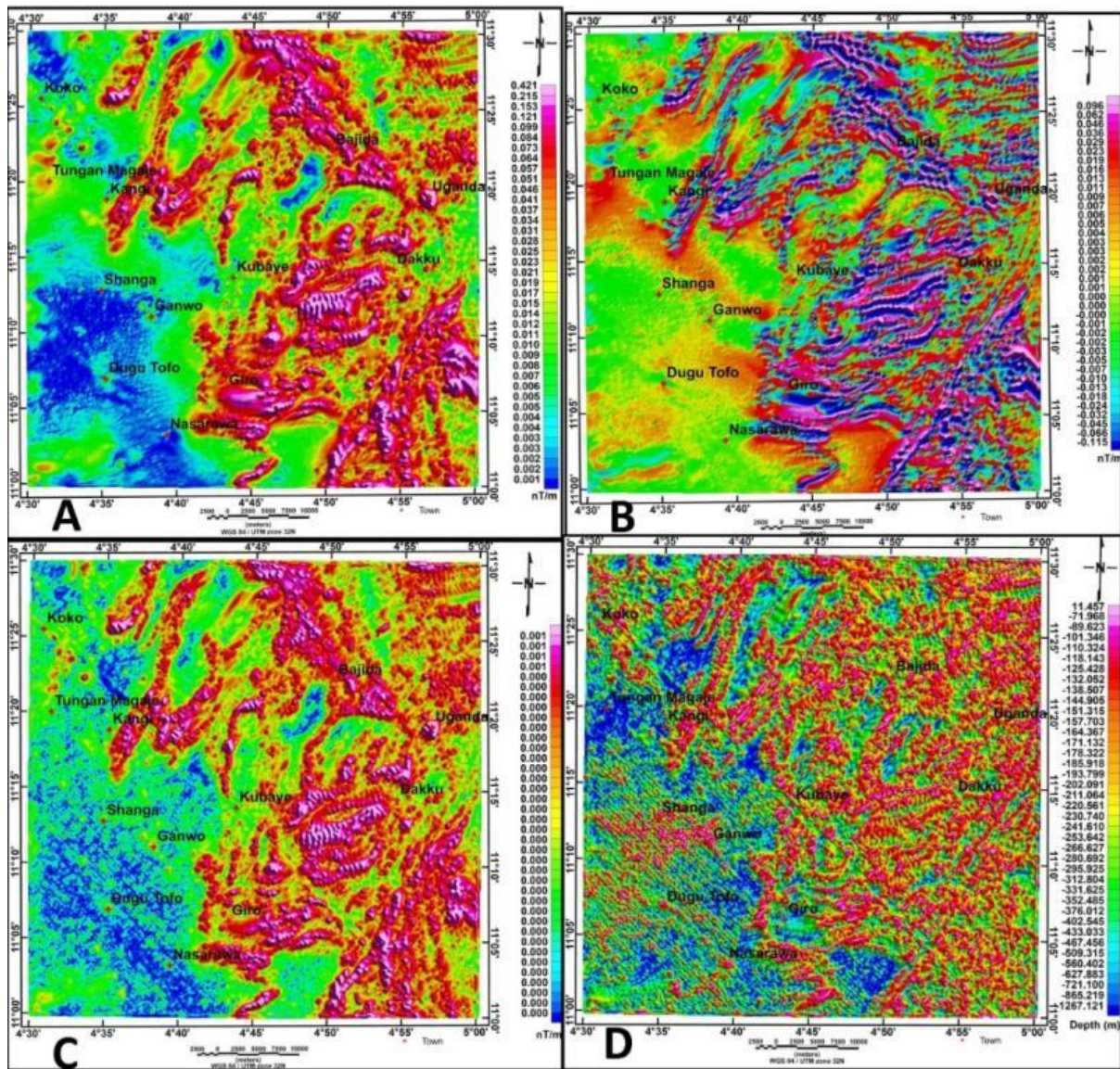


Figure 13: a. AS map b. FVD of Residual anomaly c. AS of FVD map and D. AS Depth

## Conclusion

The use of three source edge detection/interpretation techniques, including analytic signal (AS), first (FVD), and second vertical derivatives have aided in delineating structures within the study area that trend predominantly in the ENE-WSW direction, followed by NE-SW, WNW-ESE, NW-SE, and NNE-SSW directions. The study area has amplitudes ranging from 0.001 nT/m to 0.421 nT/m, and the high analytic signal within the schist has been attributed to intrusions and solidification of mineralisation fluids with structural associations which has enabled the mineralization zones of the area to be delineated. Furthermore, the SVD map

revealed mineralization boundaries that coincided with the mineralization zones delineated on the AS map. The mineralization zones delineated have one or more structural lineaments passing through them, confirming that they are responsible for mineralization fluid passage and mineralization hosting within the study area and the analytic signal method revealed a minimum depth of occurrence for the minerals ranging from 0 to 11.457 m.

### References

- Abba, S. I. (1983). The structure and petrography of alkaline rocks of the Mada Younger Granite Complex, Nigeria. *Journal of African Earth Science*, 3, 107-113.
- Ajakaiye, D. E, Hall, D. H, Ashiekaa, J. A, and Udensi, E. E (1991). Magnetic anomalies in the Nigerian continental mass based on aeromagnetic surveys. *Tectonophysics*.192(1):211-230.
- Akinlalu, A.A., Adelusi, A.O., Olayanju, G.M., Adiat, K.A.N., Omosuyi, G.O., Anifowose, A.Y.B., and Akeredolu, B.E., (2018). Aeromagnetic mapping of basement structures and mineralization characterization of Ilesa Schist Belt, Southwestern Nigeria. *J. African Earth Sci.* 138, 383–391. <https://doi.org/10.1016/j.jafrearsci.2017.11.033>.
- Akinlalu, A. A. (2023) Radiometric Mapping for The Identification of Hydrothermally Altered Zones Related to Gold Mineralization in Ife–Ilesa Schist Belt, Southwestern Nigeria. *Indonesian Journal of Earth Sciences*, 3 (1), 51
- Amigun, J. O, and Anu, A. L. (2013) Integrated geophysical mapping of structures beneath Ijero – Aramoko Area, Southwestern Nigeria: Implications for control of mineralization. *Acta Geologica Sinica*.87:708.
- Arogundade, A. B., Awoyemi, M. O., Ajama, O. D., Falade, S. C., Hammed, O. S., Dasho, O. A., and Adenik, C. A., (2021). Integrated Aeromagnetic and Airborne Radiometric Data for Mapping Potential Areas of Mineralisation Deposits in Parts of Zamfara, Northwest Nigeria. *Pure and Applied Geophysics*. <https://doi.org/10.1007/s00024-021-02913-w>
- Augie, A.I, and Sani, A. A. (2020). Interpretation of aeromagnetic data for gold mineralisation potential over Kobo and its environs NW Nigeria. *Savanna J Basic Appl Sci*; 2(2):116–23.
- Augie, A. I., Salako, K. A., Rafiu, A. A. and Jimoh, M. O., (2022a) Geophysical assessment for gold mineralization potential over the southern part of Kebbi State using aeromagnetic data. *Geology, Geophysics & Environment*; 48 (2): 177-193
- Augie, A. I., Salako, K. A., Rafiu, A. A. and Jimoh, M. O. (2022b) geophysical magnetic data analyses of the geological structures with mineralization potentials over the southern part of Kebbi, NW Nigeria. *Mining Science*, 29; 179-203
- Azizi, M., Saibi, H., and Cooper, G. R. J. (2015) Mineral and structural mapping of the Aynak-Logar Valley (eastern Afghanistan) from hyperspectral remote sensing data and

- aeromagnetic data,” *Arabian Journal of Geosciences* 8(12) 10911-10918, doi: 10.1007/S12517-015-1993-2.
- Baranov, V. (1957). A new method for interpretation of aeromagnetic maps: pseudo-gravimetric anomalies. *Geophysics*, 22, 359-383.
- Black, R. (1980). Precambrian of West Africa. *Episodes*, 4, 3-8.
- Foss, C. (2011). Magnetic data Enhancement and Depth Estimation. In H. Gupta (Ed.), *Encyclopedia of Earth Sciences Series*, 736-746.
- Gandu. A. H., Ojo, S. B. and Ajakaiye, D.E. (1986). A gravity study of the Precambrian rocks in the Malumfashi area of Kaduna State, Nigeria. *Tectonophysics*, 126, 181–194.
- Joseph, A., Sodiq, A., Moses, A., and Bamidele, O. (2023) Geological structure and hydrothermal alteration mapping for mineral deposit prospectivity using airborne geomagnetic and multispectral data in Zuru Province, northwestern Nigeria *The Egyptian Journal of Remote Sensing and Space Sciences*. 26 , 231-244
- Kudamnya, E. A., Andongma, W. T., and Osumaje, J. O. (2014) Hydrothermal mapping of Maru schist belt, north-western Nigeria using remote sensing technique. *International Journal of Civil Engineering (IJCE)*. 3 (1), 59-66
- MacLeod, I.N., Jones, K., and Dai, T.F.(1993). 3-D analytic signal in the interpretation of total magnetic field data at low magnetic latitudes. *Exploration Geophys.* 24 (3– 4), 679–688.
- Nigeria Geological Survey Agency (NGSA). (2006). *Mineral Resources Map of Nigeria* (2006 Ed.). Published by the Authority of the Federal Republic of Nigeria. p. 1.
- Nigeria Geological Survey Agency (NGSA) (2009). *Geological Map of Nigeria* (2009 Ed.). Published by the Authority of the Federal Republic of Nigeria. p. 1.
- Obaje, N. G. (2009). *Geology and resources of Nigeria 120 lectures notes in Earth Sciences*. Springer-Verlag. [https://doi.org/ 10.1007/978-3-540-92685-6](https://doi.org/10.1007/978-3-540-92685-6)
- Olayinka, AI. (1992). Geophysical siting of boreholes in crystalline basement areas of Africa. *Journal of African Earth Science*, 14, 197–207.
- Olomo, K. O., Bayode, s., Alagbe, S. A., Olayanju, G. M.,and Olaleye, O. K. (2022a) Aeromagnetic Mapping and Radioelement Influence on Mineralogical Composition of Mesothermal Gold Deposit in Part of Ilesha Schist Belt, Southwestern Nigeria, *NRIAG Journal of Astronomy and Geophysics*, 11:1, 177-192, DOI: 10.1080/20909977.2022.2057147
- Olomoa, K. O. Bayode, S., Alagbe, O. A.,Olayanju, G. M. and Olaleye, O. K. (2022b) Multifaceted investigation of porphyry cu-au-mo deposit in hydrothermal alteration zones within the gold field of Ilesha schist belt. *Malaysian Journal of Geosciences (MJG)* 6(2),29-37; DOI: <http://doi.org/10.26480/mjg.02.2022.29.37>
- Roest, W.R., Verhoefs, J., and Pilkington, M., (1992). Magnetic interpretation using 3-D analytic signal Magnetic interpretation using the 3-D analytic signal. *Geophysics* 57 (1), 116–131.

Saibi, H., Azizi, M., and Mogren, S. (2016) Structural Investigations of Afghanistan Deduced from Remote Sensing and Potential Field Data,” *Acta Geophysica*; 64 (4) 978–1003 doi: 10.1515/acgeo-0046.

Sani AA, Augie AI, Aku MO. Analysis of gold mineral potentials in Anka schist belt northwestern Nigeria using aeromagnetic data interpretation. *J Niger Assoc Math Phy* 2019; 52:291–8.

Taofoeq, O. L. (2020). Integrated aeromagnetic and aeroradiometric data for delineating lithologies, structures, and hydrothermal alteration zones in part of southwestern Nigeria. *Arabian Journal of Geosciences* 13:775 <https://doi.org/10.1007/s12517-020-05743-7>

Tawey, M. D., Ibrahim, A. A., and Ehinlaiye A. O. (2023a) Comparative Depth to Magnetic Source Analysis of Shanga (Sheet 96), North-western Nigeria Using Aeromagnetic Data. *African Journal of Environmental Sciences & Renewable Energy*. 12 (1); 56-69

Tawey, M. D., Alhassan, D. U., Adetona, A. A., Salako, K. A., Rafiu, A. A., and Udensi, E. E. (2020a). Application of Aeromagnetic Data to Assess the Structures and Solid Mineral Potentials in Part of North Central Nigeria. *Journal of Geography, Environment and Earth Science International*, 24(5), 11-29. Article no. JGEESI.58030. ISSN: 2454-7352. DOI: 10.9734/JGEESI/2020/v24i530223.

Tawey, M. D., Adetona, A. A., Alhassan, U. D., Rafiu, A. A., Salako, K. A., and Udensi, E. E. (2021). Aeroradiometric Data Assessment of Hydrothermal Alteration Zones in Parts of North Central Nigeria. *Asian Journal of Geological Research*, 4(2), 1-16.

Umaru, A. O., &Kankara, A. I. (2020). Utilizing Landsat-8 sensor operational land image data for hydrothermal alteration mapping within Anka schist belt, northwestern Nigeria. *Research Reviews of the Department of Geography, Tourism and Hotel Management* 49-2, 127-149 DOI: 10.5937/ZbDght2002127A

Umaru, A. O., Okunlola, O., Danbatta, U. A., and Olusegun, G. O (2022) Litho-structural and hydrothermal alteration mapping for delineation of gold potential zones within Kaiama, northwestern Nigeria, using airborne magnetic and radiometric data. *Arabian Journal of Geosciences*, 15:1771

Uwiduhaye, A., Ngaruye, J.C., and Saibi, H., (2020). Defining potential mineral exploration targets from the interpretation of aeromagnetic data in Western Rwanda. *Ore Geol. Rev.* 103927. <https://doi.org/10.1016/j.oregeorev.103927>.