

Original Research Article

Tricuspid annular plane systolic excursion/pulmonary arterial systolic pressure ratio as a predictor of mortality in heart failure patients

Abstract :

Aims: we aimed to investigate the prognostic value of the tricuspid annular plane systolic excursion (TAPSE)/ pulmonary arterial systolic pressure (PASP) ratio in Moroccan patients with heart Failure (HF)

Study Design:

A retrospective study was conducted in The Cardiology Department of Ibn Rochd Hospital of Casablanca in Morocco . The study was conducted in the period between March 2012 to March 2016 with a follow-up until December 2022.

Methods: we evaluated data from the HF register patients and their relatives were contacted by phone. Patients with reduced LVEF were included, patients with pulmonary embolism and patients with HFpEF were excluded. The endpoint of the study was mortality.

Results: 128 patients were enrolled Over an average follow-up of 58 months. 51(41.4%) patients died at the end of the follow-up, the median value of left ventricular ejection fraction was $35.2 \pm 2.2\%$. Patients were stratified according to TAPSE/PASP ratio (low <0.32 mm/mmHg; high: >0.32 mm/mmHg). Kaplan-Meier survival analysis showed that ten-year all-cause mortality was significantly higher in patients with TAPSE/PASP ≤ 0.32 mm/mmHg than in patients with TAPSE/PASP > 0.32 mm/mmHg (log-rank 7.8, $p=0.008$) Cox regression analysis revealed that lower LVEF ($p= 0.04$) , and a ratio of TAPSE/PASP <0.32 ($p=0.02$) were associated to an increase in all-cause mortality

Conclusion: correlating right ventricular function to loading conditions may be more accurate in assessing its real contractility and predicting patients' outcomes. Our study showed that TAPSE/PASP appears as a novel prognostic predictor in patients with Heart failure.

Key words : TAPSE, PASP , Chronic heart failure , Morocco , predictors ,mortality .

Introduction :

Heart failure is a global public health concern affecting millions of people and poses an important social and economic burden more pronounced in developing countries (1)

HF is defined by The American heart association as a complex clinical syndrome with symptoms and signs that result from any structural or functional impairment of ventricular filling or ejection of blood (2) Even though this definition applies to both the right and left ventricle, the left ventricle has always been the primary focus for physicians.

RV is far more important than being a simple conduit. Its importance is already known in terms of prognosis (3) . Nevertheless, its complex anatomy, trabeculations, and dependence on load conditions make its assessment more complicated in echocardiography (4)

The ratio between a tricuspid annular plane systolic excursion (TAPSE) and pulmonary artery systolic pressure (PASP) TAPSE/PASP is a good marker of RV-PA coupling and has proved its relevance in terms of Prognosis in Heart failure and pulmonary hypertensive patients (5)

The present study aims to determine the prognostic value of TAPSE/PASP in patients with chronic heart failure in Morocco .

Methods :

This single-center, retrospective study was conducted in the cardiology department of IBN ROCHD hospital in Casablanca in the period between March 2012 and March 2016 with a follow up until December 2022 data was collected from the Heart failure Registry ; and by contacting patients and their relatives by phone .

128 patients were enrolled Over an average follow-up of 55 ± 12 months. Examinations used Vivid 7 (General Electrics) echocardiography. . Simpson's method was used to estimate Left ventricular ejection fraction (LVEF) ,PASP was estimated based on tricuspid regurgitation velocity and the estimated central venous pressure, While TAPSE estimation use 2D echo M mode, then the Ratio TAPSE/PASP was calculated .

Patients with HfrEF or HfmEF were included , patients with history of pulmonary embolism, HfpEF and with missing data were excluded

Statistical analysis:

The continuous variables were reported in means \pm standard deviation and compared using an independent sample t-test. The remaining variables were expressed in percentages and compared using the Chi-square tests the primary endpoint of the analysis was death, and Kaplan-Meier was used for the calculation of survival over time, The differences in mortality between subgroups were tested using the log-rank test. The Cox proportional hazard regression model was used to investigate the association between the survival time of patients and the variables.. All analyses were conducted using the IBM SPSS Statistics 23 version.

Results :

We included 128 patients during ten year of follow-up. Table 1 summarizes the informations available for patients included in the study. 57.7% of patients were men. The mean age observed was 58 years. The prevalence of diabetes and hypertension observed for all patients were 39.8% and 46.8 % respectively. The median value of the left ventricular ejection fraction was 35.2%

51(41.4%) of patients have died at the end of the follow-up the overall Univariate Cox regression analysis revealed that LVEF HR= 0.82(p= 0.04), and a ratio of TAPSE\PAPS <0.32 HR =0.9 (p=0.02) were associated with an increase in all-cause mortality the other parameters of assessing RV function: TAPSE and tricuspid lateral annular systolic velocity (S') were both not correlated to the primary outcome (Table 2)

Table 1 : characteristics of the studied population

	survival N=72	All causes death N=51	P value
Age (y)	58 \pm 15.8	60 \pm 15.8	0.34
Gender (M) , n (%)	43 (59)	28 (54.9)	0.52
SBP (mmHG)	128.2 \pm 13.8	130 \pm 12	0.6
DBP (mmHG)	74 \pm 10.5	77 \pm 12	0.76
HR (bpm)	78 \pm 9	76 \pm 9	
Hypertension n (%)	32(44)	28 (50)	0.37
Diabetes n (%)	28(38)	21(41)	0.6
LVEF(%)	36.2 \pm 2.3	34 \pm 2.5	0.02
PAPS (mmHG)	36.34 \pm 17	39.55 \pm 18	0.2
TAPSE (mm)	18.46 \pm 4	18.73 \pm 4	0.23

TAPSE\PASP	0.62± 0.3	0.47± 0.2	<0.001
0.32>	17 (23)	23(45)	
0.32<	55(76)	28 (55)	

Table 2 :Univariate Cox proportional hazard regression

	B	E.S.	Wald	ddl	Signif.	Exp(B)	95.0% IC pour Exp(B)	
							Inf	Sup
TAPSE\PASP	-.105	.047	5.037	1	.025	.900	.821	.987
TAPSE	.555	.402	1.904	1	.168	1.742	.792	3.831
SVD	-.779	.581	1.798	1	.180	.459	.147	1.433

DBP : diastolic blood pressure , LVEF : left ventricular ejection fraction , SBP : systolic blood pressure PASP: Pulmonary arterial systolic pressure , TAPSE : tricuspid annular plane systolic excursion

Table 2: Correlation between TAPSE and tricuspid lateral annular systolic velocity (S')

Time-to-event analysis

The overall survival curve is shown in figure 1. patients with a ratio of TAPSE\PAPS inferior to 0.32 had a worse prognosis this was demonstrated after a period of 4 years with log rank of 0.08

Chart 1 : Global Comparison

	Chi-squarre	ddl	Sig.
Log Rank (Mantel-Cox)	7.087	1	.008
Breslow (Generalized Wilcoxon)	5.040	1	.025
Tarone-Ware	6.118	1	.013

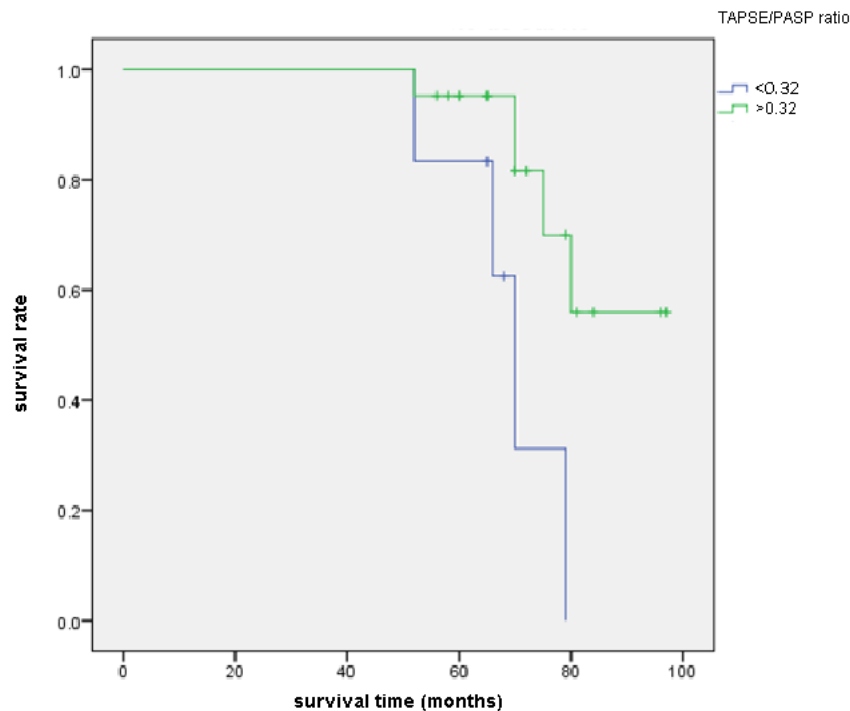


Figure 1 : survival rate in patients with HF depending of TAPSE\PASP ratio

Discussion :

Right ventricle assessment has been a challenge to cardiologists even with the advent of 2-dimensional echocardiography. In contrast, left ventricular ejection fraction is relatively easy to calculate and is correlated to cardiovascular outcomes. LV contractility is indeed more complicated to evaluate and LVEF may have limits in this regard. However, it is still an accurate and reproducible parameter. As mentioned before this difference is due to RV geometry and extreme loading dependence. (6) RV to PA coupling is considered a valuable prognostic predictor in patients with pulmonary hypertension and Heart failure (7) with TAPSE\PASP being the most noninvasive parameter studied in the last decade (8–10)

The main finding of this study is that when combined with echocardiographic estimation of pulmonary arterial pressure, tricuspid annular plane systolic excursion was strongly associated with mortality in patients with reduced or mildly reduced ejection fraction . A recent Italian study emphasizes the importance of interpreting RV function in the context of RV load, they found a strong correlation between TAPSE, RV strain, and survival when considering pulmonary pressure in patients with chronic heart failure (11)

Patients with lower LVEF experienced more cardiovascular events and mortality, this is already reported in the literature and many studies proved that LVEF is a strong and independent predictor of mortality in patients with chronic heart failure (12)

Mention briefly about LVEF readings and their resultant effects

While our study failed to prove a correlation between pulmonary pressure and TAPSE with mortality separately it is believed that each of these parameters is strongly correlated with heart failure rehospitalization and mortality (13,14) this may be due to the limited population of our study and the long period of follow up

These findings highlight the importance of assessing RV function in the light of loading conditions: TAPSE/PASP is a noninvasive, simple, and reproducible parameter to assess the prognosis of patients with Heart failure, it may be beneficial to include this parameter in the echocardiography report of all patients. The variation of this parameter may be beneficial in assessing the efficacy of guideline-directed medical therapy GDMT and we hope that future studies will test this hypothesis .

Limitations

This study has a number of limitations. We excluded 30% of the population and couldn't analyze mean pulmonary artery pressure due to missing data , Despite the limited number of the study population (123 patients) a strong correlation was found between mortality and TAPSE/PASP ratio , Cardiovascular death couldn't be determined .

Conclusion

Correlating right ventricular function to loading conditions may be more accurate to assess RV contractility and predict patients outcomes. Our study showed that TAPSE/PASP appears as a novel prognostic predictor in patients with Chronic Heart failure.

Consent for publication

Not applicable.

References :

1. Global burden of heart failure: a comprehensive and updated review of epidemiology - PubMed [Internet]. [cited 2023 Aug 9]. Available from: <https://pubmed.ncbi.nlm.nih.gov/35150240/>
2. 2022 AHA/ACC/HFSA Guideline for the Management of Heart Failure: A Report of the American College of Cardiology/American Heart Association Joint Committee on Clinical Practice Guidelines | Circulation [Internet]. [cited 2023 Aug 15]. Available from: <https://www.ahajournals.org/doi/full/10.1161/CIR.0000000000001063>
3. Rigolin VH, Robiolio PA, Wilson JS, Harrison JK, Bashore TM. The forgotten chamber: the importance of the right ventricle. *Cathet Cardiovasc Diagn.* 1995 May;35(1):18–28.

4. Right Ventricular Function in Cardiovascular Disease, Part I | Circulation [Internet]. [cited 2023 Aug 15]. Available from: <https://www.ahajournals.org/doi/full/10.1161/CIRCULATIONAHA.107.653576#d1e746>
5. Sert S, Selçuk N, Yıldırım Ö, Orhan G. Prognostic value of TAPSE/PASP ratio in right ventricular failure after left ventricular assist device implantation: Experience from a tertiary center. *Turk J Thorac Cardiovasc Surg.* 2022 Jul 1;30(3):334–43.
6. Ho SY, Nihoyannopoulos P. Anatomy, echocardiography, and normal right ventricular dimensions. *Heart.* 2006 Apr;92 Suppl 1(Suppl 1):i2-13. doi: 10.1136/hrt.2005.077875. PMID: 16543598; PMCID: PMC1860731
7. He Q, Lin Y, Zhu Y, Gao L, Ji M, Zhang L, et al. Clinical Usefulness of Right Ventricle–Pulmonary Artery Coupling in Cardiovascular Disease. *J Clin Med.* 2023 Mar 27;12(7):2526.
8. Tello K, Wan J, Dalmer A, Vanderpool R, Ghofrani HA, Naeije R, et al. Validation of the Tricuspid Annular Plane Systolic Excursion/Systolic Pulmonary Artery Pressure Ratio for the Assessment of Right Ventricular–Arterial Coupling in Severe Pulmonary Hypertension. *Circ Cardiovasc Imaging.* 2019 Sep;12(9):e009047.
9. Guazzi M, Bandera F, Pelissero G, Castelvechio S, Menicanti L, Ghio S, et al. Tricuspid annular plane systolic excursion and pulmonary arterial systolic pressure relationship in heart failure: an index of right ventricular contractile function and prognosis. *Am J Physiol Heart Circ Physiol.* 2013 Nov 1;305(9):H1373-1381.
10. Naseem M, Alkassas A, Alaarag A. Tricuspid annular plane systolic excursion/pulmonary arterial systolic pressure ratio as a predictor of in-hospital mortality for acute heart failure. *BMC Cardiovasc Disord.* 2022 Sep 17;22(1):414.
11. Iacoviello M, Monitillo F, Citarelli G, Leone M, Grande D, Antoncetti V, et al. Right ventriculo-arterial coupling assessed by two-dimensional strain: A new parameter of right ventricular function independently associated with prognosis in chronic heart failure patients. *Int J Cardiol.* 2017 Aug;241:318–21.
12. Angaran P, Dorian P, Ha ACT, Thavendiranathan P, Tsang W, Leong-Poi H, et al. Association of Left Ventricular Ejection Fraction with Mortality and Hospitalizations. *J Am Soc Echocardiogr Off Publ Am Soc Echocardiogr.* 2020 Jul;33(7):802-811.e6.
13. Bursi F, McNallan SM, Redfield MM, Nkomo VT, Lam CSP, Weston SA, et al. Pulmonary pressures and death in heart failure: a community study. *J Am Coll Cardiol.* 2012 Jan 17;59(3):222–31.
14. Kjaergaard J, Akkan D, Iversen KK, Køber L, Torp-Pedersen C, Hassager C. Right ventricular dysfunction as an independent predictor of short- and long-term mortality in patients with heart failure. *Eur J Heart Fail.* 2007;9(6–7):610–6.