

Effect of Integrated nutrient management on yield attributing parameters of *kharif* onion

(*Allium cepa* L.)

ABSTRACT

Aim: To study the effect of Integrated Nutrient Management on the yield attributing parameters of *kharif* onion

Study design: Randomised Block Design (RBD)

Place and duration of study: The experiment was conducted at the Research Farm of the Department of Vegetable Science, Chandra Shekhar Azad University of Agriculture & Technology, Kanpur U.P during the *kharif* seasons of 2021-22 and 2022-23.

Methodology: An experiment was carried out during *Kharif* season in the years, of 2021-22 and 2022-23 both the year same time at Vegetable Research Farm, Department of Vegetable Science, Chandra Shekhar Azad University of Agriculture and Technology, Kalyanpur, Kanpur. The experiment was laid out in randomized block design with three replications. The treatments consisted of T1- Control: T2- 100% RDF (NPK @ 120:60:80 kg/ha; T3- 75% RDF+ FYM 6 t/ha; T4- 75%RDF+ Vermicompost@2 t/ ha; T5- 75%RDF+FYM @ 3t/ha+vermicompost@1 t/ha ; T6 75%RDF + FYM @ 3t/ha+Vermicompost @ 1t/ha+ Biofertilizer (Azotobacter +PSB @5kg/ha each):T7 50% RDF + FYM @ 12t/ha; T8 50%RDF + Vermicompost @ 4t/ha: T9 50%RDF+ FYM @6t/ha + Vermicompos @ 2t/ha:T10 50%RDF + FYM @ 6t/ha + Vermicompost @2t/ha+ Biofertilizer (Azotobacter + PSB @ 5kg/ha each).

Results:Results revealed that the treatment T10 (50% RDF +FYM @ 6 t/ha + Vermicompost @ 2t/ha+ Biofertilizer (Azotobacter + PSB @ 5kg/ha each),performed better with respect to yield attributing parameters characters such as Average bulb weight,A grade bulb percentage, B grade bulb percentage, C grade, days takes to harvesting, bolting percentage of bulb, double bulb Percentage.

Conclusion:

The study underscores the crucial need to shift towards Integrated Nutrient Management (INM), incorporating both organic and inorganic fertilizers. This transition is essential to protect soil fertility, maintain ecosystem health, and ensure sustainable food production for future generations.

Keywords: INM, Growth, Yield, Biofertilizer, Vermicompost

Comment [RL1]: Revise the abstract narrative to conform with the standard presentation format.

How do you measure the "effect" in the objective?

1. INTRODUCTION

Onion is one of the most important vegetable and spice crop grown in temperate, sub-tropical and tropical climates throughout the world. Onion exhibit particular diversity in the Eastern Mediterranean countries, through Turkmenistan, Tajikistan to Pakistan and India, which are the most important sources of genetic diversity and believed to be center of origin. India is one of the leading onion producers with production of 2362.33 thousand MT per year from an area of 1284.99 thousand hectare, with the productivity of 18.10

MT/ha (Horticulture Statistics Department, 2018-19). The more pungent varieties of onion appear to possess the greatest concentration of health promoting phyto-chemicals. Today, onions continue to be an important part of our diet. The National Cancer Institute has reported that onions contain antioxidants that help to block cancer and appear to lower Cholesterol. Onion bulbs and greens onion both are rich in vitamin C, potassium, dietary fiber, minerals, folic acid, high protein content. It is mainly used for cuisine, *salad* and culinary purpose. Onions have always held a place in folklore and folk medicine, but recently biochemists have revealed its anti-bacterial properties, particularly against *Helicobacter pylori*, the ulcer-forming microorganism. Besides, the more pungent onions exhibit strong anti-platelet and blood thinning activities in human blood, potentially adding protection against arteriosclerosis, cardio-vascular diseases, stroke, diabetes, osteoporosis and heart attack. The basis for INM, which could involve three nutrient sources: microbial inoculants or biofertilizers including *Azotobacter*, *Azospirillum*, and phosphate solubilising bacteria (PSB); inorganic fertilizers, and organic manures. However, INM further prescribes that selected nutrient inputs be used judiciously to ensure optimum supply of all essential nutrients for sustainable crop production. Onion is a heavy feeder of mineral elements.

Comment [RL2]: Provide a sub-section: **Objectives of the Study** and vividly discuss the meaning of "effect". For instance, what and how to measure, etc.

2.METHODOLOGY

The experiment conducted during *Kharif* season in the years, of 2021-22 and 2022-23 both the year same time at Vegetable Research Farm, Department of Vegetable Science, Chandra Shekhar Azad University of Agriculture and Technology, Kalyanpur, Kanpur. The experiment was laid out in randomized block design with three replications. The treatments consisted of **T1**- Control: **T2**- 100% RDF (NPK @ 120:60:80 kg/ha; **T3**-75% RDF+ FYM 6 t/ha: **T4**- 75%RDF+ Vermicompost@2 t/ ha; **T5**- 75%RDF+FYM @ 3t/ha+vermicompost@1 t/ha; **T6**- 75%RDF + FYM@ 3t/ha+Vermicompost@ 1t/ha+ Biofertilizer (Azotobacter +PSB @5kg/ha each):**T7**- 50% RDF + FYM @ 12t/ha; **T8**- 50%RDF + Vermicompost @ 4t/ha: **T9**-50%RDF+ FYM @6t/ha + Vermicompos @ 2t/ha: **T10**- 50%RDF + FYM @ 6t/ha + Vermicompost @2t/ha+ Biofertilizer (Azotobacter + PSB @ 5kg/ha each).having an even topography with adequate irrigation and proper drainage facilities. The soil was sandy loam, good in fertility. Geographically Kanpur is situated in the Gangetic plains of alluvium of Central U.P. It lies in altitude and longitude ranges between 25.28° to 28.50° 44 north and 79.31° to 84.34° east at elevation of 125.90 m above mean sea level. Kanpur is characterized by sub-tropical climate with hot dry summer and cold winters. The topography of experimental field was fairly uniform during experimental year. According to standard processors, the soil samples were collected randomly from the experiment field at the depth of 0-15cm. The randomly collected sample were thoroughly mixed well and composite soil sample was made up (500 g) of soil. Thereafter, the sample was analyzed to determine the physical and chemical analysis of soil testing laboratory of Chandra Shekhar Azad University of Agriculture & Technology, Kanpur (U.P.).

Comment [RL3]: Specifically describe the methodology on what approach to take and what parameters to study to determine the "effect" in the objective.

T1	74.78	75.89	21.10	20.24	31.68	30.48	25.86	26.86
T2	81.20	80.57	24.75	23.56	34.55	31.65	23.10	24.15
T3	78.65	79.73	22.55	23.20	37.75	34.54	24.33	23.23
T4	77.56	78.68	23.53	25.65	35.88	33.87	20.86	21.86
T5	93.63	95.64	27.64	28.75	39.64	38.85	20.11	22.12
T6	98.76	101.20	28.73	29.10	38.24	39.47	21.53	21.64
T7	89.85	93.22	25.46	26.75	38.00	38.64	22.75	20.88
T8	92.75	94.11	26.75	27.12	38.88	36.75	22.86	21.45
T9	96.41	98.86	25.86	27.86	40.20	39.20	20.56	21.11
T10	102.10	104.45	29.86	32.32	42.65	41.66	19.75	18.64
SE (m) ±	2.961	3.016	0.844	0.851	1.263	1.223	0.89	0.905
CD (P=0.05)	8.864	9.032	2.526	2.549	3.782	3.661	2.664	2.711

Figure 1. Effect of Integrated Nutrient Management on Average bulb weight (g) of onion

Comment [RL4]: Where is the corresponding narrative to explain and subscribe with the results shown in figures 1 and 2?

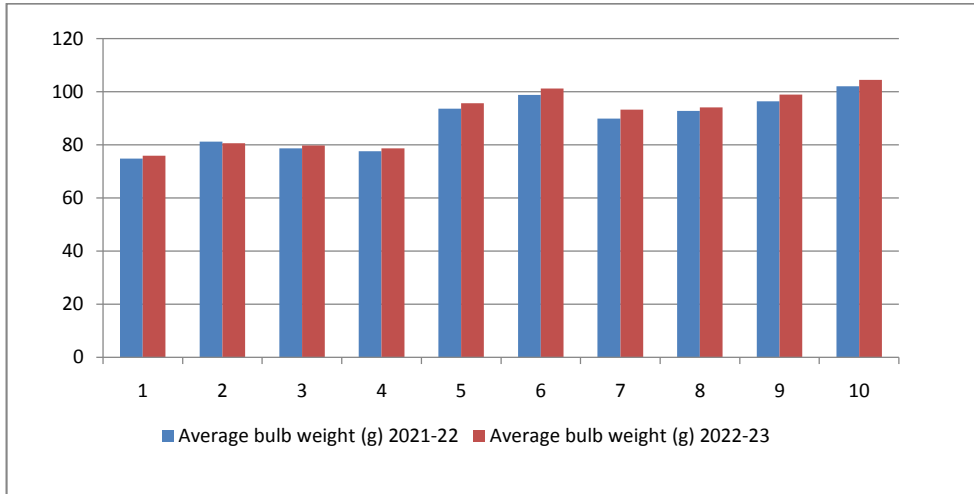
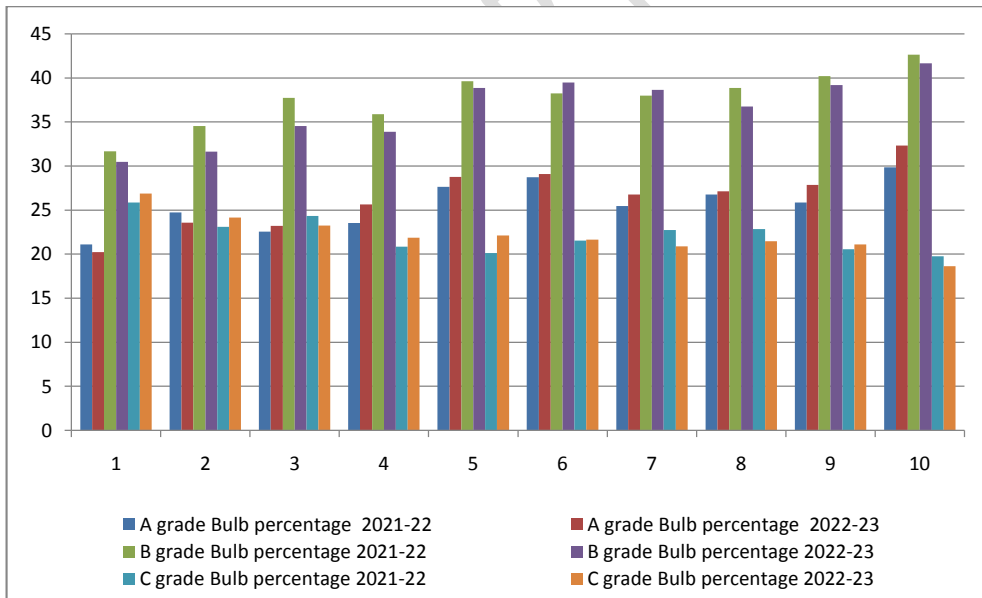


Figure 2. Effect of Integrated Nutrient Management on A,B,C grade Bulb percentage of onion



The data on days takes to harvesting, Bolting percentage of bulb, Double bulb Percentage as influenced by various treatments are presented in Table-2. Perusal of data indicates significant effects of different

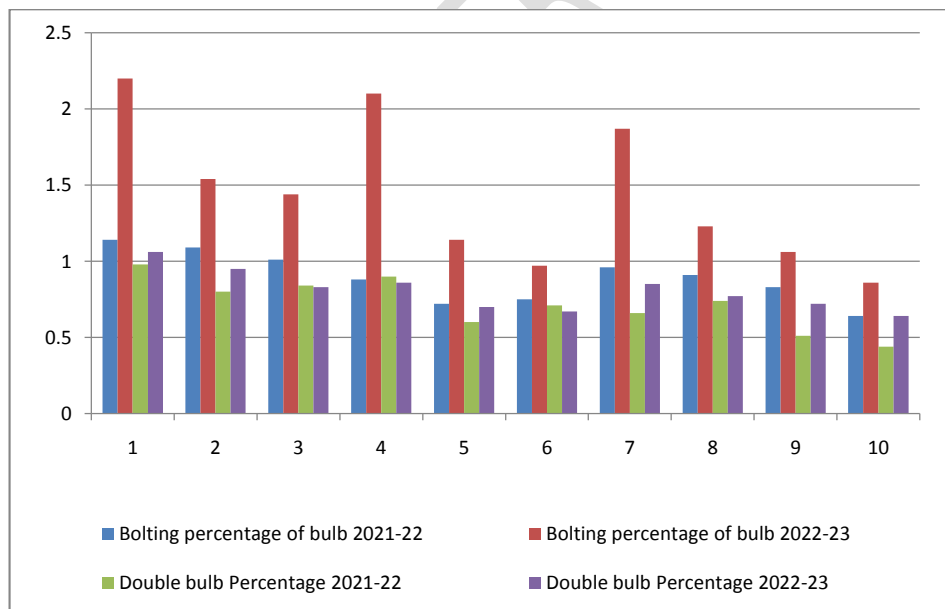
treatments on days takes to harvesting during both the years With respect to days takes to harvesting after transplanting, during 2021-22, the minimum days takes to harvesting (120.23 days) was recorded in T10- 50% RDF + FYM @ 6t/ha + Vermicompost @ 2t/ha +Biofertilizer (Azotobacter +PSB @ 5 kg/ha each). The maximum days takes to harvesting (132.88 days) was recorded in case of control (T1). During 2022-23, the minimum days to days takes to harvesting (115.07 days) was recorded in case of T10- 50% RDF + FYM @ 6t/ha + Vermicompost @ 2t/ha +Biofertilizer (Azotobacter +PSB @ 5 kg/ha each)which at par with T6 and T9. The maximum days to days takes to harvesting (127.37 days) was recorded in case of control (T1). The minimum bolting percentage(0.64%) was recorded in T10- 50% RDF + FYM @ 6t/ha + Vermicompost @ 2t/ha +Biofertilizer (Azotobacter +PSB @ 5 kg/ha each) which at par with T5 and T6 . The maximum bolting percentage(1.14%) was recorded in case of control (T1). During 2022-23, the minimum bolting percentage(0.86%) was recorded in case of T10- 50% RDF + FYM @ 6t/ha + Vermicompost @ 2t/ha +Biofertilizer (Azotobacter +PSB @ 5 kg/ha each). The maximum bolting percentage(2.20%) was recorded in case of control (T1). the minimum percentage of double bulb (0.44%) was recorded in T10- 50% RDF + FYM @ 6t/ha + Vermicompost @ 2t/ha +Biofertilizer (Azotobacter +PSB @ 5 kg/ha each). The maximum percentage of double bulb (0.98%) was recorded in case of control (T1). During 2022-23, the minimum percentage of double bulb (0.64%) was recorded in case of T10- 50% RDF + FYM @ 6t/ha + Vermicompost @ 2t/ha +Biofertilizer (Azotobacter +PSB @ 5 kg/ha each) which at par with T5,T6 and T9. The maximum percentage of double bulb (1.06%) was recorded in case of control (T1).This may be attributable to the fact that the combined use of organic manures and inorganic fertilisers boosted leaf and chlorophyll content, which may have accelerated photosynthetic activity and, as a result, increased the supply of carbohydrates to the plants. The application of 50% RDF + FYM @ 6t/ha + Vermicompost @ 2t/ha +Biofertilizer (Azotobacter +PSB @ 5 kg/ha each) favored the metabolic and auxin activities in plant. vermicompost and biofertilizers improved physical, chemical and biological properties of soil which consequently increased the value of yields attributing parameters of onion and finally yield. These finding are in conformity with [1] [2] [3] [4] [5] [6] [7] [8] [9].

Table 2. Effect of Integrated Nutrient Management of Days takes to harvesting, Bolting percentage of bulb, Double bulb Percentage of onion

Treatment no.	Days takes to harvesting		Bolting percentage of bulb		Double bulb Percentage	
	2021-22	2022-23	2021-22	2022-23	2021-22	2022-23
T1	132.88	127.37	1.14	2.20	0.98	1.06
T2	127.81	124.10	1.09	1.54	0.80	0.95
T3	128.82	126.69	1.01	1.44	0.84	0.83

T4	132.10	125.29	0.88	2.10	0.90	0.86
T5	124.76	123.61	0.72	1.14	0.60	0.70
T6	122.65	118.16	0.75	0.97	0.71	0.67
T7	128.93	120.70	0.96	1.87	0.66	0.85
T8	126.55	121.99	0.91	1.23	0.74	0.77
T9	125.64	118.89	0.83	1.06	0.51	0.72
T10	120.23	115.07	0.64	0.86	0.44	0.64
SE (m) ±	2.088	2.081	0.038	0.072	0.032	0.035
CD (P=0.05)	6.252	6.232	0.113	0.214	0.096	0.105

Figure 3. Effect of Integrated Nutrient Management on Bolting percentage of bulb, Double bulb Percentage of onion



Comment [RL5]: Where is the discussion on Figure 3?

Comment [RL6]: It is necessary that you provide a sub-section on: Summary Discussion of the Results?

The resulting summary discussion should and must be able to translate and laymanized the highly technical results of the study so the readers could easily decipher and realize the relevance of the study.

How do the results accomplished the objectives as written in the abstract?

4.CONCLUSION

On the basis of results, it could be concluded that the application of T10- 50% RDF + FYM @ 6t/ha + Vermicompost @ 2t/ha +Biofertilizer (Azotobacter +PSB @ 5 kg/ha each) was found to be the best treatment combination in terms of Average bulb weight,A grade bulb percentage, B grade bulb percentage, C grade, days takes to harvesting, bolting percentage of bulb, double bulb Percentage.

REFERENCES

1. Brar, K.R., Sharma,R., And Kaur, J.,(2015). Effect of organic sources of nutrients on yield and quality of onion (*allium cepa* l.) *Indian journal of ecology*, 42(1): 266-267
2. Dhaker, B., R. K. Sharma, B. G. Chhipa and R. S. Rathore (2017). Effect of different organic manures on yield and quality of onion (*Allium cepa* L.). *Int. J. Curr. Microbiol. App. Sci.* 6(11): 3412-3417.
3. Gurjar, J. S., S. S. Singh, K. N. Nagaich, P. K. S. Gurjar and L. Singh (2017). Effect of planting methods, organic nutrient sources and biofertilizers on bulb yield and quality of kharif onion (*Allium cepa* L.). *Plant Archives*, 17(1), 439-444.
4. Kalirawna, A., Bahadur, V., Kalirawana, S., Kumari, S., Serawat, R., and Kumar, P. (2022). Effect of organic manures and inorganic fertilizers on growth, yield and quality of onion (*Allium cepa* L.) cv. Nasik Red. *The Pharma Innovation Journal* 2022; 11(2): 1389-1392.
5. Kaur, A. and S. Singh (2019). Role of various fertilizers and azotobacter (biofertilizer) on the performance of kharif onion (*Allium cepa* L.) cv. Agrifound Dark Red. *J. Pharmacogn. Phytochem. SP4*: 146-151.
6. Krishnamurthy, D. and Sharanappa, (2005),effect of sole and integrated use of improved composts and npk fertilizers on the quality, productivityand shelf life of bangalore rose red onion (*allium cepa* l.). *Mysore j. Agric. Sci.*, **39** (3) : 355-361
7. Prusty, M., Mishra, N., Kar, D.S. and Pal, S.(2019) effect of integrated nutrient management on growth and yield of onion (*allium cepa* l.) Cv. Bhima super. *International journal of agriculture sciences*, issn: 0975-3710 & e-issn: 0975-9107, volume 11, issue 4, pp.- 7910-7912.
8. Sharma,A.,panja,P., and mandal, J.,(2017). Effect of intregated nutrient management on onion (*allium cepa* l.) Yield, quality attributes, soil properties and production economics under field condition. *Indian journal of ecology* : 44 (5): 355-359.
9. Tripathy, P., Sahoo, B.B., Priyadarshini, A., Das, S.K. and Dash, D.K. (2013). Effect of sources and levels of sulphur on growth, yield and bulb quality in onion (*allium cepa* l.). *International journal of bio-resource and stress management*, 4(4): 641-644.

Comment [RL7]: There must be a sub-section on: **Recommendations** to suggest future studies of similar nature.

Comment [RL8]: Should provide more detailed discussion to warrant relevance of the study.

Did the study accomplished the objectives of the study. This was never implied in the discussion.

Comment [RL9]: Need to add more literatures of recent publications to strongly support the study.