

Original Research Article

Effect of bio-agents and elicitors on *Alternaria brassicae* of mustard (*Brassica juncea* L.)

ABSTRACT

Rapeseed-mustard is one of the major oilseed crops cultivated in India. *Alternaria brassicae* is the most destructive pathogen of oilseeds. The present study aims to evaluate the effect of bio-agents and elicitors on *Alternaria brassicae* of mustard *in vitro* using dual culture technique and poison food technique in Completely Randomized Design (CRD). The study was conducted at the Department of Plant Pathology Laboratory, Sam Higginbottom University of Agriculture, Technology and Sciences, Prayagraj. The results revealed that among bio-agents, *Trichoderma viride* + *Pseudomonas fluorescens* (87.70%) recorded the maximum per cent inhibition of mycelial growth of *Alternaria brassicae*, followed by *Trichoderma viride* (82.60%). Among elicitors, the maximum per cent inhibition of the pathogen was recorded by salicylic acid at 150 ppm (75.33%), followed by salicylic acid at 100 ppm (58.69%).

Formatted: Font: (Default) Times New Roman, 12 pt

Formatted: Font: (Default) Times New Roman, 12 pt

Formatted: Font: (Default) Times New Roman, 14 pt

Formatted: Font: (Default) Times New Roman, 12 pt

Formatted: Left

Formatted: Font: (Default) Times New Roman, 12 pt

Formatted: Font: (Default) Times New Roman, 12 pt, Bold

Formatted: Font: (Default) Times New Roman, 12 pt

Formatted: Font: (Default) Times New Roman, 12 pt

Formatted: Font: (Default) Times New Roman, 12 pt, Not Italic

Formatted: Font: (Default) Times New Roman, 12 pt

Formatted: Font: (Default) Times New Roman, 12 pt, Not Italic

Formatted: Font: (Default) Times New Roman, 12 pt

Formatted: Font: (Default) Times New Roman, 12 pt, Not Italic

Formatted: Font: (Default) Times New Roman, 12 pt

Formatted: Font: (Default) Times New Roman, 12 pt, Not Italic

Formatted: Font: (Default) Times New Roman, 12 pt, Not Italic

Formatted: Font: (Default) Times New Roman, 12 pt

Formatted: Font: (Default) Times New Roman, 12 pt, Not Italic

Formatted: Font: (Default) Times New Roman, 12 pt, Not Italic

Formatted: Font: (Default) Times New Roman, 12 pt

Formatted: Font: (Default) Times New Roman, 12 pt, Not Italic

Formatted: Font: (Default) Times New Roman, 12 pt

Formatted: Font: (Default) Times New Roman, 12 pt, Not Italic

Formatted: Font: (Default) Times New Roman, 12 pt

Formatted: Font: (Default) Times New Roman, 12 pt, Not Italic

Formatted: Font: (Default) Times New Roman, 12 pt, Not Italic

Formatted: Font: (Default) Times New Roman, 12 pt, Not Italic

Formatted

Formatted

alternaria blight were selected for isolation of the pathogen. These selected infected spots were washed 3-4 times in sterilized distilled water and then surface sterilized by dipping in 1% NaOCl solution for 1 minute, followed by washing with sterilized water 3-4 times. Excess moisture was removed by putting these pieces in between two folds of sterilized blotter paper under aseptic conditions in the inoculation chamber. Surface sterilized leaf spot pieces were then aseptically transferred into 9 cm petri dishes containing Potato Dextrose Agar (PDA) and incubated at 25±2°C for 7 days. Thereafter, growing mycelia from margin of apparently distinct colonies of the leaf spot pieces on the medium were aseptically transferred into another petri plate containing PDA medium, where it was grown for 7 days at 25±2°C in the BOD incubator.

Formatted

2.2 Identification

Examination of the fungal colony characteristics were done through microscopic examination. Using a sterile needle, a small portion of the culture was taken and placed on a sterile glass slide. It was stained using lactophenol and cotton blue. Then, the microscope was used for the examination of morphology and culture characteristic so fungal structures [8].

Formatted

Formatted

2.3 Morphological characterization

Identification of *Alternaria* is done by morphological characteristics like size and shape of conidia and cultural characters like colony outline, shape, colour and texture. The genus could be organized into six groups based upon common characteristics of conidia length, width and septations, with each group designated by a typical species. Three sections for the genus based upon the formation of conidia in long chains (Longicatenatae), short chains (Brevicatenatae), or singly (Noncatenatae). *Alternaria* species are either parasites on living plants or saprophytes on organic substrate. The host range of pathogenic *Alternaria* is very broad. It is easy

Formatted

Formatted: Font: (Default) Times New Roman, 12 pt, Not Italic, English (United States)

Comment [L1]: correct

Formatted: Font: (Default) Times New Roman, 12 pt, Not Italic, English (United States)

to recognize *Alternaria* species by the morphology of their large conidia. They are catenate, formed in chains or solitary, typically ovoid to obclavate, often beaked, pale brown to black, multicelled and muriform. Based on morphological characteristics, the causal fungus was identified as *Alternaria brassicae* (Berk.) Sacc. Colonies of *A. brassicae* were amphigenous effused rather pale olive, hairy and immersed mycelium. Conidia were produced in chains of up to 4 with average 3-8 transverse septa and 1-8 longitudinal septa, pale olive and the beak about 1/3 to 1/2 the length of the conidia [9].

Comment [L2]: correct distance word

Formatted

2.4 Purification of culture

The culture of *Alternaria brassicae* was purified by single spore technique and maintained by periodic sub-culturing on PDA petri plates and slants. These were incubated at $25 \pm 2^\circ\text{C}$ temperature.

2.5 Culture of *Trichoderma viride*:

In a clean and sterilized test tube, 1 g of the product was mixed in 9 ml of sterilized distilled water to make a 10^{-1} dilution (1:10). It was thoroughly shaken and 1 ml of the suspension was mixed with 9 ml of sterile water in a tube to make a 10^{-2} dilution (1:100). To achieve a 10^{-6} dilution, four more serial dilutions were performed in the same manner. 1 ml of this suspension was transferred to sterile petri plates, followed by 15-20 ml of sterilized, melted and cooled PDA medium. The plates were gently rotated to allow it to solidify. For five to seven days, the petri plates were incubated in a BOD incubator at $25 \pm 2^\circ\text{C}$. The growth of a typical *Trichoderma viride* colony was observed.

2.6 Culture of *Pseudomonas fluorescens*

In a clean and sterilized test tube, 1 g of the product was mixed in 9 ml of sterilized distilled water to make a 10^{-1} dilution (1:10). It was thoroughly shaken and 1 ml of the suspension was mixed with 9 ml of sterilized water in a tube to make a 10^{-2} dilution (1:100). Six more serial dilutions were performed in the same manner to achieve a 10^{-8} dilution. 15 ml of sterilized, molten, and cooled King's B medium was added to 1 ml of this suspension in sterile petri plates. The plates were gently rotated to allow it to solidify. The petri plates were incubated in BOD incubator at $30 \pm 2^\circ\text{C}$ for two days. The development of typical *Pseudomonas fluorescens* colony was observed.

2.7 Evaluation of bio-agent on *Alternaria brassicae* by dual culture technique

Trichoderma viride was evaluated *in vitro* on *A. brassicae* by applying dual culture technique [10]. Seven days old cultures of the test bio-agent and test fungus (*A. brassicae*) grown on potato dextrose agar medium was used for the study. Twenty ml of PDA was poured into sterile petri plates. Culture growth of the test fungus and the bio-agent were cut out with the well sterilized corkborers with a disc of size 5 mm in diameter. Then the test fungus and bio-agent were placed aseptically with the help of two culture discs at equidistance and opposite with each other on solidified PDA medium in petri plates and one control was maintained wherein only test fungus was grown and these plates were incubated at $25 \pm 1^\circ\text{C}$.

Formatted: Font: (Default) Times New Roman, 12 pt, Not Italic

Formatted: Font: (Default) Times New Roman, 12 pt

Formatted: Font: (Default) Times New Roman, 12 pt, Not Italic, English (United States)

Formatted: Font: (Default) Times New Roman, 12 pt

Formatted: Font: (Default) Times New Roman, 12 pt, Not Italic, English (United States)

Formatted: Font: (Default) Times New Roman, 12 pt

Formatted: Font: (Default) Times New Roman, 12 pt, Not Italic, English (United States)

Formatted: Font: (Default) Times New Roman, 12 pt

Formatted: Font: (Default) Times New Roman, 12 pt, Not Italic, English (United States)

Formatted: Font: (Default) Times New Roman, 12 pt, Not Italic, English (United States)

Formatted: Font: (Default) Times New Roman, 12 pt, Not Italic, English (United States)

Formatted: Font: (Default) Times New Roman, 12 pt, English (United States)

Formatted: Font: (Default) Times New Roman, 12 pt, English (United States)

Formatted: Font: (Default) Times New Roman, 12 pt

Formatted: Font: (Default) Times New Roman, 12 pt, Not Italic, English (United States)

Formatted: Font: (Default) Times New Roman, 12 pt, Not Italic, English (United States)

Formatted: Font: (Default) Times New Roman, 12 pt, Not Italic, English (United States)

Formatted: Font: (Default) Times New Roman, 12 pt, Not Italic, English (United States)

Formatted: Font: (Default) Times New Roman, 12 pt, Not Italic, English (United States)

Formatted: Font: (Default) Times New Roman, 12 pt, English (United States)

Formatted: Font: (Default) Times New Roman, 12 pt, English (United States)

Formatted: Font: (Default) Times New Roman, 12 pt, Not Italic, English (United States)

Formatted: Font: (Default) Times New Roman, 12 pt

Formatted: Font: (Default) Times New Roman, 12 pt, Not Italic, English (United States)

Formatted: Font: (Default) Times New Roman, 12 pt

Formatted: Font: (Default) Times New Roman, 12 pt, English (United States)

Formatted: Font: (Default) Times New Roman, 12 pt, Not Italic, English (United States)

Formatted: Font: (Default) Times New Roman, 12 pt

Pseudomonas fluorescens was evaluated by streaking at opposite side to test pathogen. One control was maintained where in only test fungus was grown. The plates were incubated at 28±2°C for four days. *Trichoderma viride* + *Pseudomonas fluorescens* was evaluated by streaking *P. fluorescens* grown on King's B medium on one side of a petri plate containing PDA. The other side of the petri plate was inoculated with 5 mm disc of *T. viride* (7 days old) and at the centre seven days old culture of test fungus was placed. Then one control was maintained wherein only the test fungus was grown and these plates were incubated at 28±2°C for four days.

Formatted

Comment [L3]: correct

Formatted

2.8 Evaluation of elicitors and fungicide on the colony growth of test fungus

Formatted

For the evaluation of antifungal activity of the elicitors and fungicide using the poisoned food technique according to [11], salicylic acid @ 50 ppm, 100 ppm and 150 ppm, *Ascophyllum nodosum* @ 1%, 2% and 3% and ridomil gold (treated check) @ 0.2% as dissolved in 100 ml of sterilized molten PDA prior to inoculation of *Alternaria brassicae*. PDA plates without elicitors but inoculated with *Alternaria brassicae* was served as control. Five replications were maintained for all the treatments and plates were incubated in BOD incubator at a temperature of 25±1°C. The colony diameter of the fungus was measured on 7th day of incubation and compared with the colony growth of the fungus in control. Percent inhibition of mycelial growth was calculated using the following formula.

Formatted

Formatted

$$I = \frac{C - T}{C} \times 100$$

Formatted

where,

Formatted

I = Percent inhibition,

Formatted

C = Growth (mm) of test fungus in untreated control plates,

Formatted

T = Growth (mm) of test fungus in treated plates.

Formatted

3. RESULTS AND DISCUSSION

Formatted

In present investigation two bio-control agents, viz., *Trichoderma viride* and *Pseudomonas fluorescens* were screened for their antagonistic potential on *Alternaria brassicae* by dual culture technique and elicitors by poison food technique. The results are shown in (tables Tables 1 and 2, figures 1 and 2), plates I (a), (b), and (c), and plate II below.

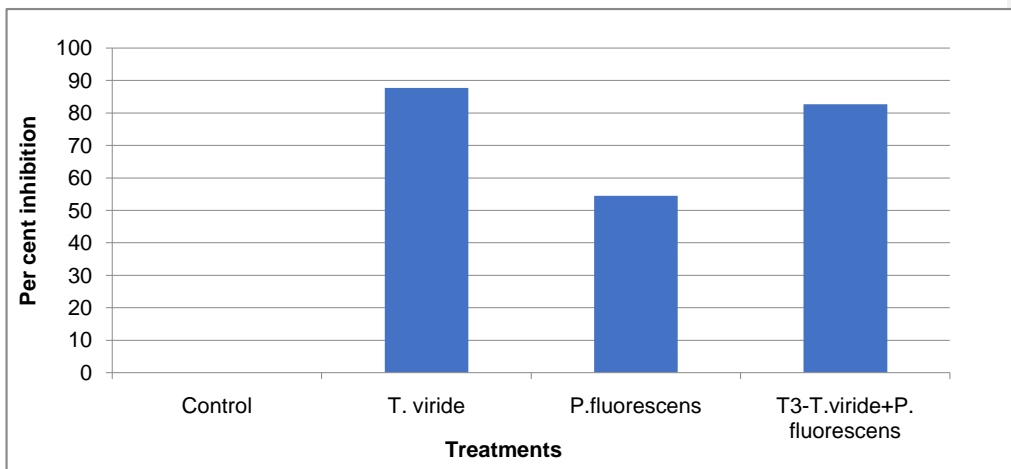
Formatted

3.1 Effect of bio-agent on *Alternaria brassicae* by dual culture technique

Formatted

Data presented in (Table 1) depicted in figure 1 and plate I (a), (b) and (c) indicate that bio-

Formatted: Font: (Default) Times New Roman, 12 pt, Not Italic, English (United States)



Formatted: Font: (Default) Times New Roman, 12 pt, Not Bold

Formatted: Font: (Default) Times New Roman, 12 pt

Figure 1. Effect of bio-agents on *Alternaria brassicae* by dualculture technique

Formatted: Font: (Default) Times New Roman, 12 pt, English (United States)

Formatted: Font: (Default) Times New Roman, 12 pt, English (United States)

Formatted: Font: (Default) Times New Roman, 12 pt, English (United States)

Formatted: Font: (Default) Times New Roman, 12 pt, English (United States)

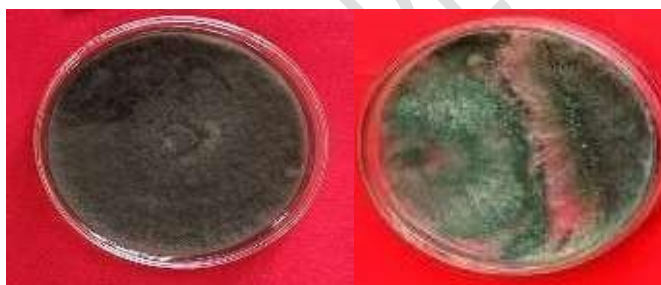
Formatted: Font: (Default) Times New Roman, 12 pt, English (United States)

Formatted: Font: (Default) Times New Roman, 12 pt, English (United States)

Formatted: Font: (Default) Times New Roman, 12 pt, English (United States)

Formatted: Font: (Default) Times New Roman, 12 pt

Formatted: Font: (Default) Times New Roman, 12 pt



T₀ – Control (168 hrs)

@168hrs

Plate I (a) Effect of *T. viride* on the radial growth (mm) of *Alternaria brassicae*

Formatted: Font: (Default) Times New Roman, 12 pt

Formatted: Font: (Default) Times New Roman, 12 pt

Formatted: Font: (Default) Times New Roman, 12 pt

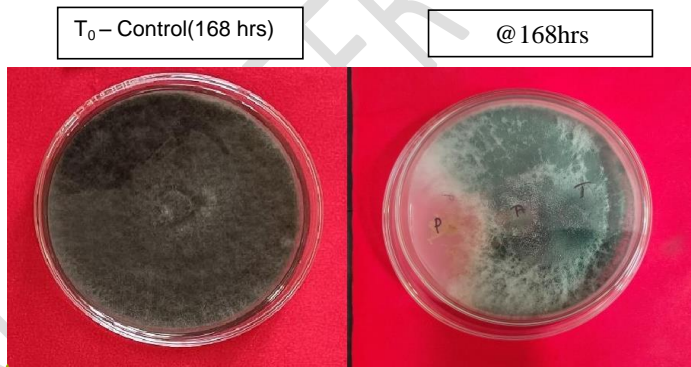
Formatted: Font: (Default) Times New Roman, 12 pt



T₀ – Control(168 hrs)

@ 168hrs

Plate I(b) Effect of *P. fluorescens* on the radial growth (mm) of *Alternaria brassicae*



T₀ – Control(168 hrs)

@ 168hrs

Plate I(c) Effect of *T. viride* + *P. fluorescens* on the radial growth (mm) of *Alternaria brassicae*

3.2 Effect of elicitor on the mycelial growth of *Alternaria brassicae*

The data presented in (table-Table 2, depicted in figure 2 and plate II) indicate that elicitors (salicylic acid and *A. nodosum*) significantly inhibited the mycelial growth of *Alternaria brassicae*. Among the elicitors, maximum per cent inhibition was recorded in the treatment salicylic acid @ 150ppm (75.33%), followed by salicylic acid @ 100ppm (58.69%), salicylic acid @ 50ppm (32.44%), *Ascophyllum nodosum* @ 3%

Formatted: Font: (Default) Times New Roman, 12 pt, Not Bold

Formatted: Font: (Default) Times New Roman, 12 pt

Formatted: Font: (Default) Times New Roman, 12 pt

Formatted: Font: (Default) Times New Roman, 12 pt

Formatted: Font: (Default) Times New Roman, 12 pt

Formatted: Font: (Default) Times New Roman, 12 pt

Formatted: Font: (Default) Times New Roman, 12 pt

Formatted: Font: (Default) Times New Roman, 12 pt

Formatted: Font: (Default) Times New Roman, 12 pt, Not Bold

Formatted: Font: (Default) Times New Roman, 12 pt

Formatted: Font: (Default) Times New Roman, 12 pt

Formatted: Font: (Default) Times New Roman, 12 pt

Formatted: Font: (Default) Times New Roman, 12 pt

Formatted: Font: (Default) Times New Roman, 12 pt

Formatted: Font: (Default) Times New Roman, 12 pt

Formatted: Font: (Default) Times New Roman, 12 pt

Formatted: Font: (Default) Times New Roman, 12 pt

Formatted: Font: (Default) Times New Roman, 12 pt

Formatted: Font: (Default) Times New Roman, 12 pt

Formatted: Font: (Default) Times New Roman, 12 pt

Formatted: Font: (Default) Times New Roman, 12 pt

Formatted: Font: (Default) Times New Roman, 12 pt, Not Bold, English (United States)

Formatted: Font: (Default) Times New Roman, 12 pt, Not Bold, English (United States)

Figure 2. Effect of elicitors on the mycelial growth of *Alternaria brassicae*

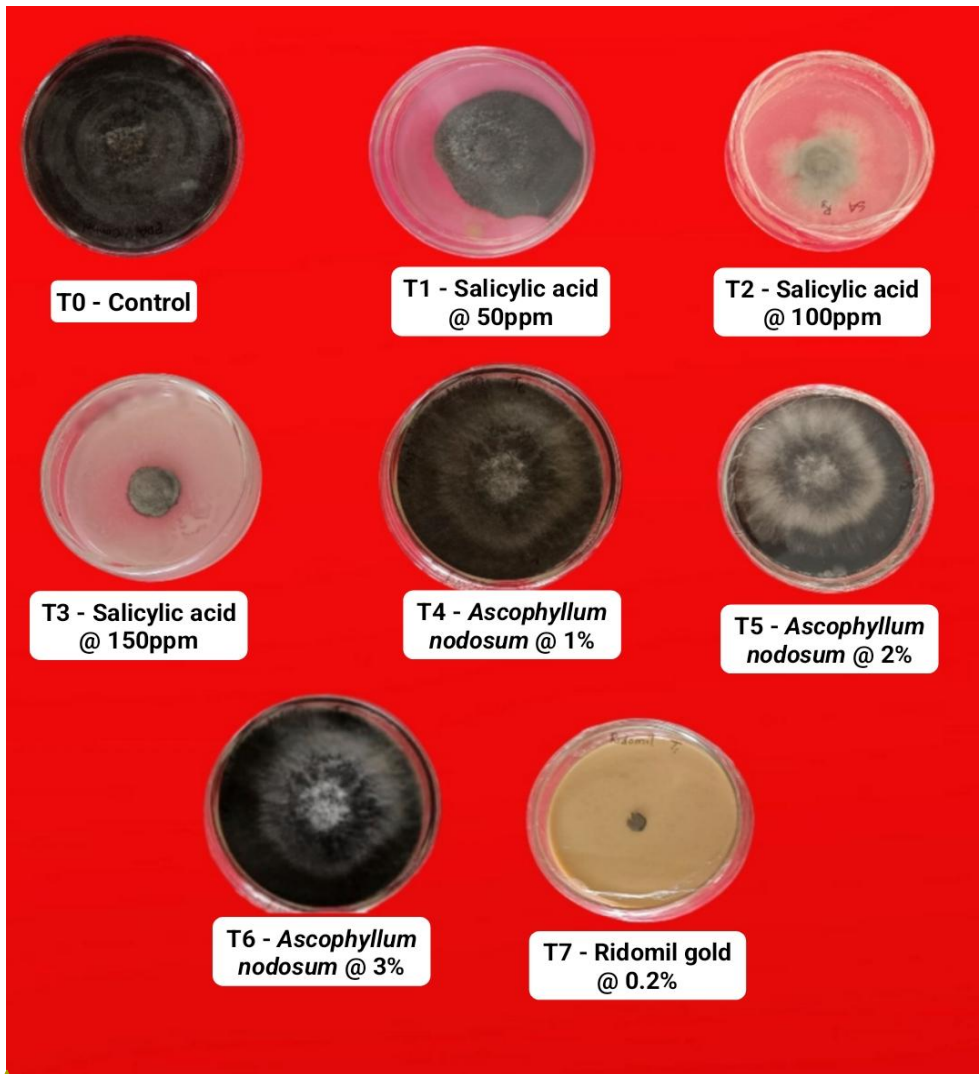


Plate II Effect of elicitors on the mycelial growth of *Alternaria brassicae*

4. CONCLUSION

Based on the aforesaid data the lab experiments, antagonistic microbes like *T.*

Formatted: Font: (Default) Times New Roman, 12 pt

Formatted: Font: (Default) Times New Roman, 12 pt

Formatted: Font: (Default) Times New Roman, 12 pt

Formatted: Font: (Default) Times New Roman, 12 pt

Formatted: Font: (Default) Times New Roman, 12 pt

Formatted: Font: (Default) Times New Roman, 12 pt

Formatted: Font: (Default) Times New Roman, 12 pt

Formatted: Font: (Default) Times New Roman, 12 pt

Formatted: Font: (Default) Times New Roman, 12 pt

Formatted: Font: (Default) Times New Roman, 12 pt, English (United States)

Formatted: Font: (Default) Times New Roman, 12 pt

Formatted: Font: (Default) Times New Roman, 12 pt, Not Bold, English (United States)

viride+*Pseudomonas fluorescens* effectively inhibited *Alternaria brassicae* in mustard. These bio-control agents have unique antifungal properties, obtaining similar results to conventional chemical fungicides. Among the elicitors used, salicylic acid effectively inhibited the pathogen. This highlights the importance of bio-agents and elicitors, and their efficacy in managing pathogens. Further studies are needed to identify dominant strains of microorganisms for specific geographical areas, reducing the demand for chemical substitutes that are harmful over time.

REFERENCES

1. Saleem N, Jan SA, Atif MJ, Khurshid H, Khan S, Abdullah M. Multivariate based variability within diverse Indian mustard (*Brassica juncea* L.) genotypes. *Journal of Genetics*. 2017;7(7):69-83.
2. Mamgain A, Roychowdhury R, Tah J. *Alternaria* pathogenicity and its strategic control. *Research Journal of Biology*. 2013; 1:01-09.
3. Meena PD, Rani A, Meena R, Sharma P, Gupta R, Chowdappa P. Aggressiveness, diversity and distribution of *Alternaria brassicae* isolates infecting oilseed Brassica in India. *African Journal of Microbiology Research*. 2012;6(24):5249-5258.
4. Pandey N, Adhikhari M, Bhantana B. *Trichoderma* and its prospects in agriculture of Nepal: An overview. *International Journal of Applied Sciences and Biotechnology*. 2019;7(3):309-316.
5. Gupta S, Didwania N, Singh D. Biological control of mustard blight caused by *Alternaria brassicae* using plant growth promoting bacteria. *Current Plant Biology*. 2020;23:100-166.
6. Mohamed HI, El-Shazly HH, Badr A. Role of salicylic acid in biotic and abiotic stress tolerance in plants. *Plant Phenolics in Sustainable Agriculture*. Springer, Singapore; 2020.
7. Subramanian S, Sangha JS, Gray BA, Singh RP, Hiltz D, Critchley AT, Prithiviraj B. Extract of the marine brown macroalga, *Ascophyllum nodosum*, induce jasmonic acid dependent systemic resistance in *Arabidopsis thaliana* against *Pseudomonas syringae* pv. *tomato* DC3000 and *Sclerotinia sclerotiorum*. *European Journal*

Formatted: Font: (Default) Times New Roman, 12 pt

Formatted: Font: (Default) Times New Roman, 12 pt, Not Italic

Formatted: Font: (Default) Times New Roman, 12 pt

Formatted: Font: (Default) Times New Roman, 12 pt, Not Italic, English (United

Formatted: Font: (Default) Times New Roman, 12 pt, Not Italic, English (United

Formatted: Font: (Default) Times New Roman, 12 pt, Not Italic, English (United

Formatted: Font: (Default) Times New Roman, 12 pt, Not Italic, English (United

Formatted: Font: (Default) Times New Roman, 12 pt, Not Italic, English (United

Formatted: Font: (Default) Times New Roman, 12 pt, Not Italic, English (United

Formatted: Font: (Default) Times New Roman, 12 pt, Not Italic, English (United

Formatted: Font: (Default) Times New Roman, 12 pt, Not Italic, English (United

Formatted: Font: (Default) Times New Roman, 12 pt, Not Italic, English (United

Formatted: Font: (Default) Times New Roman, 12 pt, Not Italic, English (United

Formatted: Font: (Default) Times New Roman, 12 pt, Not Italic, English (United

Formatted: Font: (Default) Times New Roman, 12 pt

Formatted: Font: (Default) Times New Roman, 12 pt, Not Italic, English (United

Formatted: Font: (Default) Times New Roman, 12 pt

Formatted: Font: (Default) Times New Roman, 12 pt, Not Italic, English (United

Formatted: Font: (Default) Times New Roman, 12 pt

Formatted: Font: (Default) Times New Roman, 12 pt, Not Italic, English (United

Formatted: Font: (Default) Times New Roman, 12 pt

Formatted: Font: (Default) Times New Roman, 12 pt, Not Italic, English (United

Formatted: Font: (Default) Times New Roman, 12 pt

Formatted: Font: (Default) Times New Roman, 12 pt, English (United States)

Formatted: Font: (Default) Times New Roman, 12 pt, Bold

Formatted: Font: (Default) Times New Roman, 12 pt, English (United States)

Comment [L4]: Correct spac

Formatted: Font: (Default) Times New Roman, 12 pt, Italic, English (United States)

