

## Original Research Article

### Genotoxic and Cytotoxic Activities of *Hippocratea africana* Loes. Ex. Engl. Celastraceae Root Extract

#### Abstract

*Hippocratea africana*, a medicinal plant, used in ethnomedicine for the treatment of antimalarial, diabetes, poisoning and inflammatory diseases was investigated for cytotoxic and genotoxic effects on the root meristem cells of *Allium cepa*. The extract and fractions were also screened for total flavonoid and phenol content using standard methods. Onion bulbs were exposed to 2.5 mg/ml, 5mg/ml, and 10 mg/ml concentrations of the leaf extract for macroscopic and microscopic analysis. Tap water was used as a negative control and Methotrexate (0.1 mg/ml) as a positive control. There was statistically significant ( $P < 0.05$ ) inhibition of root growth depending on concentration by the extract when compared with the negative control group. All the tested concentrations of the extract were observed to have cytotoxic effects on cell division in *A. cepa*. The extract-induced chromosomal aberrations and micronuclei (MNC) formations in *A. cepa* root tip cells were significant ( $p < 0.05$ ) when compared with the control group. The extract treatment further induced cell death, ghost cells, cell membrane damage, and binucleated cells. These results suggest that *Hippocratea africana* root extract possesses cytotoxic and genotoxic effects on *A. cepa* which is a result of its phytochemical constituents.

Keywords: *Hippocratea africana*; genotoxicity, cytotoxicity, *Allium cepa*

#### INTRODUCTION

*Hippocratea africana* (Willd.) Loes. ex Engl. (Celastraceae) syn. *Loeseneriella africana* (Willd.) N. Hallé is a green forest perennial climber widely distributed in tropical Africa [1]. "It is commonly known as the African paddle-pod and 'Ebaenangenang' by the Ibibios of Nigeria. The plant root has been variously used traditionally by the Ibibios of the Niger Delta region of Nigeria to treat ailments such as fever, convulsion, malaria, body pains, diabetes and diarrhoea" [2]. "The plant's root is also used for its antidote or anti-poison potential to treat liver diseases such as jaundice and hepatitis" [3,4,5]. Previous reports showed that the root extract possesses antimalarial [2,6], antioedema and antinociceptive [7], antidiabetic and hypolipidemic [8,9], antidiarrhoeal and antiulcer [10], hepatoprotective [11], antileishmanial, cytotoxicity and cellular antioxidant [12], antibacterial, anticonvulsant and depressant [13], in vivo alpha-amylase and alpha-glucosidase inhibitory [6], in vitro antioxidant [6,9] activities. Earlier studies had reported the presence of spirohexane-1-carboxylic acid, ethyl ester, 3-methoxy-2-methylphenol, 2,3-benzofurandione, 6-hydroxy-4-(p-hydroxybenzyl),  $\delta$ -3-Carene and  $\alpha$ -terpineol in ethyl acetate fraction [14] and the presence of monoterpenes (thujene, limonene, linalool,  $\alpha$ -phellandrene,  $\alpha$ -terpineol and sabinene) and sesquiterpenes (dehydromevalonic lactone), in the n-hexane fraction of the root extract [11]. "Also, two xanthenes; 1,3,6,7-tetrahydroxyxanthone and 1,3,6-trihydroxy-7-

methoxyxanthone, have been isolated from the root of *H. africana*”[15]. In this study, genotoxic and cytotoxic potentials of the root extract of *H africana* on *Allium cepa* test are reported.

## MATERIALS AND METHODS

### Preparation of extract

The plant parts (roots) were washed and air-dried on a laboratory table for 2 weeks. The dried materials were pulverized using a pestle and mortar. The powdered material was macerated in 50% ethanol for 72 hours. The liquid ethanol extract obtained by filtration was evaporated to dryness in a rotary evaporator 40°C. The extract was stored in a refrigerator at 4°C until used for the experiment reported in this study.

### *Allium cepa* test.

Small bulbs of the common onion, *A. cepa*, were procured from Jos, Northern region of Nigeria. Prior to initiating the test, the outer scales of the bulbs and the dry bottom plate were removed without destroying the root primordia using a small sharp knife and collected in a jar of water. The plant extract (20 g) was dissolved in 200 mL of distilled water. Different concentrations of 2.5 mg/mL, 5 mg/mL and 10 mg/mL respectively were prepared from the stock solution. Test concentrations of the plant's extract at 2.5 mg/mL, 5 mg/mL, and 10 mg/mL concentrations prepared in 15 mL beakers were arranged in a series of 5 per test concentration and filled up for each concentration. One *A. cepa* bulb was placed on top of each beaker, with the root primordia downward toward the liquid. Tap water was used as negative control and Methotrexate (0.1mg/mL) was used as positive control. After 24 hours, the test samples were changed in the controls and all test concentrations and photographs of the growing *A. cepa* roots were captured. This continued for 72 hours, after which the roots were counted per beaker in all the tested concentrations and the mean root number was calculated. Similarly, the roots' lengths were measured using a metre rule and the mean root length was calculated. These were also done for the control. Several root tips were cut at a length of 10 mm from the bulbs at 8:30 am and respectively fixed in 3:1 (v/v) ethanol: glacial acetic acid and 1N HCL before putting them in sample bottles and storing them in a refrigerator until use.

### Microscopy

The root tips were each placed in a test tube with 1N HCL and heated at 60°C for 6 minutes to fix and macerate them. Thereafter, the root tips were placed on microscopic slides on a blank background with forceps and were cut off at terminal tips. Two drops of 2% (w/v) orcein stain were added and mixed with the rootlets properly by knocking and stirring with a stirring spatula.

“Then a cover slip was placed at 45° to avoid air bubbles. After that, the cells were squashed by placing a filter paper on the cover slip and pressed slightly with a thumb. The coverslip was sealed with clear fingernail polish as suggested by Grant (1982) and each slide was examined using a Light Microscope at a magnification of x40. Microphotographs were taken to show chromosomal aberrations with the aid of an MD500 Amscope. The mitotic index and frequency of chromosomal aberration were calculated based on the number of aberrant cells per total cell scored at each concentration of each sample” [35]. The mitotic inhibition was determined using the following formula:

$$\text{Mitotic index} = \frac{\text{Number of dividing cells}}{\text{Total number of cells}} \times 100$$

$$\% \text{Aberrant cells} = \frac{\text{Number of Aberrant cells}}{\text{Total number of cells}} \times 100$$

$$\% \text{root growth of control} = \frac{\text{Overall mean root length h of test solution}}{\text{Overall mean root length h of control}} \times 100$$

The following parameters were used for determination of cytotoxicity and genotoxicity: (i) the mitotic index (MI) was calculated as the ratio between the number of mitotic cells and the total number of cells scored and expressed as percentage and (i) chromatin aberrations (stickiness, bridges, breaks and polar deviation) were used as endpoints for determination of cytogenetic effects and micronuclei (MNC) were scored in interphase cells per 500 cells.

#### Statistical Analysis.

Data obtained from this work were analysed statistically using one-way ANOVA followed by Tukey-Kramer multiple comparison test using Instant Graphpad software, (San Diego, USA). Differences between means were considered significant at a 5% level of significance i.e.  $p \leq 0.05$ .

### RESULTS

#### Physicochemical Characterization

The effect of *Hippocratea africana* root extract on different physicochemical parameters (root number and root length) of *Allium cepa* root tips are presented in Table 1. These results show that all tested concentrations of *H. africana* root extract (2.5 -10.0 mg/mL) caused significant ( $p < 0.05$ ) inhibition of roots growth relative to negative control. The inhibition of root number and root length was greater with increasing concentrations of the two extracts. The average root lengths in the negative and positive control (methotrexate) groups were  $4.16 \pm 1.26$  and  $0.25 \pm 0.22$  cm respectively. However, average root lengths in the 10 mg/mL treatment group decreased significantly compared to that of the negative control;  $1.51 \pm 0.41$  cm for *H. africana* (Table 1). Average root lengths in treatment groups decreased depending on concentration, significantly ( $p < 0.05$ ) when compared to negative control. The root morphology was nearly normal in the negative control group, but in *H. africana* (2.5 mg/mL)- treated group, the roots appeared slightly brownish and at 5 and 10 mg/mL of *H. africana* root extract, the roots appeared brownish (Table 1).

Table 1: Cytotoxicity of *Hippocratea africana* root extract on growing roots of onion (*Allium cepa*)

| Treatment group             | Concentration of extract (mg/mL) | Average root Number $\pm$ S.D | Average root length (cm) $\pm$ S.D |
|-----------------------------|----------------------------------|-------------------------------|------------------------------------|
| Negative control            | Tap water                        | $34.10 \pm 4.62$              | $4.66 \pm 1.26$                    |
| Methotrexate                | 0.1                              | $8.16 \pm 3.28^a$             | $0.25 \pm 0.22^a$                  |
| <i>Hippocratea Africana</i> | 2.5                              | $19.4 \pm 2.87^a$             | $3.46 \pm 0.75^a$                  |

|      |                         |                        |
|------|-------------------------|------------------------|
| 5.0  | 13.8±2.78 <sup>a</sup>  | 2.59±0.92 <sup>a</sup> |
| 10.0 | 25.60±4.27 <sup>a</sup> | 1.51±0.41 <sup>a</sup> |

Values are expressed as mean±SEM (n=5). Significant at p<0.05 when compared to negative control.

### Cytogenetic Analysis.

Table 2 shows the effects of *Hippocratea africana* root extract on cytogenetic parameters of *Allium cepa* roots. Cytogenetic analysis performed showed that the extract caused concentration-dependent and significant (p<0.05) decreases in the mitotic index when compared to that of negative control. *H. africana* root extract (10 mg/mL) had a mitotic index of 18.0 ±1.02 as compared to 57.60±12.34 recorded in the negative control group (Table 2).

Cytogenetic alterations caused by the extract are shown in Table 3. Chromosome and cytological alterations were observed in the negative control, methotrexate, and *Hippocratea africana* root extract-treated groups as depicted in Table 3. An analysis of chromosome aberrations observed showed that most of the fragments detected in the different treatments were of chromosome type, especially in the highest concentration of *H. africana* root (Table 3) (Figure 1(a)). The observation of chromosome breaks showed the clastogenic effect of extract. This was significant (p<0.05) when compared to the negative control group. Sticky metaphase and polar deviations (wrong directions of chromosome movement) were also observed (Figure 1(b)) in the extract-treated groups but were more frequent in the group treated with the highest concentration of *Hippocratea africana* (10 mg/mL). It was generally observed that these abnormalities increased with increasing concentrations of the root extract. A concentration-dependent and statistically significant (p<0.05) increase in total aberrant cells (aberrant cells include chromosome breaks, stickiness and polar deviation) as compared with the negative control (Table 3) was observed with the extract and the highest effects were recorded in the highest concentration (10 mg/mL) treated group showing higher frequencies of aberrations (Table 3). The genotoxic activity of the extract was further demonstrated by the induction of micronuclei in the root tip meristem cells of *A. cepa*. Micronucleus formation in 500 cells per slide (%MNC value) was not concentration-dependent as the groups treated with methotrexate and 2.5 mg/mL of *Hippocratea africana* had a higher number of cells with micronuclei in the test compared to the negative control, which was statistically significant (p<.05). The increase also occurred in the positive control. In *Allium* test, a strong toxic effect of the extract was observed and supported by the great occurrence of sticky metaphases, leading to cellular death (mitotic index decrease). In addition, cells with membrane damage, ghost cells and nucleus damage (Figure 1(c and d)) were found in various frequencies.

Table 2: Dividing and total cells counted under microscopic observations and mitotic values in control and treatment concentrations.

| Treatment group  | Concentration of extract (mg/mL) | Total Number of cells | Dividing of cells | M.I (%)± S.E |
|------------------|----------------------------------|-----------------------|-------------------|--------------|
| Negative control | Tap water                        | 500                   | 288               | 57.60±12.34  |

|                             |      |     |     |                         |
|-----------------------------|------|-----|-----|-------------------------|
| Methotrexate                | 0.1  | 500 | 15  | 3.00±0.68 <sup>a</sup>  |
| <i>Hippocratea africana</i> | 2.5  | 500 | 140 | 28.0±3.29 <sup>a</sup>  |
|                             | 5.0  | 500 | 132 | 26.40±5.23 <sup>a</sup> |
|                             | 10.0 | 500 | 90  | 18.0±1.02 <sup>a</sup>  |

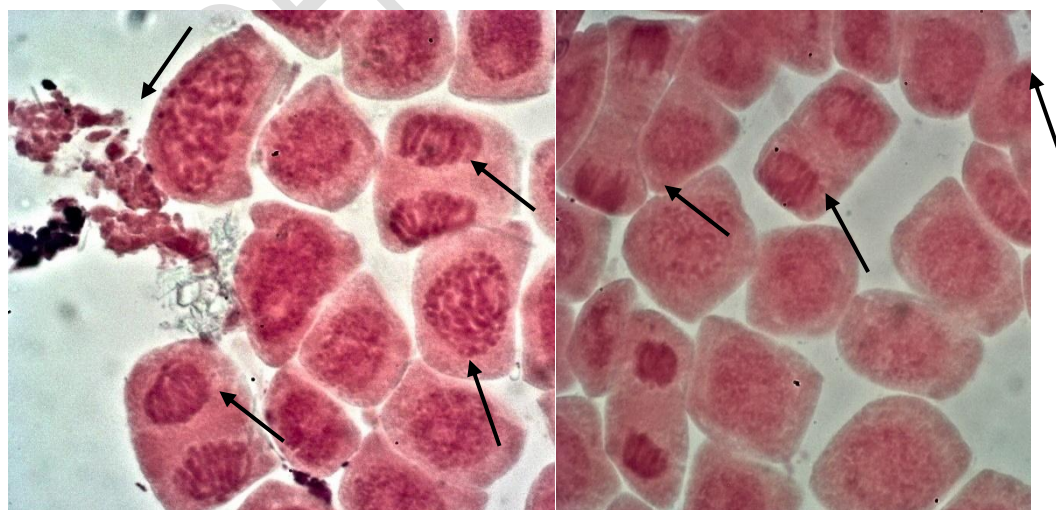
Values are expressed as mean±SEM (n=5). Significant at p<0.05 when compared to negative control.

Table3: Chromosomal and mitotic aberrations in the root meristematic cells of *Allium cepa* after treatment of extract of *Hippocratea africana*.

| Treatment group             | Concentration of extract (mg/mL) | Chromosome breaks(%) ±S.E | Stickiness (%)±S.E      | Polar deviation (%)±S.E | Aberrant cells (%)±S.E  | MNC (%)± S.E           |
|-----------------------------|----------------------------------|---------------------------|-------------------------|-------------------------|-------------------------|------------------------|
| Negative control            | Tap water                        | -                         | 0.11±0.08               | 0.31±0.04               | 1.05±0.56               | -                      |
| Methotrexate                | 0.10                             | 2.34±1.23 <sup>a</sup>    | 21.34±5.38 <sup>a</sup> | 10.55±2.28 <sup>a</sup> | 45.13±4.22 <sup>a</sup> | 2.28±0.86 <sup>a</sup> |
| <i>Hippocratea Africana</i> | 2.5                              | 2.46±0.57 <sup>a</sup>    | 24.68±3.14 <sup>a</sup> | 0.36±0.10 <sup>a</sup>  | 34.33±6.64 <sup>a</sup> | 4.12±1.29 <sup>a</sup> |
|                             | 5.0                              | 5.04±1.68 <sup>a</sup>    | 63.28±7.45 <sup>a</sup> | 6.73±1.35 <sup>a</sup>  | 68.93±7.46 <sup>a</sup> | 1.13±0.11 <sup>a</sup> |
|                             | 10.0                             | 9.34±0.91 <sup>a</sup>    | 72.64±8.65 <sup>a</sup> | 4.32±1.86 <sup>a</sup>  | 83.34±9.10 <sup>a</sup> | 2.11±0.55 <sup>a</sup> |

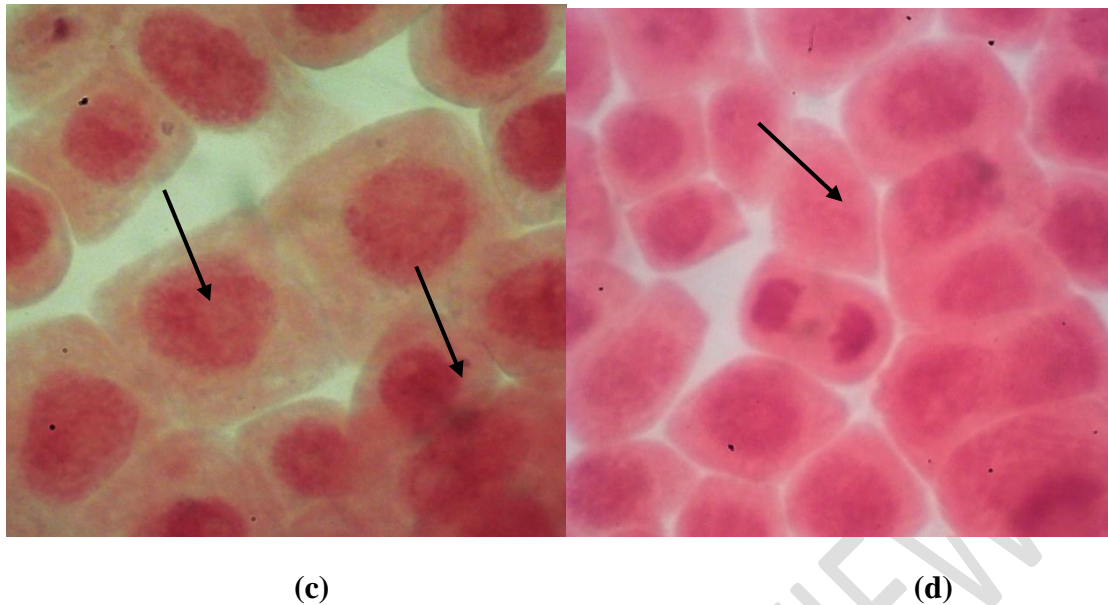
Values are expressed as mean±SEM (n=5). Significant at p<0.05 when compared to negative control.

### Light Microscopy



(a)

(b)



**Figure 1:** Photomicrography showing the mitotic and chromosomal aberrations after the *Hippocrateafricana* extract treatments in *Allium cepa* root tip meristem cells visualized with light microscopy at magnification X40. (a) visible fragments and polar deviation (b) polar deviations and stickiness at metaphase (c) micronucleus (d) ghost cells.

## Discussion

In this study, the toxic effect of *Hippocrateafricana* root extract was evaluated by analyzing root growth and root morphology of *Allium cepa*. Varying concentrations of the extract were observed to cause inhibition of root growth and these were statistically significant when compared to the control group. In addition, the extract induced colouration of the root tips *Allium cepa* depending on the concentration. This colouration ranged from light brown to dark brown colouration of the roots. Cyto- and genotoxicity were estimated by observing cytological parameters such as the mitotic index and number of chromosome abnormalities, including chromosome breaks, stickiness, and polar deviations. The mitotic index (MI) of *A. cepa* meristematic cells treated with methotrexate (3.00%) was significantly decreased when compared to the control. Significant inhibition in the onion roots treated with the *Hippocrateafricana* root extract (28.0%, 26.40% and 18.0 % compared to the negative control) was observed (Table 2). The inhibition of root growth was found to be dependent on the decrease of the Mitotic Index. The decline of mitotic index below 22% in comparison to negative control can have a lethal impact on the organism [16], while a decrease below 50% usually has sublethal effects [17] and is called cytotoxic limit value [18]. “The mitotic index measures the proportion of cells in the M-phase of the cell cycle and its inhibition could be interpreted as cellular death or a delay in the cell proliferation kinetics” [19]. “Reduction in the mitotic activity could be due to inhibition of DNA synthesis or a blocking in the G2 phase of the cell cycle, preventing the cell from entering mitosis” [20]. “Mitodepressive effects of some herbal extracts, including the ability to block the synthesis of DNA and nucleus proteins, were reported earlier” [21,22]. Several other herbal extracts have been reported to inhibit mitosis [23,24,25]. “The decreased mitotic index in *A. cepa* roots treated with *Hippocrateafricana* extract is probably due to either disturbances in the cell cycle or chromatin dysfunction

induced by extracts-DNA interactions. The results of this study suggest that the tested extract concentrations have inhibitory, mito-depressive effects on root growth and cell division of *A. cepa* and it can prevent DNA synthesis and the reduction in number of the dividing cells in roots produced by the cytotoxic effects of compounds found in the extracts. The observation of sticky metaphase reinforces the hypothesis of the toxic effect of the extracts. Metaphases with sticky chromosome lose their normal appearance, and they are seen with a sticky “surface,” causing chromosome agglomeration”[26]. “Stickiness has been attributed to the effect of pollutants and chemical compounds on the physical-chemical properties of DNA, protein or both, on the formation of complexes with phosphate groups in DNA, on DNA condensation or on the formation of inter- and intra-chromatid cross-links”[27,28]. “Chromosomal aberrations (CA) are changes in chromosome structure resulting from a break or exchange of chromosomal material. Most of the CA observed in cells are lethal, but many related aberrations are viable and that can cause genetic effects, either somatic or inherited”[29]. “The presence of chromosome fragments is an indication of chromosome breaks and can be a consequence of anaphase/telophase bridges”[30]. Fragments were observed in this study, especially in the *Hippocratea africana* root extract-treated groups. The extract used in this study was found to not only interfere with the cell cycle but also affect chromatin organization or DNA replication, causing chromosome breaks. Frequencies of total chromosome aberrations increased significantly following exposure to the extracts which indicate clastogenic activity (Table 3). “The extract significantly induced the formation of MNC in *A. cepa* root cells at 2.5–10 mg/mL concentrations. Frequencies of MNC were found to increase in the group treated with 2.5 mg/mL of *Hippocratea africana* root extract. However, MNC frequency decreased in *A. cepa* roots treated at the highest concentration of the extract (10 mg/mL), due to high cytotoxicity. The frequency of cells with micronuclei is a good indicator of the cytogenetic effects of tested chemicals. Micronuclei (MN) often result from the acentric fragments or lagging chromosomes that fail to incorporate into the daughter nuclei during telophase of the mitotic cells and can cause cellular death due to the deletion of primary genes”[31,32]. Previous studies have suggested the MNC-induced effect of various plant extracts such as *Lavandula stoechas* and *Ecballium elaterium*[33], *Azadirachta indica*[34] *Psychotria* species [25].

In this study, membrane damage cells were observed in groups treated with 5 mg/ml and 10 mg/ml of *Hippocratea africana* (10mg/mL). These results show that the extract over certain concentrations may cause cytotoxicity which was prominent as membrane damage in this study. These results further support the cytotoxicity activities reported on *Hippocratea africana* root extract[12]. “Multinucleated and binucleated cells have been observed in extract-treated groups. This is due to the prevention of cytokinesis or cell plate formation. Microtubules have been implicated in cell plate formation and extracts of the process, resulting in the inhibition of cytokinesis. A ghost cell is a dead cell in which the outline remains visible, but whose nucleus and cytoplasmic structures are not stainable”[33]. Some ghost cells were observed in various frequencies in this study, especially in both extracts but mostly in *Hippocratea africana* root extract (10 mg/ml) treated groups (Figure 2). This could have resulted from the activities of the phytochemical constituents of the extracts leading to nucleus damage and prevention of cytoplasmic structures, thus resulting in ghost cells. In addition, the extracts also induced DNA damage and cell death and/or apoptosis in various frequencies in this study. In this study, high concentrations (5 mg/ml and 10 mg/ml) of the extracts were found to cause the induction of cell death and/or apoptosis. Cell death is a basic biological process of living

organisms. Cell death is induced by high concentrations of such as toxin, stress, heavy metals, chemicals and others.

The results of this study show that the root extract of *H. africana* can induce cytogenetic alterations (cytoplasmic shrinkage, nuclear condensation, DNA fragmentation, membrane blebbing, cytoskeleton alterations and appearance of apoptotic bodies) and cell death in root tips of *A. cepa* (Figures 1(a), 1(b), 1(c), and 1(d)), suggesting cytotoxic and genotoxic activities of the extract.

Therefore, proper use of these plants in ethnomedicine is recommended and high doses should be avoided as they can cause cytotoxic and/or genotoxic effects.

## Conclusion

This study revealed that the root extract of *Hippocratea africana* possesses cytotoxic and genotoxic effects, as seen in the effects elicited by all test concentrations of the plant extract on the root number, root length, and root morphology of the *Allium cepa* meristems after exposure. The degree of chromosomal aberrations (based on increasing extract concentration), the inhibition of cellular mitotic processes, and the general abnormalities observed in all root bulbs treated with the extract further indicate cytotoxic potentials of *Hippocratea africana* root not only in experimental plant tissues but also quite possibly in animal systems as well.

## REFERENCES

1. Hutchinson J, Dalziel JM. Flora of West Tropical Africa. 2nd edition. Crown Agents for Overseas Government and Administration, 1973; 1: (2) 638.
2. Okokon J E, Ita BN, Udokpoh A.E. The *in vivo* antimalarial activities of *Uvariachamae* and *Hippocratea africana*. *Annals Trop Med Parasitol* 100:585-590.
3. Etukudo, I. *Forests: Our Divine Treasure*. Dorand Publishers, Nigeria, 2000; 156 - 180.
4. Etukudo, I. *Ethnobotany: Conventional and Traditional Uses of Plants*. The Verdict Press, Nigeria, 2003; 83 – 134.
5. Ajibesin, KK., Ekpo, BA., Bala, DN., Essien, EE., Adesanya, SA. Ethnobotanical survey of Akwalbom State of Nigeria. *Journal of Ethnopharmacology* 2008; 115: 387 – 408.
6. Okokon JE, Chinyere CP, Basse AL, Udobang JA. *In vivo* alpha amylase and alpha glucosidase activities of ethanol root extract and fractions of *Hippocratea africana*. 2021; *South Asian J Parasitol* 5(4): 42-48.
7. Okokon J. E, Antia BS, Umoh, EE. Analgesic and Anti-inflammatory effects of Ethanolic Root Extract of *Hippocratea africana*. *International Journal of Pharmacology* 2008; 4(1): 51-55.
8. Okokon JE, Antia BS, Umoh EE, Etim EI. Antidiabetic and

- hypolipidaemic activities of *Hippocratea africana*. *Int J Drug Dev Res* 2010; 2: 501 -506.
9. Okokon JE, Chinyere PC, Amaechi P, Bassey AL, Thomas PS. Antioxidant, antidiabetic and hypolipidemic activities of ethanol root extract and fractions of *Hippocratea africana*. *Tropical Journal of Natural Product Research*. 2022; 6(3):446-453.
  10. Okokon JE, Akpan HD, Ekaidem I, Umoh EE. Antiulcer and antidiarrheal activity of *Hippocratea africana*. 2011; *Pak J PharmSci* 24: 201- 205.
  11. Okokon JE, Nwafor PA, Charles U, Dar A, Choudhary MI. The antioxidative burst and hepatoprotective effects of ethanolic root extract of *Hippocratea africana* against paracetamol-induced liver injury. *Pharm Biol*. 2013a; 51 (7):872 - 880.
  12. Okokon JE, Dar A, Choudhary MI. Immunomodulatory, cytotoxic and antileishmanial activities of *Hippocratea africana*. *J Nat Pharmaceut* 2013b; 4 (2):81 – 85.
  13. Okokon JE, Davies K, Okokon PJ, Antia BS. Depressant, anticonvulsant, and antibacterial activities of *Hippocratea africana*. *International Journal of Phytotherapy*. 2014; 4 (3):144 – 153.
  14. Okokon JE, Okokon PJ, Sahal D. *In vitro* antiplasmodial activity of some medicinal plants from Nigeria. *Int J Herbal Med* 2017; 5 (5):102-109.
  15. Umoh UF, Thomas PS, Essien EE, Okokon JE, De Leo M, Ajibesin KK, Flamini G, Eseyin OA. Isolation and characterization of bioactive xanthenes from *Hippocratea africana* (Willd.) Loes. ex Engl. (Celastraceae). *Journal of Ethnopharmacol*. 2021; 280:114031.
  16. Antonsie-wiez, D. Analysis of the cell cycle in the root of *Allium cepa* under the influence of Leda krin,” *Folia Histochemica et Cytobiologica*, 1990; 26: 79–96.
  17. Panda BB. and Sahu UK. Induction of abnormal spindle function and cytokinesis inhibition in mitotic cells of *Allium cepa* by the organophosphorus insecticide fensulfothion,” *Cytobios*, 1985; 42(167-168): 147–155.
  18. Sharma CB. Plant meristems as monitors of genetic toxicity of environmental chemicals,” *Current Science*, 1983; 52: 1000–1002.
  19. Rojas E, Herrera LA, Sordo M. Mitotic index and cell proliferation kinetics for identification of antineoplastic activity,” *Anti-Cancer Drugs*, 1993; 4(6): 637–640.
  20. Sudhakar R, Ninge Gowda KN, Venu G. Mitotic abnormalities induced by silk dyeing industry effluents in the cells of *Allium cepa*,” *Cytologia*, 2001; 66(3):235–239.
  21. Mercykutty V. C. and Stephen, J. Adriamycin induced genetic toxicity as demonstrated by *Allium cepa* test,” *Cytologia*, 1980; 45(4): 769–777.
  22. Schulze E, Kirschner, M. “Microtubule dynamics in interphase cells,” *Journal of Cell Biology*, 1986; 102(3):1020–1031
  23. As T., Kinelik C, and Aslanturk, OS. “Cytotoxic and genotoxic effects of *Lavandula stoechas* aqueous extracts,” *Biologia*, 2007; 62(3): 292–296.

24. As, T., kin C, elik and Aslanturk, OS. Anti-mitotic and antigenotoxic effects of *Plantagolanceolata* aqueous extract on *Allium cepa* root tip meristem cells,” *Biologia*, 2006; 61(6): 693–697.
25. Akinboro A. and Bakare, AA. Cytotoxic and genotoxic effects of aqueous extracts of five medicinal plants,” *Journal of Ethnopharmacology*, 2007; 112(3):470–475.
26. Babich, H., Segall, MA. and Fox, KD. “The Allium test— a simple, eukaryote genotoxicity assay,” *American Biology Teacher*, 1997; 59(9): 580–583.
27. Gomurgen, AN. “Cytological effect of the potassium metabisulphite and potassium nitrate food preservative on root tips of *Allium cepa*L.,” *Cytologia*, 2005; 70(2):119– 128.
28. Turkoglu S. Genotoxicity of five food preservatives tested on root tips of *Allium cepa*L.,” *Mutation Research/Genetic Toxicology and Environmental Mutagenesis*, 2007; 626(1-2): 4–14.
29. Swierenga SH, Heddle JA, Sigal EA. Recommended protocols based on a survey of current practice in genotoxicity testing laboratories, IV. Chromosome aberration and sister-chromatid exchange in Chinese hamster ovary, V79 Chinese hamster lung and human lymphocyte cultures,” *Mutation Research*, 1991; 246(2):301–322.
30. Sharma A. and Sen, S. *Chromosome Botany*, Science, Enfield, NH, 2002; USA.
31. Albertini, R. J., Anderson, D., Douglas, G. R. IPCS guidelines for the monitoring of genotoxic effects of carcinogens in humans,” *Mutation Research*, 2000; 463(2):111–172.
32. Krishna, G. and Hayashi, M. In vivo rodent micronucleus assay: protocol, conduct and data interpretation,” *Mutation Research*, 2000; 455(1-2): 155–166.
33. As, TA., kin C, elik and Aslanturk, OS. Investigation of cytotoxic and genotoxic effects of *Ecballium elaterium* juice based on *Allium* test,” *Methods and Findings in Experimental and Clinical Pharmacology*, 2009; 31(9):591–596.
34. Soliman, MI. Genotoxicity testing of neem plant (*Azadirachta indica*A. Juss.) using the *Allium cepa* chromosome aberration assay,” *Journal of Biological Sciences*, 2001; 1(11):1021–1027.
35. Bakare, AA., Mosuro, AA., Osibanjo, O. Effect of Simulated Leachate on Chromosomes and mitosis in roots of *Allium cepa* L. *J. Environ. Biol.* 2000; 21, 263–271.