

## Original Research Article

### STUDY ON GENETIC DIVERSITY IN BLACK GRAM (*Vigna mungo* L. hepper)

#### ABSTRACT

The present study consists of 45 black gram genotypes including one check variety were evaluated at Field Experimentation Centre of the Department of Genetics and Plant Breeding, to study genetic variability, heritability, genetic advance, correlation and path coefficient for 13 quantitative characters. The experiment was conducted by using Randomized Block Design with three replications during *Kharif*, 2022. Genotype SNTP- 02 (7.44 gms), PL-416 (7.35 gms), AKU-13-15 (7.26 gms), PLU -1016 (7.22gms), KC- 153 (7.21gms) were found to be superior in seed yield per plant. High GCV AND PCV were observed in Number of primary branches, Number of clusters per plant & Number of pod per plant. Moderate PCV and GCV were observed in Number of pods per plants (43.04), Biological yield (33.77), Seed Yield per plant (30.282), Harvest index (25.4), Low PCV and GCV for Days to 50% pod setting (6.24) Divergence analysis following Mahalanobis (1936)  $D^2$  analysis has revealed presence of substantial amount of genetic diversity among the genotypes. These 45 genotypes were grouped into 6 clusters by following Tocher's method. Cluster I contain 19 genotypes, while the cluster II, III, IV, V, VI were Monogenotypic. The maximum inter cluster distance was observed between Cluster V and I (76.71) and minimum between cluster IV and II (81.02). Variance of cluster means revealed that Seed yield per plant, biological yield, harvest index had a maximum contribution towards divergence in the present material. Thus, these genotypes present in these clusters provide a broad spectrum of variability in segregation and may be used as parents in the future hybridization programme to develop desirable genotypes for grain yield improvement in Black gram genotypes.

**Keywords:** GCV, PCV, Variability, Heritability, Genetic Divergence

#### INTRODUCTION

Pulses, also known as grain legumes, are a great gift from nature and a significant addition to a diet that mostly consists of cereal. In Asia, they represent the main source of protein. They play a crucial role in Indian agriculture. They play a key role in food and are a crucial and important source of dietary protein, especially for the Indian subcontinent's largely vegetarian population. Pulses have roughly three times the amount of high-quality protein found in cereals, making them a more affordable source of protein to combat human protein deficiency. They may be used as fodder and concentrates in cattle husbandry and are especially helpful in treating protein deficiency. Pulses have unique qualities that make them particularly useful in various cropping systems.

Blackgram (*Vigna mungo* (L.) Hepper), also known as urd-bean, udand dal, or urad in India, is a short-lived, self-pollinating, diploid ( $2n=2x=22$ ), grain legume crop belonging to the family Leguminosae with a small genome size of 574Mbp (Gupta and Gopalakrishna *et al.*, 2015). It is significant from the perspective of global food and nutritional security. It is a good pulse crop because it does better in every season. The seeds are incredibly nutrient-dense, containing 24–26% protein, 60% carbohydrates, 1.5% fat, minerals, amino acids, and vitamins. Additionally, it provides a significant amount of lysine for

vegetarians and is a fair source of vitamins like thiamine, niacin, and riboflavin, as well as the essential minerals iron and phosphorus. So it is commonly referred to as "poor man's meat". Blackgram is grown as a mixed crop, cash crop, sequential crop besides growing as sole crop under residual moisture conditions, either after the harvest of rice after the harvest of other summer crops under semi irrigated and dry land condition (**Parveen et al.**, 2011). It is still cultivated on marginal lands under rainfed conditions and faces terminal drought which affects its productivity to a great extent. It is mainly grown for human consumption and also used as fodder for cattle and green manure for soil fertility.

Blackgram is consumed in the form of 'dal' (whole or split husked and un husked) or parched. It is the chief constituent of 'papad' and also of bark (special balls) which makes a delicious curry. Seeds are used in the preparation of many popular dishes. Blackgram differs from other pulses in its peculiarity of attaining some mucilaginous pasty character, when ground up with water. Blackgram has been distributed mainly in tropical to subtropical countries where it is grown in Kharif and summer season. It is utilized in various ways where seeds are consumed as source of protein, vitamins and minerals, while plant parts are used as fodder. It is cooked for consumption with roti and rice and also used in making pastes for several south Indian dishes like idly, dosa, vada etc. With a production of 2.42 million tonnes and a productivity of 615 kg ha<sup>-1</sup>, India leads the world with an area of 37.2 lakhs/ha (Directorate of Economics and Statistics, 2019-2020). It is primarily grown in Maharashtra, Andhra Pradesh, Madhya Pradesh, Uttar Pradesh, Tamil Nadu, Rajasthan, and Karnataka, among other agro-climatic zones of the nation. Blackgram is grown on 7.01 lakh hectares in Uttar Pradesh, where it produces 2.3 lakh tonnes at a productivity of 553 kg per hectare. Blackgram originated in the Indian subcontinent, claims Vavilov. It is suitable for dry land farming and is typically grown as an intercrop with other crops because it is a drought-resistant crop. In terms of area and importance, blackgram is the second-most important pulse crop in India.

The physiological expression and genetic potential of the crop are greatly influenced by the weather conditions, which have a significant impact on crop growth. It is well known that the availability of specific optimum rainfall, solar radiation, temperature, soil moisture, heat units, etc. during different stages of crop growth determines the yield from any given crop or variety. Despite the fact that this crop is more crucial from a nutritional standpoint, there hasn't been a noticeable increase in area or production between 1950–1951 and 2009–2010. To meet domestic demand, India imports about two lakh tons of pulses from other nations each year. The demand for grains and legumes is growing in tandem with the increase in global population, and agriculture. Due to the low availability of pulse grains in India (36 g/day/capita versus the minimum requirement of 80 g/day/capita) and the need to maintain the protein-to-calorie ratio in the diet, pulse production is necessary. The primary limitations of blackgram genetic diversity that can be exploited, lack of ideotypes that are appropriate for various cropping systems, a poor harvest index, susceptibility to biotic and abiotic stresses, and lack of access to high-quality seeds of improved varieties are all factors that need improvement. It is primarily the result of a few parents who have a high degree of relatedness being used repeatedly in crossing programs (**Jayamani and Sathya, 2013**). The degree and type of genetic variability present in traits that contribute to yield heavily influences the success of yield improvement (**Johnson et al., 1955**).

## **MATERIALS AND METHODS**

**3.5.1** The experimental materials for the present study was procured from Dr. G.M LAL from Department of Genetics and Plant Breeding, SHUATS during *kharif-2022*. list of genotypes, used in the present study Forty-five black gram genotypes are grown in Randomized Block Design (RBD) with three replications during *kharif-2022*. Design of Experiment is RBD in 3 replications The recommended doses of fertilizers N: P: K @ 20:40:40 kg/ha were applied. The full dose of P<sub>2</sub>O<sub>5</sub> and K<sub>2</sub>O and nitrogen were applied as basal dose at the time of sowing. The observations were recorded on plot basis for days to 50% flowering, days to physiological maturity and seed yield per plot. For rest of the characters the

data was recorded on five randomly selected plants from each genotype in each replication leaving first two border rows from all the four sides in order to avoid sampling error. **Quantitative Traits** Days to 50% flowering, Days to 50% pod setting, Days to maturity, Plant height, Number of primary branches per plant, Number of clusters per plant, Number of pod per plant, Pod length, Number of seeds per pod, Biological yield per plant, Harvest index, Seed index, seed yield per plant. Data were subjected to analysis of Mahalanobis' D<sup>2</sup>-statistics (Mahalanobis, 1936), and intra-cluster and inter-cluster distance, cluster mean and contribution of each trait to the divergence were estimated as suggested by Singh and Chaudhary (1985). Clustering of genotypes was done by using Tocher's method (Rao, 1952). The cluster distance was estimated by the formula given by Singh and Chaudhary (1977).

UNDER PEER REVIEW

**Table: 1 List of experimental material (45 blackgram germplasm)**

1	PLU-856	11	AKU-13-15	21	AZAD-1	31	SNTP-02	41	PKG-03
2	TLU-328	12	VBN-08	22	PLU-103	32	DH-85-5	42	PU-11-14
3	LBG-648	13	PL-416	23	PDU-1	33	LBG-628	43	PKRU-03
4	BGP-21-28	14	TBG-104	24	IPU-94-1	34	IPU-94-2	44	IC-106-176
5	KU-96-14	15	PLU-547	25	PLU-570	35	T9	45	SEKHAR2( check)
6	JU-2	16	IPU-99-18	26	KU-321	36	TU-99-2		
7	PLU-1016	17	DH-85-2	27	TLU-32-6	37	IPU-99-16		
8	KC-153	18	VBN-11-16	28	UH-85-2	38	AKU-14-02		
9	ADT-3	19	PLU-302	29	PLU-708	39	BG-369		
10	PLU-86-C	20	PU-31	30	LBG-623	40	IPU-99		

## RESULTS AND DISCUSSIONS

The analysis of variance revealed significant differences among all the 13 characters under study at 1% level of significance. This indicates that the presence of significantly higher amount of genetic variability among the genotypes present in the investigation for all the yield related characters studied. So, there was a sample scope for selection of promising lines from the present gene pool for yield and its components. The presence of large amount of variability might be due to diverse source of materials taken as well as environmental influence affecting the phenotype. The PCV was higher than the GCV for all the characters under study which indicated that the environmental factors influencing the characters studied. The present findings are in accordance with the findings of **Panigrahi et al. (2014)**, **Deepshikha et al. (2014)**, **Priyanka et al. (2016)** and **Gowsalya et al. (2016)**. high estimates of heritability coupled with high genetic advance as percent of mean was observed for number of cluster per plant (98.301% and 105.841%), number of primary branches (98.01.% and 113.665%), number of pods per plant (97.423% and 86.365%), biological yield (95.837% and 66.687%), seed yield per plant (93.37% and 58.287%), plant height (94.93%, 356.517%), respectively suggesting that there was preponderance of additive gene action governing the inheritance of this character and offers the best possibility of improvement through simple selection. The findings are in agreement with the results of Aftab *et al.* (2018), Kuralarasan *et al.* (2017), Gowsalya *et al.* (2016) and Singh *et al.* (2014). Genetic divergence in 45 genotypes of black gram was measured by following Mahalanobis's  $D^2$  statistic. The diversity available in the crop decides the success of any crop improvement programme with manifested objectives. Assessment of divergence in the germplasm is pre-requisite to know the spectrum of diversity. Clustering of genotypes following the Tocher's method as described by Rao (1952) led to formation of SIX clusters. In the present investigation, 0 genotypes of BLACK GRAM were studied for their genetic diversity by multivariate analysis as per Mahalanobis  $D^2$  statistic (1936) with respect to eleven important quantitative characters. Tocher's method (Rao, 1952) was used for grouping of genotypes using the pairs of combinations of  $D^2$  values. 40 genotypes were grouped in to six clusters . Cluster I was biggest and consisted of 35 genotypes. All remaining clusters *viz.* cluster II, III, IV, V and VI were solitary, with one genotype in each of these clusters.

### Intra and Inter Cluster Distances

Intra and inter cluster distance values have been presented in Table 1. Intra cluster distance was ranged from zero (cluster IV and VI) to 761.71 (cluster I). The highest intra cluster distance was recorded in cluster I (761.71) followed by cluster IV. The high intra cluster distance values

revealed the presence of genetic diversity between the genotypes grouped together in those clusters. Hence, there is a lot of scope for exchange of genes among genotypes within these clusters.

From the inter cluster distance values of the six clusters, the highest divergence occurred between cluster III and V (441.63) subsequently between cluster I and IV (465.11), cluster III and IV (177.82), cluster I and VI (221.34), cluster I and III(392.43), cluster I and III (135.97). Suggesting that the crosses involving genotypes from these clusters would give desirable recombination. From the closest inter cluster distance it was concluded that these genotypes were not very distant but couldn't be grouped together based on studied traits. Several authors have suggested that the crossing between the genotypes of clusters with high inter cluster would yield good segregants for selection. Panigrahi *et al.* (2020) The intercluster distance were greater than the intra cluster distance revealing that considerable amount of genetic diversity existed among the accession. The intra cluster distance ranged from 0.00 to 7.65 and the inter cluster distance ranged from 3.10 to 15.07, indicating that the selected genotypes were highly divergent. Minimum intra cluster distance had been recorded with cluster XII (0.00) due to the presence of solitary accession followed by cluster I (2.32) and cluster III (2.74). The data revealed that considerable differences existed among the clusters for most of the characters. The cluster IV showed the highest mean values for five characters *viz.* Days to 50% flowering, Days to 50% pod setting Days to maturity Plant height, Number of primary branches, Number of clusters per plant, Number of pods per plant. The cluster I exhibited lowest mean for Pod Length, Number of seeds per pod, Seed index, Harvest index, Biological yield, Seed yield per plant from the results, it was noticed that cluster VI (SNTP - 02) performed better means in Harvest index, Biological yield, Seed yield per plant but no cluster contained at least one genotype with all desirable characters, which eliminated the possibility of directly selecting one genotype for immediate use. Therefore, hybridization programme between the selected genotypes from diverse clusters is essential to combine all the targeted traits to improve phenotypic performance. Per cent Contribution of Various Characters towards Divergence. The per cent contribution of thirteen characters studied towards total divergence has been presented in Table 1. Data revealed that, seed yield per plant had contributed highest (21.00%) for genetic divergence and subsequently by biological yield (14.54%), harvest index (10.21 %), number of pod per plant (9.81%), number of clusters (8.46%), plant height (6.53%), Days to maturity (4.00%).

## CONCLUSION

From the present research, it is concluded that Analysis of Variance showed significant variation to all the characters. among 45 genotypes, SNTP-02(7.44) and PL -416 (7.353), genotypes were found to be superior for grain yield per hill over the check (SEKHAR – 2). High to moderate estimates of GCV, PCV, high heritability coupled with high genetic advance as percent mean were recorded for Number of cluster per plant, number of pod per plant, number of primary branches indicating predominance of additive gene effects and possibilities of effective selection for the improvement of the characters. Cluster V and I (761.71), cluster IV and I (465.1) had high inter cluster distances, were most diverse from each other and hybridization between genotypes present in these clusters provide a broad spectrum of variability in segregation these genotypes may be used as parents in the future hybridization programme to develop desirable genotypes for seed yield Improvement in black gram.

**Table 2 Analysis of Variance for 13 quantitative characters of 45 black gram genotypes**

<b>Sr. No.</b>	<b>Source</b>	<b>Replication</b>	<b>Treatment</b>	<b>Error</b>
	<b>Degrees of freedom</b>	<b>2</b>	<b>44</b>	<b>88</b>
1	<b>Days to 50% flowering</b>	3.8220	20.885**	7.686
2	<b>Days to 50% pod setting</b>	7.2670	16.248**	8.721
3	<b>Days to maturity</b>	4.4220	169.1**	20.127
4	<b>Plant height (cm)</b>	1.2520	637.413**	11.149
5	<b>Number of primary branches</b>	0.7360	55.615**	0.374
6	<b>Number of clusters per plant</b>	0.6130	46.649**	0.267
7	<b>Number of pods per plant</b>	0.3440	170.663**	1.492
8	<b>Pod Length (cm)</b>	0.0990	0.178**	0.08
9	<b>Number of seeds per pod</b>	0.0020	1.393**	0.163
10	<b>Seed index (g)</b>	0.0010	0.956**	0.06
11	<b>Harvest index (%)</b>	1.3790	165.028**	11.747
12	<b>Biological yield (g)</b>	0.5860	114.962**	1.641
13	<b>Seed yield per plant (g)</b>	0.090	8.099**	0.187

**Table 3 Mean performance of 45 Blackgram genotypes for 13 quantitative parameters during *Kharif* -2022.**

Sl. No.	Genotypes	Days to 50% flowering	Days to 50% pod setting	Days to maturity	Plant height (cm)	Number of primary branches	Number of clusters per plant	Number of pods per plant	Pod Length (cm)	Number of seeds per pod	Seed index (g)	Harvest index (%)	Biological yield (g)	Seed yield per plant (g)
1	PLU – 856	43	49	59.667	61.733	12.333	12.33	25.333	4.047	6	4.6	26.167	23.363	6.113
2	TLU – 328	42	53	65	56.42	11.267	7.8	17.4	4.04	6.133	4.1	28.133	23.027	6.473
3	LBG – 648	47.333	54	62	60.133	8.067	3.533	8.197	4.107	5.6	5.097	28.053	23.193	6.5
4	BGP - 21- 28	46	51	62.667	46.81	11.4	13.867	32.333	4.273	6.467	3.5	31.35	22.88	7.17
5	KU – 96- 14	46.333	52.667	63.333	61.533	15.467	13.337	41.933	4.347	5.6	5.2	31.023	21.19	6.573
6	JU - 2	45	54	65.667	62.693	12.537	9.933	20.867	4.06	6.133	4.3	28.44	24.43	6.947
7	PLU - 1016	46.333	54	59.667	81.333	12.533	11.4	12.933	3.687	5.733	5.4	26.82	26.92	7.22
8	KC – 153	43	54	63.667	55.797	14.003	16.067	25	4.293	6.533	4.797	30.99	23.28	7.213
9	ADT – 3	48	53.667	64.333	68.137	15.267	16	24.2	3.97	5.8	4.5	28.443	24.967	7.077
10	PLU – 86 - C	44	50	61.667	57.447	10.867	12	20.667	4.273	6.467	4.9	28.83	23.833	6.873
11	AKU – 13- 15	47.667	52.667	64.333	65.597	12.537	12	24.6	3.82	6	4.297	29.88	24.893	7.26
12	VBN -08	43.333	54.333	75	31.437	3.933	3.863	12.533	4.04	4.7	3.583	26.617	13.127	3.46
13	PL – 416	48	53.333	64.667	66.2	13.003	11.933	34.2	4.22	6	4.703	29.787	24.69	7.353
14	TBG – 104	41	54	81.333	35.22	3.6	3.667	10.6	3.62	4.267	3.923	20.4	14.633	2.973
15	PLU – 547	43	48.667	63	72.463	12.533	11.6	16.4	4.213	6.133	4.3	27.807	26.33	7.313
16	IPU – 99 – 18	43.667	55.667	77.333	37.2	4.367	4.733	14.467	3.577	5.503	4.037	18.043	17.593	3.163
17	DH – 85 - 2	47.667	52.333	61	83.07	9.467	12.133	22.067	4.013	6.133	4.603	27.513	26.74	7.357
18	VBN – 11- 16	44.667	56	77	35.03	3.8	3.967	11.6	3.703	5.433	3.847	30.257	10.433	3.16
19	PLU – 302	48.333	52.333	61	59.737	8.067	5.333	13.13	4.293	5.6	3.9	26.937	21.707	5.847
20	PU - 31	45	56.667	75.333	35.513	3.4	3.667	11.6	4.053	4.5	3.96	54.34	8.4	4.577

Sl. No.	Genotypes	Days to 50% flowering	Days to 50% pod setting	Days to maturity	Plant height (cm)	Number of primary branches	Number of clusters per plant	Number of pods per plant	Pod Length (cm)	Number of seeds per pod	Seed index (g)	Harvest index (%)	Biological yield (g)	Seed yield per plant (g)
21	AZAD - 1	44.667	50.333	61.667	65.8	7.467	5.867	13.13	3.77	5.933	3.703	24.487	24.1	5.907
22	PLU – 103	41	54.333	76.333	40.473	3.267	4.133	20.47	4.017	6.067	3.893	49.123	12.567	6.157
23	PDU – 1	48.333	53.667	65.667	62.533	12.6	11.203	33.4	3.993	6.133	4.3	30.677	23.973	7.353
24	IPU – 94 – 1	45.667	57.667	77.667	38.803	2.967	4.567	13.433	3.573	4.467	3.917	38.97	9.64	3.757
25	PLU – 570	49.333	55.667	68	64.8	7.6	7.133	15.6	4.283	6	4.897	27.063	24.603	6.613
26	KU – 321	43.667	54.333	80	36.58	3.333	3.667	9.4	4.04	4.5	3.773	31.41	8.72	2.74
27	TLU – 32 – 6	47.667	54	65	34.8	9.467	8.733	15.4	4.18	6	5.1	34.64	18.457	6.39
28	UH – 85 – 2	47	59	82	34.563	2.767	4.667	11.667	3.763	5.5	3.747	49.437	7.7	3.773
29	PLU – 708	46.333	52.333	69.333	74.803	12.467	9.267	15.533	3.897	5.867	3.7	23.96	27.02	6.473
30	LBG – 623	44	54	78	37.477	3.433	4.367	14.4	3.56	5.533	3.747	26.61	10.367	2.753
31	SNTP – 02	40	50	62	50.86	4.733	10.133	25.2	4.033	6.2	6.1	37.313	19.94	7.44
32	DH – 85 – 2	45.333	57.333	76.667	41.783	4.063	6.6	20.43	4.267	6.267	3.843	37.24	17.593	6.537
33	LBG – 628	41	52	63	56.273	9.333	10.533	17.6	4.12	6	4.897	31.163	21.17	6.597
34	IPU – 94 – 2	38.667	53.333	80	39.243	3.967	4.4	12.467	4	5.467	3.847	34.337	14.633	5.03
35	T9	45	52	67	67.513	8.867	9.867	19.6	3.953	6.267	3.9	26.743	24.92	6.66
36	TU – 99 – 2	42.667	55.333	80	40.69	3.397	3.267	11.467	3.71	4.467	3.947	46.953	9.42	4.403
37	IPU – 99 – 16	44	51	67	59.133	11.73	10.933	21.933	4.113	6.133	4.097	32.56	20.71	6.743

Sl. No.	Genotypes	Days to 50% flowering	Days to 50% pod setting	Days to maturity	Plant height (cm)	Number of primary branches	Number of clusters per plant	Number of pods per plant	Pod Length (cm)	Number of seeds per pod	Seed index (g)	Harvest index (%)	Biological yield (g)	Seed yield per plant (g)
38	AKU – 14 – 02	44.667	56	82	39.09	3.767	2.9	10.4	3.767	5.5	3.87	37.74	8.667	3.22
39	BG – 369	42	53	64	61.413	13.533	7.13	23.733	4.17	6.4	4.497	33.89	20.79	7.047
40	IPU – 99	40.667	53.667	77	37.217	3.53	3.437	9.4	3.607	4.533	3.94	21.99	12.567	2.753
41	PKG V – 03	41	52.333	78	36.517	2.73	4.3	12.467	3.82	4.563	3.843	33.527	10.627	3.533
42	PU – 11 – 14	41.667	55.667	76	40.843	3.3	5.367	10.537	4.173	4.433	3.877	34.037	15.417	4.747
43	PKRU – 03	41.667	53.667	73.333	35.467	2.867	2.933	11.633	3.8	4.467	3.763	28.07	13.63	3.823
44	IC – 106 – 176	47	59	77.667	38.2	3.033	3.433	12.5	3.543	4.87	3.783	25.707	14.633	3.76
45	SEKHAR – 2 (CHECK)	42.667	53	78	40.593	3.8	3.933	13.7	4.413	5.57	3.913	25.057	18.883	4.737
	Mean	44.42	53.64	70.07	51.31	7.7	7.6	17.68	3.98	5.6	4.23	31.17	18.59	5.55
	CV	6.24	5.51	6.4	6.51	7.94	6.8	6.91	7.11	7.21	5.8	11	6.89	7.8
	SEm	1.6	1.71	2.59	1.93	0.35	0.3	0.71	0.16	0.23	0.14	1.98	0.74	0.25
	CD at 5%	4.5	4.79	7.28	5.42	0.99	0.84	1.98	0.46	0.65	0.4	5.56	2.08	0.7
	CD at 1%	5.96	6.35	9.64	7.18	1.31	1.11	2.63	0.61	0.87	0.53	7.37	2.75	0.93
	Minimum	38.67	48.67	59.67	31.44	2.73	2.9	8.2	3.54	4.27	3.5	18.04	7.7	2.74
	Maximum	49.33	59	82	83.07	15.47	16.07	41.93	4.41	6.53	6.1	54.34	27.02	7.44

**Table 4 Estimation of variability and genetic parameters for 13 quantitative characters in black gram germplasm for *kharif*,2022**

Traits	GCV	PCV	$h^2$ (Broad Sense)	Genetic Advance 5%	Genetic Advance as % of(Mean5%)
<b>Days to 50% flowering</b>	4.722	7.826	36.404	2.607	5.869
<b>Days to 50% pod setting</b>	2.953	6.247	22.342	1.542	2.875
<b>Days to maturity</b>	10.057	11.923	71.159	12.245	17.477
<b>Plant height (cm)</b>	28.159	28.901	94.93	28.999	56.517
<b>Number of primary branches</b>	55.735	56.298	98.01	8.751	113.665
<b>Number of clusters per plant</b>	51.747	52.192	98.301	8.031	105.689
<b>Number of pods per plant</b>	42.476	43.034	97.423	15.269	86.365
<b>Pod Length (cm)</b>	4.521	8.43	28.76	0.199	4.994
<b>Number of seeds per pod</b>	11.442	13.523	71.591	1.116	19.944
<b>Seed index (g)</b>	12.91	14.155	83.189	1.027	24.257
<b>Harvest index (%)</b>	22.934	25.434	81.307	13.277	42.601
<b>Biological yield (g)</b>	33.068	33.778	95.837	12.395	66.687
<b>Seed yield per plant (g)</b>	29.282	30.304	93.37	3.233	58.287

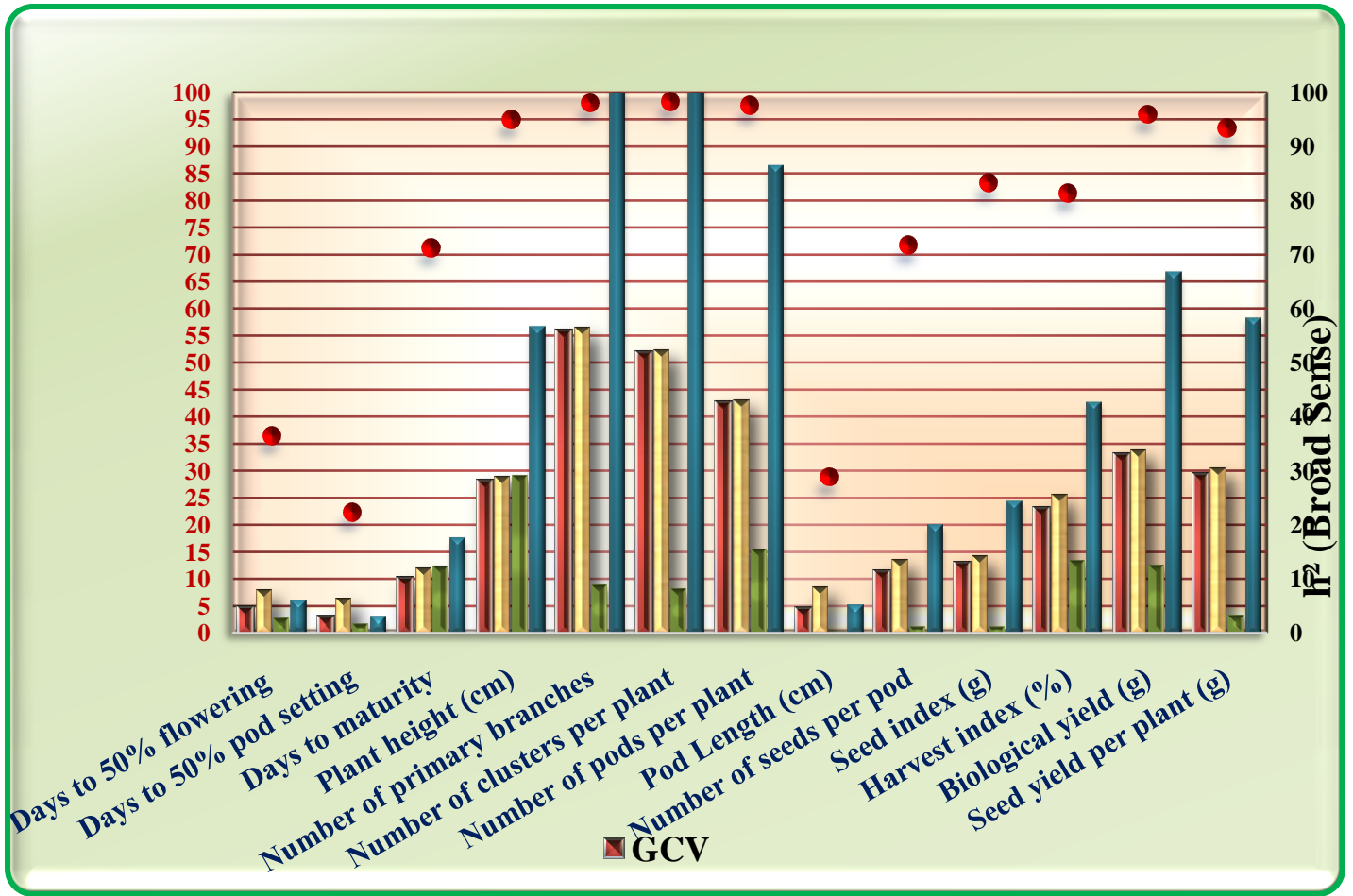
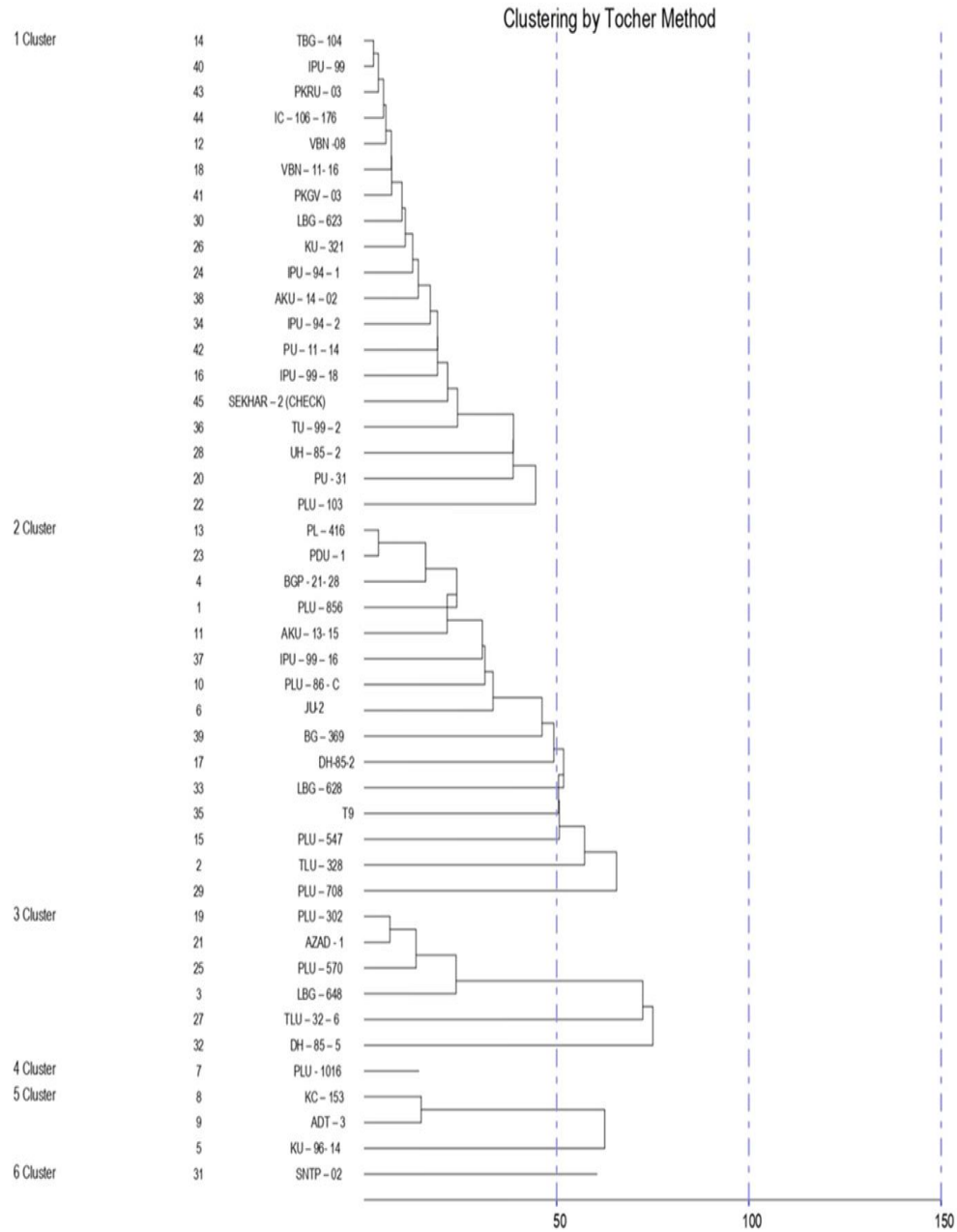


Fig.1. Histogram depicting GCV, PCV, Genetic advance and  $h^2$  for quantitative characters of black gram genotype.

**Table 5: Grouping of 45 blackgram genotypes based on D<sup>2</sup> values**

<b>Cluster Group</b>	<b>No. of genotype</b>	<b>List of genotypes</b>
<b>1 Cluster</b>	<b>19</b>	<b>TBG - 104, IPU - 99, PKRU - 03, IC - 106 - 176, VBN -08, VBN - 11- 16, PKGV - 03, LBG - 623, KU - 321, IPU - 94 - 1, AKU - 14 - 02, IPU - 94 - 2, PU - 11 - 14, IPU - 99 - 18, SEKHAR - 2 (CHECK), TU - 99 - 2, UH - 85 - 2, PU - 31 &amp;PLU - 103</b>
<b>2 Cluster</b>	<b>15</b>	<b>PL - 416, PDU - 1, BGP - 21- 28, PLU - 856, AKU - 13- 15, IPU - 99 - 16, PLU - 86 -C, JU - 2, BG - 369, DH - 85 - 2, LBG - 628, T9, PLU- 547, TLU- 328 &amp; PLU- 708</b>
<b>3 Cluster</b>	<b>6</b>	<b>PLU- 302, AZAD - 1, PLU - 570, LBG - 648, TLU - 32 - 6 &amp; DH - 85 - 5</b>
<b>4 Cluster</b>	<b>1</b>	<b>PLU- 1016</b>
<b>5 Cluster</b>	<b>3</b>	<b>KC - 153, ADT - 3 &amp; KU - 96- 14</b>
<b>6 Cluster</b>	<b>1</b>	<b>SNTP - 02</b>



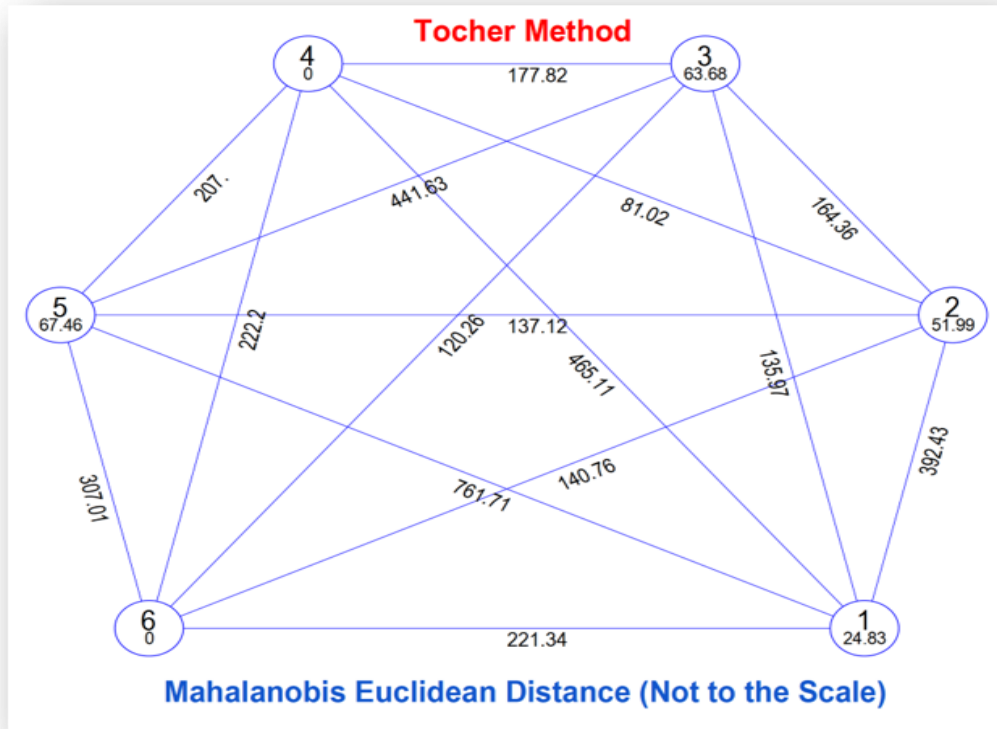
**Fig. 2: Dendrogram depicting clustering of blackgram genotypes into 6 clusters**

**Table 6: Average intra and inter cluster distance ( $D^2$ ) values for six clusters in 45 black gram genotypes**

Cluster Distances						
	Cluster 1	Cluster 2	Cluster 3	Cluster 4	Cluster 5	Cluster 6
Cluster 1	24.83	392.43	135.97	465.11	761.71	221.34
Cluster 2		51.99	164.36	81.02	137.12	140.76
Cluster 3			63.68	177.82	441.63	120.26
Cluster 4				0.00	207.00	222.20
Cluster 5					67.46	307.01
Cluster 6						0.00

**Table 7: Mean values of the Six clusters for 13 characters in black gram genotypes**

Cluster Means: Tocher Method													
	Days to 50% flowering	Days to 50% pod setting	Days to maturity	Plant height	Number of primary branches	Number of clusters per plant	Number of pods per plant	Pod Length	Number of seeds per pod	Seed index	Harvest index	Biological yield	Seed yield per plant
Cluster 1	43.14	55.16	78.00	37.38	3.43	3.96	12.35	3.83	4.97	3.85	33.30	12.19	3.82
Cluster 2	44.87	51.87	64.24	63.61	11.63	10.84	23.04	4.08	6.15	4.31	29.13	23.92	6.92
Cluster 3	47.11	53.94	65.72	54.51	7.45	6.20	14.31	4.15	5.90	4.42	29.74	21.61	6.30
Cluster 4	46.33	54.00	59.67	81.33	12.53	11.40	12.93	3.69	5.73	5.40	26.82	26.92	7.22
Cluster 5	45.78	53.44	63.78	61.82	14.91	15.13	30.38	4.20	5.98	4.83	30.15	23.15	6.95
Cluster 6	40.00	50.00	62.00	50.86	4.73	10.13	25.20	4.03	6.20	6.10	37.31	19.94	7.44



**Fig. 3: Cluster diagram depicting intra and inter-cluster distances. (The figure is not exactly to the scale)**

**Table 8: Per cent contribution towards divergence of 13 different characters of blackgram genotypes**

Sl.No.	Source	Contribution %	Times ranked 1st
1	Days to 50% flowering	0.30	3
2	Days to 50% pod setting	4.92	49
3	Days to maturity	4.00	40
4	Plant height	6.53	65

5	Number of primary branches	5.76	57
6	Number of clusters per plant	8.45	84
7	Number of pods per plant	9.81	97
8	Pod length	2.30	23
9	Number of seeds per pod	6.54	65
10	Seed index	5.64	56
11	Harvest index	10.21	101
12	Biological yield	14.54	144
13	Seed yield per plant	21.00	208

## References

- Bharti, B., Kumar, R., Bind, H. N., Kumar, A. and Sharma, V. (2013).** Correlation and path analysis for yield and yield components in blackgram [*Vigna mungo* (L.) Hepper]. *Progressive Research, 8(Special) : 473-476.*
- Burton GW (1952).** Quantitative inheritance of grasses. In: Proceedings 6th International Grassland Congress **1: 273-283.**
- Falconer, D. S. (1960).** Introduction to quantitative genetics: Oliver And Boyd; Edinburgh; London.
- Fisher, R. A. (1918).** The correlation between relatives on the sup- position of mendelian inheritance. *Transactions of the Royal Society of Edinburgh, 53: 399–433.*
- Gowsalya, P., Kumaresan, D., Packiaraj D. and J.R. KannanBapu, J. R. (2016).** Genetic variability and character association for biometrical traits in blackgram (*Vigna mungo* (L.) Hepper). *Electronic Journal of Plant Breeding, 7(2): 317-324.*
- Gupta, S. and Gopalakrishna, T. (2009).** Molecular markers and their application in grain legumes breeding. *Journal of Food Legumes, 21: 1-14.*

- Hanson, C. H., Robinson, H. F. and Comstock, R. E. (1956).** Biometrical studies on yield in segregating population of Korean lespedeza. *Agronomy Journal*, **48**: 268-272.
- Harish, K. T. and Sharma, P. P. (2019).** Correlation and path coefficient analysis in blackgram [Vigna mungo (L.) Hepper]. *Electronic Journal of Plant Breeding*, **10**(3): 1333-1338.
- Hemalatha, K., Sapna, L.S. and Gabril, M. L. (2017).** Study on genetic variability and correlation in blackgram (Vigna mungo (L.) Hepper). *Journal of Pharmacognosy and Phytochemistry*, **6**(4): 674-676
- Jayamani, P. and Sathya, M. (2013).** Genetic diversity in pod characters in blackgram. *Legume Research*, **36**(3): 220-223.
- Johnson, H. W. and Bernard, R. L. (1955).** Soybean genetics and breeding. *Advances in Agronomy*, **14**: 149-221.
- Jyothsna, S., Patro, T. S. S. K., Ashok, S., Rani, Y. S. and Neeraja, B. (2016).** Character association and Path analysis of Seed Yield and its Yield Components in Blackgram (Vigna mungo (L.) Hepper). *International Journal of Theoretical & Applied Sciences*, **8**(1): 12-16.
- Kachave G. A., Parde N. S., Zate D. K. and Harer P. N. (2015).** Analysis of combining ability in Blackgram (Vigna mungo (L.) Hepper). *International Journal of Advanced Research*, **3**: 1139-1146.
- Konda, C. R. Salimath, P. M. and Mishra, M. N. (2009).** Genetic variability studies for productivity and its components in Blackgram [Vigna munga (L.) Hepper]. *Legume Research*, **32**(1): 54-58.
- Kumar, B. S., Padmavathi, S., Prakash, M. and Ganesan, J. (2003).** Correlation and path analysis in black gram [Vigna mungo (L.) Hepper]. *Legume Research*, **26**(1): 75-76.
- Kumar, S., Singh, P., Kumar, R. and Singh, R. (2014).** Evaluation of genetic divergence and heritability in urdbean [Vigna mungo (L.) Hepper]. *Legume Research*, **37**(5): 473-478.
- Kuralarasan, V., Vanniarajan, C., Kanchana1, S., Veni1, K. and Lavanya, S. A. (2018).** Genetic divergence, heritability and genetic advance in mutant lines of urdbean [Vigna mungo (L.) Hepper]. *Legume Research*, **41**(6): 833-836.
- Lush, J. L. (1949).** Heritability of quantitative characters in farm animals. *Herbicides*, **35**: 356-357.
- Mahalanobis, P. C. (1936).** On the Generalized distance in statistics. In: Proceedings of National

- Mathivathana, M. K., Shunmugavalli, N., Muthuswamy, A. and Harris, C. V. (2015).** Correlation and path analysis in black gram. *Agricultural Science Digest*, **35**(2): 158-160.
- Mehra, R., Tikle, A. N., Saxena, A., Munjal, A., Khandia, R. and Singh, M. (2016).** Correlation, path- coefficient and genetic diversity In Blackgram (*Vigna mungo* (L.) Hepper). *International Research Journal of Plant Science*, **7**(1): 001-011.
- Matin, Md. Q.I., Rasul, Md. G., Islam, A. K. M. A., Mian, M.A.K., Ivy, N. A. and Ahmed, J. U. (2017).** Study of Genetic Diversity in Maize (*Zea mays* L.) Inbreds. *Journal of Plant*, **5**(2): 31-35.
- Mengistu, S. (2021).** Maize germplasm characterization using principal component and cluster analysis. *Asian Journal of Plant Science and Research*, **11**(6): 199-204.
- Mohanlal, V. A., Saravanan, K. and Sabesan, T. (2018).** Studies on genetic correlation and path coefficient analysis of blackgram (*Vigna mungo* [L.] Hepper) **genotypes under salinity**. *Journal of Phytology*, **10**: 09-11.
- Naraini, T. K. (1960).** Yellow mosaic of mung (*Phaseolus aureus*). *Indian Phytopathology*, **13**: 24-29.
- Nene Y. L. (1972).** A survey of viral diseases of pulse crops in Uttar Pradesh. G. B. Pant University Agriculture Technology Pantnagar Research Bulletin, **4**, 191, 88.
- Panigrahi, K. K., Mohanty, A. and Baisakh, B. (2014).** Genetic divergence, variability and character association in landraces of blackgram (*Vigna Mungo* [L.] Hepper) from Odisha. *Journal of Crop and Weed*, **10**(2): 155-165.
- Panses V. G and Sukhatme, P.V. (1961).** Statistical methods for agricultural workers. 2nd Ed. ICAR., New Delhi. India, pp: 381.
- Parveen, S., Sekhar, M. R., Reddy, D. M. and Sudhakar. P. (2011).** Correlation and path coefficient analysis for yield and yield Components in blackgram (*Vigna mungo* (L.) Hepper). *International Journal of Applied Biology and Pharmaceutical Technology*, **2**: 616-623.
- Pohelman J. M. (1995).** The mungbean Oxford and IBH publishing Co. Pvt. Ltd., New Delhi, 1-375.
- Priya, L., Pillai, M. A., Shoba, D. (2021).** Genetic divergence, variability and correlation studies in black gram [*Vigna mungo* (L.) Hepper]. *Legume Research*, **4065**: 36-40.

- Priya, L., Pillai, M. A., Shoba, D., Kumari, S. M. P. and Aananthi, N. (2018).** Genetic variability and correlation studies in blackgram [Vigna mungo (L.) Hepper]. *Electronic Journal of Plant Breeding*, **9**(4): 1583-1587.
- Priyanka, S., Rangaiah, S. and Babu B. M. S. (2016).** Genetic variability estimates of quantitative and qualitative traits in blackgram. *International Journal of Agriculture Sciences*, **8**(40): 1821-1824.
- Punia, S. S., Gautam, N. K., Ram, B., Verma, P., Dheer, M., Jain, N. K., Koli, N. R., Mahavar, R. and Jat, V. S. (2014).** Genetic variability and correlation studies in urdbean (Vigna mungo L.). *Legume Research*, **37**(6): 580-584.
- Ragul, S., Manivannan, N., Iyanar, K., Ganapathy, N., Karthikeyan, G. (2021).** Estimation of genetic parameters and gene action among crosses of blackgram (Vigna mungo (L.) Hepper) for seed yield and its component traits. *Electronic Journal of Plant Breeding*, **12**(4): 1244-1248.
- Ragul, S., Manivannan, N., Mahalingam, A. (2021).** Assessment of variability and association for seed yield and yield attributing traits among the interspecific derivatives of greengram x blackgram cross. *Journal of Applied and Natural Science*, **13**(SI): 1-8.
- Ragul, S., Manivannan, N., Mahalingam, A., Satya, V. K. and Thangaraj, K. (2018).** Association analysis for seed yield and component traits in interspecific derivatives of greengram and blackgram. *Electronic Journal of Plant Breeding*, **9**(2): 763-767.
- Raman, R. B., Nandan, M., Sudipta Patra, S. and Sahu, N. C. (2019).** Screening of some blackgram (Vigna mungo (L.) Hepper) genotypes for resistance to yellow mosaic virus during summer season. *Electronic Journal of Plant Breeding*, **10**(3): 1329 – 1332.
- Rao, C. M., Rao, Y. K., Reddy M. (2006).** Genetic variability and path analysis in mungbean. *Legume Research*, **29**: 216- 208.
- Reddy, D. K., Venkateswarlu, O., Jyothi, G. L. S. and Obaiah, M. C. (2012).** Genetic parameters and inter-relationship analysis in blackgram (Vigna mungo (L.) Hepper). *Legume research* **34**:149-152
- Roopalakshmi, K., Kajjidoni, S. T. and Salimath, S. M. (2003).** Effect of irradiation and matting schemes on native of association of seed yield and its components in blackgram. *Legume Research*, **26**(4): 288-291.
- Samad, M. A., Sarker, N., Sarker, J. K., Azad, A. K., Deb, A. C. (2013).** Assessment of

- variability in twenty-four lines of blackgram (*Vigna mungo* (L.)). *International Journal of Biosciences*, **3**(8): 307-312.
- Saran, R., Sharma, P. P., Choudhary, M., and Dalip (2021).** Evaluation of genetic parameters in black gram [*Vigna mungo* (L.) Hepper] for seed yield and its related traits. *The Pharma Innovation*, **10**(7): 364-366.
- Sathya, P., Manivannan, N., Viswanathan, P. L., Ganapathy, N. and Karthikeyan, G. (2021).** Genetic Variability, Association and Path Coefficient Analyses in Segregating Populations of Blackgram (*Vigna mungo* (L.) Hepper). *Madras Agricultural Journal*, **107**(10-12): 1-6.
- Senthamizhselvi, S., Muthuswamy, A. and Shunmugavalli, N. (2019).** Genetic variability, correlation and path coefficient analysis for yield and yield components in blackgram (*Vigna mungo* (L.) Hepper). *Electronic Journal of Plant Breeding*, **10**(4): 1600-1605.
- Shalini, Ch. and Lal, G. M. (2019).** Correlation and path coefficient analysis for yield and yield components in blackgram (*Vigna mungo* (L.) Hepper). *The Pharma Innovation Journal*, **8**(6): 65-68.
- Shanthi, P., Ganesan, K. N., Manivannan, N. and C. Natarajan, C. (2019).** Correlation and path analysis in Blackgram (*Vigna mungo* (L.)). *Electronic Journal of Plant Breeding*, **10**(3): 1218 – 1222.
- Shivade, H. A., Rewale, A. P. and Patil, S. B. (2011).** Correlation and Path analysis for yield and yield components in blackgram [*Vigna mungo* (L.) Hepper]. *Legume Research*, **34**: 178-183.
- Singh, K. A., Gautam, R. K., Singh, P. K., Kumar, K., Kumar, N., Swain, S. and Dam, R. S. (2014).** Estimation of genetic variability and association analysis in the indigenous landraces of Urdbean (*Vigna mungo* (L.) Hepper) of Andaman islands. *Vegetos*, **27**(1) : 113-122.
- Sowmini, K and Jayamani. P. (2013).** Genetic variability studies for yield and its component traits in RIL population of blackgram (*Vigna mungo* (L.) Hepper). *Electronic Journal of Plant Breeding*, **4**(1): 1050- 1055.
- Sravani, P., Kumar, P., Raju, K. K. and Raghu, G. (2021).** Studies on inter-relationship and cause effect for yield and its attributes of Black gram (*Vigna mungo* (L.) Hepper) genotypes. *The Pharma Innovation*, **10**(10): 983-986.
- Suman, S., Sharma, V. K., HarshKumar, Shahi, V. K. (2015).** Screening of Mungbean [*Vigna*

- radiata (L.) Wilczek] Genotypes for Resistance to Mungbean Yellow Mosaic Virus (MYMV). *Environment and Ecology*, **33**(2A): 855 - 859.
- Tabasum, A., Saleem, M. and Azi, I. (2010).** Genetic variability, trait association and path analysis of yield and yield components in mungbean (*Vigna radiata* (L.) wilczek). *Pakistan Journal of Botany*, **42**(6): 3915-3924.
- Tamilzharasi, M., Vanniarajan, C., Karthikeyan, A., Souframanien, J., Pillai, M. A. and Meenakshisundram, P. (2018).** Evaluation of urdbean (*Vigna mungo*) genotypes for mungbean yellow mosaic virus resistance through phenotypic reaction and genotypic analysis. *Legume Research*, **40****35**: 1-7.
- Teja, K. V., Lal, G. M. (2021).** Study of genetic variability and character association for yield and yield related traits in f3 generation of blackgram (*Vigna mungo* (L.) Hepper). *International Journal of Environment, Agriculture and Technology*, **6**(3): 24-36.
- Thamodharan, G., Ramalingam, A. and Geetha, S. (2015).** Estimation of genetic parameters and combining ability analysis in blackgram [*Vigna mungo* (L.) Hepper]. *Legume Research*, **36****08**: 1-8.
- Usharani, K. S., Surendranath, B., Haq, Q. M. R and Malathi, V. G. (2004).** Yellow mosaic virus infecting soybean in northern India is distinct from the species- infecting soybean in southern and western India, *Current Science*. **86**: 6, 845-850.
- Vadivel, K., Manivannan, N., Mahalingam, A., Satya, V. K., Vanniarajan, C. and Saminathan, V. R. (2019).** Correlation analysis for yield, yield components and MYMV disease scores in blackgram (*Vigna mungo* (L.) Hepper). *Electronic Journal of Plant Breeding*, **10**(2): 712-716.
- Varma, A and Malathi, V .G. (2003).** Emerging gemini virus problems: a serious threat to crop production. *Annals of Applied Biology*, **142**, pp. 145–164.