

Original Research Article

Acute and sub-acute oral toxicity studies of an aqueous extract of *Chrysanthellum americanum* (L.) Vatke (Asteraceae) in rodents

Abstract

Chrysanthellum americanum is a medicinal plant widely used in the North region of Cameroon for the treatment of epilepsy and convulsion. This study is aimed at investigating the acute and subacute toxicity of the aqueous extracts of *Chrysanthellum americanum* using experimental rodent models. For the acute toxicity test, a single dose of 27.69, 69.22, 138.45, 276.9 and 5000 mg/kg of extracts was administered orally to mice. In the subacute study, the extracts were administered orally to rats at the doses of 100, 250, 500 and 1000 mg/kg/day for 28 days; and finally, biochemical, haematological, and histological analysis were performed. The highest dose of the aqueous extract (5000 mg/kg) administered orally in the acute toxicity did not induce mortality. However, at the dose of 1000 mg/kg in the sub-acute treatment we observed an increased the concentration in white blood cell and platelet in the haematological parameters and a slight decrease in the concentration of cholesterol and hepatic enzyme (ALAT, ASAT) for the biochemical parameters compared to the normal control group. From this study, it can be concluded that *Chrysanthellum americanum* can be considered safe in oral administration at the dose tested since it did not cause lethality or undesirable effects in the general behaviour.

Keywords: *Chrysanthellum americanum*, acute toxicity, sub-acute toxicity, aqueous extracts

1. Introduction

Many years back, medicinal plants have been used in different regions of African countries for the treatment of several diseases [1]. The therapeutic use of plants for human diseases treatment is a very old practice and has evolved with the history of humanity. This use was mainly based on the idea that plants are natural, easily accessible and risk-free way of treatment. Despite the widespread use of herbal medicine, very few scientific studies have been on *Chrysanthellum americanum* (L.) Vatke to provide information on their safety [2]. Consumers often believed that natural is synonymous to harmlessness. However, a plant can be both useful and toxic, it is a matter of dose: "Potion and poison have the same Latin root" [3]. Recently, in developed countries, interest in plants as a source of new drugs has increased. Toxicological study of any new drug is necessary before it is placed on the market. The interest of such a study is to determine the degree of toxicity of the drug with the aim of better clinical

prescription. The measurement of toxicity is also complex. Toxicity can be acute or chronic and can vary from one organ to another depending on several factors such as age, genetics, sex, diet, physiological state or state of health of the organism [4]. *Chrysanthellum americanum* (L.) Vatke is a plant that belongs to the Asteraceae family. It is an herbaceous that grows in the tropical zone of Africa from Senegal to Nigeria and tropical America from southern Mexico to northern Brazil preferring the wastelands, dry and rocky [5]. It has long been used in traditional medicine as hepatoprotector [6, 7, 8, 9]. It is also used in the treatment of biliary drainage, rheumatic pains and kidney and as an analgesic, vasoprotector capillary and venous endothelium [10]. It is useful for cystic lithiasis, venous insufficiency and artheritis [11] fever, hepatitis, jaundice, and dysentery [12, 13]. In Cameroon, studies on its anticonvulsant and anti-amnesic effects have been carried out [14]. Total flavonoids and total saponins present in the different parts of *Chrysanthellum americanum* induced a protective action against venous endothelium [15, 16, 17]. It also reduces the fragility and permeability of capillaries and veins and is therefore suitable for the treatment of venous diseases of the lower limbs [14, 15]. Most of the therapeutic properties of *C. americanum* extracts are attributed to saponins (chrysanthellin A and B) and flavonoids [18, 19, 20, 15]. The extract has been shown to have pharmacological activity, especially analgesic, anti-inflammatory, capillaroprotective and anti-ulcer activity [5]. Despite the variety of uses and the widely recognized efficacy of the preparation of *Chrysanthellum americanum*, the safety profile of this important medicinal plant has not been elucidated. The aim of this present study is to evaluate the toxicological profile of the decoction of whole plant of *Chrysanthellum americanum*.

2. MATERIALS AND METHODS

2.1. Chemicals

All chemicals' reagents used in the tests of the biochemical and haematological parameters come from Bio-Africa (Yaoundé, Cameroon).

2.2. Plant collection

The whole fresh plant of *Chrysanthellum americanum* was harvested in April 2018 in Garoua, north region of Cameroon, it was then identified at the National Herbarium of Cameroon (Yaoundé) by comparison with the sample recorded under the number 7728 / SRF / Cam. The whole plant were washed with tap water, dried at room temperature,

crushed and sifted with a mesh sieve of 0.5 mm in diameter to obtain fine a powder. The powder was kept in a tightly sealed glass for the preparation of the aqueous extract.

2.3. Plant aqueous extraction

To obtain plant aqueous extract, 10g of powder was introduced into a beaker containing 100 mL of distilled water. The mixture was heated till boiling for 20 minutes on a hot plate at 100°C. After cooling, the mixture was filtered using Whatman paper number 1. The resulting filtrate was evaporated in the ventilated oven set at (60°C) to obtain 1.8 g of dry extract from *Chrysanthellum americanum*, which allowed us to calculate the extraction yield of 18%. Then the extract was kept at 4°C.

$$\text{Yield (\%)} = \frac{\text{Mass of dry extract (g)}}{\text{Mass of dry powder (g)}} \times 100$$

2.4. Experimental Animal

Rats (*Rattus norvegicus*) and mice (*Mus musculus*) used were obtained from the animal housing of the Institute of Medical Research and Medicinal Plants Studies (IMPM), Yaounde, Cameroon. Sixty Swiss albinos mice of 2 to 3 months old (20-30 g) and thirty rats (150-160 g) of both sexes were used respectively for the assessment of acute and subacute toxicity. The animals grouped per sex, were maintained in the plexiglass cages under standard laboratory environmental conditions (ventilated room, 24°C, 75% relative humidity, 12 hours of light/dark cycle) and had free access to tap water and food. The study was carried out in accordance with the Cameroon National Ethical Committee (Ref No. FW-IRB00001954, 22 October 1987). The authorization number (UB-IACUC N°06/2022) was given and the study was done also in conformation with the international regulation, minimizing the number of mice used and their suffering.

2.5. Acute toxicity for the evaluation of LD₅₀

Acute oral toxicity of the *Chrysanthellum americanum* aqueous extracts was assessed the using OECD standard protocol [21]. Mice were randomly divided into six groups of 10 animals each per sex (5 females and 5 males). After the fasting period of 14 hours, all animals were weighed and the different doses of *Chrysanthellum americanum* administered were calculated based on the body weight of each animal. The plant extracts were prepared in distilled water. Animals were then treated as follows: The first group A (control group) received distilled water (10 ml/kg) while the other groups (B, C, D, E) received orally, respective doses of 27.69, 69.22, 138.45, 276.9 and 5000 mg/kg of

aqueous extract in a single administration. Food was provided to the mice about one hour after the different treatments. The doses of aqueous extracts of *Chrysanthellum americanum* that were obtained are the same as in our previous studies on the anticonvulsant and anti-amnesic effect in mice models [14]. From that, effective doses were considered for rodent toxicity tests. Toxicity symptoms displayed by animals were observed 30 minutes after administration, then after every 1 hour for 8 first hours and then once a day for 14 days. All observations were systematically recorded individually for each animal. Mortality, changes in physical appearance, behaviour, injuries, pain and signs of illness were monitored daily during the whole study period [1].

2.6. Sub-acute toxicity

Sub-acute toxicity of the aqueous extracts of *Chrysanthellum americanum* was assessed in Wistar rats of 4-6 months old at the beginning of the experiment divided into group of 6 animals each (n = 6). The extract, dissolved in distilled water, was daily administered to the rats by oral gavage for 28 days according to OECD at the different doses of 100, 250, 500 and 1000 mg/kg, respectively for the tests group B, C, D and E. The control group (group A) received distilled water. The effects of oral administration of *Chrysanthellum americanum* aqueous extracts on food and water intake were assessed daily and the body weight weekly (D7, D14, D21 and D28). After 28 days, the rats were sacrificed after an overnight fast, under ethyl ether anaesthesia. Blood and serum was collected respectively for haematological and biochemical analysis from the jugular vein. Liver and kidneys were quickly removed and rinsed with a 0.9% saline solution. Each organ was weighted and then fixed in 10% formaldehyde solution for histopathological examinations.

2.7. Haematological and biochemical analyses

The blood sample obtained at the end of the 28 days treatment period were analysed immediately using an automatic haematology analyser. Parameters analysed included white blood cells (WBC), red blood cells (RBC), leukocyte and platelet counts, haematocrit, haemoglobin, mean corpuscular volume (MCV), mean corpuscular haemoglobin (MCH) and mean corpuscular haemoglobin concentration (MCHC). For the biochemical analysis, blood sample of each animal was allowed to clot and then centrifuged at 4000 rpm for 10 minutes. The serum collected was used for biochemical analyses such as total proteins (TP), transaminase aspartate (ASAT), transaminase alanine (ALAT), uric acid (URIC), creatinine (CRE), total cholesterol (CHOL) and glucose (GLU) levels using standard analysis kits from Fortress Diagnostics Ltd, UK.

2.7. Histopathological studies of liver and kidneys

All histopathological studies on liver and kidneys were performed according to the following procedures. The organs were dehydrated with 100% ethanol solution and preserved in paraffin. They were then treated in thick sections of 4 to 5 μm , then stained with haematoxylin-eosin and observed under a microscope.

2.8. Statistical analysis

Results are expressed as mean \pm standard error of mean (S.E.M.). Significance differences between control and experimental groups were assessed by Tukey's post hoc test for multiple comparisons using Graph Pad Prism software. *P*-values less than 0.05 were considered to be significant.

3. RESULTS AND DISCUSSION

Since ancient times, in African, Chinese and Ayurvedic medicines, plants have been used as important source of natural chemical compounds with enormous therapeutic potential [22, 23]. Plant medicine is the oldest form of health care known to humanity and, about 80% of the world's population use it to manage health problems [24]. Almost any substance can be harmful at certain doses but, at the same time, can have beneficial effect at a lower dose. Between these two limits, there is a range of possible effects, from subtle long-term chronic toxicity to immediate lethality [25]. During the acute toxicity assessment period, no deaths or signs of severe toxicity were observed after single oral administration of the different doses of *Chrysanthellum americanum* aqueous extract up to the highest dose (5000 mg/kg). At the highest dose of 5000 mg/kg, 1 hour after the oral administration of *Chrysanthellum americanum*, signs and symptoms responses occurred included a decrease in motor activity, heaving breathing and fur erected (Table 1).

Table 1: Acute toxicity of *Chrysanthellum americanum* aqueous extracts administered orally to different groups of mice

Dose (mg/kg)	Sex	D/T	Mortality latency (h)	Toxic symptoms
10ml/kg (distilled water)	Male	0/5	–	None
	Female	0/5	–	None
27.69 mg/kg	Male	0/5	–	None
	Female	0/5	–	None
69.22 mg/kg	Male	0/5	–	None
	Female	0/5	–	None

138.45 mg/kg	Male	0/5	–	None
	Female	0/5	–	None
276.90 mg/kg	Male	0/5	–	None
	Female	0/5	–	None
5000 mg/kg	Male	0/5	–	motor activity, heavy breathing and fur erected
	Female	0/5	–	motor activity, heavy breathing and fur erected

D/T = Dead/Treated mice; None = No toxic symptoms observed; mortality latency = time to death after oral administration.

The aqueous extract of *Chrysanthellum americanum* was administered to different groups of 10 mice (5 males, 5 females) per os in a single dose taken at different doses. The animals in each group were carefully examined for any signs of toxicity (behavioural changes and mortality) for 14 days. The control group received distilled water (10 ml/kg, *p.o.*).

A practical way to characterize the toxicity of a substance is to determine its lethal dose 50 (DL₅₀). This dose identifies the symptoms of intoxication and compares the substances with each other as to their toxic potential. The acute toxicity test assesses adverse events that occur in a short period of time after the administration of a single dose of a test substance. The results of the acute toxicity study indicate that the aqueous extract of *Chrysanthellum americanum* administered orally at different doses (27.69, 69.22, 138.45, 276.9 and 5000 mg/kg) induced no signs of severe toxicity or death in mice, and consequently, the DL₅₀ value of the extract could be greater than 5000 mg/kg. However, laboured breathing, reduced motor activity and poor hair-coat were observed in animals that received the dose of 5000mg/kg. These changes can be explained by the fact that, an analysis of the protein fraction of *Chrysanthellum americanum* revealed a raw protein content determined by the Kjeldahl method equal to 10%, after the acid hydrolysis of proteins, by GC-MS, fifteen amino acids were identified: among which GABA [10] an inhibitory neurotransmitter that is generally present in anti-epileptic drugs and has sedative properties. This sedation property may be explained by the present of flavonoid in the extract which are recognized for their strong power of antidepressive and anxiolytic [26, 27]. The aqueous extract of *Chrysanthellum americanum* can therefore be considered to be safe during oral acute administration up

to dose 5000mg/kg. The current results of the acute toxicity are consistent with the study identified in other reviews where the aqueous extract of *Chrysanthellum americanum* administered orally, showed a lethal dose of 50% (DL₅₀) greater than 3000 mg/kg of body weight [9].

A sub-acute toxicity study examined the toxicity caused by repeated doses over an extended period of 28 days of oral administration in rats. In this subacute toxicity study, rats treated with the aqueous extract of *Chrysanthellum americanum* orally at the doses of 100, 250, 500 and 1000 mg/kg showed no signs of morbidity and mortality. During the experimental period, no apparent changes in behaviour were observed compared to the control group. The effects of daily administration of *Chrysanthellum americanum* aqueous extracts on body weight variation; food and volume of water consumed during the treatment period are shown in Table 2. In addition, a significant decrease (P<0.05) in the amount of food consumption was observed in animals of group E (1000mg/kg) compared to the control group (distilled water). concerning the volume of water consumed by the animals during this 28 days no significant difference is noted in treated group compared to the control group. There were no significant difference also in body weight gain or loss was noted between the control group (A) and the treated groups (B,C,D and E) which is respectively of 187.8±4.8 g, 135.3±3.76 g, 206.7±1.86 g, 175.3±5.01 g and 183.8.3.1±4 g. Based on these observations, we can therefore say that the normal increase in body weight determined the health status of the animals.

Table 2: Effects of *Chrysanthellum americanum* aqueous extracts administration on water and food consumption and weight gain

Weekly treatment	Control	100 mg/kg	250 mg/kg	500 mg/kg	1000 mg/kg
Food (g/day/rat)					
W1	157.71±3.5	147.14±1.56	157.85±1.87	154.71±2.34	139.71±4.87*
W2	160±2.40	159±1.98	158±3.9	159.71±3.76	140±3.98*
W3	168±1.96	167.71±2.08	166.71±2.97	164.85±4.02	143±4.35*
W4	172.71±3.76	178.85±1.54	169.14±1.23	173.57±2.87	147.57±3.64*
Water (ml/day/rat)					
W1	50±3.55	44.28±16.93	52.14±15.89	50±15.56	54.28±9.90
W2	55.85±3.37	56.42±20.74	69.28±18.82	51.71±12.62	52.14±12.06
W3	55±6.12	66.71±12.12	63.85±10.22	57.142±14.12	54.42±9.27
W4	57.14±7.78	57.85±9.22	67.85±16.72	63.57±18.90	55.14±9.34
Weight (g)					
W1	164.5±4.76	113.1±2.6	184.7±1.79	153.7±4.38	175.8±3.07
W2	169.3±3.89	121.1±3.45	192.8±1.83	158.7±5.06	178.7±4.07
W3	173.2±3.82	131.9±2.03	198.2±2.13	162.7±4.96	180.5±3.12
W4	187.8±4.8	135.3±3.76	206.7±1.86	175.3±5.01	182.8±3.14

The results are expressed in mean \pm S.E.M. n = 6 animals; the significant difference compared to the control group were: *P <0.05. W: week of treatment. The aqueous extract of the plant were administered daily orally to groups of rats (n=6) at the following doses: Distilled water (control), 100 mg/kg, 250 mg/kg and 500 mg/kg, 1000 mg/kg for 28 days.

The biochemical profile of rats treated with the aqueous extracts of *Chrysanthellum americanum* (100, 250, 500 and 1000 mg/kg) are presented in Table 3. The biochemical analysis is a common test that measures certain parameters in blood and urine to diagnose diseases or treatments. Basically, it involves determining the concentration and comparison of biochemical indices in blood components. In this case the results show no significant changes in the level of total proteins, creatinine, glucose, urea in animals that received the aqueous extracts of *Chrysanthellum americanum* for 28 days compared to the control group. During this period, there was a significant decrease in liver marker enzymes (ALAT and ASAT) and cholesterol in treated animals at the dose of 1000 mg/kg (P<0.05) compared to control group. These observations of significant decrease in liver enzyme levels and total cholesterol may indicate that the aqueous extracts *Chrysanthellum americanum* has respectively hepatoprotective effects and contain hypolipemic agents in the extract [28, 29, 30].

Table 3: Effect of sub-acute oral administration of the aqueous extracts of *Chrysanthellum americanum* on the biochemical parameters of Wistar rats

Biochemical Parameters	Control	100 mg/kg	250 mg/kg	500 mg/kg	1000 mg/kg
Glucose (mg/dl)	78.51 \pm 1.09	65.27 \pm 4.36	67.07 \pm 3.80	81.94 \pm 2.94	82.57 \pm 1.76
Protein (mg/dl)	10.94 \pm 0.72	10.09 \pm 1.15	10.18 \pm 1.91	9.34 \pm 0.75	8.34 \pm 0.75
Cholesterol (mg/dl)	51.28 \pm 0.09	45.77 \pm 0.09	43.39 \pm 0.44	43.65 \pm 0.07	39.55 \pm 0.04*
Urea (mg/dl)	36.06 \pm 3.90	37.02 \pm 1.18	36.22 \pm 5.39	35.70 \pm 5.34	33.84 \pm 2.83
Creatinine (mg/dl)	5.11 \pm 0.53	5.26 \pm 2.46	5.09 \pm 2.61	4.09 \pm 3.52	4.17 \pm 5.41
ALAT (U/I)	25.6 \pm 0.32	24.9 \pm 0.43	23.92 \pm 0.46	23.82 \pm 0.39	20.76 \pm 0.29*
ASAT (U/I)	63.39 \pm 0.27	61.93 \pm 0.40	61.25 \pm 0.32	62.11 \pm 0.33	60.85 \pm 0.38*

The results are expressed in mean \pm S.E.M. n = 6 animals. The significant difference compared to the control group was: *P <0.05. The aqueous extracts of the plant were

administered daily orally to groups of rats (n=6) at the following doses: Distilled water (control), 100 mg/kg, 250 mg/kg and 500 mg/kg, 1000 mg/kg for 28 days.

The assessment of haematological parameters can be used to determine the extent of the harmful effects of foreign compounds, including plant matter, on blood [31]

The evaluation of the effects of subacute oral administration of the aqueous extracts of *Chrysanthellum americanum* (100, 250, 500 and 1000 mg/kg) on haematological parameters is summarized in Tables 4. Only the number of white blood cells and platelets was significantly higher in the treated groups at the dose of 500 and 1000 mg/kg compared to the control group (P <0.05). No significant changes in the haematological parameters of treated rats could be attributed to plant extract. This increase in white blood cells directly indicates the strengthening of the body's immune defence [31]. So, suggests that the plant extracts contain biologically active ingredients that can strengthen the immune system by increasing the number of defensive white blood cells.

Table 4: Effect of sub-acute oral administration of aqueous extract of *Chrysanthellum americanum* on haematological parameters of Wistar rats.

Parameters	Control	100 mg/kg	250 mg/kg	500 mg/kg	1000 mg/kg
WBC(*10³/μl)	12.75±3.23	12.77±2.01	13.03±0.69	17.13±4.16*	19.93±3.07*
RBC (*10⁶/μ)	7.75±0.35	8.10±0.67	7.98±0.36	8.08±0.36	8.18±0.65
HGB (g/dl)	14.07±0.68	13.60±1.50	14.00±0.41	14.12±0.51	14.18±0.89
MCV (fL)	52.97±1.13	52.73±0.69	52.90±1.29	53.48±1.13	53.02±2.0
MCH (pg)	18.02±0.72	16.78±0.92	17.57±0.54	17.47±0.50	17.37±0.82
MCHC(g/dl)	34.00±0.86	31.72±1.82	33.18±0.46	32.68±0.47	32.77±0.60
HCT (%)	41.35±0.01	42.67±0.03	42.18±0.01	43.2±0.02	43.28±0.03
PLT(10³μ)	855,83±127,88	886,5±369,13	973±198,80	881±137,29	927,17±187,5**

The results are expressed in mean ± S.E.M. n = 6 animals. The significant difference compared to the control was: *P <0.05. The aqueous extracts of the whole plant were administered daily orally to groups of rats (n = 6) at the following doses: Distilled water

(control), 100 mg/kg, 250 mg/kg and 500 mg/kg, 1000 mg/kg for 28 days. Number of white blood cells (WBC), red blood cell count (RBC), haemoglobin (HGB), haematocrit (HCT), platelets (PLT), average globular volume (MCV), medium corpuscular haemoglobin (MCH), mean haemoglobin concentration (MCHC).

Table 5 shows the effects of sub-acute oral administration of the aqueous extracts of *Chrysanthellum americanum* on the organ weights of Wistar rats. In this study, there was no significant change in the weight of the liver, kidneys, spleen, heart and brain of the animals of groups treated with extract at the different doses over the 28 consecutive days compared to animals in the control group.

Table 5: Effect of sub-acute oral administration of the aqueous extract of *Chrysanthellum americanum* on the organ weights of Wistar rats

Organs	Control	100 mg/kg	250 mg/kg	500 mg/kg	1000 mg/kg
Liver	6.37±0.33	5.83±1.69	6.01±0.41	5.36±0.21	5.92±0.46
Kidney	1.49±0.26	1.40±0.28	1.27±0.08	1.14±0.05	1.22±0.05
Brain	2.11±0.08	2.10±0.08	2.05±0.12	1.97±0.07	2.02±0.11
Spleen	0.71±0.07	0.79±0.13	0.74±0.25	0.71±0.07	0.75±0.10
Heart	0.83±0.05	0.79±0.05	0.80±0.06	0.80±0.06	0.79±0.05

The results are expressed in mean \pm S.E.M. n = 6 animals. There is no significant difference compared to the control. The aqueous extracts of the whole plant were administered daily orally to groups of rats (n = 6) at the following doses: Distilled water (control), 100 mg/kg, 250 mg/kg and 500 mg/kg, 1000 mg/kg for 28 days.

The Evaluation of liver and kidney function is of primary importance in assessing the toxic properties of extracts and medications [31]. Histological examinations of some visceral organs (liver and kidney,) of animals who received daily the different doses of *Chrysanthellum americanum* aqueous extracts for 28 days are presented in the figure 1 and 2. The results revealed no signs of vascular or inflammatory changes.

Figure 1 shows the histopathology of the hepatic tissue of animals of the control group and test groups treated with the different doses of extracts. We observed a normal vein and artery structure and a clearly visible of bile duct in this organs. On the other hand, we observe a leukocyte infiltration on the sections of animals from lot E, treated with 1000 mg/kg of aqueous extract of *Chrysanthellum americanum*. The biochemical, haematological and histological analysis did not show any abnormality, it could be explained by poor rinsing of the section before reading under the microscope.

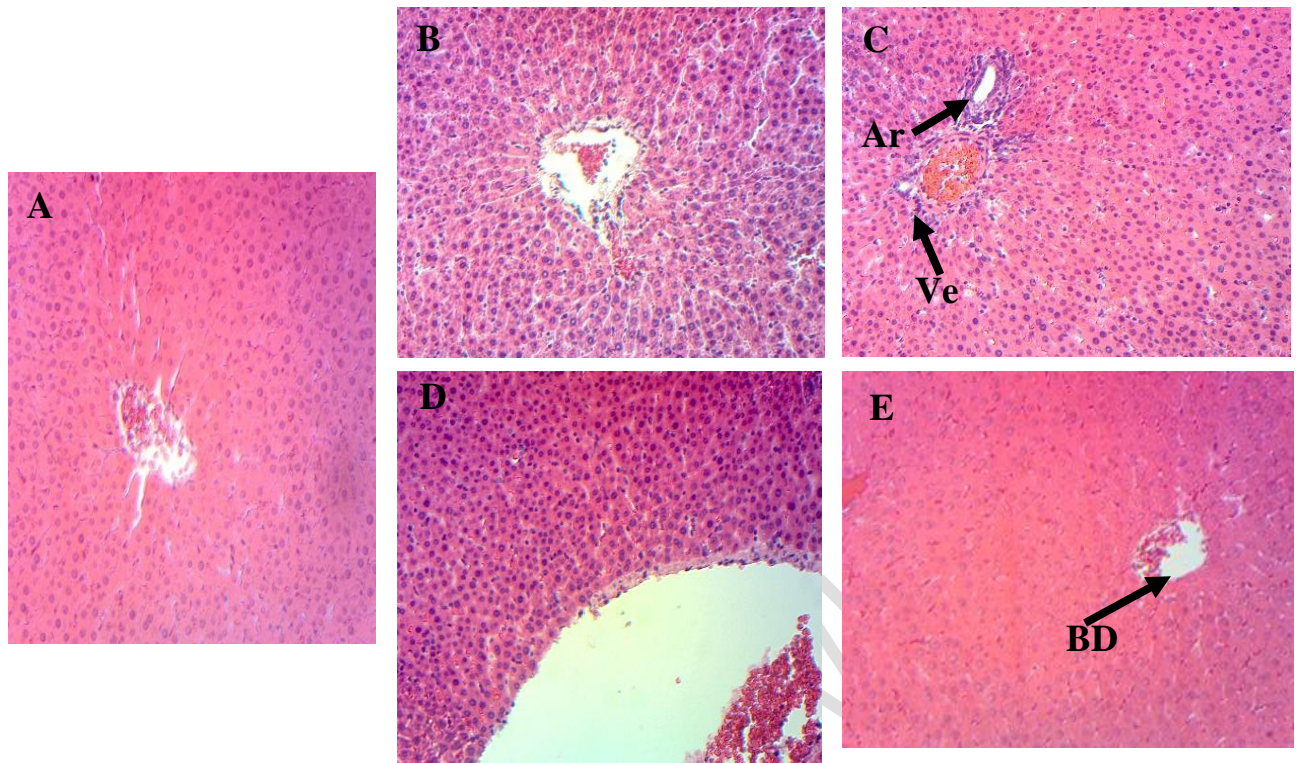


Figure 1: Photomicrographs of stained liver sections of rats treated with aqueous extract of *C. americanum*. A: distilled water (10 ml/kg), B: 100 mg/kg, C: 300 mg/kg, D: 500 mg/kg, E: 1000 mg/kg, Ve: Vein, Ar: Artery, BD: Bile Duct, Magnifications, all $\times 100$.

Figure 2 shows the histopathology of the renal tissues of animals in this study for this purpose, we observed a normal structure of the glomerulus, Proximale Tube, Distal Tube, Glomerular space in kidneys section of the animals. No abnormality was also observed on the organs of animals receiving the different dose of the aqueous extract.

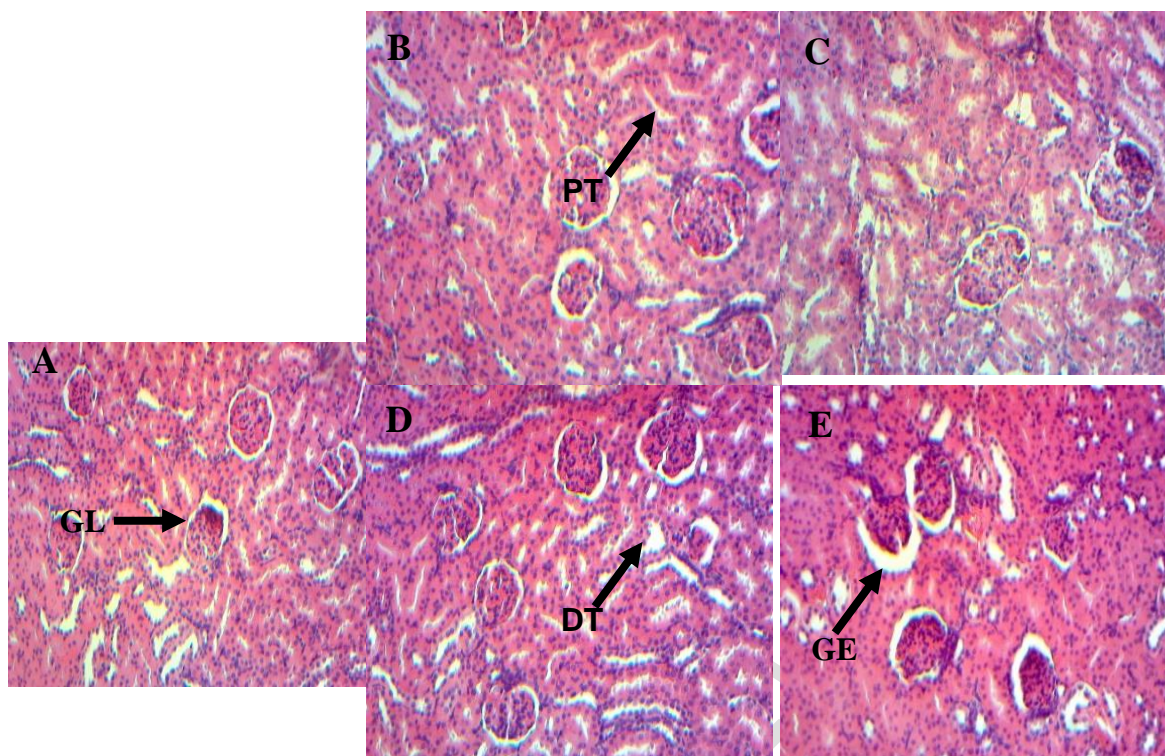


Figure 2: Photomicrographs of stained Kidney sections of rats treated with aqueous extract of *C. americanum*. A: distilled water (10 ml/kg), B: 100 mg/kg, C: 300 mg/kg, D: 500 mg/kg, E: 1000 mg/kg, GL : Glomerulus, PT : Proximale Tube, DT : Distal Tube, GE : Glomerular space Magnifications, all $\times 100$.

Macroscopic and microscopic examination of some vital organs show that the aqueous extract of *Chrysanthellum americanum* at the dose 1000 mg / kg which is the highest dose used in this subacute toxicity study produced no alteration of the cell structure or harmful effect on organs.

5. Conclusion

In conclusion, we can say that *Chrysanthellum americanum* extracts can be considered non-toxic at the oral doses tested in the acute as they did not cause either lethality or adverse changes in the general behaviour. Nevertheless, some sedative effects were recorded in mice that treated with the high acute dose of *Chrysanthellum americanum* extract. The sub-acute oral administration of the plant extract did not induce significant alterations in almost all biochemical and haematological parameters in rats. However, white blood cell and platelet which were significantly increased and a slight decrease in the concentration of cholesterol and hepatic enzyme (ALAT, ASAT) in rats treated with the plant extracts.

Data available

The results obtained throughout this experiment are included within this article.

REFERENCES

- [1] Ndaleh WN, Christian KT, Germain ST, Jean Paul T, Frederico L, Raquel SJ, Helen KK. Acute and sub-chronic toxicity studies of three plants used in Cameroonian ethnoveterinary medicine: *Aloe vera* (L.) Burm. f. (Xanthorrhoeaceae) leaves, *Carica papaya* L. (Caricaceae) seeds or leaves, and *Mimosa pudica* L. (Fabaceae) leaves in Kabir chicks. *Journal of ethnopharmacology*. 2016; (178): 40–49.
- [2] Dias FDL, Takahashi CS. Cytogenetic evaluation of aqueous extracts of the medicinal plants *Alpinia mutans* rose (Zingerberaceae) and *Pogostemum hyneanus* benth (Labitae) on Wistar rats and *Allium cepa* (Liliaceae) root tip cells. *Brazilian Journal of Genetics*. 1994; 17(2): 175–180.
- [3] Mohamed Z. The risks of herbal medicine, Monographs of the most common toxic plants in Morocco, Thesis of the Kingdom of Morocco University Mohamed v Souissi Faculty of Medicine and Pharmacy Rabat. 2008; 125-136.
- [4] Ernest H. A textbook of modern toxicology” Published by John Wiley & Sons, Inc., Hoboken, New Jersey. Published simultaneously in Canada, 4th ed. p. cm. ISBN. 2010; 462-470.
- [5] Francois F, Castanet T, Gisele P, Talence; Annie T, le Bouscat; Claude A-M, C, Henri C, Lyon, all of France. Laboratoires Sarget, Meriqnac, France.1978; 4(24) :180-195.
- [6] Lièvre H, Guillot B, Raymond E. *Chrysanthellum*, un hépatotrope normolipémiant et vasculotrope. *J Jeune Prat*. 1984; 7:1–8.
- [7] Hare H. Defense and illustration of drainage. *Cah Biother*.1985; 87:12–16.
- [8] Larive G. From hypolipidemia to vascular protection. Modern contribution of *Chrysanthellum americanum* Vatke. *Plant Med*. 1987; 25: 6–10.
- [9] Samson G, Nabère O, Nâg-Tiero Roland M, Prosper TK, Noufou O, Alin C, Adama H, Martin K and Odile GN. Relevance of *Chrysanthellum americanum* (L.) Vatke extracts in rat liver protection. *International journal of Biochemistry Research & review*. 2019; 25(2): 1-10.
- [10] Lydia F. Use of *Chrysanthellum americanum*. *European Scientific Journal* edition. 2013; 9(36): 1857 – 7881.
- [11] Guillot B, Despages G, Delorge F. Stress et drainage en phytothérapie. Apport du *Chrysanthellum americanum*. In: Bertrand JP (ed) *Les entretiens de Monaco sur les thérapeutiques du stress*. Rocher, Monaco. 1988; 129–139.

- [12] Mévy JP, Bessière JM and Dherbomez M. Composition Antimicrobial and Antioxidant Activities of the volatile oil of *Chrysanthellum americanum* (Linn.) Vatke,”. *Journal of Essential Oil Bearing Plants*. 2013; 15(3): 489-496.
- [13] Burklill HM. *The useful pants of West Africa*. Royal Botanic Garden Kew. 1985; vol.1.
- [14] Nguezeyeye Y, Yadang, FSA, Pale S, Jugha VT, Mambou HMAY, Bila RB, Ojongnkpot TA, Taiwe GS, Agbor GA and Bum EN. Anticonvulsant Effects of *Chrysanthellum americanum* L. (Vatke) Aqueous Extract in Mice Pilocarpine Model of Epilepsy and Associated Memory Impairment: Role of Antioxidant Defense System and Cholinergic Transmission. *Journal of Biosciences and Medicines*. 2023; 11: 81-102.
- [15] Gaspar T. *Chrysanthellum americanum*: Micropropagation and Flavonoid Production. In *Medicinal and Aromatic Plants VII*. 1994; 28: 113–122.
- [16] Brasseur T, Angenot L, Pincemail J, and Deby C. Action antiradicalaire de flavonoïdes et d'extraits de *Chrysanthellum indicum*. *Plantes médicinales et phytothérapie*. 1987; 21(2): 131-137.
- [17] Roxana C, Alin C, Ioana-Miruna B, Samson G, Anca T, Carol S, Luminita H, Radu L. Antioxidant Capacity and Behavioral Relevance of a Polyphenolic Extract of *Chrysanthellum americanum* in a Rat Model of Irritable Bowel Syndrome Hindawi. *Oxidative Medicine and Cellular Longevity*. 2019; 1-13.
- [18] Becchi M, Bruneteau M, Trouilloud M, Combier H, Sartre J, Michel G. Structure of a new saponin: chrysanthelline A from *Chrysanthellum P*. *Eur J Biochem*. 1979 ; 102: 11–20.
- [19] Becchi M, Bruneteau M, Trouilloud M, Combier H, Pontanier H, Michel G. Structure de la chrysanthelline. *Eur J Biochem*. 1980 ; 105 : 271–277.
- [20] Honoré-Thorez D. Description, identification et usages thérapeutiques de *Chrysanthellum americanum*, *Chrysanthellum indicum*. DC Subsqa afroamericanum BL Turner. *J Pharm Belg*. 1985 ; 40: 323–331.
- [21] OECD. Guidelines for the testing of new chemicals revised draft guideline; acute and sub-acute oral toxicity, 2008. <http://iccvam.niehs.nih.gov/suppDocs/fedDocs/OECDtg425.Pdf>.
- [22] Nelson-Harrison ST. Chapter 24 Ethnobotanical research into the 21st century. *Adv. Phytomedicine*. 2000; 1: 283–307.

- [23] Calixto J B. Twenty-five years of research on medicinal plants in Latin America” A personal view. *Journal of Ethnopharmacology*.2005; 100: 131–134.
- [24] WHO. *Traditional Medicine Strategy*. Geneva: World Health Organization, 2002-2005. http://www.wpro.who.int/health_technology/book_who_traditional_medicine_strategy_2002_2005
- [25] Chambers FL. A textbook of modern toxicology. In: Hodgson E., Levi P. E., editors. *Trends in Pharmacological Sciences*. Elsevier. 1987; 8: 408
- [26] Luo L, Sun Q, Mao YY, Lu YH, Tan RX. Inhibitory effects of flavonoids from *Hypericum perforatum* on nitric oxide synthase,” *Journal of Ethnopharmacology*. 2004; 93 (2-3): 221–225.
- [27] Wang X, Zhang L, Hua L, Xing D, Du L. Effect of flavonoids in *Scutellariae Radix* on depression-like behavior and brain rewards: possible in dopamine system. *Tsinghua Science and Technology*. 2010; 15, (4): 460–466.
- [28] Mevy JP, Bessiere JM, Dherbomez M. Composition, antimicrobial and antioxidant activities of the volatile oil of *chrysanthellum americanum* (linn.) vatke. *J. Essent. Oil-Bearing Plants*. 2012; 15: 489–496.
- [29] Samson G, Adama H, Nabere-Oand OGN, Anti-bacterial activity and phytochemical composition of extracts of three medicinal asteraceae species from burkina faso. *Asian J Pharm Clin Res*. 2012; 5(2): 37-44.
- [30] Séverine J. Contribution of Plant Drugs in the Prevention of Cardiovascular Diseases Linked to Hypercholesterolemia. Ph.D. Thesis, Henri Poincaré University, Nancy, France. 2005.
- [31] Chang-Gue S, Seung-Hyun H, Jung-Hyo CS, Jang-Woo, Chin-Ho C, Yeon-Weol L, Chong-Kwan C. Induction of hemopoiesis by saenghyuldan, a mixture of Ginseng radix, *Paeoniae radix*, and *Hominis placenta*. *Acta Pharmacol. Sin*. 2003; 24: 120–126.