

Case study

THE PUBLIC PERCEPTION OF THE EXISTENCE OF COAL MINES IN SOUTH KALIMANTAN PROVINCE INDONESIA

ABSTRACT

Background dan Objective: The coal business is a source of foreign cash for the country, but it is also thought to have a harmful impact on the environment, therefore its continued existence can give rise to a variety of public attitudes. The purpose of this study is to determine the public's perception of the existence of the coal mining industry. **Method :** A survey approach is used in this study to obtain information from respondents. Questions were asked both through interviews through questionnaires and secondary data. **Rusults ;** Based on the community leadership structure in the study area, 35 respondents (48%) followed non-formal leadership, while 38 respondents (52%) followed formal leadership. Community conflicts are usually triggered by land boundary disputes (38%), and complaints are not responded to (38%), and resolved by consensus deliberation. Community responses to the impact of coal transportation are health problems (52%), good economic impact (54%), public road disturbance (66%), noise (66%), and air quality (72%). Coal transportation also has an impact on business prospects, namely 10% of respondents, a lot, 66% moderate, and 24%, none. Also for the criteria of an increase in income, 16% of respondents, an increase, 62%, a small increase, and 22% did not report. The environmental disturbance parameter states that 60% of respondents are disturbing and 40% are not. Environmental management activities are 20% of respondents, 34%, abstain and 22% bad. **Conclusion :** Management of social and economic components through community development and empowerment programs, as well as compliance with environmental impact analysis documents and monitoring plans - environmental management

Keywords: Public perception, Existence of coal mines, Community leadership, Community conflict, Coal transportation, Community Empowerment, Revegetation

1. INTRIDUCTION

The mining industry is a source of foreign exchange for a country. This sector also absorbs a large number of workers, therefore it has a positive impact on job creation and increases economic growth. Coal is one of the most important commodities in Indonesia's ^{VI-1} mining sector, contributing 2.57 trillion in state revenue in 2004, and 8.7 trillion in 2007 (1) and increasing to IDR 124.4 trillion in 202, so that the country's foreign exchange profits from coal commodities increase in step with the growth in coal output to fulfill local and export needs.

South Kalimantan Province is well-known for its enormous natural resources, particularly mining. Mining minerals found in the South Kalimantan region include mineral minerals such as coal, which is a leading commodity, therefore the coal mining industry becomes one of the most important businesses in supporting the economy of South Kalimantan [2].

Tanjung Alam Jaya incorporated company is one of the mining companies that has obtained a coal mine exploration permit in South Kalimantan based on an evaluation of the feasibility study report that is an attachment to the Techno-Economic Approval for Open Mining Feasibility Studies from the Directorate General of Minerals and Coal, Ministry of Energy and Mineral Resources of the Republic of Indonesia. PT. Tanjung Alam Jaya has been carrying out coal mining operations in Pengaron District and Makmur Connect District, in Banjar Regency and Binuang Regency and

Hatungun Regency, in Tapin Regency, South Kalimantan Province, since 2004, and adjusted the Mining Business Permit Area (WIUP) code in 2021 based on data from Minerba One Data Indonesia (MODI). Coal mining is a high-risk business sector, in accordance with Government Regulation Number 5 of 2021 concerning Implementation of Risk-Based Business Licenses, so a special study is needed regarding environmental impact analysis, including discussion of active community involvement and assessment of public perceptions of the impact of coal mining [3]

The impact of this mining operation will undoubtedly have an impact on the socioeconomic conditions of the local community, both positively and negatively. [4]. Socio-economic impacts can be categorized as real impacts and special impacts. The real impact category includes the effects of project operations, such as population movement, noise, and air pollution, that occur throughout the pre-construction, construction, operation, and post-operation stages. A special impact is one that results from a community's perception of a project's risk [5] The impact on socioeconomic conditions is investigated through business opportunities, higher income, changes in livelihood, changes in people's behavior, and the risk of communal disputes [6]. Mining activities have societal consequences, which can take the shape of negative perceptions of coal mining activities [7] Community perceptions are heavily reliant on community acceptability and how people see the impact of mining [8]. Inequality in socio-economic conditions can lead to horizontal conflicts in society which lead to negative perceptions of the existence of coal mines. [9] This encourages the local community to not participate actively and fosters social jealousy, which leads to a negative perception of coal mining activities; however, if community participation and involvement is carried out properly, it will lead to good perceptions [10]

Based on this background, this study aims to determine public perceptions of the existence of coal mining in the research area.

2. METHOD OF RESEARCH

Affected Community Response

The research was done from June 17 to July 19, 2022, and the response efforts were centered on villages directly affected by PT Tanjung Alam Jaya's (PT TAJ) coal mining activity. A quantitative descriptive analytic approach was used to survey respondents from directly affected populations. Quantitative study seeks to characterize occurrences or understand their patterns in quantifiable terms [11]

VI-2

Based on the study area, villages directly affected by PT. TAJ covers 5 villages namely: Benteng Village, Lumpangi Village and Mangkauk Village, Pengaron District as well as Batang Banyu Village and Sungai Lurus Village, Sambung Makmur District, Banjar Regency. Based on data from the Banjar Regency Central Bureau of Statistics for 2021, the total population of the five villages is 8,846 people.

Table 1. The number of villagers directly affected by mining

Village	Population (people)
Benteng	1.881
Lumpangi	359
Mangkauk	3.973
Batang Banyu	1.335
Sungai Lurus	1.298
Amount	8.846

Source: BPS City of Banjar, 2021

Analysis of the needs of the number of responses using Slovin's formula, as follows [12]

$$n = \frac{N}{(1 + (N \cdot e^2))}$$

Keterangan:

n : Sample atau respondent

N : Population

E : Error

The total population (N) is 8,846 people; if the objective level of confidence is 90%, then e is 0.1, and the number of samples required is:

$$n = \frac{8.846}{(1 + (8.846 \cdot 0,1^2))} = 98,88 \approx 99 \text{ respondent}$$

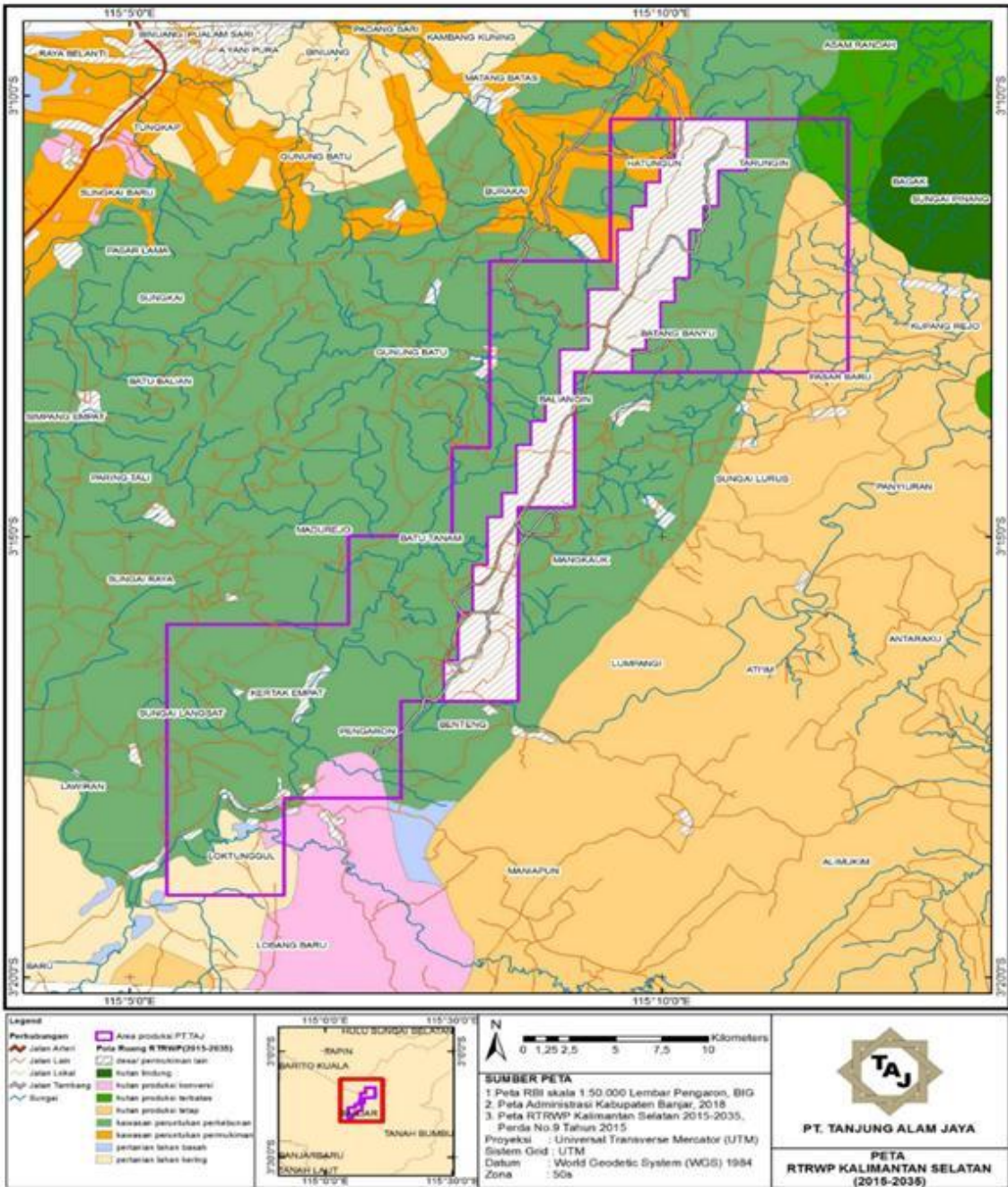
This village is directly affected by coal mining activities covering 5 villages; to ensure equity in each village, the number of respondents in each village is 30 people, bringing a total of 150 respondents. Withdrawal of respondents has met the basic needs of respondents as well as achieving the goal of trust (minimum 99 respondents)

Respondent Profile

Based on the profile of the respondents, 88% of those surveyed were male, while 12% were female. The education level of the respondents included 44% graduating from high school, 14% graduating from tertiary education, and 38% graduating from junior high school and 4% graduating from elementary school, so that a total of 96% had completed 9 years of compulsory education. The majority of respondents 72% were born in the study region, and 12% had lived in the study area for more than 30 years, thus they were familiar with the environmental conditions before to and during PT. TAJ's coal mining operations. The majority of respondents (60%) are farmers with monthly incomes of less than 2 million rupiah (54%) and no supplemental income (80%). The following respondent profiles are presented : respondent's additional income Respondent's gender

3. RESULTS AND DISCUSSION

Geographically, the mining region of PT Tanjung Alam Jaya (PT TAJ) is located in the District of Connect Makmur, Penggaron District of Banjar Regency, and Hatungun District of Tapin Regency, South Kalimantan Province. Based on Banjar Regency Regional Regulation No. 4 of 2021 [13], paragraph 4 of the Banjar Regency Spatial Plan for 2021-2041. The coal mining area is distributed across Simpang Empat District, Connect Makmur District, Telaga Bauntung District, Cintapuri Darussalam District, Karang Intan District, Mataraman District, and Pengaron District, and spans an area of roughly 2,352 hectares. Based on Regional Regulation No. 10 of 2014 concerning Spatial Plans for Tapin Regency 2014-2034, Paragraph 5 is Mining Designated Areas [14] The main activity of PT. Tanjung Alam Jaya at the location of the Coal Mining Concession Work Agreement is a coal mining business which includes the stages of general investigation, exploration, feasibility study, construction, mining, processing, transportation and sale of coal, using open pit mining operations. Map. 1 shows that the coal mining area is in accordance with the spatial plan of Banjar Regency and Tapin Regency, South Kalimantan



Map 1. Map of suitability of business activity location with spatial and regional layout plans

Socio-Economy and Culture

Demographics

Tapin Regency will have a population of 191,801 people in 2021, with 96,952 men and 94,849 women. Tapin Regency has a population density of 88 persons per km². Hatungun District has a population of 9,256 people and a population density of 116 people per km². [15]

Kabupaten Banjar memiliki jumlah penduduk sebanyak 13.943 jiwa dengan jumlah penduduk 7.083 laki-laki dan 6.860 perempuan. Kepadatan penduduk di Kecamatan Pengaron adalah 506 jiwa per kilometer persegi.

Table 1. Population Statistics for the Villages in the Study Area

Regency	Subdistrict	Village	Man	Women	Total population	Population density per square kilometer
Banjar	Pengaron	Maniapun	663	648	1.311	29,8
		Lobang Baru	506	472	978	24,45
		Loktunggul	494	507	1.001	24,9
		Kertak Empat	321	317	638	31,9
		Pengaron	1.430	1.415	2.845 ¹⁻⁵	140,15
		Benteng	972	909	1.881	99
		Lumpangi	185	174	359	8,95
		Ati'im	485	472	957	47,85
		Mangkauk	2.027	1.946	3.973	99,33
	Sambung Makmur	Madurejo	1.482	1.528	3.010	259
		Batu Tanam	797	779	1.576	295
		Gunung Batu	628	675	1.303	157
		Baliangin	829	844	1.673	187
		Batang Banyu	656	679	1.335	92
		Sungai Lurus	634	664	1.298	90
		Pasar Baru	857	789	1.646	76
	Simpang Empat	Sungai Raya	275	261	536	17,87
		Lawiran	301	263	564	49,04
		Sungai Langsat	244	217	461	60,18
Tapin	Hatungun	Matang Batas	442	486	928	86

Regency	Subdistrict	Village	Man	Women	Total population	Population density per square kilometer
		Burakai	335	352	687	139
		Hatungun	1.088	1.078	2.166	199
		Tarungin	449	432	881	181
		Bagak	590	608	1.198	81
		Asam Randah	427	431	858	60
		Batu Hapu	932	1.002	1.934	618
		Kambing Kuning	459	446	905	54
	Binuang	Tungkap	1.850	1.928	3.778	491
		A Yani Putra	1.213	1.237	2.450	1.949
		Gunung Batu	671	677	1.348	168
		Padang Sari	311	323	634	NA
		Pualam Sari	1.092	1.104	2.196	195
		Binuang	3.371	3.512	6.883	1.088
		Pulau Pinang	1.162	1.151	2.313	86
		Pulau Pinang Utara	1.315	1.341	2.656	66
		Raya Belanti	2.143	2.165	4.308	524
		Karangan Putih	1.753	1.753	3.506	165
		Mekar Sari	597	538	1.135	NA

Sumber: BPS Banjar, 2022 dan BPS Tapin, 2022

Socio Economic

The growth rate of the Banjar Regency's Gross Regional Domestic Product in 2020 declined by -1.96% when compared to 2018. According to data from the Banjar Regency Statistical Center, the agriculture category contributes 17.65% of the Gross Regional Domestic Product in 2020, trade contributes 14.67%, and mining contributes 13.50%. [16]

The residents around the TAJ Coal Mine mostly make a living by cultivating crops or farming, especially through rubber fields and paddy fields whose production is the mainstay of the farmers. Other occupations include those in the service sector, traders, private employees, and government officials. Furthermore, coal mining locations generate jobs for the community as miners, coal transport truck drivers, or heavy equipment operators in the mining area. VI-6

Table 2. Banjar Regency's Gross Regional Domestic Product from 2017 to 2021

No	Business/Industry Sector	2017	2018	2019	2020	2021
1	Agriculture, Forestry and Fisheries	2.619,31	2.758,92	2.949,76	2.918,96	3.007,76
2	Mining and excavation	2.332,36	2.497,47	2.419,57	2.231,37	2.546,40
3	Processing industry	1.043,86	1.098,86	1.143,04	1.130,20	1.223,63
4	Procurement of Electricity and Gas	18,83	21,88	23,46	25,25	27,11
5	Water Procurement, Waste Management, Waste and Recycling	32,73	35,14	37,86	39,74	42,12
6	construction	1.449,93	1.602,85	1.741,06	1.732,04	1.855,07
7	Wholesale and Retail Trade	2.050,17	2.260,27	2.493,03	2.419,98	2.561,36
8	Transportation and Warehousing	669,87	731,65	806,15	792,30	819,43
9	Provision of Accommodation and Meals	445,62	492,93	542,69	549,31	576,06
10	Information and Communication	518,30	567,22	623,65	676,07	740,45
11	Financial Services and Insurance	321,12	345,33	366,63	376,80	403,65
12	Real Estate	489,05	525,40	567,61	596,43	643,28
13	Company Services	50,86	55,53	61,73	62,26	65,03

14	Government Administration, Defense, and Social Security	1.022,22	1.101,85	1.224,17	1.270,84	1.259,23
15	Education Services	786,30	856,93	925,53	988,69	1.037,87
16	Health Services and Social Activities	325,17	353,98	383,24	426,49	475,24
17	Other Services	236,26	262,84	289,91	291,87	302,19
Gross Regional Domestic Product (GRDP)						

Source: Figures for Banjar Regency 2022 (16)

From 2017 to 2021, the mining sector in Banjar district generates approximately 15% of the Regency's Gross Regional Domestic Product.

Tapin Regency's GRDP increased by 3.41% in 2021 compared to 2020. Agriculture, Livestock, Forestry, and Fishery recorded the lowest growth of -1.57%. Health services grew the most, with a 9.13% increase. Tapin Regency's Gross Regional Domestic Product (in billions of rupiah) from 2017 to 2021 is given below.

Table 3. . Tapin Regency's Gross Regional Domestic Product from 2017 to 2021

No	Business/Industry Sector	2017	2018	2019	2020	2021
1	Agriculture, forestry and fisheries	1.625,55	1.642,88	1.777,38	1.716,19	1.712,99
2	Mining and excavation	2.066,27	2.289,03	2.293,86	2.236,35	2.574,05
3	Processing industry	552,24	545,99	574,86	558,47	617,21
4	Procurement of Electricity and Gas	6,84	7,87	8,44	9,06	9,70
5	Water procurement, waste management, waste and recycling	23,41	25,81	27,26	27,28	28,41
6	Construction	420,32	456,46	491,50	491,17	529,37
7	Wholesale and retail trade	732,86	813,70	892,40	906,92	961,51
8	Transportation and Warehousing	237,33	260,08	278,94	278,30	294,75
9	Provision of Accommodation and Meals	171,36	188,92	201,22	204,95	222,95
10	Information and communication	263,65	290,08	312,18	333,83	360,47
11	Financial services and insurance	85,13	94,39	103,73	109,51	114,61
12	Real estate	104,31	112,72	120,23	126,64	134,47
13	Company services	8,63	9,30	10,14	10,15	10,99
14	Government administration, defense, and social security	572,36	617,21	660,84	678,40	709,61
15	Education services	383,56	419,09	445,70	456,45	490,03
16	Health services and social activities	136,52	148,08	158,68	167,43	190,39
17	Other services	70,46	77,55	80,88	82,80	85,80
Gross Regional Domestic Product		7.430,81	7.999,16	8.438,25	8393,89	9.047,33

The mining sector in Tapin district is the business sector which contributes the highest to the Regency's Gross Regional Domestic Product from 2017 to 2021, around 28%.

Socio-Cultural: The Banjar people, who practice Islam, live in the villages in the study area. This is owing to the strong influence of Malay culture and the high mobilization of the Bugis and Madurese as devout Muslims. Meanwhile, Christians, Buddhists, and Hindus are mostly concentrated in sub-district and district city levels.

Education: Banjar Regency contains schools ranging from kindergarten to high school. Pengaron District also has educational institutions ranging from Kindergarten to Senior High School. Tables 4

and 5 show the number of educational facilities, teachers, and students in Banjar and Pengaron in 2020.

Table 4. Number of Schools, Teachers and Students in Banjar Regency in 2020/2021

Educational level	School	%	Teacher	%	Student
Kindergarten (TK)	170	31%	545	8%	6857
Raudatul Atfal (RA)	45	20%	228	9%	2473
Elementary School (SD)	371	12%	3064	7%	43287
Madrasah Ibtidaiah (MI)	104	83%	126	1%	15019
Junior High School (SMP)	73	6%	1196	9%	13092
Madrasah Sanawiyah (MTs)	58	6%	1018	11%	9361
Senior High School (SMA)	21	4%	501	7%	7632
Vocational High School (SMK)	13	4%	350	6%	5617
Madrasah Aliah (MA)	38	9%	408	8%	5267
Total	893	19%	7436	7%	108605

Banjar Regency has 170 kindergartens, 45 Raudatul Athfal, 371 elementary schools, 104 elementary schools, 73 junior high schools, 58 Sanawiah Madrasas, 21 senior high schools, 13 vocational high schools, and 38 Madrasah Aliyah in 2020/2021 (16)

Table 5. Number of Schools, Teachers and Students in Banjar Regency in 2020/2021

Educational level	School	%	Teacher	%	Student
Kindergarten (TK)	5	71%	7	4%	166
Elementary School (SD)	16	14%	114	7%	1577
Madrasah Ibtidaiah (MI)	3	12%	26	12%	217
Junior High School (SMP)	3	9%	32	12%	259
Madrasah Sanawiyah (MTs)	1	6%	16	6%	253
Senior High School (SMA)	1	5%	20	7%	274

Pengaron District has 5 Kindergartens, 16 Elementary Schools, 3 Elementary Madrasahs, 3 Junior High Schools, 1 Sanawiah Madrasah, and 1 Senior High School in 2020/2021.

Participation of the Community

Coal mining activities at PT. Tanjung Alam Jaya have a favorable impact on the community surrounding the mining region, particularly the administratively adjacent area to the study area. The introduction of employment prospects for local populations is a big positive impact of this mining activity. Tanjung Alam Jaya needs 304 people, 47 (15%) of whom are from the local community. Furthermore, the growth of business opportunities such as traders, stalls and stores, transportation services, house rental, workshops, and other commercial sectors has increased the economy in mining areas. Exploration of coal mines, and mining in general, continues to have a positive impact on labor absorption and economic development in the surrounding area studi [17]

According to the report on the implementation of Environmental Management and Monitoring activities in 2018, PT. Tanjung Alam Jaya also contributes to the development process in the domains of education, religion, and sports. Every month, PT Tanjung Alam Jaya participates in activities such as: (1) Madrasah teacher honorarium aid for Mangkauk Village, Pengaron District. (2) Assistance with the execution of religious events in the assisted villages dan (3) Sports and youth empowerment activities in Lumpangi Village, Pengaron District.

The Partnership Program and Community Development Program (PKBL) is a government policy mandated by the Minister of State-Owned Enterprises Number: Kep-236/MBU/2003, which requires all State-Owned Enterprises to set aside a portion of their profits for community empowerment via

the Corporate Social Responsibility approach, with an emphasis on sustainable community development. [18]. Laws and regulations govern the company's Corporate Social Responsibility requirements. The legal basis for Corporate Social Responsibility is scattered among numerous regulations, such as Law Number 40 of 2007 about Limited Liability Companies and Government Regulation Number 47 of 2012 addressing Limited Liability Company Social and Environmental Responsibility [19]

Socio-Cultural Conditions

The Banjar tribe is the province of South Kalimantan's largest ethnic group. According to the responses, the level of conformity with non-formal leadership was 35 respondents (48%), whereas compliance with official leaders was 38 respondents (52%). Informal leadership or community leaders are still very well known in the Banjar community, therefore problems that arise in the community due to misunderstandings or horizontal conflicts, differences of opinion, or differences of opinion can be handled through community leaders.

According to the results of the respondents, 8 respondents stated that there had been a problem or conflict, with 50% of them intersecting with the existence of PT. TAJ, 1 respondent stating that the conflict was caused by land boundaries, and 3 respondents stating that the conflict was caused by PT. TAJ's slow response to community suggestions or responses. Land boundary disputes with the community have been settled through consensus-building deliberation. Despite the fact that coal mining operations have been ongoing for more than ten years, only four respondents said that there had been no social difficulties in the neighborhood. This, however, requires vigilance to ensure that it does not happen again. Conflict types and sources in society

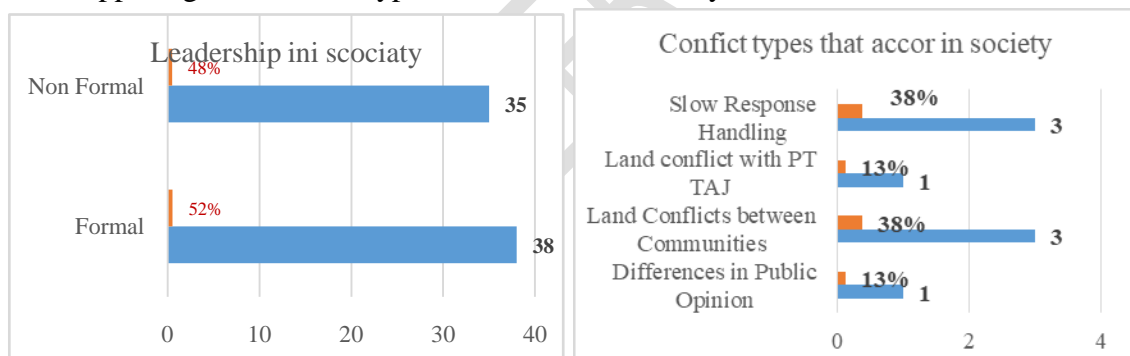


Fig 1. Leaders who are followed in the community's social life and Conflict types and sources in society

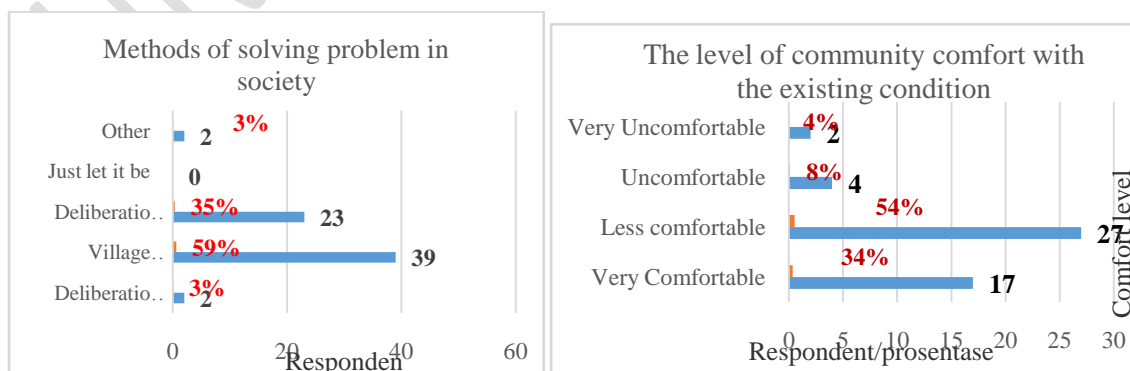


Figure 2. Respondents' opinions related to the type of settlement efforts in the event of a dispute and respondents' opinions related to the comfort of environmental conditions

The Banjar tribe is the majority in South Kalimantan. The Banjar people are devout Muslims.

Religion and local wisdom based on Islam have a considerable influence on the socio-cultural existence of the Banjar people. Because non-formal community leaders (Islamic religious leaders) have a strong influence on the socio-cultural life of the Banjar tribe. The Banjar people are tolerant of immigrants and various ethnic groups, so that difficulties or conflicts that arise in the community are always handled through deliberations to reach a consensus. [20]

Community Perceptions and Attitudes Toward Coal Mining Data

All respondents were aware of PT. Tanjung Alam Jaya's coal mining license extension efforts in their area. Respondents learned of the extension of activity licenses from a variety of sources, with 11 receiving information directly from PT. TAJ (19%). The presence of PT. TAJ in the study region has been in the mining sector for more than ten years, thus information outreach operations are no longer necessary. Socialization activities relating to the Community Development and Empowerment Program (PPM) and other information have become routine in the community and part of daily life. Mining businesses will be approved by the community in the study region if they follow the management guidelines. [21]. The following is a source of information about the existence of PT. TAJ provided by respondents.:

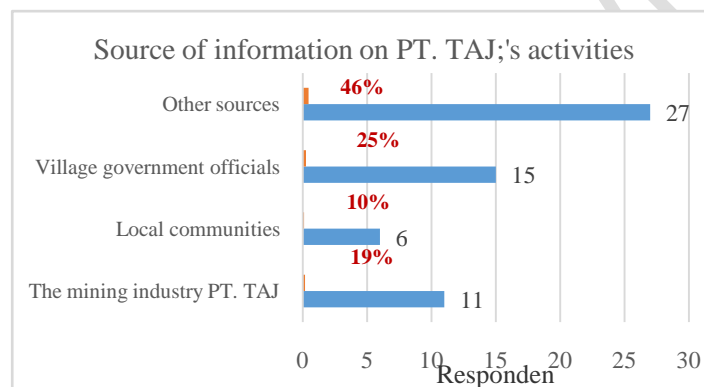


Fig 3. Sources of information related to the mining activities of PT. TAJ

Based on the results of the poll, the community's response to PT. TAJ is as follows: 49% of respondents gave positive comments, 44% gave negative reactions, and the remaining 7% said they did not know. Even though 44% (Fig 4 b) of respondents stated a negative answer, the community's attitude towards the license extension at PT. TAJ is 70% agree, 10% disagree, and 20% don't know. This shows that even though there are quite a number of people who give negative responses to coal mining activities carried out by PT. TAJ, the majority of the community agrees with the changes to the mining plan which will extend the life of the mine. This quite large unfavorable perception was made possible by changes in environmental conditions that occurred during mining activities, and some respondents did not get the significant benefits that were obtained by the respondents.

Local people's negative perceptions of the importance of non-market ecosystem services, the impact of mining on ecosystem services, and their ability to participate in the restoration of degraded land due to mining are anticipated by community participation in determining policy environmental services and participating in restoration activities. [22]

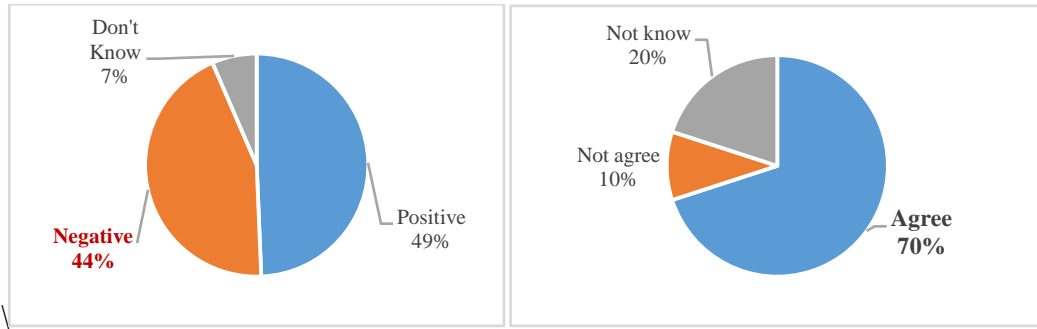


Fig 4. Community perspectives and attitudes concerning PT. TAJ's mining activities

The results of a survey regarding local community satisfaction with job opportunities at PT. TAJ are 26% of respondents have families who are employees or involved in the mining of PT. TAJ, where as many as 10% of workers said they were very satisfied, 58% of workers said they were satisfied, 30% of workers said they were dissatisfied, and 2% of workers said they were very dissatisfied with their work [23]

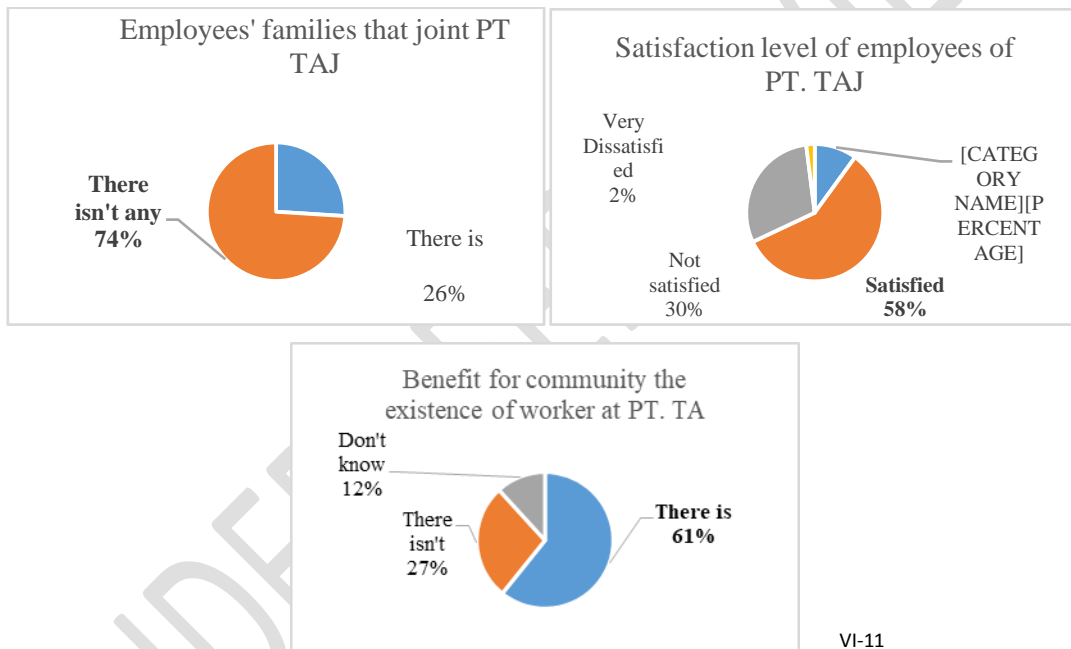


Fig 5. Perceptions of community satisfaction with employment opportunities of PT. TAJ

The survey results regarding respondents' perceptions of environmental impacts due to coal mining activities show that it will cause impacts such as disturbing comfort (80%), disturbing people's income (74%), disturbing aquatic biota (66%), disturbing land biota (56%), affecting quality river water (78%), disturbing soil fertility (62%), disturbing landscapes (70%), causing soil erosion (62%), disturbing blasting vibrations (78%), disturbing blasting vibrations (78%), disturbing blasting vibrations (78%), disturbing blasting vibrations (78%), disturbing Overall, 68% of those polled were bothered, 26% were not, and 6% abstained.

Table 6. Opinions of respondents on the environmental impact of PT. TAJ's coal mining operations (Impact of blasting and closed layer dumping)

Activity	yes	no	don't know
Air temperature	80%	20%	0%
Air quality	64%	36%	0%
As a result of the explosion	78%	22%	0%
Blasting vibration	72%	28%	0%

Soil erosion	62%	38%	0%
Landscaping	70%	30%	0%
Soil fertility	62%	38%	0%
River water quality	78%	22%	0%
Land biota	56%	44%	0%
Aquatic biota	66%	34%	0%
Community income	74%	26%	0%
Disturbing comfort	80%	20%	0%
Trying to reduce distractions	62%	12%	26%
Reducing distractions while mining	34%	6%	60%
Causing a nuisance	80%	20%	0%
Total	68%	26%	6%

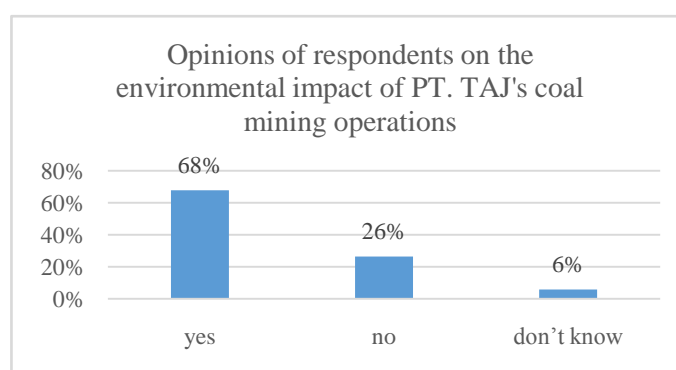


Fig 6. Opinions of respondents on the environmental impact of PT. TAJ's coal mining operations (Impact of blasting and closed layer dumping)

The process of crushing coal to a certain size at the Coal Crusher Plant (CCP) facility is known as coal resizing. According to respondents, changing the size of coal causes health problems (22%), changes in social norms (14%), community diseases (16%), sedimentation (46%), noise (42%), and air quality (52%) .

Table 7. Respondents' perceptions of the environmental impact of coal resizing activities

Impact of coal processing	yes	no
Air quality	52%	48%
Noise	42%	58%
Sedimentation	46%	54%
Societal disease	16%	84%
Changes in social norms	14%	86%
Health problems	22%	78%
Sum Activity	32%	68%

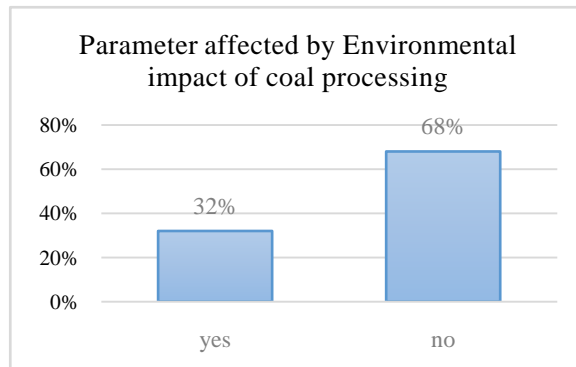


Fig 7. Respondents' perceptions of the environmental impact of coal resizing activities

Coal processing (resize) causes inconvenience to 46% of respondents, while the remaining 54% said it does not cause inconvenience.

Public perception regarding efforts to manage impacts due to mining activities (coal processing) is that 68% of respondents stated that they were not aware of any efforts to reduce disturbances to coal processing activities, while 12% stated that there were no efforts to reduce disturbances to coal processing activities and 20% stated that there were efforts to reduce disturbances to coal processing activities.

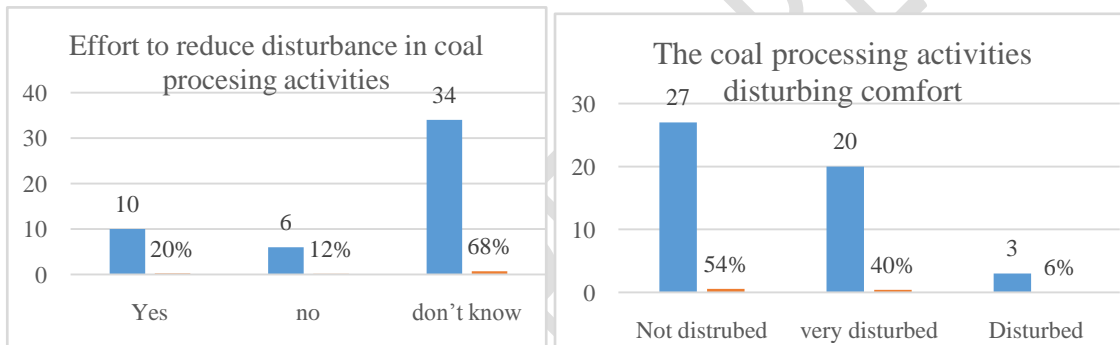


Fig 8. Respondents' opinions regarding comfort disturbances and management efforts that have been carried out during coal resizing activities

Perceptions regarding the impact of coal transportation, based on survey results of respondents that coal transportation activities cause health problems (52%), have a positive impact (54%), disturb public roads (66%), cause noise (66%), and affect air quality (72%).

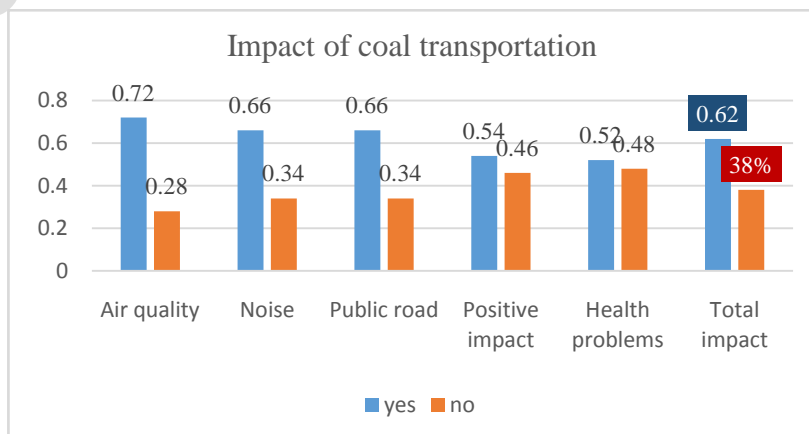


Fig 9. Public perception of coal transportation activities

According to the results of the survey, 10% of respondents stated that coal hauling activities provided many business opportunities for the community, 66% stated that coal hauling activities provided several business opportunities for the community, and 24% stated that there were no business opportunities. Coal hauling operations resulted in a considerable rise in income for 16% of respondents, a little increase in income for 62%, and no increase in income for 22% of respondents..

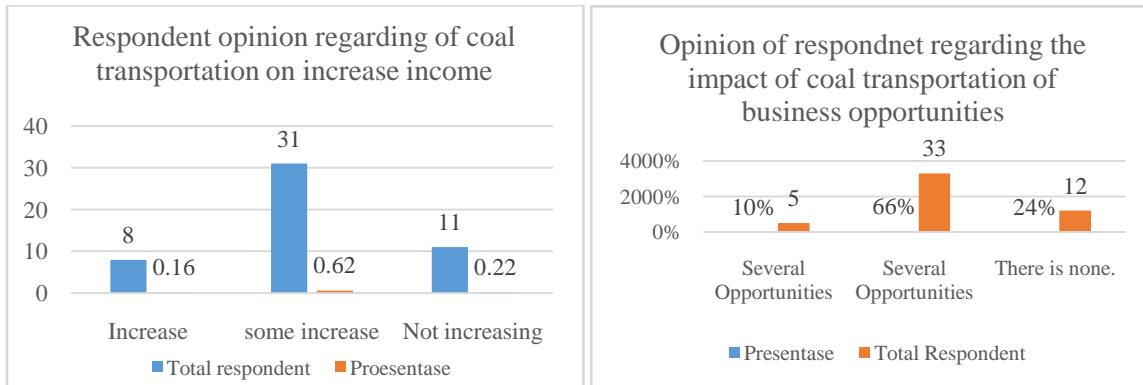


Fig 10. Respondents' opinions related to the positive impact of coal hauling activities on society

According to opinion poll data, 60% of respondents said coal hauling activities caused environmental damage, while the remaining 40% said no and as many as 20% of respondents said there were efforts to reduce disruption from coal hauling activities, 34% said they were unaware of any efforts, and 22% said there was no attempt to reduce the disturbance..

PT. TAJ has conducted an environmental impact analysis, an environmental management plan, and an environmental monitoring plan as mandatory documents that must be followed in order to manage the negative impacts of coal mining; this document serves as a framework for managing emerging issues and should be carried out by involving stakeholders. [24]

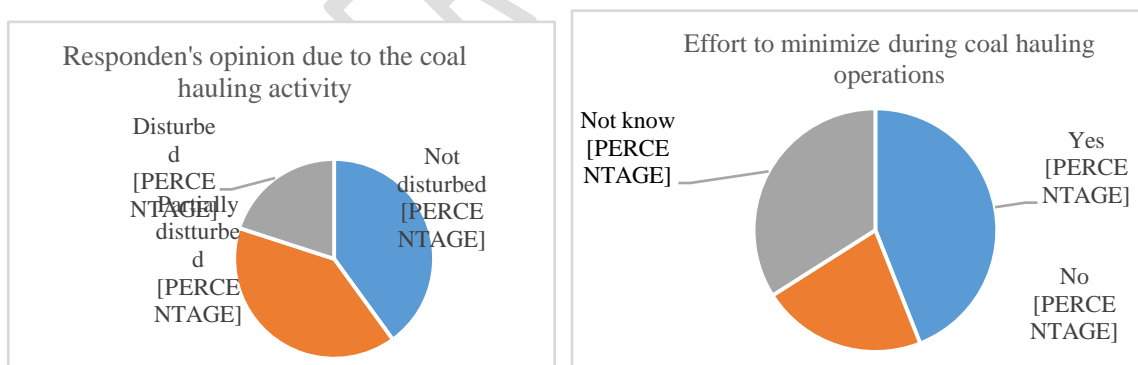


Fig 11. The respondents' opinions are related to the impact of community comfort and management efforts made during the coal transportation process.

According to respondents' opinions of reclamation and revegetation efforts, these activities had an impact on terrestrial and aquatic biota (22%), sedimentation (56%), soil fertility (38%), landscape (52%), soil erosion (80%), and temperature of the air (76%).

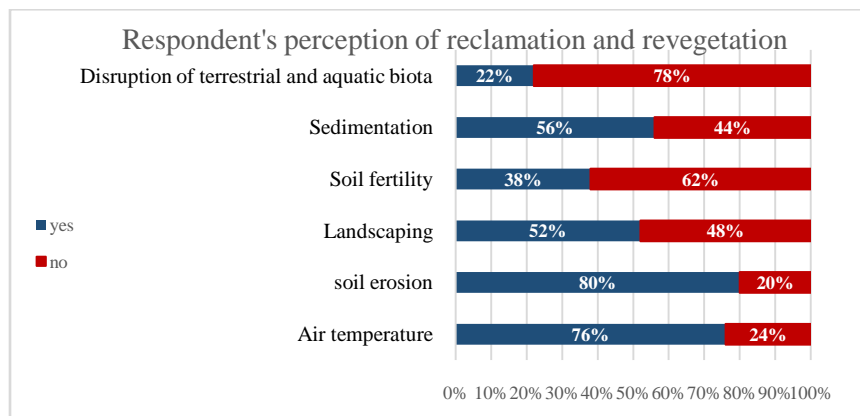
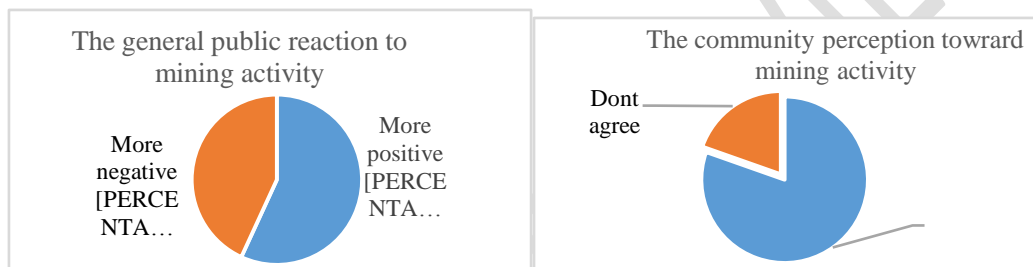


Fig 12. Respondents' perceptions of reclamation and revegetation activities

Public perception of the mining activities of PT. TAJ is that 57% of respondents stated that there were more positives and the remaining 43% stated that there were more negatives, while 80% of respondents stated that they agreed with the mining activities of PT. TAJ and 20% disagree,



.Fig 13. Respondents' opinion regarding the existence of PT. TAJ

The arguments given by respondents who agreed with PT. TAJ's mining activities were that PT. TAJ should consider the environmental impact (25 respondents), raise residents' income (18 respondents), and increase the area's potential (8 respondents). Meanwhile, respondents who disagree disagree because PT. TAJ's mining activities have an impact on the safety of residents' lives and the surrounding environment (5 respondents), respondents' interests have not been accommodated (13 respondents), the community suffers (3 respondents), and other reasons (1 respondent).

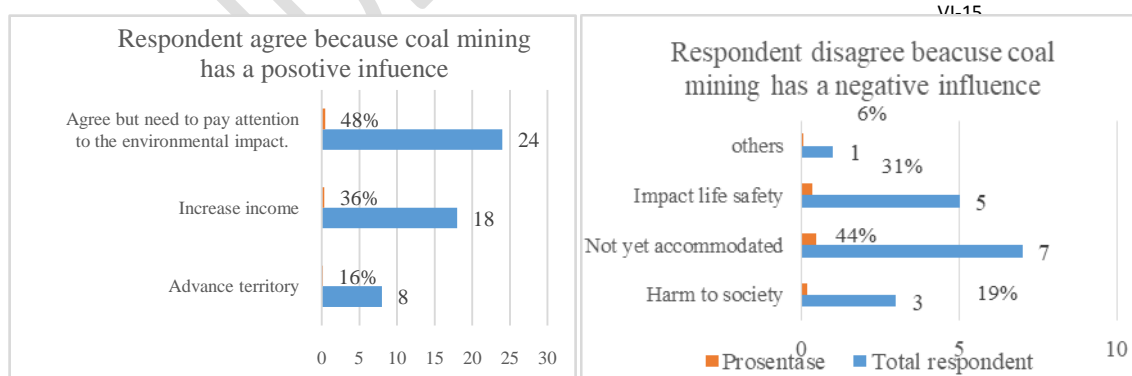


Fig 14. The respondents' attitudes are influenced by the existence of PT. TAJ.*5

The results of a survey of the community, 96% of respondents did not know about PT. TAJ plans to expand production and extend the coal mining period, and only 4% know about PT. TAJ.

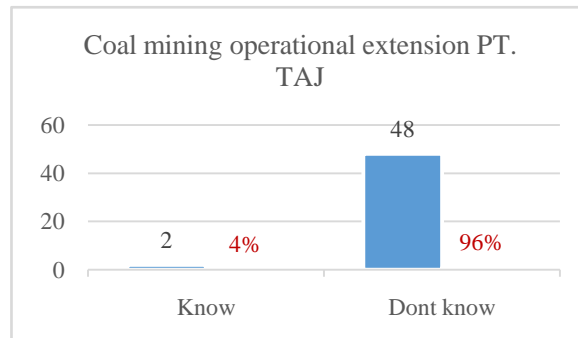


Fig 15. Respondents' knowledge of PT. TAJ's plans to modify production and extend coal mining time.

Respondents' opinions related to the potential environmental impact due to mining changes proposed by PT. TAJ includes general travel disturbance impacts (58%), sedimentation impacts (78%), affecting soil fertility (74%), affecting landscapes (74%), soil erosion impacts (76%), vibration impacts (68%), impact noise (74%), air quality impact (68%), and changes in air temperature (82%).

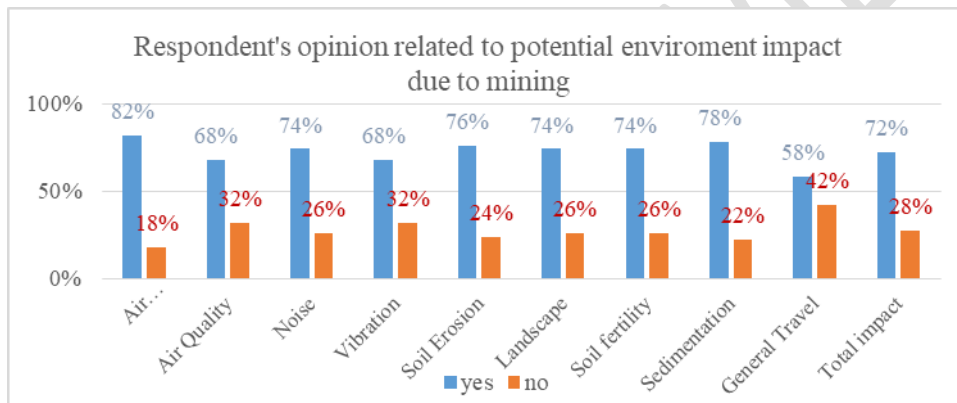


Fig 16. Respondents' opinions related to the potential environmental impact due to mining changes proposed by PT. TAJ

The environmental management approach implemented by PT. TAJ is adjusted to the coal mining business and/or activity plan which is included in the environmental impact analysis criteria that must be fulfilled as mandatory, so that people's attitudes change for the better. Perception will be good if the damage is minimized and the community benefits from coal mining operations [25]. The approach technique used is as follows:

Technological approach is install information signs on either side of the mine's main entrance, Sound the siren in the region where the source of the sound is heard up to a radius of 1 km as a signal of blasting work completion. [26], Perform back filling in the vicinity of mine openings and waste disposal piles, where the land surface is constructed in the shape of bench terraces with a 30° angle, a terrace height of 6 m, and a tillage area width of 30 m, Carry out land reclamation as efficiently as possible in accordance with initial baseline conditions, laying topsoil at least 50 cm thick to give rhizosphere area for plant roots to develop , Planting/revegetating in post-mining areas, areas that are open either due to mining openings or other operational activities, using pioneer species such as glirisidae and other cover crops, using intensive silvicultural methods (the concept of land improvement with fertilization inputs, types of plants, and integrated pest management [27], Reforesting post-mining area with *Centrosema pubes cens*, *Peureraria Javanica*, *Colopogonium munu coides*, and woody species like *acacia*. [28], Integral void management via embankment

restoration, local ecological enhancement by the planting and buffering of plants with a radius of up to 175 meters.[29], Construct non-level intersections between hauling routes and public roads (arterial and collector), .

Socio-economic approach is Conduct community outreach in the mine area, Prioritize the acceptance of local communities as employees, workers, or miners, Using a persuasive approach, including the community, and being proactive in efforts to resolve social issues in the neighborhood, Harmonization of social life between the mine's surrounding communities and PT. Tanjung Alam Jaya, such as participation in invitations to religious events, marking festivals, assisting disaster victims [30]

Institutional approach is collaboration with local sub-district and/or kelurahan governments, as well as community leaders (RW/RT) and/or community forums, Setting up road security posts and providing security personnel along the Km-94 coal transport truck in and out route, Provide financial support for community development programs (community-based development) [31]

Management of Social and Economic Aspects Through Community Development and Empowerment Programs

The community development and empowerment program in the mining area is an example of corporate social responsibility to the local community. The primary goal of community development is to enable the community surrounding the mine to build the economy. [32] Through outreach and program proposals, stakeholders from both the local government and the community are involved in the program's development.

Community development and empowerment efforts were carried out in the following villages: a) Storm Village; b) Maniapun Village; c) Fort Village; d) Mangkauk Village; e) Lumpangi Village; f) Batang Banyu Village; g) Pasar Baru Village; and h) Sungai Lurus Village. i) Hatungun Village

The Minister of Energy and Mineral Resources Decree No. 1824.K/30/MEM/2018 concerning Guidelines for Community Development and Empowerment governs the program's implementation. [33]

VI-17

Community development and empowerment efforts were carried out in the following villages: a) Storm Village; b) Maniapun Village; c) Fort Village; d) Mangkauk Village; e) Lumpangi Village; f) Batang Banyu Village; g) Pasar Baru Village; and h) Sungai Lurus Village. i) Hatungun Village

Education program

The majority of educational facilities in the Banjar and Tapin districts continue to cater to the needs of 9-year basic education, primarily elementary and junior high school facilities. The primary goal of The community development and empowerment program is to promote the role of religion-based educational institutions such as madrasas and Islamic boarding schools in conformity with the Banjar community's religious features. Among the programs that have been implemented are: (1) Integrated Islamic Education Development Program (Madrasah Aliyah and Islamic Boarding Schools); (2) Certification and competency of junior high school/senior high school/equivalent teachers (priority for Madrasah Aliyah); (3) Competency training for educators and education staff; (4) Assistance for educators and education; (5) Collaboration between schools and tutoring institutions; (6) Vocational Training; (7) Apprenticeship; (8) Management Program and Early

Childhood Education Services; and (9) Package A, B and C Study Groups.

Health program

This program aims to expand access to services and raise awareness about healthy living for everyone in order to establish a physically and spiritually healthy community through promotional, preventive, curative, and rehabilitative efforts. The Community Development and Empowerment Program in the realm of health focuses on attempts to raise life expectancy for communities surrounding the mine by providing basic health services and making clean water available to the community, specifically through: (1) The Community-Based Health Business Program includes strengthening Posyandu, Polindes, and the Program for Village Drug Posts and Islamic Boarding School Health Posts; (2) Capacity Building Support for Cadres and Health Workers through collaboration with the district Health Office and other related institutions; and (3) Revitalization of the Program for Provision of Basic Clean Water Facilities through the strengthening of Water User Groups.

Employment Income Level Program

The Community Development and Empowerment Program in the field of improving real income and employment focuses on measures to increase the absorption of local workers in the mining sector and support the creation of new enterprises outside the mining sector. Several programs have been implemented, including: (1) the Local Manpower Development Program; (2) community partnerships involving Village-Owned Enterprises, Cooperatives, and Micro, Small, and Medium Enterprises; (3) the use of local labor in Community Development and Empowerment Programs; and (4) the Entrepreneurship Program.

Economic Independence Program

The Community Development and Empowerment Program in the field of economic self-sufficiency focuses attention on efforts to increase the supporting capacity of the people's economy, the establishment of economic centers or areas based on regional superior products, agricultural productivity and the development of integrated livestock centers. Several programs implemented, namely (1) Development of Micro, Small and Medium Enterprises, Cooperatives and Village-Owned Enterprises; (2) Rural Area Development Program (agropolitan, minapolitan, agrotourism and ecotourism); (3) Local Resource-based Regional Product Development Program Support; (4) Sustainable agriculture program; and (5) Livestock cultivation program (chicken, goat, cow etc.) and processed derivative products.

Socio-cultural Program

The Community Development and Empowerment Program in the socio-cultural and religious fields focuses on efforts to strengthen PT. TAJ's commitment to fostering religion and interfaith harmony, strengthening local culture and wisdom, and integrating disaster management systems in the implementation of The Community Development and Empowerment. Some of the programs implemented include: (1) support for cross-community cooperation; (2) assistance in the provision of worship infrastructure; (3) arts and culture development program; (4) arts and culture festival; (5) support for the implementation of Indonesian Independence day activities and local (regional) activities; (6) disaster prioritization in the implementation of Community Development and Empowerment Program and (7) emergency response assistance and natural disasters (floods, fires, earthquakes, hurricanes, landslides).

Environment

The Community Development and Empowerment Program in the environmental field focuses on attempts to develop a community-based waste management system and deal with post-mining crucial land through a community empowerment strategy. Several programs were developed, including: (1) Environmental Awareness and Positive Behavior; (2) Development of a Community-Based Waste Management System; and (3) Utilization of Post-Mining Land.

Community Institution Establishment Program

The Community Development and Empowerment Program in the field of institutional strengthening focuses on efforts to integrate the social management system of PT. TAJ in a regular mechanism, in which The Community Development and Empowerment Program becomes an integral part of the regional and village development planning and implementation system. Several programs were implemented, including: (1) Alignment of The Community Development and Empowerment Program and Regional and Village Development Plans; (2) Assistance For The Community Development and Empowerment Program; and (3) Advocacy and Networking with professional groups, NGOs, universities.

Infrastructure Program

The Community Development and Empowerment Program in the infrastructure industry focuses on efforts to offer social and economic infrastructure as well as support to the community surrounding the mine. Some of the projects that have been executed include: (1) Community Learning Center Development Support; (2) Support for the Provision of Local Economic Development Infrastructure; and (3) Infrastructure Provision Drinking Water Management System.



Fig 17. Submission of sewing machine support through the Community Development and Empowerment Program (Desa Maniapun 2021 and September 2022)



Fig 18. Handover of Lumpangi Village Koran Kindergarten Building (May 2022)

CONCLUSION

The impacts of coal mining operations and PT. TAJ's exploration permit extension must be addressed holistically/comprehensively, using the Environmental Impact Analysis study approach, which must be approved and validated by the Republic of Indonesia's Ministry of Environment and Forestry. These instructions are legally binding and must be followed.

Noncompliance and violations committed by coal mining exploration companies may result in license revocation and operational suspension, as companies granted exploration permits have been required to conduct environmental impact analysis studies as a condition for extending mining exploration expansion permits in the South Kalimantan area.

The issues that arise, particularly with regard to the perception of negative affects from coal mining activities, must be resolved and become standards for implementing socio-cultural impact resolution in coal mining exploratory operations.

UNDER PEER REVIEW

Table.7. Environmental Management Plan Matrix

No	Impact Management			Management Type			Institution of Environmental Management		
	Environmentally Managed Impact	Impact Source	Indicators of Environmental Management Success	Environmental Management Efforts	Management Location	Management Period	Executor	Supervisor	Report Recipient
A. Geophysics-Chemical Components									
1	Impact from intense vibrations and flying pebbles, as well as the occurrence of transient noise	The activity of removing overburden by means of blasting dan mining activity.	According to Governor of South Kalimantan Regulation Number 53 of 2007, the noise level for residential zones is 55 dB and 70 dB for industrial areas. The shock vibration level of less than 10 mm/s relates to Minister of Environment Decree No.49 of 1996 on Vibration Level Standards, Appendix 1. The positive predictive value (ppv) is adjusted to SNI 7571-2010.	Outreach to the surrounding environment, imparting blasting SOPs to local residents displaying red/green flags in prominent places, Installing informative signs along the main mine entrance, Putting up warning signs, Sirens that sound within a one-kilometer radius of the sound source, with the term "safe distance" referring to the Minister of Energy and Mineral Resources Decree 1827.	Settlements, Mines, Hauling Roads, Stockpile..	During mining operations	PT. Tanjung Alam Jaya	Ministry of Environment and Forestry South Kalimantan Environmental Service Banjar Regency Environmental Service Tapin Regency Ministry of Energy and Mineral Resources of South Kalimantan Province	Ministry of Environment and Forestry South Kalimantan Environmental Service Banjar Regency Environmental Service Tapin Regency Ministry of Energy and Mineral Resources of South Kalimantan Province
2	Changes in the level of soil fertility.	Land clearance, topsoil stripping, mechanical excavation of overburden, blasting destruction of overburden, overburden stockpiling, coal mining, and reclamation and revegetation activities	Mining management that adheres to the mining sequence can uncover the impact of declining soil fertility.	Backfill in the region of mine openings and waste dump heaps where the land surface is structured in the shape of bench terraces with a 30° angle, a 6 m terrace height, and 30 m tillage area width. Planting <i>Centrosema pubes cens</i> , <i>Peureraria Javanica</i> , <i>Colopogonium munu coides</i> , and woody plants like <i>acacia mangium</i> on the land.	Mine location. Location of waste dump areas.	During mining operations	PT. Tanjung Alam Jaya	Ministry of Environment and Forestry South Kalimantan Environmental Service Banjar Regency Environmental Service Tapin Regency Ministry of Energy and Mineral Resources of South Kalimantan Province	Ministry of Environment and Forestry South Kalimantan Environmental Service Banjar Regency Environmental Service Tapin Regency Ministry of Energy and Mineral Resources of South Kalimantan Province

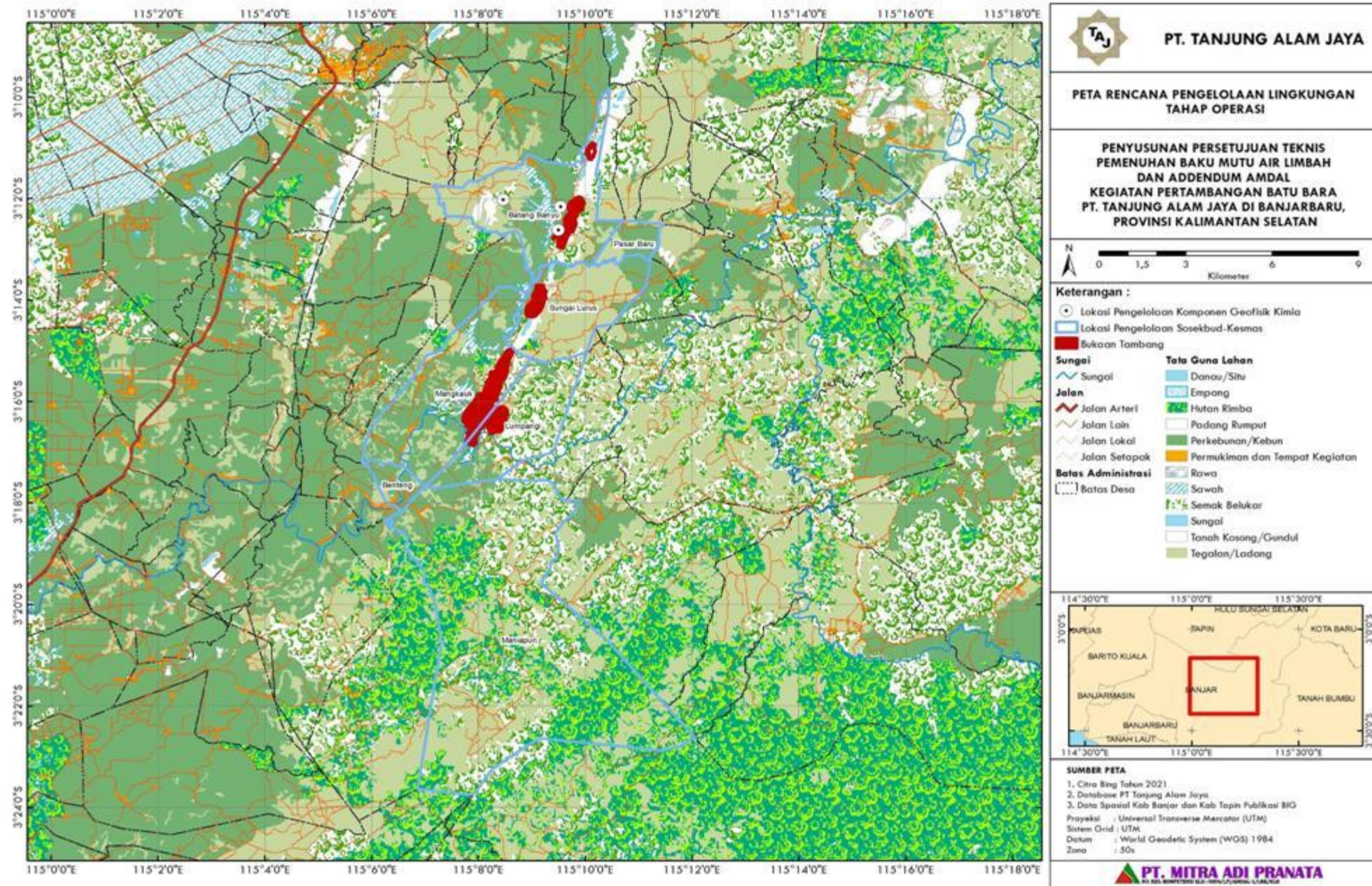
		Initial Reclamation and Revegetation.	Post-mining reclamation and revegetation activities can restore soil fertility, referring to the standard criteria of the soil research center	Land reclamation should be carried out as efficiently as possible in accordance with the initial baseline conditions, with topsoil at least 50 cm thick to enable rhizosphere area for plant roots to develop. Planting/revegetation in post-mining areas, open areas due to mine openings or operational activities, and others, using pioneer species such as glirisidae and other cover crops, using intensive silvicultural methods (the concept of land improvement with fertilization inputs, plant species improvement, and integrated pest management. Making terraces/buildings for soil erosion management, both physically-mechanically with terracing and biologically by placing plants on the newly created level, at least 3 kg of organic matter should be placed in each planting hole.	Manage location in reclamation and revegetation areas.	During reclamation and revegetation activities until post-mining.	PT. Tanjung Alam Jaya	Ministry of Environment and Forestry Provincial Environmental Service. South Kalimantan Department of the Environment District. Banjar Department of the Environment District. Tapin Department of Energy and Mineral Resources Prov. South Kalimantan	Ministry of Environment and Forestry Provincial Environmental Service. South Kalimantan Department of the Environment District. Banjar Department of the Environment District. Tapin Department of Energy and Mineral Resources Prov. South Kalimantan
3	General travel disruption due to coal mining activities	Coal is transported from the mining stockpile location to the processing location and to the port via the PT Hasnur Jaya Utama road and the Rantau Martapura Provincial road.	The intersection of hauling roads with public roads (arterial and collector) is in the form of non-level intersections	Putting up traffic signs along the path of coal transport vehicles' entry and exit. Establishing road security posts and providing security personnel along the Km-94 coal transport truck in and out route. Provide non-level intersections between hauling routes and public highways (arterial and collector). Limiting carried goods with weight distribution per axle based on road class.	At the crossing in and out of PT Tanjung Alam Jaya's coal transport vehicle.	During mining operations	PT. Tanjung Alam Jaya	Ministry of Environment and Forestry South Kalimantan Department of the Environment District. Banjar Department of the Environment District. Tapin Department of Energy and Mineral Resources South Kalimantan Province	Ministry of Environment and Forestry Provincial South Kalimantan Department of the Environment District. Banjar Department of the Environment District. Tapin Department of Energy and Mineral Resources Prov. South Kalimantan

<p>Changes in people's income as a result of their participation in mining activities like PT Tanjung Alam Jaya workers or employees. Increased community capital as a result of the various effects that have occurred.</p>	<p>Involvement of the community surrounding the mine, beginning with worker recruiting and continuing through all stages of mining operations.</p>	<p>Management of the source of the impact can shift a negative perception of the activity to a neutral or positive perspective of the community on the prospect of socioeconomic progress due to community empowerment. Absorption of local labor, particularly in the villages of the research area, at 60%.</p>	<p>Undertake local communities to be accepted as employees, workers or miners. Adopt a persuasive approach, community engagement and be proactive. Harmonization of social life between communities around the mine and PT. Tanjung Alam Jaya such as participating in inviting religious activities, commemorating holidays, providing assistance to disaster victims and so on. Support community development programs (community-based development).</p>	<p>Mangkauk, Sungai Lurus Village, Lumpangi Village, Batang Banyu Village, Maniapun Village, Lada Village, Market Village Baru and Bentang Village, Kec. Pengaron and Kec. Prosperous Connection</p>	<p>During mine operations</p>	<p>PT. Tanjung Alam Jaya</p>	<p>Ministry of Environment and Forestry Provincial Environmental Service. South Kalimantan Department of the Environment District. Banjar Department of the Environment District. Tapin Department of Energy and Mineral Resources Prov. South Kalimantan</p>	<p>Ministry of Environment and Forestry Provincial Environmental Service. South Kalimantan Department of the Environment District. Banjar Department of the Environment District. Tapin Department of Energy and Mineral Resources Prov. South Kalimantan</p>
<p>Increased regional development capital in general from rural development in particular.</p>	<p>There are royalties, taxes, fees, and other charges, particularly those associated with mining and coal transportation.</p>	<p>Achievement of corporation programs that connect with local government as a form of community social responsibility. In keeping with the operating operations, there is an increase in community income. Local workers, particularly those from the study area villages, were absorbed at a rate of 60%.</p>	<p>Carry out commitments in compliance with applicable regulations, particularly those pertaining to royalties, taxes, and levies. Supporting reform programs created by the local community in the context, substance, and manner of community empowerment transparency development.</p>	<p>Mangkauk Village, Sungai Lumpangi Village, Batang Banyu Village, Maniapun Village, Lada Village, Pasar Baru Village and Bentang Village, Pengaron Subdistrict and Kontak Makmur District</p>	<p>During mining operations</p>	<p>PT. Tanjung Alam Jaya</p>	<p>Ministry of Environment and Forestry Provincial Environmental Service. South Kalimantan Department of the Environment District. Banjar Department of the Environment District. Tapin Department of Energy and Mineral Resources Prov. South Kalimantan</p>	<p>Ministry of Environment and Forestry Provincial Environmental Service. South Kalimantan Department of the Environment District. Banjar Department of the Environment District. Tapin Department of Energy and Mineral Resources Prov. South Kalimantan</p>

2	Changes in public perception of coal mines' existence.	It is an indirect (derived) influence, resulting from societal envy and the emergence of changes in environmental geophysical-chemical conditions during coal mining activities.	Maintaining positive community attitudes and perceptions despite the presence of coal mining operations by managing impacts to reduce negative consequences and increase positive impacts. Attitudes and public views of PT. Tanjung Alam Jaya's presence are regarded to be good if the attitude does not agree 20% and agrees 61%.	Avoid pollution, including air and river water contamination, and always be consistent in your environmental management. Improving the community's socialization to diverse provisions and job styles. PT. Tanjung Alam Jaya's community development program activities (community development mechanism) would be improved further.	Desa Mangkauk, Desa Sungai Lurus, Desa Lumpangi, Desa Batang Banyu, Desa Maniapun, Desa Lada, Desa Pasar Baru, Desa Bentang, Kec. Pengaron dan Kec. Sambung Makmur	During mining operations	PT. Tanjung Alam Jaya	Ministry of Environment and Forestry Provincial Environmental Service. South Kalimantan Department of the Environment District. Banjar Department of the Environment District. Tapin Department of Energy and Mineral Resources Prov. South Kalimantan	Ministry of Environment and Forestry Provincial Environmental Service. South Kalimantan Department of the Environment District. Banjar Department of the Environment District. Tapin Department of Energy and Mineral Resources Prov. South Kalimantan
Post-operative stage									
2		Termination of employment at post-mining	Guided by a layoff program developed in accordance with normative rules and various applicable laws and regulations.	Create a layoff program based on numerous norms that apply to both the layoff system and severance compensation settlement. In addition to developing a training program.	Mangkauk Village, Sungai Lurus Village, Lumpangi Village, Batang Banyu Village, Maniapun Village, Lada Village, Market Village Baru and Bentang Village, Kec. Pengaron and Kec. Sambung makmur	Postoperative stage	PT. Tanjung Alam Jaya	Ministry of Environment and Forestry Provincial Environmental Service. South Kalimantan Department of the Environment District. Banjar Department of the Environment District. Tapin Department of Energy and Mineral Resources Prov. South Kalimantan	Ministry of Environment and Forestry Provincial Environmental Service. South Kalimantan Department of the Environment District. Banjar Department of the Environment District. Tapin Department of Energy and Mineral Resources Prov. South Kalimantan

1	Changes in public perception Changes in air temperature	Land clearing activities, Landfilling cover as well as reclamation and revegetation	The ambient temperature is around 32°C. and The air temperature in the mine opening (Pit), OPD and IPD is not more than 40°C (Novita, 2007)	Limit land clearing or cleared land as much as feasible. Reclamation and revegetation must be completed as soon as feasible in accordance with the stages of mining activities (as outlined in the mine sequence plan). Conduct additional technical-economic research on the preservation of current coal reserves. According to the results of PT. TAJ, post-mining is carried out through exploiting existing lands for industrial, tourism, agriculture/plantation, animal husbandry, and fishing activities.	The site of the mine opening, which consists of 5 Pit.	PT. Selama Operasi Penambangan	Tanjung Alam Jaya	Ministry of Environment and Forestry Provincial Environmental Service. South Kalimantan Department of the Environment District. Banjar Department of the Environment District. Tapin	Ministry of Environment and Forestry Provincial Environmental Service. South Kalimantan Department of the Environment District. Banjar Department of the Environment District. Tapin Department of Energy and Mineral Resources Prov. South Kalimantan
2	Decreased air quality	Land clearing, topsoil removal, overburden excavation, and demolition Blasting, overburden dumping, coal mining, coal processing, and coal hauling all contribute to verburdening.	Dust particles <230 µg/Nm ³ , sulfur oxide (SO ₂) <900 µg/Nm ³ , nitrogen oxides (NO ₂) <200 µg/Nm ³ , carbon monoxide (CO) <20,000 µg/Nm ³ . In accordance with Government Regulation Number 22 of 2021 concerning the Implementation of Environmental Protection and Management, Appendix 2	Slow down the speed of transport vehicles when going through residential zones, to 60 km/h. Close the coal truck body's contents tightly. watering the haul road in the dry season. Planting trees on both sides of the road, especially in the nearest village.	Special coal transport routes, particularly roads near settlements. In the vicinity of the settlement residents and employee camps.	During Mining Operations	Tanjung Alam Jaya	Department of the Environment District. Banjar Department of the Environment District. Tapin Department of Energy and Mineral Resources Prov. South Kalimantan	Department of the Environment District. Banjar Department of the Environment District. Tapin Department of Energy and Mineral Resources Prov. South Kalimantan

2	Noise increase	Land clearing, topsoil stripping, mechanical excavation of overburden, demolition of overburden by blasting, stockpiling of overburden, coal mining, coal processing and coal hauling.	Day-night noise level (LSM) for residential areas is 55 dB and industrial areas is 70 dB with reference to South Kalimantan Governor Regulation Number 53 of 2007.	Maintain heavy equipment and mining facilities. Planting and maintaining trees as a noise barrier around access road areas next to settlements.	mine opening location, Stockpiles and Hailing Road	During Mining Operations Tanjung Alam Jaya	PT.Tanjung Alam Jaya	Department of the Environment District. Banjar Department of the Environment District. Tapin Department of Energy and Mineral Resources Prov. South Kalimantan	Department of the Environment District. Banjar Department of the Environment District. Tapin Department of Energy and Mineral Resources Prov. South Kalimantan
3	There is an increase in the rate of soil erosion, especially during rainfall.	Land clearing, topsoil stripping, mechanical excavation of overburden,	Achievement of prevention and mitigation of negative impacts changes in land use that will cause erosion.	Provide ditches or drains at the location of overburden stockpiling at the out-pit that flows to the chopsticks. Provides a mine draining method with close system method	Mine openings that have been back filled. Waste dump areaArea	During Mining Operations Tanjung Alam Jaya	PT.Tanjung Alam Jaya	Ministry of Environment and Forestry Department of the Environment Province. South Kalimantan	Ministry of Environment and Forestry Department of the Environment Province. South Kalimantan
		demolition of overburden by blasting, stockpiling of overburden, coal mining, as well as reclamation and revegetation activities	Using a tight system to ensure that no erosional material leaves the project site.	With the use of watering. Perform reclamation of ex-mining land: Back Filling, ground level arrangement, Spread of topsoil. Revegetation of reclaimed land. Plant ground cover crops (LCC). Rubber plant nursery.	reclamation and revegetation	During Mining Operations Tanjung Alam Jaya	PT.Tanjung Alam Jaya	Department of the Environment District. Banjar Department of the Environment District. Tapin Department of Energy and Mineral Resources Prov. South Kalimantan	Department of the Environment District. Banjar Department of the Environment District. Tapin Department of Energy and Mineral Resources Prov. South Kalimantan



Map 2. Environmental Management Plan Map

DATA AVAILABILITY

All relevant data has been built with supporting file information. This research will assist researchers in identifying critical areas related to The Public Perception of The Existence of Coal Mines in South Kalimantan Province Indonesia

CONSENT

As per international standard or university standard, respondents' written consent has been collected and preserved by the author(s).

REFERENCE

1. Suwitri S, Sosilowati E, Purnaweni H. Supporting and restricting factors of corporate social responsibility (csr) program of policy implementation at the coal mining company in Lahat District. *Eur J Econ Manag Sci.* 2019;(3):39–48.
2. Husinsyah H, Mahyudi F, Hasiani Y. Study of Social Return of Investment (SROI) and Reclamation of CSR Program of Coal Mining Company in South Kalimantan Province Indonesia. *Int J Sci Technol Manag.* 2023;4(3):544–52.
3. Nirboyo AJ. Potensi Korupsi Dalam Perizinan Lingkungan Melalui Sistem Online Single Submission Pasca Peraturan Pemerintah Nomor 5 Tahun 2021 Tentang Penyelenggaraan Perizinan Berusaha Berbasis Risiko. *Jatiswara.* 2021;36(2):219–28.
4. Turyahabwe R, Asaba J, Mulabbi A, Osuna C. Environmental and Socio-economic Impact Assessment of Stone Quarrying in Tororo District, Eastern Uganda. *East African J Environ Nat Resour.* 2021;4(1):1–14.
5. Kumar M. Social, economic, and environmental impacts of renewable energy resources. *Wind Sol hybrid Renew energy Syst.* 2020;1.
6. Mohsin M, Zhu Q, Naseem S, Sarfraz M, Ivascu L. Mining industry impact on environmental sustainability, economic growth, social interaction, and public health: an application of semi-quantitative mathematical approach. *Processes.* 2021;9(6):972.
7. Brian R, Soeswoyo DM, Sudirja J, Arafah W, Ingkadijaya R, Brahmantyo H, et al. Community enthusiasm in developing Ombilin coal-mining industrial heritage in Sawahlunto, West Sumatera. *Int J Appl Sci Tour Events.* 2023;7(1):37–45.
8. Selo P, Ngole-Jeme V. Community perceptions on environmental and social impacts of mining in Limpopo South Africa and the implications on corporate social responsibility. *J Integr Environ Sci.* 2022;19(1):189–207.
9. Leonard L. Traditional leadership, community participation and mining development in South Africa: The case of Fuleni, Saint Lucia, KwaZulu-Natal. *Land use policy.* 2019;86:290–8.
10. Setiawan IE, Zhang Z, Corder G, Matsubae K. Evaluation of environmental and

- economic benefits of land reclamation in the Indonesian coal mining industry. *Resources*. 2021;10(6):60.
11. Bloomfield J, Fisher MJ. Quantitative research design. *J Australas Rehabil Nurses Assoc*. 2019;22(2):27–30.
 12. Ellen S. Slovin's Formula Sampling Techniques, *Sciencing*, available online at. 2020;
 13. Mufidah N. Tinjauan Alih Fungsi Lahan Pertanian Pangan Berkelanjutan Di Kabupaten Banjar. Universitas Islam Kalimantan MAB; 2021.
 14. Sutedjo S. Efektivitas tata kelola pertambangan batubara di Kabupaten Tapin. Universitas Gadjah Mada; 2006.
 15. Tapin BPSK. Kabupaten Tapin Dalam Angka 2018. Badan Pus Stat Kabupaten Tapin. 2018;
 16. Banjar BPSK. Kabupaten Banjar dalam Angka 2022. Martapura Badan Pus Stat Kabupaten Banjar. 2022;
 17. Mwakesi I, Wahome R, Ichang'i D. Mining impact on communities' livelihoods: A case study of Taita Taveta County, Kenya. *AIMS Environ Sci*. 2020;7(3):286–302.
 18. Djuniarsono R. Legal Analysis Of Corporate CSR Implementation For Community Welfare. In: *Proceeding International Conference on Law, Economy, Social and Sharia (ICLESS)*. 2022. p. 49–56.
 19. Halkos GE, Nomikos SN. Reviewing the status of corporate social responsibility (CSR) legal framework. *Manag Environ Qual An Int J*. 2021;32(4):700–16.
 20. Suprpto S, Nurulita L, Falmelia RA. Characteristics of dispute resolution in wetland environment: Integration between environmental, cultural and community empowerment aspects. *Int J Res Bus Soc Sci*. 2021;10(4):349–54.
 21. Esteves AM, Barclay M-A. New approaches to evaluating the performance of corporate–community partnerships: A case study from the minerals sector. *J Bus ethics*. 2011;103:189–202.
 22. Obeng EA, Oduro KA, Obiri BD, Abukari H, Guuroh RT, Djagbletey GD, et al. Impact of illegal mining activities on forest ecosystem services: local communities' attitudes and willingness to participate in restoration activities in Ghana. *Heliyon*. 2019;5(10):e02617.
 23. Sungkhawan J, Mujtaba BG, Swaidan Z, Kaweevisultrakul T. Intrapreneurial workplaces and job satisfaction: The case of Thai employees. *J Appl Bus Res*. 2012;28(4):527–42.
 24. Sarupria M, Manjare SD, Girap M. Environmental impact assessment studies for mining area in Goa, India, using the new approach. *Environ Monit Assess*. 2019;191:1–17.

25. Hernanda T. Legal analysis on amdal as an environmental protection document. *Leg Standing J Ilmu Huk.* 2020;4(2):108–15.
26. Mathe NC. The impact of quarrying activities and communal perceptions towards the environmental and animal welfare in the Ashburton community located in KZN Province, South Africa. 2022.
27. Pratiwi, Narendra BH, Siregar CA, Turjaman M, Hidayat A, Rachmat HH, et al. Managing and reforesting degraded post-mining landscape in Indonesia: A Review. *Land.* 2021;10(6):658.
28. Iskandar I, Suryaningtyas DT, Baskoro DPT, Budi SW, Gozali I, Suryanto A, et al. Revegetation as a driver of chemical and physical soil property changes in a post-mining landscape of East Kalimantan: A chronosequence study. *Catena.* 2022;215:106355.
29. Aoki-Gonçalves F, Pena JC, Toledo-Aceves T, MacGregor-Fors I. Urban epiphytes: Bromeliad diversity in a green cover gradient across a Neotropical streetscape. *Urban For Urban Green.* 2023;83:127901.
30. Smith JM. *Extracting accountability: Engineers and corporate social responsibility.* Mit Press; 2021.
31. Sandham LA, Chabalala JJ, Spaling HH. Participatory rural appraisal approaches for public participation in EIA: Lessons from South Africa. *Land.* 2019;8(10):150.
32. Sufrianto ESM, Wahyuningsih YM, Noor I. Coal Mining Closure Compliance Analysis at Banjar Regency, South Kalimantan, Indonesia. 2021;
33. Amin H, Fachruddin S. Regulation Model of Southeast Sulawesi Provincial Government on Community Empowerment and Development Through Corporate Social and Responsibility (CSR) in Mining Sector. *Int J Qual Res.* 2022;1(3):164–9.