

## IMPACT OF WEATHER FACTORS ON MAJOR INSECT PEST OF BRINJAL (*Solanum melongena*) AT RAISEN DISTRICT OF MADHYA PRADESH

### Abstract

Finding of the investigation on “Impact of weather factors on major insect pest of brinjal (*Solanum melongena*) at Raisen district of Madhya Pradesh” was conducted at Agriculture Research Farm, Faculty of Agriculture, Rabindranath Tagore University, Raisen, M.P. during the Rabi season of 2020-21 and 2021-22 have been presented below: A total of six insect pest species like *A.gossypii* (Glover), *A. biguttula biguttula* (Ishida), *B .tabaci* (Gennadius), *N. viridula* (Linnaeus), *E. vigintioctopunctata* Fabricius and *L. orbonalis* (Guenee) and were recorded from brinjal crop during study period 2020-21 and 2021-22.

**Key Word:** Weather factor, Aphid, Jassid, Whitefly and Fruit borer

### Introduction

India's diverse climate ensures a plentiful supply of fruits and vegetables. India is the second-largest producer of vegetables in the world, behind China. India produced 21390 metric tonnes of vegetables on 1475 million acres in 2020–21, according to the Ministry of Agriculture and Farmers Welfare. India generated 13154 metric tonnes of brinjal from 758 million hectares in 2020–21. Many people refer to brinjal as the "King of Vegetables." It is a nutrient-rich food with a high fibre content and few calories. It thus lowers the risk of heart disease and regulates blood sugar levels (Gopalan *et al.*, 2007). Brinjal crop highly affected by different insect pest. Different biotic and abiotic elements control the agro-ecosystem that produces crops. For instance, due to biotic stressors, insect pests attack the crop from the nursery stage till harvest, greatly reducing the production of brinjal. A brinjal crop's quantitative and qualitative losses are heavily influenced by insect pests. More than 70 insect pests are attacking brinjal (Bose *et al.*, 2020). Jassids (*Amrasca biguttula biguttula*), Aphids (*Aphis gossypii*), Whitefly (*Bemisia tabaci*), leaf roller (*Eublemma olivaceae*), shoot and fruit borer (*Leucinodes orbonalis*), epilachna beetle (*Epilachna vigintioctopunctata*), and leaf webber (*Psara bipunctalis*). Brinjal shoot and fruit borer (*L. orbonalis*) were recorded as significant brinjal pests (Gangwar and Singh, 2014; Soren *et al.*, 2020). We can efficiently manage those using insecticides with judicious doses.

**Comment [F1]:** Please set abbreviation first subsequently use the same abbreviation throughout the manuscript.

**Comment [F2]:** Reference Plz

. Among the all insect pest sucking pest create the hug loss of brinjal crop. We are surviving under the natural system and natural system also includes the weather factors. All the component of weather influences the active and passive activity of insect pest. Aphids, jassids, whiteflies, and lacewing bugs are ubiquitous. So often, these insects are seen on the plant's leaves, especially the delicate portions. When they suck the cell sap from leaves and the tender portions of plants, they induce yellowing, distortion, withering, and eventually drying of the affected areas. Additionally, sucking insects act as disease vectors, such as jassids that consume tiny leaves and aphids and whiteflies that cause sooty mold on brinjal.

Comment [F3]: Reference plz

Shoot and fruit borer *Leucinodes orbonalis* Guenee is one of the most destructive pests of Brinjal in India. *Leucinodes orbonalis* Guenee generally depends on brinjal but sometimes turns towards other solanaceous field crops and maybe on wild hosts. Here we are studying the “Impact of weather factors on major insect pest of brinjal (*Solanum melongena*) at Raisen district of M.P.

Comment [F4]: Reference plz

#### Materials and Methods:

The current investigation, which is, “Impact of weather factors on major insect pest of brinjal (*Solanum melongena*) at Raisen, district of M.P. was carried out in the experimental field Agriculture Research Farm, Faculty of Agriculture, Rabindranath Tagore University, Raisen (M.P.) during *Rabi* 2020-21 and 2021-22. Only control plots were used for observation, and 10 randomly chosen plants were chosen for observation twice during a typical week, beginning with the first appearance of the pest and ending with the crop's availability or maturity. At the same time, weather data as per the standard meteorological week (SMW) were recorded. The influence of different meteorological parameters on major insect pest populations was studied by the graphical superimposition technique. Aphid (*Aphis gossypii*) Nymph and adult *A. gossypii* observations were made on two leaves from the upper, middle, and lower /plant canopy, infestations were recorded on 10 randomly selected plants. Jassid (*Amrasca biguttula biguttula*) Nymph and adult *A. biguttula biguttula* observations were made on two leaves from the upper, middle, and lower /plant canopy, infestations were recorded on 10 randomly selected plants. Whitefly (*Bemisia tabaci*) Nymph and adult *B. tabaci* observations were made on two leaves from the upper, middle, and lower /plant canopy, infestations were recorded on 10 randomly selected plants. Green Sting bug (*Nazara viridulla*) -Nymph and adult of *Nazara viridulla* observation were made on per plant. Shoot and fruit borer infestations were recorded on 10 randomly selected plants, similarly, fruit infestation by *L. orbonalis* was judged by counting healthy fruits and fruits damaged by shoot and fruit borer on 10 randomly selected plants. After each observation, damaged fruits were removed. Shoot

Comment [F5]: Please insert longitudes and latitude coordinates od location.

infestation observations were noted. Soon after becoming aware of the *L. orbonalis* infestation in the shoots and the shoot and fruit borer. By counting healthy plants and plants with shoots infested by the shoot and fruit borer on 10 randomly chosen plants from five different sites, the shoot infestation was determined. Damaged shoots were taken out after each examination. Similarly, fruit infestation by *L. orbonalis* was judged by counting healthy fruits and fruits damaged by shoot and fruit borer on 10 randomly selected plants. The percent fruit borer infestation was computed as follows: five from different sites. After each observation, damaged fruits were removed.

$$\% \text{ shoot / fruit infestation} = \frac{\text{Number of shoots / fruits damaged}}{\text{Total number of shoots / fruits observed}} \times 100$$

#### **Result:**

The minimum aphid population was recorded in the 25<sup>th</sup> standard week (SMW) during 2020-21 and 22<sup>nd</sup> SMW during 2021-22, along with the peak population noticed at the 5<sup>th</sup> SMW during 2020-21 and 6<sup>th</sup> SMW during 2021-22. It contributed 44.1% and 40.6% to the total population during 2020-21 and 2021-22, respectively. The maximum population of whitefly was recorded from 14<sup>th</sup> SMW and 16<sup>th</sup> SMW during 2020-21 and 2021-22. It contributed 19.2% and 22.7% to the total population during 2020-21 and 2021-22, respectively. The jassid was attacked on the crop plant during vegetative stage and the peak population was recorded from 12<sup>th</sup> SMW and 16<sup>th</sup> SMW during study period. It contributed 22.2% and 17.7% to the total population during 2020-21 and 2021-22, respectively. The peak activity of green stink bug was recorded in March month during the both the years. It contributed 1.1% and 1.8% to the total population during 2020-21 and 2021-22, respectively. The hadda beetle population was initiated during, vegetative, flowering and fruiting stages of brinjal crop during both the years. The peak population was recorded on 11<sup>th</sup> SMW with 5.1 adults /plant/week during 2020-21 and 4.8 adults /plant/week at 13<sup>th</sup> SMW during 2021-22. It contributed 44.1% and 40.6% to the total population during 2020-21 and 2021-22, respectively. The maximum shoot infestation was recorded from February month. The maximum fruit infestation activity of shoot and fruit borer was recorded at 9<sup>th</sup> SMW during first year. The richest fruit infestation (56.4%) was recorded on 18<sup>th</sup> SMW during second year. There was a significant negative correlation between the aphid population and the

temperature, relative humidity (RH), and rainfall in first year. There was a negative correlation between maximum temperature, maximum relative humidity, and rainfall in second year. *A. biguttula biguttula* significant negative correlation was calculated between the *B. tobaci* population and abiotic factors such as minimum temperature, wind speed, and rainfall. In contrast, a significant positive correlation was found for maximum temperature A population found a non-significant positive correlation with maximum temperature and a negative with minimum temperature, wind speed, and rainfall in the first year. The green stink bug population correlation was non-significant negative with maximum temperature, wind speed & rainfall during the stud. The *E. vigintiocto punctata* population was founded significant negative correlation with minimum temperature, maximum & minimum RH and rainfall during both the years except remaining factors. The correlation between shoot infestation and abiotic factors was calculated and founded that non-significant negative with maximum temperature during both the years. The shoot infestation was found significant negative correlation with minimum temperature, maximum & minimum RH, wind speed and rainfall.

#### **Discussion:**

Aphids first appeared at the vegetative stage of the crop at 43<sup>rd</sup> SMW during 2020-21 and 44<sup>th</sup> SMW during 2021-22. A peak aphid population was recorded on 5<sup>th</sup> and 6<sup>th</sup> SMW during 2020-21 and 2021-22, respectively. The present findings are in line with Rashid *et al.* (2013) observed a peak population of aphid (91.8 aphids/5 leaves/week) in the last week of February (Shakeel *et al.*, 2014).

After first appearance of whitefly population peak was recorded from 14<sup>th</sup> SMW with 12.3 whiteflies/plant/week during 2020-21 and on 16<sup>th</sup> SMW with 8.9 whiteflies/plant/week during 2021-22. The finding is supported by funding of Deole (2015) who founded maximum population activity of whitefly was recorded in the began first week of April with mean density of 6.33 whiteflies/plant/week.

The *A. biguttula biguttula* infestation was initiated during vegetative stage of the crop with lowest population (0.3 *A. biguttula biguttula*/plant/weeks) during 2020-21 and 0.2 *A. biguttula biguttula*/plant/week during 2021-22. The maximum pest activity was recorded during February to April during both the years. The peak population was recorded from 12<sup>th</sup> SMW and 16<sup>th</sup> SMW during 2020-21 and 2021-22. These results are in confirmatory with the findings of

Rashid *et al.* (2013) that recorded a peak population of *A. biguttula biguttula* was recorded during April month

The activity of *N. viridula* was recorded from 51<sup>st</sup> SMW to 14<sup>th</sup> SMW during 2020-21 and 49<sup>th</sup> SMW to 16<sup>th</sup> SMW during 2021-22. The peak activity of pest was recorded in March month during the both the years whereas the first appearance of green stink bug on brinjal was observed at 44<sup>th</sup> SMW and 43<sup>rd</sup> SMW during Rabi season 2020-21 and 2021-22 by Chaukikar *et al.*, (2020).

The *E. vigintioctopunctata* population was initiated during, vegetative, flowering and fruiting stages of brinjal crop during study period 2020-21 and 2021-22. However, similar results were also reported by Jaiswal *et al.* (2018) who noticed activity of *E. vigintioctopunctata* from the vegetative to the maturity stages of the brinjal crop,

The insect activity was observed from first appeared at 2<sup>nd</sup> SMW to 15<sup>th</sup> SMW during 2020-21 and 4<sup>th</sup> SMW to 25<sup>th</sup> SMW during 2021-22. The maximum shoot infestation was recorded from 8<sup>th</sup> (18.9%) and 9<sup>th</sup> (15.2%) SMW during 2020-21 and 2021-22, respectively. The present finding is also following the result of Kumar and Singh (2013); **Kumar *et al.* (2017)** noticed the activity of shoot and fruit borer throughout the cropping season, **whereas** Shaik (2012), Devi (2013), and Deole (2015) recorded maximum shoot and fruit infestation during April to May.

**Table:1 Seasonal incidence of insect pests of brinjal during 2020-21 and 2021-22**

SMW	Mean population (No. of insect's/plant/week)									
	Aphid <i>Aphis gossypii</i>		Whitefly <i>Bemisia tabaci</i>		Jassid <i>Amrasca biguttula biguttula</i>		Green stink bug <i>Nezara viridula</i>		Hadda beetle <i>Epilachna vigintioctopunctata</i> (Fabricius)	
	2020-21	2021-22	2020-21	2021-22	2020-21	2021-22	2020-21	2021-22	2020-21	2021-22
43	0.2	-	-	-	0	-	-	-	-	-
44	0.8	0.2	-	-	0.3	-	-	-	-	-
45	1.2	0.4	0.3	-	0.3	-	-	-	0.2	-
46	2.2	0.8	0.7	0.1	0.7	0.2	-	-	0.3	-
47	3.8	1.8	0.9	0.4	1.4	0.4	-	-	0.4	0.2
48	4.7	2.7	1.2	0.8	1.7	0.8	-	-	0.3	0.5
49	6.9	3.8	1.5	1.0	2.2	1.0	-	0.2	0.4	0.4
50	8.7	3.9	2.3	1.1	2.9	1.0	-	0.1	0.6	0.4
51	9.9	4.9	2.9	1.9	4.1	1.2	0.1	0.1	1.2	0.6
52	10.8	7.6	3.0	2.0	3.7	1.4	0.1	0.3	1.3	0.7
1	14.1	8.9	3.8	2.7	4.8	1.3	0.2	0.3	1.5	0.5
2	16.9	10.2	4.9	3.6	5.3	1.5	0.3	0.5	1.6	1.3
3	22.6	14.2	5.5	4.2	5.9	1.8	0.3	0.4	1.5	1.5
4	28.8	17.9	5.6	4.9	6.2	2.0	0.5	0.5	2.7	1.8
5	36.6	20.4	6.6	5.1	7.7	2.4	0.4	0.3	2.9	2.2
6	36.2	20.6	6.6	5.1	9.6	3.0	0.7	0.5	3.5	2.5
7	35.1	19.5	7.5	5.2	9.3	3.2	1.0	0.6	4.5	2.8
8	28.6	17.3	7.8	6.7	10.8	3.5	1.3	0.9	4.6	2.7
9	27.3	15.6	8.0	6.9	11.9	3.5	1.5	1.0	4.8	3.6
10	23.9	14.2	8.1	7.0	12.9	3.8	1.7	1.2	5.0	3.9
11	20.4	14.0	9.2	7.1	12.9	4.2	1.1	1.4	5.1	4.5
12	16.5	12.4	10.2	7.0	15.9	5.8	0.7	1.2	4.7	4.5
13	13.6	10.2	10.4	7.2	14.5	6.1	0.4	1.0	4.1	4.8
14	11.9	12.0	12.3	8.0	14.6	9.1	0.2	0.4	3.2	4.1
15	9.1	8.5	10.5	8.6	10.6	10.2	-	0.2	3.0	3.1
16	7.4	4.1	9.5	8.9	8.6	10.3	-	0.1	2.1	2.1
17	5.6	2.3	8.4	6.2	7.3	9.4	-	-	1.5	2.0
18	5.3	1.1	8.1	5.5	5.9	8.8	-	-	1.5	1.2
19	4.1	0.4	5.0	5.2	5.9	5.6	-	-	1.2	0.2
20	3.8	0.4	7.8	5.1	5.2	4.3	-	-	0.4	0.1
21	2.3	0.2	8.2	5.0	3.4	3.5	-	-	0.2	0.2
22	1.5	0.1	5.0	4.2	3.2	2.1	-	-	0.1	0.3
23	0.8	-	2.1	2.0	1.5	1.0	-	-	0.1	0.1
24	0.3	-	0.4	1.1	0.7	1.2	-	-	-	0.2
25	0.1	-	-	0.4	0.3	1.0	-	-	-	0.1

Comment [F6]: Please correct the table format

Fig:1

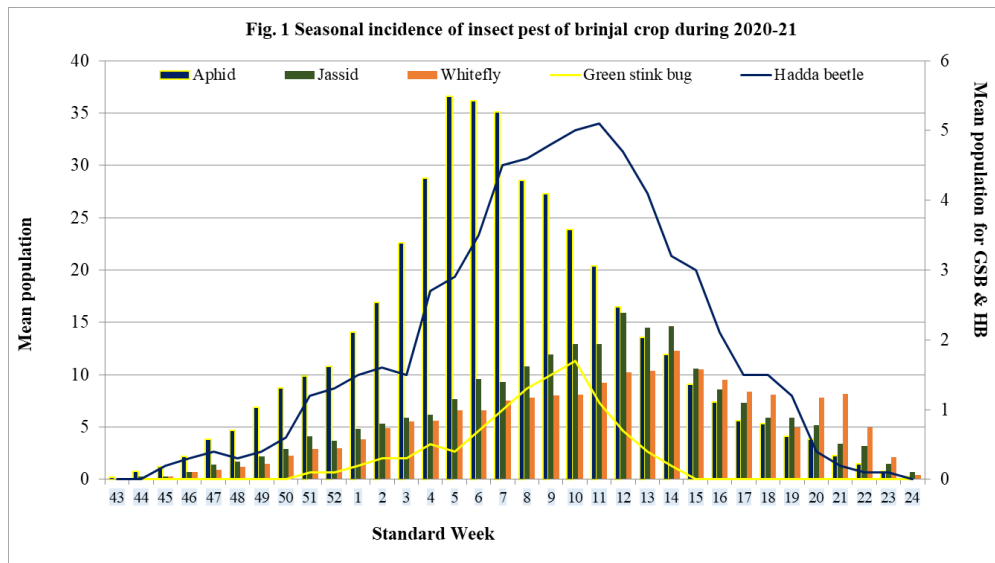
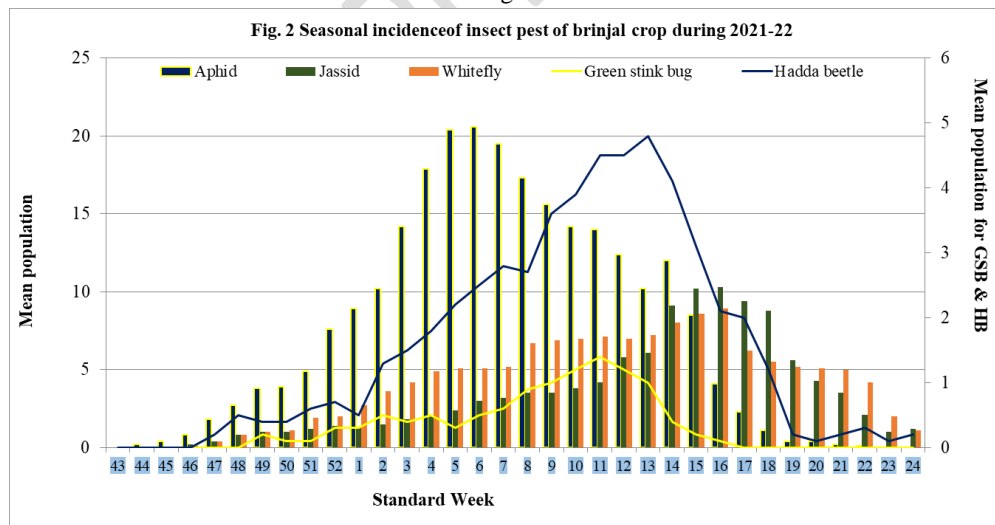


Fig:2



## Conclusion

A total of six insect pest species viz., *A. gossypii* (Glover), *A. biguttula biguttula* (Ishida), *B. tabaci* (Gennadius), *N. viridula* (Linnaeus), *E. vigintioctopunctata* Fabricius and *Leucinodes orbonalis* (Guenee) and were recorded from brinjal. The peak population of aphid was recorded during winter season during both the years and it was contributed 44.1% and 40.6% to total insect population during respective years. The maximum population of *B. tabaci* and *A. biguttula biguttula* was recorded around 14<sup>th</sup> SMW and 16<sup>th</sup> SMW during both the years and it contributed 19.2% & 22.7% and 22.2% and 17.7% to the total insect pest population during 2020-21 and 2021-22, respectively. The peak activity of *N. viridula* was recorded in March month and it contributed 1.1% and 1.8% to the total population during 2020-21 and 2021-22, respectively. The peak population of *E. vigintioctopunctata* was recorded on 11<sup>th</sup> SMW (2020-21) and 13<sup>th</sup> SMW (2021-22). The maximum fruit infestation activity of *L. orbonalis* was recorded at 9<sup>th</sup> SMW (2020-21) and 18<sup>th</sup> SMW (2021-22). A significant negative correlation was calculated between the *B. tabaci* population and abiotic factors such as minimum temperature, wind speed, and rainfall. The *N. viridula* population correlation was non-significant negative with maximum temperature, wind speed & rainfall during the years, 2020-21 and 2021-22. The *E. vigintioctopunctata* population was founded significant negative correlation with minimum temperature, maximum & minimum RH and rainfall.

**Comment [F7]:** Please improve discussion section by review of literature in support of or against your results and then conclude your research.

## References:

- Anonymous (2006). National Centre for Integrated Pest Management (NCIPM). Annual Report, 2005-06, 2006, 41-42. 21.
- Ansari, A. and Memon, N. (2017). Seasonal variation and diversity of hoverflies fauna (Dipter: Syrphidae) in Central Sindh, Pakistan. *Sarhad Journal of Agriculture*, 33(4): 653-660.
- Annem Siva Sankar and Ashwani Kumar (2022) Seasonal incidence of brinjal shoot and fruit borer and red spider mite with their natural enemies' fauna in brinjal crop ecosystem. *International J Trop Insect Sci* 42, 133–141
- Borkakati, R.N., Venkatesh, M.R., and Saikia, D.K. (2019). Insect pests of Brinjal and their natural enemies. *Journal of Entomology and Zoology Studies*, 7(1): 932-937.

- Chakraborty, D. (2014). Population dynamics of *Coccinella transversalis* Fabricious in relation to weather parameters. *The Ecoscan*; 8(1&2): 141-147
- Chandrakumar, H. L., Kumar, C. T., A., Kumar, N. G., Chakravarthy, A. K. and Raju, T. B. P. (2008). Seasonal occurrence of major insect pests and their natural enemies on brinjal. *Current Biotica*; 2(1): 63-73.
- Elanchezhyan K, Muralibaskaran RK. (2008). Evaluation of intercropping system based modules for the management of major insect pests of Brinjal. *Pest management in Horticultural Ecosystem*, 14(1): 67-73.
- Ghananand, T., Prasad, C.S., and Nath, L. (2011). Effect of insecticides, bio-pesticides and botanicals on the population of natural enemies in Brinjal ecosystem. *Vegetos.*; 24(2):40-44.
- Ghosh, S. K., Laskar, N., and Senapati, S. K. (2007). Seasonal incidence of predator *Menochilus sexmaculatus* (Berliner) on brinjal and harmful effect of insecticides on the predator. *Indian Journal of Agricultural Research*, 41(2): 102-106.
- Ghosh, S. K. (2022). Population of Lady Bird Beetle on Vegetable Crops and use of Safe Pesticides for Biodiversity Conservation. "Latest *Trends in agriculture entomology*. Edition: 1, Chapter: 3, Publisher: Integrated Publications. 3: 41-6.
- Harish et.al.(2011) Growth and yield parameters in brinjal as influenced by organic nutrient management and plant protection condition, *RESEARCH Journal of agricultural sciences*, 2(2):221-225,
- Kumar, A. and Khulbe, P. (2016). Influence of abiotic factors and hosts on seasonal dynamic of green lacewing, *Chrysoperla carnea* (Stephens). *Journal of Agri.Search.*; 3(3): 175-177.
- Natekar *et.al* (1987) Screening of insecticides for ovicidal action against brinjal shoot and fruit borer, *Leucinodes orbonalis* Guenee December 2014 *Journal of Entomological Research* 38(4):279-280
- Nirmali and Saikia D.K. (2017). Seasonal incidence of major insect pests of brinjal and their natural enemies. *Indian Journal of Entomology*; 79(4): 449-455.
- Patra S, Chatterjee ML, Shanowly M, Samanta A. (2009). Field evaluation of some new insecticides against brinjal shoot and fruit borer, *Leucinodes orbonalis* (Guen.). *Pesticide Research Journal*; 21(1):58-60.
- Patel, Y. and Patel, P. (2014). Relative abundance of Coccinellid in cotton ecosystem in relation to environmental factors. *International Journal of Current Microbial and Applied Science*; 3(3): 1067-1073.

- Ram and Kumar (2022) Seasonal incidence of brinjal shoot and fruit borer and red spider mite with their natural enemies' fauna in brinjal crop ecosystem, *International Journal of tropical insect science*, Vol.42 No 1 pp.133-141.
- Ramya M, Veeravel R. Population dynamics of *Aphis gossypii* G. and its natural enemies on brinjal in relation to weather factors. *Pest Management in Horticultural Ecosystem*. 2010; 16(1):54-63.
- Ramzana, M., Murtazab, G., Naumanc, M., Zainabd, A., Alie, A., Umaire, M., and Shafiqe, M. (2021). Abundance of insect pests and their natural enemies associated with brinjal (*Solanum melongena*) crop: *Reviews in Food and Agriculture (RFNA)*, 2(1): 01-03.
- Radhakrishnan, V.P Indiragandhi, & G V Ramasubramanian. (2022). Efficacy of insecticides against sesame shoot webber *Antigastra catalaunalis*. *Indian Journal of Entomology*, 1–3
- Roy, G., Gazmer, R., Sarkar, S., Laskar, N., Das, G. and Samanta, A. (2016). Comparative bioefficacy of different insecticides against fruit and shoot borer (*Leucinodes orbonalis* Guenee) of brinjal and their effect on natural enemies. *International Journal of Green Pharmacy*, 10 (4): S257-S260.
- Sajjad, A., Saeed, S. and Ashfaq, M. (2010) Seasonal Variation in Abundance and Composition of Hoverfly (Diptera: Syrphidae) Communities in Multan, Pakistan. *Pakistan J. Zool.*, 42(2): 105-115.
- Stanley J, Chandrasekaran S, and Regupathy A (2007). Evaluation of Emamectin benzoate against Brinjal Fruit Borer, *Leucinodes orbonalis* (Guen.). *Pesticide Research Journal*; 19(1): 34-36.
- Sharma, S.S., and Kaushik H.D. (2010). Effect of Spinosad (a bioinsecticide) and other insecticides against pest complex and natural enemies on eggplant (*Solanum melongena* L.). *Journal of Entomological Research*, 34(1): 39-44.
- Waiba, K.M., Sharma, P., Kasi, I.K., Chauhan, S., (2021). Studies of Genetic Variability of Tomato (*Solanum lycopersicum* L.) Hybrids under Protected Environment. *International Journal of Bio-resource and Stress Management*. 12, 264-270.
- Kasi, I.K., Singh, M., Waiba, K.M., Monika, S., Waseem, M.A., Archie, D., Gilhotra, H., 2021a. Bio-efficacy of entomopathogenic nematodes, *Steinernema feltiae* and *Heterorhabditis bacteriophora* against the Cabbage butterfly (*Pieris brassicae* [L.]) under laboratory conditions. *Egyptian Journal of Biological Pest Control*. 31, 125.