

Original Research Article

Characterization of Climate Change and aquifer recharge in three localities in the South-west of Côte d'Ivoire

Abstract

Located in the southern-west part of Côte d'Ivoire, the study area's economic activity is rainfall-dependent agriculture and facing climate change impact on water resources. The aim of this study is to improve the resilience of water users based on a better understanding of recent manifestation of climate change. Specifically, it is to determine the episodes of rainfall variability and estimate the effective rainfall and groundwater recharge. The hydro-climatic data base for this study covers more or less the period from 1977 to 2021. The characterization of rainfall variability was highlighted by the calculation of rainfall indices, while effective rainfall and recharge values were determined using the ESPERE (Estimation of Effective Rainfall and Recharge) software according to different mathematical methods. Using the non-parametric Pettitt test was possible to detect years with significant rainfall breaks. Thus, there was an alternation of deficit and surplus periods at different scales in the three localities. However, break in the rainfall pattern occurred in 1989 in San Pedro, whereas this event took place a year later, in 1990, in other two localities. The effective rainfall and annual recharge closely followed the rainfall evolution in the three localities at different scales. This acquired knowledge of hydrological and hydrogeological rainfall, dynamics can be used to better educate the resilience and climate change adaptation habits of the populations in the southwest region of Côte d'Ivoire

Keywords: Climate change; Climatic break; Aquifer recharge.

1- Introduction

Climate change refers to a change in the state of the climate that can be identified using statistical tests by changes in the mean and/or the variability of its properties, and that persists for an extended period, typically decades or longer (IPCC, 2014). And so, dry seasons becoming more frequent, higher temperatures than usual, very short rainy season in previous dry periods, droughts, floods, among other consequences, attributed to climate change, are considered the main threat to human development in our generation (UNDP, 2007). All this variability in the weather has the consequence an existence of an increasing or decreasing trend in a hydrological time series which can be induced either by climatic factors (precipitation case), (Marchand et al., 1988; Maheras & Kolyva-Mahera, 1990) or through changes in land use and catchment characteristics (runoff case). In the same line, the demand for groundwater is rapidly increasing with population growth, while climate change is imposing additional stress on water resource (Wu. et al, 2015). In fact climate change influences groundwater systems in several ways (Taylor, et al., 2013 et Cuthbert, et al., 2019) The most direct climate change effect on groundwater is related to the groundwater recharge as climate change can alter rainfall amounts and patterns. In terms of the hydrological cycle, climate change can affect the amounts of soil infiltration, deeper percolation, and hence groundwater recharge. Also, rising temperature increases evaporative demand over land (Berg. et al, 2016) which limits the amount of water to replenish groundwater. By contrast, the anthropogenic effects on groundwater resources are mainly due to groundwater pumping and the indirect effects of irrigation and land use changes (Lo. & Famiglietti, 2013). Therefore, it will be important to analyse effect of climate change in relation with aquifer recharge. In this study, we will focus our analyse on three localities in the South-west of Côte d'Ivoire (San-pedro, Tabou and Taï). During the last years, numerous research studies (Lasm et al, 2011; De Lasm et al, 2012) have used different methods to better understanding of recent manifestation of climate change. Our contribution is therefore to characterize the recent manifestation of climate change and assess effective rainfall and groundwater recharge. This characterization of rainfall variability was highlighted by the calculation of rainfall indices, while effective rainfall and recharge values were determined using the ESPERE (Estimation of Effective Rainfall and Recharge) software according to different mathematical methods. Using the non-parametric Pettitt test was possible to detect years with significant rainfall breaks. The aim of this study is to improve the resilience of water users based on a better understanding of recent manifestation of climate change. Specifically, it is to determine the episodes of rainfall variability and estimate the effective rainfall and groundwater recharge.

2- Studyarea

Extends within the 4°35' and 6°40' parallels of northern latitude and the 7°40' and 6°20' meridians of eastern longitude, the study area covers Tai, Tabou and San-Pedro zone (Figure 1)

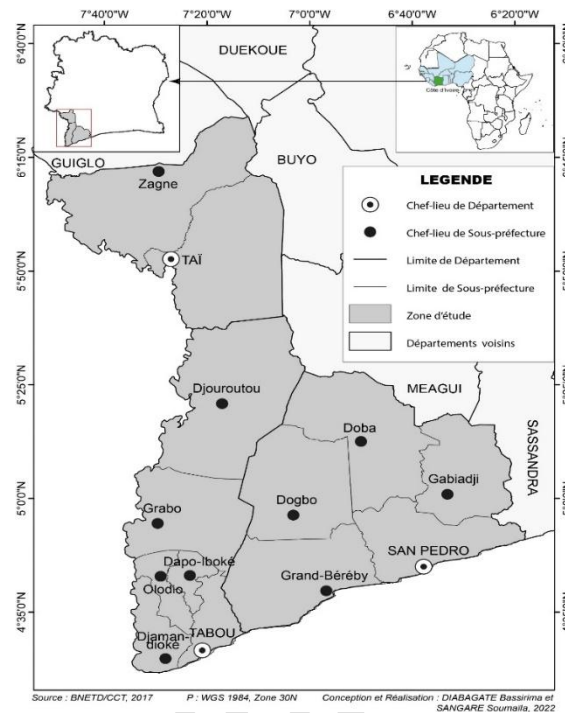


Figure 1. Geographical location of the study area.

which has a surface area of approximately 16502 km². It is essentially drained by the San Pedro river and its tributaries (Palapod, Ménégbé, Kré) and Brimay, Néro, Dodo rivers. The climate is characterized by two rainy seasons and two dry seasons. The average annual rainfall recorded from 1977 to 2020 is 1730 mm for San Pedro (rainiest months: May-July and September–November), Tabou is 1616,7 mm (rainiest months: April-July and August–November) and Tai is 902,2 mm (rainiest months: March-June and July–November).

The study area belongs to the Proterozoic domain of Côte d'Ivoire. Petrographically, it is made up of crystalline and crystallophyllous rocks: gneisses, migmatites, granites, granodiorites and micaschists (**Figure 1**). Tectonically and structurally, this region is characterized by polydeformation consisting of flattening and ductile shear mechanisms with retrograde metamorphism. Two major deformations have affected this part of the country, according to the work of **Papon and Lemarchand (1973)** and **Yacé (2002)**: i) tangential tectonics characterized by the plicative style and the identification of isoclinal folds with sub-vertical axial planes, ii) brittle tectonics characterized by numerous fractures of local to regional extent. The various successive tectonic events in this region have resulted in well-developed fracturing.

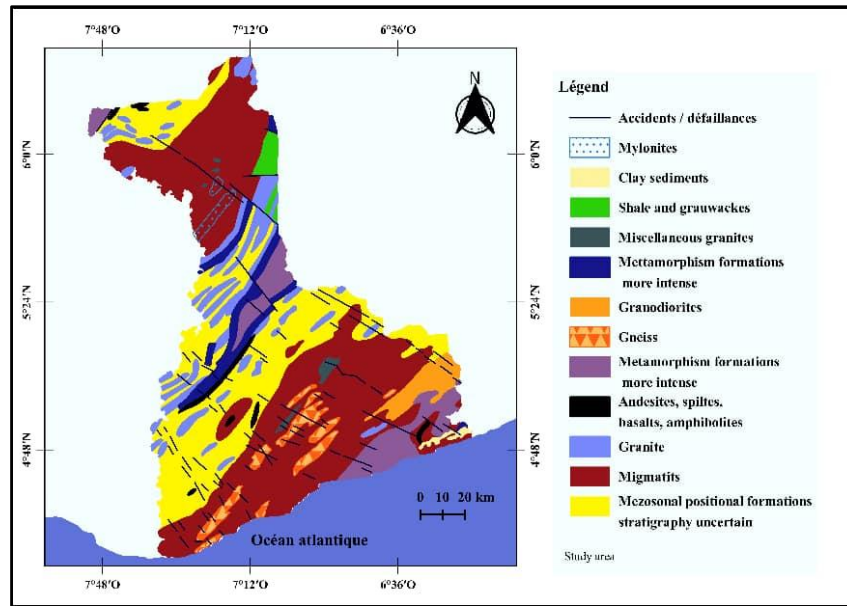


Figure 2. Simplified geological map of the study area

3- Material and Methods

3.1- Data Used

Hydroclimatic (precipitation and temperature) data were used for this study. The hydroclimatic data were provided by SODEXAM (aeronautical and meteorological, operations and development center).

Table 1. hydrological stations Characteristics. (Meteo. = meteorological; Long. = longitude; Lat. = latitude; Obs. = observation)

Station type	Localities	Geographical coordinates		Measured data	Obs. period	Time serie
		Long. E	Lat. N			
Meteo	San-pedro	6°38'	4°44'	Precipitation	1977-2020	Monthly
				Temperature		
	Tabou	7°37'	4°42'	Precipitation	1977-2020	
				Temperature		
	Tai	7°27'	5°52'	Precipitation	1977-2020	
				Temperature		

The precipitation records of the meteorological station of san-pedro showed significant gaps for certain months and/or even years. Unfortunately, this station is the only one located in the southwest part of the study area. The missing data were completed to facilitate the analysis and ease the interpretation of the results. According to Nicholson, and al., 1988 missing or

erroneous data of a station can be estimated based on the values of nearby stations if they are subject to the same weather conditions and located in the same geographic zone.

The software ESPERE version 2 is Microsoft Excel spreadsheet designed by French Geological Survey to estimate effective rainfall and aquifer recharge through simultaneous calculations with up to ten different methods (Lanini, et al., 2016)

3.2. Spatiotemporal Variability of Rainfall

3.2.1- Rainfall index or Nicholson method

It is used to determine the number of deficit and surplus year. Thus, it is used to identify wet, normal, and/or dry periods from rainfall dataset. This rainfall index was computed using equation 1 below (Nicholson, 1993)

$$I_i = \frac{(X_i - X_m)}{\sigma} \quad (eq1)$$

Where X_i is the precipitation for the year,

X is the average precipitation of the study period and σ is the standard deviation of the annual rainfall that occurred during the study period. Negative values indicate a rainfall deficit during the period and positive values define excessive rainfall amounts.

3.2.2- Break in Precipitation

According to Lubès-Niel et al. 1998, a break is defined by a change in the probability law of the random variables, of which successive realizations define the studied chronological series. To highlight climatic breaks, several methods were previously used: The Pettitt test (Pettitt, 1979), the Bayesian method (Lee and Heghinian 1983), and Hubert's segmentation method (Hubert et al. 1998). The use of these statistical methods is justified by their robustness. Based on the literature (Paturel et al. 1995; Servat et al. 1996 et Lubès-Niels et al. 1998), we choose to use Pettitt test to detect statistical breaks in the precipitation levels during the period considered. These statistical methods were applied to our data by utilizing Khronostat software (Version 1.01). which was developed by the mixed research unit for Hydro sciences of Montpellier (Nicholson, 1988)

3.2.2.1 Pettitt test method

The Pettitt test (Pettitt, 1979) is based on the ranking r_i of the y_i values. The ranks r_i are obtained by ordering the data in crescent order, so that the smallest one gets ranked 1 and the highest gets the n-rank. The U_k is then obtained as :

$$U_k = 2 \sum_{i=1}^k r_i - k(n+1); \quad k = 1, 2, \dots, n \quad (eq2)$$

If a break occurs in the year K , then the U_k is:

$$U_k = \max_{1 \leq k \leq n} |U_k| \quad (eq3)$$

3.2.3- Aquifer recharge through modelling with Turc ,Thornthwaite, Edjitano and Michel (S, Lanini et al , 2020)

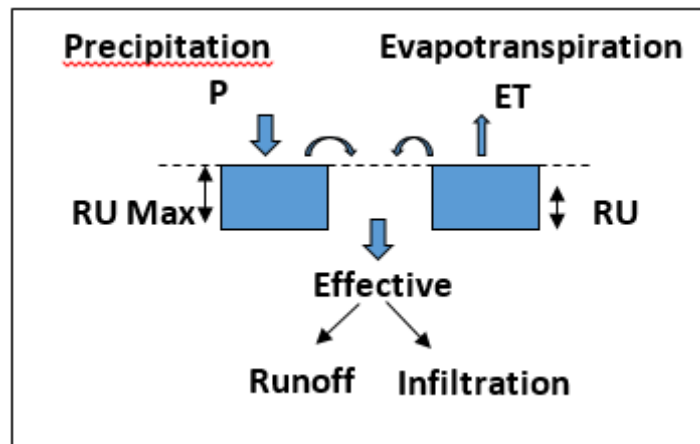


Figure 3. Diagram of balance sheet

Aquifer recharge and effective rainfall were estimated by using ESPERE software version 2. This Microsoft Excel worksheet application allows to apply several commonly used methods to estimate groundwater recharge rapidly and simultaneously. According to available data of the study area, we applied and compared the results of one empirical method (Turc) and two slightly water budget method (Thornthwaite, Edjitano).

4- Results and Discussion

4.1-Climate change characterization

4.1.2- Rainfall trends and variability break

Analysis of rainfall data using Nicholson rainfall indexes is presented in **Figure 4**. This figure highlights wet years (i.e. with positive values of Nicholson index) and dry years (i.e. with negative values index) that occurred in the study area.

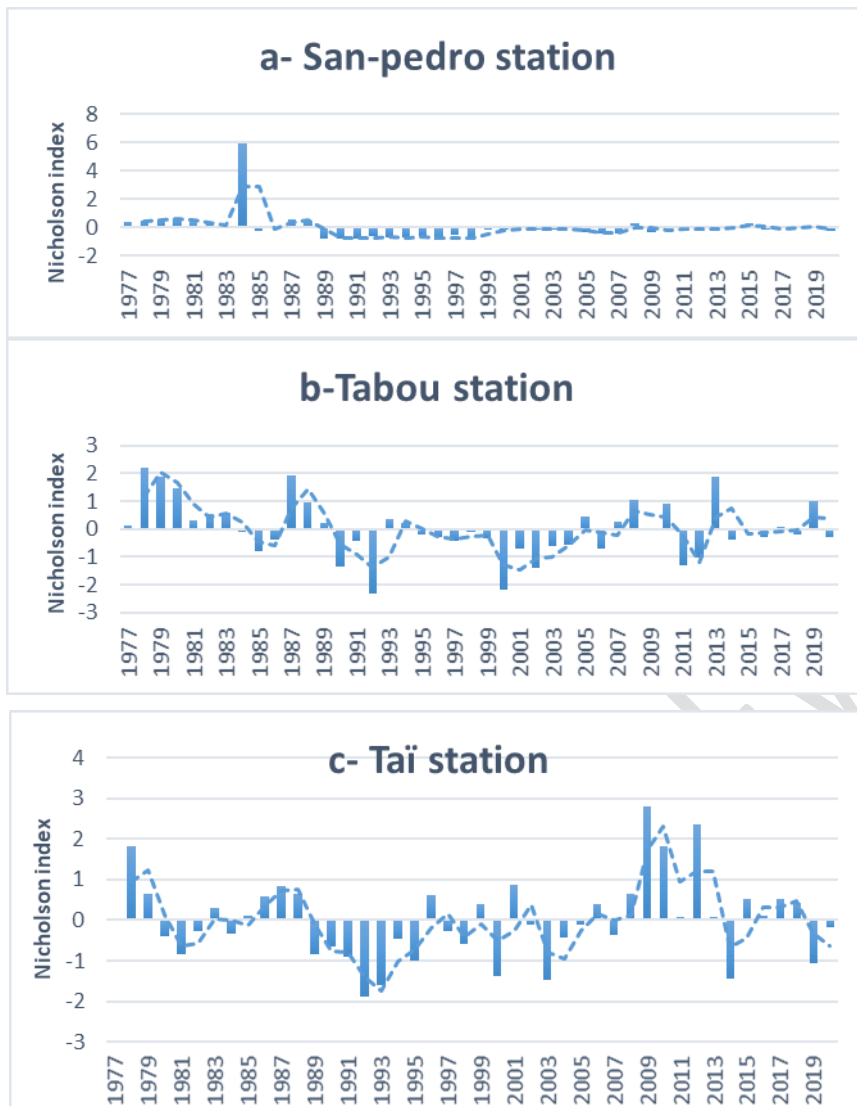


Figure 4. Variation of Nicholson rainfall index in the south-west

Table 2: Alternation of different phases and breaks detected within the precipitation series recorded at the measuring stations.

Station	Periodic trend within the series			Break
	Wetperiod	Normal period	Dry period	
San-pedro	1977-1984	-	1985-2020	1989
Tai	2009-2020	1977-1988	1989-2008	1990 ; 2007
Touba	1977-1988	-	1989-2020	1990

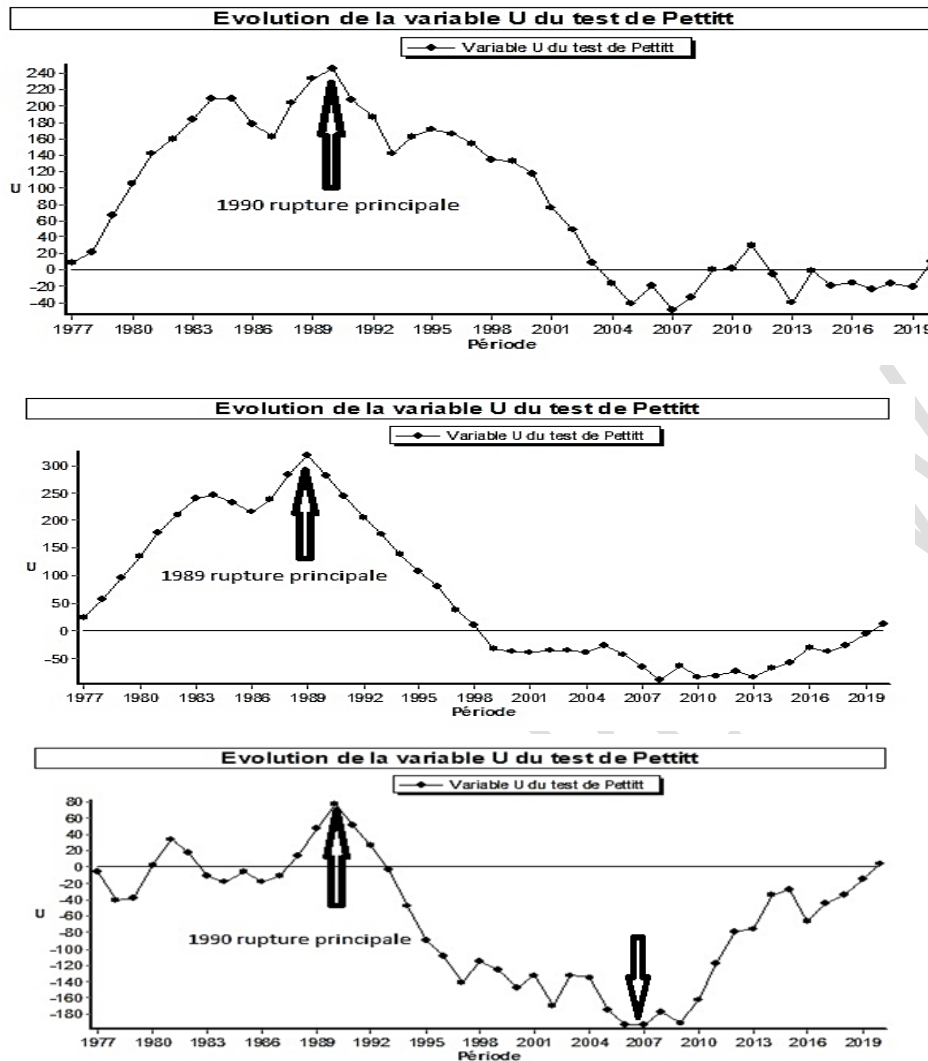


Figure 5. Variation of Pettitt U variable and rainfall from 1977 to 2020

Two (2) tendencies emerged when analyzing Nicholson rainfall index graph at San Pedro, a surplus wet period from 1977 to 1984 and a dry period from 1985 to 2020. The Pettitt statistical test method applied to the time series reveals a break occurred into precipitations at the year 1989, (Figure 5). Three (3) main climate periods occurred at Taï. The normal one from 1977 to 1988 followed by a long dry period from 1989 to 2008 and occur the wet period from 2009 to 2020, two (2) breaks were noted. The first one occurred in 1990 and the second in 2007 when rainfalls started increasing again. The periods 1991–1988 and 1989–2020, respectively, correspond to the wet periods and dry period at Tabou. The significant break occurred on the year 1990 according to the result from the Pettitt statistical test method applied.

The dry period resulting from the decrease in rainfall pattern in the years 1990 was also observed by **Gnamba et al., (2020)**, **Kpan et al., (2020)** in the north and the coastal area part of Côte d'Ivoire. Moreover, several studies identified an important decrease in rainfalls after the year 1970 in Côte d'Ivoire (**Paturol et al., 1995**) especially in the West, the Center, and

theSouth-west (Goula et al., 2006; Soro et al., 2004; Kouassi,2007; Soro et al., 2011). According Goula et al. (2006b) and Kouassi (2007),these breaks led to rainfall deficit

4.2-Aquifer rechargeand Effectiverainfall

4.2.1- Effectiverainfallestimation

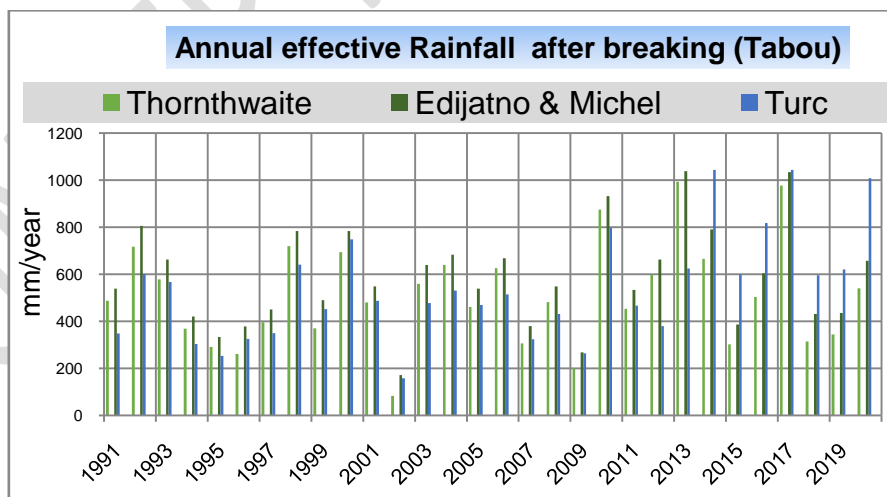
Under ESPERE model,temperature and rainfalls data are using to determine effective rainfall. Thus, Thornthwaite,Turcand Edijatno& Michel methodssimulations allowedto estimatethe annual effective rainfall before and after breakingin three localities.

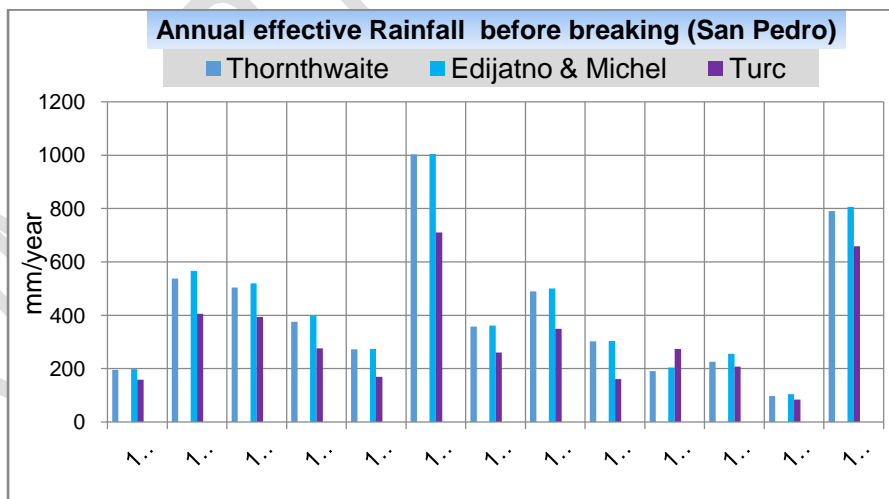
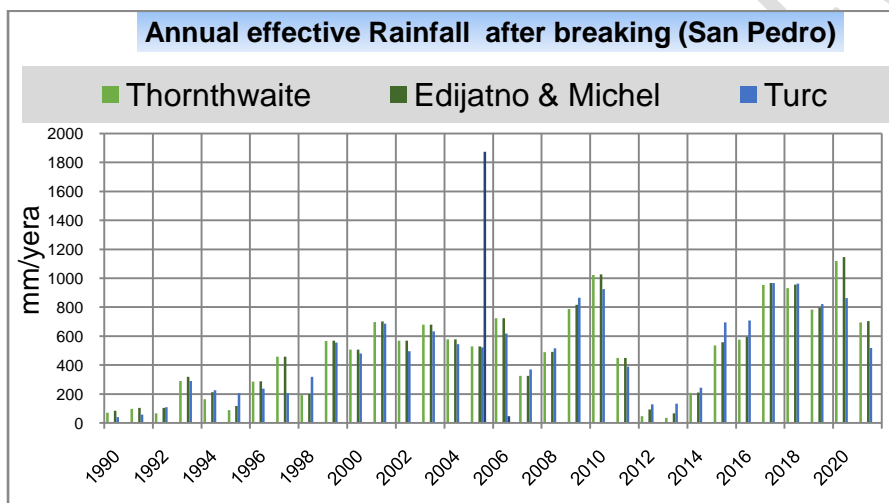
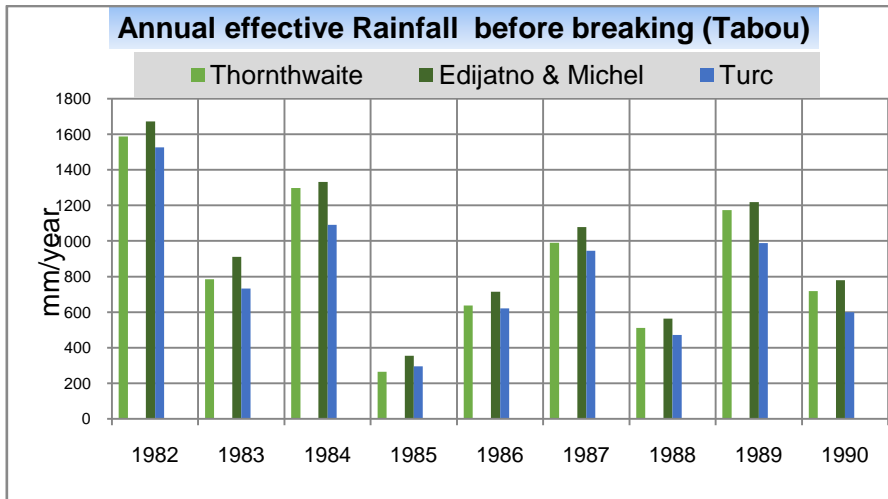
This modeling solutions reveal that:

*In San Pedro, effective rainfallchanges from 411 mm before break to 484.9 mm after rainfall break using Thornthwaite method. However, Turc method show that effective rainfall moved from 422 mm beforebreak to 498.1 mm after break andEdijatno& Michel methods effective rainfall change from 316mm before break to 478.9 mm after break.(Fig. 6and Table 3).

*In Tabou effective rainfall changes from 884.9 mm before break to 509.4mm after rainfall break using Thornthwaite method. However, Turc method show that effective rainfall moved from 807.6 mm before break to 541.3 mm after break and Edijatno& Michel methods effective rainfall change from 958.5 mm before break to 586.5 mm after break. (Fig. 6and Table 3).

*In Taï effective rainfall changes from 1026.8 mm before break to 444.8mm after rainfall break using Thornthwaite method. However, Turc method show that effective rainfall moved from 957.6 mm before break to 492.2 mm after break and Edijatno& Michel methods effective rainfall change from 1075.2 mm before break to 492.5 mm after break. (Fig. 6 and Table 3).





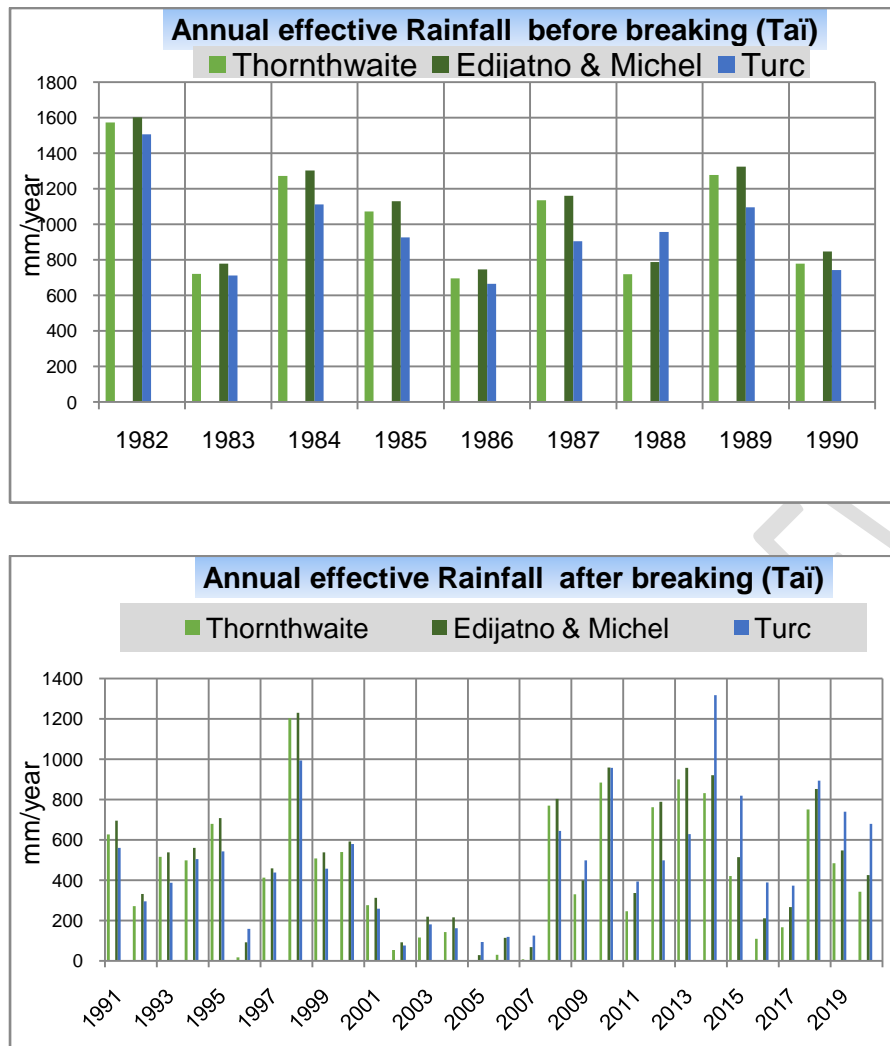


Figure 6.: Effective rainfall estimated under ESPERE modeling

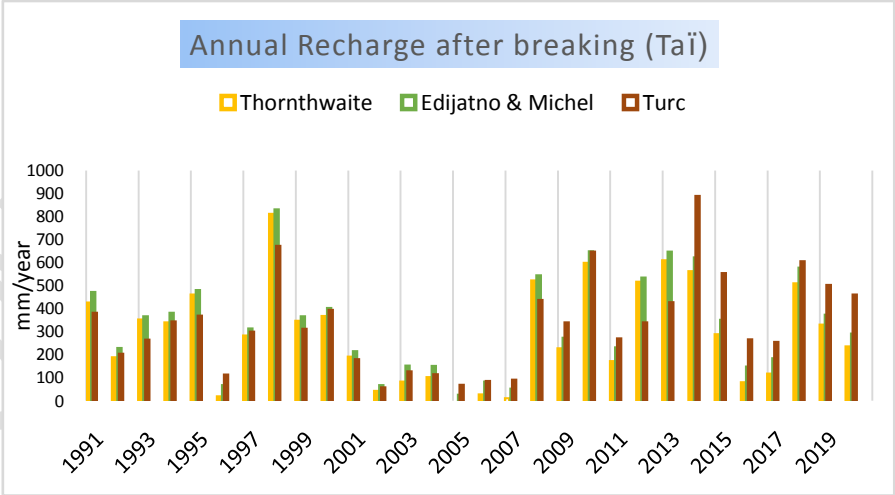
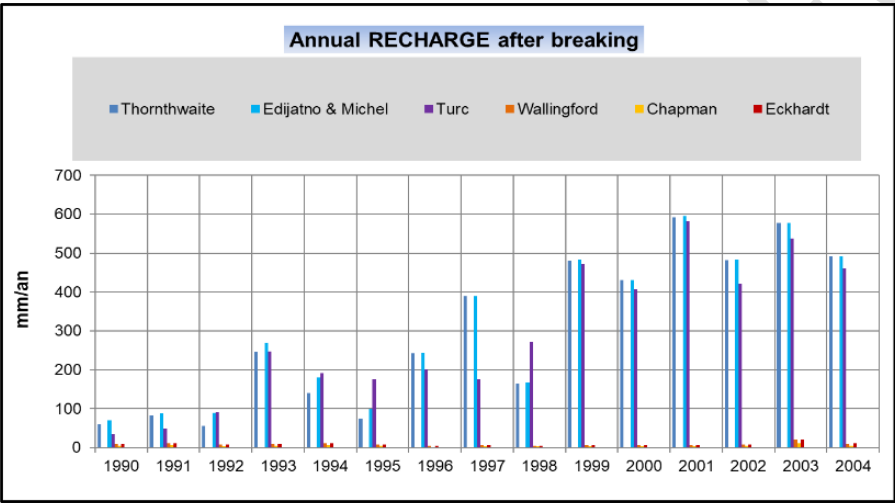
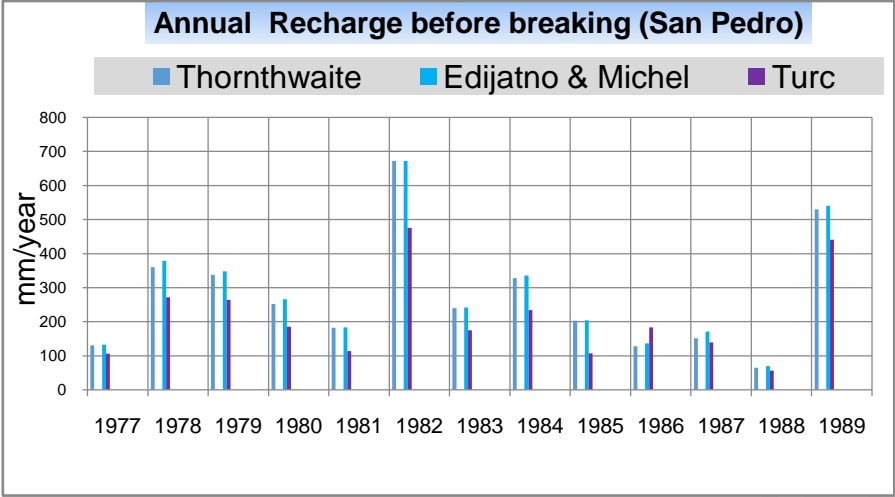
4.2.2- Aquifer recharge estimation

Recharge estimation through ESPERE modeling is taking into account some parameter such as evaporation with transpiration and river discharges, in addition of temperature and rainfalls entry data. Chronical filter methods such as Wallingford, Chapman, Edijatno & Michel and Eckhardt included in ESPERE package was used to estimate annual aquifer recharge. The results reveal that:

*In San Pedro, Thornthwaite method highlighting that recharge moves from 275 to 325 mm by year while Turc method estimate recharge from 212 to 321 mm by year and Edijatno & Michel method estimate recharge from 283 to 334 mm by year (Fig. 7 and Table 3).

*In Tabou, Thornthwaite method highlighting that recharge moves from 592.9 to 341.3 mm by year while Turc method estimate recharge from 541.1 to 361.7 mm by year and Edijatno & Michel method estimate recharge from 642.2 to 392.9 mm by year (Fig. 7 and Table 3).

*In Tai, Thornthwaite method highlighting that recharge moves from 688 to 298 mm by year while Turc method estimate recharge from 641.6 to 329.7 mm by year and Edijatno & Michel method estimate recharge from 720.4 to 330 mm by year (Fig. 7 and Table 3).



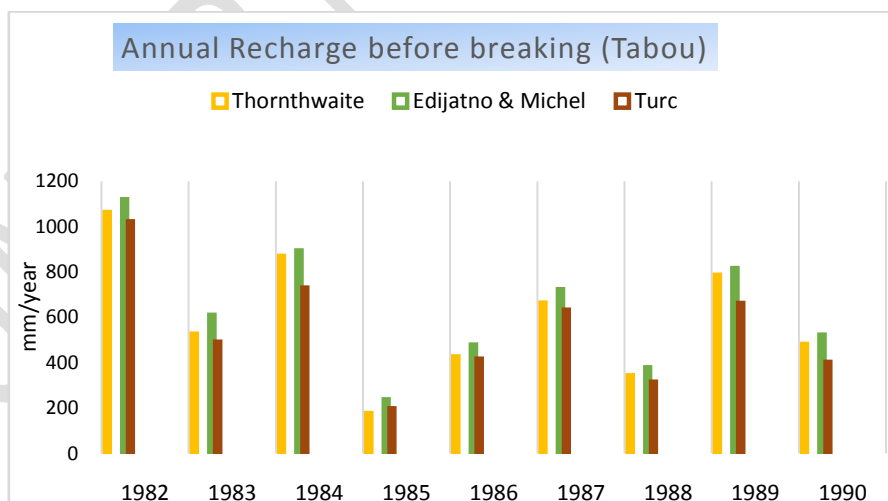
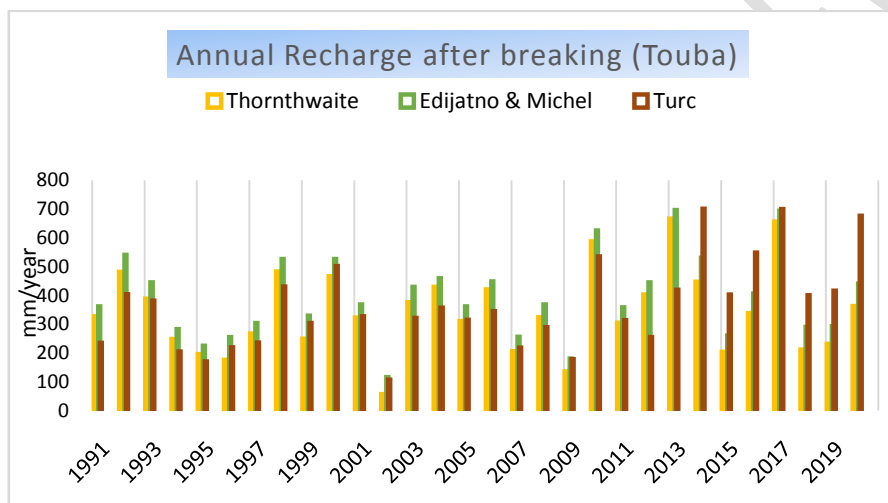
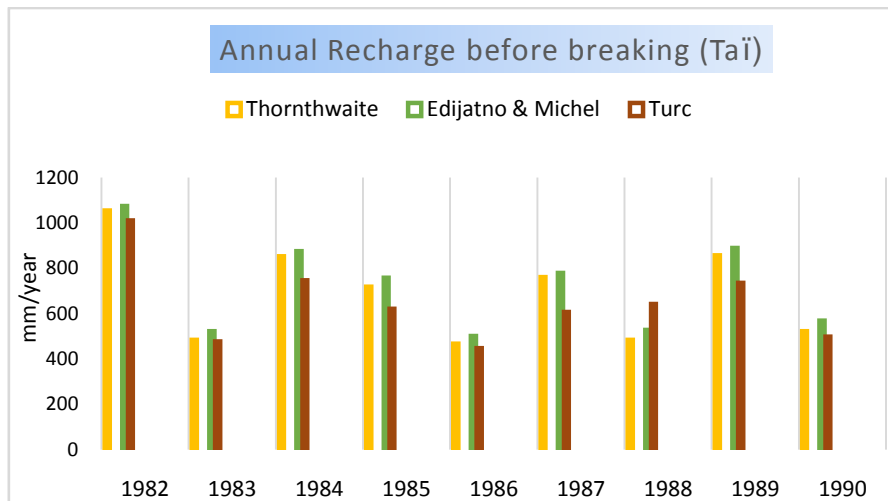


Figure 7.:Recharge estimated through different methods before and after break in ESPERE model.

Table 3: Aquifer recharge and Effectiverainfall estimation using different methods

Locality	Period	Methods	Effectiverainfall	Aquifer recharge
San-pedro	Before break	Thornthwaite	411	275
		Turc	422	212
		Edijatno& Michel	361	283
	After break	Thornthwaite	484.9	325
		Turc	498.1	321
		Edijatno& Michel	478.9	334
Tabou	Before break	Thornthwaite	884.9	592.9
		Turc	807.6	541.1
		Edijatno& Michel	958.5	642.2
	After break	Thornthwaite	509.4	341.3
		Turc	541.3	362.7
		Edijatno& Michel	586.5	392.9
Tai	Before break	Thornthwaite	1026.8	688
		Turc	957.6	641.6
		Edijatno& Michel	1075.2	720.4
	After break	Thornthwaite	444.8	298
		Turc	492.2	329.7
		Edijatno& Michel	492.5	330

In previous works, the authors showed that it was the gross rainfall that inevitably affected aquifer recharge. In view of the results obtained in this work, which highlight the strong dependence between effective rainfall and aquifer recharge, it is important to point out that effective rainfall is a real factor in the evolution or regression of aquifer recharge. This is in line with the studies carried out by **Omer Z. et al., 2020**.

Conclusion

This study evidenced the characteristics of rainfall variability with significant breaks in three localities of Côte d'Ivoire, It also highlighted the evolution of the aquifer recharge values estimated before and after rainfall breaking, Globally, climate change proofs evidenced a short surplus humid period followed by a long deficit rainy period, Aquifer recharge strictly followed effective rainfall everywhere, Particularly, the resilience building at Tai locality, is the western part, is the best one and must be replicate as the climate adaptation example,

UNDER PEER REVIEW

References

- A.Gustard & S. Demuth Editors, Manual on Low-Flow Estimation and Prediction, Operational Hydrology Report n°50 - WMO n°1029, 2008
- Berg, A. et al. Land-atmosphere feedbacks amplify aridity increase over land under global warming. *Nat. Clim. Change* 6, 869–874 (2016).
- Bruneau, P.; Rassam, J.-C. Application of a Bayesian model to detect shifts in the mean of a series. *Hydrol. Sci. J.* 1983, 28, 341–354.
- Chapman TG, Maxwell AI (1996) Baseflow separation – comparison of numerical methods with tracer experiments. Institute Engineers Australia National Conference. Publ. 96/05, 539-545.
- Cuthbert, M. O. et al. Observed controls on resilience of groundwater to climate variability in sub-Saharan Africa. *Nature* 572, 230–234 (2019).
- Eckhardt K., 2005 - How to construct recursive digital filters for baseflow separation. *Hydrology Processes* 19(2), 507-515
- G.N. Delin, R.W. Healy, D.L. Lorenz, J.R. Nimmo (2007) Comparison of local-to-regional-scale estimates of ground-water recharge in Minnesota, USA. *J. of Hydrology* (2007) 334, 231-249
- Gnamba F, Gautier K, Y Fabrice, Solange Y ,(2020). Variabilité pluviométrique dans la région de Katiola au nord de la Côte d'Ivoire (Afrique de l'ouest). *European Scientific Journal*, esj, 16 (33), 169. <https://doi.org/10.19044/esj.2020.v16n33p169>
- Goula B. T. A., Kouassi V. J. et Savané I., (2006 a). Impacts du changement climatique sur les ressources en eau en zone tropicale humide : cas du Bandama en Côte d'Ivoire. *Revue Agronomie Africaine*, vol.18, No. 1, pp.1-11.
- Hubert, P.; Servat, E.; Bendjoudi, H.; Lubes-Niel, H. La Procédure de Segmentation, Dix ans Après. In *Water Resources Variability in Africa during the XXth Century*; IAHS: Abidjan, Côte d'Ivoire, 1998; pp. 267–273.
- IPCC (2014) Summary for Policymakers. In *Climate Change 2013 – The Physical Science Basis: Working Group I Contribution to the Fifth Assessment Report of the Intergovernmental Panel on Climate Change*. Cambridge: Cambridge University Press. doi: 10.1017/CBO9.
- ISESCO (2009). *Stratégie pour la gestion des ressources en eau dans le monde islamique*, 58p.
- Khronostat, version 1.0; Logiciel d'analyse statistique de séries chronologiques, Développé Par l'Orstom UR 2-21 ; l'École des Mines de Paris et l'UMR GBE de l'Université de Montpellier II : Montpellier, France, 1998. Available online : <http://www.hydrosciences.org/index.php/2020/09/04/khronostat/> (accessed on 4 September 2020).
- Kouassi A. M. (2007). Caractérisation d'une modification éventuelle de la relation pluie-débit et ses impacts sur les ressources en eau en Afrique de l'Ouest : cas du bassin versant du N'zi (Bandama) en Côte d'Ivoire. Thèse de Doctorat de l'Université de Cocody (Abidjan-Côte d'Ivoire), 210 p.

- Kpan Oulai Jean Gautier, Oga Yei Marie-Solange, Yao Koffi Theodore, Yapi Assa Fabrice, Baka Derving, Lasm Theophile, Biemi-Jean(2016), Impact of Climate Variability on Water Resources And Population Health in the South Eastern Coastal Area of Côte d'Ivoire , European Scientific Journal, doi: 10.19044/esj.2016.v12n35p317 URL:<http://dx.doi.org/10.19044/esj.2016.v12n35p317> , edition vol.12, No.35 ISSN: 1857 – 7881 (Print) e - ISSN 1857- 7431
- Lanini, S., Caballero, Y., Seguin, J.-J. and Maréchal, J.-C. (2016), ESPERE—A Multiple-Method Microsoft Excel Application for Estimating Aquifer Recharge. *Groundwater*, 54: 155–156. doi:10.1111/gwat.12390
- Lasm, T. ; De Lasme, O. ; Oga, M-S. Y. ; Youan Ta, M. ; Baka, D. ; Kouame, F. & Yao, T. K. (2011). Caractérisation hydrochimique des aquifères fissurés de la région de San-Pedro (Sud-ouest de la Côte d'Ivoire). *International Journal of Biology and Chemical Sciences*, 5 (2) : 642-662
- Lo, M.-H. & Famiglietti, J. S. Irrigation in California's Central Valley strengthens the southwestern U.S. water cycle. *Geophys. Res. Lett.* 40, 301–306 (2013).
- Lubes-Niel, H.; Masson, J.M.; Paturol, J.E.; Servat, E. Climatic variability and statistics. A simulation approach for estimating power and robustness of tests of stationarity. *J. Water Sci.* 1998, 11, 383–408.
- Maheras, P. & Kolyva-Mahera, F. (1990) Temporal and spatial characteristics of annual precipitation over the Balkans in the twentieth century. *Int. J. Climatol.* 10: 495–504.
- Marchand et al., 1988 An experimental study of the formation process of adiabatic shear bands in a structural steel *Journal of the Mechanics and Physics of Solids*, 36 (3) , pp. 251-283.
- Nicholson S. E. (1993). An overview of Africa rainfall fluctuations of the last decade. *J. Climatol.* ; 6, pp.1463-1466.
- Nicholson, S.E.; Kim, J.; Hoopingarner, J. Atlas of African Rainfall and Its Interannual Variability; Department of Meteorology, Florida State University Tallahassee: Florida, FL, USA, 1988; p. 237.
- O. Zéphir De Lasme; T. Lasm; M.-S. Oga; M. Youan Ta; D. Baka; S. Kouakou ; O. Zaïbo Onetie ; T. Koffi Yao (2012) Hydrodynamic properties analysis of fissured aquifers of San-Pedro area (South-western Côte d'Ivoire). *Estudios Geológicos*, 68(2), 217-232, julio-diciembre 2012. ISSN: 0367-0449. doi:10.3989/egeol.40672.159
- Omer Zéphir De Lasme, Avy Stephane Koffi, and Dodo Guy Cedric Gnali (2020), Assessment of Groundwater Resource in Climate Variability Context at Sinematiali (North of Côte d'Ivoire), *European Journal of Environment and Earth Sciences*, DOI: <http://dx.doi.org/10.24018/ejgeo.2020.1.5.73>, Vol 1 | Issue 5 |
- Papon, A. & Lemarchand, R. (1973). Geology and mineralization of South-West Ivory Coast. Summary of the work of the SASCA operation 1962-1968. *Memory B.R.G.M.*, 80: 1-284.

- Paturel J. E., Servat E., Kouamé B. and Boyer J.F. (1995). Manifestation of drought in non-Sahelian West Africa, case of Ivory Coast, Togo and Benin. *Drought Bulletin*, vol.6, n°1, pp. 95-102.
- Paturel, J.E.; Servat, E.; Kouame, B.; Boyer, J.F.; Lubes, H.; Masson, J.M. Manifestations of drought in non-Sahelian West Africa. Case of Ivory Coast, Togo and Benin. *Drought* 1995, 6, 95–102.
- Pettitt, A.N. A non-parametric approach to the change-point problem. *Appl. Stat.* 1979, 28, 126–135.
- Pettitt, A.N. A Non-Parametric Approach to the Change-Point Problem. *Appl. Stat.* 1979, 28, 126–135.
- Servat, E.; Paturel, J.-E. ; Lubès-Niel, H. Drought reaches tropical Africa. *The Research.* 1996, 290, 24–25.
- Soro N., Lasm T., Kouadio B. H., Soro G. and Ahoussi K. E. (2004). Variability of the rainfall regime in southern Côte d'Ivoire and its impact on the supply of the Abidjan aquifer. *Revue Sud Sciences et Technologies*, n°12, pp 30-40.
- Soro T. D., Soro N., Oga Y. M. S., Lasm T., Soro G., Ahoussi K. E. and Biémi J (2011). Climate variability and its impact on water resources in the square degree of Grand-Lahou (South-West of Ivory Coast). *Physical Geography and Environment Review*, vol.5, pp. 55-73.
- Taylor, R.G. et al. Ground water and climate change. *Nat. Air conditioning. Change* 3,322–329 (2013).
- The United Nations Educational (1998), Scientific and Cultural Organization 7 Place de Fontenoy, 75352 Paris 07 SP, Designed and produced by RPL Design, Milton Keynes, UK
- Thornthwaite, C.W. (1948) An approach toward a rational classification of climate. *Geographical Review* 38:55 – 94
- UNDP (2007) Human Development Reports. <http://hdr.undp.org/en/>
- Wu, W. Y., Lan, C. W., Lo, M. H., Reager, J. T. & Famiglietti, J. S. Increases in the annual range of soil water storage at northern middle and high latitudes under global warming. *Geophys. Res. Lett.* 42, 3903–3910 (2015).
- Yacé, I. (2002). Introduction to geology. The example of Ivory Coast and West Africa. CEDA edition, 183 pp.