

## Original Research Article

### Antifungal activities of *Moringa oleifera* and *Ageratum conyzoides* against fungi causing deterioration of Plantain (*Musa paradisiaca* .L).

#### Abstract

**Aim:** This study investigated antifungal activities of ethanol and methanol leaves extracts of *Moringa oleifera* and *Ageratum conyzoides* on fungal pathogens identified in the deterioration of plantain.

**Study design:** This experiment was laid in a randomized complete block design. Rotten plantain Place and Duration of study: Department of Biology, The Polytechnic, Ibadan, Nigeria, between September 2022 and March 2023

**Methodology:** Samples were inoculated into Potato Dextrose Agar (PDA) for isolation of fungi causing spoilage. Fungal identification was based on cultural, microscopic and molecular techniques. The pathogenicity of the fungal isolates was proven by inoculating the isolates onto fresh, mature plantain fruits. The ethanol and methanol extracts of the selected botanicals were tested against the isolated fungi *in vitro* while the radial growth of the fungi were measured. Analysis of variance was carried out on the results obtained while means were compared using Least Significant Difference ( $P < 0.05$ ).

**Results:** The isolates obtained were identified as *Fusarium moniliforme* and *Rhizopus stolonifer* with the former being more virulent. In the *in vitro* screening, both botanicals showed a high degree of fungicidal activity by inhibiting the mycelia growth of the rot fungi. Ethanol extracts of both plants were more effective in the suppression of the fungal growth than the methanol extracts.

**Conclusion:** It is therefore concluded that the extracts of *Moringa oleifera* and *Ageratum conyzoides* inhibited the fungal pathogens causing spoilage of plantain *in vitro*.

**Key words:** *Moringa oleifera*, *Ageratum conyzoides*, Pathogenicity, *in vitro*

#### 1. INTRODUCTION

Plantains (*Musa paradisiaca* L.) is one of the most important food crops in many African countries such as Nigeria, DRC, Cote d'Ivoire and Nigeria (Adheka *et al.*, 2018; Tenkuoano *et al.*, 2019). It contributes to the fight ~~against~~ **for** food security, alleviates hunger globally and serves as an important staple food for both rural and urban populace (USDA, 2012). It is used for making chips, flour, flakes, cakes, fried plantain, roasted plantain, and so many other forms of culinary provisions (Ojeniran *et al.*, 2018). It is considered a highly nutritious fruit with the presence of a wide array of the essential nutrients and in the appropriate mix (Okareh *et al.*, 2015; Oduje *et al.*, 2015).

Despite the importance of the produce, its production is threatened locally and globally by a complex of factors, namely: increase pest and disease pressures including postharvest rot amongst many others (Lescot and Ganry, 2010; Chabi *et al.*, 2018; Tenkuoano *et al.*, 2019). Consumption of fruit and vegetable products has dramatically increased in Nigeria by more than 40% during the past few decades. It is also estimated that about 30% of all fruits and vegetables produced is lost each year due to spoilage (Udoh *et al.*, 2015; Adewuyi-Samuel *et al.*, 2019b). In order to reduce postharvest loss, chemical control methods have been employed, but their use are restricted due to the hazardous effect caused to human health and the environment such as carcinogenicity, killing of non-target beneficial organisms, pollution and accumulation of toxic chemical residues (Ndakidemi *et al.*, 2016).

These observed side effects of chemical treatment necessitates a need to employ methods that are safer and eco-friendly in controlling plant diseases both in the field and during storage. The concept of biological approach such as the use of natural products (including plant extracts) in management of disease in plant is considered as a good alternative to the use of synthetic fungicide due to their less or no negative impacts on man and the environment; as such, it is considered environmentally friendly, easy to use and affordable (Olowe *et al.*, 2018; Oluwalana *et al.*, 2022). This approach existed as folklore

**Comment [T1]:** Ojeniran or Ojediran? see "references"

**Comment [T2]:** see "references"! 2008 or 2010?

medicine among many indigenous populations and is gaining popularity as an alternative means of controlling postharvest fungal rot of crops as reported in many researches (Odebode *et al.*, 2006; Silva *et al.*, 2014; Adewuyi-Samuel *et al.*, 2019b; Oluwalana *et al.*, 2022). Therefore, this research was aimed to examine the antifungal activities of leaves of *Ageratum conyzoides* and *Moringa oleifera* on rot fungi of plantain.

## **2. MATERIALS AND METHODS**

### **2.1 Sample Collection and Preparation**

Fresh and healthy leaves of *Ageratum conyzoides* and *Moringa oleifera* were obtained from the Botanical Garden, University of Ibadan, Nigeria. The plant materials were authenticated at the Herbarium unit of Botany Department, University of Ibadan. The leaves were washed under running water to remove the adhering dust particles, they were air dried under shade for 14 days and oven-dried to a constant weight and crispy texture. The dried leaves were ground to powder using a mortar and pestle and stored in sterile, air-tight, labeled containers until required (Okigbo and Omodamiro, 2007). Samples of spoiled plantain fruits were purchased from Bodija and Oje markets, Ibadan, Oyo State.

### **2.2 Isolation of fungi**

Spoilt plantain fruits were washed under running tap and surface sterilized with 70% ethanol for 30 seconds to remove surface contaminants. It was then rinsed in three changes of sterile distilled water and then blotted dry with sterile filter paper. The infected parts were cut into small fragments and plated directly onto freshly prepared Potato Dextrose Agar (PDA). The plates were incubated at  $28 \pm 2^{\circ}\text{C}$  for 3-5 days and were examined daily. The mixed cultures were subcultured until pure cultures of the isolates were obtained and maintained on PDA slants in McCartney bottles (Odebode *et al.*, 2006).

### **2.3 Molecular Characterization of Isolates**

#### **2.3.1 Fungal DNA Extraction**

All isolates were grown in PDA for 7 days at  $25^{\circ}\text{C}$ . A small lump of mycelia was collected from the pure culture and transferred into a 1.5ml Eppendorf tube containing lysis buffer (400 mM Tris-HCL (pH 8), 60 mM EDTA- pH 8.0, 150 mM NaCl and 1% sodium dodecyl sulphate). The tube was briefly vortexed to disrupt the mycelia, after which it was maintained at room temperature for 10 min. Potassium acetate (150  $\mu\text{l}$ ) was added into the Eppendorf tube and this was followed by brief vortexing. The tube and contents were finally centrifuged at  $13,000 \times g$  for 1 min. The supernatant was transferred to another 1.5 ml Eppendorf tube and centrifuged again as described above after which it was transferred into a new 1.5 ml Eppendorf tube and an equal volume of isopropyl alcohol was added. The tube was thoroughly mixed by inversion and centrifuged at  $13,000 \times g$  for 2 minutes and the supernatant was discarded. The resultant DNA pellet was washed in 300  $\mu\text{l}$  of 70% ethanol, after which it was spun at 10,000 rpm for 1 min and the supernatant was discarded. The DN2.3A pellet was air dried and dissolved in 50  $\mu\text{l}$  of  $1 \times$  Tris-EDTA. Purified DNA (1  $\mu\text{l}$ ) was used in 24  $\mu\text{l}$  of PCR mixture (Liu *et al.* 2000).

#### **2.3.2 PCR Amplification**

The extracted DNA was amplified by the Polymerase Chain Reaction. Each PCR mixture contained 10  $\mu\text{l}$  of Red taq ready mix, 0.5  $\mu\text{l}$  of each primer pair, 8  $\mu\text{l}$  of analytical grade sterile water (Sigma-Aldrich) and 5  $\mu\text{l}$  of genomic DNA in a total volume of 24  $\mu\text{l}$ . The thermocycling program used was an initial denaturation ( $94^{\circ}\text{C}$  for 5 minutes), 30 cycles of denaturation ( $94^{\circ}\text{C}$  for 1 min), annealing ( $60^{\circ}\text{C}$  for 1 minute) and elongation ( $72^{\circ}\text{C}$  for 1 minute), then a stabilization ( $72^{\circ}\text{C}$  for 5 minutes) (Michaelsen *et al.*, 2006). The genetic materials were electrophoresed on 2% agarose gel in Tris acetate- EDTA buffer and the gel was stained with ethidium bromide before observation in UV detector (Okoro *et al.*, 2009).

#### **2.3.3 DNA Sequencing**

**Comment [T3]:** check that in the final form, the title (subtitle) does not remain alone, only it, on the last line and that the rest of the text begins on the other page. At least one line of the text must follow the title on the same page.

The sequence was determined at Laboratory of Mycology, Department of Environmental Science, University of Pavia, Pavia, Italy. The identity of the isolates were determined against known sequences in the GenBank using BLAST (Basic Local Alignment Search Tool).

#### 2.4 Pathogenicity Test

This was carried out using the method of Chukwura *et al.* (2010). Mature, fresh, healthy pineapple fruits were washed under tap water, rinsed with sterile distilled water, surface sterilized with 75% ethanol and blotted dry with filter paper. Holes were made in each of the fruits with a sterile 4mm Cork borer. Each of the isolated fungi was inoculated into the fruits and the cores of the fruits were aseptically replaced. The holes were sealed with petroleum jelly to prevent contamination. The fruits used as the control experiments were not inoculated. All experiments were carried out in triplicates and placed in clean polythene bags, moistened with wet balls of absorbent cotton wool to create a humid environment and incubated at room temperature for ten days. The samples were sectioned through the site of inoculation and examined for lesion development. Infected portions were aseptically transferred onto freshly prepared PDA to isolate microorganisms responsible for the infections.

#### 2.5 Solvent Extraction

Extraction of plant materials was carried out using modified procedures described by Okigbo and Omodamiro (2007). About 400g of each plant powder were soaked in ethanol and methanol separately in the ratio 1:5 (w/v) for 3 days in tightly sealed vessels at room temperature accompanied by intermittent stirring using a sterile glass rod. The suspensions were thereafter filtered through sterile muslin cloth, decanted and then filtered using sterile Whatman No. 1 filter paper inserted in a funnel. The filtrates were concentrated under vacuum to dryness using rotary evaporator at 40°C to obtain the crude extracts.

#### 2.6 In Vitro Antifungal Assay

Two millilitre (2ml) from each of the concentration of the extracts (500, 250 and 125 mg/mL) was dispensed into 9 cm diameter petri dish and agitated thoroughly with molten PDA forming Potato Dextrose Leaf extract Agar (PDLA). The agar extract mixture was allowed to solidify and then inoculated centrally with a 5mm diameter mycelia disc obtained from 5-day old culture of each of the test fungi. PDA plates inoculated with the test fungi but without the extract served as positive control while PDA plates inoculated with the test fungi with organic solvent served as negative control. All the plates were incubated at 28±2°C, after which the mycelia growth was measured for seven days at 24-hour interval. All the treatments were set up in triplicates (Oluwalana *et al.*, 2022).

#### 2.7 Statistical Analysis

Data collected were subjected to analysis of variance. Significant means were separated using Duncan Multiple Range Test at probability level of 0.05 (Cary, 2003).

### 3. RESULTS

Two isolates obtained from the sample were identified as *Fusarium moniliforme* and *Rhizopus stolonifer*.

#### 3.1 Phylogenetic relationships between the isolated *Fusarium moniliforme* strain FM and other strains already documented in the NCBI

It was observed that this strain showed high similarities with six other fungi strains that were already documented on NCBI. This strain shares common ancestral lineage with other six fungi strains. It is more related to *Neocosmopora macrospora* NR163291 and *Neocosmopora perseae* NR164415. These two fungi share common ancestral lineage with *Neocosmopora gamsii* NR159548 which share common ancestral lineage with strain NR163531, NR130690, and NR164424 Figure.2. This was further affirmed in a molecular alignment study as presented in Figure 1.

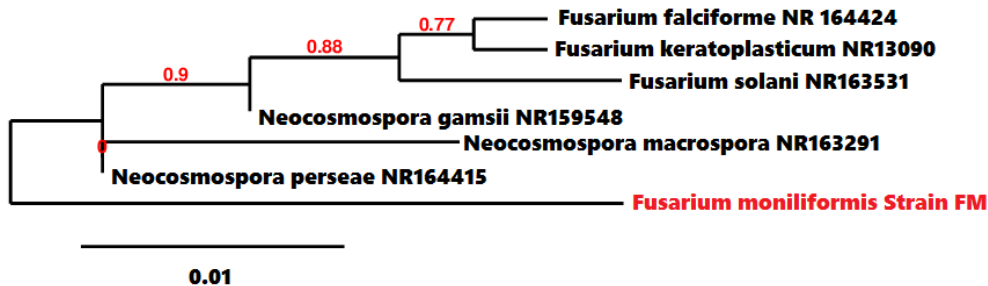


Figure 1: Phylogenetic relationship between the isolated *Fusarium moniliforme* strain FM and similar fungal strains already documented in **NCBI (National Center for Biotechnology Information, USA)**

### 3.2 Phylogenetic relationships between the isolated *Rhizopus stolonifer* strain PF and other strains already documented in the NCBI

It was observed that this strain showed high similarities with six other fungi strains that were already documented on NCBI. This strain is closely related and shares common ancestral lineage with other fungus strain *Rhizopus koreanus* NR164543, they both shared common ancestral lineage with other strains *Rhizopus caespitosus* NR137056. This strain is similar to other groups of fungi; NR103636 and NR152951 which are also sharing common ancestral lineage to other fungal groups; NR103616 and NR103555 as shown in Figure 2. This was further affirmed in a molecular alignment study as presented in Figure 2

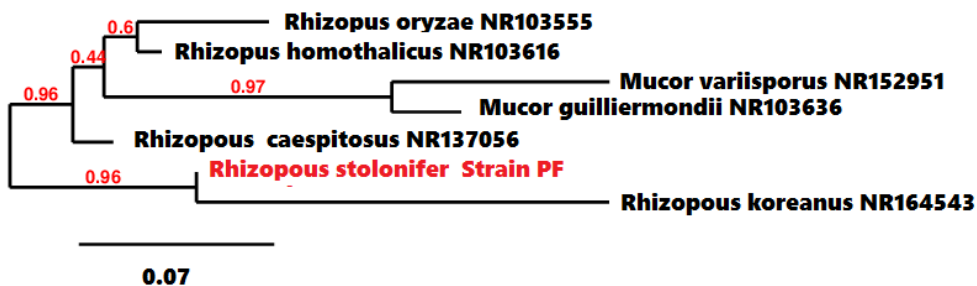


Figure 2: Phylogenetic relationship between the isolated *Rhizopus stolonifer* strain PF and similar fungal strains already documented in NCBI

### 3.3 Pathogenicity of spoilage fungi causing rots in plantain

All the fungi isolated from naturally infected rotten plantain samples were able to re-produce similar rot symptoms when re-inoculated into healthy plantain fruits (Table 1). It was also observed from the table that both *F. moniliforme* and *R. stolonifer* caused varying levels of virulence. Visible rot symptoms were not observed on days 1-3 of incubation in the artificially infected plantain fruits as well as the control. Microbial deterioration of the plantain samples began on Day 4 with the sample inoculated with *R. stolonifer* showing a higher level of deterioration. As the incubation period progressed from Day 5 to the

**Comment [T4]:** When you use some acronyms in a text for the first time, you must insert what they mean in parentheses. Then it is no longer necessary. You first use the acronym NCBI in figure. This is necessary, because your paper is addressed to a wider international audience, maybe not all of them work in the field and know what a certain acronym means. it is mandatory in scientific papers.

**Comment [T5]:** space between 3.2 and Phylogenetic... check it out everywhere!

7<sup>th</sup> day, the sample inoculated with *F. moniliforme* showed a greater deterioration and this was significant on the 7<sup>th</sup> day.

**Table 1: Pathogenicity of fungal species isolated from rotten plantain samples**

Fungal Isolate	Rot Formation (cm)						
	Day 1	Day 2	Day 3	Day 4	Day 5	Day 6	Day 7
Control	0.00	0.00	0.00	0.00 <sup>c</sup>	0.00 <sup>c</sup>	1.27 <sup>c</sup>	1.97 <sup>c</sup>
<i>Fusarium moniliforme</i>	0.00	0.00	0.00	1.00 <sup>b</sup>	2.53 <sup>a</sup>	2.90 <sup>ab</sup>	3.17 <sup>a</sup>
<i>Rizhopus stolonifer</i>	0.00	0.00	0.00	1.43 <sup>a</sup>	2.10 <sup>ab</sup>	2.53 <sup>b</sup>	2.83 <sup>b</sup>

### 3.4 Antifungal activity of ethanol and methanol extract of *Moringa oleifera* on isolated fungal

Table 2 shows the mycelia growth of *F. moniliforme* and *R. stolonifer* after treatment with ethanol and methanol extracts of *Moringa oleifera*. The ethanol and methanol extracts of *M. oleifera* were effective in the control of both *F. moniliforme* and *R. stolonifer* with improving efficiency as the concentration increased from 125mg/mL to 500mg/mL. At low concentration (125mg/mL), the radial growth was high showing a poor inhibition of *F. moniliforme* and *R. stolonifer* in ethanol and methanol extracts of the botanical. Against both fungi, the ethanol extract was more effective than the methanol extract while *F. moniliforme* was more sensitive to *M. oleifera* extracts.

somehow you have to rearrange the text, so as not to leave so much free space...

**Comment [T6]:** always a space between the number and the unit of measure that follows it. Check everywhere!

Why is this page empty?

UNDER PEER REVIEW

**Table 2: Antifungal activity of *Moringa oleifera* extract on isolated fungi**

Radial Mycelial Growth Measurement (cm)									
Fungal Isolate	Extracts	Concentration (mg/ml)	Days						
			Day 1	Day 2	Day 3	Day 4	Day 5	Day 6	Day 7
<i>Fusarium moniliforme</i>	Ethanol Extract	125	0.43±0.03 <sup>abc</sup>	0.65±0.10 <sup>bcd</sup>	0.91±0.34 <sup>bcd<sup>ef</sup></sup>	1.3±0.28 <sup>efg</sup>	1.75±0.27 <sup>fg</sup>	1.93±0.74 <sup>def</sup>	2.37±0.68 <sup>ef</sup>
		250	0.42±0.03 <sup>abc</sup>	0.63±0.08 <sup>abcd</sup>	0.84±0.10 <sup>bcd<sup>e</sup></sup>	1.04±0.14 <sup>cde</sup>	1.45±0.15 <sup>de</sup>	1.63±0.11 <sup>cd</sup>	1.82±0.16 <sup>cd</sup>
		500	0.32±0.03 <sup>ab</sup>	0.33±0.04 <sup>a</sup>	0.35±0.05 <sup>a</sup>	0.43±0.10 <sup>a</sup>	0.53±0.06 <sup>a</sup>	0.61±0.07 <sup>a</sup>	0.77±0.13 <sup>a</sup>
	Methanol Extract	125	0.42±0.08 <sup>abc</sup>	0.53±0.08 <sup>abc</sup>	0.88±0.03 <sup>bcd<sup>ef</sup></sup>	1.22±0.03 <sup>defg</sup>	1.65±0.05 <sup>ef</sup>	1.85±0.05 <sup>de</sup>	1.89±0.07 <sup>cd</sup>
		250	0.3±0.00 <sup>a</sup>	0.42±0.10 <sup>ab</sup>	0.72±0.03 <sup>bcd</sup>	0.98±0.03 <sup>bcd</sup>	1.23±0.15 <sup>cd</sup>	1.62±0.03 <sup>cd</sup>	1.64±0.04 <sup>cd</sup>
		500	0.33±0.06 <sup>abc</sup>	0.53±0.13 <sup>abc</sup>	0.7±0.05 <sup>bc</sup>	0.73±0.03 <sup>b</sup>	0.88±0.08 <sup>b</sup>	1.05±0.09 <sup>b</sup>	1.17±0.15 <sup>ab</sup>
	Control	Ethanol	0.37±0.06 <sup>abc</sup>	0.64±0.04 <sup>bcd</sup>	0.98±0.03 <sup>cdef</sup>	1.4±0.05 <sup>fg</sup>	1.65±0.05 <sup>ef</sup>	2.27±0.06 <sup>efg</sup>	2.82±0.03 <sup>fg</sup>
		Methanol	0.37±0.12 <sup>abc</sup>	0.7±0.1 <sup>bcd<sup>e</sup></sup>	0.95±0.05 <sup>bcd<sup>ef</sup></sup>	1.45±0.13 <sup>g</sup>	1.99±0.02 <sup>gh</sup>	2.55±0.05 <sup>gh</sup>	2.55±0.05 <sup>efg</sup>
		Control	0.42±0.03 <sup>abc</sup>	0.88±0.06 <sup>de</sup>	1.3±0.1 <sup>ghi</sup>	1.83±0.08 <sup>h</sup>	2.52±0.13 <sup>j</sup>	2.94±0.14 <sup>h</sup>	3.57±0.10 <sup>h</sup>
<i>Rhizopus stolonifer</i>	Ethanol Extract	125	0.48±0.16 <sup>cd</sup>	0.8±0.00 <sup>cde</sup>	1.17±0.15 <sup>fgh</sup>	1.78±0.03 <sup>h</sup>	2.09±0.11 <sup>hi</sup>	2.33±0.21 <sup>fg</sup>	2.9±0.1 <sup>g</sup>
		250	0.5±0.05 <sup>cd</sup>	0.8±0.05 <sup>cde</sup>	1.03±0.06 <sup>defg</sup>	1.43±0.03 <sup>g</sup>	1.75±0.05 <sup>fg</sup>	1.97±0.03 <sup>def</sup>	2.45±0.05 <sup>efg</sup>
		500	0.42±0.10 <sup>abc</sup>	0.52±0.15 <sup>abc</sup>	0.62±0.24 <sup>ab</sup>	0.82±0.20 <sup>bc</sup>	1.1±0.1bc	1.27±0.33 <sup>bc</sup>	1.6±0.78 <sup>bc</sup>
	Methanol Extract	125	0.77±0.03 <sup>e</sup>	0.98±0.03 <sup>ef</sup>	1.43±0.03 <sup>hi</sup>	1.90±0.05 <sup>h</sup>	2.38±0.03 <sup>j</sup>	2.68±0.03 <sup>gh</sup>	2.79±0.01 <sup>fg</sup>
		250	0.5±0.05 <sup>cd</sup>	0.8±0.05 <sup>cde</sup>	1.1±0.1e <sup>fg</sup>	1.88±0.03 <sup>h</sup>	1.98±0.03 <sup>gh</sup>	2.37±0.06 <sup>fg</sup>	2.4±0.00 <sup>efg</sup>
		500	0.47±0.08 <sup>bcd</sup>	0.75±0.05 <sup>cde</sup>	0.87±0.03 <sup>bcd<sup>ef</sup></sup>	1.15±0.12 <sup>def</sup>	1.73±0.04 <sup>efg</sup>	2±0.00 <sup>def</sup>	2.1±0.1 <sup>de</sup>
	Control	Ethanol	0.6±0.05 <sup>d</sup>	1.18±0.18 <sup>f</sup>	1.48±0.10 <sup>j</sup>	1.78±0.03 <sup>h</sup>	2.3±0.1 <sup>ij</sup>	2.65±0.05 <sup>gh</sup>	2.88±0.29 <sup>g</sup>
		Methanol	0.6±0.05 <sup>d</sup>	0.9±0.05 <sup>de</sup>	1.15±0.13 <sup>efgh</sup>	1.78±0.03 <sup>h</sup>	2.3±0.1 <sup>ij</sup>	2.57±0.8 <sup>h</sup>	2.9±0.05 <sup>g</sup>
		Control	1.02±0.18 <sup>f</sup>	1.65±0.44 <sup>g</sup>	2.08±0.38 <sup>j</sup>	2.58±0.38 <sup>i</sup>	3.08±0.038 <sup>k</sup>	3.53±0.46 <sup>i</sup>	4.08±0.8 <sup>i</sup>

Values are means of three replicates. Means having the same superscript letter are not significantly different ( $\alpha_{0.05}$ ) according to Duncan MultipleRangeTest

### 3.5 Antifungal activity of ethanol and methanol extract of *Ageratum conyzoides* on isolated fungal

Table 3 shows the mycelia growth of *F. moniliforme* and *Rhizopus stolonifer* after treatment with ethanol and methanol extracts of *Ageratum conyzoides*. The ethanol and methanol extract of *A. conyzoides* were efficient as antifungal agents against both *F. moniliforme* and *R. stolonifer* compared with the control at various degrees of efficiency. The ethanol extract was efficient at both 250mg/ml and 500mg/ml concentrations against *F. moniliforme*. The most significant inhibition observed by the extent of radial growth in the Petri dish, occurred at the highest concentration and beginning from the third day of incubation. The methanol extract was also most effective at 500mg/ml concentration. The methanol and ethanol extracts showed similar inhibitions of *F. moniliforme* at 500mg/ml through the days of incubation. However, the inhibition at the 7<sup>th</sup> day were significantly different, with the ethanol extract being more effective. Against *R. stolonifer*, the ethanol extract of *A. conyzoides* was effective from the first 24 hours of incubation until the end of the incubation while the inhibition of the fungi by the methanol extract was most significant from the fourth day of incubation and both at the highest concentration. From the fourth day of incubation, the ethanol extract was more effective than the methanol extract as observed from the radial growth of the fungi.

somehow you have to rearrange the text, so as not to leave so much free space...

UNDER PEER REVIEW

**Table 3: Antigungal activity *Ageratum conyzoides* extract on isolated fungi**

Radial Mycelial Growth Measurement (cm)									
Fungal Isolate	Extracts	Concentrati on (mg/ml)	Day 1	Day 2	Day 3	Day 4	Day 5	Day 6	Day 7
<i>Fusarium moniliforme</i>	Ethanolic Extract	125	0.3±0.00 <sup>a</sup>	0.58±0.19 <sup>abcd</sup>	0.93±0.32 <sup>bcd</sup>	1.35±0.41 <sup>cd</sup>	1.63±0.5.9 <sup>d</sup>	2.00±0.69 <sup>de</sup>	2.23±0.93 <sup>defg</sup>
		250	0.62±0.20 <sup>def</sup>	0.65±0.3 <sup>abcd</sup>	0.72±0.25 <sup>abcd</sup>	0.88±0.30 <sup>ab</sup>	1.08±0.24 <sup>ab</sup>	1.29±0.09 <sup>bc</sup>	1.78±0.29 <sup>bcd</sup>
		500	0.45±0.17 <sup>abcdef</sup>	0.48±0.19 <sup>abc</sup>	0.47±0.16 <sup>a</sup>	0.67±0.12 <sup>a</sup>	0.75±0.87 <sup>a</sup>	1.03±0.06 <sup>ab</sup>	1.52±0.23 <sup>b</sup>
	Methanolic Extract	125	0.32±0.03 <sup>ab</sup>	0.50±0.05 <sup>abc</sup>	0.62±0.04 <sup>ab</sup>	0.93±0.08 <sup>ab</sup>	1.25±0.05 <sup>bc</sup>	1.66±0.15 <sup>cd</sup>	2.1±0.1c <sup>def</sup>
		250	0.35±0.05 <sup>a</sup>	0.5±0.09 <sup>abc</sup>	0.65±0.2 <sup>abc</sup>	0.93±0.08 <sup>ab</sup>	1.13±0.12 <sup>b</sup>	1.43±0.08 <sup>bc</sup>	1.65±0.05 <sup>bc</sup>
		500	0.33±0.06 <sup>abc</sup>	0.33±0.06 <sup>a</sup>	0.48±0.06 <sup>a</sup>	0.64±0.03 <sup>a</sup>	0.72±0.04 <sup>a</sup>	0.82±0.06 <sup>a</sup>	0.93±0.12 <sup>a</sup>
		Ethanol	0.37±0.06 <sup>abc</sup>	0.64±0.04 <sup>abcd</sup>	0.98±0.03 <sup>cdef</sup>	1.4±0.05 <sup>cd</sup>	1.65±0.05 <sup>d</sup>	2.27±0.06 <sup>ef</sup>	2.82±0.03 <sup>h</sup>
		Methanol	0.37±0.12 <sup>abc</sup>	0.7±0.1 <sup>bcd</sup>	0.95±0.05 <sup>bdef</sup>	1.45±0.13 <sup>de</sup>	1.99±0.02 <sup>de</sup>	2.55±0.05 <sup>fg</sup>	2.55±0.05 <sup>fgh</sup>
		Control	0.42±0.03 <sup>abcde</sup>	0.88±0.06 <sup>de</sup>	1.3±0.1 <sup>fg</sup>	1.83±0.08 <sup>f</sup>	2.52±0.13 <sup>f</sup>	2.94±0.14 <sup>g</sup>	3.57±0.10 <sup>i</sup>
<i>Rhizopus stolonifer</i>	Ethanolic Extract	125	0.55±0.17 <sup>cdef</sup>	0.77±0.23 <sup>bcd</sup>	0.92±0.25 <sup>bcd</sup>	1.22±0.52 <sup>bcd</sup>	1.6±0.18 <sup>cd</sup>	2.03±0.17 <sup>de</sup>	2.48±0.23 <sup>efgh</sup>
		250	0.42±0.03 <sup>abcdef</sup>	0.67±0.08 <sup>abcd</sup>	0.75±0.00 <sup>abcd</sup>	1.07±0.12 <sup>bc</sup>	1.59±0.05 <sup>cd</sup>	1.9±0.05 <sup>de</sup>	2.3±0.22 <sup>efg</sup>
		500	0.38±0.02 <sup>abc</sup>	0.45±0.09 <sup>ab</sup>	0.68±0.14 <sup>abcd</sup>	0.95±0.22 <sup>ab</sup>	1.08±0.2 <sup>ab</sup>	1.25±0.13 <sup>bc</sup>	1.32±0.19 <sup>ab</sup>
	Methanolic Extract	125	0.63±0.08 <sup>f</sup>	0.83±0.03 <sup>cd</sup>	1.12±0.16 <sup>ef</sup>	1.5±0.00 <sup>def</sup>	1.88±0.12 <sup>d</sup>	2.1±0.1 <sup>e</sup>	2.73±0.03 <sup>gh</sup>
		250	0.52±0.10 <sup>bcd</sup>	0.72±0.03 <sup>bcd</sup>	1.02±0.08 <sup>def</sup>	1.45±0.05 <sup>de</sup>	1.78±0.03 <sup>d</sup>	2.07±0.06 <sup>de</sup>	2.23±0.15 <sup>defg</sup>
		500	0.4±0.09 <sup>abc</sup>	0.61±0.04 <sup>abcd</sup>	1.00±0.06 <sup>cdef</sup>	1.4±0.05 <sup>cd</sup>	1.7±0.09 <sup>d</sup>	1.84±0.10 <sup>de</sup>	2.03±0.06 <sup>cde</sup>
		Ethanol	0.6±0.05 <sup>def</sup>	1.18±0.18 <sup>e</sup>	1.48±0.10 <sup>g</sup>	1.78±0.03 <sup>ef</sup>	2.3±0.1 <sup>ef</sup>	2.65±0.05 <sup>fg</sup>	2.88±0.29 <sup>h</sup>
		Methanol	0.6±0.05 <sup>def</sup>	0.9±0.05 <sup>de</sup>	1.15±0.13 <sup>ef</sup>	1.78±0.03 <sup>ef</sup>	2.3±0.1 <sup>ef</sup>	2.57±0.8 <sup>fg</sup>	2.9±0.05 <sup>h</sup>
		Control	1.02±0.18 <sup>g</sup>	1.65±0.44 <sup>f</sup>	2.08±0.38 <sup>h</sup>	2.58±0.38 <sup>g</sup>	3.08±0.038 <sup>g</sup>	3.53±0.46 <sup>h</sup>	4.08±0.8 <sup>j</sup>

Values are means of three replicates. Means having the same superscript letter are not significantly different ( $\alpha_{0.05}$ ) according to Duncan MultipleRangeTest

#### 4. DISCUSSION

In this study, fungi found associated with the spoilage plantain fruits were identified as *Fusarium moniliforme* and *Rhizopus stolonifer*. Similar organisms have been isolated from watermelon, pepper, banana, plantain and pawpaw as reported by Adewuyi-Samuel *et al.* (2019), Akinyemi and Liamngee (2018), Udoh *et al.* (2015) and Singh *et al.* (2012). These pathogens may have infected the fruits through mechanical injury or wound during harvesting, transportation and storage thereby resulting in its reduction in quantity and quality.

All the isolated fungi were able to replicate the rot symptoms when re-inoculated on healthy plantain fruits, which proves that the isolates are responsible for the spoilage of the fruits. This was in line with the reports by Aslam *et al.* (2018) and Baiyewu *et al.* (2007) who stated that the above named organisms are actual pathogens of fruit crops. However, it was also observed that *F. moniliforme* had higher degree of deterioration than *R. stolonifer*. This agrees with the results obtained by Hassan *et al.* (2017) who reported *F. moniliforme* as one of the major causal agents of decay of banana fruit. Also, a similar observation was submitted by Baiyewu *et al.* (2007) who reported that *F. moniliforme* was among the major fungi responsible for rapid disintegration of pawpaw fruit.

The extracts of *Ageratum conyzoides* and *Moringa oleifera* had varying degree of effect on each of the fungal pathogen. The ethanol extracts were more effective in the inhibition of fungi growth in the *in vitro* experiments as compared to the methanol extracts of the tested botanicals. This is in agreement with the findings of Kaur *et al.* (2011) who reported that antifungal activity of the ethanol extracts appeared to be effective since ethanol could extract a wide range of bioactive components. Similarly, Adewuyi –Samuel *et al.* (2019a) affirms the efficiency of ethanol as an extraction solvent of phytochemical compounds. However, both extracts of ethanol and methanol were effective in controlling the growth of the spoilage pathogens in which there was reduction in mycelia diameter with increasing concentration of extracts. The work of Suraka *et al.* (2021) reported similar results where methanol and ethanol extracts of *Moringa oleifera* leaves were found to be effective against *Aspergillus flavus* and *Rhizopus stolonifer*. Similarly, Neela *et al.* (2014) reported the efficacy of ethanol leaf extract of *Moringa oleifera* against *Fusarium oxysporum* among tested plants. Rehman *et al.* (2020) submitted that the methanol extract of *Moringa oleifera* inhibited mycelia growth of the selected fungal species. The effect of these extracts on the tested fungal species lie in the bioactive constituents which they contain, including tannins, alkaloids, flavonoids phenols etc. (Anysor *et al.*, 2011; Onegbu *et al.*, 2020). In addition, *Ageratum conyzoides* extract, significantly reduced the spoilage fungal biomass. Earlier studies have shown similar antifungal activities of ethanol leaf extracts of this weed against different fungal species such as *Fusarium lateritium*, *Fusarium solani*, *Cochliobolus lunatus* (Ilondu, 2013) and *Phytophthora megakarya* (Ndacnou *et al.*, 2020). Also, methanol extract of this botanical have been effective against different fungal pathogens such as *Fusarium oxysporum* and *Macrophomina phaseolina* as reported by Nur Hazirah *et al.* (2023) and Rashmi and Rajkumar (2011) respectively. According to Sukrasno (2017), the inhibition of the fungi might be due to the presence of antifungal compound in *Ageratum conyzoides* which have been reported to be coumarin. Coumarin have been widely distributed in several plant families such as Asteraceae in which *Ageratum conyzoides* belongs (Razavi, 2011).

#### 5. CONCLUSION

This study revealed the potential of using biopesticides which are biodegradable and non-toxic as a substitute to the use of expensive synthetic chemicals and other methods for plant disease control. The use of botanicals as a means of bio control, reduces over-dependence on synthetic chemicals resulting in lower cost of production. The suppression of the fungal pathogens, strongly suggests that the active components of the indigenous plants are suitable for the control of fungi causing spoilage of plantain. Thus, it can serve as a better alternative to the use of synthetic fungicides. The botanicals used in this study are feasible and are not hazardous to the environment.

#### REFERENCE

Comment [T7]: a or b?

Comment [T8]: see "references"!

Comment [T9]: see T3!

Adewuyi-Samuel OB, Fatoki OA, Oso OO, Okedara OE, Shannaika. Bio-Treatment of Spoilage Fungi Associated with Postharvest Deterioration in Citrullus lanatus Thumb. World Journal of Dairy & Food Sciences. 2019a;14 (1): 34-39.

Adewuyi-Samuel OB, Etaware PM, Shennaika OA, Odebode AC. Bio-Treatment Of Fruitlet Core Rot Associated With Fungi-Induced Postharvest Deterioration In Ananas Comosus Linn. (Pineapple). International Journal of Innovative Research and Advanced Studies. 2019b;6(8): 96-103.

Adheka JG, Dheda DE, Karamura D, Blomme G, Swennen R, DeLanghe E. The Morphological diversity of plantain in the Democratic Republic of Congo. Sci Hortic. 2018; 234:126-133.

Akinyemi BK, Liamngee K. Isolation and Identification of Fungi Causing Decay in Pepper (Capsicum spp) from Selected Markets in Makurdi. Asian Journal of Research in Crop Science. 2018; 1(2):1-6.

Akinyemi SOS, Aiyelaagbe IOO, Akyeampong E. Plantain (Musa spp) cultivation in Nigeria: a review of its production, marketing and research in the last two decades. Acta Hort. 2010; 879:211-218.

Anyasor GN, Aina DA, Olushola M, Aniyikaye AF. Phytochemical constituent, proximate analysis, antioxidant, antibacterial and wound healing properties of leaf extract of Chromolaena odorata. Ann. Biol. Res. 2011; 2:441-451.

Aslam MF, Irshad G, Naz F, Abbasi NA. Morpho-molecular identification of Rhizopus stolonifer causing postharvest soft rot of Loquat (Eriobotrya japonica). Mycopath. 2018; 16(2): 117-121.

Ayanwale BA, Oluwole, FA, Ojo M. Innovation opportunities in plantain production in Nigeria. Guide Book 1. Forum for Agricultural Research in Africa (FARA), Accra Ghana.2016;1-20.

Baiyewu RA, Amusa NA, Ayoola OA, Babalola OO. Survey of the post harvest diseases and aflatoxin contamination of marketed pawpaw fruit (Carica papaya L) in South Western Nigeria. African Journal of Agricultural Research. 2007; 2(4): 178-181.

Cary NC. SAS Institute Inc, SAS 9.1 for Windows, SAS Institute Inc. 2003

Chabi MC, Dassou AG, Dossou-Aminon I, Ogouchoro D, AmanBO, Dansi A. Banana and plantain production systems in Benin: ethnobotanical investigation, varietal diversity, pests and implications for better production. J Ethnobiol Ethnomed. 2018;14(1):78. doi: 10.1186/s13002-018-0280-1.

Chukwuka KS, Okonko IO, Adekunle AA. Microbial ecology of organisms causing pawpaw (Carica papaya L.) Fruit decay in Oyo State, Nigeria. American-Eurasian J.Toxicol. Sci. 2010;2(1): 43-50.

Ilondu EM. Phytochemical composition and efficacy of ethanolic leaf extracts of some Vernonia species against two phytopathogenic fungi. J Biopest. 2013; 6:165–172.

Kaur P, Nilesh K, Shivananda TN, Gagandeep K. Journal of Medicinal Plants Research. 2011; 5(22): 5356-5359.

Lescot T, Garry J. Plantain (Musa spp.) cultivation in Africa: A brief summary of developments over the previous two decades. In: Proceedings of the International Conference on banana and plantain in Africa: harnessing international partnerships to increase research impact, Mombasa, Kenya, October 5-9, 2008.

Dubois T. (ed.), Hauser S. (ed.), Staver Charles (ed.), Coyne D. (ed.). ISHS-Section Banana and Plantain, IITA. Louvain ISHS [Belgique], pp. 445-455. 2010 (Acta Horticulturae, 879) ISBN 978-90-6605-593-3 International Conference on Banana and Plantain in Africa: Harnessing international partnerships to increase research impact, Mombasa, Kenya, 5 October 2008/9 October 2008. [http://www.actahort.org/books/879/879\\_49.htm](http://www.actahort.org/books/879/879_49.htm). 2010.

Liu D, Coloe S, Baird R, Pedersen J. Rapid mini-preparation of fungal DNA for PCR. Journal of Clinical Microbiology.2000;38(1): 471.

**Comment [T10]:** I did not find in the main text of the paper cited from this title!

**Comment [T11]:** Anyasor or Anysor?

**Comment [T12]:** I did not find in the main text of the paper cited from this title!

**Comment [T13]:** I did not find in the main text of the paper cited from this title!

**Comment [T14]:** 2008 or 2010?

**Comment [T15]:** Why here and not before "Ilondu EM"? The first author's name begins with the letter D!

Ndacnou MK, Pantaleon A, Tchinda, JBS, Mangapche ELN, Keumedjio F, Boyoguemo DB. Phytochemical study and anti-oomycete activity of *Ageratum conyzoides* Linnaeus. *Indust Crop Prod.* 2020;153:112589.

Ndakidemi B, Mtei K, Ndakidemi PA. Impacts of Synthetic and Botanical Pesticides as Beneficial Insects. *Agricultural Sciences.* 2016; 7: 364-372.

Neela FA, Sonia IA, Shamsi S. Antifungal Activity of Selected Medicinal Plant Extract on *Fusarium oxysporum* Schlechtthe Causal Agent of *Fusarium Wilt Disease* in Tomato. *American Journal of Plant Sciences.* 2014; 5: 2665-2671.

Nur Hazirah, MF, Hamizah O, Wan Natasya WA. Antifungal activity of *Ageratum conyzoides* extract against *Fusarium oxysporum* in *Musa spp.* *Earth and Environmental Science* 2023; 1182: 012074.

Odebode AC, Joseph CC, Jonker SA, Wachira SW. Antifungal activities of constituents from *Uvaria schefferi* and *Abotrys brachpetalas*. *Journal of Agricultural Science.* 2006; 51(1): 79-86.

Oduje AA, Oboh A, Ayodele AJ, Stephen AA. Assessment of the nutritional, antinutritional and antioxidant capacity of unripe, ripe and over ripe plantain (*Musa paradisiaca*) peels. *Int. J. Adv. Res.* 2015; 3(2): 63-72.

Ojediran EO, Adewumi MO, Falola A, Ibrahim HK, Belewu KY, Oyedeji OA. Analysis of the determinants of plantain supply by small holder farmers in Osun State, Nigeria. *Agrosearch.* 2018; 18(1): 15 – 24

Comment [T16]: see T1

Okareh OT, Adeolu AT, Adepoju OT. Proximate and mineral composition of plantain (*Musa paradisiaca*) wastes flour; a potential nutrient source in the formulation of animal feeds. *Afri. J. Food Sci. and Tech.* 2015;6(2): 53-57.

Okigbo, RN, Omodamiro, OD. Antimicrobial effect of leaf extracts of Pigeon Pea (*Cajanus cajan* (L.) Mills.) on some human pathogens. *J. Herbs Spices Med. Pl.* 2007; 12(1-2): 117-127

Okoro CC, Amund OO, Eliora R. Plasmids of phenanthrene and dibenzothiophene-degrading bacteria isolated from produced water samples in oil production. *Int. J. Biol. Chem. Sci.* 2009; 3(2): 186-191.

Olowe OM, Olawuyi OJ, Sobowale AA, Odebode AC. Role of arbuscular mycorrhizal fungi as biocontrol agents against *Fusarium Verticillioides* causing ear rot of *Zea mays* L. (Maize). *Current Plant Biology.* 2018; 15: 30-37.

Oluwalana OA, Odebode AC, Sobowale, AA, Adewuyi-Samuel OB. The Effect of *Melanthera Scandens* and *Mimosa Pudica* on Fungi Causing Postharvest Deterioration of Cassava Root Tubers. *American Journal of Plant Biology.* 2022; 7(1): 73-80.

Onegbu V, Nkwoemeka N, Okey-Ndeche F, Obum-Nnadi C. Phytochemical and antibacterial Properties of *Moringa Oleifera* leaf extracts on *Escherichia coli* and *Staphylococcus aureus*. *Nigerian Journal of Microbiology.* 2020; 34(1):5145-5152.

Rashmi, S, Rajkumar HG. Preliminary Phytochemical Analysis and in Vitro Evaluation of Antifungal Activity of Five Invasive Plant Species against *Macrophomina Phaseolina* (Tassi) Goid. *International Journal of Plant Research.* 2011; (1): 11-15.

Razavi SM. Plant coumarins as allelopathic agents *Int J Biol Chem.* 2011;5(1): 86–90.

Rehman KU, Hamayun M, Khan SA, Khan SS, Wali S. Competence of Benzoin Tree (*Moringa Oleifera* L.) as Antibacterial and Antifungal Agent. *Advancements in Life Sciences.* 2020;7(3): 2310-5380.

Silva JL, Souza PE, Monteiro FP, Freitas MLO, Silva Júnior MB, Belan LL. Antifungal activity using medicinal plant extracts against pathogens of coffee tree. *Rev. Bras. Pl. Med., Campinas.* 2014; 16.3: 539-544.

Singh P, Mishra Ak, Tripathi NN. Assessment of mycoflora associated with postharvest losses of papaya fruits. *Journal of Agricultural Technology*. 2012; 8(3): 961-968.

Sukrasno S. Plant secondary metabolites for antifusarium and antiphytophthora. In: *Fusarium-Plant Diseases, Pathogen Diversity, Genetic Diversity, Resistance and Molecular Markers*. IntechOpen. 2017

Suraka B, Ibrahim D, Suleman K, Usman U, Usman SI. Antifungal activity of *Moringa oleifera* leaves crude extract against *Aspergillus flavus* and *Rhizopus stolonifer*. *Dutse Journal of Pure and Applied Sciences (DUJOPAS)*. 2021;7(4b): 2635-349

Tenkuoano A, Lamien N, Agogbua J, Amah D, Swennen R, Traore S, Thiemele D, Aby N, Kobenan K, Gnonhour G, Yao N, Astin G: Promising high-yielding tetraploid plantain-bred hybrids in West Africa. *Int J Agron olume*. 2019 |Article ID 3873198 | 8 pages

Udoh IP, Eleazar CI, Ogeneh BO, Ohanu ME. Studies on Fungi Responsible for the Spoilage/Deterioration of Some Edible Fruits and Vegetables. *Advances in Microbiology*. 2015; 5: 285-290.

USDA. United States Department of Agriculture. Nutrient data laboratory.2012. Retrieved July 25, 2020, from <http://www.nal.usda.gov/fnic/foodcomp/data/SR`8/sr18.html>.

Any title that can be found in the "references" chapter must have at least one citation in the main text of the work and vice versa, any citation mentioned in the text must correspond to a title that can be found in "references".

You have three titles in the bibliography that are not cited in the main text. fix this problem, it's mandatory!