

Enhancing Gerbera Micropropagation Efficiency and Genetic Fidelity Through Cytokinin and Auxin Combination Strategies

Abstract

The present investigation was carried out to assess the impact of 6-benzyladenine (BA) in conjunction with Indole-3-butyric acid (IBA) on gerbera explant establishment under micropropagation. Additionally, the effects of BA, either individually or in combination with Kinetin (KIN), on shoot proliferation in two Gerbera cultivars, namely Kormoran and Dolores was ~~also taken into consideration during the experiment~~ed too. Throughout the experiment, various morphological changes were documented occurring during these micropropagation phases and also monitored potential genetic alterations using SSR markers. The studies revealed that the combination of BA and IBA yielded exceptional results, achieving a 100% success rate in explant regeneration within the shortest time frame. Notably, when BA and IBA were applied at lower concentrations, the number of shoots generated was reduced. However, the most substantial proliferation of shoots was observed when the growth medium contained 4 mg of BA and 0.5 mg of IBA per litre. Furthermore, our investigation into genetic fidelity using SSR analysis revealed no detectable polymorphism between the mother plant and the micropropagated plantlets in both the Gerbera cultivars, affirming the reliability of the micropropagation method in preserving genetic consistency.

Keywords: Micropropagation, SSR markers, Somaclonal variation

Introduction

Gerbera (*Gerbera jamesonii*), commonly known as African daisy or Transvaal daisy, belongs to the Asteraceae family and is a perennial herb characterized by its deeply lobed leaves. This plant boasts a unique appearance, having vibrant and cheerful daisy-like blooms, making it a beloved choice for landscaping. It is highly sought after for its flowers which are majorly used as a decorative cut flower for bouquets and is also well-suited for planting in beds and pots. Gerbera flowers have a prolonged vase life, exhibit resilience during transportation, and offer a favorable market value (Chung *et al.*, 2016). The growing demand for Gerbera in the market has prompted researchers to explore ways to enhance both the quantity and quality of this crop. Among the various factors influencing its growth, the propagation method plays a pivotal role in determining quality and yield performance. However, the conventional method of propagation, such as rhizome divisions, falls short of meeting global demands, posing a challenge to the mass cultivation of Gerbera (Schiavo, 1995). Hence, the large-scale production of quality Gerbera planting material within a short timeframe can be achieved through micropropagation techniques (George *et al.*, 2008).

In micropropagation, one of the key determinants of morphogenesis is the application of plant growth regulators (PGRs). The balance between exogenous and endogenous hormone concentrations governs the induction of specific developmental pathways

Comment [WU1]: Method

Comment [WU2]: plant

Comment [WU3]: green space

Comment [WU4]: classical

and the regeneration of particular organs (Santner et al., 2009; Rademacher, 2015). Cytokinins, among the phytohormones, are recognized as major regulators of plant growth due to their cell division-inducing properties. Subsequently, their influence on various physiological, morphogenetic, and biochemical processes in plants, particularly in conjunction with other hormones, has been established (Nowakowska et al., 2019; Hallmark and Rashotte, 2019). Cytokinins promote the production of photosynthetically active pigments, inhibit chlorophyll breakdown, and enhance the concentration of total sugars in regenerated shoots by stimulating the photosynthetic system of plants (Hönig et al., 2018; Pacholczak and Nowakowska, 2019). Additionally, cytokinins play a vital role in protecting plants from oxidative stress by boosting the activity of antioxidative enzymes (Souza et al., 2019; Nowakowska and Pacholczak, 2020).

However, even under well-defined culture conditions, including the type and concentration of PGRs, variations in the regenerated material can occur, particularly at genetic and epigenetic levels (Rodríguez et al., 2012; Saha et al., 2016; Amin et al., 2018). Among the multiple variations, somaclonal variation which is characterized by genetic changes in somatic cells of vegetatively propagated plants is most commonly observed. Hence, it is crucial to characterize these modifications to establish genetic uniformity in micropropagated plants, ensuring their commercial quality (Larkin and Scowcroft, 1981). In this context, DNA markers serve several purposes, including assessing genetic variability in breeding material, identifying cultivars, confirming hybrid origins, and verifying genetic fidelity in *in vitro* regenerated plants (Podwyszynska et al., 2010; Bhattacharyya et al., 2017).

Among various DNA-based markers, Restriction Fragment Length Polymorphism (RFLP) are frequently used markers that can assess the genetic stability in tissue-cultured plants. However, this method involves expensive enzymes, a significant quantity of DNA, and radioactive materials, requiring extensive care and rendering it less suitable. In contrast, Random Amplified Polymorphic DNA (RAPD), Inter-Simple Sequence Repeats (ISSR), and Simple Sequence Repeats (SSR) markers offer advantages such as minimal DNA sample requirements, simplicity, speed, and non-radioactivity, making them suitable for analyzing clonal fidelity (Lakshmanan et al., 2007).

Therefore, the present study is designed to investigate the impact of cytokinins on establishment, shoot proliferation, and genetic stability in *in vitro* culture. Additionally, the research aims to develop a specific micropropagation system for the production of genetically identical and stable Gerbera plants for commercial purposes.

Material & method

Plant material

The present investigation was conducted on two cultivars of gerbera viz. “Kormoran” and “Dolores”, which were grown under polyhouse conditions at the Agri-Tourism Centre, Chaudhary Charan Singh Haryana Agricultural University, Hisar. Immature capitulum was used as an explant in the present study which were collected from plants grown under polyhouse conditions (Fig.1).

Comment [WU5]: in-vivo

Comment [WU6]: in-vivo

Sterilization of instruments and glassware

All the glass wares *viz.* test tubes, beakers, flasks, jam bottles, measuring cylinders, etc. used for the experiment were washed with 0.1% teepol solution followed by washing with tap water. Sterilization of all the instruments and other accessories was carried out with the help of an autoclave at 121°C for 20 min (15 lbs/inch²). At the time of inoculation, all the instruments and the laminar surface were wiped with ethyl alcohol. A hot air oven was used to dry the culture vessels used during the experiment. In addition, the UV light of the laminar air-flow chamber was kept on for 30- 40 min before use. At the time of inoculation, all the forceps, scalpels, scissors, etc. were dipped in spirit inside the laminar chamber and were frequently flame sterilized during the operation.

Comment [WU7]: cultivation,

Comment [WU8]: cultivation ,



Fig 1a. Gerbera cv. Kormoran

b. Gerbera cv. Dolores

Preparation of stock and working solution

The stock solution of cytokinins (BA and KIN) was prepared by dissolving 50 mg of BA or KIN in a few drops of 1N HCl and then the final volume was made to 50 ml by adding distilled water. Likewise, the stock solutions of IBA (Auxin) were prepared separately by dissolving 50mg of IBA in a few drops of 1N NaOH and the final volume was made to 50 ml by adding distilled water. All the prepared solutions of MS basal medium and growth regulators were stored in a refrigerator at 4°C till further use.

Comment [WU9]: double distillate water

Comment [WU10]: double distillate water

Multiplication phase medium and growth conditions

Initially, well-prepared explants were treated with 0.1% teepol solution for 15 min and washed with tap water for 10-15 min to remove the residue of teepol. Then the explants were treated with Bavistin (0.1%) for 20 min followed by washing with running tap water. The pre-treated explants were sterilized under a laminar air flow cabinet with HgCl₂ (0.1%) for 5 min and subsequently washed 3-4 times with sterile distilled water to remove the residue of HgCl₂ before inoculation. Capitulum segments, established on the Murashige and Skoog medium (MS) (Murashige and Skoog, 1962) with 1mg to 5 mg/L BA with 0.5 mg/L IBA. For the multiplication phase the MS medium was enriched with 2 mg/L or 4 mg/L or 6 mg/L 6-benzyladenine (BA)

Comment [WU11]: double distilled water

Comment [WU12]: explant transfer

alone or with combination of 1 mg/L, 2 mg/L, and 3 mg/L Kinetin (KIN). The control treatment was the PGRs-free MS medium. Sucrose (30 g/L) served as the carbon source in the medium. The medium was solidified with Gelrite (3 g/L) and its pH was adjusted to 5.8 by 1N NaOH or 1N HCl before autoclaving. The 250 ml jars filled with 50 ml of the medium, closed with plastic covers and autoclaved for 20 min at 121 °C and 15 lbs per inch². During the establishment and multiplication phase, the jars with explants were kept in a growth chamber at 23±2 °C with 16h day light provided by fluorescent lamps. The percentage of regenerated plants, shoot lengths, and mean shoot numbers each containing 5 explants were evaluated after four weeks in triplicates.

Comment [WU13]: 8 h darkness and 16...

Assessment of genetic stability of microcuttings using SSR markers

5 randomly selected six-week-old microshoots from each treatment of both cultivars were collected and 100 mg of the tissue were ground in liquid nitrogen and stored at -80 °C. Before the initiation of the cultures, material was also collected from the mother plants of both cultivars, additionally. 10 SSR primers were selected and tested (GEM1, GEM 2, GEM 17, GEM 52, GEM 70, GEM 98, GEM 106, GEM 140, GEM 179 and GEM 205) as depicted in Table 1. Further, Genomic DNA was extracted using modified CTAB method and the polymerase chain reaction was performed using 20 µl of the mixture consisting 1 µL of DNA, 0.3 µL Taq Polymerase, 0.8 µL of SSR primer, 0.5 µL of dNTPS, 14.4 µL of autoclaved water and 3 µL of buffer (x10 Taq buffer with 0.8 mM MgCl²). The initial denaturation occurred at 4 min at 94 °C, followed by 40 cycles of 45 sec denaturation at 94 °C, 45 sec annealing at the temperature range from 45.92 °C to 59.52 °C, and 90sec extensions at 72 °C, with a final extension at 72 °C for 5 min. Samples were stored at 4 °C till further analysis. SSR amplifications were performed for PCR products and amplification products for all samples were resolved on 2.5 % (w/v) agarose gels in 1x TBE buffer and stained with 0.5 µg L⁻¹ ethidium bromide. A Gel Documentation system was used for the final visualization and photographs of the gel. DNA ladder (Himedia, India) of 1 kb was employed to determine the size of unknown DNA fragments on the agarose gel.

Comment [WU14]: Taq DNA

Table 1. SSR primers used for assessment of genetic stability

Sr. No.	Primer Name	Forward Sequence	Reverse Sequence
1	GEM1	TTTCCTTTTCTTCCCAAATCAA	TTCTTCAACAGCCACCTCT
2	GEM2	GGTCAATTGCTCTGCTAGGG	GGAACACAATTACTGGTACAGTTGA
3	GEM17	GGTTTGATAAAAGGGTTT	TCAATGCATTTAGATAATAA
4	GEM52	AAGGCAGATGACCCTTCTCT	TTGCACCTTAAATCACACCA
5	GEM70	GGCGGAGTGCTTGATAATTC	GCAACTACCTAAAAGTCGAATGC
6	GEM98	CCTACAACCAAACCAAACCAT	GGTCCTCAGGAACGTTTTTC
7	GEM106	GTGCCAGCATTGAACTTCC	GCCCACATTGCAGTACCAGT
8	GEM140	GCCTAAATGTAGTGTGCCATT	ACAACGAGCATTGTTGAAGTTT
9	GEM179	GGAAGAAGAAGGCGACATTG	CCCAGTCGTTGGTTATGCTT
10	GEM205	AGCTGGACTAGATCATGTTG	TAGACCAAAATTCCATTCAT

Comment [WU15]: 5.....
.....3

Comment [WU16]: 3.....
.....5

Statistical analysis

All experiments under the current study were set up in a completely randomized design (Factorial). Data were subjected to one-way analysis of variance followed by the Turkey multiple range test ($\alpha \leq 0.05$) (Wojcik and Ludański 1989).

Results

In our current investigation, noteworthy and positive effects were observed when the MS medium was enriched with various concentrations of 6-benzyladenine (BA) in combination with Indole-3-butyric acid (IBA), as opposed to the control group lacking any growth hormones. Notably, we observed a gradual decline in tissue necrosis in all treatment groups (Table 2). The percentage of successfully regenerated explants increased across all treatments for both cultivars. Remarkably, the inclusion of BA at 4 mg, coupled with IBA at 0.5 mg, resulted in a remarkable 100% explant regeneration rate in both cultivars. This combination of hormones also yielded the highest regeneration ratio, signifying the rapid establishment of explants and the production of more than seven axillary shoots per explant in both cultivars. Additionally, the number of days required for explant establishment significantly decreased as the BA concentration increased, particularly up to 4 mg/L (Table 2).

Furthermore, all the treated explants exhibited a favorable response during the multiplication phase when cytokinin BA was applied either independently or in combination with Kinetin (KIN), in comparison to the control group (Table 3). In both cultivars, the most extended shoots bearing the highest number of shoots were observed when the MS medium was fortified with BA at 6 mg and KIN at 1 mg.

Table 2. Effect of cytokinin (BA) in combination of auxin (IBA) on the establishment and axillary shoot formation in gerbera cv. Kormoran and Dolores

MS medium with cytokinin [mgL^{-1}]	Kormoran			Dolores		
	Regenerated explants (%)	Number of shoots	Number of days taken for establishment	Regenerated explants (%)	Number of shoots	Number of days taken for establishment
Hormone-free MS	0.00 ^a	0.00 ¹	0.00 ¹	0.00 ¹	0.00 ¹	0.00 ¹
1BA+0.5 IBA	71.11 \pm 3.85 ^c	2.87 \pm 0.31 ^e	87.67 \pm 0.61 ^a	68.89 \pm 3.85 ^c	2.93 \pm 0.31 ^e	89.86 \pm 0.50 ^a
2BA+0.5 IBA	82.22 \pm 3.85 ^d	4.27 \pm 0.42 ^d	76.93 \pm 0.31 ^b	80.00 \pm 0.0 ^d	4.20 \pm 0.20 ^d	77.66 \pm 0.42 ^b
3BA+0.5 IBA	93.33 \pm 6.67 ^c	6.13 \pm 0.12 ^e	72.33 \pm 0.50 ^c	91.11 \pm 3.85 ^c	5.73 \pm 0.31 ^d	72.73 \pm 0.31 ^c
4BA+0.5 IBA	100.00 \pm 0.0 ^a	8.00 \pm 0.20 ^a	61.13 \pm 0.31 ^e	100 \pm 0.0 ^a	7.73 \pm 0.31 ^a	61.46 \pm 0.50 ^e
5BA+0.5 IBA	97.77 \pm 3.85 ^b	7.07 \pm 0.31 ^b	62.20 \pm 0.53 ^d	95.55 \pm 3.85 ^b	7.20 \pm 0.20 ^b	63.80 \pm 0.53 ^d

*Means \pm standard deviation within a column followed by the same letter are not significantly different according to Tukey's multiple range test at $\alpha = 0.05$

Table 3. Effect of cytokinins (BA and KIN) on *in vitro* shoot multiplication in gerbera cv. Kormoran and Dolores

MS medium with cytokinins [mgL ⁻¹]	Kormoran		Dolores	
	Shootlength(cm)	Numberofshoots	Shootlength(cm)	Numberofshoots
Hormone-freeMS	1.37±0.11 ^{k*}	1.00±0.00 ^j	1.44±0.13 ^k	1.00±0.00 ^g
2BA	1.68±0.15 ^j	1.80±0.20 ⁱ	1.64±0.14 ^j	1.60±0.20 ^f
2 BA+1 KIN	1.74±0.07 ^j	2.00±0.20 ^{hi}	1.89±0.07 ⁱ	2.27±0.23 ^e
2 BA+2 KIN	1.82±0.11 ^j	2.20±0.20 ^h	2.14±0.07 ^h	2.40±0.20 ^e
2 BA+3 KIN	2.23±0.06 ⁱ	2.67±0.31 ^g	2.18±0.09 ^h	2.93±0.12 ^d
4BA	2.41±0.08 ^h	3.27±0.12 ^f	3.19±0.08 ^g	3.67±0.12 ^c
4 BA+1 KIN	2.90±0.11 ^g	3.87±0.12 ^e	3.31±0.04 ^g	3.60±0.20 ^c
4 BA+2 KIN	3.25±0.06 ^f	4.13±0.23 ^{de}	3.62±0.07 ^f	4.13±0.12 ^b
4 BA+3 KIN	3.67±0.09 ^e	4.40±0.20 ^d	4.05±0.10 ^e	4.33±0.31 ^b
6BA	4.50±0.04 ^d	5.20±0.20 ^b	4.72±0.04 ^d	5.27±0.31 ^a
6 BA+1 KIN	6.19±0.03 ^a	5.53±0.31 ^a	6.23±0.06 ^a	5.43±0.29 ^a
6 BA+2 KIN	5.95±0.12 ^b	5.40±0.20 ^{ab}	6.02±0.11 ^b	5.47±0.31 ^a
6 BA+3 KIN	5.34±0.11 ^c	4.87±0.12 ^c	5.71±0.10 ^c	5.13±0.31 ^a

* Means ± standard deviation within a column followed by the same letter is not significantly different according to Tukey's multiple range test $\alpha = 0.05$

Assessment of genetic stability of micro cuttings using SSR markers

As mentioned earlier, 10 SSR markers were used for assessment of genetic fidelity of micropropagated cuttings of gerbera. Among them, 4 primers showed amplification whereas 6 primers did not amplify (Table 4). These amplified primers had monomorphic band pattern (Fig 2 & 3), which indicate true-to-type nature of *in vitro* raised plantlets of gerbera.

Comment [WU17]: What is the ladder type?

Table 4. Summary table of SSR analysis for genetic fidelity testing of tissue cultured plantlets

Description	SSR primers
Total number of primers tested	10
Number of amplified primers	4
Number of primers showing monomorphic band pattern	4
Size of amplified fragment (GEM2)	200 bp
GEM52	200 bp
GEM70	800 bp
GEM106	190 bp

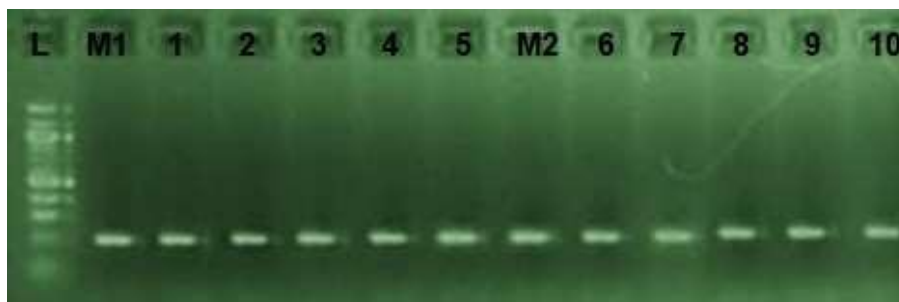


Fig.2: Amplification of genomic DNA of mother plant and tissue cultured plants at locus GEM2; L: Ladder; M1: Mother plant of cv. Kormoran; M2: Mother plant of cv. Dolores; 1-5: Tissue cultured plants of cv. Kormoran; 6-10: Tissue cultured plants of cv. Dolores.

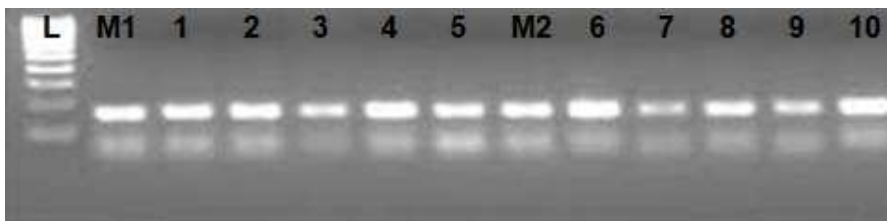


Fig.3: Amplification of genomic DNA of mother plant and tissue cultured plants at locus GEM 106; L: Ladder; M1: Mother plant of cv. Kormoran; M2: Mother plant of cv. Dolores; 1-5: Tissue cultured plants of cv. Kormoran; 6-10: Tissue cultured plants of cv. Dolores.

Discussion

In current investigation, we found that all concentrations of 6-benzyladenine (BA) in combination with Indole-3-butyric acid (IBA) at 0.5 mg/L resulted in increased explant regeneration. These combinations were particularly effective in enhancing the propagation ratio, i.e., the number of new shoots per explant, while also reducing the time required for their establishment. When we combined these two growth regulators, BA and Kinetin (KIN), during the multiplication phase, we observed a significant and substantial increase in the number of new shoots compared to the control group without cytokinins (Table 3).

According to existing literature, BA and KIN are the most frequently recommended cytokinins for the micropropagation of *Gerbera*. Higher doses of BA have been known to promote greater shoot proliferation (Hempel et al., 1985; Naz et al., 2012). Additionally, they stimulate shoot growth, that is why the treatment involving BA at 6 mg and KIN at 1 mg resulted in the longest shoots. This stimulation of shoot elongation by BA and KIN in *Gerbera*, as well as by zeatin in *Rhododendron indicum*, has also been reported previously (Rahimi et al., 2013). The quality of regenerated microcuttings is highly dependent on genetic stability, which ensures the repeatability of crucial features defining the original cultivar. In clonal propagation, it is essential that the multiplied material is both phenotypically and genetically identical to the mother plant. However, as numerous authors have reported, this is not always the case (Saeiahagh et al., 2019; Samarina et al., 2019; Novikova et al., 2020; Nowakowska and Pacholczak, 2020).

To assess the impact of cytokinins on genetic stability during *Gerbera* micropropagation, an evaluation study was conducted after the proliferation phase. Cytokinin not only plays a crucial role in cell division and proliferation but also involved in the plant's response to abiotic stressors i.e., drought, extreme heat, or cold. Thus, cytokinin serves as a key regulator of both plant development and stress responses (Li et al., 2021). This dual role of cytokinins may contribute to the development of variability between micropropagated plants and the mother plant.

This early assessment is significant as it enables the removal of regenerants that are genetically distinct from the stock plants during the early stages of propagation, saving time and resources by excluding material that does not exhibit the desired cultivar characteristics. In this context, SSR and ISSR markers offer valuable tools for evaluating genetic stability (Saha et al., 2016; Nowakowska and Pacholczak, 2020).

Conclusion

Based on the present study, it can be concluded that the presence of cytokinin (BA) in combination of low concentration of IBA (0.5 mg) in MS medium provided better and early establishment while in combination of KIN it also provides better proliferation than the control. Molecular studies revealed that SSR markers are the better option for the assessment of clonal fidelity of *in vitro* raised plants of gerbera. No polymorphism was detected among the mother plants and *in vitro* raised clones of each cultivar during SSR analysis. Out of ten SSR primers, four primers showed monomorphic banding patterns within *in vitro* raised clones comparable with the mother plant of each cultivar. Further, it can be concluded that there is no effect of cytokinins on genetic stability of *in vitro* raised plants of gerbera.

Abbreviations

BA	6-benzyladenine
IBA	Indole-3-butyric acid
SSR	Simple sequence repeats (marker)
PGR	Plant Growth Regulator
MS	Murashige and Skoog (1962) medium
CTAB	Cetyltrimethylammonium bromide

References

- Amin S, Wani TA, Kaloo ZA et al (2018) Genetic stability using RAPD and ISSR markers in efficiently *in vitro* regenerated plants of *Inularoyleana* DC. *Meta Gene* 18:100–106. <https://doi.org/10.1016/j.mgene.2018.08.006>
- Bhattacharyya P, Kumar V, Van Staden J (2017) Assessment of genetic stability amongst micropropagated *Ansellia africana*, a vulnerable medicinal orchid species of Africa using SCoT markers. *South African J Bot* 108:294–302. <https://doi.org/10.1016/j.sajb.2016.11.007>
- Chung, M. Y., Kim, M. B., Chung, Y. M., Nou, I. S. and Kim, C. K. (2016). *In vitro* shoot regeneration and genetic transformation of the gerbera (*Gerbera hybrid Hort.*) cultivar 'Gold Eye'. *Journal of Plant Biotechnology*, 43:255–260.
- George, E. F., Hall, M. A., and DeKlerk, G. J. (2008). *Plant Propagation by Tissue Culture. The Background Springer*, 1:520.
- Hempel, M.; Petos-Witkowska, B.; Tymoszuk, J. (1985). The Influence of Cytokinin on Multiplication and Subsequent Rooting of Gerbera *In Vitro*. *Acta Hort.*, 301–306. [doi:10.17660/actahortic.1985.167.32](https://doi.org/10.17660/actahortic.1985.167.32)
- Honig M, Plihalova L, Husičkova A et al (2018) Role of cytokinins in senescence, antioxidant defence and photosynthesis. *Int J Mol Sci* 19:4045. <https://doi.org/10.3390/ijms19124045>
- Hallmark HT, Rashotte AM (2019) Review—Cytokinin response factors: responding to more than cytokinin. *Plant Sci* 289:110251. <https://doi.org/10.1016/j.plantsci.2019.110251>
- Lakshmanan, V., Venkataramareddy, S.R. and Neelwarne, B. (2007). Molecular analysis of genetic stability in long term micropropagated shoot of banana using RAPD and ISSR markers. *Electronic Journal of Biotechnology*, 10 (1):1–8.
- Larkin PJ, Scowcroft WR (1981) Somaclonal variation — a novel source of variability from cell cultures for plant improvement. *Theor Appl Genet* 60:197–214. <https://doi.org/10.1007/BF02342540>

Comment [WU18]: Conclusion should be more about 14 lines

- Li SM, Zheng HX, Zhang XS, Sui N (2021) Cytokinin as central regulators during plant growth and stress response. *Plant Cell Rep* 40:271–282. <https://doi.org/10.1007/s00299-020-02612-1>
- Murashige T, Skoog F (1962) A revised medium for rapid growth and bio assays with tobacco tissue cultures. *Physiol Plant* 15:473–497. <https://doi.org/10.1111/j.1399-3054.1962.tb08052.x>
- Naz, S., Naz, F., Tariq, A., Aslam, F., Ali, A. and Athar, M. (2012). Effect of different explants on *in vitro* propagation of gerbera (*Gerbera jamesonii*). *African Journal of Biotechnology*, 11:9048-9053.
- Novikova TI, Asbaganov SV, Ambros EV, Zaytseva YG (2020) TDZ induced axillary shoot proliferation of *Rhododendron mucronulatum* Turcz and assessment of clonal fidelity using DNA-based markers and flow cytometry. *Vitr Cell Dev Biol - Plant* 56:307–317. <https://doi.org/10.1007/s11627-019-10049-9>
- Nowakowska K, Pacholczak A (2020) Comparison of the effect of meta-topolin and benzyladenine during *Daphnenezereum* L. micropropagation. *Agronomy* 10:1994. <https://doi.org/10.3390/agronomy10121994>
- Nowakowska K, Pacholczak A, Tepper W (2019) The effect of selected growth regulators and culture media on regeneration of *Daphnenezereum* L. *Alba* *Rend Lincei* 30:197–205. <https://doi.org/10.1007/s12210-019-00777-w>
- Pacholczak A, Nowakowska K (2019) Micropropagation of february daphne (*Daphnenezereum* L.). *Propag Ornament Plants* 19:106–112.
- Rodríguez JL, Pascual J, Viejo M et al (2012) Basic Procedures for Epigenetic Analysis in Plant Cell and Tissue Culture. In: Clifton NJ (ed) *Methods in Molecular Biology*. Humana Press, Totowa, NJ, pp 325–341
- Schiavo, F. L. (1995). *Biotechnology in Agriculture and Forestry*, Springer-Verlag, Germany, 30:20-28.
- Saha S, Adhikari S, Dey T, Ghosh P (2016) RAPD and ISSR based evaluation of genetic stability of micropropagated plantlets of *Morus alba* L. variety S-1. *MetaGene* 7:7–15. <https://doi.org/10.1016/j.mgene.2015.10.004>
- Saeiahagh H, Mousavi M, Wiedow C et al (2019) Effect of cytokinins and sucrose concentration on the efficiency of micropropagation of *Zes006* *Actinidia chinensis* var. *chinensis*, a red-fleshed kiwifruit cultivar. *Plant Cell, Tissue Organ Cult* 138:1–10. <https://doi.org/10.1007/s11240-019-01597-4>
- Samarina L, Gvasaliya M, Koininskaya N et al (2019) A comparison of genetic stability in tea [*Camellia sinensis* (L.) Kuntze] plantlets derived from callus with plantlets from long-term *in vitro* propagation. *Plant Cell, Tissue Organ Cult* 138:467–474. <https://doi.org/10.1007/s11240-019-01642-2>
- Santner A, Calderon-Villalobos LIA, Estelle M (2009) Plant hormones are versatile chemical regulators of plant growth. *Nat Chem Biol* 5:301–307. <https://doi.org/10.1038/nchembio.165>
- de Souza LM, Silva MM, de Herculano A et al (2019) Meta-topolin: an alternative for the prevention of oxidative stress in sugarcane micropropagation. *Hoehe* 46:0–4. <https://doi.org/10.1590/2236-8906-107/2018>
- Podwyszynska M, Gabryszewska E, Korbin M, Jasinski A (2010) Evaluation of somaclonal variation in micropropagated *Hemerocallis* spp. using phenotypic and ISSR markers. *Biotechnologia* 2:114–124
- Rademacher W (2015) Plant growth regulators: background and uses in plant production. *J Plant Growth Regul* 34:845–872. <https://doi.org/10.1007/s00344-015-9541-6>
- Rahimi S, Naderi R, Ghaemaghani S A et al (2013) Study on effects of different plant growth regulator types in shoot regeneration and node formation of *Sutsuki Azalea* (*Rhododendron indicum*): a commercially important Bonsai. *Procedia Eng* 59:240–246. <https://doi.org/10.1016/j.proeng.2013.05.117>
- Wojcik AR, Laudanski Z (1989) Planowanie i wnioski waniestatystyczne w doświadczeniach [Statistical planning and concluding in experimental works]. Państwowe Wydawnictwo Naukowe, Warszawa.