

Original Research Article

Field Evaluation of the Efficacy of Fungicides and Rhizosphere Bacterial Antagonists Against Rice Stem Rot Disease

ABSTRACT

Rice stem rot disease in paddy cultivation leads to reduction of yield. Management of this disease is difficult as it is soil borne. In the present study, field trials were conducted during *Rabi* 2016-17 and *early Kharif* 2017-18 to assess the effectiveness of twelve fungicides and four rhizosphere bacterial antagonistic isolates (RRB-1 to RRB-4) against rice stem rot disease. Disease incidence was recorded from the date of initial incidence of the disease *i.e.*, once in 15 days from maximum tillering to panicle emergence. Pooled analysis reveals that Hexaconazole recorded lowest per cent disease index (32.22) with highest grain yield and straw yield of 7.43 t/ha and 7.22 t/ha respectively, followed by Difenconazole with grain yield and straw yield of 7.29 t/ha and 6.88 t/ha respectively. On the other hand, bacterial antagonists using root dipping and foliar spray with RRB-4 showed less PDI of 32.92 with grain yield of 6.97 t/ha and straw yield of 6.61 t/ha.

Key words: Fungicides, Bacterial antagonists, stem rot, rice.

Introduction

Stem rot disease due to *Sclerotium oryzae* Catt. (*Magnaporthesalvini* (Catt.)) is one of the major soil borne diseases of rice crop and the disease damages the crop from forty five days after sowing to harvest of the crop. Earlier was considered as a minor disease but in recently it has been emerged as a major disease and it lead to reduction of rice yield by 5-80 % (Gopika *et al.*, 2016; Gowdaret *et al.*, 2018). The stem rot disease initially appears during the

tillering stage of the crop. *Sclerotium oryzae* produces irregular jetblack lesions on the leaf sheath just above the water line or basal portion of the stem. As the disease advances, jet black irregular lesions advances in the upward direction which leads to death of the infected sheath. The infection is deep seated, pathogen not only affect the leaf sheath and also penetrate the culm thereby reduces the panicle size and grain quality. When the pathogen attacks early in the season, either tillers are lodged or killed. Severe cases of infection lead to the formation of sterile panicles. During off season the pathogen survives by producing hard, black resting structures (i.e., sclerotia) in the soil and in plant debris. Management of *Sclerotium oryzae* is very difficult as it produces sclerotial bodies in soil. The disease is currently managed through fungicides due to the absence of desired host resistance and dependence on the chemical control is environmentally not safe and leads to residual effect. To overcome this problem in the present study an investigation has been conducted to evaluate the comparative efficacy of different chemical fungicides and antagonistic bacteria against rice stem rot disease.

MATERIALS AND METHODS

Isolation of bacterial antagonists

In the present study soil samples were collected from rice field rhizosphere and these samples were dried at room temperature. Bacterial antagonists were isolated from the collected soil by following serial dilution technique (Johnson and Curl, 1977) and were purified using streak plate method. Based on the dual culture technique four effective antagonistic *Pseudomonas* isolates (named as RRB-1 to RRB-4) against *S. oryzae* were chosen in field evaluation.

Evaluation of Selected Fungicides and Bacterial Antagonists Against *Sclerotium Oryzae* Under Field Conditions

Comment [DDK1]: Quote the previous reference for relevant studies

Comment [DDK2]: The sentence is not clear. Looks like contradiction to the first sentence

Comment [DDK3]: Which formula was used??? Any reference

Comment [DDK4]: How the Bacterial antagonists were identified ?? As *Pseudomonas* isolates. No where mentioned here

Field studies were conducted during *Rabi* 2016-17 and *Early Kharif* 2017-18 under natural disease condition to evaluate the efficacy of fungicides and antagonistic *Pseudomonas* isolates (Table 1). Field studies were carried out in a randomized block design (RBD) using MTU-1010 with a spacing of 15*15 cm. Suspension of *Pseudomonas* isolates were used for root dipping of seedlings before transplanting.

Comment [DDK5]: Before conducting field study, author is required to confirm the compatibility test between of fungicides and antagonistic *Pseudomonas* isolates??? Not mentioned here if done.

Comment [DDK6]: Details of replications, sampling and number of plants studied were missing

Comment [DDK7]: Method of application for chemical fungicides were not mentioned

Table:1 Treatments implemented in the field study during *Rabi* 2016-17 and *Early Kharif* 2017-18

S. No.	Treatments	Dosage
T ₁	Carbendazim	0.1%
T ₂	Propiconazole	0.1%
T ₃	Hexaconazole	0.2%
T ₄	Difenoconazole	0.2%
T ₅	Tebuconazole	0.15%
T ₆	Trifloxystrobin+ Tebuconazole	0.08%
T ₇	Azoxystrobin	0.1%
T ₈	Krysoxymethyl	0.1%
T ₉	Isoprothiolane	0.15%
T ₁₀	Mancozeb + Carbendazim	0.2%
T ₁₁	Thiophanate methyl	0.1%
T ₁₂	Benomyl	0.1%
T ₁₃	Root dipping and foliar spray with RRB-1	10 ⁵ to 10 ⁶ CFU/ml of suspension
T ₁₄	Root dipping and foliar spray with RRB-2	
T ₁₅	Root dipping and foliar spray with RRB-3	
T ₁₆	Root dipping and foliar spray with RRB-4	
T ₁₇	Control	

Comment [DDK8]: Basis for fixing the dosage of chemicals mentioned in table ??? Or any previous study followed for dosage?? If not, any lab study was done by author for fixing dosage invitro??

Observations

Disease incidence and severity of stem rot before each spray once in 15 days from maximum tillering to panicle emergence was recorded. Appropriate disease scores (Table 2) (0-9 scale of SES, IRRI, 2013) or percentages for disease incidence (PDI) was used. In this study

percentages for disease incidence, Percentage of disease severity (PDS), Grain yield and straw yield were recorded. The percentages for disease incidence and PDS were calculated using equ 1 and 2 respectively.

(a) Percentage of disease incidence =

$$\frac{\text{Number of infected tillers}}{\text{Total number of tillers per hill}} \times 100 \quad (1)$$

(b) Percentage of disease severity (PDS) =

$$\frac{\text{Number of individual ratings}}{\text{Number of plants assessed}} \times \frac{100}{\text{Maximum scale}} \quad (2)$$

Table 2: Description of stem rot disease scale (0-9 scale of SES for Rice)

Scale	Percentage of infected tillers
0	No disease observed
1	Less than 1%
3	1-5%
5	6-25%
7	26-50%
9	51-100%

RESULTS AND DISCUSSION

In this study an attempt is made to evaluate the chemicals and *Pseudomonas* isolates to reduce chemical usage in order to manage the rice stem rot. The investigation was conducted in two crop seasons i.e. *Rabi* 2016-17 and *Early Kharif* 2017-18 at ARS, Nellore, ANGRAU to evaluate different fungicides (12) and rhizosphere *Pseudomonas* isolates (4) against stem rot of rice. The data on stem rot disease (PDI) was recorded from the initial incidence of the disease at two times i.e. before first spray and second spray of treatments at fifteen days

Comment [DDK9]: Details can be mentioned in materials instead of results

interval. Among the tested treatments during *Rabi* 2016-17, T₁ showed the least PDI with 32.82 followed by T₁₁, T₃, T₇ and T₈. Highest PDI 48.01 was recorded in T₁₄. In untreated control, percent disease index was 54.67 at fifteen days after first spray. The percent disease index was recorded after second spray of all treatments at fifteen interval reveals that, treatment T₃ with least PDI with 36.79 followed by T₁, T₇, T₄, T₈ was observed. In untreated control, the Percent disease index of 64.29 was recorded was shown in F.g.1. In this present study, treatment T₁ showed lowest PDI at first spray of treatments but after second spray T₃ controlled the disease effectively. At initial stages of infection, T₁ showed good control over the disease, as the disease advances the efficacy was slightly reduced. The treatment T₃ (Hexaconazole) performed effectively in controlling the disease at maximum infection.

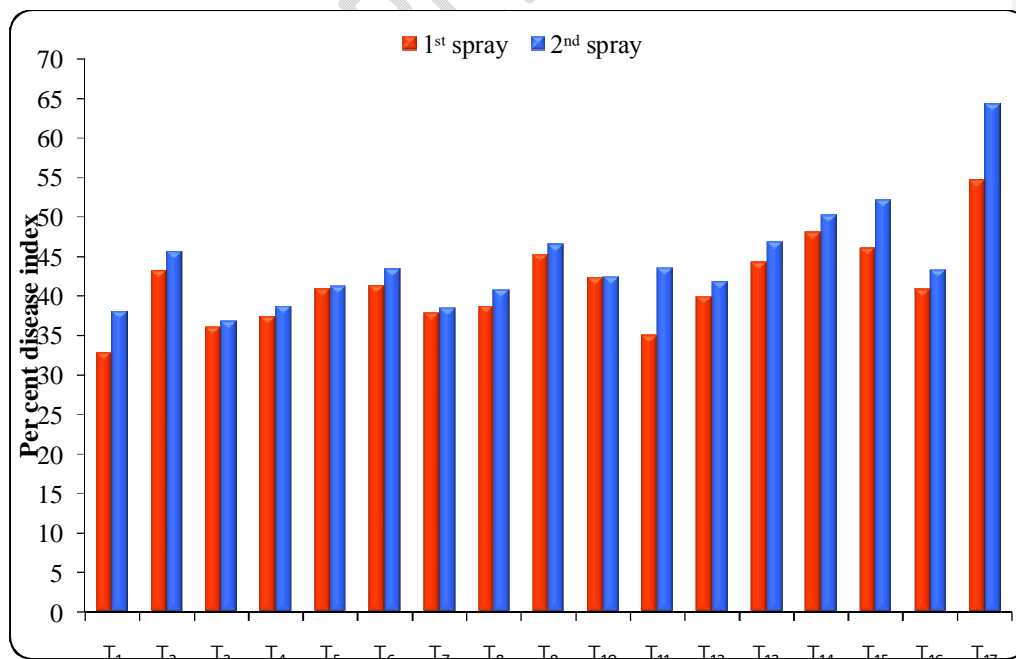


Fig.1. Efficacy of fungicides and bio control agents at 15 days interval on stem rot per cent disease index during *rabi* 2016-17

During *Early Kharif* 2017-18, the efficacy of fungicides and four rhizosphere *Pseudomonas* isolates (Table. 1, Fig.2.) was studied. Among all the treatments, T₁₆ showed least PDI of 25.00 followed by T₃, T₁₅ and T₄. Least PDI of 32.99 was observed in T₃. The PDI of stem rot in treatments T₂, T₅, T₁₁, T₄, T₁₀, T₆, T₁, T₁₆, T₉, T₈, T₁₂, T₁₄, T₇ and T₁₃ treatments ranged from 40.32 to 53.00 were on par among themselves at fifteen days after the second spray. The disease in untreated control (T₁₇) with 62.00 PDI. During initial stages of infection the treatment T₁₆ was effective but as the infection became worse, the efficacy of T₁₆ was not up to the mark in disease control whereas the treatment T₃ was found to be effective and stable in managing the disease.

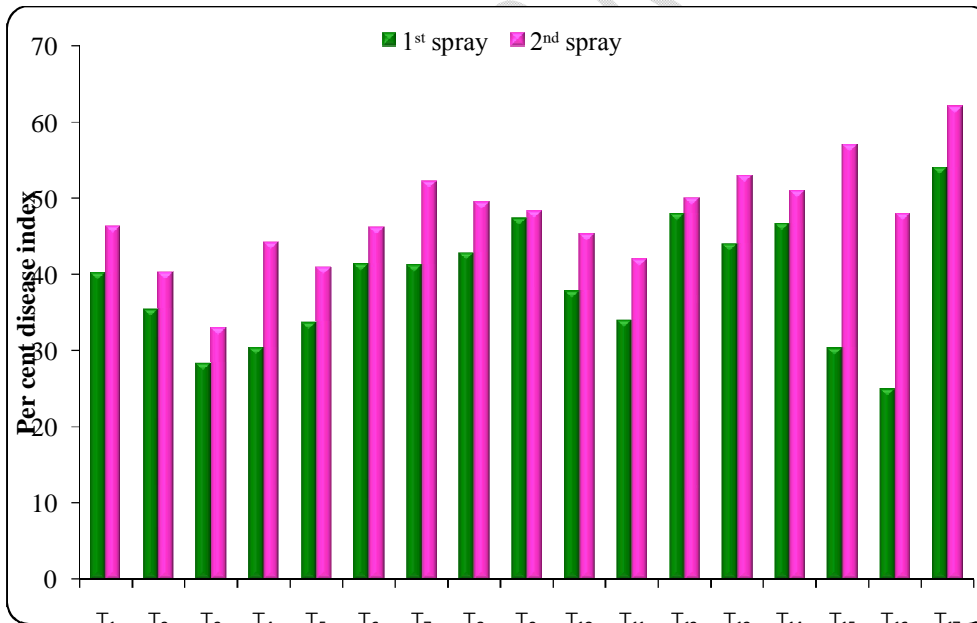


Fig. 2. Efficacy of fungicides and bio control agents at 15 days interval on stem rot per cent disease index during *early kharif* 2017-18

Results from the two crop seasons was subjected to Pooled analysis (Table 3) showed that least PDI of 32.22 was recorded in T₃ followed by T₁₆, T₄, T₁₁, T₁ and T₅ which were at par with each other. Treatment T₁₄ (Root dipping and foliar spray with RRB-2; 47.34 PDI) showed maximum PDI next to untreated control (T₁₇) followed by T₉ (Isoprothiolane; 46.32 PDI), T₁₃ (Root dipping and foliar spray with RRB-1; 44.13 PDI), T₁₂ (Benomyl; 43.93 PDI) and T₆ (Trifloxystrobin + Tebuconazole; 41.35 PDI) and all these treatments were at par with each other at 15 days after the first spray. Data recorded at second spray showed that least PDI in T₃ which was statistically significant with all other treatments. While among other treatments, (other than untreated control) maximum PDI was recorded in T₁₅ followed by T₁₄, T₁₃ and T₉ which were on par with each other.

Table 3. Field evaluation of the selected fungicides and antagonistic bacterial isolates on stem rot of rice-pooled data

S. No.	Treatments	Percent disease index (PDI)	
		15 days after 1 st spray	15 days after 2 nd spray
T ₁	Carbendazim	36.53 (37.16) ^{efghi}	43.51 (41.25) ^e
T ₂	Propiconazole	39.34 (38.83) ^{defg}	44.30 (41.72) ^{de}
T ₃	Hexaconazole	32.22 (34.55) ⁱ	34.89 (36.18) ^f
T ₄	Difenoconazole	33.90 (35.58) ^{ghi}	41.44 (40.06) ^e
T ₅	Tebuconazole	37.29 (37.62) ^{dfghi}	41.11 (39.87) ^e
T ₆	Trifloxystrobin+ Tebuconazole	41.35 (40.01) ^{bcde}	44.80 (42.01) ^{cde}
T ₇	Azoxystrobin	39.53 (38.95) ^{defg}	45.33 (42.31) ^{cde}
T ₈	Krysoxymethyl	40.75 (39.65) ^{cde}	45.12 (42.19) ^{cde}
T ₉	Isoprothiolane	46.32 (42.88) ^{bc}	47.39 (43.50) ^{bcde}
T ₁₀	Mancozeb + Carbendazim	40.41 (39.27) ^{def}	43.50 (41.25) ^e

T ₁₁	Thiophanate methyl	35.84 (35.96) ^{fghi}	42.77 (40.83) ^e
T ₁₂	Benomyl	43.93 (41.51) ^{bcd}	45.90 (42.64) ^{cde}
T ₁₃	Root dipping and foliar spray with RRB-1	44.13 (41.63) ^{bcd}	49.93 (44.96) ^{bcd}
T ₁₄	Root dipping and foliar spray with RRB-2	47.34 (43.47) ^b	50.62 (45.35) ^{bc}
T ₁₅	Root dipping and foliar spray with RRB-3	38.20 (38.17) ^{defgh}	53.57 (47.05) ^b
T ₁₆	Root dipping and foliar spray with RRB-4	32.92 (35.00) ^{hi}	45.65 (42.50) ^{cde}
T ₁₇	Control	54.33 (47.49) ^a	63.14 (52.62) ^a
	CD(0.05)	3.575	3.627
	CV	5.472	5.104

Grain and straw yield

The stem rot disease also effects the grain yield in paddy. Among the treatments, maximum grain yield was observed in Hexaconazole (T₃) followed by T₄, T₅, T₁₆, T₁ and T₁₀ (Table4). Lowest grain yield was observed in T₁₅. Straw yield also recorded in the treated plots. Among them, maximum straw yield was observed in T₃ followed by T₄ and T₂

Table4: Effect of fungicides and antagonistic rice rhizosphere bacterial isolates on Grain and straw yield of rice against stem rot

S. No.	Treatments	Yield (t/ha)	Straw yield (t/ha)
T ₁	Carbendazim	6.91 ^{abcde}	6.14 ^d
T ₂	Propiconazole	6.79 ^{bcde}	6.84 ^{abc}
T ₃	Hexaconazole	7.43 ^a	7.22 ^a
T ₄	Difenoconazole	7.29 ^{ab}	6.88 ^{ab}
T ₅	Tebuconazole	7.19 ^{abc}	6.35 ^{cd}
T ₆	Trifloxystrobin+Tebuconazole	6.42 ^{defg}	6.46 ^{bcd}
T ₇	Azoxystrobin	6.52 ^{defg}	6.42 ^{bcd}
T ₈	Krysoxymethyl	6.30 ^{efgh}	6.54 ^{bcd}
T ₉	Isoprothiolane	6.52 ^{defg}	6.12 ^d
T ₁₀	Mancozeb + Carbendazim	6.89 ^{abcde}	6.58 ^{bcd}

T ₁₁	Thiophanate methyl	6.45 ^{defg}	6.27 ^{cd}
T ₁₂	Benomyl	6.65 ^{def}	6.56 ^{bcd}
T ₁₃	Root dipping and foliar spray with RRB-1	6.06 ^{fgh}	6.31 ^{bcd}
T ₁₄	Root dipping and foliar spray with RRB-2	5.93 ^{gh}	6.22 ^d
T ₁₅	Root dipping and foliar spray with RRB-3	5.74 ^{hi}	6.11 ^d
T ₁₆	Root dipping and foliar spray with RRB-4	6.97 ^{abcd}	6.61 ^{bcd}
T ₁₇	Control	5.22 ⁱ	5.47 ^e
	CD(0.05)	0.61	0.592
	CV	5.599	5.548

The present findings were in confirmatory with Kumar *et al.* (2003) has been reported that propiconazole was very effective fungicide in reducing stem rot disease followed by isoprothiolone. Gopika and Jagadeeshwar (2017) also reported that spraying with propiconazole (100 ppm) prominently reduced the disease (1.2 disease index) over the other treatments. Prameshet *al.* (2017) tested new combination of chemical (Captan 70% + Hexaconazole 5%) with dosage of 750 g/ha which was showed promising effects in controlling stem rot disease. The present investigation revealed that, hexaconazole gave good control over the stem rot and also resulted the maximum yields. Bacterial bioagent (*Pseudomonas*) (T₁₆) also performed better in controlling the disease with good productivity of crop. With these results, farmers can use both chemicals and bioagents for the management of rice stem rot. Chemical usage or number of chemical sprays reduces thus least residual effect.

CONCLUSIONS

The present investigation revealed that the Hexaconazole recorded lowest PDI (34.89), highest grain yield and straw yield. Among the bioagent (*Pseudomonas*) isolates, T₁₆ resulted good grain and straw yield (6.97 and 6.61 t/ha) with PDI 45.65. Hence, this field study enabled that stem rot of rice can be managed either with bioagents or fungicides or alternate sprays of

fungicides with bioagents. Spray schedule with fungicides and bioagents may reduce the stem rot disease incidence effectively than depending on sole application.

Comment [DDK10]: Suggested to mention best outcomes of your experiment with clear conclusion

REFERENCES

- Gopika K, Jagadeeshwar R, Rao VK, Vijayalakshmi K. (2016) Salient research findings on rice stem rot disease (*Sclerotium oryzae* Catt.) and its management. *International Journal of Plant, Animal and Environmental Sciences*. 6(1): 80-82.
- Gopika K and Jagadeeshwar R (2017) Studies on disease incidence and efficacy of fungicides, herbicides and antagonists micro flora against stem rot of rice (*Sclerotium oryzae*) along with integrated management. *Agriculture Update*. 12(7): 2077-2087.
- Gowdar SB, DeepaH, BindhuKG, Hurali S (2018) Evaluation of Fungicides against Paddy Stem Rot. *International Journal of Current Microbiology and Applied Sciences*. 7: 4024-4027
- Johnson LF, Curl EA (1977) Methods for research on the ecology of soil borne plant pathogens. Burgess Publishing Company. Minneapolis. 27-35.
- KumarA, Singh R, Jalali BL (2003) Management of stem rot of rice with resistance inducing chemicals and fungicides. *Indian Phytopathology* 56(3): 266-269.
- PrameshD, SaddamhusenA, Muniraju KM, KumaraKM (2017) A combination fungicide for the management of sheath blight, sheath rot and stem rot diseases of paddy. *International Journal of Current Microbiology and Applied Sciences*. 6(9): 3500-3509.