

## Estimate of Grain Yield- Based Drought Tolerance Indices for some Rice Genotypes under Egyptian Conditions

### ABSTRACT

The development of rice genotypes with impressive tolerance to abiotic stress is one of the primary objectives of rice breeding programs. The current study was carried out to assess the capability of different indices to identify rice genotypes that are drought-tolerant under Egyptian conditions during the two growing seasons 2018 and 2019. Thirteen drought tolerance indices were calculated using the grain yield of twenty rice genotypes. According to the combined analysis of variance for grain yield, there are highly significant differences between genotypes (G), irrigation regimes (I), and their interactions. All drought tolerance indices, as well as grain yields under non-stress and stress conditions ( $Y_p$  and  $Y_s$ ), exhibited significant variations among genotypes. For  $Y_p$ ,  $Y_s$ , and all indices assessed, estimates of broad sense heritability ( $h^2$ ) and genetic advance as a percentage of mean (GAM%) were high. Using mean performances, drought tolerance indices, and multivariate analysis, the genotypes Giza 179, Sakha 104, IET 1444, and GZ 6296-12-1-2-1 are superior genotypes under both stress and non-stress conditions, as are the genotypes Sakha 107, IRAT 170, IR 68552-55-3-2, WAB 56-104, IRGA 318-11-6-2-6, and NERICA -4 under stress conditions. Hence, it is suggested that they be utilized as parents in

hybridization programs that aim to improve the drought tolerance of other rice genotypes in Egypt. Furthermore, mean productivity index (MP), geometric mean productivity (GMP), stress tolerance index (STI), harmonic mean (HM), and yield index (YI) are the tolerance indices that can be classified as better predictors of drought tolerance considering the yield potentials of the genotypes.

**Keywords:** Genetic parameters, multivariate analysis, drought tolerance indices, rice.

## **INTRODUCTION**

Rice is one of the world's most important staple cereal crops, feeding more than 3.5 billion people [1]. It occupies over one-fifth of the whole land area used to cultivate cereals, according to [2].

Drought is one of the most severe abiotic stresses endangering the global food supply. Furthermore, because freshwater supplies are limited worldwide, population expansion is predicted to raise global food consumption, potentially increasing the water required to farm crops [3]. Rice, as the most diverse monocot, is grown in a broad range of eco-geographical conditions and is subjected to a diverse range of abiotic stresses, such as drought, salinity, cold, and heavy metals, with drought being one of the most destructive stresses at any stage of rice crop production. It is disturbing in many regions around the world, and researchers, farmers, and governmental organizations must pay attention [4].

Developing rice cultivars with acceptable yields, drought tolerance, and water efficiency has become extremely important for

Egypt's food security and water scarcity reduction. Water shortage is a significant obstacle to the widespread use of high-yielding rice varieties in drought-prone rice areas, because farmers cannot afford to be exposed to even short periods of water scarcity [5]. The relative yield of a genotype in comparison to other genotypes under the same water shortage stress is known as water deficit tolerance [6]. Water deficit tolerance is a complex phenomenon that reflects drought tolerance (tissue tolerance, photosystem maintenance, etc.) and drought avoidance (deep root, leaf rolling) characteristics that are controlled by different genes [1]. Drought tolerance selection is difficult because of the many interactions between genotypes and the environment, as well as a lack of knowledge about the function and role of tolerance mechanisms [7]. Breeding for drought tolerance is therefore often performed by selecting genotypes with high yield under water deficit conditions [8].

Drought stress tolerance is a complex characteristic limited by low heritability and the absence of effective selection strategies [9]. Recombination breeding can contribute significantly to the accumulation of minor genes for grain yield and other drought-related traits, keeping this in mind. Understanding the genetic diversity of germplasm is crucial before starting a breeding program [10].

The amount of genetic variability in germplasm can be determined using genetic parameters such as genotypic coefficient of variation (GCV) and phenotypic coefficient of variation (PCV). In addition, knowledge of heritability is essential for selection since it exposes the degree of a trait's transmission to future generations and the quality of phenotype data in multi-location trials [11]. Heritability associated with high

genetic advance might be more successful at predicting the significant impact in the selection of the best genotypes for yield and its attributing traits. This helps in assessing how the environment affects the manifestation and reliability of traits [12]. Another key selection criterion that breeders use in their breeding programs is genetic advance [13].

To identify genotypes that are drought tolerant, a number of drought indices have been proposed, these indices are determined by the mathematical association with yield under water deficit and non-stressed conditions. These indices are determined using the drought tolerance or susceptibility of the genotypes reported by [14]. [15] proposed the stress susceptibility index (SSI), which detected changes in both prospective and actual yields in variable conditions, as a method of determining yield stability. A tolerance index (TOL) based on yield differences measured under non-stress ( $Y_p$ ) and stress ( $Y_s$ ) conditions was presented by [16]. The average of  $Y_p$  and  $Y_s$  was used to define the mean productivity index (MP). When the difference between  $Y_p$  and  $Y_s$  is large, MP has an upward bias. In both stress and non-stress conditions, the geometric mean productivity (GMP), which is less sensitive to high values, is a better indicator than MP for identifying superior genotypes [16]. A stress tolerance index (STI) was presented by [17] which can be utilized to select genotypes that produce good yields at both under stress and non-stress conditions. [18] proposed the yield index (YI), [19] proposed the yield stability index (YSI), [20] proposed the drought tolerance index (DI), [21] presented the yield reduction ratio (YR), [22] proposed the harmonic mean (HM), and [23] presented the golden mean (GOL) to determine whether the genotypes are

stable under stress and non-stress conditions. [24] introduced abiotic tolerance index (ATI) and stress susceptibility percentage index (SSPI) for screening drought tolerant genotypes in stress and non-stress conditions.

According to [17] and [25], the best indices are those that have a high correlation with grain yield in both conditions and the capacity to identify potential high-yielding and drought-tolerant genotypes. Plant breeders have used a number of statistical methods, including correlation coefficient, Biplot, and principal component analysis (PCA), to evaluate the efficacy of several drought tolerance indices for genotype screening and identification. Therefore, the goal of this study was to evaluate the genetic parameters and efficiency of several drought tolerance indices, as well as to identify drought-tolerant rice genotypes under Egyptian conditions.

## **MATERIALS AND METHODS**

### **Genetic Materials and Field Procedures**

The experiments were conducted in the Rice Research Department's experimental farm at the Sakha Agriculture Research Station, Kafer El-Sheikh governorate, Egypt, during the two growing seasons of 2018 and 2019. Twenty rice genotypes were used in this investigation; Table 1 presents the names, places of origin, and types of these parental genotypes. The experimental field was located at 30° 57' 12" north latitude and 31° 07' 19" east longitude. The soil had a pH range of 7.6 to 8.6, and its mechanical components were silt (27.1%), clay (65.2%), and sand (7.4%). Throughout the growing seasons, mean maximum

and minimum temperatures of 33.54 ° C and 24.65 ° C were observed, with a relative humidity of 63.45 %.

Table 1: List of name, origin and types of the twenty rice genotypes used for assessment of drought tolerance in the current study

No.	Name	Origin	Type
1	Giza 177	Egypt	Japonica
2	Giza 178	Egypt	Indica /Japonica
3	Giza 179	Egypt	Indica /Japonica
4	Sakha 101	Egypt	Japonica
5	Sakha 102	Egypt	Japonica
6	Sakha 104	Egypt	Japonica
7	Sakha 107	Egypt	Japonica
8	Sakha 108	Egypt	Japonica
9	GZ 9730-1-1-1-1	Egypt	Japonica
10	GZ 6296-12-1-2-1	Egypt	Indica /Japonica
11	GZ1368-S-5-4	Egypt	Indica
12	IR 11 L 465	IRRI	Indica
13	WAB 56-104	Africa Rice Center	Indica
14	IRAT170	Côte d'Ivoire	Japonica
15	NERICA -4	Africa Rice Center	<i>O. Sativa/O. Galliberema</i>
16	IR 65600-127-6-2	IRRI	Tropical-japonica
17	IR 68011-15-1-1	IRRI	Tropical-japonica
18	IR 68552-55-3-2	IRRI	Tropical-japonica
19	IRGA 318-11-6-2-6	Brazil	Indica
20	IET1444	India	Indica

The genotypes were planted in two adjacent experiments during the 2018 and 2019 growing seasons. The first experiment was irrigated normally (4-day irrigation intervals), and the second experiment was irrigated under drought stress (10-day irrigation intervals) without any water standing and only when needed based on the permanent wilting point (Table 2). The stress condition became noticeable two weeks after the transplant until it reached maturity.

Table 2. Some soil parameters measured before to each irrigation

Soil depth(cm)	F. C. %	W. P. %	Bulk density g/cm <sup>3</sup>
0-15 cm	46.25	24.00	1.15
15-30 cm	42.00	22.25	1.20
30-45 cm	38.50	20.50	1.25
Mean	42.25	22.25	1.20

F.C.% = field capacity and W.P.% = permanent wilting

Moisture content was determined for soil samples collected at intervals of 15 cm to 45 cm in gravity depth. Before each irrigation, and 48 hours later, soil samples were collected. The field capacity was measured in the field. The permanent wilting point and bulk density were measured to a depth of 45 cm using [26] method.

To monitor the soil moisture level during the reproductive stage, periodic soil sample at 15 and 30 cm soil depth after suspension water was used (stress period). The water table was also measured throughout the stress period. In the two experiments, the date of sowing was May 1<sup>st</sup>, and transplanted one seedling/hill at June 1<sup>st</sup>. A randomized complete block design (RCBD) with three replicates was used to design each experiment. Each replicate comprised three rows, and each row was five meters long, with a 20 cm x 20 cm space between rows and hills. As usual, all of the recommended cultural practices for growing rice in the area were followed. At the harvesting stage, grain yield data were obtained from 10 plants grown from every genotype in each replication, according to SES, for [27].

#### **Estimation of Drought Tolerance Indices:**

Each plot's panicles were all harvested when they reached physiological maturity, dried to a moisture content of approximately 14%,

and measured. The grain yield per plant (g) was then estimated using the 10 weighted individual plant yields from each replication. The drought tolerance indices based on grain yield /plant (g) for non-stress ( $Y_p$ ) and water stress ( $Y_s$ ) conditions for each genotype were determined using the formulas listed in Table 3 to differentiate genotypes based on drought response in terms of grain yield /plant (g).

### Statistical Analysis

For grain yield, the combined three-way ANOVA was performed considering the effect of years, irrigations regimes and genotypes, and using the PBSTAT SOFTWARE. For grain yield ( $Y_p$  and  $Y_s$ ) and drought tolerance indices, the combined two-way ANOVA was performed considering the effects of years and genotypes, and computed according to the method of [28]. Heritability in broad sense (BSH) was estimated from method given by [29]. The extent of genetic advance to be expected by selecting ten percent of the superior progeny was calculated according to [30].

Table 3: Drought tolerance indices used for the evaluation of rice genotypes to water deficit conditions

No.	Drought tolerance indices	Equation	Reference
1	Stress susceptibility index (SSI)	$[1-(Y_s/Y_p)]/[1-(Y_s^-/Y_p^-)]$	Fischer and Maurer (1978)
2	Stress tolerance index (TOL)	$Y_p - Y_s$	Rosielle and Hamblin (1981)
3	Mean productivity index (MP)	$(Y_p + Y_s)/2$	Rosielle and Hamblin (1981)
4	Geometric mean productivity (GMP)	$(Y_p \times Y_s)^{1/2}$	Fernandez (1993)
5	Stress tolerance index (STI)	$(Y_p \times Y_s)/(Y_p^-)^2$	Fernandez (1993)

6	Yield index (YI)	$Y_s/Y_s^-$	Gavuzzi et al. (1997)
7	Yield stability index (YSI)	$Y_s/Y_p$	Bousslama and Schapaugh (1984)
8	Drought resistance Index (DI)	$[Y_s \times (Y_s/Y_p)]/Y_s^-$	Lan (1998)
9	Yield reduction ratio (YR)	$1-(Y_s/Y_p)$	Golestani-Araghi and Assad (1998)
10	Abiotic tolerance index (ATI)	$[(Y_p - Y_s)/(Y_p^- - Y_s^-)] \times [V_{Y_p} \times Y_s]$	Moosavi et al., (2007)
11	Stress susceptibility percentage index (SSPI)	$[(Y_p - Y_s)/2(Y_p^-)] \times 100$	Moosavi et al., (2007)
12	Harmonic mean (HM)	$[2(Y_p \times Y_s)]/(Y_p + Y_s)$	Hossain et al., (1990)
13	Golden mean (GOL)	$(Y_p + Y_s)/(Y_p - Y_s)$	Moradi et al., (2012)

Genotypic (GCV%), phenotypic (PCV%) and error (ECV%) coefficients of variation were calculated according to [31]. Standard error (SE) of BSH was calculated according to [32]. Ranksum (RS) = Rank mean ( $\bar{r}$ ) + Standard deviation of rank (SDR) and SDR calculated according to [33]. Correlation coefficient, principal component analysis and cluster analysis were performed for better understanding of the relationships among all possible pair-wise comparisons of  $Y_p$ ,  $Y_s$  and different drought tolerance indices. Correlation coefficient, principal component analysis and cluster analysis were done using a computer software program PAST version 2.17c.

## RESULTS AND DISCUSSION

### Analysis of variance

Table 4 displays the findings of the combined analysis of variance for grain yield/plant (g). For grain yield, the mean square resulting from genotypes, irrigation regimes, and their interaction (G x I) were

highly significant (g). The other sources of variance, however, were not significant. Sums of squares (TSS) were largely influenced by irrigation regimes (57.64%), genotypes (37.89%), and G x I interaction (2.67%), in that order. These findings allowed us to screen for drought tolerant genotypes by showing that there were significant variations in genotype responses to non-stress and water stress conditions across seasons for grain yield in rice. Also, highly significant difference between grain yield under non-stress and water deficit conditions indicates existence of genetic variation and possibility of selection for favorable genotypes in both conditions to improve drought tolerance of rice under Egyptian conditions. The combined analysis of variance indicated significant effects of environment, genotype and genotype × environment (GE) interactions on grain yield [34] and [35].

Table 4: Combined analysis of variance for grain yield of twenty rice genotypes

SOV	df	SS	MS	Percentage relative to total sum of squares (TSS%)
Years (Y)	1	0.15	0.15ns	0.0010
Irrigation regimes (I)	1	8620.65	8620.65**	57.6473
Y*I	1	1.66	1.66ns	0.0111
Re./Y/I = (Ea)	6	7.81	1.30	0.0523
Genotypes (G)	19	5666.83	298.25**	37.8947
G*Y	19	56.58	2.98ns	0.3783
G*I	19	399.34	21.02*	2.6704
G*Y*I	19	39.92	2.10*	0.2670
Pooled Error = (Eb)	154	161.19	1.05	1.0779
CV	3.03			

\* and \*\*: significant at 5% and 1% levels of probability, respectively.

According to combined ANOVA analysis of non-stress (Yp) and stress (Ys) conditions as well as drought tolerance indices (Table 5), grain

yield ( $Y_p$  and  $Y_s$ ) and all drought tolerance indices exhibited highly significant between genotypes (G). [36] had previously found similar findings. The findings demonstrated that almost all indices showed a significant genetic variation and could distinguish between genotypes under stress and non-stress conditions. Also, these findings showed that genotypes varied for the genes influencing yield and drought tolerance indices [37]. However, the efficient indices should also be able to select genotypes that combine high yield with drought tolerance [25].

The highest values of genotype variance were recorded for HM index followed by GMP, MP and SSPI indices. There were no significant differences between the years and G x Y interaction for grain yield ( $Y_p$  and  $Y_s$ ) and tolerance indices except for G x Y interaction for STI. Therefore, those drought tolerance indices were not influenced mainly by year effect. [36] reported that a highly significant variation was observed in grain yield and tolerance indices among the studied rice genotypes, while, there were no significant differences between the two study years in terms of seed yield and tolerance indices. [38] mentioned that significant differences were observed between years and genotypes for most studied drought indices. They added that the interaction genotype x year was significant only for SSI and ATI. Thus, those indices ranked differently the genotypes depending on the variation of stress intensity between years.

As presented in Table 5, the values of the CVs varied between 2.12% (STI) and 10.63% (ATI). Based on maximum and minimum values, it was possible to observe the great magnitude between and within the grain yield at non-stresses and stress conditions ( $Y_p$  and  $Y_s$ ) and drought tolerance indices, which indicates influence of different factors in its measurements [39]. These findings revealed that the environment had a

minor influence on all indices, with the exception of the index ATI, which was moderately influenced. The magnitude of CV% indicated that the genotypes had exploitable genetic variability for the studied drought tolerance indices. The other studies showed higher CV% for grain yield in rice by [40].

Table 5: Analysis of variance of grain yield under normal (Yp), drought (Ys) conditions and different drought tolerance indices in rice genotypes over the two growing seasons

S. O. V Indices	Year (Y)	Reps within Year	Genotypes (G)	G x Y interaction	Polled error	CV%
D. F.	1	4	16	16	64	
Yp	3.251	0.530	156.653**	1.158 <sup>ns</sup>	1.034	2.54
Ys	3.038	0.523	163.659**	0.821 <sup>ns</sup>	1.282	4.09
SSI	0.079	0.003	0.312**	0.001 <sup>ns</sup>	0.001	3.36
TOL	2.511	1.192	37.103**	0.002 <sup>ns</sup>	0.212	3.52
MP	0.306	1.740	151.082**	0.006 <sup>ns</sup>	0.255	2.49
GMP	4.392	0.819	159.009**	0.027 <sup>ns</sup>	0.289	2.57
STI	0.004	0.003	0.298**	0.001*	0.001	2.12
YI	0.004	0.017	0.212**	0.001 <sup>ns</sup>	0.001	2.74
YSI	0.021	0.001	0.028**	0.004 <sup>ns</sup>	0.001	3.66
DI	0.002	0.002	0.204**	0.001 <sup>ns</sup>	0.002	5.83
YR	0.001	0.004	0.029**	0.001 <sup>ns</sup>	0.001	5.56
ATI	0.001	0.001	0.004**	0.004 <sup>ns</sup>	0.001	10.63
SSPI	1.240	0.497	58.585**	0.009 <sup>ns</sup>	0.564	4.59
HM	6.984	14.820	168.182**	0.167 <sup>ns</sup>	0.503	2.17
GOL	2.094	0.474	11.572**	0.020 <sup>ns</sup>	0.167	6.91

\* and \*\*: significant at 5% and 1% levels of probability, respectively. Yp: yield under water non-stress; Ys: yield under water stress; SSI: susceptibility stress index; TOL: tolerance index; MP: mean productivity; GMP: geometric mean productivity; STI: stress tolerance index; YI: yield index; YSI: yield stability index; DI: drought resistance index; YR: yield reduction ratio; ATI: abiotic tolerance index; SSPI: stress susceptibility percentage index; HM: harmonic mean; GOL: golden mean.

## Genetic Parameters

Table 6 displays the values of genetic parameters and drought tolerance indices for grain yield under non-stressed and stressed conditions ( $Y_p$  and  $Y_s$ ). The grain yield ( $Y_p$  and  $Y_s$ ) and all drought tolerance indices measures demonstrated highly significant broad sense heritability ( $h^2$ ) across the two growing seasons. It has been stated that the heritability values would not be practically significant for selection based on phenotypic appearance in the absence of a genetic advance. So, genetic advance should be considered along with heritability in coherent selection breeding program. For grain yield under non-stress and stress conditions ( $Y_p$  and  $Y_s$ ) and drought tolerance indices, high values of  $h^2$  ( $\geq 0.99$ ) were observed, along with high genetic advance as a percent of the mean (GAM%). The highest  $h^2$  values suggested that a greater proportion of the total variance was due to a greater genotypic variance that was influenced less by environmental factors and a lower contribution of experimental error in the overall phenotypic variability, indicating high heritability. Under water stress conditions, genetic variance is mainly due to additive gene action or a few major genes. Therefore, the role of additive variance was higher than that of dominant variance for these drought tolerance indices [33]. The GAM% values for the STI index were the highest, followed by the DI, GOL, SSI, and YR indices. Therefore, in this study, it seems that selection for drought tolerance based on most studied indices will be fruitful under water stress conditions. [41] mentioned that  $h^2$  estimates were low for SSI and TOL, while, moderate for MP, GMP, HM, STI and YI. On the other hand, the highest values of  $h^2$  and GAM% were recorded for  $Y_p$ ,  $Y_s$ , TOL, MP, HM, SSI, GMP, STI, YI and YSI by [42]. Based on the

heritability and genetic advance estimates, selection for drought tolerance based on GMP, MP, and STI [37], GMP, STI, HM, and YI, [41] as well as STI [33] will be more fruitful than based on the other studied indices.

The values of coefficients of phenotypic variation (PCV%) were higher than their corresponding coefficients of genotypic variation (GCV%) for grain yield under non-stress and stress water conditions ( $Y_p$  and  $Y_s$ ) and drought tolerance indices. Still, the differences between the values were generally low, indicating that the phenotype was close to the genotype, and environmental influence was less for  $Y_p$ ,  $Y_s$ , and drought tolerance indices. The highest values of the GCV% and PCV% were recorded for STI index followed by DI, GOL, SSI, and YR indices; while, there were moderate values for YI as well as SSPI, TOL,  $Y_s$ , ATI, HM, and GMP indices, indicating that all these indices are amenable for further improvement. In contrast to that, the lowest values for the GCV% and PCV% were observed for  $M_p$  as well as  $Y_p$  and YSI indices. These findings were supported by [36], who also reported high GCV% for GOL, DI, TOL, SSPI, ATI, YR, and SSI. The values of error coefficients of variation (ECV%) varied from 0.74% to 10.63% (Table 6).

Table 6: Genetic parameters of  $Y_p$ ,  $Y_s$  and different drought tolerance indices in rice

Indices	Genetic Parameters						
	$h^2$	GA	GAM%	GCV%	PCV%	ECV%	RCV

Yp	0.99±0.35	8.93	22.32	12.73	12.78	2.54	5.01
Ys	0.99±0.35	9.15	33.04	18.82	18.87	4.09	4.60
SSI	1.00±0.35	0.45	36.27	20.63	20.75	3.36	6.14
TOL	1.00±0.35	4.38	33.47	19.02	19.09	3.52	5.40
MP	1.00±0.35	8.83	26.06	14.81	14.88	1.49	9.94
GMP	1.00±0.35	9.06	26.51	15.06	15.12	1.57	9.57
STI	0.99±0.35	0.39	53.74	30.54	30.65	1.12	27.29
YI	0.99±0.35	0.33	33.62	19.10	19.32	0.74	25.90
YSI	0.99±0.35	0.12	16.06	9.13	9.23	3.66	2.50
DI	1.00±0.35	0.32	44.08	25.05	25.15	5.83	4.30
YR	0.99±0.35	0.12	35.66	20.33	20.49	5.56	3.66
ATI	1.00±0.35	0.01	29.28	16.63	16.83	10.63	1.56
SSPI	1.00±0.35	5.50	33.61	19.09	19.29	4.59	4.16
HM	0.99±0.35	9.31	28.44	16.17	16.28	2.17	7.46
GOL	1.00±0.35	2.44	41.30	23.49	23.57	6.91	3.40

$h^2$ : broad sense heritability; GA: genetic advance; GAM%: genetic advance as percent of mean; GCV%: genotypic coefficients of variation; PCV%: phenotypic coefficients of variation; ECV%: error coefficients of variation; RCV: relative coefficient of variation.

The ATI index had the highest ECV%, followed by GOL, DI, YR and SSPI indices, while YI index showed the lowest value. In accordance with previously published results, the relative coefficient of variation ( $RCV = GCV\% / ECV\%$ ) was greater than unity for grain yield under non-stress and water stress conditions (Yp and Ys) and drought tolerance indices. The highest RCV values ( $RCV > 1$ ) indicate that the environmental variation between genotypes was less than the genetic variation for grain yield under non-stress and water stress conditions (Yp and Ys) and drought tolerance indices. These results suggest that genotypic values may differ from one environment to another, which may have an effect on how genotypes behave in different environments[43].

### **Drought tolerance indices**

To determine the drought tolerance of the twenty studied rice genotypes, SSI, TOL, MP, GMP, STI, YI, YSI, DI, YR, ATI, SSPI, HM, and GOL were computed using grain yield under non-stress ( $Y_p$ ) and water stress ( $Y_s$ ) conditions (Table 7). Over two growing seasons, the grain yield (g) of twenty rice genotypes under non-stress conditions increased by approximately 37% compared to yields under water stress conditions. Drought stress in this study might be regarded moderate stress; thus, this result provides a good indicator of genotypic variations under random drought stress [40]. The best indices are those that have a high correlation with grain yield under both stress and non-stress conditions, according to [17], and the best measure for selection under drought conditions could separate genotypes that have desirable and similar yield under stress and non-stress conditions from other groups. Selection based on a combination of indices may provide a more useful criterion for improving drought resistance of rice. Among rice genotypes, genotypes exhibiting low tolerance indices (YR, SSI, TOL, ATI, and SSPI) and genotypes with high tolerance indices ( $Y_p$ ,  $Y_s$ , MP, GMP, STI, YI, YSI, DI, HM, and GOL) tend to be more tolerant. The genotypes Giza 179, Sakha 104, IET 1444, GZ 6296-12-1-2-1, Giza 178, and GZ 1368-S-5-4 had the highest grain yield under  $Y_s$  and relatively high grain yield under  $Y_p$ . Giza 179, Sakha 104, IET 1444, and GZ 6296-12-1-2-1 are the four genotypes that produced the highest grain yield under  $Y_p$  and  $Y_s$ . The genotypes are Giza 179, Sakha 104, and IET 1444, which had the highest MP, STI, GMP, YI, YSI, DI, HM, and GOL indices and the lowest recorded values for YR, SSI, TOL, ATI, and SSPI indices. Consequently, these genotypes were considered the most drought-tolerant and desirable under  $Y_s$ . In the same text, it implies that the drought tolerance indices were successful in selecting genotypes with good yield under both  $Y_p$  and  $Y_s$  conditions. The genotypes Giza 177, Sakha 102, and IR11L465, on the

other hand, had the highest recorded values for the YR, SSI, TOL, ATI, and SSPI indices and the lowest recorded values for the MP, STI, GMP, YI, YSI, DI, HM, and GOL indices. Consequently, these genotypes were identified as the most drought-sensitive and undesirable under Ys conditions, as well as drought-sensitive genotypes.

The genotype Giza 178 showed comparatively high values of the MP, YI, YSI, HM, and GOL indices, as well as grain yield under Yp and Ys, and relatively low values of the YR, SSI, and ATI. As a result, the genotype Giza 178 is regarded as having a moderately high tolerance for drought. The genotypes Sakha 108, GZ 6296-12-1-2-1, and GZ 1368-S-5-4 showed comparatively high values of these indices and grain yield under Yp and Ys, as well as relatively low values of YR and ATI, according to the same text's MP, STI, GMP, YI, YSI, and HM indices. These genotypes are therefore regarded as having a moderately good drought tolerance. Hence, the selection process should be based on high rates of YI when under stress.

According to YR, SSI, TOL, ATI, and SSPI indices, the genotypes are namely: Sakha 107, IRAT 170, IR 68552-55-3-2, WAB 56-104, IRGA 318-11-6-2-6, and NERICA-4 had relatively the lowest values among the studied genotypes, but unfortunately they couldn't have succeeded in having high MP, STI, GMP, and YI indices, so they are considered to be desirable only under Ys conditions. Meanwhile, the genotypes, namely: Sakha 101 and IR 65600-127-6-2, are considered to be desirable under only Yp conditions. Except for the previous genotypes (sensitive and tolerant), the other genotypes were identified as semi-tolerant or semi-sensitive to drought stress by all the drought tolerance indices in this study.

These findings demonstrated that the MP, GMP, and HM indices as well as the STI, YI, YSI, and DI were similarly in their selection of

genotypes. In the same text, the results illustrated that the YR, SSI, and ATI were similar in their selection of genotypes. The MP, STI, GMP, and HM indices were useful selection criteria for high-yielding rice genotypes under both non-stress and stress conditions, while the relative decrease in yield indicated that the SSI, TOL, YR, ATI, SSPI, YSI, DI, and GOL values were better to determine drought tolerance levels. These findings are consistent with those found by [44] for the drought indices STI, MP, GMP, and YI, as well as [45] for the drought indices STI and YI, which were superior, indicating that they can be used to select drought-tolerant genotypes as alternatives. Drought indices SSI, TOL, and YSI [44], as well as TOL and SSI [46], can be used to screen for drought tolerance.

Table 7: Comparison of different drought tolerance indices for rice genotypes based on grain yield under non-stress (Yp) and water stress (Ys) conditions (averaged over two growing seasons).

Genotype	Drought tolerance indices														
	Yp	Ys	MP	STI	GMP	YI	YSI	YR	SSI	TOL	DI	ATI	SSPI	HM	GOL
G.177	35.00	14.70	26.85	0.413	25.58	0.673	0.534	0.466	1.55	16.30	0.359	0.041	20.48	24.38	3.29
G.178	41.68	27.67	37.18	0.853	36.76	1.139	0.742	0.258	0.86	11.02	0.845	0.028	13.84	36.36	6.75
G.179	45.50	32.84	41.67	1.082	41.39	1.325	0.792	0.208	0.69	9.66	1.050	0.024	12.13	41.11	8.63
SK.101	41.73	23.90	34.82	0.735	34.12	1.004	0.669	0.331	1.10	13.83	0.671	0.035	17.38	33.44	5.03
SK.102	36.20	16.70	28.45	0.473	27.37	0.745	0.572	0.428	1.43	15.50	0.426	0.039	19.47	26.34	3.67
SK.104	43.67	30.50	40.58	1.023	40.26	1.277	0.777	0.223	0.74	10.17	0.993	0.025	12.77	39.95	7.98
SK.107	37.19	23.47	32.33	0.645	31.96	0.988	0.739	0.261	0.87	9.72	0.730	0.024	12.21	31.60	6.65
SK.108	42.30	26.63	37.97	0.876	37.25	1.102	0.676	0.324	1.08	14.67	0.745	0.037	18.43	36.55	5.18
GZ9730	37.00	23.33	29.17	0.516	28.58	0.839	0.667	0.333	1.11	11.67	0.560	0.029	14.66	28.00	5.00
GZ6296	43.83	31.17	40.50	1.010	40.00	1.229	0.730	0.270	0.90	12.67	0.897	0.032	15.91	39.51	6.39
GZ1368	45.90	30.90	38.40	0.895	37.66	1.112	0.673	0.327	1.09	15.00	0.748	0.038	18.84	36.94	5.12
IR11L465	40.67	19.40	27.53	0.446	26.59	0.734	0.588	0.412	1.37	14.27	0.432	0.036	17.92	25.69	3.86
WAB56	37.80	26.45	32.63	0.655	32.21	0.987	0.726	0.274	0.91	10.35	0.717	0.026	13.00	31.80	6.30
IRAT170	33.25	23.67	28.46	0.497	28.05	0.851	0.712	0.288	0.96	9.58	0.606	0.024	12.04	27.65	5.94
NERICA4	39.70	27.15	31.93	0.629	31.57	0.977	0.740	0.260	0.87	9.55	0.722	0.024	12.00	31.21	6.69
IR65600	42.04	25.00	37.52	0.843	36.54	1.043	0.630	0.370	1.23	17.04	0.657	0.043	21.41	35.59	4.40
IR68011	38.33	22.83	29.08	0.509	28.40	0.821	0.646	0.354	1.18	12.50	0.531	0.031	15.70	27.74	4.65
IR68552	41.27	25.98	30.63	0.579	30.27	0.935	0.737	0.263	0.88	9.29	0.689	0.023	11.67	29.92	6.60
IRGA318	36.17	25.07	30.62	0.572	30.11	0.902	0.693	0.307	1.02	11.10	0.625	0.028	13.94	29.61	5.52
IET1444	43.67	29.26	40.46	1.009	39.99	1.252	0.734	0.266	0.89	12.40	0.905	0.031	15.58	39.51	6.52
Max.	45.90	32.84	41.67	1.08	41.39	1.325	0.792	0.466	1.55	17.04	1.050	0.043	21.41	41.11	8.63
Min.	33.25	18.70	26.85	0.41	25.58	0.673	0.534	0.208	0.69	9.29	0.359	0.024	11.67	24.38	3.29
Mean	40.15	25.33	33.84	0.71	33.23	0.997	0.689	0.311	1.04	12.31	0.695	0.031	15.47	32.64	5.71

## Correlation Analysis

An acceptable index has to demonstrate a significant correlation with grain yield under both studied conditions [44] (Mitra, 2001). The correlation analysis between grain yield under both non-stress ( $Y_p$ ) and water stress ( $Y_s$ ) conditions and each of the drought indices was done to identify the most acceptable drought tolerance indices. The correlation coefficients between different tolerance indices are shown in Figure 1. The correlation coefficient between  $Y_p$  and  $Y_s$  was marginally significant, indicating that high yield potential under non-stress growing conditions wasn't associated with superior yield under stress. For example, the genotypes Sakha 101 and IR 65600-127-6-2 produced the highest yield under non-stress conditions but failed to produce high yields under drought conditions. Consequently, indirect selection for stress conditions depending on the performance of the studied genotypes in non-stress conditions is ineffective. The MP, STI, GMP, YI, DI, and HM indices were significantly positively correlated with grain yields ( $Y_p$  and  $Y_s$ ), showing that these indices were more effective in selecting high-yielding genotypes under both non-stress and stress conditions. Our findings lead us to the conclusion that MP, YI, GMP, and STI are only able to differentiate between specific genotypes under conditions of moderate drought stress. Additionally, there was a highly significant and positive correlation between  $Y_s$  and the YSI, DI, and GOL indices. These relationships were affected by drought intensity (difference between  $Y_s$  and  $Y_p$ ) and suggested that genotypes selected based on these indices were distinguished by drought tolerance parameters and might improve yield under stress conditions. The correlation between TOL, ATI, SSPI, YR, SSI, and  $Y_s$  was either not significant or highly significant and

negative. Therefore, these indices are suitable for determining rice genotypes with low yield and drought tolerance, as yield under stress decreased as the indices increased.

However, there was a positive correlation between Yp and MP, STI, GMP, YI, DI, and HM. Therefore, according to [47], a negative correlation between YR, SSI, TOL, ATI, and SSPI with Ys implies that selection based on SSI and TOL will increase yield under non-stress conditions (Yp). However, [48] demonstrated that a selection based on the minimum yield decrease under stress relative to favorable conditions (TOL) was unable to identify the best genotypes.

Positive and highly significant correlation coefficients between SSI, TOL, ATI, YR, and SSPI suggest they are comparable for selecting drought-tolerant genotypes. These findings suggested that SSI, TOL, ATI, YR, and SSPI were all capable of performing stress tolerance. These findings were previously confirmed by [49]. All subsets exhibited significant or highly significant correlations between MP, STI, GMP, YI, YSI, DI, and HM, with the exception of YR and SSI, for which the correlation coefficients were negative and highly significant. GOL was highly significant and positively correlated with MP, STI, GMP, YI, YSI, DI and HM. These findings were consistent with those of [49] and [30].

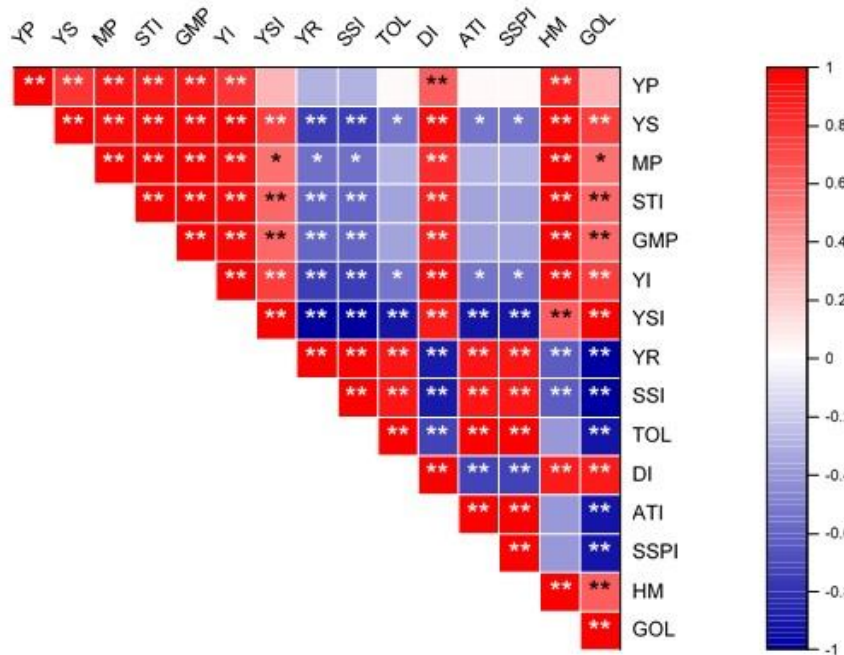


Figure 1. Corrplot depicting Pearson' s correlation between 15 drought tolerance indices with grain yield of 20 rice genotypes under normal (Yp) and drought condition (Ys).

Red squares indicate a positive correlation; blue squares indicate a negative correlation; and white squares indicate no correlation. The asterisks indicate significant correlations using a two-tailed t-test (\* and \*\* p < 0.05; and \*\*\* p < 0.01).

### Principle Component Analysis (PCA)

Principal component analysis simplifies complicated data by reducing the number of correlated variables to fewer variables known as principal components. Principal component analysis was used to examine the relationship between rice genotypes and drought tolerance indices by reducing the grain yields (Yp and Ys) and thirteen indices to only two components (PCA1 and PCA2). The eigenvalues of the first of the two main PCAs extracted were more than one (Eigen value >1). The eigenvalues for PC1 and PC2 were 6.72 and 2.91, respectively (Table 8). The PCA1 and PCA2 accounted for 99.61% of the total variance between drought stress indices, mainly by classifying the indices into distinct groups. These

findings are consistent with those of [50]. According to [51], selecting genotypes with high PCA1 and low PCA2 is appropriate for both non-stress and stress conditions.

Thus, the genotypes Giza 179, Sakha 104, IET1444, and GZ 6296-12-1-2-1 are superior genotypes with their high PCA1 and low PCA2 under both non-stress and stress conditions (Fig. 2). PCA1 contributed 69.49% of the total variation with Yp, Ys, MP, GMP, STI, YI, DI, HM, and GOL, in accordance with the analysis.

Table 8: Principal component analysis (PCA) for grain yield of rice genotypes based on non-stress and stress conditions and drought tolerance indices

Principal component analysis (PCA)	Eigen value	Percentage of variance	Cumulative variance
PCA1	6.72343	69.493	69.493
PCA2	2.91389	30.118	99.611

Consequently, the PCA1 is the yield potential and drought tolerance. However, PCA2 accounted for 30.12% of the total variability with SSI, SSPI, YR, and TOL. Consequently, the PCA2 can be referred to as a drought-sensitive dimension with a high yield under non-stress conditions and a low yield under stress conditions. Therefore, selecting genotypes with high PCA1 and low PCA2 is appropriate in both non-stress and stress conditions. The first two components, as reported by [30] and [36], represented 81.01% and 70.66%, along with 13.23% and 28.48% of the total variation, respectively.

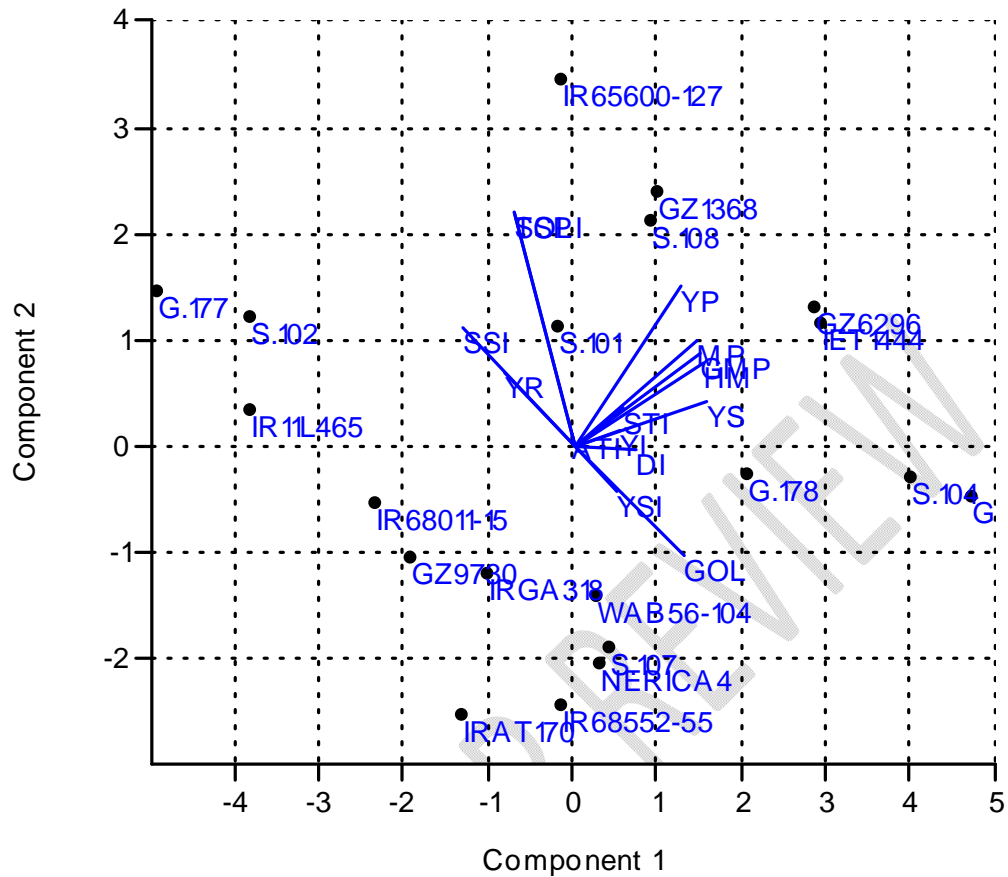


Figure2: Biplot diagram based on first two principal component axes of twenty rice genotypes according to mean measured of drought tolerance indices under normal and drought conditions.

The relationships (similarities and dissimilarities) between drought-tolerant indices and grain yield in Yp and Ys are graphically displayed in a biplot of PCA1 and PCA2 (Fig. 2). According to biplot analysis, the zero angles (perfect positive correlations) between YS and YI, between SSI and YR, between TOL and SSPI, between STI and HM, and between YSI and GOL were observed, which indicates that they are the same in the ranking of genotypes. MP, GMP, STI, and HM were highly positively correlated with grain yield under Yp and Ys (the smallest acute angles), showing that they rank the genotypes in a similar fashion

in these indices, and this means that selection based on these indices will result in an increasing grain yield in both conditions. Also, DI, YSI, and GOL were highly positively correlated with Ys, MP, GMP, STI, and HM, and the angles between them were less than 90 degrees (an acute angle); therefore, the selection based on these indices will result in an increasing grain yield in drought stress conditions. A strong positive correlation was found between SSI, TOL, SSPI, and YR (acute angles), indicating that they are closely associated in the ranking of the genotypes. The SSI, TOL, YR, and SPPI indices were negatively associated with Ys, as were the indices YSI, DI, GOL, YI, HM, GMP, STI, and MP. However, SSI, TOL, ATI, SSPI, and YR indices were positively associated with Yp (acute angle). The angles between DI, YSI, GOL, YI, and ATI with Yp and Ys were acute, respectively.

Using the biplot diagram (Fig. 2), the genotypes IET1444 and GZ 6296-12-1-2-1 were located between Yp and Ys and the indices of MP, GMP, STI, HM, and YI. The genotypes, namely Giza 179, Sakha 104, and Giza 178, had considerable correlation with other drought tolerance indices. The biplot analysis of the relationship between the above indices revealed that the most appropriate indices for selecting genotypes are MP, GMP, STI, HM, and YI under non-stress and drought conditions, as well as SSI, TOL, YSI, DI, YR, ATI, SSPI, and GOL under stress conditions. The result obtained from principal component analyses using biplots provides valuable information from the data analysis and confirms the correlation analysis. These findings were similar to the results of [36].

According to Fernandez's classification, the studied genotypes were divided into four categories based on their performance in non-stress and stress conditions using biplot analysis. The genotypes,

namely: Giza 179, Sakha 104, IET 1444, GZ 6296-12-1-2-1, Giza 178, GZ 1368-S-5-4, and Sakha 108, using STI, MP, GMP, and HM, presented high yields under both stress and non-stress (group A). Group B consisted of the genotypes Sakha 101 and IR 65600-127-6-2, which have a high yield response in non-stress conditions. The genotypes Sakha 107, IRAT 170, WAB 56-104, IRGA 318-11-6-2-6, NERICA -4, and IR 68552-55-3-2, using YSI, DI, and GOL, produced high yields under stress conditions and were included in Group C. Genotypes, namely: IR11L465, Giza 177, Sakha 102, and IR 68011-15-1-1, based on the most studied indices, had low grain yield performance in both conditions (Group D).

### **Cluster analysis**

The cluster analysis was used to place similar genotypes in one group in order to determine the variation among different genotypes and the genotypes' farness or nearness[52]. On the basis of the Yp, Ys, GMP, and STI indices, cluster analysis with the Paired group/chord method was used to divide the genotypes into four groups. Each cluster comprised genotypes with a high degree of similarity (Fig. 3). According to the dendrogram, three genotypes out of the twenty evaluated for drought conditions are located in cluster I, six genotypes are located in cluster II, two genotypes are located in cluster III, and nine genotypes are situated in cluster IV, respectively. Therefore, there was considerable variation among the studied genotypes for drought tolerance in rice. Hybridization or crossing between any distantly related populations is expected to yield more heterosis and vigorous plants.

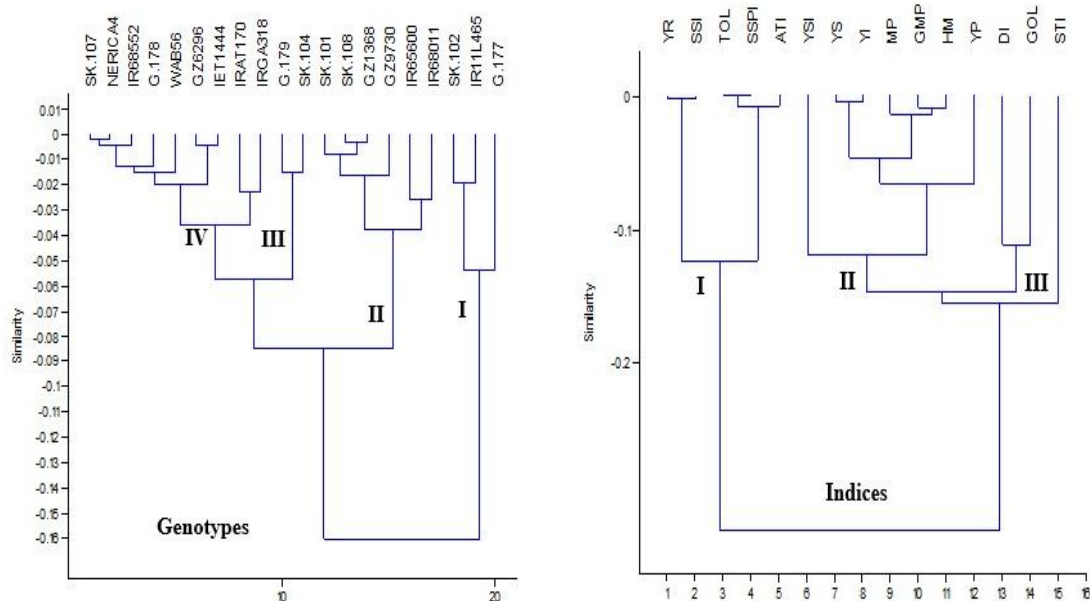


Fig. 3: Dendrogram between groups showing classification of genotypes and Yp, Ys and drought tolerance indices using Paired group/chord.

The first cluster (I) consisted of the genotypes Giza 177, Sakha 102, and IR11L465 that had the highest recorded values for YR, SSI, TOL, ATI, and SSPI indices and the lowest values for MP, STI, GMP, YI, YSI, DI, HM, and GOL indices. Thus, these genotypes were recognized as the most drought-sensitive and undesirable under non-stress conditions (Ys) and identified as sensitive genotypes to drought.

The second cluster (II) consisted of the genotypes, namely: GZ 1368-S-5-4, Sakha 108, Sakha 101, IR 65600-127-6-2, GZ 9730-1-1-1-1, and IR 68011-15-1-1. Regarding the genotypes GZ 1368-S-5-4 and Sakha 108, they had relatively high values of the indices MP, STI, GMP, YI, YSI, and HM, and grain yield under Yp and Ys, as well as relatively low values of YR and ATI. Thus, these genotypes are considered moderately tolerant to drought. Meanwhile, the genotypes, namely, Sakha 101 and IR 65600-127-6-2, had moderate values of MP, YI, and YSI and high grain

yield under non-stress conditions, so it's considered desirable to grow only under Yp conditions. The cluster III consisted of two genotypes, namely: Giza 179 and Sakha 104, which had the lowest recorded values for YR, SSI, TOL, ATI, and SSPI indices and the highest values for MP, STI, GMP, YI, YSI, DI, HM, and GOL indices. Thus, these genotypes were recognized as the most drought-tolerant and desirable under Ys. It seems that these indices have succeeded in selecting genotypes with high yields under both Yp and Ys conditions. Cluster IV is comprised of nine genotypes, namely: IET 1444, GZ 6296-12-1-2-1, Giza 178, Sakha 107, IRAT 170, WAB 56-104, IRGA 318-11-6-2-6, NERICA -4, and IR 68552-55-3-2. For the three genotypes, IET 1444, GZ 6296-12-1-2-1, and Giza 178 had relatively high values of MP, STI, GMP, YI, YSI, GOL, and HM indices and grain yield under Yp and Ys, as well as relatively low values of YR, SSI, and ATI. Thus, these genotypes are considered moderate to highly drought-tolerant. Thus, under stress conditions, the selection should be based on high rates of YI.

Regarding the genotypes Sakha 107, IRAT 170, IR 68552-55-3-2, WAB 56-104, IRGA 318-11-6-2-6, and NERICA -4, they had relatively the lowest values of YR, SSI, TOL, ATI, and SSPI indices among the studied genotypes, but unfortunately they couldn't have succeeded in having high MP, STI, GMP, and YI indices. So these genotypes are considered desirable only under Ys conditions. In Fig. 3, the cluster analysis for grain yields (Yp and Ys) based on the indices values tended to group into three clusters (I, II, and III). The cluster I consisted of the YR, SSI, TOL, SSPI, and ATI indices. Cluster II is comprised of Yp, Ys, MP, GMP, YSI, YI, and HM indices. While, the cluster III is comprised of STI, DI, and GOL. The tree diagram detected the minimum distance or

dissimilarity between the indices inside each group. While the highest distance was found among the indices of the two groups, these results indicated that each cluster contained drought tolerance indices that were highly similar. Cluster analysis has been used in drought tolerance studies by other researchers as well. [52] reported that among 14 elite rice genotypes, cluster analysis resulted in four clusters following Ward's method. The distribution pattern indicated that the maximum genotypes (5) were aggregated in cluster IV, while the minimum (2) were grouped into cluster II. Clusters I and III comprised 3 and 4 genotypes, respectively.

### **Ranking method**

The ranks of genotypes for YSI, YR, SSI, and GOL; for TOL, ATI, and SSPI; as well as for STI, GMP, and HM, were identical (Table 9). Additionally, the Ys, MP, YI, DI, and Yp indices all showed nearly identical ranks for the genotypes, suggesting that these criteria are equally effective in selecting genotypes. These results were consistent with the findings of [30] and [51]. The estimations of drought tolerance indices in Table 9 revealed inconsistency in identifying drought-tolerant genotypes based on a single criterion.

Different indices introduced different genotypes as drought-tolerant. For example, the genotype IR 68552-55-3-2 was drought-tolerant by both YSI and ATI indices, while it was sensitive to drought by both MP, STI, and GMP indices. To find the most suitable drought-tolerant genotypes based on all indices, the mean rank and standard deviation of all drought tolerance parameters were computed. Based on the rank method and all drought tolerance indices, Giza 179, followed by the genotypes Sakha 104, IET 1444, and GZ 6296-12-1-2-1, showed the best rank mean

with an almost low standard deviation and sum of rank. Thus, these genotypes were identified as the most drought tolerant genotypes. Further, the genotypes Giza 177, Sakha 102, and IR11L465 were the most sensitive under drought stress conditions. The other genotypes were identified as semi-tolerant or semi-sensitive to drought stress. The ranking method has been used for screening drought-tolerant cultivars by [30]and [36].

UNDER PEER REVIEW

Table 9: Rank, rank mean (R), standard deviation of ranks (SDR) and rank sum (RS) of drought tolerance indices.

Genotype	Drought tolerance indices															Rank method		
	YP	YS	MP	STI	GMP	YI	YSI	YR	SSI	TOL	DI	ATI	SSPI	HM	GOL	R	SDR	RS
G. 177	18	20	20	20	20	20	20	20	20	19	20	19	19	20	20	19.67	0.62	20.28
G. 178	8	5	8	7	7	5	3	3	3	8	5	8	8	7	3	5.87	2.10	7.97
G. 179	3	1	1	1	1	1	1	1	1	4	1	4	4	1	1	1.73	1.28	3.01
SK. 101	9	9	9	9	9	9	14	14	14	14	12	14	14	9	14	11.53	2.50	14.04
SK. 102	13	18	18	18	18	18	19	19	19	18	19	18	18	18	19	18.00	1.46	19.46
SK. 104	6	2	2	2	2	2	2	2	2	6	2	6	6	2	2	3.07	1.83	4.90
SK. 107	11	10	11	11	11	10	5	5	5	5	8	5	5	11	5	7.87	2.88	10.74
SK. 108	7	7	6	6	6	7	12	12	12	16	7	16	16	6	12	9.87	4.00	13.86
GZ9730	17	16	15	15	15	16	15	15	15	10	16	10	10	15	15	14.33	2.32	16.65
GZ6296	1	4	3	3	3	4	8	8	8	13	4	13	13	3	8	6.40	4.08	10.48
GZ1368	5	6	5	5	5	6	13	13	13	17	6	17	17	5	13	9.73	5.04	14.77
IR11L465	19	19	19	19	19	19	18	18	18	15	18	15	15	19	18	17.87	1.55	19.42
WAB56	10	11	10	10	10	11	9	9	9	7	10	7	7	10	9	9.27	1.33	10.60
IRAT170	20	15	17	17	17	15	10	10	10	3	15	3	3	17	10	12.13	5.67	17.80
NERICA4	12	12	12	12	12	12	4	4	4	2	9	2	2	12	4	7.67	4.50	12.17
IR65600	4	8	7	8	8	8	17	17	17	20	13	20	20	8	17	12.80	5.68	18.48
IR68011	16	17	16	16	16	17	16	16	16	12	17	12	12	16	16	15.40	1.80	17.20
IR68552	15	13	13	13	13	13	6	6	6	1	11	1	1	13	6	8.73	5.09	13.82
IRGA318	14	14	14	14	14	14	11	11	11	9	14	9	9	14	11	12.20	2.11	14.31
IET1444	2	3	4	4	4	3	7	7	7	11	3	11	11	4	7	5.87	3.14	9.00

UNDER PEER REVIEW

## CONCLUSIONS

There were significant differences among genotypes for all indices, indicating that genes controlling yield and drought tolerance differed across genotypes. The grain yields ( $Y_p$  and  $Y_s$ ) and all drought tolerance indices were highly  $h^2$  and GAM% and are usually able to select high-yielding genotypes under drought conditions. In general, the results of this study based on correlation coefficients, multivariate analysis, and a ranking method showed that among all drought tolerance indices, MP, GMP, STI, HM, and YI can be used as the most suitable indicators for screening drought-tolerant genotypes, and the genotypes Giza 179, followed by Sakha 104, IET 1444, and GZ 6296-12-1-2-1, were characterized by the highest tolerance to drought under the climate conditions of Egypt. Accordingly, they are considered parents for enhancing the drought tolerance of rice in Egypt's hybridization programs.

## References

1. Solis J, Gutierrez A, Mangu V, Sanchez E, Bedre R, Linscombe S, Baisakh N. Genetic mapping of quantitative trait loci for grain yield under drought in rice under controlled greenhouse conditions. *Frontiers in chemistry*. 2018 Jan 8; 5:129.
2. Chakravarthi BK, Naravaneni R. SSR marker based DNA fingerprinting and diversity study in rice (*Oryza sativa*. L). *African Journal of Biotechnology*. 2006;5(9).
3. Somerville C, Briscoe J. Genetic engineering and water. *Science*. 2001 Jun 22;292(5525):2217-.
4. Passioura J. The drought environment: physical, biological and agricultural perspectives. *Journal of experimental botany*. 2007 Jan 1;58(2):113-7.
5. Lafitte HR, Yongsheng G, Yan S, Li ZK. Whole plant responses, key processes, and adaptation to drought stress: the case of rice. *Journal of experimental botany*. 2007 Jan 1;58(2):169-75.
6. Hall AE. Is dehydration tolerance relevant to genotypic difference in leaf senescence and crop adaption to dry environments?. *Current topics in plant physiology (USA)*. 1993.

7. EL-Refae YZ, ElsherbinyHA, Fayed AM. Genetic Analysis of Yield Attributes in Rice for Water Deficit Under Egyptian Conditions. *Journal of Plant Production*. 2021 Oct 1;12(10):1039-48.
8. Kumar N, Singh PK, Vaishampayan A, Saini R, Ram M, Singh A, Singh NK. Genetic divergence analysis in rice under irrigated conditions. *Indian Journal of Plant Genetic Resources*. 2014;27(3):246-50.
9. Blum A. *Plant breeding for stress environments*. CRC Press, Boca Raton, FL. 1988;38-78.
10. Donde R, Kumar J, Gouda G, Gupta MK, Mukherjee M, Baksh SY, Mahadani P, Sahoo KK, Behera L, Dash SK. Assessment of genetic diversity of drought tolerant and susceptible rice genotypes using microsatellite markers. *Rice Science*. 2019 Jul 1;26(4):239-47.
11. Sabesan T, Suresh R, Saravanan K. Genetic variability and correlation for yield and grain quality characters of rice grown in coastal saline low land of Tamilnadu. *Electronic Journal of Plant Breeding*. 2009;1(1):56-9.
12. Singh SK, Singh CM, Lal GM. Assessment of genetic variability for yield and its component characters in rice (*Oryza sativa* L.). *Research in Plant Biology*. 2011 Oct 15;1(4).
13. Shukla S, Bhargava A, Chatterjee A, Singh SP. Estimates of genetic parameters to determine variability for foliage yield and its different quantitative and qualitative traits in vegetable amaranth (*A. tricolor*)[India]. *Journal of Genetics and Breeding (Italy)*. 2004.
14. Huang B. Role of root morphological and physiological characteristics in drought resistance of plants. *Plant-Environment Interactions*. Marcel Dekker Inc., New York. 2000 Jul 12:39-64.

15. Fischer RA, Maurer R. Drought resistance in spring wheat cultivars. I. Grain yield responses. *Australian Journal of Agricultural Research*. 1978;29(5):897-912.
16. Rosielle AA, Hamblin J. Theoretical aspects of selection for yield in stress and non-stress environment 1. *Crop science*. 1981 Nov;21(6):943-6.
17. Fernandez GC. Effective selection criteria for assessing plant stress tolerance. In *Proceeding of the International Symposium on Adaptation of Vegetables and other Food Crops in Temperature and Water Stress*, Aug. 13-16, Shanhua, Taiwan, 1992 1992 (pp. 257-270).
18. Gavuzzi P, Rizza F, Palumbo M, Campanile RG, Ricciardi GL, Borghi B. Evaluation of field and laboratory predictors of drought and heat tolerance in winter cereals. *Canadian Journal of Plant Science*. 1997 Oct 1;77(4):523-31.
19. Bouslama M, Schapaugh Jr WT. Stress tolerance in soybeans. I. Evaluation of three screening techniques for heat and drought tolerance 1. *Crop science*. 1984 Sep;24(5):933-7.
20. Lan J. Comparison of evaluating methods for agronomic drought resistance in crops. *Acta Agriculturae Boreali-occidentalis Sinica*. 1998; 7:85-7.
21. Golestani Araghi S, Assad MT. Evaluation of four screening techniques for drought resistance and their relationship to yield reduction ratio in wheat. *Euphytica*. 1998 Oct; 103:293-9.
22. Hossain AB, Sears RG, Cox TS, Paulsen GM. Desiccation tolerance and its relationship to assimilate partitioning in winter wheat. *Crop Science*. 1990 May;30(3):622-7.
23. Moradi H, Akbari GA, Khorasani SK, Ramshini HA. Evaluation of drought tolerance in corn (*Zeamays L.*) new hybrids with using stress

- tolerance indices. *European Journal of Sustainable Development*. 2012 Oct 1;1(3):543-.
24. Moosavi SS, Yazdi Samadi B, Naghavi MR, Zali AA, Dashti H, Pourshahbazi A. Introduction of new indices to identify relative drought tolerance and resistance in wheat genotypes. *Desert*. 2007 Dec 1;12(2):165-78.
25. Mitra J. Genetics and genetic improvement of drought resistance in crop plants. *Current science*. 2001 Mar 25:758-63.
26. Klute A. Water retention: laboratory methods. *Methods of soil analysis: part 1 physical and mineralogical methods*. 1986 Jan 1; 5: 635-62.
27. International Rice Research Institute (IRRI). *Standard Evaluation System (SES) for Rice*, 2013, 5th ed.; International Rice Research Institute (IRRI): Los Banos, Philippines.
28. Gomez KA, Gomez AA. *Statistical procedures for agricultural research* (2ed.). John Wiley and Sons, New York. 1984; 680.
29. Fehr WR. *Principle of Cultivars Development*. Macmillan publishing company. A division of Macmillan Inc. New York. 1987; 1:1-465.
30. Baghyalakshmi K. Determination of Stress Indices for Selection of Superior Genotypes under Drought Situation in Rice (*Oryza sativa* L.). *International Journal of Agriculture Sciences*, ISSN. 2016:0975-3710.
31. Burton GW. Quantitative inheritance in grasses. *Pro VI IntGrassl Cong*, 1952. 1952:277-83.
32. Lothrop JE, Atkins RE, Smith OS. Variability for Yield and Yield Components in IAP1R Grain Sorghum Random-Mating Population. I. Means, Variance Components, and Heritabilities 1. *Crop science*. 1985; 25(2): 235-40.

33. Farshadfar E, Rasoli V, Teixeira da Silva JA, Farshadfar M. Inheritance of Drought Tolerance Indicators in Bread Wheat ('Triticumaestivum' L.) Using a Diallel Technique. Australian Journal of Crop Science. 2011 Jul; 5(7):870.
34. Sharifi P, Aminpanah H, Erfani R, Mohaddesi A, Abbasian A. Evaluation of Genotype  $\times$  Environment Interaction in Rice Based on AMMI Model in Iran. Rice Science. 2017 May 1; 24(3):173-80.
35. Jaruchai W, Monkham T, Chankaew S, Suriharn B, Sanitchon J. Evaluation of stability and yield potential of upland rice genotypes in North and Northeast Thailand. Journal of Integrative Agriculture. 2018 Jan 31; 17(1):28-36.
36. El-Hashash EF, EL-Agoury RY. Comparison of grain yield-based drought tolerance indices under normal and stress conditions of rice in Egypt. Scholars Journal of Agriculture and Veterinary Sciences. 2019; 6(1):41-54.
37. Saba J, Moghadam MO, Ghassemi K, Nishabouri MR. Genetic properties of drought resistance indices. Journal of Agricultural Science and Technology. 2010 May 15; 3:43-9.
38. Saad RE, Hadje AL, Batma AG, Taarabt M. Ability of drought selection indices to identify the best drought tolerant and high yielding genotypes in Mediterranean environment. Int. J. Plant. Breed. Genet. 2016; 3(5):211-225.
39. Couto MF, Peternelli LA, Barbosa MH. Classification of the coefficients of variation for sugarcane crops. Ciência rural. 2013 Jun; 43(6):957-61.
40. Sangaré JR, Konaté AK, Cissé F, Sanni A. Assessment of genetic parameters for yield and yield related-traits in an intraspecific

- rice (*Oryza sativa* L.) Population. *Journal of Plant Breeding and Genetics*. 2017 Aug 22;5(2):45-56.
41. Darvishzadeh R, Pirzad A, Bernousi I, Abdollahi Mandoulakani B, Azizi H, Akhondi N, PoormohammadKiani S, Sarrafi A. Genetic properties of drought tolerance indices in sunflower. *Acta Agriculturae Scandinavica, Section B-Soil & Plant Science*. 2011 Oct 1;61(7):593-601.
42. Anwar J, Subhani GM, Hussain MA, Ahmad J, Hussain M, Munir M. Drought tolerance indices and their correlation with yield in exotic wheat genotypes. *Pak. J. Bot.* 2011 Jun 1;43(3):1527-30.
43. Abdel Meguid E, Ke Y, Ji J, El -Hashash AH. Stem cells applications in bone and tooth repair and regeneration: New insights, tools, and hopes. *Journal of cellular physiology*. 2018 Mar;233(3):1825-35.
44. Khan IM, Dhurve OP. Drought response indices for identification of drought tolerant genotypes in rainfed upland rice (*Oryza sativa* L.). *International Journal of Science, Environment and Technology*. 2016;5(8):73-83.
45. Garg HS, Bhattacharya C. Drought tolerance indices for screening some of rice genotypes. *IJABR*. 2017; 7(4):671-674.
46. Singh SP, Kumar A, Satyendra, Kumar M, Nahakpam S, Sinha S., Smrity, Sundaram P, Kumar S, Singh PK. Identification of drought tolerant rice (*Oryza sativa* L.) genotypes using drought tolerance indices under normal and water stress condition. *Int. J. Curr. Microbiol. App. Sci. Special Issue*. 2018; 7:4757-4766.
47. Mardeh AS, Ahmadi A, Poustini K, Mohammadi V. Evaluation of drought resistance indices under various environmental conditions. *Field Crops Research*. 2006 Aug 1;98(2-3):222-9.

48. Rizza F, Badeck FW, Cattivelli L, Lidestri O, Di Fonzo N, Stanca AM. Use of a water stress index to identify barley genotypes adapted to rainfed and irrigated conditions. *Crop science*. 2004 Nov 1; 44(6):2127-37.
49. Rahimi M, Dehghani H, Rabiei B, Tarang AR. Evaluation of rice segregating population based on drought tolerance criteria and biplot analysis. *International Journal of Agriculture and Crop Sciences*. 2013 Jan 16; 5(3):194.
50. Qamar ZU, Akhtar J, Ashraf M, Akram M, Hameed A. A multivariate analysis of rice genetic resources. *Pakistan Journal of Botany*. 2012; 44(4):1335-40.
51. Amiri R, Bahraminejad S, Sasani S, Ghobadi M. Genetic evaluation of 80 irrigated bread wheat genotypes for drought tolerance indices. *Bulgarian Journal of Agricultural Science*. 2014; 20(1):101- 11.
52. Iqbal T, Hussain I, Ahmad N, Nauman M, Ali M, Saeed S, Zia M, Ali F. Genetic variability, correlation and cluster analysis in elite lines of rice. *Journal of Scientific Agriculture*. 2018 Mar 3; 2:85- 91.