

### **Assessing the Potential Impacts of Climate Change Using Long-Term Historical Weather Data on Evapotranspiration (ET) and Groundwater Contribution to ET of Wheat and Cotton Crops Determined Through Lysimeters**

#### **ABSTRACT**

Assessing the potential impacts of climate change on crop evapotranspiration (ET), groundwater contribution (GWC) towards meeting ET and yield is crucial in allocating water resources particularly in the areas where shallow water-table depths (WTDs) are expanding on larger area. The impact of climate change on crop ET and yield has been evaluated in the past by indirect methods using simulation models. However, those models are lacking the function of GWC which is one of the most important parameter while determining ET at different water-table depths (WTDs) and its impact on yield. Direct methods (without simulation models) using long term historical data (observed data) provides more accurate results of climate change impact on ET, GWC towards meeting ET and yield at different WTDs. In this study, long-term historical weather data for the last 34 years (1987-2020) was analyzed to examine the trends of mean temperature and rainfall and their relationship and impact on wheat and cotton ET, GWC to ET, yield and WUE data obtained from lysimetric studies. These studies were carried out during 1986-87 and 2017-21 periods at 1.50 m, 2.25 m, and 2.75 m WTDs in sultanpur soil series (silt loam textured) and miani soil series (silty clay loam textured). The mean daily temperature has increased 0.45 °C and rainfall 75.5 mm/year over a period of 1987-2020 which is witnessing the climate change. Wheat ET is increased, GWC contribution to ET is decreased and, yield and WUE is highest during the cropping periods of 2017-21 as compared to 1986-87. Climate change has decreased cotton ET and GWC towards meeting ET. It has also reduced the wheat and cotton cropping cycle by 8 days and 21 days. Higher magnitude of rainfall (during July-September) in 2019 and 2020 resulted in reducing cotton average yield of 2017-20 compared to 1987. The study demonstrates that irrigation allocation should be increased for wheat and decreased for cotton particularly in the shallow water-table areas under sultanpur soil type where water-table remains at 1.50 m – 2.25 m depths. Moreover, cotton crop should be cultivated by the 1<sup>st</sup> week of April, so that highest yield of cotton could be harvested before onset of monsoon.

**Keywords:** climate change, evapo-transpiration, groundwater contribution, crop yield, water productivity.

#### **1. INTRODUCTION**

Globally, climate change and its consequences have been witnessed. Climate change may occur naturally, however, human activities have been proven to be the major driver in occurring it. Since the 18<sup>th</sup> century, burning of fossil fuels such as coal, oil and gas have been increased that has resulted in producing the heat-trapping gases. The ever changing climate constitutes a major challenge and its effects being severe in developing countries (Morton, 2007). In consequences of the climate change, the mean annual global temperature has increased and precipitation patterns have been changed (Solomon et al., 2007). It has been mentioned in the 5<sup>th</sup> assessment report of the IPCC that global warming has been taken place during the recent past and will be going on during 21<sup>st</sup> century (IPCC, 2014). If climate change continued upto the end of 21<sup>st</sup>

century, this may result in increasing the global mean temperature by 1.4 °C to 5.8 °C and would reduce fresh water resources substantially. This would ultimately reduce the water availability for the crops cultivation (Tadross and Wolski, 2010). Pakistan is among the most affected countries due to climate change with increasing vulnerability over time, although the country is contributing negligible amounts to global warming. Pakistan was ranked 12<sup>th</sup>, 8<sup>th</sup>, and 7<sup>th</sup> in 2012, 2015, and 2016, respectively, by Climate Risk Index (Kreft et al., 2017). It is projected that by the end of this century, the annual mean temperature in Pakistan is expected to rise by 3°C to 5°C for a central global emissions scenario, while higher global emissions may yield a rise of 4°C to 6°C (Chaudhry, 2017).

Irrigation water demands are particularly sensitive to changes in precipitation and temperature (Frederick and Major, 1997). Any change in climatic parameters due to global warming or climate change will also affect crop evapotranspiration (ET). The irrigation water allocation in Pakistan is based on the previous data of crop ET. Due to climate change, the data may no longer be reliable for irrigation allocation and may result in yield loss if crop water demand is not fulfilled. For the proper irrigation water management and optimum crop production, irrigation allocation needs to be modified under the present climate change scenario. Any change in crop ET will likely have a profound effect on agriculture and water resource planning and management. Wheat and cotton are the two major crops of Pakistan which contributes significantly in the economy of Pakistan. Different studies have been conducted on assessing climate change impact on wheat and cotton crops through indirect method by using simulation models. Some extract of the available literature on climate change impact assessment on wheat and cotton ET, yield and yield attributes through simulation models is given below.

Rajabi et al., (2022) estimated wheat ET as 686.1 mm (current situation), 819.6 mm (RCP4.5) and 840.1 mm (RCP8.5) through GFDL-ESM2M and 686.1 mm (current conditions), 731.81 mm (RCP4.5) and 748.24 mm (RCP8.5) through HadGEM2-ES model. Hordofa et al., (2022) used AquaCrop model to assess the climate change impact on wheat yield and crop water productivity in Ethiopia. They analyzed weather data for the baseline period of 1981-2020 and future period of 2026-2095. They bifurcated the baseline and future periods into wet (331 mm/year), normal (206 mm/year) and dry (133 mm) rainfall years. They found decrease in crop water productivity in the future and significant reduction in yield of wheat (60%-80%) during the dry years as compared to the wet years (30%-51%) and normal years (18%-30%). Kiani and Iqbal (2018) while processing 25 years (1991-2015) weather data in Auto Regressive Distributed Lag (ARDL) Model found increase in wheat yield with an increase in the humidity and temperature while rainfall led to decrease the yield.

Arshad et al., (2021) used long term historical weather data (1961-2015) to assess climate change impact on cotton growth and yield in Punjab, Pakistan. Using APSIM model, they found shrinkage of 2.30 days/decade to 5.66 days/decade in the duration between the sowing to physiological maturity, and 4.23 days/decade shrinkage in phenology stage (duration between sowing to maturity). Due to the change in climatic pattern, cotton yield reduced by 18.2% in the growing period of 1961 to 2015. Rashid et al., (2020) processed long term historical weather data (1981-2015) through ARDL testing model to assess climate change impact on cotton yield. The model predicted increase in yield with an increase in the rainfall and maximum temperature, while decrease in yield with the decrease in minimum temperature. Raza and Ahmad (2015) found quite different results. They analyzed 30 years data of temperature and rainfall (1981-2010) using Fixed Effect Model (validation was carried out through Hausman Test) to assess

climate change impact on cotton yield in the Sindh and Punjab provinces. They found rise of temperature is the main factor that reducing cotton yield in both of the provinces, however, Sindh is more susceptible.

However, these studies are lacking of considering the water-table function, which should be considered while developing irrigation scheduling for wheat and cotton crops as it is a source of sub-surface irrigation reducing the irrigation water requirements (Ashraf et al., 2018). Utilization of shallow WTDs ( $\leq 2.00$  m) as subsurface irrigation may led to save substantial amount of water. This will narrow the gap between the increasing water demands due to climate change (Nosetto et al., 2009). Quantification of climate change impacts on wheat and cotton crop ET, yield and other related parameters becomes particularly important for arid regions particularly where shallow WTDs are prevailing. About 4.48 million hectares (Mha) irrigated area of the Sindh province of Pakistan has WTD within 1.50 m and 1.06 Mha irrigated area has WTD within 1.50-3.00 m (GoP, 2015). To sustain the production of wheat and cotton crops in the arid regions like Sindh province under shallow WTDs, it is imperative to understand the impacts of changes in temperature and precipitation, and other weather parameters on crop ET, GWC towards meeting ET, yield and WUE.

There have been no such direct studies have been conducted for wheat and cotton particularly the lysimetric studies which give much accuracy. Lysimeters are expensive in construction and provides facility to measure GWC that cannot be measured in open field condition. Moreover, lysimetric studies are particularly helpful for shallow water-table areas as groundwater contribution is significant there. The current study aimed to assess the climate change impact (variation in long term observed climatic data i.e. 1987-2020) on ET, GW contribution towards meeting ET, yield and WUE of wheat and cotton crops grown during the cropping periods of 1986-87 and 2017-21 at different WTDs and soil types using lysimetric setup.

## **2. MATERIALS AND METHODS**

### **2.1 Experimental Site and Design**

The lysimetric experiments were performed during the cropping periods of 1986-87 and 2017-21. Wheat was cultivated from November to March and cotton from April to October. The experiments were conducted by using drainage type lysimeters at Drainage and Reclamation Institute of Pakistan (DRIP), Tando Jam ( $25^{\circ} 25' 34''$ ,  $68^{\circ} 29' 47''$ ) (Figure 1). The experiments were conducted based on the principles of randomized complete block design (RCBD) at three different WTDs (1.50 m, 2.25 m and 2.75 m from ground surface) and in two soil types (sultanpur soil series - silt loam texture and Miani soil series - silty clay loam texture).

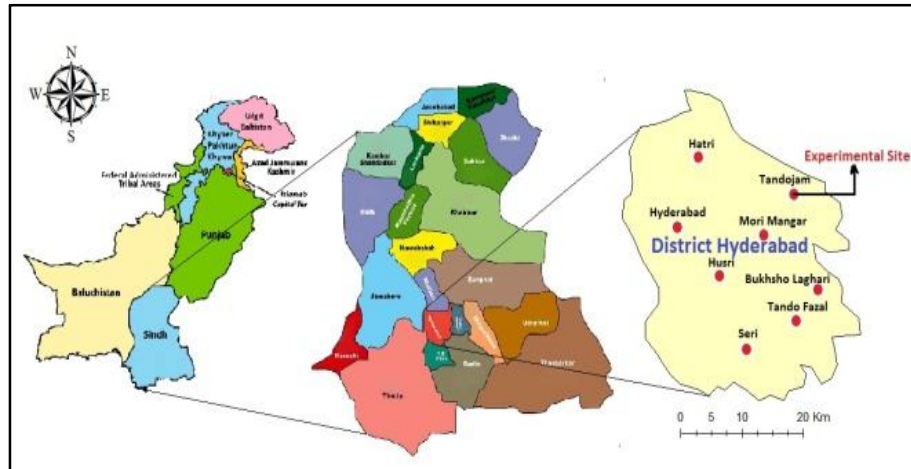


Figure 1: Location of the experimental site

## 2.2 Lysimeters Description

During the year 1985, with the help of Dutch government, twelve drainage type and square shaped lysimeters were constructed at DRIP Tando Jam (Figure 2). These lysimeters are leakage proof made up of reinforced cement concrete (RCC). Each of them is measuring as 3.05 m x 3.05 m x 5.40 m and is provided with filter screens, non-calcareous spawls and graded gravel filter material, drainage outlet and water feeding arrangement. To maintain the WTDs and to measure the GW contribution to crop ET, mariotte graduated bottles are also installed on all the twelve lysimeters.

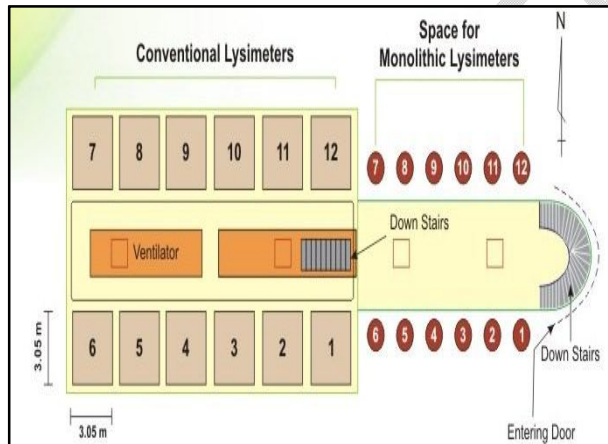


Figure 2: Schematic Diagram of Lysimeters

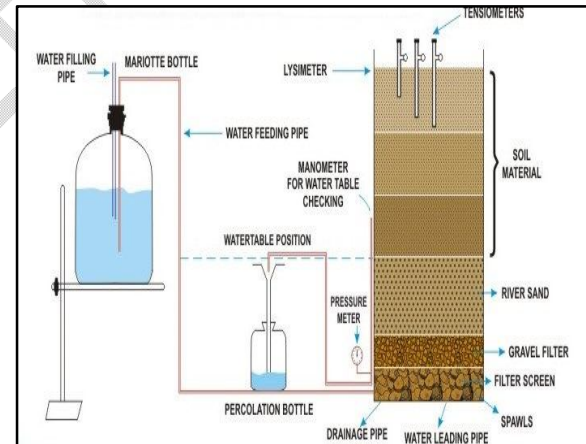


Figure 3: Diagram of equipment's at lysimeters

To check the WTDs inside lysimeters, twelve piezometers each 4 m long are installed on all twelve lysimeters. Six lysimeters are filled with sultanpur soil series (silt loam) and other six with miani soil series (silty clay loam) up to a depth of 2.40 m. The remaining portion (3 m) below the soil material was filled with the filter material (river sand, gravel filter, filter screen and spawls) (Figure 4). Both soil series are representative soil types of the Sindh province.

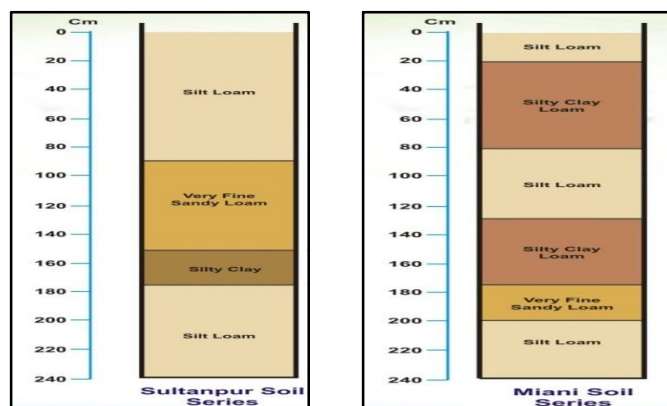


Figure 4: Diagram of the soil series filled in lysimeters

### 2.3 Maintenance of WTDs and GW contribution

Marriotte graduated bottles (52 lit capacities) were used to maintain the water-table (WT) at different depths (1.50, 2.25 and 2.75 m from ground surface) in the lysimeters. The mouth of each Marriotte bottle was capped with the double-hole rubber bung. From these rubber bungs, two silver tubes were passed upto the inner end of Marriotte bottle. The upper end of one silver tube (6.75 mm) was opened in the atmosphere and the second one (10 mm) was connected to the water feeding PVC rubber pipe (12.7 mm) attached at the bottom of lysimeters through gate valves. The bottom of the Marriotte bottle was positioned in line with different WT levels maintained in lysimeters. Thereafter, water from Marriotte bottle was supplied into the lysimeter to raise the WTDs. Before, commencement of the study, it took about one week to maintain the WTDs. Thereafter, soaking dose was applied and when lysimetric soil came into the sowing condition, the crop was sown. After crop sowing, any drop in WT in a lysimeter induced the flow of water from Marriotte bottle towards the lysimeter to maintain the WTDs. The water level declined in Marriotte bottles was compensated by re-filling the bottles completely. This enabled to measure the contribution of groundwater to meet the crop ET through subsurface irrigation.

### 2.4 Sowing of seeds

Wheat seed was sown @ 100 kg/ha keeping 23 cm rows spacing. The cotton seeds were sown through hand driller @ 12 kg/ha keeping the row spacing of 0.75 m. Before applying the 1st irrigation, the thinning of germinated plants were carried out to maintain the plant spacing of 20 cm (Awan *et al.*, 2011). To avoid the oasis effect (heat effect from lysimetric walls and bare land), same crops were grown around lysimeters upto a distance of 3m.

### 2.5 Irrigation scheduling in lysimeters

The irrigation was applied when the available soil moisture in the crop effective root zone depleted between 50-55%. The root depth of wheat and cotton is 0.90 m. However, each crop uptakes 70% of its water and nutrients from the top 50% root zone called effective root zone depth. Hence, for irrigation scheduling purpose, gravimetric soil samples were taken layer wise upto 45 cm depth (at an interval of 15 cm). As, soil moisture depletion is equivalent to the net irrigation requirement (Allen *et al.*, 1998); therefore irrigations were applied equal to moisture depleted therein the root zone (70-75 mm). The canal water was collected in a reservoir from where it was pumped to an overhead water tank (2 m high). From this tank, irrigation was

applied to lysimeters through a pipeline. A water meter installed on the main inflow pipeline was used to measure the volume of water applied to each lysimeter.

## 2.6 Fertilizer application

The chemical fertilizers such as N, P and K were applied to wheat crop @ 120:90:60 kg/ha (Phullan *et al.*, 2017). The entire quantity of P and K was applied once as basal dose during the land preparation for seed sowing. The N was split into three identical quantity and applied at the time of 1<sup>st</sup>, 2<sup>nd</sup> and 3<sup>rd</sup> irrigations. For cotton crop, NPK was applied @ 200-57-62 kg/ha (Ali *et al.*, 2003). During the preparation of lysimetric soil for seed sowing, the entire dose of P and K was applied as basal dose. However, the quantity of N fertilizer was split into two identical quantity and applied during the 1st and 3rd irrigations.

## 2.7 Determination of crop ET

Evaporation of water from the soil surface and transpiration from plants leaves and tissues is combined in one term called evapotranspiration (ET). It is difficult to measure the both parameters separately. However, the crop ET was calculated using water balance equation given below:

$$ET = I + S + R - D \pm SMD$$

whereas, ET = crop evapotranspiration (mm), I = surface irrigation (mm), S = subsurface irrigation or GW contribution (mm), R = rainfall (mm), D = drainage effluent (mm) in response of irrigation applied or rainfall occurrence, and SMS = soil moisture storage i.e. difference in soil moisture storage before sowing and after harvesting of crop

## 2.8 Computation of ET<sub>o</sub>

The reference evapotranspiration (ET<sub>o</sub>) was calculated using the equation developed by Modified Penman (Doorenbos & Pruitt, 1975), which is given below.

$$ET_o = W \cdot R_n + (1 - W) \cdot f(U) - (e_a - e_d)$$

Whereas; ET<sub>o</sub> = Reference evapotranspiration (mm/day), W = Temperature - related weighting factor, R<sub>n</sub> = Net radiation in equivalent evaporation (mm/day), F (U) = Wind related function, (e<sub>a</sub> - e<sub>d</sub>) = Difference between the saturation vapor pressure at mean air temperature and mean actual vapor pressure (m bar). These parameters were further computed using the relations given by Doorenbos and Pruitt (1975). However, ET<sub>o</sub> depends on climatic data i.e. maximum and minimum temperatures, relative humidity, wind speed and sunshine hours. To record these parameters, a meteorological observatory has been installed at about 50 m from the lysimeters.

## 2.9 Yield and WUE

Harvesting of wheat was started when the crop ripened and turned completely to yellowish color as observed during the last three to four weeks of March. After starting flowering, cotton grows, flowers, develops bolls and produces the fibers simultaneously, even during the last fiber picking, some of the green bolls leftovers on the plants. During each cotton cropping year, 3 to 4 times cotton fiber was picked. Initially, the yield was measured for each lysimeters and converted to kilogram per hectare (kg/ha). The yield (kg) of crops under each treatment was divided by amount of water consumed (m<sup>3</sup>) to determine water use efficiency of crops (kg/m<sup>3</sup>).

## 2.10 Trend analysis of the climatic parameters

For the long term analysis to look at the climate change variations, the long term temperature, rainfall, humidity, sunshine hours, wind speed, evaporation and reference evapotranspiration, data were explored for the station in study area. The long term data available was from Tando Jam station ranging from 1987 – 2020 which also defines the average climate conditions for the study area. The data was split into the two parts i.e. 1987-2003 and 2004-2020. The averages of the each part was made and subtracted from the other one. The difference in averages of the weather parameters is the indicator of climate change.

## 2.11 Statistical analysis

To compare the effects of the different WTDs and soil types, the data obtained from the lysimeters were recorded and analyzed statistically using analysis of variance (ANOVA) procedures at 95% confidence interval ( $\alpha = 0.05$ ). All statistical analysis was conducted using Statistix Software Package Version 8.1.

## 3. RESULTS AND DISCUSSION

### 3.1 Climate Change – Trend Analysis

Climate change is the long term shift in temperatures, rainfall and weather patterns. The results of this study show the trend of 34 years (1987 – 2020) period of climatic parameters i.e. temperature, rainfall, wind speed, sunshine hours, humidity, reference evapotranspiration and evaporation (Table 1). The 34 years data was divided into two parts i.e. 1987-2003 and 2004-2020. The average of each part was made and difference in averages of the climatic parameters showing the change in climate with increasing or decreasing trend over the longer period. In general the temperature, rainfall, and sunshine hours are showing the rising trend and inversely the wind speed, humidity, reference evapotranspiration and evaporation are representing the decreasing trend.

Table 1: Climatic parameters measured at DRIP, Tando Jam

Climatic parameters	Avg. 1987-2003	Avg. 2004-2020	Increasing / decreasing trend
Temperature (°C)	26.38	26.83	+ 0.45
Rainfall (mm)	128.6	204.1	+ 75.5
Wind speed (Knots)	3.80	2.60	- 1.20
Sunshine (Hrs/day)	8.90	9.72	+ 0.82
Humidity (%)	66.51	63.52	- 2.99
Reference ET (mm)	5.17	4.68	- 0.49
Evaporation (mm)	6.88	6.26	- 0.62

Figure 5 showing the rising trend in average annual temperature. An increase in mean daily temperature by 0.45 °C has been observed during 34 years period (1987-2020). The increasing temperature shortening the cropping days even some studies have projected shortening of crop cycle upto 50 days (Bouras *et al.*, 2019). A rising temperature may increase the crop ET due to increase in the transpiration (Peng *et al.*, 2004). Moreover, crop yield may also be decreased with the rising temperature mainly because of heat stress (Herwaarden *et al.*, 1998).

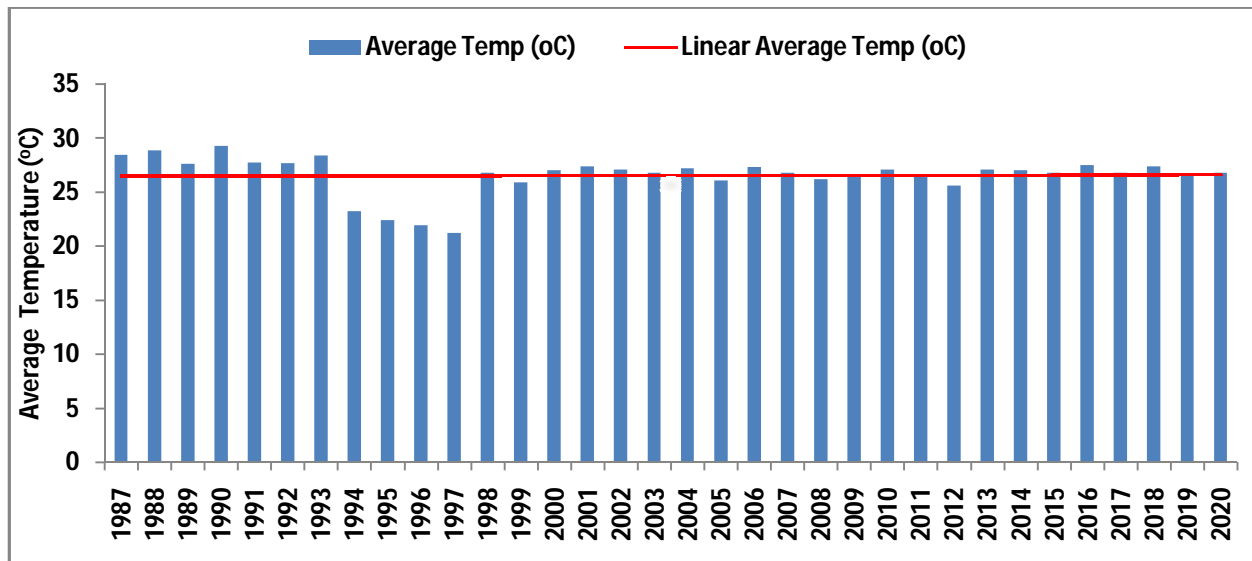


Figure 5: Temperature variation from 1987 to 2020

The magnitude of rainfall has been increased with the passage of time. Figure 6 showing the rising trend in average annual rainfall in the study area. Within a period of 34 years (1987-2020), average rainfall has been increased by 75.5 mm/year. This will raise water-table depths in Sindh province leading to water-logging and water-logging induced salinity. High water-table ( $\leq 1.50$  m) is already prevailing in the Sindh province (Gul et al., 2018). The situation will become worsen if the management practices shall not carry out. It is reported that increase in magnitude, intensity and frequency of rainfall has forecasted in the world and the net outcome impact of climate change is predicted to the water-logging and water-logging induced salinity (IPCC, 2014).

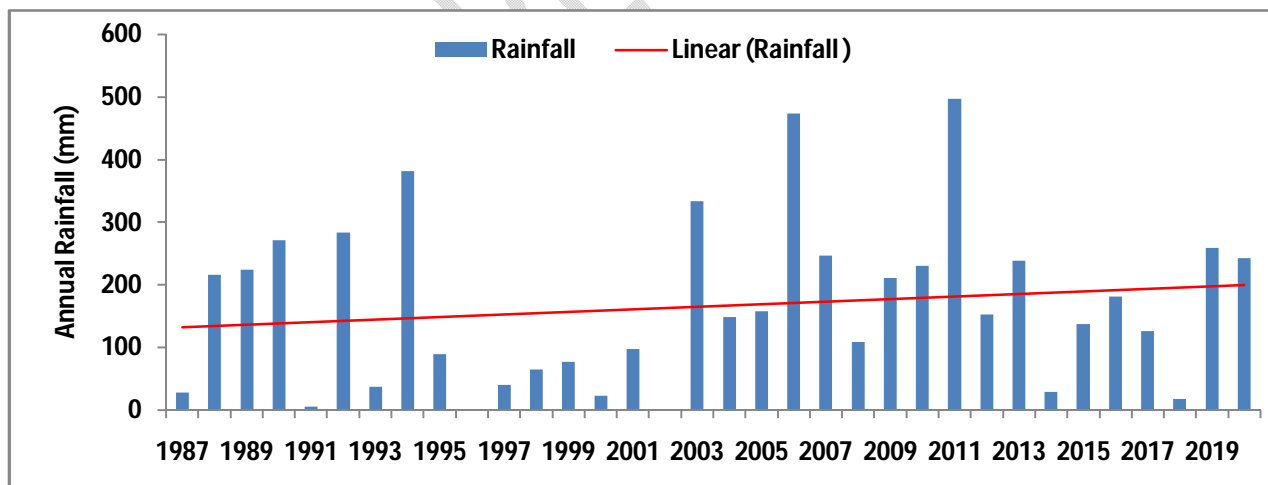


Figure 6: Rainfall variation from 1987 to 2020

Figure 7 showing the decreasing trend in average annual wind speed in the study area. A low wind speed may cause decrease in evapo-transpiration since wind is governing factor towards increase or decrease in evaporation (Wang et al., 2010). Wind speed during 1987-2003 was 3.80 knots and reduced to 2.60 knots during 2004-2020. Mean daily wind speed has been decreased by 1.2 knots.

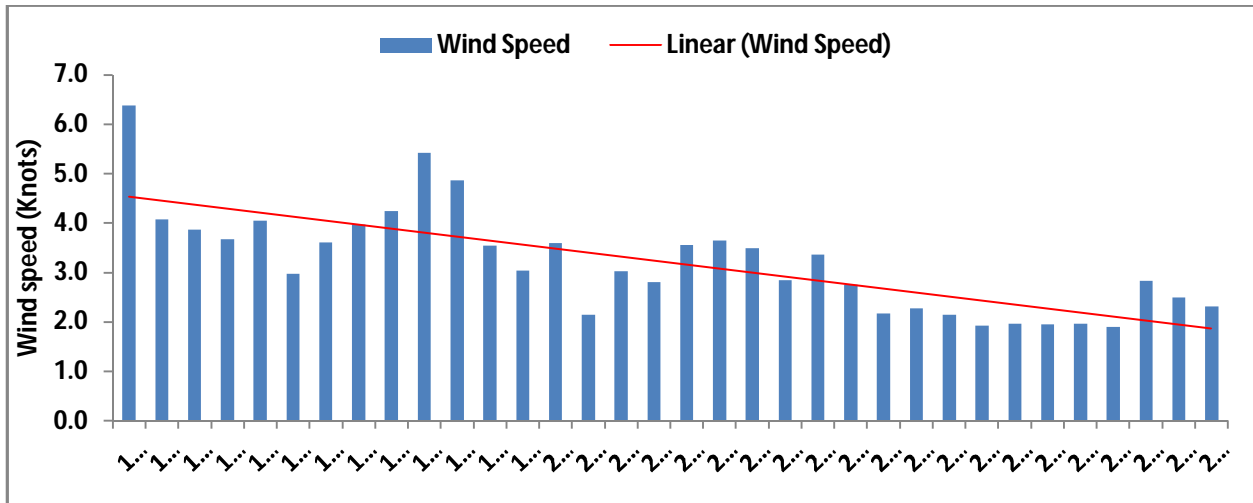


Figure 7: Wind speed variation from 1987 to 2020

Sunshine hours are the duration of sunshine on the earth's surface. It is measured through Campbell recorder. In this device a glass sphere concentrates sunlight on a card and the amount of scorching records the amount of sunlight that had fallen on it. When the sun radiation exceeds the  $120 \text{ w/m}^2$ , card starts scorching till the radiation intensity decreases. Figure 8 showing the increasing trend in average annual sunshine hours/day in the study area. Average sunshine (hours) has been increased by 0.82 hours/day. The increasing sunshine hours may cause change in temporal patterns of crop ET as the peak ET days will come earlier than its previous pattern. This will also decrease the cropping cycle owing to that many other problems related to crop management may be increased.

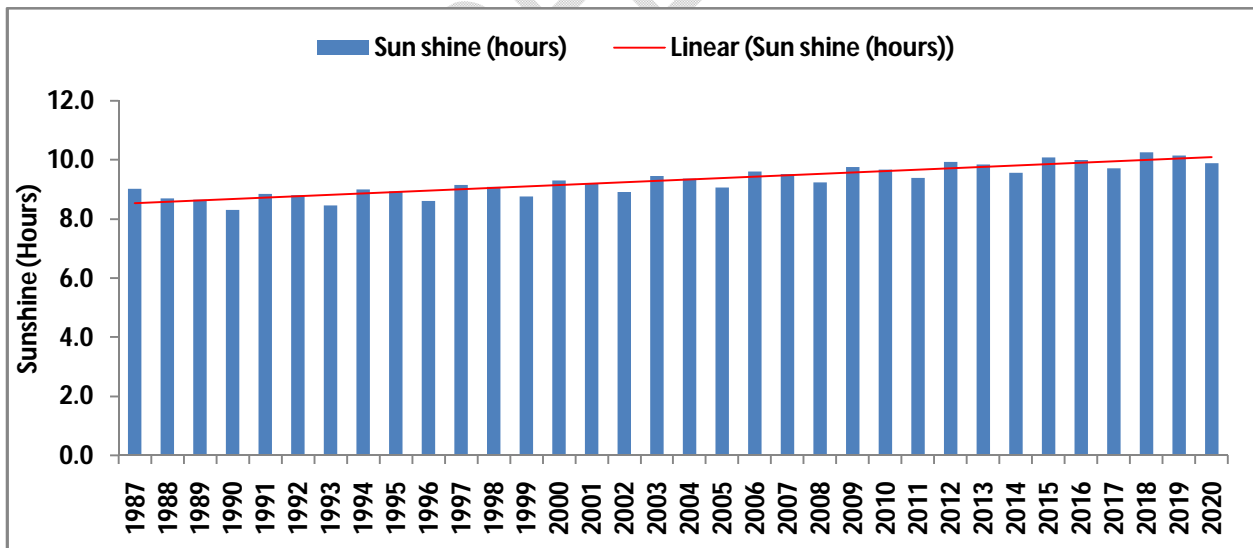


Figure 8: Sunshine hour's variation from 1987 to 2020

Figure 9 showing the decreasing trend in average annual humidity. With decrease in humidity level the crop ET increases. Since, low humidity increases the vapor pressure deficit (an indication of the dryness of the air) between the vegetative surface and air. Higher transpiration and evaporation will always need to occur to meet the evaporative demand of the air for

moisture. The surrounding air's moisture demand always dictates surface to evaporate moisture to meet that demand (Irmak, 2017).

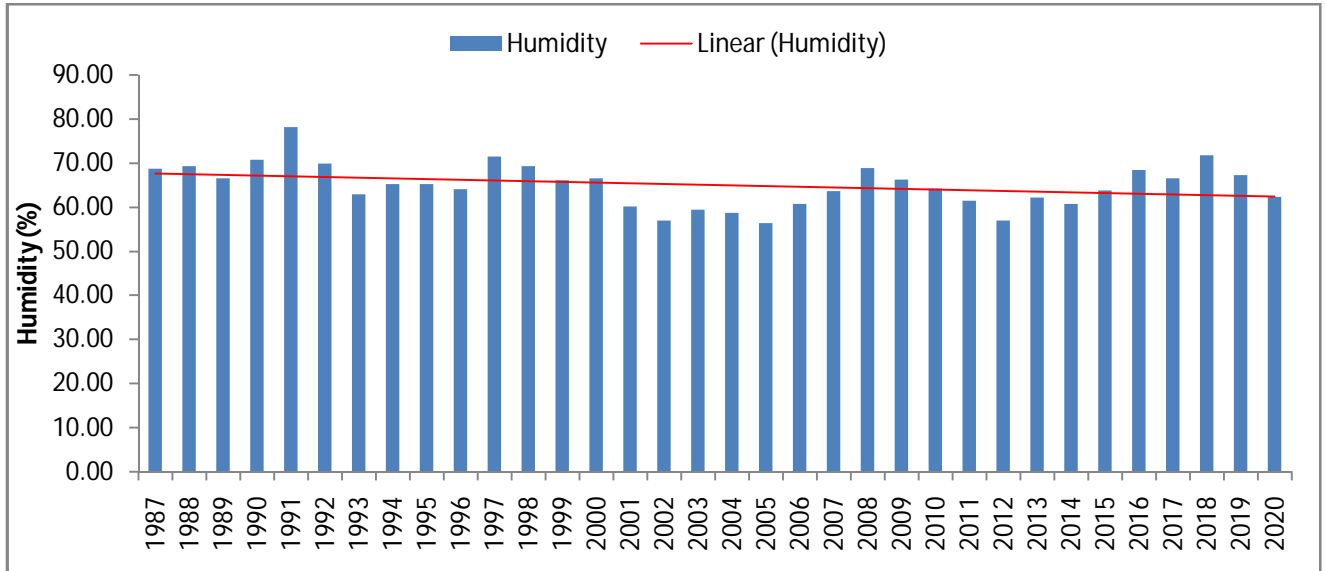


Figure 9: Humidity variation from 1987 to 2020

Figure 10 showing the decreasing trend in average annual  $ET_o$ . Mean  $ET_o$  has been decreased by 0.49 mm/day. This may be attributed to the mean daily wind speed which has been decreased by 1.20 knots/day. Irmak and Mutiibwa (2010) have reported that decrease in wind speed usually causes  $ET_o$  to decrease. In a study, Wang et al., (2010) found decrease in  $ET_o$  (during the years 1957 to 2005) at the rate of 40.9 mm/decade and trend analysis exhibited that the reduction in  $ET_o$  was mainly dominated by the significant decrease in wind speed with high sensitivity, to a less extent, by the decrease in net radiation. Although relative humidity is one of the most sensitive variables, but its effect on  $ET_o$  they found was negligible because of its temporal constancy. They found contribution of wind speed reduction to decreased  $ET_o$  has increased from 50 to 76.1%, but net radiation, by contrast, decreased from 50 to 23.9%.

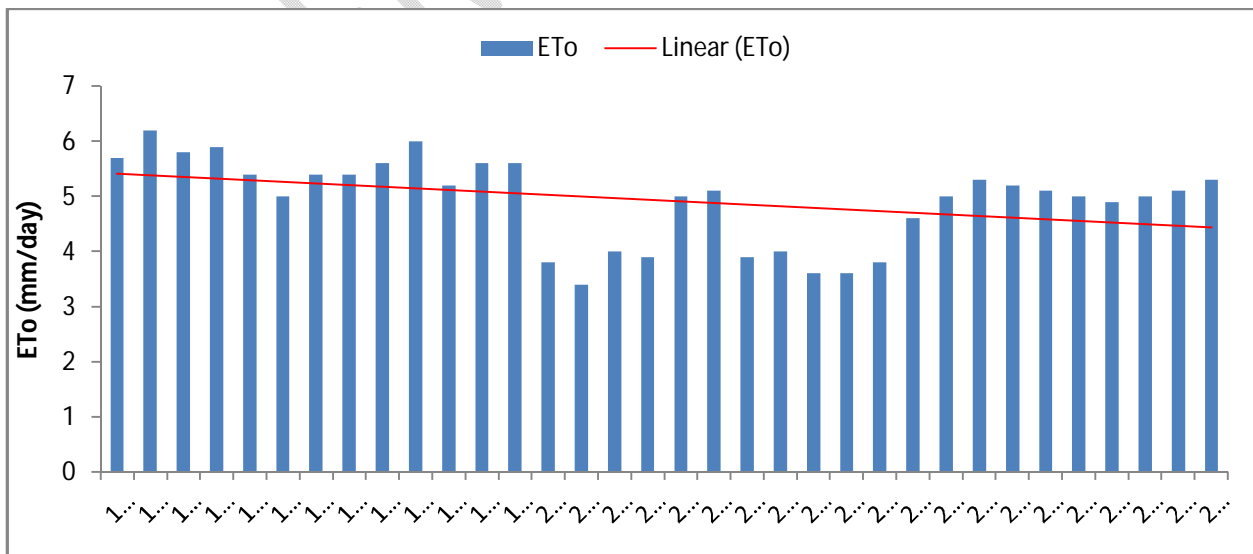


Figure 10:  $ET_o$  variation from 1987 to 2020

Figure 11 showing the decreasing trend in average evaporation rate. Evaporation rate during 1987-2003 was 6.88 mm/day which decreased to 6.26 mm/day during 2004-2020. Evaporation rate has been decreased by 0.62 mm/day. This may be attributed to the mean daily wind speed which has been decreased by 1.20 knots/day. Wang et al., (2010) found the similar trend. They found decrease in evaporation (during the years 1957 to 2005) at the rate of 17.7 mm/decade mainly because of significant decrease in wind speed and net radiation.

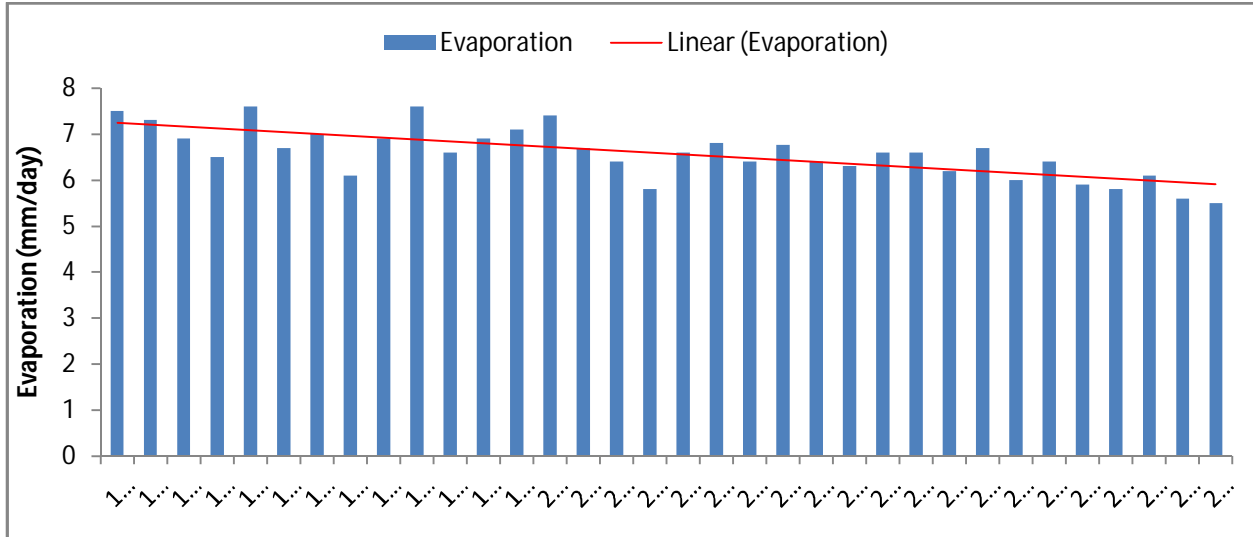


Figure 11: Evaporation rate variation from 1987 to 2020

### 3.2 Impact of climate change on ET and GWC to ET

Climate change has different impact patterns on crop ET. Wheat ET has increased in 2017-21 period at 1.50 m, 2.25 m and 2.75 m WTDs under both soil types (Table 2). The rise in ET may be attributed to the increase in maximum temperature and sun shine hours during the months of peak ET requirements (December – March) (Figure 12 and 13). The increasing temperature would have provided an opportunity to transpire more from the plant leaves and tissues. With an increase in temperature, the photosynthesis rate of wheat increases (Morison, 1987) that facilitates and regulates maximally the plant transpiration (Drake *et al.*, 1997). This will enhance the transpiration rate owing to that the crop ET increases (Peng *et al.*, 2004).

Table 2: Wheat ET during 1986-87 and 2017-21

WTD (m)	Wheat ET (mm)			
	Sultanpur soil		Miani soil	
	1986-87	2017-2021	1986-87	2017-2021
1.5	425d	510a	406e	470b
2.25	411e	464b	392g	430cd
2.75	390gh	431c	386h	401f
LSD = 2.4394				

Means with the same letters are not significantly different at P = 0.05

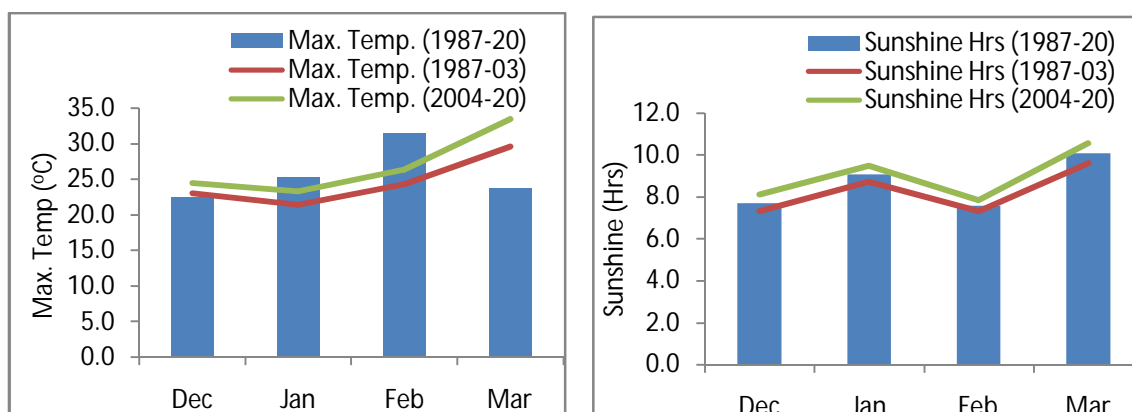


Figure 12: Max. Temperature during peak ET months Figure 13: Sunshine hours during peak ET months

Compared to 1986-87, ET has increased maximum during 2017-21 at shallow (1.5 m) WTD particularly under sultanpur soil type. This may be attributed to the (i) height of unsaturated zone which is relatively smaller under a shallow WTD than the deeper one. Hence, under shallow WTD, capillary rise tends to supply moisture in upward direction continuously offering high opportunity for evaporation and root water uptake from the soil layers. Moreover, rising temperature and sunshine hours has further increasing effect on evaporation from the soil surface particularly under a shallow WTD where capillary fringe remains closer to the soil surface, (ii) high water holding capacity of the sultanpur soil as 2-2.50 inch/ft and lowest of miani soil as 1.8-2.00 inch/ft (NRI, 2001), owing to that sultanpur soil holds higher amount of water. Thus, evaporation and transpiration losses in case of sultanpur soil will be higher than in Miani soil. The increase in temperature (0.45 °C), soil characteristic and shallowness of WTD are the factors towards maximum increase in ET at shallow WTDs. The changes and the net effect of climate change on the crop ET largely depends on the interaction between these factors.

Climate change has significantly reduced the GW contribution to wheat ET (Table 3). During the cropping period of 1986-87, it was 42-49%, 32-42% and 25-32% which have decreased to 27-29%, 12-17% and 6-8% during the recent cropping periods of 2017-21 at 1.50 m, 2.25 m and 2.75 m WTDs under both soil types. This might be because of (i) increase in rainfall during different growth stages of wheat might have reduced the capillary rise (Figure 14), and (ii) due to the climate change (rising temperature), cropping days has decreased by 8 days (during 1986-87 it was 125 days and during 2017-21 it was 117 days). GW contribution to ET for those days is not part of GW contribution during 2017-21. Therefore, it is lowest during 2017-21 as compared to 1986-87.

Table 3: GWC to Wheat ET during 1986-87 and 2017-21

WTD (m)	GWC to Wheat ET (mm)			
	Sultanpur soil		Miani soil	
	1987	2017-20	1987	2017-20
1.50	212a	149c	170b	127d
2.25	174b	77f	128d	50g
2.75	125d	34h	96e	23i
LSD = 2.3765				

Means with the same letters are not significantly different at P = 0.05

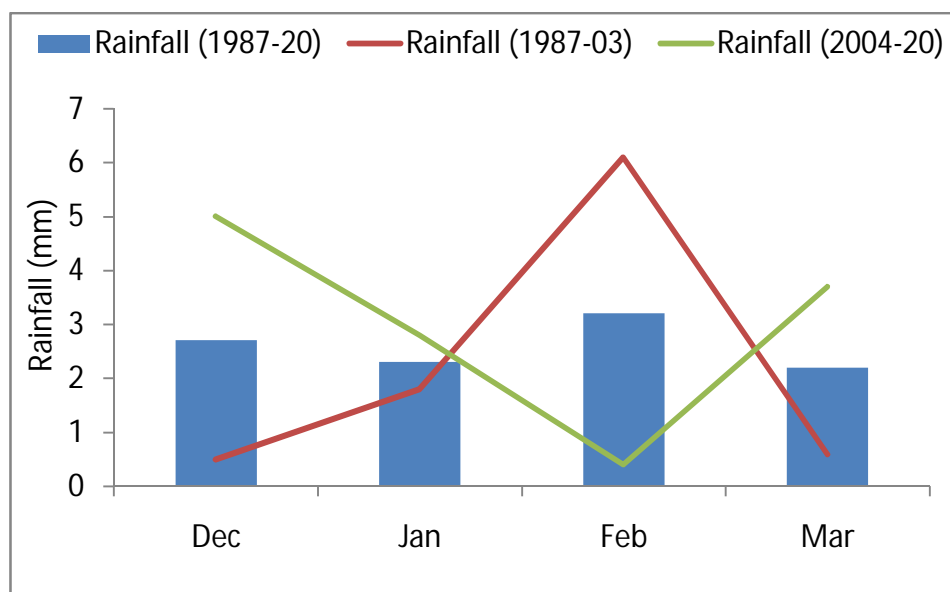


Figure 14: Rainfall during wheat peak ET months

Cotton ET has decreased in the recent cropping periods i.e. 2017-2020 at all WTDs under both soil types (Table 4). There are certain reasons behind decrease in cotton ET which are, (i) decrease in  $ET_0$  and wind speed during the months of peak ET requirements (June to September) (Figure 15 and 16), (ii) due to the climate change (rising temperature), cropping days has decreased by 21 days (during 1987 it was 173 days and during 2017-20 it was 152 days). The ET for those 21 days is not part of cotton ET determined during 2017-20. Hence, ET during 2017-20 is less than ET determined during 1987, (iii) GW contribution to crop ET is one of the main factors towards rise in cotton ET. Higher the groundwater contribution maximum would be the crop ET. Moreover, capillary rise takes place when the soil upper layers are driers. Due to the increase in rainfall during peak ET months (June – September), about 20%-25% of the cotton ET was fulfilled by rainfall and it replenished the soil to its field capacity level. Hence, capillary rise did not taken place, resultantly cotton ET was decreased during 2017-20 compared to that of 1987.

Table 4: Cotton ET during 1987 and 2017-20

WTD (m)	Cotton ET (mm)			
	Sultanpur soil		Miani soil	
	1987	2017-2020	1987	2017-2020
1.5	899a	739d	868b	695e
2.25	908a	668f	903a	626g
2.75	861b	631g	843c	585h
LSD = 7.0775				

Means with the same letters are not significantly different at  $P = 0.05$

Climate change has significantly reduced the GW contribution to cotton ET (Table 5). The contribution of GW towards meeting ET of cotton has significantly decreased during the recent cropping period (2017-20) as compared to the study conducted about 35 years ago (1987) (Table 5). During the cropping period of 1987, it was 46-49%, 43-47% and 34-38% which have decreased to 28-32%, 16-18% and 6-8% during the cropping years of 2017-20 at 1.50 m, 2.25 m and 2.75 m WTDs under both soil types. This decrease in GW contribution to cotton ET may possibly be because of, (i) decrease in  $ET_o$  and wind speed (Figure 15 and 16) during the peak ET months (June to September), (ii) due to the climate change (rising temperature), cropping days has decreased by 21 days (during 1987 it was 173 days and during 2017-20 it was 152 days). The GW contribution to ET for those 21 days (82 to 96 mm at 1.50 to 2.75 m WTDs) is not part of GW contribution to cotton ET determined during 2017-20. Hence, GW contribution during 2017-20 is less than determined during 1987, and (iii) increase in rainfall (Figure 17) during cotton peak ET months (Jun-Sep).

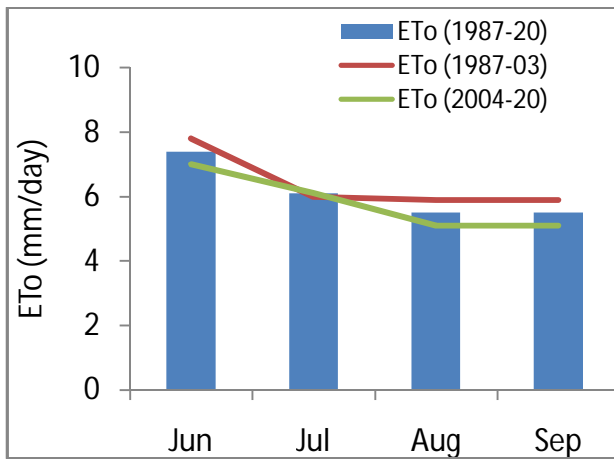


Figure 15:  $ET_o$  during peak ET months

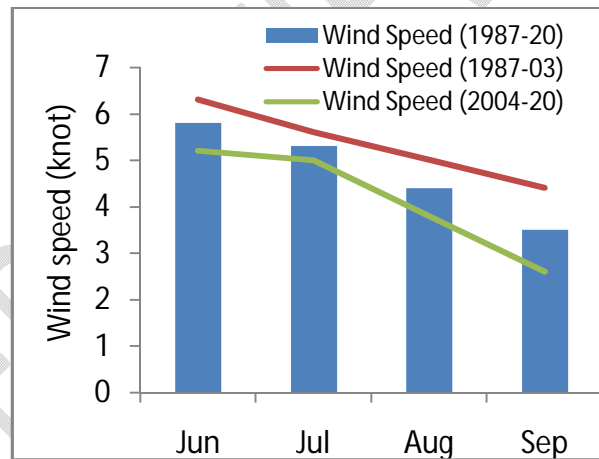


Figure 16. Wind speed during peak ET months

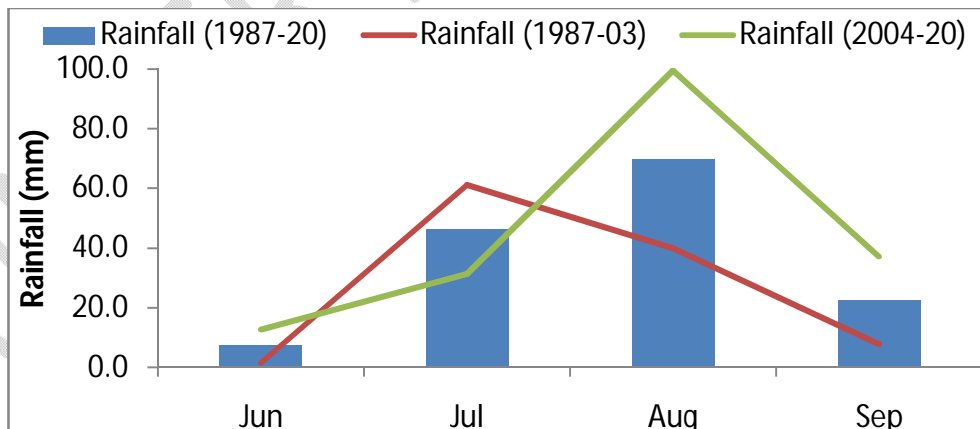


Figure 17: Rainfall during cotton peak ET (June - September)

Table 5: GWC to Cotton ET during 1987 and 2017-20

WTD	GWC to Cotton ET (mm)
-----	-----------------------

(m)	Sultanpur soil		Miani soil	
	1987	2017-2020	1987	2017-2020
1.5	442a	236e	398b	196f
2.25	433a	123g	389b	98h
2.75	329c	50i	287d	36i
LSD = 4.8835				

Means with the same letters are not significantly different at  $P = 0.05$

### 3.3 Impact of climate change on crop yield and WUE

Climate change had no negative impact on wheat yield (latest variety NIA-Sarang) rather high yield obtained during the recent cropping periods of 2017-21 compared to that of 1986-87 (Figure 18). This is because NIA-Sarang wheat variety has great potential against the heat stress compared to other varieties (Channa *et al.*, 2016). Wheat yield has increased 46-53% at 1.50 to 2.75 m WTDs under both soil types. Wheat yield is highest at shallow WTD particularly under sultanpur soil type. This may be attributed to the ET of the crop which was satisfied from two sources (i) moisture stored in the soil in response to the irrigation or rainfall and (ii) upward movement of water from capillary zone (GW contribution). Average wheat yield in Sindh is 3342 kg/ha about 11% higher than the Pakistan's (PBS, 2019). However, wheat yield during 2017-21 under varying WTDs and soil types is 26-37%, 35-44% and 26-36% higher than the average yield of Sindh, Pakistan and the worlds.

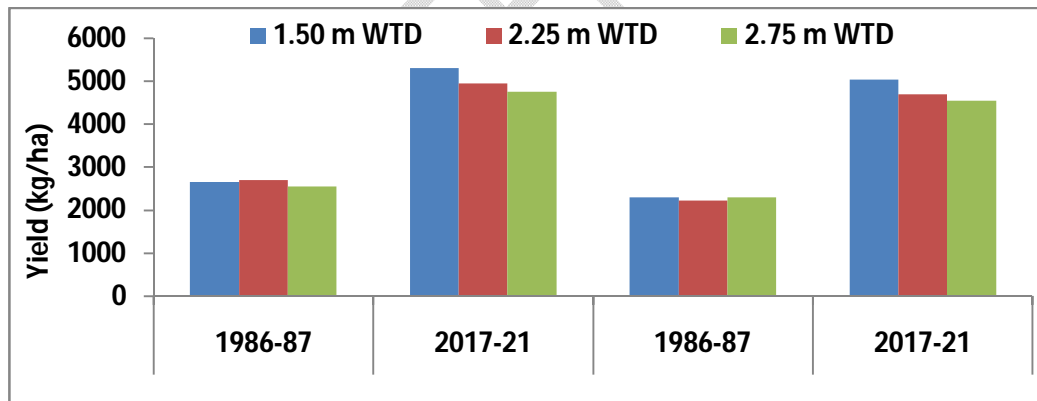


Figure 18: Wheat yield (1986-87 and 2017-21)

Wheat WUE is highest during 2017-21 as compared to 1986-87 (Figure 19). This may be attributed to the 46-53% higher yield obtained during 2017-21 as compared to 1986-87. The WUE is highest at 2.75 m WTD followed by 2.25 m and 1.50 m WTDs. For sultanpur and miani soil types, 4-5% WUE was higher at 2.75 m than that of 2.25 m and 1.50 m WTDs. Although, higher yield was obtained with shallow WTDs, but due to comparatively less ET, WUE was higher for deeper WTDs.

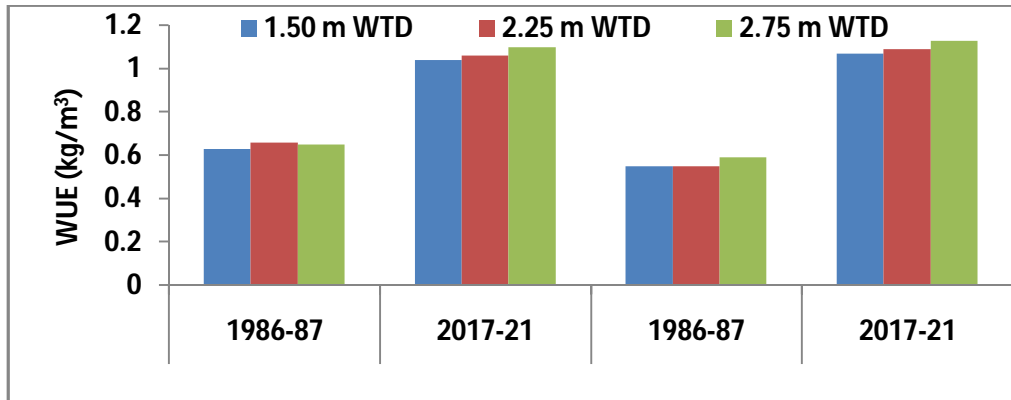


Figure 19: Wheat WUE (1986-87 and 2017-21)

Cotton yield during 1987 was highest as compared with the four years average cotton yield during 2017-20 (Figure 20). This may be attributed to the rainfall which severely reduced cotton yield during the cropping periods of 2019 and 2020. The rainfall more than 25 mm particularly during the lint formation stage severely reduces the cotton yield. However, during the cropping period of 2018, there was meager rainfall (3-11 mm), owing to that highest yield of cotton was obtained as 5793-6129 kg/ha, 5210-5584 kg/ha and 4670-4832 kg/ha at 1.50, 2.25 and 2.75 m WTDs under both soil types. During the cropping years of 2019 and 2020, occurrence of rainfall lost the yield of cotton as 2940-3786 kg/ha and 1863-2086 kg/ha yield was obtained at WTDs of 1.50 to 2.75 m under both soil type. Hence, it has become imperative to grow the cotton by 1st week of April, so that the 1<sup>st</sup> highest yield bearing picking of cotton could be done before the onset of monsoon (July-September).

Cotton yield was highest at shallow WTD particularly under sultanpur soil type. The yield was highest at WTD of 1.50 m followed by 2.25 m and lowest yield obtained at 2.75 m WTD under both soil types. The higher yield at 1.50 m WTD may be attributed to the crop ET which was satisfied from both source (i) moisture stored in the soil in response to the irrigation or rainfall and (ii) upward movement of water from capillary zone (GW contribution). Average cotton yield in Sindh is 1049 kg/ha about 28% higher than the Pakistan's (PBS, 2019). However, cotton yield during 2017-20 under different WTDs and soil types was found about 70-74%, 78-81% and 61-66% higher than the average yield of Sindh, Pakistan and worlds.

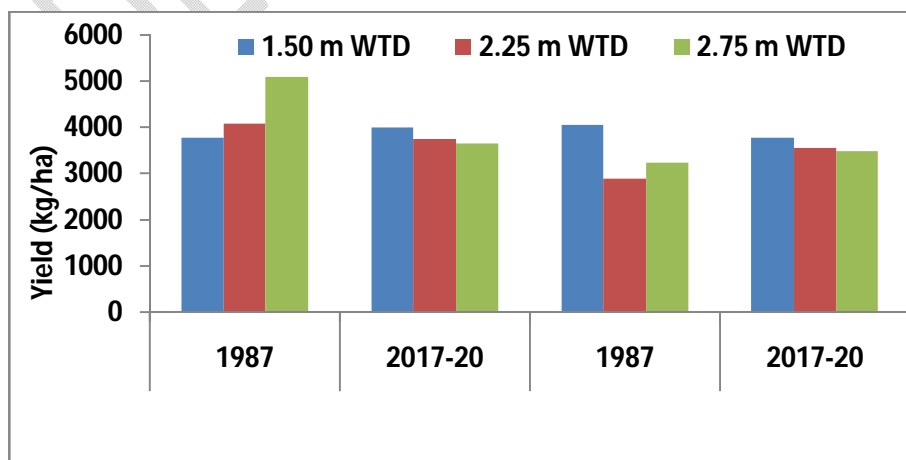


Figure 20: Cotton yield during 1987 and 2017-20

Cotton WUE during 2017-20 is higher than in 1987 period (Figure 21). This is because of comparatively less ET. The WUE was highest at 2.75 m followed by 2.25 m and 1.50 m WTDs. The WUE was 3-7% and 5-10% highest under sultanpur and miani soil types at 2.75 m over 2.25 m and 1.50 m WTDs. Although, higher yield was obtained at shallow WTDs, but due to comparatively less ET, WUE was higher under deeper WTDs.

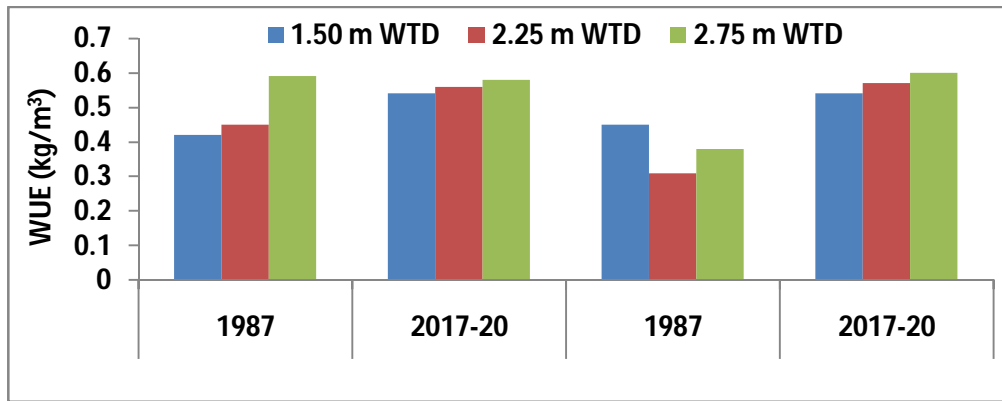


Figure 21: Cotton WUE during 1987 and 2017-20

#### 4. CONCLUSION

With an increase in maximum temperature coupled with sun shine hours, wheat ET will be increased and will decrease the cropping cycle upto 8 days. The increased wheat water demand due to climate change can put tremendous pressure on existing overstressed water resources. The decrease in sunshine hours,  $ET_0$  and wind speed during the months of peak ET are the major factors that suppressing cotton ET. GW contribution to crop ET is the main factor towards higher cotton ET. Increasing rainfall pattern will reduce the reliance on surface irrigation and will decrease the GW contribution towards meeting cotton ET (6% - 32%). Rising temperature has shortened the cotton cropping cycle by 21 days. The study demonstrates that irrigation allocation should be increased for wheat and decreased for cotton particularly in the shallow water-table areas under sultanpur soil type where water-table remains at 1.50 m – 2.25 m depths. Moreover, cotton crop should be cultivated by the 1<sup>st</sup> week of April, so that highest yield of cotton could be harvested before onset of monsoon.

## References

- Ali, L., Ali, M. and Mohyuddin Q. 2003. Assessment of optimum nitrogen requirement and economics of cotton crop for seed yield. *Int. J. Agri. Biol.*, 5(4), 493-495.
- Ali, M.H and Adham A. K. M. 2007. Impact of climate change on crop water demand and its implication on water resources planning. *J. Agrometeorol.*, 9(1): 20-25
- Allen, R. G., Pereira, L. S., Raes, D. and Smith M. 1998. Crop evapotranspiration - Guidelines for computing crop water requirements - FAO Irrigation and Drainage Paper 56. Rome, Italy: FAO.
- Arshad, A., M. A. Raza., Y. Zhang., L. Zhang., X. Wang., M. Ahmed and M. Habib-ur-Rehman (2021). Impact of Climate Warming on Cotton Growth and Yields in China and Pakistan: A Regional Perspective. *Agriculture*, 11(2): 97.
- Ashraf M, Rao MI, Salam HA, Bhatti AZ (2018). Determining water requirements of major crops in the lower Indus basin of Pakistan using drainage type lysimeters. *Pak J Agri Sci* 55(4):973-978.
- Awan, H., Awan, I., Mansoor, M., Khan, E. A. and Khan M. A. 2011. Effect of sowing time and plant spacing on fiber quality and seed cotton yield. *Sarhad J. Agric.* 27(3): 411-413.
- Bouras, E., Jarlan, L., Khabba, S., Er-Raki, S., Dezetter, A., Sghir, F. and Trambly Y. 2019. Assessing the impact of global climate changes on irrigated wheat yields and water requirements in a semi-arid environment of Morocco. *Sci Rep* 9, 19142.
- Channa, A. W., Sial, M. A., Bux, H. and Sahito J.G.M. 2016. Resistance to leaf rust in commercial wheat varieties of Sindh and their agronomic performance under different sowing regimes. *Pak. J. Phytopathol.*, Vol. 28 (01) 2016.61-69.
- Chaudhry, Q. U. Z. 2017. Climate change profile of Pakistan, Asian Development Bank 6 ADB Avenue, Mandaluyong City, 1550 Metro Manila, Philippines. <https://www.adb.org/sites/default/files/publication/357876/climate-change-profile-pakistan.pdf>.
- Doorenbos, J. and Pruitt W.O. 1975. Guidelines for predicting crop water requirements. *Irrigation and Drainage*. Paper No. 24, FAO, Rome, Italy, pp. 168.
- Drake, B. G., González-Meler, M.A. and Long S. P. 1997. More efficient plants: A consequence of rising atmospheric CO<sub>2</sub>? *Annu. Rev. Plant Physiol. Plant Mol. Biol.* 48, 609-639.
- Frederick, K. D. and David C. Major. 1997. Climate change and water resources. *Climate Change*, 37(1): 7 - 23.

GoP (2015). Land Utilization Statistics, Bureau of Statistics, Government of Pakistan, Islamabad.

Gul, N., Babar, M.M., Sarki, A., Shaikh, I.A. and Mangrio M.M. 2018. Assessing the effect of different water table depths on water use, yield and water productivity of okra crop. *Mehran University Research Journal of Engineering and Technology.*, 37(1): 197-208.

Herwaarden, A. F., Farquhar-van, G.D., Angus, J.F., Richards, R.A. and Howe G.N. 1998. 'Haying-off', the negative grain yield response of dryland wheat to nitrogen fertiliser. I. Biomass, grain yield, and water use. *Aust. J. Agric. Res.* **49**, 1067 (1998).

Hordofa, A.T., O.T. Leta., T. Alamirew and A.D. Chukalla (2022). Response of Winter Wheat Production to Climate Change in Ziway Lake Basin. *Sustainability* 2022, 14, 13666. <https://doi.org/10.3390/su142013666>.

Intergovernmental Panel on Climate Change (IPCC). 2014. Climate change 2014: synthesis report. In: Core Writing Team, Pachauri, R.K., Meyer, L.A. (Eds.), Contributions of Working Groups I, II, and III to the Fifth Assessment Report of the Intergovernmental Panel on Climate Change. IPCC, Geneva, Switzerland (151p).

Irmak, S. 2017. Evapotranspiration Basics and Estimating Actual Crop Evapotranspiration from Reference Evapotranspiration and Crop-Specific Coefficients. G1994 · Index: Crops, Irrigation Engineering, pp1-9.

Irmak, S. and Mutiibwa D. 2010. On the dynamics of canopy resistance: Generalized-linear estimation and its relationships with primary micrometeorological variables. *Water Resources Research* 46:1–20, W08526, doi: 10.1029/2009WR008484.

Kiani, A and T. Iqbal (2018). Climate Change Impact on Wheat Yield in Pakistan (An Application of ARDL Approach). *Nust Journal of Social Sciences and Humanities.*, 4(2): 240-262.

Kreft, S., Eckstein, D., Junghans, L., Kerestan, C. and Hagen U. 2013. Global climate risk index 2014. Who suffers most from extreme weather events, 1?

Morison, J.I.L. 1987. Intercellular CO<sub>2</sub> concentration and stomatal response to CO<sub>2</sub>. In *Stomatal function* (eds E. Zeiger., G.D. Farquhar and I.R. Cowan), pp. 229-252. Stanford University Press, Stanford.

Morton, J. 2007. The impact of climate change on smallholder and subsistence agriculture. *Proc.Natl. Acad. Sci. USA* 104, 50.

Nosetto MD, Jobbagy EG, Jackson RB, Sznajder GA (2009). The reciprocal influence of crops and shallow groundwater in sandy landscapes of the Inland Pampas. *Field Crop Research* 113(2): 138-148.

NRI. 2001. **Soil and Water Relationships**. <https://www.noble.org/news/publications/ag-news-and-views/2001/september/soil-and-water-relationships/> (accessed on May 21, 2021).

PBS. 2019. Pakistan Statistical Year Book, Government of Pakistan, Ministry of Planning Development and Special Initiatives, Pakistan Bureau of Statistics [https://www.pbs.gov.pk/sites/default/files//other/Pakistan\\_Statistical\\_yearbook\\_2019.pdf](https://www.pbs.gov.pk/sites/default/files//other/Pakistan_Statistical_yearbook_2019.pdf).

Peng, S., Huang, J., Sheehy, J. E., Laza, R. C., Visperas, R. M., Zhong, X., Centeno, G. S., Khush G. S. and Cassman K. G. 2004. Rice yields decline with higher night temperature from global warming. *Proc. Natl. Acad. Sci.*, 101 (27) 9971-9975.

Phullan, N. K., Memon, M., Shah, J. A., Memon, M. Y., Sial, T. A., Talpur, N. A., and Khushk G. M. 2017. Effect of organic manure and mineral fertilizers on wheat growth and soil properties. *Journal of Basic & Applied Sciences*, 13: 559-565.

Rajabi, [M., N. Jalalkamali](#) and [M. Naghizadeh](#) (2022). Climate change impact on the estimation of reference evapotranspiration, water requirement, and irrigation requirement in irrigated areas (a case study: Bardsir plain). *Journal of Water and Climate Change*, 13 (4): 1951–1965.

Rashid, M., Z. Husnain, U. Shakoor and M.I. Husnain (2020). Impact of climate change on cotton production in Pakistan: An ARDL bound testing approach. *Sarhad Journal of Agriculture*, 36(1): 333-341.

Raza, A and M. Ahmad (2015). Analysing the Impact of Climate Change on Cotton Productivity in Punjab and Sindh, Pakistan. Pakistan Institute of Development Economics Islamabad, Climate Change Working Papers No. 9.

Solomon, S., Qin, D., Manning, M., Chen, Z., Marquis, M., Averyt, K.B., Tignor, M. and Miller H.L. 2007. Climate Change, The Physical Science Basis Contributions of Working Group I to the Fourth Assessment Report of the Intergovernmental Panel on Climate Change. Cambridge University Press, Cambridge.

Tadross, M and Wolski P. 2010. Climate Change Modeling for the Pangani Basin to Support Integrated Water Management Planning Process (Final Report). Climate Systems Analysis Group, SA.

Wang, P., Yamanaka, T. and Qiu, G.Y. 2012. Causes of decreased reference evapotranspiration and pan evaporation in the Jinghe River catchment, northern China. *Environmentalist* 32, 1–10.