

# Postnatal Effects of the Ethanol on the Encephalon Mass and Neocortex Architecture in Wistar Rat Offspring Submitted to Acute Prenatal Injection [E<sub>12</sub>] and *in vitro* Ethanol Effects on Wistar Rat and Human Erythrocytes

## ABSTRACT

**Aims:** To verify the ethanol effects of the acute injections in pregnant Wistar rats (E<sub>12</sub>) in the offspring in P<sub>8</sub>. Additionally, measures of the brain and corporal masses and the stability of erythrocytes was performed in rats and humans.

**Study design:** Histological analysis and spectrophotometer were used to count neural cells and osmotic fragility in erythrocytes.

**Place and Duration of Study:** The immunohistochemistry study was performed, partially, at Federal University of Uberlândia, and at the University of Toyama-Japan was performed the experiments on brain, body masses and the stability of erythrocyte membranes in humans from 2012 to 2014.

**Methodology:** Eighteen pregnant female rats (180-230g) were housed in cages at 22 ± 0.4°C on a 12 h light/dark cycle, with free access to food and water. On the 11<sup>th</sup> day of pregnancy (E<sub>12</sub>), 12 rats received three intraperitoneal (i.p.) injections of a 20% ethanol solution (3 g of ethanol/kg of body weight), at 8 h intervals.

**Results:** The number of neural cells was lower in rats treated with ethanol than to controls to each lobe and total count in all lobes (P = 0.001). Significant alterations of neocortical tissue in ethanol-treated were observed, as the decrease of brain mass (P = 0.05) in linear regression. The stability of erythrocyte membranes was verified with D<sub>50</sub> equal to 0.46 g·dL<sup>-1</sup> (± 0.05).

**Conclusion:** According to this work, the ethanol injection in the rats shows marked brain tissue destruction and decrease of brain mass, relative to the control, and ethanol's effects on erythrocytes indicated that membrane destruction could be one of the causes of brain cell disruption in neural migration.

**Keywords:** Neocortex; drug effects; ethanol; erythrocytes, biostatistics

## 1. INTRODUCTION

The chronic effects of ethanol on the brain in development have been associated, *inter alia*, to damages in cortical migration and generation of neurons [1-3] causing heterotopy and ectopia [4], neuronal depopulation and neuroapoptosis [5,6] as well as disruption in callosal projection neurons [7], glial alterations [8,9], disruption on the second messengers and protein phosphorylation [10], alterations of the genetic expression [11-13], alterations of the growth factors [14] and neurotoxicity of homocysteine [15] as well as alterations in *substantia nigra* [16], in the neural crest [17], in the hypothalamic-pituitary-adrenal axis [18], in the

Comment [1]: Replace with: on

Comment [2]: Replace with: were

Comment [3]: Replace with: and a spectrophotometer

Comment [4]: Replace with: study was partially performed at the Federal University of Uberlândia, and at the University of Toyama-Japan, the experiments on the brain, body masses, and stability of erythrocyte membranes in humans were performed

Comment [5]: Remove

Comment [6]: Remove

Comment [7]: Replace with: hours

Comment [8]: Replace with: than in controls in each lobe and in the total count in all lobes (P = .001). Significant alterations of neocortical tissue in ethanol-treated rats were observed as a decrease in brain mass (P = .05) in linear regression. The stability of erythrocyte membranes was verified with a D<sub>50</sub> equal to 0.46 g·dL<sup>-1</sup>

Comment [9]: Replace with: showed marked brain tissue destruction and a decrease in brain

cholinergic development [19,20] along with decreases in Purkinje cell density [21] and hippocampus neurons [22,23].

Different regions of the encephalon are not uniformly vulnerable to ethanol and other drug effects during development [17,24], mainly because of the absence or inefficiency of a protective fetal blood-brain barrier [25,26].

Furthermore, the deleterious effects of ethanol on the organism in general and specifically on the development of the encephalon are scarcely understood [27,28] and the *modus of action* behind the ethanol effects on biological structures is uncertain, putatively because ethanol effects are ubiquitous on cells constituent as well as receptors, growth cones, nucleic acids, membranes what could affect the migration routes, synaptogenesis and the structure of tissues and organs as cited above.

Most studies about the effects of ethanol on the neural system are focused on chronic effects, and just a few study acute effects from a single day of exposure to this drug on prenatal development [29]. The acute assays can be made on a specific day in the gestation while prioritizing crucial periods as gastrulation, migration of cells, for instance, neural and glial migration or synaptogenesis period, hypothetically destroying the basis of the cortical structure and consequently decreasing the cerebral mass [30].

In this way, ethanol effects in the birth of neurons in the neocortex that occurs from gestational day 11 to 13 in rats [31,32] could be studied, because that is a crucial time to the construction of neocortex layers and corresponds to first trimester-equivalent gestational days in humans [33,34] for the cerebral mass. Thus, the first purpose of this work was to acutely inject ethanol (single day) in the development neocortex when the neuronal migration is starting (neuron birthday) and to measure the evolution of the brain mass in some days after birth, using rats as a model.

On the other hand, ethanol is a known chaotropic that acts by denaturing proteins [35,36] and modifying the membrane bilayer [28]. It has been verified that chronic ethanol exposure in rats changes membrane fluidity [37] and increases the osmotic fragility of erythrocytes [38], producing hemolysis [39,40].

*In vitro* effects on erythrocytes indicate that ethanol destabilizes the membranes [28,41,42] generating pores [43] and modifying erythrocyte shapes [42]. Nevertheless, membrane stability is amply dependent on the environment that cells live in [44] and the entropy of the aqueous solution-lipids system [45].

Indeed, before the ethanol acts on internal cellular structures, it must pass the extracellular environment and penetrate the cells by going through the plasma membrane and disrupting it [41,42]. Thus, it is reasonable to think, hypothetically, that the membrane rupture should generate apoptosis and migration errors in the cells because the membrane stability is essential to maintain cell integrity.

Water and saline solutions containing ethanol were tested separately to verify the direction and under what physiological conditions the effect of these solutions on plasma membranes would occur by the ethanol concentration injected in the rats in this experiment. To reach these objectives, the main model used was the erythrocytes because of their particular constitution, i.e. a cytoplasm without nucleus and organelles surrounded by a plasma membrane, such that the plasma membrane is most of the membrane in this structure. Rat and human erythrocytes were used.

**Comment [10]:** Replace with: The chronic effects of ethanol on the development of the brain has been associated, *inter alia*, to damages in the following: cortical migration and generation of neurons [1-3], heterotopy and ectopia [4], neuronal depopulation and neuroapoptosis [5,6], disruption in callosal projection neurons [7], glial alterations [8,9], disruption on the second messengers and protein phosphorylation [10], alterations of the genetic expression and growth factors [11-14], and neurotoxicity of homocysteine [15], as well as alterations in the *substantia nigra* [16], the neural crest [17], the hypothalamic-pituitary-adrenal axis [18], the cholinergic development [19,20] along with decreases in Purkinje cell density [21] and hippocampus neurons [22,23].

**Comment [11]:** Replace with: *operandi*

**Comment [12]:** Replace with: cell constituents as well as receptors, growth cones, nucleic acids, and membranes, which could affect migration routes, synaptogenesis, and

**Comment [13]:** Replace with: crucial periods such as gastrulation, migration of cells, for instance, neural and glial migration, or synaptogenesis,

**Comment [14]:** Replace with: effects on the birth of neurons in the neocortex that occur

**Comment [15]:** Replace with: for

**Comment [16]:** Replace with: developing

**Comment [17]:** Replace with: generates pores [43], and modifies erythrocyte

**Comment [18]:** Remove

**Comment [19]:** Replace with: pass through the

**Comment [20]:** Replace with: because membrane stability is essential to maintaining cell

**Comment [21]:** Replace with: under

**Comment [22]:** Replace with: into

In summary, the effects of the ethanol on the neocortex histology and the brain mass were verified. Then, the acute injection of ethanol (single day) on the offspring's neurons ( $E_{12}$ ) in Wistar rats was studied and effects in offspring were observed on the eighth postnatal day ( $P_8$ ). Additionally, measures of the brain and corporal masses were made after birth until the 50<sup>th</sup> postnatal day to verify the effect of ethanol on brain mass. Then, *in vitro* tests were performed to verify the stability of erythrocyte membranes under aqueous and saline ethanol solutions. Finally, the results and other data from the literature were used to understand the general effect of ethanol on brain tissues.

Comment [23]: Replace with: studied, and effects on the offspring

## 2. MATERIAL AND METHODS

### 2.1. Immunohistochemistry and encephalon/body masses

Female Wistar rats (180–230 g) were housed from 3:00 pm to 6:00 am the next day with male rats. The presence of a vaginal plug and sperm in the vagina confirmed successful mating and indicated the first day of gestation ( $E_0$ ). Eighteen pregnant female rats were housed in cages at  $22 \pm 0.4^\circ\text{C}$  on a 12 h light/dark cycle, with free access to food and water. On the 11<sup>th</sup> day of pregnancy ( $E_{12}$ ), 12 rats received three intraperitoneal (i.p.) injections of a 20% ethanol solution (3 g of ethanol/kg of body weight), at 8 h intervals. Ethanol was administered intraperitoneally because this route ensured that all rats received an equal volume and amount of drug and there was almost 100% absorption. In addition, at  $E_{12}$ , six control pregnant rats received saline injections of 0.9% at the same intervals as the ethanol-treated rats. Proliferating cells were labelled as described elsewhere [32]. All rats received a single i.p. injection of BrdU (5 mg/mL in 0.9% NaCl, containing 70 mM NaOH) at a dose of 60 mg/kg 2 h after the last injection of ethanol or saline solution.

Comment [24]: Replace with: 3:00 p.m. to 6:00 a.m.

Comment [25]: Replace with: hours

Comment [26]: Remove

Comment [27]: Replace with: weight) at 8 hours intervals

Comment [28]: Insert a comma.

On the eighth day of postnatal life ( $P_8$ ), 18 litters were chosen randomly and anesthetized with sodium pentobarbital ( $50 \text{ mg}\cdot\text{kg}^{-1}$ , i.p.) and perfused with saline followed by 70% ethanol. The brains were removed and processed as described elsewhere (Miller 1993). Briefly, the brains were embedded in paraffin, sectioned sagittally (7  $\mu\text{m}$  thick sections) and mounted on gelatine-coated slides. The sections were deparaffinized, hydrated in a graded ethanol series and treated with 1 molar (M) NaOH followed by 1 M sodium borate buffer (20 min each), before washing with phosphate buffer. After blocking non-specific sites with serum, the sections were incubated for 2 h with a monoclonal anti-BrdU antibody (diluted 1:500; Sigma, St. Louis, MO, USA) followed by incubation for 1 h with a goat anti-rat secondary antibody (diluted 1:200; Vector, Burlingame, CA, USA) and then treated with an avidin-biotin complex (Vector) and incubated with 3,3'-diaminobenzidine (Sigma). Sections were cover slipped with Entellan. Some sections were not incubated with monoclonal antibodies to verify the possible background. Finally, the slides were contrasted with safranin.

Comment [29]: Insert a comma.

Comment [30]: Insert a comma.

Comment [31]: Insert a comma.

The presence of anomalous neuron clusters in the neocortex areas was indicative of heterotopia, and the presence of unusual neurons in the neocortex layers was indicative of ectopia.

The lobes were identified via anatomical region and type of neurons for each layer according to Caviness Jr [46]. The number of cells immunohistochemically labelled in cortices was obtained from a trinocular microscope Olympus BX40-F4, coupled to an Oly-200 (Olympus American) camera and IBM computer via an Olympus U-SPT coupling accessory. The images were processed with the use of the HL image ++97 software. Six areas of  $15,000 \mu\text{m}^2$  from each lobe for each encephalon were captured and analyzed.

Comment [32]: Replace with: layer, according to Caviness Jr.

Comment [33]: Insert a comma.

Comment [34]: Replace with: were processed with the HL Image

The same **proceedings** used in the immunohistochemistry assays were done with eight female rats prior to mating, ethanol and BrdU injections. The encephalon and body masses of offspring were obtained on postnatal days 1, 8, 17, 26, 33, 45 and 50 after the perfusion (as **the perfusion** described before). Between four **to** six weight measures were obtained from each litter, depending on the number of individuals born to the nest. An effort was made to cut the head between the atlas vertebrae and the occipital using a fine scissor **and** the encephalon was removed carefully. All materials were weighed on an analytical balance (Mettler Toledo mod. AG245).

**Comment [35]:** Replace with: procedures

**Comment [36]:** Insert a comma.

**Comment [37]:** Remove

**Comment [38]:** Replace with: and

**Comment [39]:** Insert a comma

## 2.2 Osmotic fragility

Blood samples (3 mL) were collected, with a syringe containing heparin, from the antecubital vein of male human volunteers (14) after overnight (8–12 h) fasting and from 2 adult Wistar rats (198 and 230g) via the left ventricle.

The stability of erythrocytes was tested in solutions with different compositions: 1) ethanol from 0.1 to 20 g·dL<sup>-1</sup> in 0.9% NaCl, 2) NaCl from 0.1 to 0.9 g·dL<sup>-1</sup> and 3) ethanol from 0 to 19.8 g·dL<sup>-1</sup> in deionized **water** to humans and ethanol from 3.9 to 74.1 g·L<sup>-1</sup> in 0.9% NaCl. The general conditions of the assays were adapted from the literature [47]. To each unit of a duplicate set of Eppendorf flasks, 1 mL of the testing solution and 10 µL of blood were added. After homogenization and incubation at 37°C, the flasks were centrifuged for 10 minutes at 2000 rpm, and the supernatant fractions were analyzed by visible spectrophotometry at 540 nm with a Micronal B442 spectrophotometer.

**Comment [40]:** Replace with: water for humans, and 4) ethanol

Aliquots of 10 µL of blood were added to concentrations of 1.56, 3.9, 7.8, **11.7** and 5.6 mg·dL<sup>-1</sup> ethanol (equivalent to 2, 5, 10, 15 and 20% of ethanol) solutions prepared in 0.9% NaCl. After homogenization and incubation at 37°C for 10 minutes, the mixtures were added to histological slides and labelled with May-Grünwald-Giemsa stain and Sudan black. The slides were analyzed in a trinocular microscope Olympus BX40-F4, coupled to an Oly-200 (Olympus American) camera and IBM computer via an Olympus U-SPT coupling accessory. The images were processed **with the use of the HL image ++97 software.**

**Comment [41]:** Replace with: 11.7, and 5.6 mg·dL<sup>-1</sup> ethanol (equivalent to 2, 5, 10, 15, and 20% of ethanol) in solutions

**Comment [42]:** Insert a comma.

**Comment [43]:** Replace with: with the HL Image

## 2.3 Statistics and ethics

For the cell count, the normality **test of data** was performed first. Data submitted and approved by Kolmogorov-Smirnov/Liliefors and Shapiro-Wilk W tests were considered normal. **After the acceptance, the normality was applied to a T-test to comparing means between the control and treated groups to each lobe and afterwards to both complete groups. Differences were considered significant at p = 0.001.**

**Comment [44]:** Replace with: test of the data

**Data from encephalon and body weight were submitted to curve fit to verify the type of regression that had a better fit for the data. Logarithmic and linear regressions were used in the regressions. Logarithmic regression was used to compare the brain and body weight for both treated and control rats, and linear regressions were used to compare control and treated brain and body weights. The comparison between the relationship between brain and body weight for both treated and control groups was performed using linear regression. For all cases, the ANOVA was calculated for p = 0.05.**

**Comment [45]:** Replace with: After acceptance, normality was applied to a T-test to compare means between the control and treated groups for each lobe and afterwards for both complete groups. Differences were considered significant at P= .001.

**Comment [46]:** Replace with: Data from the encephalon and body weight were submitted to curve fitting to

**Comment [47]:** Replace with: weights

**Comment [48]:** Replace with: compare the control

**Comment [49]:** Replace with: for both the treated and control groups was performed using linear regression. In all cases, the ANOVA was calculated with P= .05.

For both experiments' cell counts and encephalon-body weights, the statistical analyses and graphical plots were performed via the StatPlus program (AnalystSoft Inc. v.7.3.3).

Data obtained for ethanol/saline concentrations and only saline concentration were adjusted to a sigmoidal curve according to the Boltzmann equation and the  $D_{50}$  was obtained by 50% of erythrocyte lysis.

Comment [50]: Replace with: concentrations

Comment [51]: Insert a comma.

Comment [52]: Remove

A previous project about the immunohistochemistry and erythrocytes histology in rats were approved by Federal University of Tocantins as the experimental protocols described here [ethics committee from Federal University of Tocantins, number 23101.003220/2013-85] and all procedures were performed according with a Brazilian College of Animal Experimentation. The immunohistochemistry study and were performed, partially, at Federal University of Uberlândia, and at the University of Toyama-Japan was performed the experiments on brain and body masses and the stability of erythrocyte membranes in humans.

Comment [53]: Replace with: rats was approved by the Federal

Comment [54]: Replace with: from the Federal

Comment [55]: Replace with: according to a Brazilian

Comment [56]: Replace with: study was partially performed at the Federal University of Uberlândia, and at the University of Toyama-Japan, experiments were performed on

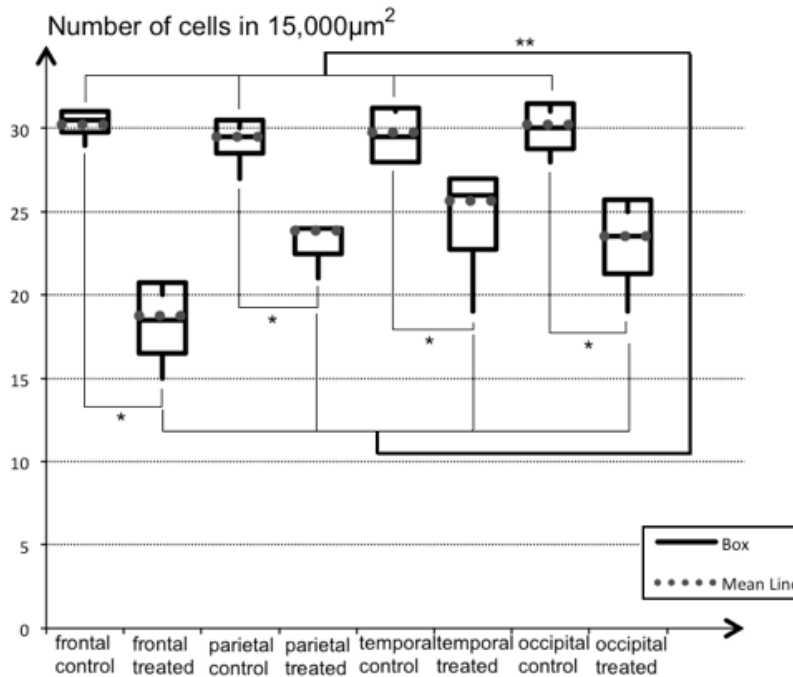
### 3. RESULTS AND DISCUSSION

#### 3.1 Immunohistochemistry of acute ethanol effects on the neocortex

In quantitative terms, the number of cells was lower in rats treated with ethanol than to controls to each lobe and total count in all lobes (frontal, parietal, temporal and occipital), considering absolute numeric data and after statistical analysis of means comparison with a t-test to  $P = 0.001$  (Fig 1).

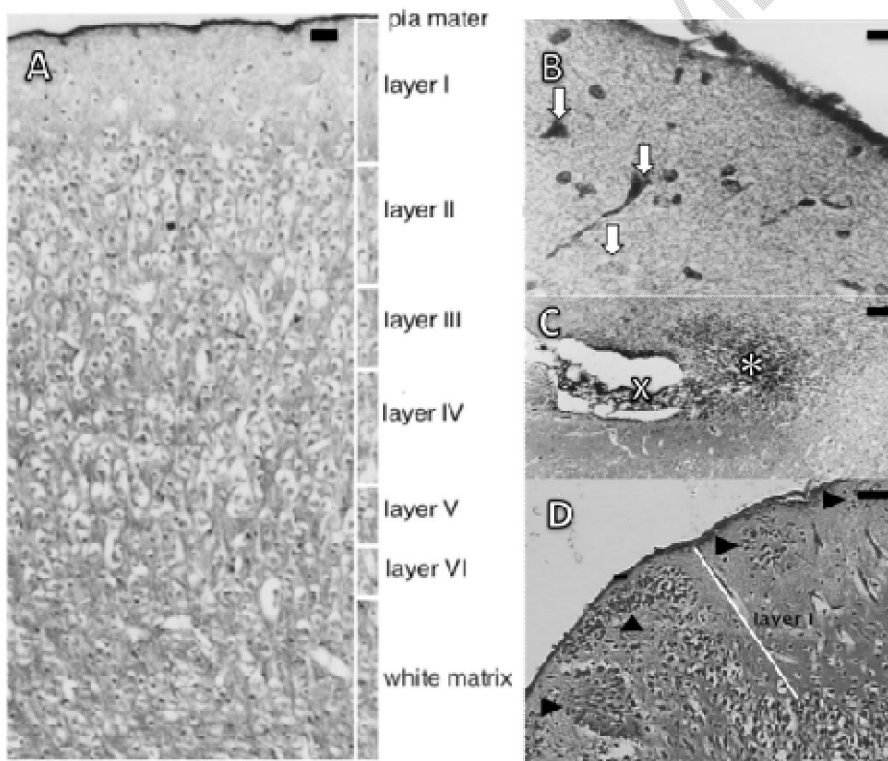
Comment [57]: Replace with: than in controls for each lobe and the total count in all lobes (frontal, parietal, temporal, and occipital)

Comment [58]: Replace with:  $P= .001$



**Fig 1. Box graphic of the number of cells in the neocortex (area: 15,000  $\mu\text{m}^2$ ). The asterisk (\*) indicates a significant difference between control and treated groups for each lobe, and two asterisks (\*\*) indicate a significant difference between all controls and treatments by comparing means (T-test) to  $P = 0.001$ .**

In qualitative terms, significant alterations of neocortical tissue in ethanol-treated rats relative to control ones were observed. The characteristic pyramidal neurons were used as a marker to define brain layers in Wistar rats (Fig 2A). The BrdU stained nuclei; however, many times, the content of the nucleus may leak during the proceedings, and the cytoplasm shape is visualized in black or shades of grey. On the other hand, the safranin stains permit a pale visualization of the cytoplasm.



**Fig 2. Photomicrographs of the neocortex (prefrontal lobe) of Wistar rats with cells labelled with BrDU. A) photomicrography of the histology of layers in the parietal lobe of a control (Bar = 200  $\mu\text{m}$ ); B) photomicrography of layers I and II of a frontal lobe of a treated animal indicating (white arrows) the unusual large cells (ectopia) with pyramidal shape in layer I (Bar = 20  $\mu\text{m}$ ); C) photomicrograph of the tangential route from the ventricular zone to the olfactory bulb generating a heterotopic group of cells**

(\*) under fissure between the frontal lobe and olfactory bulb (X) (Bar = 240  $\mu$ m); D) photomicrograph of superficial layers of the temporal lobe of a treated animal indicating (arrowheads) anomalous group of cells (heterotopy) in layer I close to the pia mater (Bar = 200  $\mu$ m).

The main alterations observed in ethanol-treated animals were ectopic neurons with pyramidal shapes found in layer I (molecular layer) (Fig 2B) and heterotopic groups into the molecular (Figs 2C, 2D, 3A) and external granular (layer II) layers (Fig 3C). Cell depopulation in deep layers, mainly V and VI (pyramidal internal and fusiform layers, respectively) was observed qualitatively (Fig 3D) and quantitatively (Fig 1). Apoptotic cells characterized by pyknotic nuclei were observed in heterotopic clusters (Fig 3A) and a putative radial pathway to the pia mater was found by the observation of a line of nuclei (Fig 3B).

Comment [59]: Replace with: Figs. 2C, 2D, and 3A

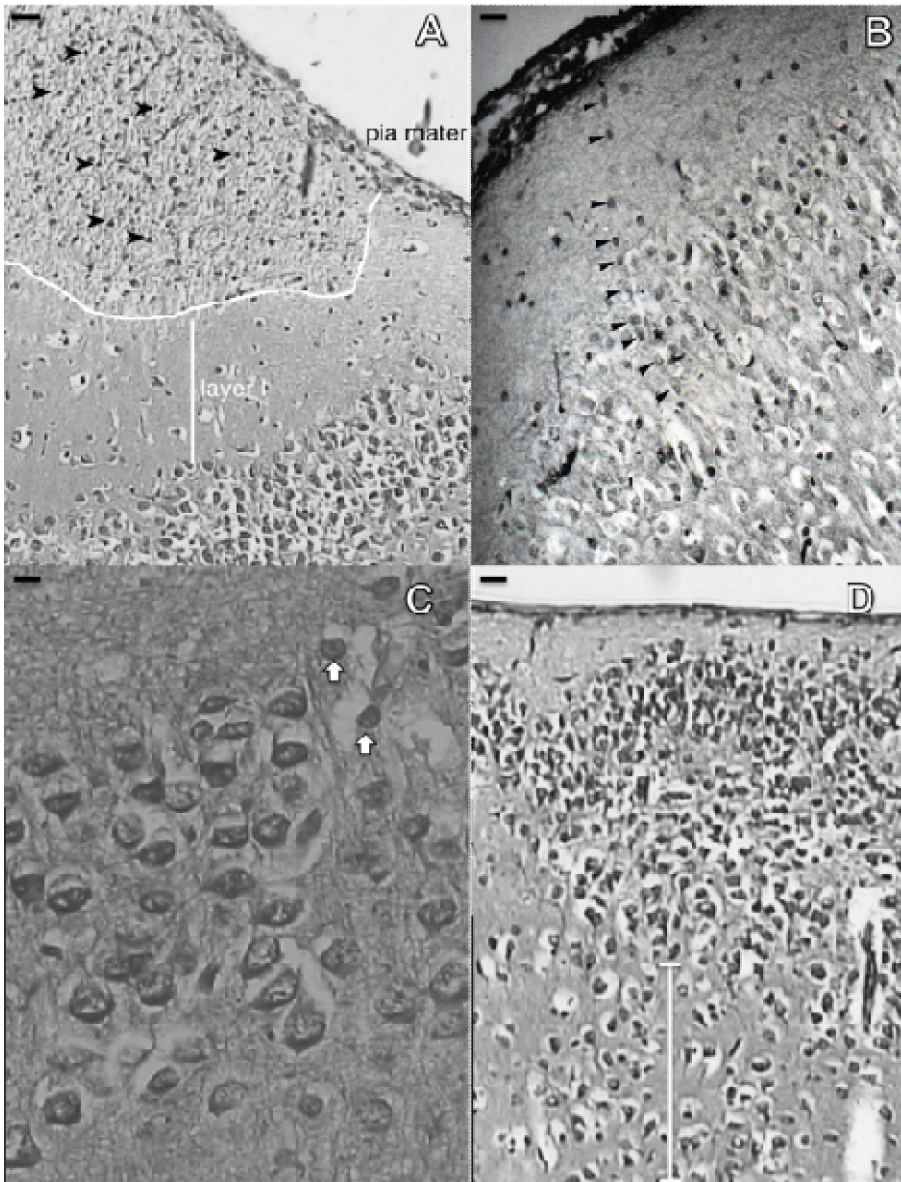
Comment [60]: Insert a comma.

Comment [61]: Replace with: Fig. 3D

Comment [62]: Replace with: Fig. 3A

Comment [63]: Replace with: Fig. 3B

UNDER PEER REVIEW



**Fig 3.** Photomicrographs of the neocortex of treated Wistar rats with cells labelled with BrDU. A) photomicrography of the histology of superficial layers in the parietal lobe with a large heterotopic group of cells presenting pyknotic nuclei (arrowheads) (Bar = 90  $\mu$ m); B) photomicrography of layers of a frontal indicating (arrowheads) a group of cells in line seeming to follow a pathway to the pia mater (Bar = 70  $\mu$ m); C)

photomicrograph of superficial layers I, II and part of III of the parietal lobes indicating an anomalous group of cells (heterotopy) in layer II; the normal nuclei expected to this layer are shown by head arrows (Bar = 25  $\mu\text{m}$ ); 4) photomicrography of layers of an occipital lobe showing (white line) a few populations of cells in deep layers (V and VI) relative to other more superficial ones (Bar = 50  $\mu\text{m}$ ).

### 3.2 Acute ethanol effects on encephalon mass

The relation of the encephalon weight to body weight demonstrated a statistical difference according to the ANOVA from the 1st day forward until the 50th post-natal day to  $p < 0.05$  (Fig 4). The statistical logarithmic regression was calculated to compare the brain and body weight for both treated ( $R^2 = 0.95504$ ) and control ( $R^2 = 0.9407$ ) rats. The linear regressions were calculated to compare control and treated brain weights ( $R^2 = 0.7166$ ) and body weights ( $R^2 = 0.8212$ ), as well as the comparison between the relation between brain and body weights for both treated and control groups ( $R^2 = 0.0052$ ), at  $P = 0.05$  (Fig 4).

The ANOVA shows the acceptance of  $H_0$  for the comparisons between the brain and body weight for both treated and control groups as well as the control and treated brain and body weights; however, for the comparison between the relation between brain and body weight for both treated and control groups, the  $H_0$  was rejected at  $P = 0.05$ .

Comment [64]: Replace with: day of  $P = .05$  (Fig. 4)

Comment [65]: Remove

Comment [66]: Replace with:  $P = .05$  (Fig. 4)

Comment [67]: Insert a comma.

Comment [68]: Replace with: groups,  $H_0$  was rejected at  $P = .05$ .

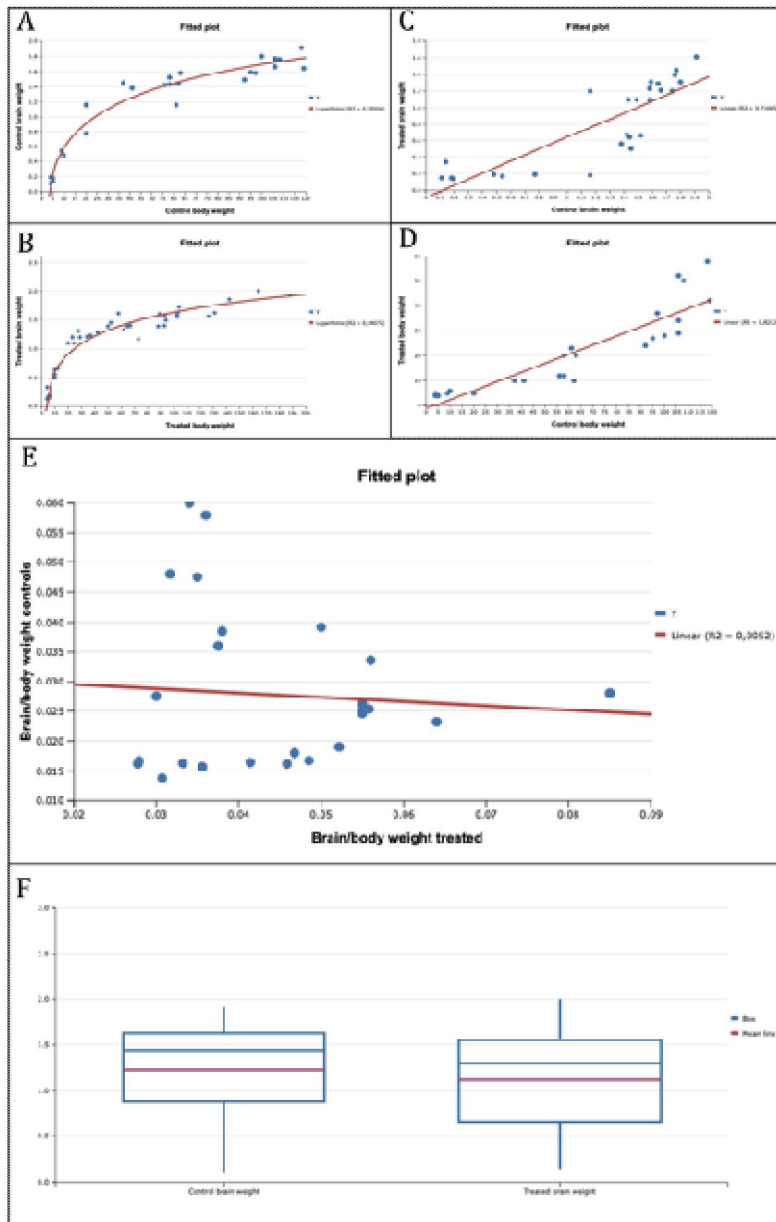
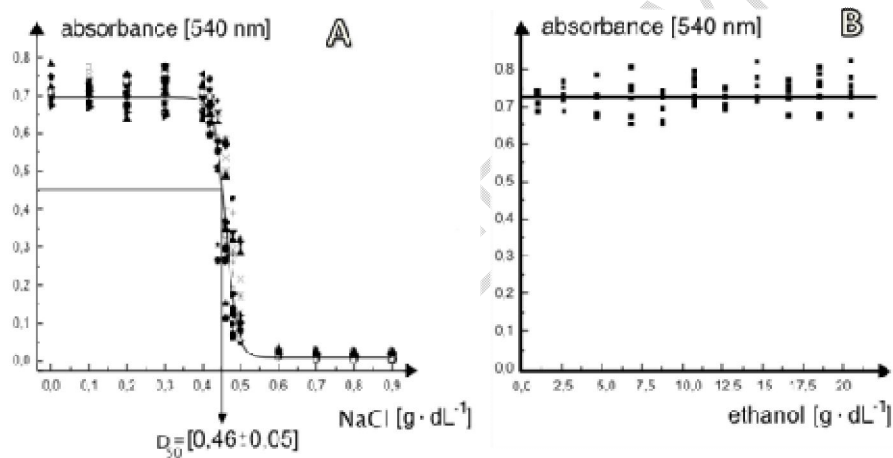


Fig 4. Graphs showing the acute ethanol effects on encephalon mass. A) showing the logarithmic regression to compare the brain and body weight for both treated ( $R^2 = 0.95504$ ) and B) control ( $R^2 = 0.9407$ ) rats; C) showing the linear regressions to compare control and treated brains weight ( $R^2 = 0.7166$ ) and D) body weights ( $R^2 =$

0.8212); E) also the comparison between the relation between brain and body weights for both treated and control groups was performed using linear regression ( $R^2 = 0.0052$ ) in all cases, to  $P=0.05$ ; F) the box graph indicating the brain mass difference between the control and treated rats.

### 3.3 Ethanol effects on osmotic fragility (membrane stability) of human erythrocytes

The stability of erythrocyte membranes was verified under different concentrations of NaCl from 0.1 to 0.9 g·dL<sup>-1</sup> (Fig5A) with D50 equal to 0.46 g·dL<sup>-1</sup> ( $\pm 0.05$ ). It was performed by two motifs, at least, 1) to verify the device accuracy and 2) to represent an osmotic parameter to study the ethanol osmotic effects on membranes of erythrocytes. Crescent ethanol concentrations from 0 to 19.8 g·dL<sup>-1</sup> were used to verify the membrane stability in erythrocytes (Fig 5B), demonstrating membrane rupture for all analyzed concentrations.



**Fig 5.** Data from the crescent concentration of NaCl and ethanol on human erythrocyte membranes. A) Data from the crescent concentration of NaCl on human erythrocyte membranes; observe that the membrane stability of erythrocytes starts at D50 ( $0.46 \pm 0.05$  g·dL<sup>-1</sup>); B) data from the crescent concentration of ethanol on erythrocyte membrane stability; observe that for these concentrations membrane stability for erythrocytes is not present.

The membrane stability of Wistar rats and human erythrocytes was tested under the effect of association among crescent ethanol concentrations (0.1 to 20.0 g·dL<sup>-1</sup> in humans and 3.9 to 74.1 g·dL<sup>-1</sup> in Wistar rats) diluted in a constant concentration of NaCl (0.9%) with a D50 equal to  $11.05 \pm 0.25$  g·dL<sup>-1</sup> for humans (Fig 6A) and a D50 equal to  $11.31 \pm 0.04$  g·dL<sup>-1</sup> for Wistar rats (not shown graphically). According to these data, the 0.9% NaCl in solution with ethanol stabilizes erythrocyte membranes until 11.05 g·dL<sup>-1</sup> for humans and 11.31 g·dL<sup>-1</sup> for Wistar rats. The average concentration of the ethanol in the blood of Wistar rats for the

Comment [69]: Replae with: Fig. 5A

Comment [70]: Replace with: performed for at least two reasons: 1)

Comment [71]: Replace with: effects on the membranes

Comment [72]: Replace with: Fig. 5B

histological study was approximately  $24.4 \text{ g}\cdot\text{dL}^{-1}$ ; therefore, into the destruction of erythrocytes by ethanol in rats, in considering the rats' average mass of 205 mg and the blood volume of approximately 13 mL [48].

Comment [73]: Remove

Comment [74]: Replace with: ethanol in rats is considered

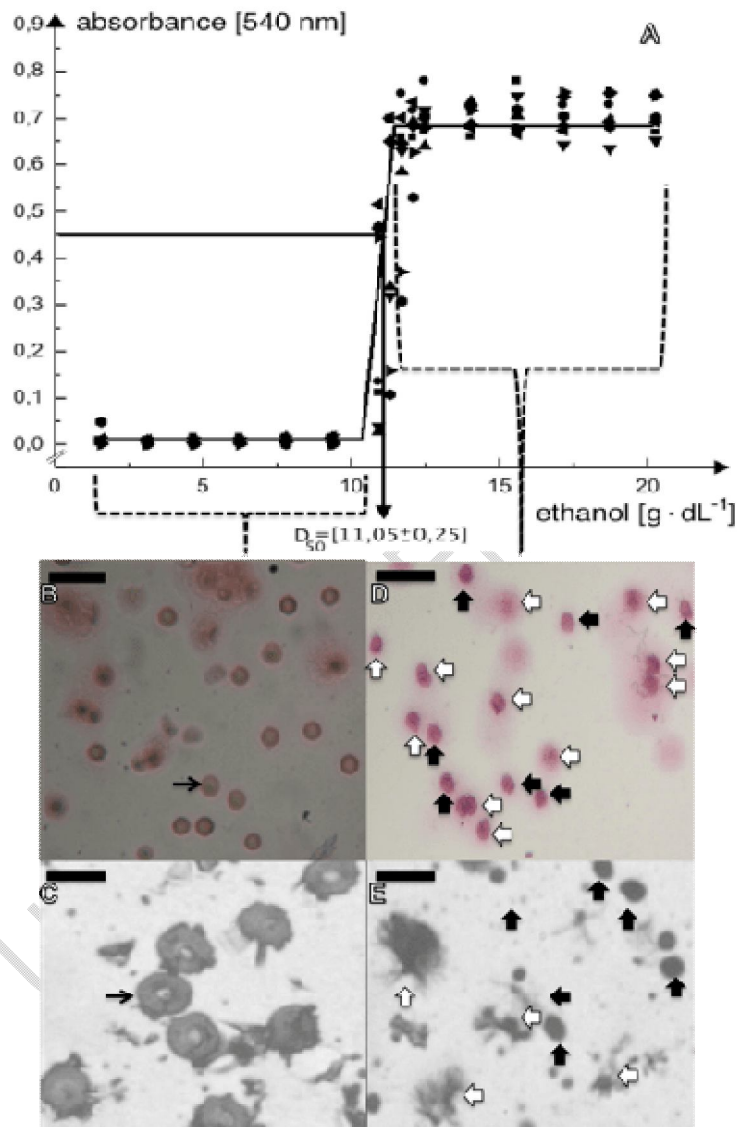


Fig 6. Ethanol effects on membrane stability of human erythrocytes. A) Plotted data of the crescent ethanol concentration effect on the erythrocyte's membrane keeping a constant concentration of the NaCl (0.9%) generating a sigmoidal curve adjusted to

the Boltzmann equation. The pre-transition region must contain most of the erythrocytes intact and the post-transition region must contain most of the destroyed erythrocytes. The calculated D50 (a point that represents 50% of erythrocytes intact) was  $11.05 \pm 0.25 \text{ g}\cdot\text{dL}^{-1}$ . B) Photomicrography of erythrocytes labelled by May-Grünwald-Giemsa obtained from samples that generate pre-transition curve (2% or  $1.56 \text{ g}\cdot\text{dL}^{-1}$ ) indicating the intact or normal shape of erythrocytes (the thin black arrow indicates an example of intact erythrocyte) (Bar =  $35 \mu\text{m}$ ). C) Photomicrography of erythrocytes labelled by Sudan black obtained from samples that generate pre-transition curve (2% or  $1.56 \text{ g}\cdot\text{dL}^{-1}$ ) indicating the intact or normal shape of erythrocytes in detail (the thin black arrow indicates an example of intact erythrocyte) (Bar =  $10 \mu\text{m}$ ). D) Photomicrography of erythrocytes labelled by May-Grünwald-Giemsa obtained from samples that generate post-transition curve (20% or  $15.6 \text{ g}\cdot\text{dL}^{-1}$ ) indicating small (black arrows) and destroyed (white arrows) erythrocytes (Bar =  $38 \mu\text{m}$ ). E) Photomicrography of in detail erythrocytes labelled by Sudan black obtained from samples that generate post-transition curve (20% or  $15.6 \text{ g}\cdot\text{dL}^{-1}$ ) indicating small (black arrows) and destroyed (white arrows) erythrocytes (Bar =  $10 \mu\text{m}$ ).

To verify the shape of the erythrocytes, histological assays were performed using May-Grünwald-Giemsa (Figs 6B, 6D) and Sudan black (Figs 6C, 6E) stains. Most erythrocytes shown in Fig 6B and with more detail in Fig 6C at a concentration of 2% ethanol ( $1.56 \text{ g}\cdot\text{dL}^{-1}$ ) presented intact membranes. Meanwhile, at a concentration higher than  $11.05 \text{ g}\cdot\text{dL}^{-1}$ , specifically 20% ethanol ( $15.6 \text{ g}\cdot\text{dL}^{-1}$ ) in Fig 6D and with more detail in Fig 6E, the erythrocyte membranes ruptured and/or the erythrocytes presented small sizes in comparison with the erythrocytes in Figs 6B and 6C.

## 4. DISCUSSION

### 4.1 Immunohistochemistry of acute ethanol effects on the neocortex and loss of the cerebral mass

In the development neocortex, post-mitotic neurons migrate from ventricular pseudostratified epithelium from days E<sub>11</sub> to E<sub>13</sub> [32] to generate, in order, the deepest to superficial layers in the adult neocortex [31,32,47]. This migration phenomenon obeys spatial and temporal patterns dependent on the formation and differentiation of the radial glia stimulated via chemical signals [49,50] for which molecular mechanisms are scarcely known [51-53].

The horizontal and vertical layers of organization in the adult neocortex are essential to its normal function and histological/molecular alterations during the development can affect the learning, attention, behavior, motor abilities [11,54] and memory [55,56] in animals and humans.

Chronic ethanol effects are associated with the desynchronization of cortical development and consequently the establishment of neuronal circuits generating a neocortex reorganization characterized by heterotopic groups of neurons [7] as well as destabilization of the matrix, molecules and other components in glia [53] and neurons [58,59], including processes such as gene expressions [11,60] and apoptosis [53,61-63].

General and more complete studies about acute effects of ethanol on the brain in development are necessary, considering molecular and genic aspects; indeed, most of the few acute studies are focused on histological aspects [64-67].

The acute studies indicated similar effects in the neocortex of Wistar rats in relation those verified to chronic ones, mainly in the presence of heterotopic groups of cells and depopulation in deep layers [66] and apoptosis in primate brains [67]. In rats, however,

Comment [75]: Replace with: (Figs. 6B, 6D) and Sudan black (Figs. 6C, 6E) stains. Most erythrocytes shown in Fig. 6B and with more detail in Fig. 6C

Comment [76]: Replace with: Fig. 6D

Comment [77]: Replace with: Fig. 6E

Comment [78]: Replace with: Figs. 6B and 6C

Comment [79]: Replace with: developing

Comment [80]: Replace with: signals

Comment [81]: Add a comma.

Comment [82]: Replace with: alterations during development can affect learning,

Comment [83]: Add a comma.

Comment [84]: Add a comma.

Comment [85]: Replace with: expression

Comment [86]: Replace with: about the acute

Comment [87]: Replace with: rats in relation to those verified in chronic

episodic prenatal exposure to ethanol in macaques has recently been shown to affect neurogenesis [68].

The literature refers mainly to chronic ethanol treatment problems, with some exceptions, as in the studies of the lobes for acute effects of ethanol specifically in P<sub>8</sub> with pregnant rats exposed in E<sub>12</sub> [65-67].

These causes of the brain disorders could be caused by several factors, such as disorganization of the cytoskeleton [49,69], problems in the expression of molecular clues (GGF, RF60, laminin, proteoglycans) or even some metabolic alterations, generating heterotopia, which is one of the most important derangements of the migration in the neural system [70-74].

The presence of evident heterotopic groups forming cell mass of a nodular type, determined by chronic exposure to ethanol [72], was also verified in this work as the deviation of the migratory route of neurons, i.e. putatively because the cells lost the ability to locate in the correct space-time place, perhaps they did not obtain the necessary connections to avoid apoptosis.

The neuroblast, when it leaves the germinal lamina to start its migration, has already specified its type, location and shape [50] and ethanol could disrupt these organizations. Indeed, in this work, the presence of ectopic neurons was observed in all rats acutely treated with/exposed to ethanol.

When neurons lose chemical contact with glial fibers, they continue migrating following the radial pathway until the *pia mater* where they undergo apoptosis [74,75]. This certainly justifies the neuronal depopulation mainly in the deep layers observed in animals treated with ethanol (Fig 4). In this sense, putatively, the ethanol inhibits the chemical relation between glia and neuroblasts necessary for correct neuron localization in the correct cortex layer.

As ethanol is chaotropic, it can affect the chemical environment of the cell matrix or the receptors and disrupt cellular components, in addition promoting changes in some or several of the basic activities of cells such as gene expression [60,76]

Molecular, cellular and histological changes in the neural system in initial development may affect general functions such as learning, inhibition, attention, regular behavior and motor skills [54,77,78] in the adult brain, and ethanol promotes these kinds of disturbances both in chronic and acute exposure, as shown in this work in the last case.

Accordingly, histophysiology modifications from ethanol administration may be responsible for problems such as memory loss reported in adults who had fetal alcohol syndrome [29,56,79]; however, this kind of analysis were not performed here.

Indeed, our data, i.e. the effects of the acute exposure to ethanol, are in agreement with reports of chronic effects studies [4,7], including migration problems in the cortex, with the layers having their natural order reversed and neuronal depopulation in the deep cortical layer, inter alia.

Hypothetically, the deep neuronal depopulation can be justified by the fact that the cells that form these layers are the first to initiate the migration [48,50,57,74] and, therefore, were subjected to a higher concentration of ethanol on the twelfth day of intrauterine life when the neurons started their migrations.

Another explanation is linked to horizontal or Cajal-Retzius cells that are responsible for the way the direction and stimulation of neuronal migration guides the astrocytes fibers, until their anchorage in the *pia mater* [50]. Therefore, the disorganization of the structure of the cytoskeleton of those cells by ethanol's chaotropic effects [53] could alter, at least secondarily, the time of fiber formations or fibre competence and, consequently, compromise neuron migration.

In summary, most works in the literature report the chronic effects of ethanol with few studies about the acute effects on specific days of embryonic or fetal development [27]. However, this work shows the severity of acute ethanol intoxication at the beginning of neuronal migration in rats, around the twelfth day of rat intrauterine life.

Comment [88]: Replace with: exposed to E<sub>12</sub> [65-67].

Comment [89]: Replace with: causes of brain

Comment [90]: Add a comma.

Comment [91]: Remove

Comment [92]: Add a comma.

Comment [93]: Add a comma.

Comment [94]: Replace with: Fig. 4

Comment [95]: Replace with: relationship

Comment [96]: Replace with: addition to promoting

Comment [97]: Add a comma.

Comment [98]: Add a comma.

Comment [99]: Replace with: histophysiological

Comment [100]: Replace with: was

Comment [101]: Replace with: of acute

Comment [102]: Add a comma.

Comment [103]: Replace with: guide the astrocyte

Comment [104]: Replace with: formation

Comment [105]: Add a comma.

It seems that the earlier the biological structure of the tissue is affected, the larger the consequences are [29], since the complex structures derived from the movement of cells during the development and differentiation into many cell subtypes depend directly on the initial basic structure of the tissue or organ, mainly the matrix integrity.

As the chronic studies about the ethanol effects are performed in rats [9,48,75,80], and the consequences are projected for humans, the same might be done here, i.e. the acute effects of the ethanol on the cortex are valid for humans, since the toxic concentrations of ethanol in rats and humans are equivalent, and the neuronal densities existing between different regions of the same brain and between brains of different species are also equal for all mammals.

## 4.2 Brain mass alterations

Neural apoptosis is a normal way for cerebral depopulation after birth in animals [51,81]. The measures of the brain mass diminish across time; however, the corporal mass increases simultaneously [82]. Thus, the relative measure of brain mass/body mass was performed to verify the ethanol effects on the brain mass, because when the numbers of neurons decrease, the brain mass must also decrease. However, the brain mass is not only dependent on neurons, the glia can divide and substitute for the dead neurons [83].

The chronic studies about ethanol effects, including in the FAS, indicates a cerebral mass decrease [30] relative to controls; however, this was not verified here except for the relation brain/body mass for both control and treated groups with linear regression, with  $R^2$  indicating no correlation and ANOVA indicating the  $H_0$  rejection. Some correlation was expected for this last case and a deeper study in trying to fit the curve for other parameters as logarithmic, exponential, square, or cubic regressions also indicate a null correlation. The expected regression for other parameters indicated a good precision in the data obtention, i.e., the body and brain growth for both control and treated groups. Thus, some alterations seem to occur with a decrease of the brain mass of the treated according to the box graph (Fig 4), following the information from the FAS, but weakly.

## 4.3 Disruption of the erythrocyte membrane by ethanol

The literature cites the disruption of the cytoskeleton as well as DNA and protein disarrangement to explain the ethanol injuries in the brain [36]; however, logically, the ethanol first acts on the environment or cell matrix and the membranes.

In this work, the study of erythrocyte fragility was to verify ethanol effects on the membranes. The concentration used for brain histology was 20% (24.4 gL<sup>-1</sup>), which was in the zone of the ethanol destruction of erythrocytes. Accordingly, it is plausible to think that membrane destruction of the neurons and glia could generate the histological problems in the migrated and dead cells. A study using neurons and glia under the effect of the ethanol in comparison with histological data could be performed to clarify this hypothesis.

Other important information from the experimentation is that NaCl can act as a protector of erythrocyte membranes. It behaves in a proportion relative to the concentration of solutions, i.e. a doubling of ethanol concentration by the number of particles is equivalent to half the NaCl concentration, because this salt ionizes into Na<sup>+</sup> and Cl<sup>-</sup> in an aqueous solution. Therefore, the concentration of particles in the system cannot explain the membrane destruction by ethanol, and the interactions among the molecules in the environment must be considered.

Indeed, the bipolarity of the ethanol should generate a disruption of the cell membranes [35]. If one considers that the ethanol hydrocarbon could dissolve the membrane, at least, partially, the general membrane structure should be disarranged, and all cell metabolism could suffer these effects, with the addition that the polar head of the ethanol can link with the membrane lipid heads, but it could have a lesser effect on the membrane stability that is

Comment [106]: Replace with: process

Comment [107]: Replace with: indicate a decrease in cerebral mass

Comment [108]: Replace with: relation between brain and body

Comment [109]: Add a comma.

Comment [110]: Replace with: parameters such as

Comment [111]: Replace with: indicates a null

Comment [112]: Remove

Comment [113]: Replace with: obtained

Comment [114]: Replace with: both the control

Comment [115]: Replace with: decrease in the brain mass of the treated according to the box graph (Fig. 4)

Comment [116]: Replace with: environment, or cell matrix, and

Comment [117]: Replace with: fragility was done to verify ethanol's effects

Comment [118]: Remove

Comment [119]: Remove

Comment [120]: Replace with: behaves in a proportion to

Comment [121]: Replace with: doubling of the ethanol

Comment [122]: Replace with: disorganized

generated by the molecular Van der Waals interactions. Despite the Van der Waals force being a weak one, in proximity, it becomes very strong because this interaction is proportional to the inverse of the distance raised to the power of 14. As the arrangement of the cell membranes is linked to the solvent properties, ethanol, because of its chaotropic effects, could change the solvent features and interfere with the Van der Waals forces. Accordingly, the ethanol effects occur, on all cell membranes by the alteration of the cell environment (cell matrix) and disruption of the membrane stability, according to the interaction force proportions. In this way, partial disruption of the blood-brain barrier could occur as verified before [25,26] in neurons.

**Comment [123]:** Replace with: membranes through the

**Comment [124]:** Remove

**Comment [125]:** Add a comma.

## 5. CONCLUSION

According to this work, the ethanol injection in the rats shows marked brain tissue destruction and decrease of brain mass, relative to the control, and ethanol's effects on erythrocytes indicated that membrane destruction could be one of the causes of brain cell disruption in neural migration.

**Comment [126]:** Replace with: rats showed marked brain tissue destruction and a decrease in brain mass relative

On the other hand, the chaotropic ethanol properties could destroy the matrix clues for neuron migration and glia organization, thus altering the cell environment and membrane stability.

The histology data linked to theoretical concepts indicate that neuron migration involves cellular structures such as the cytoskeleton, cell membranes and biomolecules of the extracellular matrix, which are together responsible for the space-time relationship that determines the specific location of neurons in the layers of the neocortex.

**Comment [127]:** Add a comma.

Chronic exposure to ethanol affects neuronal migration, producing severe changes in the structure of the neocortex, which comprise 1) decreased neuronal density in all lobes studied in animals treated with ethanol, 2) change in the location of neuronal cells, such as the occurrence of pyramidal neurons in the molecular layer and 3) alteration in the specific migration path of cells in the formation of the cortex.

**Comment [128]:** Replace with: ethanol, 2) a change

**Comment [129]:** Replace with: layer; and 3) an alteration

Acute ethanol treatment of rats on the twelfth day of intrauterine life determines a degree of severity on the neural system that is very similar to the chronic treatment with this drug throughout pregnancy in rats, including brain mass loss.

**Comment [130]:** Replace with; severity in the

These results are an indication for controlled ethanol ingestion or no use of ethanol during known or suspected gestation in human females.

## ETHICAL APPROVAL

A previous project about the immunohistochemistry and erythrocytes histology in rats were approved by Federal University of Tocantins as the experimental protocols described here [ethics committee from Federal University of Tocantins, number 23101.003220/2013-85] and all procedures were performed according with a Brazilian College of Animal Experimentation. The immunohistochemistry study and were performed, partially, at Federal University of Uberlândia, and at the University of Toyama-Japan was performed the experiments on brain and body masses and the stability of erythrocyte membranes in humans.

**Comment [131]:** Replace with: erythrocyte histology in rats was approved by the Federal

**Comment [132]:** Replace with: from the Federal

**Comment [133]:** Replace with: according to the Brazilian

**Comment [134]:** Replace with: study was partially performed at the Federal

**Comment [135]:** Replace with: Japan, experiments were performed on

## REFERENCES

1. Aronne MP, Guadagnoli T, Fontanet P, Evrard SG, Brusco A. Effects of prenatal ethanol exposure on rat brain radial glia and neuroblast migration. *Exp Neurol*. 2011; 229(2): 364–371. <https://doi.org/10.1016/j.expneurol.2011.03.002>
2. Collier AD, Halkina V, Min SS, Roberts MY, Campbell SD, Camidge K, et al. Embryonic ethanol exposure affects the early development, migration, and location of hypocretin/orexin neurons in Zebrafish. *Alcohol Clin Exp Res*. 2019; 43(8): 1702–1713. <https://doi.org/10.1111/acer.14126>
3. Brocardo PS, Gil-Mohapel J, Wortman R, Noonan A, McGinnis E, Patten AR, et al. The effects of ethanol exposure during distinct periods of brain development on oxidative stress in the adult rat brain. *Alcohol Clin Exp Res*. 2016; 41(1): 26–37. <https://doi.org/10.1111/acer.13266>
4. Redecker C, Hagemann G, Witte OW, Marret S, Evrard P, Gressens P. Long-term evolution of excitotoxic cortical dysgenesis induced in the developing rat brain. *Dev Brain Res*. 1998; 109(1): 109–113. [https://doi.org/10.1016/S0165-3806\(98\)00065-0](https://doi.org/10.1016/S0165-3806(98)00065-0)
5. Creeley CE, Olney JW. Drug-induced apoptosis: Mechanism by which alcohol and many other drugs can disrupt brain development. *Brain Sci*. 2013; 3(3): 1153–1181. <https://doi.org/10.3390/brainsci3031153>
6. Lotfullina N, Khazipov R. Ethanol and the developing brain: Inhibition of neuronal activity and neuroapoptosis. *Neuroscientist*. 2017; 24(2): 130–141. <https://doi.org/10.1177/1073858417712667>
7. Miller MW. Effects of prenatal exposure to ethanol on callosal projection neurons in rat somatosensory cortex. *Brain Res*. 1997; 766(1-2): 121–128. [https://doi.org/10.1016/S0006-8993\(97\)00533-7](https://doi.org/10.1016/S0006-8993(97)00533-7)
8. Komada M, Hara N, Kawachi S, Kawachi K, Kagawa N, Nagao T, et al. Mechanisms underlying neuro-inflammation and neurodevelopmental toxicity in the mouse neocortex following prenatal exposure to ethanol. *Sci Rep*. 2017; 7(1): 3–4. <https://doi.org/10.1038/s41598-017-04289-1>
9. Saito M, Chakraborty G, Hui M, Masiello K, Saito M. Ethanol-induced neurodegeneration and Glial activation in the developing brain. *Brain Sci*. 2016; 6(3): 4–6. <https://doi.org/10.3390/brainsci6030031>
10. Nestler EJ, Guitart X, Ortiz J, Trevisan L. Second messenger and protein phosphorylation mechanisms underlying possible genetic vulnerability to alcoholism. *Ann N Y Acad Sci*. 1994; 708(1): 108–118. <https://doi.org/10.1111/j.1749-6632.1994.tb24703.x>
11. Abbott CW, Rohac DJ, Bottom RT, Patadia S, Huffman KJ. Prenatal ethanol exposure and neocortical development: A transgenerational model of FASD. *Cereb Cortex*. 2018; 28(8): 2908–2921. <https://doi.org/10.1093/cercor/bhx168>
12. Basavarajappa BS, Subbanna S. Epigenetic mechanisms in developmental alcohol-induced neurobehavioral deficits. *Brain Sci*. 2016;6(2). <https://doi.org/10.3390/brainsci6020012>
13. Rachdaoui N, Li L, Willard B, Kasumov T, Previs S, Sarkar D. Turnover of histones and histone variants in postnatal rat brain: Effects of alcohol exposure. *Clin Epigenetics*. 2017;9: <https://doi.org/10.1186/s13148-017-0416-5>
14. Dohrman DP, West JR, Pantazis NJ. Ethanol reduces expression of the nerve growth factor receptor, but not nerve growth factor protein levels in the neonatal rat cerebellum. *Alcohol Clin Exp Res*. 2006; 21(5): 882–893. <https://doi.org/10.1111/j.1530-0277.1997.tb03853.x>
15. Ehrlich D, Humpel C. Chronic vascular risk factors (cholesterol, homocysteine, ethanol) impair spatial memory, decline cholinergic neurons and induce blood-brain barrier leakage in rats in vivo. *J Neurol Sci*. 2012; 322(1-2): 92–95.

- <https://doi.org/10.1016/j.jns.2012.07.002>
16. Granholm L, Todkar A, Bergman S, Nilsson K, Comasco E, Nylander I. The expression of opioid genes in non-classical reward areas depends on early life conditions and ethanol intake. *Brain Res.* 2017;1668: 36–45. <https://doi.org/10.1016/j.brainres.2017.05.006>
  17. Chen WJA, Maier SE, Parnell SE, West JR. Alcohol and the developing brain: Neuroanatomical studies. *Alcohol Res Heal.* 2003; 27(2): 174–180.
  18. Xia L, Jiao Z, Pei L, Yuan C, Zhao Y, Guo Y, et al. Prenatal ethanol exposure induced disorder of hypothalamic-pituitary-adrenal axis-associated neuroendocrine metabolic programming alteration and dysfunction of glucose and lipid metabolism in 40-week-old female offspring rats. *Reprod Toxicol.* 2020; 94: 48–54. <https://doi.org/10.1016/j.reprotox.2020.04.075>
  19. Costa LG, Giordano G, Guizzetti M. Inhibition of cholinergic muscarinic signaling by ethanol: Potential mechanism of developmental neurotoxicity and biological plausibility for the beneficial effects of choline supplementation. *Int J Alcohol Drug Res.* 2013; 2(3): 17-25. <https://doi.org/10.7895/ijadr.v2i3.72>
  20. Heroux NA, Horgan CJ, Rosen JB, Stanton ME. Cholinergic rescue of neurocognitive insult following third-trimester equivalent alcohol exposure in rats. *Neurobiol Learn Mem.* 2019 Sep. 107030. <https://doi.org/10.1016/j.nlm.2019.107030>
  21. Nirgudkar P, Taylor DH, Yanagawa Y, Valenzuela CF. Ethanol exposure during development reduces GABAergic/glycinergic neuron numbers and lobule volumes in the mouse cerebellar vermis. *Neurosci Lett.* 2016; 632: 86–91. <https://doi.org/10.1016/j.neulet.2016.08.039>
  22. Gil-Mohapel J, Titterness AK, Patten AR, Taylor S, Ratzlaff A, Ratzlaff T, et al. Prenatal ethanol exposure differentially affects hippocampal neurogenesis in the adolescent and aged brain. *Neurosci.* 2014; 273: 174–188. <https://doi.org/10.1016/j.neuroscience.2014.05.012>
  23. Goeke CM, Roberts ML, Hashimoto JG, Finn DA, Guizzetti M. Neonatal ethanol and choline treatments alter the morphology of developing rat hippocampal pyramidal neurons in opposite directions. *Neurosci.* 2018; 374: 13–24. <https://doi.org/10.1016/j.neuroscience.2018.01.031>
  24. Spadoni AD, McGee CL, Fryer SL, Riley EP. Neuroimaging and fetal alcohol spectrum disorders. *Neurosci Biobehav Rev.* 2007; 31(2): 239–245. <https://doi.org/10.1016/j.neubiorev.2006.09.006>
  25. Pollard I. Neuropharmacology of drugs and alcohol in mother and fetus. *Semin Fetal Neonatal Med.* 2007; 12(2): 106–113. <https://doi.org/10.1016/j.siny.2006.12.001>
  26. Wilson DF, Matschinsky FM. Ethanol metabolism: The good, the bad, and the ugly. *Med Hypotheses.* 2020; 140:109638. <https://doi.org/10.1016/j.mehy.2020.109638>
  27. Aversi-Ferreira TA, Nascimento GNL. The effect of acute and chronic exposure to ethanol on the developing encephalon: A review. *Rev Bras Saude Matern Infant.* 2008; 8(3): 241–249.
  28. Ingólfsson HI, Andersen OS. Alcohol's effects on lipid bilayer properties. *Biophys J.* 2011; 101(4): 847–855. <https://doi.org/10.1016/j.bpj.2011.07.013>
  29. Schambra UB, Lewis CN, Harrison TA. Deficits in spatial learning and memory in adult mice following acute, low or moderate levels of prenatal ethanol exposure during gastrulation or neurulation. *Neurotoxicol Teratol.* 2017; 62: 42–54. <https://doi.org/10.1016/j.ntt.2017.05.001>
  30. Astley SJ, Aylward EH, Olson HC, Kerns K, Brooks A, Coggins TE, et al. Magnetic resonance imaging outcomes from a comprehensive magnetic resonance study of children with fetal alcohol spectrum disorders. *Alcohol Clin Exp Res.* 2009; 33(10): 1671–1689. <https://doi.org/10.1111/j.1530-0277.2009.01004.x>
  31. Takahashi T, Nowakowski RS, Caviness VS. The leaving or Q fraction of the murine cerebral proliferative epithelium: A general model of neocortical neuronogenesis. *J*

- Neurosci. 1996; 16(19): 6183–6196. <https://doi.org/10.1523/JNEUROSCI.16-19-06183.1996>
32. Takahashi T, Nowakowski RS, Caviness VS. Interkinetic and migratory behavior of a cohort of neocortical neurons arising in the early embryonic murine cerebral wall. *J Neurosci.* 1996; 16(18): 5762–5776. <https://doi.org/10.1523/JNEUROSCI.16-18-05762.1996>
  33. Parnell SE, Holloway HE, Baker LK, Styner MA, Sulik KK. Dysmorphogenic effects of first trimester-equivalent ethanol exposure in mice: A magnetic resonance microscopy-based study. *Alcohol Clin Exp Res.* 2014; 38(7): 2008–2014. <https://doi.org/10.1111/acer.12464>
  34. Sawant OB, Lunde ER, Washburna SE, Chen W-JA, Goodlett CR, Cudda TA. Different patterns of regional purkinje cell loss in the cerebellar vermis as a function of the timing of prenatal ethanol exposure in an ovine model. *Neurotoxicology Teratol.* 2013; 35: 7–13. <https://doi.org/10.1016/j.ntt.2012.11.001>
  35. De Arvelos LR, Rocha VCA, Felix GP, Cunha CC, Neto MB, Filho MSG, et al. Bivariate and multivariate analyses of the influence of blood variables of patients submitted to Roux-en-Y gastric bypass on the stability of erythrocyte membrane against the chaotropic action of ethanol. *J Membr Biol.* 2013; 246(3): 231–242. <https://doi.org/10.1007/s00232-013-9524-0>
  36. Penha-Silva N, Arvelos LR, Cunha CC, Aversi-Ferreira TA, Gouvêa-e-Silva LF, Garrote-Filho MS, et al. Effects of glycerol and sorbitol on the thermal dependence of the lysis of human erythrocytes by ethanol. *Bioelectrochemistry.* 2008; 73(1): 23–29. <https://doi.org/10.1016/j.bioelechem.2008.04.002>
  37. Lindi C, Montorfano G, Marciari P. Rat erythrocyte susceptibility to lipid peroxidation after chronic ethanol intake. *Alcohol.* 1998; 16(4): 311–316. [https://doi.org/10.1016/S0741-8329\(98\)00020-2](https://doi.org/10.1016/S0741-8329(98)00020-2)
  38. Chan PC, Peller OG, Kesner L. Copper(II)-catalyzed lipid peroxidation in liposomes and erythrocyte membranes. *Lipids.* 1982; 17(5): 331–337. <https://doi.org/10.1007/BF02535190>
  39. Maturu P, Reddy VD, Padmavathi P, Varadacharyulu N. Ethanol induced adaptive changes in blood for the pathological and toxicological effects of chronic ethanol consumption in humans. *Exp Toxicol Pathol.* 2012; 64(7-8): 697–703. <https://doi.org/10.1016/j.etp.2011.01.002>
  40. Araki K, Rifkind JM. Rate of osmotic hemolysis SDS-polyacrylamide gel electrophoresis Electron spin resonance ( ESR ). 1981; 645(1): 81–90. [https://doi.org/10.1016/0005-2736\(81\)90514-9](https://doi.org/10.1016/0005-2736(81)90514-9)
  41. Tyulina O V, Huentelman MJ, Prokopieva VD, Boldyrev AA, Johnson P. Does ethanol metabolism affect erythrocyte hemolysis? *Biochim Biophys Acta - Mol Basis Dis.* 2000; 1535(1): 69–77. [https://doi.org/10.1016/S0925-4439\(00\)00086-7](https://doi.org/10.1016/S0925-4439(00)00086-7)
  42. Sonmez M, Ince HY, Yalcin O, Ajdžanović V, Spasojević I, Meiselman HJ, et al. The effect of alcohols on red blood cell mechanical properties and membrane fluidity depends on their molecular size. *PLoS One.* 2013; 8(9): e76579. <https://doi.org/10.1371/journal.pone.0076579>
  43. Chi LM, Wu WG. Mechanism of hemolysis of red blood cell mediated by ethanol. *BBA - Biomembr.* 1991; 1062(1): 46–50. [https://doi.org/10.1016/0005-2736\(91\)90333-4](https://doi.org/10.1016/0005-2736(91)90333-4)
  44. Igljić A. A possible mechanism determining the stability of spiculated red blood cells. *J Biomech.* 1997; 30(1): 35–40. [https://doi.org/10.1016/S0021-9290\(96\)00100-5](https://doi.org/10.1016/S0021-9290(96)00100-5)
  45. Buurma NJ, Pastorello L, Blandamer MJ, Engberts JBFN. Kinetic evidence for hydrophobically stabilized encounter complexes formed by hydrophobic esters in aqueous solutions containing monohydric alcohols. *J Am Chem Soc.* 2001; 123(48): 11848–11853. <https://doi.org/10.1021/ja010617w>
  46. Caviness VS. Architectonic map of neocortex of the normal mouse. *J Comp Neurol.*

- 1975; 164(2): 247–263. <https://doi.org/10.1002/cne.901640207>
47. Miller MW, Robertson S. Prenatal exposure to ethanol alters the postnatal development and transformation of radial glia to astrocytes in the cortex. *J Comp Neurol*. 1993; 337(2): 253–266. <https://doi.org/10.1002/cne.903370206>
  48. Lee H, Blaufox M. Blood volume in the rat: The estimation of blood volume is important in studies. *J Nucl Med*. 1985; 26(1): 72–76.
  49. Vertessy BG, Steck TL. Elasticity of the human red cell membrane skeleton. Effects of temperature and denaturants. *Biophys J*. 1989; 55(2): 255–262. [https://doi.org/10.1016/S0006-3495\(89\)82800-0](https://doi.org/10.1016/S0006-3495(89)82800-0)
  50. Supèr H, Soriano E, Uylings HBM. The functions of the preplate in development and evolution of the neocortex and hippocampus. *Brain Res Rev*. 1998; 27(1): 40–64. [https://doi.org/10.1016/S0165-0173\(98\)00005-8](https://doi.org/10.1016/S0165-0173(98)00005-8)
  51. Olney JW. Fetal alcohol syndrome at the cellular level. *Addict Biol*. 2004; 9(2): 137–149. <https://doi.org/10.1080/13556210410001717006>
  52. Cartwright MM, Smith SM. Increased cell death and reduced neural crest cell numbers in ethanol-exposed embryos: Partial Basis for the Fetal Alcohol Syndrome Phenotype. *Alcohol Clin Exp Res*. 1995; 19(2): 378–386. <https://doi.org/10.1111/j.1530-0277.1995.tb01519.x>
  53. Ikonomidou C, Bittigau P, Koch C, Genz K, Stefovská V, Hörster F. Ethanol-induced apoptotic neurodegeneration and fetal alcohol syndrome. *Science*. 2000; 287(5455): 1056–1060. <https://doi.org/10.1126/science.287.5455.1056>
  54. Driscoll CD, Streissguth AP, Riley EP. Prenatal alcohol exposure: Comparability of effects in humans and animal models. *Neurotoxicol Teratol*. 1990; 12(3): 231–237. [https://doi.org/10.1016/0892-0362\(90\)90094-S](https://doi.org/10.1016/0892-0362(90)90094-S)
  55. Dandekar MP, Bharne AP, Borkar PD, Subhedar NK, Kokare DM. Maternal ethanol exposure reshapes CART system in the rat brain: Correlation with development of anxiety, depression and memory deficits. *Neuroscience*. 2019; 406: 126–139. <https://doi.org/10.1016/j.neuroscience.2019.02.010>
  56. Dumas RM, Rabe A. Augmented memory loss in aging mice after one embryonic exposure to alcohol. *Neurotoxicol Teratol*. 1994; 16(6): 605–612. [https://doi.org/10.1016/0892-0362\(94\)90038-8](https://doi.org/10.1016/0892-0362(94)90038-8)
  57. Miller MW. Migration of cortical neurons is altered by gestational exposure to ethanol. *Alcohol Clin Exp Res*. 1993; 17(2): 304–314. <https://doi.org/10.1111/j.1530-0277.1993.tb00768.x>
  58. Ryabinin AE, Cole M, Bloom FE, Wilson MC. Exposure of neonatal rats to Alcohol by vapor inhalation demonstrates specificity of microcephaly and Purkinje Cell loss but not astrogliosis. *Alcohol Clin Exp Res*. 1995; 19(3): 784–791. <https://doi.org/10.1111/j.1530-0277.1995.tb01583.x>
  59. Gil-Mohapel J, Boehme F, Patten A, Cox A, Kainer L, Giles E, et al. Altered adult hippocampal neuronal maturation in a rat model of fetal alcohol syndrome. *Brain Res*. 2011; 1384: 29–41. <https://doi.org/10.1016/j.brainres.2011.01.116>
  60. Abbott CW. Adverse, transgenerational effects of prenatal ethanol exposure on the epigenome. PhD. Dissertation, University of California Riverside. 2015. Available from: <https://escholarship.org/uc/item/6st6q7p2>
  61. Lebedeva J, Zakharov A, Ogievetsky E, Minlebaeva A, Kurbanov R, Gerasimova E, et al. Inhibition of cortical activity and apoptosis caused by ethanol in neonatal rats In *Vivo*. *Cereb Cortex*. 2017; 27(2): 1068–1082. <https://doi.org/10.1093/cercor/bhv293>
  62. Lotfullina N, Khazipov R. Ethanol and the developing brain: Inhibition of neuronal activity and neuroapoptosis. *Neuroscientist*. 2018 Jun 24(2): 130–141. <https://doi.org/10.1177/1073858417712667>
  63. Bird CW, Barber MJ, Post HR, Jacquez B, Chavez GJ, Faturos NG, et al. Neonatal ethanol exposure triggers apoptosis in the murine retrosplenial cortex: Role of inhibition of NMDA receptor-driven action potential firing. *Neuropharmacology*. 2020;

- 162: 107837. <https://doi.org/10.1016/j.neuropharm.2019.107837>
64. Farber NB, Creeley CE, Olney JW. Alcohol-induced neuroapoptosis in the fetal macaque brain. *Neurobiol Dis.* 2010; 40(1): 200–206. <https://doi.org/10.1016/j.nbd.2010.05.025>
  65. Aversi-Ferreira TA, Rodrigues HG, Neres AC, Fonseca LC, Penha-Silva N. Immunohistochemical study of the olfactory bulb in Wistar rats submitted to acute prenatal exposure to ethanol. *Biosci J.* 2006; 21(2): 99–105.
  66. Aversi-Ferreira TA, Ferreira NR, Morais JOR, Penha-Silva N. Effects of acute prenatal exposure to ethanol on the postnatal morphology of the prefrontal cortex in Wistar rats. *Brazilian J Morphol.* 2004; 21(2): 99–103.
  67. Lopes DB, Nascimento GNL do, Carvalho AAV de, Neto AC de S, Lima NE de, Aversi-Ferreira TA. Immunohistochemical study of acute effects of ethanol on midbrain of Wistar rats associated with the date of birth of neurons in encephalon. *Int J Morphol.* 2009; 27(3): 677–682.
  68. Fedorchak AV, Miller MW. Episodic prenatal exposure to ethanol affects postnatal neurogenesis in the macaque dentate gyrus and visual recognition memory. *Int J Dev Neurosci.* 2019; 79: 65–75. <https://doi.org/10.1016/j.ijdevneu.2019.10.005>
  69. Guadagnoli T, Caltana L, Vacotto M, Gironacci MM, Brusco A. Direct effects of ethanol on neuronal differentiation: An in vitro analysis of viability and morphology. *Brain Res Bull.* 2016; 127: 177–186. <https://doi.org/10.1016/j.brainresbull.2016.09.013>
  70. Fink JM, Dobyms WB, Guerrini R, Hirsch BA. Identification of a duplication of Xq28 associated with bilateral periventricular nodular heterotopia. *Am J Hum Genet.* 1997 Aug 61(2): 379–387. <https://doi.org/10.1086/514863>
  71. Dobyms WB, Guerrini R, Czupansky-Beilman DK, Pierpont MEM, Breningstall G, Yock DH, et al. Bilateral periventricular nodular heterotopia with mental retardation and syndactyly in boys: A new X-linked mental retardation syndrome. *Neurology.* 1997; 49(4): 1042–1047. <https://doi.org/10.1212/WNL.49.4.1042>
  72. Vélez-Domínguez LC. Neuronal migration disorders. *Rev Médica MD.* 1998; 134(2): 207–215.
  73. Godin EA, O'Leary-Moore SK, Khan AA, Parnell SE, Ament JJ, Dehart DB, et al. Magnetic resonance microscopy defines ethanol-induced brain abnormalities in prenatal mice: Effects of acute insult on gestational day 7. *Alcohol Clin Exp Res.* 2010; 34(1): 98–111. [10.1111/j.1530-0277.2009.01071.x](https://doi.org/10.1111/j.1530-0277.2009.01071.x)
  74. Verrotti A, Spalice A, Ursitti F, Papetti L, Mariani R, Castronovo A, et al. New trends in neuronal migration disorders. *Eur J Paediatr Neurol.* 2010; 14(1): 1–12. <https://doi.org/10.1016/j.ejpn.2009.01.005>
  75. Liesi P. Ethanol-exposed central neurons fail to migrate and undergo apoptosis. *J Neurosci Res.* 1997; 48(5): 439–448.
  76. Vizi S, Palfi A, Gulya K. Multiple calmodulin genes exhibit systematically differential responses to chronic ethanol treatment and withdrawal in several regions of the rat brain. *Mol Brain Res.* 2000; 83(1-2): 63–71. [https://doi.org/10.1016/S0169-328X\(00\)00185-6](https://doi.org/10.1016/S0169-328X(00)00185-6)
  77. Fish EW, Holloway HT, Rumble A, Baker LK, Wieczorek LA, Moy SS, et al. Acute alcohol exposure during neurulation: Behavioral and brain structural consequences in adolescent C57BL/6J mice. *Behav Brain Res.* 2016; 311: 70–80. <https://doi.org/10.1016/j.bbr.2016.05.004>
  78. Cantacorps L, González-Pardo H, Arias JL, Valverde O, Conejo NM. Altered brain functional connectivity and behaviour in a mouse model of maternal alcohol binge-drinking. *Prog Neuro-Psychopharmacology Biol Psychiatry.* 2018; 84(Part A): 237–249. <https://doi.org/10.1016/j.pnpbp.2018.03.006>
  79. Houlé K, Abdi M, Clabough EBD. Acute ethanol exposure during late mouse neurodevelopment results in long-term deficits in memory retrieval, but not in social

- responsiveness. *Brain Behav.* 2017; 7(4): 1–9. <https://doi.org/10.1002/brb3.636>
80. Marquardt K, Brigman JL. The impact of prenatal alcohol exposure on social, cognitive and affective behavioral domains: Insights from rodent models. *Physiol Behav.* 2016; 176: 139–148. <https://doi.org/10.1016/j.alcohol.2015.12.002>
81. Britton SM, Miller MW. Neuronal loss in the developing cerebral cortex of normal and bax-deficient mice: Effects of ethanol exposure. *Neuroscience.* 2018; 369: 278–291. <https://doi.org/10.1016/j.neuroscience.2017.11.013>
82. Heymsfield SB, Chirachariyavej T, Rhyu IJ, Roongpisuthipong C, Heo M, Pietrobelli A. Differences between brain mass and body weight scaling to height: Potential mechanism of reduced mass-specific resting energy expenditure of taller adults. *J Appl Physiol.* 2009; 106: 40–48. <https://doi.org/10.1152/jappphysiol.91123.2008>
83. Rolls A, Shechter R, Schwartz M. The bright side of the glial scar in CNS repair. *Nat Rev Neurosci.* 2009; 10: 235–241. <https://doi.org/10.1038/nrn2591>

UNDER PEER REVIEW