

1  
2  
3 **Studies on variations in physico-chemical, biochemical and biological**  
4 **characteristics at different maturity stages of segregated and unsegregated urban**  
5 **solid waste of drum compost**  
6  
7

8 **Abstract:** The present study was under-taken to assess the changes of occurring during  
9 the decomposition of segregated and unsegregated urban solid waste of drum compost  
10 some typical physico-chemical, biochemical and biological characteristics. The physic-  
11 chemical analysis of compost from the point of view moisture content, pH, EC, organic  
12 carbon, calcium, magnesium, total NPK, C/N ratio, and micro nutrients agreed with  
13 recommended standards and higher heavy metals concentrations was detected at all the  
14 decomposition stages of composting. From the results, it can be concluded that, drum  
15 composting could produce acceptable quality of compost, which can be used as  
16 fertilizer or soil amendment.  
17

18 **Keywords:** Physico-chemical, Biochemical, Biological characteristic, Heavy metals,  
19 Urban solid waste drum compost.  
20

---

21 **Introduction**  
22

23 Municipal solid waste comprises all the wastes arising from human and animal  
24 activities. According to WHO (World Health Organization), solid waste can be defined  
25 as useless, unwanted or discarded materials arising from domestic, trade, commercial,  
26 industrial and agricultural as well as from public services. At present municipal solid  
27 waste (MSW) management has become a serious environmental problem and one of the  
28 major growing concerns for urban areas all over the world. In the typical countries, the  
29 major portion of the total solid waste is biodegradable organic matter. The high content  
30 of these biodegradable organic matter and other inert material, results in high waste  
31 density and high moisture content. Theses physical characteristics significantly  
32 influence the feasibility of certain treatment options.  
33

34 Current global waste generation levels are approximately 1.3 billion tonnes per  
35 year and are expected to increase approximately 2.6 billion tonnes annually by 2025.  
36 This represents a significant increase in per capita waste generation rates, from 1.2 to  
37 1.42 kg per person per day. The total municipal solid waste (MSW) generated in urban  
38 India is 68.8 million tonnes per year or 1, 88,500 tonnes per day. Per capita waste  
39 generation in major Indian cities ranges from 0.2 kg to 0.6 kg. This is estimated to  
40 increase at 1.33 percent annually (Shekdar, 1999). If the trend continues, urban India  
41 will generate 160.5 million tonnes per year (4,40,000 tonnes per day) by 2041.  
42

43 Municipal solid waste composting, however, has proved to be a safe and

44 effective way to accelerate the decomposition and stabilization of biodegradable  
45 components of bio-waste from MSW, leading to production of compost for soil  
46 amendment or as an organic nutrient source (Hargreaves *et al.*, 2008; Herrera *et al.*,  
47 2008). Composting is gaining interest as suitable option for chemical fertilizers with  
48 environmental profit, since this process eliminates or reduces toxicity of MSW  
49 (Kaushik and Garg (2003); Araujo and Monteiro (2005) and leads to a final product  
50 which can be used in improving and maintaining soil quality. Many studies have shown  
51 that the compost improves physical and chemical properties of soils by increasing  
52 nutrient content, organic matter, water holding capacity and cation exchange capacity.  
53 Thus contributing to improvement of crop yield and quality (Mylavarapu and Zinati,  
54 2009; Iovieno *et al.*, 2009).

55

56 Generally, successful composting depends on a number of factors that have  
57 both direct and indirect influence on the activities of the microorganism. They include  
58 the type of raw materials being composted, its nutrient composition, moisture content,  
59 temperature, alkalinity and aeration. To obtain a final product that is stable, free of  
60 pathogens, plant seeds can be beneficially applied to land (Lee and Han, 2005). Due to  
61 industrialization and urbanization in the Bengaluru city, population and municipal solid  
62 waste has increased simultaneously So, the study was undertaken to evaluate physico-  
63 chemical, biochemical and biological characteristics and heavy metal concentrations  
64 during different maturity stages of composting process of municipal solid waste. This  
65 study would help to understand the degradation of solid wastes at various stages.

66

## 67 **Materials and methods**

68 **Collection of compost samples:** City solid waste is obtained from in and around  
69 GKVK Bengaluru for the preparation of segregated and unsegregated composts, during  
70 the month of July 2015. Segregated urban solid waste such as vegetables, fruits, flower,  
71 dry leaves and saw dust are dumped into the drum composters and composting is done  
72 with microbial consortia (*Trichoderma viridae*, *Trichoderma harzianum*, *Pseudomonas*  
73 *fluorescence*, *phaenerochate chryosporium*, *Bacillus subtiles*) without contact with  
74 other urban dry waste. Whereas unsegregated urban waste as such available as waste  
75 without segregation and vegetables, fruits, flower, leaf litter along with solid dry waste  
76 like metals, papers, medicines, cosmetics etc. are dumped into the drum composters and  
77 composting is done with the use of microbial consortia. The segregated and  
78 unsegregated samples were collected during drum composting at different intervals of  
79 20<sup>th</sup>, 40<sup>th</sup>, 60<sup>th</sup> and 80<sup>th</sup> days of compost.

80

81

82

83 **Fig 1: A simple technology of composting urban waste and its use in agriculture**

84



**UAS (B) Drum Composter**

85  
86  
87  
88  
89  
90  
91

Fig 2: Changes during composting of segregated and unsegregated urban solid waste at different days of intervals



**Segregated drum compost**

92  
93  
94

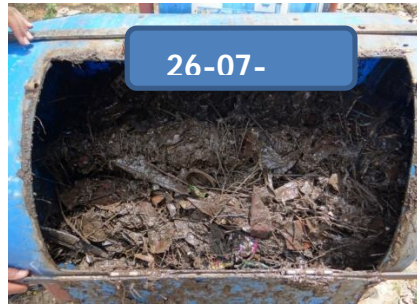


**Unsegregated drum compost**



**20<sup>th</sup> day of Segregated drum compost**

95  
96  
97  
98  
99  
100  
101  
102  
103  
104  
105



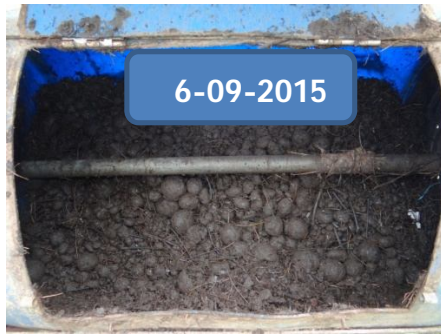
**20<sup>th</sup> day of Unsegregated drum compost**



40<sup>th</sup> day of Segregated drum compost



40<sup>th</sup> day of Unsegregated drum compost



60<sup>th</sup> day of Segregated drum compost



60<sup>th</sup> day of Unsegregated drum compost



80<sup>th</sup> day of Segregated drum compost



80<sup>th</sup> day of Unsegregated drum compost

## Analysis of compost samples

### 1. Physico-chemical analysis

The collected segregated and unsegregated samples were analyzed for various physico-chemical characteristics such as Moisture content (Pressure plate apparatus method); Bulk densities (Keen's cup method); pH (1:5 water extract by pH meter); Electrical conductivity (1:5 water extract, conductivity meter); Calcium and Magnesium

126 (1N ammonium acetate, EDTA method); organic carbon (Dry combustion); Total  
127 nitrogen (Microkjeldahl Digestion and Distillation); Total phosphorus  
128 (Vanadomolybdic yellow colour spectrophotometry) Total potassium (Flame  
129 photometry), Sulphur (Turbidimetry), Micronutrients (Atomic absorption  
130 spectrophotometry). The C/N ratio was calculated by using standard procedures for  
131 analysis (Jackson, 1973; Saha Arun Kumar, 2008 and Mani *et al* 2007).

132

## 133 **2. Biochemical analysis**

134 Lignin and cellulose Determination of lignin and cellulose was carried out by adopting  
135 the methodology given by Van Soest and Wine (1968).

136

137 **2.1 Acid Detergent Fibre (ADF):** One gram of sample was taken in a 250 ml round  
138 bottom flask and 100 ml acid detergent solution (Cetyl trimethyl ammonium bromide)  
139 was added. The contents of the flask were boiled for 10 minutes and refluxed for one  
140 hour after the onset of boiling. Later the contents were cooled and filtered through pre  
141 weighed Gooch crucible by suction and washed with hot water twice, again washed  
142 with acetone to break the lumps. It was then dried to 100 °C in a hot air oven for 12  
143 hours and weight was recorded after cooling.

144

145 **2.2 Acid Detergent Lignin (ADL):** The residue from ADF was transferred to 100 ml  
146 beaker containing 50 ml of 72 percent H<sub>2</sub>SO<sub>4</sub> and allowed to stand for three hours and  
147 boiled for 4 hours after diluting. The contents were cooled and filtered through  
148 preweighed Whatman No. 1 filter paper. The residue was washed several times with  
149 distilled water to get rid of acid. Filter paper along with residue was dried at 100 °C and  
150 weight was recorded after cooling the desiccator. The filter paper along with residue  
151 was transferred to pre-weighed silica crucible and contents were ashed in muffle  
152 furnace kept at 550 °C for 3 hours. Weight of the crucible was recorded after cooling in  
153 desiccators and the ash content was calculated.

154

155 The lignin and cellulose were calculated using formulae

156 Lignin= Residue after extraction with 72 percent H<sub>2</sub>SO<sub>4</sub>- Ash

157 Cellulose= ADF - Residue after extraction with 72 percent H<sub>2</sub>SO<sub>4</sub>

158

## 159 **2.3 Extraction, fractionation and quantification of humic substances**

160 **2.3.1 Extraction of humic substances:** Ten gram of air dried compost sample was  
161 taken in 250 ml conical flask to which 100 ml of 0.1 M NaOH in 0.1 M sodium  
162 pyrophosphate was added, stoppered and shaken for 24 hours. The dark colored  
163 supernatant was separated by centrifugation and collected. The extraction was repeated  
164 thrice with 50 ml of extractant for complete extraction of the humic substances.

166 **2.3.2 Fractionation of humic substances:** The pooled alkali extracts were acidified to  
167 pH 2.0 with 2 N HCl, stirred well and allowed to stand at room temperature for 24  
168 hours. Then the soluble fulvic acid was separated from the coagulated humic acid  
169 fraction by centrifugation. The process of precipitation and centrifugation were repeated  
170 to attain partial purification of humic acid fraction as described by Schnitzer (1982).

171

## 172 **2.4 Purification and quantification of organic matter fractions**

173 **2.4.1 Purification of humic acid:** Humic acid was further purified by treating the  
174 extracted humic acid fraction with HCl-HF mixture (5 mL each of HCl and HF acids  
175 were dissolved in 990 mL of double distilled water) for 24 hours. The acid mixture was  
176 separated by centrifugation. This treatment was repeated thrice in succession. Finally,  
177 the residue was thoroughly washed with distilled water and freeze dried. The sample  
178 weights were recorded before using it for the further analysis.

179

180 **2.4.2 Purification of fulvic acid:** The purification of fulvic acid was done as outlined  
181 by Wander and Traina (1996). The fulvic acid fraction was transferred to 100 mwco  
182 dialysis bags and dialysed against double distilled water for 24 hours. The dialyzed  
183 fraction was evaporated under low temperature and finally freeze dried. The dried  
184 sample were weighed and stored for further analysis.

185

## 186 **2.5 Characterization of humic acid and fulvic acid**

187 Purified samples of humic and fulvic acids extracted from matured composts  
188 were subjected to  $E_4/E_6$  ratio using the procedure outlined by Schnitzer (1982).  $E_4/E_6$   
189 ratio: The degree of humification and aromaticity of humic acid was measured using  
190  $E_4/E_6$  ratios. A known quantity of the sample was taken and dissolved in 10 mL of  
191  $1 \times 10^{-2}$  M  $\text{NaHCO}_3$  solution. The absorbance's at 465 and 665 nm was measured using  
192 UV-VIS scanning spectrophotometer and the absorbance ratio was recorded.

193

## 194 **3. Bacteriological analysis**

### 195 **N fixer and P solubilize**

196 The microbial load of compost was analysed for N fixer and P solubilizer by  
197 following the standard dilution plate count technique. Combined carbon media for N  
198 fixers and Sperber's medium for  $\text{PO}_4$ -solubilizers were used for enumeration of  
199 microbial population. The petri plates containing media for N-fixers and P solubilizer  
200 were incubated at  $30^\circ\text{C}$  for three to six days and population was counted and expressed  
201 per unit dry weight of substrate.

202

## 203 **4. Heavy metal analysis**

204 The 1g of oven dried sample was transferred to 100 ml beaker. A tri acid  
205 mixture (10 ml) consisting of HNO<sub>3</sub>, H<sub>2</sub>SO<sub>4</sub> and HClO<sub>4</sub> in the ratio 9:2:1 was added to  
206 each of the flasks with 100 ml of distilled water and digested on hot plate until the  
207 dense fumes of HClO<sub>4</sub> cease, to get a clear extract. The beakers were then allowed to  
208 cool and the extracts were filtered with Whatman No.42 filter paper. The filtrates were  
209 diluted to 100 ml in standard flasks to have an adequate volume of solution for analysis.  
210 The dilution factor was noted. The water soluble and acid digested extracts were  
211 analyzed for quantitative estimation of heavy metals (cadmium, lead, chromium and  
212 nickel) using atomic absorption spectrophotometer (Mani *et al*, 2007).

213

## 214 **Results and discussion**

### 215 **Physical characteristics**

#### 216 **Moisture content**

217 The moisture content decreased in both methods with increasing days of interval (Table  
218 1). The moisture ranged from 47.50 percent (S<sub>1</sub>) to 45.33 percent (S<sub>2</sub>) on 20<sup>th</sup> day and  
219 on 80<sup>th</sup> day from 23.65 percent (S<sub>1</sub>) to 22.03 percent (S<sub>2</sub>) (table 1). Among the methods  
220 segregated (S<sub>1</sub>) recorded higher moisture content over unsegregated (S<sub>2</sub>) method at all  
221 interval of days.

222

223 Moisture content of the composting blend is an important environmental  
224 variable as it provides a medium for the transport of dissolved nutrients required for the  
225 metabolic and physiological activities of micro-organisms (Elango, 2009).

226

227 In comparison with recommended standards (Biotreat, 2003) except 60 and 50  
228 days compost sample, in all the maturity stages, moisture content percentage was found  
229 to be high and during different degradation stages decrease in moisture content has been  
230 observed from 10 days to 60 days which can heat generated by biological metabolism  
231 and air flow increases the water evaporation in the bioreactor, consequently decreasing  
232 the moisture content. Decline in the moisture content percentage during the  
233 thermophilic phase of composting due to high evaporating rates has been recorded by  
234 Larney and Blackshow (2003).

**Table 1.** Changes in moisture, temperature and bulk density during composting of segregated and unsegregated urban solid waste in drum composting at different intervals of days

Days	Moisture (%)				Temperature (°C)				Bulk density (g/cm <sup>3</sup> )			
	20	40	60	80	20	40	60	80	20	40	60	80
Segregated drum compost (S <sub>1</sub> )	47.5	38.52	26.64	23.65	44	61	52	31	1.14	1.07	1.02	1.01
Unsegregated drum compost (S <sub>2</sub> )	45.33	32.91	25.60	22.03	47	65	56	35	1.34	1.28	1.12	1.04

**Table 2.** Changes in the pH, EC, organic carbon and C/N ratio during composting of segregated and unsegregated urban solid waste

Methods	pH				Electrical Conductivity (dSm-1)				Organic carbon (%)				C/N ratio			
	20	40	60	80	20	40	60	80	20	40	60	80	20	40	60	80
	Days				Days				Days				Days			
S <sub>1</sub>	7.4	8.11	7.71	7.35	4.1	2.36	1.24	1.12	38.1	34.12	31.25	29.16	38.48	25.8	21.85	17.78
S <sub>2</sub>	7.74	8.26	8.04	7.84	4.41	3.27	2.42	1.51	37.52	31.84	27.4	24.17	41.68	31.2	23.82	19.81

\* Note: S<sub>1</sub>= Segregated drum compost S<sub>2</sub>= Unsegregated drum compost

## Temperature

The temperature which was initially 35 °C in both of compost was increased to 61 °C and 65 °C on the 40<sup>th</sup> day of composting and later the temperature gradually stabilizing at ambient temperature of 31 °C and 35 °C in segregated and unsegregated drum compost, respectively at 80<sup>th</sup> of composting (Table 1).

As the decomposition is microbial mediated the microbial respiration accompanied by release of energy during decomposition and due to the compaction of overlying decomposable materials the temperature increases (Verdonack, 1988). As the decomposition was microbially mediated, the microbial respiration accompanied by the release of carbon dioxide and energy during decomposition and due to the compaction of overlying decomposable materials the temperature increases then stabilized. Similar results were reported by Narkhede *et al.* (2010).

## Bulk density

The bulk density of the segregated and unsegregated urban solid waste ranged from 1.14 (S<sub>1</sub>) to 1.34 g/cm<sup>3</sup> (S<sub>2</sub>) on 20<sup>th</sup> day and 1.01 (S<sub>1</sub>) to 1.04 g/cm<sup>3</sup> (S<sub>2</sub>) on 80<sup>th</sup> days of composting (Table 1). The bulk density of segregated and unsegregated urban compost is defined as its weight per unit volume. During the present investigation the bulk density ranged from 1.34 to 1.04 g/cm<sup>3</sup>. The results were in conformity with findings of Brinton (2003) who reported that during the composting process, microbial activity break down the loosely combined raw materials into smaller pieces after degradation resulting in decreased bulk density.

## Chemical characteristics

### pH

The pH of the segregated and unsegregated urban solid waste ranged from 7.40 (S<sub>1</sub>) to 7.74 (S<sub>2</sub>) on 20<sup>th</sup> day and 7.35 segregated (S<sub>1</sub>) to 7.84 unsegregated drum compost (S<sub>2</sub>) on 80<sup>th</sup> day of composting (Table 2). The increase in the pH is attributed the dissociation of organic acids to carbon dioxide. The slow increase may be due to disappearance of organic acids to form less acidic intermediates or due to buffering action of humic substances.

The findings of this study concurred with the result of Verdonck (1988) who indicated that during biological conversion of waste to humus the acid forming bacteria brought the drop in pH and this was followed by an increase in pH to alkaline condition due to ammonia formation which finally stabilizes at near neutral condition. In comparison with recommended standards (Bordna Mona, 2003), except 40, 50 and 60 days old compost samples, pH values were found to be higher than the normal range which implies that, during different degradation stages decrease in pH has been

observed from 10 days to 60 days which can attributed to the produce CO<sub>2</sub> from organic acids and loss of nitrogen (Lugtenberg, 2009).

### **Electrical conductivity (EC)**

The electrical conductivity (dS m<sup>-1</sup>) of the two methods ranged from 4.10 (S<sub>1</sub>) to 4.41(S<sub>2</sub>) on 20<sup>th</sup> day and decreased to 1.12 segregated (S<sub>1</sub>) to 1.51 unsegregated (S<sub>2</sub>) on 80<sup>th</sup> day of composting (Table 2). The findings of this study concurred with the result of Seema (2007) and Reddy *et al.* (2000) assessed the feasibility of composting separated organic matter of municipal solid waste (MSW) generated in low, middle and high income areas of Karachi city with a population over 14 million. The soluble salts 3.90-5.10 mS cm<sup>-1</sup>. The electrical conductivity decreases might be due to the concentration of ions and soluble salts reduced during the composting process.

### **Organic carbon and C/N ratio**

The data recorded on the changes in organic carbon and C:N ratio of the decomposing materials at different intervals of composting are given in (Table 2).

The organic carbon content decreased during composting irrespective of the treatments. The organic carbon values of segregated and unsegregated urban solid waste ranged from 38.10 (S<sub>1</sub>) to 37.52 (S<sub>2</sub>) percent on 20<sup>th</sup> days and decreased from segregated 29.16 (S<sub>1</sub>) to 24.17 percent unsegregated (S<sub>2</sub>) on 80<sup>th</sup> day. Among the methods (S<sub>2</sub>) segregated recorded least organic carbon 24.17 compared to unsegregated drum compost.

The C: N ratio decreased over the time in both the methods. The C:N ratio ranged from 38.48 (S<sub>1</sub>) to 41.68 (S<sub>2</sub>) on 20<sup>th</sup> day and decreased with time interval and recorded 17.78 (S<sub>1</sub>) to 19.81 (S<sub>2</sub>) on 80<sup>th</sup> day. Among the methods (S<sub>2</sub>) unsegregated recorded higher C: N ratio as compared to segregated compost.

The losses of organic carbon were significantly affected by composting. It was found that, the percentage of organic carbon decreased, which shows the decomposition of waste by microbial population (Mondini *et al.*, 2003). The percentage of organic carbon decreased, which shows the decomposition of waste by microbial population. Part of the carbon in the decomposing residues evolved as CO<sub>2</sub> and a part was assimilated by the microbial biomass (Shabani *et al.*, 2011).

C/N ratio is one of the most important parameters that determine the extent of composting and degree of compost maturity. These results are in line with reports of Ayesha (2010). Jadia and Fulekar, (2008) reported that the decrease in C:N ratio could be due to respiratory activity of microorganisms and increase in total nitrogen by mineralization of organic matter.

## Nitrogen

The nitrogen content of the decomposing material increased during composting period. The nitrogen content ranged from 0.99 segregated (S<sub>1</sub>) to 0.86 percent unsegregated on 20<sup>th</sup> day and the values increased with time intervals as recorded 1.64 segregated (S<sub>1</sub>) to 1.22 percent unsegregated (S<sub>2</sub>) on 80<sup>th</sup> day (Table 3). Among the methods, segregated (S<sub>1</sub>) recorded higher percentage of nitrogen.

In mature composts, most of the nitrogen is in organic form. The increase in nitrogen concentration during composting will be caused by the decrease of substrate carbon resulting from the loss of CO<sub>2</sub> because of the decomposition of the organic matter, which is chemically bound to nitrogen. Dimambro *et al.* (2007) described that the increase in nitrogen content during composting was due to nitrogen release by micro-organism's metabolic products and dead tissue. Loss of organic carbon might be responsible for nitrogen addition in the form of mucus nitrogenous excretory substances, growth stimulatory hormones and enzymes.

**Table 3.** Changes in nitrogen, phosphorus and potassium contents during drum composting of segregated and unsegregated urban solid waste

Methods	Nitrogen (%)				Phosphorus (%)				Potassium (%)			
	20	40	60	80	20	40	60	80	20	40	60	80
	Days of composting											
S <sub>1</sub>	0.99	1.32	1.43	1.64	0.28	0.35	0.41	0.45	0.72	0.87	0.93	1.11
S <sub>2</sub>	0.86	1.02	1.15	1.22	0.19	0.24	0.29	0.32	0.62	0.72	0.85	0.91

## Phosphorus

The phosphorus increased in both the methods with time. The phosphorus content ranged from 0.28 (S<sub>1</sub>) to 0.19 (S<sub>2</sub>) percent on 20<sup>th</sup> day and higher values of 0.45 (S<sub>1</sub>) to 0.32 percent segregated (S<sub>2</sub>) on 80<sup>th</sup> day (Table 3). Among the methods (S<sub>1</sub>) recorded higher percentage of phosphorus. In comparison with recommended standards (Bordna Mona, 2003) the phosphorous were found higher in all the samples. The phosphorous content gradually increased during composting process and water solubility of phosphorous decreases with humification so that; phosphorous solubility during the decomposition was subjected to further immobilization factor (Elango *et al.*, 2009).

## Potassium

The potassium increased in the all both methods of composting. During the composting period, the potassium content ranged from 0.72 (S<sub>1</sub>) to 0.62 (S<sub>2</sub>) percent on 20<sup>th</sup> day and higher values of 1.11 segregated (S<sub>1</sub>) 0.91 percent unsegregated (S<sub>2</sub>) on

80<sup>th</sup> day (Table 3). Among the methods (S<sub>2</sub>) recorded lower percentage of potassium. In the present study, composts might be due to quick microbial activity leading to decrease in volume of the material and also observed higher amount of K content in compost. Shabani *et al.* (2011) stated that the increase in potassium in the compost might be attributed to increased mineralization of these elements due to enhanced microbial and enzyme activity. The results are in conformity with findings of Reddy *et al.* (2000).

### Calcium and Magnesium

The calcium content of both the methods increased with time which ranged from 1.23 (S<sub>1</sub>) to 0.73 (S<sub>2</sub>) percent on 20<sup>th</sup> day and increased to 1.47 segregated (S<sub>1</sub>) to 0.95 percent unsegregated (S<sub>2</sub>) on 80<sup>th</sup> day (Table 4). The magnesium content ranged from 0.49 (S<sub>1</sub>) to 0.34 (S<sub>2</sub>) percent on 20<sup>th</sup> day and from 0.74 segregated (S<sub>1</sub>) to 0.56 percent unsegregated (S<sub>2</sub>) on 80<sup>th</sup> day.

In both methods of compost calcium and magnesium content increases with increasing days of interval. Increased calcium and magnesium content of composts during composting might be due to production of calcium and magnesium oxides and hydroxides during decomposition of the organic matter there by increase in the calcium and magnesium content in compost (Garcia *et al.*, 2000).

**Table 4.** Changes in calcium, magnesium and sulphur contents during drum composting of segregated and unsegregated urban solid waste

Methods	Calcium (%)				Magnesium (%)				Sulphur (%)			
	20	40	60	80	20	40	60	80	20	40	60	80
	Days of composting											
S <sub>1</sub>	1.20	1.40	1.40	1.50	0.50	0.60	0.70	0.70	0.50	0.60	0.60	0.76
S <sub>2</sub>	0.70	0.80	0.90	1.00	0.30	0.40	0.50	0.60	0.30	0.50	0.60	0.64

### Sulphur

The sulphur content increased in both the methods during the composting. The sulphur content ranged from 0.45 (S<sub>1</sub>) to 0.31 (S<sub>2</sub>) percent on 20<sup>th</sup> day and increased to 0.76 segregated (S<sub>1</sub>) to 0.64 percent unsegregated (S<sub>2</sub>) on 80<sup>th</sup> day (Table 4). Among the methods (S<sub>1</sub>) recorded higher percentage of calcium, magnesium and sulphur as compared to unsegregated compost.

The present investigation on soluble sulphate varied from 16.36 to 61.95 per cent the minimum percentage of soluble sulphate was recorded in 10 days old compost sample with 16.36 percent and maximum for 60 days old compost sample with 61.95 percent.

The variation of sulphate concentrations mainly depends on the decomposition of organic matter present in the solid wastes. In anaerobic decomposition of solid

wastes, sulphate is reduced to hydrogen sulphide, causing obnoxious odors and promotes corrosion (Shivakumar *et al.*, 2004).

## **Micronutrients**

The micronutrient content increased in both composting methods during drum composting. The zinc content in both the methods varied from 67.13 (S<sub>1</sub>) to 129.93 ppm (S<sub>2</sub>) on 20<sup>th</sup> day and on 80<sup>th</sup> day it ranged from 118.07 segregated (S<sub>1</sub>) to 143.17 ppm unsegregated (S<sub>2</sub>) (Table 5). The iron content in both the methods varied from 3242.60 (S<sub>1</sub>) to 3445.52 ppm (S<sub>2</sub>) on 20<sup>th</sup> day and on 80<sup>th</sup> day it ranged from 13529.11 segregated (S<sub>1</sub>) to 3752.2 ppm unsegregated (S<sub>2</sub>).

The copper content in both the methods varied from 22.80 (S<sub>1</sub>) to 28.21 ppm (S<sub>2</sub>) on 20<sup>th</sup> day and on 80<sup>th</sup> day it ranged from segregated 44.23 (S<sub>1</sub>) to 42.11 ppm unsegregated (S<sub>2</sub>). The manganese content in both methods varied from 267.21 (S<sub>1</sub>) to 313.33 ppm (S<sub>2</sub>) on 20<sup>th</sup> day and on 80<sup>th</sup> day it ranged from segregated 350.67 (S<sub>1</sub>) to 366.33 ppm unsegregated (S<sub>2</sub>). The unsegregated compost was having higher concentration of micronutrients compared to segregated compost. Source segregated composts should contain low level of micronutrients, while higher level can be expected in mixed MSW compost. Increased micronutrients content in both methods of composts might be due to organo-metallic chelation of micronutrients (Dakshinamurthy and Upendra, 2008). The concentration of the micronutrients in the raw materials used for the composting also one of the cause increased micronutrients in the composts (Das *et al.*, 2010).

## **Heavy metals**

The lead content increased in during the composting lead content increase in both the segregated and unsegregated composting method (Table 6). The lead content in both treatments ranged from 10.20 (S<sub>1</sub>) to 34.27 ppm (S<sub>2</sub>) on 20<sup>th</sup> day and on 80<sup>th</sup> day it ranged from 23.87 segregated (S<sub>1</sub>) to 43.62 ppm unsegregated (S<sub>2</sub>).

The chromium content in both segregated and unsegregated composting varied from 6.21 (S<sub>1</sub>) to 18.32 ppm (S<sub>2</sub>) on 20<sup>th</sup> day and on 80<sup>th</sup> day it ranged from 12.53 segregated (S<sub>1</sub>) to 23.21 unsegregated (S<sub>2</sub>). The nickel content in both methods varied from 5.26 (S<sub>1</sub>) to 15.54 ppm (S<sub>2</sub>) on 20<sup>th</sup> day and on 80<sup>th</sup> day it ranged from 10.71 segregated (S<sub>1</sub>) to 23.42 ppm unsegregated (S<sub>2</sub>). The cadmium was not detected in both methods.

**Table 5.** Changes in micronutrients content during composting of segregated and unsegregated urban solid waste

Methods	Zinc (ppm)				Iron (ppm)				Copper (ppm)				Manganese (ppm)			
	20	40	60	80	20	40	60	80	20	40	60	80	20	40	60	80
	Days of composting															
S <sub>1</sub>	67.13	92.73	108.07	118.07	3242.6	3362.21	3437.71	3529.11	22.8	28.42	36.87	44.23	267.2	275.4	341.6	350.67
S <sub>2</sub>	129.93	133.47	135.2	143.07	3445.5	3561.3	3604	3752.2	28.21	32.67	38.24	42.11	313.33	330.67	357.33	366.33

**Table 6.** Changes in heavy metals contents during composting of segregated and unsegregated urban solid waste

Methods	Pb (ppm)				Cr (ppm)				Cd (ppm)				Ni (ppm)			
	20	40	60	80	20	40	60	80	20	40	60	80	20	40	60	80
	Days of composting															
S <sub>1</sub>	10.2	16.4	20	23.9	6.2	8.3	11	12.5	ND	ND	ND	ND	5.3	7	9.3	13
S <sub>2</sub>	34.3	39.2	41	43.6	18	20	21	23.2	ND	ND	ND	ND	16	18	20	23

\*Note: S<sub>1</sub>-Segregated drum compost      S<sub>2</sub>-Unsegregated drum compost

The unsegregated compost was having higher concentration of heavy metals compared to segregated compost. Source segregated composts should contain low level of toxic element, while higher level can be accepted in mixed MSW compost. Heavy metals are sourced from batteries, solder, wine bottle cap; circuit stabilizers in plastics may contain potentially toxic elements (Richard and woodbury 1992). Stillwell and David (1993) who reported that the compost prepared from municipal solid waste had higher concentration of heavy metal elements. Manju *et al.* (2013) also reported that municipal solid waste compost contains the concentration of heavy metals as per the Indian standards.

## Biochemical characteristics

### Cellulose and lignin

The cellulose content of segregated and unsegregated urban solid waste compost subjected to different methods of composting was decreased with time (Table 7). The cellulose content ranged from 48.38 (S<sub>1</sub>) to 44.43 (S<sub>2</sub>) percent on 20<sup>th</sup> day and from 28.12 segregated (S<sub>1</sub>) to 25.26 percent unsegregated drum compost (S<sub>2</sub>) on 80<sup>th</sup> day.

The lignin content of the decomposing of segregated and unsegregated urban solid waste subjected to different methods of composting decreased with time. The lignin content ranged from 32.65 (S<sub>1</sub>) to 30.10 (S<sub>2</sub>) percent on 20<sup>th</sup> day and from 21.87 segregated (S<sub>1</sub>) to 19.32 percent unsegregated drum compost (S<sub>2</sub>) on 80<sup>th</sup> day.

**Table 7.** Changes in cellulose and lignin properties of during drum composting of segregated and unsegregated urban solid waste

Methods	Cellulose (%)				Lignin (%)			
	20	40	60	80	20	40	60	80
	Days							
S <sub>1</sub>	48.38	38.67	32.18	28.12	32.65	27.32	23.05	21.87
S <sub>2</sub>	44.43	35.41	29.32	25.26	30.10	23.52	21.12	19.32

Note: S<sub>1</sub>-Segregated drum compost S<sub>2</sub>-Unsegregated drum compost

The segregated and unsegregated compost changes in the content of cellulose and lignin over the period of time and due to the different methods of composting. The Solid urban wastes are known to be made up of different organic compounds which vary in their degree of being decomposed. Some compounds such as simple sugars and proteins are degraded at a faster rate followed by hemi cellulose, cellulose and lignin.

Since composting is a microbial mediated process these organisms act upon the easily degradable materials first, followed by hard to degrade materials because of their complex chemical structure as in the case of cellulose and lignin. Microbial succession ensures the breaking down of such compounds over a period of time. The results clearly showed that microbial inoculation has enhanced the degradation of cellulose and lignin over a period of time. The results clearly indicate that the segregated compost was having higher cellulose and lignin content than unsegregated compost.

Biochemical properties showed that the degradation of cellulose was marginally higher than lignin (Cortez et al. 1996). However, lignin to cellulose ratio was more in FYM and compared to segregated and unsegregated urban compost and might be due to the presence of fairly good amount of lignin and cellulose which is highly resistant to decomposition.

Summerella and Burges (1989) attributed the decrease in lignin content to weakening of lignin structures to be the cause for reduction in the lignin content over a period of time. Cellulose hydrolysis-fermentation process involving the breakdown of cellulose in to component glucose molecules is as a result of microbial inoculation (Dimambro *et al.*, 2007).

### **Humic acid**

The humic acid content of the composting of segregated and unsegregated urban solid waste subjected to different methods of composting increased with time. The humic acid content ranged from 1.13 (S<sub>1</sub>) to 0.94 (S<sub>2</sub>) percent on 20<sup>th</sup> day and from 8.02 segregated (S<sub>1</sub>) to 6.45 percent unsegregated drum compost (S<sub>2</sub>) on 80<sup>th</sup> day (Table 8). The humic fractions were more in segregated and unsegregated compost compared to FYM which indicates better decomposition and maturity of compost as reported by Chefetz *et al.* (1996).

### **Fulvic acid**

The fulvic acid content of the composting of segregated and unsegregated urban solid waste subjected to different methods of composting increased with time. The fulvic acid content ranged from 0.53 (S<sub>1</sub>) to 0.23 (S<sub>2</sub>) percent on 20<sup>th</sup> day and from 2.42 segregated (S<sub>1</sub>) to 1.96 percent unsegregated drum compost (S<sub>2</sub>) on 80<sup>th</sup> day (Table 8). A survey of MSW compost reported that the majority of the humic substances found in MSW compost were identified as humic acid, with a humic acid to fulvic acid ratio of 3.55 (He *et al.*, 1995).

**Table 8.** Changes in biochemical properties of during drum composting of segregated and unsegregated solid waste

Methods	Humic acid (%)				Fulvic acid (%)				Humus index				E <sub>4</sub> /E <sub>6</sub> ratio			
	20	40	60	80	20	40	60	80	20	40	60	80	20	40	60	80
	Days of composting															
S <sub>1</sub>	1.13	3.32	5.67	8.02	0.53	1.32	1.97	2.42	2.13	1.68	2.87	3.31	0.58	2.01	3.54	4.12
S <sub>2</sub>	0.94	2.54	4.75	6.45	0.23	0.75	1.21	1.96	4.08	3.38	3.92	3.33	0.49	1.03	2.13	3.43

## Humus index

The humus index of the composting of segregated and unsegregated urban solid waste subjected to different methods of composting increased with time. The humus index ranged from 2.13 (S<sub>1</sub>) to 4.08 (S<sub>2</sub>) on 20<sup>th</sup> day and from 3.31 segregated (S<sub>1</sub>) to 3.29 unsegregated (S<sub>2</sub>) on 80<sup>th</sup> day (Table 8). A survey of MSW compost reported that the majority of the humic substances found in MSW compost were identified as humic acid, with a humic acid to fulvic acid ratio of 3.55 (He *et al.*, 1995).

## E<sub>4</sub>/E<sub>6</sub> ratio

The E<sub>4</sub>/E<sub>6</sub> ratio of the composting of segregated and unsegregated urban solid waste subjected to different methods of composting increased with time. The E<sub>4</sub>/E<sub>6</sub> ratio ranged from 0.58 (S<sub>1</sub>) to 0.49 (S<sub>2</sub>) on 20<sup>th</sup> day and from 4.12 (S<sub>1</sub>) to 3.34 (S<sub>2</sub>) on 80<sup>th</sup> day (Table 8). E<sub>4</sub>/E<sub>6</sub> ratio is an indicator of degree of aromatic city of composts and it ranged from 2.12, 4.12 and 3.43 FYM, segregated and unsegregated urban compost, respectively. which indicates better decomposition and maturity of compost as reported by Chefetz *et al.* (1996).

## Biological properties

The biological studies recorded the N fixers population ranges from 21.72 segregated (S<sub>1</sub>) to 19.85 cfu x 10<sup>5</sup> g<sup>-1</sup> in unsegregated drum compost (S<sub>2</sub>) on 80<sup>th</sup> day of maturity of compost (Table 9). The biological studies recorded the P solubilizer population ranges from 234.56 segregated (S<sub>1</sub>) to 225.23 cfu x 10<sup>5</sup> g<sup>-1</sup> in unsegregated drum compost (S<sub>2</sub>) on 80<sup>th</sup> day of maturity of compost.

These observations are in conformity with those obtained by other authors (Fang and Wong, 2000; Gestel *et al.*, 2003; Pedro *et al.*, 2003). The decrease of microbial diversity in the composting mass could be due to the high temperature (Fang and Wong, 2000) and the bacterial viable counts are more for 10, 20, 30, 40 days compost samples compared to 50 and 60 days old compost samples.

**Table 9.** N fixers and P solubilizer population in drum compost of segregated and unsegregated urban solid waste at different days of interval

Methods	N fixers (cfu × 10 <sup>5</sup> g <sup>-1</sup> compost)				P solubilizers (cfu × 10 <sup>5</sup> g <sup>-1</sup> compost)			
	20	40	60	80	20	40	60	80
	Days							
S <sub>1</sub>	6.27	12.42	28.42	21.72	75.2	150.33	311.92	234.56
S <sub>2</sub>	5.25	11.34	25.3	19.85	62.73	120.53	297.3	225.23

## Conclusion

The results of the study clearly indicate that, the composting of segregated and unsegregated urban solid waste drum compost. Physico-chemical analysis of compost from the point of view moisture content, temperature, bulk density, pH, EC, organic carbon, C:N ratio, NPK, calcium, magnesium, and sulphur agreed with recommended standards, biochemical properties viz., cellulose, lignin, humic acid, fulvic acid, humus index and E<sub>4</sub>/E<sub>6</sub> ratio were increased at 80<sup>th</sup> days of segregated urban compost.

Biological study, concern the N fixer and P solubilizer population were increased up to 60 days and later reduce the population in last stages (80 days compost sample) and micro nutrients and heavy metals are like lead, nickel and chromium were found to be within the permissible limits of standards at all the maturations stages whereas cadmium was not detected. In this regard, drum composting system may be recommended for better method for recycling of municipal solid waste, which can be used as fertilizer or soil amendment.

## References

- Araujo ASF and Monteiro RTR 2005. Plant bioassays to assess toxicity of textile sludge compost. *Journal of Scientia Agricola* **62**(3): 286-290.
- Ayesha PA 2010. Bioconversion of municipal solid waste (MSW) and water hyacinth (WH) into organic manure by fungal consortium. *Journal of Sustainable Development.*, **3**(1): 91-97.
- Bermal MP, Paredes C, Sanchez-monedero MA and Cegarra J 1998. Maturity and stability parameters of composts prepared with a wide range of organic wastes. *Bioresource Technology* **63**(1): 91-99.
- Biotreat 2003. Interpretation of results report, National Food Biotechnological Centre, University College, Cork, Ireland.

- Bord Na Mona 2003. Compost testing and analysis Service-interpretation of results, available from Bordna Mona, Newbridge, Co. Kildare.
- Brinton WF 2003. Interpretation of Waste and Compost Tests. *Journal of the Woods End Research Laboratory* **1**(4): 1-6.
- Campbell AG, Folk RL and Tripepi RR 1997. Wood ash as an amendment in municipal sludge and yard composting processes. *Compost Science & Utilization* **5**(1): 62-73.
- Chefetz B, Hatcher PG, Hadar Y and Chen Y 1996. Chemical and biological characterization of organic matter during composting of municipal solid waste. *Journal of Environmental Quality* **25**: 776-785.
- Cortez J, Demard JM, Bottner P and Joucturmonlozer L 1996. Decomposition of Mediterranean leaf litters, a microcosms experiment investigating relationship between decomposition rate and litter quality. *Journal Soil Biology and Biochemistry* **28**(4): 443-452.
- Dimambro ME, Lillywhite RD and Rahn CR 2007. The physical, chemical and microbial characteristics of biodegradable municipal waste derived composts. *Compost Science and Utilization* **15**(4): 243-252.
- Elango D, Thinakaran N, Panneerselvam P and Sivanesan S 2009. Thermophilic composting of municipal solid waste. *Applied Energy* **86**(5): 663-668.
- Fang M, Wong MH and Wong JWC 2001. Digestion activity of thermophilic bacteria isolated from ash-amended sewage sludge compost. *Water Air Soil Pollution* **126** (1-2): 1-12.
- Garcia Gil JC, Plaza C, Soler-rovira P and Polo A 2000. Long-term effects of municipal solid waste compost application on soil enzyme activities and microbial biomass. *Journal Soil Biology and Biochemistry* **32**: 1907-1913.
- Gestel KV, Mergaert J, Swings J, Coosemans J and Ryckeboer J 2003. Bioremediation of diesel oil contaminated soil by composting with biowaste. *Environmental Pollution* **125**(3): 361-368.
- Han HS and Lee KD 2005. Phosphate and potassium solubilizing bacteria effect on mineral uptake, soil availability and growth of eggplant. *Journal of Agricultural Biological Science* **1**(2): 176-180.
- Hargreaves JC, Adl MS and Warman PR 2008. A review of the use of composted municipal solid waste in agriculture. *Journal of Agriculture, Ecosystems and Environment* **123**: 1-14.

- He X, Logan T and Traina S 1995. Physical and chemical characteristics of selected U.S municipal solid waste composts. *Journal of Environmental Quality* **24**: 543-552.
- Herrera F, Castillo JE, Chica AF and Lopez Bellido L 2008. Use of municipal solid waste as a growing medium in the nursery production of tomato shoots. *Bioresource Technology* **99**: 287-296.
- Iovieno P, Morra L, Leone A, Pagano L and Alfani A 2009. Effect of organic and mineral fertilizers on soil respiration and enzyme activities of two Mediterranean Horticultural soils. *Journal of Biology Fertility of Soils* **45**: 555-561.
- Jackson ML 1973. Soil chemical analysis. *Prentice Hall of India Pvt. Ltd.* New Delhi.
- Jadia CD and Fulekar MH 2008. Vermicomposting of vegetable waste: A bio physicochemical process based on hydro-operating bioreactor. *African Journal of Biotechnology* **7**:3723- 3730.
- Kaushik P and Garg VK 2003. Vermicomposting of mixed solid textile mill sludge and cow dung with the epigeic earthworm (*Eisenia foetida*). *Bioresource Technology*. **90**: 311-316.
- Larney FJ and Blackshow RE 2003. Weed seed viability in compost Beef cattle feedlot manure. *Journal of Environmental Quality* **32**: 1105-1113.
- Lugtenberg B and Kamilova F 2009. Plant growth-promoting rhizobacteria, Annual review of microbiology **63**: 541-556.
- Manju R, Ramanathan AL and Kuriakose T 2013. Characterization of municipal solid waste compost. *Journal of Environmental Quality* **28**: 1074-1082.
- Mondini C, Dell Abate MT, Leita L and Beneditti A 2003. An integrated chemical, thermal and microbiological approach to compost stability evaluation. *Journal of Environmental Quality*. **32**: 2379-2386.
- Murillo J and Cabrera, F 1997. Response of clover (*Trifolium fragiferum* cv Salina) to a heavy urban compost application. *Compost Science Utilization* **5**(4): 15-26.
- Mylavarapu RS and Zinati GM. 2009. Improvement of soil properties using compost for optimum parsley production in sandy soils. *Scientia Horticulturae* **120**(3): 426-430.
- Narkhede SD, Attarde SB and Ingle ST 2010. Combined aerobic composting of

municipal solid waste and sewage sludge. *Global Journal of Environmental Research* **4**(2): 109-112.

Nogales R, Gomez M and Gallarado Lara F 1985. Town refuse compost as a potential source of zinc to plants. In: *International conference heavy metals in the environment* **1**: 487-489.

Pedro MS, Haruta S, Nakamura K, Hazaka, Ishji, MM and Igarashi Y 2003. Isolation and characterization of predominant microorganisms during decomposition of waste materials in a field scale composter. *Journal of Bioscience and Bioengineering* **95**: 368-373.

Rangaswami G and Sadasivam KV 1989. Studies on the occurrence of *azotobacter* in rice cropping system. *Indian Society of Soil Science* **38**: 43-49.

Reddy VC, Shyamala Krishna, Anitha V and Sethu LC 2000. Combating solid wastes management-A fruitful strategy. *Centre for Environment Education Bangalore*.

Seema jilani 2007. Municipal solid waste composting and its assessment for reused in plant production. *Pakistan Journal of Biology* **39**(1): 271-277.

Shabani H, Peyvast AG, Olfati AJ and Kharrazi PR 2011. Effect of municipal solid waste compost on yield and quality of eggplant. *Comunicata Scientiae.*, **2**(2): 85-90.

Shekdar AV 1999. Municipal solid waste management-The Indian perspective. *Indian Association for Environment Management* **26**(2): 100-108.

Shivakumar 1999. Effect of farmyard manure, urban compost and NPK fertilizers on growth and yield of finger millet (*Eleusinecoracana* (L.) Gaertn). *M. Sc. (Agri.) thesis, University of Agricultural Sciences, Bangalore*.

Shivakumar BS, Thandaveswara and Chandarasekaran KD 2004. Solid waste leachate quality & its effects on soil properties. *Pollution Research* **23**(1): 179-182.

Stilwell and David E 1993. Evaluating the suitability of MSW compost as a soil amendment in the field grown tomatoes: Part B, Elemental analysis. *Compost Science Utilization* **1**(2): 23-33.

Summerella BA and Burges LW 1989. Decomposition and chemical composition of cereal straw. *Soil Biology and Biochemistry* **21**(4): 551-559.

Vaccarrino C, Lurto RBLO, Triposo MM, Belloceo E, Longana G and Patane R 1987. Effect of SO<sub>2</sub>, NaOH and Na<sub>2</sub>CO<sub>3</sub> pretreatment on the degradability and cellulose digestibility of grape mare. *Journal of Biology Wastes* **20**: 79-88.

Verdonack O 1988. Composts from organic materials substitutes for the usual horticultural substrate. *Journal of Biology Wastes* **26**: 325-330.

UNDER PEER REVIEW