

**Glioblastoma multiforme: molecular biology and updated
systematic review on natural extract and phytochemical
efficacy *in-vitro***

Abstract

Glioblastoma multiforme (GBM) is the most prevalent primary malignant central nervous system tumours (CNST). Current treatment consists of surgical resection and adjuvant chemoradiotherapy, the gold-standard agent being Temozolomide (TMZ). Despite optimal treatment, GBM has an abysmal associated prognosis of approximately 15 months. The disproportionately high morbidity and mortality necessitates studies which strive to increase knowledge on putative therapeutic agents to confirm or deny their possible use against GBM. Therefore, there is an urgent need for the development to obtain deep understanding of GBM molecular biology and upon which more effective therapeutic strategies may be developed.

Natural extracts and phytochemicals have shown promise as potential therapeutic agents against GBM. In this review the molecular biology of GBM and molecular factors which contribute to therapeutic resistance are discussed in depth. The mechanisms by which phytochemicals and natural extracts exhibit can inhibit GBM growth and proliferation are discussed. Moreover, statistically analysis demonstrated that natural extracts and phytochemicals may be superior to TMZ *in-vitro*.

This review demonstrates that phytochemicals have great potential as novel therapeutic agents against GBM. Further preclinical and clinical studies are needed to determine the optimal doses, routes of administration, and potential toxicities of these agents, but their unique molecular targets and low toxicity profiles make them attractive candidates for further investigation.

Keywords

Glioblastoma Multiforme, molecular biology, intracellular signalling, natural extracts, phytochemicals

Introduction

Gliomas are among the most prevalent central nervous system tumours (CNSTs), and are classified according to their presumed cell of origin. These primarily include tumours stemming from astrocytes (astrocytoma, anaplastic astrocytoma and glioblastoma), oligodendrogliomas, mixed gliomas and ependymomas (1). The most incident and aggressive glioma is glioblastoma multiforme (GBM), which can be distinguished from other gliomas since GBM tumours express necrosis and/or microvascular proliferation coupled with rapid, infiltrating growth. GBM forms highly heterogeneous tumours, with complex molecular biology (2–5). Despite decades of research and current optimal treatment, patients' prognosis is still abysmal. Research striving to discover putative therapeutic approach against GBM has veered towards assessing the efficacy of naturally derived compounds or extracts (6). The aim of this review is to give an updated and concise overview of recent literature which discuss the classification, epidemiology, molecular biology, and current treatment approaches of GBM.

Method

This systematic review was generated according to Systematic Review and Meta-analyses (PRISMA) checklist 2020 (1).

Study identification and selection

PubMed, Google Scholar, Science Direct and Semantic Scholar databases were searched for relevant articles published until week 36-2022. Combinations of free text keywords and

MESH terms (where appropriate), identified through a preliminary literature search, were used to develop database specific search strategy as outlined in **S-Table 1**. Grey literature was not explored, since only articles published in reputable peer-reviewed journals were considered. Original studies which discussed the anti-cancer properties and clearly depicted the IC50 of derived from natural sources against glioblastoma were retrieved from the respective database and stored digitally in dedicated files.

S-Table 1: Database specific search strategy.

PubMed	Google Scholar	Science Direct	Semantic Scholar
(((phytochemical[MeSH Terms]) OR (phytochemical)) OR ((natural compound[MeSH Terms]) OR (natural compound)) OR ((extract[MeSH Terms]) OR (extract))) AND ((glioblastoma[MeSH Terms]) OR (glioblastoma multiforme) OR (glioblastoma multiforme[MeSH Terms]))	allintitle: "glioblastoma" OR "glioblastoma multiforme" AND "phytochemical" OR "natural compound" OR "extract" biology"	Title, abstract or author-specified keywords: ("glioblastoma" OR "glioblastoma multiforme") AND ("phytochemical" OR "natural compound" OR "extract")	Title: ("phytochemical" OR "natural compound" OR "extract") AND ("glioblastoma" OR "glioblastoma multiforme")

Data extraction and analysis

Data regarding cell lines, IC50 and observed intracellular signalling pathways from studies identified through the systematic review were extracted using data collection tables. Descriptive and inferential statistical analysis (Mann Whitney-U testing) was conducted where appropriate using JASP Team (2021) JASP (Version 0.16). The significance level was set at $p < 0.05$ for all analyses.

Literature search

874 tentative studies were identified, with 31 potential records being duplicates. 504 studies were excluded following title and abstract screening using the pre-defined inclusion criteria. Thus, 309 reports were sought for retrieval and their full text was assessed in detail for eligibility. Among these, 42 study could not be retrieved and 231 studies were excluded following full-text review resulting in a total of 36 studies included in this systematic review (2–37) (S-Figure 1).

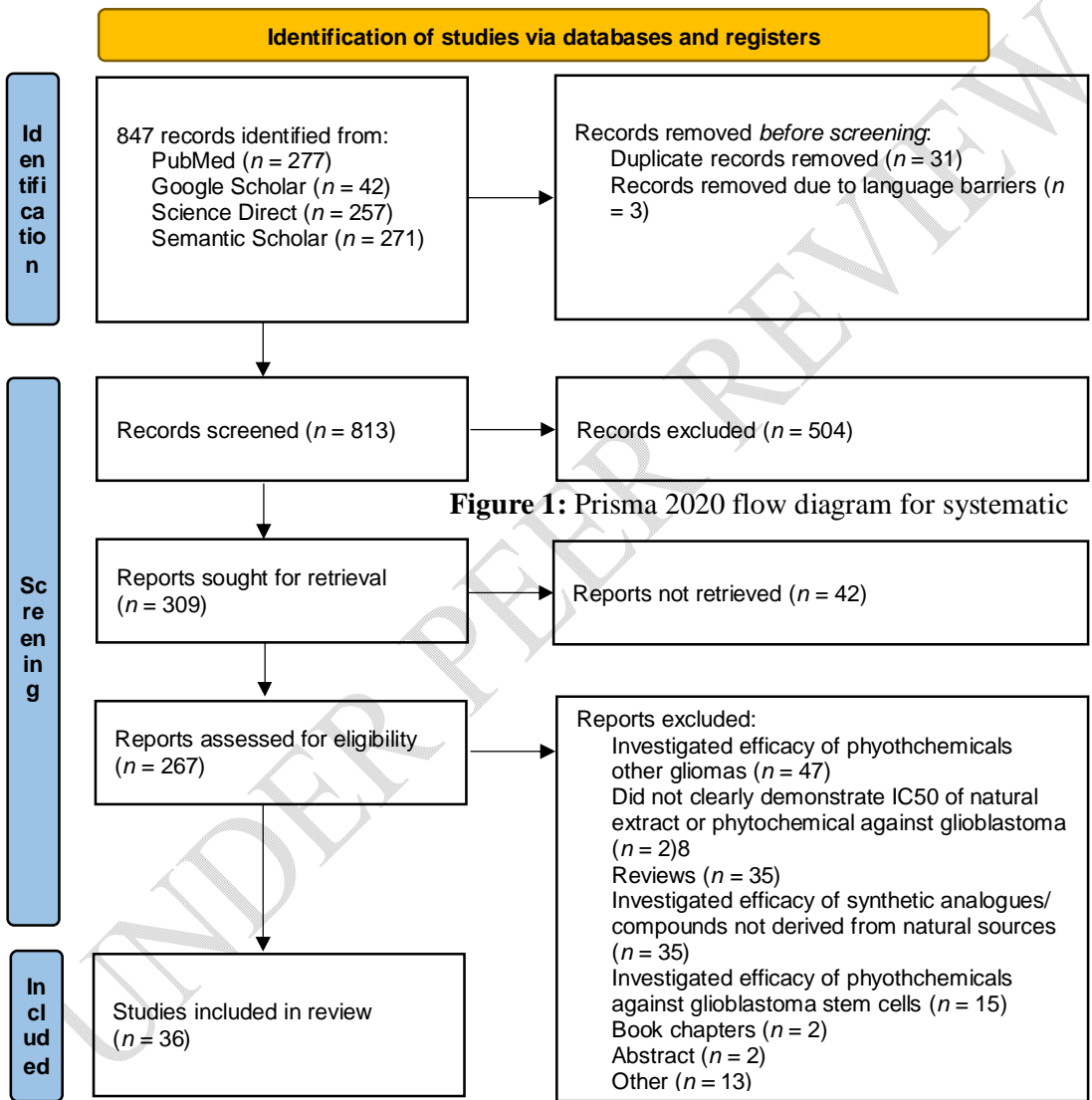


Figure 1: Prisma 2020 flow diagram for systematic

literature search, adapted from Page *et al.* (2021)

S-Figure 1: Identification of studies via databases and registers

Prisma Checklist

Section/ topic	No.	Checklist item	Location(s) Reported
INFORMATION SOURCES AND METHODS			
Database name	1	Name each individual database searched, stating the platform for each.	2
Multi-database searching	2	If databases were searched simultaneously on a single platform, state the name of the platform, listing all the databases searched.	2
Study registries	3	List any study registries searched.	N/A
Online resources and browsing	4	Describe any online or print source purposefully searched or browsed (e.g., tables of contents, print conference proceedings, web sites), and how this was done.	2
Citation searching	5	Indicate whether cited references or citing references were examined, and describe any methods used for locating cited/citing references (e.g., browsing reference lists, using a citation index, setting up email alerts for references citing included studies).	N/A
Contacts	6	Indicate whether additional studies or data were sought by contacting authors, experts, manufacturers, or others.	N/A
Other methods	7	Describe any additional information sources or search methods used.	N/A
SEARCH STRATEGIES			
Full search strategies	8	Include the search strategies for each database and information source, copied and pasted exactly as run.	2
Limits and restrictions	9	Specify that no limits were used, or describe any limits or restrictions applied to a search (e.g., date or time period, language, study design) and provide justification for their use.	2
Search filters	10	Indicate whether published search filters were used (as originally designed or modified), and if so, cite the filter(s) used.	2
Prior work	11	Indicate when search strategies from other literature reviews were adapted or reused for a substantive part or all of the search, citing the previous review(s).	N/A
Updates	12	Report the methods used to update search(es) (e/g, rerunning search, email alerts).	N/A
Dates of searches	13	For each search strategy, provide the date when the last search occurred.	2
PEER REVIEW			
Peer review	14	Describe any search peer review process.	N/A
MANAGING RECORDS			
Total Records	15	Document the total number of records identified from each database and other information sources.	2-3
Deduplication	16	Describe the processes and any software used to deduplicate records from multiple database searches and other information sources.	3

Classification and epidemiology

Since the turn of the 21st century, frameworks for classifying GBM have been continuously revised to keep up with novel insights in GBM molecular biology (**Figure 1**). The World Health Organization (WHO) CNST classification framework has established itself as the international standard for glioma nomenclature and diagnosis (Lee et al., 2018). GBM is classified as an 'adult-type diffuse glioma' in the WHO 2021 CNST classification, which must occur as a WHO grade-IV isocitrate dehydrogenase (IDH)-wildtype glioma *de-novo*. IDH-mutant WHO grade-IV gliomas, often presenting as secondary glioblastoma stemming from WHO grade II or III astrocytoma, have historically been considered as glioblastoma, since mutant IDH makes the tumours more amenable to treatment. However, such tumours have been reclassified as WHO grade IV astrocytoma in the WHO 2021 CNSTs framework (1). This reclassification invariably questions the validity of glioblastoma research which do not specify the IDH-status of grade-IV gliomas being tested, while likely invalidating prior epidemiological research which does not include the IDH-status within patient demographic data. This necessitates clear guidelines with regards to protocols which should be followed in pre-clinical research in order to standardise reporting and gain a clear understanding of the actual global epidemiological trends of GBM.

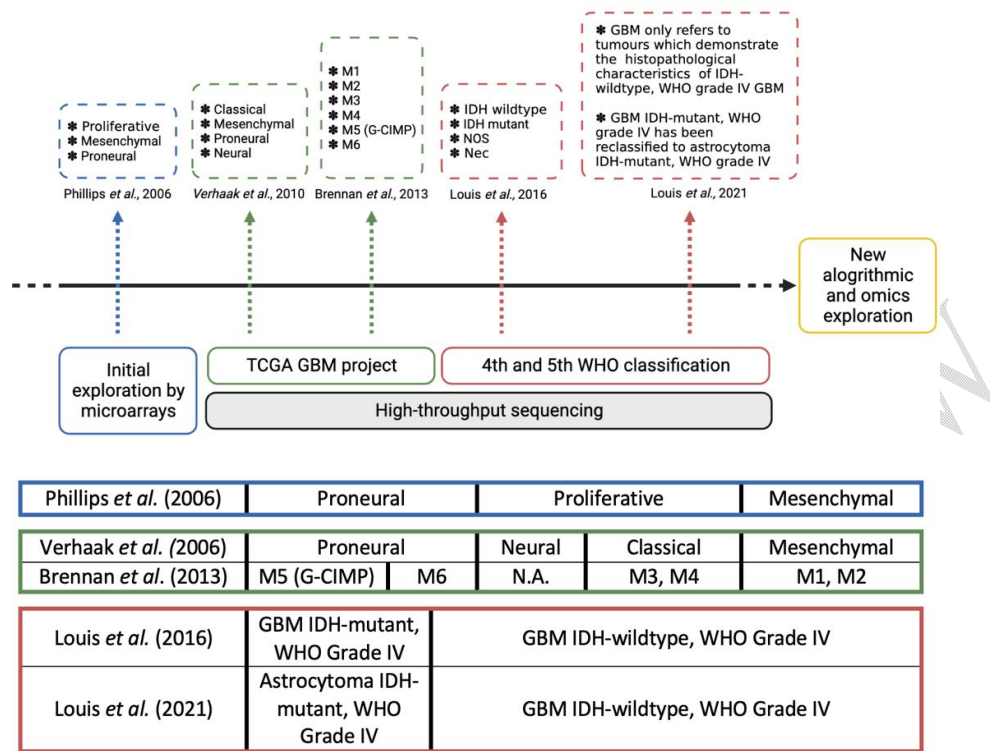


Figure 1: Glioblastoma multiforme classification systems. Advances in molecular biology have led to the development of several classification systems for glioblastoma (GBM), with initial microarray analysis identifying three subgroups: proliferative, mesenchymal and proneural (7). High-throughput sequencing has since updated this classification, splitting the proliferative subgroup into neural and classical groups (8). This classification system was further stratified subtypes based on methylation signatures (9). The fourth World Health Organization (WHO) classification system for gliomas is based on variable isocitrate dehydrogenase (IDH) expression, identifying four neoplasms including GBM IDH-wildtype, GBM IDH-mutant, GBM not-otherwise-specified, and not-elsewhere-classified (10). In 2021, WHO updated its classification of central nervous system tumors, reclassifying GBM IDH-mutant as astrocytoma-IDH-mutant and reserving the term GBM only for IDH-wildtype grade-IV *de-novo* tumors (1). Created in Biorender.com.

GBM, as reported prior to the WHO 2021 CNS classification, is the most common primary CNS, accounting for 14% of all CNSs, and nearly half of all malignant CNSs, with an

estimated incidence of 3.23 per 100,000 population (11). GBM is most commonly diagnosed in adults over the age of 65, however this is known to vary between studies (12). GBM has an exceptionally poor prognosis regardless of age, with the median survival in optimally treated patients being less than 15 months, and the 10-year survival estimated at 1% (13). Recent reports show that the annual incidence of GBM is increasing (14,15), adding to the disease's already high burden. As a result, there is an urgent need to understand GBM's molecular biology and investigate novel putative therapeutic strategies to improve patient survival.

Glioblastoma multiforme molecular biology

Predominant genetic alterations

Expression of IDH-wildtype is the defining molecular feature of GBM (1). IDH-wildtype promotes tumor progression and resistance to cell death by scavenging reactive oxygen species (ROS) and producing fatty acids (FAs) (16). Furthermore, GBM tumors frequently show epidermal growth factor receptor (EGFR) and mouse double minute 2 (MDM2) homolog amplification or mutation, telomerase reverse transcriptase (TERT) promoter mutations, chromosome 7 gain, and loss of heterozygosity in the long arm of chromosome 10 (q10) (17).

Altered metabolism: focus on the Warburg effect

Genetic mutations or hypoxia promote metabolic remodelling in GBM by shifting cellular energy metabolism from oxidative phosphorylation to glycolysis (18). The switch to glycolysis allows GBM cells to meet the energy demands of proliferation, invasion, while

adapting to the surrounding microenvironment (19) and has been linked to a poorer prognosis (20,21).

Pyruvate kinase (PK) is essential for glycolysis because it catalyses the final rate-limiting step of producing pyruvate and generating ATP (22). Despite not being expressed in the normal human adult brain (23), the M2 isoform (PKM2) is significantly expressed in GBM tumours consequent to PKM1 to PKM2 isoform switching (24,25). Increased PKM2 expression is associated with increased glycolytic turnover, tumour growth regulation, and maintenance of mitochondrial function (24,26–28). Furthermore, HIF-1 α directly targets PKM2 to promote tumor progression (29) by suppressing mitochondrial function via reduced ROS production (24,28,30). This results in a positive feedback loop that amplifies HIF-1 α expression (29). As a result, PKM2 is a critical promoter of the Warburg effect and has been proposed as a potential biomarker for the metabolic status of GBM cells (31).

Oncogenic receptor tyrosine kinase signalling

Signaling by receptor tyrosine kinases (RTKs) is involved in cell invasion, proliferation, and angiogenesis. As a result, RTK signaling can be considered oncogenic and serve as potential therapeutic targets (32). EGFR signalling (PI3K/AKT/mTOR and Ras/MAPK/ERK pathways) (**Figure 2**), are the most frequently dysregulated RKT signaling cascades in GBM oncogenesis (5,33).

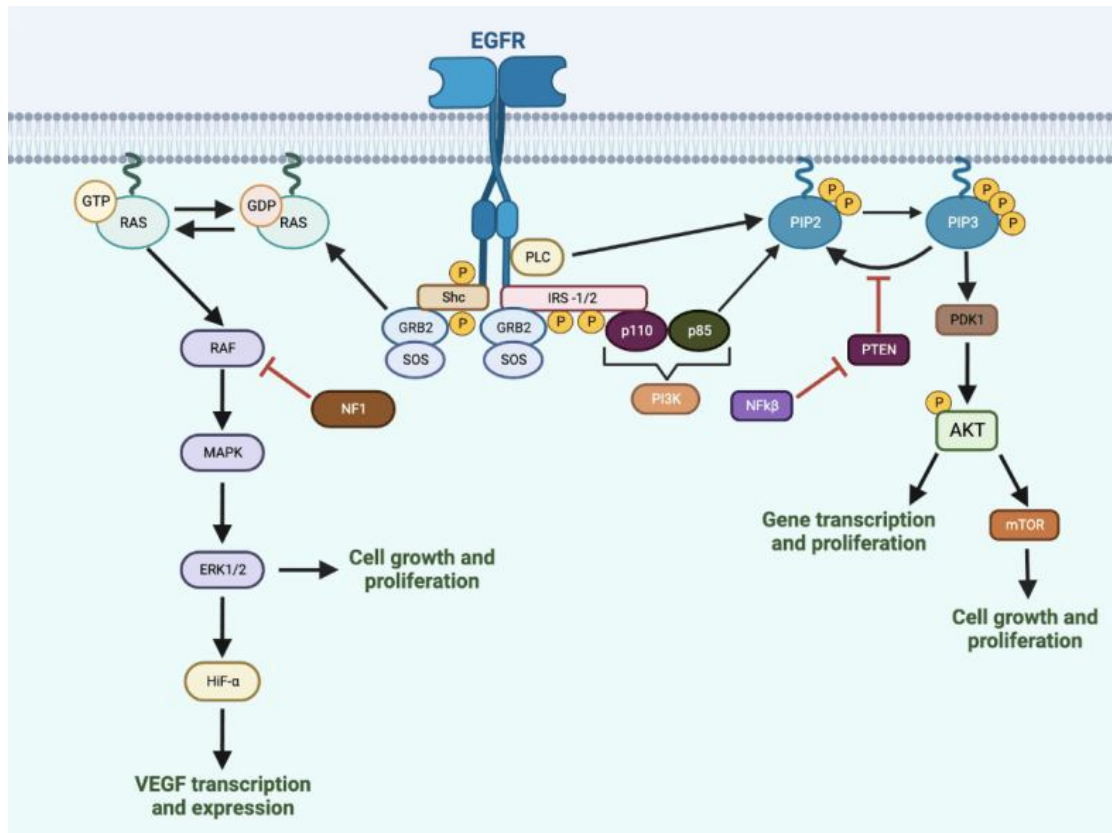


Figure 2: Frequently altered receptor tyrosine kinase signaling cascades in GBM oncogenesis. The PI3K/Akt/mTOR and Ras/Raf/ERK1/2 pathways are the most frequently altered RTK signalling in GBM (5,33). PI3K/Akt/mTOR signalling regulates cell migration and invasion and also contributes to the regulation of apoptosis. Activation of the pathway occurs through RTK phosphorylation, which produces PIP3 and mediates the activation of Akt. PTEN acts as a negative regulator of this pathway. Active Akt can activate mTOR and inhibit pro-apoptotic proteins (33–35). Ras/Raf/ERK1/2 signalling regulates cell proliferation, migration, and survival. The activation of Raf is regulated by NF1, which acts as a negative regulator of the pathway (36,37). Created in Biorender.com.

PI3K/Akt/mTOR signalling

The PI3K/Akt/mTOR pathway primarily regulates cell migration and is often constitutively activated in GBM oncogenesis. This pathway is altered in roughly 70% of GBM tumours, either through EGFR amplification or loss of PTEN function (38). EGFR overexpression is

found in approximately 35% of tumors, and its amplification leads to increased activation of the PI3K pathway. EGFRvIII, a ligand-independent mutant, is also present in approximately 40% of GBM tumors (39). Moreover, 40% of all GBM tumors also demonstrate loss of function PTEN mutations (40), resulting in loss of cascade regulation and subsequent upregulated PI3K/Akt/mTOR signaling leading to uncontrolled cell proliferation (33).

Ras/Raf/ERK1/2 signalling

Ras/Raf/ERK1/2 signaling occurs downstream of EGFR activation to regulate cell proliferation, migration, and survival activity, complementary to the PI3K/Akt/mTOR. Ras/Raf/ERK1/2 pathway mutations are uncommon in GBM, present in approximately 2% of all GBM tumors. Notwithstanding, increased RAS activity is frequently observed, suggesting the importance of this pathway in the development of GBM (41,42). Furthermore, 18% of GBM patients have NF1 mutations or deletions, allowing constitutive activation of this pathway and promoting uncontrolled oncogenesis (9,41).

Cell death signalling in glioblastoma multiforme.

Apoptosis

GBM cells exhibit intrinsic apoptosis deregulation (43), which has been proposed as one of the mechanisms conferring therapeutic resistance due to upregulation of anti-apoptotic proteins and downregulation of pro-apoptotic proteins, favoring cell survival (44). Anti-apoptotic Bcl-2 or Bcl-xL overexpression in GBM cell lines promotes migration and tumor invasion via apoptosis resistance (45). Similarly, resistant GBM exhibits Bcl-2 family proteins overexpression and downregulation of pro-apoptotic proteins Bax and Bak (**Figure 3**), which has been linked to a worse clinical outcome (46–49). As a result, increased Bax

expression is likely to confer a survival advantage, whereas increased Bcl-2 expression is associated with a poorer prognosis since it inhibits the release of mitochondrial cytochrome-C and the formation of the apoptosome (50). Increased procaspase-3 expression was linked to increased chemotherapy sensitivity in cells and longer progression-free survival (PFS) in patients (51). Similarly procaspase-7 and -8 dysregulation in human GBM tissue biopsies was suggested to dysregulate the formation of the death inducing signal complex (DISC) (**Figure 3**), and thus downstream caspase activity, leading to decreased apoptosis (52). Together, downregulation of apoptotic proteins may confer a patient survival advantage (51,52).

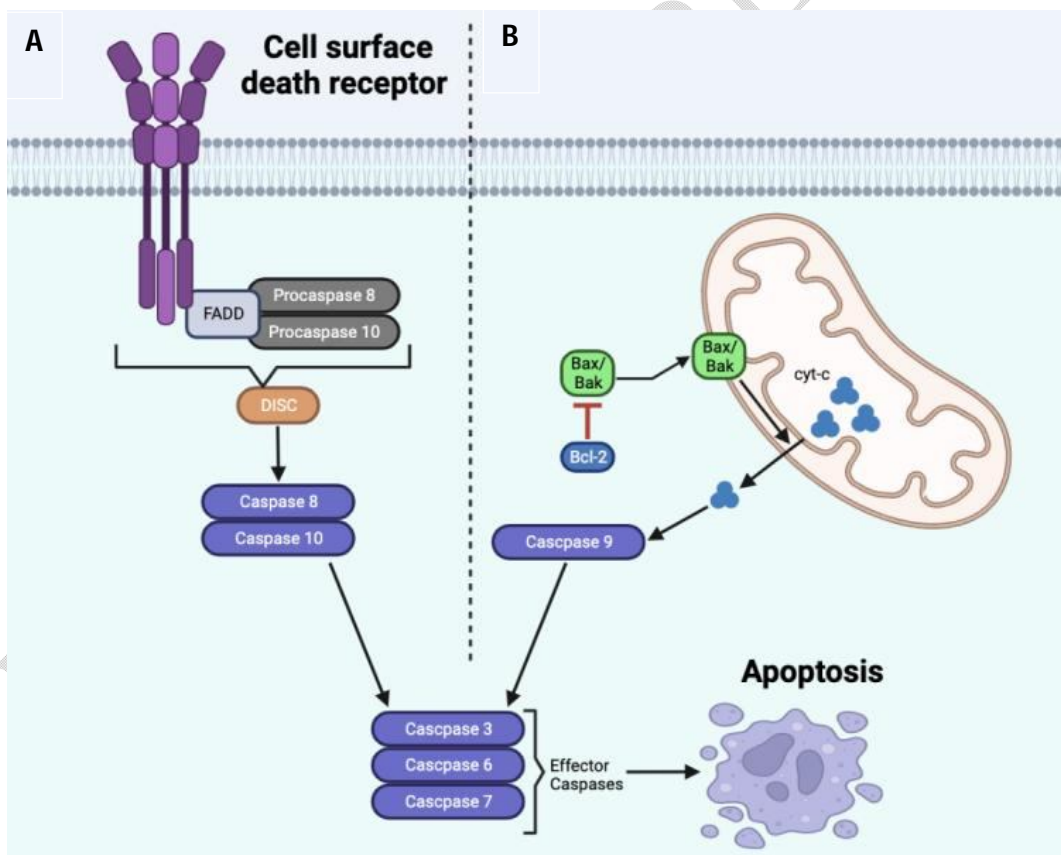


Figure 3: Extrinsic and intrinsic apoptosis. (A) The extrinsic apoptotic pathway is triggered by the docking of extracellular pro-apoptotic ligands on cell surface death receptors, forming a death-inducing signaling complex

(DISC). The DISC autoactivates procaspases by dimerization, which yields the active form of the proteins and triggers apoptosis. Procaspase-8 is autolytically cleaved to caspase-8, which activates effector caspases until cell death occurs (50,53). (B) The intrinsic apoptotic pathway is activated by severe cell stress, and is independent of death receptors. Pro-apoptotic Bcl-2 family proteins located on the inner mitochondrial membrane can either promote or inhibit cell death. Bcl-2 can promote cell death by promoting the release of other pro-apoptotic proteins such as cytochrome-C (cyt-c), or it can prevent cell death by inhibiting the release of cyt-c via pro-apoptotic proteins Bax and Bak (54). Cyt-c then forms an apoptosome with Apaf-1 and procaspase-9, which activates effector caspases to execute apoptosis (43). The release of cyt-c also disrupts the electron transport chain and increases the synthesis of ROS (55). Created in Biorender.com.

Autophagy

Macroautophagy is a vital homeostatic in GBM, as it ensures the bulk removal of defective or no longer needed cellular components, characterised by the formation of autophagosomes (**Figure 4**). Hypoxia and chemotherapy are the most prominent external stimuli promoting autophagy in GBM. Hypoxia causes starvation, leading to BECN1 phosphorylation activating autophagy via the HIF-1 α /BECN1 signaling pathway. This acts to increasing nutrient and energy availability through the degradation of redundant cellular components (56). Baseline autophagy has been found to be increased in hypoxic areas of GBM tumors with cytosolic BECN1 overexpression (57). This demonstrates the critical adaptive role of GBM survival (58).

Poor prognosis and aggressive clinical behavior of GBM tumors in response to standard of care therapy have been linked to upregulated autophagy, conferring a survival advantage to the pathway (59–62). Despite this, numerous studies have demonstrated autophagy's anti-tumor function. Inducing excessive autophagy results in large-scale autophagic vacuolisation in the absence of chromatin condensation. Notwithstanding, it is still unclear whether the

activation of large-scale autophagy contributes to cell death as a result of therapy or represents a last ditch attempt at survival (63–66).

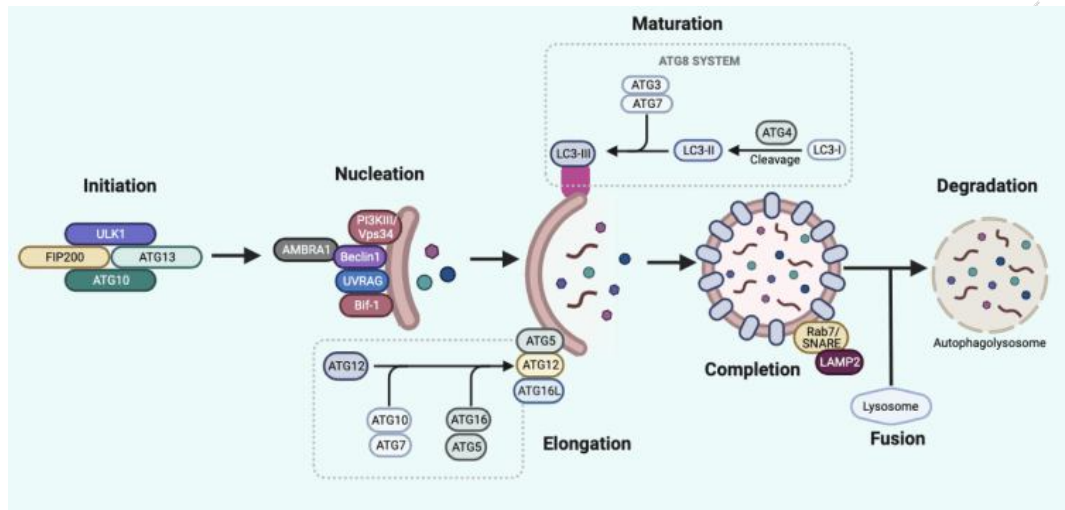


Figure 4: Autophagosome formation . This process can be initiated by various stimuli and requires the inhibition of mTOR1, which negatively regulates autophagy (50). The activation of Unc-51-Like kinase 1/2 (ULK1/ULK2) phosphorylates mATG13 and FIP200, leading to autophagosome formation. Autophagy gating regulator BECN1 binds to different proteins to either promote or inhibit autophagy. The PI3KC3 protein is the master regulator of autophagy and controls its function through two complexes. Autophagosome maturation occurs in two stages, involving Atg8-PE and Atg5-Atg12-Atg16 protein systems. LC3/Atg8 is cleaved to form LC3-I, which is then conjugated with PE by Atg7 and Atg3 to form LC3-II, marking autophagy induction. Autophagosome fuses with lysosomes to degrade and recycle cellular components (67–76). Created in Biorender.com.

Oxidative stress

The imbalance between ROS and the cells' ability to detoxify reactive intermediates or repair subsequent oxidative damage is collectively referred to as oxidative stress (77). The presence of ROS activates a number of transcription factors in GBM, most notably nuclear factor erythroid 2-related factor 2 (Nrf2) and HIF-1 α (78). When oxidative stress is detected, Nrf2 dissociates from its inhibitor and translocates to the nucleus, where it interacts with antioxidant response elements (AREs) to regulate antioxidant gene expression (79). Nrf2 signaling can mediate the role of HIF-1 α regulatory signaling in response to oxidative stress. Moreover, HIF-1 α is upregulated in tumors with high Nrf2 activity since Nrf2 binds to the ARE responsible for HIF-1 α transcription (80).

Endoplasmic reticulum stress

A buildup of unfolded or misfolded proteins in the ER causes ER stress and activates the unfolded protein response (UPR) to ensure proper protein folding (81). Exogenous stress may also promote ER stress, as can the accumulation of harmful metabolites, particularly ROS, which affect protein and lipid synthesis. To protect cell proliferation, ER stress can induce the expression of ER molecular chaperones (81). However, ER stress can also cause endogenous cell death on its own (82). Continuous UPR in response to cell stress may protect against GBM oncogenesis by inducing cell death via ER stress, preventing the continuous synthesis of misfolded protein (83). Conversely, the induction of ER stress by exogenous agents may result in widespread cell death, making it another potential therapeutic target (84).

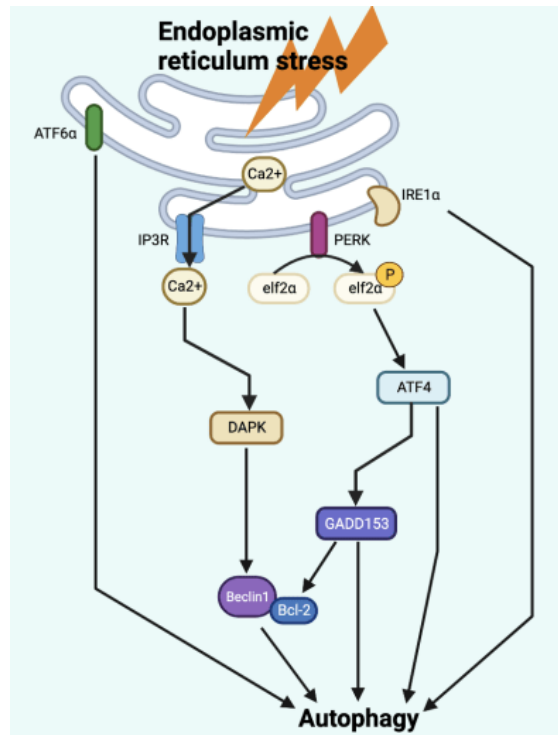


Figure 5: Endoplasmic reticulum stress as a pathway resulting in cell death. Endoplasmic reticulum (ER) stress can also independently induce endogenous cell apoptosis and ultimately affect cell fate, such as adaptation, injury or apoptosis (82). Under continuous ER stress the protein kinase R-like endoplasmic reticulum kinase (PERK), inositol-requiring enzyme 1 (IRE1) and activating transcription factor 6 (ATF6 α) signaling pathways are initiated to transduce the downstream autophagic pathways (85,86), the latter being recognised as a marker for ER stress (87,88). Created in Biorender.com.

Crosstalk between predominant glioblastoma multiforme intracellular signalling pathways

In GBM, apoptosis and autophagy are intricately linked (50). BECN1 regulation by apoptotic components determines whether the autophagic process is inhibited or activated, depending on intra- and extracellular conditions (89). Similarly, Atg proteins have been implicated in the regulation of apoptosis (90–92) (**Figure 6**).

The regulation of autophagy by PI3K/Akt/mTOR signaling is poorly understood (93), with the majority of evidence stemming from autophagy observed after administration of Akt/mTOR dual inhibitors. Upregulated Akt in GBM induces the upregulation of the protooncogene MDM2, inhibiting Bad downstream. Thus, upregulated PI3K/Akt/mTOR inhibits apoptosis (94). Similarly, when nutrients are abundant, mTOR complex I (mTORC1) activation inhibits autophagy, whereas under conditions for starvation AMP-activated protein kinase (AMPK) induces autophagy by inhibiting mTORC1 (94). **(Figure 6)**

Oncogenic EGFR signalling increases transcriptional HIF-1 α expression, increasing the rate of cellular glucose utilization (95). PTEN loss in GBM increases HIF-1 α transcription and unregulated PI3K/Akt/mTOR activity (96). Similarly, EGFR overexpression or the presence of EGFRvIII causes constitutive signalling, which increases HIF-1 α expression (97). Upregulated ERK1/2 also phosphorylates PKM2, causing its translocation to the nucleus, where it upregulates lactate dehydrogenase A (LDHA) and glucose transporter 1 (GLUT1) expression, contributing to the metabolic shift toward glycolysis (98).

Hypoxia also promotes the Warburg effect, resulting in similar HIF-1 α upregulation (99). This reduces mitochondrial respiration, which reduces ROS leakage from the ETC and confers tumor survival. Increased PKM2 expression is also associated with a reduction in ROS production (100). Conversely, PKM2 overexpression is linked to increased ROS production (101–103), most likely due to an increase in mitochondrial membrane potential (104).

The interaction between PKM2 and ROS may also make cells more sensitive to ROS (105). PKM2 regulates HIF-1 α activity by increasing its binding to hypoxia response elements (HREs), resulting in increased HIF-1 α target gene expression. This increases the expression of anti-apoptotic Bcl-2 family members, which helps to prevent cell apoptosis (33). PKM2

translocation to the mitochondria also interacts with and phosphorylates Bcl-2, inhibiting ROS-induced apoptosis (106) **(Figure 6)**.

Hypoxia can cause apoptosis directly through ER stress or indirectly through ROS production (107). Hypoxia increases the expression of the ER stress protein ATF6, which inhibits C/EBP Homologous Protein (GADD153), which then inhibits Bcl-2 family proteins and translocates the pro-apoptotic molecule Bax from the cytosol to the mitochondria. As a result, the intrinsic apoptotic pathway is activated (104). Hypoxia also causes cell death through acid stress since it causes an increase in lactate production via anaerobic glycolysis. Acidic stress can contribute to ER stress and directly initiate apoptosis via caspase activation (108–110)

As a consequence of hypoxia, GBM cells also undergo physiological angiogenesis to ensure a sufficient supply of oxygen and nutrients (111). Hence, hypoxic induction of angiogenesis enables GBM to survive under adverse conditions **(Figure 6)**.

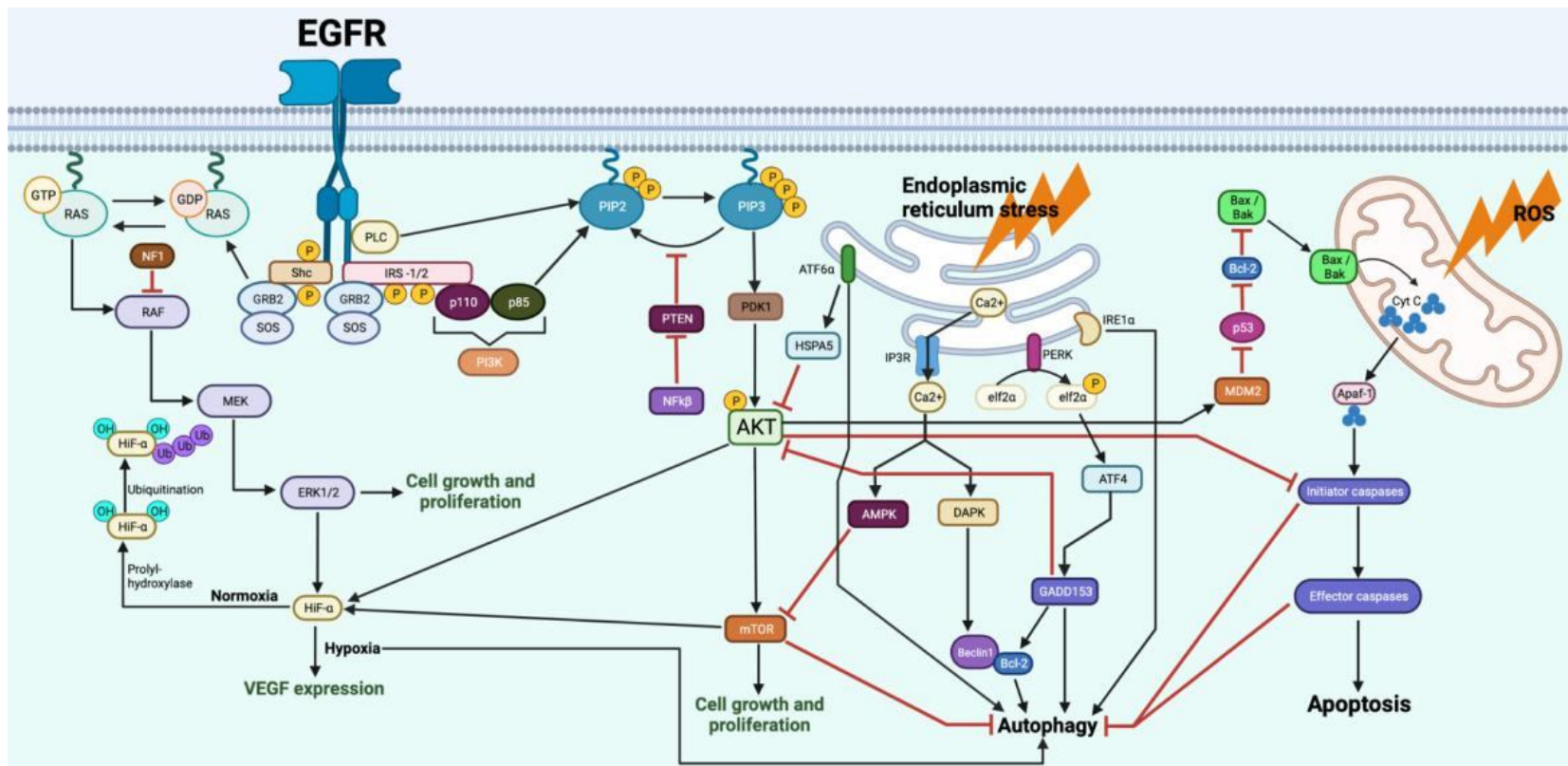


Figure 6: Intracellular cascade crosstalk in glioblastoma multiforme molecular biology.

Current standard of care against glioblastoma multiforme

The gold standard treatment for GBM IDH-wildtype WHO grade IV involves maximal safe resection (MSR), followed by concurrent chemoradiotherapy, which includes TMZ combined with fractionated radiotherapy, and subsequent maintenance TMZ administration (112) (**Figure 7**) (Stupp et al., 2005). TMZ is an orally active alkylating agent, the efficacy of which is determined by the drug's ability to alkylate/methylate DNA, most commonly at the O⁶ position of guanine residues (112). For recurrent GBM, resection followed by chemoradiotherapy is also recommended (**Figure7**), where chemotherapy may also include lomustine (CCNU) and carmustine (BCNU), as well as anti-angiogenic targeted antibody therapy bevacizumab (BVZ) (113) (**Table1**).

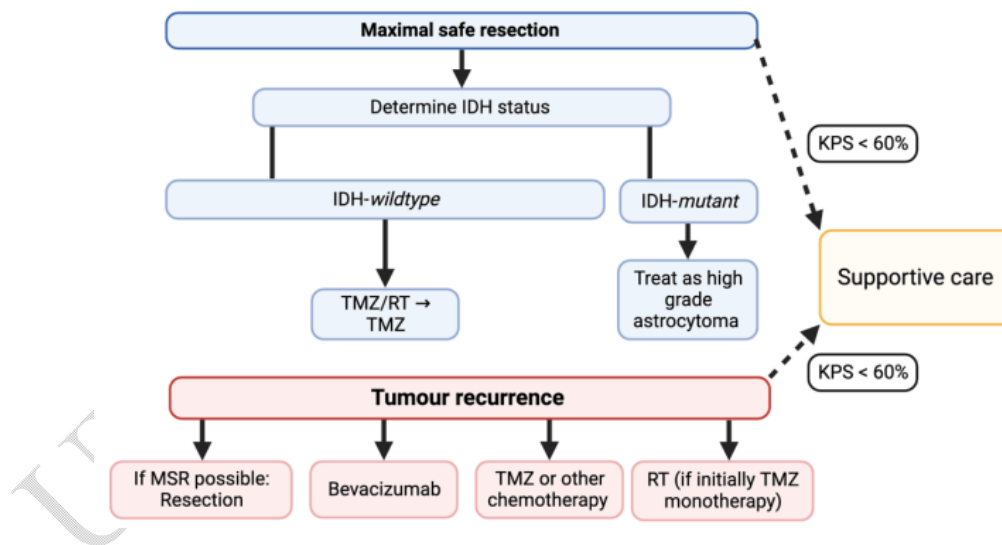


Figure 7: Current treatment pathway for glioblastoma multiforme. Adapted from Weller *et al.* (2019).

Table 1: Approved treatments used routinely against glioblastoma multiforme (114,115).

	Approved for	Target molecule/ cellular process	Overall survival (months)	Progression-free-survival at 6 months	Complications	Notes
Temozolomide (TMZ)	All GBM	Non-specific alkylating agent which induces mismatch repair in DNA by methylating guanine at the O ⁶ position	14.60 – 16.10	53.90%	Haematologic toxicity (16.00%); thrombocytopenia (12.00%); neutropenia (7.00%) and leukopenia (7.00%)	Standard of care
Carmustine (BCNU)	Recurrent GBM	Non-specific alkylating agent which causes DNA and RNA crosslinking in dividing cells, also binds to, and modifies glutathione reductase	11.75	/	Pulmonary toxicity (<30.00%), ocular toxicity (>10.00%) and bone marrow suppression (>10.00%)	No benefit compared to radiotherapy alone
Lomustine	Recurrent	Non-specific alkylating	11.50	/	Haematologic toxicity (49.70%)	No benefit

(CCNU)	GBM	agent which causes DNA and RNA crosslinking in dividing cells				compared to radiotherapy alone
Bevacizumab (BVZ)	Recurrent GBM	Therapeutic antibody which binds and inhibits VEGF protein	9.30 (Recurrent GBM)	36% (recurrent)	Hypertension (5.50 – 11.40%), thromboembolic events (3.20 – 11.90%), gastrointestinal perforation (1.50 – 5.40%), cerebral bleeding (2.00 – 5.30%) and proteinuria (2.70 – 11.40%)	Used to treat radiation necrosis and symptomatic oedema

UNDER PEER REVIEW

Molecular characteristics of Glioblastoma multiforme which confer therapeutic resistance

GBM demonstrates inter- and intra-tumor heterogeneity, as well as functional and molecular heterogeneity (116), which has been linked to a decrease in patient survival (117). The presence of stem cells and clonal evolution are the most widely accepted paradigms which attempt to explain GBM heterogeneity. GBM stem cells (GSC) are intratumorally proliferating and differentiating cells that are responsible for the initiation and maintenance of tumors after treatment (118). On the other hand, the clonal evolution theory suggests that successive cellular mutations result in clonal outgrowths that proliferate in response to specific stressors such as acidosis, hypoxia, and cytotoxic treatment. Epigenomic changes may also confer advantageous traits to tumor subpopulations, resulting in the faster formation of tumors (119).

Various subtypes of GBM with distinct molecular profiles coexist within the same tumour and exhibit differential therapeutic responses (120), making it extremely difficult to identify appropriate therapy (121). Cells within the same tumour exhibit differential gene expression, resulting in different intratumorally oncogenic signalling, proliferation, and stress response mechanisms (122). Moreover hypermutation, thought originate from *de-novo* pathways, attributed to constitutional defects in DNA polymerase and pathways involving mismatch repair (MMR) genes. These pathways are frequently the result of alkylating agent treatment (123) but hypermutations can also occur as a result of GSCs (121).

Resistance to Temozolomide

The median overall survival for GBM patients receiving optimal TMZ treatment is still around 15 months (115,124). This low efficacy could be attributed to the emergence of drug-resistant phenotypes or intrinsic TMZ resistance (125,126). Intrinsic TMZ resistance occurs due to the presence of already methylated guanine residues, whereas acquired resistance occurs as a result of DNA damage and tumour cell death activating the PI3K/Akt/mTOR pathway (127). Furthermore, TMZ exhibits indiscriminate cytotoxicity, resulting in significant side effects, complicating the drug's application against GBM (128). As a result, it is critical to continue working toward the development of novel treatments with increased efficacy and lower toxicity in order to overcome GBM chemotherapeutic resistance.

Natural extract and phytochemical efficacy against glioblastoma multiforme *in-vitro*

Due to high therapeutic resistance and poor prognosis with optimum treatment, the ongoing search for potential treatments against GBM has turned to investigating the use of natural substances as standalone chemotherapeutic medicines or as chemotherapeutic adjuvants. Natural substances offer a wide range of commonly available, affordable biologically active chemicals, some of which have shown promising cytotoxic effects on GBM cells (129,130).

Studies identified through systematic review synthesised following PRISMA 2020 guidelines (**Supplementary material A**) demonstrated that extracts against GBM exhibit a broad spectrum of cytotoxicities with non-specific action mechanisms (**Table 2**). Additionally, it is unknown which specific bioactive molecule/s in the extract are responsible for the anti-cancer properties. When compared to extracts, known phytochemicals derived from natural sources had greater efficacy against GBM *in-vitro* (**Table 3**), and studies were able to propose distinct mechanisms of action of these biomolecules, which may suggest greater specificity against GBM (131–135).

Table 2: Natural extracts assessed against glioblastoma multiforme *in-vitro*

Extract	Cell lines	Concentration of α -solanine which achieved IC50			Mode of action	Reference
		24 hours	48 hours	72 hours		
<i>Rhazya stricta</i> and <i>Zingiber officinale</i> crude alkaloid extract	U251	200.00 μ g/ml	135 μ g/ml	80.00 μ g/ml	<ul style="list-style-type: none"> • Induction of apoptosis by the intrinsic pathway • Increases expression of p53, p21 and NOXA 	(136)
<i>Rhazya stricta</i> and <i>Zingiber officinale</i> flavonoid extract		150.00 μ g/ml	115.00 μ g/ml	75.00 μ g/ml		
<i>Solanum lycocarpum</i> fruit extract	MO59J	18.26 μ g/ml	/	/	/	(137)
	U343MG	20.04 μ g/ml	/	/		
	U251	23.58 μ g/ml	/	/		
Brazilian red propolis extract	SF295	34.27 μ g/ml	/	/	<ul style="list-style-type: none"> • Interferes with mitosis by inducing apoptosis 	(138)
Abutilon indicum extract	U87MG	/	/	42.2 μ M	/	(139)
<i>Cedrus atlantica</i> extract	DBTRG-05MG	46.59 μ g/ml	44.59 μ g/ml	/	<ul style="list-style-type: none"> • Triggers G0/G1 cell cycle arrest and apoptosis • Produces reactive oxygen species and induces DNA damage • Regulates p53/p21 and CDK4/cyclin D1 protein expression • Decreased Akt/mTOR signalling 	(140)
	G5T/VGH	39.20 μ g/ml	41.33 μ g/ml	/		
	GBM8401	49.71 μ g/ml	43.28 μ g/ml	/		
	GBM8901	40.55 μ g/ml	41.71 μ g/ml	/		
<i>Hexaplex trunculus</i> hypobranchial gland extract	U87MG	/	22 μ g/ml	/	/	(127)
Danshenn standardised extract	LN-229	50.00 μ M	/	/	/	(141)
<i>Clerodendrum volubile</i> extract	U87MG	/	120.00 μ g/ml	/	<ul style="list-style-type: none"> • Attenuation of redox imbalance inactivating G0/G1 phase • DNA depopulation in the G0/G1 and G2/M phases • Cell cycle arrest at S phase leading to apoptosis 	(142)
<i>Prunus spinosa</i> L. extract	LN-229	5.25 mg/ml	/	/	/	(143)
	U87	9.78 mg/ml	/	/		
	T98G	5.55 mg/ml	/	/		
<i>Fagara tessmannii</i> bark extract	U87MG	/	/	17.34 μ g/ml	<ul style="list-style-type: none"> • Enhanced reactive oxygen species production 	(144)

					<ul style="list-style-type: none"> • Apoptosis mediated through the intrinsic pathway • Mitochondrial membrane potential alteration 	
<i>Salvia officinalis l.</i> extract	42-GBMA	52.27 µg/ml	/	/		(145)
<i>Rosmarinus officinalis l.</i> extract		63.59 µg/ml	/	/		
<i>Dendrobium transparens</i> extract	U251	75.84 µg/ml	/	/		(146)
<i>Papilionanthe uniflora</i> extract		2585.88 µg/ml	/	/		
<i>Pholidota articulata</i> extract		3170.55 µg/ml	/	/		
<i>Vanda cristata</i> extract		163.66 µg/ml	/	/		
<i>Araliopsis soyauxii</i> bark extract	U87MG	/	/	18.67 µg/ml	<ul style="list-style-type: none"> • Mitochondrial membrane potential alteration • Enhanced reactive oxygen species production • Apoptosis mediated through the intrinsic pathway 	(147)
<i>Araliopsis soyauxii</i> root extract		/	/	35.42 µg/ml		
<i>Araliopsis soyauxii</i> leaf extract		/	/	33.22 µg/ml		
Hexane extract of seaweek <i>Caulerpa lentillifera</i>	A172	22.47 µg/ml	/	/	/	(148)
<i>Herba anthrisci cerefolii</i> extract	A172	/	765.21 µg/ml	/	/	(149)

Table 3: Phytochemicals assessed against glioblastoma multiforme *in-vitro*

Compound	Cell lines	Concentration of α -solanine which achieved IC50 (μ M)			Mode of action	Reference
		24 hours	48 hours	72 hours		
Honokiol	DBTRG-05MG	/	/	30.00 μ M	• Triggers sub-G0 arrest leading to apoptosis	(150)
Saponin 1	U251	7.40 μ g/ml	/	/	• Decrease in Bcl-2/Bax ratio, initiated apoptosis by activating casp-3 and casp-9	(133)
	U87MG	8.6 μ g/ml	/	/		
Solamargine	MO59J	9.59 μ g/ml	/	/	/	(137)
	U343MG	16.30 μ g/ml	/	/		
	U251	8.09 μ g/ml	/	/		
Solasonine	MO59J	21.72 μ g/ml	/	/	/	(137)
	U343MG	23.09 μ g/ml	/	/		
	U251	26.21 μ g/ml	/	/		
Gossypol	U87MG	/	57.00 μ M	/	/	(151)
Piplartine	SF295	0.8 μ g/ml	/	/	/	(152)
Deoxydophyllotoxin (DPT)	SF126	/	/	13.95 nM	• Triggers G2/M arrest	(153)
	U87MG	/	/	15.06 nM		
Olivetoric acid	U87MG	/	17.55 mg/L	/	• Autophagy • Oxidative DNA damage	(154)
Physodic acid		/	410.72 mg/L	/		
Psoromic acid		/	56.22 mg/L	/		
Kukoamine A.	U251	73.40 μ g/ml	/	/	• Triggers G0/G1 arrest • Upregulation of Bax and casp-3, downregulation of Bcl-2	(135)
	WJ1	22.10 μ g/ml	/	/		
Gastrodin	DBTRG-05MG	25.00 μ M	/	/	• Oxidative stress-associated apoptosis • P53 activation	(130)
Dihydrotanshinone	T98G	/	/	1.78 μ M	/	(155)
	U87MG	/	/	1.50 μ M		
Cordycepin	U251	175 μ M	/	/	• Upregulates p53, Bax, casp-3 and casp-9 and downregulates Bcl-2 • Induced generation of reactive oxygen species and SOD, GPX and catalase	(131)
Tanshinone IIA	LN-229	48.20 μ M	/	/	/	(141)
Cryptotanshinone		51.90 μ M	/	/		
Bacoside A	U87MG	83.01 μ g/ml	/	/	• Triggers sub-G0 arrest • Induced early apoptosis	(156)

Nuciferine	U87MG	/	72.30 μ M	/	<ul style="list-style-type: none"> • Triggers G2/M arrest • Inhibited proliferation, mobility, stemness, angiogenesis and epithelial-to-mesenchymal transition 	(157)
	U251	/	59.90 μ M	/		
Naringin	U87MG	/	15.10 μ M	/	/	(158)
Cedrol	DBTRG-05MG	118.7 μ M	101.5 μ M	107.2 μ M	<ul style="list-style-type: none"> • Produces reactive oxygen species resulting in autophagy and apoptotic cell death 	(159)
Ascorbic acid	42-GBMA	20.61 μ g/ml	/	/	/	(145)
PBI-05204	U87MG	/	/	4.90 μ g/ml	<ul style="list-style-type: none"> • Induction of apoptosis and suppressed expression of Akt and mTOR 	(129)
	U251	/	/	7.30 μ g/ml		
	T98G	/	/	8.45 μ g/ml		
Withaferin A	U87MG	/	4.61 μ M	/	<ul style="list-style-type: none"> • Triggers G2/M arrest • Initiates intrinsic apoptosis by endoplasmic reticulum stress through the ATF4-ATF4-CHOP axis 	(134)
	U251	/	1.37 μ M	/		
Matteucinol	U251	/	/	26.57 μ g/ml	/	(160)
Gallotannin	DBTRG-05MG	/	/	22.50 μ g/ml	/	(161)
Chalcone derivative	U87MG	19.50 μ M	16.51 μ M	18.07 μ M	<ul style="list-style-type: none"> • Triggers G2/M arrest 	(162)
Zerumbone	U87MG	150 μ M	/	/	<ul style="list-style-type: none"> • Decreased expression of MMP-2 and MMP-9 • Inhibits Akt and ERK1/2 signalling 	(163)
Crocin	A172	3.10 mg/ml	2.19 mg/ml	1.72 mg/ml	<ul style="list-style-type: none"> • Apoptosis by upregulation of Bax 	(132)
Dimethylcrocin	A172	4.73 mg/ml	2.8 mg/ml	1.95 mg/ml	<ul style="list-style-type: none"> • Apoptosis by upregulation of Bax and downregulation of Bcl-2 	
p-coumaric acid	U87MG	/	0.50 mM	/	<ul style="list-style-type: none"> • Triggers G2/M arrest • Increase in p53 	(164)

The modes of action of the phytochemicals and extracts varied (**Figure 8**), however apoptosis was commonly induced (129,130,132–134,150,156,159,164). In addition, cell cycle arrest was noted by a number of studies, at different stages of the cell cycle, with G2/M arrest (134,142,153,162,164), being most commonly noted, followed by Sub-G0 (133,135,156) and G0/G1 arrest (140,142). A considerable number of the included studies (9/36) observed that extracts and phytochemicals induced cell death by generating ROS low concentrations (130,131,140,142,143,147,154,159). This suggests that generation of ROS may be a promising therapeutic strategy against GBM. One of the most frequently studied class of natural molecules of against GBM observed was alkaloids. (137,152,157). Alkaloids are among the most important drugs in human history and phytochemicals within this class of drugs which were determined to be exclusively harmful have found new uses as putative anti-cancer drugs (165). Hence, further studies investigating the uses of alkaloids as putative therapeutic agents against GBM is justified.

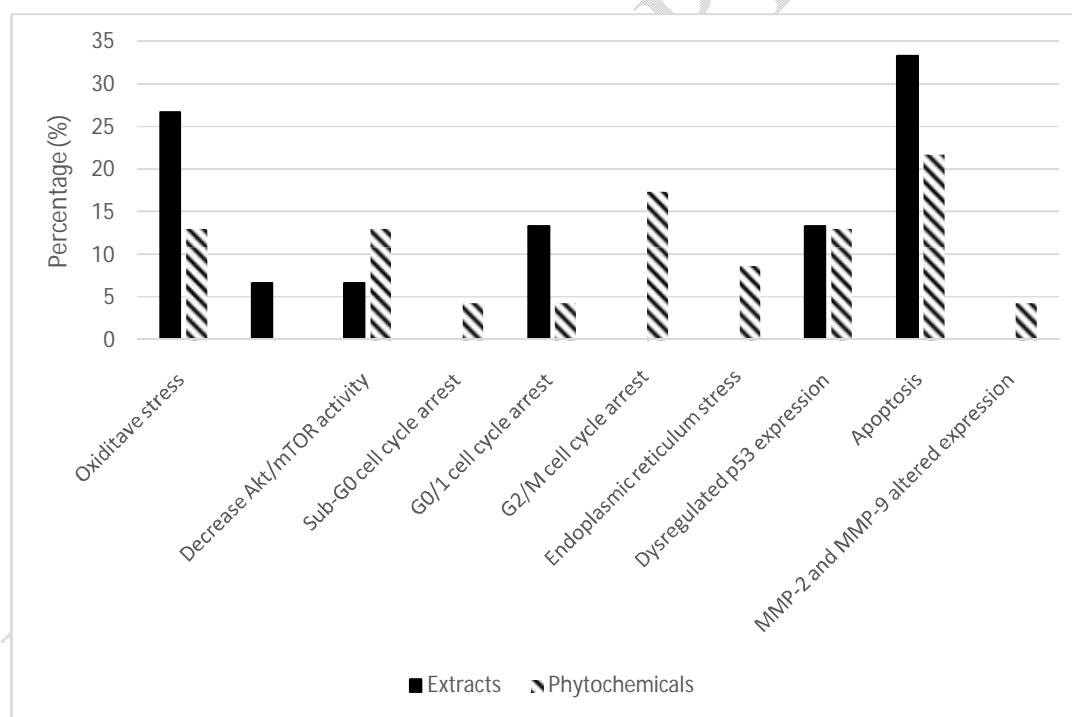


Figure 8: Documented modes of action of natural extracts and phytochemicals against glioblastoma multiforme *in-vitro*.

Several limitations need to be addressed to develop naturally derived molecules into therapeutic strategies. The precise molecule or group of molecules within extracts producing anti-cancer effects is unknown. Further work using chromatographic methods should be

conducted to identify these phytochemicals and identify any overlapping properties. In addition, several phytochemicals investigated against GBM demonstrated significant limitations such as poor water solubility (166), significant toxicity and long-term adipose storage (132), and need of co-administration with other drugs to produce cytotoxic effects. (131).

Additionally, more studies need to assess the efficacy of phytochemicals against TMZ, the current therapeutic standard of care for GBM. From the studies included in this review, only four studies compared the cytotoxicity of phytochemical to TMZ (140,159,161). Mann Whitney-U testing demonstrated statistically significant difference between the concentrations of natural extracts and phytochemicals required to reach IC₅₀ versus TMZ. At 24 and 48 hours of incubation (Table 3) difference between the concentration of phytochemicals and TMZ was noted **Table 3**. Yet, further studies are required to increase statistical power and unequivocally demonstrate the superiority, or otherwise, of natural extracts and phytochemicals against GBM *in-vitro*, over TMZ.

Table 4:

Time	Cell line	IC ₅₀ extract/ phytochemical (µg/ml)	IC ₅₀ Temozolomide (TMZ) (µg/ml)	p-value	Reference
24 hours	DBTRG-05MG	26.40	189.08	0.029	(159)
	DBTRG-05MG	46.59	180.45		(140)
	G5T/VGH	39.20	94.30		
	GBM8401	49.71	166.39		
48 hours	DBTRG-05MG	22.57	68.87	0.029	(159)
	DBTRG-05MG	44.59	95.58		(140)
	G5T/VGH	41.33	86.00		
	GBM8401	43.28	95.76		
72 hours	DBTRG-05MG	23.84	23.26	0.2	(159)
	DBTRG-05MG	22.50	13.90		(161)
	T98G	0.50	121.54		(155)
	U87MG	0.42	62.71		

Conclusion

GBM is a highly complex disease with an abysmal prognosis. Optimal treatment only improves prognosis by a few months. The heterogeneity of GBM tumours coupled with numerous chemotherapeutic resistances significantly complicate research into discovering novel therapeutic strategies. Understanding the different intracellular signaling cascades and how these pathways interact with one another is crucial for evaluating the mode of action of putative therapeutic treatments. *In-vitro* evidence suggests that naturally derived compounds may be promising agents against GBM, yet further research is needed to consolidate phytochemicals' efficacy over TMZ.

Statements & Declarations

Ethical approval

No ethical approval was required for the synthesis of this review.

References

1. Louis DN, Perry A, Wesseling P, Brat DJ, Cree IA, Figarella-Branger D, et al. The 2021 WHO Classification of Tumors of the Central Nervous System: a summary. *Neuro Oncol.* 2021 Aug 2;23(8):1231–51.
2. Veliz I, Loo Y, Castillo O, Karachaliou N, Nigro O, Rosell R. Advances and challenges in the molecular biology and treatment of glioblastoma-is there any hope for the future? *Ann Transl Med.* 2015 Jan;3(1):7.
3. Montemurro N. Glioblastoma multiforme and genetic mutations: the issue is not over yet. an overview of the current literature. *J Neurol Surg A, Cent Eur Neurosurg.* 2020 Jan;81(1):64–70.
4. Abbruzzese C, Persico M, Matteoni S, Paggi MG. Molecular biology in glioblastoma multiforme treatment. *Cells.* 2022 Jun 5;11(11).
5. Nørøxe DS, Poulsen HS, Lassen U. Hallmarks of glioblastoma: a systematic review. *ESMO Open.* 2016;1(6):e000144.
6. Mumtaz SM, Bhardwaj G, Goswami S, Tonk RK, Goyal RK, Abu-Izneid T, et al. Management of Glioblastoma Multiforme by Phytochemicals: Applications of Nanoparticle-Based Targeted Drug Delivery System. *Curr Drug Targets.*

- 2021;22(4):429–42.
7. Phillips HS, Kharbanda S, Chen R, Forrest WF, Soriano RH, Wu TD, et al. Molecular subclasses of high-grade glioma predict prognosis, delineate a pattern of disease progression, and resemble stages in neurogenesis. *Cancer Cell*. 2006 Mar;9(3):157–73.
 8. Verhaak RGW, Hoadley KA, Purdom E, Wang V, Qi Y, Wilkerson MD, et al. Integrated genomic analysis identifies clinically relevant subtypes of glioblastoma characterized by abnormalities in PDGFRA, IDH1, EGFR, and NF1. *Cancer Cell*. 2010 Jan 19;17(1):98–110.
 9. Brennan CW, Verhaak RGW, McKenna A, Campos B, Nounshmehr H, Salama SR, et al. The somatic genomic landscape of glioblastoma. *Cell*. 2013 Oct 10;155(2):462–77.
 10. Louis DN, Perry A, Reifenberger G, von Deimling A, Figarella-Branger D, Cavenee WK, et al. The 2016 World Health Organization Classification of Tumors of the Central Nervous System: a summary. *Acta Neuropathol*. 2016 Jun;131(6):803–20.
 11. Miller KD, Ostrom QT, Kruchko C, Patil N, Tihan T, Cioffi G, et al. Brain and other central nervous system tumor statistics, 2021. *CA Cancer J Clin*. 2021 Sep;71(5):381–406.
 12. Grochans S, Cybulska AM, Simińska D, Korbecki J, Kojder K, Chlubek D, et al. Epidemiology of Glioblastoma Multiforme-Literature Review. *Cancers (Basel)*. 2022 May 13;14(10).
 13. Tykocki T, Eltayeb M. Ten-year survival in glioblastoma. A systematic review. *J Clin Neurosci*. 2018 Aug;54:7–13.
 14. Grech N, Dalli T, Mizzi S, Meilak L, Calleja N, Zrinzo A. Rising Incidence of Glioblastoma Multiforme in a Well-Defined Population. *Cureus*. 2020 May 19;12(5):e8195.
 15. Wanis HA, Møller H, Ashkan K, Davies EA. The incidence of major subtypes of primary brain tumors in adults in England 1995–2017. *Neuro Oncol*. 2021 Aug 2;23(8):1371–82.
 16. Lunt SY, Vander Heiden MG. Aerobic glycolysis: meeting the metabolic requirements of cell proliferation. *Annu Rev Cell Dev Biol*. 2011;27:441–64.
 17. Masui K, Mischel PS, Reifenberger G. Molecular classification of gliomas. *Handb Clin Neurol*. 2016;134:97–120.
 18. Guntuku L, Naidu VGM, Yerra VG. Mitochondrial dysfunction in gliomas: pharmacotherapeutic potential of natural compounds. *Curr Neuropharmacol*. 2016;14(6):567–83.
 19. Agnihotri S, Zadeh G. Metabolic reprogramming in glioblastoma: the influence of cancer metabolism on epigenetics and unanswered questions. *Neuro Oncol*. 2016 Feb;18(2):160–72.
 20. Schwartzenuber J, Korshunov A, Liu X-Y, Jones DTW, Pfaff E, Jacob K, et al. Driver mutations in histone H3.3 and chromatin remodelling genes in paediatric glioblastoma. *Nature*. 2012 Jan 29;482(7384):226–31.
 21. Toyonaga T, Yamaguchi S, Hirata K, Kobayashi K, Manabe O, Watanabe S, et al. Hypoxic glucose metabolism in glioblastoma as a potential prognostic factor. *Eur J Nucl Med Mol Imaging*. 2017 Apr;44(4):611–9.
 22. Porporato PE, Dhup S, Dadhich RK, Copetti T, Sonveaux P. Anticancer targets in the glycolytic metabolism of tumors: a comprehensive review. *Front Pharmacol*. 2011 Aug 25;2:49.
 23. Kefas B, Comeau L, Erdle N, Montgomery E, Amos S, Purow B. Pyruvate kinase M2 is a target of the tumor-suppressive microRNA-326 and regulates the survival of glioma cells. *Neuro Oncol*. 2010 Nov;12(11):1102–12.

24. Mukherjee J, Phillips JJ, Zheng S, Wiencke J, Ronen SM, Pieper RO. Pyruvate kinase M2 expression, but not pyruvate kinase activity, is up-regulated in a grade-specific manner in human glioma. *PLoS One*. 2013 Feb 25;8(2):e57610.
25. Desai S, Ding M, Wang B, Lu Z, Zhao Q, Shaw K, et al. Tissue-specific isoform switch and DNA hypomethylation of the pyruvate kinase PKM gene in human cancers. *Oncotarget*. 2014 Sep 30;5(18):8202–10.
26. Gilbert MR, Dignam JJ, Armstrong TS, Wefel JS, Blumenthal DT, Vogelbaum MA, et al. A randomized trial of bevacizumab for newly diagnosed glioblastoma. *N Engl J Med*. 2014 Feb 20;370(8):699–708.
27. Heddleston JM, Li Z, McLendon RE, Hjelmeland AB, Rich JN. The hypoxic microenvironment maintains glioblastoma stem cells and promotes reprogramming towards a cancer stem cell phenotype. *Cell Cycle*. 2009 Oct 15;8(20):3274–84.
28. Sutendra G, Michelakis ED. Pyruvate dehydrogenase kinase as a novel therapeutic target in oncology. *Front Oncol*. 2013 Mar 7;3:38.
29. Bensinger SJ, Christofk HR. New aspects of the Warburg effect in cancer cell biology. *Semin Cell Dev Biol*. 2012 Jun;23(4):352–61.
30. Christofk HR, Vander Heiden MG, Harris MH, Ramanathan A, Gerszten RE, Wei R, et al. The M2 splice isoform of pyruvate kinase is important for cancer metabolism and tumour growth. *Nature*. 2008 Mar 13;452(7184):230–3.
31. Ruiz-Rodado V, Seki T, Dowdy T, Lita A, Zhang M, Han S, et al. Metabolic landscape of a genetically engineered mouse model of IDH1 mutant glioma. *Cancers (Basel)*. 2020 Jun 19;12(6).
32. Pearson JRD, Regad T. Targeting cellular pathways in glioblastoma multiforme. *Signal Transduct Target Ther*. 2017 Sep 29;2:17040.
33. Li X, Wu C, Chen N, Gu H, Yen A, Cao L, et al. PI3K/Akt/mTOR signaling pathway and targeted therapy for glioblastoma. *Oncotarget*. 2016 May 31;7(22):33440–50.
34. Majewska E, Szeliga M. Akt/gsk3 β signaling in glioblastoma. *Neurochem Res*. 2017 Mar;42(3):918–24.
35. Sami A, Karsy M. Targeting the PI3K/AKT/mTOR signaling pathway in glioblastoma: novel therapeutic agents and advances in understanding. *Tumour Biol*. 2013 Aug;34(4):1991–2002.
36. Sanchez-Ortiz E, Cho W, Nazarenko I, Mo W, Chen J, Parada LF. NF1 regulation of RAS/ERK signaling is required for appropriate granule neuron progenitor expansion and migration in cerebellar development. *Genes Dev*. 2014 Nov 1;28(21):2407–20.
37. Tilak M, Holborn J, New LA, Lalonde J, Jones N. Receptor tyrosine kinase signaling and targeting in glioblastoma multiforme. *Int J Mol Sci*. 2021 Feb 12;22(4).
38. Zhi Y-H, Song M-M, Wang P-L, Zhang T, Yin Z-Y. Suppression of matrix metalloproteinase-2 via RNA interference inhibits pancreatic carcinoma cell invasiveness and adhesion. *World J Gastroenterol*. 2009 Mar 7;15(9):1072–8.
39. Huang PH, Cavenee WK, Furnari FB, White FM. Uncovering therapeutic targets for glioblastoma: a systems biology approach. *Cell Cycle*. 2007 Nov 15;6(22):2750–4.
40. Wang SI, Puc J, Li J, Bruce JN, Cairns P, Sidransky D, et al. Somatic mutations of PTEN in glioblastoma multiforme. *Cancer Res*. 1997 Oct 1;57(19):4183–6.
41. Cancer Genome Atlas Research Network. Comprehensive genomic characterization defines human glioblastoma genes and core pathways. *Nature*. 2008 Oct 23;455(7216):1061–8.
42. Holland EC, Celestino J, Dai C, Schaefer L, Sawaya RE, Fuller GN. Combined activation of Ras and Akt in neural progenitors induces glioblastoma formation in mice. *Nat Genet*. 2000 May;25(1):55–7.
43. Valdés-Rives SA, Casique-Aguirre D, Germán-Castelán L, Velasco-Velázquez MA,

- González-Arenas A. Apoptotic signaling pathways in glioblastoma and therapeutic implications. *Biomed Res Int.* 2017 Nov 12;2017:7403747.
44. Krakstad C, Chekenya M. Survival signalling and apoptosis resistance in glioblastomas: opportunities for targeted therapeutics. *Mol Cancer.* 2010 Jun 1;9:135.
 45. Stegh AH, Kim H, Bachoo RM, Forloney KL, Zhang J, Schulze H, et al. Bcl2L12 inhibits post-mitochondrial apoptosis signaling in glioblastoma. *Genes Dev.* 2007 Jan 1;21(1):98–111.
 46. Ruano Y, Mollejo M, Camacho FI, Rodríguez de Lope A, Fiaño C, Ribalta T, et al. Identification of survival-related genes of the phosphatidylinositol 3'-kinase signaling pathway in glioblastoma multiforme. *Cancer.* 2008 Apr 1;112(7):1575–84.
 47. Steinbach JP, Weller M. Apoptosis in gliomas: molecular mechanisms and therapeutic implications. *J Neurooncol.* 2004 Nov;70(2):247–56.
 48. Strik H, Deininger M, Streffer J, Grote E, Wickboldt J, Dichgans J, et al. BCL-2 family protein expression in initial and recurrent glioblastomas: modulation by radiochemotherapy. *J Neurol Neurosurg Psychiatry.* 1999 Dec;67(6):763–8.
 49. Tyagi D, Sharma BS, Gupta SK, Kaul D, Vasishta RK, Khosla VK. Expression of Bcl2 proto-oncogene in primary tumors of the central nervous system. *Neurol India.* 2002 Sep;50(3):290–4.
 50. Trejo-Solís C, Serrano-Garcia N, Escamilla-Ramírez Á, Castillo-Rodríguez RA, Jimenez-Farfan D, Palencia G, et al. Autophagic and apoptotic pathways as targets for chemotherapy in glioblastoma. *Int J Mol Sci.* 2018 Nov 27;19(12).
 51. Murphy ÁC, Weyhenmeyer B, Schmid J, Kilbride SM, Rehm M, Huber HJ, et al. Activation of executioner caspases is a predictor of progression-free survival in glioblastoma patients: a systems medicine approach. *Cell Death Dis.* 2013 May 16;4:e629.
 52. Blahovcova E, Richterova R, Kolarovszki B, Dobrota D, Racay P, Hatok J. Apoptosis-related gene expression in tumor tissue samples obtained from patients diagnosed with glioblastoma multiforme. *Int J Mol Med.* 2015 Dec;36(6):1677–84.
 53. Pawlowska E, Szczepanska J, Szatkowska M, Blasiak J. An Interplay between Senescence, Apoptosis and Autophagy in Glioblastoma Multiforme-Role in Pathogenesis and Therapeutic Perspective. *Int J Mol Sci.* 2018 Mar 17;19(3).
 54. Hockenbery DM. Targeting mitochondria for cancer therapy. *Environ Mol Mutagen.* 2010 Jun;51(5):476–89.
 55. Moroni MC, Hickman ES, Lazzerini Denchi E, Caprara G, Colli E, Cecconi F, et al. Apaf-1 is a transcriptional target for E2F and p53. *Nat Cell Biol.* 2001 Jun;3(6):552–8.
 56. Chu P-M, Chen L-H, Chen M-T, Ma H-I, Su T-L, Hsieh P-C, et al. Targeting autophagy enhances BO-1051-induced apoptosis in human malignant glioma cells. *Cancer Chemother Pharmacol.* 2012 Mar;69(3):621–33.
 57. Bronisz A, Salińska E, Chiocca EA, Godlewski J. Hypoxic Roadmap of Glioblastoma-Learning about Directions and Distances in the Brain Tumor Environment. *Cancers (Basel).* 2020 May 13;12(5).
 58. Denton D, Nicolson S, Kumar S. Cell death by autophagy: facts and apparent artefacts. *Cell Death Differ.* 2012 Jan;19(1):87–95.
 59. Galavotti S, Bartesaghi S, Faccenda D, Shaked-Rabi M, Sanzone S, McEvoy A, et al. The autophagy-associated factors DRAM1 and p62 regulate cell migration and invasion in glioblastoma stem cells. *Oncogene.* 2013 Feb 7;32(6):699–712.
 60. Tamrakar S, Yashiro M, Kawashima T, Uda T, Terakawa Y, Kuwae Y, et al. Clinicopathological Significance of Autophagy-related Proteins and its Association With Genetic Alterations in Gliomas. *Anticancer Res.* 2019 Mar;39(3):1233–42.
 61. Wen Z-P, Zeng W-J, Chen Y-H, Li H, Wang J-Y, Cheng Q, et al. Knockdown

- ATG4C inhibits gliomas progression and promotes temozolomide chemosensitivity by suppressing autophagic flux. *J Exp Clin Cancer Res.* 2019 Jul 10;38(1):298.
62. Zhao M, Xu H, Zhang B, Hong B, Yan W, Zhang J. Impact of nuclear factor erythroid-derived 2-like 2 and p62/sequestosome expression on prognosis of patients with gliomas. *Hum Pathol.* 2015 Jun;46(6):843–9.
 63. Bustos SO, Antunes F, Rangel MC, Chammas R. Emerging Autophagy Functions Shape the Tumor Microenvironment and Play a Role in Cancer Progression - Implications for Cancer Therapy. *Front Oncol.* 2020 Nov 25;10:606436.
 64. Lim SM, Mohamad Hanif EA, Chin S-F. Is targeting autophagy mechanism in cancer a good approach? The possible double-edge sword effect. *Cell Biosci.* 2021 Mar 20;11(1):56.
 65. Morselli E, Galluzzi L, Kepp O, Vicencio J-M, Criollo A, Maiuri MC, et al. Anti- and pro-tumor functions of autophagy. *Biochim Biophys Acta.* 2009 Sep;1793(9):1524–32.
 66. Yun CW, Lee SH. The roles of autophagy in cancer. *Int J Mol Sci.* 2018 Nov 5;19(11).
 67. Jung CH, Jun CB, Ro S-H, Kim Y-M, Otto NM, Cao J, et al. ULK-Atg13-FIP200 complexes mediate mTOR signaling to the autophagy machinery. *Mol Biol Cell.* 2009 Apr;20(7):1992–2003.
 68. Kim J, Kundu M, Viollet B, Guan K-L. AMPK and mTOR regulate autophagy through direct phosphorylation of Ulk1. *Nat Cell Biol.* 2011 Feb;13(2):132–41.
 69. Law F, Seo JH, Wang Z, DeLeon JL, Bolis Y, Brown A, et al. The VPS34 PI3K negatively regulates RAB-5 during endosome maturation. *J Cell Sci.* 2017 Jun 15;130(12):2007–17.
 70. Polson HEJ, de Lartigue J, Rigden DJ, Reedijk M, Urbé S, Clague MJ, et al. Mammalian Atg18 (WIPI2) localizes to omegasome-anchored phagophores and positively regulates LC3 lipidation. *Autophagy.* 2010 May 16;6(4):506–22.
 71. Morris DH, Yip CK, Shi Y, Chait BT, Wang QJ. Beclin 1-vps34 complex architecture: understanding the nuts and bolts of therapeutic targets. *Front Biol (Beijing).* 2015 Oct;10(5):398–426.
 72. Yang Z, Wilkie-Grantham RP, Yanagi T, Shu C-W, Matsuzawa S-I, Reed JC. ATG4B (Autophagin-1) phosphorylation modulates autophagy. *J Biol Chem.* 2015 Oct 30;290(44):26549–61.
 73. Wild P, McEwan DG, Dikic I. The LC3 interactome at a glance. *J Cell Sci.* 2014 Jan 1;127(Pt 1):3–9.
 74. Monastyrska I, Rieter E, Klionsky DJ, Reggiori F. Multiple roles of the cytoskeleton in autophagy. *Biol Rev Camb Philos Soc.* 2009 Aug;84(3):431–48.
 75. Russell RC, Tian Y, Yuan H, Park HW, Chang Y-Y, Kim J, et al. ULK1 induces autophagy by phosphorylating Beclin-1 and activating VPS34 lipid kinase. *Nat Cell Biol.* 2013 Jul;15(7):741–50.
 76. Cao Y, Klionsky DJ. Physiological functions of Atg6/Beclin 1: a unique autophagy-related protein. *Cell Res.* 2007 Oct;17(10):839–49.
 77. Olivier C, Oliver L, Lalier L, Vallette FM. Drug resistance in glioblastoma: the two faces of oxidative stress. *Front Mol Biosci.* 2020;7:620677.
 78. Liu S, Dong L, Shi W, Zheng Z, Liu Z, Meng L, et al. Potential targets and treatments affect oxidative stress in gliomas: An overview of molecular mechanisms. *Front Pharmacol.* 2022 Jul 22;13:921070.
 79. Reuter S, Gupta SC, Chaturvedi MM, Aggarwal BB. Oxidative stress, inflammation, and cancer: how are they linked? *Free Radic Biol Med.* 2010 Dec 1;49(11):1603–16.
 80. Lacher SE, Levings DC, Freeman S, Slattery M. Identification of a functional

- antioxidant response element at the HIF1A locus. *Redox Biol.* 2018 Oct;19:401–11.
81. Gonzalez-Gronow M, Gopal U, Austin RC, Pizzo SV. Glucose-regulated protein (GRP78) is an important cell surface receptor for viral invasion, cancers, and neurological disorders. *IUBMB Life.* 2021 Jun;73(6):843–54.
 82. Yadav RK, Chae S-W, Kim H-R, Chae HJ. Endoplasmic reticulum stress and cancer. *J Cancer Prev.* 2014 Jun;19(2):75–88.
 83. Shi P, Zhang Z, Xu J, Zhang L, Cui H. Endoplasmic reticulum stress-induced cell death as a potential mechanism for targeted therapy in glioblastoma (Review). *Int J Oncol.* 2021 Aug;59(2).
 84. Kim C, Kim B. Anti-Cancer Natural Products and Their Bioactive Compounds Inducing ER Stress-Mediated Apoptosis: A Review. *Nutrients.* 2018 Aug 4;10(8).
 85. Zhang D, Wang F, Pang Y, Ke X-X, Zhu S, Zhao E, et al. Down-regulation of CHERP inhibits neuroblastoma cell proliferation and induces apoptosis through ER stress induction. *Oncotarget.* 2017 Oct 6;8(46):80956–70.
 86. Kavitha CV, Jain AK, Agarwal C, Pierce A, Keating A, Huber KM, et al. Asiatic acid induces endoplasmic reticulum stress and apoptotic death in glioblastoma multiforme cells both in vitro and in vivo. *Mol Carcinog.* 2015 Nov;54(11):1417–29.
 87. Prell T, Stubendorff B, Le TT, Gaur N, Tadić V, Rödiger A, et al. Reaction to endoplasmic reticulum stress via ATF6 in amyotrophic lateral sclerosis deteriorates with aging. *Front Aging Neurosci.* 2019 Jan 25;11:5.
 88. Dadey DYA, Kapoor V, Khudanyan A, Urano F, Kim AH, Thotala D, et al. The ATF6 pathway of the ER stress response contributes to enhanced viability in glioblastoma. *Oncotarget.* 2016 Jan 12;7(2):2080–92.
 89. Mukhopadhyay S, Panda PK, Sinha N, Das DN, Bhutia SK. Autophagy and apoptosis: where do they meet? *Apoptosis.* 2014 Apr;19(4):555–66.
 90. Yousefi S, Perozzo R, Schmid I, Ziemięcki A, Schaffner T, Scapozza L, et al. Calpain-mediated cleavage of Atg5 switches autophagy to apoptosis. *Nat Cell Biol.* 2006 Oct;8(10):1124–32.
 91. Levin-Salomon V, Bialik S, Kimchi A. DAP-kinase and autophagy. *Apoptosis.* 2014 Feb;19(2):346–56.
 92. Rubinstein AD, Eisenstein M, Ber Y, Bialik S, Kimchi A. The autophagy protein Atg12 associates with antiapoptotic Bcl-2 family members to promote mitochondrial apoptosis. *Mol Cell.* 2011 Dec 9;44(5):698–709.
 93. Fan Q-W, Weiss WA. Inhibition of PI3K-Akt-mTOR signaling in glioblastoma by mTORC1/2 inhibitors. *Methods Mol Biol.* 2012;821:349–59.
 94. Xia Q, Xu M, Zhang P, Liu L, Meng X, Dong L. Therapeutic Potential of Autophagy in Glioblastoma Treatment With Phosphoinositide 3-Kinase/Protein Kinase B/Mammalian Target of Rapamycin Signaling Pathway Inhibitors. *Front Oncol.* 2020 Oct 2;10:572904.
 95. Rankin EB, Giaccia AJ. The role of hypoxia-inducible factors in tumorigenesis. *Cell Death Differ.* 2008 Apr;15(4):678–85.
 96. Muh CR, Joshi S, Singh AR, Kesari S, Durden DL, Makale MT. PTEN status mediates 2ME2 anti-tumor efficacy in preclinical glioblastoma models: role of HIF1 α suppression. *J Neurooncol.* 2014 Jan;116(1):89–97.
 97. Velpula KK, Bhasin A, Asuthkar S, Tsung AJ. Combined targeting of PDK1 and EGFR triggers regression of glioblastoma by reversing the Warburg effect. *Cancer Res.* 2013 Dec 15;73(24):7277–89.
 98. Yang W, Zheng Y, Xia Y, Ji H, Chen X, Guo F, et al. ERK1/2-dependent phosphorylation and nuclear translocation of PKM2 promotes the Warburg effect. *Nat Cell Biol.* 2012 Dec;14(12):1295–304.

99. Shen H, Hau E, Joshi S, Dilda PJ, McDonald KL. Sensitization of glioblastoma cells to irradiation by modulating the glucose metabolism. *Mol Cancer Ther.* 2015 Aug;14(8):1794–804.
100. Qi W, Keenan HA, Li Q, Ishikado A, Kannt A, Sadowski T, et al. Pyruvate kinase M2 activation may protect against the progression of diabetic glomerular pathology and mitochondrial dysfunction. *Nat Med.* 2017 Jun;23(6):753–62.
101. Kurihara-Shimomura M, Sasahira T, Nakashima C, Kuniyasu H, Shimomura H, Kirita T. The multifarious functions of pyruvate kinase M2 in oral cancer cells. *Int J Mol Sci.* 2018 Sep 25;19(10).
102. Li Q, Qi X, Jia W. 3,3',5-triiodothyroxine inhibits apoptosis and oxidative stress by the PKM2/PKM1 ratio during oxygen-glucose deprivation/reperfusion AC16 and HCM-a cells: T3 inhibits apoptosis and oxidative stress by PKM2/PKM1 ratio. *Biochem Biophys Res Commun.* 2016 Jun 17;475(1):51–6.
103. Taniguchi K, Sakai M, Sugito N, Kumazaki M, Shinohara H, Yamada N, et al. PTBP1-associated microRNA-1 and -133b suppress the Warburg effect in colorectal tumors. *Oncotarget.* 2016 Apr 5;7(14):18940–52.
104. Shuvalov O, Kizenko A, Petukhov A, Fedorova O, Daks A, Bottrill A, et al. SEMG1/2 augment energy metabolism of tumor cells. *Cell Death Dis.* 2020 Dec 11;11(12):1047.
105. Durairandy N, Dharunya G, Lakra R, Korapatti PS, Syamala Kiran M. Fabrication of plumbagin on silver nanoframework for tunable redox modulation: Implications for therapeutic angiogenesis. *J Cell Physiol.* 2019 Aug;234(8):13110–27.
106. Liang J, Cao R, Wang X, Zhang Y, Wang P, Gao H, et al. Mitochondrial PKM2 regulates oxidative stress-induced apoptosis by stabilizing Bcl2. *Cell Res.* 2017 Mar;27(3):329–51.
107. Bischoff FC, Werner A, John D, Boeckel J-N, Melissari M-T, Grote P, et al. Identification and Functional Characterization of Hypoxia-Induced Endoplasmic Reticulum Stress Regulating lncRNA (HypERlnc) in Pericytes. *Circ Res.* 2017 Aug 4;121(4):368–75.
108. Berghauer Pont LME, Kleijn A, Kloezeman JJ, van den Bossche W, Kaufmann JK, de Vrij J, et al. The HDAC Inhibitors Scriptaid and LBH589 Combined with the Oncolytic Virus Delta24-RGD Exert Enhanced Anti-Tumor Efficacy in Patient-Derived Glioblastoma Cells. *PLoS One.* 2015 May 18;10(5):e0127058.
109. Vasilatos SN, Katz TA, Oesterreich S, Wan Y, Davidson NE, Huang Y. Crosstalk between lysine-specific demethylase 1 (LSD1) and histone deacetylases mediates antineoplastic efficacy of HDAC inhibitors in human breast cancer cells. *Carcinogenesis.* 2013 Jun;34(6):1196–207.
110. Huang W-J, Lin C-W, Lee C-Y, Chi L-L, Chao Y-C, Wang H-N, et al. NBM-HD-3, a novel histone deacetylase inhibitor with anticancer activity through modulation of PTEN and AKT in brain cancer cells. *J Ethnopharmacol.* 2011 Jun 14;136(1):156–67.
111. Balandeh E, Mohammadshafie K, Mahmoudi Y, Hossein Pourhanifeh M, Rajabi A, Bahabadi ZR, et al. Roles of Non-coding RNAs and Angiogenesis in Glioblastoma. *Front Cell Dev Biol.* 2021 Sep 27;9:716462.
112. Stupp R, Mason WP, van den Bent MJ, Weller M, Fisher B, Taphoorn MJB, et al. Radiotherapy plus concomitant and adjuvant temozolomide for glioblastoma. *N Engl J Med.* 2005 Mar 10;352(10):987–96.
113. Weller M, Le Rhun E, Preusser M, Tonn J-C, Roth P. How we treat glioblastoma. *ESMO Open.* 2019 Jun 17;4(Suppl 2):e000520.
114. Zhang H, Wang R, Yu Y, Liu J, Luo T, Fan F. Glioblastoma Treatment Modalities besides Surgery. *J Cancer.* 2019 Aug 27;10(20):4793–806.
115. Fisher JP, Adamson DC. Current FDA-Approved Therapies for High-Grade

- Malignant Gliomas. *Biomedicines*. 2021 Mar 22;9(3).
116. Patel AP, Tirosch I, Trombetta JJ, Shalek AK, Gillespie SM, Wakimoto H, et al. Single-cell RNA-seq highlights intratumoral heterogeneity in primary glioblastoma. *Science*. 2014 Jun 20;344(6190):1396–401.
 117. Medema JP. Cancer stem cells: the challenges ahead. *Nat Cell Biol*. 2013 Apr;15(4):338–44.
 118. Marjanovic ND, Weinberg RA, Chaffer CL. Cell plasticity and heterogeneity in cancer. *Clin Chem*. 2013 Jan;59(1):168–79.
 119. Lathia JD, Mack SC, Mulkearns-Hubert EE, Valentim CLL, Rich JN. Cancer stem cells in glioblastoma. *Genes Dev*. 2015 Jun 15;29(12):1203–17.
 120. Sottoriva A, Spiteri I, Piccirillo SGM, Touloumis A, Collins VP, Marioni JC, et al. Intratumor heterogeneity in human glioblastoma reflects cancer evolutionary dynamics. *Proc Natl Acad Sci USA*. 2013 Mar 5;110(10):4009–14.
 121. Dymova MA, Kuligina EV, Richter VA. Molecular mechanisms of drug resistance in glioblastoma. *Int J Mol Sci*. 2021 Jun 15;22(12).
 122. Bao S, Wu Q, McLendon RE, Hao Y, Shi Q, Hjelmeland AB, et al. Glioma stem cells promote radioresistance by preferential activation of the DNA damage response. *Nature*. 2006 Dec 7;444(7120):756–60.
 123. Daniel P, Sabri S, Chaddad A, Meehan B, Jean-Claude B, Rak J, et al. Temozolomide induced hypermutation in glioma: evolutionary mechanisms and therapeutic opportunities. *Front Oncol*. 2019 Feb 4;9:41.
 124. Stummer W, Meinel T, Ewelt C, Martus P, Jakobs O, Felsberg J, et al. Prospective cohort study of radiotherapy with concomitant and adjuvant temozolomide chemotherapy for glioblastoma patients with no or minimal residual enhancing tumor load after surgery. *J Neurooncol*. 2012 May;108(1):89–97.
 125. Liu G, Black KL, Yu JS. Sensitization of malignant glioma to chemotherapy through dendritic cell vaccination. *Expert Rev Vaccines*. 2006 Apr;5(2):233–47.
 126. Sakariassen PØ, Immervoll H, Chekenya M. Cancer stem cells as mediators of treatment resistance in brain tumors: status and controversies. *Neoplasia*. 2007 Nov;9(11):882–92.
 127. Ben Mabrouk H, Nejia S, Maram M, Naziha M, Soufia C-E. A New Protein Extract Inhibitor from Hypobranchial Purple Gland of *Hexaplex trunculus*, a Mediterranean Mollusk, Impairs the Motility of Human Glioblastoma U87 and the HeLa Cell Line of Cervical Carcinoma Cells. *Nutr Cancer*. 2017 Oct 30;69(7):1028–35.
 128. Guerra-García P, Marshall LV, Cockle JV, Ramachandran PV, Saran FH, Jones C, et al. Challenging the indiscriminate use of temozolomide in pediatric high-grade gliomas: A review of past, current, and emerging therapies. *Pediatr Blood Cancer*. 2019 Oct 16;e28011.
 129. Colapietro A, Yang P, Rossetti A, Mancini A, Vitale F, Martellucci S, et al. The Botanical Drug PBI-05204, a Supercritical CO₂ Extract of *Nerium Oleander*, Inhibits Growth of Human Glioblastoma, Reduces Akt/mTOR Activities, and Modulates GSC Cell-Renewal Properties. *Front Pharmacol*. 2020 Sep 11;11:552428.
 130. Liang W-Z, Jan C-R, Hsu S-S. Cytotoxic effects of gastrodin extracted from the rhizome of *Gastrodia elata* Blume in glioblastoma cells, but not in normal astrocytes, via the induction of oxidative stress-associated apoptosis that involved cell cycle arrest and p53 activation. *Food Chem Toxicol*. 2017 Sep;107(Pt A):280–92.
 131. Chaicharoenaudomrung N, Jaroonwitchawan T, Noisa P. Cordycepin induces apoptotic cell death of human brain cancer through the modulation of autophagy. *Toxicol In Vitro*. 2018 Feb;46:113–21.
 132. Hatziagiapiou K, Nikola O, Marka S, Koniari E, Kakouri E, Zografaki M-E, et al. An

- in vitro study of saffron carotenoids: the effect of crocin extracts and dimethylcrocetin on cancer cell lines. *Antioxidants (Basel)*. 2022 May 28;11(6).
133. Li J, Tang H, Zhang Y, Tang C, Li B, Wang Y, et al. Saponin 1 induces apoptosis and suppresses NF- κ B-mediated survival signaling in glioblastoma multiforme (GBM). *PLoS One*. 2013 Nov 21;8(11):e81258.
 134. Tang Q, Ren L, Liu J, Li W, Zheng X, Wang J, et al. Withaferin A triggers G2/M arrest and intrinsic apoptosis in glioblastoma cells via ATF4-ATF3-CHOP axis. *Cell Prolif*. 2020 Jan;53(1):e12706.
 135. Wang Q, Li H, Sun Z, Dong L, Gao L, Liu C, et al. Kukoamine A inhibits human glioblastoma cell growth and migration through apoptosis induction and epithelial-mesenchymal transition attenuation. *Sci Rep*. 2016 Nov 8;6:36543.
 136. Elkady AI, Hussein RAEH, Abu-Zinadah OA. Effects of crude extracts from medicinal herbs *Rhazya stricta* and *Zingiber officinale* on growth and proliferation of human brain cancer cell line in vitro. *Biomed Res Int*. 2014 Jul 22;2014:260210.
 137. Munari CC, de Oliveira PF, Campos JCL, Martins S de PL, Da Costa JC, Bastos JK, et al. Antiproliferative activity of *Solanum lycocarpum* alkaloidic extract and their constituents, solamargine and solasonine, in tumor cell lines. *J Nat Med*. 2014 Jan;68(1):236–41.
 138. de Mendonça ICG, Porto ICC de M, do Nascimento TG, de Souza NS, Oliveira JM dos S, Arruda RE dos S, et al. Brazilian red propolis: phytochemical screening, antioxidant activity and effect against cancer cells. *BMC Complement Altern Med*. 2015 Oct 14;15:357.
 139. Khan RS, Senthil M, Rao PC, Basha A, Alvala M, Tummuri D, et al. Cytotoxic constituents of *Abutilon indicum* leaves against U87MG human glioblastoma cells. *Nat Prod Res*. 2015;29(11):1069–73.
 140. Gu H, Feng J, Wang H, Qian Y, Yang L, Chen J, et al. *Celastrus orbiculatus* extract inhibits the migration and invasion of human glioblastoma cells in vitro. *BMC Complement Altern Med*. 2016 Oct 6;16(1):387.
 141. Di Cesare Mannelli L, Piccolo M, Maione F, Ferraro MG, Irace C, De Feo V, et al. Tanshinones from *Salvia miltiorrhiza* Bunge revert chemotherapy-induced neuropathic pain and reduce glioblastoma cells malignancy. *Biomed Pharmacother*. 2018 Sep;105:1042–9.
 142. Erukainure OL, Ashraf N, Naqvi AS, Zaruwa MZ, Muhammad A, Odusote AD, et al. Fatty Acids Rich Extract From *Clerodendrum volubile* Suppresses Cell Migration; Abates Oxidative Stress; and Regulates Cell Cycle Progression in Glioblastoma Multiforme (U87 MG) Cells. *Front Pharmacol*. 2018 Mar 20;9:251.
 143. Karakas N, Okur ME, Ozturk I, Ayla S, Karadag AE, Polat DÇ. Antioxidant Activity of Blackthorn (*Prunus spinosa* L.) Fruit Extract and Cytotoxic Effects on Various Cancer Cell Lines. *Medeni Med J*. 2019 Sep 27;34(3):297–304.
 144. Mbaveng AT, Damen F, Çelik İ, Tane P, Kuete V, Efferth T. Cytotoxicity of the crude extract and constituents of the bark of *Fagara tessmannii* towards multi-factorial drug resistant cancer cells. *J Ethnopharmacol*. 2019 May 10;235:28–37.
 145. Choukairi Z, Hazzaz T, José MF, Fechtali T. The cytotoxic activity of *Salvia officinalis* L. and *Rosmarinus officinalis* L. Leaves extracts on human glioblastoma cell line and their antioxidant effect. *J Complement Integr Med*. 2020 Mar 31;
 146. Joshi PR, Paudel MR, Chand MB, Pradhan S, Pant KK, Joshi GP, et al. Cytotoxic effect of selected wild orchids on two different human cancer cell lines. *Heliyon*. 2020 May 17;6(5):e03991.
 147. Mbaveng AT, Noulala CGT, Samba ARM, Tankeo SB, Fotso GW, Happi EN, et al. Cytotoxicity of botanicals and isolated phytochemicals from *Araliopsis soyauxii* Engl.

- (Rutaceae) towards a panel of human cancer cells. *J Ethnopharmacol*. 2021 Mar 1;267:113535.
148. Sangpairoj K. Hexane Extract of Seaweed *Caulerpa lentillifera* Inhibits Cell Proliferation and Induces Apoptosis of Human Glioblastoma Cells. กองบริหารการวิจัย. 2021;
 149. Stojkovic D, Drakulic D, Dias MI, Zengin G, Barros L, Ivanov M, et al. *Phlomis fruticosa* L. exerts in vitro antineurodegenerative and antioxidant activities and induces prooxidant effect in glioblastoma cell line. *EXCLI J*. 2022 Feb 14;21:387–99.
 150. Chang K-H, Yan M-D, Yao C-J, Lin P-C, Lai G-M. Honokiol-induced apoptosis and autophagy in glioblastoma multiforme cells. *Oncol Lett*. 2013 Nov;6(5):1435–8.
 151. Keshmiri-Neghab H, Goliaei B, Nikoofar A. Gossypol enhances radiation induced autophagy in glioblastoma multiforme. *Gen Physiol Biophys*. 2014 Jun 26;33(4):433–42.
 152. Bezerra DP, Ferreira PMP, Machado CML, de Aquino NC, Silveira ER, Chammas R, et al. Antitumour efficacy of *Piper tuberculatum* and piplartine based on the hollow fiber assay. *Planta Med*. 2015 Jan;81(1):15–9.
 153. Guerram M, Jiang Z-Z, Sun L, Zhu X, Zhang L-Y. Antineoplastic effects of deoxypodophyllotoxin, a potent cytotoxic agent of plant origin, on glioblastoma U-87 MG and SF126 cells. *Pharmacol Rep*. 2015 Apr;67(2):245–52.
 154. Emsen B, Aslan A, Togar B, Turkez H. In vitro antitumor activities of the lichen compounds olivetoric, physodic and psoromic acid in rat neuron and glioblastoma cells. *Pharm Biol*. 2016 Sep;54(9):1748–62.
 155. Kumar V, Radin D, Leonardi D. Probing the oncolytic and chemosensitizing effects of dihydrotanshinone in an in vitro glioblastoma model. *Anticancer Res*. 2017 Nov;37(11):6025–30.
 156. Aithal MGS, Rajeswari N. Bacoside A Induced Sub-G0 Arrest and Early Apoptosis in Human Glioblastoma Cell Line U-87 MG through Notch Signaling Pathway. *Brain Tumor Res Treat*. 2019 Apr;7(1):25–32.
 157. Li Z, Chen Y, An T, Liu P, Zhu J, Yang H, et al. Nuciferine inhibits the progression of glioblastoma by suppressing the SOX2-AKT/STAT3-Slug signaling pathway. *J Exp Clin Cancer Res*. 2019 Mar 29;38(1):139.
 158. Aroui S, Fetoui H, Kenani A. Natural dietary compound naringin inhibits glioblastoma cancer neoangiogenesis. *BMC Pharmacol Toxicol*. 2020 Jun 23;21(1):46.
 159. Chang K-F, Huang X-F, Chang JT, Huang Y-C, Lo W-S, Hsiao C-Y, et al. Cedrol, a sesquiterpene alcohol, enhances the anticancer efficacy of temozolomide in attenuating drug resistance via regulation of the DNA damage response and MGMT expression. *J Nat Prod*. 2020 Oct 23;83(10):3021–9.
 160. Silva AG, Silva VAO, Oliveira RJS, de Rezende AR, Chagas RCR, Pimenta LPS, et al. Matteucinol, isolated from *Miconia chamissois*, induces apoptosis in human glioblastoma lines via the intrinsic pathway and inhibits angiogenesis and tumor growth in vivo. *Invest New Drugs*. 2020 Aug;38(4):1044–55.
 161. Kamarudin NA, Nik Salleh NNH, Tan SC. Gallotannin-Enriched Fraction from *Quercus infectoria* Galls as an Antioxidant and Inhibitory Agent against Human Glioblastoma Multiforme. *Plants*. 2021 Nov 25;10(12).
 162. Mendanha D, Vieira de Castro J, Moreira J, Costa BM, Cidade H, Pinto M, et al. A New Chalcone Derivative with Promising Antiproliferative and Anti-Invasion Activities in Glioblastoma Cells. *Molecules*. 2021 Jun 3;26(11).
 163. Jalili-Nik M, Afshari AR, Sabri H, Bibak B, Mollazadeh H, Sahebkar A. Zerumbone, a ginger sesquiterpene, inhibits migration, invasion, and metastatic behavior of human malignant glioblastoma multiforme in vitro. *Biofactors*. 2021 Sep;47(5):729–39.

164. Oliva MA, Castaldo S, Rotondo R, Staffieri S, Sanchez M, Arcella A. Inhibiting effect of p-Coumaric acid on U87MG human glioblastoma cell growth. *J Chemother.* 2022 May;34(3):173–83.
165. Matsuura HN, Fett-Neto AG. Plant alkaloids: main features, toxicity, and mechanisms of action. In: Gopalakrishnakone P, Carlini CR, Ligabue-Braun R, editors. *Plant Toxins.* Dordrecht: Springer Netherlands; 2015. p. 1–15.
166. Pejin B, Simonovic M, Talevska A, Glumac M, Jakimov D, Kojic V. A neglected natural source for targeting glioblastoma. *Nat Prod Res.* 2021 Jun;35(11):1856–60.

UNDER PEER REVIEW

UNDER PEER REVIEW