

## Case Report

### Chondroma of the thoracic vertebrae base with abdominothoracic aorta involvement, a case report and review of the literature

#### ABSTRACT

It accounts for 2.8% of benign bone tumours and 12% of all bone tumours. 3.6% to 4% of chondroma are located in the spine representing 10% of all chondromas . It can originate from the vertebral bodies or the posterior arch and is described in patients between 5 and 78 years of age (1). We present the clinical case of a 60 year old woman, who consulted for dorso-thoracic pain in the belt, which was treated as a gastroduodenal ulcer, after a Pott's disease on the basis of an imaging diagnosis showing spondylodiscitis lesions with a paravertebral spindle D11-D12, then operated in a first time by posterior approach by laminectomy spondylodesis of D10 D11- L1 L2 and biopsy of the tumor whose anatomopathologicalexamination diagnosed a vertebral chondroma directing towards a total corporectomy by anterior or antero-lateral way. After the refusal of the second operation by the patient, she came back in consultation 3 months later with Frankel B paraplegia, anemia and cachexia. The MRI and CT show the evolution of the spondylolytictumor D10 D11 with debricolage of the osteosynthesis material and invasion of the thoracic aorta with its collaterals; the very high risk of damaging the Adam kiewicz artery and of postoperative paraplegia during the anterior management without endovascular material by the thoracic team compromised this second operative step. The low sensitivity of chemotherapy and the risk of aggravation of the lesion by the therapeutic doses of radiotherapy for this tumour made it directed in palliative care.

Comment [WU1]: what

Comment [WU2]: You mean around the belt line or what ?

Comment [WU3]: Rephrase this, maybe two or more sentences

Comment [WU4]: tic

Comment [WU5]: Please improve the grammar

Dorsal vertebral chondroma is a rare benign tumour that requires early complete resection to avoid the risk of thoracic aortic inversion that can increase complications and compromise the definitive treatment of this benign tumour.

**Keyword; chondroma, -dorsal vertebrae- thoracic aorta- surgery**

**Comment [WU6]:** This is too long to be an abstract for a case report.

## INTRODUCTION

Chondroma is a slowly growing benign cartilaginous tumor, and rarely affects the spine (2,3,4). According to its site of origin, chondroma can be subdivided into 2 groups: periosteal chondroma and enchondroma. Periosteal chondroma arises from the surface of periosteum and grows in an exophytic fashion (3); whereas, enchondroma originates from the medullary cavity and produces an expansile growth pattern(4,5,6) Histologically, they consist of benign nests of hyaline cartilage within the cancellous bone that resulted from failed migration of chondrocytes. Usually, the chondrocytes are arranged in a pseudolobular fashion and may be associated with ossified foci (7,8)

**Comment [WU7]:** Use a better word

## Clinical case presentation

MN 60A, housewife, domiciled in Douala Makepe, received on 12/06/2017 for back pain and paraparesis with spinal cord compression known and managed as Pott's disease based on imaging.

**Comment [WU8]:** MN, a 60 year old housewife

**Comment [WU9]:** presented

The onset of the condition in September 2015 was marked by back pain, radiating into the right abdominal hemibelt, which led to a consultation in a health facility where the clinical diagnosis of peptic ulcer disease was made.

**Comment [WU10]:** .....years prior to presentation

She was put on a proton pump inhibitor. When the pain persisted for 3 weeks, she changed doctors and consulted a gastroenterologist who performed a normal ultrasound and did a

**Comment [WU11]:** Was commenced on





Fig2 :MRI (14/03/2017): T12 compression and spinal cord compression, with paraspinal spindle

A compressive laminectomy with spondylodesis (fig2) and biopsy,



Fig 3: X-ray spondylodesis D9D10 -L1L2 D10

The postoperative period was marked by the recovery of neurological deficits, sphynterial functions and pain. She was discharged without a urinary catheter, continuing the anti-tuberculosis drugs started before the operation, while waiting for the results of the

bacteriological and anatomopathological analyses. The analysis of the bacteriological samples shows the presence of staphylococcus aureus sensitive to ofloxacin and amoxicillin clavulanic, and the anatomopathology shows a chondroma

Comment [WU15]: remove

A second surgery with complete corpectomy D12 was proposed to the patient, who was lost on the antituberculosis drugs started preoperatively although she was informed of the "uselessness" of this treatment.

Comment [WU16]: confusing

She came back in consultation on 13/09/18, for lumbodolgia, invalidating since 1 month of progressive installation, irradiating to the lower limbs in the type of cramp with paraesthesia of FM: 4/5, in a cachectic state, with a weight of 40 kg, normal heart, clear lung, flexible abdomen without organomegaly. The examination of the lymph nodes is free.

The CBC showed an anaemia of 6g /dl requiring a transfusion of 2ui of packed red blood cells.

The radiopulmonary shows free parenchyma, the abdominal echo shows nothing special.

Comment [WU17]: meaning ??????????????????  
?

Comment [WU18]: choose a better word combination

Vertebromedullary CT (fig1) and dorsolumbar MRI (fig2) show spinal cord compression by a voluminous T2 hypersignal mass with thoracic abdominal periaortic extension on the right and left, level T8-L1 with spinal instability due to tinkering with the screws of the osteosynthesis material following lysis of the D10-D11 pedicles.

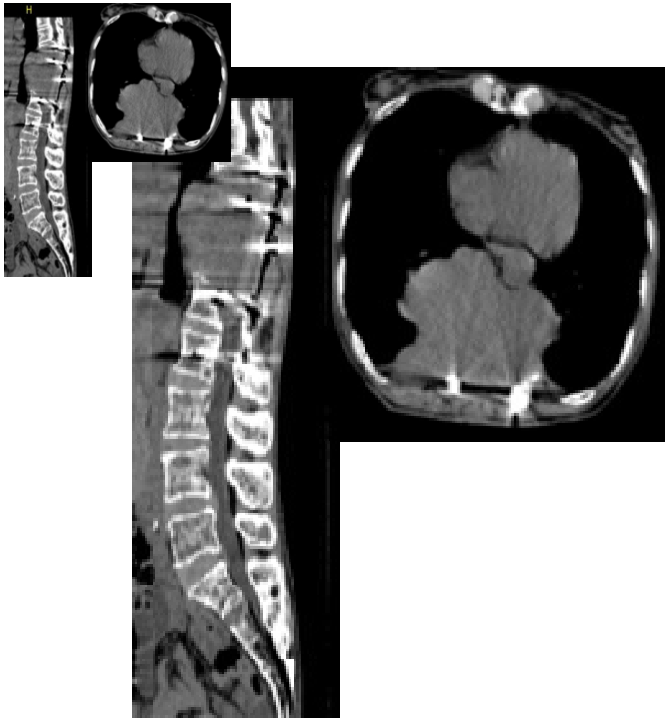


fig 4 : MRI image showing lesion of the

thoraco-abdominal artery

Comment [WU19]: describe the findings here

A discussion with the vascular surgeon concluded that in view of the invasion of the thoraco-abdominal aorta with probably the ADAM KEWIZT artery and the size of the lesion, an almost complete tumour resection surgery becomes impossible without locating and placing an endovascular stent of Adam Kewitz with the risk of paraplegia completed by the lesion of the thoraco-abdominal artery

After discussion at the multidisciplinary staff, the patient is put in palliative care and is DCD October 2020

Comment [WU20]: grammar can be better

## DISCUSSION

Benign cartilaginous tumors are classified into four histological types: chondroma, osteochondroma, chondroblastoma, and chondromyxoid fibroma(9,10,11,12)

Chondromas are benign tumor of cartilaginous tissue that is found frequently in the tubular bone of hands (13) , that is most common cartilaginous tumor and is equivalent to 5% of all bone tumors(14) . It is reported that men are twice more likely to have a chondroma than women, and lesions typically present between the third and fifth decades of life.1 Although chondromas occur predominantly in the small bones of the hands and feet, they can develop in any bone. They rarely occur in the spine, accounting for only 2% to 4% of all spinal tumors. they account for 2% of all spinal tumors and 2.6% of all benign bone tumors(12,14), .It is postulated that spinal chondroma is derived from hyperplasia of immature spinal cartilage with migration outside the vertebral axis or from metaplasia of the connective tissue in contact with the spine or the anulusfibrosus(9,15)

This tumor is described at all vertebral levels. the symptomatology is earlier in the cervico-dorsal regions than at the lumbar and sacral level (4,9,11,14)

#### Pathogeny

Chondroma is a benign tumor characterized by the formation of mature cartilage. Chondromas usually occur in a solitary fashion; however, they may affect many bones synchronously or sequentially in the setting of chondromatosis such as Ollier disease and Maffucci syndrome.(16) According to their site of origin, chondromas can be subdivided as enchondromas, periosteal chondroma, or soft tissue chondromas. Enchondromas have an intraosseous location and may grow compressing the dura mater; periosteal chondroma arise from cortical bone surface, and when they are located at asite distant from the bone they are referred to as soft tissue chondroma. Therefore, when a chondroma is located extradurally in the spinal canal, it may be difficult to differentiate between periosteal and soft tissue chondroma.(10,14)

Histologically, chondromas are composed of neoplastic chondrocytes dispersed within an abundant hyaline or myxoid background.1 Cells may reside in small nests referred to as

isogenous groups and occupy lucent spaces within their myxoid matrix called lacunae. Macroscopically, the aspect of the tumor is usually yellowish, soft, and easily separated from the dura mater. The extradural location of the tumor may be observed in any position, either lateral, dorsal, or ventral to the dural sac(14)

he clinical installation in our patient is progressive; it started with unilateral and then bilateral radiculalgia. The coincidence of epigastralgia, the discovery of peptic ulcer with positive helicobacter test at the fibroscopy and the aspect of the lesions in paravertebral spindle making evoked a pain of pott made delay the diagnosis chew this patient the installation and papareparesis and paraplegia are late signs of the medullar compression by the chondroma. This slow evolution is described by other authors, Neurological symptoms may develop gradually as the tumor grows and compresses the neural elements. (4,7,12)

The CT and MRI assessment makes several stages of clinical evolution of the affliction is correlated with the evolution of the tumor, the degree of spinal compression and expansion of anatomical structures around the vertebral body In the case of our patient, the growth of the tumor has led to invasion and compression of all the surrounding structures: backward, medullary compression, forward invasion of the abdominal and thoracic aorta, and most likely the lumbar bulge, ADAMKIEWICZ artery, upward and downward by an invasion of the vertebral bodies above and below the lesion causing the tinkering of the material of osteosyntheses.

The artery of Adamkiewicz is the primary supply to the lower two-thirds of the spinal cord and enters the spinal canal via an intervertebral foramen. Although it typically enters on the left from T9-L1, the artery can enter on either side from T5-L4. The T1(11) ; Occlusion or trauma of the artery of Adamkiewicz usually presents with signs of thoracic watershed ischemia-paraplegia with relative sparing of the sacral roots. Infarction in the anterior spinal

artery distribution results in dysfunction of the anterior two thirds of the cord, including the anterior horns, the spinothalamic tracts, and the corticospinal tracts; patients usually present with acute paraparesis and impaired bowel and bladder function. Sharp and sometimes circumferential pain at the level of the infarct is often described. Below the level of the lesion, temperature and pain sensation are lost, but vibration and position sense (posterior columns) are preserved (15).

The tumor of our patient had envied the abdomino thoracic aorta and let perceive the emergence of Aortic collaterals to D12 very evocative of this artery of the lumbar bulge; without endovascular stents, to operate this patient would expose it to irreversible sequels lesions more than the disease; the angiography being unavailable in our country.

Surgical excision of tumor is the recommended treatment for spinal chondroma although a case of spontaneous remission has been reported(17) The approach depends on the location of the tumor and the surgeon's experience, the posterior approach is the most used but remains very limited to have a complete resection of the tumor, it can be completed by the posterolateral or anterior approach, (9)

Complete en bloc surgical excision is generally recommended as the treatment of choice for cases with local and/or neurological symptoms(18). The goal of surgery is to establish a histological diagnosis, prevent sarcomatous degeneration, and preserve neurological function, In cases in which excision results in spinal instability, the spine must be instrumented or reconstructed (4). Chondromas, being benign pathology, seldom recur; and recurrence is usually associated with incomplete resection [17,18,19). Following complete resection, the recurrence rate of chondromas is less than 10% (20). According to Nora et al (1983)(21), recurrence of a chondroma always results in cases of incomplete removal. Regarding other modalities of treatment strategy, chemotherapy is ineffective; and the lesions are not responsive to radiotherapy(22). Radiotherapy is only considered for patients with

unresectable tumors (23). Malignant transformation is uncommon, occurring in only about 10% of solitary lesions and usually associated with syndromes such as Ollier's or Maffucci's (4,7,14,24).

Comment [WU22]: 10% malignant transformation cannot be said to be uncommon.

Our patient presented with spinal instability justifying spondylodesis, the total resection of the tumor in our patient required the posterior approach combined with the posterolateral or anterior approach, and a second biopsy to evaluate if there was malignant degeneration of the tumor. This evaluation could not be reviewed.

### Conclusion:

The chondroma is a benign tumor of slow evolution, spinal involvement is rare; at the dorsolumbar level, its evolution leads to a spinal cord compression of progressive installation. The injected dorsolumbar CT scan, the vertebral MRI scan and the angiography will allow to appreciate the lesions and the invasion of the neighboring organs, and more precisely the ADAMKEWICZ artery, prior to the operation.

The treatment of choice is a complete surgical resection of the tumor, the unstable tumors of the spine requires the material of osteosynthesis. The chondroma is not chemo or radio sensitive. It may recur and may degenerate into a chondrosarcoma.

Comment [WU23]: transform

### Bibliography

Comment [WU24]: Which one is this ????

1. 9-P Yapi , A Dweik, A De Muret, C B Sonier, J J Santini, J Laffont , Spinal cord compression due to thoracic spinal chondroma. A study of 2 cases and a review of the literature, Review J Neuroradiol, 1995 Mar;22(1):54-60.
2. McLoughlin GS, Sciubba DM, Wolinsky JP. Chondroma/Chondrosarcoma of the spine. Neurosurg Clin N Am. 2008;19(1):57-63.
3. Fahim DK, Johnson KK, Whitehead WE, Curry DJ, Luerssen TG, Jea A. Periosteal chondroma of the pediatric cervical spine. J Neurosurg Pediatr. 2009;3(2):151-6.

4. 1-Jing Guo, Ju-zhouGao, Lian-jinGuo, Zhi-xun Yin and Er-xingHe, Large enchondroma of the thoracic spine: a rare case report and review of the literature , Guo et al. BMC Musculoskeletal Disorders (2017) 18:155 DOI 10.1186/s12891-017-1519-z
5. Willis BK, Heilbrun MP. Enchondroma of the cervical spine. Neurosurgery. 1986;19(3):437–40.
6. Wani AA, Zargar JI, Ramzan AU, Malik NK, Lone I, Wani M. Isolated enchondroma of atlas. TurkNeurosurg. 2011;21(2):226-9.
7. -Rabi Khadka, Prarthana Pachhai, Ashim Gurung, Dipendra Kumar Shrestha, Sushil Krishna Shilpakar Case report Intraspinial periosteal chondroma in upper thoracic spine causing cord compression and myelopathy: A case report, International Journal of Surgery Case Reports 93(2022)106964
8. -Ahmet ÇET'NKAL, Göksel GÜVEN, Ali K'vanç TOPUZ, Ahmet ÇOLAK, Mehmet Nusret DEM'RCAN5 Aptullah HAHOLU,, Lumbar Spinal Chondroma Presenting with Radiculopathy: Case Report, Turkish Neurosurgery 2008, Vol: 18, No: 4, 397-399
9. Yoon Hwan Byun, Seil Sohn, Sung-Hye Park, Chun Kee Chung, Cervical Spine Chondroma Compressing Spinal Cord: A Case Report and Literature Review, Korean J Spine 12(4):275-278, 2015, <http://dx.doi.org/10.14245/kjs.2015.12.4.275>
10. Dong Hwan Kim, KyoungHyup Nam, Byung Kwan Choi, Inho Han , Lumbar Spinal Chondroma Presenting with Acute Sciatica , CASE REPORT , Korean J Spine 10(4):252-4, 2013 [www.e-kjs.org](http://www.e-kjs.org) pISSN 1738-2262/eISSN 2093-6729 [http](http://www.e-kjs.org)
11. Benjamin P. Liu , Eric J. Russell , Anatomy, Imaging, and Common Pain-Generating Pathologies of the Spine ,in Essentials of Pain Medicine (Fourth Edition), 2018

12. Paolo Gaetani, Flavio Tancioni, Paola Merlo, Laura Villani, Giovanni Spanu, , and Riccardo Rodriguez y Baena, SPINAL CHONDROMA OF THE LUMBAR TRACT: CASE REPORT , Surg Neural 1996;46:534-9.
13. Palaoglu S, Akkas O, Sav A: Chondroma of the cervical spine. Clin NeurolNeurosurg 90:253-255, 1988
14. Luis A. Robles, Greg M. Mundis , Chondromas of the Lumbar Spine: A Systematic Review , Global Spine Journal 2021, Vol. 11(2) 232-239
15. Richard L. Barbano ,Mechanical and Other Lesions of the Spine, Nerve Roots, and Spinal Cord, in Goldman's Cecil Medicine (Twenty Fourth Edition), 2012
16. Fahim DK, Johnson KK, Whitehead WE, Curry DJ, Luerssen TG, Jea A. Periosteal chondroma of the pediatric cervical spine. J NeurosurgPediatr. 2009;3:151-156.
17. L.I. Bland, McDonald JV, Chondroma of the lumbar spine, a rare cause of sciatica: case report, Neurosurgery 26 (1990) 685-687 (discussion 688).
18. D.K. Fahim, K.K. Johnson, W.E. Whitehead, D.J. Curry, T.G. Luerssen, A. Jea, Periosteal chondroma of the pediatric cervical spine, J. Neurosurg. Pediatr. 3 (2009) 151-156.
19. G.S. McLoughlin, D.M. Sciubba, J.P. Wolinsky, Chondroma/chondrosarcoma of the spine, Neurosurg. Clin. N. Am. 19 (1) (2008) 57-63.
20. M. Morard, N. De Tribolet, R.C. Janzer, Chondromas of the spine: report of two cases and review of the literature, Br. J. Neurosurg. 7 (1993) 551-556.
21. F.E. Nora, D.C. Dahlin, J.W. Beabout, Bizarre parostealosteochondromatous proliferations of the hands and feet, Am. J. Surg. Pathol. 7 (1983) 245-250.
22. D.C. Dahlin, in: Bone Tumors: General Aspects and Data on 6221 Cases, ed 3, Charles C Thomas, Springfield, IL, 1978, pp. 28-41.

23. J. Somers, L.P. Faber, Chondroma and chondrosarcoma, *Semin. Thorac. Cardiovasc. Surg.* 11 (1999) 270-277
24. A. Cetinkal, G. Güven, A. Topuz, A. Colak, M. Demircan, A. Haholu, Lumbar spinal chondroma presenting with radiculopathy: case report, *Turk. Neurosurg.* 18 (2008) 397-399.

UNDER PEER REVIEW