

## Case report

### **Laparoscopic management of an unusual paraovarian cyst complicated by extensive adhesions**

#### **Abstract**

A 15 year old girl who had previously undergone laparotomy for ileal torsion in infancy was investigated for chronic abdominal pain. Ultrasound and MRI scanning revealed a large tubular cyst on the right lateral pelvic wall, extending into the abdomen. This was managed laparoscopically by extensive adhesiolysis and total cystectomy . Laparoscopic management of large paraovarian cysts is well established in adult practice but experience in children is rare. The unusual configuration of this cyst, consequent to extensive adhesions from previous surgery, complicated the diagnosis. Its management by laparoscopy demonstrates the therapeutic capability of this approach under difficult conditions.

#### **Key Words:**

Paraovarian Cyst, Adhesions, Paediatric, Laparoscopic.

#### **Introduction**

Paraovarian cyst needs to be differentiated from ovarian cyst, as it is not thought to behave in the same way both clinically and biologically. Paraovarian cyst accounts for only 5–20% of all adnexal masses. Paraovarian cyst originates in the broad ligament between the fallopian tube and ovary [13]. Giant and paraovarian cysts are unusual masses that are usually treated by laparotomy. The safety of laparoscopic management of benign paraovarian cysts has been demonstrated, but it is believed that the size of benign paraovarian cysts is a limiting factor for

laparoscopic surgery [14]. We report a case study on laparoscopic management of an unusual paraovarian cyst complicated by extensive adhesions.

### ***Case Report***

A fifteen year old girl with Gilbert syndrome presented with chronic lower abdominal pain. She was suspected to be suffering from low grade adhesive bowel obstruction secondary to surgery as a neonate. Ultrasonography (figure 1) and magnetic resonance imaging (Figures 2 & 3) demonstrated a simple, tubular, cystic mass in the right pelvic wall extending to the level of the umbilicus.

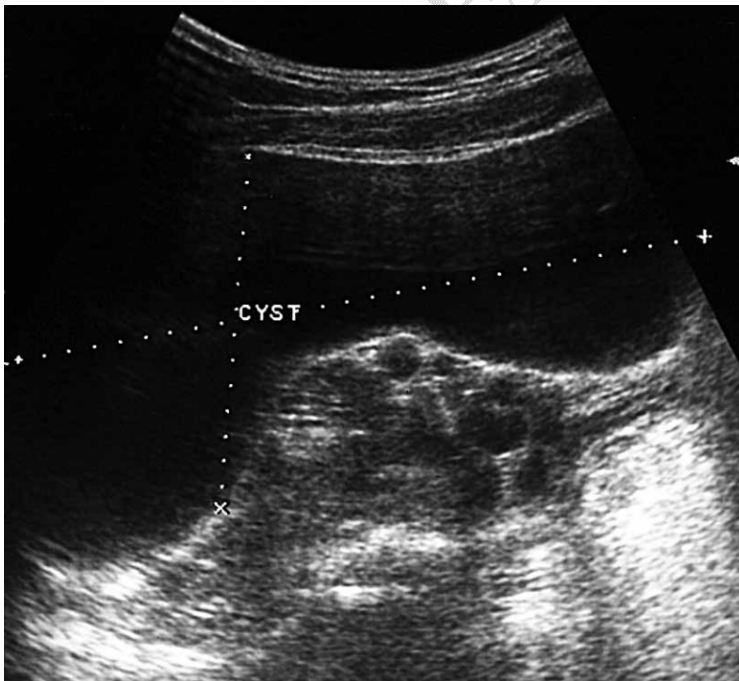


Fig 1. Ultrasonography demonstrating the length and depth of the paraovarian cyst.



Fig 2. MRI Scan in coronal view demonstrating the vertical extent of the parovarian cyst.

UNDER PEER REVIEW



Fig 3. MRI Scan in sagittal view showing depth and superior extent of cyst which reaches to level of umbilicus.

The exact origin of the cyst was disputed and tumour markers including beta human chorionic gonadotrophin and alpha fetoprotein levels were normal.

In the neonatal period the patient had an ileal torsion and, consequently a significant part of her distal small bowel had been resected through a transverse infra-umbilical incision and a stoma fashioned. The stoma was reversed at one month of age and an ileocolic anastomosis performed.

In view of these findings the patient underwent laparoscopic surgery. A three port technique was employed with a 10mm umbilical camera and two 5mm working ports

in the left iliac fossa and in the left subcostal region. Triangulation of working to camera port was not possible as both needed to be placed well away from the previous laparotomy incision and the mass. Extensive adhesiolysis, using principally endoshears, was necessary in order to adequately visualise the cyst which was found to be intimately attached to the right fallopian tube. This was aspirated before being comprehensively resected together with the end of the fallopian tube. The specimen was retrieved through the 10mm camera port under guidance of a 5mm camera placed in one of the working ports.

The patient enjoyed an uncomplicated postoperative recovery. Histology confirmed a benign fimbrial cyst which had been completely excised.

### ***Discussion***

Paraovarian cysts are histologically divided into three types of which the largest proportion are mesothelial (68%). The majority of the remainder (30%) arise from the paramesonephric duct elements. Two percent arise from the mesonephric or Wolffian duct.<sup>1</sup> These cysts account for 10% of adnexal masses and are most common in the third and fourth decades of life.<sup>2</sup>

Although the majority of these cysts are incidentally found they can cause abdominal pain and menstrual problems or present acutely with torsion or haemorrhage.<sup>3</sup> Some are also recognised to go on to cause infertility and to undergo neoplastic transformation.<sup>4</sup>

The laparoscopic management of ovarian cysts is well established in adults, with even large cysts which extend above the umbilicus being amenable to minimally invasive resection<sup>5,6</sup>. Cystic ovarian lesions have even been laparoscopically resected in the neonatal population<sup>7</sup>, although a high conversion rate is associated with this approach.

<sup>8</sup> The laparoscopic experience with parovarian cysts on the other hand is however limited.

Laparoscopic adhesionolysis has been employed in the treatment of adult small bowel obstruction occurring independently of other pathology.<sup>8,9</sup> Success rates of up to 92% have been reported in some series.<sup>10</sup> Yet other adult studies which due to the complexity of the cases, have reported a 20% conversion rate.<sup>11</sup> In the paediatric population there are few reports of laparoscopic adhesionolysis and conversion rates are higher.<sup>12</sup>

The previous surgery in this patient created several difficulties in her management. Firstly, her symptoms were initially attributed to the presence of adhesions and it was only on imaging that another cause for her pain became apparent. Secondly, dense pelvic and abdominal adhesions caused the cyst to grow in the plane of least resistance hence assuming a tubular shape. This unusual configuration caused a diagnostic dilemma which was resolved by laparoscopy. The dense adhesions stemming from the previous interventions required careful and tedious division before the cyst could be adequately visualised and appropriately managed. Aspiration of the cyst was a useful step in creating the space which facilitated handling and dissection. Once separated from surrounding structures the origin of the cyst from the right fallopian tube was clearly evident allowing for a comprehensive resection.

This experience reaffirms the potent diagnostic and therapeutic capability of the laparoscope for abdominal pathology in children. In addition it demonstrates how neither a history of significant previous surgery nor the magnitude of a parovarian cyst should be a deterrent to utilising the laparoscopic approach.

### ***References***

1. Pepe, F, Panella M, Pepe G, Panella P. Paraovarian Tumours. *Eur J Gynaecol Oncol* 1986; 7:159-61.
2. Berlin SC, Morrison SC, Myers MT, Sivit SJ, Weinert DM(1997) Paediatric Case of the Day. Parovarian Cysts. *Am J Roentgenol* Jul;169(1):306-310
3. Mahomed A, Jibril A, Youngson GG. Laparoscopic Management of a large Ovarian Cyst in the Neonate. *Surgical Endosc*(1998) 12: 1272-4
4. Samaha M, Woodruff JD. Paratubal cysts: frequent, histogenesis and associated clinical features. *Obstet Gynaecol* 1985;65:691-4.
5. Sagiv R, Golan A, Glezerman M. Laparoscopic management of extremely large ovarian cysts. *Obstet Gynaecol* 2005;105(6):1319-22
6. Takedo A, Manabe S, Nakamura H. Laparoscopic surgery in 12 cases of adnexial disease occurring in girls aged 15 or younger. *J Min Inv Gynaecol* 2005;12(3):234-40.

7. Macarthy M, Mahomed AA. Laparoscopy in the diagnosis and management of a complicated paraovarian cyst. *Surg Endosc*. 2003; 17(10):1676-7.
8. Dobremez E, Moro A, Bondonny J, Vergnes P. Laparoscopic treatment of ovarian cysts in the newborn. *Surg Endosc*. 2003;17(2) 328-32
9. Tsumura H, Ichikawa T, Murakami Y, Sueda T. Laparoscopic adhesionolysis for recurrent postoperative small bowel obstruction. *Hepato-Gastroenterol* 2004;51(58):1058-61
10. Borzellino G, Tasselli S, Zerman G, Pedrazzani C, Manzoni G. Laparoscopic approach to postoperative adhesive obstruction. *Surg Endosc* 2004;18(4):686-90
11. Swank DJ, Van Erp WF, Repelear VD, Hop WC, Bonjer HJ, Jeekel H. A prospective analysis of predictive factors on the results of laparoscopic adhesionolysis in patients with chronic abdominal pain. *Surg Lap Endosc Perc Tech* 2003;13(2):88-94.
12. Van Der Zee D, Bax NM. Management of adhesive bowel obstruction in children is changed by laparoscopy. *Surg Endosc* 1999;13(9):925-27.
13. Durairaj A, Gandhiraman K. Complications and management of paraovarian cyst: a retrospective analysis. *The Journal of Obstetrics and Gynecology of India*. 2019 Apr 2;69:180-4.
14. Cevrioglu AS, Polat C, Fenkci V, Yilmazer M, Yilmaz S, Dilek ON. Laparoscopic management following ultrasonographic-guided drainage in a patient with giant

paraovarian cyst. Surgical Endoscopy And Other Interventional Techniques. 2004  
Feb;18:346-.

---

UNDER PEER REVIEW