

Forecasting the risk factors of COVID-19 through AI feature fitting learning process (FfitL-CoV19)

Abstract: In the present day situation, decreasing COVID-19 risk elements also can moreover need to probably check the abilities to provide and test AI-primarily based total models for COVID-19 severity prediction. This work aimed to select the maximum affecting abilities of COVID-19 chance elements and enhance the functionality of the AI method for COVID-19 chance elements primarily based totally on the chosen abilities. In this study, proposed a method for determining whether or not a patient has a chance of contracting COVID-19 by making use of an AI characteristic that becomes incorporated into the feature-fitting learning process (FfitL-CoV19), while also taking a number of symptoms into consideration. Textual data has been divided into traditional and ensemble system learning algorithms as part of the AI characteristic that is becoming a part of the learning process that is being offered. Feature engineering has become completed the use of the AI technique and functions skills have been provided to conventional and ensemble system learning classifiers. The hybrid approach that was made is a big step up from what had been done before, and it can be very effective in all situations. Using the method shown, a structural model could be made that shows how COV-19 infections can spread and cause more infections.

Keywords: characteristic fitting, risk factor, feature, ensemble learning, infection.

I. INTRODUCTION:

The pandemic has influenced health problems and maximum human beings' lives—socially and economically [1] [2]. Radiologists are learning to identify COV-19 instances based on chest CT scan image exams, as it is manual and time-consuming, because of the widespread COV-19 and having to examine a lot of cases in less time. This widespread has increased the infection rate at high-risk levels, causing scientists to make it unable to find it manually. There is a need for the development of learning techniques that can analyze and identify the presence of COV-19 severity and can able to distinguish between different COV-19-related disease presences, but it is difficult to have a better and faster method to analyze them at that moment.

There is a lot of use for chest radiology evaluations, and it's a cheap way for digital diagnostics. There is a dearth of high-quality, publicly available, intelligent datasets. The use of pulmonary X-rays in a wide variety of medical settings presents substantial diagnostic and identification challenges that need the use of therapeutic aids. For very large collections of x-ray pictures, the dearth of identifying features makes interpretation difficult. While the prevalent use of lung diagnostic imaging techniques [19] in contemporary medical amenities has improved adaptability and sped up medical imaging evaluations, it has also boosted the economic development of practitioners with specialized skills to characterize the x-ray images in line with the particular patterns reported.

In this study, an observation of the AI method for COV-19 assessment through the utilization of chest X-ray and CT images are identified. To improve the learning method, the researchers have to analyze all the symptoms of contagions related to COV-19 infections by predicting its varying parameters globally and scientifically and should be able to provide better decision-making standards through a defined in a better way effective analysis action on identified symptoms. These can be accomplished through improved scientifically proven mathematical models that have to be developed.

The facts include clinical opinions within the shape of textual content in this paper; we're classifying that visual information into a group of illnesses regions such that it could assist in detecting coronavirus from in advance clinical symptoms. Artificial Intelligence (AI) is becoming a better learning model to research COV-19 symptoms, which has become supporting research to radiologists and scientists, providing a better improvement in healthcare scan data analysis and providing improved patient monitoring care methods. AI plays a significant role in providing the best solution for COV-19 symptoms. Through AI methods, clinical COV-19 data of chest CT images are analyzed based on the available dataset and scan images, doing machine learning approach and

data support vector machine analysis and these can be applied to test the COV-19 risks at potential levels at different levels of critical levels.

By analyzing Computed tomography and pulmonary X-ray pictures from a specific data set and comparing them with specified models, we were able to utilize an ML technique to identify language based on humans with non-infected and Cov-19 affected cases (InceptionV3-and-DensNet).

The remaining paper is categorized into sections: sect 2 provides a previous works. The recommended work is analyzed in sect 3. The implementation analysis are discussed in sect 4. And the conclusions of this work are discussed in sect 5 with the future scope.

II. Previous Works:

Several researchers have proposed automated COV-19 screening through the technique of reading chest radiography or CT images, figuring out the path morphological changes due to Covid-19 within the patient's chest. Other authors, instead, have recommended the evaluation of coughing or respiratory signals, to research the presence of changes because of the COV-19 infection. A few previous types of research, instead, have indicated clarifications for the detection of COV-19 problems primarily based totally on an evaluation of voice samples.

An AI approach is used for the epidemiologic susceptibility infection (SI) model to estimate the spread of COV-19 [3]. The SI approach and its intensification, the SIR model, are both standard outbreak models for modeling and forecasting the diffusion of contagious diseases; in these models, S stands for the form of vulnerable people, I denote for the form of contaminated individuals, and R stipulates the recovered cases.

The consequences of COV-19 dysfunction on human lungs are discussed by the authors in [5]. Next, the authors presented a COV model to extract the classification capabilities of CNN [6].

A DTL (deep transfer learning) of the CNN and RNN Models was developed and assessed [18] to detect and identify COV-19 X-ray chest images. Each improved outcome is achieved using the suggested models. When compared to other models, our model's prediction using CNN, COV-19 is the most accurate and precise. Both the accuracy and precision scores are quite high, at 97.7% and 96.4% respectively. As the gap between the two (training and validation) narrowed, the optimal training procedure emerged. As the F-measure rose to 0.97, a reliable COVID-19 detector was developed. The model performed quite well according to AUC metrics, reaching 0.9. The measure AUC's outcome is shown in Figure 1. As a result, the x-ray data-trained COV-19 diagnostic model delivers higher performance metrics

While ML has only been employed in a small number of COV-19 investigations [8, 9], which has been used to develop a model that compares the characteristics of healthy individuals and affected SARS-CoV-2 victims. The identification of COV-19, its forecasting, and the development of countermeasures [12, 13] are the subject of other studies [10, 11]. In many instances, additional resources are not required for an assessment since all relevant information is already included in the patient's medical record. Using a collection of training, validation, and test instances, [10] develops a machine learning model to predict how an infection's severity will change over time. An SVM set of algorithms is used for prediction, and a genetic set of algorithms (GA) is used in the feature choice stage. In [11], we employed ML to explore the connection between distinct cardiac signs and symptoms and the severity of COV-19 patients [12]. However, some studies show that individuals are less likely to follow preventative recommendations such as isolation [13], good cleanliness [14], and immunization [15].

III. Proposed Model:

Contributions of this work are summarized in the subsequent points:

- (i) Present a dataset built based totally, mostly on different scientific features consisting of the patient's medical history.

- (ii) Feature-fitting into technique based totally, mostly on features function assessment in the detection of COVID-19 virus
- (iii) Propose a risk and infection severity prediction method for COVID-19 patients within the early level of detection.

A. AI function fitting into a learning process:

In this section, an ANN-optimization hybrid model for Extraction Of features is suggested. This model combines the advantages of both methods. The predicted approach is evaluated to the pre-trained InceptionV3 and DensNet for making diagnoses on COVID-19 instances.

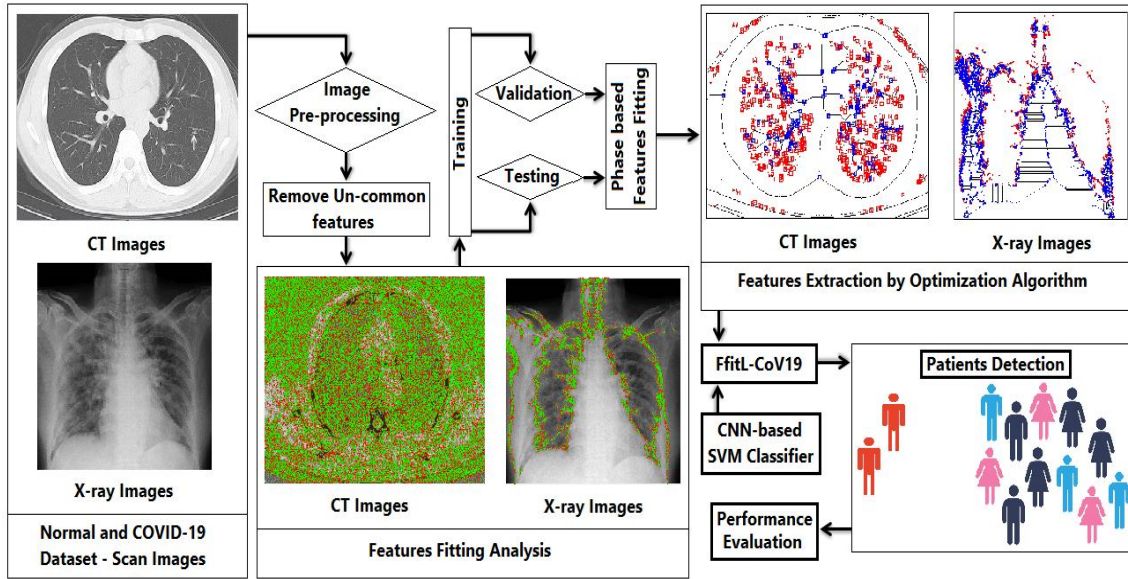


Figure 1: Proposed FfitL-CoV19 process.

Algorithm 1: Features Extraction by Optimization Algorithm for FfitL-CoV19 process

Input: Features fitting analysis-CT images (CT_i) and X-ray images (XR_i), Phase based Features Fitting-trained images (T_i), learning rate (L_r), population size (P_s), number of iterations (N_i), and the cumulative number of cases (C)

Output: Trained FfitL-CoV19 model to classify COVID-19 images

Begin

Phase-based Features Fitting:

\hat{F} [CT_i : XR_i]: initialize \hat{F} as a fitting value

For each image

Do process $P=SVM(N_i, P_s, L_r)$

for: $i=1: N_i$

for: $j=1: P_s$

Update-the-feature-fitting-parameter through L_r

end-for:

end-for:

Find the best \hat{F} :

for: $i=1: N_i$

for: $j=1: P_s$

Assign T_i in the range of $[0: N_i]$

```

If  $\hat{F} < T_i$ , then
Extract the features with  $T_i$  and do-again-Training process
Else If  $\hat{F} > T_i$ , then
Extract the features with  $\hat{F}$  and perform the CNN process
Else  $\hat{F} = T_i$ , then
Optimize the features with the FfitL-CoV19 method
end-if:
end-for:
end-for:
Update-the- $\hat{F}$ -and-the FfitL-CoV19 values
FfitL-CoV19 method:
for: each  $\hat{F}$  feature
Do method  $M = FfitL(\hat{F}, P_s, L_r, S(t), I(t), R(t), D(t))$ 
Learning rate:  $L(\hat{F}, \tilde{F}) = [(1 - \hat{F}) \log(1 - \tilde{F}) - \sum \hat{F} * \log \tilde{F}]$ 
where  $\tilde{F}$  are the predicted features
Features Fitting parameter:  $Ffit = (P_s * \tilde{F}) + L_r$ 
Classify risk factor:  $\gamma(FfitL) = [C\Delta I(t)^T C\Delta I(t)]^{-1} \min C\Delta I(t)^T C\Delta D(t)$ 
Classify recovery rate:  $\beta(FfitL) = [C\Delta I(t)^T C\Delta I(t)]^{-1} \min C\Delta I(t)^T C\Delta R(t)$ 
The optimal value of infection rate:  $\alpha = [w_i \gamma(FfitL) : w_j \beta(FfitL)]$ 
where  $w_i$  and  $w_j$  are weighing factors of features
Features Detection:  $FfitL = C\Delta I(t)^\alpha C\Delta R(t)^\beta \min C\Delta D(t)^\gamma$ 
Update the FfitL
end
end
end
end

```

IV. Results and Discussions:

Table 5 showed how recommended measures of performance in comparison to those of existing works.

A. Dataset Evaluation

Table 1 shows the datasets used and the description of the dataset portioning is shown in Table 2.

Table 1: computed tomography scans and X-rays of COV-19 patients and healthy individuals

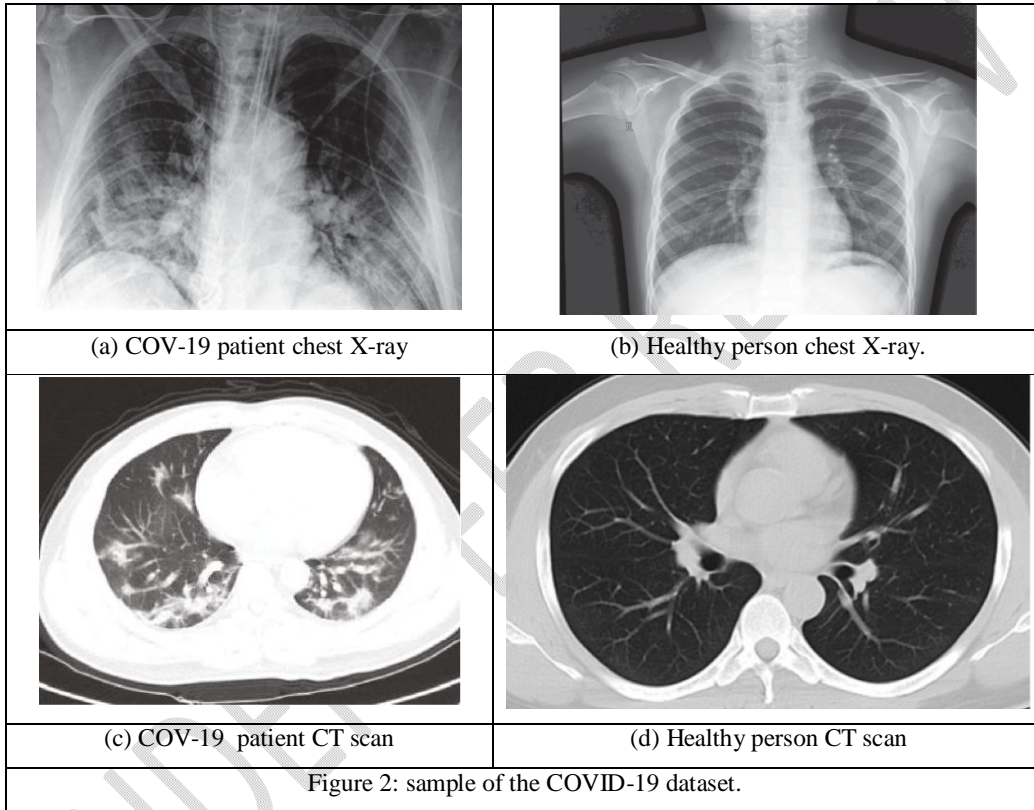
Type	Dataset Name	Feature Fitting Data	COV-19	Non-COV-19
	COV-19 infected Vs normal cases X-ray images	Ffit_1	1011	1308
X-ray	Auxiliary data X-ray images of COV-19	Ffit_2	1392	789
	COV-19 X-ray images	Ffit_3	223	232
	COV-19 Vs normal Computed tomography chest images	Ffit_4	337	365
CT-scan	Computed tomography scan images of SARS-COV-2	Ffit_5	621	1166
	COV-19 Computed tomography scan images	Ffit_6	61	80

Table 2: Dataset portioning

Feature Fitting Data	COV-19				Non-COV-19			
	T(Training)	V (Validation)	Te (Testing)	Total	T	V	Te	Total
Ffit_1	720	146	145	1011	912	198	198	1308
Ffit_2	948	210	234	1392	470	159	160	789
Ffit_3	155	32	36	223	156	39	37	232

Ffit_4	245	43	49	337	265	51	49	365
Ffit_5	389	102	130	621	689	210	267	1166
Ffit_6	34	15	12	61	49	19	12	80

This research work developed an AI-based CoV19 feature prediction model, which has been tested with original and data-augmented datasets. All the scan images are resized based on the feature size of 256x256 pixels with a change in aspect ratio, compare to the original. Figure 2 (a) and (b) illustrate the scan images of CoV-19 contaminated patient and a healthy patient, respectively. The CoV19 detection model is a combination of the proposed model FVisL-CoV19 and VGG16, through AI and they are used to detect CoV19 using scan images. Figures 2 (c) and (d) illustrate the scan images of CoV-19 infected patient and a healthy patient, respectively. The collected scans of scans were split into a training and a testing set, which are illustrated in table 2.



B. Performance Evaluation:

The recommended model is to identify CoV19 and non-CoV19 samples based on the performance metrics illustrated in Table 3: Prediction metrics.

Table 3: Performance metric for prediction

Performance metric	Definition
True -tive (TN)	Appropriately identified as -tive
True +tive (TP)	Appropriately identified as +tive
False -tive (FN)	Imperfectly identified as -tive
False +tive (FP)	Imperfectly identified as +tive

Based on Table 3, the evaluation metrics formulae are illustrated in Table 4.

Table 4: Evaluation metrics

Evaluation metric	Definition
A (in %) (Accuracy)	$\frac{TP + TN}{TP + FP + TN + FN}$
P (in %) (Precision)	$\frac{TP}{TP + FP}$
R (Recall)	$\frac{TP}{TP + FN}$
F1 (F1 score)	$2 * \frac{R * P}{R + P}$

Table 5: Assessment of the New Models' Performance Compared with previous one

Method	P	R	F1	A
InceptionV3 [16]	0.83	0.85	0.84	0.88
DensNet [17]	0.92	0.91	0.92	0.91
Proposed <i>FfitL</i>	0.94	0.93	0.94	0.93

Table 5 suggests that each parameter of the assessment values, specific accuracy, is over 0.88. Therefore, the Proposed *FfitL* is a methodical model to find COV-19 and non-COV-19 features. In this work, find that the *FfitL*-CoV19 model performs very well when compared to the others, and we propose it as a replacement for the existing *FfitL* models.

V. Conclusions:

In this paper, the occurrence of COVID-19 is investigated using AI methods of investigation, with the suggested characteristic assessment serving as the primary metric for doing so. Finding the most trustworthy method and enhancing the overall model-based assessment have been the goals. The suggested classifier was evaluated on the basis of its ability to classify images into distinct categories, and it was shown to have superior effects by virtue of its 94 percent precision, 93 percent recall, 94 percent f1-score, and 93 percent accuracy. In future work that makes use of artificial intelligence's multiplicative nature and the infectious disease-spreading nature of COV-19, the construction of a structural model to detect the infectious disease-spreading nature of COV-19 and strategies to inhibit the spread of COV-19 will be considered.

VI. References

1. P. Scarabaggio, R. Carli, G. Cavone, N. Epicoco, and M. Dotoli, "Modeling, estimation, and analysis of covid-19 secondary waves: the case of the italian country," in 2021 29th Mediterranean Conference on Control and Automation (MED). IEEE, 2021, pp. 794–800.
2. S. K. Dey, A. Howlader, and C. Deb, "MobileNet mask: a multi-phase face mask detection model to prevent person-to-person transmission of SARS-CoV-2," in Proceedings of International Conference on Trends in Computational and Cognitive Engineering, pp. 603–613, Springer, Dhaka, Bangladesh, December 2021.
3. Sridhar and D. Gurdasani, "Herd immunity by infection is not an option," Science, vol. 371, no. 6526, pp. 230-231, 2021.
4. M. Piraveenan, S. Sawleshwarkar, M. Walsh et al., "Optimal governance and implementation of vaccination programmes to contain the COVID-19 pandemic," Royal Society Open Science, vol. 8, no. 6, Article ID 210429, 2021.
5. S. Bouaafia, S. Messaoud, R. Khemiri, and F. E. Sayadi, "COVID-19 recognition based on deep transfer learning," in Proceedings of the 2021 IEEE International Conference on Design & Test of Integrated Micro & Nano-Systems (DTS), pp. 1–4, IEEE, Sfax, Tunisia, July 2021.

6. I. Khriji, A. Ammari, S. Messaoud, S. Bouaafia, A. Maraoui, and M. Machhout, "COVID-19 recognition based on patient's coughing and breathing patterns analysis: deep learning approach," in Proceedings of the 2021 29th Conference of Open Innovations Association (FRUCT), pp. 185–191, IEEE, Tampere, Finland, May 2021.
7. Sedik, M. Hammad, F. E. Abd El-Samie, B. B. Gupta, and A. A. Abd El-Latif, "Efficient deep learning approach for augmented detection of Coronavirus disease," *Neural Computing & Applications*, vol. 18, pp. 1–18, 2021.
8. M. M. Ahsan, M. T. Ahad, F. A. Soma et al., "Detecting SARSCoV- 2 from chest X-ray using artificial intelligence," *IEEE Access*, vol. 9, pp. 35501–35513, 2021.
9. Narin A, Kaya C, Pamuk Z (2020) Automatic detection of coronavirus disease (covid-19) using x-ray images and deep convolutional neural networks. arXiv preprint arXiv:2003.10849
10. Apostolopoulos ID, Mpesiana TA (2020) Covid-19: automatic detection from x-ray images utilising transfer learning with convolutional neural networks. *Phys Eng Sci Med*:1
11. ChungM, Bernheim A, Mei X, Zhang N, Huang M, Zeng X, Cui J, Xu W, Yang Y, Fayad ZA, Jacobi A (2020) CT imaging features of 2019 novel coronavirus (2019-nCoV). *Radiology* 295(1):202–207
12. Cohen JP, Morrison P, Dao L (2020) COVID-19 image data collection. arXiv preprint arXiv:2003.11597
13. Hemdan EED, Shouman MA, Karar ME (2020) Covidx-net: a framework of deep learning classifiers to diagnose covid-19 in xray images. arXiv preprint arXiv:2003.11055
14. Ilyas M, Rehman H, Nait-ali A (2020) Detection of Covid-19 from chest X-ray images using artificial intelligence: an early review. arXiv preprint arXiv:2004.05436
15. Jacobi A, Chung M, Bernheim A, Eber C (2020) Portable chest Xray in coronavirus disease-19 (COVID-19): a pictorial review. *Clin Imaging* 64:35–42
16. V. Shah, R. Keniya, A. Shridharani, M. Punjabi, J. Shah, and N. Mehendale, "Diagnosis of COVID-19 using CT scan images and deep learning techniques," *Emergency Radiology*, vol. 49, pp. 1–9, 2021.
17. Grewal M, Srivastava MM, Kumar P, Varadarajan S (2018) Radnet: Radiologist level accuracy using deep learning for hemorrhage detection in ct scans. In: *IEEE 15th International symposium on biomedical imaging (ISBI 2018)*. IEEE, pp 281–284.
18. Kakulapati, V et al., Feature Extraction of Coronavirus X-Ray Images by RNN, Correlational Networks, and PNN. *Artificial Intelligence for COVID-19. Studies in Systems, Decision and Control*, vol 358. Springer, Cham. https://doi.org/10.1007/978-3-030-69744-0_15
19. Guo T, Fan Y, Chen M, et al. Cardiovascular Implications of Fatal Outcomes of Patients With Coronavirus Disease 2019 (COVID-19). *JAMA Cardiol.* 2020;5(7):811–818. doi:10.1001/jamacardio.2020.1017