

## **Original Research Article**

# **Clinical outcomes of surgery for age-related cataract with intraocular lens implantation in two hospitals in north-central Nigeria**

---

### **ABSTRACT**

**Aims:** The study aimed to assess the post-operative presenting visual acuity (PVA) and best-corrected visual acuity (BCVA) from six weeks and above post-surgery, of patients operated for age-related cataract with biometry-calculated IOL power and available IOL power implantation, in two hospitals in Jos, Nigeria.

**Study design:** Retrospective cross-sectional survey.

**Place and Duration of Study:** Eye units of two mission Hospitals in Jos namely; Bingham University Teaching Hospital and the Faith Alive foundation Hospital, between June and August 2021.

**Methodology:** Patients aged 40 years and above, who had undergone surgery for age-related cataract in the preceding 18 months in two hospitals in Jos and were six weeks or more post-surgery were consecutively enrolled into the study after obtaining informed consent. Socio-demographic data and surgical history were obtained from patients and their surgical records. The PVA and BCVA were assessed and categorized based on World Health Organization guidelines.

**Results:** A total of 87 patients were examined within the study period. Post-operative PVA was good ( $\geq 6/18$ ) in 32 (36.8%), borderline ( $< 6/18-6/60$ ) in 41 (47.1%) and poor ( $< 6/60$ ) in 14 (16.1%) participants. After refraction, the proportion of good outcomes increased to 78.2% with only 8.1% of outcomes remaining poor. Biometry-calculated IOL power and available IOL power use did not significantly influence visual outcome ( $P=0.645$  and  $P=0.146$  for PVA and BCVA respectively).

**Conclusion:** Majority of participants had post-operative PVA in the borderline category with residual uncorrected refractive error as the principal cause. Regardless of the IOL power implanted, surgery for age-related cataract enhanced patients' vision. This study has shown that the presence of biometry is a guarantee of refractive success. Hence, refractive outcome audits are essential.

*Keywords: Age-related cataract, outcome, intra-ocular lens.*

## **1. INTRODUCTION**

The use of available intraocular lens (IOL) power in cataract surgery, often a single power of IOL for all patients is not uncommon. Especially in settings where biometry equipment is either unavailable or non-functional, and comprehensive IOL banks are not maintained. The

negative impact of this practice is, however, unclear. Continuous monitoring of clinical outcomes of cataract surgery in these settings is essential for sustained improvement. In Sub Saharan Africa, about 60% of cataract surgical facilities either do not have functioning biometry equipment's or they are non-functional and many lack comprehensive intraocular lens (IOL) banks.<sup>1</sup> Consequently, the use of standard or available IOL (A-IOL) power as against pre-surgery biometry-calculated IOL (BC-IOL) power has become common practice in this region.<sup>2,3,4,5</sup>

Globally, audit of refractive outcomes of cataract surgery with accurately calculated IOL power have consistently demonstrated better visual outcomes and reduced post-operative spectacle dependence.<sup>6,7</sup> However, because the prevalence of refractive error (RE) has been reported to be low in Sub-Saharan Africa (SSA), it is not clear if the benefits of biometry are as large as in other populations with higher prevalence of RE.<sup>8,9</sup> The best published results in terms of post-operative presenting visual acuity (PVA) from a routine hospital cataract service in SSA that we are aware of utilized a standard 22 diopter lens for every patient.<sup>10</sup> Although the low prevalence of RE in SSA may be genetic in part with a substantial environmental component, the move to urbanization of the African population is expected to be accompanied by a rise in RE prevalence. Therefore, the absence of biometry equipment in some African cataract surgical services, is likely to become more important as time goes on. Good PVA results using A-IOL in past series cannot, therefore, guarantee that similar stable refractive outcomes will be found in more urbanized, African population in the future. Cataract remains the leading cause of blindness in SSA and world over.<sup>11,12</sup> As efforts are being made to increase the cataract surgical coverage and cataract surgical rate, it is important that equal attention be given to improving the quality of cataract surgery. In resource-limited settings, necessary attention may not be given to cataract surgical outcomes until substantial evidence of a need for improvement is generated. Reliable evidence from low- and middle-income countries identifying factors that cause clinical outcome of cataract surgery to be less than ideal and the specific steps that can be taken to address these factors are insufficient.

This study was undertaken to evaluate the impact of biometry on PVA in a setting where uptake of glasses following cataract surgery is low. If the use of biometry is found to produce significantly better PVA outcomes for patients, this would increase the incentive for resource constrained cataract service providers to invest in biometry equipment, its maintenance and the continued stocking of a full range of IOL powers.

## **2. MATERIAL AND METHODS**

We constructed a retrospective cohort of all patients, aged 40 years and older who had undergone surgery for age-related cataract in two hospitals in Jos, north-central Nigeria between November 2019 and April 2021.

### **2.1 Inclusion and exclusion criteria**

Eligible participants were patients who had undergone first eye surgery with posterior chamber intraocular lens implantation in the 18-month period, and who were therefore six weeks or more post-surgery at the time of study. The data collection period was June-August 2021. Patients were excluded from the study who: did not give consent, were younger than 40 years, with pre-operative vision of no light perception, who had secondary or complicated cataract, who had undergone bilateral cataract surgery or combined procedure (e.g., cataract surgery with filtration surgery), who did not have posterior chamber intra ocular lens implantation, whose telephone contacts were not available in the surgical

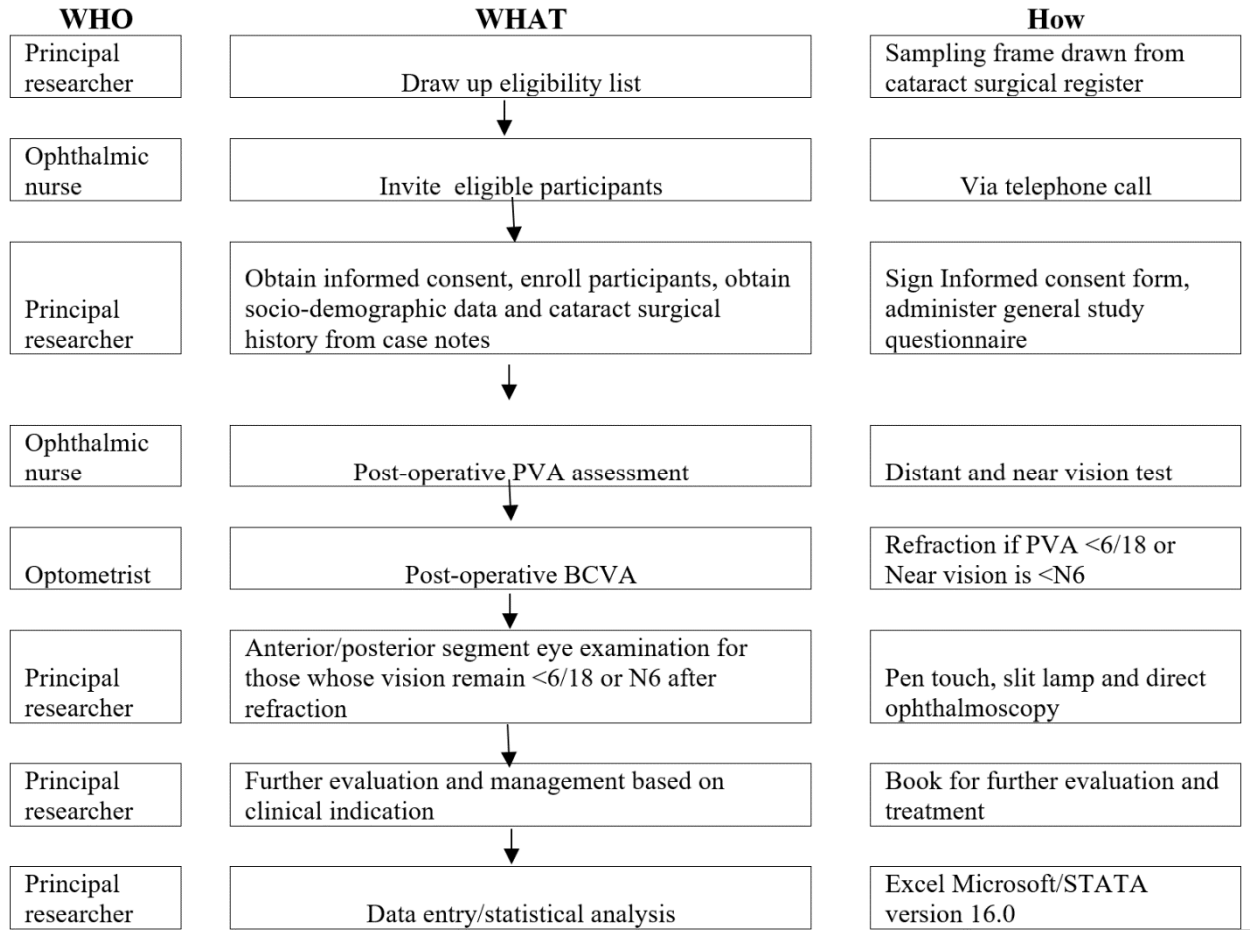
records and patients residing outside of Plateau state at the time of the study. All participants were given a stipend to reduce travel cost incurred.

### **2.1.1 Data collection**

The cataract surgical records of both hospitals in the 18-month study period were reviewed by the principal investigator; an ophthalmologist to determine eligibility. Eligible participants were invited for enrollment in the study and examination at their respective hospitals by an ophthalmic nurse via telephone calls. Non-responders were eligible participants who declined participation, failed to show up or could not be reached via their telephone contacts.

Upon enrollment, participants were interviewed by the ophthalmologist to obtain their socio-demographic data and relevant cataract surgical history. History of pre-operative biometry and intra ocular lens power implanted were retrieved from patient's surgery notes. Thereafter, all patients underwent distant visual acuity (VA) assessment by the ophthalmic nurse with available correction at a distance of 6 meters using an illuminated Snellen's 'E' chart to obtain the Presenting Visual Acuity (PVA). Near vision was tested with available correction with the patient holding the reduced 'E' chart at a distance of 40cm. Automated refraction followed by subjective refraction was performed by an optometrist for all patients with PVA worse than 6/18 to obtain the Best-Corrected Visual Acuity (BCVA). In all cases, measurements were first made separately for each eye, beginning with the right eye. In the same manner, the left eye was tested before testing the two eyes together. To reduce measurement bias, visual acuity charts and assessment method were standardized and the same personnel performed PVA and BCVA assessment in each facility through the entire period of data collection.

Cause(s) of visual impairment (VI) not amenable to refractive correction were identified following anterior and posterior segment examination by the ophthalmologist. A lack of improvement in PVA by at least one line on the Snellen Chart was considered as VI from a cause other than refractive error (RE). Participants found to have uncorrected distant and or near RE were given spectacle prescription. Those with VI from causes other than RE were given appropriate treatment or referred for further management. Figure 1 is a flow chart of study activities.



**Fig. 1.** Flow chart of study activities.

For the purpose of this study, the following operational definitions were used:

1. Post-operative PVA: Visual acuity in the operated eye using currently available refractive correction.<sup>13</sup>
2. Post-operative BCVA: Visual acuity in the operated eye with best possible correction.<sup>13</sup>
3. Clinical outcomes of cataract surgery include: post-operative PVA and BCVA.
4. Post-operative visual outcome was classified as good ( $\geq 6/18$ ), borderline ( $6/18 - 6/60$ ) and poor ( $< 6/60$ ) based on World Health Organization recommended guidelines on outcome of cataract surgery at six weeks post-operatively.<sup>14</sup>
5. Refractive error: PVA worse than 6/18 which improves by one or more lines on the Snellen's chart with refraction.

### **2.1.1.1 Statistical analysis**

Data was entered into Microsoft excel spreadsheet and imported into STATA version 16.0 (Stata Corp, College Station, TX, USA) for analysis. Descriptive statistics was used for socio-demographic data and patients' surgical history. Categorical variables are represented as numbers and percentages and Fisher's exact test used to test association between

categorical variables. A 2-sided *P* value =.05 was regarded as statistically significant for all variables of interest.

### 3. RESULTS AND DISCUSSION

A total of 125 participants from the two hospitals met the eligibility criteria. Of these, 87 were enrolled into the study giving a response rate of 69.6%. Non-response in 38 (30.4%) subjects was due to declined consent (two), death (three) and failure to turn up after initial verbal accent (seven) while the remaining 26 (21%) subjects were not reachable using their hospital registered telephone contacts.

The age of the study participants ranged between 40-104 years (mean=67.2 SD± 12.0). Forty-six (52.9%) were males, with a male to female ratio of 1.1:1. All participants had manual small incision cataract surgery with posterior chamber intra ocular lens (IOL) implantation by four surgeons. The IOL powers ranged from +18.0D to +24.5D with a median of +20.5D. Pre-surgery biometry had been performed on 47 (54.0%) of the participants. Of these, 21(44.7%) had the biometry-calculated IOL power implanted; which is 24.1% of the total study population. The remaining 26 (55.3%) participants with biometry; 29.9% of the entire study cohort had available IOL power implantation, because the recommended IOL powers were not available at time of surgery (Table 1).

**Table 1. Cataract surgical history of study participants**

<b>Surgical parameter</b>	<b>Frequency (%) n = 87</b>
<b>Operated eye</b>	
Right	40 (46.0%)
Left	47 (54.0%)
<b>Pre-surgery biometry performed</b>	
Yes	47 (54.0%)
No	40 (46.0%)
<b>IOL power implanted</b>	
Biometry-calculated IOL power	21 (24.1%)
Available IOL power 1	26 (29.9%)
Available IOL power 2	40 (46.0%)
<b>Post-operative refraction performed prior to survey</b>	
Yes	7 (8.1%)
No	80 (92.0%)

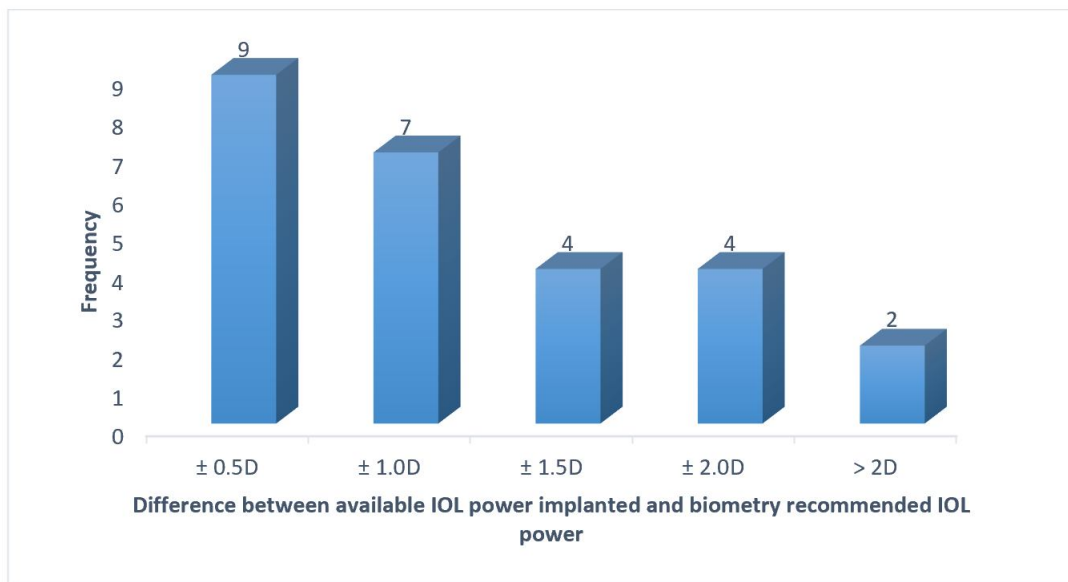
### Post-surgery spectacle wear at presentation

Yes	5 (5.8%)
No	82 (94.2%)

IOL: intra-ocular lens, available IOL power 1: IOL power choice was guided by biometry calculation,

Available IOL power 2: IOL power implanted without no pre-surgery biometry

The difference between the IOL power recommended following pre-surgery biometry for 26 patients and the available IOL power (available IOL power 1) implanted at surgery is shown on Figure 2. Taking emmetropia into consideration, nine out of the 26 available IOL powers implanted were within  $\pm 0.50\text{D}$ , while seven were within  $\pm 1.0\text{D}$  from the pre-surgery recommended IOL power (Figure 2).



**Fig. 2.** Difference between available intraocular lens power implanted in 26 patients and biometry recommended IOL power.

Only 7 (8.1%) of all study participants had been refracted, 5 (5.8%) of whom were wearing spectacle correction at presentation. (See table 1). Presenting visual acuity (PVA) was good in 32 (36.8%) participants and borderline in 41 (47.1%) of them. After refractive correction, the proportion of good outcomes increased to 78.1% with only 7 eye (8.1%) still having poor outcomes. A comparison of post-operative PVA and best-corrected visual acuity (BCVA) with the World Health Organization (WHO) recommended target at six weeks post-surgery is presented- Table 2. The post-operative PVA and BCVA in those who had biometry-calculated IOL power implantation was not significantly better than that of those who had pre-surgery biometry without implantation of the recommended IOL power (available 1) and those who did not have biometry prior to surgery (available 2).  $P = .645$  and  $.146$  for PVA and BCVA respectively. (See Table 2).

**Table 2. Outcomes of cataract surgery in presenting visual acuity and best corrected visual acuity among study participants**

Post-operative visual outcomes	Intraocular lens power implanted				WHO Threshold	Fisher's exact P Value
	BCIOL	AIOL 1	AIOL 2	Total		
	N (%)	N (%)	N (%)	N (%)		
<b>PVA</b>						
<b>Good</b>						
(≥ 6/18)	9(28.1)	10(31.3)	13(40.6)	32(36.8)	>80	
<b>Borderline</b>						
(6/18- 6/60)	9(22.0)	10(24.4)	22(53.7)	41(47.1)	<15	0.645
<b>Poor</b>						
(< 6/60)	3(21.4)	6(42.9)	5(35.7)	14(16.1)	<5	
<b>Total</b>	<b>21(24.1)</b>	<b>26(29.9)</b>	<b>40(46.0)</b>	<b>87 (100)</b>		
<b>BCVA</b>						
<b>Good</b>						
(≥ 6/18)	13 (19.1)	21 (30.9)	34 (50.0)	68(78.1)	>90	
<b>Borderline</b>						
(6/18- 6/60)	5(41.7)	2(16.7)	5 (41.7)	12(13.8)	<5	0.146
<b>Poor</b>						
(< 6/60)	3(42.9)	3(42.9)	1(14.3)	7 (8.1)	<5	
<b>Total</b>	<b>21(24.1)</b>	<b>26(29.9)</b>	<b>40 (46.0)</b>	<b>87(100)</b>		

WHO: World Health Organization, PVA: Presenting Visual Acuity, BCVA: Best-Corrected Visual Acuity, BCIOL: Biometry calculated IOL power, AIOL 1: IOL power choice guided by biometry calculation, AIOL 2: IOL power implanted without pre-surgery biometry

A total of 76 (87.4%) eyes had improvement in vision after refraction. Post-operative astigmatism ranged between -6.00D and +4.80D with an average of -1.70D was found in 64 (84.2%) of those refracted. But, 62 (81.6%) of the cylindrical corrections were equal to or greater than +1.00D. The average spherical and presbyopic correction of the cohort were

+0.55D and +2.64D respectively. A total of 53 (69.7%) eyes had both spherical and cylindrical corrections (See table 3).

**Table 3. Post-operative refraction of study participants**

<b>Optical</b>				
<b>Correction</b>		<b>Mean</b>	<b>Minimum</b>	<b>Maximum</b>
<b>in Diopters</b>	<b>Frequency (%)</b>	<b>(Standard deviation)</b>	<b>Value</b>	<b>Value</b>
<b>Sphere</b>	65 (85.5)	+0.55 (1.50)	-3.00	+5.00
<b>Cylinder</b>	64 (84.2)	-1.7 (2.29)	-6.00	+4.75
<b>Near Add</b>	76 (100)	+ 2.64(0 .43)	+1.50	+3.50

## **Discussion**

In this study of clinical outcomes of surgery for age-related cataract with intraocular lens (IOL) implantation, the post-operative presenting visual acuity (PVA) in those who had surgery with biometry-calculated IOL power did not differ significantly from that of those who had available IOL power inserted. However, there was a significant difference between the best-corrected visual acuity (78% good, 8% poor) and PVA (37% good, 16% poor) in the distribution of the post-operative visual acuity by World Health Organization (WHO) categorization. Many population and hospital based studies have consistently shown that successful cataract surgery with IOL implantation restores vision and reduces or eliminates blindness associated with cataract.<sup>15,16</sup>

According to the WHO's recommendation, over 90% of patients operated for cataract should have good outcomes and less than 5% should have poor outcomes with best correction.<sup>14</sup> Hence, the visual outcome of our study cohort did meet the standard set by the WHO. But is consistent with results of most cataract surgical outcomes from Nigeria and many other LMICs.<sup>5,17,18</sup> The recent proposal to use the effective cataract surgical coverage (eCSC) as indicator for monitoring the uptake and outcome of cataract surgery at the global level has raised the benchmark of good outcomes of cataract surgery even higher.<sup>13</sup> Through sustained, multi-sectorial collaboration, the WHO target for visual outcomes as well as the new eCSC threshold for good outcome set at 6/12 is achievable in developing nations as was demonstrated by Bogunjoko<sup>19</sup> et al. It was observed that majority of the patients with borderline and poor PVA in this study either did not have pre-surgery biometry or the biometry-recommended IOL power was not implanted. Contrary to existing knowledge, the visual outcomes of those who had surgery with biometry-calculated IOL implantation were not significantly better than that of those who had surgery with available IOL implantation ( $P = .65$  and  $.15$  for PVA and BCVA respectively).

Available or standard IOL powers are often utilized where biometry equipment is unavailable, non-functional or the recommended IOL powers are not available at time of surgery as was observed in 26 of our study participants. The authors of this current study did not come across any study that specifically compared visual outcomes of cataract surgery

with available IOL and biometry-calculated IOL power. But one prospective study from Malawi reported that after refraction, the proportion of good PVA increased from 79% to 89% and proportion of poor PVA decreased from 1.5% to 0.9% with use of standard 22D IOL power.<sup>10</sup> In another study, Briesen<sup>20</sup> et al reported that 71% of eyes operated for cataract in Kenya had good BCVA compared to the 57% that would have been obtained had standard IOL powers of 21D and 22D been used. In contrast, some authors from Nigeria have attributed the high proportion of poor outcomes recorded in their study cohort to the use of available IOL power rather than biometry-calculated.<sup>21</sup>

It is worth noting that, residual uncorrected refractive error (URE) was the single most frequent cause of sub-optimal PVA in our study population. Similar findings were documented by other authors in Nigeria and India.<sup>22,23</sup> In contrast, some authors have reported unsuspected pre-existing comorbidity and posterior capsular opacity as the most common cause of sub-optimal vision after cataract surgery among their cohorts.<sup>5,17,20,24</sup> This study found that more than 80% of those whose vision improved with refraction had astigmatism of  $\geq 1.00D$ . Probably due to placement of sutures in some patients or pre-existing corneal astigmatism as has been elucidated in some other studies.<sup>25-29</sup> Furthermore, Implantation of wrong IOL power has been identified as one of the pre-operative causes of residual post-operative refractive error.<sup>29,30</sup> Although both cataract surgical facilities in this study have functional biometry equipment's, it was observed that only about half of the study participants had biometry pre-surgery. First, one of the study facilities had recently installed biometry equipment's only five months prior to commencement of our study, meaning that biometry was not performed on participants who had undergone cataract surgery earlier. Secondly, pre-surgery biometry in the second facility was not routinely performed due to inadequate manpower. These do not only highlight the limited infrastructure and human resources available for eye care in many low- and middle-income countries (LMICs), but also the efforts being made to change the narrative. Although, our study was not specifically designed to assess post-operative follow-up and refraction rates, we discovered that follow-up visit post-surgery and refraction rates in our study facilities were poor. This is corroborated by reports of a study which revealed that loss to follow up is as high as 20-30% in many LMICs as a result of the long travel distance, poor road infrastructure, high cost of transportation and failure to communicate the benefits to patients.<sup>17,20,31,32</sup> And that patients' who return for routine post-operative visits were more likely to be younger or had PVA in the severe visual impairment category or worse at early post-operative assessment.<sup>5,31</sup> This study has helped to address the huge backlog of post-operative URE among our study population.

The large difference in proportion of eyes with good outcomes before and after refraction in our study, highlights the importance of refraction and spectacle correction in enhancing clinical outcomes of cataract surgery. Although use of available or standard IOL power in cataract surgery is common practice in some resource-limited settings, surgical outcomes of cataract surgery has consistently be shown to greatly improve with accurate biometry and correct IOL power implantation in more advanced climes.<sup>20,31,32</sup> The observed lack of superiority in the use of biometry-calculated IOL in the current study raises the question of accuracy and validity of the biometry results and may suggest that IOL power determination or selection in our study facilities is less than ideal. It may also be that our sample size was too small to detect any difference. Additionally, although all participants had manual small incision cataract surgery with posterior chamber IOL implantation, variation in IOL position in the eye or surgical technique, both of which were not accounted for in this study could have biased our results towards the null. A comparative longitudinal study with larger sample size, standardized biometry equipment's, biometry technique and surgical technique will be useful in confirming or refuting the findings of our study. Additionally, future research to determine the accuracy of biometry and factors responsible for poor post operative follow up in our

study facilities will be of great value to improving the quality of cataract services in our study facilities.

#### **4. CONCLUSION**

The use of biometry-calculated IOL power was not associated with superior visual outcomes in this study. However, regardless of the IOL power implanted, surgery for age-related cataract enhanced patients' vision. Majority of the study subjects had post-operative PVA in the borderline category with residual URE as the principal cause. Hence, more attention needs to be given to post-operative refraction of patients operated for age-related cataract.

#### **CONSENT (WHERE EVER APPLICABLE)**

The author declares that 'Participants were recruited after signing a written informed consent to participate in the study and for publication of data.'

#### **ETHICAL APPROVAL**

Ethical approval was obtained from the ethics and review committee of Bingham University Teaching Hospital and the Faith Alive Foundation Hospital, Jos and from the London school of hygiene and tropical medicine. Participation was fully voluntary and at all times, the tenets of the declaration of Helsinki for research involving human subjects were upheld.

#### **REFERENCES**

1. Lewallen S, Schmidt E, Jolley E, Lindfield R, Dean WH, Cook C et al. Factors affecting cataract surgical coverage and outcomes: A retrospective cross-sectional study of eye health systems in sub-Saharan Africa. *BMC Ophthalmol.* 2015;15(1):1-8.
2. Dandona L. Outcome of cataract surgery is poor in developing countries. *Br Med J.* 2001;323:455.
3. Rotchford AP, Rotchford KM, Mthethwa LP JG. Reasons for poor cataract surgery uptake – a qualitative study in rural South Africa. *Trop Med Int Health.* 2002;7(3):288-292.
4. Buchan JC, Dean WH, Foster A BM. What are the priorities for improving cataract surgical outcomes in Africa? Results of a Delphi exercise. *Int Ophthalmol.* 2018;38(4):1409-1414.
5. Ilechie AA, Boadi-Kusi BS, Ndudiri OV, Ofori EA. Evaluation of post-operative visual outcomes of cataract surgery in Ghana. *Int J Heal Res.* 2012;5(1):35-42.
6. Finger RP, Kupitz DG, Fenwick E, Balasubramaniam B, Ramani RV, Holz FG GC, Gilbert CE. The Impact of Successful Cataract Surgery on Quality of Life, Household Income and Social Status in South India. *PLoS One.* 2012;7(8):1-7.
7. Teles MPM, Passos MA, Teles CPM, Lima SO. Life quality assessment before and after cataract surgery with intraocular lens implantation. *Rev Bras Oftalmol.* 2020;79(4):242-247.
8. Sherwin JC, Lewallen S, Courtright P. Blindness and visual impairment due to uncorrected refractive error in sub-Saharan Africa: Review of recent population-based studies. *Br J Ophthalmol.* 2012;96(7):927-930. doi:10.1136/bjophthalmol-2011-300426
9. Hashemi H, Fotouhi A, Yekta A, Pakzad R, Ostadimoghaddam H, Khabazkhoob M.

- Global and regional estimates of prevalence of refractive errors: Systematic review and meta-analysis. *J Curr Ophthalmol*. 2018;30(1):3-22.  
doi:10.1016/j.joco.2017.08.009
10. Sherwin JC, Dean WH, Schaeffers I, Courtright P, Metcalfe N. Outcomes of manual small-incision cataract surgery using standard 22 dioptre intraocular lenses at Nkhoma Eye Hospital, Malawi. *Int Ophthalmol*. 2012;32(4):341-347.
  11. Odugbo OP, Babalola OE, Morgan R. Cataract Backlog and Output of Cataract Surgery in Plateau State, Nigeria. *J Med Trop*. 2010;12(1).
  12. Kyari F, Murthy GVS, Sivsubramaniam S, Gilbert CE, Abdull MM, Entekume G et al. Prevalence of blindness and visual impairment in Nigeria: The national blindness and visual impairment survey. *Investig Ophthalmol Vis Sci*. 2009;50(5):2033-2039.
  13. Keel S, Müller A, Block S, et al. Health Policy Keeping an eye on eye care : monitoring progress towards effective coverage. *Lancet Glob Heal*. 2021;(21):1-5. doi:10.1016/S2214-109X(21)00212-6
  14. Pararajasegaram P. Importance of monitoring cataract surgical outcomes. *Community Eye Heal J*. 2020;15(44):49-50.
  15. Burton MJ, Ramke J, Marques AP, Bourne RRA, Congdon N JI et. The Lancet Global Health Commission The Lancet Global Health Commission on Global Eye Health : vision beyond 2020. In: *Lancet Glob Health*. Vol 9. ; 2021.
  16. Limburg H. Monitoring cataract surgical outcomes: Methods and tools. *J Community Eye Heal*. 2002;15(44):51-53.
  17. Isawumi M A, Soetan Eo, Adeoye AO, Adeoti CO. Evaluation of cataract surgery outcome in Western Nigeria. *Ghana Med J*. 2009;43(4):169-174.
  18. Asferaw CM Tamrat LT, Markos CM. Outcomes and Associated Factors of Cataract Surgery Among Adults Attending a Tertiary Hospital in Addis Ababa, Ethiopia. *Relat Patient Outcome Meas*. 2020;11:231-239.
  19. Bogunjoko TJ, Hassan AO, Lewis K, Akanbi T, Ashaye A, Bogunjoko H. Tackling the Burden of Blindness in Ogun State , Nigeria : The Success of Private / Public Partnerships. *Ophthalmic Res An Int J*. 2019;10(2):1-8.
  20. Briesen S, Roberts H, Lewallen S. The importance of biometry to cataract outcomes in a surgical unit in Africa. *Ophthalmic Epidemiol*. 2010;17(4):196-202.
  21. Ukponmwan CU, EU Ogborogu EU OW. Visual outcome of cataract surgery. *Niger J Ophthalmol* 2010;. 2013;23(6):448-449.
  22. Olawoye OO, Ashaye AO, Bekibele CO, Ajayi BGK. Visual Outcome after Small Incision Cataract Surgery in Southwestern Nigeria. *Niger J Ophthalmol*. 2011;18(2):1997-2000.
  23. Murthy GVS, Vashist P, John N, Pokharel G, Ellwein LB and the SEWA-rural cataract study group. Prevalence and vision-related outcomes of cataract surgery in Gujarat, India. *Ophthalmic Epidemiol*. 2018;176(1):1570-1573.
  24. Ezegwui IR, Ajewole J. Monitoring cataract surgical outcome in a Nigerian mission hospital. *Int Ophthalmol*. 2009;29(9):7.
  25. Ferrer-Blasco T, Montés-Micó R, Peixoto-de-Matos SC, González-Méijome JM, Cerviño A. Prevalence of corneal astigmatism before cataract surgery. *J Cataract Refract Surg*. 2009;35(1):70-75. doi:10.1016/j.jcrs.2008.09.027
  26. Yuan X, Song H, Peng G, Hua X, Tang X. Prevalence of Corneal Astigmatism in Patients before Cataract Surgery in Northern China. *J Ophthalmol*. 2014;2014:536412. doi:10.1155/2014/536412
  27. Norrby S. Sources of error in intraocular lens power calculation. *J Cataract Refract Surg*. 2008;34(3):368-376. doi:10.1016/j.jcrs.2007.10.031
  28. Lekhanont K, Wuthisiri W, Chatchaipun P, Vongthongsri A. Prevalence of corneal astigmatism in cataract surgery candidates in Bangkok, Thailand. *J Cataract Refract Surg*. 2011;37(3):613-615. doi:10.1016/j.jcrs.2010.12.038
  29. Abdelghany AA, Alio JL. Surgical options for correction of refractive error following

- cataract surgery. *Eye Vis (London, England)*. 2014;1:2. doi:10.1186/s40662-014-0002-2
30. Cook C. How to improve the outcome of cataract surgery. *J Community Eye Heal*. 2000;13(35):37-38.
  31. Congdon N, Dadson S, Chan VF, Mathenge W. Assessment of cataract surgical outcomes in settings where follow-up is poor: PRECOG, a multicentre observational study. *Lancet Glob Heal*. 2013;1(1):37-45.
  32. Limburg H, Foster A, Gilbert C, G Johnson GJ, Kyndt M, Myatt M. Routine monitoring of visual outcome of cataract surgery. Part 2: Results from eight study centres. *Br J Ophthalmol*. 2005;89:50-52.

UNDER PEER REVIEW