

## Flood Vulnerability Assessment of Communities in Akwa Ibom, Nigeria

### Abstract

Floods are natural events; however, due to various human-related activities coupled with climate change, flooding tends to be both human-induced and natural events. Geographical Information Systems (GIS) techniques can spatially process different physical-environmental parameters in flood risk assessment and the present study determine the extent of vulnerability among the communities in Akwa Ibom State, Nigeria. From the analysis, spatial extent of 932.26 km<sup>2</sup> (13.48%) showed low flood vulnerability level while a spatial extent of 3411.37 km<sup>2</sup> (49.33%) and 2572.09 km<sup>2</sup> (37.19%) indicated moderate and high flood vulnerability level respectively. At the LGAs level, the low vulnerability covers 932.27 km<sup>2</sup> which represented 13.48% of the entire LGAs in Akwa Ibom State, the medium vulnerability covers a spatial extent of 3411.37 km<sup>2</sup> which represented 49.33% of the entire state while the high vulnerability covers a spatial extent of 2572.09 km<sup>2</sup> which represented 37.19% of the LGAs in the state. The outcome further revealed that Two (2) LGAs are found within the low vulnerability, nineteen (19) LGAs are found within the medium vulnerability while ten (10) LGAs are found within the high vulnerability. At the community level, the analysis indicated that among the 795 communities in the state, 138 of the communities which represent 17.36% of the entire communities have low vulnerability to flood hazard, 429 communities at 53.96% have medium vulnerability level while 228 communities which represent 28.68% of the entire communities in the state have high flood vulnerability level. The generated maps and identified LGAs and communities at different flood vulnerability zones are useful in all steps of disaster management (prevention, mitigation, preparedness, operations, relief and recovery) and should be considered during initial planning.

**Keywords:** Flood, GIS, Vulnerability Assessment, Flood Vulnerability, Akwa Ibom

### Introduction

Floods are natural events; however, due to various human-related activities coupled with climate change, flooding tends to be both human-induced and natural events. As a result, the impact in recent times cannot be over-emphasized, hindering development in many developing countries. According to Sarkar and Mondal (2020), the aftermath of a flood event can be perceived in socio-economic activities, while the extent of such aftermaths is historically increasing globally

Comment [TK1]: Comma should be used rather than semi-colon.

Comment [TK2]: Anthropogenic

Comment [TK3]: levels

Comment [TK4]: What does it mean? Use full abbreviation please.

Comment [TK5]: hazards

Comment [TK6]: Should be rephrased to avoid repetition. The same sentence was used in the abstract section.

Comment [TK7]: Impacts

Comment [TK8]: perceived

(Moreno et al., 2020). Flood events can affect various entities both in urban and rural areas, while the extent of the impacts tends to be very high in urban areas (Tamiru & Dinka, 2021). According to global natural disaster reports, over 2.4 billion individuals have, one way or other, suffered the consequences of flood events. About 165,020 mortalities have been link to the event between 2019 and 2020, as approximated by the United Nations (Tamiru & Dinka, 2021). Furthermore, floods have caused approximately \$280 billion in economic damage in Africa over the past two decades (Tamiru & Dinka, 2021; Afolabi et al., 2022).

An important step to identify the level of flood vulnerability is to map the flood-prone areas to a level. This mapping is very important in the determination of various development policies, such as the development of conservation land, the opening and placement of settlement land, the making of embankments, and other policies. Mapping is been carried out with attention to spatial and temporal precision (Purnawali et al., 2017). Spatial data are required to know the distribution of flood area, while the temporal data are required to know the flood period. Geographical Information Systems (GIS) and Remote Sensing as a science and technology are able to provide a form of management and data of spatial analysis in large numbers. GIS is use to determine the model with selected data so that the views and knowledge of users about the developing situation within, and with GIS mapping of flood prone areas can be done (Purnawali et al., 2017).

GIS and remote sensing techniques have become indispensable tools for mapping flood-risk vulnerability (Wicht & Osinska-Skotak, 2016; Das et al., 2017; Gandini et al., 2018), providing evidence for early warning and emergency response systems. GIS tools in a multi-criteria approach (MCA) combines causative natural factors to derive flood vulnerability classes that support flood risk mitigation (Njoku et al., 2020). In this vein, Meena & Gupta (2017) integrated multiple parameters such as rainfall, slope, drainage density, land use, building density and so on

Comment [TK9]: Has been

to make deductions. Similarly, Danumah, *et al.* (2016) integrated parameters such as slope, drainage density, type of soil, isohyet, population density, land use and sewer system density. Njoku et al. (2018) also combined independent parameters (distance from river, rainfall intensity, elevation, land use, slope and soil- “DRELSS”) to evaluate flood-risk vulnerability. GIS techniques can spatially process different physical-environmental parameters in flood risk assessment and the present study determine the extent of vulnerability among the communities in Akwa Ibom State, Nigeria.

**Comment [TK10]:** Use similar fonts. In some places *et al.*, is italic and in some places they are not. It should be uniform throughout the manuscript.

## **Method and Materials**

### *Study Area*

The study area was Akwa Ibom State of Nigeria. Akwa Ibom State is one of the thirty-six states in Nigeria and is located at latitude 4° 33' N and 5° 33' N and longitude 7° 25' E and 8° 25' E (Figure 1 and 2). It occupies a total land area of 7,246 square kilometres, with a population of 3,920,208 million people (NPC, 2006). Akwa Ibom State is generally a low-lying plain and riverine area with no portion exceeding 175m above sea level. The state is bounded to Atlantic Ocean at the southern end entering into some of its LGAs and communities. The climate features within a tropical monsoon climate of transitional zone of Koppen Af climatic types that varies from the hot equatorial forest type in the southern lowlands to the humid tropics in the northern highlands and the cool montane type in the Obudu plateau area with prolonged and heavy rainy season and very short dry season months in the region.

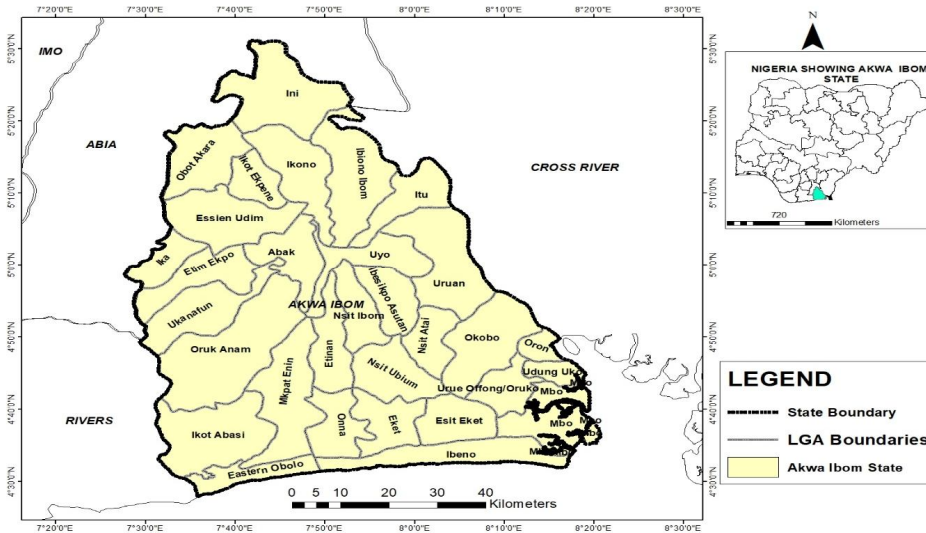


Figure 1: Overview of Akwa Ibom State showing various LGAs

Comment [TK11]: Mention the name of the software used to produce the map. For e.g. ArcGIS

Comment [TK12]: Processing

#### Data Gathering and Processes

The imagery of Akwa Ibom state and topographical map will be geo-referenced to world coordinate system (WGS 84) in ArcGIS 10.7. From the imagery, landuse map of the study area was acquired while drainage network, road network and communities imitative from topographical map. Soil texture map of states will also geo-referenced to WGS 84.

- i. *Vulnerability Criteria:* This study will make use of ranking methods of the vulnerability factors which is embedded in Analytical Hierarchy Process (AHP) proposed by Saaty (1980). AHP is a multi-criteria basic leadership method, which gives a methodical way to deal with evaluating and incorporating the effects of different variables, including a few dimensions of reliant or autonomous, subjective just as quantitative data (Berezi, 2019). Ranking method was adopted because the criterion weights are usually determined in the consultation process with choice or decision makers which resulted in ratio value

assigned to every criterion map (Lawal *et al.*, 2011). In positioning strategy, each measure under thought is positioned in the request of the leader's inclination. To create rule esteems for every assessment unit, each factor will be weighted by the evaluated essentialness for causing flood.

**Comment [TK13]:** Use similar fonts. In some places *et al.*, is italic and in some places they are not. It should be uniform throughout the manuscript.

- ii. *Landuse Map of Selected States:* The geo-referenced Landsat imagery will be exported to Idrisi Selva for the generation of landuse map of the states. Supervised classification technique was adopted with the use of MAXLIKE (Maximum Likelihood Algorithm) module to generate the landuse/land cover types in the area. The area in square kilometer of each landuse type was calculated. The landuse type was converted to vector using Feature to Polygon in ArcGIS environment. The landuse identified were thick vegetation, sparse vegetation, developing area, built up area and water body.
- iii. *Proximity to river channels (Drainage):* The drainage network which determines the proximity to river channels and communities were mapped from the topographical map. These geographic features were digitized and captured as vector data in ArcGIS 10.7.
- iv. *Elevation Map:* The elevation map was derived from the height above the mean sea level directly from the Google earth image. A 10 x 10 grid system covering Niger Delta LGAs was created in ArcGIS 10.7 and imported into Google earth interface. The latitude, longitude and height in meters at the center of each grid was recorded and input in Microsoft Excel 2007 Version. The latitude, longitude and height of each point were then imported to ArcGIS 10.7 and were used to generate the elevation map through interpolation method.

**Comment [TK14]:** River

**Comment [TK15]:** Channels

The landuse, proximity to river channels (drainage) and elevation maps were reclassified into high vulnerability, moderate vulnerability, low vulnerability and no vulnerability.

i. *Reclassification based on Landuse types*: Four (4) types of terrain were observed in relation to their distance to the rivers. In terms of landuse map, the thick vegetation was reclassified to low vulnerability, farmland/sparse vegetation to moderate vulnerability while built up area and water bodies as high vulnerability.

Comment [TK16]: Types

ii. *Reclassification based on drainage network*: In terms of drainage network, the communities were rated based on their proximity to rivers in the study area. Buffering method was used whereby zones of influence were generated as rings of 500 meters, 1000 meters and 1500 meters from the rivers. The ring of 500m was regarded as high vulnerability, 1000m as moderate vulnerability and 1500m as low vulnerability (Mmom and Ayakpo, 2014).

Comment [TK17]: Drainage Network

iii. *Reclassification based on elevation*: The elevation map was also reclassified as follows 1.6m-4.6m to high vulnerability, 4.7m-7.6m to moderate vulnerability and above 7.7m to low vulnerability.

Comment [TK18]: Elevation

The vulnerabilities levels were assigned values 3, 2, 1 to high vulnerability, moderate vulnerability and low vulnerability respectively by applying the ranking method to the factors. Using these values, the landuse vulnerability map, drainage network vulnerability map, soil texture vulnerability and elevation vulnerability map were overlaid in ArcGIS with the use of UNION MODULE. Reclassification method was also applied to have very high vulnerability, high vulnerability, moderate vulnerability, low vulnerability and very low vulnerability. The output of this map will be regarded as the flood vulnerability map of the selected states in the Niger Delta region considering the landuse, proximity to river channels (drainage network), elevation and soil texture maps of the area. Spatial query in ArcGIS 10.7 will be used to

Comment [TK19]: Delete extra space

determine the vulnerability levels that each community fell into and also used to determine the spatial extent of each vulnerability level.

Comment [TK20]: Fall into and also to determine the spatial .....

The results of the classifications and reclassifications was carried out in each of the landuse/land cover, drainage network buffer, soil texture and elevations which will also be explained using descriptive statistics such as percentage and rating.

Comment [TK21]: were

## Result and Discussion

Comment [TK22]: Results and Discussions

### *Slope Percent Rise (%)*

The analysis of vulnerability level based slope percent rise domain was presented in Tables 1 and 2 and Figure 2 and 3 Considering the Table and Figure, the analysis indicated six (6) categories of slope percent rise in Akwa Ibom state; 0-0.1527%, 1.528-3.173%, 3.174-5.288%, 5.289-8.344%, 8.345-12.575% and 12.756-29.970%. The vulnerability rating of the indicated 3-high vulnerability, 2-moderate vulnerability and 1-low vulnerability. Among the slope percent analysis of Akwa Ibom State, the total spatial extent was 6685.38 km<sup>2</sup>. The highest slope percent rise was at 0-1.527% with spatial extent of 2736.65 km<sup>2</sup> (40.93%) and interpreted as high vulnerability while the lowest slope percent rise was at 12.756-29.970% with spatial extent of 58.71 km<sup>2</sup> (0.88%) and interpreted as low vulnerability. From Table 2 and Figure 3 three slope percent rise vulnerability levels were identified, the low vulnerability level has spatial extent of 240.1 km<sup>2</sup> (3.59%), medium vulnerability has spatial extent of 1324.27 km<sup>2</sup> (19.81%) and high vulnerability has spatial extent of 5121.01 km<sup>2</sup> (76.60%).

Comment [TK23]: Table 1, not Tables 1

Comment [TK24]: Delete extra space

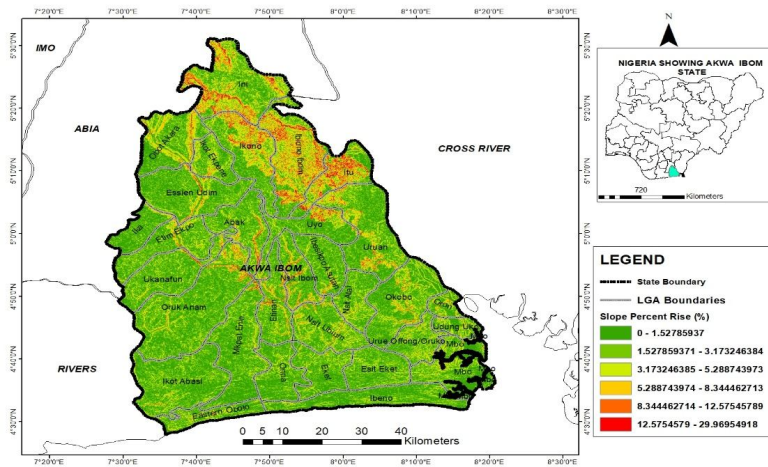


Figure 2: Slope Percent Rise of Akwa Ibom

Comment [TK25]: Medium vulnerability has 1324.27 km2 and high vulnerability has 5121.01 km2.

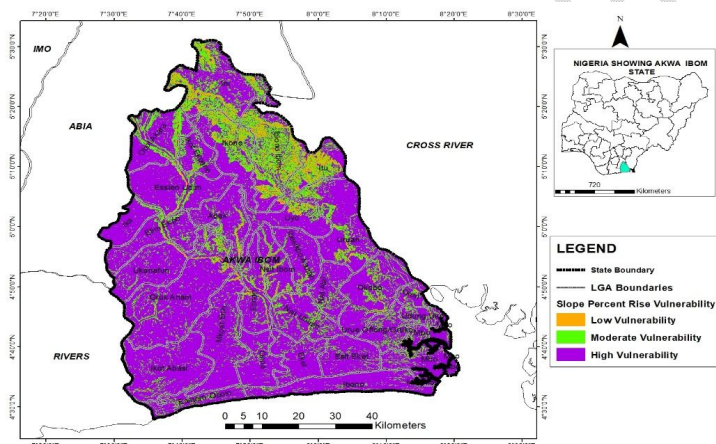


Figure 3: Slope Percent Rise Vulnerability of Akwa Ibom

Comment [TK26]: Name of the software is above

Comment [TK27]: As above

Table 1: Slope Percent Rise (%)

Slope Percent Rise (%)	Spatial Extent (Sq km)	Percentage (%)	Vulnerability Ratings	Vulnerability Interpretations
0-1.527	2736.65	40.93	3	High
1.528-3.173	2384.35	35.67	3	High
3.174-5.288	905.67	13.55	2	Moderate
5.289-8.344	418.62	6.26	2	Moderate
8.345-12.575	181.38	2.71	1	Low
12.756-29.970	58.71	0.88	1	Low
Total	6685.38	100.00		

Table 2: Slope Percent Rise Vulnerability

Slope Percent Rise Vulnerability Levels	Spatial Extent (Sq km)	Percentage (%)
Low	240.1	3.59
Moderate	1324.27	19.81
High	5121.01	76.60
Total	6685.38	100.00

#### *Proximity to Active River Channels*

Figure 4 to 6 presented map of Akwa Ibom State active river channels as part of the analysis for the proximity of active rivers in the state to various LGAs and communities while Tables 3 and 4 showed the details in spatial extent and vulnerability levels. From the analysis, three river buffer distance were identified at 500m, 1000m and 1500m respectively. At the 500m, the spatial extent was 1032 km<sup>2</sup> which represented 35.33% of the total spatial extent of 2921 km<sup>2</sup>. At 1000m, the spatial extent was 981 km<sup>2</sup> which represented 33.58% of the total spatial extent while at 1500m, the spatial extent was 908 km<sup>2</sup> which represented 31.09% of the total spatial extent. For vulnerability rating and interpretation, the river buffer distance of 500m was rated 3 and

interpreted as high vulnerability, 1000m was rated 2 and interpreted as medium vulnerability while the river buffer distance of 1500m was rated 1 and interpreted as low vulnerability.

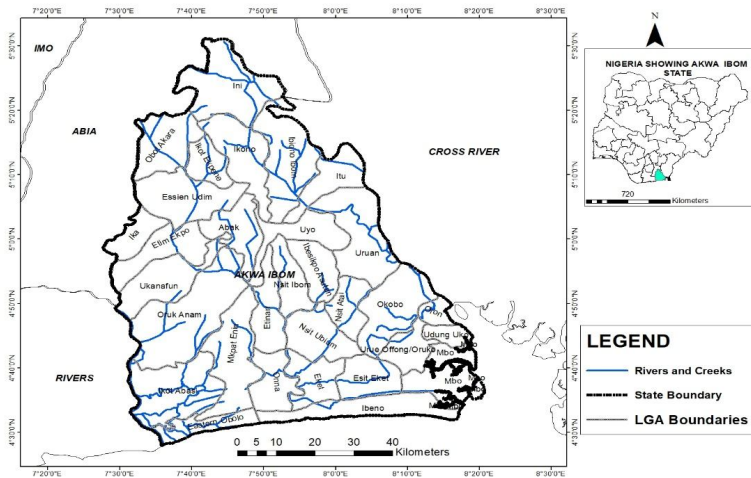


Figure 4: Active River Channels of Akwa Ibom

Comment [TK28]: As above

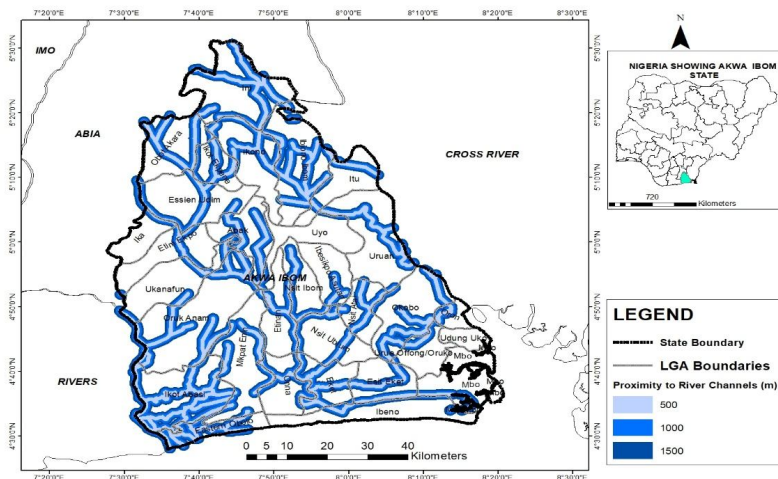


Figure 5: Proximity to Active River Channels

Comment [TK29]: As above

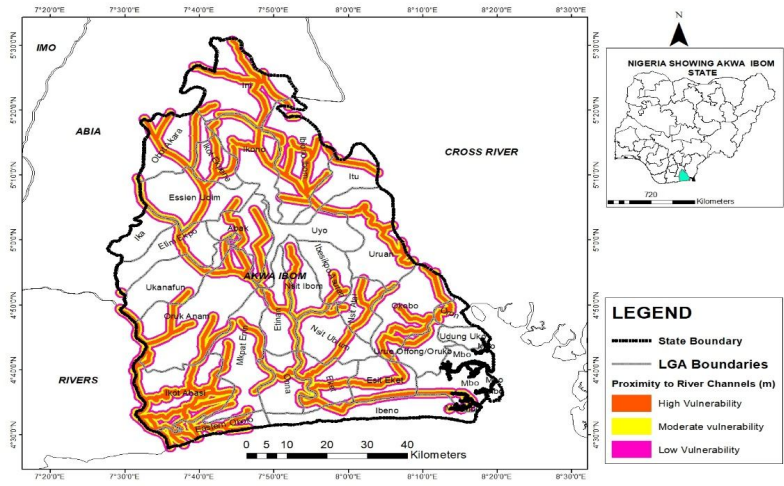


Figure 6: Proximity to Active River Channels Vulnerability of Akwa Ibom

Comment [TK30]: As above

Table 3: River Buffer Distance (m) from Active River Channels

River Buffer Distance (m)	Spatial Extent (Sq km)	Percentage (%)	Vulnerability Ratings	Vulnerability Interpretations
500	1032.00	35.33	3	High
1000	981.00	33.58	2	Moderate
1500	908.00	31.09	1	Low
Total	2921.00	100.00		

Table 4: Proximity to Active River Channel Vulnerability

Proximity to Active River Channel Vulnerability	Spatial Extent (Sq km)	Percentage (%)
Low	908.00	31.09
Moderate	981.00	33.58
High	1032.00	35.33
Total	2921.00	100.00

Comment [TK31]: km2

Landuse/Land Covers

Table 5 and Figure 7 presented the landuse and landcover analysis of Akwa Ibom State. From the analysis, the total landuse and landcover various categories showed a total spatial extent of 6600.66 km<sup>2</sup> and among these, 1170.32 km<sup>2</sup> (17.73%) represented Cropland/Agricultural activities and categorized as moderate vulnerability, 3606.16 km<sup>2</sup> (54.63%) represented the Degraded forest/Developing area and categorized as high vulnerability, 440.90 km<sup>2</sup> (6.68%) represented Thick vegetation/Plantation and Woodland and categorized as low vulnerability, 680.47 km<sup>2</sup> (10.31%) represented Wetland/Gallery and Riparian vegetation area and categorized as high vulnerability, 236.69 km<sup>2</sup> (3.59%) represented the Mangrove and categorized as moderate vulnerability while 373.85 km<sup>2</sup> (5.66%) and 92.27 km<sup>2</sup> (1.40%) represented the Settlements and Waterbodies respectively and they are all categorized as high vulnerability. From Table 6 and Figure 8, the overall landuse and land cover vulnerability showed that low vulnerability covered a spatial extent of 440.9 km<sup>2</sup> which is about 6.68% of the total spatial extent while 4776.49 km<sup>2</sup> (72.36%) and 1383.27 km<sup>2</sup> (20.96%) represented the medium and high vulnerability respectively.

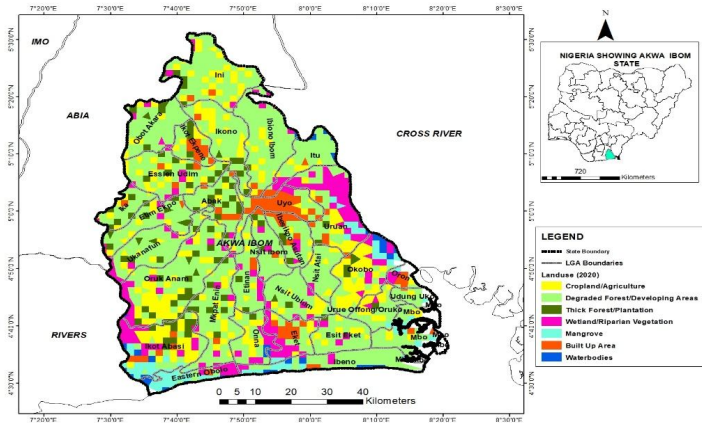


Figure 7: Landuse and Land cover Analysis of Akwa Ibom State

Comment [TK32]: As above

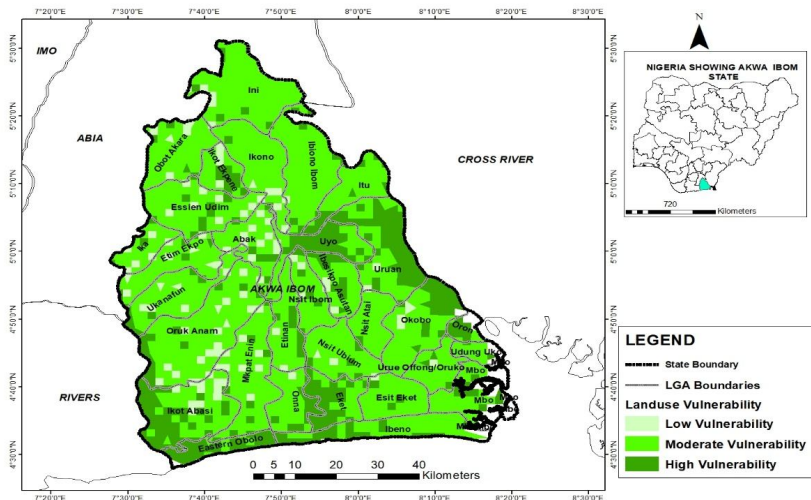


Figure 8: Landuse and Land cover Vulnerability of Akwa Ibom State

Comment [TK33]: As above

Table 5: Landuse/Land cover Analysis

Landuse/Land cover	Spatial Extent (km <sup>2</sup> )	Percentage (%)	Vulnerability Ratings	Vulnerability Interpretations
Cropland/Agriculture	1170.32	17.73	2	Moderate
Degraded Forest/Developing Area	3606.16	54.63	3	High
Thick Vegetation/Plantation/Woodland	440.90	6.68	1	Low
Wetland/Riparian Vegetation	680.47	10.31	3	High
Mangrove	236.69	3.59	2	Moderate
Settlements	373.85	5.66	3	High
Waterbodies	92.27	1.40	3	High
Total	6600.66	100.00		

Table 6: Landuse/Land cover Vulnerability

Landuse/Land cover Vulnerability	Spatial Extent (Sq km)	Percentage (%)
Low	440.9	6.68
Moderate	4776.49	72.36
High	1383.27	20.96
Total	6600.66	100.00

Comment [TK34]: km2

### Soil Texture

The soil texture analysis of Akwa Ibom State and soil texture vulnerability was presented in Table 7 to 8 and Figure 8 and 9. From the analysis, three categories of soil texture were identified and spatially distributed across 6470.35 km<sup>2</sup> spatial extent. Among the categories, spatial extent of 4941.75 km<sup>2</sup> (76.38%) represented Coarse soil texture and it is interpreted as low vulnerability, spatial extent of 1004.43 km<sup>2</sup> (15.52%) represented medium soil texture and it

is interpreted as medium vulnerability while the spatial extent of 524.17 km<sup>2</sup> (8.10%) represented Fine soil texture and it is interpreted as high vulnerability.

Comment [TK35]: f

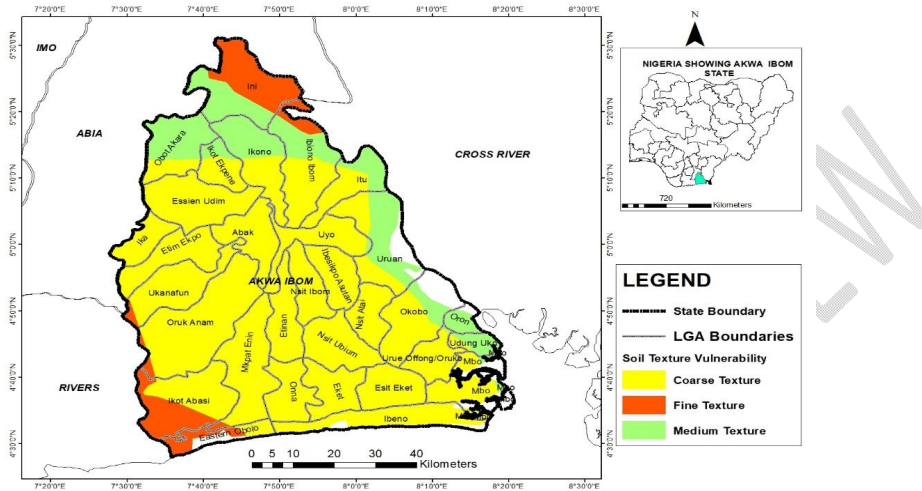


Figure 8: Soil Texture Analysis of Akwa Ibom State

Comment [TK36]: As above

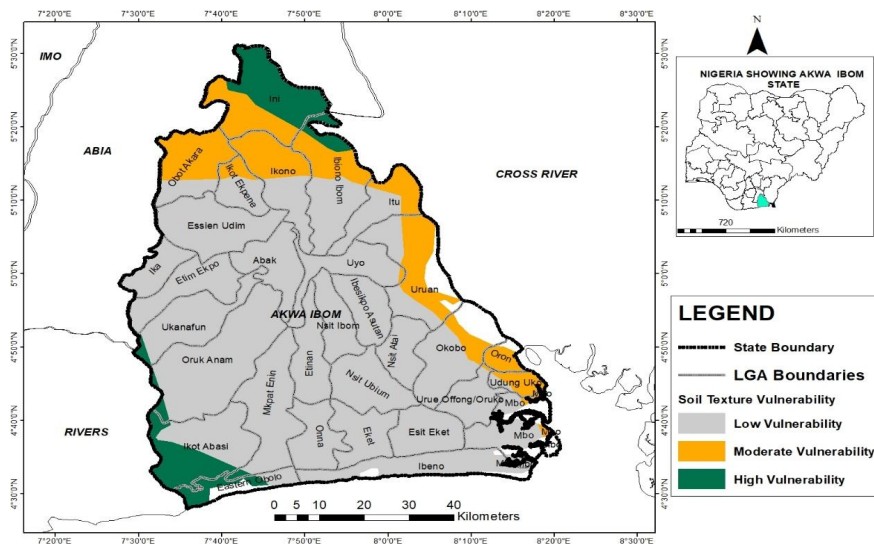


Figure 9: Soil Texture Vulnerability Analysis of Akwa Ibom State

Comment [TK37]: As above

Table 7: Soil Texture Analysis

Soil Texture	Spatial Extent (Sq km)	Percentage (%)	Vulnerability Ratings	Vulnerability Interpretations
Coarse Texture	4941.75	76.38	1	Low
Medium Texture	1004.43	15.52	2	Moderate
Fine Texture	524.17	8.10	3	High
Total	6470.35	100.00		

Comment [TK38]: km2

Table 8: Soil Texture Vulnerability

Soil Texture Vulnerability	Spatial Extent (Sq km)	Percentage (%)
Low	4941.75	76.38
Moderate	1004.43	15.52
High	524.17	8.10
Total	6470.35	100.00

Comment [TK39]: km2

### *Elevation*

The analysis of vulnerability level based on elevation (m) domain was presented in Tables 9 and 10, and Figure 10 and 11. The analysis indicated six (6) categories of elevation level in Akwa Ibom State; 0-21m, 21.01 - 39m, 39.01 - 57m, 57.01 - 76m, 76.01 - 99m, and 99.01 - 144m. At elevation 0-39m, the spatial extent covered was 3576.11 km<sup>2</sup> (53.1%) with vulnerability rating of 3 which implies high vulnerability. At the 39.01-76m, the spatial extent covered was 2280.67 km<sup>2</sup> (33.87%) with vulnerability rating of 2 which implies medium vulnerability. At elevation ranged from 76.01m – 144m, the spatial extent covered was 877.39 km<sup>2</sup> (13.03%) with vulnerability rating of 1 which implies low vulnerability.

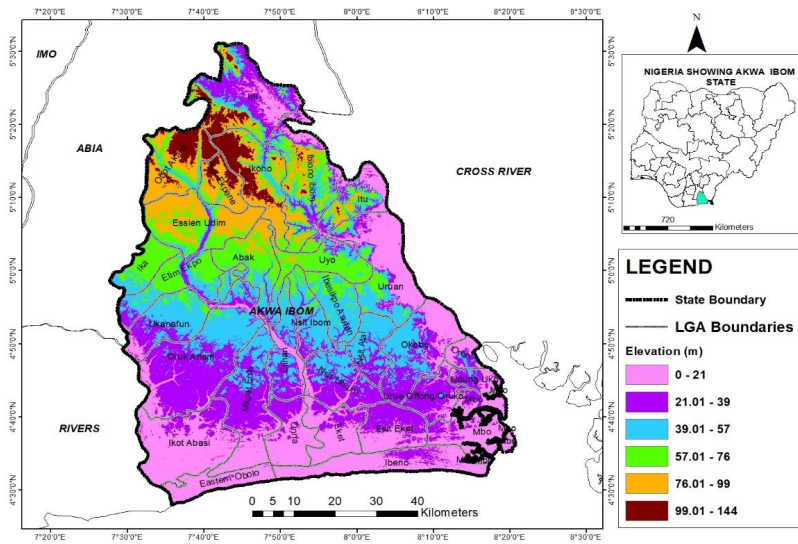


Figure 10: Elevation Analysis of Akwa Ibom State

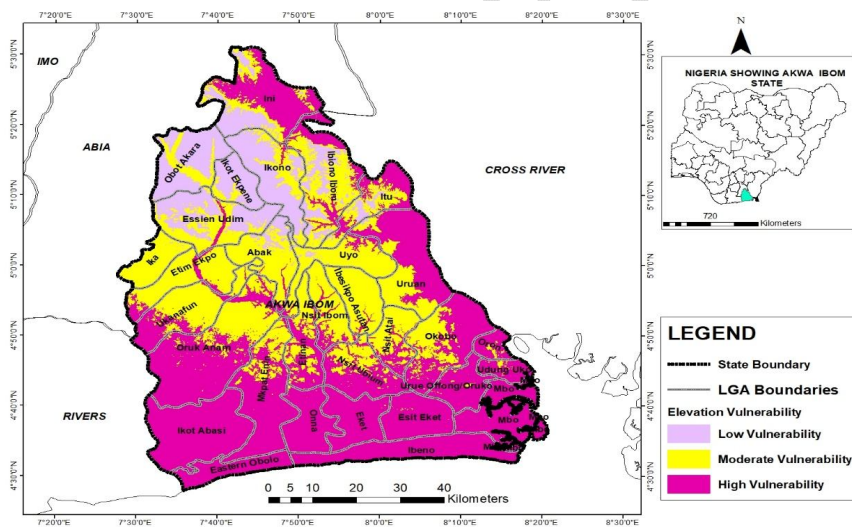


Figure 11: Elevation Vulnerability Analysis of Akwa Ibom State

Table 9: Elevation Analysis

Elevation (m)	Spatial Extent (Sq km)	Percentage (%)	Vulnerability Ratings	Vulnerability Interpretations
0-21	1918.74	28.49	3	High
21.01-39	1657.37	24.61	3	High
39.01-57	1355.95	20.14	2	Moderate
57.01-76	924.72	13.73	2	Moderate
76.01-99	627.75	9.32	1	Low
99.01-144	249.64	3.71	1	Low
Total	6734.17	100.00		

Table 10: Elevation Vulnerability

Elevation Vulnerability	Spatial Extent (Sq km)	Percentage (%)
Low	877.39	13.03
Moderate	2280.67	33.87
High	3576.11	53.10
Total	6734.17	100.00

### *Rainfall Volume*

The rainfall volume was analyzed as the domain for climate change influence on the flood vulnerability level of Akwa Ibom State and the outcome of the analysis was presented in Tables 11 and 12 and Figures 12 and 13. From the analysis, rainfall volume of 1957.077mm – 2104.420mm covers a spatial extent of 3279.24 km<sup>2</sup> which represented 48.68% of the total spatial extent of 6735.76 km<sup>2</sup>. In terms of vulnerability rating, the rainfall volume was rated 1 and it is interpreted as low vulnerability. For rainfall volume of 2104.421mm – 2239.186mm, the spatial extent covered was 2425.32 km<sup>2</sup> which represented 36.01% of the total spatial extent while the vulnerability rating was 2 and it is interpreted as medium vulnerability. For rainfall

volume of 2239.187 mm -2415.280 mm, the spatial extent covered was 1031.2 km<sup>2</sup> which represented 15.31% of the total spatial extent while the vulnerability rating was 3 and it is interpreted as high vulnerability.

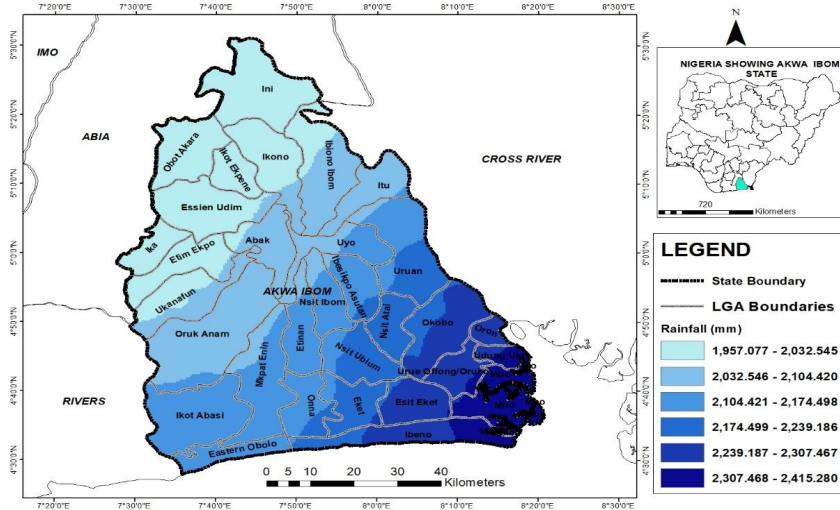


Figure 12: Rainfall Volume (mm) of Akwa Ibom State

Comment [TK40]: As above

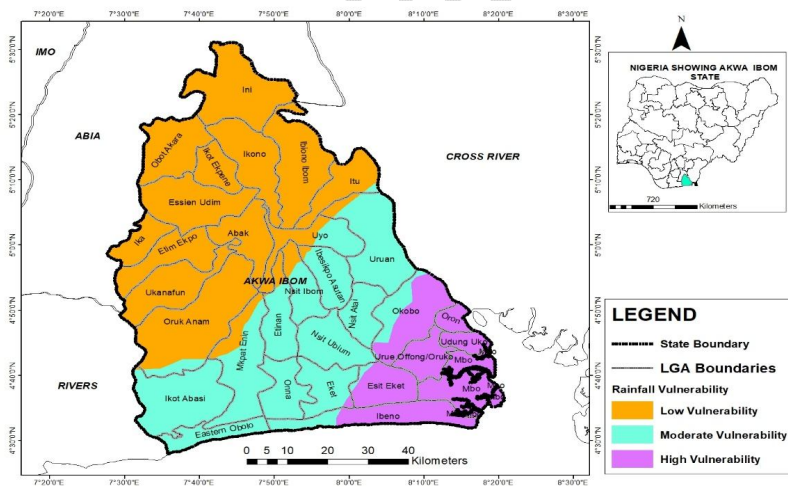


Figure 13: Rainfall Vulnerability of Akwa Ibom State

Comment [TK41]: As above

Table 11: Rainfall Volume Analysis

Rainfall Volume (mm)	Spatial Extent (km <sup>2</sup> )	Percentage (%)	Vulnerability Ratings	Vulnerability Interpretations
1957.077-2032.545	1761.4	26.15	1	Low
2032.546-2104.420	1517.84	22.53	1	Low
2104.421-2174.498	1621.34	24.07	2	Moderate
2174.499-2239.186	803.98	11.94	2	Moderate
2239.187-2307.467	672.45	9.98	3	High
2307.468-2415.280	358.75	5.33	3	High
Total	6735.76	100.00		

Table 12: Rainfall Vulnerability

Rainfall Vulnerability	Spatial Extent (Sq km)	Percentage (%)
Low	3279.24	48.68
Moderate	2425.31	36.01
High	1031.21	15.31
Total	6735.76	100.00

Comment [TK42]: km2

#### Communities Flood Vulnerability Levels

The flood vulnerability at the LGAs level and community level for Akwa Ibom State was analysed and presented in Tables 13 to 15 and Figures 14-17. From the analysis, spatial extent of 932.26 km<sup>2</sup> (13.48%) showed low flood vulnerability level while a spatial extent of 3411.37 km<sup>2</sup> (49.33%) and 2572.09 km<sup>2</sup> (37.19%) indicated moderate and high flood vulnerability level respectively. At the LGAs level, the low vulnerability covers 932.27 km<sup>2</sup> which represented

Comment [TK43]: levels

13.48% of the entire LGAs in Akwa Ibom State, the medium vulnerability covers a spatial extent of 3411.37 km<sup>2</sup> which represented 49.33% of the entire state while the high vulnerability covers a spatial extent of 2572.09 km<sup>2</sup> which represented 37.19% of the LGAs in the state. The outcome further revealed that Two (2) LGAs are found within the low vulnerability, Nineteen (19) LGAs are found within the medium vulnerability while Ten (10) LGAs are found within the high vulnerability. At the community level, the analysis indicated that among the 795 communities in the state, 138 of the communities which represent 17.36% of the entire communities have low vulnerability to flood hazard, 429 communities at 53.96% have medium vulnerability level while 228 communities which represent 28.68% of the entire communities in the state have high flood vulnerability level.

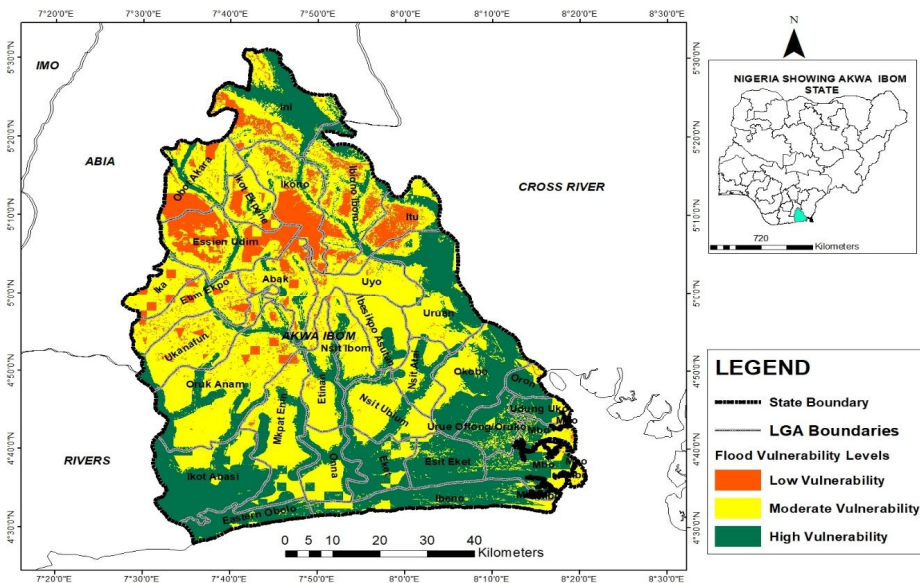


Figure 14: Flood Vulnerability Levels of Akwa Ibom State

Comment [TK44]: As above

Table 13: Final Flood Vulnerability Levels

Flood Vulnerability Levels	Spatial Extent (Sq km)	Percentage (%)
Low	932.26	13.48
Moderate	3411.37	49.33
High	2572.09	37.19
Total	6915.73	100.00

Comment [TK45]: km2

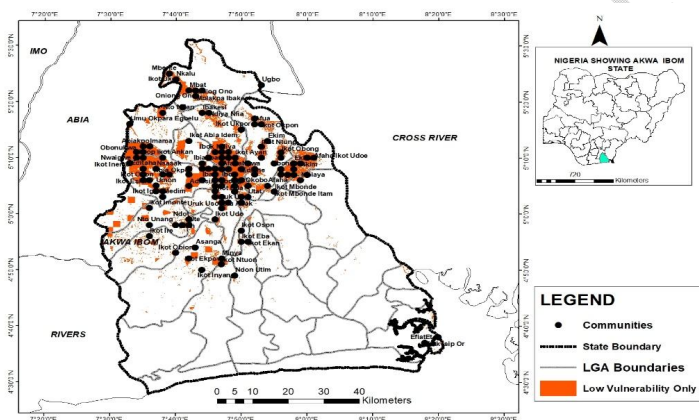


Figure 15: Flood Vulnerability at Community Level (Low Vulnerability Communities)

Comment [TK46]: As above

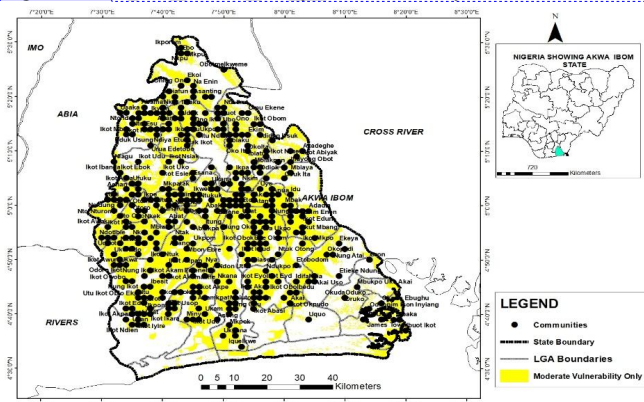


Figure 16: Flood Vulnerability at Community Level (Medium Vulnerability Communities)

Comment [TK47]: As above

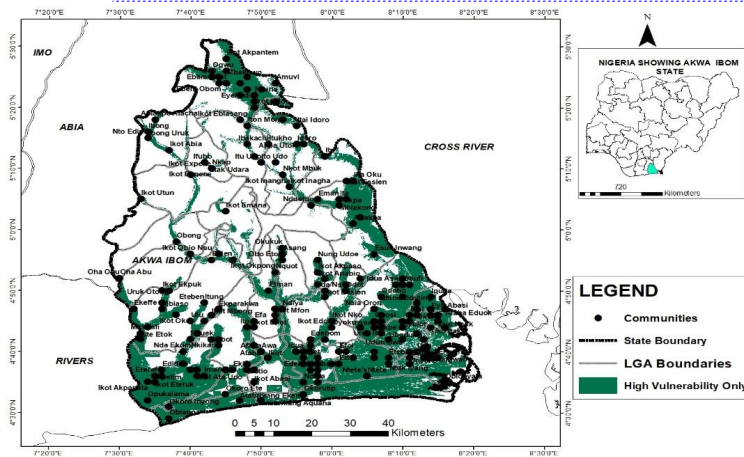


Figure 17: Flood Vulnerability at Community Level (High Vulnerability Communities)

Comment [TK48]: As above

Table 14: Summary of Flood Vulnerability Levels at LGAs and Communities

Communities Flood Vulnerability Levels	Number of LGAs	Number of Communities	Percentage (%)
Low	2	138	17.36
Moderate	19	429	53.96
High	10	228	28.68
Total		795	100.00

Table 15 Spatial Flood Vulnerability of LGAs in Akwa Ibom State

LGAs	Low Vulnerability		Moderate Vulnerability		High Vulnerability		Total LGA SE (km <sup>2</sup> )	Percentage (%)
	SE (km <sup>2</sup> )	%C-LGA	SE (km <sup>2</sup> )	%C-LGA	SE (km <sup>2</sup> )	%C-LGA		
Abak	48.13	5.16	126.71	3.71	24.92	0.97	199.76	100.00
Eastern Obolo	1.17	0.12	10.13	0.30	109.45	4.26	120.75	100.00
Eket	0.00	0.00	38.91	1.14	128.65	5.00	167.56	100.00
Esit Eket	0.00	0.00	15.46	0.45	152.6	5.93	168.06	100.00
Essien Udim	184.09	19.75	125.95	3.69	22.25	0.87	332.29	100.00
Etim Ekpo	45.51	4.88	153.57	4.50	16.05	0.62	215.13	100.00
Etinan	3.78	0.41	121.11	3.55	50.81	1.98	175.70	100.00
Ibena	6.03	0.65	49.3	1.45	189.19	7.36	244.52	100.00
Ibesikpo Asutan	1.67	0.18	127.17	3.73	26.06	1.01	154.90	100.00
Ibiono-Ibom	96.77	10.38	179.81	5.27	80.03	3.11	356.61	100.00
Ika	28.42	3.05	87.27	2.56	2.83	0.11	118.52	100.00
Ikono	141.64	15.19	120.31	3.53	25.7	1.00	287.65	100.00
Ikot Abasi	0.06	0.01	75.44	2.21	284.15	11.05	359.65	100.00
Ikot Ekpene	33.44	3.59	81.36	2.38	7.85	0.31	122.65	100.00
Ini	63.68	6.83	150.23	4.40	171.45	6.67	385.36	100.00
Itu	62.91	6.75	76.84	2.25	38.7	1.50	178.45	100.00
Mbo	19.25	2.06	90.43	2.65	122.79	4.77	232.47	100.00
Mkpat-Enin	8.41	0.90	195.43	5.73	127.5	4.96	331.34	100.00
Nsit-Atai	0.14	0.01	84.94	2.49	49.33	1.92	134.41	100.00
Nsit-Ibom	3.85	0.41	105.86	3.10	32.99	1.28	142.70	100.00
Nsit-Ubium	0.28	0.03	146.39	4.29	59.27	2.30	205.94	100.00
Obot Akara	83.70	8.98	139.46	4.09	31.31	1.22	254.47	100.00
Okobo	1.25	0.13	94.67	2.78	204	7.93	299.92	100.00
Onna	0.00	0.00	87.79	2.57	74.55	2.90	162.34	100.00
Oron	3.21	0.34	10.16	0.30	40.94	1.59	54.31	100.00
Oruk Anam	37.18	3.99	363.53	10.66	130.53	5.07	531.24	100.00
Udung-Uko	1.30	0.14	17.15	0.50	42.33	1.65	60.78	100.00
Ukanafun	27.73	2.97	193.25	5.66	31.07	1.21	252.05	100.00
Uruan	13.16	1.41	154.28	4.52	181.94	7.07	349.38	100.00
Urue-Offong	0.00	0.00	24.47	0.72	102.62	3.99	127.09	100.00
Uyo	15.52	1.67	163.99	4.81	10.23	0.40	189.74	100.00
	<b>932.27</b>	<b>100.00</b>	<b>3411.37</b>	<b>100.00</b>	<b>2572.09</b>	<b>100.00</b>	<b>6915.73</b>	<b>100.00</b>

Key: SE-Spatial Extent, %C-LGA-Percentage Cover within the LGA

The study adopted various physical environmental domains such as slope, elevation, landuse and landcover, proximity to river channel and soil texture to establish the flood vulnerability levels of Akwa Ibom state. The established levels were categorized into low, medium and high vulnerability and their spatial extent cover was also established. The outcome of the study showed similarity with previous studies conducted using various physical environmental domains. Through domains such as landuse, elevation and proximity to river channel, Afolabi et al. (2022) established the vulnerability categories of communities in Isoko North LGAs low, medium and high vulnerability. Chukwuma et al. (2021) through conditional factors such as slope, landuse, elevation and soil texture, the vulnerability level of LGAs in Anambra state was determined. The approach adopted by this study; that is, the use of RS and GIS is a common approach to flood modelling. This was corroborated by various studies including that of Bello and Ogedegbe (2015), Orimoogunje et al., 2016 and Umar and Gray (2022). On the Landuse/Landcover, the activities with high vulnerability reported for this studies; that is, settlement, waterbodies, rocky land and sandy area are similar to those reported by Onuigbo et al. (2017). Wizer and Week (2020) opined that various anthropogenic activities affect the landuse and landcover of an area and it is capable of increasing the exposure. Among various landuse/landcover categories reported for this study, settlement was rated the highest among the high vulnerability for landuse/landcover. Changes in land use due to urbanization increases flood susceptibility (Kaspersen et al., 2015) as urbanization is largely associated with the removal of soil and vegetation and these are important factors for limiting surface runoff (Adeoye, 2012; Pradhan-salike & Pokharel, 2017). The outcome on elevation showed similarity with that of Berezie et al. (2019) which was able to establish the vulnerability level due to elevation of their study area. LGAs like Ikot Abasi, Eket, Esit Eket and Onna are among the highly vulnerable areas due to elevation characteristics. The vulnerability rating scale adopted for this study which was based on high (3), medium (2) and

Comment [TK49]: Give reference

Comment [TK50]: these

Comment [TK51]: Which are

Comment [TK52]: increase

low (1) vulnerability was similar to those adopted by Afolabi et al. (2022) and Berezie et al. (2019).

At the LGAs level, the two (2) LGAs found to be low flood vulnerability include Essien Udim and Ikono. The nineteen (19) LGAs found to be medium flood vulnerability include; Abak, Etim-Ekpo, Etinan, Ibesikpo-Asutan, Ibiono-Ibom, Ika, Ikono, Ikot Ekpene, Itu, Nsit-Atai, Mkpata-Enin, Nsit-Ibom, Nsit-Ubium, Obot-AkaraOron, Onna, Oruk Anam, Ukanafun, Udung-Uko and Uyo. Ten (10) LGAs found to be high flood vulnerability include Eastern Obolo, Eket, Esit-Eket, Ibeno, Ikot Abasi, Ini, Mbo, Okobo, Uruan and Urue-Offong/Oruko.

The outcome of the study corroborated with that of Berezie et al. (2019) which was conducted for LGAs and communities in Bayelsa State. Also, the outcome of the study showed similarity with that of Ozim et al. (2021) where the LGAs identified as high vulnerability are similar with the present study. From the study, Uyo was categorized into medium vulnerability with spatial extent of 163.33 km<sup>2</sup> (6.38%) out of the 2572.09 km<sup>2</sup> of the total area. At the communities' level, 138 communities were found to be with low vulnerability level while 429 communities and 228 communities were found to be within medium and high vulnerability level. Njoku et al. (2020) opined that population density of a communities influences the risk to flood vulnerability and accordingly, Lagos State is the most vulnerable because of LGAs with high population densities within high flood-risk zones. Other states with communities exposed to high flood-risk vulnerability include Rivers, Kogi, Cross River, Akwa Ibom, Anambra, and Delta.

### **Conclusion and Recommendations**

The Geospatial approach of the study further encourages the possibility of establishing the flood vulnerability level of an area through domains such as land use, elevation, and proximity to river bodies (drainage). The study concluded that domains of interest jointly contributed to the vulnerability level of Akwa Ibom State and majority of the LGAs and

**Comment [TK53]:** Conclusion should be written in a more quantifiable form. Some sentences from the abstract can be used here. For e.g. write the extent different flood vulnerability levels including their percentages.

communities of the state are categorized to be medium/moderate flood vulnerability level. The maps and lists of LGAs at different flood vulnerability zones are useful in all steps of disaster management (prevention, mitigation, preparedness, operations, relief and recovery) and should be considered during initial planning. Various human activities that can contribute to increase vulnerability such as building on river channel should be adequately monitored and prevented.

## References

- Adeoye, N. O. (2012). Spatio-Temporal Analysis of Land Use/Cover Change of Lokoja: A Confluence Town. *Journal of Geography and Geology*; 4 (4). <http://dx.doi.org/10.5539/jgg.v4n4p40>
- Afolabi, O. O., Emelu, V. O., Wali, E., Orji, M. C., Bosco- Abiahu, L. C., Yemi-Jonathan, O. I. T., Wali, O. A., & Asomaku, S. O. (2022). Geospatial Analysis of Flood Vulnerability Levels Based on Physical Characteristics and Resilience Capacity of Peri-Urban Settlements in Nigeria. *Journal of Geoscience and Environment Protection*, 10, 267-288. <https://doi.org/10.4236/gep.2022.108017>
- Bello, I. E. and Ogedegbe, S. O. (2015). Geospatial Analysis of Flood Problems in Jimeta Riverine Community of Adamawa State, Nigeria. *Journal of Environment and Earth Science*, 5(12), 2015
- Berezi O. K., Obafemi A. A., & Nwankwoala H. O. (2019). Flood Vulnerability Assessment of Communities in the Flood Prone Areas of Bayelsa State, Nigeria. *International Journal of Geology and Earth Sciences*, 5, 19-36.
- Chukwuma, E. C., Okonkwo, C. C., Ojediran, J. O., Anizoba, D. C., Ubah, J. I., & Nwachukwu, C. P. (2021). A GIS Based Flood Vulnerability Modelling of Anambra State Using Anintegrated IVFRN-DEMATEL-ANP Model. *Heliyon*, 7, e08048. <https://doi.org/10.1016/j.heliyon.2021.e08048>
- Das, M., Chattopadhyaya, A., & Basu, R. (2017). Spatial Flood Potential Mapping (SFPM) with flood probability and exposure indicators of flood vulnerability: Case study former Jalpaiguri District, West Bengal, India. *Journal of Geography & Natural Disasters*, 7(3), 1–8. doi:10.4172/2167-0587.1000210
- Danumah, J. H., Odai, S. O., Saley, B. M., Szarzynski, J., Thiel, M., Kwaku, A., Akpa, L. Y. et al. (2016). Flood Risk Assessment and Mapping in Abidjan District Using Multi-Criteria Analysis (AHP) Model and Geo-Information Techniques, (Cote d'Ivoire). *Geoenvironmental Disasters*, 3, Article No. 10. <https://doi.org/10.1186/s40677-016-0044-y>
- Gandini, A., Prieto, I., Garmendia, L., San-Jose, J-T. & Egusquiza, A. (2018). Adaptation to flooding events through vulnerability mapping in historic urban areas. *The International Archives of the Photogrammetry, Remote Sensing and Spatial Information Sciences*, 42(3/W4), 221-226.
- Lawal, D. U., Matori, A., & Balogun, A. (2011). A Geographic Information System and Multi-Criteria Decision Analysis in Proposing New Recreational Park Sites in University Teknologi Malaysia. *Modern Applied Science*, 5 , 39-55.

Comment [TK54]: Avoid color fonts and underlines.

Comment [TK55]: Avoid color fonts and underlines.

Comment [TK56]: Avoid underlines.

Comment [TK57]: What is W4?

- Meena, Y. R., & Gupta, A. K. (2017). A study on urban flood vulnerability in Vrishabhavathi Valley Watershed, Bengaluru, Karnataka using AHP, GIS and RS techniques. *International Journal of Advanced Remote Sensing and GIS*, 6(1), 2325–2342. doi:10.23953/cloud.ijarsg.298
- Mmom, P. C., & Ayakpo, A. (2014). Spatial Analysis of Flood Vulnerability Levels in Sagbama Local Government Area Using Geographic Information Systems (GIS). *International Journal Research of Environmental Studies*, 1, 1-8.
- Moreno, J. M., Sanchez, J. M., & Espitia, H. E. (2020). Use of Computational Intelligence Techniques to Predict Flooding in Places Adjacent to the Magdalena River. *Heliyon*, 6, e04872. <https://doi.org/10.1016/j.heliyon.2020.e04872>
- Njoku, C. G., Efiog, J. and Ayara, N. N. (2020). A Geospatial Expose of Flood-Risk and Vulnerable Areas in Nigeria. *International Journal of Applied Geospatial Research*, 11 (3)
- Njoku, C. G., Efiog, J., Uzoezie, A. C., Okeniyi, O. O., & Alagbe, A. O. (2018). A GIS Multi-Criteria Evaluation for Flood-Risk-Vulnerability Mapping of Ikom Local Government Area, Cross River State. *Journal of Geography, Environment and Earth Science International*, 15, 1-17. <https://doi.org/10.9734/JGEESI/2018/40527>
- Onuigbo I. C., Ibrahim P. O., Samaila-Ija H. A., Nwose I. A., Agada D. U., and Abimbola I. I. (2017). “Flood Vulnerability Mapping of Lokoja Metropolis Using Geographical Information System Techniques.” *Journal of Geosciences and Geomatics*, 5 (5), 229-242. doi: 10.12691/jgg-5-5-2.
- Ozim, C. E., Olufemi, O. S., Ekpo, A. S., Alamaeze, N. K. and Mbanaso, M. U. (2021). GIS Based Analysis of Niger-Benue River Flood Risk and Vulnerability of Communities in Kogi State, Nigeria. *European Journal of Environment and Earth Sciences*, 2 (5), 47-56. <http://dx.doi.org/10.24018/ejgeo.2021.2.5.187>
- Pradhan-salike, I., Pokharel, J. R. (2017). Impact of urbanization and climate change on urban Flooding: a case of the Kathmandu valley. *Journal Natural Resource Development*, 7, 56-66.
- Purnawali, H. S., Hariyanto, T., Pratomo, D. G and Hidayati, N. (2017). Flood Vulnerability Analysis Using Remote Sensing and GIS: A Case Study of Sidoarjo Regency. Regional Conference in Civil Engineering (RCCE) 568-577 The Third International Conference on Civil Engineering Research (ICCER), August 1st-2nd 2017, Surabaya – Indonesia
- Sarkar, D., & Mondal, P. (2020). Flood Vulnerability Mapping Using Frequency Ratio (FR) Model: A Case Study on Kulik River Basin, Indo-Bangladesh Barind Region. *Applied Water Science*, 10, 1-13. <https://doi.org/10.1007/s13201-019-1102-x>
- Saaty, T. L. (1980). *The Analytic Hierarchy Process: Planning, Priority Setting, Resources Allocation*. Mc Graw-Hill, New York, 19.
- Tamiru, H., and Dinka, M. O. (2021). Artificial Intelligence in Geospatial Analysis for Flood Vulnerability Assessment: A Case of Dire Dawa Watershed, Awash Basin, Ethiopia. *Scientific World Journal*, 6128609. <https://doi.org/10.1155/2021/6128609>
- Umar, N. and Gray, A. (2022). Flooding in Nigeria: a review of its occurrence and impacts and approaches to modelling flood data, *International Journal of Environmental Studies*, <https://doi.org/10.1080/00207233.2022.2081471>
- Wicht, M., & Osinska-Skotak, K. (2016). Identifying urban areas prone to flash floods using GIS – preliminary results. *Hydrology and Earth System Sciences*, 518, 1–22.
- Wizor, C. H., & Week, D. A. (2020). Geospatial Mapping and Assessment of Flood-Prone Communities in the Core Niger Delta, Nigeria. *Asian Journal of Advanced Research and Reports*, 9, 6-20. <https://doi.org/10.9734/ajarr/2020/v9i330220>

Comment [TK58]: Consistency should be maintained throughout the reference.