

Impact of different irrigation techniques on wheat crop micro-climate

ABSTRACT

Aim of this experiment is to study the impact of irrigation techniques on microclimate of wheat crop in terms of temperature and humidity. Randomized block design is used on the wheat crop (*Triticum aestivum* L.) variety Karan Narendra (DBW 222) at research farm of ICAR-CSSRI, Karnal during the *Rabi* 2021-22. In conventional practice treatment, higher temperature fluctuation was observed and was 0.5-1°C cooler as compared to other plots. Drip irrigation treatment showed most stable crop microclimate in terms of canopy temperature and humidity dynamics. A sharp rise in temperature at maturity cause dryness in crop and leads to lower productivity. Except at physiological maturity, canopy was cooler than the ambient air, while relative humidity was higher both during morning and evening hour.

Keywords: Wheat, canopy, temperature, relative humidity

1. INTRODUCTION

Wheat (*Triticum aestivum* L.) crop occupies an important position in Indian agricultural sector and overall financial system. It is the most important staple food of about two billion people (36% of the world population). In India, its cultivation is spread between 10°N to 37°N and cultivated under a wide range of agro-climatic conditions from Kashmir and other mountainous region to moist soils in the deltaic coastal areas and arid soils in Rajasthan (Singh and Supriya, 2017). It is the second staple food crop of India, cultivated in about 30.60 million hectares with a production of 102.28 million tonnes and productivity of 32.24 quintals per hectare. Climate variables viz. temperature, light, humidity, and rainfall in optimum conditions, exploit the full genetic potential of a particular variety by providing a suitable environment for crops and accounts for more than 20 percent of the variation in wheat yield (Dahiya *et al.*, 2020). Canopy temperatures provide a more realistic measure of microclimatic conditions and real conditions of crop stress exhibited in the field. Liu and Kang (2006) also reported that microclimatic changes in winter wheat crops occurred due to different irrigation practices in North China plain. Canopy temperature depression had an important role to explore the physiological basis of the grain yield of wheat (Bahar *et al.*, 2008). An increase in mean aerial temperature by 1°C resulted in a reduction of the vegetative period by about 3 days and reduction in grain yield of about 7 q ha⁻¹, reproductive period by 4.6 days (Kalra *et al.*, 2008), whereas temperature above 18.2 to 18.8°C cause a drastic reduction in grain yield by 23.2 to 42.2 per cent over the highest yield that achieved at the mean temperature of 18.2°C during reproductive phase of the crop (Solanki *et al.*, 2017). Keeping the foremost mentioned points in view, microclimate of wheat crop was studied under different irrigation techniques and tillage practices.

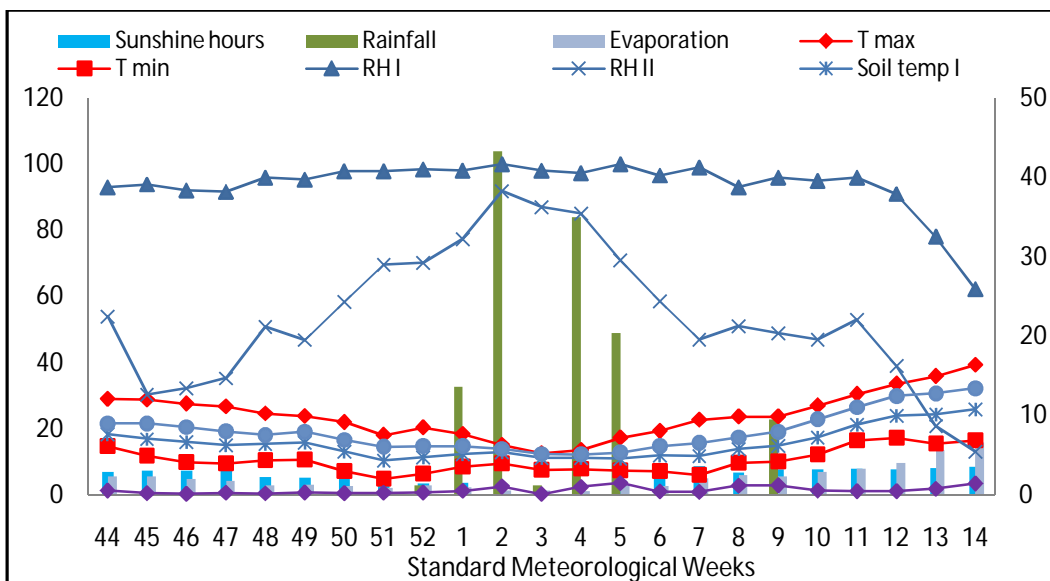
2. METHODOLOGY

2.1 Experimental site

41 The investigation was conducted during *Rabi* 2021-22 at the Research Farm of ICAR-
 42 Central Soil Salinity Research Institute, Karnal, situated at 29°43' N latitude, 76°58' E
 43 longitude and altitude of 245 meters.

44 2.2 Climatic conditions of experiment site

45
 46 The climate of Karnal is a typical semi-arid climate having hot and dry summer with
 47 desiccating winds. Maximum temperature is around 48°C during the summer months of May
 48 to June and temperature below freezing point accompanied by frost in the winter months of
 49 December and January are common in Karnal. Fig.1. depicts the weather conditions
 50 prevailed during the season at experimental area.



52 **Fig.1. Mean weekly values of weather parameters during Rabi (2021-22)**

53 Temperature (°C), relative humidity (%), bright sunshine hours (hrs), wind speed (kmph) (left margin);
 54 rainfall (mm), evaporation (mm) (right margin)

55 2.3 Experimental layout

56
 57 The experiment was conducted in randomized block design (RBD) with five replications.
 58 Treatments consist of conventionally tilled wheat with 6.5 cm surface irrigation provided at
 59 critical phenological stages (CRI, tillering, jointing, dough, and flowering) without straw mulch
 60 i.e farmers practice (T1); zero-tilled wheat with straw mulch and drip irrigation plot (T2); zero-
 61 tilled wheat with straw mulch and surface irrigation at critical phenological stages plot (T3);
 62 zero-tilled wheat with straw mulch and mini-sprinkler irrigation plot (T4). Full residue (1/3) of
 63 rice crop on surface was left over on surface as mulch. Karan Narendra (DBW 222) wheat
 64 variety was sown at recommended inter-row spacing of 22.5 cm. Total amount of irrigation
 65 applied in T1 is 26 cm, in T2 is 19.8 cm, T3 is 26 cm and T4 is 20.10 cm with rainfall of 12.42
 66 cm.

67 2.4 Observation recorded

68
 69 Micro-meteorological observations (canopy temperature and relative humidity) were
 70 recorded at 20 cm height from ground at 0700 (morning) and 1400 hours (afternoon) daily by
 71 a digital thermo-hygrometer (HTC-2). It was installed in the middle of every treatment to
 72 ensure the prevention of any outer disturbance.

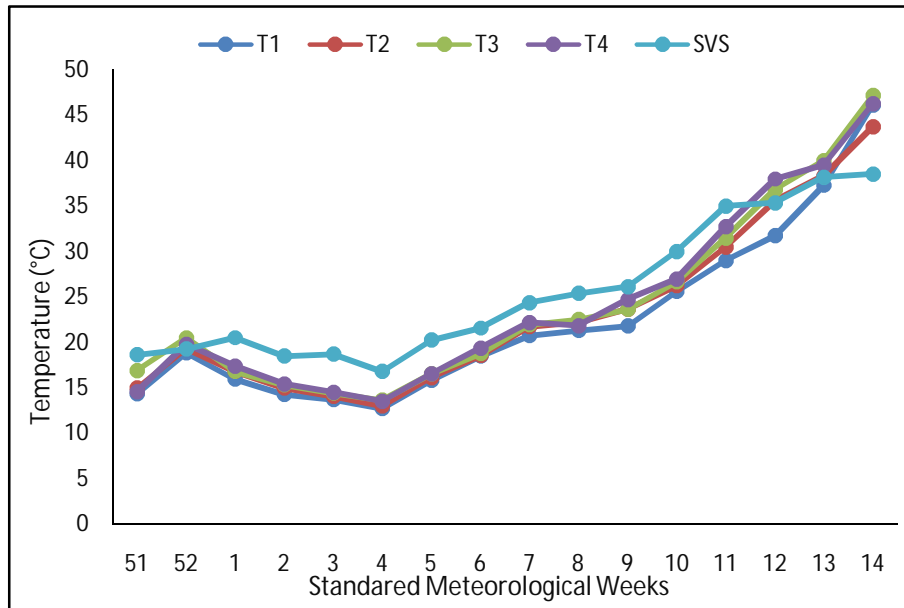
73
 74

75
76
77
78
79
80
81
82
83
84

3. RESULTS AND DISCUSSION

3.1 Influence of irrigation practices on canopy maximum temperature

Canopy maximum temperature at 1400 hours (afternoon) among various treatments during the season is depicted in Fig.2 along with maximum temperature of ambient. Highest canopy maximum was recorded in zero tillage mini-sprinkler irrigation treatment (T4) (47.16°C) followed by zero tillage surface irrigation treatment (T3) (46.26°C) and zero tillage drip irrigation treatment plot (T2) (43.07°C), whereas, lowest temperature was recorded in conventional tillage surface irrigation treatment plot (T1) (39.98°C) because of high transpiration cooling and heavy irrigation.

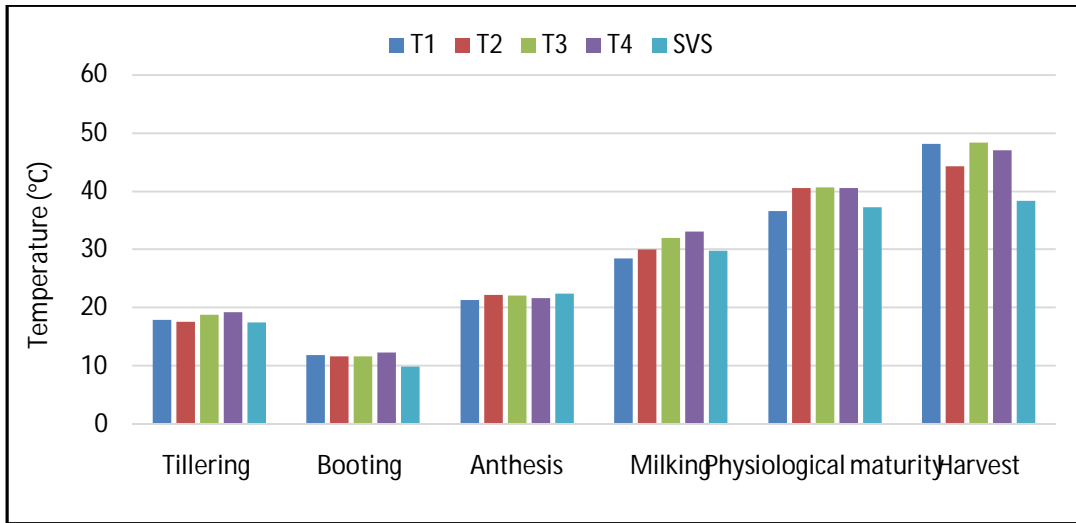


85
86
87
88
89
90
91
92
93
94
95
96
97
98

Fig.2. Canopy Maximum Temperature (1400 hours) during Rabi (2021-22)

Where, SMW- Standard meteorological weeks, T1- conventional irrigation plot, T2- drip irrigation plot, T3- surface irrigation plot with straw mulch, T4- mini-sprinkler irrigation plot, SVS- Stevenson's screen temperature

Canopy air temperature (Fig.3) of all the treatments was higher than the ambient air temperature during winter period (tillering and booting stage), at par during anthesis and higher during warm period (late February to April) at milking and physiological maturity stages due to heat wave. It was observed that maximum canopy temperature in afternoon was lower than the ambient air temperature up to milking stage and thereafter it was higher. When canopy temperatures are high, too much energy is lost through the process of transpiration by the plants, and the reduced residual energy results in poorer grain formation and lower yields.



99
 100
 101
 102
 103
 104
 105
 106
 107
 108
 109
 110
 111
 112
 113
 114
 115
 116

Fig.3. Canopy maximum temperature at various growth stages of wheat

Where, SMW- Standard meteorological weeks, T1- conventional irrigation plot, T2- drip irrigation plot, T3- surface irrigation plot with straw mulch, T4- mini-sprinkler irrigation plot, SVS- Stevenson's screen temperature

3.2 Influence of irrigation practices on canopy minimum temperature

Canopy minimum temperature for morning among various treatments during the season is depicted in Fig.4 along with minimum temperature of air. In morning, during winter period (post-jointing to anthesis), minimum canopy temperature was higher than the ambient minimum air temperature (Fig.4). As the crop matured ambient air minimum temperature at morning was higher than the canopy minimum temperature. During jointing to anthesis stage lowest mean minimum morning temperature was recorded in conventional tillage T1 (4.1°C), while during anthesis to crop maturity period it was recorded in zero tillage mini-sprinkler irrigation treatment (T4) (15.43°C). Presence of mulch material over T2, T3 and T4 helped to trap more heat in canopy and buffered the canopy conditions which prevented fall in minimum temperature during winter period of crop growth cycle.

117
 118

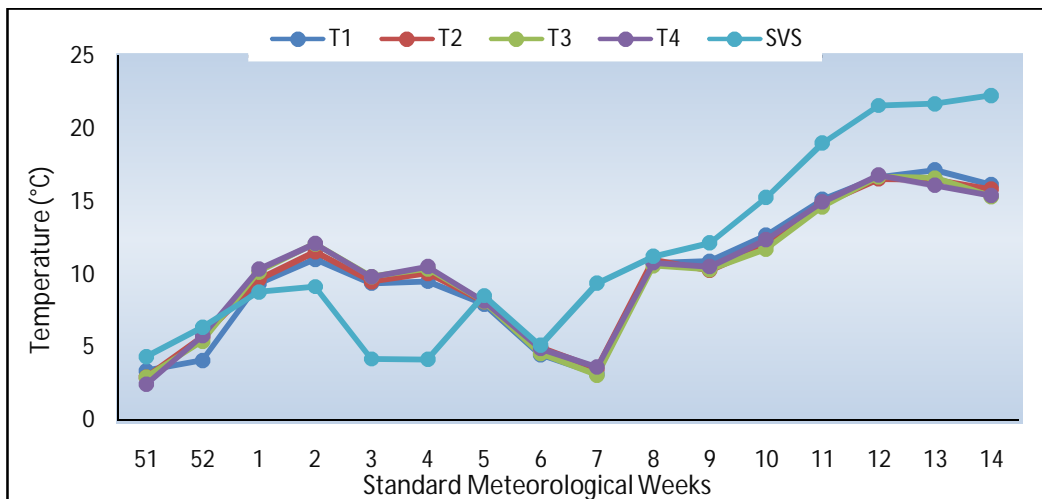
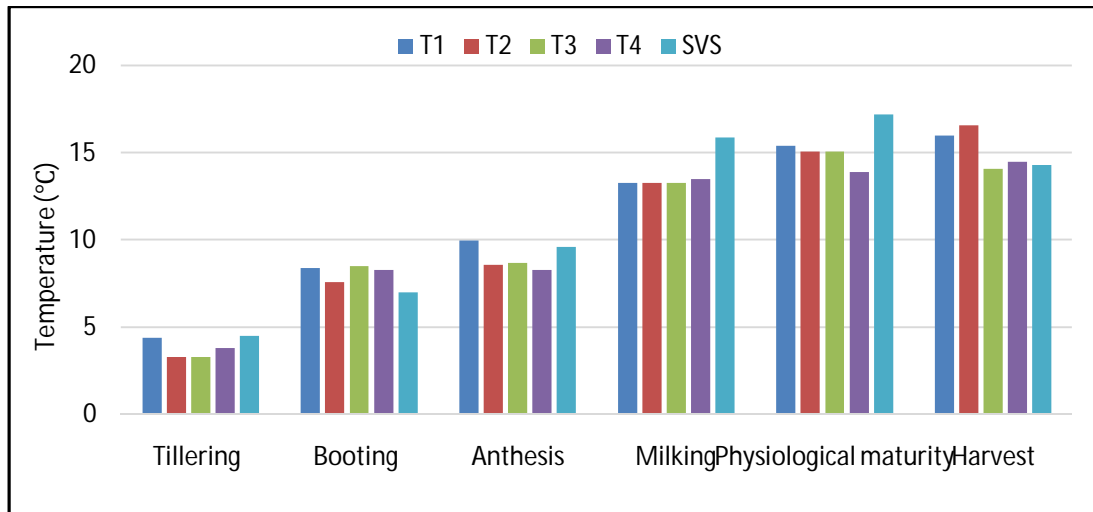


Fig.4. Canopy Minimum Temperature (0700 hours) during Rabi (2021-22)

119 Where, SMW- Standard meteorological weeks, T1- conventional irrigation plot, T2- drip irrigation plot,
 120 T3- surface irrigation plot with straw mulch, T4- mini-sprinkler irrigation plot, SVS- Stevenson's screen
 121 temperature
 122



123 **Fig. 5. Canopy minimum temperature at various growth stages of wheat**
 124 Where, SMW- Standard meteorological weeks, T1- conventional irrigation plot, T2- drip irrigation plot,
 125 T3- surface irrigation plot with straw mulch, T4- mini-sprinkler irrigation plot, SVS- Stevenson's screen
 126 temperature
 127

128
 129 Comparatively higher canopy temperature was recorded in T4 as it drains out the surplus
 130 water quickly because of higher infiltration rate (1.35 cm hr^{-1}), too much energy and water
 131 losses because of evapotranspiration and canopy interception, followed by T3, T2 and least
 132 in T1 because of high transpiration cooling and heavy irrigation. Due to more canopy cover
 133 and good crop stand, T1 was able to maintain a lower canopy temperature which was also
 134 observed by Dhaliwal *et al.*, 2019 in his work. Presence of mulch over T2, T3 and T4 trapped
 135 more heat in canopy and raised the temperature during winter period. Terminal heat stress
 136 was more pronounced in T4 and T3 because of higher solar radiation interception due to low
 137 canopy covers, mulch, higher soil temperature and moisture due to sensible heat transfer
 138 from soil to crop canopy via canopy interception and conduction, which in later crop growth
 139 stages increased crop canopy temperature. The effect of mulch was observed up to 100-110
 140 days after sowing. A sharp rise in canopy temperature of T4 accompanied by hot winds
 141 during the grain growth period caused forced maturity of the crop resulting in the production
 142 of immature and shriveled grains and reduced production. In T1, higher temperature
 143 fluctuation was observed and was $0.5\text{-}1^\circ\text{C}$ cooler as compared to other plots.
 144

145 3.3 Influence of irrigation practices on canopy relative humidity

146 Crop canopy was warmer and retains higher relative humidity (>20-30%) than ambient air.
 147 Relative humidity at 0700 hours (RH-I) was higher in T1 (99.7%) due to which leaf
 148 temperature of crop in T1 was lowest (24.9°C) (Fig.6). Relative humidity at 1400 hours (RH-
 149 II) was higher than air relative humidity throughout the crop growth period (Fig.7). Mulching
 150 aids in maintaining a good amount of humidity near soil surface. In T4, RH falls sharply
 151 because of high canopy temperature ($44\text{-}46^\circ\text{C}$), heat wave incidence, lower crop coefficient
 152 (K_c) (0.40) and amount of irrigation.

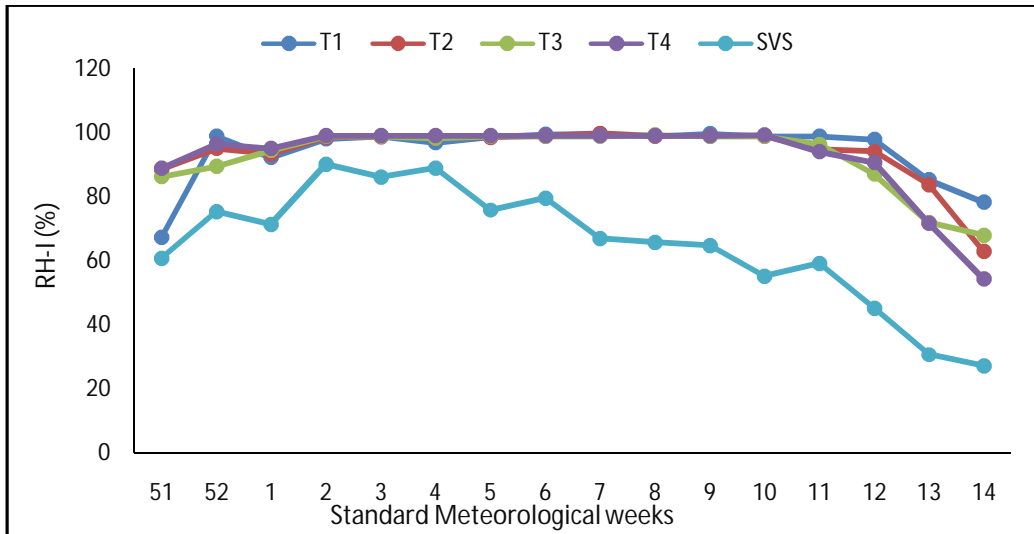


Fig.6. Canopy Relative Humidity at 0700 hours

Where, SMW- Standard meteorological weeks, T1- conventional irrigation plot, T2- drip irrigation plot, T3- surface irrigation plot with straw mulch, T4- mini-sprinkler irrigation plot, SVS- Stevenson's screen temperature

153
154
155
156
157
158

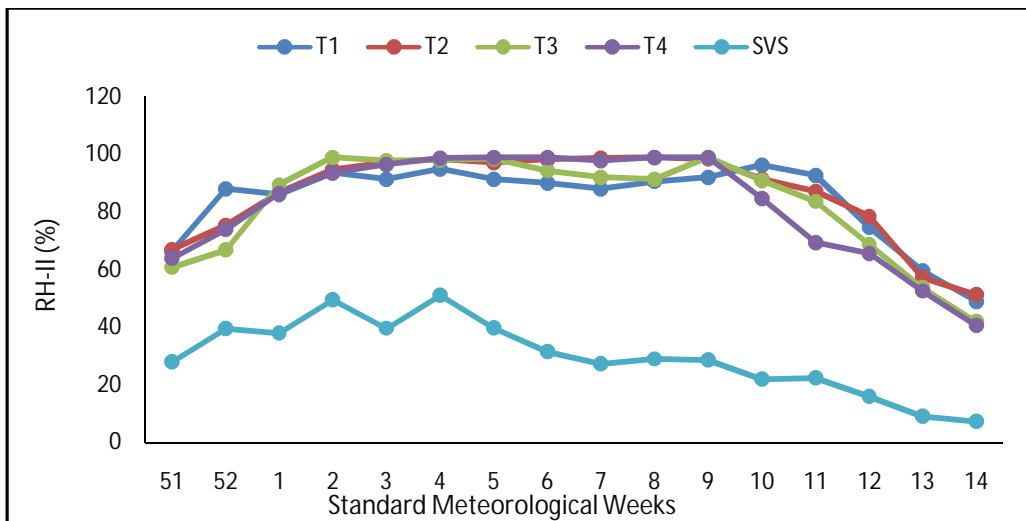


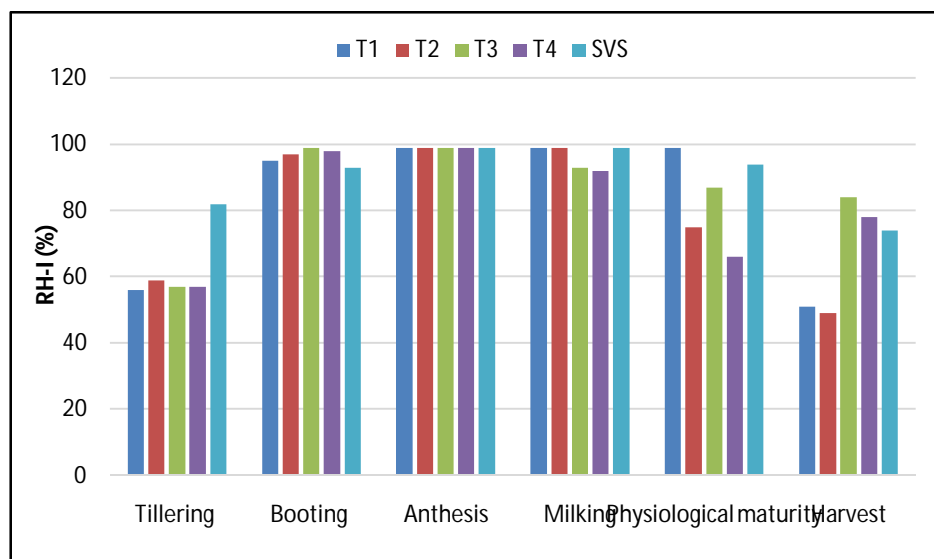
Fig.7. Canopy Relative Humidity at 1400 hours

Where, SMW- Standard meteorological weeks, T1- conventional irrigation plot, T2- drip irrigation plot, T3- surface irrigation plot with straw mulch, T4- mini-sprinkler irrigation plot, SVS- Stevenson's screen temperature

159
160
161
162
163
164
165
166
167
168
169
170
171
172
173

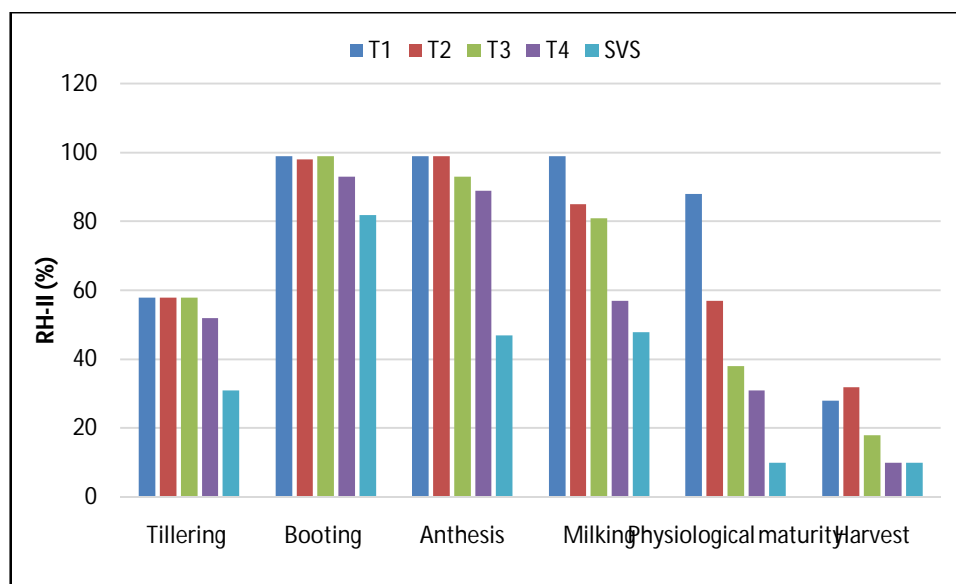
Highest mean canopy relative humidity (RH-I) during morning hours was recorded at booting stage (99%), while lowest was observed at harvest (40%) depicted in Fig.8. From jointing to milking stage there was a little difference in RH-I among the different treatments. In these growth stages RH-I was higher in conventionally surface irrigation method treatment and least in sprinkler irrigation system treatment (T4) (54%). Canopy relative humidity for afternoon (RH-II) among various treatments is depicted in Fig.9 along with relative humidity of air at same time. Maximum mean canopy relative humidity during afternoon hours was recorded during heading stage because of high rainfall, and was observed highest in T2 (98%) followed by T4 (98%), T3 (98%) and T1 (94%), while lowest was recorded during

174 harvest in T1 (13%), followed by T4 (31%), T3 (25%) and T2 (34%). It was observed that in
 175 mini-sprinkler irrigation treatment relative humidity fall sharply in later stages of the crop
 176 development.
 177



178 **Fig.8. Canopy Relative Humidity at 0700hrs of growth stages of wheat crop**

179 Where, SMW- Standard meteorological weeks, T1- conventional irrigation plot, T2- drip irrigation plot,
 180 T3- surface irrigation plot with straw mulch, T4- mini-sprinkler irrigation plot, SVS- Stevenson's screen
 181 RH
 182
 183



184 **Fig.9. Canopy Relative Humidity at 1400hrs of growth stages of wheat crop**

185 Where, SMW- Standard meteorological weeks, T1- conventional irrigation plot, T2- drip irrigation plot,
 186 T3- surface irrigation plot with straw mulch, T4- mini-sprinkler irrigation plot, SVS- Stevenson's screen
 187 RH
 188
 189

190 **3.4 Influence of irrigation practices on Stomata conductance, Transpiration**
 191 **and Photosynthetic rate**

192 At maximum vegetative growth, transpiration and photosynthetic rates depicted in Table1
 193 were significantly higher in T1 due to abundance water availability and lower relative
 194 humidity of canopy, while lesser stomata conductance was responsible for minimum water
 195 losses, which results in lavish growth of crop under the plot.

196

197 **Table1. Influence of different irrigation practices on various physiological parameters**
 198 **at maximum vegetative growth in wheat**

Treatments	Transpiration rate (mmol m ⁻² s ⁻¹)	Photosynthetic rate (μmol m ⁻² s ⁻¹)	Stomata conductance (mol m ⁻² s ⁻¹)
T1	16.23 ^A	0.33 ^A	1.11 ^C
T2	13.58 ^B	0.26 ^B	1.20 ^B
T3	12.99 ^B	0.21 ^C	1.30 ^A
T4	13.27 ^B	0.22 ^C	1.28 ^A
General Mean	14.02	0.26	1.22
p-Value	0.0167	<.0001	0.0007
CV (%)	6.56	4.67	2.42
SE(d)	0.751	0.01	0.024
LSD at 5%	1.8383	0.0238	0.0592

199 Experimental area faced high temperature (around >5°C) than normal during grain
 200 filling stage. Heat wave of 7 days stroked the crop which desiccated the crop and soil,
 201 reduced grain moisture and yield reduction of around 20-25%. Grain yield of T1 (47.35 qha⁻¹)
 202 was higher followed by T2 (45.92 qha⁻¹), T4 (43.66 qha⁻¹) and T3 (41.67 qha⁻¹), whereas, the
 203 harvest index significantly varied under different treatments. T2 had significantly higher
 204 harvest index (38.30%) as compared to T3 (37.50%), T4 (37.46%) and T1 had lowest
 205 (36.34%).

206 4. CONCLUSION

207 Field microclimate was affected by different types of irrigation methods not only during the
 208 period of irrigation but also during all irrigation intervals. Drip irrigation plot (T2) showed most
 209 stable crop microclimate in terms of soil and canopy temperature dynamics. A strong
 210 association of canopy temperature and humidity is seen with the method of irrigation applied.
 211 Deficit irrigation application in T4 with higher evapotranspiration losses and infiltration rates in
 212 zero tilled plots (T4 and T3) faced heat stress at maturity. T4 recorded to have highest
 213 canopy temperature at 1400 hours because of deficit irrigation and higher solar radiation
 214 interception in canopy, while T1 has lowest canopy temperature because of heavy irrigations
 215 and dense canopy cover. Crop canopy was warmer and retains higher relative humidity (>20-
 216 30%) than ambient air. Mulches helped in warming the air near soil surface, resulting in
 217 higher (2-5 °C) canopy temperature.

218

219 Conference disclaimer:

220 Some part of this manuscript was previously presented in the conference: 3rd International
 221 Conference IAAHAS-2023 "Innovative Approaches in Agriculture, Horticulture & Allied
 222 Sciences" on March 29-31, 2023 in SGT University , Gurugram, India. Web Link of the
 223 proceeding: [https://wikifarmer.com/event/iaahas-2023-innovative-approaches-in-agriculture-
 224 horticulture-allied-sciences/](https://wikifarmer.com/event/iaahas-2023-innovative-approaches-in-agriculture-horticulture-allied-sciences/)

225 **COMPETING INTERESTS**

226 Authors have declared that no competing interests exist.

227

228 **REFERENCES**

- 229 Bahar B, Yildirim M, Barutcular C, and Ibrahim GENÇ. Effect of canopy temperature
230 depression on grain yield and yield components in bread and durum wheat. *Notulae*
231 *Botanicae Horti Agrobotanici Cluj-Napoca*. 2008;36(1): 34-37.
- 232 Dahiya P, Mishra EP, Mehra B, Khichar ML and Niwas R, 2020. Impact of Climatic Variability
233 on Wheat Yield in Indian Subcontinent. *Journal of Agrometeorology*. 2020;
234 Volume22(1): 141-148
- 235 Dhaliwal LK, Buttar GS, Kingra PK, Singh S and Kaur S. Effect of mulching, row direction
236 and spacing on microclimate and wheat yield at Ludhiana. *Journal of*
237 *Agrometeorology*, 2019;21(1): 42-45.
- 238 Kalra N, Chakraborty D, Sharma A, Rai HK, Jolly M, Chander S, Kumar PR, Bhadraray S,
239 Barman D, Mittal RB and Lal M. Effect of increasing temperature on yield of some
240 winter crops in northwest India. *Current science* 2008; 82-88.
- 241 Liu HJ and Kang Y. Effect of sprinkler irrigation on microclimate in the winter wheat field in
242 the North China Plain. *Agricultural Water Management*. 2006;84(1-2): 3-19.
- 243 Singh M and Supriya K. Growth Rate and Trend Analysis of Wheat Crop in Uttar Pradesh,
244 India. *International Journal of Current Microbiology and Applied Sciences*, 2017;6(7):
245 2295-2301.
- 246 Solanki NS, Samota SD, Chouhan BS and Nai G. Agrometeorological indices, heat use
247 efficiency and productivity of wheat (*Triticum aestivum*) as influenced by dates of
248 sowing and irrigation. *Journal of Pharmacognosy and Phytochemistry*. 2017;6(3):
249 176-180.

250

251