

Detection of Bright Band Heights from Vertical Profile of Radar Reflectivity in Akure, South Western Nigeria

ABSTRACT

The (kindly remove) bright band is an important phenomenon that occurs in radar observations of precipitation. It is a layer of intense reflectivity caused by the melting of the snowflakes in the atmosphere. Accurate detection of bright band properties (rephrase) is essential for the estimation of precipitation rates, characterization of precipitation types as required in the Agriculture, Aviation, Navigation, Telecommunication sectors etc. Bright Band Height (BBH) is a vital parameter in the determination of rain height, rain-induced radio signal attenuation and mitigation techniques. This paper presents an empirical study on the measurement of BBH and Zero Degree Isotherm Height (ZDIH) from Micro Rain Radar (MRR) data obtained in Akure, Nigeria. Vertical profile of radar obtained during stratiform rainy events were examined to detect bright bands and its features. Analysis of the result show (showed) that the ZDIH varies between 4.48 and 4.60 km while the BBH also vary from 4.16 to 4.48 km during intense rainy events in September and October 2010. The derived propagation data would be needed for the optimization and improvement of quality of service (QoS) offered by earth-space links during rainy events in Akure and its environs.

Keywords: Bright Band, Precipitation Rates, Rain height, Rain-induced Attenuation, BBH, ZDIH

1. INTRODUCTION

Radar is a powerful tool used for remote sensing of the atmosphere, particularly in weather forecasting, monitoring and detection of distant objects. One of the most significant applications of radar in weather monitoring is the detection of precipitation. Radar sends out electromagnetic waves that bounce off precipitation particles in the atmosphere, and the resulting echoes are used to determine the location, intensity, type and motion of precipitation [1]. Radar reflectivity is a measure of the strength of these echoes, and it is commonly used to estimate the intensity of precipitation.

In the study of Radar reflectivity profile, a special range of altitude where refractivity values vary significantly is known as the bright band (BB). The BB is a region of enhanced radar reflectivity caused by a change in the physical properties (such as?) of precipitation particles as they fall through the freezing level of the atmosphere. Specifically, as precipitation particles, such as snowflakes and ice crystals, fall through the freezing level, they begin to melt and merge with other particles, forming larger raindrops. This process results in an increase in the size of the precipitation particles, which, in turn, leads to an increase in the radar reflectivity of the precipitation (this sentence is long enough to attract reference). The presence of BB is one of the most striking features of radar reflectivity profile. It is a horizontal band of high reflectivity that occurs in the melting level of hydrometeors. It occurs when the precipitation falls through a layer of sub-freezing temperatures and partially melts, forming a layer of mixed-phase particles. This layer has a higher reflectivity compared to the surrounding precipitation particles, resulting in the BB signature in the radar reflectivity profile [2-3]. The BB phenomenon is one of the most studied features of radar reflectivity in precipitation research (owing to what?). The temperature of the top of BB is assumed to be roughly 0° C, hence, the nomenclature zero degree isotherm height (ZDIH). The BB is usually present below the ZDIH during stratiform precipitation but it is mostly absent during convective cloud [4-

5]. The mid-point of the BB is usually detected with the observation of maximum radar reflectivity and it is called bright band height (BBH) as indicated in Figure 1.

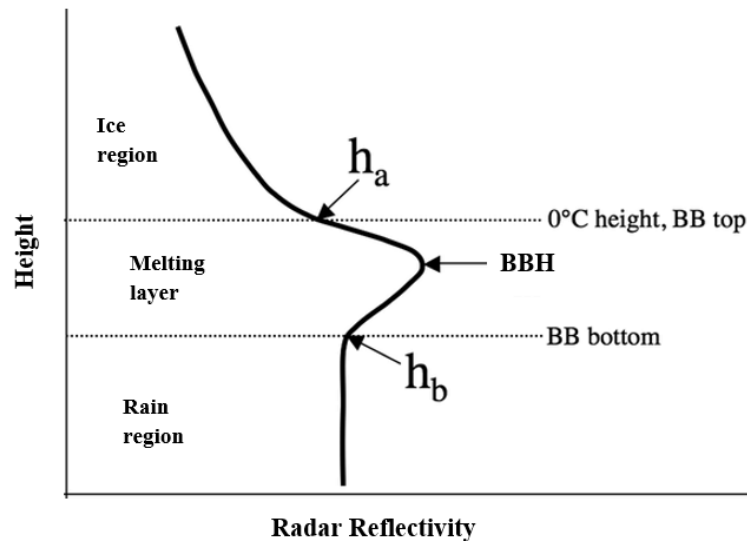


Figure 1: Illustration of the Vertical Profile of Radar Reflectivity

The detection of the bright band height is essential in precipitation research as it provides information on the precipitation type, the vertical distribution of precipitation particles, and the thickness of the melting layer. The height of the bright band can also be used to estimate precipitation amount, which is crucial for hydrological applications [6]. The BBH and ZDIH is a location-dependent parameter which vary spatially (with or depending on what please?) hence, it is more accurate when measured locally (reference is required).

The purpose of this research is (was) to study, detect and measure the BBH from the vertical profile of radar reflectivity in Akure, South Western Nigeria, using the MRR Data. The research also measures (measured) ZDIH and compares (compared) the results with previous works. The significance of this study lies in the fact that radar rainfall estimates are widely used in hydrological and meteorological applications, such as flood forecasting, drought monitoring, and water resource management. The bright band height and zero degree isotherm heights play significant role in the estimation of rain heights and rain-induced attenuation in satellite communication [7-8]. Accurate detection of the height of the bright band is crucial for improving the accuracy of radar rainfall estimates and mitigating the impacts of extreme weather events.

Various techniques and algorithms have been developed to detect the bright band height from radar reflectivity profiles. One of the widely used techniques is the vertical profile analysis, which involves analyzing the vertical distribution of reflectivity in the radar signal. The bright band height is determined by identifying the maximum reflectivity value in the profile, which corresponds to the melting layer height [2]; [3].

2. METHODOLOGY

The available one-year data (2010), employed for this research is an archived data retrieved from the MRR (MRR on first use, it should be in full) installed at the Observatory Garden of the Communication Physics Research Group (CPRG) at the Federal University of Technology, Akure (FUTA), Nigeria. The observatory garden has a coordinate of 7° 15'N, 5° 15'E and altitude of 358 m above mean sea level (add ref). The MRR is a vertically-pointing radar operating at 2.4 GHz [9]. It has a temporal resolution of 1

minute obtained by integrating reflectivity measured over every 10s. It has a vertical resolution of 160 m measurable up to 4.8 km above **ground**(use appropriate scientific language) level [10]. The vertical profile analysis is performed by averaging the reflectivity values over successive height bins of 160 which is executed by the algorithm embedded in the MRR.

The retrieved raw data which are in txt format were converted to excel format (.xls) by importing them to the Microsoft Excel application. Radar reflectivity (in dBZ) and altitude (in meters) were extracted and sorted into months to identify the wet months, rainy days and period of intense rainfall. The reflectivity was plotted against altitude and analyzed for the presence of a bright band as described subsequently.

The bright band region begins from altitude where the reflectivity increases sharply and apparently returns to its initial value as indicated in Figure 1[11]. The bright band height which correspond to the melting layer height is identified as the altitude where the reflectivity reaches its peak value.

3. RESULTS AND DISCUSSION

3.1 Vertical Profile of Radar Reflectivity

The date and time of the rainy events were extracted and sorted from the available data. The graph of radar reflectivity against altitude were plotted for the extracted rainy events and the results **were**(are) presented in Figures 2-5. The heights of the bright bands detected during some rainy events in the selected days are the altitudes of maximum radar reflectivities as shown in Figures 2a, 3a, 4a, and 5a. The corresponding daily mean values are also presented in Figures 2b, 3b, 4b, and 5a.

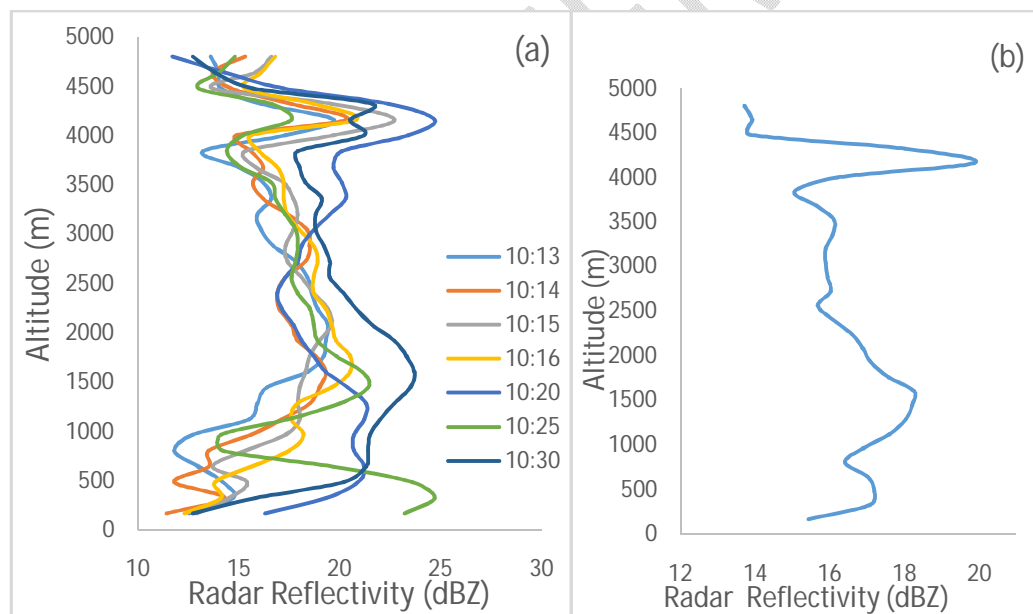


Figure 2: Vertical profile of radar reflectivity for; (a) a typical rainy day, September 3, 2010 (b) the average value of the rainy day

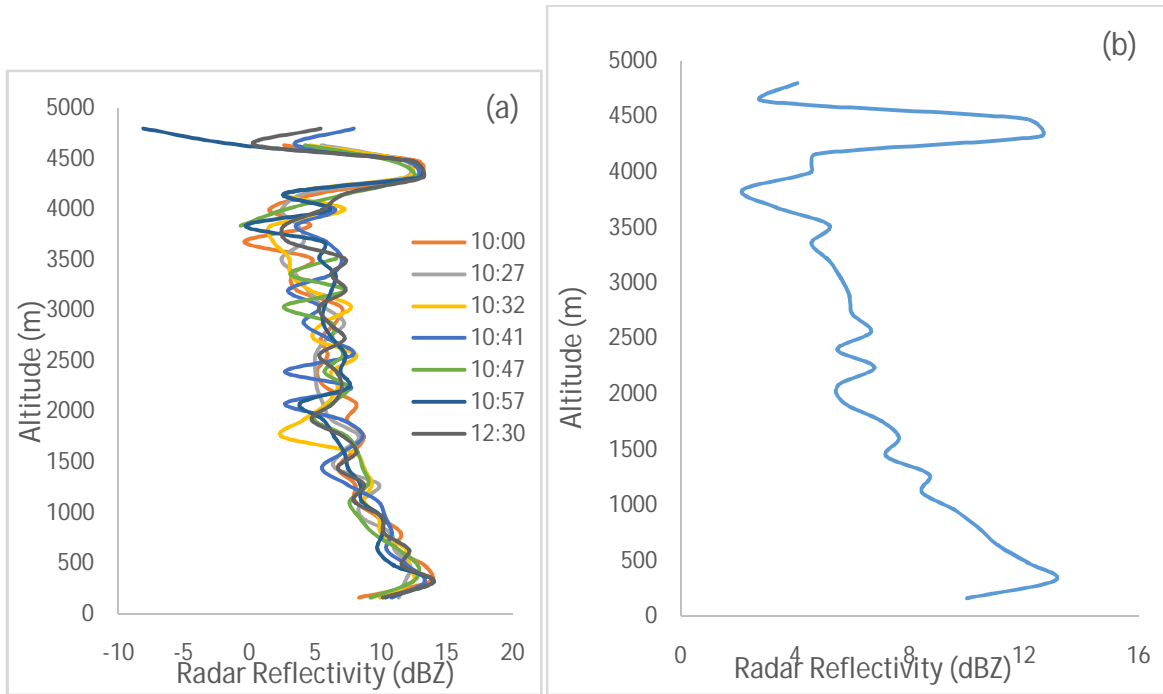


Figure 3: Vertical profile of radar reflectivity for; (a) a typical rainy day, September 21, 2010 (b) the average value of the rainy day

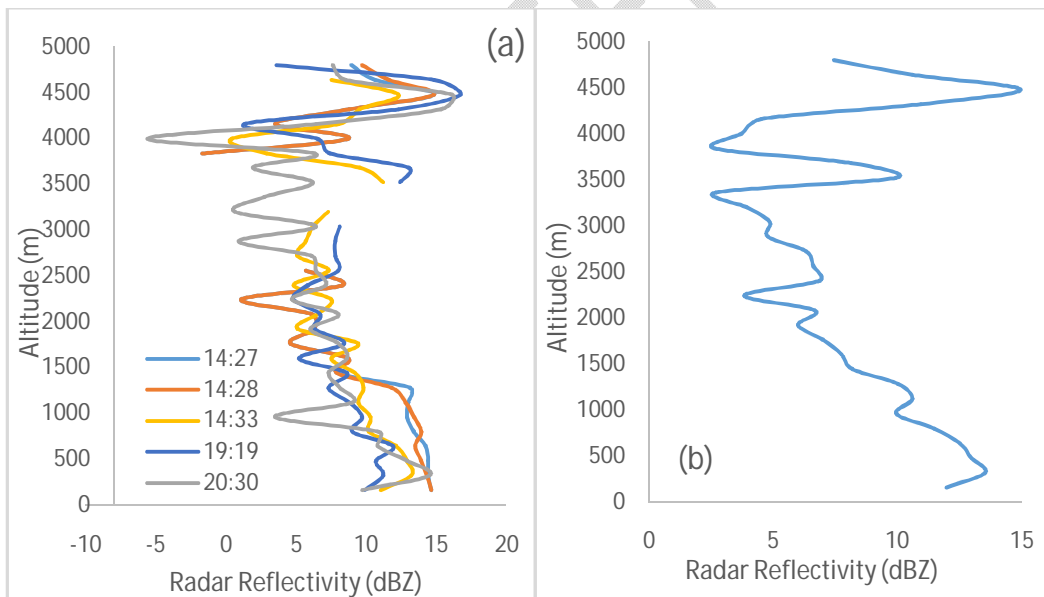


Figure 4: Vertical profile of radar reflectivity for; (a) a typical rainy day, October 7, 2010 (b) the average value of the rainy day.

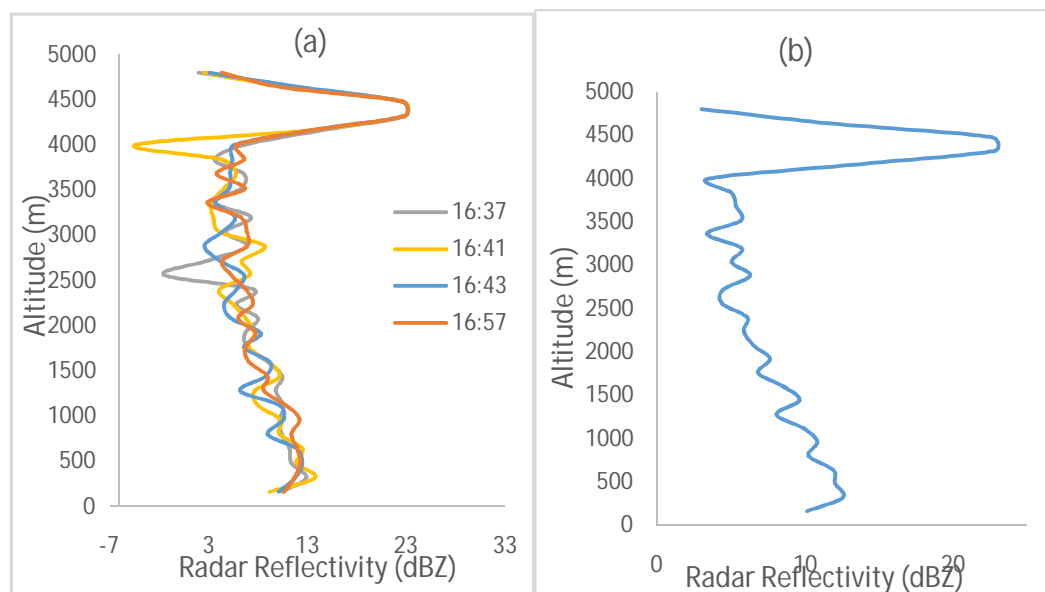


Figure5: Vertical profile of radar reflectivity for; (a) a typical rainy day, October 28, 2010 (b) the average value of the rainy day

The nature of the graphs depict the expected trend of vertical radar reflectivity profiles as enumerated in several literatures. The three distinct layers (Rain, Melting and Ice regions) are well defined in all the graphs including the BBHs and ZDIHs as illustrated in Figure 1.

A close observation of these curves reveals that the top of melting layer (i.e.ZDIH) varies from 4.48 to 4.80 km while the BBH varies from 4.16 to 4.48 km as presented in Table 1. The differences between the daily means of the BBH and ZDIH lies between 320 and 480 m. This is in agreement with some previous researches which also reported varying differences between 300 m - 500 m in the tropics (Austin 1950 [12], Harris *et al.*, 2000 [13], Awaka *et al.*, 2009[14], Olurotimi *et al.*, 2017[15]).

Table 1: The BBH and ZDIH observed during some selected rainy days

Intense Rainy Days	BBH (m)	ZDIH (m)	Difference (m)
September 3, 2010	4160	4480	320
September 21, 2010	4320	4640	320
October 7, 2010	4480	4800	320
October 28, 2010	4320	4800	480

(kindly tell us what informed your choice of these rainy days and how they were determined?)

3.2 Comparison between the ZDIH obtained from the MRR and GPM Data

The available daily mean values of the ZDIH from the MRR were compared with the corresponding ZDIH from the GPM and presented in Table 2. Comparison shows that the GPM values are slightly higher for all the days with an average percentage difference of about 4.05%. The daily percentage differences are

less than 10% for all the rainy days considered hence, the GPM data is recommended for estimation of rain heights and rain-induced attenuation in the absence of ground-measured MRR Data.

Table 2 Comparison of ZDIH from two difference sources

Intense Rainy Days	ZDIH from MRR	ZDIH from GPM	Percentage Difference (%)
September 3, 2010	4480	4828	7.2
September 21, 2010	4640	4873	4.8
October 7, 2010	4800	4914	2.3
October 28, 2010	4800	4892	1.9

4.1 CONCLUSION

The research **studies(studied)** the observation and detection of bright band for some selected rainy events in September and October 2010. The mean values of vertical profile of the radar reflectivity reveals the top of the bright band (ZDIH) and the BBH. The observed ZDIH is not a single value but **varies(varied)** between 4.48 and 4.60 while the BBH also **vary (varied)** from 4.16 to 4.48 km for each rainy event during the studied period. The difference between the mean values of the ZDIH and BBH is about 320 km which is in agreement with previous researches conducted in the tropical zones(**kindly state a clear reference and do a proper compares**).

REFERENCES

1. Bhatta NP, Priya MG. Radar and Its Applications. International Journal of Circuit Theory Applications. 2017;10(3):9
- [2] BringiVN, Chandrasekar V. Polarimetric Doppler Weather Radar: Principles and Applications. Cambridge University Press; 2001
- [3] Fabry F, Zawadzki I. Long-term Radar Observations of the Melting Layer of Precipitation and their Interpretation. Journal of Atmospheric Sciences. 1995;52(5):838-851.
- [4] Battan LJ. Radar Observation of the Atmosphere. The University of Chicago Press, Chicago:1973; 324
- [5] Houze RA. Stratiform Precipitation in Regions of Convection, A meteorological Paradox? American Meteorological Society Journal. 1997;78(10):2179 – 2196.
- [6] Brandes EA, Ikeda K, Zhang G, Ryzhkov AV, Schuur T. The bright band and associated precipitation structure observed in a narrow cold-frontal rainband. Journal of Applied Meteorology, 2002;41(11):1181-1194.
- [7] Lawal YB, Falodun SE, OjoJS. Temporal Evolution of Atmospheric Parameter-profiling on Rain Height over two Geoclimatic Regions in Nigeria, Journal of Atmospheric and Solar-Terrestrial Physics. 2020; 211 105482

- [8] Lawal YB, Falodun SE, Ojo JS, Olurotimi EO. Geoclimatic characterization and latitudinal dependence of rain heights over Nigeria, *Journal of Physics Conference Series*, IOP Publishing, 2021: 2034. doi:10.1088/1742-6596/2034/1/012010
- [9] Ojo JS, Akoma DB, Olurotimi EO. Dynamical Evolution of Vertical Profile of Rain Structures Observed using Ground-based Radar over a Tropical Station. *Heliyon*, 2021. doi:10.1016/j.heliyon.2021.e06888
- [10] Tomiwa AC, Ajewole MO, Ojo JS. IEEE 2014 XXXIth URSI General Assembly and Scientific Symposium (URSI-GASS) - Beijing, China - Classification of Tropical Convective and Stratiform Rains using a Micro Rain Radar and its Effect on Microwave Radio Signals in Akure, 2014; 1–4. doi:10.1109/ursigass.2014.6929268
- [11] Hooper JEN, Kippax AA. The bright band- a phenomena associated with radar echoes from falling rain, *Quarterly Journal of the Royal Meteorological Society*. (1950;76(328):125-132. <https://doi.org/10.1002/qj.49707632803>
- [12] Austin PM, Bemis AC. A quantitative study of the “bright band” in radar precipitation echoes. *Journal of Meteorology*. 1950;7:145-151.
- [13] Harris GN, Bowman KP, Shin DB. Comparison of freezing-level altitudes from the NCEP reanalysis with TRMM precipitation radar brightband data. *Journal of Climate*. 2000;13:4137-4148.
- [14] Awaka J, Iguchi T, Okamoto T. TRMM PR Standard Algorithm 2A23 and Its Performance on Bright Band Detection. *Journal of Meteorological Society of Japan*. 2009;87(A):31-52.
- [15] Olurotimi EO, Sokoya O, Ojo JS, Owolawi PA. Observation of bright-band height data from TRMM-PR for satellite communication in South Africa. *Journal of Atmospheric and Solar Terrestrial Physics*. 2017;160: 24-33. DOI: 10.1016/j.jastp.2017.05.004