

Original Research Article

Invitro Evaluation of Anticancer Activity of the Methanolic and Aqueous Extracts of the Petals of *C.tinctorius*l., (Safflower Florets)

Abstract

Free radicals are compounds that contain unpaired electron in their outermost orbital, which are capable of reacting with any macromolecules. Antioxidants are compounds that scavenge these free radicals by accepting or donating a pair of electrons and make them less reactive. A redox balance between the free radicals and antioxidants should be maintained. If this is not maintained either due to decreased antioxidant content or excessive free radicals, oxidative stress condition prevails, which is involved in the pathogenesis of various diseases including cancer.

Cancer is a rapidly progressing disease, which is characterized by uncontrolled cell division and failure of apoptosis. Highly oxidative environment promotes the development of cancer. Hence, therapies have been formulated with antioxidant compounds, which scavenge the free radicals and prevent cancer progression.

The anticancer activity of the methanolic and aqueous extracts of the petals of safflower florets were analyzed using breast cancer cell lines namely MCF-7 . The changes in cell growth and apoptosis as a consequence of treatment with the standard chemotherapeutic drug, in the presence and the absence of the petals of safflower floral extracts, were assessed. The effects of the extracts were also compared with the standard chemotherapeutic drug commonly used for treatment, namely cisplatin for MCF-7 .

The anti-proliferative effect of the extracts was assessed using breast cancer cell lines. In each of the cell line, the dose and time period was optimized. The, MCF-7 cells were incubated with increasing concentrations of the methanolic and aqueous extract of the petals ranging from 5-150ug/ml for different time periods (6, 12, 18, 24, 36, 48, 72) and the cell viability was analyzed using MTT assay. Our finding shown that the extracts inhibited the proliferation of the cells in a dose and time dependent manner. In MCF-7 cell lines, the optimal dose of petals of safflower florets was found to be 150ug and the optimal exposure time was found to be 12h, 24h and 48h MCF-7 cell lines respectively. Hence, the cells were treated with these optimal dose and time periods for further studies.

Key Words: C. tinctorius florets, secondary metabolites, Anticancer Activity, Cisplatin Drug.

INTRODUCTION

Since ancient times, people have been exploring the used to eczema, swelling and constipation [8]. Capparis nature particularly plants in search of new drugs. This has zeylanica (Brassicaceae) is thorny stout climbing shrub resulted in the use of large number of medicinal plants used as antidote to snake bite, to cure swelling of testicle, with curative properties to treat various diseases [1]. small pox, boils, cholera, colic, hemorrhage, neuralgia, Nearly 80% of the world's population relies on traditional sores, pneumonic and pleurisy [2]. Clematis gouriana medicines for primary health care, most of which involve

Comment [MF1]: Results

Comment [MF2]: S

(Ranunculaceae) is climbing glabrous shrub, Bruised the use of plant extracts [3]. In India, almost 95% of the leaves and stems are used for killing of lice [4]. Cleome prescriptions were plant based in the traditional systems viscosa (Cleomaceae) is erect viscous glandular herb of Unani, Ayurveda, Homeopathy and Siddha [5]. The Seed paste taken orally with hot water in antihelminthic study of plants continues principally for the discovery of and liver complaints [6-7]. Cochlospermum religiosum novel secondary metabolites. Around 80% of products (Cochlospermaceae) is deciduous tree. The oral were of plant origin and their sales exceeded US \$65 administration of gum powder about 20g mixed with ghee billion in 2003 [4].

Cancer has been a constant battle globally with a lot of development in cures and preventative therapies. The disease is characterized by cells in the human body continually multiplying with the inability to be controlled or stopped. Consequently, forming tumors of malignant cells with the potential to be metastatic⁽⁹⁾. Current treatments include chemotherapy, radiotherapy and chemically derived drugs. Treatments such as chemotherapy can put patients under a lot of strain and further damage their health. Therefore, there is a focus on using alternative treatments and therapies against cancer (10).

For many years herbal medicines have been used and are still used in developing countries as the primary source of medical treatment. Plants have been used in medicine for their natural antiseptic properties. Thus, research has developed into investigating the potential properties and uses of terrestrial plants extracts for the preparation of potential nonmaterial based drugs for diseases including cancer³. Many plant species are already being used to treat or prevent development of cancer. Multiple researchers have identified species of plants that have demonstrated anticancer properties with a lot of focus on those that have been used in herbal medicine in developing countries.(11-12)

Safflower, *Carthamus tinctorius L.* is a thistle herb belonging to the family Asteraceae. Safflower Plants are 30-150 cm tall with globular flower heads (capitula) and, commonly, brilliant yellow, orange or red flowers. It is one of humanity's oldest crops cultivated in india mainly for oil from the seeds and a dyes from the flowers..Though, safflower flowers have been used in preparations of ayurvedic medicines in india and also merit mention in European and Japanese pharmacopoeias, the interest in this crop has been rekindled in the last few years as the medicinal use of these flowers in china, has become more widely known. China has a significant area under safflower plantation, but is grown almost exclusively for its flowers, which are harvested for use in traditional medicines. Safflower flowers are used in china for the treatment of many illnesses as well as in the preparation of "tonic tea". Safflower is now mainly grown in india for its much-valued edible oil. Safflower produces oil rich in polyunsaturated fatty acids (linoleic acid 78 percent), which play an important role in reducing blood cholesterol .

Comment [MF3]: ????

In india, flowers of safflower are regarded as stimulant, sedative and as a promoter of menstrual discharge. In large doses, they are laxative. The main active ingredients in safflower florets are safflower yellow(carthamidin) , which is water-soluble,and safflower Carthamin(red pigment)which is alcohol soluble are used in some preparations. Many clinical and laboratory studies support the use of safflower medicines for Cardiovascular disease and pain and swelling associated with trauma(8).

MATERIAL AND METHOD

DMEM (Dulbecco's modified Eagles medium), MTT [3-(4,5-dimethylthiazol-2-yl)-2,5-diphenyl tetrazolium bromide], trypsin, EDTA Phosphate Buffered Saline (PBS) and were purchased from Sigma Chemicals Co. (St. Louis, MO) and Fetal Bovine Serum (FBS) were purchased from Gibco. 25 cm² and 75 cm² flask and 96 well plated purchased from eppendorf India.

Comment [MF4]: Source of Cisplatin Drug.??

Maintenance of cell line:

The MCF-7 breast adenocarcinoma cancer cell line were purchased from NCCS, Pune and the cells were maintained in MEM supplemented with 10 % FBS and the antibiotics penicillin/streptomycin (0.5 mL⁻¹), in atmosphere of 5% CO₂/95% air at 37 °C.

Preparation of Test Compound:

For MTT assay, Each Test compounds were weighed separately and dissolved in aqueous and methanol. With media make up the final concentration to 1 mg/ ml and the cells were treated with series of concentrations from 10 to 100 µg/ ml.

Comment [MF5]: How can you get the extract and from where you collect it ?please write a procedure

MCF-7 cell viability by MTT Assay:

Principle:

MTT Assay is a colorimetric assay that measures the reduction of yellow 3-(4,5-dimethylthiazol- 2-yl)-2,5-diphenyl tetrazolium bromide (MTT) by mitochondrial succinate dehydrogenase. The assay depends both on the number of cells present and on the assumption that dead cells or their products do not reduce tetrazolium. The MTT enters the cells and passes into the mitochondria where it is reduced to an insoluble, dark purple coloured formazan crystals. The cells are then solubilized with an DMSO and the released, solubilized formazan reagent is measured spectrophotometrically at 570 nm.

Method

Cell viability was evaluated by the MTT Assay with three independent experiments with six concentrations of compounds in triplicates. MCF- 7 cells were trypsinized and perform the tetraphen blue assay to know viable cells in cell suspension. Cells were counted by haemocytometer and seeded at density of 5.0 X 10³ cells / well in 100 µl media in 96 well plate culture medium and incubated

Comment [MF6]: Clear which compounds ???or extract ???

overnight at 37 °C. After incubation, take off the old media and add fresh media 100 µl with different concentrations of test compound in representative wells in 96 plate. After 48 hrs., Discard the drug solution and add the fresh media with MTT solution (0.5 mg / mL⁻¹) was added to each well and plates were incubated at 37 °C for 3 hrs. At the end of incubation time, precipitates are formed as a result of the reduction of the MTT salt to chromophoreformazan crystals by the cells with metabolically active mitochondria. The optical density of solubilized crystals in DMSO was measured at 570 nm on a microplate reader. The percentage growth inhibition was calculated using the following formula and concentration of test drug needed to inhibit cell growth by 50 % values is generated from the dose-response curves for each cell line using with origin software.

$$\% \text{ Inhibition} = \frac{100 (\text{Control} - \text{Treatment})}{\text{Control}}$$

Result

Comment [MF7]: ??? delete

In vitro cytotoxic analysis by MTT assay

To study the anticancer effects, the methanolic and aqueous extracts of safflower florets was tested for its effect on inhibition of cell growth against cell line i.e., MCF-7 over a concentration range of 5-100 µg/ml to determine their potency (IC₅₀ ie,50% inhibition of cell growth) by comparing with standard .Assay was performed in vitro on exponentially growing cells. The activity was evaluated by measuring the levels of surviving cell after incubation with the test samples, using the MTT assay and is represented in below Figures.

Comment [MF8]: You did not appear how can you get the extract ????

Among all the prepared extracts tested for the in-vitro anticancer activity using MTT assay MCF-7 cells, aqueous extract of safflower florets Manjira and SSF-658 was found to be potent cytotoxic (IC₅₀ value 34.17,36.96µg/ml) as similar to standard drug cisplatin(Table-2). In addition to methanol extract pbns-12 was found to be potent cytotoxic with IC₅₀ value 47.401±3.991 respectively, whereas aqueous extract of Nari-6, methanolic extract of SSF-658,A1 and Manjira showed the moderate anticancer activity against MCF-7 cell lines(Table-1). This anticancer activity may be due to the various phytoconstituents present in the plant, indicates the presence of flavonoids and triterpenoids ,fattyacids of aqueous and methanol extract which may attribute the anticancer activity.

Results

Comment [MF9]: You must write small paragraph before the table that explain your work results

Table-1.Result for Carthamin extracts

Comment [MF10]: With whom , clear what are the differences between table 1 and 2 ????

S. No	Sample	IC ₅₀ (µg/ml)
-------	--------	--------------------------

	Name	
1	SSF-658	120.483±4.253
2	pbns-12	47.401±3.991
3	A1	328.079±9.909
4	Manjira	114.74±4.041
5	Nari-6	ND
6	CO-1	258.061±7.297
7	Cisplatin	4.653±0.330

Comment [MF11]: Clear these abbreviation ???

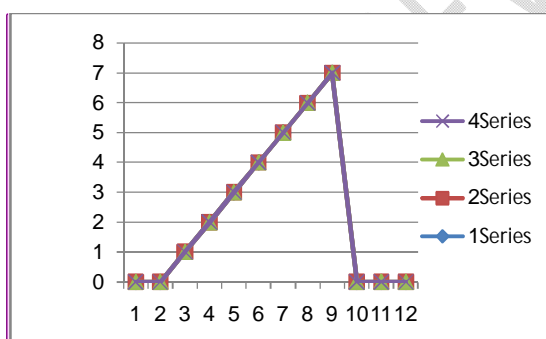
Comment [MF12]: Clear these abbreviation ???

Comment [MF13]: Clear these abbreviation ???

Comment [MF14]: Clear these abbreviation ???

Comment [MF15]: Clear these abbreviation ???

Comment [MF16]: Clear these abbreviation ???



Comment [MF17]: Series 1 2 3 4 what does it mean ????

Comment [MF18]: What are the Y axis and X axis ??? please clear ???

Fig 1. In Vitro Cytotoxicity

Table-2. Anti-cancer activity of carthamidin extract

Sl No	Compound in MCF7	IC50 (µg/ml)
1	SSF 6 58	34.967±4.506
2	Manjira	34.873±3.112
3	PBNS -12	ND
4	Nari - 6	393.407±8.774

5	Cisplatin	4.653±0.330
6	A1	ND
7	CO-1	ND

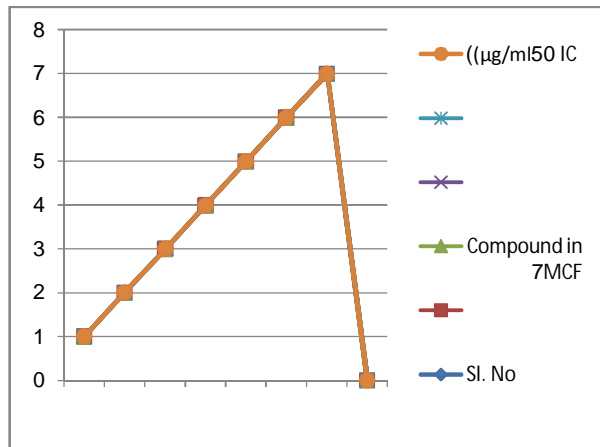


Fig 2. Cytotoxic effect of the sample in MCF7 Cell line

Comment [MF19]: ????

Comment [MF20]: ????

Comment [MF21]: ????

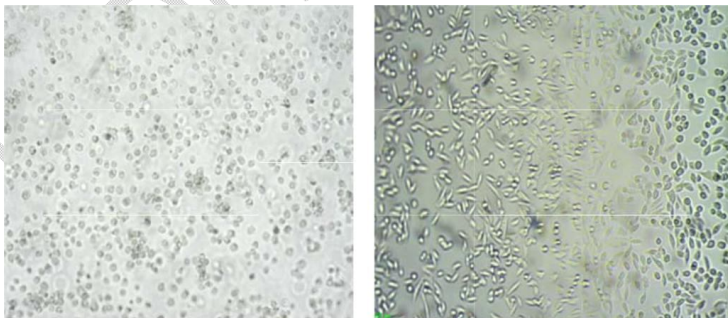


Plate 1. MCF-7 cell lines with media and sample MCF-7 cell lines with media and sample +MTT

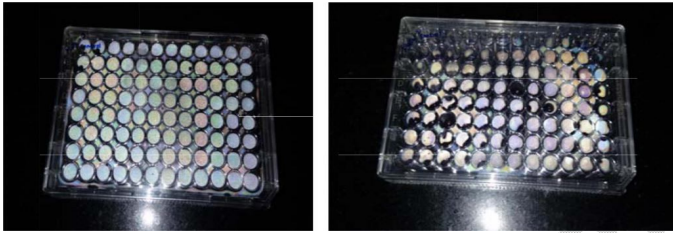


Plate 2.EL ISA plate s with MC F-7 cell lines along with sample and MTT reagent.

Comment [MF22]: ????

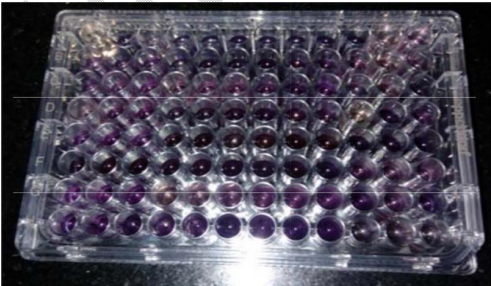


Plate 3. ELISA plate showing positive reaction

Comment [MF23]: Change title

UNDER PEER REVIEW

DISCUSSION

Among all the prepared extracts tested for the in-vitro anticancer activity using MTT assay MCF-7 cells, aqueous extract of safflower florets Manjira and SSf-658 was found to be potent cytotoxic (IC50 value 34.17,36.96µg/ml) as similar to standard drug cisplatin(Table-2). In addition to methanol extract pbns-12 was found to be potent cytotoxic with IC50 value 47.401±3.991 respectively, whereas aqueous extract of Nari-6, methanolic extract of SSF-658,A1 and Manjira showed the moderate anticancer activity against MCF-7 cell lines. This anticancer activity may be due to the various phytoconstituents present in the plant, indicates the presence of flavonoids and triterpenoids ,fattyacids of aqueous and methanol extract which may attribute the anticancer activity.

Comment [MF24]: Poor discussion , please try to discuss the results deeply and supporting with another studies and researchs

CONCLUSION

The present study concludes that, aqueous extract of safflower florets carries potent activity specifically against breast cancer cells MCF-7 cell lines. The results also revealed that the extract also significantly inhibited the colony formation and also the migration property of cancer cells in a dose-dependent manner. This unique mechanism can qualify the C.tinctorius aqueousextract to become a better treatment option for Breast cancer patients as appropriate.

REFERENCES

1. . Verpoorte, R., 1998. Chemodiversity and the Biological Role of Secondary metabolites, some thoughts for selecting plant material for drug development. Proc. Phytochem. Soc. Europe, Kluwer Publishers, 43: 11-24
2. Kirtikar, K.R. and B.D. Basu, 1993. Indian Medicinal Plants. Vol. I 2 Ed. Deheradun: nd International publishers, pp: 200-201.
3. Sandhya, B., S. Thomas, W. Isabel and R. Shenbagarathai, 2006. Complementary and alternative medicines, 3: 101-114.
4. Patwardhan, B., A.D.B. Vaidhya and M. Chorghade, 2004. Ayurveda and Natural products drug discovery. Curr Sci., 86: 789-799.
5. Oliver-Breuer, 1986. Medicinal plants in tropical West Africa (Cambridge University Press, Cambridge, UK).
6. Boopathi, A.C., 2009. Ethno medicinal plants and their utilization by villagers in Kumaragiri Hills of Salem district of Tamil Nadu, India. Afr. J. Trad. Cam., 6: 222-227.
7. Grabley, S. and Thiericke, R. (1999). Bioactive agents from natural sources trends in discovery and application. Advance Biochemical EngineeringBiotechnology, 64,101-54.

Comment [MF25]: Poor references try to use more ?????in addition the present of recentness is zero , you must update it

8. Zhang HZ, Dong ZH and She J. Modern study of traditional Chinese medicine, Vol 3. Xue Yuan Press, Beijing, China, 1998, 2057.
9. Ochwang'IDO, Kimwele CN, Oduma JA, Gathumbi PK, Mbaria JM, Kiama SG. Medicinal plants used in treatment and management of cancer in Kakamega County Kenya. *Journal of Ethnopharmacology*. 2014;151:1040–1055. PubMed. [GoogleScholar]
10. CancerResearchUK [Accessed 23 January 2015];
What is cancer? 2014 Available at: <http://www.cancerresearchuk.org/about-cancer.what-is-cancer>.
11. Freiburghaus F, Kaminsky R, Nkunya MHH, Brun R. Evaluation of African plants for their *in vitro* trypanocidal activity. *Journal of Ethnopharmacology*. 1996;55:1. [PubMed] [Google Scholar]
12. Kamatou GPP, Van Zyl RL, Davids H, Van Heerden FR, Lourens ACU, Viljoen AM. Antimalarial and anticancer activities of selected South African *Salvia* species and isolated compounds from *S. radula*. *South African Journal of Botany*. 2008;74:238–243. [Google Scholar]

UNDER PEER REVIEW

