

Smart Aquaponics System for *Oreochromis niloticus* Production

Abstract: Surigao City is situated in North Eastern part of Mindanao facing the Pacific Ocean where fish are abundant but prices are high. Fresh water fish such as Tilapia (*Oreochromis niloticus*) has less supply because the fishermen are still using the traditional fish pond method. This research aims to design and develop a smart aquaponics system that utilizes a recirculating aquaponics system (RAS) technology in order to increase the supply of Tilapia in the market. The study utilizes a developmental research design in order to produce an aquaponics system. The project utilizes two microcontrollers and multiple sensors to monitor the pH level, total dissolved solids, temperature and water level. The results of the study shows a 6% fish growth, the system operates consistently in terms of circuit functions and water circulation, the application software give real time data log, and the system consumed 193 watts of power. It is concluded that Tilapia can be mass produce using this system however further studies are needed to correlate with the Tilapia grown in the traditional fish pond.

Keywords: control, aquaponics, Tilapia (*Oreochromis niloticus*), smart, sensor

Comment [MM1]: Can Author(s) use font size as 14 so that it will be easy to the readers?

I. INTRODUCTION

Smart Aquaponics System for Nile Tilapia (*Oreochromis niloticus*) Production is a developmental idea that combines a bio-integrated agricultural production using internet of things-based technological method of producing *Oreochromis niloticus*. The project has three hardware systems namely water level control, smart feeding system, and water quality monitoring and control, each has a designated function. All of the systems are wirelessly connected to the internet via the Raspberry Pi. All the data gathered are analyzed and stored in the cloud and eventually decide to actuate the necessary relays. The systems were all smart and wirelessly connected, providing real-time monitoring and control.

The project was developed intending for the use of the small-scale commercial farming in the locals of the Surigao Del Norte. Traditionally, implementing aquaponics uses extensive human labor, absence accountability or responsibility to the environment, use of low-tech tools and is inefficient. Meanwhile, the project's intent with the use of new technology such as IoT, smart-sensor, and instrumentation control to address the common struggles of the farmers, saving so much labor cost, promoting safety, accuracy, and efficiency. The Project design is a low-cost, easy-to-use, and sophisticated equipment to be used in farming.

High quality tilapia has a ready local market and with great potential in foreign market. It provides a readily available supply of table fish for both rural and urban families. It is the source of cheap protein for Filipinos. Therefore, in line with the problem, we aim to create a smart aquaponics system that caters to the production of the Tilapia. With the help of the IoT technology, smart sensor and process instrumentation, the project was developed to create a facility that cater the production of tilapia ensuring the safety and its high quality, in addition to that, the system would be easily adapt the by small-scale commercial level farmer, coping the great market demand.

The goal of this research is to increase Tilapia (*Oreochromis niloticus*) production by incorporating smart technology and farming, which would enable for a thorough food production system that is still viable, generates slight waste that resembles nature's circular approach, requires daily tasks such as harvesting and planting that are labor-saving, and allows for greater control. Aquaponics can be used to integrate livelihood strategies for small-scale and poor households in order to guarantee food and small incomes. Moreover, compared to conventional agriculture, this sort of farming produces significantly more food with significantly less resources, space, and manpower.

In addition, this will be established and support proper production of Tilapia and provide automation that can be accessed via the internet. This technology with the state-of-the-art facility can provide productivity and reduce human labor, guaranteeing profit and efficient operation management. In this study, the most beneficial are the rural and urban families by providing them with a good product of Tilapia fish for one of their food sources.

Related Literature

In this section review some existing literature concerning Smart Aquaponics system.

Getting fish and plant water appears to be challenging. Diverse, land-and water-saving veggies may reduce production. Aquaponics acidity, water level, and water temperature [1]

A promising remedy to the current food and environmental issues confronting the globe is aquaponics farming. Because it uses less water, less pesticides, and fertilizer, this approach promises to be sustainable and kind to the environment. [2]

It combines aquaculture with hydroponics. Aquaponics needs clean water. -Measuring oxygen, temperature, and acidity. IoT, embedded electronics, and cloud computing facilitate aquaponics water quality monitoring. The system uses http, a standard protocol. HTTP and IoT enabled IoT aquaponics(IoT).[3]

The Internet of Things advances technology. Internet usage is common. IoT-based home security systems grew crucial as technology developed. Due to expensive microcontrollers and microprocessors, the current home security system was too expensive. A home security server and software are required online. Infrared sensors are passive or active. The sensors detect trespassers. [4]

Bluetooth feeds an LCD app. Out-of-range parameters trigger an SMS. A microcontroller-based aquaculture app will be created. Include or remove rated liquid in two high-speed dc pumps. User-friendly software assesses water quality and other features. [5] Small-pond farmers can't hire staff to manage water level, temperature, and fish/shrimp feeding. Cloud-integrated applications can monitor pH, water temperature, humidity, and pH. [6]

A study describes a prawn/fish pond management system. The system detects, displays, and estimates online stress using PDSS. Networking ponds enable centralized control and presentation of growth and development of fish in the event of an unexpected increase in population growth. [7] Smart Aquaculture automates feeding, cage monitoring, feeding schedule, and volume to save labor. Submerged fish cages minimize labor and feed costs in open-water aquaculture. We fitted a feeding mechanism and a smartphone to remotely control it for automated feeding. [8]

A proposed system would text pond owners of intrusions. Smart Fish Pond Management automatically replaces water whenever it drops. Sensors notify authorities of incidents. The device checks pH and adds lime as needed. Then, water temperature triggers a motor to pump water up or down. [9] Intelligent was created to automate Aquaponics technique for farms and tackle food security and water scarcity. It constructed a prototype to test the device's reliability. Separate control system monitors complex system continuously. This protects soil, uses water and nutrients efficiently, and fertilizes sustainably. [10]

Prawns need dissolved oxygen, temperature, and pH to survive. Manual monitoring generates issues in prawn farming, hence a remote intelligent system is recommended. The system employs an oxygen sensor to check water quality and oxygen level, and SMS informs the owner. GSM can send an SMS (GSM). [11] A deer farm RFID system is created using Mifare tags and a database. The app shows RFID-tagged deer's gender, species, and birth year. Deer are identified by weight, breed, and descent to help farmers keep track of their animals. [12]

Sensors assess water qualities. Arduino controller reads sensor data. WI-FI permits sensor data viewing online. This study proposes a low-cost IOT water quality monitoring technology (internet of things) for use in homes and businesses around the world. [13] Sensors assess water qualities. Arduino controller reads sensor data. WI-FI permits sensor data viewing online. This study proposes a low-cost IOT water quality monitoring technology (internet of things) for use in homes and businesses around the world. [14]

This paper presents an IOT-based water quality monitoring system. Measuring pH, turbidity, conductivity, dissolved oxygen, and temperature a microcontroller provides sensor data to the Raspberry Pi through Zigbee. The Cloud computing display sensor data on a browser for easy access. [15] "QOI-Aware Energy Management in Internet-of-Things Sensory Environments" by Zhanwei Sun, Chi Harold Li, ChatschikBisdikian, Joel W. Branch, and Bo Yang. Transparent and compatible with weaker protocols, keeping energy-efficiency without decreasing QOI. [16]

Malaysia's Transport Ministry is designing a flexible road tax scheme. Existing automobile tracking systems rely on GPS, which might be blocked by buildings or trees. VMAS examines automobiles using the Internet of Things (IoT) to help with road taxes and diagnostic inspections. [17]An app-controlled aquaponics system can adjust acidity, water level, temperature, and fish feeding. Sensor communicated real-time data to Ubuntu IoT Cloud server. Ultrasonic, pH, and temperature sensors all performed 99.94% of the time correctly. [18]

Hydroponics aquaculture (off-soil plant cultivation using mineral-enriched water). Aquaponics increases production. This research employs sensors and actuators to regulate and monitor aquaponics water quality and environmental conditions. Secure, low-cost, self-empowered, adaptable, dependable, and IoT-powered.[19]

Temperature, pH, and siphoning clean and re-course water using a heat source and fan. CPU, sensors sort water. Parameters finish jobs. IoT bridges physical and digital worlds. IoT monitors aquaponics conditions. [20]

Table 1 - Performance Comparison of the State of the Literature

Comment [MM2]: Can Author use all images, block diagrams, tables in centre format?

Author	Method	Advantages	Hardware	Features
S.S.M. A.-M.N. Mahfuz, 2020	System sends data to Mobile app through Bluetooth communication and also print in LCD	The changes in any parameter in an unacceptable range, an automatic notifying SMS will be sent from proposed system.	Microcontroller-based electronics system, Bluetooth, LCD and GSM	This system monitor and controlled via SMS from a remote distance
A. D. S. S. S. S. N. R. Kamiseti, 2012.	Electronics system for pond management in freshwater prawn fish cultivation. Possessed intelligence through Predictive Decision Support System (PDSS) for predicting stress factor on-line.	In case of several pond located at different location, the system provides centralized control and display facility networking of pond	Raspberry pi and IOT platform	The system continuously measure and controls hydro biological parameter. The system consist of centralized monitoring and display of various parameter and possesses AI for predicting stress factor.
I. V. Vinodhini, M. Sankar, M. Pajay, 2017)	GSM-based monitoring	Monitoring the oxygen level and SMS send to GSM by automation techniques	ATMEL 89S52 and GSM Modem	Oxygen sensor in detecting the water quality and measuring the oxygen level in the water and Short Message Service (SMS) technologies to deliver alert upon detecting of water quality level.
S. A. M. W. H. R. I. A. Mohamad Odeha, 2018.	Based on mmd bus TCP communication protocol and IOT technology smart aquaponics		PLC, Scada DCS	Real time monitoring and control based on Modbus protocol-widely used as a standard within industrial application
Researchers'	IOT technology in a Firebase Backend-as-a-service platform and database	Real-Time monitoring and control of Aquaponics parameters under a secured and exclusive Real-time database.	Arduino, Raspberry pi	Real-time Monitoring in a stand-alone typed, secured real-time database

Conceptual Framework

The waterfall model, represented in the picture below, is used by academics because of its linear and sequential structure. This study will continue to be conducted in cycles when key tasks are completed. The first step will be material acquisition, in which the researchers will obtain all necessary materials, followed by assembly, in which all materials will be assembled. The programming aspect will be a substantial work and a crucial component in the third stage of the research endeavor. If a mistake occurs when programming, the study might be returned to the assembly step. Following the researchers' programming of the system, the fourth step will be data collection, followed by the fifth stage of data finalization. The sixth step is the test and evaluate phase, which involves the researchers testing and evaluating the study project in preparation for a final evaluation. Data collecting from the final assessment is the seventh and final step. During this step, the researcher gathers input from stakeholders.

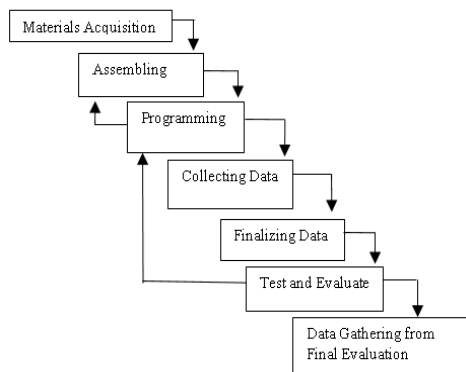


Figure 1 – Waterfall model Diagram of the Study

As shown in figure 1. The flow diagram begins with the analysis phase, during which the researchers ascertain the complaints and requests of the stakeholders and assess the viability of producing the materials and equipment required to visualize the research project, such as the Arduino Uno, Raspberry Pi, Actuator, and Sensors, before moving on to the Website phase. The process stage, where planning, development, system design, system analysis, testing, and implementation take place, is the next step the researchers take after visualizing. This stage is essential since it could entail intricate calculations and trial and error. The product from the Smart Aquaponics System for *Oreochromis niloticus* Production is expected to measure the parameters and deliver them wirelessly through the owner's cell phone.

Analysis Phase: The first stage of the project entails a thorough and detailed description of how the hardware and software that will be developed will behave. The first step is to compile stakeholder requests and complaints, in this case from the BFAR staff, fish dealer, and fishermen. The project's stakeholders then carry out a feasibility assessment and pre-survey. The project team then compiles and combines each person's plan for cost, scope, duration, quality, communication, and risk. Pre-Survey and status evaluation, followed by customer-facing Target need.

Design Phase: It is the planning and issue-solving process for a software solution. First, the demand from the target stakeholder (Design criteria: Coverage, capacity and quality). The detail design was then made by a designer on the project team (system diagram, power budget, coverage plan, Block diagram, Flow Chart arrangement). Finally, submit a proposal after discussing the installation issue (problems with the system diagram and stakeholder solutions) (installation, Drawing, Materials list).

Implementation Phase: This refers to the transformation of the demand and design specification into a tangible, operational IOT device during this phase. First, the project's implementation materials are organized (permit and contract). Then, a schedule is formed, materials are ordered, tolls are ordered, instructions are provided to the staff, and so on. Potential suppliers or subcontractors are then called in. This stage entails creating the project's actual output.

Testing Phase: The process of ensuring that the IOT solution complies with the original requirement and specification and serves the intended purpose is known as verification and validation, or IT. Test the usability, dependability, security, and performance first. Gray box testing should be used with IOT testing since it enables the creation of efficient test cases. In order to provide the scalability, adaptability, connection, and security required for IOT, Real Time Operating System is essential. Site and parameter audit comes last.

Evaluation Phase: It is the process of changing a software solution after delivery and deployment to improve performance and quality. First, everything is set up during this phase that is required to bring the project to a successful conclusion, including user manuals that provide instruction and training. The team is then dismantled and the project's direction is changed.

Objectives

The general objective of this study is to design and develop a smart aquaponics system for Tilapia production based on the RAS technology in order to increase the supply of tilapia in the market.

The specific objective of this study is the following:

1. To determine the parameters for the growth of the fish in terms of:
 - 1.1 Water level/depth
 - 1.2 Salinity
 - 1.3 Temperature
 - 1.4 pH
2. To design an aquaponics model utilizing smart system for tilapia production;
3. To implement a web-based smart aquaponics system for the growth of the fish;
4. To evaluate the system in terms of quantitative and qualitative process.

Comment [MM3]: Can Author(s) correct sentences?

II. METHODS

Research Design

The research design that is applicable in the project study is the Developmental Research Design. The project designed is the combination of aquaponics system and IOT technology. Maintaining good water quality within the aquaponics system is the fundamental to well-being, sustainability, and success of the system. It is necessary to understand the water condition required in each part of the system and how these parameters can be monitored and adjusted when necessary to maintain the well-balanced system. There are plenty of parameter involved but four key water quality parameters are special importance to follow closely and even online monitoring: 1.) Water level 2.) Water acidity/ basic of the water (pH) 3.) Water temperature 4.) Salinity. In addition, we also aided the laborious the manual and daily feeding and added the fish feeding system – which supplies a fixed amount of food and fixed interval of time with the aid of timer and motor.

Project Design

As seen in figure 2, pumps, turbines, an oxygen generator, and a feeding system are all part of the system, along with sensors such as a dissolved oxygen sensor, a water temperature sensor, a pH sensor, and a conductivity sensor.

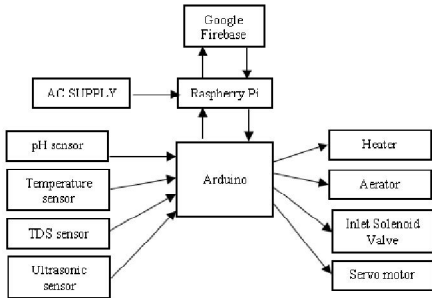


Figure 2 - Block Diagram of the Project

The Arduino, as the central processor, processes all of the programming and collects all of the data, which it then sends to the Raspberry to upload to the Google Firebase cloud, where analytics and monitoring take place.

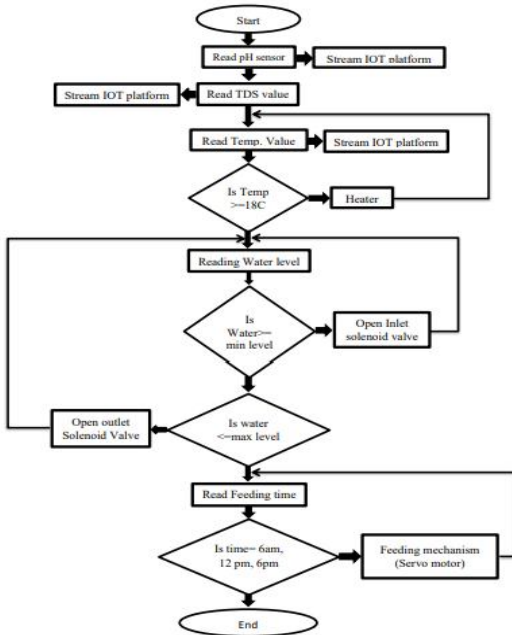


Figure 3 – Flowchart of the System

As seen in figure 3, the data is first collected from the sensors, which include a dissolve oxygen sensor, a water temperature sensor, a pH sensor, and a conductivity sensor. Then, using the Arduino board, monitor and operate the system by activating essential control relays such as a pump, oxygen generator, and heater based on the measured data. The collected data is then sent to an IoT cloud sensor for analysis and presentation.

Project Development

First step of doing this project study is the fishpond examination, during which the researchers do the feasibility study and record at the place. The situation analysis is the second phase in constructing this project research. At this step, the researchers gather pertinent data by pre-survey and interview the local farmer about the issue and hearing their complaint and request in order to evaluate potential solutions. The third step is online research or surfing the internet. In this section, we discuss the

resources required for our project study and how they will aid in the implementation of our research. The fourth step is data gathering, during which the researchers collect pertinent data and information from a variety of sources, and we obtain the aquaponics system and I.O.T. technology. The fifth phase is to develop the system design.

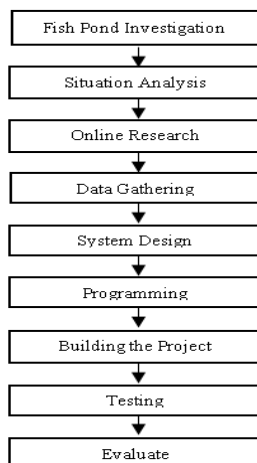


Figure 4 - Project Development Flow Chart of the Study

This is the section in which we will execute the system design by integrating the aquaponics system and IoT technology. Designing a system is a difficult undertaking since everything must be considered, including resources, budgets, sizes, the project's mechanism, and packaging. The sixth phase is programming both hardware devices and the IoT cloud platform, which involves writing the software necessary for the system to work. The seventh step is the construction of the project, during which the materials necessary to create a functional prototype are added. Testing is the eighth step. Additionally, testing, trial and error are required to determine whether or not the project is functioning properly. The last step is system evaluation, during which the project's performance, serviceability, aesthetics, and features will be assessed. The researchers will conduct a survey utilizing paper-based procedures such as questionnaires and personal interviews to get participants' thoughts.

Project Implementation

The study was carried out on a local farm. Deep water cultivation or rafting is used in the method. Floating planks or a flexible raft for pots capture holes. The roots of the plants are submerged in the dirt as they grow in these pots.

It's possible that the raft is floating straight on top of the fish tank. The system comes with a power outlet, a pump, turbines, an oxygen generator, a heater, and a feeding system that can be easily placed and installed. The control center, which included the Arduino, transistor control circuit, and Wi-Fi module, was mounted safely away from water and dust in a tiny box.

Project Setting

The study setting was executed in a fishpond built specifically for the research endeavor along the Panhutongan, Placer, Surigao Del Norte coastline.



Figure 5 - Plot Setting

Project Evaluation

The researchers employ both quantitative and qualitative data. The quantitative emphasize objective measurement and the statistical, mathematical, or numerical analysis of data. Then qualitative used to evaluate the performance or acceptability of the

system. It is to provide the researchers with the objective of determining the relevance or near-exact result of the study. The following is the data collection procedure:

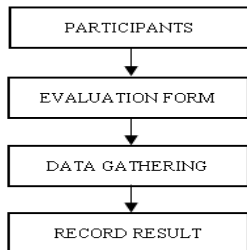


Figure 6 - Block Diagram of Data Collection Process

As seen in figure 6, the block diagram shows the flow of the data collection procedure. First, we should identify the participants of the study. The data is being collected in terms of the system stability by comparing the value of standard parameters to the data gathered by the sensors and then the results are going to record then its average will be calculated. Through interviews, the researchers gather information and data from one of the project’s stakeholders, the Bureau of Aquatic Resources. They also spoke with the fishpond owner about the state of their fish and some of the issues they faced. Following that the researchers focused their efforts on researching the components to be used and the circuit architecture for this project on the internet. When students are finished creating the project device, they must test it in the designated fishpond and keep track of the results.

The project study is going to be evaluated by the results that obtained from the process. And this process is the following to be evaluated in the project study:

1. Reliability- Are the values read by the sensors in this project study comparable to normal water parameter values?
2. Durability - How long and under what circumstances will the product function or last?
3. Effectiveness - Does the product successfully produce the desired output?

Participants of the Study

The project beneficiary, who includes the fishpond owner, is the major participant in this project research. An Electronics Engineer is required to assist the researchers in conducting the project study and ensuring that the project is properly implemented. Also needed are researchers who can study and design the product or technology.

Table 2 - Participants Involved in the Project Study

Participants	f(n=6)	% of Involvement
Farmers	2	20.00
BFAR	2	20.00
Aquaculturist	1	30.00
Electronics Engineer	1	30.00

Farmers, the Bureau of Fisheries and Aquatic Resources, aquaculturist, and electronic engineer must all take part in this study for it to be successful. Farmers have a 20% response rate because they will only provide a response if it is accurate. BFAR has a 20% participation rate because they will be conducting project inspections. Aquacultures have a 30% stake in the project, as she will monitor the growth, development, and production of *Oreochromis niloticus*. Electronics Engineer have a 30% chance of being the one to fix the researchers' system. The preceding frequency table displays the number of participants and their participation rate.

Instruments

As an IoT user, it's critical to understand the four pillars of the technology in order to reap the benefits that come with it: 1.) Device 2.) Data 3.) Analytics 4.) Connectivity

Multi-tester is a device that measures voltage, current, and resistance.

Steel Tape Measure is a steel measuring tape is a flexible ruler used to measure distance.

Weighing Scale are devices used to measure the weight of single or multiple objects.

Digital Thermometer is used to verify a smart temperature transmitter under flowing conditions and a successful calibration of the smart temperature transmitter.

Ruler is used to measure the length in both metric and customary units.
Python Software creates a communication of a devices and software via wireless.
Node GS a back in process in sending and receiving Google Firebase.
C# is for creating a standalone GUI application.
C++ is used for Arduino coding.

Research Ethics

The researchers in this study follow the ethical criteria required for performing their project study. To prevent plagiarism, the researchers examine intellectual property and provide correct recognition or credit for all research efforts. Second is to have cared for an animal in which researchers appreciate and care for animals when they are utilized in study. Finally, academics become socially accountable for promoting social good and avoiding or mitigating social harm via research, public education, and advocacy.

Statistical Tools

This project study uses mean standard deviation and frequency count as its statistical tool.

- a. A frequency count is a measure of the number of times that an event occurs. It is usually used in the study to determine the number of participants who are involved in the study.
- b. The mean of a population is calculated by combining all of the data points and then dividing the sum by the number of points. The formula is as follows:

$$\bar{x} = \frac{\sum x}{n}$$

- c. The standard deviation is a measure of a set of values' variation or dispersion. The formula is stated below:

$$SD = \sqrt{\frac{\sum(x-\bar{x})^2}{n-1}}$$

III. RESULTS AND RECOMMENDATIONS

3.1 Growth Parameters of Tilapia

The table below shows the collected data growth of Tilapia:

Table 3 - Growth Length of Tilapia Every 2 Days

Day	Large Fish		Small Fish	
	Length (in.)	Variance	Length (in.)	Variance
1	6.5		4.5	
3	6.8	0.3	4.8	0.3
6	7.2	0.4	5.1	0.3
9	7.4	0.2	5.4	0.3
12	7.7	0.3	5.7	0.3
15	8.0	0.3	6.0	0.3
18	8.3	0.3	6.2	0.2
21	8.6	0.3	6.4	0.2
24	8.9	0.3	6.7	0.3
27	10.1	1.2	6.9	0.2
	Average:	0.40	Average:	0.27
	%	6.15	%	6.00

The findings shown above indicate that Tilapia comes in both big and small sizes and has been seen to grow every 2 days. Then, as we can see, there is 6% of growth in both sizes in 27 days.



Figure 7 - Actual Captured Size of the Fish

The image above was a sample actual pictorial of the two sizes of the fish, which are the large and small.

Table 4 - Parameters of the Water

Water Parameters	Standard	Study
Water level / Depth	Stocking Density = 20kg/1000 liters	22,155 cubic inches 363.053 liters 7.26 kg of fish stocks
pH	6-9	8.56
Salinity	0-800 ppm	210.550 ppm
Temperature	18-30°C	28.255°C

A maximum stocking density of 20kg/1,000 liters is the basis for the suggested fish density. Additional aeration and mechanical filtration can result in higher densities, but beginners should avoid doing this (Cohen, Stankus 2014). In our case, we build an Aquaponics unit with a density of 363.05 liters that can be used to store a sample of 7.26 kg of fish stocks if used as directed. The biological activity of the nitrifying bacteria and their capacity to transform ammonia and nitrite are influenced by the pH level of the water. Because the pH is 8.56, which indicates that there is more ammonia present, it is recommended that the water be passed through both mechanical and biological filters. The water is considered to be fresh since its salinity level, which is measured as an average of 210.550, did not exceed the threshold of 800 parts per million (ppm), which defines salt water. The temperature is 28.25 degrees Celsius, which is within the range in which Tilapia may survive and thrive.

3.2 Design of Aquaponics Model Utilizing Smart System

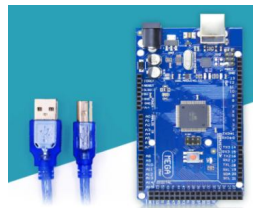


Figure 8 - Arduino Mega

The **Arduino Mega** is a microcontroller module based on the Atmega 1280 (datasheet).



Figure 9 - Raspberry Pi 3 model B+

The **Raspberry pi** is a dual band wireless LAN, Bluetooth 4.2 / BLE, faster Ethernet, and Power-over-Ethernet support (with separate PoE HAT).



Figure 10 - Ultrasonic Sensor

Ultrasonic sensor is an electronics device that uses ultrasonic sound waves to detect the distance between a target items that reflecting sound into an electrical signal.



Figure 11 - Relay Module

The **Relay module** is a separate piece of hardware that allows you to control remote devices.



Figure 12 - Servo Motor

A **Servo motor** is a shut servomechanism that regulates its movement and end position through position information.



Figure 13 - TDS (Total Dissolved Solids)

A **Total Dissolved Solid (TDS)** is a device to measure of the dissolved combined content of all inorganic and organic substance present in the liquid molecular.



Figure 14 - pH Sensor

A **pH sensor** is a schematic device used to accurately measure acidity and alkalinity in the water and other liquid substances.



Figure 15 - Temperature Sensor

A **Temperature sensor** is an instrument used to measure the degree of hotness or coldness and converts it into a readable unit.

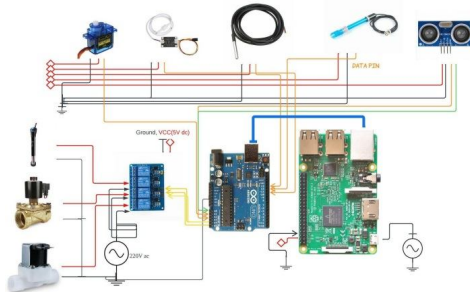


Figure 16 - Schematic Diagram

The Schematic Diagram shows the wiring placement and different materials of the project.

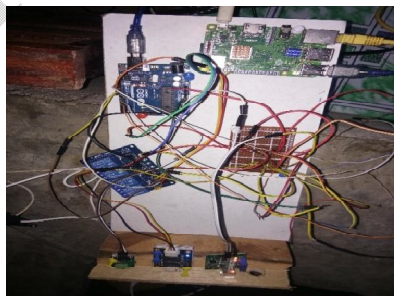


Figure 17 - Actual Schematic Diagram

The figure above shows the actual connection of every major component of the schematic diagram.

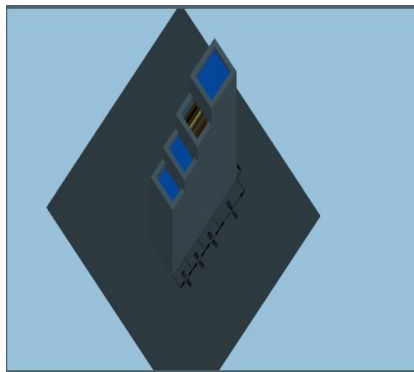


Figure 18 - Isometric View

The isometric view of the planned fish tank is depicted in the figure above. To lessen the need for water pumps, a gravitational force is applied by the tank's design. To return the water to the main tank, only one water pump has been used for the final tank, as opposed to the previous four.

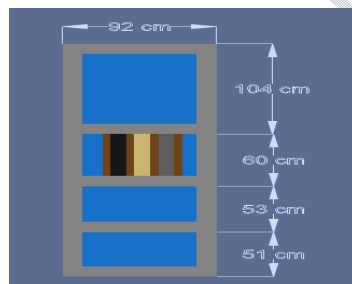


Figure 19 - Top View

The figure above shows the top view of the designed fish tank showing also the dimensions of every tank.

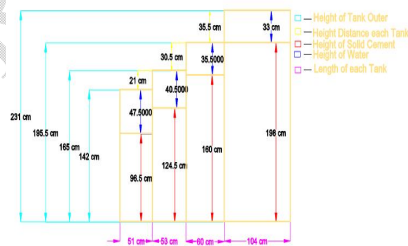


Figure 20 - Dimensions of the Tank

The figure above shows the dimensions of the fish tank in a right side view with the legend to fully understand each part of the dimensions.



Figure 21 - Actual Top View

The figure shows actual representative for the top view of the tank designed.



Figure 22 - Actual Isometric View

The figure above shows the actual representative for the isometric view of the designed tank.

3.3 Web-based Implementation for Smart Aquaponics System

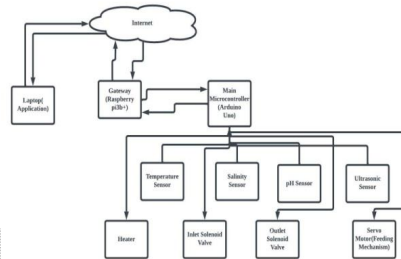


Figure 23 - Set - Up Diagram

The diagram above displays the structure of a smart aquaponics system. Owing to its precise signal timing and data extraction from sensors, the main microcontroller is an Arduino Uno. Our connection between the local hardware and the cloud database (Google Firebase), which is connected wirelessly via built-in Wi-Fi, is made through the Raspberry pi. The heater, servo motor, and inlet/outlet solenoid valve are some of our actuators. Our primary sensors are the DS18B20 temperature sensor, Total Dissolved Solids, pH 4502c (pH sensor), and ultrasonic sensor. Users can access the streamed data analytics through a tailored application.

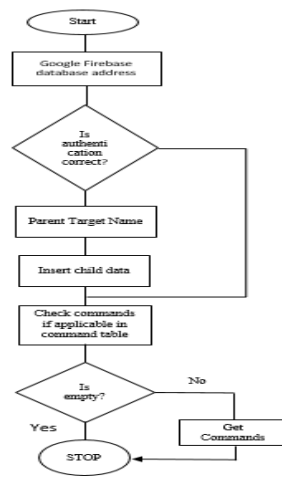


Figure 24 - Flowchart of the Web-based Design

The flowchart above illustrates the security protocol and model used while sending or receiving data to and from the cloud database (Google Firebase). To make sure that only authorized users may access data, the system utilizes authentication. The protocol begins at the Google Firebase. Firebase restricts access to a few registered users who require access to personal data for work-related reasons. The process proceeds on to the parent target name, which adds the child data, if the authentication is successful. If not, if the command is present in the command table, it immediately executes the check command. At that point, if empty, it comes to a stop.

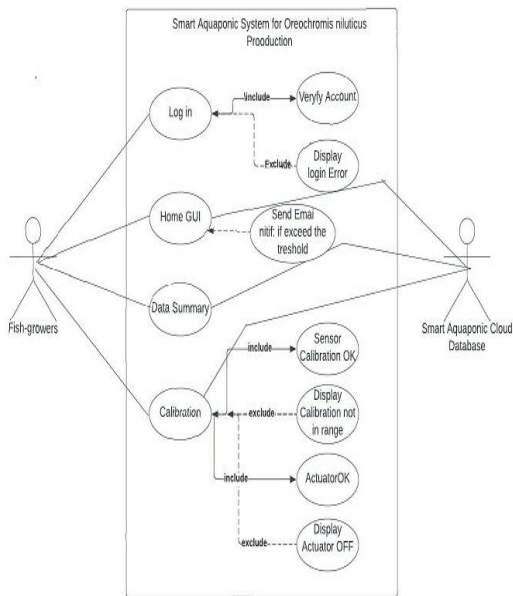


Figure 25 - Use Case Diagram

The figure above demonstrates an example of how a user could interact with a Smart Aquaponics System for the Application and Database of *Oreochromis niloticus* Production. The four pages of the program include its function. The user must first log in to the system by entering their account name and password in order for the system to confirm that they are permitted users. The user can quickly access the analytics of the real-time data streams of the water parameters using the Home GUI and if the parameters exceed to the normal range the system automatically send alert to the user's via email SMS, which is presented next. The user can quickly download and import the cloud-saved data from this page into MS Excel for further study. On the calibration, the user can also check to see if the sensors are still working.

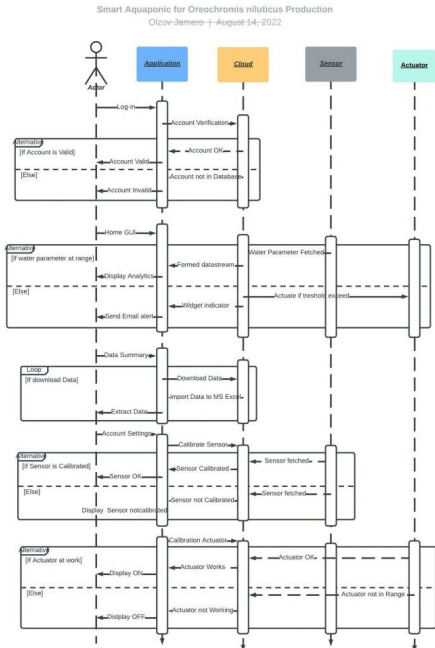


Figure 26 - Sequence Diagram

The interaction and cooperation between the user and the Smart Aquaponics System are depicted visually in the above sequence diagram. The diagram also shows what system or item is in use throughout each transaction. The system is composed of four objects, four functions, and its processes. The first is sign in, which only demonstrates how the application and the cloud work together with its (if else conditional). The second is the Home GUI, which merges four objects—an application, a cloud, sensors, and actuators—and displays real-time parameter data and also automatically sends alert to the owner if the parameters of the water exceeds from its normal range via email. The third-place finisher is the data summary transaction, which is used to directly import and download data from the cloud for additional research. Additionally, the application and the cloud are working together in this transaction. The settings transaction is used to display the active actuators and check whether the sensor is still operating within the calibrated range. It is the last transaction.

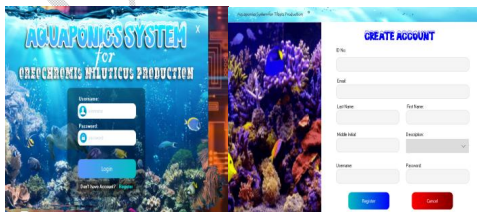


Figure 27 – Software Initial Page

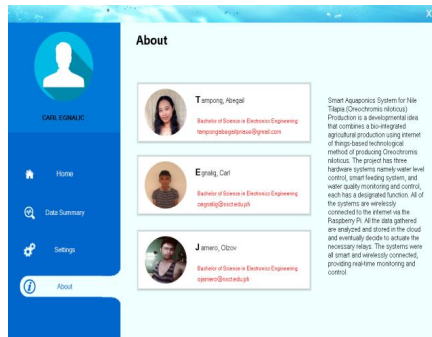


Figure 31 - Software about Section

The final figure depicts the application's owner, along with their names, titles, and email addresses for easy contact.

3.4 Quantitative and Qualitative System Evaluation

Qualitative

Table 5 - Hardware Requirement of the System

Component	Voltage (V)	Current (A)	Power (Watts)
Raspberry Pi	5.1V	2.5	12.75
Arduino Uno	5V	1	5
Temperature Sensor	5.5V	0.001	0.0055
TDS Sensor	5V	0.006	0.03
pH Sensor	5V	0.002	0.01
Ultrasonic Sensor	5V	0.005	0.025
Inlet Solenoid Valve	12V	2.80	30
Outlet Solenoid Valve	12V	3.33	39.96
Heater	220V	0.23	50.6
Aerator	220V	0.022	4.84
Servo Motor	5V	0.0010	0.005
Relay Board	5V	10	50
Total Power			193 watts

The table shows above is the overall power consumption of the system which only have 193 watts.

Quantitative

Table 6 - System Performance Acceptability Survey

Parameters	\bar{m}	SD	Qualitative Description
Reliability			
1. The sensors operate accurately during the testing period.	4.83	0.75011	Very Acceptable
2. The fish feeder operates properly	4.50	0.8367	Very

during the exact time scheduled.			Acceptable
3. The smart aquaponics app constantly monitored the water parameters.	5.0	0	Very Acceptable
Average	4.78	0.5289	Very Acceptable
Durability			
4. The system applies wiring proper installations.	4.83	0.7528	Very Acceptable
5. The circuit is protected in good casing.	4.50	0.7528	Very Acceptable
6. The system applies cooling system.	5.0	0.8944	Very Acceptable
Average	4.78	0.8	Very Acceptable
Effectiveness			
7. The smart aquaponics ensures the growth of the fish.	4.17	0.5164	Acceptable
8. The smart aquaponics app monitoring consistently ensures the water parameters for the fish growth.	3.17	0	Moderate Acceptable
9. The water circulation of the tank removes the contaminants from the water.	3.00	0.5916	Moderate Acceptable
Average	3.45	0.3693	Acceptable

The above tables were the evaluation results, which showed that this study received a rating of "very acceptable" in overall results from the evaluators.

IV. CONCLUSIONS AND RECOMMENDATIONS

Conclusions

Conclusions are drawn based on the results of the study. The study concludes that the smart aquaponics using recirculating aquaponics system technology were able to produce a significant growth of all the Tilapia inside the tank. All the parameters of fish growth were maintained such as pH level, salinity, total dissolved solids, temperature and water level of the tank.

It is also concluded that the Arduino microcontroller successfully maintained the operations of the system as designed while the raspberry pi microcontroller consistently gathered periodic data and displays real time results of the parameters being monitored.

The smart aquaponics application software can also be concluded to work well with the microcontroller operation and also give alert through email or SMS if the monitored parameters were exceeded to the normal level. The data extracted from the system were recorded efficiently for future analysis. The application is simple and conveniently to use by the users.

And lastly, it is concluded that the smart aquaponics system uses very minimal power for operation and also has a rating of very acceptable based on the quantitative overall results.

Recommendations

Moreover, the researchers made the following recommendations:

1. Add an x-ray camera so that the size of the fish may be determined automatically.
2. It is recommended to add dissolve oxygen since it is necessary.
3. Adding a camera module in order to provide live monitoring.

VI. REFERENCES

- [1] M. U. A. F. I. R. A. K. A. R. R. Haryanto, "Smart aquaponic system based Internet of Things (IoT)," *Journal of Physics: Conference Series*, vol. 1211, 2019.
- [2] "Towards Automated Aquaponics: A Review on Monitoring, IoT, and Smart Systems".
- [3] A. M. W. H. R. I. A. Mohanad Odema, "Smart Aquaponics System for Industrial Internet of Things (IIoT)," in *International Conference on Advanced Intelligent Systems and Informatics*, 2018.
- [4] S. F. N. M. Z. S. M. S. M. Y. A. F. R. Mohd Azlan Abu, "Design and Development of Home Security Systems based on Internet of Things Via Favoriot Platform," *International Journal of Applied Engineering Research*, vol. 13, no. 2, pp. 1253-1260, 2018.
- [5] S. M. A.-M. N. Mahfuz, "Smart Monitoring and Controlling System for Aquaculture of Bangladesh to Enhance Robust Operation," in *020 IEEE Region 10 Symposium (TENSYP)*, Bangladesh, 2020.
- [6] M. M. C. C. P. K. K. B. R. Teja, "Smart Monitoring System for Pond Management and Automation in Aquaculture," in *2020 International Conference on Communication and Signal Processing (ICCSP)*, India, 2020.
- [7] A. D. S. S. S. S. N. R. Kamiseti, "Smart electronic system for pond management in fresh water aquaculture," in *2012 IEEE Symposium on Industrial Electronics and Applications*, Bandung, Indonesia, 2012.
- [8] K. A. T. K. T. Imai, "Smart Aquaculture System: A Remote Feeding System with Smartphones," in *2019 IEEE 23rd International Symposium on Consumer Technologies (ISCT)*, Ancona, Italy, 2019.
- [9] M. K. Gondwe, *Smart Fish Pond Management System*, Livingstonia, Livingstonia: University of Livingstonia Faculty of Applied Sciences Department of Computer Engineering.
- [10] M. S. N. R. H. S. S. S. Sanjeev Kumarl, "Study and Design of Intelligent Automated Aquaponics System," *Journal of Engineering Sciences*.
- [11] M. S. M. P. V. Vinothini, "Remote Intelligent For Oxygen Prediction Content in PrawnCulture System," *International Journal of Scientific Research in Computer Science, Engineering and Information Technology (IJSRCSEIT)*.
- [12] M. K. N. Y. R. M. Rizzo Mungka Anak Rechie, "RFID Monitoring System and Management on Deer Husbandry," *IOP Conference Series: Earth and Environmental Science*, vol. 012072, p. 540, 2020.
- [13] D. M. G. Vaishnavi V. Daigavane, *Water Quality Monitoring System Based on IOT*, Sevagram.
- [14] N. Kedia, "Water Quality Monitoring for Rural Areas - A Sensor Cloud Based Economical Project," in *1st International Conference on Next Generation Computing Technologies*, Dehradun, India, 2015.
- [15] J. P. Jayti Bhatt, "IoT Based Water Quality Monitoring System," in *IRFIC*, 2016.
- [16] C. H. L. C. B. J. W. B. B. Y. Zhanwei Sun, "9th Annual IEEE Communications Society Conference on Sensor," in *Mesh and Ad Hoc Communications and Networks*, 2012.

- [17] A. H. K. W. C. R. A. R. A. M. M. S. A. M. A. S. M. A. A. Hadi Fikri, "Smart Vehicle Monitoring and Analysis System with IOT Technology," The International Journal of Integrated Engineering.
- [18] M. U. A. F. I. R. A. K. A. R. R. Haryanto, "Smart Aquaphonic System Based Internet of Things (IoT)," IOP Conference Series: Journal of Physics: Conference Series 1211, vol. 012047, 2019.
- [19] R. A. A. I. E. A. M. Taji Khaoula, "Architecture Design of Monitoring and Controlling of IoT-Based Aquaponics System Powered by Solar Energy," 2021.
- [20] R. Prabha, R. S. Saranish and A. S. R. V. K. S. S Sowndharya, "IoT Controlled Aquaponic System," in 2020 6th International Conference on Advanced Computing and Communication Systems (ICACCS), Coimbatore, India, 2020.

UNDER PEER REVIEW