

Case report

Enteric Duplication Cyst Presenting As Volvulus –Two Case Reports.

Abstract

Enteric duplication cysts are congenital malformation of the gastrointestinal tract. As the name duplication cyst suggest, which mimics that of the native gastrointestinal tract, having all the three layers of gastrointestinal tract. Enteric duplication cyst most frequently occurs in the small bowel, particularly the ileum, but can occur anywhere along the gastrointestinal tract from tongue to rectum. An incidence of 1 in 4500 births, with slight male preponderance. 80 % of the duplication cysts are symptomatic within first 2 years of life. Due to the varied clinics presentation, radiological evaluation is required for the diagnosis.

Comment [D1]: malformations

Comment [D2]: suggests

Comment [D3]: remove

Comment [D4]: of the gastrointestinal

Comment [D5]: with a slight

Herein, we are reporting two cases of enteric duplication cyst. First case of 25 years old male patient presented to our centre, with the features of acute intestinal obstruction due to volvulus. He was having a duplication cyst at the terminal ileum, causing volvulus. Treated by explorative laparotomy and second case of 7 years' boy, diagnosed on CT scan, as an enteric duplication cyst, was treated by laparoscopic surgery.

Comment [D6]: The first case of a 25-year-old

Comment [D7]: center

Comment [D8]: of a 7-year-old

Keywords

Duplication cyst, Enteric duplication cyst, Volvulus

Introduction

The first case of enteric duplication cyst was first reported by Calder in 1733. After that Ladd proposed or coin the term duplication cyst of the alimentary tract in 1930. Clinically there are two types of intestinal duplication cyst.

Comment [D9]: remove

Comment [D10]: Clinically,

1. Cystic duplication cyst is 80% of the cases, they are spherical in shape and not communicating with the bowel lumen and contains 20% gastric ectopic tissue in it.
2. Tubular duplication cyst accounts for 20% in of the cases and communicating directly with bowel lumen. [1,2,4,5]

Comment [D11]: cysts account

Comment [D12]: remove

Comment [D13]: communicate

Duplication cysts are attached to the normal alimentary tract and sharing three layers of bowel.

1. The cyst contains mucosa & submucosa.
2. The cyst is surrounded by smooth muscle layer
3. The cyst must have a common wall and common blood supply.

Enteric duplication cysts are more common in the ileal mesentery 44 %, mediastinum 18%, colon 13%, gastric 7%, duodenal 6%, rectum 4% and oesophagus 2%. Enteric duplication cysts may present with abdominal pain, palpable mass, vomiting, bleeding due to heterotopic mucosa and acute intestinal obstruction due to volvulus or intussusception. Ultrasonography showing the "gut signature signs" of a duplication cyst. The definitive treatment is open laparotomy or laparoscopic surgery with excellent results. [1,2,3,4]

Comment [D14]: which has

Case Reports

Case 1

A 25 years old male patient was admitted as emergency case on 25/09/2009 at our centre, with complains of severe abdomen pain, distension of abdomen, vomiting and constipation of 2 days. Physical examination of the patient, the abdomen was diffusely distended with exaggerated bowel sounds. All laboratory investigation was normal including kidney function tests. Plain abdominal x-ray revealed multiple air-fluids levels suggestive of small bowel obstruction.

Comment [D15]: complaints

Comment [D16]: for

Comment [D17]: investigations were normal,

After taking informed consent, patient underwent explorative laparotomy with provisional diagnosis of acute small bowel obstruction. Abdominal exploration revealed dilated small bowel loops with a cystic mass measuring about 10x10x8 cm in size and spherical in shape at terminal ileum, causing twisting and volvulus of small bowel. After untwisting of the cystic mass, there was no ischemia or gangrene of small bowel. Resection of the cystic mass along with ileal segment with end to end anastomosis was performed.

Comment [D18]: receiving

Comment [D19]: with a provisional

Comment [D20]: remove

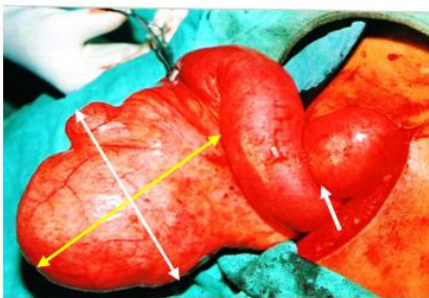
Comment [D21]: of the small

On gross examination of specimen, a big spherical cystic mass 10x10x8 cm of size. The histopathology showed a blind cystic mass lined by mucosal epithelium suggestive of intestinal duplication cyst. The patient was discharged from the hospital on 8th postoperative day with uneventful postoperative course. The patient was followed up after one year and he remained asymptomatic. (Case 1 Figure 1,2,3,4)

Comment [D22]: suggesting

Comment [D23]: an

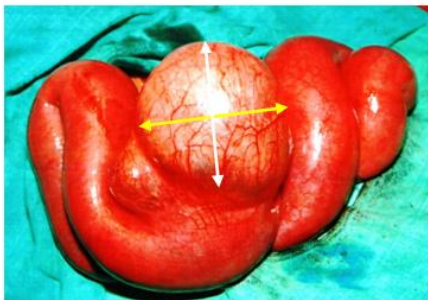
Comment [D24]: on the 8th



Case 1 Fig-1 Intraoperative photographs showing Volvulus of small bowel due to duplication cyst



Case 1 Fig-2 Intraoperative photographs showing untwisting of volvulus of small bowel



Case 1 Fig-3 Intraoperative photographs showing enteric duplication cyst of size 10x10x8 cm



Case 1 Fig-4 photographs showing total excision of enteric duplication cyst

Case 2

A 7 years' boy was admitted to our centre on 29/03/2017 with complains of abdominal pain and his CT abdomen showed the possibility of intestinal duplication cyst attached to the ileum. All laboratory investigation was normal including kidney function tests.

Under general anaesthesia abdomen painted and draped. A 5 mm umbilical incision taken and Pneumoperitoneum created by varies needle and 5 mm port was inserted. There was a cystic lesion 5x3 cm, arising in the ileum and confirms the diagnosis of a duplication cyst. Additional 3 mm portinserted at right upper side of the public symphysis and left lower abdomen Mc-Burning point and 3 mm trocar was placed in each incision. An intestinal clamp and dissecting forceps were placed. Pneumoperitoneum was established with the pressure of 10-12 mm of Hg. Laparoscopically we check the mobility of duplication cyst and it was freely mobile, no adhesions to the adjacent structure.

We decided to do TULA means trans-umbilical laparoscopic assistedextracorporeal small bowel resection along with the duplication cyst and ileo-ileal anastomosis. We extended the umbilical incision and self-retaining wound protector applied. We brought the cyst outside, in extracorporeal segmental resection of the cyst along with ileal segment were carried out. Stapler anastomosis done and haematosi confirmed. The intestine was relocated in the abdominal cavity and the umbilical incision was closed with suture and all ports were closed.

Post-operative recovery was excellent with hospital stay 5-6 days. On gross examination of ileal cyst of size 5x3 cm and attached the ileum. Histopathological diagnosis was intestinal duplication cyst. Post-operative follows up after 2 months, with no scar of the abdomen and boy was healthy. (Case 2 Figure 1,2,3,4,5)

Comment [D25]: abdomen was

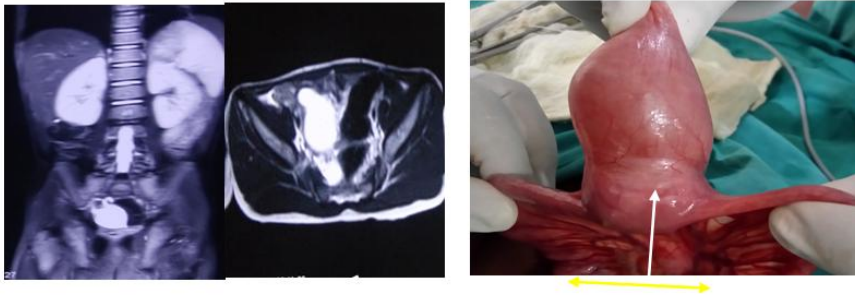
Comment [D26]: An additional

Comment [D27]: checked

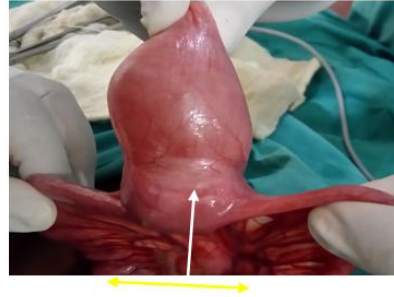
Comment [D28]: TULA, which

Comment [D29]: and applied a

Comment [D30]: sutures,



Case 2 Fig-1 CT Abdomen showing enteric duplication cyst in the abdomen



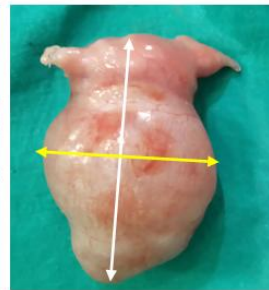
Case 2 Fig-2 Intraoperative photographs showing enteric duplication cyst of size 5x3 cm



Case 2 Fig-3 self-retaining wound protector Trans-umbilical laparoscopic assisted (TULA) Extracorporeal Excision



Case 2 Fig-4 Stapler ileal anastomosis



Case 2 Fig-5 Total excision of enteric duplication cyst of size 5x3 cm

Discussion

Duplication cyst of gastrointestinal tract is a rare congenital anomaly found in about 0.2% of all children. Enteric duplication cyst must have three essential characteristics are 1. A well-developed smooth muscle coat. 2 mucosal lining found within the cyst. 3 Continuity to any segment of alimentary tract. [2,3]

Although the exact aetiology is unknown, several theories have been proposed like split notochord theory, partial twinning theory, persistent embryological diverticula theory or aberrant luminal

Comment [D31]: A duplication

Comment [D32]: linings

Comment [D33]: in

Comment [D34]: of the

recanalization theory. In infants or neonates present with abdominal pain, vomiting, bleeding, abdominal mass intestinal obstruction due to volvulus or intussusception. Some duplication cysts may remain asymptomatic till adulthood. [1,2,3]

Ultrasonography is the imaging method of choice in the diagnosis of enteric duplication cysts. Classical findings, a presence of a cyst in relation of the two the gut with double wall or muscular rim sign i.e. "gut signatory sign", which is caused by inner hyperechoic mucosa and outer hypoechoic smooth muscle layer. Ultrasonography sensitivity is only 20-30% CT Scans are more useful in demonstrating the precise anatomical relationship between the cysts and surrounding structures. Ultrasonography and CT Scan are able to identify the cystic masses in the abdomen. Histopathological examination played an important role to confirm the diagnosis of duplication cyst. [2,4,5]

Comment [D35]: include the presence

Comment [D36]: by the

Comment [D37]: and the

Comment [D38]: in confirming

The definitive treatment for a duplication cyst is surgery. The surgical approach should be open laparotomy or laparoscopic surgery; it depends on the expertise of the surgeon. Emergency surgery is recommended in all the symptomatic cases. Laparotomy with excision of the cyst along with ileal segment and end to end anastomosis. [5,6,8]

Comment [D39]: remove

Comment [D40]: with the

Conclusion

Enteric duplication cysts are a rare congenital entity of gastrointestinal system. Resection of the cyst along with involved segment of the bowel offers definitive treatment.

Comment [D41]: of the

References

1. Sharma S, Yadav AK, Mandal AK, Zaheer S, Yadav DK, Samie A. Enteric Duplication Cysts in Children: A Clinicopathological Dilemma. *J ClinDiagn Res.* 2015 Aug;9(8):EC08-11. doi: 10.7860/JCDR/2015/12929.6381. Epub 2015 Aug 1. PMID: 26435952; PMCID: PMC4576543
2. Liu R, Adler DG. Duplication cysts: Diagnosis, management, and the role of endoscopic ultrasound. *Endosc Ultrasound.* 2014 Jul;3(3):152-60. doi: 10.4103/2303-9027.138783. PMID: 25184121; PMCID: PMC4145475.
3. Zhang, Z., Huang, X., Chen, Q. et al. Small intestine duplication cyst with recurrent hematochezia: a case report and literature review. *BMC Gastroenterol* 21, 246 (2021). <https://doi.org/10.1186/s12876-021-01627-6>
4. Sangüesa Nebot C, Llorens Salvador R, Carazo Palacios E, Picó Aliaga S, Ibañez Pradas V, Enteric duplication cysts in children: varied presentations, varied imaging findings. *Insights into imaging.* 2018 Dec; [PubMed PMID: 30311079]
5. Rangaswamy R, Nyuwi KT, Singh CG, Sangtam TA, Varte L. Enteric Duplication Cyst Leading to Volvulus: An Unusual Cause of Acute Intestinal Obstruction - A Case Report. *J ClinDiagn Res.* 2016 Dec;10(12):PD20-PD21. doi: 10.7860/JCDR/2016/22976.9091. Epub 2016 Dec 1. PMID: 28208934; PMCID: PMC5296507
6. Gupta A, Chakaravarthi K, Pattnaik B, Kaman L. Duplication cyst of ileum presenting as acute intestinal obstruction in an adult. *BMJ Case Rep.* 2016 Oct 6;2016:bcr2016214775. doi: 10.1136/bcr-2016-214775. PMID: 27758850; PMCID: PMC5073645.

7. Mirza B, Hashim I, Ahmad S, Talat N, Shaukat MZ, Saleem M. Duplication cyst with intestinal volvulus causing intestinal atresia/ stenosis in neonates. *J Neonatal Surg.* 2018; 7:43
8. Chen J, Wang J, Gu Z, Huang S, Zhu J, Wu B, Zhu Z, Cai P, Sun C. Laparoscopic resection of ileocaecal duplication in children (report of 15 cases). *J Minim Access Surg.* 2020 Oct-Dec;16(4):372-375. doi: 10.4103/jmas.JMAS_120_19. PMID: 31929221; PMCID: PMC7597877.
9. Patiño Mayer J, Bettolli M. Alimentary tract duplications in newborns and children: Diagnostic aspects and the role of laparoscopic treatment. *World J Gastroenterol.* 2014;20:14263–71. [PMC free article] [PubMed] [Google Scholar]
10. Lima M, Molinaro F, Ruggeri G, Gargano T, Randi B. Role of mini-invasive surgery in the treatment of enteric duplications in paediatric age: A survey of 15 years. *Pediatr Med Chir.* 2012;34:217–22. [PubMed] [Google Scholar]

UNDER PEER REVIEW