

## **Original Research Article**

# ***Piriformospora indica* improves tomato's drought tolerance through enhanced nutrient uptake and enzymatic antioxidant response**

### **Abstract**

*Piriformospora indica*, a type of endophytic basidiomycete, has demonstrated the ability to enhance plant growth and increase tolerance to stressful conditions, particularly drought and salinity. This study aimed to examine the effectiveness of *Piriformospora indica* in mitigating the negative effects of drought stress on tomato plants. In a greenhouse pot experiment, tomato plants (inoculated with *Piriformospora indica*-P1 and non-inoculated-P2) were subjected to different water regimes, including well-watered conditions and varying levels of drought stress (D1-Control, D2-75% Field Capacity (FC), D3-50% FC and D4-25% FC). The study evaluated multiple parameters such as, yield per plant, anti-oxidant activities and nutrient uptake as influenced by *P. indica* colonization and drought stress. The results revealed that as the drought stress increased, micro and macro nutrient uptake got reduced, leading to a reduction in yield as well. But this reduction was found to be less in P1 compared to P2 indicating the positive effect of colonization on nutrient uptake and yield per plant. Drought stress increased the accumulation of anti-oxidants in tomato plants, which is a method of drought tolerance mechanism. However, *P. indica* colonization (P1) resulted insignificantly higher anti-oxidant activities compared to non-colonized plants (P2) corresponding to same level of drought stress indicating its role in improving antioxidant activity and stress tolerance in tomato plants.

*Keywords; Piriformospora indica, Tomato, Drought, Nutrient uptake*

### **1. Introduction**

Drought stress is a complex phenomenon that triggers various morphophysiological, biochemical, and molecular alterations in plants, ultimately impeding their growth and development (Chaves *et al.*, 2011). At the cellular level, this stress disrupts crucial processes, such as water homeostasis, metabolic functions, and hormonal balance. Moreover, it adversely affects chlorophyll synthesis, root differentiation, foliage growth, stomatal regulation, as well as water and mineral uptake, resulting in reduced plant yield and water use efficiency (Kaur *et al.*, 2021). Additionally, drought induces the production of reactive

**Comment [C1]:** Spelling mistake

oxygen species (ROS), leading to oxidative damage and disturbance in cellular redox regulation (Impa *et al.*, 2012).

Plants have developed strategies to cope with water scarcity, aiming to increase water absorption from the soil and minimize water loss through transpiration (Takahashi *et al.*, 2020). Morphological adaptations, such as larger root size for enhanced soil exploration and increased surface absorption, can occur (Hund *et al.*, 2009). In response to drought, stomatal closure reduces transpiration but also hampers CO<sub>2</sub> diffusion and photosynthetic carbon assimilation (Shahzad *et al.*, 2016). Proline production, as a compatible organic solute, plays a crucial role in osmotic adjustment, ROS detoxification, and stabilization of cellular structures (Takahashi *et al.*, 2020). Additionally, plants activate antioxidant defense systems to counteract oxidative stress under drought, employing enzymes like catalase, ascorbate peroxidase, and dehydro-ascorbate reductase to scavenge reactive oxygen species and regenerate ascorbate (Laxa *et al.*, 2019).

Tomato (*Solanum lycopersicum* L.) is a globally significant horticultural crop. However, its susceptibility to water deficit has led to extensive efforts in developing drought-resistant tomato varieties. The plant microbiome plays a crucial role in enhancing plant growth and stress tolerance, with potential applications in crop production (Ray *et al.*, 2020).

Beneficial interactions between plants and soil microorganisms, such as endophytic fungi, can mitigate the harmful impacts of environmental stresses and enhance plants' ability to withstand adverse conditions (Aghili *et al.*, 2014). *Piriformospora indica*, an endophytic basidiomycete, has the capacity to colonize the roots of various plant species and has been reported to enhance plant tolerance to challenging conditions, including salinity stress (Gill *et al.*, 2016). Studies have demonstrated that inoculating plants with *P. indica* can enhance nutrient absorption, modify plant metabolites, and promote plant growth (Vahabi *et al.*, 2013). Various studies have indicated that mycorrhizal fungi play a role in modulating the expression of aquaporins, which are involved in water transport, under drought (Bárcana *et al.*, 2014) and salinity (Chen *et al.*, 2017) stress. According to a study by Abdelaziz *et al.* (2017), *Arabidopsis* seedlings that were inoculated with *P. indica* demonstrated a noteworthy reduction in Na<sup>+</sup> uptake and an increase in K<sup>+</sup> concentration compared to non-inoculated plants. Drought and salinity stress share common characteristics in terms of their impact on plants. Both conditions trigger osmotic stress and oxidative damage at an early stage, resulting in reduced growth, stomatal closure, and nutrient deficiencies (Ma *et al.*, 2020). Hence, plants may employ similar mechanisms to adapt to both drought and salinity stresses. These mechanisms include growth inhibition, accumulation of compatible solutes like proline, heightened levels of antioxidants and protective proteins, suppression of energy-intensive pathways, and regulation of gene expression (Munns, 2011).

Therefore, the primary aim of this study was to assess the effectiveness of *P. indica* in enhancing the growth and drought tolerance of tomato plants. To achieve this goal, various physiological and

biochemical parameters such as chlorophyll content, nutrient uptake, proline levels, antioxidant enzyme activities, and antioxidant capacity were examined in the tomato plants.

## 2. Material and methods

### 2.1 Maintenance of the fungal root endophyte *P. indica*

The *P. indica* strain obtained from the Department of Plant Pathology, College of Agriculture, Vellayani, was maintained on potato dextrose agar (PDA) medium. The fungus was regularly propagated by transferring a fungal disc from the actively growing edge of a two-week-old *P. indica* culture onto Petri plates containing PDA or conical flasks containing potato dextrose broth (PDB). The cultures were then incubated in the dark at room temperature. Subculturing was performed every fifteen days to maintain the fungus.

**Comment [C2]:** Mention state and country

### 2.2 Co-cultivation of *P. indica* with tomato var. Vellayani Vijay in potting mixture

*P. indica* was cultured in sterilized potting mixture by following the method developed by Joyet *et al.* (2020). The potting mixtures containing *P. indica* and those without it were transferred to separate trays after being sterilized. The seeds of tomato variety Vellayani Vijay were also sterilized with a 0.1% solution of mercuric chloride for 10 seconds and then washed twice with sterile water. These seeds were then planted firmly in the trays and kept in a dark room for 2 days to promote the strength and vitality of the growing seedlings. In the following days, the trays with the seedlings were kept under controlled conditions of temperature and humidity to ensure consistent germination and growth. They became ready for transplantation after 25 days.

**Comment [C3]:** Citation not found in the reference section

To investigate the impact of *P. indica* inoculation on tomato plants under drought stress, a bioassay with two factors was conducted: *P. indica* inoculation (inoculated or uninoculated plants) and Drought induced by limiting irrigation (D1-Control (100% Field Capacity (FC), D2-75% FC, D3-50% FC, D4-25% FC). 45 seedlings (inoculated and non-inoculated) were individually transplanted into plastic pots filled with 4.5 kg soil. Root colonization by *P. indica* was confirmed by observing root bits under microscope (Leica - ICC50 HD, USA) before transplanting and 15 days after transplanting.

### 2.3 Gravimetric Method for Simulating Drought Stress

In the gravimetric method for simulating drought stress, each pot was filled with 4500 g of soil, while an additional 4500 g of soil was dried in an oven for 7 days to obtain the "dry weight" (WD). During the initial two weeks after transplanting, all plants were subjected to a well-watered condition for acclimatization. Following this period, four watering treatments were implemented for duration of two weeks: D1-Control (100% FC), D2-75% FC, D3-50% FC, D4-25% FC. In the well-watered regime, plants were irrigated with water equivalent to 100% of the soil's water holding capacity. In the drought stress treatment, plants were irrigated with water equivalent to only 75% FC, 50% FC, 25% FC of the soil's water

**Comment [C4]:** Gravimetric method by whom should be mention

holding capacity. The pots with tomato plants were weighed daily and watered to reach 100%, 75%, 50%, 25% of field capacity. To determine the soil water holding capacity or field capacity, an extra pot filled with 4500 g of soil was saturated with water, drained until reaching a constant weight, and recorded as the "wet weight" (WW). The pots' weights were measured daily to maintain the relative soil water content (RSWC), with water replenished if any pot weight fell below the target weight (10 g threshold). Additionally, the total plant fresh weight (WP) was estimated by measuring shoot and root weights of two extra pots (Figure 1). The target weight (WT) for each treatment (pot) was calculated by using equation.

$$WT = WD \times WP \times RSWC \times (WW - WD)$$

(WD - Oven dry weight of soil, WP - total plant fresh weight, RSWC - Relative soil water content, WW - Wet weight (weight of water saturated soil + pot))

## 2.4 Assessment of yield per plant

Biomass production (yield per plant), were taken and used to compare the differences between the yield from colonized by *P. indica* and non-colonized seedling under different and drought conditions control.

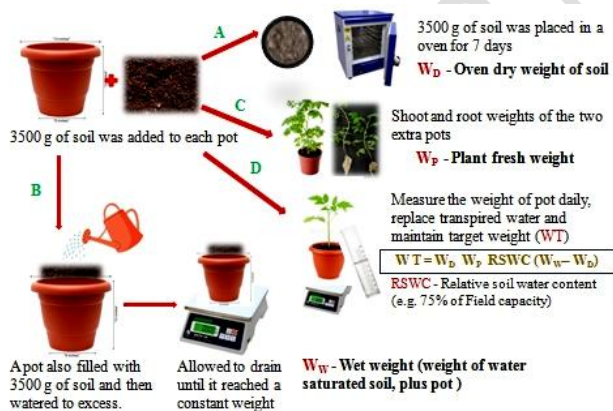


Figure 1. Gravimetric method for creating drought stress

The activities of antioxidant enzymes, including peroxidase (PO), catalase, and superoxide dismutase (SOD), were also assessed in tomato plants grown under different drought conditions. The activity of peroxidase was determined using a protocol described by Srivastava (1987), while catalase activity was measured following the procedure outlined by Luck (1974). The quantification of superoxide dismutase (SOD) activity was carried out using the method described by Kakker *et al.* (1984).

## **2.5 Nutrient uptake**

The plant samples were subjected to mineral element analysis, and the concentrations of various elements including nitrogen (N), phosphorus (P), potassium (K), calcium (Ca), iron (Fe), manganese (Mn), Copper (Cu), sulfur (S), and zinc (Zn) were determined. The analysis was performed in three replicates to ensure accuracy and reliability of the results. The plant samples were first ground into a fine powder and prepared for nutrient analysis. To determine the nutrient contents, the samples were digested using a di-acid mixture of  $\text{HNO}_3:\text{HClO}_4$  (10:4). The digested samples were then analyzed for the concentrations of Zn, Fe, Mn, Cu, using an ICP-MS. Phosphorus, potassium, calcium and sulfur were measured using specific methods. Phosphorus was determined using the vanadomolybdo phosphoric yellow color method. Potassium and calcium levels were analyzed using a flame photometer following the procedure described by Jackson (1973). Sulfur content was measured using the turbidimetric method developed by Chesnin and Yien (1951). The nitrogen content in the plant samples was determined using the Kjeldahl method as outlined by Jackson (1973). To calculate the nutrient uptake by the tomato crop, the nutrient content values were multiplied by the corresponding yield.

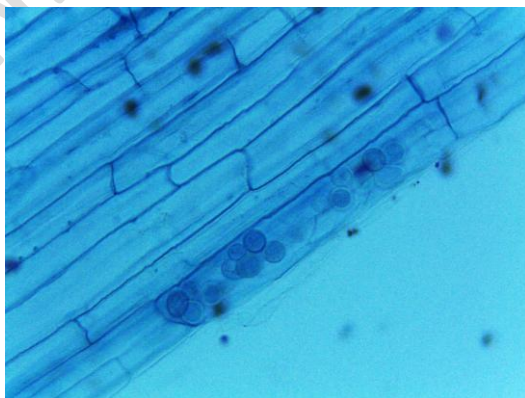
## **2.6 Statistical analysis**

The experiment followed a factorial design within a completely randomized framework. It was replicated four times, and each calculated mean was based on four independent replicates. Statistical analysis was conducted using KAU-GRAPES online and mean comparisons were performed using a least significant difference (LSD) test with a significance level of  $P < 0.05$ .

## **3 Result and Discussion**

### **3.1 Detection of *P.indica* in inoculated plant root**

Root colonization by *P.indica* was confirmed by observing root bits under microscope (Leica - ICC50 HD, USA) before transplanting as well as 15 days after transplanting (Fig.2)



**Figure 2.** Root colonization of *P. indica* in tomato @15 days after co-cultivation

### **3.2 Yield per plant**

Colonizing tomato plants with *P. indica* (P1) led to a significantly higher yield per plant compared to non-colonized tomato plants (P2) which had a lower yield. Among the drought stress treatments, the control group (D1) with regular irrigation had the highest yield (565.2g). As the level of drought stress increased (D2, D3, D4), the yield decreased (493.1g, 254.0g, 129.6g, respectively). When comparing the treatment combinations, the group with *P. indica* colonization and regular irrigation (P1 D1) had the highest yield (582.1g), while the group without *P. indica* colonization and subjected to the most severe drought stress (P2 D4) had the lowest yield (69.68g). The results suggest that *P. indica* colonization positively influences tomato plant growth and yield, and drought stress negatively affects plant productivity, with the severity of impact increasing with the reduction in irrigation levels (Fig.3)

Colonizing tomato plants with *P. indica* resulted in higher yields compared to non-colonized plants. The control group with regular irrigation had the highest yield, while increased drought stress levels led to decreased yields. The combination of *P. indica* colonization with regular irrigation had the highest yield, while the combination without *P. indica* colonization and severe drought stress had the lowest yield. These results indicate that *P. indica* positively influences tomato plant growth and yield, while drought stress has a negative impact on plant productivity, with greater severity of impact as irrigation levels decrease (Fig.3). The increased yield by the inoculation with *P. indica* was also reported in rice (Tsai *et al.*, 2020), maize (Zhang *et al.*, 2018), and in millets (Ahmadvand *et al.*, 2018) under water stress.

### **3.3 Effect of *P. indica* on anti-oxidant activity**

The superoxide dismutase (SOD) activity in tomato plants was evaluated under different treatments, including *P. indica* colonization and varying levels of drought stress. In D1 (control conditions), the SOD activity was 218.23mg g<sup>-1</sup> fw for P1 and 210.64 mg g<sup>-1</sup> fw for P2. As the severity of drought stress increased, the SOD activity also increased. In D2 (75% field capacity), the SOD activity was 247.33mg g<sup>-1</sup> fw for P1 and 233.61 mg g<sup>-1</sup> fw for P2. Further elevation in SOD activity was observed in D3 (50% field capacity) with values of 279.32mg g<sup>-1</sup> fw for P1 and 244.37mg g<sup>-1</sup> fw for P2. The highest SOD activity was recorded in D4 (25% field capacity) with values of 295.38mg g<sup>-1</sup> fw for P1 and 245.97mg g<sup>-1</sup> fw for P2, indicating a substantial impact of severe drought stress on the activation of SOD in both *P. indica*-colonized and non-colonized tomato plants. From the table it is clear that the combination of P1 with different levels of drought had a higher SOD activity than the corresponding combinations with P2 indicating the role of *P. indica* on enhancing the SOD activity (Table 1).

**Table 1.** Influence of *P. indica* on anti-oxidant activities in tomato var. Vellayani Vijai under drought condition

Treatments	SOD (mg g <sup>-1</sup> fw)	PO (min <sup>-1</sup> g <sup>-1</sup> fw)	CAT (units min <sup>-1</sup> g <sup>-1</sup> fw)
P1 D1	218.23±2.4	24.73±0.85	252.44±6.1
P1 D2	247.33±4.3	28.50±1.4	268.53±7.6
P1 D3	279.32±3.5	33.12±3.7	322.23±7.5
P1 D4	295.38±4.5	37.23±0.46	468.67±7.7
P2 D1	±210.642.1	23.75±1.7	181.59±5.9
P2 D2	233.61±5.7	26.61±1.1	200.46±3.8
P2 D3	244.37±5.8	29.69±1.0	252.89±3.7
P2 D4	245.97±5.9	30.35±0.87	288.91±5.9
C.D	9.59	2.97	14.99
mSEm(±)	3.17	0.98	4.96

(P1 - *P. indica*-colonized tomato; P2 - Non-colonized tomato; D1-Control; D2-75% FC; D3-50% FC; D4-25% FC)

The combination effect of *P. indica* colonization and drought stress on peroxidase activity (PO) in tomato plants are represented above.(Table 1).Based on the results, it can be observed that the PO values vary across the treatment combinations. The values of P1 D2, P1 D3, and P1 D4 ( 24.73, 28.50, 33.12 and 37.23min<sup>-1</sup> g<sup>-1</sup>fw respectively) are generally higher than the corresponding values of P2 D2, P2 D3, and P2 D4 (23.75, 26.61, 29.69 and 30.35min<sup>-1</sup> g<sup>-1</sup>fw respectively), suggesting that *P. indica* colonization may have a positive effect on peroxidase activity under drought stress conditions.Furthermore, the PO values increase gradually as the drought stress levels intensify within each *P. indica* colonization treatment (whether it is P1 or P2). This indicates that higher levels of drought stress may lead to an increase in peroxidase activity, and the presence of *P. indica* colonization might further enhance this response.

The results showed significant variations in CAT activity across different treatments (Table 1). For P1 under different levels of drought stress, the CAT activity was significantly higher compared to P2, indicating the positive effect of *P. indica* colonization on CAT activity. Under control conditions (D1), P1 exhibited a CAT activity of 252.44 units min<sup>-1</sup> g<sup>-1</sup>fw, whereas P2 had a lower CAT activity of 181.59units min<sup>-1</sup> g<sup>-1</sup>fw. In both P1 and P2, the CAT activity increased with increasing severity of drought stress. As the drought level increased to D4, the CAT activity increased significantly in both P1 and P2. In P1, the CAT activity increased from 252.44 units min<sup>-1</sup> g<sup>-1</sup>fw in D1 to 468.67 units min<sup>-1</sup> g<sup>-1</sup>fw in D4. Similarly, in P2, the CAT activity increased from 181.59units min<sup>-1</sup> g<sup>-1</sup>fw in D1 to 288.91 units min<sup>-1</sup> g<sup>-1</sup>fw in D3. The results showed significant variations in CAT activity among the treatment combinations.

In the present study, the anti-oxidant enzymes such as, SOD, PO and CAT showed a significantly higher activity in *P. indica* colonized plants compared to the non-colonized plants. As the stress level reaches 25%FC (D4), SOD was increased by 20%, PO by 22% and CAT activity by 62% in colonized plants as compared to the control plants (non-colonized).

*P. indica* colonization in plants has been linked to enhanced levels of various antioxidant enzymes, including catalase, ascorbate peroxidase, dehydroascorbate reductase, monodehydroascorbate reductase, and glutathione reductase, providing protection against salt stress (Baltruschat *et al.*, 2008). In maize plants, *P. indica* colonization was found to protect against the root pathogen *F. verticilloides* by increasing the activity of antioxidant enzymes, such as catalase, glutathione reductase, glutathione S-transferase, and superoxide dismutase. Colonized plants exhibited 23-fold, 3.8-fold, and 1.7-fold increases in the activity of CAT, GST, and SOD, respectively, compared to uncolonized diseased plants (Kumar *et al.*, 2009). Chinese cabbage plants colonized by *P. indica* showed an improvement in photosynthetic efficiency under drought stress, attributed to the prevention of chlorophyll and thylakoid protein degradation. This effect was accompanied by increased activities of peroxidase, catalase, and superoxide dismutase (Sun *et al.*, 2010). *P. indica* induced systemic resistance against rice sheath blight by reducing hydrogen peroxide levels and increasing the activity of superoxide dismutase (Nassimi *et al.*, 2017). In Medicago truncatula plants subjected to salt stress, *P. indica* priming led to a 44% increase in peroxidase activity and a 38% increase in catalase activity (Li *et al.*, 2017). *P. indica* priming in cowpea plants resulted in increased activity of defense enzymes, such as peroxidase and polyphenol oxidase, providing protection against Black eye cowpea mosaic virus (Alex, 2017). Additionally, in rice seedlings exposed to water stress, the activity of catalase was upregulated upon inoculation with *P. indica* (Tsai *et al.*, 2020).

**Comment [C5]:** Citation Not found in the reference section

Table 2 The effect of *P. indica* and drought on macro nutrient concentration (g/Kg DW) in leaves of tomato var. VellayaniVijai

Treatments	Nitrogen	Phosphorus	Potassium	Calcium	Magnesium	Sulfur
P1 D1	3.73	0.29 <sup>A</sup>	3.64 <sup>A</sup>	2.74 <sup>A</sup>	0.83 <sup>A</sup>	0.59 <sup>A</sup>
P1 D2	3.67	0.27 <sup>B</sup>	3.63 <sup>A</sup>	2.73 <sup>A</sup>	0.81 <sup>A</sup>	0.55 <sup>B</sup>
P1 D3	3.63	0.27 <sup>B</sup>	3.48 <sup>B</sup>	2.64 <sup>A</sup>	0.76 <sup>B</sup>	0.46 <sup>C</sup>
P1 D4	3.6	0.24 <sup>C</sup>	3.3 <sup>C</sup>	2.51 <sup>B</sup>	0.62 <sup>C</sup>	0.4 <sup>C</sup>
P2 D1	3.22	0.24 <sup>C</sup>	3.33 <sup>C</sup>	2.59 <sup>BC</sup>	0.78 <sup>C</sup>	0.49 <sup>D</sup>
P2 D2	3.21	0.24 <sup>D</sup>	3.28 <sup>CD</sup>	2.54 <sup>CD</sup>	0.75 <sup>D</sup>	0.49 <sup>D</sup>
P2 D3	3.15	0.22 <sup>E</sup>	3.18 <sup>D</sup>	2.46 <sup>D</sup>	0.72 <sup>D</sup>	0.47 <sup>E</sup>
P2 D4	3.08	0.21 <sup>F</sup>	3.17 <sup>D</sup>	2.28 <sup>E</sup>	0.72 <sup>E</sup>	0.39 <sup>E</sup>
C.D	N/A	0.009	0.112	0.088	0.023	0.017
SEM(±)	0.027	0.003	0.037	0.029	0.008	0.006

(P1 - *P. indica*-colonized tomato; P2 - Non-colonized tomato; D1-Control; D2-75% FC; D3-50% FC; D4-25% FC)

Table 3 The effect of *P. indica* and drought on micro nutrient concentration (g/Kg DW) in leaves of tomato var. VellayaniVijai

Treatments	Iron	Manganese	Zinc	Copper
P1 D1	387	361 <sup>A</sup>	62 <sup>A</sup>	21.4 <sup>A</sup>
P1 D2	370	220 <sup>B</sup>	59.9 <sup>AB</sup>	19.7 <sup>B</sup>
P1 D3	357	163 <sup>C</sup>	59.1 <sup>B</sup>	19.2 <sup>C</sup>
P1 D4	340	137 <sup>C</sup>	47.8 <sup>C</sup>	17.2 <sup>C</sup>
P2 D1	370	223 <sup>C</sup>	56.4 <sup>CD</sup>	20.6 <sup>C</sup>
P2 D2	366	232 <sup>D</sup>	55.3 <sup>CD</sup>	19.5 <sup>D</sup>
P2 D3	358	217 <sup>E</sup>	55.2 <sup>D</sup>	18.4 <sup>D</sup>
P2 D4	352	204 <sup>F</sup>	53.9 <sup>E</sup>	18.2 <sup>E</sup>
C.D	N/A	8.481	2.489	0.686
SEM(±)	5.291	2.805	0.823	0.227

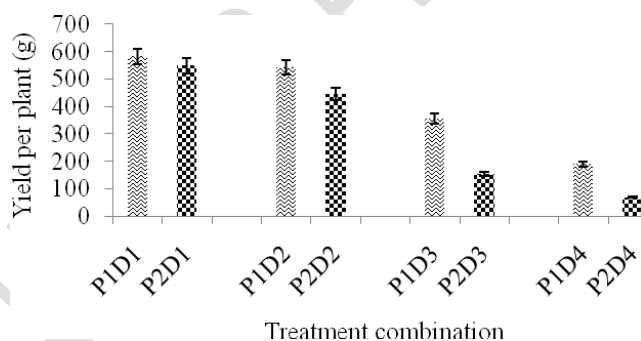
(P1 - *P. indica*-colonized tomato; P2 - Non-colonized tomato; D1-Control; D2-75% FC; D3-50% FC; D4-25% FC)

### 3.4 Effect of *P.indica* on nutrient uptake

The impact of different levels of drought stress on nutrient concentration in both *P. indica*-colonized and non-colonized plants was examined. It was observed that the imposing drought stress led to a decrease in nutrient concentration in leaves of the plants. However, the reduction in macro nutrient concentration was found to be higher in non-colonized plants compared to *P. indica*-colonized ones (Table 2 and 3). The interaction between *P. indica* and drought treatment had a significant effect on the content of P, K, Ca, Mg, S, Mn, Zn and Cu (Table 2 and 3). Among Macronutrients (P, K, Ca) the treatment combination of *P. indica* with 25% FC was statistically similar to P2D1 treatment. The highest concentration values observed in P1D1 treatment for various elements P, K, Ca, Mg, and S. The highest concentration observed for, for P it is 0.29 g/Kg, for K it is 3.64 g/Kg, for Ca it is 2.74 g/Kg, for Mg it is 0.83 g/Kg, and for S it is 0.59 g/Kg. Under the P1D1 treatment, there is an observed increase in the concentration of P, K, and Ca in tomato plants compared to the P2D1 treatment. The increase in concentration is reported to be 20.8% for Phosphorus, 9.3% for Potassium, and 5.8% for Calcium. Significantly higher concentrations of the micronutrients Manganese, Zinc, and Copper were observed in the P1D1 treatment compared to other treatments. Specifically, the concentration of Manganese was found to be 361 g/kg, Zinc was 62 g/kg, and Copper was 21.4 g/kg in the P1D1 treatment. Under drought stress conditions, the concentration of P, K, Ca, Mg, S, Mn, Zn and Cu significantly increased in plants that were colonized with *P. indica* compared to non-colonized plants. *P. indic*a colonization had a significant effect on the P and Ca concentration, resulting in an increase in inoculated plants regardless of the water stress. On the other hand, the total N and Mn content were not significantly affected by any of the factors or their interaction (Table 2 and 3).

The positive effects of fungal symbiosis on enhancing plant tolerance to drought stress are closely associated with improved nutrient absorption, which aligns with the findings of our study. Our results demonstrate that exposure to D4-25% FC treatment led to a reduction in the absorption of P, K, Ca, Mg, S, Mn, Zn and Cu content in the leaves of tomato plants compared to the control plants. However, when *P. indica* was inoculated, the absorption of N, P, and Ca decreased in comparison to non-inoculated plants under same treatment, although there was no significant difference in N and Mn content among the different inoculation treatments. Previous studies have also reported increased nutrient concentration facilitated by *P. indica* (Saddique *et al.*, 2018; Su *et al.*, 2017; Ghabooli, 2014). P plays a crucial role in supporting plant growth and development, especially under unfavorable conditions. Adequate levels of P have been found to enhance salinity tolerance by promoting root growth into deeper soil regions and supplying an adequate supply of inorganic P for carbon assimilation (Tariq *et al.*, 2017). Previous research conducted by Shahollari *et al.* (2005) in *Arabidopsis* has shown that *P. indica* can enhance phosphorus absorption. Furthermore, *P. indica* inoculation has been reported to increase the accumulation of nitrogen (N) and calcium (Ca), which can mitigate the toxicity caused by salinity by regulating sodium (Na<sup>+</sup>) uptake and maintaining optimal chlorophyll levels, thus promoting plant growth under saline conditions (Chandrasekaran *et al.*, 2014). Research suggests that symbiotic fungi, such as *P. indica*, can enhance nutrient absorption in plant roots through changes in root architecture and increased root length facilitated by extra-radical hyphae. Notably, *P. indica* did not affect N uptake, and considering that N ions have lower toxicity compared to other ions (Fortmeier and Schubert, 1995), it can be inferred that the positive effects of *P. indica* on tomato growth are associated with an increased uptake of nitrogen (N), phosphorus (P), potassium (K), and calcium (Ca), or a reduced absorption of Na.

**Comment [C6]:** Please write years in chronological order



**Figure 3.** Yield per plant as affected by colonization with *P. indica* and drought stress

#### 4. Conclusions

The colonization of tomato plants with *P. indica* increased plant yield and antioxidant activity while enhancing nutrient uptake, particularly under drought stress conditions. Drought stress negatively impacted plant productivity, with severe stress leading to decreased yields. However, *P. indica* colonization mitigated the effects of drought by improving antioxidant enzyme activity, such as SOD, PO, and CAT, and promoting nutrient absorption, including macro and micro nutrients. These findings suggest that *P. indica* colonization holds potential for enhancing crop growth, stress tolerance, and productivity, providing a promising avenue for sustainable agricultural practices in water-limited environments.

## References

Tsai, H. J., Shao, K. H., Chan, M. T., Cheng, C. P., Yeh, K. W., Oelmüller, R., & Wang, S. J. (2020). *Piriformospora indica* symbiosis improves water stress tolerance of rice through regulating stomata behavior and ROS scavenging systems. *Plant signaling & behavior*, 15(2), 1722447.

Zhang, W., Wang, J., Xu, L., Wang, A., Huang, L., Du, H., Qiu, L., & Oelmüller, R. (2018). Drought stress responses in maize are diminished by *Piriformospora indica*. *Plant signaling & behavior*, 13(1), e1414121.

Ahmadvand, G., & Hajinia, S. (2018). Effect of endophytic fungus *Piriformospora indica* on yield and some physiological traits of millet (*Panicum miliaceum*) under water stress. *Crop and Pasture Science*, 69, 594 - 605.

Chaves, M. M., Costa, J. M., & Saibo, N. J. M. (2011). Recent advances in photosynthesis under drought and salinity. *Advances in botanical research*, 57, 49-104.

Kaur, H., Kohli, S. K., Khanna, K., & Bhardwaj, R. (2021). Scrutinizing the impact of water deficit in plants: Transcriptional regulation, signaling, photosynthetic efficacy, and management. *Physiologia Plantarum*, 172(2), 935-962.

Impa, S. M., Nadaradjan, S., & Jagadish, S. V. K. (2012). Drought stress induced reactive oxygen species and anti-oxidants in plants. *Abiotic stress responses in plants: metabolism, productivity and sustainability*, 131-147.

Takahashi, F., Kuromori, T., Urano, K., Yamaguchi-Shinozaki, K., & Shinozaki, K. (2020). Drought stress responses and resistance in plants: From cellular responses to long-distance intercellular communication. *Frontiers in plant science*, 11, 1407.

Hund, A., Ruta, N., & Liedgens, M. (2009). Rooting depth and water use efficiency of tropical maize inbred lines, differing in drought tolerance. *Plant and Soil*, 318, 311-325.

**Comment [C7]:** Make the references in an alphabetical order

**Comment [C8]:** Spelling mistake

**Comment [C9]:** *signaling & behavior* should start with capital letters

**Comment [C10]:** *signaling & behavior* should start with capital letters

**Comment [C11]:** Botanical research should start with capital letters

**Comment [C12]:** *Abiotic stress responses in plants: metabolism, productivity and sustainability* should start with capital letter

**Comment [C13]:** Plant and science should start with capital letter

Shahzad, M.A., Jan, S.U., Afzal, F., Khalid, M., Gul, A., Sharma, I., Sofo, A. and Ahmad, P., (2016). Drought stress and morphophysiological responses in plants. *Water stress and crop plants: A sustainable approach*, 2, pp.452-467.

**Comment [C14]:** *stress and crop plants, sustainable approach* should start with capital letters

Laxa, M., Liebthal, M., Telman, W., Chibani, K., & Dietz, K. J. (2019). The role of the plant antioxidant system in drought tolerance. *Antioxidants*, 8(4), 94.

**Comment [C15]:** Way of writing of the references should be same throughout the reference section

Ray, P., Lakshmanan, V., Labbé, J. L., & Craven, K. D. (2020). Microbe to microbiome: a paradigm shift in the application of microorganisms for sustainable agriculture. *Frontiers in Microbiology*, 11, 622926.

**Comment [C16]:** Ending of page no. is missing , like it starts from page no. 94 to ??

Aghili, F., Jansa, J., Khoshgofarmanesh, A. H., Afyuni, M., Schulin, R., Frossard, E., & Gamper, H. A. (2014). Wheat plants invest more in mycorrhizae and receive more benefits from them under adverse than favorable soil conditions. *Applied Soil Ecology*, 84, 93-111.

Gill, S.S., Gill, R., Trivedi, D.K., Anjum, N.A., Sharma, K.K., Ansari, M.W., Ansari, A.A., Johri, A.K., Prasad, R., Pereira, E. and Varma, A., (2016). Piriformospora indica: potential and significance in plant stress tolerance. *Frontiers in microbiology*, 7, p.332.

**Comment [C17]:** *Microbiology* should start with capital letter

Vahabi, K., Camehl, I., Sherameti, I., & Oelmüller, R. (2013). Growth of Arabidopsis seedlings on high fungal doses of Piriformospora indica has little effect on plant performance, stress, and defense gene expression in spite of elevated jasmonic acid and jasmonic acid-isoleucine levels in the roots. *Plant signaling & behavior*, 8(11), e26301.

**Comment [C18]:** *signaling & behavior*, should start with capital letter

Bárzana, G., Aroca, R., Bienert, G. P., Chaumont, F., & Ruiz-Lozano, J. M. (2014). New insights into the regulation of aquaporins by the arbuscular mycorrhizal symbiosis in maize plants under drought stress and possible implications for plant performance. *Molecular Plant-Microbe Interactions*, 27(4), 349-363.

Chen, J., Zhang, H., Zhang, X., & Tang, M. (2017). Arbuscular mycorrhizal symbiosis alleviates salt stress in black locust through improved photosynthesis, water status, and K<sup>+</sup>/Na<sup>+</sup> homeostasis. *Frontiers in plant science*, 8, 1739.

**Comment [C19]:** *plant science* should start with capital letter

Abdelaziz, M. E., Kim, D., Ali, S., Fedoroff, N. V., & Al-Babili, S. (2017). The endophytic fungus Piriformospora indica enhances Arabidopsis thaliana growth and modulates Na<sup>+</sup>/K<sup>+</sup> homeostasis under salt stress conditions. *Plant Science*, 263, 107-115.

Ma, Y., Dias, M. C., & Freitas, H. (2020). Drought and salinity stress responses and microbe-induced tolerance in plants. *Frontiers in Plant Science*, 11, 591911.

Munns, R. (2011). Plant adaptations to salt and water stress: differences and commonalities. *Advances in botanical research*, 57, 1-32.

**Comment [C20]:** *botanical research* should start with capital letter

Srivastava, S. K. (1987). Peroxidase and poly-phenol oxidase in Brassica juncea plants infected with *Macrophomina phaseolina* (Tassai) Goid. and their implication in disease resistance. *Journal of Phytopathology*, 120(3), 249-254.

Luck, H. (1974). Estimation of catalase activity. *Methods of enzymology*. Academic Press, New York, 885.

Kakkar, P., Das, B., & Viswanathan, P. N. (1984). A modified spectrophotometric assay of superoxide dismutase.

**Comment [C21]:** Journal details missing

Jackson ML. Soil Chemical Analysis. Second edition. Printice Hall of India, New Delhi. 1973, 498.

Chesnin, L., & Yien, C. H. (1951). Turbidimetric determination of available sulfates. *Soil Science Society of America Journal*, 15(C), 149-151.

Baltruschat, H., Fodor, J., Harrach, B.D., Niemczyk, E., Barna, B., Gullner, G., Janeczko, A., Kogel, K.H., Schäfer, P., Schwarczinger, I. and Zuccaro, A., 2008. Salt tolerance of barley induced by the root endophyte *Piriformospora indica* is associated with a strong increase in antioxidants. *New Phytologist*, 180(2), pp.501-510.

**Comment [C22]:** Follow a common pattern for writing reference

Kumar, M., Yadav, V., Tuteja, N., & Johri, A. K. (2009). Antioxidant enzyme activities in maize plants colonized with *Piriformospora indica*. *Microbiology*, 155(3), 780-790.

Sun, C., Johnson, J. M., Cai, D., Sherameti, I., Oelmüller, R., & Lou, B. (2010). *Piriformospora indica* confers drought tolerance in Chinese cabbage leaves by stimulating antioxidant enzymes, the expression of drought-related genes and the plastid-localized CAS protein. *Journal of plant physiology*, 167(12), 1009-1017.

**Comment [C23]:** *plant physiology* should start with capital letters

Nassimi, Z., & Taheri, P. (2017). Endophytic fungus *Piriformospora indica* induced systemic resistance against rice sheath blight via affecting hydrogen peroxide and antioxidants. *Biocontrol Science and Technology*, 27(2), 252-267.

**Comment [C24]:** in the text it is written as Nassimi et ., ?? please check it

Li, L., Li, L., Wang, X., Zhu, P., Wu, H., & Qi, S. (2017). Plant growth-promoting endophyte *Piriformospora indica* alleviates salinity stress in *Medicago truncatula*. *Plant physiology and biochemistry*, 119, 211-223.

**Comment [C25]:** *physiology and biochemistry* should start with capital letter

Alex, T. (2017). *Exploration of natural products from botanicals and fungal root endophytes for the management of cowpea mosaic virus* (Doctoral dissertation, Department of Plant Pathology, College of Agriculture, Vellayani).

Tsai, H. J., Shao, K. H., Chan, M. T., Cheng, C. P., Yeh, K. W., Oelmüller, R., & Wang, S. J. (2020). Piriformospora indica symbiosis improves water stress tolerance of rice through regulating stomata behavior and ROS scavenging systems. *Plant signaling & behavior*, 15(2), 1722447.

**Comment [C26]:** repeated reference

Saddique, M. A. B., Ali, Z., Khan, A. S., Rana, I. A., & Shamsi, I. H. (2018). Inoculation with the endophyte Piriformospora indica significantly affects mechanisms involved in osmotic stress in rice. *Rice*, 11(1), 1-12.

Su, Z.Z., Wang, T., Shrivastava, N., Chen, Y.Y., Liu, X., Sun, C., Yin, Y., Gao, Q.K. and Lou, B.G., 2017. Piriformospora indica promotes growth, seed yield and quality of Brassica napus L. *Microbiological research*, 199, pp.29-39.

**Comment [C27]:** reference not found in the text

Ghabooli, M. (2014). Effect of Piriformospora indica inoculation on some physiological traits of barley (*Hordeum vulgare*) under salt stress. *Chemistry of natural compounds*, 50(6), 1082-1087.

**Comment [C28]:** natural compounds should start with capital letter

Tariq, A., Pan, K., Olatunji, O.A., Graciano, C., Li, Z., Sun, F., Sun, X., Song, D., Chen, W., Zhang, A. and Wu, X., 2017. Phosphorous application improves drought tolerance of Phoebe zhennan. *Frontiers in plant science*, 8, p.1561.

**Comment [C29]:** plant science should start with capital letter

Shahollari, B., Varma, A., & Oelmüller, R. (2005). Expression of a receptor kinase in Arabidopsis roots is stimulated by the basidiomycete Piriformospora indica and the protein accumulates in Triton X-100 insoluble plasma membrane microdomains. *Journal of plant physiology*, 162(8), 945-958.

**Comment [C30]:** plant physiology should start with capital letter

Chandrasekaran, M., Boughattas, S., Hu, S., Oh, S. H., & Sa, T. (2014). A meta-analysis of arbuscular mycorrhizal effects on plants grown under salt stress. *Mycorrhiza*, 24, 611-625.

Fortmeier, R., & Schubert, S. (1995). Salt tolerance of maize (*Zea mays* L.): the role of sodium exclusion. *Plant, Cell & Environment*, 18(9), 1041-1047.