

# Review Article

## A Review on Herb Utilization in Vannamei Shrimp Cultivation

### ABSTRACT

Aquaculture activities play a crucial role in boosting fishery production. Among the various commodities, [Vannamei shrimp](#) (*Litopenaeus vannamei*) stands out as a leading choice due to its competitive pricing and the ability to conduct mass production with high stocking densities. However, shrimp farming has encountered challenges, particularly the occurrence of diseases that often lead to reduced production levels. These diseases typically arise from the shrimp's weakened condition and suboptimal rearing conditions. To address this issue, incorporating several herbal plants, such as noni fruit, ginger, and garlic, into the feed has emerged as an alternative to enhance shrimp immunity. Through an extensive literature search, optimal doses for these herbal additives were identified. Noni fruit demonstrated the best performance at a 6% dose, resulting in a feed conversion ratio (FCR) of 1.1 and a survival rate of 95%. Garlic performed well at a 5% dose, achieving an FCR of 1 and a survival rate of 98%. Similarly, ginger showed promising results at a 3% dose, with an FCR of 1.18 and a survival rate of 98%. The findings of this study emphasize that incorporating herbs into the feed can serve as a viable solution to enhance productivity in [Vannamei shrimp farming](#).

**Keywords:** [Vannamei shrimp](#), [Litopenaeus vannamei](#), [herbs](#), [shrimp disease](#), [feed conversion](#), [survival](#)

### 1. INTRODUCTION

Cultivation plays a pivotal role in bolstering fishery production. Vannamei shrimp (*Litopenaeus vannamei*) stands as a prominent commodity in aquaculture. Its competitive pricing and suitability for mass production with high stocking densities make it highly sought after [1]. Vannamei shrimp enjoys significant demand in both local and international markets due to its exceptional nutritional value and strong economic worth, driving its rapid cultivation [2]. The species boasts various advantages, including ease of cultivation, resilience against bacterial and viral diseases, and adaptability to low salinity environments [3]. Vannamei shrimp culture technology continues to evolve, embracing intensive and supra-intensive techniques that achieve high stocking densities ranging from 100-400 individuals/m<sup>2</sup> [4].

However, shrimp farming encounters challenges, particularly the emergence of diseases that adversely impact production levels. Shrimp diseases primarily arise from shrimp vulnerability caused by factors such as inadequate handling, excessive feeding, and [unfavorable/unfavourable](#) environmental conditions. One effective preventive measure involves the administration of immunostimulants. Immunostimulants encompass chemicals, drugs, stressors, or actions that enhance non-specific or innate immune responses by directly interacting with immune cells [5]. Natural antibiotics, such as a mixture of noni simplicia, turmeric, ginger, garlic, and worm water extract, can be employed as preventive measures to mitigate the risks associated with shrimp diseases.

I recommend reviewing and, if possible, reordering the text as indicated in the guidelines for authors, according to: Introduction, Material and Methods, Results and Discussion, Conclusions.

## 2. VANNAMEI SHRIMP (*Litopenaeus vannamei*)

Vannamei shrimp (*Litopenaeus vannamei*) is native to the subtropical regions along the west coast of America, ranging from the Gulf of California in northern Mexico to the west coast of Guatemala, El Salvador, Nicaragua, Costa Rica in Central America, and Peru in South America. The entry of Vannamei shrimp into Indonesia was authorized by the Decree of the Minister of Maritime Affairs and Fisheries of the Republic of Indonesia No.41/2001, as tiger prawn production had declined since 1996 due to diseases and environmental degradation. Vannamei shrimp has a transparent white body, earning it the nickname "white shrimp," although some individuals may display a bluish hue due to the dominance of blue chromatophores. They can reach a body length of up to 23 cm, with the body divided into two parts: the head (thorax) and abdomen (abdomen). The Vannamei shrimp head consists of antennulae, antennae, mandibles, and two pairs of maxillae.

Image of Vannamei shrimp: One of the primary challenges in vanname shrimp cultivation is the occurrence of bacterial and viral attacks, which have been the leading cause of crop failures to date. Once Vannamei shrimp are infected with a virus, there is no cure available, making prevention the key approach. Boosting the shrimp's ~~defensedefence~~ system is an essential preventive measure, and this can be achieved through the use of immunostimulants, vitamins, and hormones. Enhancing shrimp immunity involves the use of chemicals, drugs, or other substances to stimulate specific and non-specific response mechanisms in fish [6].

The aim of increasing immunity in Vannamei shrimp is to enable them to withstand virus or bacterial attacks that can jeopardize crop yields for shrimp cultivators. Immunity refers to the resistance or resilience to diseases, particularly infections. The immune system involves the coordination of cells, molecules, and tissues that work together to combat infections. Administering immunostimulants aims to activate non-specific immune system cells, such as hemocytes in invertebrates. However, when administering immunostimulants, it is crucial to consider the optimal dosage, as it directly influences the enhancement of the immune response in shrimp [6]. Hemocytes, or shrimp blood cells, consist of three types: granulocyte cells, agranulocyte cells, and hyaline cells. Although the composition and function of hemocytes are not fully understood, monitoring their numbers, types, and microbial activity can be useful in assessing shrimp health. The characteristics and activity of the shrimp ~~defensedefence~~ system, represented by hemocytes, serve as indicators of shrimp health. Among hemolymph parameters, total hemocytes are the most sensitive and consistent under stress conditions in *Farfantepenaeus paulensis* shrimp culture [7].

Changes in the number of hemocytes often correspond to alterations in cell differentiation composition [7]. Hemocytes can be employed as a quantitative parameter to measure stress responses in shrimp. The host's ability to combat foreign substances and respond to infections is influenced by total hemocytes, as low levels of hemocytes can lead to susceptibility to pathogen attacks. An increase in total hemocytes enhances the organism's overall health status by facilitating the formation of phagocytic cells, which play a crucial role in defending against microbial invasions [8].

## 3. SHRIMP DISEASES

Shrimp diseases pose a significant threat to production, including the cultivation of vanamei shrimp. Viral and bacterial infections are the primary causes of mass mortality in

both hatchery and rearing stages. However, comprehensive scientific information regarding the transmission mechanisms of these pathogens in the culture systems of tiger shrimp and *Vannamei* shrimp (*Litopenaeus vannamei*) is currently limited.

In Indonesia, viral infections, including White Spot Syndrome Virus (WSSV), Taura Syndrome Virus (TSV), Yellowhead Virus (YHV), Infectious Myonecrosis Virus (IMNV), and Infectious Hypodermal and Hematopoietic Necrosis Virus (IHHNV), are the most dangerous and result in substantial losses for shrimp farmers. WSSV, in particular, is a highly virulent viral disease that commonly affects both *Tiger* and *Vannamei* shrimp.

**NO TABLES OR FIGURES SHOULD BE GIVEN WITHOUT DISCUSSION OR REFERENCE INSIDE THE TEXT.**

See:

<https://journalajriz.com/index.php/AJRiZ/about/submissions#authorGuidelines>

**I RECOMMEND REFERENCING IN THE TEXT FIGURES 1 AND 2 AND TABLES 1, 2 AND 3.**



**Fig. 1. Shrimp affected by WSSV.**

Vannamei shrimp are susceptible to viral diseases such as Taura Syndrome Virus (TSV), also known as red tail disease. The systemic nature of TSV was first discovered in ponds near the Taura River in Ecuador. Clinical symptoms of *Vannamei* shrimp affected by vibriosis include brownish-red hepatopancreas, red spots on the body, thin and reddish-brown tail. [9] observed that *Vannamei* shrimp affected by vibriosis exhibited red discoloration on the pleopod and abdomen, which appeared luminescent at night. Acute and chronic symptoms of vibriosis in *Vannamei* shrimp are clearly visible, such as blackish back, red spots at the base of the fins, erect scales, slow movement, disturbed balance, decreased appetite, exophthalmia (protruding eyes), fluid-filled abdomen, and hemorrhagic gills, mouth, body, intestines, and internal organs. Peeling skin, sores, necrosis, and ulcers may also develop in advanced stages.

### **3. HERBAL ACTION MECHANISM ON THE SHRIMP IMMUNE SYSTEM**

The mechanism of herbal action on the shrimp immune system aims to enhance shrimp immunity without the negative impacts associated with chemical treatments, such as bacterial resistance. To overcome these drawbacks, an alternative approach is to utilize local ingredients with medicinal properties, specifically herbal mixtures. Herbal supplementation has been found to be effective in increasing the body's resistance of *Vannamei* shrimp. Preventing bacterial infections that can jeopardize the harvest's success is crucial for enhancing the productivity of *Vannamei* shrimp.

Several studies have demonstrated the immunostimulatory effects of herbal components on shrimp immunity. For instance, [10] successfully developed an immunostimulant from noni (*Morinda citrifolia*), which reduced the infection of White Spot Syndrome Virus (WSSV) in shrimp and provided protection. The use of this immunostimulant resulted in survival rates increasing from 26% to 83%. In another study, [11] conducted a trial involving immunized Vannamei shrimp cultivated in ponds, which effectively enhanced their defenses and reduced *Zoothamnium penaei* infestations.

## 5. IMPROVING SHRIMP HEALTH STATUS WITH HERBAL APPLICATIONS

### 5.1 Noni

Noni plants are perennial plants with small stems and broad leaves. They consist of roots, stems, leaves, fruits, and seeds. The root of the noni plant has a taproot structure that penetrates the soil deeply, with root branches and root hairs growing in all directions. Noni fruit (*Morinda citrifolia* L.) is believed to contain phytochemical and antibacterial substances such as scopoletin, anthraquinone, acubin, and alizarin. Ethanol extraction of noni fruit has been shown to inhibit and kill *Aeromonas hydrophila* bacteria. To ensure the production of non-toxic fishery products, the use of natural ingredients such as noni fruit extract is necessary.

**Table 1. Studies on the use of noni in shrimp farming**

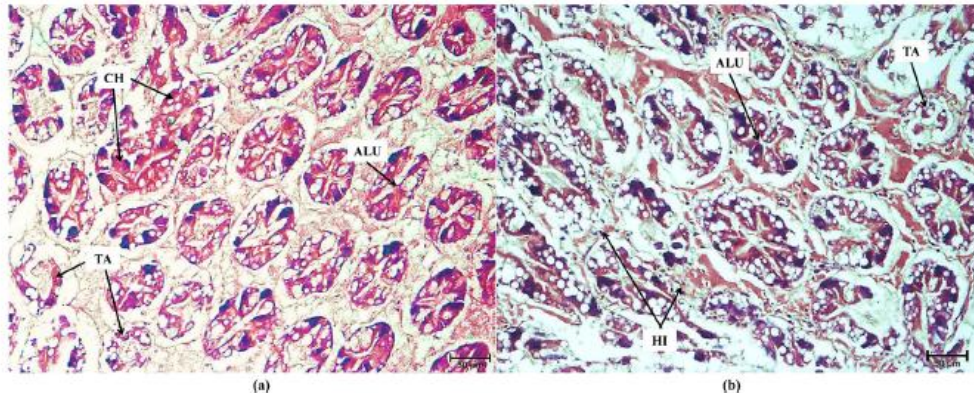
Dosage (%)	Survival Rate (%)	Average Weight Gain (% daily)	Feed Conversion Ratio	Reference
0,5	96	1,4	1,4	[10]
0,6	95	1,8	1,1	[12]
0,5	93	1,6	1,13	[13]

Improved growth performance in aquaculture species through feed supplementation has been previously reported, showing benefits in terms of cost and profitability. The use of plant compounds to enhance the growth performance of fish species has been well documented [14], indicating that supplementing shrimp with plant extracts or beneficial nutrients often leads to improved growth. In this study, the growth performance of *L. vannamei* PL was increased by supplementing with *M. citrifolia* fruit extract. Enhancing the growth of aquaculture organisms through food supplementation typically results in improved productivity, quality, and resistance to pathogen invasion [14].

The hepatopancreas, located in the posterior part of the cephalothorax, is the largest organ in prawns. It consists of a network of channels and tubules that play crucial roles in digestion, nutrition, absorption, storage, and waste disposal [15], similar to the functions of the liver and pancreas in mammals. Additionally, the hepatopancreas is involved in other physiological functions of shrimp, including immune response and ion transport. The preference for using plant-derived products as immunostimulants has increased as an alternative to antibiotics or drugs due to their cost-effectiveness and environmental friendliness [16].

Previous studies have reported the potential of plant extracts to enhance the immunity of various aquaculture species, including fish and shrimp. Improved growth and immunity in aquatic organisms have been associated with increased activity of digestive enzymes [16]. Although the involvement of antioxidant enzymes in enhancing the defense mechanisms and growth of shrimp is not fully documented, the hepatopancreas is known as the metabolic center for digestion and detoxification in shrimp. Crustaceans rely on cellular and humoral immune responses to eliminate infectious

pathogens, which often induce oxidative stress. Therefore, the antioxidant system plays an important role in protecting cells from oxidative stress caused by immune responses and reactive oxygen species (ROS) [17]. The accompanying image shows the hepatopancreas of shrimp supplemented with noni fruit.



**Fig. 2. Shrimp hepatopancreas.**  
**Source: [15]**

The nutritional state of crustaceans is determined by the presence of R cells in the hepatopancreas. R cells are storage cells where nutrients are stored in the form of lipids and/or glycogen droplets [18]. The results of this study demonstrated an increase in the number of R cells with increasing concentrations of *M. citrifolia* fruit extract during the feeding trial period. Previous studies have revealed that nutrients stored in R cells are crucial for decapod physiology during periods of starvation, molting, and reproduction [19]. B cells, derived from F cells, are the most abundant cells in the hepatopancreas [15]. These highly vacuolated cells appear in different sizes and shapes at various functional stages, enabling them to be involved in intracellular digestion and absorption of nutrients through protein synthesis and digestive enzymes [19].

Nutrients are stored in vacuoles before being released, along with remaining enzymes, into the lumen for reabsorption by R cells. Based on this evidence, the current research suggests that supplementing *L. vannamei* PL with *M. citrifolia* fruit extract has the potential to increase the conversion of F cells to B cells, leading to enhanced intracellular digestion, absorption of nutrients, and ultimately, animal growth. E cells are actively dividing cells and play a crucial role in cell renewal, facilitating optimal tubular growth and maintaining hepatopancreatic health [15]. The increase in the number of E cells observed in this study indicates an increase in mitotic cell division [20], suggesting that supplementation of shrimp with *M. citrifolia* fruit extract promotes cell renewal and growth in the hepatopancreas of *L. vannamei* PL.

## 5.2 Garlic

Garlic contains bioactive compounds including organosulfur, phenolic components, and flavonoids, which possess antioxidant properties. When shrimp are exposed to air, enzymatic oxidation occurs, and the phenolic group-containing amino acid tyrosine is oxidized by the enzyme polyphenol oxidase.

The growth rate of fish refers to the increase in weight or length over a specific period of time and is influenced by both external and internal factors within the fish's body. Among the external factors, food plays a significant role in promoting growth. Protein is an essential component in this process as it serves as the main source of energy, facilitates tissue

formation and maintenance, aids in the replacement of damaged tissue, and supports metabolic processes.

In an experimental study, it was found that the optimal specific growth rate in tilapia was achieved by supplementing the feed with 2% coconut husk oil extract, outperforming other treatments. These results suggest that the addition of 2% coconut husk oil extract is an appropriate dosage that is well-tolerated by fish and promotes the digestion and utilization of nutrients from the feed, leading to good-quality feed and enhanced growth. This aligns with [emphasizedwith emphasized](#) that improved nutrient digestibility enables better utilization and intake of nutrients from high-quality feed, resulting in superior growth performance. Previous research has also indicated that the inclusion of medium-chain fatty acid distillates from coconut oil can increase food intake in fish, thereby promoting weight gain. [FurthermoreFurthermore](#), it is reported that the addition of coconut oil to the feed enhances the activity of the lipase enzyme in tilapia, which is associated with increased feed and protein utilization.

Fasting and subsequent re-feeding lead to higher growth compared to fish fed daily. During fasting, fish tend to utilize fat stores in the body as a source of metabolic energy, resulting in increased levels of blood plasma fat and triglycerides, and decreased insulin levels. Upon re-feeding, insulin levels increase while fat and triglyceride levels decrease. This indicates that fasting stimulates the utilization of stored fat as an energy source, while re-feeding promotes the utilization of carbohydrates. The utilization of energy from fat during fasting and carbohydrate energy during re-feeding allows protein energy to be utilized for body tissue formation and repair, ultimately promoting maximum growth. The stored protein in the body serves as the raw material for building body tissues, supporting weight gain.

Under fasting conditions, the activity of the amylase enzyme tends to decrease and then increases upon re-feeding. [21] found that fasting treatment in *Sepia phaonis* fish leads to decreased activity of digestive enzymes such as amylase, lipase, pepsin, and trypsin. Upon re-feeding after fasting, amylase and lipase enzyme activity increases and becomes comparable to fish fed daily. In contrast, the activity of pepsin and trypsin decreases after fasting. The increased post-fasting activity of amylase suggests that carbohydrates are utilized as energy for tissue repair during fasting.

**Table 2. Studies on the use of garlic in shrimp farming**

Dosage (%)	Survival Rate (%)	Weight Gain Average (% daily)	Feed Conversion Ratio	Reference
4	97	1,01	1,35	[22]
5	98	1,33	1	[23]
6	96	1,23	1,12	[21]
2	77 – 88	1.03	1,13	[24]

### 5.3 Ginger

Ginger, a common spice and seasoning, has natural antibiotic properties. Various studies have demonstrated that ginger contains substances that can reduce inflammation in the body and eliminate infection-causing germs. Ginger has been found to be effective against bacteria such as *E. coli*, *Staphylococcus*, and *Streptococcus*, which can cause skin infections, diarrhea, and pneumonia. Considering the inhibitory effects of substances or compounds found in plants such as ginger, garlic, and honey on bacterial growth, it is important to investigate their effects on *Vibrio* sp bacteria, which often infect shrimp. These herbal remedies could serve as alternative methods for shrimp farmers to control the population of *Vibrio* sp bacteria in the rearing water media [25].

*Zingiber officinale*, commonly known as ginger, is a globally recognized medicinal plant that contains sesquiterpenes and phenolic compounds, including gingerol and shogaol.

Ginger consists of various bioactive components such as alkamides, caffeic acid derivatives, polysaccharides, flavonoids (quercetin, kaempferol, isorhamnetin), and free phenolic acids (p-coumaric, phydroxybenzoic, and protocatechuic acids). These compounds contribute to the diverse therapeutic properties of ginger.

Research conducted by [26] demonstrated that ginger extract significantly increased the activity of important enzymes such as superoxide dismutase (SOD), glutathione peroxidase (GPx), phenoloxidase (PO), and catalase (CAT), leading to excellent shrimp growth. Ginger plant extracts have been recognized for their various beneficial effects in aquaculture, including promoting growth, stimulating appetite, boosting immune function, and exhibiting anti-pathogenic and anti-stress properties in shrimp and fish. Several studies have reported that incorporating *Z. officinale* into the diet positively impacts the growth performance and feed utilization of aquatic animals and shrimp.

**Table 3. Studies on the use of ginger in shrimp farming**

Dosage (%)	Survival Rate (%)	Average Weight Gain (%) daily)	Feed Conversion Ratio	Reference
3	98	1,9	1,18	[26]
4	94	1,56	1,32	[27]
3	95	1,87	1,17	[28]
5	92	1,78	1,19	[29]

## 6. CONCLUSIONS

I recommend including a first paragraph that points out that the results focus on the Vannamei shrimp (*Litopenaeus vannamei*).

After analyzing the results from various studies, it can be inferred that the optimal dosage for noni fruit extract is 6%, yielding a feed conversion ratio (FCR) of 1.1 and a survival rate of 95%.

Garlic extract shows the best performance at a dosage of 5%, resulting in an FCR of 1 and a survival rate of 98%. Similarly, ginger extract exhibits its highest efficacy at a dosage of 3%, achieving an FCR of 1.18 and a survival rate of 98%.

I recommend adding a couple of paragraphs that point out that the results of this study emphasize that incorporating herbs into feed can serve as a viable solution to improve productivity in Vannamei shrimp farming.

IN THE REFERENCES THE NUMBER IS DUPLICATED.  
I RECOMMEND REMOVING

I ALSO RECOMMEND REDOING THE LISTING AS INDICATED IN THE  
GUIDELINES FOR AUTHORS.

See: <https://journalajriz.com/index.php/AJRiZ/about/submissions#authorGuidelines>

1. Hilly M, Adams ML, Nelson SC. A study of digit fusion in the mouse embryo. *Clin Exp Allergy*. 2002;32(4):489-98.

**SEE BELOW**

## REFERENCES

1. ~~4~~-Mangampa M. and Suwoyo HS, Intensive Technology Vaname Shrimp (*Litopenaeus vannamei*) Cultivation Using Tolan Seeds. *Aquaculture Research Journal*, 2016; 5(3): 351-361.
2. ~~2~~-Mahbubillah MA, 2011. Vannamei Shrimp Cultivation. Accessed at: March 2015. Available: <http://marinebiologi.blogspot.com>.
3. Kaligis E. Growth Response of Vaname Shrimp (*Litopenaeus vannamei*) in Low Salinity Media with Different Protein and Calcium Feeds. *Journal of Tropical Marine Science and Technology*, 2015; 7(1): 225-234.
4. Nababan E, Putra I, ~~and~~ Rusliadi ~~X~~. Maintenance of vannamei shrimp (*Litopenaeus vannamei*) with different percentages of feeding. *Fisheries and Maritime Scientific Journal*, 2015; 3(2).
5. Syakuri H, Triyanto ~~X~~ and Nitimulyo KH. Differences in non-specific resistance of five freshwater fish species against *Aeromonas hydrophila* infection. *UGM Journal of Fisheries*, 2003; 5(2):1-10.
6. Aiyushirota. The Concept of Heterotrophic Bacterial Shrimp Culture with Bioflocs. 2009. accessed on 9 February 2013. Available: [www.aiyushirota.com](http://www.aiyushirota.com)
7. Hartinah, La Paturusi LS and Rimal H. Number and Differentiation Performance of Juvenile Tiger Shrimp (*Penaeus Monodon* Fabr.) Cells in Rearing with Different Cultivation Technology Levels. *Journal of Bionature*, 2014; 15(2):104-110
8. Tenriulo A, Parenrengi A, and Tampangallo BR. Immune Response of Tiger Shrimp, *Penaeus monodon* Carrying Disease Resistant DNA Markers After Exposure to Pathogenic Bacteria *Vibrio harveyi*. Proceedings of the 2014 Aquaculture Technology Innovation Forum
9. Sunaryanto A, Mariam A, Pudjianto. Shrimp disease. INFIS Manual Series No. 43. Jakarta: Director General of Fisheries. 1987.
10. Julia M. Effect of Noni, *Morinda citrifolia* fruit extract supplementation on the growth performances and physiological responses of the hepatopancreas of Whiteleg shrimp, *Penaeus vannamei* Post Larvae. *Aquaculture Reports* 21. ELSEVIER. 2021
11. Gustrifandi H. Prevalence of *Zoothamnium penaei*, Immune Response and Survival of Vaname Shrimp (*Litopenaeus vannamei*) in Ponds Immunized with *Zoothamnium penaei* Immunogenic Membrane Protein. Thesis, Graduate Program, Airlangga University. 2013

12. Boudet LNC, Polizzi P, Romero MB, Robles A, Marcovecchio JE, Gerpe MS. Histopathological and biochemical evidence of hepatopancreatic toxicity caused by cadmium in white shrimp, *Palaemonetes argentinus*. *Ecotoxicol. environment. Saf.* 2015; 113:231–240.
13. Halim AM, and Prajitno A. Aqueous *Morinda citrifolia* leaves extract enhancing glutathione peroxidase activity and  $\alpha 2$  macroglobulin gene expression and *Macrobrachium rosenbergii*. *Res. J. Life Sci.* 2017; 4(1).
14. Yilmaz S, Effect of dietary blackberry syrup supplementation on growth performance, antioxidants, and immunological responses, and resistance of Nile tilapia, *Oreochromis niloticus* to *Plesiomonas shigelloides*. *Fish Shellfish Immunol.* 2019; 84:1125–1133.
15. Silva MAS, Neto MEA, Ramiro BO, Santos ITF, Guerra RR. Histomorphologic characterization of the hepatopancreas of freshwater prawn *Macrobrachium rosenbergii* (De Man, 1879). *Arch. Bras. med. Vet. Zootec.* 2018; 70(5):1539–1546.
16. Shabana MS, Karthika M, Ramasubramanian V. Effect of dietary *Citrus sinensis* peel extract on growth performance, digestive enzyme activity, muscle biochemical composition, and metabolic enzyme status of the freshwater fish, *Catla catla*. *J. Basic Appl. zool.* 2019;80(51)
17. Hlophe SN, Moyo NAG. A comparative study on the use of *Pennisetum clandestinum* and *Moringa oleifera* as protein sources in the diet of the herbivorous *Tilapia Rendalli*. *Aquac. int.* 2014; 22:1245–1262.
18. Wang X, Li E, Xu C, Qin JG, Wang S, Chen X, Cai Y, Chen K, Gan L, Yu N, Du Z, Chen L. Growth, body composition, ammonia tolerance and hepatopancreas histology of white shrimp *Litopenaeus vannamei* fed diets containing different carbohydrate sources at low salinity. *Aquac. Res.* 2014; 1–12.
19. Ribeiro K, Papa LP, Vicentini CA, Franceschini-Vicentini IB. The ultrastructural evaluation of digestive cells in the hepatopancreas of Amazon River prawn, *Macrobrachium amazonicum*. *Aquac. Res.* 2016; 47(4):1251–1259.
20. Bhavan PS and Geraldine P. Histopathology of the hepatopancreas and gills of the prawn *Macrobrachium malcolmsonii* exposed to endosulfan. *Aquatic Toxicology* 2000; 50:331–339
21. Lee DH, Lim SR, Han JJ, Lee SW, Ra CS and Kim JD. Effects of dietary garlic powder on growth, feed utilization and whole-body composition changes in fingerling sterlet sturgeon, *Acipenser ruthenus*. *Asian-Australasian Journal of Animal Sciences*, 2014; 27:1303–1310.
22. Xu W and Pan L. Effects of bioflocs on growth performance, digestive enzyme activity and body composition of juvenile *Litopenaeus vannamei* in zero-water exchange tanks manipulating C/N ratio in feed. *Aquaculture* 2012; 356–357:147–152.
23. Jack RP, Labrador, Recamar C, Guinares and Hontiveros SJG. Effect of garlic powder-supplemented diets on the growth and survival of Pacific white leg shrimp (*Litopenaeus vannamei*). *Cogent Food & Agriculture* 2016; 2:1210066.
24. Day B, Madhusoodana KB, Varghese JT, Schrama JW, Verdegem MCJ. The effect of carbohydrate addition on water quality and the nitrogen budget in extensive shrimp culture systems. *Aquaculture* 2006; 252: 248-263.
25. Hamzah, Herawaty, Hasmawati. Inhibitory Test of Honey, Onion and Ginger Against Several Types of Bacteria *Vibrio* sp. *SIGANUS: Journal of Fisheries and Marine Science* 2021; 2(2)
26. Shahraki N, Imanpour MR, Akbary P, Safari R, and Jafari V. Dietary administration of aqueous *Zingiber officinale* extraction growth performance, antioxidant activity and resistance of shrimp *Litopenaeus vannamei* against *Photobacterium damsela*. *Iranian Journal of Fisheries Sciences* 2021; 20(1): 32-44
27. Malar V, and Maria CP. Efficacy of Garlic on The Survival, Growth and Haematology of *Penaeus Monodon* Post Larvae.: 2013; 2(3)
28. Mahesh KR, Narshivudu D, Ashok, Ganesh G, Yesu DB, Suresh Ki and Mohan M. Effect of ginger, garlic and fenugreek powder supplemented diets on survival of pacific white leg shrimp. *Journal of Entomology and Zoology Studies* 2019; 7(3): 1233-1238

29. 29. Shakya, SR. 2015. Medicinal uses of ginger (*Zingiber officinale* Roscoe) improves growth and enhances immunity in aquaculture. *International Journal of Chemical Studies* 2015; 3(2): 83-87

UNDER PEER REVIEW