

## Original Research Article

### **Teachers' Standpoint: Managing Noise Pollution in Basic Schools**

Comment [u1]: Teachers' Standpoint in Managing Noise Pollution in Basic Schools

#### **ABSTRACT**

**Aim:** Few studies have been done with little to no attention paid to how teachers perceive noise pollution and their management in the school environment in Ghana. This study sought to assess the awareness of basic school teachers on noise pollution, the sources of noise they encounter on the school environments as well as their suggestions on how to control or manage such noises.

**Methodology:** In order to evaluate the awareness, causes, and control of noise pollution in the basic schools, a set of questionnaires was used. Questionnaires were reviewed to make sure they were correctly filled out and to ensure internal consistency. The teachers were randomly selected for the study. Descriptive statistics was presented as frequencies and percentages for categorical variables. Data analysed was presented in figures and tables. Control measures were reported.

**Results:** Female teachers (n=147) greater than the males (n=129) participated in the study. Majority of the respondents (n=134, n=113) had taught for 0-5 years and fell within the age range of 30-39 years respectively. The teachers were aware of noise pollution with key sources of noise from students' activities (65.2%) and vehicles (56.2%). Primarily, the teachers asked for continuous education on noise pollution and its many challenges.

Comment [u2]: 0-5 years

**Conclusion:** Basic school teachers admit that noises are present on the school environment and require management to make their work safe.

**Keywords:** *Environmental Pollution, Noise, Occupational*

Comment [u3]: Occupational????????

#### **1.0 INTRODUCTION**

Noise pollution is a significant issue that has surfaced for developing countries due to urbanization, industrialization, and population growth and the phenomenon is characterized by rising noise levels that exceed permissible thresholds. Noise pollution in urban areas is third to air and water pollution [1].

The playtimes and after-school activities of students produce a variety of noise sources that are present on and around school grounds. Markets, truck stops, music stores, and bars all produce high-voltage noise from the outside. Adding to the environmental noise at schools are nearby villages, railroads, airplanes, classroom computers, air-conditioners and automobiles [1,2]. According to Moses and Donovan [3], inadequate city planning, the location of industries, and construction methods all contribute to noise pollution in residential neighbourhoods. People, machines, factories, commercial spaces, and houses all produce noise in metropolitan environments.

Studies have been done on noise pollution at social events like funerals, church services, and markets. The findings revealed significant noise levels that were beyond WHO threshold. Loud music from churches, vendors, drinking establishments, and mills caused a spike in noise nuisance in Ghana and Accra in particular. Even in the presence of regulatory guidelines set forth by the EPA, Ghana, this noise remained and persists. However, few studies have been done with little to no attention paid to how basic school teachers perceive noise pollution and their management in the school environment [4,5]. Less investigations have been done in Ghana to support findings from earlier studies on noise pollution and its control or management in the school environments. The location of schools through out the

nation is one factor greatly contributing to this environmental issue. In Ghana, the majority of schools are located close to commercial and active locations, such as lorry parks, markets, motorways, community centers, and mechanic shops, among others. As a result, school teachers are frequently exposed to loud noises [4]. The expectation has been that, since the physical, social, artistic, and intellectual development through effective teaching and learning takes place in schools, those environments must be free from excessive noise [6]. In spite of the regulatory guidelines by the Environmental Protection Agency of Ghana on noise pollution in educational facilities, Ghanaian schools continue to deal with this environmental problem. The current study is crucial because it will be used to establish more realistic noise control and management plans in the basic school environments. Therefore, this study sought to assess the awareness of basic school teachers on noise pollution, the sources of noise they encounter on the school environments as well as their suggestions on how to control or manage such noises.

## 2.0 MATERIALS AND METHODS

### 2.1 Study Area

The study was carried out at Ghana's centrally located Ashanti Region's Old Tafo Municipality. It shares boundaries with Kumasi Metropolitan Assembly, Suame Municipal Assembly, Afigya Kwabre North and Kwabre East Municipality on the East, West, South and North respectively. The Municipality covers 31.13 square kilometre of land area, situated between Longitude and Latitude of 1.35°W and 1.37°W; 6.42°N and 6.45°N respectively. It is elevated 250 to 300 meters above sea level and nearly 270km north of the national capital, Accra. There are 77 basic schools of which 38 are public schools and 39, private ones [7].

Comment [u4]: ????????????

Comment [u5]: There should be a space between 270 and km. 270 km

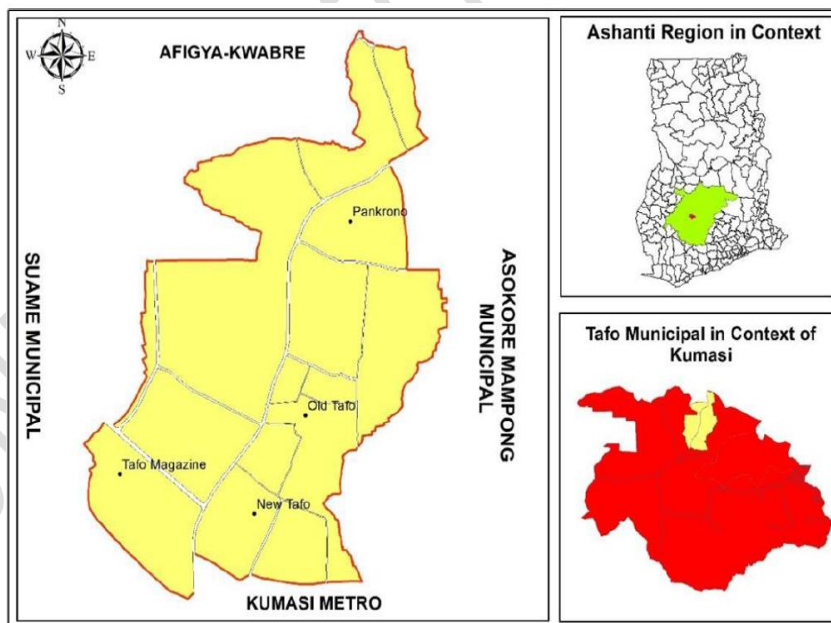


Figure 1. Map showing the Old Tafo Municipality [7]

## 2.2 Study Design

The design was descriptive. The responses from the questionnaires /survey were defined by frequencies and percentages.

## 2.3 Study Population and Sampling

Basic schools have average of fifteen (15) teachers. For 77 schools within the Old Tafo Municipal GES, the study population was estimated at approximately One Thousand, One Hundred and Sixty teachers (1,160). Basic school teachers were randomly selected for the study.

**Comment [u6]:** What is the full meaning of GES????? Full meaning should come before abbreviation.

## 2.4 Sample Size Determination

Yamane (1967:886) simplified formula for sample size was used. The assumed confidence level is 95%, P (estimated standard deviation of the scale) = 0.50 and ±5% precision level. Equation below is used:

$$n = \frac{N}{1 + N(e)^2}$$

'N' represents population size, 'e' is the precision level and 'n' is the sample size [8].

**Comment [u7]:** This citation is different from others, where "NUMBERS" were used. What is the Reference number of this author?????????????

## 2.5 Data collection

A set of questionnaire was used to assess the awareness, sources and management of noise pollution in the basic schools.

## 2.6 Statistical Analysis

Questionnaires were evaluated whether they were filled well and also for the internal consistency. A three-point scale was used and Cronbach's alpha was determined (Awareness- 0.6, Sources of noise - 0.7). Descriptive statistics was presented as frequencies and percentages for categorical variables. Data analysed was presented in figures and tables. Data was analyzed in IBM SPSS Statistics 25.

# 3.0 RESULTS AND DISCUSSION

## 3.1 Results

A survey was completed by 276 basic school teachers, or 92.9% of the convenient sample size (297 teachers, or 100%). The responses were then processed to determine the percentage frequencies of responses to each question. Due to misplacement, extended absences, and respondents who refused to answer questions, the remaining 7.1% could not be located. Table 1 and Figures 2 and 3, give the findings of the demographic features of the study population, the percentage replies on the perception of basic school teachers in relation to awareness of noise pollution and the sources or causes. The final section reports on control and management measures.

### 3.1.1 Demographic characteristics of respondents

The demographic features of basic school teachers who responded to the questionnaire are depicted in Table 1 below. 114 and 162 public and private basic school teachers respectively participated in the study with the female population (n=147) greater than the male population(n=129). Majority of the respondents (n=134, n=113) had taught for 0-5years and fell within the age range of 30-39 years respectively. The least age range involved in the study was staff >=60years.

**Comment [u8]:** The total of 114 and 162

**Comment [u9]:** 0-5 years

**Comment [u10]:** ≥ 60 (This is the symbol for greater or equals to)

**Table 1. Demographic characteristics of basic school teachers**

Categories	Frequency	Percent
<b>Type of school</b>		
public school	114	41.3
private school	162	58.7
Total	<b>276</b>	<b>100.0</b>
<b>Gender</b>		
Male	129	46.7
female	147	53.3
Total	<b>276</b>	<b>100.0</b>
<b>Years of teaching</b>		
0-5 years	134	48.6
6-10years	61	22.1
11-15years	40	14.5
16-20years	19	6.9
>20years	22	8.0
Total	<b>276</b>	<b>100.0</b>
<b>Age range</b>		
18-29years	97	35.1
30-39years	113	40.9
40-49years	43	15.6
50-59years	17	6.2
≥60years	6	2.2
Total	<b>276</b>	<b>100.0</b>
<b>Mean (Age range):</b>		
30- 39years		

**Comment [u11]:** ≥ 60 (This is the symbol for greater or equals to)

### 3.1.2 Basic school teachers' awareness of noise pollution

The percentage frequencies of responses on basic school teachers' awareness of noise pollution are shown in figure 2 below. Eight (8) of the eleven (11) items answered by the respondents in this section received high percentages of "yes" replies, demonstrating a high level of their awareness of noise pollution. In particular, "Do you know what noise pollution is?" 98.6% of the study participants responded "yes" to the question. The question "do you utilize an ear protection device while in a noisy environment?" had the fewest "yes" responses (5%) though. The figure below indicates that although basic school teachers are highly aware of noise pollution, most are unaware of the EPA permitted noise level for educational institutions, do not report noise concerns related to their schools, and do not wear earplugs when in noisy environments.

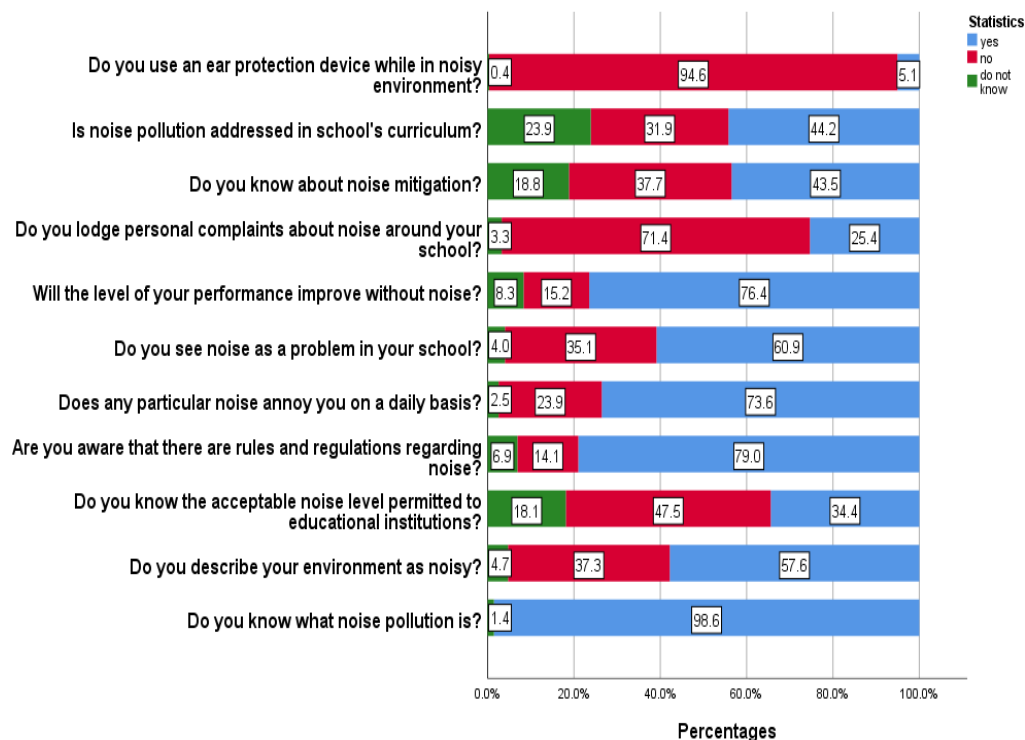


Figure 2. Percentage frequencies of responses on teachers' awareness of noise pollution

### 3.1.3 Sources of noise pollution in the basic schools

The percentage frequencies of responses on the sources of noise pollution in the basic schools are depicted in figure 3 below. The key sources of noise pollution reported by the respondents were students' activities, vehicles, and people at 65.2%, 56.2%, and 51.1% respectively. While there were some "yes" replies from other sources, including loud music and speakers, traffic horns, religious activities, commercial areas and marketplaces, and auto repair businesses, their relatively "no" responses outweighed them in terms of percentage frequency. Therefore, those sources are not considered to be major noise pollution sources in the basic schools. The least source of noise pollution in the basic schools was commercial areas and marketplaces (18.8%).

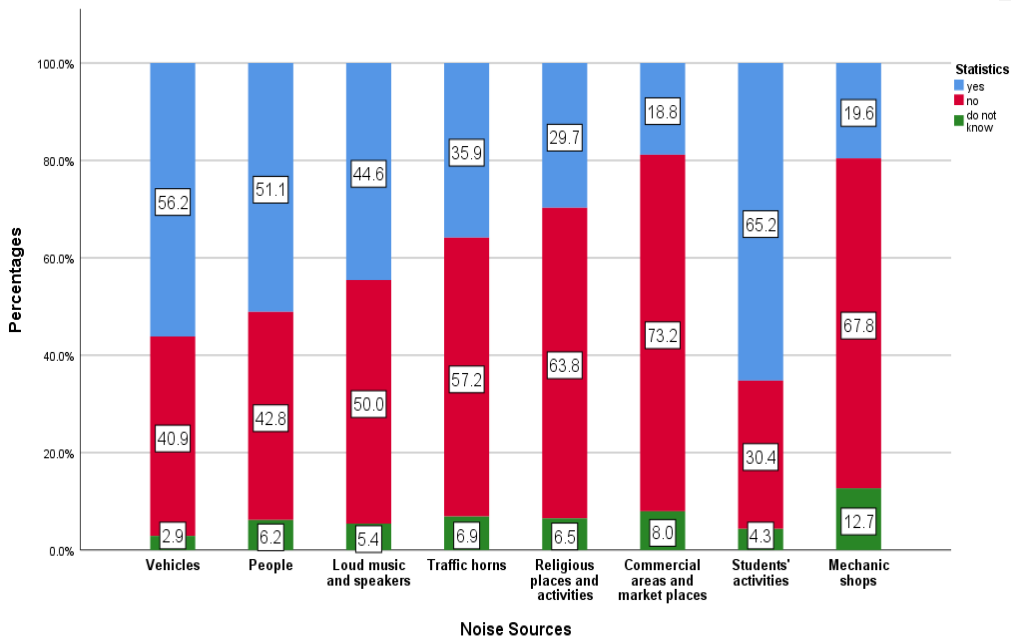


Figure 3. Percentage frequencies of responses on sources of noise pollution

### 3.1.4 Teachers' Perceptions on Managing Noise Pollution in the Basic Schools

A hundred and forty-one (141) of the total respondents representing 51% of the basic school teachers suggested various ways of managing the noise pollution in their schools. Primarily, the basic school teachers asked for continuous education and awareness creation on noise pollution and its many challenges. This was followed by making rules and regulations on noise pollution to safeguard the school environment. Most of the basic school teachers suggested that the Assemblies strictly enforce by-laws and put measures to ensure compliance by all people even to the point of sanctioning/punishing offenders. Other ways of managing noise pollution in the basic schools were the use of sound-proof materials on the walls of the school buildings, shutting of the windows to block noise penetrating, fencing and providing walls around schools. Some basic school teachers were of the view that noise sources which are very close to basic schools should be eliminated by relocating such sources. They further advised that future structures should not be sited around such noise sources but rather at isolated or serene environments. Additionally, basic school teachers who suffered disturbances from the noise from religious activities around their environments suggested that church services should be done after the school or learning hours of the day. In some basic schools, nearby schools break times disturbed teaching and learning. Therefore, basic school teachers advised that all such schools should run the same break times harmoniously. They added that in order to manage noise pollution around the school environments, it is needful to regulate and control students' activities which generate noise in the schools. Finally, tree planting around the school environment should be encouraged.

**Comment [u12]:** There is no Figure showing the respondents answer to these control measures explained here

### 3.2 Discussion

The study findings focused on the awareness, sources and management of noise pollution in basic schools in Old Tafo Municipality of Ghana. The World Health Organization claims that because there are so many different variables, it is

challenging to quantify how noise affects quality of life. Nevertheless, there is a need to research noise because this issue has a significant impact on the world's population (9). Majority of the basic school teachers were aware of noise pollution in their environment. However, only a few knew the acceptable noise limit set by the Environmental Protection Agency (EPA) of Ghana. Majority of them did not lodge complaints, neither did they use ear protection devices. The main sources of noise were from students' activities and vehicles which corroborates with the findings of Phadke et al. (10) and Bulunuz et al. (11). According to the basic school teachers, much education on noise pollution and its consequences is needed to improve its management strategies. The control measure deemed a priority by the majority of respondents on the other hand seems to be a weaker option as compared to eliminating the sources of the noise suggested by few respondents. On the hierarchy of hazard control and prevention, eliminating the source/hazard is most preferred option as compared to educating the respondents on noise pollution which represents an administrative control. Therefore, the study further suggests that education should be done but should be more focused on eliminating the sources of the noise hazard itself than focusing on administrative controls meant to change the way people work.

Comment [u13]: on noise pollution

Comment [u14]: noise pollution

Comment [u15]: corroborate

Comment [u16]: italicize

Comment [u17]: italicize

The study on the other hand presents some limitations such as the use of a subjective approach, such as surveys for data collection. Although surveys may provide some useful data and provide insights into research questions, there is always a risk of bias. The amount of knowledge respondents contained about noise pollution and how they interpret questions on the self-reports could have an impact on the information gathered, evaluated, and interpreted. Also, not all respondents suggested a control measure to the situation in their school's environment. Only 51% of the convenient sample size responded. Therefore, the results on control measures could only be limited to this fraction and could have probably been altered if all respondents had suggested a control measure. Furthermore, there was less chance that these findings could be generalized if only basic school teachers in Old Tafo Municipality were included in the survey. The educational levels of respondents which was not evaluated as part of this study could be a contributing factor for the lack of knowledge on the permissible noise level by the EPA of Ghana.

Comment [u18]: Check this sentence. What is contained doing here?????

Comment [u19]: What do you mean here that "if only basic school teacher in.....were included in the survey?????? But the basic school teachers were used as respondents!!!!!!!!!!!!!!

Despite these drawbacks, this study provides empirical evidence and useful contributions to knowledge on noise pollution and management options in basic schools. The analysis also shed light on some issues that needs to be attended to in order to safeguard the work of the basic school teachers

#### 4.0 CONCLUSION

According to the findings of this study, basic school teachers admit that noises are present on the school environment and require management to make their work safe. One key management approach that should be adapted is the elimination of the sources of the noises if that is possible. Therefore, education should concentrate on informing all policy makers and stakeholders on elimination than just the administrative controls which changes the way workers work.

Comment [u20]: adopted

The study further recommends investigations into the health impacts of the noise exposure of the basic school teachers and other awareness and prevention campaigns to curb the impacts of this environmental menace in basic schools.

#### REFERENCES

1. Osei FA, Effah EA. Health Effects caused by Noise - The Case of Africa: Evidence in Literature from the Past 25 Years. *Asian J Adv Res Rep.* 2022; 16(2):19-27. <https://doi.org/10.9734/ajarr/2022/v16i230452>
2. Amoatey P, Al-Harthy I, Al-Jabri K, Al-Mamun A, Baawain MS. Investigation of Noise Exposures, Perception, and Health Effects in Different Microenvironments in a University

Community. *J Eng Res*. 2022;19(1):22–32. <https://doi.org/10.53540/tjer.vol19iss1pp22-32>

3. Moses T, Donovan M. Air, Noise and Water Pollution Handbook. Rev ed. 2016:60-104.

4. Sowah RA, Yankson AA, Carboo D, Adaboh RK. Noise pollution in Teshie-Nungua Schools. *J Nat Sci Res*. 2014;4(21):90-98.

5. Quartey LNK, Amos-Abanyie S, Afram SO. Noise exposure levels in basic school environments in a City in Ghana. *Open J Civ Eng*. 2021; 11:81-95.

6. Ochiabuto OMTB, Abonyi IC, Ofili RN, Obiagwu OS, Ede AO, Okeke M et al. Assessment of Noise Levels in Primary and Secondary Schools in Nnewi, Anambra State. *Eur J Environ Public Health*. 2021; 5(1):1-4. <https://doi.org/10.29333/ejeph/8425>.

**Comment [u21]:** italicize

7. Composite Budget for 2023-2026 Programme Based Budget Estimates for 2023 Old Tafo Municipal Assembly.(2023).

8. Ajay S, Micah B. Sampling Techniques & Determination of Sample Size in Applied Statistics Research: An Overview. 2014; 11(11):1–22.

9. Filho OB, Ribas A, Gonçalves CGO, Lacerda ABM, Riesemberg R, Klagenberg K. Perception of noise pollution in a youth and adults school in Curitiba-PR. *Int Arch Otorhinolaryngol*. 2017;21(4):313–317. <https://doi.org/10.1055/s-0036-1597118>

**Comment [u22]:** The arrangement of Reference No. 8 is wrong. The Journal name is not there. The title is also wrong (Determination of sample size in ??????????????)

10. Phadke KV, Abo-Hasseba A, Švec JG, Geneid A. Influence of Noise Resulting from the Location and Conditions of Classrooms and Schools in Upper Egypt on Teachers' Voices. *J Voice*. 2019;33(5): 802. <https://doi.org/10.1016/j.jvoice.2018.03.003>

**Comment [u23]:** adults'

11. Bulunuz N, Coskun OB, Bulunuz M. Teachers' noise sensitivity and efforts to prevent noise pollution in school. *J Qual Res Educ*. 2021; 26:171-197. <https://doi.org/10.14689/enad.26.8>

**Comment [u24]:** ??????????????