

Original Research Article

Qualitative evaluation of the high resolution satellite precipitation products with dense surface rain gauge observations in Odisha over a time period

Abstract

Aim: The study aims to the Hydro-Estimator Method (HEM) has been used as the noble approach for analysing the heavy rainfall episodes over entire Odisha using the INSAT-3D satellite- derived rainfall estimates. The findings demonstrate that, in terms of the frequency of rainfall occurrences, INSAT-3D satellite rainfall products clearly illustrated both the spatial and temporal variability in rainfall pattern of Odisha. The performance statistics with IMERG and daily merged satellite retrieved rainfall show that both the dataset correlated well with the HEM with a small deviation. For heavy rainfall events, HEM shows good skill and correlation in detecting heavy rainfall with an accuracy of 20 mm and good pattern matching with actual rainfall.

Place and Duration of Study: Entire Odisha is considered as study area, which is located in the eastern part of India. It comprises of 30 districts and of 314 blocks spreading over an area of 155707 km².

Methodology: The state has 30 districts, which are further divided into 314 revenue blocks. The rainfall data (1 year; 2016) for all the blocks of Odisha has been obtained from Special Relief Commissioner (SRC), Government of Odisha and subjected to further analysis process.

Results: The satellite derived rainfall estimates viz., HEM, were evaluated with rain gauge based gridded data viz., IMD-GRIDDED Dataset for the year 2016 over the Odisha region at the summer monsoon period. The satellite derived rainfall estimates HE have exhibited some good results with the IMD-GRIDDED Dataset its average R² on a daily basis for different blocks is 0.34 and on a monthly basis it is 0.44. RMSE has also been determined to different block for JJAS month. The average RMSE on daily basis is 17.7 and on monthly basis is 94.6 as shown in bias maps.

Conclusion: In our research analysis. it is concluded that the HE rainfall product is good in comparison with station data, but also needs human intervention and value addition to improve skill score. Also, we derived that verification of rainfall forecasting (yes/no aspect) is also good, but it can be better by some quality improvements.

Keywords: Daily merge satellite gauge (DMSG), Hydro-Estimator Method (HEM), INSAT-3D, Odisha, precipitation

Introduction

Normally precipitation is considered as one of the vital input data in different hydrologic models. Thus acquisition of more reliable and accurate precipitation data became highly essential for better hydrologic prediction and water resource management on local, regional and global scale. Traditionally, the acquisition of precipitation data is often limited to ground-based observations (using rain gauges and/or ground-based weather radars) although these surface-based observations usually suffer from low spatial coverage, especially in developing regions where ground-based observations are rare or even unavailable.

In recent years, different research groups showed keen interest in developing high resolution gridded rainfall data sets. (Huffman *et al.* 1997, Xie and Arkin 1997). For validating the same high resolution observed rainfall data are also required to examine and model the intra-seasonal oscillations like the Madden-Julian Oscillation (MJO) over the Indian region. Gridded rainfall data sets are beneficial for regional studies on the hydrological cycle, climate variability and evaluation of regional models. Keeping the above facts in view the present study is aimed to compare the most widely used global high-resolution satellite precipitation product HYDRO-ESTIMATOR (HE daily 0.1degree resolution) with the dense rain gauge network observations and to verify the block level rainfall forecasting. Most of the studies on rainfall were on macro-scale and all India basis. However, not much studies have been made on a micro-scale (block level) for the states in general and Odisha in particular. Hydro Estimator (HE) rain rate at pixel level are estimated at half hourly basis using different algorithms. The daily, weekly and monthly accumulated rain fall for HEM & IMSRA product is also computed and disseminated operationally. The Hydro- Estimator (H-E) is a high spatial and temporal scale rain estimation technique which was initially developed by NOAA for GOES. It is remodeled and applied to INSAT-3D satellite observations. The H-E method operational with INSAT-3D uses Imager thermal 4 infrared observations (at 10.7 μm) along with environmental parameters taken from Numerical Weather Prediction (NWP) model. HE is closer to Actual Rainfall observations (Anil Singh et al 2015).

2. Methodology

2.1. Study Area

Entire Odisha is considered as study area, which is located in the eastern part of India. It comprises of 30 districts and of 314 blocks spreading over an area of 155707 km^2 , and are bounded between 17°49' to 22°31' N latitudes and 81°31' to 87°29' E longitude. The state experiences a tropical climate, characterized by high temperatures, high humidity, medium to high rainfall and short and mild winters. Odisha has been divided into ten agroclimatic zones based on the climate type. The normal rainfall in the state is 1451.2

mm. About 75% to 80% of the total rainfall is received within June to September. The frequent visit of floods, droughts, and cyclones in almost every year in varying intensity registers (480km) coastline that is prone to climate-mediated cyclones and coastal erosion. Odisha as this disaster capital of India because of its longer vulnerable to climate change. Agricultural lands are worst affected by hydro meteorological disaster like extreme rainfall, draught, cyclones, flood, heat waves, cold waves, tsunamis and earthquake.

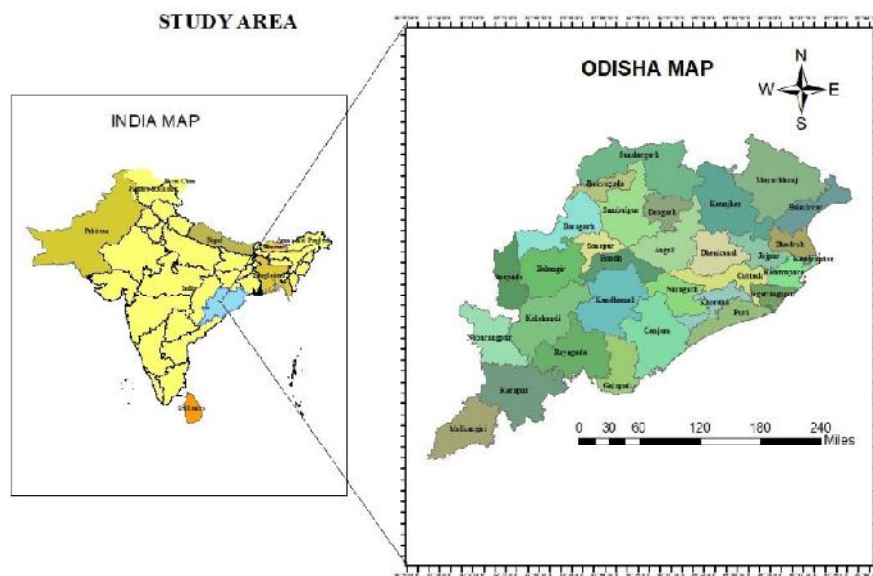


Figure: 1 Map indicating the study area

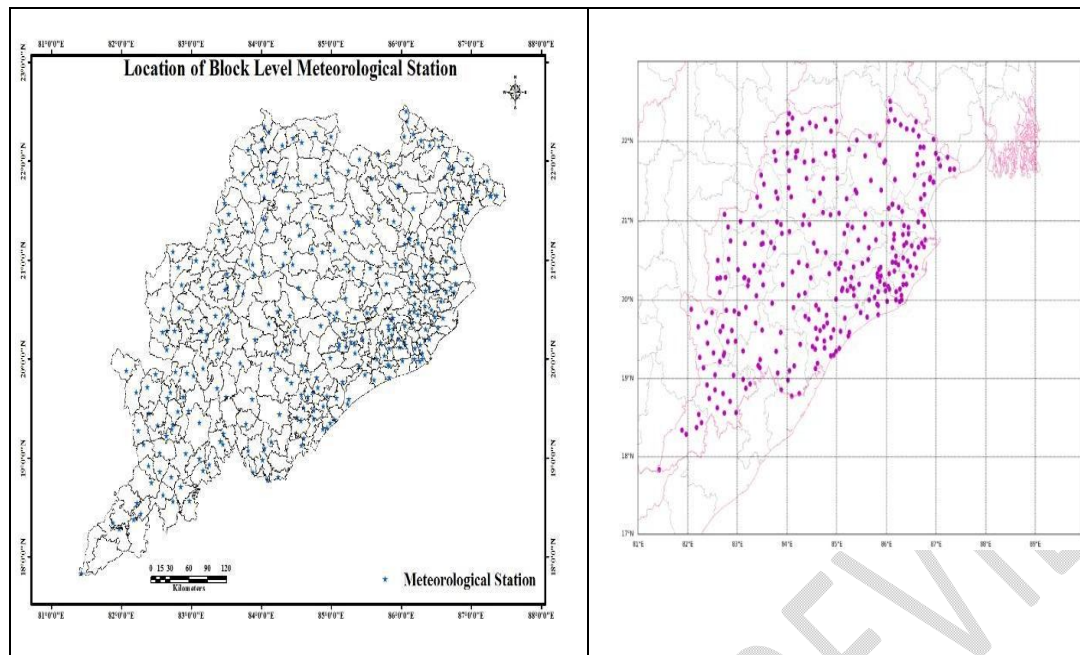


Figure: 2 spatial distributions of all blocks of Odisha state

2.2. Nature and sources of data

The state has 30 districts, which are further divided into 314 revenue blocks. The rainfall data (1 year; 2016) for all the blocks of Odisha has been obtained from Special Relief Commissioner (SRC), Government of Odisha and subjected to further analysis process.

2.3. Data and Model Used

The Hydro-estimator (H.E) provides pixel-scale, half-hourly precipitation rate measurements over land and oceans. The algorithm was develop for the use of H.E based on IR cloud top temperatures, temperature variation and gradients to produce rainfall rate estimates along with NCEP/GFS parameters and an earth elevation model on a half - hourly basis. Rain is estimated dynamically for each pixel using different relationships between convective/ stratus types of cloud. The spatial and temporal resolution of the products are taken in half hourly duration at Pixel level. The dimension of this product is 81° S - 81° N and 3°-163° E, but for this study the daily rainfall estimate accumulated over the Odisha region is used for determining the monthly accumulated rainfall from

MMDRPS, New Delhi. The description of HE algorithm can also found elsewhere in (Kumar and Varma, 2017). The algorithm had undergone major revision in 2015 in order to improve the orographic precipitation and modified algorithm was made operational from mid-August, 2015 (Varma et al., 2017).

2.4. NWP models used for verification of forecasting

The NWP models used in this study are primitive equation spectral global models with state-of-the-art dynamics and physics (Kanamitsu, 1989) that are adopted from the National Centre for Environmental Prediction (NCEP). This GFS model confirmed to a dynamical earth system modelling framework (ESMF) and its code was restructured to exercise many options for the updated dynamics and physics. The physics and dynamics option of the GFS model used in this study at T574L64 resolution is shown in Table 1.

The GFS T574L64 (~ 25 km horizontal over the tropics) suggested by Durai et al. 2011 was implemented at IMD New Delhi in IBM-based high-performance computing systems (HPCS). The GFS T574 model is developed basing on the Eulerian dynamical framework. The assimilation system for GFS T574 is a global three-dimensional variational technique, based on the NCEP grid point statistical interpolation (GSI 3.0.0) scheme (Kleist et al. 2009), which is the next generation of spectral statistical interpolation (SSI). The details about this model are discussed in the study made by Durai and Bhowmik (2014). The GFS-T1534L64 at ~ 12 km in horizontal resolution and in the vertical there are 64 hybrid sigma-pressure layers with the top layer centred around 0.27 hPa (~ 55 km) runs operationally on ADITYA HPCS twice a day (00 and 12 UTC) at Indian Institute of Tropical Meteorology (IITM), Pune since 1st December 2016 to give deterministic forecast in the short to medium range. The initial conditions for the GFS model until 30th June 2016 were generated from the NCEP-based global three-dimensional variational (3D-VAR) Grid point Statistical Interpolation (GSI 3.0.0) scheme and subsequently from 1st July 2016, from the NCEP-based ensemble Kalman filter (EnKF) component of hybrid global data assimilation system (GDAS) run on BHASKARA HPCS at the National Centre for Medium Range Weather Forecasting(NCMRWF).

2.5. Comparison of HE with observation data

For the 2016 monsoon season, HE is brought at 0.1° resolution using a Box averaging interpolation scheme. The daily cumulative rainfall products are used to determine the monthly accumulated rainfall of HE products. Using monthly accumulated rainfall estimate products, IMD subdivision wise rainfall maps and bias map with IMD rainfall gridded/NMSG rainfall dataset are prepared for all these rainfall products individually and statistical analysis is carried out in terms of R^2 and RMSE.

Using these values, scatter plots are generated on a monthly and seasonal basis over the Odisha region. For each rainfall product, a line graph is plotted and the zonal monthly accumulated mean is determined on a sub-divisional basis.

STEPS

1. We recorded INSAT 3D HEM data in geo tiff format.
2. Extraction of the block shape files of Odisha.
3. Masking of extracted shape file with INSAT 3D HEM data.
4. Removal of blocks which do not have HEM data.
5. Zonal statistics are prepared.
6. Figure out the maximum, minimum, mean and standard deviation.

2.6. Verification of block level weather forecasting

In this study, the 3 hourly generated daily 24 h accumulated rainfall forecast (03 UTC of previous day to 03 UTC of forecast valid day) over the Odisha monsoon region from the GFS T574 model at 25 km resolution for 122 days from 1st June to 30th September 2016 were used for the day 1 and day 3 forecasts. The rainfall forecast verified for the 00 UTC model run against daily rainfall observations at the model resolution of 25 km. The daily observed gridded rainfall at 25 km resolution was collected from IMD's National Data Centre (NDC), Pune and which were based on the merged rainfall data i.e. combining gridded rain gauge observations over the land areas and global precipitation measurement (GPM) satellite- estimated rainfall data over the sea areas using a successive correction algorithm (Durai et al. 2010; Mitra et al. 2014). The efficiency GFS at resolution is evaluated for day 1 to day 3 forecasts of rainfall in terms of several accuracy and skill measures.

2.7. Downscaling procedure

Several models with different resolution are used for forecasting various weather parameters for three, four and five days. A 25km resolution GCM(T-574) was used for forecasting of rainfall and cloud quantity for five days and three days forecast was done for other weather parameters by using 9km WRF model. For obtaining the forecast value of any weather parameters the regular grid point. Values are used depending on the distance of the location from the regular grid points. If the location is very near to a grid point the forecast value for the location can be consider as same as the grid point value but when it is away from the regular grid points the four grid points

surrounding the station are considered. To obtain the forecast value at specific location the interpolated value from the four surrounding grid points are used. For validation of the forecasted values verification study was conducted for 278 blocks for which data was readily available leaving aside the rest of the blocks (38) of Odisha state, as the state for these blocks was not available. The skills for rainfall (Yes/No) rainfall are not so good for almost all the blocks and quick value addition for improving the skills of the forecast is required for some of the blocks. The details about the quick value addition and scope for improvement are given in the conclusion part of the paper.

3. Result & Discussion

3.1. Comparison of the most widely used global high-resolution Satellite precipitation product HYDRO-ESTIMATOR in detail with the dense rain gauge network observations.

Here, evaluation and comparison of global high-resolution Satellite precipitation product HYDRO-ESTIMATOR (HE daily 0.1 degree resolution) with dense surface rain gauge network observations for the 249 Blocks of Odisha region for June, July, August, and September of year 2016 are discussed as INSAT 3D HE are not available for rest of blocks.

Table: 1 Quantitative Precipitation Estimate

| Quantitative Precipitation Estimate | | |
|--|---------------------------|----------------------------|
| Product Name | Spatial Resolution | Temporal Resolution |
| Three ThreeDIMG_L2B_HEM | Four km | Thirty minutes |

For the present analysis, it has been used the daily rainfall data archived at the MOSDOC, India Meteorological Department (IMD), Delhi. The INSAT 3D HE data is recorded in geotiff format. We removed blocks which do not have HE data. Zonal statistics are prepared. Then figure out the maximum, minimum, mean and standard deviation. Here only those blocks were included which have higher values of correlations.

3.2 Details about comparison and validation of HE for different blocks

The comparison of INSAT 3D HE rain products with rain gauge observed data has been done

and determined the correlation and RMSE on a daily and monthly basis which are shown in fig 3-14 as a scatter plot. The HE shows good fit results as its average R^2 on a daily basis for different blocks is 0.34 and on a monthly basis it is 0.44. RMSE has also been determined to different block for JJAS month. The average RMSE on daily basis is 17.7 and on monthly basis are 94.6 as it is shown in the table 2.

Here we are discussing some blocks which having comparatively higher scores. Mame of the blocks which have shown a good R^2 on a daily basis are Kaptipada(0.5), Ghasipura (0.54), Basudebpur (0.66), Soro (0.54) and Tihidi (0.53). Some blocks having very good scores as their RMSE is higher (>25),those blocks are Jasipur, Jarigan, Joda, Kakatapur, Koida, Koraput, Kotpada, Kujang, Dashmantapur, Dhankauda, Balikuda, Binjharpur, Cuttuck, Lakshmipur, Lamptapur, Mohana, Nandahandi, Narayanapur, Narayanpatna, Nawarangpur, Aul, Pottangi, Rajkanika, Similiguda. We can say that these blocks having high skills for HE and rain gauge comparison, so INSAT 3D HE rainfall products can be further used without any value addition.

3.3. Verification of block level rainfall forecasting

The NCEP GFS run at IMD is a primitive equation spectral global model with state of art dynamics and physics (Kanamitsu, 1989; Kalnay *et al.*, 1990; Kanamitsu, *et al.*, 1991; Moorthiet *al.*, 2001, Duraiet *al.*, 2010; Sahaet *al.*, 2010). The GFS T574L64 (~25 km horizontal over the tropics), adopted by National Centre for Environmental Prediction (NCEP), was implemented at IMD, New Delhi.

The verification study was carried out for all the blocks for which data was available for 276 blocks and for the remaining, no data at block level could be obtained. The skill for rainfall is not so good for all the blocks. Hence, quick value addition is required for improving the skill of forecast for some of the blocks. Some of the blocks have negative correlation and some of the blocks have a positive correlation for both Day1 and Day 3.

Table 2: Block wise RMSE and correlation on a daily and monthly basis

| S.No | STATION | RMSE-daily | RMSE monthly | R^2 daily | R^2 monthly |
|------|-----------|------------|--------------|-------------|---------------|
| 1 | Angul | 16.43 | 84.13 | 0.01 | 0.22 |
| 2 | Aska | 11.36 | 51 | 0.13 | 0.06 |
| 3 | Astaranga | 21.91 | 116.18 | 0.25 | 0.56 |
| 4 | Athagad | 17.8 | 66.61 | 0.02 | 0.39 |
| 5 | Athmallik | 16.8 | 92.5 | 0.06 | 0.24 |
| 6 | Aul | 27.45 | 112.97 | 0.15 | 0.08 |
| 7 | Attabira | 15.85 | 102.33 | 0.11 | 0.04 |
| 8 | Badachana | 17.31 | 37.38 | 0.22 | 0.58 |
| 9 | Bahalda | 16.27 | 85.7 | 0.09 | 0.01 |
| 10 | Bahanaga | 18.56 | 56.29 | 0.3 | 0.8 |

| | | | | | |
|----|-----------------|-------|--------|------|------|
| 11 | Balangir | 12.84 | 74.14 | 0.21 | 0.51 |
| 12 | Baleswar | 15 | 58.37 | 0.24 | 0.01 |
| 13 | Balianta | 18.01 | 73.21 | 0.24 | 0.78 |
| 14 | Baliapal | 17.99 | 93.92 | 0.11 | 0.06 |
| 15 | Balikuda | 25.5 | 122.69 | 0.1 | 0.27 |
| 16 | Balisankara | 18.91 | 122.25 | 0.14 | 0.98 |
| 17 | Bamra | 15.77 | 91.33 | 0.09 | 0.05 |
| 18 | Banarpal | 14.31 | 68.31 | 0.02 | 0.2 |
| 19 | Bandhugaon | 24.35 | 117.25 | 0.04 | 0.05 |
| 20 | Bangiriposhi | 16.49 | 61.7 | 0.26 | 0.66 |
| 21 | Bangomunda | 11.42 | 110.22 | 0.12 | 0.22 |
| 22 | Banspal | 22.05 | 97.4 | 0.07 | 0.96 |
| 23 | Baragaon | 14.92 | 44.66 | 0.1 | 0.93 |
| 24 | Barang | 19.18 | 69.78 | 0.05 | 0.25 |
| 25 | Bargarh | 15.24 | 77.07 | 0.24 | 0.62 |
| 26 | Baripada | 15.26 | 91.99 | 0.16 | 0.13 |
| 27 | Barkot | 13.05 | 93.19 | 0.13 | 0.16 |
| 28 | Barpali | 13.17 | 43.14 | 0.12 | 0.75 |
| 29 | Barsahi | 12.61 | 42.56 | 0.09 | 0.04 |
| 30 | Basta | 15.69 | 63.26 | 0.16 | 0.05 |
| 31 | Basudebpur | 19.61 | 115.43 | 0.66 | 0.59 |
| 32 | Begunia | 12.15 | 53.01 | 0.02 | 0.04 |
| 33 | Bellaguntha | 10.52 | 63.11 | 0.04 | 0.4 |
| 34 | Belpara | 15.16 | 108.42 | 0.12 | 0.17 |
| 35 | Betanati | 10.27 | 39.1 | 0.28 | 0.7 |
| 36 | Bhadrak | 21.29 | 93.91 | 0.4 | 0.21 |
| 37 | Bhandaripokhari | 24 | 80.62 | 0.22 | 0.76 |
| 38 | Bhanjanagar | 10.99 | 42.24 | 0.19 | 0.63 |
| 39 | Bhatli | 18.09 | 53.72 | 0.22 | 0.11 |
| 40 | Bhawanipatna | 16.02 | 68.85 | 0.02 | 0.03 |
| 41 | Bhograi | 19.3 | 66.26 | 0.09 | 0.2 |
| 42 | Bhubaneswar | 17.94 | 122.37 | 0.07 | 0.48 |
| 43 | Bhuban | 12.68 | 63.45 | 0.11 | 0.04 |
| 44 | Bijatola | 22.27 | 160.85 | 0.11 | 0.29 |
| 45 | Bijepur | 12.45 | 30.57 | 0.09 | 0.79 |
| 46 | Binika | 10.89 | 61.79 | 0.16 | 0.08 |
| 47 | Binjharpur | 25.76 | 101.8 | 0.15 | 0.13 |
| 48 | Biramaharajpur | 12.87 | 97.15 | 0.07 | 0.24 |
| 49 | Biridi | 19.65 | 62.73 | 0.08 | 0.35 |
| 50 | Bisoi | 23.2 | 203.61 | 0.23 | 0.47 |
| 51 | Bisra | 14.19 | 70.59 | 0.07 | 0.07 |

| | | | | | |
|----|-----------------|-------|--------|------|------|
| 52 | Bissam-Cuttack | 15.19 | 80.9 | 0.05 | 0.11 |
| 53 | Boden | 15.76 | 128.49 | 0.19 | 0.41 |
| 54 | Bolagad | 14.7 | 49.27 | 0.01 | 0.16 |
| 55 | Borigumma | 20.84 | 85.69 | 0.19 | 0.71 |
| 56 | Boudh | 13.39 | 82.33 | 0.06 | 0.26 |
| 57 | Bramhagiri | 15.95 | 92.55 | 0.12 | 0.16 |
| 58 | Buguda | 14.41 | 42.35 | 0.06 | 0.01 |
| 59 | Champua | 19.56 | 98.69 | 0.05 | 0.17 |
| 60 | Chandahandi | 17.77 | 80.24 | 0.03 | 0.16 |
| 61 | Chandrapur | 15.45 | 62.22 | 0.03 | 0.18 |
| 62 | Chhatrapur | 15.18 | 99.28 | 0.08 | 0.76 |
| 63 | Chilika | 12.73 | 74.68 | 0.12 | 0.03 |
| 64 | Cuttack-Sadar | 26.59 | 90.5 | 0.02 | 0.02 |
| 65 | Dabugan | 21.55 | 152.5 | 0.23 | 0.3 |
| 66 | Danagadi | 11.5 | 54.59 | 0.46 | 0.94 |
| 67 | Dasamantapur | 28.44 | 143.46 | 0.05 | 0.08 |
| 68 | Dasapalla | 11.5 | 25.65 | 0.1 | 0.22 |
| 69 | Dasarathpur | 22.68 | 99.58 | 0.4 | 0.93 |
| 70 | Delanga | 14.19 | 77.97 | 0.04 | 0.07 |
| 71 | Deogaon | 12.48 | 88.81 | 0.27 | 0.48 |
| 72 | Dhamanagar | 20.36 | 77.56 | 0.34 | 0.59 |
| 73 | Dhankauda | 31.57 | 177.21 | 0.02 | 0.17 |
| 74 | Dharakote | 14.57 | 34.79 | 0.14 | 0.84 |
| 75 | Dharamgarh | 14.37 | 68.54 | 0.12 | 0.38 |
| 76 | Dharmasala | 13.28 | 24.17 | 0.41 | 0.65 |
| 77 | Digapahandi | 18.21 | 53.36 | 0.05 | 0.42 |
| 78 | Dunguripali | 14.86 | 30.96 | 0.04 | 0.7 |
| 79 | Ersama | 24.64 | 75.11 | 0.26 | 0.99 |
| 80 | Gandia | 15.68 | 36.59 | 0.04 | 0.68 |
| 81 | Gania | 10.13 | 36.42 | 0.23 | 0.71 |
| 82 | Ganjam | 13.91 | 102.87 | 0.05 | 0.54 |
| 83 | Ghasipura | 8.25 | 32.63 | 0.54 | 0.8 |
| 84 | Ghatgaon | 10.59 | 56.41 | 0.09 | 0.04 |
| 85 | Golamunda | 13.39 | 90.52 | 0.02 | 0.02 |
| 86 | Gopabandhunagar | 17.76 | 100.7 | 0.08 | 0.07 |
| 87 | Gop | 23.49 | 143.21 | 0.1 | 0.07 |
| 88 | Gudari | 11.57 | 61.28 | 0.04 | 0.35 |
| 89 | Gurundia | 18.47 | 68.27 | 0.24 | 0.3 |
| 90 | Harbhanga | 11.95 | 55.55 | 0.17 | 0.01 |
| 91 | Harichandanpur | 13.08 | 97.3 | 0.18 | 0.2 |
| 92 | Hemgiri | 20.83 | 103.67 | 0.07 | 0.41 |

| | | | | | |
|-----|------------------|-------|--------|------|------|
| 93 | Hindol | 13.96 | 60.13 | 0.01 | 0.07 |
| 94 | Hinjilicut | 15.68 | 62.91 | 0.03 | 0.21 |
| 95 | Jagannathprasad | 12.8 | 42.33 | 0.11 | 0.11 |
| 96 | Jagatsinghapur-p | 19.24 | 86.38 | 0.23 | 0.16 |
| 97 | Jajapur | 22.84 | 128.53 | 0.19 | 0.03 |
| 98 | Jaleswar | 17.34 | 36.13 | 0.06 | 0.16 |
| 99 | Jamda | 12.88 | 38.55 | 0.16 | 0.65 |
| 100 | Jashipur | 25.46 | 168.19 | 0.23 | 0.02 |
| 101 | Jatani | 21.67 | 87.13 | 0.03 | 0.18 |
| 102 | Jayapatna | 17.05 | 108.73 | 0.07 | 0.03 |
| 103 | Jharbandh | 12.87 | 48.01 | 0.31 | 0.26 |
| 104 | Jharigan | 25.03 | 157.15 | 0.01 | 0.03 |
| 105 | Jharsuguda | 14.33 | 51.72 | 0.19 | 0.03 |
| 106 | Jhumpura | 19.87 | 141.06 | 0.17 | 0.27 |
| 107 | Joda | 25.87 | 175.86 | 0.05 | 0.1 |
| 108 | Jujomura | 12.63 | 113.07 | 0.15 | 0.11 |
| 109 | Junagarh | 18.07 | 111.93 | 0.16 | 0.01 |
| 110 | Kabisuryanagar | 15.66 | 83.68 | 0.03 | 0.01 |
| 111 | Kakatpur | 25.77 | 149.17 | 0.08 | 0.25 |
| 112 | Kalampur | 18.65 | 94.96 | 0.06 | 0.54 |
| 113 | Kalimela | 15.79 | 93.42 | 0.04 | 0.48 |
| 114 | Kalyanasingpur | 14.56 | 99.72 | 0.28 | 0 |
| 115 | Kamakhyanagar | 9.94 | 58.7 | 0.17 | 0.37 |
| 116 | Kanas | 15.05 | 60.4 | 0.04 | 0.18 |
| 117 | Kaniha | 6.82 | 35.04 | 0.33 | 1 |
| 118 | Kankadahad | 12.76 | 71.27 | 0.34 | 0.57 |
| 119 | Kantamal | 19.63 | 58.41 | 0.06 | 0.03 |

| | | | | | |
|-----|-------------|-------|--------|------|------|
| 120 | Kantapada | 19.33 | 57.14 | 0.14 | 0.78 |
| 121 | Kaptipada | 9.46 | 47.79 | 0.56 | 0.58 |
| 122 | Karanja | 24.84 | 196.74 | 0.27 | 0.96 |
| 123 | Kashipur | 23.09 | 200.41 | 0.2 | 0.03 |
| 124 | Kendujhar | 17.6 | 118.95 | 0.13 | 0.04 |
| 125 | Khaira | 21.98 | 117.71 | 0.14 | 0.04 |
| 126 | Khairput | 19.85 | 174.25 | 0.14 | 0.03 |
| 127 | Khallikote | 14.42 | 39.96 | 0.09 | 0.29 |
| 128 | Khandapada | 16.72 | 101.68 | 0.03 | 0.83 |
| 129 | Khaprakhhol | 20.03 | 151.24 | 0.05 | 0.01 |
| 130 | Khariar | 16.06 | 95.3 | 0.27 | 0.31 |
| 131 | Khordha | 16.12 | 45.45 | 0.01 | 0.06 |
| 132 | Khunta | 17.52 | 97.31 | 0.09 | 0.03 |

| | | | | | |
|-----|-----------------|-------|--------|------|------|
| 133 | Kishorenagar | 20.66 | 63.18 | 0.01 | 0.23 |
| 134 | Koida | 26.12 | 135.88 | 0.06 | 0.47 |
| 135 | Kokasara | 13.06 | 64.93 | 0.17 | 0.26 |
| 136 | Kolabira | 16.56 | 91.06 | 0.05 | 0.51 |
| 137 | Kolnara | 12.52 | 103.39 | 0.06 | 0.01 |
| 138 | Komna | 19.44 | 159.62 | 0.16 | 0.35 |
| 139 | Koraput | 32.7 | 322.43 | 0.02 | 0.26 |
| 140 | Korei | 19.22 | 46.18 | 0.25 | 0.55 |
| 141 | Kosagumuda | 22.61 | 206.14 | 0.07 | 0.52 |
| 142 | Kotpad | 25.85 | 94.32 | 0.16 | 0.62 |
| 143 | Krushnaprasad | 11.76 | 67.73 | 0.23 | 0.02 |
| 144 | Kuanmunda | 14.24 | 76.97 | 0.08 | 0.62 |
| 145 | Kuchinda | 14.8 | 55.29 | 0.18 | 0.58 |
| 146 | Kujang | 27.78 | 123.11 | 0.11 | 0.21 |
| 147 | Kukudakhandi | 13.59 | 61.98 | 0.07 | 0.35 |
| 148 | Kuliana | 12.7 | 36.32 | 0.16 | 0.96 |
| 149 | Kundra | 21.75 | 157.38 | 0.13 | 0.13 |
| 150 | Kutra | 13.86 | 50.98 | 0.04 | 0.76 |
| 151 | Lahunipara | 17.96 | 77.13 | 0.07 | 0.03 |
| 152 | Laikera | 18.45 | 76.39 | 0.03 | 0.01 |
| 153 | Lakhanpur | 21.89 | 150.41 | 0.14 | 0.68 |
| 154 | Lakshmipur | 34.4 | 227.73 | 0.01 | 0.08 |
| 155 | Lamtaput | 41.91 | 470.93 | 0.06 | 0.04 |
| 156 | Lathikata | 10.43 | 59.1 | 0.27 | 0.28 |
| 157 | Lephripara | 18.84 | 84.92 | 0.04 | 0.28 |
| 158 | Loisinga | 12.88 | 42.31 | 0.14 | 0.6 |
| 159 | Madanpur-Rampur | 19.62 | 32.05 | 0.01 | 0.25 |
| 160 | Mahanga | 22.74 | 67.74 | 0.05 | 0.24 |
| 161 | Malkangiri | 14.97 | 81.93 | 0.22 | 0.18 |
| 162 | Maneswar | 20.59 | 135.14 | 0.12 | 0.06 |
| 163 | Mathili | 19.27 | 107.82 | 0.13 | 0.13 |
| 164 | Mohana | 25.34 | 246.86 | 0.13 | 0.66 |
| 165 | Muniguda | 18.88 | 82.16 | 0.04 | 0.21 |
| 166 | Muribahal | 14.89 | 22.08 | 0.19 | 0.95 |
| 167 | Muruda | 12.17 | 59.71 | 0.3 | 0.65 |
| 168 | Naktideul | 21.38 | 135.41 | 0.01 | 0.04 |
| 169 | Nandahandi | 30.09 | 163.33 | 0.01 | 0.18 |
| 170 | Narayanpatna | 26.84 | 209.91 | 0.19 | 0.2 |
| 171 | Narla | 14.14 | 56.7 | 0.03 | 0.51 |
| 172 | Naugaon | 21.47 | 136.02 | 0.09 | 0.07 |
| 173 | Narasinghpur | 11.74 | 56.31 | 0.22 | 0.02 |

| | | | | | |
|-----|----------------|-------|--------|------|------|
| 174 | Nawarangpur | 26.42 | 144.67 | 0.1 | 0.05 |
| 175 | Nayagarh | 14.19 | 29.33 | 0.04 | 0.09 |
| 176 | Niali | 22.96 | 90.69 | 0.1 | 0.15 |
| 177 | Nilagiri | 16.95 | 127.47 | 0.26 | 0 |
| 178 | Nimapada | 21.23 | 112.98 | 0.03 | 0.11 |
| 179 | Nischintakoili | 16.54 | 70.33 | 0.16 | 0 |
| 180 | Nuapada | 15.92 | 135.29 | 0.12 | 0 |
| 181 | Odapada | 18.77 | 107.87 | 0.01 | 0.02 |
| 182 | Oupada | 13.53 | 53.68 | 0.22 | 0.01 |
| 183 | Padmapur | 14.05 | 79.86 | 0.01 | 0.39 |
| 184 | Paikmal | 14.37 | 71.09 | 0.1 | 0.06 |
| 185 | Palalahada | 13.26 | 68.03 | 0.33 | 0.38 |
| 186 | Paparahandi | 24.2 | 169.01 | 0.02 | 0.27 |
| 187 | Parajang | 15.92 | 62.11 | 0.03 | 0.59 |
| 188 | Patnagarh | 14.53 | 89.88 | 0.13 | 0.14 |
| 189 | Patrapur | 15.04 | 79.88 | 0.04 | 0.5 |
| 190 | Pipili | 17.84 | 109.89 | 0.05 | 0.76 |
| 191 | Podia | 19.88 | 104.61 | 0.01 | 0.66 |
| 192 | Odagaon | 12.81 | 11.13 | 0.06 | 0.84 |
| 193 | Pottangi | 42.75 | 471.63 | 0.11 | 0.68 |
| 194 | Puintala | 14.91 | 84.95 | 0.09 | 0.29 |
| 195 | Puri | 21.29 | 150.28 | 0.1 | 0.39 |
| 196 | Purusottampur | 14.55 | 113.38 | 0.06 | 0.48 |
| 197 | R-Udaygiri | 20.33 | 187.17 | 0.07 | 0.13 |
| 198 | Raghunathpur | 18.83 | 96.8 | 0.17 | 0.04 |
| 199 | Raighar | 18.14 | 140.53 | 0.36 | 0.91 |
| 200 | Rairangpur | 17.88 | 138.53 | 0.14 | 0.55 |
| 201 | Rajkanika | 28.01 | 122.01 | 0.1 | 0.12 |
| 202 | Rajnagar | 36.52 | 130.39 | 0.05 | 0.21 |
| 203 | Ramanguda | 15.47 | 54.27 | 0.13 | 0.45 |
| 204 | Ranapur | 11.72 | 55.45 | 0.08 | 0.06 |
| 205 | Rangeilunda | 11.19 | 70.82 | 0.12 | 0.01 |
| 206 | Raruan | 14.5 | 63.02 | 0.28 | 0.63 |
| 207 | Rasagovindpur | 12.66 | 39.96 | 0.21 | 0.34 |

3.4 The skill scores used for verification study

The standard skill scores are used for rainfall and other weather parameters for verification study (Murphy and Katz, 1985).

Error structure for different variables for rainfall

Parameter **Error structure**

Rainfall if observed r/f is out by

Usable:- $2.5 \text{ mm} < \text{Diff} \leq 5 \text{ mm}$ for $\leq 10 \text{ mm}$ 25% of observed $< \text{Diff} \leq 50\%$ of

Observed for $> 10 \text{ mm}$ Unusable:-

$\text{Diff} > 5 \text{ mm}$, observed for $\leq 10 \text{ mm}$ $\text{Diff} > 50\%$ of observed for $> 10 \text{ mm}$

4. Conclusion

In this study, satellite derived rainfall estimates *viz.*, HEM, were evaluated with rain gauge based gridded data *viz.*, IMD-GRIDDED Dataset for the year 2016 over the Odisha region at the summer monsoon period. The satellite derived rainfall estimates HE have exhibited some good results with the IMD-GRIDDED Dataset its average R^2 on a daily basis for different blocks is 0.34 and on a monthly basis it is 0.44. RMSE has also been determined to different block for JJAS month. The average RMSE on daily basis is 17.7 and on monthly basis is 94.6 as shown in bias maps. HE performs better, especially in hilly terrains like the Western Ghats and NE hilly regions (bias maps). This study has increased the confidence level for HE. The findings of this study will be used for further improvements in respected rain estimate algorithms. The possibility may be explored of using HE rainfall estimated product to generate.

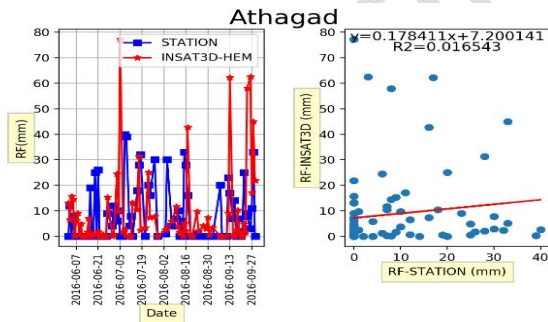


fig 3

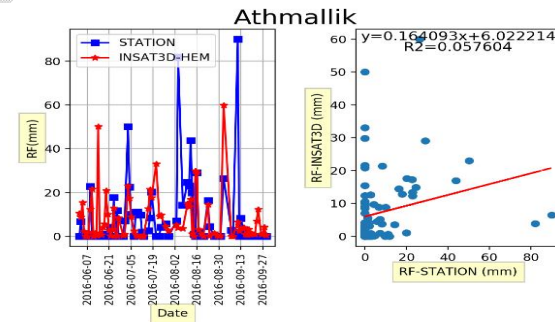


fig 4

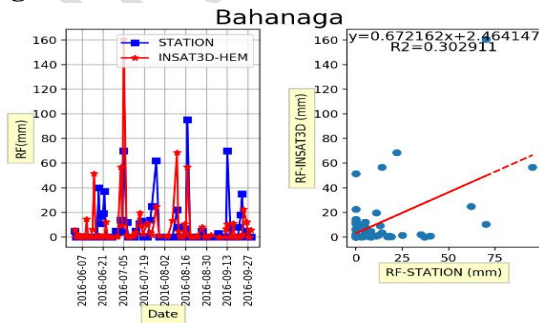


fig 5

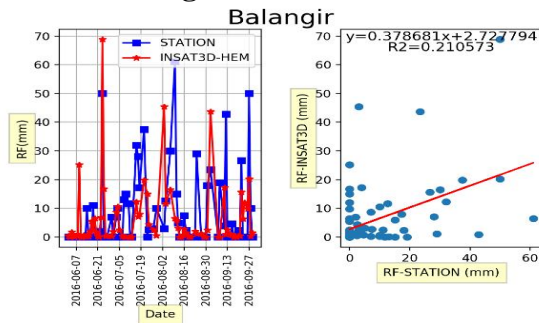


fig 6

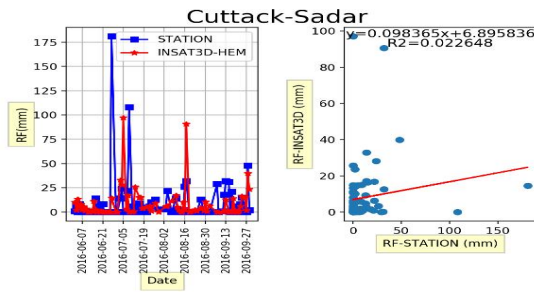


fig 7

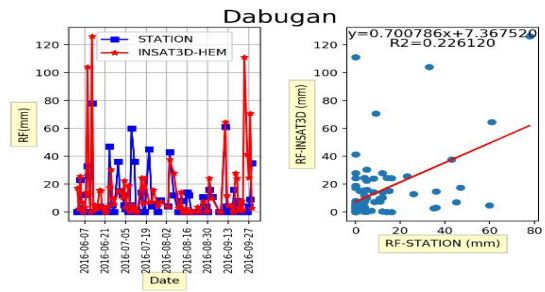


fig8

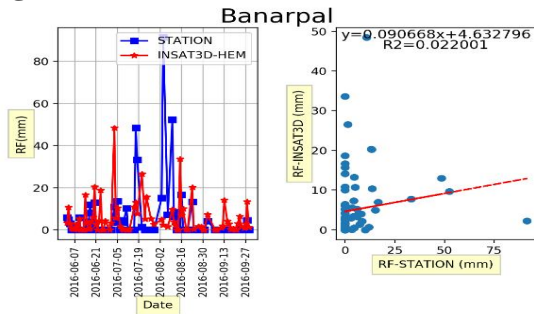


fig 9

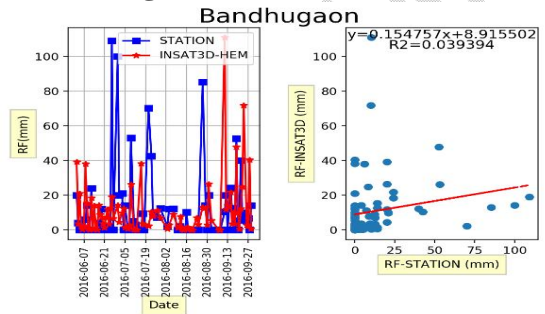


fig10

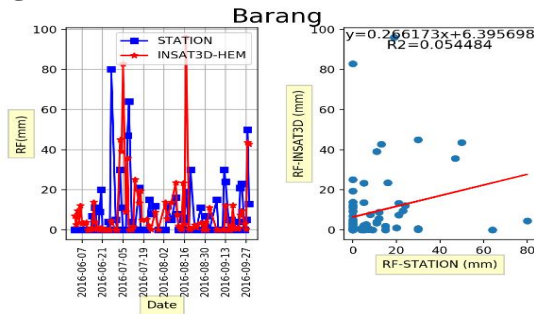


fig 11

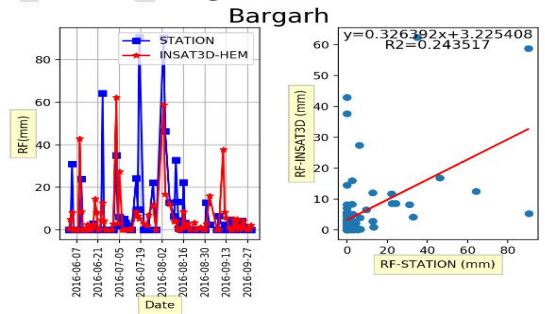


fig12

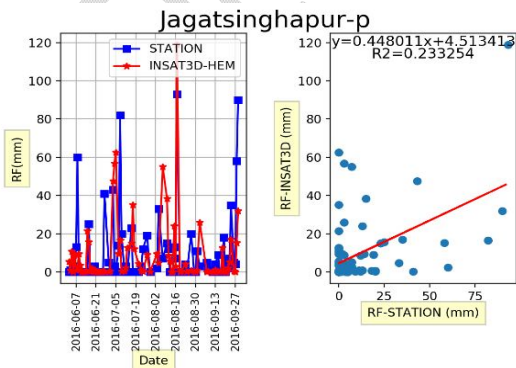


fig 13

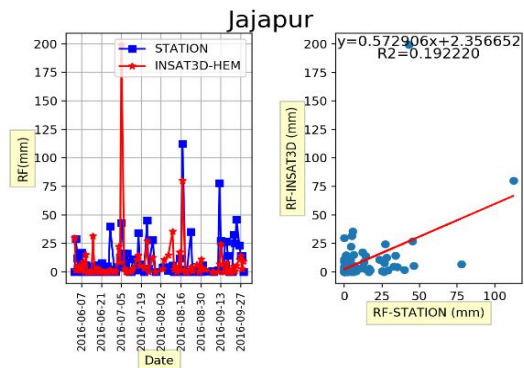


fig14

Figure 3-14: Block level scatter plot designs of some blocks

In the era of high resolution models down scaling the forecast up to any level (*viz.*, district, blocks and village level) is going to give the forecast of almost the same skill. Moreover, the forecasts have become skillful up to day five to seven, of course, with a slight decrease in skill. Hence, forecasts can easily be issued up to day-5.

In our research analysis. it is concluded that the HE rainfall product is good in comparison with station data, but also needs human intervention and value addition to improve skill score. Also, we derived that verification of rainfall forecasting (yes/no aspect) is also good, but it can be better by some quality improvements.

References

1. Adler, RF. Huffman, GJ. Bolvin, DT. Curti, S. Nelkin, EJ. 2000, "Tropical rainfall distributions determined using TRMM combined with other satellite and rain gauge information", *Journal of Applied meteorology*, **39**(12): 2007-2023.
1. Adler, RF. Negri, AJ. Keehn, PR. and Hakkarinen, IM. 1993, "Estimation of monthly rainfall over Japan and surrounding waters from a combination of low-orbit microwave and geosynchronous IR data", *Journal of Applied Meteorology*, **32**(2): 335-356.
2. Ahmad, E. and Hartmann, DL. 1989, "Cloud-radiative forcing and climate: Insights from the Earth Radiation Budget Experiment, *Science*", **243**: 57-63.
3. Arkin, PA. and Meisner, BN. 1987, "The relationship between large-scale convective rainfall and cold clouds over the western hemisphere during 1982-84", *Monthly Weather Review*, **115**(1):51-74.
4. Arkin, PA. Rao, Krishna. And Kelkar, RR. 1989, "Large-scale precipitation and outgoing long wave radiation from INSAT-1B during the 1986 southwest monsoon season", *Journal of climate*, **2**(6): 619-628.
5. Barrett, EC. and Martin, DW. 1981. "Use of satellite data in rainfall monitoring, *Academic press*", **66**(3): 112-128.
6. Behrangi, A. Hsu, KL. Imam, B. Sorooshian, S. and Kuligowski, RJ. 2009. "Evaluating the utility of multispectral information in delineating the areal extent of precipitation", *Journal of Hydrometeorology*, **10**(3): 684-700.
7. Bhandari, SM. and Varma, AK. 1995 "Estimation of large scale monthly rainfall

- over the Indian region using minimal INSAT-VHRR data, *International Journal of Remote Sensing*, **16**(11):2023-2030.
8. Bhowmik, 2013. Quantitative inter-comparisons between GFS T574 and GFS T382 for the Indian region. *Journal of Applied Meteorology*, **50**(8): 954-1168.
 9. Bushair, MT. Kumar, P. 2019. "Evaluation and assimilation of various satellite-derived rainfall products over India. *International Journal of Remote Sensing*" Volume 40, 2019 - Issue 14.
 10. Das, Ananda. K, Bhowmick. M, Roy. Bhowmik, SK. 2010, "Verification of WRF rainfall forecasts over India during monsoon 2010: CRA method", *Geofizika (Croatia)*, **3**:105-126.
 11. Durai, VR. Kotal, SD. 2011 "Performance of global forecast system of IMD during summer monsoon 2011, *Meteorological Monograph*", No. NWP/Annual Report/01/2011,1-41.
 12. Durai, VR. Mitra, AK. 2014. "Global precipitation measurement (GPM) satellite- estimation rainfall data over the sea areas of the Indian region using a successive correction algorithm", *Journal of Hydrometeorology*, **10**(3): 384-459.
 13. Huffman, GJ. Bolvin, DT. Nelkin, EJ. Wolff, DB. Adler, RF. Gu, G. Bowman, KP. Hong, Y. and Stocker, EF. 2007. "The TRMM multi-satellite precipitation analysis (TMPA): Quasi-global, multiyear, combined-sensor precipitation estimates at fine scales", *Journal of hydrometeorology*, **8**(1): 38-55.
 14. Jawanmard, S. (2010). "Comparing high-resolution gridded precipitation data with satellite rainfall estimates of TRMM_3B42 over Iran", *Journal of I. R. of Iran Meteorological Organization (IRIMO), Tehran 14965-114, Iran*, **51**(4) 328-78.
 15. Kale, JD and Lal, B. 2005. "Development of a high resolution daily gridded rainfall data for the Indian region", Met. Monograph Climatology No. 22/2005.
 16. Kalnay, Kanamitsu. and Baker, WE.1990. Global numerical weather prediction at the National Meteorological Center. *Bull. Amer. Meteor. Soc.*, **71**: 1410-1428.
 17. Kar, Sarat. 2012. "Skill of monthly rainfall forecasts over India using multi-

model ensemble schemes, *International Journal of Climatol*”, **18**:37-49.

18. Khadke, C. 2018. “A multi-satellite analysis of deep convection and its moist environment over the Indian Ocean during the winter monsoon”, *Journal of Geophysical Research Atmospheres*, **107**, D19.
19. Kleist, DT. Parrish, DF. Derber, JC. Treadon, R. Wu, WS. Lord, S. 2009.”Introduction of the GSI into the NCEP Global Data Assimilation System”, *Weather Forecasting*, **24**: 1691-1705.
20. Kumar, A. Chattopadhyay, N. 2016. “Block level weather forecast using direct model output from NWP models during the monsoon season in India”. *Mausam*, **68**: 23-40.
21. Kumar, P. and Varma, AK. 2017. “Assimilation of INSAT3D hydroestimator method retrieved rainfall for short range weather prediction”, *Journal of the Royal Meteorological Society*, **143** (702): 384-394.
22. Kumar, Ashok. Maini, Parvinder. Rathore, LS. and Singh, SV. 2000. An operational medium range local weather forecasting system developed in India, *International Journal of Climatol.*, **20**:73-87.
23. Kundu, PK.. 2008. “WRF rainfall forecasts over India during monsoon 2008: *Geofizika*”, **3**: 105-126.
24. Mitra, AK. Bohra, AK, Rajeevan, MN. And Krishnamurti, TN. 2011. “Daily Indian precipitation analysis formed from a merging of rain-gauge data with the TRMM TMPA satellite-derived rainfall estimates”, *Journal of the Meteorological Society of Japan*, **87**: 265-279.
25. Mitra, AK. 2016. “GOES multispectral rainfall algorithm (GMSRA)”, *Journal of Applied Meteorology*, **40**, 8, 1500-1514.
26. Moorthi, DA. Parthasarathy, B. 1984. “Fluctuations in all-India summer monsoon rainfall during 1871–1978”, *Climatic Change*, **6**(3): 287-301.
27. Mukhopadhyay, B. 2010. “Performance Evaluation of precipitation prediction skills of NCEP Global Forecasting System (GFS) over the Indian region during Summer Monsoon 2008”, *Mausam*, **61**(2): 139-154.
28. Osborn, TJ. Hulme, M. 1997. “Development of a Relationship between Station

and Grid- Box Rainday Frequencies for Climate Model Evaluation *bulletin of the climatic research unit*”, UK. **14(3)**:147-201.

29. Parihar, S. and Bhan, SC. 2015. “INSAT 3D vertical profile retrievals at IMDPS”, *Conference paper at mausam* **66(4)**:687-694.
30. Prakash, S. 2016. “Skill of short to medium range monsoon rainfall forecasts from two global models over India for hydro meteorological applications”, *Bulletin of the American Meteorological Society*, **79**, 9, 1883-1898.
31. Rajeevan, M. Bhate, J.Kale, JD. and Lal, B. 2006 “.High resolution daily gridded rainfall data for the Indian region: Analysis of break and activity”, *Current Science*, **91(3)**:23-34.
32. Raossi, M. 2017. “Assessment of the landslide disaster. *Journal of Italian National Research Council Rom, Italy*”, **10**. 1080/45-67
33. Saha, Suranjana. 2010. “The NCEP Climate Forecast System Reanalysis”,
34. *Bull. Amer. Meteor. Soc.*, **91**:1015-1057.
35. Satyanarayana, PK. and Kar, Sarat. 2016. “multi- model ensemble schemes for rainfall forecasts over India”, *International Journal of Climatol.*, **14**:45-56.
36. Shridevi, Ch. Singh, KK. 2019. “Rainfall forecasting skill of GFS model at T1534 and T574 resolution over India during the monsoon season”. *Journal of Meteorologic and atmospheric physics* vol. 121, no. 3-4
37. Singh, V. Singh, AK. Singh, KK. Soni, AK. Sateesh, M. 2018. “A case study: heavy rainfall event comparison between daily satellite rainfall estimation products with IMD gridded rainfall over peninsular India during the 2015 winter monsoon” ,*Journal of the Indian Society of Remote Sensing*, **46(6)**:927-35.
38. John, T. 2013. “Development of gridded surface meteorological data for ecological applications and modeling”.*Journal International Journal of Climatology* DOI: 10.1002/joc.3413.
39. Tripathi, JN. and Kumar, A. 2017. “Hydro-Estimator: Modification and Validation”, SAC/ISRO internal report, Pg27.
40. Verma, A.K. 2017. “Remote sensing of precipitation over ocean and land of Indian region”,*Journal of geophysics research: atmosphere*.**91**, 3.
41. Vicente, GA. Scofield, RA. And Menzel, WP. 1998. “The operational GOES infrared rainfall estimation technique”,*Bulletin of the American Meteorological Society*, **79** (9): 1883-1898.

42. Yamamoto, MK. 2011. "Comparison of Diurnal Variations in Precipitation Systems Observed by TRMM PR, TMI, and VIRS", *Journal of the Center for Environmental Remote Sensing, Chiba University*, 1-33

UNDER PEER REVIEW