

REAL-TIME CONTINGENCY MEASURES AS A SUSTAINABLE STRATEGY FOR MANAGING BIOTIC STRESS IN RICE CROP

ABSTRACT

Rice is grown in 2.0 lakh ha in Srikakulam district of Andhra Pradesh. Unpredictable weather conditions, low socio-economic status of farmers and various nutritional imbalances are the factors affecting the agricultural productivity in rain-fed agriculture in North coastal regions of Andhra Pradesh. Due to the effects of climate change, crops are sometimes affected by floods and sometimes by drought. Under such flooding conditions, biotic stress occurs and involves a large number of fungal, bacterial, viral, nematode and non-parasitic diseases, including blast, sheath blight which are the major biotic stresses and a limiting factors for the rice production. Considering these bottlenecks, KVK, Srikakulam assessed the realtime contingency measures against the biotic stress in rice crop at Kondavalsa and Ponnam villages of Srikakulam district in 2020 and 2021. Results showed, 75 per cent reduction in the incidence of blast among the management measures adopted plots in both the selected locations. But only a 50% reduction was noted in the farmers approach. Similarly, reduction of upto 78% was noticed in PDI of Sheath blight. Also Brown plant hopper population was brought under control by using the management practices. In 2020, the grain yield of Kondavalasa and Ponnam villages in the demo plots were 5521 and 5280 kg/ha at, respectively, while grain yield in farmers practice were 5060 and 4760 kg/, respectively. During 2021, demo plots at Kondavalasa and Ponnamal also, recorded highest grain yields of 5690 and 5850 kg/ha, respectively. The higher severity of diseases like Blast, Sheath blight and pests such as, BPH has lead to poor yields in case of farmers approach. This study clears that adoption of certain measures viz., sowing of tolerant varieties, Seed treatment, Alleyways formation, optimized Nitrozen fertilizer application which promotes the better crop growth and reduce the occurrence of pests and diseases. Additionally, the timely spraying of highly efficient chemicals to control biological stresses such as Blast, Sheath blight and BPH will minimize crop loss and improve grains quality and quantity.

Keywords: BPH, Blast, Sheath blight, Rice, Real time contingency measures, Biotic stress

INTRODUCTION

Rice is the staple food for more than half of the world's population. It is a source of carbohydrates, protein, dietary fiber and minerals. In India, more than 16 million hectares are covered with rainfed lowland rice (Pradhan *et al.*, 2019). Unpredictable weather conditions, low socio-economic status of farmers and various nutritional anomalies are factors affecting agricultural productivity in rain-fed agriculture in North coastal regions of Andhra Pradesh. Rice is grown in an area of 2.0 lakh ha in Srikakulam district of Andhra Pradesh. Climate change remains the greatest challenge facing the world, affecting densely populated countries like India where agricultural production is essential. Irregular rainfall and flooding, intermittent and long-lasting droughts, as well as the appearance of various diseases and pests due to changes in temperature and relative humidity are key factors that reduce crop yields. Such weather anomalies lead to crop vulnerability and risk through the evolution of disease occurrence in crop ecosystems. Due to the effects of climate change, crops are sometimes affected by floods and sometimes by drought. Under such flooding conditions, biotic stress occurs and involves a large number of fungal, bacterial, viral, nematode and non-parasitic diseases, among which blast, sheath blight are the main biotic stresses and a limiting factor for the production rice.

Blast is the deadliest disease, affecting rice crops and destroying around 35% of the harvest. (Kumar and veerabhadraswami, 2014). The blast pathogen is a destructive pathogen that can cause yield losses of 30-61% depending on the stage of infection. The most severe forms are leaf and panicle blasts (Zeigler and Correa, 2000). It is an infectious disease that reduces seed quality and yield (Pasha *et al.*, 2013). Sheath blight was first reported in Japan in 1910 and has since spread worldwide (Singh *et al.*, 2019). Sheath blight is considered the second most destructive disease of temperate and tropical rice, with the potential to cause 25% yield loss (Reddy *et al.*, 2009). In terms of rice pests, the brown plant hopper (*Nilaparvatalugens*), BPH is a major pest that occurs in humid and temperate climates, mainly from panicle germination to grain development stages of rice crop. Widespread outbreaks of *N. lugens* during the rice growing season have been observed in recent years, resulting in massive yield losses. Global climate change is a reality in the current context, and

adverse climate changes are having a positive impact on insect populations, especially phloem-sucking insects like BPH (Chitti babu *et al.*, 2020).

Managing all these biotic stresses is very difficult for farmers and is often confusing in identifying damage from different pests and diseases. Previous research has shown that preventive measures against pests and diseases will reduce damage to seed quality and loss of grain yield. The preventive measures were effective, reducing the incidence of blast and sheath blight and recorded higher yields (Amarajyothi and Chinnam Naidu, 2020). In this context, Krishi Vigyan Kendra of Srikakulam conducted field research on preventive and real-time contingency measures against biotic stress in 2020 and 2021 to inform farmers on preventive measures against pests and diseases.

MATERIALS AND METHODS:

Krishi Vigyan Kendra, Amadalavalasa of Srikakulam district conducted field research on real-time emergency measures to manage biotic stress in paddy fields in Kondavalasa, Sarubujili Mandal and Ponnampeta, Amadalavalasa Mandal, Srikakulam Dist, Andhra Pradesh. These selected villages are more prone to flooding during the heavy rains of the Kharif season, when the paddy fields are completely submerged or partially damaged. Later, diseases such as sheath blight and blast appeared on the crops, which reduced yields and grain quality. Also due to the sudden increase in temperature and population density, BPH has become a threat to farmers. This study evaluates the effectiveness of real-time emergency measures in rice ecosystems to reduce the incidence of blast and sheath blight, BPH population by reducing the cost of crop protection products.

Treatments:

List 1 :Real-time contingency measures or prophylactic measures with farmers approaches.

Realtime Contingency measures / Prophylactic measures	Farmers approaches
<ul style="list-style-type: none"> • Selection of flood tolerant variety (MTU 1061); • Seed treatment with Pseudomonas @ 5g/Kg seed; • Alleyways formation; • Optimized Nitrogen fertilizer application; Spraying of Tricyclazole @ 0.6g/l against leaf blast; 	<ul style="list-style-type: none"> • Variety: Swarna • Non adoption of Seed treatment • Dense population with no alleys • Spraying of Carbendazim + Mancozeb @ 3g/l

<ul style="list-style-type: none"> • Spraying of Trifloxystrobin + Tebuconazole 75 WG @ 0.4g/l against Sheath blight; • Spraying of Dinotefuran 20% SG@ 0.5g/l against BPH. 	<ul style="list-style-type: none"> • Spraying of Hexaconazole @ 2ml/l • Spraying of Acephate @ 2g/l
-----------------------------------------------------------------------------------------------------------------------------------------------------------------------------------------------------	-----------------------------------------------------------------------------------------------------------------------------

At each location/village five farmers were selected and implemented the treatments. Data collected on per cent disease incidence using the formula

$$\text{Per cent Disease Incidence (PDI)} = \frac{\text{No. of leaves infected}}{\text{Total No. of leaves examined}} \times 100$$

BPH population was recorded randomly on five hills per each sq.m and collected on five sq.m randomly in one acre field. Collected rainfall, temperature and other weather parameters data pertaining to the crop period and correlated. Further, data on yield parameters were collected and analyzed. Benefit Cost Ratio (B:C) was calculated using the cost of cultivation (including all the test chemicals) and product market price.

RESULTS AND DISCUSSION:

Disease management in Paddy:

This study showed that the incidence of diseases such as blast and sheath blight was high due to high relative humidity during monsoons, while the BPH population was increased after floods due to sudden increase in temperature and humidity in the crop microclimate. Blast disease was noticed in the tillering stage of the crop during August – September. In Kondavalasa village, the incidence of blast disease was 27.2 and 25.5 per cent in 2020 and 2021, respectively which was reduced by 70.2 and 76.8 per cent immediately after one spraying of Tricyclazole @ 0.6g/l. In the farmers approach, the disease reduction in Kondavalasa village was 56.7 and 45.2 per cent in 2020 and 2021, respectively (Table 1). In the other location, Ponnampalayam village the blast incidence was decreased to 68 and 74.6 per cent during 2020 and 2021, respectively in demonstrated plots. Whereas, in the farmers approach, disease reduction was below 50 per cent. Immediate spraying of effective chemicals has brought down the disease severity and crop loss. Sood and Kapoor, 1997 also proved Tricyclazole was found to be the most effective, reducing leaf blast and neck blast by 89.2% and 94.5%, respectively and increasing the yield by 43.3% to the untreated control. Tricyclazole being systemic natured, prophylactic spray safeguards plants from infection by preventing the entry of the fungus into the epidermis (Amarajyothi and Chinnamaidu, 2020).

Table 1: PDI of Blast in rice at Kondavalasa, Ponnamm villages during Kharif 2020 and 2021

Village	Demo (% DI)		% Decrease	Farmers approach		% Decrease
	Pre	Post		Pre	Post	
Kharif, 2020						
Kondavalasa	27.2	8.2	70.2	28.0	12.1	56.7
Ponnamm	35.0	11.2	68.0	35.0	16.8	52.0
Kharif, 2021						
Kondavalasa	25.5	5.9	76.8	25.2	13.8	45.2
Ponnamm	30.5	7.2	74.6	31.8	15.6	50.0

Sheath blight incidence was noticed during the late vegetative/ tillering stage at both the selected locations. Disease incidence was 25.0 and 32.5 per cent in 2020 and 2021, respectively at Kondavalasa village. Spraying of Trifloxystrobin + Tebuconazole @ 0.4 g/l was highly effective against the sheath blight pathogen and reduced the disease incidence to 74.0 and 76.0 per cent in 2020 and 2021, respectively (Table 2). In the farmer approach, (spraying of Hexaconazole @ 2ml/l) the disease reduced upto 61.4 per cent in 2020 and 62.2 per cent in 2021. This is in line with the previous studies conducted several research workers. New combination of chemical belongs to strobilurin group, Trifloxystrobin + Tebuconazole has recorded the lowest PDI of blast and sheath blight compared to untreated control (Prameshet *et al.*, 2016; Kumar and Veerabhadraswamy 2014; Bag *et al.*, 2016).

Table 2: PDI of Sheath blight in rice at Kondavalasa, Ponnamm villages during Kharif 2020 and 2021

Village	Demo (% DI)		% Decrease	Farmers approach		% Decrease
	Pre	Post		Pre	Post	
Kharif 2020						
Kondavalasa	24.4	4.8	80.3	34.2	10.8	68.4
Ponnamm	26.2	5.5	79.0	38.4	12.4	67.7
Kharif, 2021						
Kondavalasa	28.4	7.2	75.0	30.5	11.5	62.2
Ponnamm	26.9	5.6	79.1	32.5	13.0	60.0

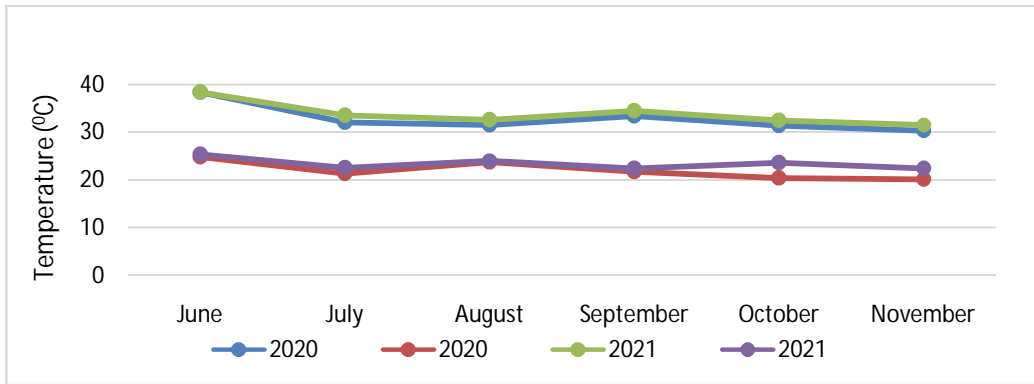


Fig 1: Temperature recoded during 2020 and 2021 in Kondavalasa village of Sarubujjili

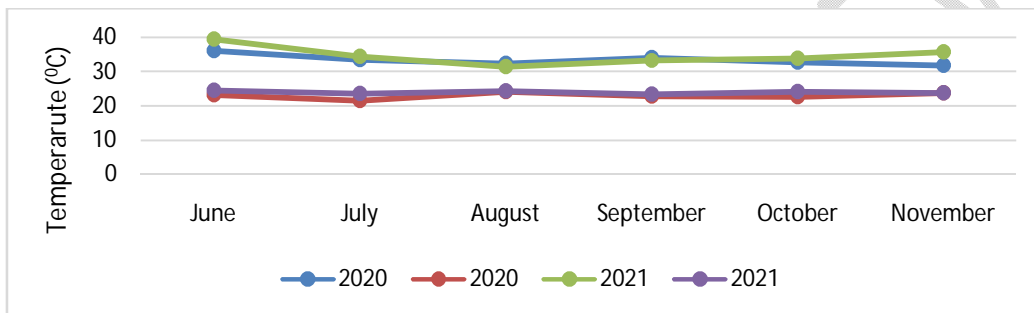


Fig 2: Temperature recoded during 2020 and 2021 in Ponnamm village of Amadalavalsa

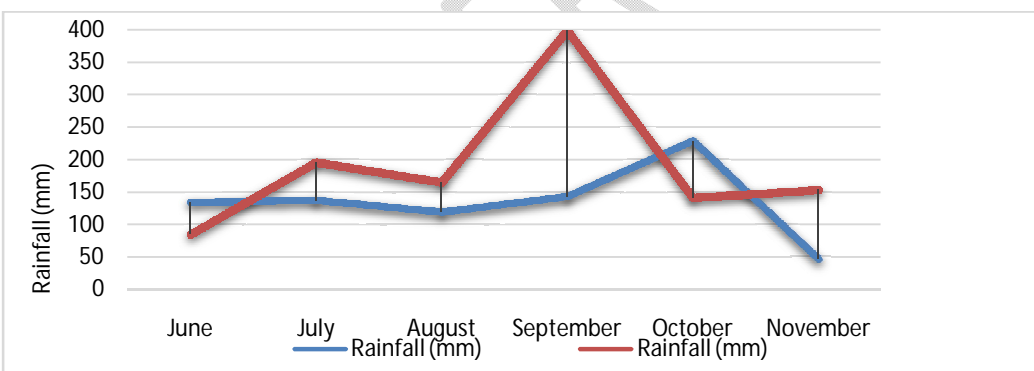


Fig 3: Rainfall received during 2020 and 2021 in Kondavalasa village of Sarubujjili

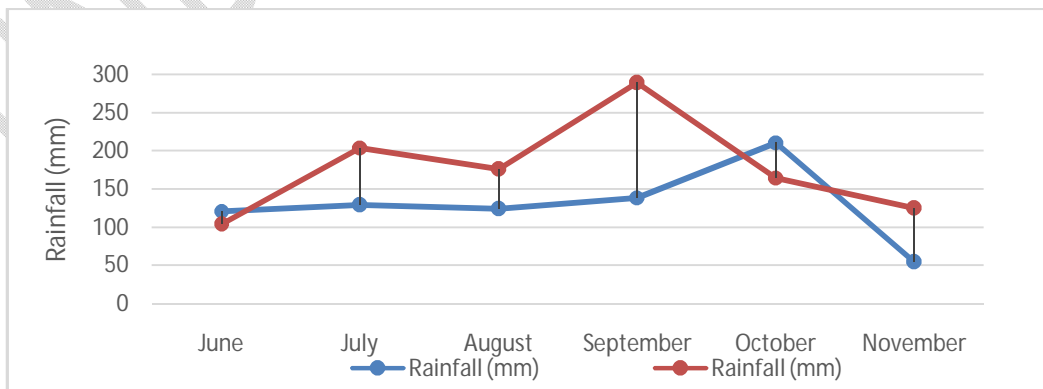


Fig 4: Rainfall received during 2020 and 2021 in Ponnamm village of Amadalavalsa

Integrated management practices against diseases:

Seed treatment with pseudomonas decreases the blast incidence in the early stage of the crop and recorded lowest disease intensity in the present study. When the formulation was applied as a seed treatment, the bacteria established well in the rice rhizosphere and protects from the fungal growth. Earlier **Vidyasekharan and Muthamilan, 1999** also confirmed that the effective control of rice sheath blight was obtained when the powder formulation was applied to seed. Rice variety MTU 1061 which has tolerance to diseases like blast and sheath blight was selected in this study and was recorded lowest PDI of blast and sheath blight compared to the wide spread variety MTU 7029 used in the Srikakulam district. The variety has played a major role in the decreased spread of disease among the crop. Also optimized nitrogen application reduced the intensity of the diseases which regulated the loss to the crop. Leaf blast was significantly more severe on the susceptible and very susceptible cultivars when N fertilizer was applied as a single application at pre-flood than in the split application treatment (Long *et al.*, 2000).

Management of BPH population:

BPH population was noticed in the paddy crop during the later stages of the crop. Table 3 indicted that, the BPH population was reduced to 82.0 and 85.2 per cent in Kondavalsa and Ponnam villages, respectively during 2020 in the IPM adopted fields. Whereas in the farmers approach, the BPH population was high and reduced only 71.6 and 72.5 per cent in Kondavalasa and Ponnam villages. Due to high humidity in the micro climate. In 2021 also same trend was noticed. The BPH population was reduced to 82.7 and 81.0 per cent in Kondavalasa and Ponnam villages, respectively. Only 71.8 and 68.3 percent reduction in BPH population was recorded in case of farmers approach in Kondavalsa and Ponnam villages, respectively. This study reveals that, the higher temperature and high humidity due to the immediate floods in paddy fields, favours the BPH population. The same was explained by the earlier researchers. Sarkar *et al.* (2018) who found that the population of BPH was significantly influenced by the weather parameters in particular, temperature and relative humidity. Chaudhary *et al.* (2014) reported the similar results that, temperature was positively correlated with BPH population. Krishnaiah *et al.* (2006) also reported a positive correlation between BPH populations with temperature.

The present study also revealed that, timely management of BPH can reduce the damage per cent in production in rice. Optimized 'N' fertilizer and creation of alley ways has played a major role in decreasing the pest population. Also spraying of effective chemical, Dinotefuran 20% SG @ 0.5g/l has completely kept BPH population under control. Similarly, Huraliet. *al.* 2020 also indorsed Dinotefuran 70% WG was superior in suppressing the BPH population in Rice. Sarao and Randhwa, 2019 also revealed that BPH population was reduced by Dinotefuran 20% SGand recorded higher yields in paddy.

Table 3: BPH population in rice at Kondavalasa, Ponnam villages during Kharif 2020 and 2021

Village	Demo		% Decrease	Farmers approach		% Decrease
	Pre	Post		Pre	Post	
Kharif, 2020						
Kondavalasa	63.4±1.74	11.4±1.08	82.0	65.6±1.93	18.6±0.77	71.6
Ponnam	70.2 ±1. 9	10.2±0.63	85.2	70.6±1.18	19.4±0.66	72.5
Kharif, 2021						
Kondavalasa	56.6±1.61	9.8±0.76	82.7	54.6±1.90	15.4±0.91	71.8
Ponnam	49.4±1.45	10.4±0.45	81.0	51.8±1.33	16.6±0.72	68.3

Yield attributes:

Results indicated that, the higher grain yields were recorded in the timely management practices adopted fields compared to the farmers approach. In 2020, the grain yield recorded was 5521 and 5280 kg/ha at Kondavalasa and Ponnam villages, respectively in the demo plots compared to 5060 and 4760 kg/ha in the farmers practices. Nearly 10 percent in the yield was noticed in the demo plots compared to the farmers approach. The higher severity of diseases like Blast, Sheath blight and BPH has lead to poor yields in case of farmers approach. Similarly in 2021 also the same results were obtained. The highest grain yield was recorded in the demo plots, 5690 and 5850 kg/ha in Kodavalasa and Ponnam villages, respectively. An average of Rs.8500/- increase in the net income was noticed at both the villages. This proved that timely adoption of management practices against pest diseases can reduce the risk of crop loss and increases the net returns for the farmers. Similar results were demonstrated by Katsubeet *al.*(1970) who advocated that there was 6 per cent yield reduction for every 10 per cent blast incidence and 5 percent increase in chalky kernals, which lowered the rice quality. Amarajyothi and Chinnamnaidu, 2020 also stated that, decline in quality and quantity was strongly correlated with

disease occurrence, suggesting that real time protective measures should be implemented to limit the yield loss and spread of disease, particularly rice grown in flood-prone area.

Table 4: Economics parameters recorded in rice crop

Treatments	2020				2021			
	Grain yield (kg/ha)	Cost of cultivation (Rs/ha)	Net income (Rs/ha)	B:C ratio	Grain yield (kg/ha)	Cost of cultivation (Rs/ha)	Net income (Rs/ha)	B:C ratio
Kondavalasa village								
Demo	5580	52625	51163	1: 1.97	5630	53200	56022	1:2.05
Farmers practice	5090	51200	43474	1: 1.84	5060	50875	47289	1:1.92
Ponnam village								
Demo	5690	52705	53129	1: 2.00	5850	54625	58865	1:2.07
Farmers practice	5210	52100	44806	1: 1.86	5330	52438	50965	1:1.97

Conclusions:

Rice crop grown in low lying areas always experience frequent flooding, triggers severe outbreak of diseases like blast and sheath blight. In such cases the yield and quality of grain will decrease and yields poor returns to the farmers. This study clears that adoption of certain measures viz., sowing of tolerant varieties, Seed treatment, Alleyways formation, optimized Nitrogen fertilizer application which promotes the better crop growth and reduce the occurrence of pests and diseases. Additionally the timely spraying of highly efficient chemicals to control biotic stress like Blast, Sheath blight and BPH will minimize crop loss and increase quality and quantity of grains. The higher yields will give more returns to the farmers, thereby improving socio economic status of the farmers will be improved. Therefore, real time protective measures should be implemented to limit the yield loss and disease spread, especially for rice grown in flood-prone area.

REFERENCES:

1. Amarajyoti P and Chinnam Naidu D 2020. Sustainable Strategy for Managing Blast and Sheath Blight in flood prone Rice. J Krishi Vigyan 2020, 9 (1) : 298-301

2. Bag M K.,Yadav M and Mukherjee A K 2016. Bioefficacy of Strobilurin Based Fungicides against Rice Sheath Blight Disease. Transcriptomics: Open Access, 04(01).<https://doi.org/10.4172/2329-8936.1000128>
3. Chaudhary S, Raghuraman M, Kumar H. Seasonal abundance of brown plant hopper *Nilaparvatalugens* in Varanasi region India. International Journal of Current Microbiology and Applied Sciences. 2014; 3(7):1014- 1017.
4. Chitti Babu G, Chinnam Naidu D, Venkata Rao P and Raj Kumar N 2020 Impact of climate change on brown plant hopper, *Nilaparvatalugens* (Stal) incidence and management in rice eco system in Srikakulam district of Andhra Pradesh. Journal of Entomology and Zoology Studies. 8(4): 1102-1105.
5. Hurali S, Ravi B, Vinoda, Gowda SB, Masthanreddy BG, Mahantashivayogayya H and Pramesh D 2020. Field performance of a new formulation of dinotefuran 70% WG against sucking pests of paddy Journal of Entomology and Zoology Studies 2020; 8(1): 1011-1015.
6. Katsube T and KoshimizuY . Influence of blast disease on harvest of rice plants. Effect of panicle infection on yield components and quality. Bulletin of Tohoku Agricultural Experiment Station. 1970; 39:55-96
7. Kindo D and Tiwari PK. Efficacy of fungicides for management of sheath rot disease in rice under field conditions. *Plant Archives*.2015; 15(1):119-120.
8. Krishnaiah NV, Prasad ASR, Rao CR, Pasalu IC, Zaheruddeen SM, Varma NRG. Population dynamics of rice brown plant hopper, *Nilaparvatalugens* in Godavari Delta of Andhra Pradesh State. Indian Journal of Plant Protection. 2006; 34(2):158-164.
9. Krishnam Raju S, Kumar KVK and Raju MR. Efficacy of tebuconazole against *Rhizoctoniasolani*, causal agent of rice sheath blight. Indian Journal of Plant Protection. 2008; 36 (1): 98-101.
10. Kumar PMK and Veerabhadraswamy AL. Appraise a combination of fungicides against blast and sheath blight diseases of paddy (*Oryza sativa* L.). Journal of Experimental Biology and Agricultural Sciences. 2014; 2(1):49-57.
11. Kumar, MK Prasanna, DK SiddeGowda, RishikantMoudgal, N. Kiran Kumar, KT PandurangeGowda, and K. Vishwanath. "Impact of fungicides on rice production in India." *Fungicides-showcases of integrated plant disease management from around the world* (2013).
12. Long, D. H., Lee, F. N., and TeBeest, D. O. 2000. Effect of nitrogen fertilization on disease progress of rice blast on susceptible and resistant cultivars. *Plant Dis*. 84:403-409.
13. Naik RG, Jayalakshmi K and Naik TB. Efficacy of fungicides on the management of sheath blight of rice. International Journal of Current Microbiol. Applied Science. 2017 ;6(9): 611-614.

14. Pasha A, Jelodar NB, Nadali B, Gorbanali N. Identification of rice genotypes resistant to panicle blast. *International Journal of Agricultural Crop Science*. 2013; 5: 1346-1350
15. Peterson LG. (1990) Tricyclazole for Control of *Pyriculariaoryzae* on Rice: The Relationship of the Mode of Action and Disease Occurrence and Development. In: Grayson B.T., Green M.B., Copping L.G. (eds) *Pest Management in Rice*. Springer, Dordrecht.
16. Pradhan SK, Pandit E, Mohanty SP 2019. Development of flash-flood tolerant and durable bacterial blight resistant versions of mega rice variety 'Swarna' through marker-assisted backcross breeding. *Scientific Reports*. 2019. 9: 12810
17. Pramesh Maruti D, Saddamhusen A, Muniraju AKM, Guruprasad GS 2017. A New Combination Fungicide Active Ingredients for Management of Sheath Blight Disease of Paddy 8:1-7.
18. Reddy BPR, Reddy KRN and Rao KS. Sheath blight disease of oryza sativa and its management by biocontrol and chemical control in vitro. *Electronic Journal of Environmental, Agricultural and Food Chemistry*. 2009; 8(8): 639- 646.
19. Sarao P S and Randhwa H S 2019. Efficacy of Dinotefuran 20 % SG against major plant hoppers of Rice. *Indian Journal of Entomology*, 81 (2): 312-316.
20. Sarkar DA, Baliarsingh, Mishra HP, Nanda A, Panigrahi G, Mohapatra AKB et al. Population dynamics of brown plant hopper of paddy and its correlation with weather parameters. *International Journal of Chemical Studies*. 2018; 6(6):920-923
21. Singh P, Mazumdar P, Harikrishna J A and Babu S 2019 Sheath blight of rice: a review and identification of properties for future research. *Planta* 250, 1387-1407.
22. Sood G.K. and Kapoor A.S. 1997. Efficacy of new fungicides in the management of rice blast. *Plant Dis. Res.*, 12: 140 - 142.
23. Srivastava R, Srivastava KK, Sarkar JD and Srivastava P. Analysis of problems faced by farmers in adoption of control measures of diseases of rice. *Journal of inter academacia*. 2010.14(2): 260-266.
24. Vidhyasekaran, P. and Muthamilan, M. 1999. Evaluation of powder formulation of *Pseudomonas fluorescens* Pf1 for control of rice sheath blight. *Bio-control Sci. and Technol.*, 9(1): 67-74.
25. Zeigler, R.S. and Correa, F.J. 2000. Applying Magnaporthe grisea population analyses for durable rice blast resistance. 2000. APSnet Features. Online. doi: 10.1094/APSnetFeature-2000-0700A Retrieved on <http://www.apsnet.org/publications/apsnetfeatures/pages/applyingMagnaporthe.aspx> last 8-31-2011.