

## Original Research Article

# Influence of *Parkia biglobosa* (Jacq.) R. Br. Ex G. Don on the herbaceous vegetation in the Katouré valley of the commune of Nyassia (BasseCasamance-Senegal)

## ABSTRACT

**Aims:** Trees outside of protected areas play an important role in providing ecosystem services. They participate in the development of the mat by creating favorable conditions for the development of grasses. The influence of trees on the development and distribution of grasses is not well known. It is in this sense that this study was conducted to determine the effect of *Parkia biglobosa* cover on the composition, diversity, structure and spatial distribution of herbaceous vegetation.

**Place and Duration of Study:** The study was carried out in the commune of Nyassia in Lower Casamance on a site identified as a *Parkiabiglobosa* park in the Katouré valley in August 2021.

**Methodology:** Floristic surveys were conducted under (R, R/2, R and 2R) and outside the control tree canopy.

**Results:** It was found that the number of species under the tree canopy ranged from 13 to 16 species and was greater than that observed outside the canopy (6 species). Species such as *Brachariadeflexa*, *Cyperusesculentus*, *Echinochloacolona*, *Indigoferaheudelotii* and *Pentodon pentandrus* were the most frequently encountered in the surveys under the tree canopy (0R, R/2 and R). In contrast, *Andropogongayanus* and *Bulbostyliscapillaris* were the most abundant species in the noncanopy surveys. The canopy cover of *P. biglobosa*, which ranged from  $70 \pm 17.6$  (2R) to  $83 \pm 19.4$  (R/2), was higher than in the uncovered level ( $54 \pm 15.4$ ). Diversity analysis revealed that the canopy surveys 0R ( $0.80 \pm 0.06$ ), R/2 ( $0.81 \pm 0.04$ ) and R ( $0.77 \pm 0.06$ ) were the most diverse.

**Conclusion:** The presence of *Parkia biglobosa* influenced the presence of herbaceous species and improved habitat conditions.

*Keywords: Parkia biglobosa, herbaceous, richness, diversity*

## 1. INTRODUCTION

Woody species outside the forest play a very important role in the proper functioning of agrarian and pastoral landscapes in sub-Saharan Africa and in Senegal in particular [1, 2, 3]. They provide multiple agronomic services by improving soil fertility and stability, and socioeconomic services by improving income and living conditions in rural areas, [4,5]. From an environmental point of view, these woody plants outside the forest also promote the restoration and conservation of herbaceous vegetation, which plays an important role in the supply (fodder and medicine) and proper functioning of ecosystems [5,6]. This herbaceous

vegetation also provides a reservoir of novel and useful genes, and a considerable source of new diversity [7,8]. Despite their importance, these ecosystems are experiencing increasing degradation due to a variety of factors such as agricultural clearing, overexploitation of woody plants, and climate change [9, 10, 11]. This strong degradation results in a strong decrease in the diversity of woody species and a modification of the floristic composition of the herbaceous stratum becoming more fragile and very threatened [12,13]. Faced with these threats, various action plans associated with agricultural production are increasingly undertaken, particularly through the promotion of the advantages of agroforestry systems [14, 15, 16]. Thus, several research and development activities have been undertaken to determine the contribution of woody species to the improvement of agricultural production through their contribution to soil fertility and stability [17, 18, 19, 20, 21].

As with research conducted on non-forest species associated with agricultural production, little effort has been directed toward studying the influence of woody species on the phenology, productivity, and quality of herbaceous vegetation in a habitat [22, 23, 24]. The objective of our study is to determine the effect of *Parkia biglobosa* cover on the diversity, frequency and cover of herbaceous flora in the valley zone.

## **2. MATERIAL AND METHODS**

### **2.1 Study site**

The study was conducted in the commune of Nyassia in Lower Casamance (Fig. 1) at a site identified as a *Parkia biglobosa* park in the Katouré valley (Fig. 2). This area is characterized by a coastal South Sudanese climate that is essentially dominated by two seasons: a dry season from October to May and a rainy season from June to mid-October [25]. The average annual rainfall is estimated at about 1200 mm and the average temperature is 27°C[25]. The vegetation encountered is essentially open forest and savannah with trees and shrubs[26].

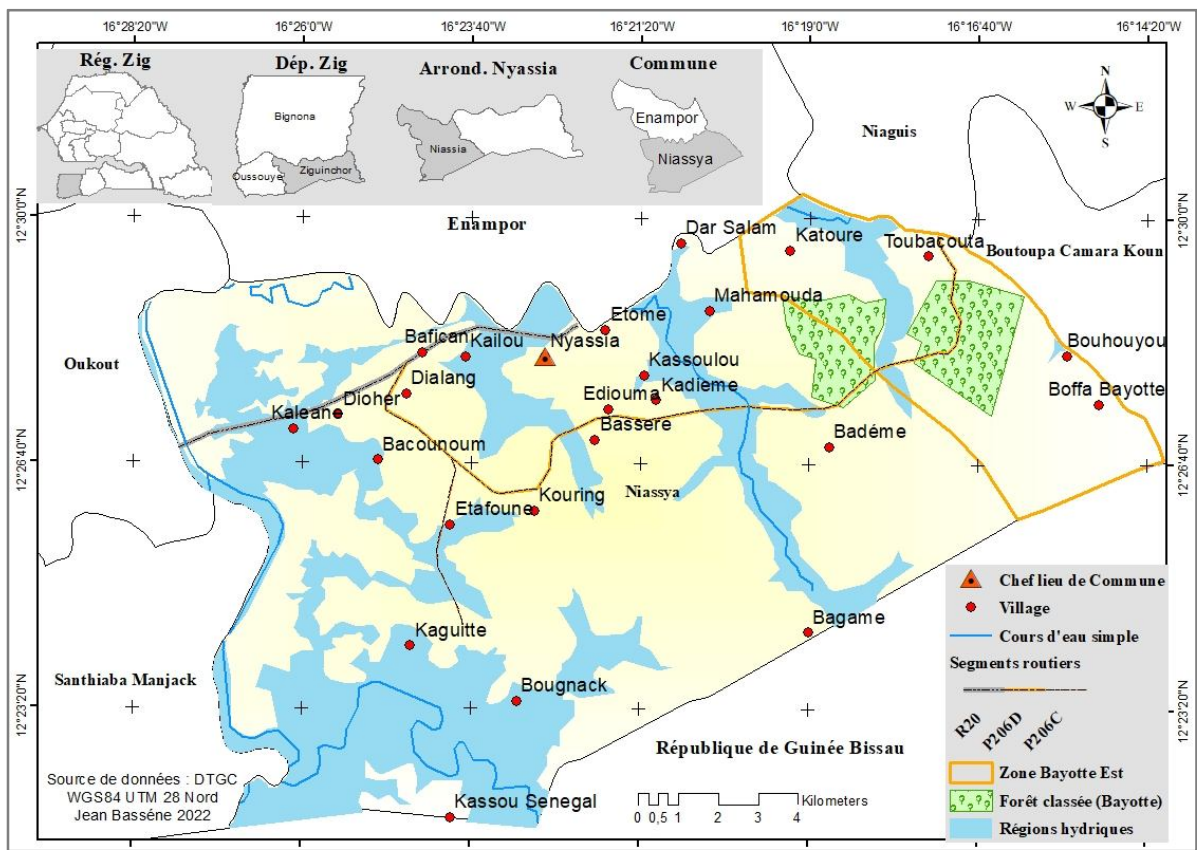
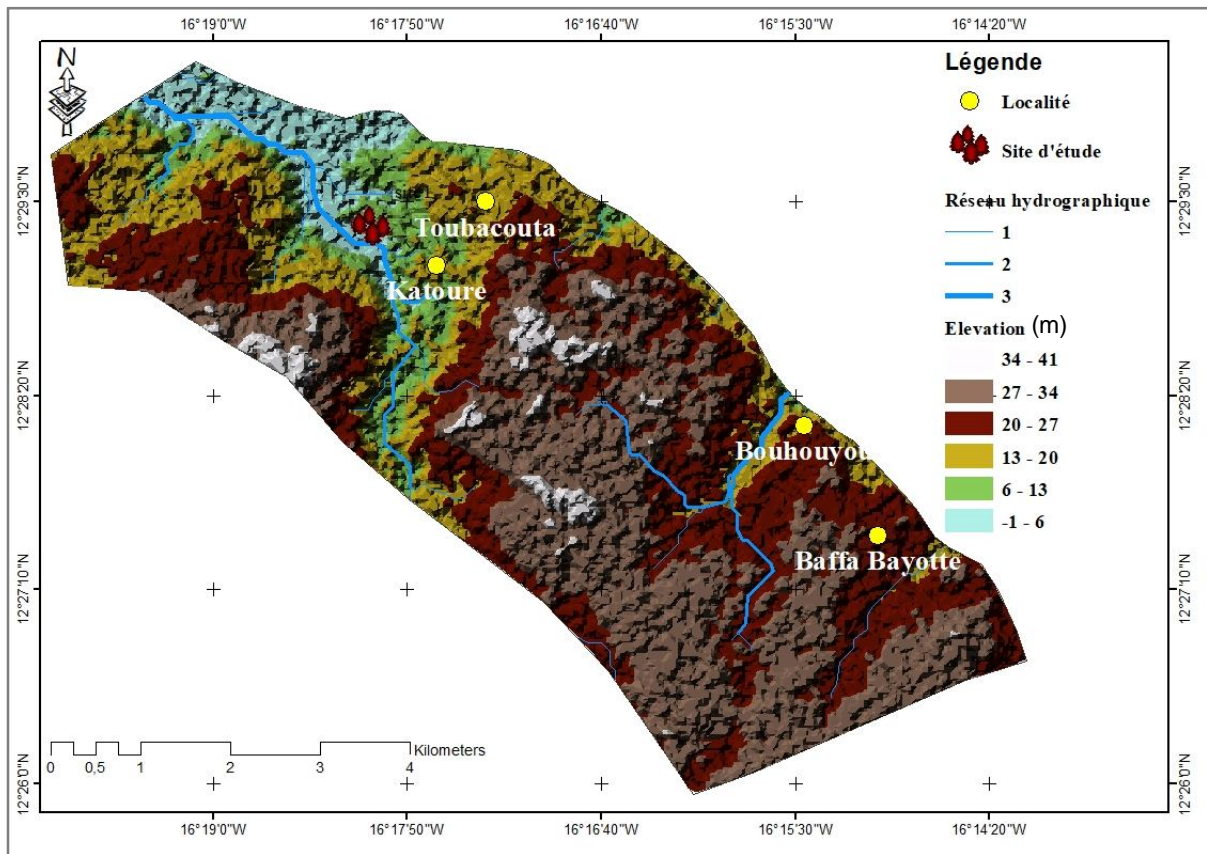


Fig. 1. Location of the study area

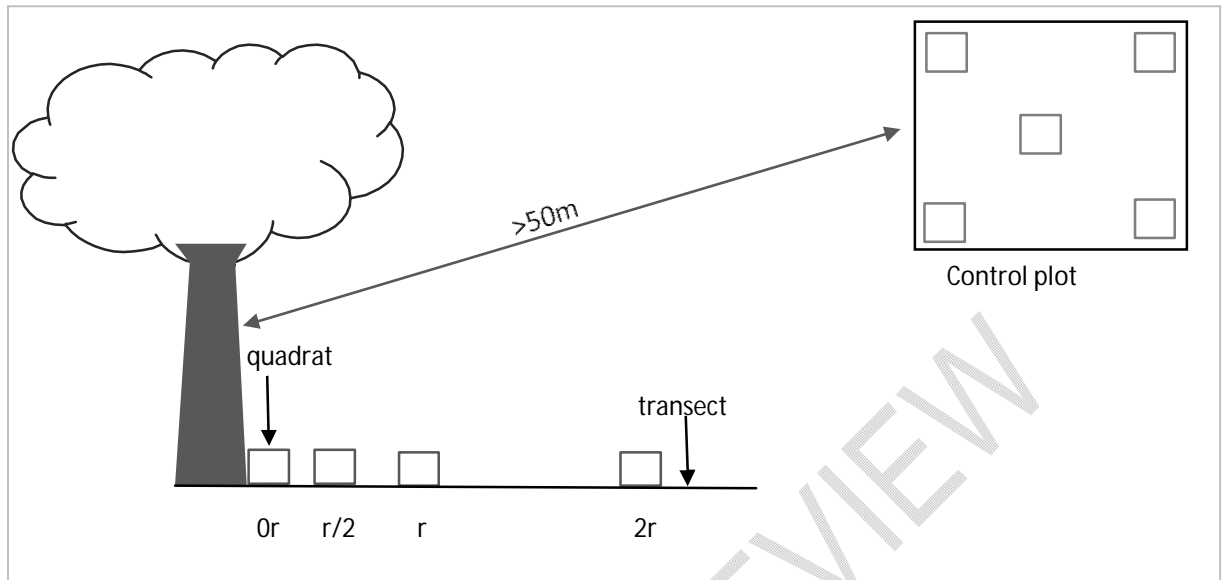
UNDER REVIEW



**Fig 2. Hydrographic Network and Topography of the East Bayotte Area**

## 2.2 Sampling

An inventory of woody species was conducted in the Katouré valley followed by criterion sampling on all individuals of the species *Parkia biglobosa*, retaining only isolated individuals with a height  $\geq 5$  m. From the set of isolated individuals, a random selection of 15 individuals was made to determine the effect of *P. biglobosa* on the herbaceous mat. From each individual, two zones were defined: under and outside the *P. biglobosa* canopy. The zone outside the canopy is characterized by the absence of influence of any other tree. The under-top zone was stratified into transects marked with ropes starting from the foot of the tree to a certain distance: 0R (at the foot of the tree), R/2 (half the radius of the tree crown), R (radius of the tree) and 2R (twice the radius of the tree). The inventory was conducted systematically on each transect using a 1 m<sup>2</sup> quadrat containing 100 squares (Fig. 3). A total of 60 quadrats or floristic surveys were conducted, with 15 for each distance (0R, R/2, R, and 2R). In the non-tree canopy area, ten 9 m<sup>2</sup> (3m x 3m) plots were delineated at a minimum distance of 50 m from any tree. In each of these plots, 5 quadrats of 1m side containing 100 tiles were made (Fig. 3). A total of 50 quadrats for floristic surveys were conducted in the non-tree canopy area. For each floristic survey, the entire herbaceous stratum was inventoried.



**Fig. 3. Sampling method in the under- and out-of-top zone**

### 2.3 Data collection

Prior to the herbaceous layer inventory, the height, diameter at breast height (DBH), and cross-sectional diameters ( $D_{min}$  and  $D_{max}$ ) of the canopy of the trees selected for the study were measured. The average canopy diameter was calculated to determine the canopy area ( $S_{houp}$ ). Within each quadrat, the various grass species encountered were identified and listed on pre-made collection sheets and their abundance estimated. The percentage of ground cover by the entire grass layer was also visually estimated within each quadrat.

### 2.4 Data processing and analysis

Taxonomic richness in each 0R, R/2, R, and 2R transect was determined; species accumulation curves as a function of sampling effort were plotted for. From these samples, the number of species in the area was estimated using the "Chao" estimator [27]:  $S_{chao} = S_{obs} + \frac{f_1^2}{2f_2}$  where  $S_{obs}$  = the number of species in the sample,  $F_1$  = the number of observed species represented by a single individual (singletons) and  $F_2$  = the number of observed species represented by two individuals (duplicates).

The specific frequency for each species was calculated per transect. Diversity was calculated using Simpson's index (D) [27]:  $D' = 1 - \sum P_i^2$ ;  $P_i$ : relative abundance.

However, Jaccard's ecological distance was adopted for this [28]:

$$D = 1 - \frac{S_{1,1}}{S_{1,1} + S_{1,0} + S_{0,1}}$$

[ $S_{1,1}$  being the species observed in the two communities,  $S_{1,0}$  those observed only in the first community,  $S_{0,1}$  those observed only in the second community].

Jaccard's ecological distance was also adopted in the clustering analysis for grouping based on floristic compositions. Principal component analysis was performed to characterize the groups. All data were processed and analyzed with Excel and R-4.2.2 software. Analyses of variance (ANOVA) were performed to compare means between treatments. When

significant differences existed between treatments, the Newman-Keuls test, at the 5% threshold, was used to discriminate the means.

### 3. RESULTS

#### 3.1 Structural characteristics of *P. diglobosa* individuals

The trees selected for the study of the herbaceous stratum are characterized by an average height of  $10\text{m} \pm 0.35$ , an average diameter of  $28\text{ cm} \pm 2.47$  and an average canopy area of  $56\text{ m}^2 \pm 24.74$ . The height, diameter, and canopy area of *P. biglobosa* trees ranged from 5.5 to 13.5m, 15 to 70 cm, and 16 to  $154\text{ m}^2$ , respectively (Table 1).

**Table 1. Structural characteristics of *Parkia biglobosa* plants**

Tree number	Height (m)	DHP (cm)	Dmin (m)	Dmax (m)	Shoup (m <sup>2</sup> )
1	15	70	10	14	113
2	10,5	23	7	9	50
3	6,5	19	4	6	20
4	13,5	45	11	13	113
5	9,5	27	9	11	79
6	12,5	32	9	10,5	75
7	13	37,5	13	15	154
8	9,5	32	5	7	28
9	6,5	15	4	5	16
10	6,5	15	4	5	16
11	6,5	16,5	4	6	20
12	5,5	14,5	4	5	16
13	10,5	27,3	4	5	16
14	11	23,5	9	11	79
15	10,5	27	7	8	44
<b>Average</b>	<b>10</b>	<b>28</b>	<b>7</b>	<b>9</b>	<b>56</b>

#### 3.2 Floristic composition

##### 3.2.1 Richness, overlap and diversity

The inventory of the herbaceous flora conducted during this study resulted in the identification of 20 species grouped into 18 genera and 11 families. The taxonomic richness observed in the different surveys of each transect revealed that the number of species, genera and families increases when approaching the foot of the tree (0R to 2R) (Table 2).

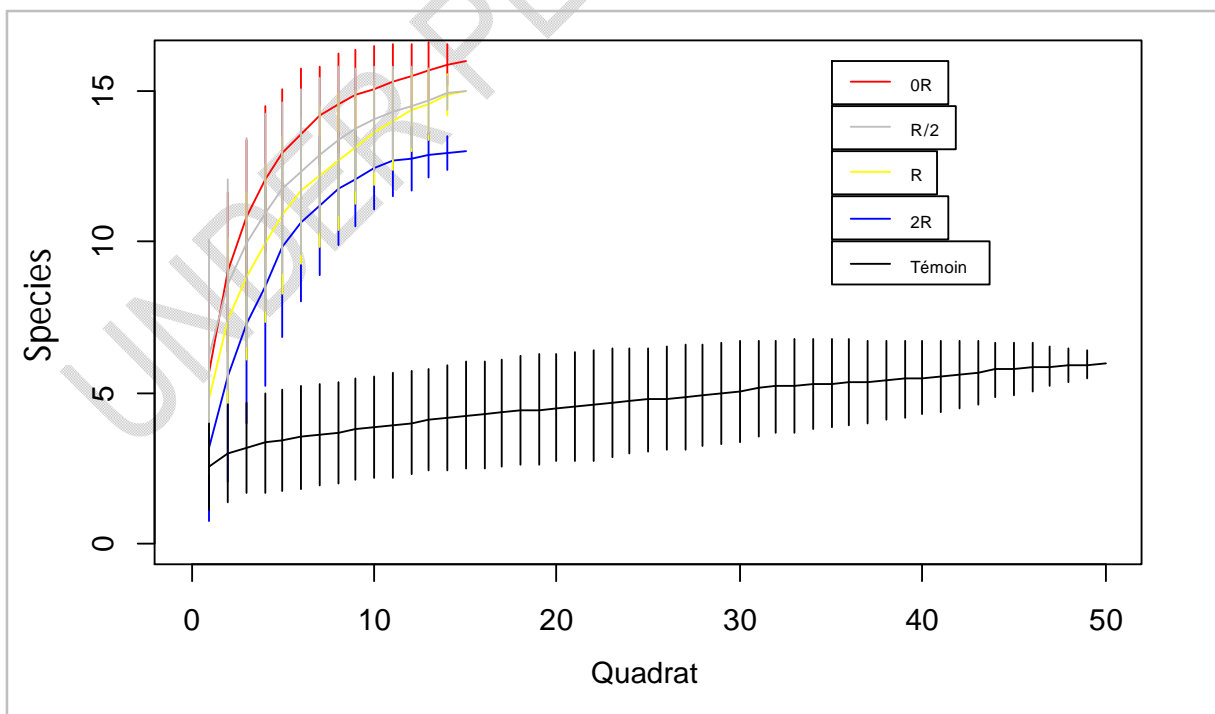
Species richness (species and families) is relatively the same for the different transects. The sampling effort is estimated at 98% for species and 100% for families (Table 2). However, this sampling effort is confirmed by the evolution of the species accumulation curve, which begins to reach the asymptotic stage around 8ième in the condition with tree influence and around 35ième in the condition without tree influence (Fig. 4).

The analysis of variance of the cover rate of the herbaceous layer showed a highly significant difference ( $P=2.9e-09$ ) between the different transects 0R, R/2, R and 2R (Table 2). The cover rate did not vary significantly at the under tree canopy surveys. However, under tree canopy cover rates were significantly higher than out of tree canopy cover ( $54\% \pm 15.4$ ,  $P = 2.9e-09$ ).

ANOVA showed a significant difference in diversity ( $P = 1.55e-12$ ) between the 0R, R/2, R and 2R transects (Table 2). Under tree canopies, diversity at 0R ( $0.80 \pm 0.06$ ), R/2 ( $0.81 \pm 0.04$ ) and R ( $0.77 \pm 0.06$ ) was significantly higher than at 2R ( $0.61 \pm 0.26$ ). Thus, diversity decreases with increasing distance from the canopy area. Also, the diversity under the canopy is significantly higher than that outside the canopy ( $0.58 \pm 0.1$ ).

**Table 2. Observed and estimated taxonomic richness, cover and diversity as a function of distance from the canopy**

Distance	Species			Families			Recovery(%)	Simpson's Index
	SObs	SEst	Rate (%)	SObs	SEst	Rate (%)		
0R	16	17	94	10	10	100	76±15,1a	0,80±0,06a
R/2	15	15	100	9	9	100	83±19,4a	0,81±0,04a
R	15	16	94	8	8	100	76±15,3a	0,77±0,06a
2R	13	13	100	7	7	100	70±17,6a	0,61±0,26b
Witness	6	6	100	5	5	100	54±15,4b	0,58±0,1b



## Fig4. Species accumulation curves

### 3.2.2 Distribution

Among the species inventoried, some had a continuous, some semi-continuous and some disjunct distribution (Table 3). *Crinum latifolium*, *Bulbostyliscapillaris*, *Indigoferaheudelotii*, *Andropogongayanus* remain, however, the most spatially distributed species that are encountered in all observation distances from the tree canopy. Among the most exclusive species, *Ipomoea asarifolia* and *Sesbaniabispinosa* are the species that are only present outside the canopy. The species *Hyptissuaveolens* and *Hedychiumflavescens* are present only at the under-top surveys at distance R and 0R, respectively.

**Table 3. Distribution of species by distance from the canopy**

Families	Species	Code	0R	R/2	R	2R	Witness
Amaryllidaceae	<i>Crinum latifolium</i>	Cl	+	+	+	+	+
Asteraceae	<i>Ageratum conyzoides</i>	Ac	+	+	+	+	
Commelinaceae	<i>Commelinabenghalensis</i>	Cb	+	+			
Convolvulaceae	<i>Ipomoea asarifolia</i>	Ia					+
Convolvulaceae	<i>Ipomoea eriocarpa</i>	Ie	+	+			
Cyperaceae	<i>Bulbostyliscapillaris</i>	Bc	+	+	+	+	+
Cyperaceae	<i>Cyperusesculentus</i>	Ce	+	+	+	+	
Fabaceae	<i>Crotalaria hyssopifolia</i>	Ch	+	+	+	+	
Fabaceae	<i>Indigoferaheudelotii</i>	Ih	+	+	+	+	+
Fabaceae	<i>Sesbaniabispinosa</i>	Sb					+
Fabaceae	<i>Sesbaniasesban</i>	Ss	+	+	+		
Fabaceae	<i>Tephrosiabraceolata</i>	Tb	+	+	+	+	
Lamiaceae	<i>Hyptissuaveolens</i>	Hs			+		
Malvaceae	<i>Corchorusolitorius</i>	Co	+	+	+	+	
Malvaceae	<i>Hibiscus asper</i>	Ha			+	+	
Poaceae	<i>Andropogongayanus</i>	Ag	+	+	+	+	+
Poaceae	<i>Brachariadeflexa</i>	Bd	+	+	+	+	
Poaceae	<i>Echinochloacolona</i>	Ec	+	+	+	+	
Rubiaceae	<i>Pentodonpentandrus</i>	Pp	+	+	+	+	
Zingiberaceae	<i>Hedychiumflavescens</i>	Hf	+				

### 3.2.3 Frequency

Of the species surveyed in this study, *B. deflexa*, *C. esculentus*, *E. colona*, *I. heudelotii*, and *P. pentandrus* were most frequently encountered in the under tree canopy surveys (0R, R/2, and R), with frequencies of occurrence of more than 50% (Table 4). *A. gayanus* and *B. capillaris* are more frequently encountered in the out-of-top surveys with an occurrence frequency equal to 100%. *H. flavescens*, *H. asper*, *H. suaveolens*, *I. asarifolia*, *I. eriocarpa* and *S. bispinosa* are the least frequent species with an occurrence frequency that varies between 4 and 13%.

**Table 4. Occurrence of species as a function of distance from the canopy**

Family	Species	0R	R/2	R	2R	Witness
Asteraceae	<i>Ageratumconyzoides</i>	27	20	20	13	

Poaceae	<i>Andropogongayanus</i>	20	20	13	27	100
Poaceae	<i>Brachariadeflexa</i>	73	87	67	40	
Cyperaceae	<i>Bulbostyliscapillaris</i>	27	7	7	13	100
Commelinaceae	<i>Commelinabenghalensis</i>	33	13			
Malvaceae	<i>Corchorusolitorius</i>	53	53	27	27	
Amaryllidaceae	<i>Crinumlatifolium</i>	40	33	33	20	40
Fabaceae	<i>Crotalariahyssopifolia</i>	27	27	13	20	
Cyperaceae	<i>Cyperusesculentus</i>	53	53	53	20	
Poaceae	<i>Echinochloacolona</i>	53	53	73	60	
Zingiberaceae	<i>Hedychiumflavescens</i>	7				
Malvaceae	<i>Hibiscusasper</i>			7	13	
Lamiaceae	<i>Hyptissuaveolens</i>			7		
Fabaceae	<i>Indigoferaheudelotii</i>	60	93	73	53	4
Convolvulaceae	<i>Ipomoeaasarifolia</i>					4
Convolvulaceae	<i>Ipomoeaeriocarpa</i>	7	7			
Rubiaceae	<i>Pentodonpentandrus</i>	53	100	60	33	
Fabaceae	<i>Sesbaniabispinosa</i>					4
Fabaceae	<i>Sesbaniasesban</i>	13	13	13		
Fabaceae	<i>Tephrosiabracteolata</i>	20	13	13	7	

### 3.2.4 Abundance

Analysis showed variation in abundance with species and distance from the canopy (Table 5). *A. conyzoides*, *A. gayanus*, *B. deflexa*, *B. capillaris*, *C. esculentus*, and *E. colona* were the most abundant species in 0R and/or R/2 surveys. *A. gayanus* (31%), *B. deflexa* (32%), and *E. colona* (60%) are most abundant in the R distance surveys. *B. deflexa*, *E. colona*, *A. conyzoides*, and *A. gayanus* were most abundant in surveys at distance 2R with 76%, 66%, 51%, and 46% respectively. *B. capillaris* (74%) and *A. gayanus* (40%) were most abundant in the out-of-top surveys.

**Table 5. Relative abundance of species as a function of distance from the canopy**

Species	0R	R/2	R	2R	Witness
<i>Ageratumconyzoides</i>	30	6	12	51	
<i>Andropogongayanus</i>	13	47	31	46	40
<i>Brachariadeflexa</i>	57	43	32	76	
<i>Bulbostyliscapillaris</i>	35	30	20	35	74
<i>Commelinabenghalensis</i>	7	11			
<i>Corchorusolitorius</i>	17	27	10	34	
<i>Crinumlatifolium</i>	3	14	4	32	8
<i>Crotalariahyssopifolia</i>	10	7	5	9	
<i>Cyperusesculentus</i>	38	40	22	33	
<i>Echinochloacolona</i>	31	32	60	66	
<i>Hedychiumflavescens</i>	3				
<i>Hibiscusasper</i>			1	4	
<i>Hyptissuaveolens</i>			10		

<i>Indigoferaheudelotii</i>	15	22	21	12	1
<i>Ipomoeaasarifolia</i>					9
<i>Ipomoeaeriacarpa</i>	10	5			
<i>Pentodonpentandrus</i>	7	8	4	7	
<i>sesbaniabispinosa</i>					1
<i>Sesbaniasesban</i>	4	3	3		
<i>Tephrosiabracteolata</i>	8	3	3	1	

### 3.3 Dissimilarity

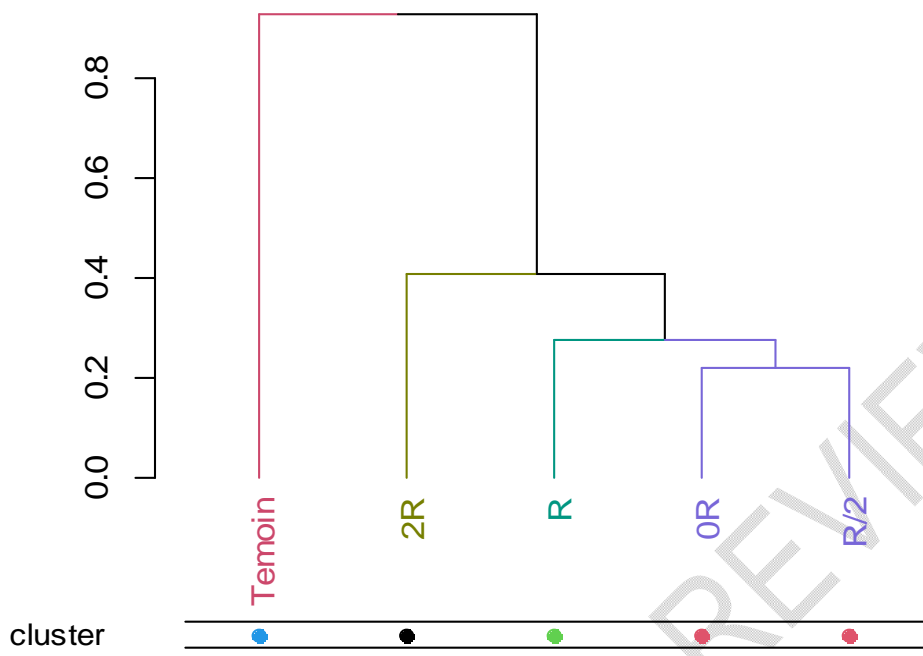
High floristic dissimilarity ranging from 93 to 95% was noted between under- and out-of-top zones (Table 6). However, under the canopy, dissimilarity was low between the pairs 0R and R/2 (0.22) and R/2 and R (0.27), ranging from 41 to 51%.

**Table 6. Jaccard's distance matrix of distances to the canopy**

	2R	0R	R	R/2
<b>0R</b>	0,47			
<b>R</b>	0,41	0,31		
<b>R/2</b>	0,51	0,22	0,27	
<b>Witness</b>	0,94	0,93	0,95	0,95

### 3.4 Relationship between distances and floristic composition

Clustering analysis revealed 4 distinct groups at more than 75% (Fig. 5). Thus the 1er group concerns transects 0R and R/2 with an abundance of *B. deflexa*, *C. olitorius*, *C. esculentus*, *I. heudelotii*, *P. pentandrus*, *A. conyzoides*, *C. hyssopifolia*, *S. sesban*, *T. bracteolata*, *H. flavescens* and *C. benghalensis*. The 2nd group encompasses transect R and is distinguished by a dominance of *E. colona* and *I. heudelotii* species. The 3eme group includes transect 2R and is characterized by a greater presence of *H. asper* and *H. suaveolens*. The 4eme group, corresponding to the area outside the canopy, is characterized by the presence of *I. asarifolia*, *S. bispinosa*, *A. gayanus*, *B. capillaris* and *C. latifolium* (Fig. 6).



**Fig. 5. Grouping of distances according to jaccard dissimilarity**

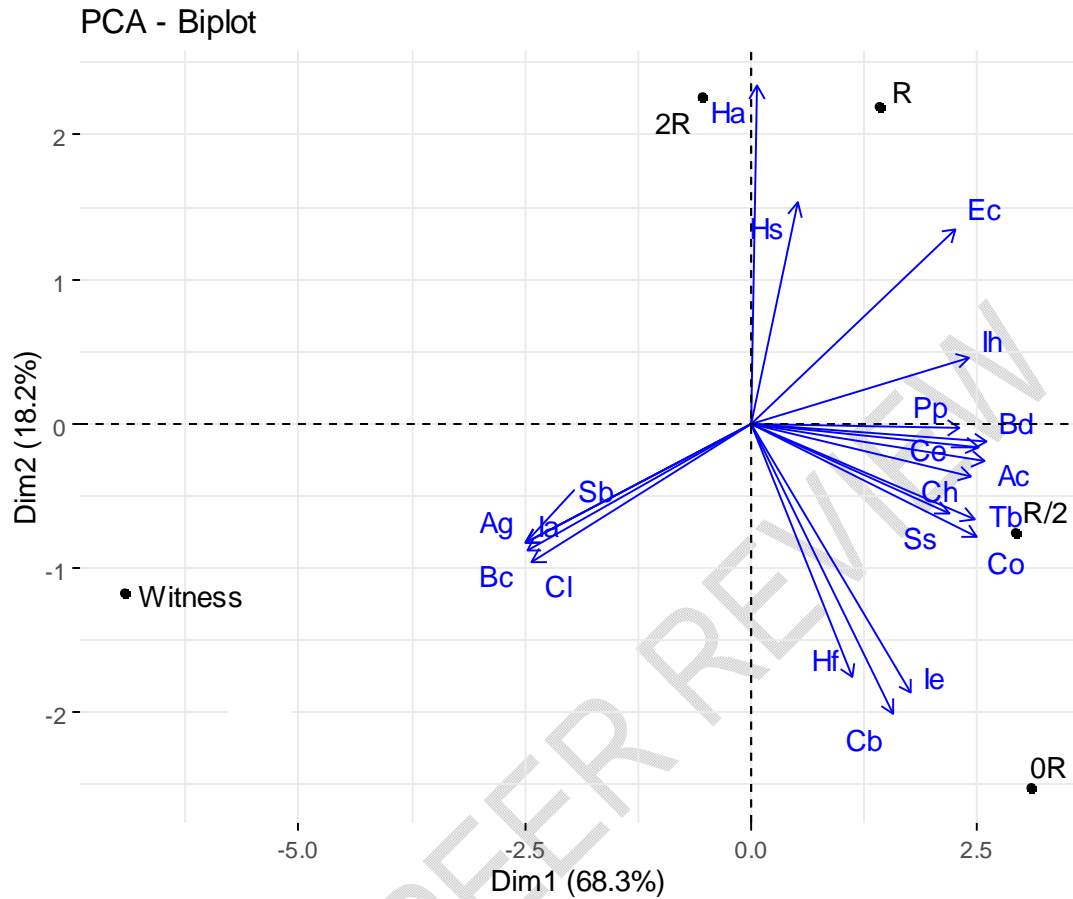


Fig. 6. Projection of distances and species by principal component analysis

#### 4. DISCUSSION

Herbaceous plants are mostly used by farmers as medicinal plants, fodder or for cultural purposes. These plants also contribute to soil stabilization, erosion control and groundwater regulation [30,31]. Therefore, in situ biodiversity conservation should not only focus on trees, but also encompass grasses, as they are also very sensitive to habitat change [32]. It has been found, however, that the microenvironment created by the tree located outside of protected areas, tends to influence either positively or negatively the floristic composition, frequency, abundance and cover of the herbaceous stratum [23, 33, 34, 35].

Indeed, at the end of this study, analysis of the herbaceous plant groupings showed that the numbers of species, genera, and families observed in the surveys under the influence of the *Parkia biglobosa* tree were far greater than those observed in the surveys without the influence of any tree (control). This may suggest, however, that the presence of the *Parkia* tree would strongly contribute to the occurrence and maintenance of herbaceous biodiversity in a habitat. Authors such as Sanou et al. (2017) have indeed obtained similar results by assessing weeds around the *Parkia biglobosa* trunk in association with some crops and compared to field plots. Factors underlying this high diversity observed under and around the *Parkia biglobosa* tree are thought to be related to wind and animals (birds, ruminants,

and rodents), among others. It has been reported that the trapping of grass seeds carried by the wind in the tree canopy and released under the canopy contributed to the species fill under and around the tree [36, 37, 38]. This is in the same way that some birds parasitize *Parkia biglobosa* by dispersing some grass seeds into it [39]. Also, some rodents and ruminants, while sheltering under the tree canopy, leave some seeds there through their droppings [40, 41, 42].

In addition to its impact on enhancing herbaceous biodiversity in the habitat, the study also showed that *P. biglobosa* influenced the frequency, abundance and cover of some herbaceous species under and around the tree. However, this could be related to the edapho-climatic conditions that prevail under the canopy of the species, as *P. biglobosa* due to its canopy architecture and the fact that it is a deciduous legume, would substantially improve soil fertility as well as its moisture content by reducing the temperature under its canopy [43, 44, 45, 46]. It is mainly in this sense that some authors justify the argument that "the effects of temperature and soil fertility may outweigh the negative effect of tree shade" [45].

Shade from the *Parkia biglobosa* tree influenced the distribution and frequency of the herbaceous layer in this study. This suggests that in some way, herbaceous species respond individually to environmental variables and therefore to the influences of tree shading [47, 48].

Indeed, more than 70% of the herbaceous species were influenced by the presence of *P. biglobosa*. Among these species *B. deflexa*, *C. olitorius*, *C. esculentus*, *E. colona*, *I. hirsuta* and *P. pentandrus* were strongly influenced by the presence of *P. biglobosa* as they were very frequent and specifically found in the surveys under and around the tree. Species such as *A. conyzoides*, *C. benghalensis*, *C. hyssopifolia*, *S. sesban*, *T. bracteolata*, *H. flavescens*, *I. eriocarpa*, although infrequent, were also specifically found in the surveys under and around the tree. This could be explained by the fact that most of these species prefer humus soils in the lowlands and/or seek light shade and/or are thermo-cosmopolitan [49, 50]. On the other hand, the specificity of these herbaceous species under and around the tree and consequently their absence in the completely uncovered area could be related to the high abundance of *A. gayanus* in the said area. Indeed, according to Rossiter-Rachor et al. (2009) *A. gayanus* tends to stimulate ammonification and inhibit nitrification, and this inhibition would lead to a change in soil nitrogen relationships and reinforce its competitive superiority and persistence in the completely uncovered area outside the canopy.

## 5. CONCLUSION

This study showed that the presence of *P. biglobosa* trees influenced the floristic composition, distribution, frequency and abundance of herbaceous vegetation. The taxonomic richness inventoried under *P. biglobosa* trees was greater than that inventoried outside the tree canopy. Diversity was greater under the *Parkia* canopy and high floristic dissimilarity existed between the under and out of tree canopy areas. The presence of *P. biglobosa* influenced the appearance of herbaceous species under its canopy through improved habitat conditions.

## REFERENCES

1. Dresch J. Rice cultivation in West Africa. *Annals of Geography*. 1949;58(312):295–312. English.
2. Sarr O, Diatta S, Gueye M, Ndiaye PM, Guisse A, Akpo LEL. Importance of woody fodder in an agropastoral system in Senegal (West Africa). *Rev Medicine Vet*. 2013. English.

3. Sambou A, Sambou B, Ræbild A. Farmers' contributions to the conservation of tree diversity in the Groundnut Basin, Senegal. *J For Res.* 2017 Sep 1;28(5):1083–96.
4. Bellefontaine R, Petit S, Pain-Orcet M, Deleporte P, Bertault JG. Trees outside forests: towards better consideration. FAO; 2001. English.
5. Sacande M, Parfondry M. Non-timber forest products: from land restoration to income generation [Internet]. FAO; 2018 [cited 2022 Oct 7]. Available from: <http://www.fao.org/3/ca2428fr/CA2428FR.pdf>. English.
6. Chung MY, Son S, Herrando-Moraira S, Tang CQ, Maki M, Kim YD, et al. Incorporating differences between genetic diversity of trees and herbaceous plants in conservation strategies. *Conserv Biol.* 2020;34(5):1142–51.
7. Hunter D, Heywood V. Crop wild relatives: In situ conservation handbook [Internet]. CTA / Bioversity International; 2011 [cited 2022 Feb 27]. Available from: <https://cgspace.cgiar.org/handle/10568/76812>. English.
8. Jarvis DI, Padoch C, Cooper HD, International B. Biodiversity management in agricultural ecosystems [Internet]. 2012 [cited 2022 Mar 2]. Available from: <https://cgspace.cgiar.org/handle/10568/104591>. English.
9. Montoroi JP, Albergel J. The intervention of ORSTOM hydrologists and soil scientists in Casamance. In: Conservation and sustainable use of the natural resources of the Casamance watershed [Internet]. 1992. p. 96–8. Available from: <https://www.documentation.ird.fr/hor/fdi:38209>. English.
10. Solly B, Dieye EHB, Mballo I, Sy O, Sane T, Thior M. Spatio-temporal dynamics of forest landscapes in southern Senegal: case of the department of Vélingara. *Physio-Geo Geography Phys Environ.* 2020 Mar 12;(Volume 15):41–67. English.
11. Pdefde. Assessment of the state of biodiversity and its various threats in Senegal. Senegal: project to facilitate commitments for biodiversity in Senegal (BIODEV2030); 2021. French.
12. RoS. Fourth national report on the implementation of the Convention on Biological Diversity. Ministry of Environment and Nature Protection; 2010. Report No.: 4. English.
13. RoS. Fifth national report on the implementation of the Convention on Biological Diversity. Ministry of Environment and Nature Protection; 2014. Report No.: 5. English.
14. Beer J, Harvey CA, Ibrahim M, Harmand JM, Somarriba E, Jimenez F. Service functions of agroforestry systems. In National Library of Quebec; 2003. English.
15. Balny P, Domallain D, De Galbert M. Promotion of agroforestry systems. Proposal for an action plan in favor of the hedgerow tree Assoc Aux Prod Agric MAAF CGAAER Paris. 2015; English.
16. Masure A, Martin P, Lacan X, Rafflegeau S. Promoting oil palm-based agroforestry: an asset for the sustainability of the sector. *Cah Agric.* 2022;31:14. English.
17. Coly I, Akpo LE, Sarr D, Malou R, Dacosta H, Diome F. Agro-ecological characterization of the Nema terroir in the Sudano-Sahelian zone in Senegal: Typology of agroforestry parks. *Agron Afr.* 2005;17(1):53–62. English.
18. Moussa M, Mahamane L, Saadou M. Characterization of woody stands in parks with *Faidherbia albida* (Del) A. Chev. and *Prosopis africana* (Guill., Perrot and Rich.) Taub. of central-southern Niger. *J Appl Biosci.* 2015;94:8890–906. English.

19. Morou B, Ounani H, Oumani AA, Diouf A, Guero C, Mahamane A. Characterization of the demographic structure of ligneous plants in the agroforestry parks of the Dan Saga region (Aguié, Niger). *Int J BiolChemSci*. 2016;10(3):1295–311. English.
20. Camara B. Agro-ecological and socio-economic characterization of agroforestry parklands with *Alaëisguineensis* Jacq. and *Faidherbia albida* (Del.) Chev. and their influences on the productivity of upland rice in lower Casamance. 2018; English.
21. Diatta ÉA, Sambou B, Niang-Diop F, Diatta M. Characterization of the *Parkia biglobosa* (Jacq.) R. Br. Ex G. Don agroforestry park in Lower Casamance (Senegal). *VertigO-Electronic Rev In Sci Environ*. 2021; English.
22. Akpo LÉ, Banoin M, Grouzis M. Effect of trees on fodder production and quality of herbaceous vegetation: pastoral assessment in the Sahelian environment. *Rev Medicine Vet*. 2003;154(10):619–28. English.
23. Akpo LÉ, Grouzis M. Tree/grass interactions in semi-arid bioclimate: influence of pasture. *Sci Chang Planetary Drought*. 2004;15(3):253–61. English.
24. Grouzis M, Akpo LE. Tree-grass interactions in the Sahel. *Dry Sci Chang Planetaries*. 2006;17(1–2):318–25. English.
25. Sagna P. Climate dynamics and its recent evolution in the western part of West Africa. Th State Ès Lett University Cheikh Anta Diop Dakar. 2005. English.
26. Guèye S. Study on forest resources and forest plantations in Senegal: period: 1992-99. Proj GCPINT679EC CE FAO. 2000; English.
27. BEGUINOT J. Making the most of incomplete inventories: how to best estimate the number of missing species and plan for the additional sampling effort required to reduce this number. *Rev Sci Bourgogne-Nat*. 2017;141–50. English.
28. Morris EK, Caruso T, Buscot F, Fischer M, Hancock C, Maier TS, et al. Choosing and using diversity indices: insights for ecological applications from the German Biodiversity Exploratories. *School Evol*. 2014 Sep;4(18):3514–24.
29. Marcon E. Biodiversity measurements [PhD Thesis]. AgroParisTech; 2015. French.
30. Gravel D, Gounand I, Mouquet N. The role of biodiversity in the functioning of ecosystems. *CiencaAmbiente*. 2009;39:63–84. English.
31. Goudard A. Functioning of ecosystems and biological invasions: importance of biodiversity and interspecific interactions [PhD Thesis]. Pierre and Marie Curie-Paris VI University; 2007. English.
32. Raveloaritiana E, Wurz A, Grass I, Osen K, Soazafy MR, Martin DA, et al. Land-use intensification increases richness of native and exotic herbaceous plants, but not endemics, in Malagasy vanilla landscapes. *Miscellaneous Dist*. 2021;27(5):784–98.
33. Buba T. Impacts of different tree species of different sizes on spatial distribution of herbaceous plants in the Nigerian Guinea savannah ecological zone. *Scientifica*. 2015;2015.
34. Diallo MD, Saleh MM, Bassene C, Wood SA, Diop A, Guisse A. Influence of the leaf litter of five tropical plant species on the floristic diversity of herbaceous plants in the Ferlo area (Senegal). *Int J Biol Chem Sci*. 2015;9(2):803–14. English.
35. Kumar P, Kumar A, Patil M, Sharma NK, Singh AN. Herbaceous vegetation under planted woody species on coal mine spoil acts as a source of organic matter. *ActaOecologica*. 2022;114:103809.

36. Sanou J, Bazie HR, Dao MCE, Bayala J. Weeds control through tree-crop associations in a parkland of Burkina Faso. *Int J Biol Chem Sci.* 2017;11(2):623–39.
37. Clark CJ, Poulsen JR, Bolker BM, Connor EF, Parker VT. Comparative seed shadows of bird-, monkey-, and wind-dispersed trees. *Ecology.* 2005;86(10):2684–94.
38. Clark CJ, Poulsen JR, Parker VT. The role of arboreal seed dispersal groups on the seed rain of a lowland tropical forest 1. *Biotropica.* 2001;33(4):606–20.
39. Raji IA, Chaskda AA, Manu SA, Downs CT. Bird species use of *Tapinanthusdodoneifolius* mistletoes parasitizing African locust bean trees *Parkia biglobosa* in Amurum Forest Reserve, Nigeria. *J Ornitol.* 2021 Oct 1;162(4):1129–40.
40. Pakeman RJ. Plant migration rates and seed dispersal mechanisms. *J Biogeogr.* 2001;795–800.
41. van Leeuwen CH, Tella JL, Green AJ. Animal-mediated dispersal in understudied systems. *Front Eco Evol.* 2020;508.
42. Vellend M, Myers JA, Gardescu S, Marks PL. Dispersal of *Trillium* seeds by deer: implications for long-distance migration of forest herbs. *Ecology.* 2003;84(4):1067–72.
43. Alo EA, Aweto AO. The Properties of Soil Under the Canopy of the Locust Bean Tree (*Parkia biglobosa*), in Relation to Tree Biomass, in Farmland in Oyo Area, South Western Nigeria. *J About Aearth Sci.* 2018;8(8):38–46.
44. Buba T. Spatial Variation of Soil Physicochemical Properties with Respect to Some Selected Tree Species in the Nigerian Northern Guinea Savannah. *Int J Plant Soil Sci.* 2015;7(5):273–83.
45. Jonsson K, Ong CK, Odongo JCW. Influence of scattered nere and karite trees on microclimate, soil fertility and millet yield in Burkina Faso. *Agric exp.* 1999;35(1):39–53.
46. Sanou J, Zougmore R, Bayala J, Teklehaimanot Z. Soil infiltrability and water content as affected by Baobab (*Adansonia digitata* L.) and Néré (*Parkia biglobosa* (Jacq.) Benth.) trees in farmed parklands of West Africa. *Soil Use Manag.* 2010;26(1):75–81.
47. Chi Y, Shi H, Wang X, Qin X, Zheng W, Peng S. Impact factors identification of spatial heterogeneity of herbaceous plant diversity on five southern islands of Miaodao Archipelago in North China. *Chin J OceanolLimnol.* 2016 Sep 1;34(5):937–51.
48. Honvou SHS, Aboh BA, Sewade C, Teka O, Gandonou BC, Oumorou M, et al. Floristic diversity, structure and distribution of plant groups in transhumant routes in the Lower and Middle Ouémé Valley in Benin. *Int J Biol Chem Sci.* 2021 Apr 20;15(1):81–96. English.
49. Berhaut J. Illustrated flora of Senegal. Gouv Senegal Ministry Rural Dev Dir EauxFor Dakar. 1971. English.
50. Le Bourgeois T, Merlier H. *Adventrop: weeds in Sudano-Sahelian Africa.* Editions Quae; 1995. French.
51. Rossiter-Rachor NA, Setterfield SA, Douglas MM, Hutley LB, Cook GD, Schmidt S. Invasive *Andropogongayanus* (gamba grass) is an ecosystem transformer of nitrogen relations in Australian savanna. *School Appl.* 2009;19(6):1546–60.