

Original Research Article

Decadal Trends of Climate Change in Central Tamil Nadu – Implications for Climate Resilient Agriculture

ABSTRACT

A temporal rainfall analysis of Central Tamil Nadu was carried out for the past 12 decades for examining the Climate Change. The detailed statistical analysis of annual as well as season-wise rainfall data of the past 12 decades shows very clearly that there is a drastic climate change over the years. The mean annual rainfall is 862.10 mm but there was a wider range in distribution of rainfall seasonally as well as annually as high as 874.98 mm and the annual rainfall exhibited a very high variance of 28,094.69 mm. The coefficient of variation observed was also higher ranging from 31.95 to 104.60. An analysis of Kurtosis showed Platykurtic distribution (negative kurtosis with lighter tail) of rainfall for the first 6 decades of the 19th century (1900-1960), whereas, it was Leptokurtic distribution (positive kurtosis with heavier tail) for the rest of the 6 decades. (1961-2021). Hence, the drastic climate change is clearly visible in Kurtosis analysis, when it turns from Platykurtic distribution in to Leptokurtic distribution, suggesting more number of extreme events in the later decades. These facts clearly portrays the profound effect of Climate change in Central Tamil Nadu. This calls for efficient climate resilient policy options viz., building resilience in soil, rainwater harvesting and recycling, water saving technologies, adapter cultivars and cropping systems, crop contingency plans, livestock and fishery intervention, weather based agro advisories and other institutional interventions, so as to increase the resilience of agricultural production to climate change in the central Tamil Nadu.

Keywords: Climate Change, Annual rainfall, seasonal rainfall, Kurtosis, Tiuchirappalli District.

1. INTRODUCTION

Climate change is an undisputed reality with severe impacts on the natural environment, human lives, economic assets and activities. Changes to Earth's climate driven by increased human emissions of heat-trapping greenhouse gases are already having widespread effects on the environment: glaciers and ice sheets are shrinking, river and lake ice is breaking up earlier, plant and animal geographic ranges are shifting, and plants and trees are blooming sooner. Some changes (such as droughts, wildfires, and extreme rainfall) are happening faster than scientists previously assessed. In fact, according to the Intergovernmental Panel on Climate Change (IPCC) modern humans have never before seen the observed changes in our global climate, and some of these changes are irreversible over the next hundreds to thousands of years [1&2].

1.1 Climate Change in India

India is one of the countries that are more vulnerable to climate change. The Coupled Model Intercomparison Project (CMIP) 5 projections for India show that the average climate is likely to be warmer by 1.70 to 2.00 C for 2030s and by 3.30 – 4.80 C for 2080s compared to the pre-industrial times. The precipitation is likely to increase by 5 to 6 per cent and 6 to 14 per cent, for 2030s and 2080s, respectively. [3-5]. Agriculture, being a biological production process, is obviously affected by climate and hence the projected change in climate will have implications to sustainability of agricultural production and of livelihoods of those dependent on agriculture. As climate change aggravates all other problems such as land degradation, market volatility, rising input costs, slowing response to added inputs that hinder agricultural growth, it is recognized as a potent threat to sustainability of agriculture. Developing countries such as India, with their relatively higher dependence on agriculture for livelihoods, are more likely to suffer from such an impending climate change [6-8].

1.2 Climate Change in Tamil Nadu

In India, Tamil Nadu is one of the state most vulnerable to drought impacting agriculture and allied activities. In a study undertaken by Varadan, R.J. [9] while examining climate change phenomena in all the districts of Tamil Nadu, concluded that Tiruchirappali district was the most vulnerable district in Tamil Nadu. Hence, Tiruchirappali district, the Central Tamil Nadu, has been chosen for the present study to make a detailed analysis of rainfall pattern for almost 120 years and the corresponding inferences are drawn.

2. DATA AND METHODOLOGY

Secondary data on rainfall i.e, rainfall of Tiruchirappalli district, the central Tamil Nadu for the past 120 years in respect of South West monsoon, North East monsoon, Winter and Hot Weather periods and annual rainfall were collected. The collected data is subjected to descriptive statistical analysis, viz, mean, coefficient of variation, variance, skewness and kurtosis and the following results were obtained.

2.1 Mean

It is the measure of central tendency and first moment of distribution and arrived by the following formula:

$$\bar{x} = \frac{\sum_{i=1}^N x_i}{N}$$

2.2 Variance

In probability theory and statistics, variance is the expectation of the squared deviation of a random variable from its population mean or sample mean. Variance is a measure of dispersion, meaning it is a measure of how far a set of numbers is spread out from their average value [10].

$$\sigma^2 = \frac{\sum_{i=1}^N (X_i - \bar{X})^2}{N}$$

2.3 Coefficient of Variation

The coefficient of variation (CV) also known as relative standard deviation (RSD) is a standardized measure of dispersion of a probability distribution of frequency distribution. It is often expressed as percentage and is defined as the ratio of the standard deviation to the mean.[11].

$$\text{Coefficient of Variation} = \frac{\text{Standard Deviation}}{\text{Mean}} \times 100$$

2.4 Kurtosis

Kurtosis is a measure of whether the data are heavy-tailed or light tailed relative to normal distribution. The data sets with high kurtosis tend to have heavy tails or outliers. Data sets with low kurtosis tend to have light tails.

$$Kurt = \frac{1}{N} \sum_{i=1}^N \left[\frac{(X_i - \bar{X})}{\sigma} \right]^4$$

3. RESULTS AND DISCUSSION

3.1 Annual Rainfall

A temporal analysis of annual rainfall in Tiruchirappalli district, the Central Tamil Nadu for the past 120 years revealed that the mean annual rainfall is 862.10 mm, but it exhibited a very high variance of 28,094.69 mm, with a lowest rainfall of 423.80 mm in the year 2016-17 and with a

maximum rainfall of 1297.78 mm in the year 1988. The range observed was very wide i.e., 874.98 mm and it exhibited a kurtosis of leptokurtic distribution with a positive tail.

Further, in order to capture the Inter decadal variations in rainfall more clearly, the data is divided into four sub-sections, i.e., every 30 years constitute one sub-section as follows;

Table-1. Inter Decadal Rainfall Analysis

Years	Sub-Section of every 3 Decades
1901-1930	I
1931-1960	II
1961-1990	III
1991-2021	IV

The annual rainfall received during every three decades are analysed and presented in the following chart. (Fig. 1.)

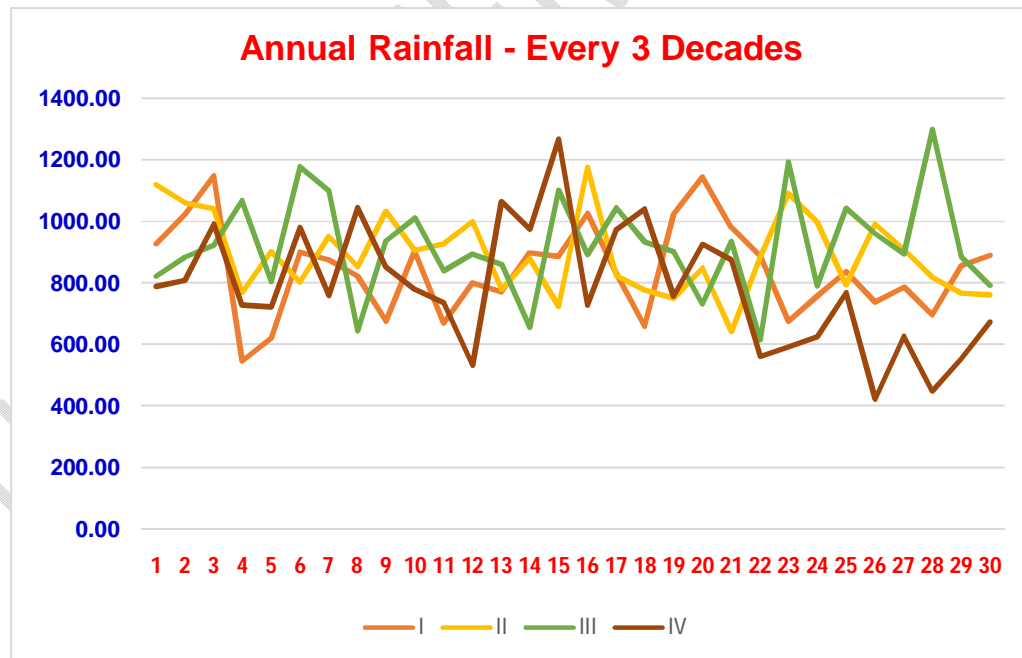


Fig-1. Annual Rainfall in mm. (Every 3 Decades)

From the above graph, it could be inferred that the that the annual rainfall received is considerably and conspicuously lower especially in the last 10 years compared to the rest of 110 years. This is a clear indication of profound Climate Change.

3.2 South West Monsoon rainfall

An analysis of the South West Monsoon rainfall data of Tiruchirappalli district for the past 120 years revealed that there was a wider variation in the rainfall received over years exhibiting a maximum range of 904.32 mm, with some years as low as 114.10 and in some years as high as 1018.42. As per the IMD classification, the former was a severe meteorological drought and the latter was severe flood and both are extreme events to climate change and not congenial for a good crop [12]. The mean rainfall is 317.83 mm with a CV of 34.05 per cent. The variance of the rainfall is 11,709.20 mm. Further, the analysis of Kurtosis showed Leptokurtic distribution (a positive kurtosis of 14.15 with a heavier tail) suggesting the more number of outliers, namely, the extreme events.

The Inter-Decadal variations in South West monsoon are analysed and presented in the following Chart.

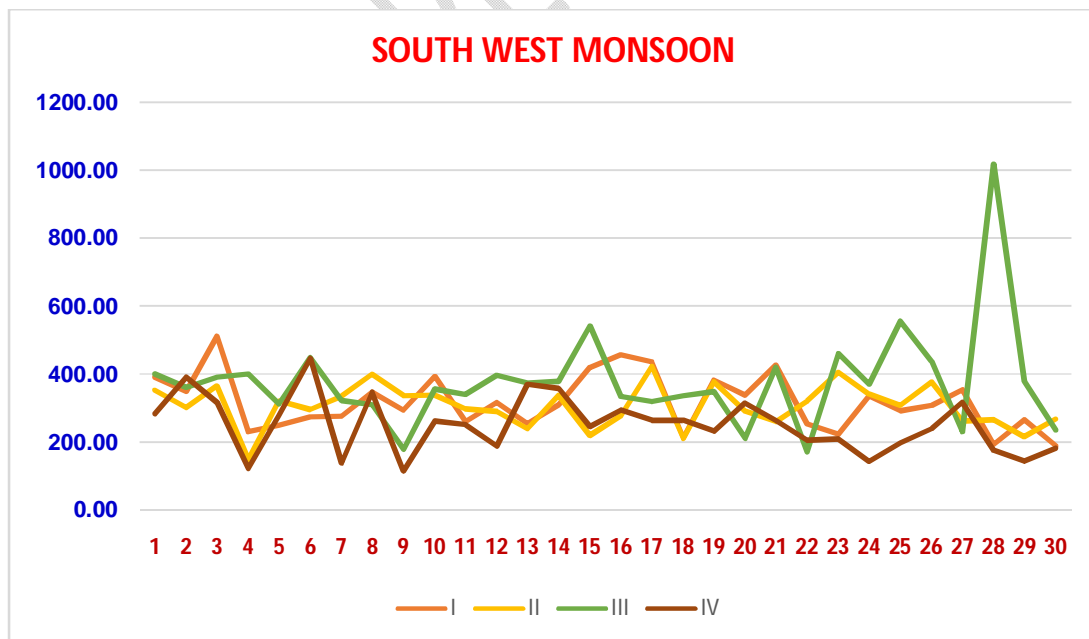


Fig.2. Inter-Decadal rainfall variations in South West Monsoon (in mm).

- It is quite obvious from the graph that the rainfall received during the South West monsoon period is consecutively lower in the last 3 decades compared to the rainfall received in the first 9 decades of 19th century.
- This is also another indication of profound Climate Change.

3.3 North East monsoon rainfall

With regard to North East monsoon rainfall, which contributes nearly 45 per cent of total annual rainfall, exhibited a still higher variance of 14563.95 mm, with the mean rainfall of 377.69 mm and with a CV of 31.95 per cent. The range observed was 715.11 mm with a minimum of 143.09 mm and a maximum of 858.20 mm. Here again, an analysis of Kurtosis revealed Leptokurtic distribution.

The Inter-Decadal variations in North East monsoon are analysed and presented in the following Chart. (Fig.3)

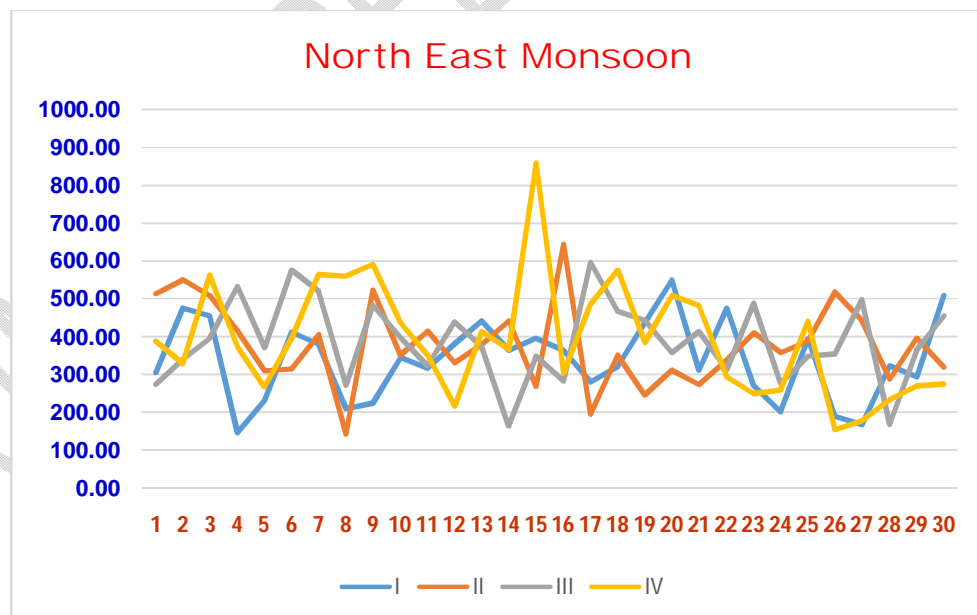


Fig.3. Inter-Decadal Rainfall variations in North East Monsoon (in mm).

- It could be inferred from the graph (Fig.3) that the rainfall received during the North East monsoon period is considerably lower in the last 10 years (except one year) compared to the rainfall received during the past 110 years.

3.4 Winter rainfall

As far as Winter rainfall is concerned, it exhibited a very high CV of 104.60 per cent with a mean rainfall of 23.86 mm. It was noted that in some of the years, there was absolutely no rainfall received during winter (almost Zero) and the maximum rainfall received was 95.37 mm. The winter rainfall is the least contributing to the annual rainfall of Central Tamil Nadu.

3.5 Hot Weather period rainfall

In case of Hot Weather period, the mean rainfall is 149.42 mm with a CV of 40.30 per cent. Here again, in some of the years, there was absolutely no rainfall received during hot weather period (almost Zero) and the maximum rainfall received was 309.62 mm.

3.6 Inter Decadal Variance in Rainfall

The Variance in annual rainfall for every 3 decades were analysed and presented in the following chart. (Fig. 4.)

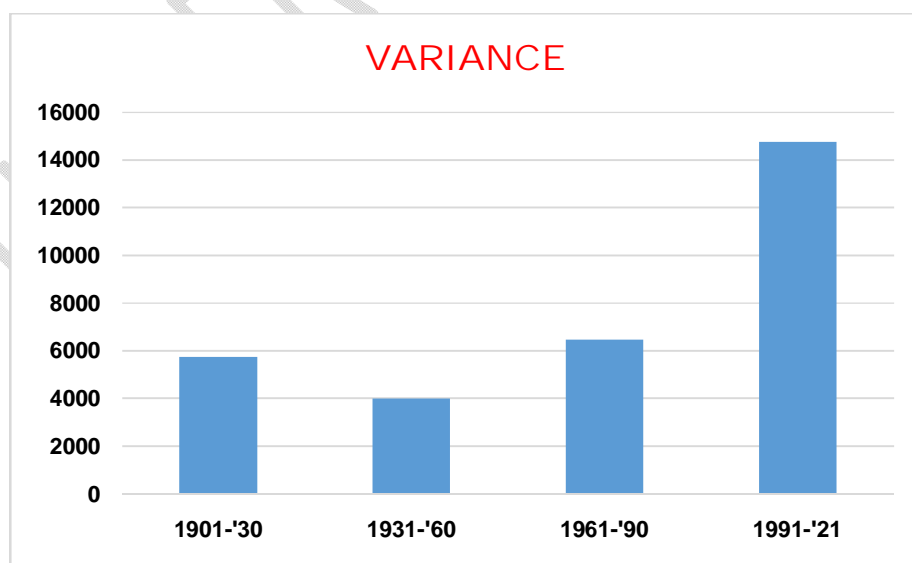


Fig.4. Variance in annual rainfall (mm) over decades

It has been observed that the Variance in Rainfall in Tiruchirappalli district, has been increasing every 3 decades and especially the Variance in the last 30 years (1991-21) is almost doubled when compared to variance in the first three decades of 19th century. (1901 -1930). This is again, a clear indication of profound Climate Change.

3.7 Inter Decadal Kurtosis

Apart from variance, another measure, namely, kurtosis will provide the meaningful insight about the phenomenon of Climate change. The inter-Decadal kurtosis is presented in the following chart. (Fig. 5.)

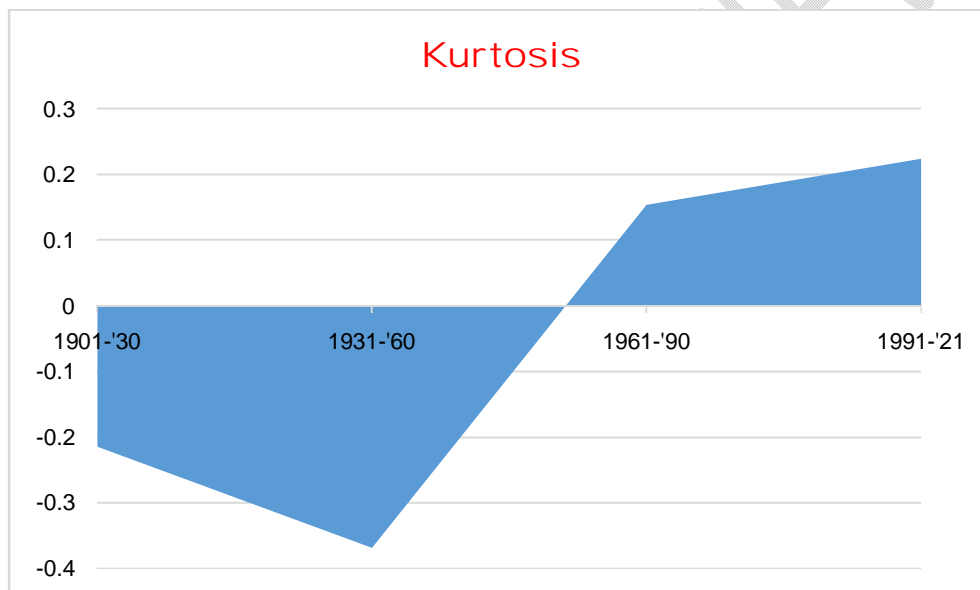


Fig.5. Inter Decadal Kurtosis

An analysis of Kurtosis showed Platykurtic distribution (negative kurtosis with lighter tail) of rainfall for the first 6 decades of the 19th century (1900-1960), whereas, it was Leptokurtic distribution (positive kurtosis with heavier tail) for the rest of the 6 decades. (1961-2021). Hence, the drastic climate change is clearly visible in Kurtosis analysis, when it turns from Platykurtic distribution in to Leptokurtic distribution. This implies the probability of outlier namely extreme events will be more in the later decades.

Table 2 :- Number of extreme events in sub-section of every 3 decades.

Sub-Section of every 3 Decades	No. of Extreme events
I	3

II	4
III	7
IV	8

- The number of Extreme Events is continuously rising decade after decade. It was 3 in the first three decades and 8 in the last three decades.

4. CONCLUSION

The detailed statistical analysis of annual as well as season-wise rainfall data of the past 12 decades shows very clearly that there is a drastic climate change over the years. The mean annual rainfall is 862.10 mm but there was a wider range in distribution of rainfall seasonally as well as annually as high as 874.98 mm and the annual rainfall exhibited a very high variance of 28,094.69 mm. The coefficient of variation observed was also higher ranging from 31.95 to 104.60. An analysis of Kurtosis showed Platykurtic distribution (negative kurtosis with lighter tail) of rainfall for the first 6 decades of the 19th century (1900-1960), whereas, it was Leptokurtic distribution (positive kurtosis with heavier tail) for the rest of the 6 decades. (1961-2021). Hence, the drastic climate change is clearly visible in Kurtosis analysis, when it turns from Platykurtic distribution in to Leptokurtic distribution, suggesting more number of extreme events in the later decades. These facts clearly portrays the profound effect of Climate change in Central Tamil Nadu. This calls for efficient climate resilient policy options viz., building resilience in soil, rainwater harvesting and recycling, water saving technologies, adapter cultivars and cropping systems, crop contingency plans, livestock and fishery intervention, weather based agro advisories and other institutional interventions, so as to increase the resilience of agricultural production to climate change in the central Tamil Nadu.

References

1. IPCC Climate Change: The Physical Science Basis. Contribution of Working Group I to the Sixth Assessment Report of the Intergovernmental Panel on Climate Change. Cambridge University Press, Cambridge, United Kingdom and New York, NY, USA; 2021.
2. Lobell DB, Cahill KN, Field CB. Historical effects of temperature and precipitation on California crop yields. *Climatic Change*. 2007; 81(2): 187-203.
3. Chaturvedi, R.K.; Jaideep Joshi, Mathangi Jayaraman, G. Bala and N. H. Ravindranath. Multi-model climate change projections for India under representative concentration Pathways. *Current Science*. 2012;103(7):1-12.
4. Kumar P, Sahu NC, Kumar S, Ansari MA. Impact of climate change on cereal production: Evidence from lower-middle-income countries. *Environ Sci Pollut Res*. 2021; 28(37): 51597-51611.
5. Sinha Ray K. C., Srivastava A. K. Is there any change in extreme events like drought and heavy rainfall?. *Current Science*. 2000; 79: 155-158.
6. Krishnamurti, T. N., Kumar, Vijay and Mitra, Ashis K. Seasonal Climate Prediction of Indian Summer Monsoon; In: *The Asian Monsoons*, Edited by Bin Wang; 2006.
7. Kunal N. Odedra and B. A. Jadeja, Rainfall Variability Trend in Porbandar, Gujarat, *Global Research in Environment and Sustainability*. April 2023 ; 1(2): 93-99.
8. Krishnamurthy, V. and Shukla, J. Intraseasonal and Seasonally Persisting Patterns of Indian Monsoon Rainfall. *Journal of Climate*; 2007;1: 3-20. doi : 10.1175/JCLI3981.1.
9. Varadan,R.J and Pramod Kumar. Mapping agricultural vulnerability of Tamil Nadu, India to climate change: a dynamic approach to take forward the vulnerability assessment methodology. *Climatic Change*. 2015; 129:159-181.
10. Kripalani R. H., Kulkarni A. Monsoon rainfall variations and tele-connections over South and East Asia. *International Journal of Climatology*. 2001; 21: 603-616.
11. Revadekar, J. V. and Preethi, B. Statistical Analysis of the Relationship between Summer Monsoon Precipitation Extremes and Food grain Yield over India. *International Journal of Climatology*. 2012; 32(3): 419-429. doi : 10.1002/joc.2282.
12. Balaganesh G, Ravinder Malhotra, Sendhil R, Smita Sirohi, Sanjit Maiti, Ponnusamy K and Adesh Kumar Sharma, (2020), "Development of Composite Vulnerability Index and District Level Mapping of Climate Change Induced Drought in Tamil Nadu, India", *Ecological Indicators*,2020; 113, pp. 106197 . DOI: <https://doi.org/10.1016/j.ecolind.2020.106197>.

Decadal Trends of Climate Change in Central Tamil Nadu – Implications for Climate Resilient Agriculture