

ABSTRACT

Tin mining in the period of its boom left large areas of land unsuitable for crop production. The financial benefits of tin mining were short-lived and cannot be quantified with the consequences of its devastation, which is still negatively impacting on the environment. Many of the devastated lands were abandoned due to soil infertility. Smallholder farmers are battling with restoring soil fertility for crop production. This study was conducted on smallholder farms in a devastated and abandoned area due to tin mining of the Bukuru-Rayfield, Sabon-Gida mining zone of Jos Plateau where contrasting organic interventions by farmers were observed. This was also confirmed by laboratory and geostatic spatial variation. A total of 35 Soil samples were taken at depth of 0-20cm, composed and analyzed in the laboratory. Continuous surfaces were later generated through geostatistics. Results indicated that organic matter had significant negative correlations with exchangeable acidity (-0.879), clay (-0.633) and silt (-0.616) but significant positive correlations with Potential of Hydrogen (pH) (0.885), Nitrogen (N) (0.991), P (Phosphorus) (0.954), K (Potassium) (0.911), Calcium (Ca) (0.920), Magnesium (Mg) (0.911) and sand (0.824). High concentration of pH, Organic Matter (OM), N, Av K, Ca, Mg and sand occurred in the NW of the study area (Farm A). In contrast, exchangeable acidity, silt and clay had less concentration in the NW of the study area (Farm A), with highest concentration in the W and SW parts (Farm C). Spatial variability from geostatistics indicated that all the soil variables had strong spatial dependency. The study unveiled that nutrients needed for higher productivity were made available by the smallholder farmer of farm A. This study will serve as advisory to smallholder farmers as a way of improving soil productivity in tin-devastated farmlands.

Keywords: reclamation, soil fertility, organic, variability, productivity, smallholder farmer,

1. INTRODUCTION

Abandoned lands as a result of tin mining have remained environmental challenges wherever they are found. These challenges vary from one degree to the other, based on the level and method of mining. In almost all cases, the productivity of the land is drastically reduced. While different approaches have been used to make useful abandoned mined-lands, such efforts seem to be futile in some places. It is these unproductive efforts that have left some places abandoned. In areas where agriculture is a major occupation, and where roads, buildings and other modernization have occupied lands, land for crop production remains a major challenge. In most cases, the lands are abandoned after some levels of management have failed. But still, leaving the lands to lie wasting only aggravates the challenge of food security. However, in some places successes have been recorded in restoring abandoned lands which are now agriculturally productive.

For any meaningful gain or productivity of derelict or highly degraded areas due to tin mining, reclamation is necessary. It majorly involves the return of degraded lands to productivity. Reclamation must address amongst others soil fertility and top soil management and nutrient cycling for the soil to gain and maintain productivity [1]. Making these abandoned lands physically, chemically, and biologically useful are the only way crops can be

grown. The natural amendments method through manure and compost which increases soil organic carbon content remains an important way [2]. This is because soil organic matters play key role in improving the physical, chemical and biological properties of abandoned soils [3][4].

Abandoned-mining areas are made up of two parts: the dry part (tailing) and watery part [5]. The tailings are either sand consisting of very coarse texture with no aggregation and profile development or slime consisting of very fine soils and minerals (silt and clay) with compacted structure [6]. These abandoned lands at post-mining are degraded with undulating and destructed landscape [7] with low soil fertility status. These tailings have much sand, low clay, low soil pH, low organic matter content, low cation exchange capacity (CEC), low water-holding capacity and very low essential macro-elements. A similar submission of tailings with nutrient deficiency, lacking organic matter, low pH, and high acidity were submitted by [8][9].

The overburden dumps characterizing abandoned mined-lands are mostly deficient in the three major macronutrients (N, P and K)[10], due to poor organic matter in such unfertilized soils [11]. This is proven by the positive correlation between organic carbon with available N and K [12]. Consequently, for both old and new abandoned mined-soils to be productive, it will require significant organic fertilizer intervention. Mostly, these interventions will span for years before reclamation is actualized and plants begin to be well nourished. A similar submission was made by [13] where for the first two years of reclamation, nitrification rates in reclaimed sites remained less than those in undisturbed areas, but approached the level of undisturbed areas after two years. It means that to be able to realize meaningful outcome of reclamation on derelict areas, organic intervention must go on for about five years and above.

Going further, [14] reported that sawdust and sewage sludge are recognized as effective short-term fertilizers and sources of long-term slow release of nitrogen needed for improving productivity in abandoned mine-lands. Another approach to reclaiming productivity on abandoned mined-sites is the planting of legumes.[15] opined restoration through N-fixing species of legumes, grasses, herbs and trees, followed by the assessment of such reclamation of management plan after some years to establish productivity of the land. This can be done by measuring the soil productivity by interactions between C and nutrient availabilities.

1.1 Tin Mining on the Jos Plateau

Different submissions have been made about the evolution of tin and allied metals mining on the Jos Plateau. It is believed that the practice is over 100 years starting around 1902, and according to [16], extraction and smelting of tin in Northern Nigeria began as long as 900 BC, but remained a small-scale local activity until 1904 when exploitation by Niger Company found its source to be in the alluvium of rivers draining the granite complexes of the Jos-Bukuru-Ropp area of the Jos Plateau. Commercial mining began immediately and peaked in 1943 with production reaching 15, 842 tons and began declining to about 1264 tons in 1984, and almost completely ceased in 1985 with the collapse in International Tin Agreement.

The failure to regulate tin mining activity for about a century has left marks on the landscape of the Jos Plateau with consequential environmental effect. These wastes from tin mining are mainly the mine ponds, overburden

Comment [DAL1]: Very long introduction!
Please give an essential information!

(mine spoil) and processing mill wastes [17]. Through mining activities, surface materials on the earth are removed and piled over unmined land making chains of external dumps referred to as mine spoils and wastelands, which are common on the Jos Plateau. The productive surface materials (fertile soils) are either removed and piled or are covered beyond agricultural productivity. Specifically, [18] estimated derelict landscape of about 316 km² of the Plateau, though just about 4% of the Plateau yet is concentrated along a narrow axis from Jos to Ropp.

But earlier report by [19] in [20] indicated that spoil hills occupied about 325 km² (about 41%) of the Jos Plateau, while the area destroyed which is about 267 km² is characterized by mining paddocks and tin tailings. The tin mining exploitation involves separating the ores, heavy sand fraction (density > 4 g cm⁻³), from the clay, silt and light sand fractions. Once the ore is extracted, the remaining bulk of material (spoils and tailings) are dumped and they cumulatively increase with time as the mining progresses [21][22].

As earlier pointed out, the period of boom was followed by a sharp decline in production, leaving the inhabitants with no source of livelihood [23]. This is even as falling back on the original occupation of farming is challenged by the degraded land. Even without laboratory soil tests, colors of most mined soils which are bright red and brown indicates materials are oxidized and leached beyond the reach of crops. They are also lower in pH and free salts, less fertile, and more susceptible to physical weathering as indicated by the level of devastation. The aim of reclamation is to have as reported by [1] very dark gray mined-soils as evidence of organic materials. More benefits of organic matter in the mined-soil include improving soil structure, reducing erosion, increasing infiltration and water holding capacity.

1.2 Literature Review

[24] explored the socio-ecological changes perceived by a local community in Bangka Island, Indonesia at pre and post large-scale tin mining. They found that both economic and local socio-political factors influenced the local community's acceptance of suction dredging. Compensation provided a compelling reason to agree to license mining activity.

Also, [25] developed a conceptual framework to serve as a basis for creating a suitable design of an abandoned mining area. They reported that land reclamation strategies through landscape development alongside mining plan for effective restoration after mining operation ceases.

Furthermore, [17] examined the reclamation needs of tin fields of the Bukuru-Rayfield environs on the Jos Plateau, and revealed that some devastated lands would require reclamation/rehabilitation, while others will not be subjected to reclamation as some of the areas are already being put to useful socio-economic uses such as recreation, agriculture, and water supply for domestic and industrial uses. In addition, [26] reported results confirming soil productivity when wood residue was used for spoil amendment. Such amendment of wood residue with N increased the effects of fertilizers such as N, P, K.

Productivity of soil can be increased by adding various natural amendments such as saw dust, wood residues, sewage sludge, animal manures, as these amendments stimulate the microbial activity which provides the nutrients (N, P) and organic carbon to the soil. The top soil gets seriously damaged during mineral extraction.

Management of top soil is important for reclamation plan to reduce the N losses and to increase soil nutrients and microbes. "The challenge for agriculture in the world today is to meet the world's increasing demand for food in a sustainable way and declining soil fertility and mismanagement of plant nutrients have made this task more difficult" [27].

Record has shown that in some places where challenges of low productivity are observed on post tin mining environments, reclamation are made organically through amendments with hay, sawdust, bark mulch, wood chips, wood residues, sewage sludge, animal manures as they stimulate the microbial activity (bacteria and mycorrhiza), which provides the nutrients (N, P) and organic carbon to soil. It is common to see soil properties of tin mine tailings with very low fertility leading to lower productivity as they lack the adequate amount of nutrients to support plant optimal growth and yield [28]. This study was therefore conducted to unveil soil fertility variation across three adjoining smallholder farms due to varied organic intervention and advice accordingly for higher crop productivity.

2. STUDY AREA

The study area is located within latitudes 9° 45' 8"N and 9° 45' 11" N and longitudes 8° 51' 47" E and 8° 51' 50" E in Plateau State (Fig. 1). It is located within a tropical environment with an almost temperate weather. It experiences orographic rainfall due to the high relief from mountainous domination. Rain season commences from April to October with peaks in August, but now shifting to September and ceases by October. The area has a mean monthly temperature range of 20-24°C and annual total rainfall of 1400mm which falls primarily from April to October [29]. Tin mining was a progressive business there during the tin boom, but later failed due to failure in global tin market. Local and crude tin mining is taking place on the Jos Plateau due to resurgence of tin and allied products market. Mining zones as delineated by [30] include:

- a. The first zone which consists of the congested Jos-Naraguta South-Eastern Bassa mining zone. This is the earliest area of tin mining activities on the Jos Plateau. As a result of increased population, urbanization and intense land use competition, the zone was declared by the State and Federal government a "congested area" and further mining barred.
- b. The second is Bukuru-Rayfield, Sabon-Gida mining zone which is characterized by mounds of mine tips. The main features here are mining ponds, abandoned mining sites and partly deserted mining settlements with several pilot ponds.
- c. The third zone comprises the Barkin-Ladi, Bisichi, Ropp-Dorowa mining area. This zone, like zone (b) above, is a contemporary one which is characterized by the use of heavy and deep mining equipment. The dominant crops cultivated in the study area are maize, Irish potato and sweet potato.

This study area falls under the Bukuru-Rayfield, Sabon-Gida mining zone.

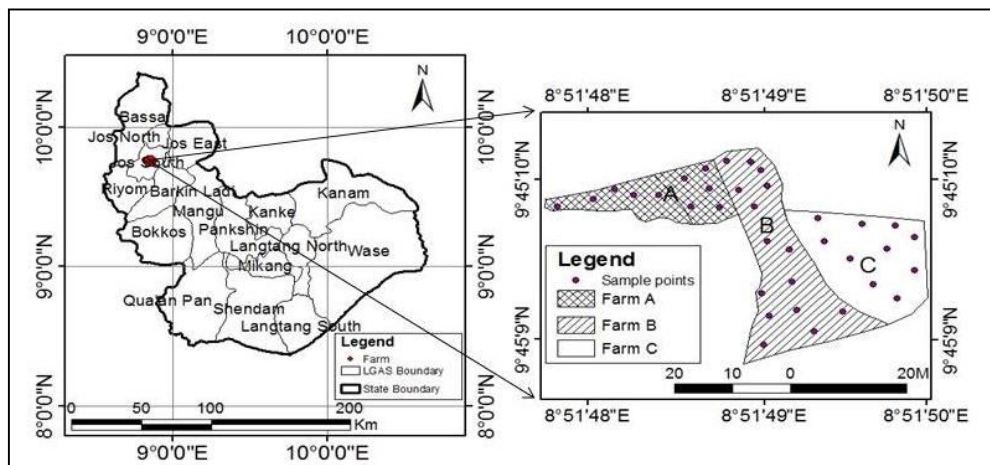


Fig. 1 Plateau State showing the Study Area

Comment [DAL2]: Could be interesting for Material and Method

2.1 MATERIALS AND METHODS

2.1.1 Soil laboratory analysis

Soil samples at 0-20cm depths were taken, composed and analyzed in the laboratory for primary nutrients (N, P, and K), secondary nutrients (Mg and Ca), pH, Organic Matter (OM), $H^+ + Al^{3+}$ and soil texture (sand, silt and clay). The method of laboratory test is indicated in Table 1.

Table 1. Soil Properties and method of laboratory test

S/N	Variable	Method
1	pH (value)	Glass electrode pH meter [31].
2	OM (%)	Walkley-Black wet oxidation method [32].
3	TN (%)	Micro-Kjeldahl digestion method [33].
4	Av P (ppm)	Mehlich 3 extraction procedure [34], read with ICP-OEC.
5	Ca (ppm)	EDTA titration method [35].
6	Mg (ppm)	EDTA titration method [35].
7	Av K (ppm)	Mehlich 3 extraction procedure [34], read with ICP-OEC.
8	$H^+ + Al^{3+}$ (cmol/kg)	Shaking soil with 1N KCl & titration with 0.5N NaOH[36].

2.2 Data Analysis

Statistical analysis was done on the primary data using Microsoft excel, SPSS and ArcGIS 10.3.

2.2.1 Correlation analysis

Correlation analysis was carried out to unveil the relationships between the different soil properties interacting to determine soil productivity on smallholder farms.

2.2.2 Geostatistics

Geostatistics was used to model surfaces for the different soil properties tested in the laboratory. This was based on the best-fitted models used to determine the optimal semivariograms. Nugget (C₀), partial sill (C), range (A), sill (C + C₀), and nugget/sill ratio were extracted from the suitable semivariograms of the fitted models. Determination of spatial-dependence of the soil properties was done according [37][38][39]. If the nugget/sill ratio is <25, the dependence is strong; between 25 and 75% is moderate, while >75% was said to be weak.

Geostatistics assumes spatial data analysis with the most common spatial tool variogram (Eq. i).

$$2\gamma(h) = \frac{1}{N(h)} \times \sum_{n=1}^{N(h)} [z(u_n) - z(u_n + h)]^2 \quad (i)$$

where:

N(h) = number of data pairs at distance "h" (inside searching neighbourhood area)

z(u_n) = value at location u_n

z(u_n+h) = value at location u_n+h.

Calculation of experimental variogram is necessary input for different geostatistical interpolation like kriging (Eq.ii).

$$\bar{z}_k = \sum_{i=1}^n \lambda_i \times z_i \quad (ii)$$

Where:

Z_k = points estimated by Kriging

λ_i= weight coefficient for Kriging

Z_i = data of primary variable (inside searching neighborhood area) [40].

For accuracy of interpolated surfaces, the RMSSE value should be close to 1 and the ME value close to 0 [41].

3. RESULTS AND DISCUSSION

3.1 Relationship between Soil Properties

Using the ranges of correlations by [42], values between 0.9 and 1.00 are regarded as very highly correlated, between 0.7 and 0.9 as highly correlated, 0.5 to 0.70 as moderately correlated, between 0.25 and 0.50 as low correlation while values less than 0.2 have little correlation.

Significant positive correlations occurred between pH and N, K, P, Ca, Mg, OM and sand but significantly negatively correlated with exchangeable acidity, clay and silt. In like manner, significant positive correlations occurred between N and K, P, Ca, Mg, OM and sand but significantly negatively correlated with exchangeable acidity, clay and silt. Likewise, significant positive correlations occurred between K and P, Ca, Mg, OM and sand but significantly negatively correlated with exchangeable acidity, clay and silt.

Significant positive correlations also occurred between P and Ca, Mg, OM and sand, but significantly negatively correlated with exchangeable acidity, clay and silt. Calcium had significant positive correlations with Mg and sand, but significantly negatively correlated with exchangeable acidity, clay and silt. Magnesium had significant positive correlations with sand, but had significant negative correlations with exchangeable acidity, clay and sand. Organic matter had significant negative correlations with exchangeable acidity, clay and silt but significant positive correlations with pH, N, P, K, Ca, Mg and sand. Exchangeable acidity had significant positive correlations with silt and clay (Table 2).

Table 2. Correlation between soil properties (0-20cm)

	pH	N	K	P	Ca	Mg	OM	H ⁺ +Al ³⁺	Clay	Silt	Sand
pH	1										
N	.907**	1									
K	.926**	.935**	1								
P	.914**	.944**	.944**	1							
Ca	.751**	.902**	.855**	.835**	1						
Mg	.871**	.925**	.905**	.954**	.889**	1					
OM	.885**	.991**	.911**	.919**	.920**	.911**	1				
H ⁺ +Al ³⁺	-.928**	-.890**	-.893**	-.862**	-.777**	-.843**	-.879**	1			
Clay	-.551**	-.609**	-.675**	-.492**	-.804**	-.592**	-.633**	.582**	1		
Silt	-.845**	-.633**	-.681**	-.607**	-.382*	-.500**	-.616**	.760**	.323	1	
Sand	.855**	.815**	.872**	.739**	.845**	.754**	.824**	-.835**	-.881**	-.706**	1

** Correlation is significant at the 0.01 level (2-tailed).

* Correlation is significant at the 0.05 level (2-tailed).

pH (value)=Acidity; OM (%)=Organic Matter; TN (%)=Total Nitrogen; Av P (ppm)= Available Phosphorus; Ca(ppm)=Calcium; Mg (ppm)=Magnesium; Av K (ppm)=Available Potassium; H⁺ + Al³⁺ (cmol/kg)=Exchangeable acidity; Sand (%); Silt (%), Clay (%).

3.2 Geostatistics Spatial Variability of Soil Properties

The geostatistics of analyzed soil parameters are as indicated (Table 3.). The exponential model was best fitted for pH, OM, TN, Av K, exchangeable acidity, sand and clay forming about 64% of soil properties tested, while Av P, Ca, Mg, and silt were best suited with stable model forming 36% of the soil properties tested in the laboratory. The dominance of the exponential semivariogram model for the soil properties is in consonant with [43] who proved that exponential model is appropriate for assessing spatial variability for soil properties. The nugget for pH, OM, TN, Av P, Av K, exchangeable acidity, sand and clay at 0 are evidences of absence of error in distribution of sample points as well as absence of measurement error.

The small nugget effects zero nugget effects indicates spatial continuity between sampling points. The small nugget effect for Ca, Mg, and silt are due to measurement errors and sampling at distances smaller than the sampling interval. All the soil variables indicated strong spatial dependency.

Table 3. Geostatistics of soil properties (0-20cm)

Variable	Model	Nugget (Co)	Partial Sill(C)	Sill (Co+C)	Nugget/Sill (%)	Spatial Class	Range (m)
pH (value)	Exponential	0	1	1	0	Strong	71.13
OM (%)	Exponential	0	1.639	1.639	0	Strong	71.13
TN (%)	Exponential	0	0.0045	0.0045	0	Strong	71.13
Av P (ppm)	Stable	0	0.750	0.750	0	Strong	71.13
Ca (ppm)	Stable	0.0006	0.0855	0.0861	0.70	Strong	71.13
Mg (ppm)	Stable	0.0005	0.0428	0.0433	0.01	Strong	71.13
Av K (ppm)	Exponential	0	0.3850	0.3850	0	Strong	71.13
H ⁺ + Al ³⁺ (cmol/kg)	Exponential	0	0.0761	0.0761	0	Strong	71.13
Sand (%)	Exponential	0	13.15	13.15	0	Strong	71.13
Silt (%)	Stable	0.215	2.993	3.208	0.067	Strong	22.22
Clay (%)	Exponential	0	1.1622	1.1622	0	Strong	13.34

pH=potential of hydrogen, OM=Organic Matter, N=Nitrogen, P=Phosphorus, Ca=Calcium, Mg=Magnesium, K=Potassium, H⁺=Exchangeable acidity.

3.3 Krigged Surfaces of Soil Property Distribution

The krigged surfaces of the soil properties in the study area indicate similarity of distribution in some cases and dissimilarity in other cases (Figs. 2-12). For pH, OM, N, Av K, Ca, Mg, Av K (Fig. 2-8 and sand (Fig 10), there was high concentration of tested properties in the NW of the study area (Farm A) with decreasing concentration in the middle of the study area (Farm B) and least concentration in the and SW (Farms B and C). In contrast, exchangeable acidity (Fig. 9), silt and clay (Figs. 11-12) had less concentration in the NW of the study area (Farm A), but increases in the center of the study area (Farm B) with highest concentration in the W and SW parts (Farms B and C) of the study area.

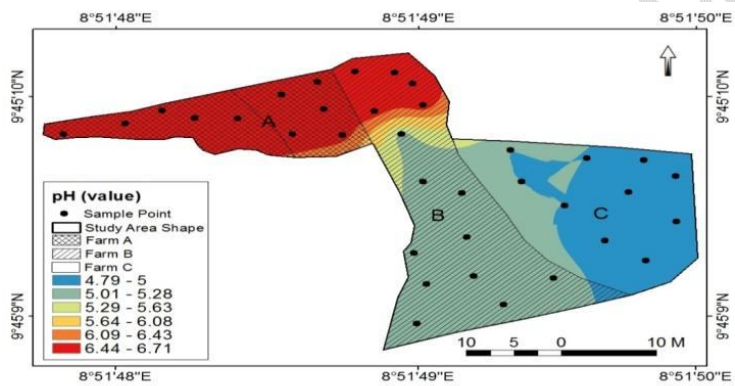


Fig 2. Surface distribution of pH

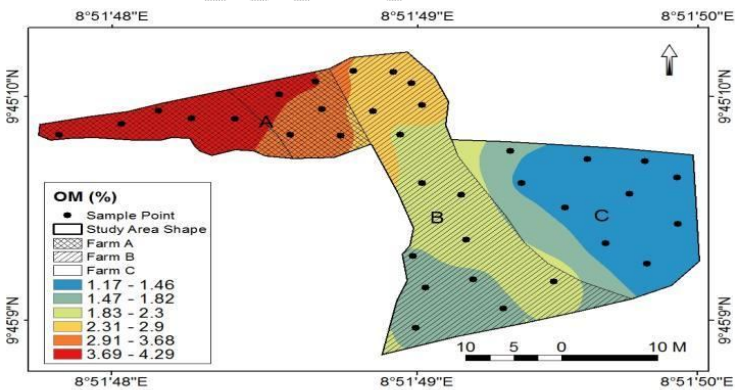


Fig 3. Surface distribution of PH

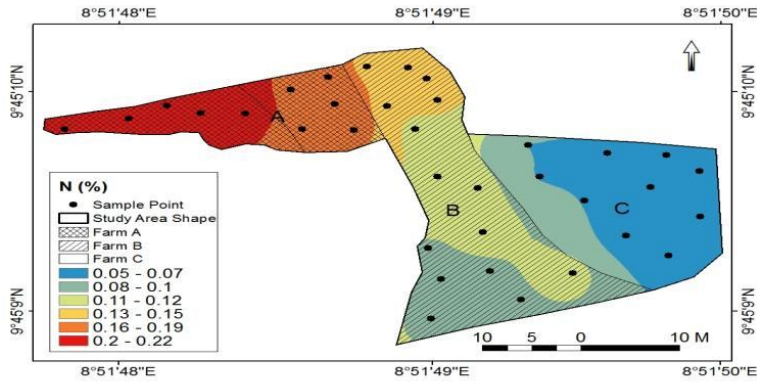


Fig 4. Surface distribution of TN

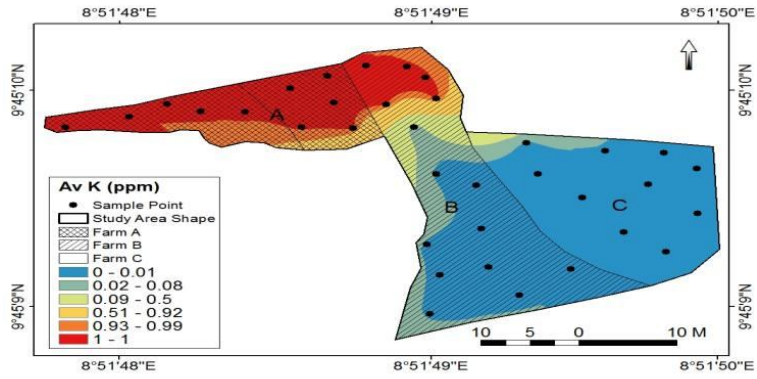


Fig 5. Surface distribution of Av K

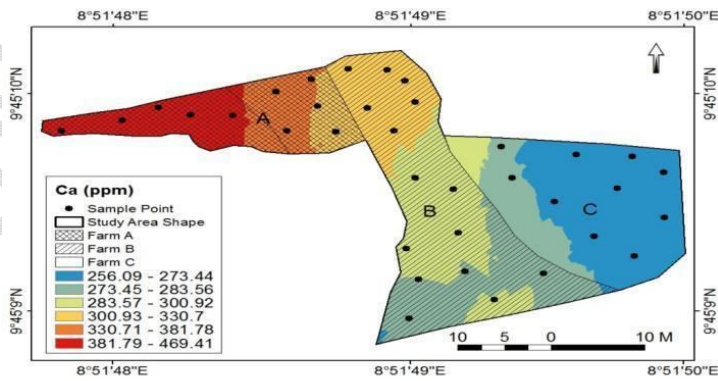


Fig 6. Surface distribution of Ca

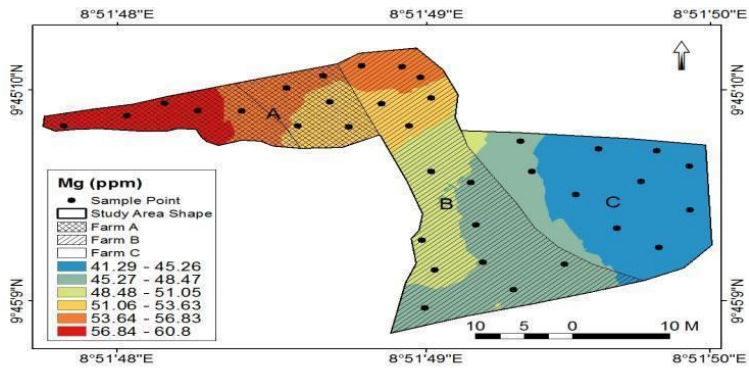


Fig 7. Surface distribution of Mg

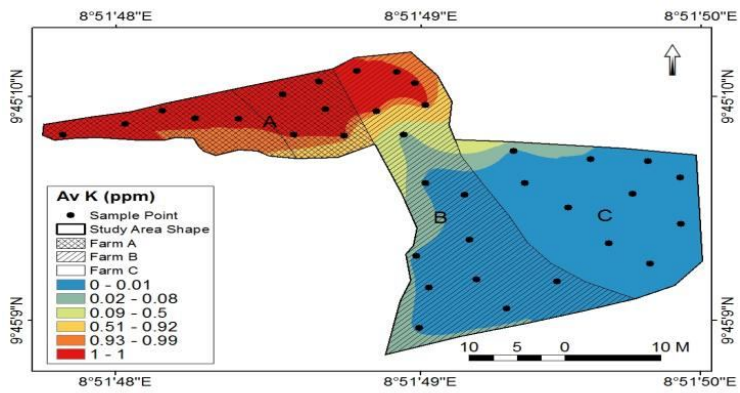


Fig 8. Surface distribution of Av K

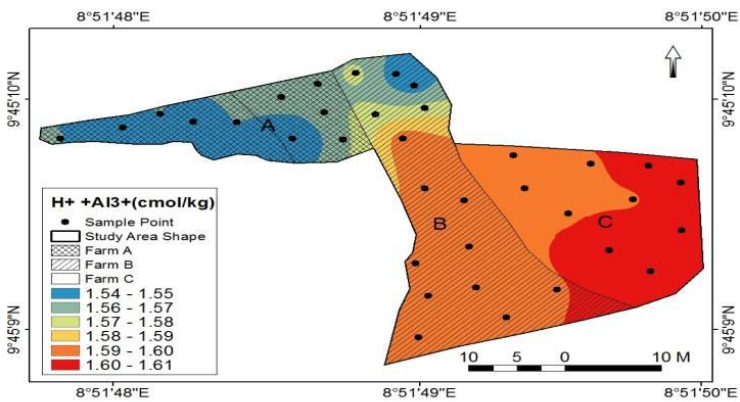


Fig 9. Surface distribution of $H^+ + Al^{3+}$

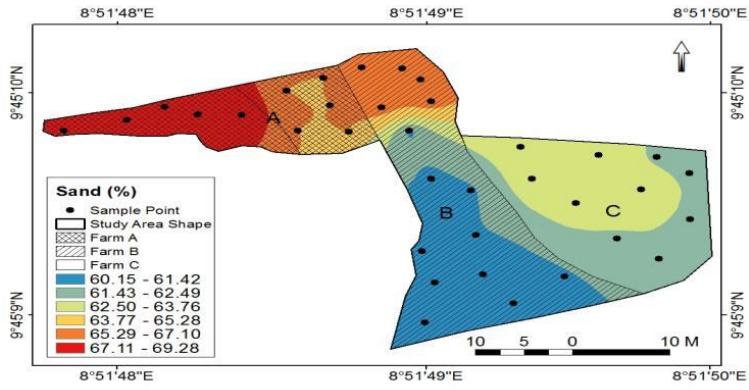


Fig 10. Surface distribution of Sand

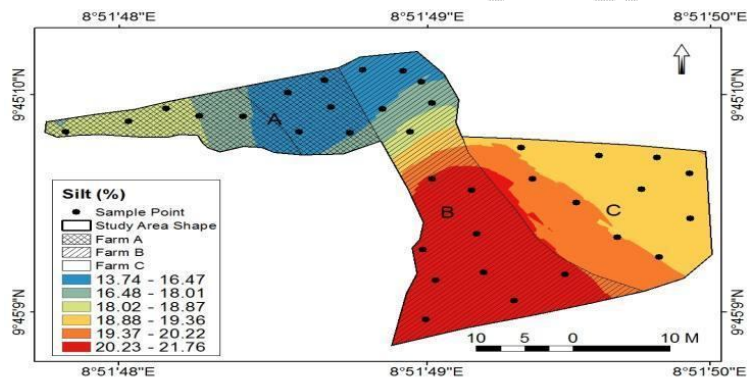


Fig 11. Surface distribution of Silt

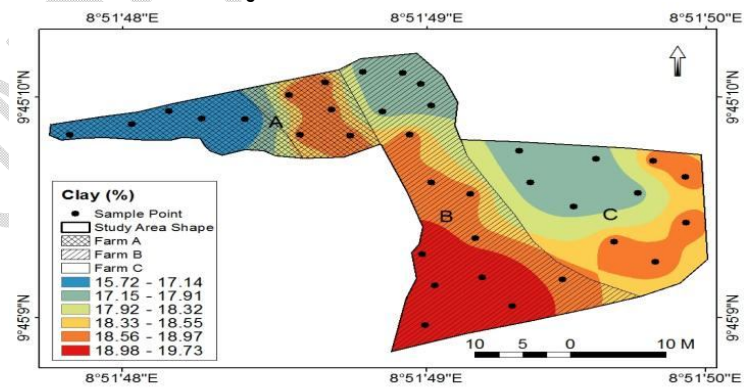


Fig 12. Surface distribution of Clay

3.4 Accuracy Assessment of the Predicted Model

The best fit models were assessed using the Mean Error (ME) and Mean Root Square Standardized Error (RMSSE). They were used in assessing the accuracy of krigged soil variables generated [41]. Variability is likely overestimated if the root-mean-square standardized error is less than one. Variability is likely underestimated if the root-mean-square standardized error is greater than one [44]. Table 4 showed that the RMSSE for pH, OM, TN, Ca, v K, and clay were overestimated while Mg, silt and $H^+ + Al^{3+}$ were underestimated. For the ME, all the soil properties were close 0, though $H^+ + Al^{3+}$, silt and clay were negative.

Table 4. Accuracy assessment of krigged soil properties

S/N	Variable	ME	RMSSE
1	pH (value)	0.0058	0.5834
2	OM (%)	0.0039	0.4590
3	TN (%)	0.0003	0.509
4	Av P (ppm)	0.0053	5.036
5	Ca (ppm)	0.034	0.830
6	Mg (ppm)	0.053	1.470
7	Av K (ppm)	0.0038	0.613
8	$H^+ + Al^{3+}$ (cmol/kg)	-0.001	1.405
9	Sand (%)	0.016	0.6098
10	Silt (%)	-0.030	4.682
11	Clay (%)	-0.026	0.559

3.5 DISCUSSION

3.5.1 Relationship between soil properties for crop productivity

The negative correlation between pH and exchangeable acidity shows that an increase in soil pH helps reduce acidic cations (H^+ and Al^{3+}) on the soil colloid, thereby favoring the availability of plant nutrients [45]. Again, pH showed positive correlation with N, negative correlation with P, Ca and Mg agreeing with report by [46]. Due to the nature of calcium cation, calcium is positively correlated with pH [47]. Positive correlations between organic matter with total nitrogen, available phosphorus, exchangeable cations (Mg, Ca, and K) indicate that they are important soil nutrients [48][49].

The increase in soil organic matter influencing most soil properties shows the influence of organic matter on physical and chemical factors affecting biological activity [50]. The significantly positive correlation between OM and TN agrees with [51] and is due to the release of mineralizable nitrogen from soil organic matter [52], as

positive relationship is always expected between TN and OM. The acidulating effect OM and release of Av P in organic matter and the reduction of Av P fixation by humus could cause the significant positive relationship between OM and Av P. This concurs with the findings of [53][54]. Similarly, significant positive correlations were reported between OC and N, P, K [55][56]. TN strongly positively correlated with Ca and Av P. Av P strongly correlated with Ca and K [57][46].

The significant negative correlation between silt and clay is similar to that reported by [58] but contrary to positive correlation reported by [59]. The negative correlations between pH and silt and pH and clay are as reported by [59]. The negative correlation between OM with clay and with sand is as reported by [59]. pH and sand positive correlation is also as reported by [59]. Clay is negatively correlated with OM and N concurring with report by [59]. pH had negative correlations with exchangeable acidity also concurring with the findings of [60]. Clay which negatively correlated with P and K but positively correlated with exchangeable acidity also agrees with [60].

OM positively correlated with P, K, Ca, Mg and exchangeable acidity is in line with the findings of [60]. The pH which positively correlated with OM, TN, AP, Na, Ca, Mg is in line with the submission of [57]. So also OM is positively correlated with TN, AP, K, Ca, and TN is positively correlated with AP, K, Ca, Mg are according to [57]. In situations where very low significant correlations were established, it means the variation in soil properties are uncontrolled in the area cultivated by smallholder farmers due to the tin mining hazard [41][61].

3.5.2 Factors influencing soil spatiality

The nugget and spatial sill in Table 3. for best-fit models shows variation due to anthropogenic factors like wrong fertility management, technique of cropping and other human influences [61]. The nugget/sill ratio showed that all the soil properties were strongly spatial dependent (Table 3.). The strong spatial dependent of all the soil properties tested are due to intrinsic factors. Climate, parent material, topography, and other natural factors, played major roles in the soil properties spatial variability [62][63]. The large and small ranges of soil properties on smallholder farms are due to a combination of farmers' intervention and natural factors [64].

3.5.3 Management Recommendations

[65] recommended a sectorial management of some areas of Morocco based on predictive spatial variation of some soil variables; the variation across the study area was glaring. In this study, smallholder Farm A indicated a tendency of high soil nutrient, smallholder Farm B showed a moderate tendency, while smallholder Farm C showed a naturally poor tendency of soil nutrients based on organic interventions. It clearly shows the inadequate organic interventions in Farms B and C. This study will serve as advisory to smallholder farmers especially those existing side by side with similar physical, chemical and biological properties as a way of improving soil productivity in devastated farmlands. This indeed will improve crop yield thereby improving food security.

Comment [DAL3]: Must be documented!

4. CONCLUSION

This study observed that geostatistics' predicted surfaces were able to capture fertility of smallholder farms exactly as recognized by the smallholder farmers. It again unveiled that nutrients needed for higher productivity were

made available by smallholder farmer A. therefore farms B and C smallholder farmers can replicate the farming practices adapted by smallholder farmer A to improve soil productivity and enhance crop yield. This is because most agronomic practices that are quantitative come in ways that smallholders lack the capacity to scale down as required. With the introduction of sludge in farms B and C, soil productivity is gradually improving as observed by the team of this researchers as well as the yield realized practically by the smallholder farmers.

References

1. Sheoran V, Sheoran, A. S, Poonia, P. Soil reclamation of abandoned mine land by revegetation: A Review. *International Journal of Soil, Sediment and Water*: 2010;3(2), Article 13.
2. Ding XL, Han XZ, Liang Y, Qiao YF, Li LJ, Li N. Changes in soil organic carbon pools after 10 years of continuous manuring combined with chemical fertilizer in a Mollisol in China. *Soil Till Res.*2012;122:36-41.
3. Ouedraogo, E., Mando, A., Brussaard, L., & Stroosnijder, L. Tillage and fertility management effects on soil organic matter and sorghum yield in semi-arid West Africa. *Soil Till Res.*2007; 94, 64-74.
4. Akala VA, Lal R. Potential of mine land reclamation for soil organic carbon sequestration in Ohio. *Land Degrad. Dev.* 2000;11, 289-297.
5. Sujitno, S. History of tin in Bangka Island. PT. Timah. Pangkalpinang. Indonesia. (in Indonesian);2007.
6. Ashraf MA, Maah MJ, Yusoff I. Evaluation of natural phytoremediation process occurring at extirminating catchment. *Chiang Mai J Sci.*2013; 40, 198-213.
7. Sengupta M. Environmental impacts of mining: monitoring, restoration and control. Boca Raton, Florida: Lewis Publisher;1993.
8. Titshall LW, Hughes JC, Bester HC. (2013). Characterization of alkaline tailings from a lead/zinc mine in South Africa and evaluation of their revegetation potential using five indigenous grass species. *S Afr J Plant Soil.*2013;30,97-105.
9. Chaturvedi N, Dhal NK, Reddy PSR. (2012). Comparative phytoremediation potential of *Calophyllum inophyllum* L., *Bixa orellana* L., and *Schleichera oleosa* (Lour.) Oken on iron ore tailings. *International Journal Mineral Reclam Environ.*2012; 26,104-118.
10. Sheoran AS, Sheoran V, Poonia P. (2008). Rehabilitation of mine degraded land by metallophytes. *Mining Engineers Journal.*2008; 10 (3), 11-16.
11. Donahue RL, Miller RW, Shickluna J.C. *Soils: An introduction to soils and plant growth* (5th ed.). Prentice-Hall;1990.
12. Maiti SK, Ghose MK. Ecological restoration of acidic coal mine overburden dumps- an Indian case study. *Land Contamination and Reclamation.*2005; 13(4), 361-369.
13. Davies R, Hodgkinson R, Younger A, Chapman R. (1995). Nitrogen loss from a soil restored after surface mining. *Journal Environmental Quality.*1995;24, 1215-1222.
14. Sydnor MEW, Redente EF. (2002). Reclamation of high-elevation, acidic mine waste with organic amendments and topsoil. *Environ. Qual.* 2002;31,1528-1537.
15. Rosyida I, Ullah W, Helmia A, Sasaoka M. (2013). Adapting livelihoods to the impacts of tin mining in Indonesia: Options and constraints. *The Extractive Industries and Society.*2013; 6, 1302-1313.
16. Jos Museum (1979). The history of tin mining in Nigeria. Fed. Dept. Antiquities, National Museum, Jos.
17. Mallo SJ, Wazoh HN. (2014). Reclamation of abandoned mined-out areas of Bukuru-Rayfield. *Journal of Environmental Science, Toxicology and Food Technology (IOSR-JESTFT).*2014; 8(2), 25-34.
18. Hill I. (ed.) (1978). Land resources of central Nigeria. Agricultural development possibilities. Vol. 2B. The Jos Plateau. Land Resourc. Div. Dir. Overseas Survey Land Resourc. Study 29.
19. Howard WJ. Central Nigeria Project: Rehabilitation of Tin Mining Land on the Jos Plateau. L.R.D (land reclamation and development) report.(1975).
20. Gyang JD, Ashano EC. Effects of mining on water quality and the environment: A case study of parts of the Jos Plateau, North Central Nigeria." *Pacific Journal of Science and Technology.*2010;11(1), 631-9.
21. Dudka S, Adriano DC. Environmental impacts of metal ore mining and processing: a review. *Journal of Environmental Quality.*1997; 26,590-602.

22. Ozkan S, Ipekoglu B. Investigation of environmental impacts of tailings dams. *Environmental Management and Health*.2002;13, 242-248.
23. Wapwera SD, Ayanbimpe GM, Odita CE. Abandoned mine, potential home for the people: A case study of Jos Plateau tin-mining region. *Journal of Civil Engineering and Architecture*.2015; 9,429-445.
24. Rosyidaal, Sasaoka M.Local political dynamics of coastal and marine resource governance: A case study of tin-mining at a coastal community in Indonesia. *Environmental Development*. 2018;26,12-22.
25. Emmamoge O, Ayodele O, Sada Z. Landscape reclamation for abandoned mining site for outdoor recreation on the Jos Plateau. *Journal of Environmental Sciences and Resources Management*. 2020;12(2),26-50.
26. Gitt MJ, Dollhopf DJ. 1991. Coal waste reclamation using automated weathering to predict lime requirement. *Journal Environmental Quality*.1991;20,285-288.
27. Yaser H, Rahim DT. Comparison of phosphorus adsorption isotherms in soil and its relation to soil properties. *International Journal of Agricultural Research Reviews*.2013;3:163-171.
28. Ali AD, Habila S, Isiwu NC, Osaji KJ, Nyam DD. Effects of tin mine tailings on the growth and development of common Bean (*Phaseolus vulgaris* L.) in Jos, Nigeria. *Journal of Agriculture and Ecology Research International*. 2019;19(1):1-7.
29. Alexander MJ, Kidd AD. Farmers' capability and institutional incapacity in reclaiming disturbed Land on the Jos Plateau, Nigeria. *Journal of Environmental Management*.2000;59:141-155.
30. Ndace JS, Danladi MH. (2012). Impacts of derived tin mining activities on landuse/landcover in Bukuru, Plateau State, Nigeria. *Journal of Sustainable Development*.2012;5(5):90-100.
31. Gee WG, Or, D. Particle-size analysis. p. 255–293. In: Dane, J., and G.C. Topp (eds.). *Methods of Soil Analysis*. Book Series: 5. Part 4. Soil Science Society of America. USA;2002.
32. Walkley A, Black IA. An examination of the Degtjareff method for determining soil organic matter, and a proposed modification of the chromic acid titration method. *Soil Science*.1934;37:29-38.
33. Bremner JM. Nitrogen-total. In D.L. Sparks et al (ed.) *Methods of soil analysis*. Part 3. SSSA Book Ser. 5. SSSA, Madison, WI;1996.
34. Mehlich, A. (1984). Mehlich 3 Soil test extractant: A modification of the Mehlich 2 extractant. *Commun Soil Sci Plant Anal*. 1984;15,1409–1416.
35. Tucker, B. B., & Kurtz, L. T. Calcium and Magnesium Determinations by EDTA Titrations. *Soil Science Society of American Journal*.1961;25:27-29.
36. Anderson JM, Ingram JSI. *Tropical soil biology and fertility. A handbook of methods*. CAB international. Walling-ford, UK, p. 35 2nd edition;1993.
37. Cambardella CA, Moorman, T. B., Novak, J. M., Parkin, T. B., Karlen, D. L., Turco, R. F., & Konopka, A. E. Field-scale variability of soil properties in central Iowa soils. *Soil Science Society of American Journal*. 1994;58:1501–1511.
38. Ersahin S. Alluvial soil in a field, some physical and chemical properties of the spatial variability of the determination. *SU Journal of the Faculty of Agriculture*.1999;13:34–41.
39. Robertson GP. Geostatistics in ecology: Interpolating with known variance. *Ecology*.1987;68:744–748.
40. Malvi T, Ivsinovi J, Veli J, Raji R. Kriging with a Small Number of Data Points Supported by Jack-Knifing, a Case Study in the Sava Depression (Northern Croatia). *Geosciences*. 2019; 9,36.
41. Wang B, Liu GB, Xue S, Zhu BB. Changes in soil physico-chemical and microbiological properties during natural succession on abandoned farmland in the Loess Plateau. *Environ. Earth Sci*.2011;62:915–925.
42. Abdul, R. (2017). Interpretation of Correlation Coefficients. Accessed April, 2020. Available <http://www.dummies.com/education/math/statistics/how-to-interpret-a-correlation-coefficient-r/>
43. Reza SK, Sarkar D, Baruah U, Das TH. (2010). Evaluation and comparison of ordinary kriging and inverse distance weighting methods for prediction of spatial variability of some chemical parameters of Dhalai district, Tripura. *Agropedology*. 2012;20 (1),38–48.
44. ITRC (2016). Geospatial analysis for optimization of at environmental sites (GRO-1). Washington D.C interstate technology and regulatory council, Geostatistics for remediation optimization team. www.itrcweb.org/gro-1
45. Mofor NA, Tamungang EBN, Mvondo-ze AD, KomeGK, Mbene K. Assessment of physico-chemical and heavy metals properties of some agricultural soils of Awing-North West Cameroon. *Archives of Agriculture and Environmental Science*.2017;2(4):277-286.
46. Bhat ZA, Padder SA, Ganaie AQ, Dar NA, Rehman HU, Wani MY. Correlation of available nutrients with physico-chemical properties and nutrient content of grape orchards of Kashmir. *Journal of Pharmacognosy and Phytochemistry*.2018;6(2):181-185.
47. Medhe SR, Takankhar VG, Salve AN. Correlation of chemical properties, secondary nutrients and micronutrient anions from the soils of Chakurtahisil of Latur district, Maharashtra. *Trend. Life Sci*. 2012;1(2):34-40.

48. Plante AF, Conant RT, Steward CA, Paustian K, Six J. (2006). Impact of soil texture on the distribution of soil organic matter. *Soil Sci. Soc. Am. J.* 2006;70:287–296.
49. Najmadeen HH, Mohamed-Amin, HH, Mohammad A. (2010). Effects of soil texture on chemical compositions, microbial populations and carbon mineralization in soil. *Egypt J Exp Biol Bot.* 2010;6(1):59-64.
50. Jalal E, Ahmad GA. Influence of soil organic matter content on soil physical, chemical and Biological properties. *Int J Plant Anim Environ Sci.*2014;4 (4):244-252.
51. Cao LH, Liu HM, Zhao SW. Relationship between carbon and nitrogen in degraded alpine meadow soil. *African J Agric. Res.* 2012;7:3945-3951.
53. Ayele T, Tanto T, Ayana M. Rating and correlating physicochemical properties of eutricvertisols in Abaya Chamo lake basin, South-west Ethiopia. *Int. J Agron Plant Prod.* 2013;4:3559-3568.
54. Singh S, Bhat ZA, Rehman HU. Influence of organic and integrated nutrient management on physico-chemical properties of soil under basmati-wheat sequence. *The Bioscan.* 2014;9(4):1471-1478.
55. Patel PL, Patel NP, Patel PH. Gharekhan, A. (2014). Correlation study of soil parameters of Kutch district agriculture land. 2014;4(5).
56. Verma VK, Setia RK. Sharma PK. Distribution of micronutrient cation in different physiographic units of semi-arid regions of Punjab. *Agropedology.*2008;18:58-65.
57. Opeyemi AO, Adewunmi BI, Oluwaseyi AI. Physical and chemical properties of soils in Gambari forest reserve near Ibadan, South Western Nigeria, *Journal of Bioresource Manag.* 2020;7(2):57-67.
58. Rahal NS. (2015). Characterization of spatial variability of some physiochemical soil properties of Mesopotamian plain soils. *European Journal of Agriculture and Forestry Research.* 2015;3(3)1-16.
59. Smitha, P. G., Byrappa, K., & Souza, L. D. Coefficient of correlation for soil physico-chemical parameters. *Environmental Sciences an Indian Journal (ESAIJ).*2008;3(1):45-48.
60. Cerri, D. G. P., & Magalhaes, P. S. G. Correlation of physical and chemical attributes of soil with sugarcane yield. *Pesq. agropec. bras., Brasilia.* 2012;47(4):613-620.
61. Leena HU, Premasudha BG, Panneerselvam S. Basavaraja P.K. Pedometric mapping for soil fertility management – A case study. *Journal of the Saudi Society of Agricultural Sciences.* 2021;20:128–135.
62. Bhunia GS, Shit PK, Chattopadhyay R. Assessment of spatial variability of soil properties using geostatistical approach of lateritic soil (West Bengal, India). *Annals of Agrarian Science.*2018;16 (4):436-443Management and Climate Change.
63. Dakagan, JB. (2021). Smallholder farmers’ constraints to maize growth and yield variability in the Northern Guinea Savannah of Nigeria. An unpublished PhD thesis submitted to the Department of Geography, Bayero University Kano in partial fulfillment of the requirements for Doctorate Degree in Natural Resource management.
64. Prochnow L, Resende A, Junior A, FranciscoE, Casarin V, Pavinato P. Phosphorus placement for annual crops in the tropics. *Better Crops.*2018;102:21-24.
65. John K, Bouslihim Y, Isong IA, Hssaini L, Razouk R, Kebonye, N M, Agyeman VP, Zadorova T. Mapping soil nutrients via different covariates combinations: theory and an example from Morocco. *Ecological Processes.*2022;11:23.