

Inheritance Studies in Segregating Population of Bread Wheat (*Triticum aestivum* L.)

ABSTRACT

The experimental material of present study comprised of 127 treatments and 4 check varieties in augmented design conducted during *rabi* season (2022) in research field of Genetics and Plant Breeding, Lovely Professional University, Phagwara, India. Observations were recorded for days to 50% heading, days to maturity, plant height, number of productive tillers per plant, ear length, number of spikelets per ear, ear weight, number of grains per ear, test weight, biological yield per plant, harvest index, chlorophyll content and grain yield per plant. Analysis of variance disclosed that treatments and check varieties are highly significant for all the characters. Phenotypic coefficient of variation noted higher magnitude than genotypic coefficient of variation for all the traits. Heritability combined with genetic advance as percent of mean is noted high for grain yield per plant, biological yield per plant, number of productive tillers per plant, ear weight, harvest index, test weight, ear length, number of spikelets per ear, number of grains per ear and plant height. The correlation coefficient assessed positive and highly significant for biological yield per plant, number of productive tillers per plant, harvest index, ear weight, plant height, test weight and ear length. Grain yield per plant recorded positive significant association with biological yield per plant (0.7816), number of productive tillers per plant (0.7051), harvest index (0.527), ear weight (0.4076), plant height (0.3632), test weight (0.3222), and ear length (0.2439), whereas negatively significantly associated with days to 50% heading (-0.4019) and days to maturity (-0.4019). The findings from path analysis unveiled that the maximum direct effect was noted for biological yield per plant, harvest index, number of spikelets per ear, number of productive tillers per plant, ear weight, days to 50% heading, test weight and days to maturity. Out of thirteen traits, eight traits exhibited direct positive effect on grain yield such as biological yield per plant (0.8282), harvest index (0.6061), number of spikelets per ear (0.107), number of productive tillers per plant (0.0191), ear weight (0.0138), days to 50% heading (0.011), test weight (0.0088), and days to maturity (0.0001).

Keywords: PCV, GCV, Correlation, Association, Heritability, Path analysis

1. INTRODUCTION

As the world's number one cereal, wheat (*Triticum aestivum* L., $2n=6x=42$) is a self-pollinated, hexaploid species, belonging to the Poaceae family, is known as the "King of Cereals" because of its large acreage under cultivation, abundant annual output, and commanding position in the global market for food grains. It possesses a genome AABBDD. Originating from South West Asia (Turkey), wheat is one of the most widely grown crops. This is particular cereal thrives in cool climatic conditions and plays a significant role in ensuring nutritional and food security in India. The FAO estimates global wheat output at 775.4 mt for 2021-22, with India's share at 103.9 mt [1-2]. Countries including China, India, United States of America, Russia, France, Australia, Canada, Turkey, Pakistan, Argentina, United States, Italy and Iran are important producers of wheat. UP (Uttar Pradesh), Punjab, MP (Madhya Pradesh), Haryana, Rajasthan, Bihar, Gujarat, Maharashtra, West Bengal, and Uttarakhand are the Indian regions with the highest wheat production [3].

Knowledge of genetic characteristics such as correlation, genetic advance, and heritability is required to find traits that contribute to yield in order to enhance yield [4]. In the plant improvement initiative, estimations of heritability are being used as criteria for selection. It

has become standard practice in attempting to predict the extent to which a trait is inherited from parent to offspring [5]. Breeding programs rely heavily on correlation and path analysis. Correlation is used to determine the relationship between two or more traits. Path analysis study splits the correlation into direct and indirect effects among yield and yield contributing traits [6]. Selection is more likely to occur in populations with both high heritability and high genetic advance Johnson *et al.* [7]. The main objectives of this investigation are as follows:

1. To isolate superior segregants for grain yield and other traits.
2. To assess the genetic variability for yield and its related traits in segregating population of Bread Wheat.
3. To study nature and magnitude of association among yield traits through correlation and path analysis.

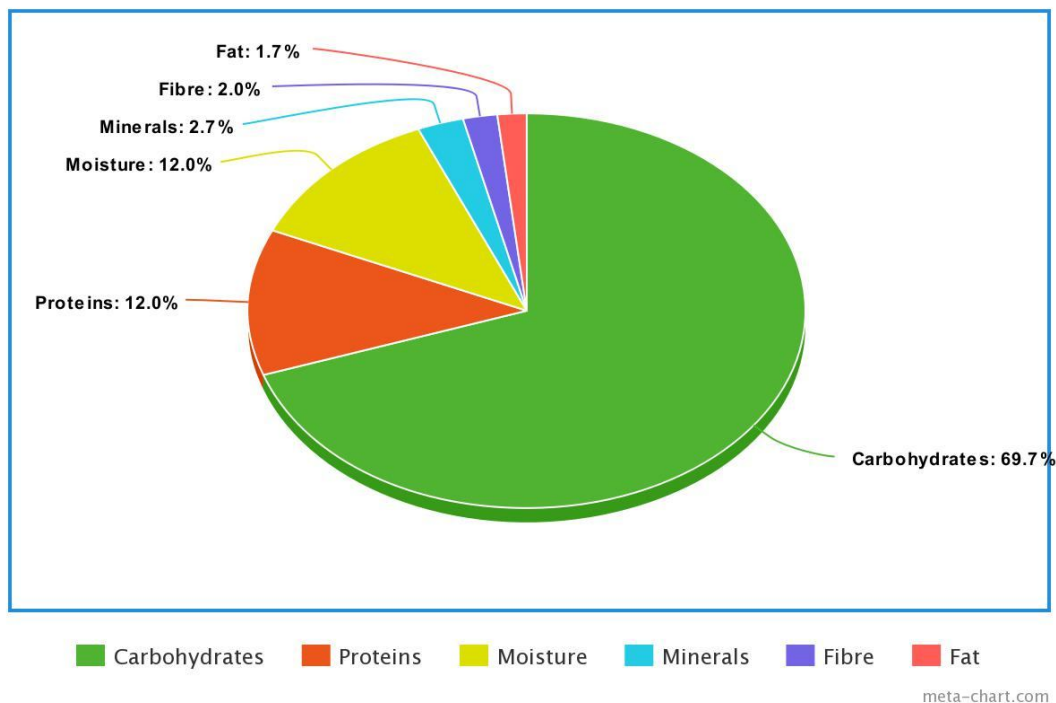


Figure 1: Nutritional values of wheat grain.

2. MATERIALS AND METHOD

The research was conducted during the *Rabi* season 2022 at the Research field of Genetics and Plant Breeding, Lovely Professional University, Phagwara, Punjab in augmented design. Sowing was done on 30th November 2022 with a spacing of 22.5 cm. **The crossing was done in 2017 by our institution.** Five observations are taken among 127 genotypes and 4 check varieties and selection is carried out on the basis **of thirteen phenotypic** traits such as days to 50% heading, days to maturity, plant height, number of productive tillers per plant, ear length, number of spikelets per plant, ear weight, **number of grains per ear**, 1000 grain weight, biological yield per plant, grain yield per plant, harvest index and chlorophyll content.

Chart 1. Name of frequent crosses

S.no	Treatment Name
1	RUJ 4037 x MP-3382
2	DBW-107 x MP-3382
3	HI-1544 x MP-3382

Chart 2. Check Varieties

S.no	Check Name
1	GW-322
2	DDW-47
3	HI-8759
4	MP- 3336

2.1 Statistical analysis

1. Analysis of variance (Panse and Sukhatme, 1952) [8]
2. Heritability and Genetic advance (Hanson et. al., 1956 [9] and Johnson et. al., 1955) [7].
3. Correlation coefficient analysis (Miller et. al., 1958) [10]
4. Path coefficient analysis (Dewey and Lu, 1959) [11]

3. RESULTS AND DISCUSSION

Table 1 presents the results of the analysis of variance performed on thirteen traits, aiming to evaluate the significance of differences among the various treatments and checks. The study employed an augmented design, allowing for a comprehensive examination of the treatment's effects. This analysis provides valuable statistical insights into the variations observed among the treatments, aiding in the determination of their significance. It disclosed that treatments and check varieties are highly significant for all the traits such as days to 50% heading, days to maturity, plant height, number of productive tillers per plant, ear length, number of spikelets per ear, ear weight, number of grains per ear, test weight, biological yield per plant, harvest index, chlorophyll content and grain yield per plant. Corresponding observations are noted by [12-14].

Table 2 and Figure 2 revealed that for every trait, PCV was greater than GCV, suggesting that environmental factors in addition to genotype contributed to variation in character expression. These are further stated by [15-17]. The magnitude of PCV and GCV are (0-10%) low, (10-20%) moderate, and (above 20%) high. The high PCV and GCV for Grain yield per plant followed by biological yield per plant, number of productive tillers per plant, ear weight and harvest index. Comparable results were documented by Reena *et al.* [18].

Table 1: Analysis of variance for various yield-contributing traits in wheat

S. No.	Source	Df	DTH	DM	PH	NPTP	EL	NSE	EW	NGE	TW	BYP	HI	CC	GYP
1	Treatment (ignoring Blocks)	130	26.16**	26.16**	116.5**	1.82**	1.85**	3.49**	0.39**	30.59**	41.7**	29.19**	103.02**	11.32**	5.98**
2	Treatment: Check	3	118.94**	118.94**	70.42**	0.6**	2.92**	5.82**	0.57**	70.37**	40**	25.06**	390.58**	0.79**	10.93**
3	Treatment: Test vs. Check	1	607.55**	607.55**	269.2**	36.08**	2.13**	48.71**	0.33**	309.41**	9.47**	2.81**	3031.72**	4.1**	89.74**
4	Treatment: Test Block (eliminating Treatments)	126	19.34**	19.34**	116.39**	1.58**	1.82**	3.08**	0.38**	27.43**	42**	29.5**	72.93**	11.62**	5.2**
5	Residuals	5	3.1 ^{ns}	3.1 ^{ns}	17.17 ^{ns}	0.01 ^{ns}	0.0028 ^{ns}	0.02 ^{ns}	0.0023 ^{ns}	0.2 ^{ns}	0.1 ^{ns}	0.07 ^{ns}	2.59 ^{ns}	3.94 ^{ns}	0.08 ^{ns}
6	CV	15	6.28	6.28	17.17	0.01	0.0028	0.02	0.0023	0.2	0.1	0.07	2.59	6.07	0.08
7			2.86	2.11	4.8	1.99	0.55	0.91	2.02	0.96	0.84	1.54	4.78	7.95	5.19

DTH- Days to 50% heading, **DM-** Days to maturity, **PH-** Plant height, **NPTP-** Number of productive tillers per plant, **EL-** Ear length, **NSE-** Number of spikelets per ear, **EW-** Ear weight, **NGE-** Number of grains per ear, **TW-** Test weight, **BYP-** Biological yield per plant, **HI-** Harvest index, **CC-** Chlorophyll content, **GYP-** Grain yield per plant.

*, ** significant at 5% and 1% level of significance

Table 2: Genetic variability parameters among thirteen characters

Traits	Mean	Range		GCV	PCV	hBS	GA	GAM
		Min	Max					
DTF	86.94	81.75	102.5	4.16	5.06	67.54	6.13	7.05
DM	117.94	112.75	133.5	3.06	3.73	67.54	6.13	5.2
PH	85.72	48.5	112.99	11.62	12.59	85.25	18.97	22.13
NPTP	4.76	2.62	8.96	26.33	26.4	99.47	2.58	54.18
EL	9.53	5.35	14.07	14.15	14.16	99.85	2.78	29.17
NSE	15.2	10.71	19.96	11.51	11.55	99.37	3.6	23.67
EW	2.36	1.3	4.32	26.18	26.26	99.4	1.27	53.85
NGE	45.42	32.14	59.81	11.49	11.53	99.28	10.73	23.62
TW	37.66	20	56	17.19	17.21	99.76	13.34	35.41
BYP	16.78	8.5	34.25	32.33	32.37	99.77	11.18	66.62
HI	35.3	11.29	57.74	23.76	24.19	96.45	16.99	48.13
CI	30.91	22.44	38.61	7.63	11.03	47.79	3.36	10.88
GYP	5.88	2.17	12.84	38.45	38.76	98.37	4.63	78.67

Figure 2. GCV and PCV for 13 traits in F₅ generation in Wheat

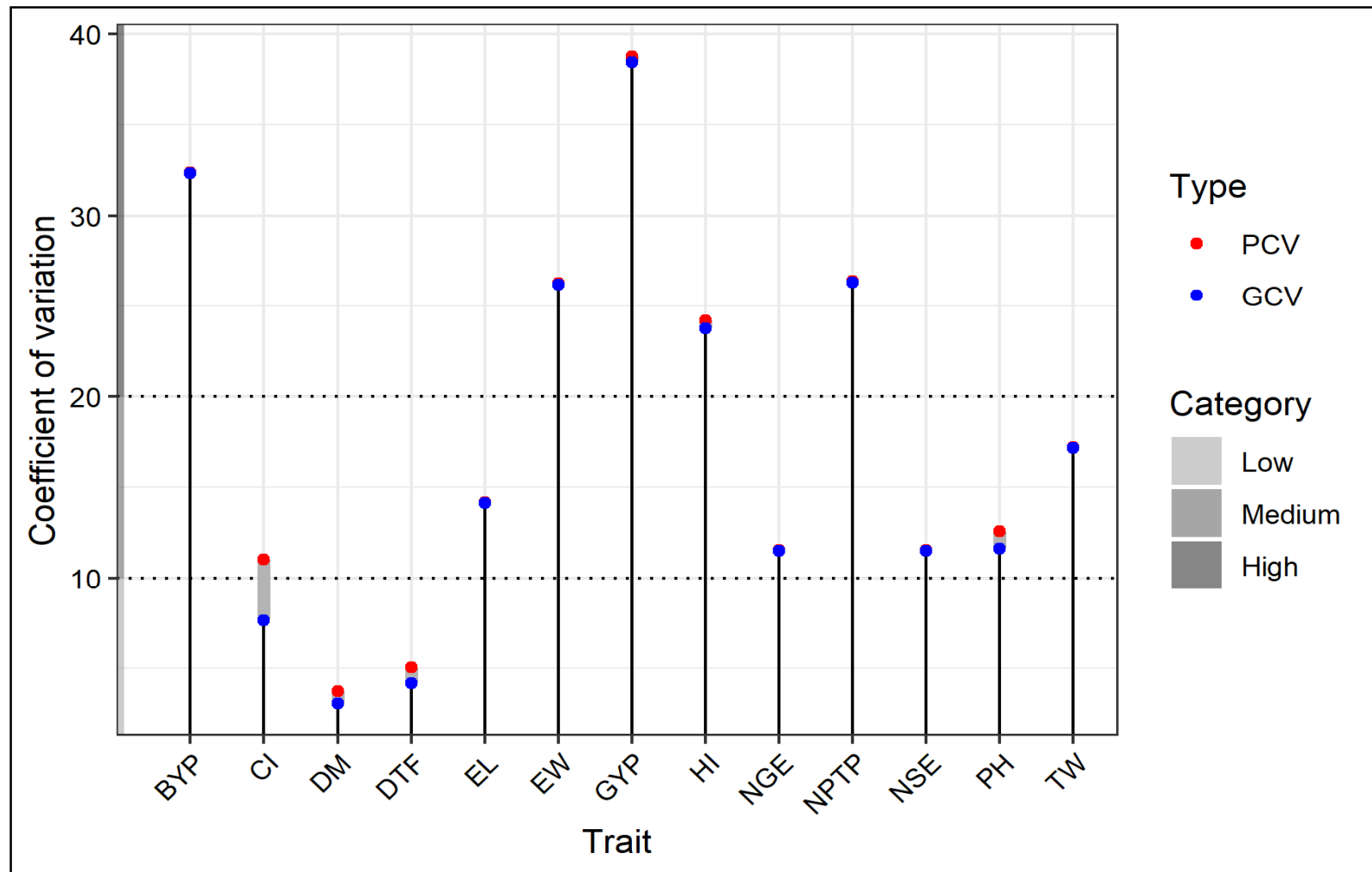
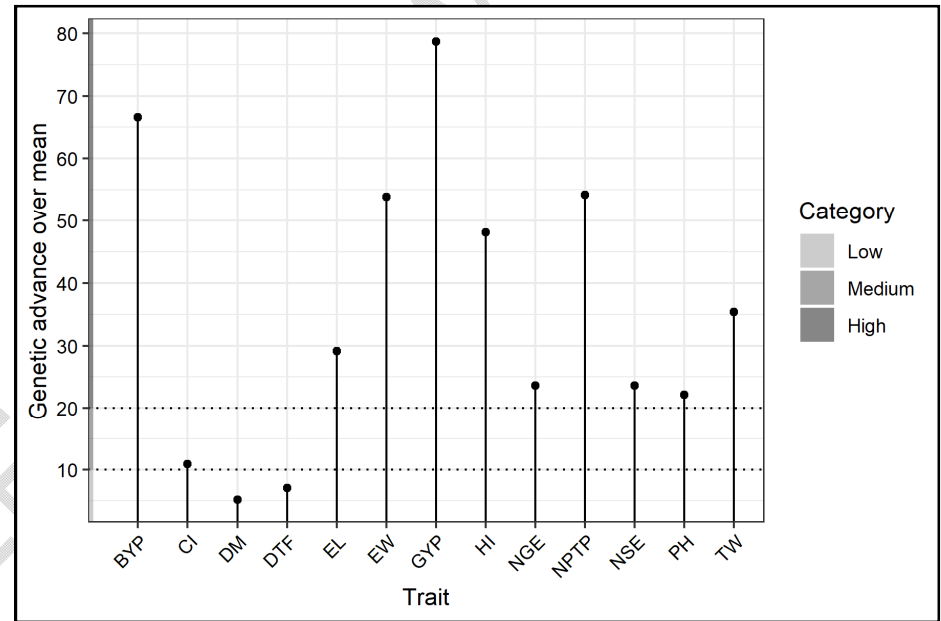
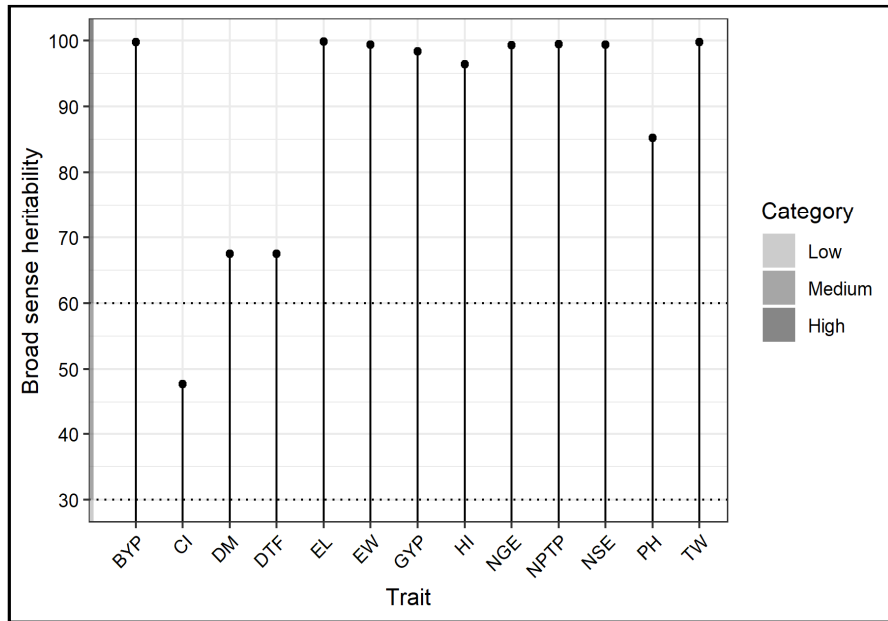


Figure 3. Broad sense heritability and genetic advance over mean for 13 traits in F₅ generation in Wheat



Moderate PCV and GCV were recorded for test weight followed by ear length, plant height, number of spikelets per ear, number of grains per ear and chlorophyll content reported moderate PCV and low GCV. Equivalent results were registered by [16 and 19]. Low PCV and GCV are observed for days to flowering and days to maturity. Corresponding observations are noted by [20-21].

3.1 Heritability

Selection strategies and trait stability are heavily influenced by heritability. Table 2 and Figure 3 displays broad sense heritability estimates for yield and associated characteristics. [4] categorized heritability as low (less than 40%), moderate (40-60%), and high (greater than 60%). All the traits obtained the highest heritability except chlorophyll content such as Ear length (99.85), biological yield per plant (99.77), test weight(99.76), number of productive tillers per plant (99.47), ear weight (99.4), number of spikelets per ear (99.37), number of grains per ear (99.28), grain yield per plant (98.37), harvest index (96.45), plant height (85.25), days to 50% heading (67.54), and days to maturity (67.54). Moderate heritability was noted for chlorophyll content (47.79). These findings are consistent with those reported by [22-23] for Days to 50% heading, [17 and 24] for days to maturity, [24-26] for plant height, [24 and 27] for number of productive tillers per plant, [22,25] for number of spikelets per ear, [17-18] for ear weight [28] for number of grains per ear, [21,23 and 28] for test weight, [18, 27 and 28] for biological yield per plant, [22,28] for harvest index, [24,27] for chlorophyll index, [18,26,28].

3.2 Genetic advance

Genetic advance as percent of mean in Table 2 and Figure 3 is categorized as low (less than 10%), moderate (10-20%), and high (greater than 20%). The present study revealed high genetic advance as percent of mean for grain yield per plant (78.67), biological yield per plant (66.62), number of productive tillers per plant (66.62), ear weight (53.85), harvest index (48.13), test weight (35.41), ear length (29.17), number of spikelets per ear (23.67), number of grains per ear (23.62), and plant height (22.13). Moderated genetic advance as percent of mean noted for chlorophyll content (10.88) and remaining traits such as days to 50% heading (7.05) and days to maturity (5.2) registered low genetic advance as percent of mean. Equivalent results were registered by [2,16] for Days to 50% heading and days to maturity, [16,19] for plant height, [29-30] for number of productive tillers per plant, number of spikelets per ear, ear weight and number of grains per ear, test weight and biological yield per plant, harvest index, Chlorophyll index and grain yield per plant [16-28].

3.3 Correlation coefficient

Correlation research showed that there is an association between yield and the variables that contribute to yield. Estimating genotypic correlation is important for determining the characteristic's true connection [31]. When two desired traits are positively correlated, the plant breeder can focus on improving both traits at once, however negative association will prevent the characters from expressing themselves similarly [16].

Table 3 reveals the association between thirteen yield and yield-attributing traits. Grain yield per plant recorded positive significant association with biological yield per plant (0.7816), number of productive tillers per plant (0.7051), harvest index (0.527), ear weight (0.4076), plant height (0.3632), test weight (0.3222), and ear length (0.2439), whereas negatively significantly associated with days to 50% heading (-0.4019) and days to maturity (-0.4019). Biological yield per plant is significantly positively correlated with number of

productive tillers per plant (0.6854), ear weight (0.3859), plant height (0.2895), ear length (0.2633), number of grains per ear (0.2563), number of spikelets per ear (0.2437), and negatively correlated with days to 50% heading (-0.2633) and days to maturity (-0.2633). Test weight showed positive significant association with plant height (0.3579), harvest index (0.2528), ear weight (0.2341), and negative significant association with days to 50% heading (-0.4106), days to maturity (-0.4106), number of grains per ear (-0.2363), and number of spikelets per ear (-0.229). A significant positive genotypic correlation of harvest index was found for characters namely plant height (0.2268), number of productive tillers per plant (0.2103) and negative genotypic correlation for days to 50% heading (-0.3150), days to maturity (-0.3150) and number of spikelets per ear (-0.2449). Number of grains per ear shows positive association with number of spikelets per ear (0.9945), ear length (0.4349) and ear weight (0.2234), on other hand ear weight is positively associated with number of spikelets per ear (0.2229). Number of spikelets per ear and ear length are significantly positively associated with ear length (0.4099) and plant height (0.3933) respectively whereas plant height is negatively correlated with days to 50% heading (-0.3058) and days to maturity (-0.3058). Days to 50% heading is positive significant association with days to maturity (1.000). Comparable results were documented by [32-33] for days to 50% heading, days to maturity, plant height, number of productive tillers per plant, ear length, ear weight, number of grains per ear, harvest index, chlorophyll index, test weight and biological yield per plant [30-35].

3.4 Path analysis

Path analysis method indicates whether the link between the independent character and the dependent one, in this example, grain yield is the result of direct effect or the result of an indirect effect via another character. The direct effect of the independent variable demonstrates a genuine correlation between the two variables. The practice of selection can be employed to enhance the dependent variable in relation to a given character Sharma et al., 2018.

Table 4 disclosed that, out of thirteen traits, eight traits exhibited direct positive effect on grain yield such as biological yield per plant (0.8282), harvest index (0.6061), number of spikelets per ear (0.107), number of productive tillers per plant (0.0191), ear weight (0.0138), days to 50% heading (0.011), test weight (0.0088), and days to maturity (0.0001). Four traits exhibited direct negative effect on grain yield such as number of grains per ear (-0.0996), ear length (-0.0387), chlorophyll content (-0.0099), and plant height (-0.0004).

Biological yield per plant showed high positive direct effect and had significant association with grain yield (0.7816), it has a maximum positive indirect effect via number of productive tillers per plant (0.5676), ear weight (0.3196), plant height (0.2397) and number of grains per ear (0.2123). Direct effect of harvest index on grain yield was positive, and its indirect positive contribution via test weight (0.1532), plant height (0.1375), and number of productive tillers per plant (0.1375).

Ear length and number of grains per ear showed negative direct effect on grain yield although the magnitudes are very small. Chlorophyll content noted direct negative effect and negative indirect contribution via days to maturity (-0.0018), days to 50% heading (-0.0018), ear length (-0.0003), and plant height (-0.0002), meanwhile indirect positive contribution via test weight (0.0006), biological yield per plant (0.0005), ear weight (0.0005), harvest index (0.0003), number of spikelets per ear (0.0003) and number of grains per ear (0.0001).

Table 3: Understanding the Correlation patterns among yield and yield attributing traits.

	DTF	DM	PH	NPTP	EL	NSE	EW	NGE	HI	CI	TW	BYP	GYP
DTF	1	1.000**	-0.3058**	-0.2042	-0.17	0.1207	-0.1757	0.1181	-0.3150**	0.1864	-0.4106**	-0.2633**	-0.4019**
DM		1	-0.3058**	-0.2042	-0.17	0.1207	-0.1757	0.1181	-0.3150**	0.1864	-0.4106**	-0.2633**	-0.4019**
PH			1	0.0982	0.3933**	-0.004	0.1744	0.0177	0.2268*	0.0189	0.3579**	0.2895**	0.3632**
NPTP				1	0.146	0.0777	0.1401	0.1053	0.2103*	-0.0262	-0.126	0.6854**	0.7051**
EL					1	0.4099**	0.176	0.4349**	0.1011	0.0315	-0.0174	0.2633**	0.2439*
NSE						1	0.2229*	0.9945**	-0.2449*	-0.0273	-0.229*	0.2437*	0.0496
EW							1	0.2234*	0.1258	-0.0512	0.2341*	0.3859**	0.4076**
NGE								1	-0.2095	-0.0125	-0.2363*	0.2563**	0.0797
HI									1	-0.026	0.2528**	-0.09	0.527**
CI										1	-0.0634	-0.0524	-0.0717
TW											1	0.1977	0.3222**
BYP												1	0.7816**

*, ** significant at 5% and 1% level of significance

Table 4: Direct and Indirect effects of different characters on Grain yield

	DTF	DM	PH	NPTP	EL	NSE	EW	NGE	HI	CI	TW	BYP	GYP
DTF	0.011	0.011	-0.0034	-0.0022	-0.0019	0.0013	-0.0019	0.0013	-0.0035	0.002	-0.0045	-0.0029	-0.4019
DM	0.0000	0.0001	0.0000	0.0000	0.0000	0.0000	0.0000	0.0000	0.0000	0.0000	0.0000	0.0000	-0.4019
PH	0.0001	0.0001	-0.0004	0.0000	-0.0002	0.0000	-0.0001	0.0000	-0.0001	0.0000	-0.0002	-0.0001	0.3632
NPTP	-0.0039	-0.0039	0.0019	0.0191	0.0028	0.0015	0.0027	0.002	0.004	-0.0005	-0.0024	0.0131	0.7051
EL	0.0066	0.0066	-0.0152	-0.0056	-0.0387	-0.0158	-0.0068	-0.0168	-0.0039	-0.0012	0.0007	-0.0102	0.2439
NSE	0.0129	0.0129	-0.0004	0.0083	0.0439	0.107	0.0239	0.1064	-0.0262	-0.0029	-0.0245	0.0261	0.0496
EW	-0.0024	-0.0024	0.0024	0.0019	0.0024	0.0031	0.0138	0.0031	0.0017	-0.0007	0.0032	0.0053	0.4076
NGE	-0.0118	-0.0118	-0.0018	-0.0105	-0.0433	-0.0991	-0.0223	-0.0996	0.0209	0.0012	0.0235	-0.0255	0.0797
HI	-0.191	-0.191	0.1375	0.1274	0.0613	-0.1484	0.0762	-0.127	0.6061	-0.0158	0.1532	-0.0545	0.527
CI	-0.0018	-0.0018	-0.0002	0.0003	-0.0003	0.0003	0.0005	0.0001	0.0003	-0.0099	0.0006	0.0005	-0.0717
TW	-0.0036	-0.0036	0.0032	-0.0011	-0.0002	-0.002	0.0021	-0.0021	0.0022	-0.0006	0.0088	0.0017	0.3222
BYP	-0.218	-0.218	0.2397	0.5676	0.218	0.2018	0.3196	0.2123	-0.0745	-0.0434	0.1637	0.8282	0.7816

Direct effect of number of spikelets per ear on grain yield is positive and have less magnitude of association with grain yield (0.0496) and however its positive indirect effect via number of grains per ear (0.1064), ear length (0.0439), biological yield per plant (0.0261), ear weight (0.0239), days to 50% heading (0.0129), days to maturity (0.0129) and number of productive tillers per plant (0.0083). Number of productive tillers per plant noted positive direct effect on grain yield and had a significant association with grain yield (0.7051), however, it has maximum positive indirect effect via biological yield per plant (0.0131), ear length (0.0028), ear weight (0.0027), plant height (0.0019), number of spikelets per ear (0.0015), harvest index (0.004) and number of grains per ear (0.004). Similar findings were documented by [29-36].

4. CONCLUSION

The High heritability in combination with high genetic advance is noted for characters such as grain yield per plant, biological yield per plant, number of productive tillers per plant, ear weight, harvest index, test weight, ear length, number of spikelets per ear, number of grains per ear and plant height, it would be more efficacious for the desired genetic enhancement to specify that these characters are subjected to additive gene effects and direct selection for said traits. Grain yield per plant recorded positive significant association with biological yield per plant, number of productive tillers per plant, harvest index, ear weight, plant height, test weight, and ear length, hence, the selection process for these traits can be directly correlated with enhancement of grain yield in wheat. Path analysis disclosed that, eight traits exhibited direct positive effect on grain yield such as biological yield per plant, harvest index, number of spikelets per ear, number of productive tillers per plant, ear weight, days to 50% heading, test weight, and days to maturity whereas four traits exhibited direct negative effect on grain yield such as number of grains per ear, ear length, chlorophyll content, and plant height. It is imperative to prioritise each character when selecting superior types.

REFERENCES

1. Khan GH, Shikari AB, Wani SH, Vaishnavi R. Variability parameters in wheat—a review. *International Journal of Pure & Applied Bioscience*. 2017;5(4):651-62.
2. Prabha AA, Avinash H, Dubey N, Reddy JP, Reddy BT. Genetic studies on F3 population of bread wheat [*Triticum aestivum* L.] for yield and its components traits. *Electronic Journal of Plant Breeding*. 2022 Jun 30;13(2):369-76.
3. Jaiswal R, Gaur SC, Jaiswal SK, Kumar A. An estimate of variability, heritability and genetic advance for grain yield and yield components in bread wheat (*Triticum aestivum* L.). *Curr J of Appl Sci and Tech*. 2020;39(12):1-6.
4. Thonta R, Pandey MK, Kumar R, Santhoshini. Analysis of genetic variability, heritability and genetic advance for growth and yield attributes in green gram (*Vigna radiata* L. Wilczek). *International Journal of Statistics and Applied Mathematics*. 2023;8(3S):43-47.
5. Jaiswal A, Singh L, Singh M, Singh SV, Kumar S, Jatav AL, Singh RK. Analysis of correlation and path coefficient for yield and yield related traits in wheat genotypes. *The Pharma Innov J*. 2022;1:294-298.
6. Dubey N, Avinash HA, Jaiwar S, Chichkhede L, Mehta AK. Character association and path analysis study in fodder oat (*Avena sativa* L.). *Environment & Ecology*. 2015 Apr;33(2A):844-8.
7. Johnson HW, Robinson HF, Comstock RE. Estimates of genetic and environmental variability in soybeans. *Agronomy journal*. 1955;47(7):314-8.

8. Panse VG, Sukhatme PV. 1954. Statistical methods for agricultural workers. Statistical methods for agricultural workers.
9. Hanson CH, Robinson HF, Comstock RE. Biometrical studies of yield in segregating populations of Korean lespedeza 1. Agronomy journal. 1956 Jun;48(6):268-72.
10. Miller PA, Williams Jr JC, Robinson HF, Comstock RE. Estimates of genotypic and environmental variances and covariances in upland cotton and their implications in selection 1. Agronomy journal. 1958 Mar;50(3):126-31.
11. Dewey DR, Lu K. A correlation and path-coefficient analysis of components of crested wheatgrass seed production 1. Agronomy journal. 1959 Sep;51(9):515-8.
12. Pooja C, Singh V, Yadav S. Path coefficient and correlation studies of yield and yield associated traits in diverse genotypes of bread wheat (*Triticum aestivum* L.). Int. J. Chem. Stud. 2018;6:73-6.
13. Reddy JP, Kumar M, Kalubarme S, Avinash H, Dubey N. studies on choice of traits for seed yield improvement through breeding in bread wheat (*Triticum aestivum* L.) Genotypes. Plant Archives. 2020;20(2):7813-9.
14. Kaur S, Avinash HA, Dubey N, Kalubarme S, Kumar M. Assessment of genetic variability and association analysis for yield and yield attributing traits in bread wheat (*Triticum aestivum* L.). Plant Archives. 2019;19(1):1261-7.
15. Avinash HA, Dubey N, Shukla RS. Genetic analysis for economic traits in wheat under timely and very late sown conditions. International journal pure and applied bioscience. 2017;5(5):157-62.
16. Jaha SK, Dubey N, Avinash HA. Genetic divergence and character association studies in bread wheat (*Triticum aestivum* L.) genotypes.
17. Rajput RS. Correlation, path analysis, heritability and genetic advance for morpho-physiological character on bread wheat (*Triticum aestivum* L.). Journal of Pharmacognosy and phytochemistry. 2018;7(2):107-12.
18. Reena R, Punia MS, Singh V. Estimation of genetic variability parameters for various quantitative traits and rust resistance in bread wheat (*Triticum aestivum* L.). Int. J. Curr. Microbiol. App. Sci (2018). 2018;7(7):1955-66.
19. Kumari G, Shukla RS. Studies on heritability, genetic variability and genetic advance of yield and yield attributing traits in bread wheat (*Triticum aestivum* L.).
20. Kumar M, Avinash H, Dubey N, Kaur S, Kalubarme S, Reddy P, Ozukum W. Heritability and correlation studies of yield and yield related traits in bread wheat (*Triticum aestivum* L.). Journal of Pharmacognosy and Phytochemistry. 2019;8(1S):97-101.
21. Chaudhary H, Jaiswal JP, Kumar A, Joshi S. Determination of genetic variability and diversity in bread wheat for yield and Yield contributing traits. International Journal of Plant & Soil Science. 2022 May 16;34(19):16-23.
22. Bayisa T, Tefera H, Letta T. Genetic variability, heritability and genetic advance among bread wheat genotypes at Southeastern Ethiopia. Agriculture, Forestry and Fisheries. 2020 Aug 19;9(4):128.
23. Mishra U, Sharma AK, Chauhan S. Genetic variability, heritability and genetic advance in bread wheat (*Triticum aestivum* L.). Int. J. Curr. Microbiol. App. Sci. 2019;8(7):2311-5.
24. Thapa RS, Sharma PK, Pratap D, Singh T, Kumar A. Assessment of genetic variability, heritability and genetic advance in wheat (*Triticum aestivum* L.) genotypes under normal and heat stress environment. Indian journal of agricultural research. 2019;53(1):51-6.
25. Devesh P, Moitra PK, Shukla RS, Shukla SS, Pandey S, Arya G. Analysis of variability, heritability and genetic advance of yield, its components and quality traits in wheat. International Journal of Agriculture, Environment and Biotechnology. 2018;17(4):855-9.

26. Shah N, Sharma P, Kumar D. Estimation of variability, heritability and genetic advance of yield contributing traits in bread wheat (*Triticum aestivum* L.). The Pharma Innovation Journal 2023; 12(3): 1404-1407
27. Emmadishetty CS, Gurjar D. Studies of genetic variability, heritability and genetic advance for yield component traits in bread wheat (*Triticum aestivum* L.). Electronic Journal of Plant Breeding. 2022;13(4):1214-9.
28. Roy A, Kumar A, Singh A, Mandi A, Barman M. Analysis of genetic diversity and correlation studies on grain yield and its component characters in bread wheat (*Triticum aestivum* L. em Thell) genotypes. Pharma Innov. J. 2021;10:341-5.
29. Kumar R. Study of genetic variability to emphasize breeding programme for fodder and grain yield in oat genotypes. The Pharma Innovation Journal. 2022;11(5):2505-8.
30. Ozukum W, Avinashe H, Dubey N, Kalubarme S, Kumar M. Correlation and path coefficient analyses in bread wheat (*Triticum aestivum* L.). Plant Arch. 2019;19(2):3033-8.
31. Maurya AK, Yadav RK, Singh AK, Deep A, Yadav V. Studies on correlation and path coefficients analysis in bread wheat (*Triticum aestivum* L.). Journal of Pharmacognosy and Phytochemistry. 2020;9(4):524-7.
32. Baye A, Berihun B, Bantayehu M, Derebe B. Genotypic and phenotypic correlation and path coefficient analysis for yield and yield-related traits in advanced bread wheat (*Triticum aestivum* L.) lines. Cogent Food & Agriculture. 2020 Jan 1;6(1):1752603.
33. Ahmad T, Kumar A, Pandey D, Prasad B. Correlation and path coefficient analysis for yield and its attributing traits in bread wheat (*Triticum aestivum* L. em Thell). Journal of Applied and Natural Science. 2018 Dec 1;10(4):1078-84.
34. Thonta R, Pandey MK, Kumar R, Santhoshini. Studies on correlation and path coefficient for growth and yield attributes in green gram (*Vigna radiata* L. Wilczek). Pharma Innovation 2023;12(6):1910-1915. DOI: 10.22271/tpi.2023.v12.i6v.20691
35. Rajput RS. Path analysis and genetic parameters for grain yield in bread wheat (*Triticum aestivum* L.). Annual Research & Review in Biology. 2019 Mar 28:1-8.
36. Ullah MI, Mahpara S, Bibi R, Shah RU, Ullah R, Abbas S, Ullah MI, Hassan AM, El-Shehawi AM, Brestic M, Zivcak M. Grain yield and correlated traits of bread wheat lines: Implications for yield improvement. Saudi Journal of Biological Sciences. 2021 Oct 1;28(10):5714-9.
37. Sharma P, Kamboj MC, Singh N, Chand M, Yadava RK. Path coefficient and correlation studies of yield and yield associated traits in advanced homozygous lines of bread wheat germplasm. International Journal of Current Microbiology and Applied Sciences. 2018;7(2):51-63.