

Original Research Article

Morphological Characterization and Identification of new traits of Soybean [*Glycine max* (L.) Merrill] Germplasm

Abstract

Distinctness, Uniformity, and Stability (DUS) characterization of ninety recently evolved soybean genotypes including three national checks were carried out at JNKVV, Jabalpur, during *Kharif* 2021. Sixteen DUS traits were evaluated as described by National DUS test guidelines. Observations were made on the leaves, stems, flowers, seeds, and pods of plants at various phases. It was revealed that there was a lot of variation in the soybean genotypes for DUS characters. Frequency distribution of data exhibited that presence of Hypocotyl: anthocyanin pigmentation (65.55 %), Semi-Determinate Growth type (75.55 %), Semi-erect Growth habit (90.0 %), Pointed Ovate Leaf shape (83.33 %), Pod hairiness pubescent (84.44%), Seed size medium (64.44%), Seed coat colour yellow (84.44%), Seed coat Lustre intermediate (77.77%) and Colour of funicle brown (100%) were dominating traits in present set of genotypes. This soybean germplasm has a wide range of features and morphological variation, which may assist a breeder in further improvement of soybean. This will be extremely helpful in identifying, conserving and developing ideal plant type on the basis of distinguishing morphological characters.

Keywords: Characterization, compound leaf, DUS, Frequency

INTRODUCTION

Soybean [*Glycine max* (L.) Merrill] has long been considered the world's most significant seed legume. Because of its high oil and protein content, it is renowned as the "Wonder crop" of the twentieth century. The seed of soybean is a great source of protein (36.1–41.2%), sufficient edible oil (16.8–20.2%), various minerals, nutrients, amino acids, antioxidants and health beneficial compounds for human (Mehra et al., 2020; Amrate et al., 2020; Kumar et al., 2020; Uikay et al. 2022). Nowadays, soybean has become prime agricultural commodity that contributes about 25% global edible oil production as well as two thirds of the world's protein concentrate for animal, poultry and fish feed (Agarwal et al., 2013). In India, soybean is major oilseed crop (10.93 mt production and 10.83 mha area) grown in *Kharif* season and at the world level, country ranks fifth in soybean production after USA (1st), Brazil (2nd), China (3rd) and Argentina (4th) (Anonymous, 2020). In India soybean cultivars and genotypes have narrow genetic bases (Agarwal et al., 2013; Mehra et al., 2020).

Exploring and characterization of soybean genotypes are always beneficial for crop improvement (Banerjee et al. 2022). Germplasm is the foundation of any crop improvement programme and plays a key role in crop growth (Sawarkar et al., 2010). Characterization using different morphological markers is required for genotype identification and intellectual property

protection. In order to create incentives for research and fulfil commitments under Trade Related Intellectual Property Rights, India adopted laws for the Protection of Plant Varieties and Farmer's Right Act in 2001. (TRIPs). The fundamental conditions for granting protection to different varieties/germplasm variations are novelty, distinctiveness, uniformity, and stability (Alpna et al (2015)). When employing DUS descriptors, attributes such as pod intensity of brown colour at maturity, pod pubescence, seed coat colour, seed shape, hilum colour, and seed size were demonstrated to be more effective in efficiently discriminating genotypes. This work may be useful to breeders and researchers in identifying these soybean genotypes and then employing them in breeding programmes to generate improved varieties. With this in mind, the major purpose of this experiment is to designate soybean genotypes based on physical traits. Extra early genotypes are in high demand in Madhya Pradesh's Malwa region to accommodate the next crop. Climate change, like every other crop, has a significant impact on soybean production. When employing DUS descriptors, characteristics such as pod intensity of brown colour at maturity, pod pubescence, seed coat colour, seed shape, hilum colour, and seed size were demonstrated to be more advantageous in easily identifying the genotypes. This work may be useful to breeders and researchers in identifying these soybean genotypes and then employing them in breeding programmes to generate improved varieties.

MATERIALS AND METHODS

Ninety soybean lines, including three controls (JS335, JS20-69 and JS20-98), were received from the All India Coordinated Research Project (AICRP) on Soybean, Department of Plant Breeding and Genetics, JNKVV, Jabalpur, and the Indian Institute of Soybean Research, Indore (M.P.). In a Randomised Complete Block Design (RCBD), each genotype was accommodated in three rows of three metres in length in each replication, with a row to row spacing of 40 cm and a plant-to-plant distance of 7 cm after thinning. Observations were made Hypocotyl Pigmentation, Growth type, Growth habit, Leaf shape, Leaf size, Leaf colour, Flower colour, Flower colour, Pod hairiness, Pod pub colour, Pod intensity of brown colour, Seed size, Seed shape, Seed coat colour, Hilum colour, Seed coat Lustre and Colour of funicle. On five plants from each genotype, observations on seventeen traits were recorded at random.

RESULTS AND DISCUSSION

All the fifty genotypes were classified based on of morphological characteristics described in the DUS guidelines (PPV&FRA, 2018) i.e., Hypocotyl Pigmentation, Growth type, Growth habit, Leaf shape, Leaf size, Leaf colour, Flower colour, Flower colour, Pod hairiness, Pod pub colour, Pod intensity of brown colour, Seed size, Seed shape, Seed coat colour, Hilum colour, Seed coat Lustre and Colour of funicle. From the study of these characters, we can easily identify different genotypes of soybean. Hypocotyl coloration was found in 58 genotypes, but not in the rest of the genotypes. At 50% flowering, a key characteristic, growth habit, was noted. Twenty-two genotypes had a determinate growth habit and the rest 68 had semi-determinate growth habits. Only nine genotypes showed erect growth habits, whereas 81 had semi-erect growth habits. Leaf shape was mostly pointed ovate, 1 triangular and 14 lanceolate. Leaf size was medium in 86

genotypes two each for small and large sized leaf respectively. Normally trifoliolate leaves are seen but the presence of penta, septa and octa foliate leaves were seen in some genotypes but this character is not stable and its expressivity is sometimes high and low, it is highly influenced by environmental condition. Four seededness character is positively correlated with lanceolate leaves, its intensity 15-30% per plant. It is also a tool for increasing yield. Four seededness character increases the intensity of three seeded pod. There is no study found for pod character with biotic and abiotic stress. The flowers of 46 genotypes were white, whereas the flowers of the other genotypes were violet. Insect resistance is influenced by the presence of hair on the pod. Frequency distribution of data exhibited that presence of Hypocotyl: anthocyanin pigmentation (65.55 %), Semi-Determinate Growth type (75.55 %), Semi-erect Growth habit (90.0 %), Pointed Ovate Leaf shape (83.33 %), Pod hairiness pubescent (84.44%), Seed size medium (64.44%), Seed coat colour yellow (84.44%), Seed coat Lustre intermediate (77.77%) and Colour of funicle brown (100%) were dominating traits in present set of genotypes. There is a lot of evidence that thick trichomes prevent herbivorous insect damage to plants (Hare and Elle, 2002). The presence of pod pubescence was found in 76 genotypes, whereas rest were glabrous genotypes. Both of these characteristics enable resistance to a variety of insects. At maturity, the maximum 52 genotypes had medium pod intensity of brown colour. In 14 genotypes, large seed was found; Seed shape has a lot of variation. Twenty genotypes had spherical seed shapes, 70 had spherical flattened seed shapes. The seed coat lustre was shiny in 13 genotypes, dull in 7 genotypes, and intermediate in 70 genotypes. Hilum colour was found to be grey in 31 genotypes, imperfect black in 57 genotypes, and black in two genotypes. Seed coat colour was seen Yellow in 76 four genotypes, with the remaining 14 genotypes being yellow green and no genotype was found to be black. So, we can use these characters as an identification key. Similar, characterization pattern was adopted by, Ramteke et al. (2012); Malek et al. (2014); Ramteke et al. (2015); Dubey (2015); Talla et al. (2016); Bellaloui et al. (2017); Uikay et al. (2022) Vandana et al. (2017); Bhakuni et al. (2017); Pawale et al. (2019); Mehra et al., (2020); Amrate et al., (2020); Dhaliwal et al. (2020); Singh et al. (2021); Banerjee et al. (2022); Thakur et al. (2022) taking distinguished morphological traits. Based on cluster analysis of 16 morphological traits all 90 soybean genotypes structured into one group. Major group consisted 90 genotypes. The major group was further divided into two sub groups with 58 and 32 genotypes respectively. First sub group was divided into two parts. Major part contained 44 soybean genotypes and minor part had 14 genotypes, namely: DCB-137, JS24 36, SL 744, JSM-232, NRC-128, JS21-05, JS22-48, JS22-13, JS22-11, JS22-15, EC-481571, JS22-28, SL-96 and AUKS-199. Similarly, second sub group was further divided into two parts and major part consisted 30 genotypes, i.e., Cat-87, Cat-783, PS-1614, SL-710, JS22-20, JS20-105, JS24-37, JS23-08, RVS2012-19, PS-1569, JS22-36, JS22-16, JS22-55, JS22-27, NRC-137, PS-1225, JS24-35, JS21-72, JS22-54, JS22-17, JS22-53, JS23-05, PS 16-13, JS22-31, JS22-10, JS22-38, JS22-33, JS22-35, JS20-116 and JS22-26 while minor part had only two genotypes JS22-34 and JS22-47 (Fig 4).

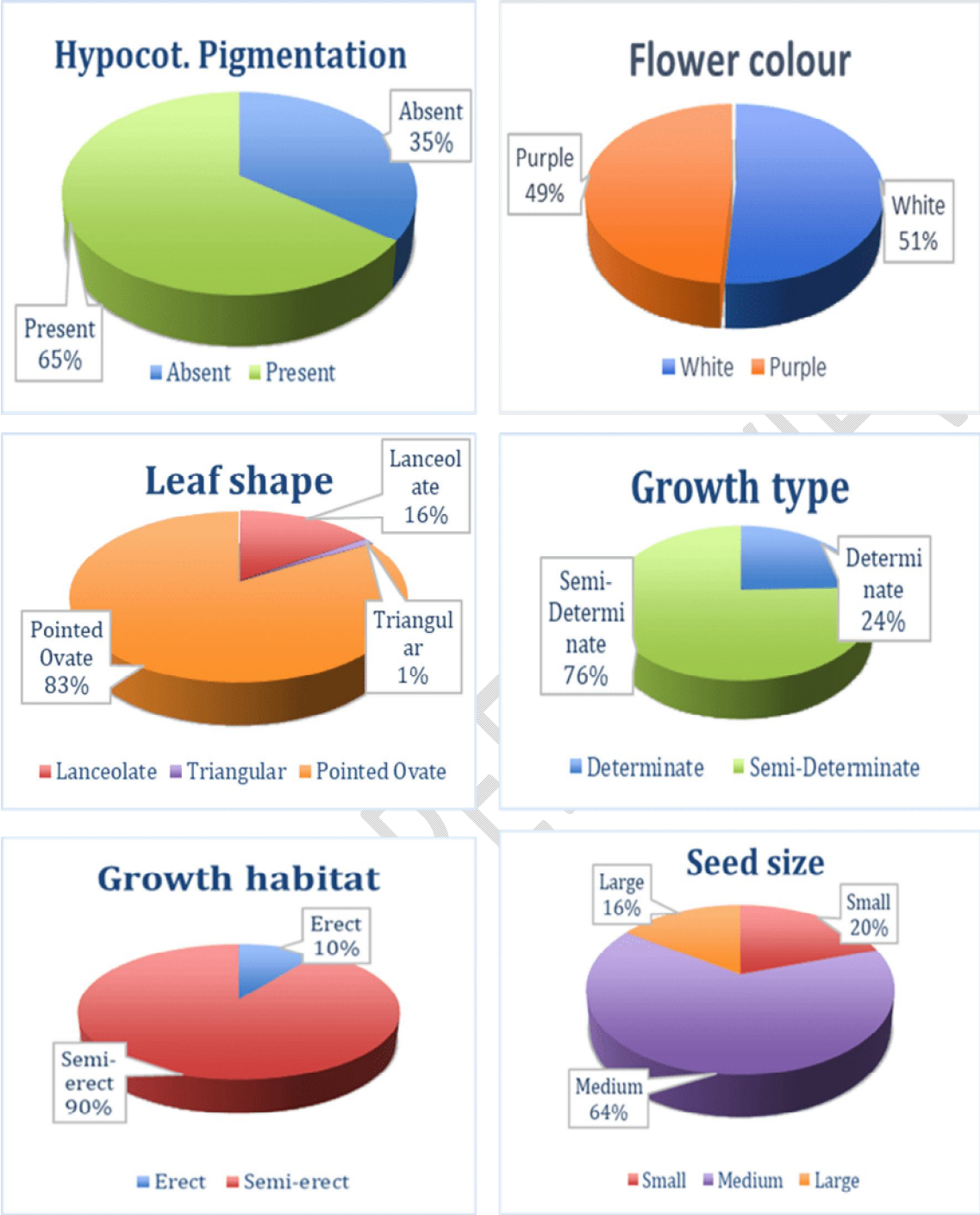


Figure 1. Frequency distribution pie chart for different morphological traits

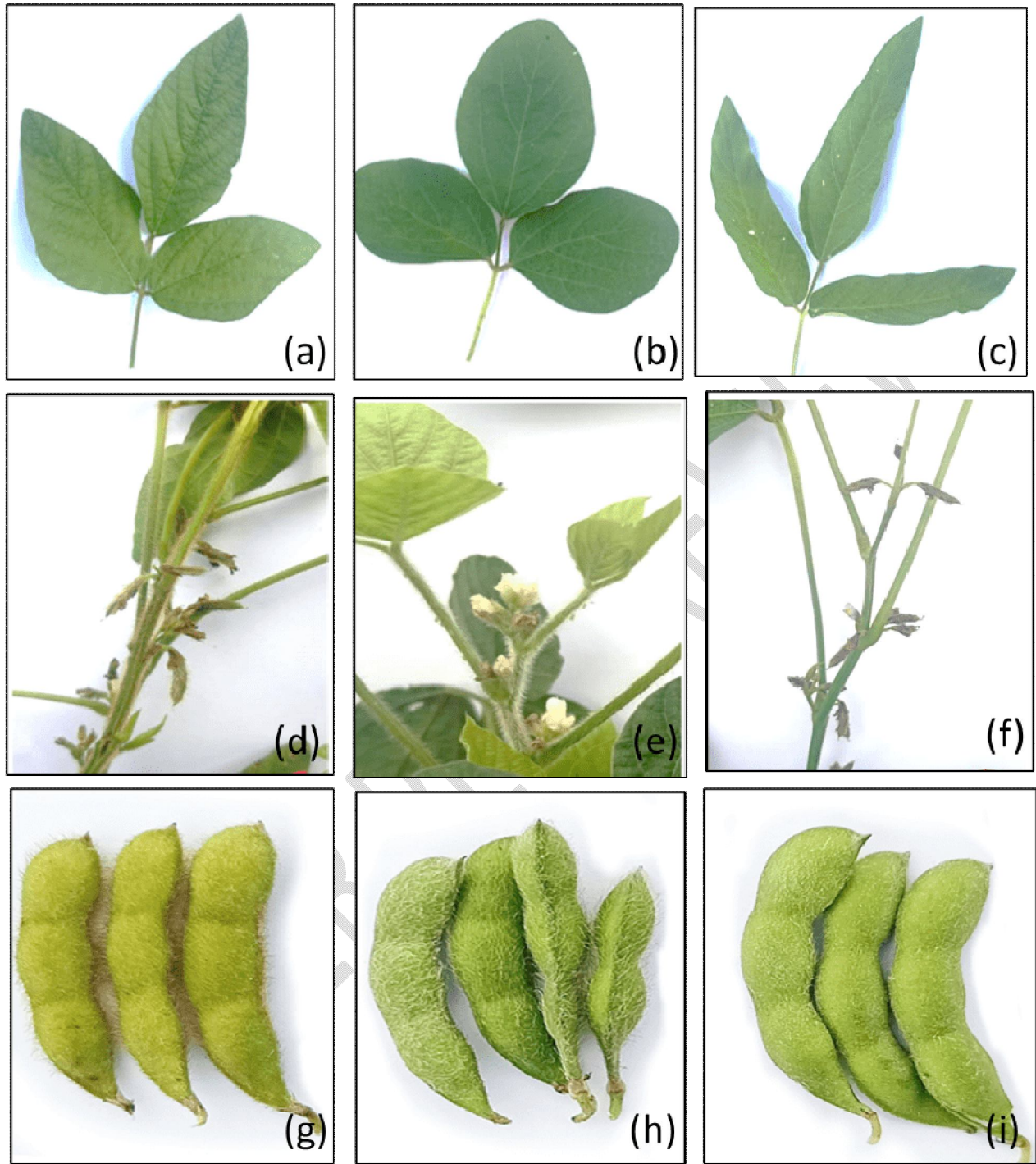


Figure 2. Showing variation in leaf shape (a-Pointed ovate b-Ovate c-Lanceolate), Pubescence (d-Stem Pubescence e-Stem Grey f- Stem Glabrous), Pod pubescence (g-Pod Tawny Pubescence h- Grey Pubescence-Glabrous), Flower colour (j- White Flower k-Violet Flower), Foliage (l- Penta folate Leaf)

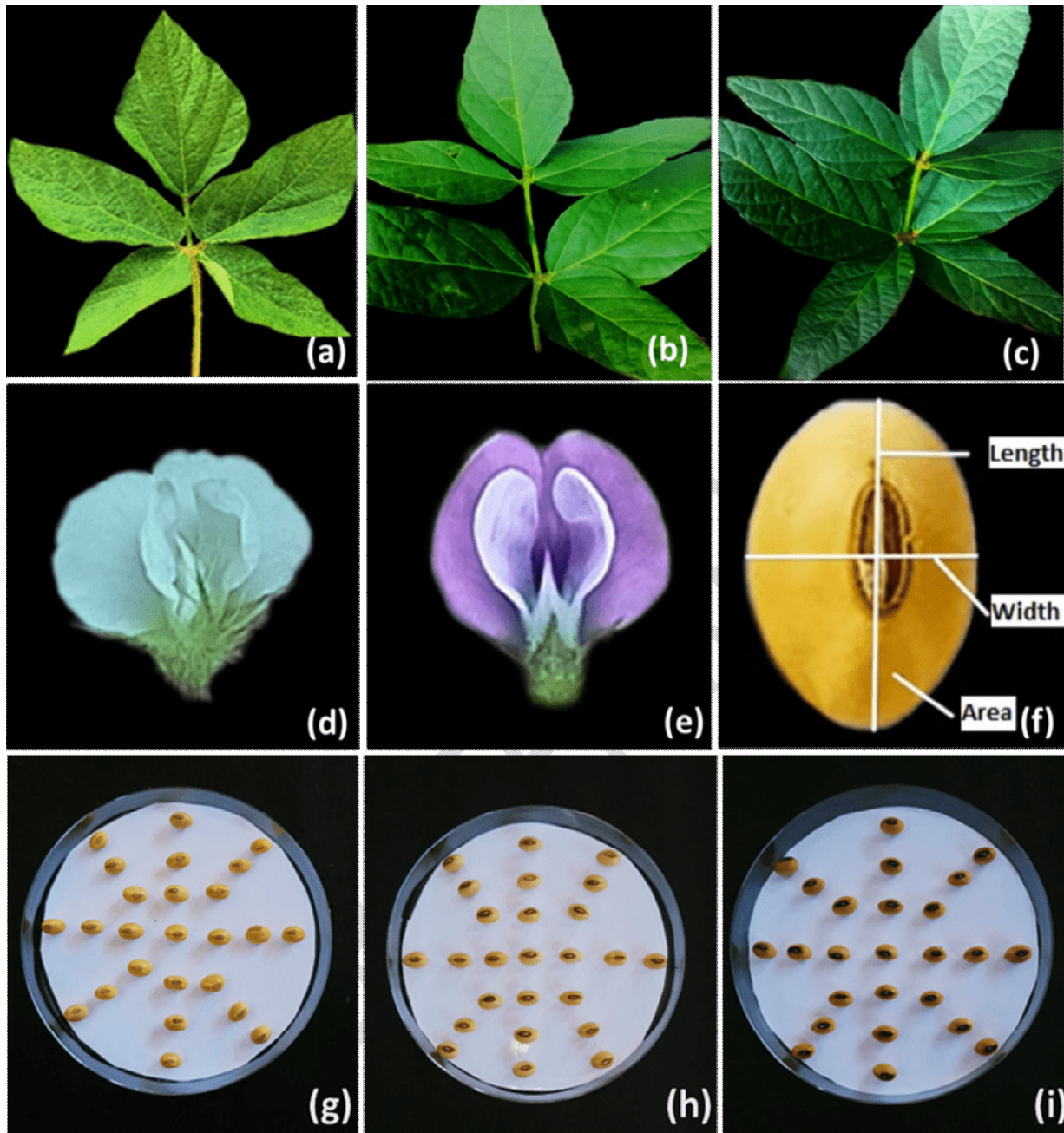


Figure 3. Showing New trait variation in foliage (a-Penta foliate Leaf, b-Hexa foliate leaf and c-Hepta foliate leaf), Flower colour (d-White Flower e-Violet Flower) and hilum colouration (g-Brown hilum, h-Imperfect black and i-black hilum)

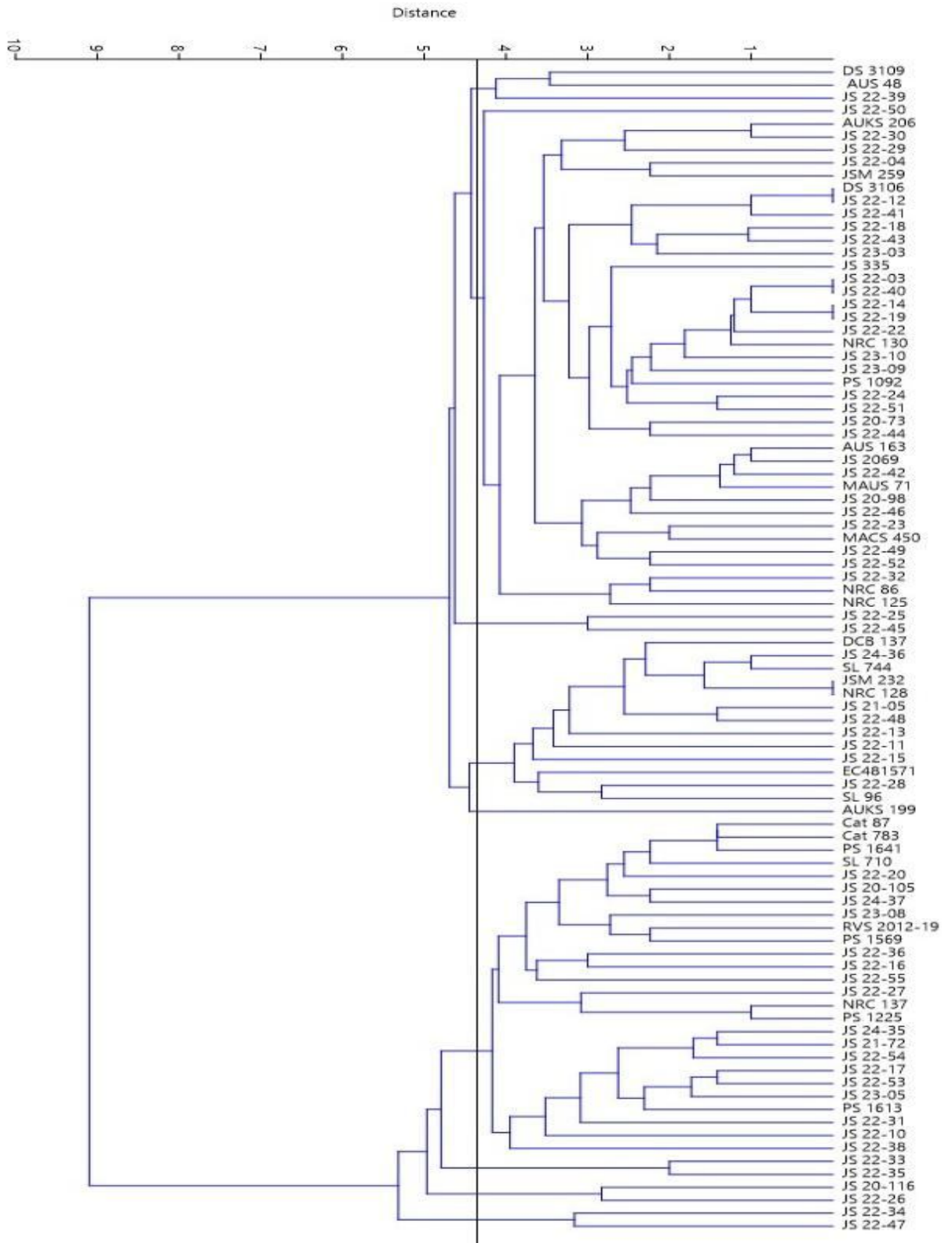


Figure 4 Dendrogram showing relationship among soybean genotypes based on different morphological trait

CONCLUSIONS

Genetic resources provide the foundation for selection and improvement via breeding to fulfill the world's ever-increasing food security demands. On the other hand, systematic characterization leads to more efficient utilization of the material in the soybean development programme. The high market price and profitability for farmers are due to the large variety in seed colour inherent in the germplasm. After establishing the characteristics' stability and heritability, genotypes with this morphology can be selected as a donor in the crossing operation.

REFERENCES

- Agarwal, D.K., Billore, S.D., Sharma, A.N., 2013. Soybean: Introduction, improvement and utilization in India problems and prospects. *Agricultural Research* 2, 293-300
- Alpna, P., Pushpendra, K., Singh, K., Gupta, M. K. and Bhareti, P. (2015). Morphological Characterization and Genetic Divergence Study in Soybean. *Soybean Research*, 13(2): 01-08.
- Amrate, P.K., Shrivastava, M.K., Pancheshwar Dinesh, K., Stuti, S., (2020). Charcol rot and yellow mosaic virus disease of soybean under hot spot condition: symptoms, incidence and resistance characterization. *International Journal of Bio-Resource and Stress Management* 11(3), 268–273.
- Anonymous (2008). Proceedings and technical programmes. 42nd Annual group meeting CSK Himachal Pradesh Krishi Vishwavidyalaya, Palampur.68pp.
- Anonymous, 2020. The soybean processors association of India (SOPA) report. Available at <http://www.sopa>.
- Banerjee, J., Shrivastava, M.K., Amrate P.K., Singh, Y., Upadhyaya, A., Soni, M., (2022) Genetic variability and association of yield contributing traits in advanced breeding lines of soybean. *Electronic Journal of Plant Breeding*, 13(2)
- Bellaloui, N., Smith, R. J., Ray, J. D. and Anne, G. M. (2017). Evaluated exotically derived Soybean Breeding Lines. *International Journal of plant breeding*, 6(9): 112- 125.
- Bhakuni, V., Shukla, P. S., Singh, K. and Kumar, V. (2017). Morphological Characterization and Assessment of Genetic Variability in Soybean Varieties. *International Journal of Current Microbiology and Applied Sciences*, 6(3): 361-369.
- Dhaliwal, I., Khosla, G., Singh, T. P., Gill, G. S. and Kaushik, P. (2020). DUS Characterization of some Released Varieties and Advanced Breeding Lines of Soybean (*Glycine Max L.*) under Punjab Agroclimatic Conditions. *International Journal of Current Microbiology and Applied Sciences*, 9: 2124-35.

- Dubey, N., Shrivastava, A. N., Avinash, H. A. and Jaiwar, S. (2015). Genetic variability, correlation and path analysis for yield and yield contributing characters in soybean [*Glycine max* (L.) Merrill]. *Electronic Journal of Plant Breeding*, 6(1): 318-325.
- Hare, J. D. and Elle, E. (2002). Variable impact of diverse insect herbivores on dimorphic *Daturawrightii*. *Ecology*, 83(3): 2711-2720.
- Kumar, S., Kumari, V., Kumar, V., 2020. Genetic variability and character association studies for seed yield and component characters in soybean [*Glycine max* (L.) Merrill] under North-western Himalayas. *Legume Research* 43(4), 507–511.
- Malek, M.A., Mohd, Y., Afroz, M. S. S., Nath, U. J. and Mondal, M. A. (2014). Morphological Characterization and Assessment of Genetic Variability, Character Association, and Divergence in Soybean Mutants. *The Scientific World Journal*, 14(3): 1-12.
- Mehra, S., Shrivastava, M.K., Amrate, P.K., Yadav, R. B., 2020. Studies on variability, correlation coefficient and path analysis for yield associated traits in soybean [*Glycine max* (L.) Merrill]. *Journal of Oilseeds Research* 37(1), 56–59.
- Pawale, S. T., Chimote, V. P. and Deshmukh, M. P. (2019). Morphological observations for various DUS characters in crossed between trypsin inhibitor free and expressing soybean (*Glycine Max* L. Merrill.) genotypes. *Journal of Pharmacognosy and Phytochemistry*, 8: 1082-86.
- PPV & FRA. (2018). Guidelines for the Conduct of Test for Distinctness, Uniformity and Stability on Soybean (*Glycinemax* (L.) Merrill) <https://plantaauthority.gov.in/sites/default/files/fsoyabe an.pdf>
- Ramteke, R. and Murlidharan, P. (2012). Characterization of soybean (*Glycine max*) varieties as per DUS guidelines. *Indian Journal of Agricultural Sciences*, 82(7): 572–577.
- Ramteke, R., Murlidharan, P., Shivakumar, M., Gireesh, C. and Ramesh, S. V. (2015). Morpho-agronomic characterization of Indian soybean for grouping and varietal protection. *Indian Journal of Genetics and plant breeding*, 75(3): 382-385.
- Sawarkar, S. S. (2010). Morphological and Biochemical Characterization of Mutants and Elite Lines of Soybean [*Glycine max* (L.) Merrill.]. M.Sc. Thesis, JNKVV, Jabalpur. 67p.
- Singh, S., Kapila, R., Kanwar, R. and Dhiman, K. (2021). Characterisation of Soybean Varieties of Himachal Pradesh Using Morphometric Descriptors. *Himachal Journal of Agricultural Research*, 47(1): 50-60.
- Soni et al (2020)
- Talla, R., Patta, S. and Rani, K. J. (2016). Characterization of soybean [*Glycine max* (L.) Merrill.]. Genotypes based on qualitative pod and seed characters. *Progressive Research-An International Journal*, 1(2): 907-910.

Thakur, S., Mishra, G., Pachori, S., & Babbar, A. (2022). Characterization of Morphological Traits and Diversity Assessment of Desi Chickpea (*Cicer arietinum* L.) Lines. *Biological Forum – An International Journal*, 14(1): 481-486

Uikey S, Sharma S, Amrate Pawan K. and Shrivastava M. K. (2022) Identification of Rich Oil-Protein and Disease Resistance Genotypes in Soybean [*Glycine max* (L.) Merrill]. *International Journal of Bio-resource and Stress Management*, 13(5), 497-506. [HTTPS://DOI.ORG/10.23910/1.2022.2478](https://doi.org/10.23910/1.2022.2478).

Vandana, B., Shukla, P. S., Singh, K. and Singh, V. K. (2017). Morphological Characterization and Assessment of Genetic Variability in Soybean Varieties. *International Journal of Current Microbiology and Applied Sciences*, 6(3): 361-369

Table 1: Distribution of ninety genotypes based on Sixteen DUS traits of soybean

S. No.	Traits	Class	Note/Score	Frequency	% age
1	Hypocotyl: anthocyanin pigmentation	Absent	1	32	35.55
		Present	9	58	65.55
2	Growth type	Determinate	1	22	24.44
		Semi-Determinate	5	68	75.55
3	Growth habitat	Erect	1	9	10
		Semi-erect	3	81	90
4	Leaf shape	Lanceolate	1	14	15.55
		Triangular	2	1	1.11
		Pointed Ovate	3	75	83.33
5	Leaf size	Small	3	2	2.22
		Medium	5	86	95.55
		Large	7	2	2.22
6	Leaf colour	Light Green	3	1	1.11
		Green	5	82	91.11
		Dark Green	7	7	7.77
7	Flower colour	White	1	46	51.11
		Violet	2	44	48.89

8	Pod hairiness	Glabrous	0	14	15.56
		Pubescent	1	76	84.44
9	Pod pub colour	Absent	0	14	15.55
		Grey	1	15	16.66
		Towny Brown	2	61	67.77
10	Pod intensity of brown colour	Light	3	27	30
		Medium	5	52	57.77
		Dark	7	11	12.22
11	Seed size	Small	3	18	20
		Medium	5	58	64.44
		Large	7	14	15.55
12	Seed shape	Spherical	1	20	22.22
		Spherical Flattened	2	70	77.77
13	Seed coat colour	Yellow	1	76	84.44
		Yellow green	2	14	15.55
14	Seed hilum colour	Imperfect black	1	57	63.33
		Brown	3	31	34.44
		Black	5	2	2.22
15	Seed coat Lustre	Shiny	3	13	14.44
		Intermediate	5	70	77.77
		Dull	7	7	7.77
16	Colour of funicle	Brown	1	90	100
		Black	2	0	0