

Sex Determination by Metric Analysis of Coronoid and Mental Breadth of the Mandible.

Comment [SM-T2951]: revise to indicate the specific tribe and/or population of study.

ABSTRACT

Aim: This research aimed at investigating the applicability of linear measurements of Bicornoid and Bimental Breadth of mandible in sex determination in Nigerian population.

Study design: A cross-sectional descriptive study was adopted for this research.

Place and Duration of Study: Anthropometric data were obtained from adult mandibles from selected medical schools across four geo-political zones in Nigeria from January to June 2021.

Methodology: 52 males and 30 females mandibles were used for this study. Bicornoid Breadth (BRB) and Bimental Breadth (BMB) were measured using vernire caliper and data analyzed using SPSS IBM version 23.0.

Results: Descriptive analysis of BRB and BMB showed higher mean values for males 98.25mm and 45.79mm than females 90.99mm and 44.03mm respectively. Independent t-test analysis of the parameters showed significant sexual difference at 95% confident interval. The discriminant function analysis sufficiently discriminated sex and after cross-validation, BRB accurately predicted 82.7% males and 53.3% females while BMB accurately predicted 84.6% males and 26.7% females.

Conclusion: Bicornoid and Bimental breadth measurements of mandible are recommended for sex determination in forensic investigation due to its role in sexual dimorphism.

Keywords: (measurement, bicornoid, Bimental breadth, mandible, Sex, Forensic investigation).

Comment [SM-T2952]: Your sample size is grossly insufficient for the country population. Be specific on the tribe and/or region of study.

Comment [SM-T2953]: venier

INTRODUCTION

Identification of human in any society is critical in forensic, social and personal purposes^[1]. The forensic means have several methods for identifying individual^[2]. Conclusive methods, such as fingerprinting, iris reading, DNA etc are very important, but in situations where the individual is in an advanced state of putrefaction or when only bone fragments are available, anthropometric data becomes equally important as many methods are no longer an option. In such case, the evaluation of the skeleton often becomes the only alternative to obtain the identification of the deceased^[3,4]. This circumstance underscores the relevance of the classical anthropological examinations in building a biological profile in terms of age, sex, ancestry, and stature which is fundamental in the human identification process.

Comment [SM-T2954]: body remains

Sex determination is essential in the identification process of an individual alive or dead. Sex determination of bone is a very important part of study in Anthropology and Forensic science and can be achieved through morphological and metric methods. It is the first step involved in the development of any biological profile as it provides a better understanding of other elements such as the determination of stature and age at death^[5]. In human sex identification, the pelvic and cranial bones are highly reliable; however, in the absence of the pelvic bones, analysis of the mandible may be the best alternative due to its strong sexual dimorphism^[6,7].

Comment [SM-T2955]: remove

The mandible is a moveable, U-shaped bone that forms the chief articulating segment of the skull^[8]. It is one of the bones of the face considered to be the largest and hardest facial bone, that commonly resist post mortem damage and forms an important source of information on sexual dimorphism^[8,9,10]. Measurements of the mandible are important not only to address surgical or clinical issues, but also to answer forensic questions of age, sex and stature estimation or to characterize different populations^[11,12]. The advantage of metric analysis is that it eliminates subjectivity in the analysis of morphological characteristics, increasing confidence in the results^[13], and data obtained can easily be compared with other studies^[14]. According to Rai and Kaur^[15], sex of an unknown individual can be determined based on the data from the morphology and metric features of skull and mandible. Morphologically, male mandibles are large with prominent muscular markings and are slightly more robust than the female mandibles^[16,17,18]. They are further distinguished by chin shape, gonial (angle) appearance and gonial flare^[17].

Comment [SM-T2956]: remove underline

Previous studies on sex determination in different populations using the mandible^[7,19,20,21,22,23,24,25] emphasized the need for population specific standards to be set because standards for sex determination valid for one population may not be useful for another^[17,26]. In this study, Bicornoid and Bimental Breadth measurements of mandible were considered as indicators for sex determination and the study aimed to determine the efficacy of these parameters in sex determination among Nigerians.

Comment [SM-T2957]: 19-25

MATERIAL AND METHODS

This research made use 82 (52 males and 30 females) dry adult mandibles obtained from medical institutions across four geo – political zones (South – South, South – East, North Central and South – west) in Nigeria. The mandibles used were first categorized into male and female using non-metric (morphological) parameters; viz:

Comment [SM-T2958]: involved

- i. Gonial flare - everted in males but inverted in females.
- ii. Chin shape - square in males but rounded or pointed in females.
- iii. Angle appearance: In males the lateral aspect of the mandibular angle shows rough appearance while in females it is comparatively smooth.
- iv. Size: Male mandibles are robust, larger, and broader while female mandibles are slender and smaller.

Comment [SM-T2959]: indicate the reference source of this information

This categorization was done on the basis where at least three traits clearly suggested a particular sex.

Data were collected from mandibles that satisfied the inclusive criteria.

Each bone was carefully inspected to ascertain that they were in good condition from the knowledge of their anatomy before they were selected for the study. Pathological, deformed, damaged, or broken bones were excluded to avoid errors in measurement and only firmly and properly ossified bones with evidence of complete dentition were included.

Comment [SM-T29510]: use a better description

Comment [SM-T29511]: add full stop

Two parameters were measured from each mandible using digital vernier caliper as described by Vinay *et al.*; Maria *et al.*^[18,27]

1. **Bicornoid breadth:** the straight horizontal distance between the lateral points on the two coronoid processes (*coronion*); measured using digital vernier caliper (fig 2).
2. **Bimental breadth:** the straight distance between the most inferior points on the margin of the mandibular mental foramen; measured using digital vernier caliper (fig 3).



Figure 1: Digital Vernier Caliper

Comment [SM-T29512]: use correct spelling



Figure 2: Biconoid breadth measured using digital vernier caliper (mm)

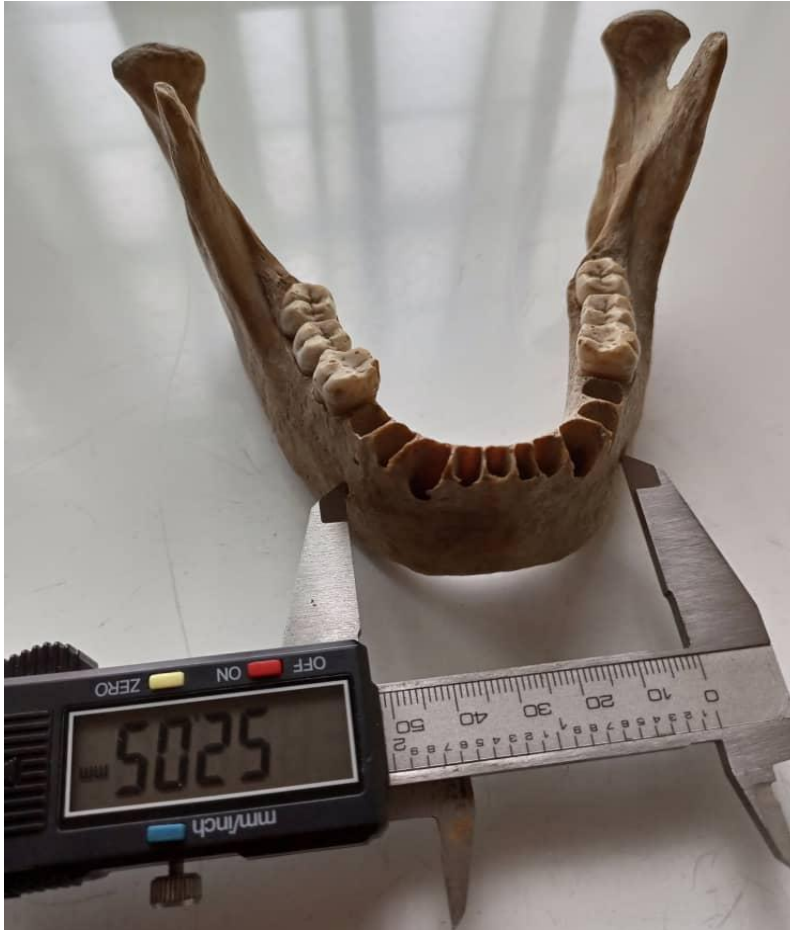


Figure 3: Bimental breadth measured using digital vernier caliper (mm)

Data collected were analyzed using Statistical Package for the Social Sciences (SPSS IBM version 23.0) Mandibular parameters were expressed as mean \pm SD (cm) in descriptive statistics Independent sample t-test was done to test for sexual dimorphism. Discriminant function analysis was used to discriminate sex. Confidence interval was set at 95%, and therefore $p < .05$ was considered significant.

RESULTS

Table 1 shows result for Descriptive statistics of mandibular parameters Males were seen to have higher mean values than females in both measured parameters.

Table 2 shows the results for the assessment of sexual dimorphism.

Comment [SM-T29513]: There should also be a comparison of the study mandibular dimensions with results from other populations and countries.

Constant	-14.98								
BMB	0.36	1.00	0.91*	0.23	-0.40	86.5	26.7	84.6	26.7
Constant	-16.23								

DISCUSSION

The demand to statistically present data to prove a point in tribunals has made the use of metric method in sex determination gain popularity and increasing importance. This study evaluated two metric parameters of the mandible in order to document its role in sexual dimorphism in Nigerian population.

In the current research, for each parameter, the male mean values were greater than the female mean values. This is consistent with research conducted in Central Indian population and Brazilian population^[28,29].

The two parameters measured on the mandibles of Nigerian population showed significant sex differences between males and females, indicating that the mandible is sexually dimorphic in this population. Therefore, the discriminant function equations derived from these parameters may be used for sex determination (Table 3). Similar conclusions were cited in other works^[30,31]. However, Kanchankuma reported no statistically significant sexual difference in BRB^[28].

The discriminant function equation developed from BRB in this study accurately predicts 82.7% of males and 53.3% of females in this population whereas Bertsatos *et al.*, (2019) reported accurate sex prediction of 65.6% in Athens Greece. Similarly, equation developed from BMB accurately predicts 84.6% of males and 26.7% of females whereas Bertsatos *et al.*, (2019) reported 64.7% accuracy of sex prediction in Athens Greece.

CONCLUSION

Bicoronoid and Bimental breadth of the mandible are reliable parameters for sex determination in Nigerian population. Both parameters showed significant sexual difference. The discriminant equation derived from BRB and BMB effectively discriminated sex though BRB was shown to be a better discriminator with higher predictability accuracy.

ETHICAL APPROVAL

Ethical approval was sought for and obtained prior to the commencement of the study from the research Ethics Committee of University of Port Harcourt.

REFERENCES

1. Dong, X. Y., He, S., Zhu, L., Dong, T. Y., Pan, S. S., Tang, L. J. and Zhu, Z. F. The Diagnostic Value of High-Resolution Ultrasonography for the Detection of Anterior disc Displacement of the Temporomandibular Joint: A Meta-Analysis Employing the HSROC Statistical Model. *International Journal of Oral and Maxillofacial Surgery*. 2015; 44: 852-858.
2. Adserias-Garriga, J., Thomas, C., Ubelaker, D. H. and Zapico, S. C. When Forensic Dentistry Met Biochemistry: Multidisciplinary Approach in Forensic Human Identification. *Archives of Oral Biology*. 2018; 87: 7-14.
3. Carneiro, A. P. C., Andrade, L. M., Fraga, F. J. O. and Duarte, M. L. Application of Post-Mortem Human Identification Methods at the Estácio de Lima IML from January 2011 to December 2015. *Perspectives in Legal Medicine and Medical Expertise*. 2017; 2: 10-15.

Comment [SM-T29516]: The discussion is too scanty. The authors need to really do more in this section.

Comment [SM-T29517]: The bicoronoid

Comment [SM-T29518]: indicate the approval number and date

4. Zheng, L., Shoutao, N., Wang, Y., Zhang, B.; Teng, Y. and Jiang, S. Sex Determination of Han Adults in Northeast China Using Cone Bean. *Forensic Science International*. 2018; 289: 450e1 - 450e7
5. Peckmann, T., Meek, S., Dilkie, N. & Rozendaal, A. Determination of sex from the patella in a contemporary Spanish population. *Journal of Forensic and Legal Medicine*. 2017;44: 110-116.
6. Moore, M. K. *Sex Estimation and Assessment*. In: DiGangi, E. A. & Moore, M. K. (Eds.). *Research Methods in Human Skeletal Biology*. 2013; pp.99-116.
7. Alves, N. and Deana, N. Sex prediction from metrical analysis of macerated mandibles of Brazilian adults. *International Journal of Morphology*. 2019; 37(4): 1375-1381.
8. Ahamed, T., Khan, H. S. and Sharieff, J. H. Observation on Morphological Features of Human Mandibles in 200 South Indian Subjects. *Anatomica Karnataka*. 2011; 5(1):44-49.
9. Duric, M., Rakocevic, Z. and Donic, D.. The reliability of sex determination of skeletons from forensic context in the Balkans. *Forensic Science International*. 2005; 147:159- 164.
10. Nagaraj, T., Veerabasvaiah, B. T., James, L., Goswami, R. D., Narayanan, S. and Keerthi, I. Use of non-metric characteristics of mandible in sex determination. *Journal Medicine Radiology Pathology Surgery*. 2016; 3(4): 1-4.
11. Preissler, S., Verhoff, M. A., Ramsthaler, F., Holz, F., Gehl, A. and Koelzer, S. C. Morphometric Investigations to Assess the Compatibility of Mandible and Skull. *Forensic Science International*. 2018; 286: 193-198
12. Coogan, J. S., Kim, D. G., Bredbenner, T. L., and Nicolella, D. P. Determination of Sex Differences of Human Cadaveric Mandibular Condyles Using Statistical Shape and Trait Modeling. *Bone*. 2018; 106: 35-41
13. Dabbs, G. R. and Moore-Jansen, P. H. A method for estimating sex using metric analysis of the scapula. *Journal of Forensic Sciences*. 2010; 55(1):149-152.
14. D'Eyrames, G., Siegmund, F. and Papageorgopoulou, C. Discriminant function analysis versus morphognostic sex determination of 637 crania from the Poschiavoossuary. *BulletinderSchweizerischenGesellschaftffür Anthropologie*. 2009; 15(1-2):57-63.
15. Rai, B. and Kaur, J. Sex determination methods in forensic odontology. *Evidence-Based Forensic Dentistry*. 2013; 73-79.
16. Reddy, K. S. N. Identification. *The essentials of forensic medicine and toxicology*. 24th Edition. Hyderabad: K Suguna Devi. 2005; pp. 79-81.
17. Vodanovic M. Odontometrics: a useful method for sex determination in an archaeological skeletal population. *Journal of Archaeological Science*. 2006; 1- 9.
18. Vinay, G., Mangala, G. S. R. and Anbalagan, J. Sex Determination of Human Mandible Using Metrical Parameters. *Journal of Clinical Diagnostic Research*. 2013; 7(12): 2671-2673.
19. Hu, K. S., Koh, K. S., Han, S. H., Shin, K. J. and Kim, H. J. Sex determination using nonmetric characteristics of the mandible in Koreans. *Journal of Forensic Science*. 2006; 51(6):1376-1382.
20. Dayal, M. R., Spocter, M. A. and Bidmos, M. A. An assessment of sex using the skull of black South Africans by discriminant function analysis. *Homo*. 2008; 59(3):209-21.

21. Franklin, D., O'Higgins, P. and Oxnard, C.E. Discriminant function sexing of the mandible of indigenous South Africans. *Forensic Science International*. 2008; 179(1):84–85.
22. Aprajita, S. and Anjali, J., Sex determination of mandible: a morphological and morphometric analysis. *International Journal of Contemporary Medical Research* 2016; 3(7):1869-1872.
23. Pangotra, N., Chalkoo, A. H., Dar, N. Mandibular Ramus: An Indicator for Gender Determination - A Digital Radiographic Study. *International Journal Scientific Study*. 2018; 6(7): 42-45.
24. Saloni, V. P., Mahajan, P., Puri, A., Kaur, S. and Mehta, S. Gender determination by morphometric analysis of mandibular ramus in sriganaganagar population: A digital panoramic study. *Indian Journal Dental Research*. 2020; 31(3): 444–448.
25. Elsayed, R. M., Hilal, M. A., Mahmoud, H. M. and Said, A. M. Determination of sex from various measurements of mandibular ramus and mental foramen parameters using digital panoramic imaging in a sample of sohag governorate population. *The Egyptian Journal Forensic Science Applied Toxicology*. 2021; 21(1): 95-112.
26. Chantal Milani, Rolando Milani, Gian Luigi Panattoni. Stature Estimation for Personal Identification Using Mandibular Morphometric Parameters in Italian Population: *Journal of Biological Research*. 2014; 87:2130 15-17)
27. Maria, I. C. B., Edgard, M. C., Bianca, M. S., Evelyne P. S., Marcus V. D. de C., Patricia M. R., Luiz F. J., Adriana C. de A. and Reginaldo I. C. C. Quantitative analysis of the mandible for sex estimation. *Journal of Research, Society and Development*. 2021; 10(4): 1-12.
28. Kanchankumar P. W., Rajesh V. B., Gunwant R. C., and Namdeo Y. K. Determination of sex by discriminant function analysis of mandibles from a Central Indian population. *Journal of Forensic Dental Sciences*. 2015; 7(1): 37–43. doi: 10.4103/0975-1475.150304
29. Thais, T. L., Edgard, M. C., Eduardo, de N. B., Luiz, A. S. de P., Diogo, C. B. S., and Maria, G. H. B. Accuracy of mandibular measurements of sexual dimorphism using stabilizer equipment. *Brazilian oral research*. 2017; vol.31 .0001.
30. Kumar J. S. and Yuvaraj B. K. Sex Determination Using Human Mandible. *Journal of Pharmaceutical Sciences and Research*, 2016; 8(6): 487-490.
31. Bertsatos, A., Athanasopoulou, K. and Chovalopoulou, M. E. Estimating sex using discriminant analysis of mandibular measurements from a modern Greek sample. *Egyptian Journal of Forensic Sciences*, 2019; 9(1):1-12.