

Effect of transplanting dates and varieties on the vegetative growth, yield, and yield components of tomato (*Solanumlycopersicum* L.)

ABSTRACT

The study was carried out in the Research field of the Regional Agricultural Research Station (RARS), Hathazari, Chittagong, Bangladesh from November 2019 to April 2020 to observe the effect of transplanting date and variety for tomato production. Eight open-pollinated tomato varieties viz. BARI tomato-2, BARI tomato-3, BARI tomato-14, BARI tomato-15, Marglobe, Roma VF, Riograndi, and Khattabegun were considered as the factor A and two transplanting dates viz. 18th December 2019 and 18th January 2020 were considered as factor B. The study was laid out in factorial Randomized Complete Block Design (RCBD) with three replications. Different transplanting dates and varieties showed significant effects on the vegetative growth and yield of tomato. In 18th December transplanting, the highest number of fruits per plant was recorded in BARI Tomato-3 (46.87), followed by BARI Tomato-14 (43.22), while the lowest number of fruits per plant was recorded in variety Marglobe (13.00). Khattabegun variety had the maximum number of fruits per plant (14.17), followed by BARI tomato-3 (14.02) and BARI tomato-14 (13.97) on transplanting date 18th January. In 18th December transplanting, the highest yield was obtained from BARI tomato-14 (38.55 ton ha⁻¹), followed by BARI tomato-3 (38.16 ton ha⁻¹), while the lowest yield was found in variety Riograndi (9.17 ton ha⁻¹). The highest yield was recorded in BARI tomato-15 (12.10 ton ha⁻¹), while the lowest yield was observed in local variety Khattabegun (6.25 ton ha⁻¹) on transplanting date 18th January. Therefore, it is concluded that BARI Tomato-14 and BARI Tomato-3 with a combination of transplanting date in 18th December was noted as the best combination to get the optimum yield of tomato.

Keywords: Tomato, transplanting date, variety, yield, disease infestation, pest infestation

1. INTRODUCTION

Tomato (*Solanumlycopersicum* L.) is the World's second most significant and consumed vegetable crop, with a global production of 186,821,216 metric tons and cultivated on 5,051,983 hectares in 2020 [1]. Because of its multiple uses, nutritional advantages, and the rapid changes in global food systems, the tomato is currently the most important marketable vegetable crop in the world [1,2]. Annual tomato production has been expanded by more than six-fold in the previous fifty years, while global traffic in tomatoes and tomato products has increased by about tenfold. Furthermore, from 1961 to 2018 per capita, tomato consumption increased dramatically from 8 kg to 21.17 kg per day [1]. Tomatoes contribute significantly to human nutrition since they are a good source of vitamins, essential minerals,

26 macronutrients, bioactive compounds, and antioxidants, all of which help to prevent cancer,
27 cardiovascular disease, eye, nerve, and other diseases [3-9].

28

29 Tomato quality is affected by climate, growing medium and plant nutrition [10]. Transplanting
30 periods have a significant relation with local climatic variability. Different transplanting dates
31 and varieties have significant effect on the yield of tomato [11]. Plant maturity, harvesting
32 date, yield, and crop quality can be affected by transplanting date. At the pre-flowering and
33 blooming stages, the high temperature (32°C) significantly reduced photosynthetic rate,
34 number of fruits, individual fruit weight, and fruit output per plant. Temperature impacts were
35 more during blooming than pre-flowering [12]. Agronomic practices have long been
36 recognized as critical to crop nutrition [13]. The nutritional value of tomato is controlled by
37 the tomato variety and harvest maturity [14]. Delayed transplanting reduces the plant height,
38 fruit set, fruit weight, and yield of tomato. Appropriate transplanting date boost production as
39 well as improve the fruit quality [11,15]. It is in high demand throughout the year, while most
40 of the tomato production in Bangladesh takes place in winter [16,17].

41 In the eastern side of Bangladesh including the Chittagong Hill Tracts areas, farmers have
42 been cultivating tomato between October to March without knowing the best date for
43 transplanting of tomato. Due to a lack of knowledge of transplanting date, the tomato growers
44 had not got maximum production though they used improved varieties. Therefore, the
45 experiment was conducted to investigate the impact of transplanting dates and varieties on
46 tomato production in the eastern regions of Bangladesh.

47

48 2. MATERIAL AND METHODS

49

50 The experiment was conducted from November 2019 to April 2020 in the research field of
51 Regional Agricultural Research Station (RARS), Bangladesh Agricultural Research Institute
52 (BARI), Hathazari, Chittagong, Bangladesh. During the experimental period, the data of
53 different environmental factors i.e., maximum and minimum rainfall (mm), maximum and
54 minimum temperature (°C), and relative humidity (%) were collected from the weather
55 station of RARS research field, Hathazari (Figure 1). A total of eight tomato varieties
56 including four BARI varieties (BARI tomato-2, BARI tomato-3, BARI tomato-14, and BARI
57 tomato-15), three commercial varieties (Marglobe, Roma VF, and Riograndi), and one local
58 variety Khattabegun were used in this study. Seedling of the all varieties were grown in the
59 nursery and 30-days old seedlings were transplanted in the main field in two different dates;
60 18th December 2019 and 18th January 2020. The study was laid out in factorial Randomized
61 Complete Block Design (RCBD) with three replications. Plot dimensions were 4m x 3m with
62 plant spacing of 70cm x 45cm. Urea, TSP, MoP, and Gypsum were applied @ 500, 200,
63 200, and 100 kg ha⁻¹, respectively in addition to the 10 ton ha⁻¹ of cowdung manure [18].
64 Half of the cowdung manure with all TSP and MoP were applied to the land during final land
65 preparation. The remaining cowdung manure was utilized to prepare the pit. The total
66 amount of urea was applied in three equal instalments at 21, 35, and 45 days after
67 transplanting. All necessary intercultural operations were carried out through the whole
68 growing period. Plant height at first harvest, days to 50% flowering, no. of fruit clusters per
69 plant, no. of fruits per plant, fruit yield per plot (kg), individual fruit weight (g), fruit length
70 (cm), fruit girth (cm), and total yield (ton ha⁻¹) were recorded. However, fruit length (cm) and
71 fruit girth (cm) were measured by slide calipers. Moreover, the disease i.e., bacterial wilt,
72 early blight, and tomato leaf curl virus infested plants were counted from each plot in fifteen
73 days interval from vegetative stage to final harvest, while the number of tomato fruits were
74 counted infested by fruit borer during harvest and converted into percent. The statistical
75 analysis was performed using the CropStat 7.2 Software [19].

76

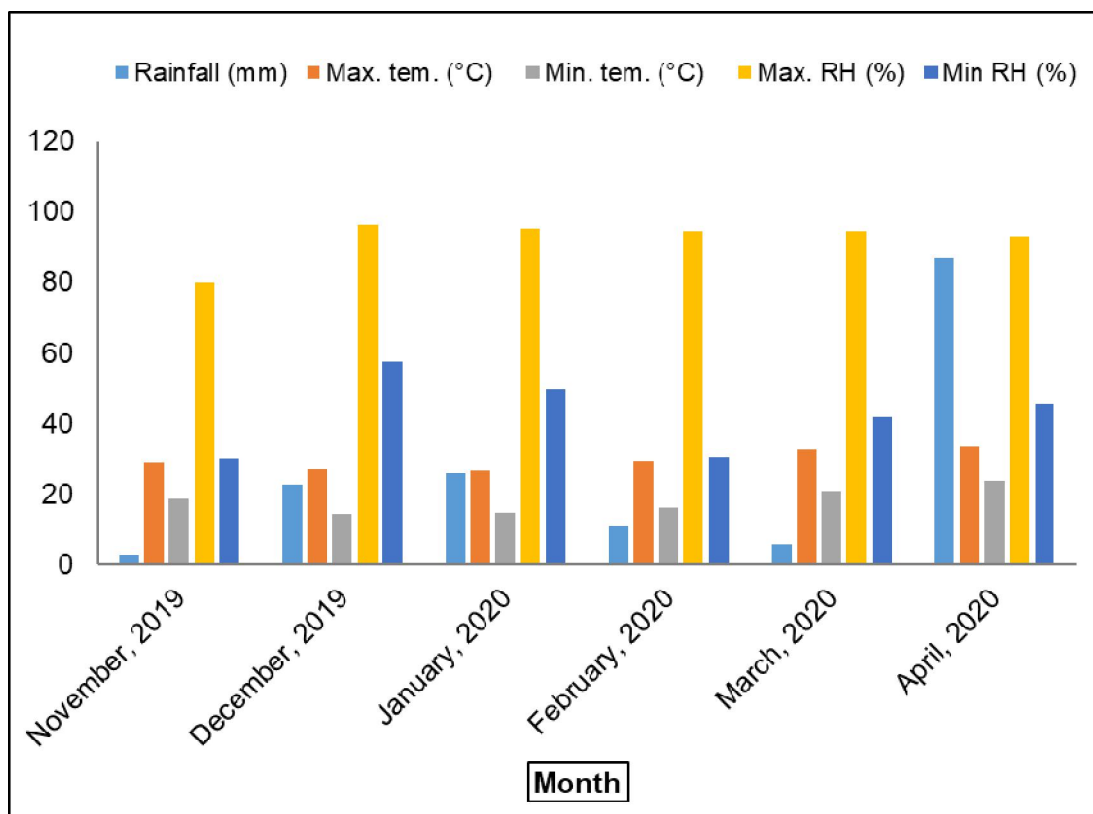


Fig. 1. Monthly weather data during tomato growing period.

3. RESULTS

3.1 Effect of transplanting dates and varieties on the vegetative growth, yield and yield components of tomato

There were significant differences among the variables showed in Table 1, Table 2, and Table 3. Some crucial parameters showed significant differences in tomato varieties ($p \leq 0.05$). Plant height at first harvest was found to be significantly affected by transplanting dates and varieties, whereas the tallest plant was recorded in local tomato variety Khattabegun (118.40 cm and 108.84 cm), followed by BARI tomato-14 (111.47 cm and 91.07 cm) at transplanting dates 18th December and 18th January, respectively. The commercial variety Roma VF had the lowest plant height (46.15cm and 41.01cm) at transplanting dates 18th December and 18th January, respectively. Days to 50% flowering were significantly affected by transplanting dates and varieties. Roma VF was reached days to 50% flowering within long period of time (50.67 and 41.49 days after transplanting), whereas BARI tomato-2 required short period of time (34.33 and 25.00 days after transplanting) at transplanting dates 18th December and 18th January, respectively (Table 1).

Table 1. Effect of transplanting date and variety on plant height at 1st harvest, days to 50% flowering, no. of fruit clusters per plant, no. of fruits per plant, and fruit yield per plot.

77
78
79
80
81
82
83
84
85
86
87
88
89
90
91
92
93
94
95
96
97
98
99
100
101
102
103

Varieties	Plant height at 1 st harvest		Days to 50% flowering		No. of fruit clusters per plant		No. of fruits/plant		Fruit yield/plot	
	18 th Dec.	18 th Jan.	18 th Dec.	18 th Jan.	18 th Dec.	18 th Jan.	18 th Dec.	18 th Jan.	18 th Dec.	18 th Jan.
	BARI tomato-2	64.67	52.03	34.33	25.00	9.84	3.12	33.53	12.28	39.75
BARI tomato-3	70.37	48.27	37.00	25.33	10.27	2.68	46.87	14.02	46.33	11.70
BARI tomato-14	111.47	91.07	38.67	26.33	10.47	2.68	43.22	13.97	48.26	8.80
BARI tomato-15	74.27	63.80	34.33	27.00	10.67	2.67	36.23	11.46	41.11	14.30
Marglobe	73.77	56.90	43.33	37.80	7.00	4.27	13.00	7.26	15.16	11.20
Roma VF	46.15	41.01	50.67	41.94	7.40	5.93	19.00	10.44	16.40	10.98
Riograndi	51.84	42.90	35.00	34.39	12.15	6.00	30.33	10.77	10.77	9.50
Khattabegun	118.40	108.84	48.33	43.69	6.24	6.30	27.33	14.17	13.28	7.50
LSD ($p \leq 0.05$)	V=3.86 SD=5.10 V x SD=5.46		V=2.98 SD=3.95 V x SD=4.21		V=0.76 SD=0.95 V x SD=1.07		V=2.73 SD=1.47 V x SD=3.86		V=2.65 SD=3.98 V x SD=3.75	

104

105

106 The number of fruit clusters per plant significantly affected by transplanting dates and
 107 varieties. The variety Riograndi had the highest number of fruit clusters per plant (12.15),
 108 followed by BARI tomato-14 (10.67), BARI tomato-15 (10.47), and BARI tomato-3 (10.27)
 109 at the transplanting date 18th December. In 18th December transplanting, local variety
 110 Khattabegun had the lowest number of fruit clusters per plant (6.24) (Table 1).

111 BARI tomato-3 had the highest number of fruits per plant (46.87), followed by BARI tomato-
 112 14 (43.22), while the variety Marglobe had the lowest number of fruits per plant (13.00) at
 113 the transplanting date 18th December. In 18th January transplanting, BARI tomato-3 and
 114 BARI tomato-14 were second and third with 14.02 and 13.97 fruits per plant, respectively.

115 The highest fruit yield per plot was noted in BARI tomato-14 (48.26 kg) and the lowest was in
 116 variety Riograndi (10.77 kg) in 18th December transplanting, while the maximum fruit yield per
 117 plot was observed in BARI tomato-15 (14.30 kg) and minimum was in local variety
 118 Khattabegun (7.50 kg) on transplanting date 18th January (Table 1).

119

120 Individual fruit weight was significantly affected by transplanting dates and varieties.
 121 Individual fruit weight 168.54 g and 97.29 g were recorded for variety Marglobe, while
 122 70.49g and 63.53g were recorded for Khattabegun in 18th December and in 18th January
 123 transplanting, respectively (Table 2). The maximum fruit length was recorded in the
 124 variety Marglobe (6.30cm and 5.87cm), whereas the minimum fruit length was observed in
 125 the local variety Khattabegun (3.94cm and 3.91cm) in 18th December and 18th January
 126 transplanting, respectively (Table 2).

127

128

129

130 **Table 2. Effect of transplanting date and variety on individual fruit weight, fruit length,**
 131 **fruit girth, and total yield.**

132

Varieties	Individual fruit wt. (gm)		Fruit length (cm)		Fruit girth (cm)		Total yield (ton ha ⁻¹)	
	18 th Dec.	18 th Jan.	18 th Dec.	18 th Jan.	18 th Dec.	18 th Jan.	18 th Dec.	18 th Jan.
	BARI tomato 2	120.85	67.87	5.81	4.72	6.17	4.44	31.01
BARI tomato 3	92.80	63.87	5.60	4.23	5.18	4.47	38.16	9.75
BARI tomato 14	94.65	63.00	6.10	5.26	4.99	5.86	38.55	8.89
BARI tomato 15	85.53	67.83	5.82	4.06	5.10	4.64	33.42	12.10
Marglobe	168.54	97.29	6.30	5.87	5.59	4.74	16.24	9.33

Roma VF	84.96	66.37	5.97	5.48	5.01	4.64	13.94	9.31
Riograndi	80.25	77.48	5.67	5.44	4.49	5.40	9.97	7.36
Khattabegun	70.49	65.53	3.94	3.91	2.46	2.88	10.23	6.25
LSD ($p \leq 0.05$)	V=8.61 SD=3.71 V x SD=12.17		V=0.55 SD=NS V x SD=0.78		V=0.48 SD=NS V x SD=0.67		V=2.81 SD=3.07 V x SD=3.98	

133

134

135 There was no significant effect of transplanting date on fruit girth. BARI tomato-2 had the
136 highest fruit girth of 6.17cm, whereas the lowest fruit girth was 2.46cm in
137 variety Khattabegun in 18th December transplanting. When the BARI tomato-14 was
138 transplanted in 18th January, the maximum fruit girth was 5.86cm and the minimum was
139 2.88cm.

140 The total yield (ton ha⁻¹) of tomato has significantly affected by transplanting date and
141 variety. The highest yield was recorded in BARI tomato-14 (38.55 ton ha⁻¹), followed by
142 BARI tomato-3 (38.16 ton ha⁻¹), while the lowest yield was observed in variety Riograndi
143 (9.17 ton ha⁻¹) at transplanting date 18th December. In 18th January transplanting, the
144 highest yield was recorded in BARI tomato-15 (12.10 ton ha⁻¹), while the lowest total yield
145 was observed in local variety Khattabegun (6.25 ton ha⁻¹) (Table 2).

146

147

3.2 Effect of transplanting dates and varieties on diseases and pest infestation

148 Levels of infections due to bacterial wilt disease did not significantly vary with transplanting
149 date and variety. Level of bacterial wilt disease infection was 6.9% and 5.48% in Riograndi
150 variety, whereas the Khattabegun variety was infected by 1.34% and 1.12% in 18th
151 December and 18th January transplanting, respectively (Table 3). Early blight infestations
152 were significantly influenced by transplanting date and variety. In 18th December
153 transplanting, Roma VF had the highest infestation (2.41%) by early blight and the lowest
154 infestation was observed in BARI tomato-3, BARI tomato-15, Marglobe, and
155 Khattabegun with the value of (0.71%). Riograndi had the maximum infestation by early
156 blight (4.13%), while the minimum infestation was reported in BARI tomato-3, BARI tomato-
157 15, and Khattabegun (0.71%) in 18th January transplanting (Table 3).

158

159

160

161

162

163

164

165

166

167

168

169

Table 3. Effect of transplanting date and variety on the infestation of bacterial wilt, early blight, fruit borer, and tomato leaf curl virus.

Varieties	Bacterial wilt (%)		Early blight (%)		Fruit borer (%)		Tomato leaf curl virus (%)	
	18 th Dec.	18 th Jan.	18 th Dec.	18 th Jan.	18 th Dec.	18 th Jan.	18 th Dec.	18 th Jan.
BARI tomato 2	4.20 (19.8)	1.76 (3.3)	1.53 (2.2)	1.12 (1.1)	2.15 (5.3)	1.39 (1.7)	2.71 (7.3)	1.12 (1.1)
BARI tomato 3	1.6 (4.2)	1.68 (4.3)	0.71 (0.0)	0.71 (0.0)	1.86 (3.0)	2.23 (4.8)	1.75 (3.2)	0.71 (0.0)
BARI tomato 14	2.51	2.00	1.35	1.35	1.94	1.86	1.12	0.71

	(7.5)	(4.3)	(2.2)	(2.2)	(4.0)	(3.7)	(1.1)	(0.0)
BARI tomato 15	3.71	2.00	0.71	0.71	1.39	1.18	1.12	1.53
	(13.5)	(4.3)	(0.0)	(0.0)	(1.7)	(1.3)	(1.1)	(2.2)
Marglobe	5.44	4.80	0.71	2.30	1.48	1.10	3.27	2.64
	(31.1)	(23.9)	(0.0)	(6.3)	(2.0)	(1.0)	(10.4)	(8.3)
Roma VF	4.83	5.47	2.41	3.61	1.25	1.48	1.34	1.67
	(22.9)	(31.2)	(5.4)	(12.5)	(1.7)	(2.0)	(6.3)	(6.3)
Riograndi	6.9	5.48	1.53	4.13	1.71	1.93	1.97	2.89
	(47.8)	(31.3)	(2.6)	(16.7)	(3.0)	(3.3)	(6.3)	(15.5)
Khattabegun	1.34	1.12	0.71	0.71	0.71	0.71	1.51	2.90
	(2.1)	(1.08)	(0.0)	(0.0)	(0.0)	(0.0)	(3.1)	(10.4)
LSD ($p \leq 0.05$)	V=1.62		V=0.68		V=NS		V=1.30	
	SD=0.85		SD=NS		SD=NS		SD=NS	
	V x SD=NS		V x SD=0.96		V x SD=NS		V x SD=NS	

170

171

172

173

174

175

176

177

178

179

180

181

182

183

184

185

There were no significant differences in number of fruits infected by fruit borer and tomato leaf curl virus between transplanting date and variety (Table 3). The percent of infected fruits by fruit borer was the highest in BARI tomato-2 (2.15%) and the lowest in Khattabegun (0.71%) in 18th December transplanting. In 18th January transplanting, the highest percentage of fruits damaged by fruit borer observed in BARI tomato-3 (2.23%), the lowest was in Khattabegun (0.71%). The highest tomato leaf curl virus infested plant was recorded in variety Marglobe (3.27%), while the lowest in BARI tomato-14 and BARI tomato-15 (1.12%) in 18th December transplanting but in 18th January transplanting, the maximum infestation was recorded in Khattabegun (2.90%), whereas the minimum infestation was observed in BARI tomato-3 and BARI tomato-14 (0.71) (Table 3).

4. DISCUSSION

186

187

188

189

190

191

192

193

194

195

196

197

198

199

200

201

202

203

204

205

206

207

Transplanting date and variety had significantly impact on the vegetative growth, yield and yield components of tomato. Transplanting dates influenced plant height, fruit yield, total yield, diseases, and pest infestation [20,21]. Tomato growth and yield were influenced by environmental conditions (humidity, soil moisture) and plant genetic materials as reported by [22]. Hilborn *et al.* [23] reported that heat stress significantly affects the yield and fruit quality of tomato. The plant height of tomato affected by seedling transplanting dates and genotypes [11,21]. The maximum plant height was observed after first transplanting that was done in 18th December in all studied varieties. The impact of transplanting date on environmental temperature is mostly shown in plant height [17]. The plant height of tomato decreased after late transplanting owing to environmental conditions. The environment controls the fruit yield per plant [17]. Tomato transplanted on 18th January had the lowest number of fruits and yield per plant, while the highest yield was achieved by transplanting tomato in 18th December which is lined with earlier studies result [17,24]. The early transplantation (18th December) shows positive effect for all yield-related characters compared to the late transplantation (18th January) which is agreed with the findings of [21,25].

The fruit set, fruit size, and ripening of tomato affected by temperature [26]. Fruit set percentage and fruit weight per plant declined when the daily mean temperature was 29°C, compared to 25 °C [27]. The decline in production is mainly due to the decrease in pollen viability and poor pollen development [28]. According to the present study findings, transplanting in 18th December led to more blossoms and fruit compared to 18th January transplanting. This result is consistent with the findings of Ahammad *et al.* [29].

208 **Transplanting date** manipulation affects the diversity and abundance of different insect
209 pests; therefore, it is considered as one of the crucial factors for reducing the infestation by
210 insect pests to get optimum yield in tomato [20,30].
211 In the present study it was observed **that** infestation **caused by** bacterial wilt, early blight,
212 fruit borer, and **tomato leaf curl virus** were **reported higher** on tomato transplanted in 18th
213 December than **those transplanted in 18th January** particularly in BARI tomato-2, BARI
214 tomato-14, and BARI tomato-15. The **highest infestations caused** by bacterial wilt, early
215 blight, and fruit borer **were observed** in tomato transplanted in 18th January compared to
216 **those transplanted in 18th December**. Tomato leaf curl virus infection was **higher** in BARI
217 tomato-3 at transplanting date 18th December compared to transplanting date 18th January,
218 while Roma VF was not infected by **tomato leaf curl virus**. In 18th December transplanting,
219 **variety Marglobe** showed more susceptibility to early blight, fruit borer, and **tomato leaf curl**
220 **virus** compared to 18th January transplanting, while, bacterial wilt infestation **showed**
221 opposite trend. The infestation by early blight, fruit borer, and tomato leaf curl virus was
222 high **at transplanting date 18th January** compared to **transplanting in 18th December** in
223 Variety Riograndi but bacterial wilt infestation was high in 18th December **transplanting**
224 **than 18th January transplanting**. Moreover, Khattabegun variety showed high infestation by
225 bacterial wilt **transplanted in 18th December** compared to 18th January **transplanting** and
226 **tomato leaf curl virus** infestation showed opposite trend. However, most of the varieties
227 **were more susceptible to** bacterial wilt, early blight, fruit borer, and **tomato leaf curl virus**
228 **when transplanted in 18th December** compared to 18th January. A study conducted by
229 Afreen *et al.* [20], they observed that **transplanting tomato in 10th December** was effective in
230 **controlling insect pest' infestation and increasing fruit yield**. Waluniba and Ao [31] also
231 reported that tomato transplanted in 4th December was highly infested by aphids and
232 **whiteflies**, while those transplanted in 19th December were more prone to leaf miner and
233 tomato fruit borer attacks.
234
235

236

5. CONCLUSION

237

238 The **vegetative growth, yield,** and yield components of tomato was significantly affected by
239 **transplanting dates** and varieties. **Transplanting tomato in 18th December** using BARI
240 tomato-14 and BARI tomato-3 varieties lead to optimum fruit yield with less disease and
241 pest infestations. Moreover, BARI tomato-2 could be cultivated in January to get earlier
242 **yield as it requires short period of date for flowering (25 days after transplanting)**. However,
243 Khattabegun (local variety) showed high **tolerance to** bacterial wilt, early blight, and
244 **tomato leaf curl virus** which may be used as breeding materials for **the development of** biotic
245 stress tolerance **variety of** tomato.
246

247

ACKNOWLEDGEMENTS

248

249 The authors are thankful to the Regional Agricultural Research Station (RARS), **Bangladesh**
250 **Agricultural Research Institute (BARI)**, Hathazari, Chattogram for **the financial and technical**
251 support to conduct the field experiment.
252

253

254

COMPETING INTERESTS

255

256 Authors have declared that no competing interests exist.
257

258

259

AUTHORS' CONTRIBUTIONS

260

261 This study was carried out in collaboration among all authors. All authors read and approved
262 the final manuscript.
263
264

265 REFERENCES

- 266
- 267 1. FAOSTAT (2022). FAOSTAT statistical database. Available from:
268 <http://www.fao.org/faostat/en/#data/QC/visualize>. Accessed 17 May 2022.
 - 269 2. Vats S, Bansal R, Rana N, Kumawat S, Bhatt V, Jadhav P, et al. Unexplored nutritive
270 potential of tomato to combat global malnutrition. *Critical Reviews in Food Science and*
271 *Nutrition*.2022;62(4):1003-1034. DOI:10.1080/10408398.2020.1832954.
 - 272 3. Alam MS, Huda MN, Rahman MS, Azad AKM, Rahman MM, Molla MM. Character
273 association and path analysis of tomato (*Solanumlycopersicum* L.). *Journal of*
274 *Bioscience and Agriculture Research*. 2019;22(1):1815-1822.DOI:
275 10.18801/jbar.220119.223.
 - 276 4. Asiry KA, Huda MN, Mousa MAA. Abundance and Population Dynamics of the Key
277 Insect Pests and Agronomic Traits of Tomato (*Solanumlycopersicon* L.) Varieties under
278 Different Planting Densities as a Sustainable Pest Control Method.
279 *Horticulturae*.2022;8(10):976. DOI:10.3390/horticulturae8100976.
 - 280 5. Hossain MG, Ali MA, Ripa RA, Ayrin S, Mahmood S. Influence of Rootstocks on Yieldand
281 Quality of Summer Tomato cv. 'BARI Tomato-4'.*Earth Systems and*
282 *Environment*.2019;3(2):289- 300. DOI:10.1007/s41748-019-00101-4.
 - 283 6. Huda MN, Hossain S, Jahan T, Ali MA, Hossain MG. Effect of planting density on
284 growth, development and yield of Tomato (*Solanumlycopersicum* L.).*International*
285 *Journal of Biosciences (IJB)*. 2022;21(3):209-214. DOI:10.12692/ijb/21.3.209-214.
 - 286 7. Sommer A, Vyas KS. A global clinical view on vitamin A and carotenoids. *The American*
287 *journal of Clinical Nutrition*. 2012; 96(5):1204S-1206S. DOI:10.3945/ajcn.112.034868.
 - 288 8. Tomlinson ML, Butelli E, Martin C, Carding SR. Flavonoids from engineered tomatoes
289 inhibit gut barriers pro-inflammatory cytokines and chemokines, via SAPK/JNK and p38
290 MAPK pathways. *Frontiers in Nutrition*.2017;4:61. DOI:10.3389/fnut.2017.00061.
 - 291 9. Young AJ, Lowe GL. Carotenoids—Antioxidant Properties. *Antioxidants*.2018;7(2):28.
292 DOI:10.3390/antiox7020028.
 - 293 10. Jankauskienė J, Brazaitytė A, Bobinas Y, Duchovskis P. Effect of transplant growth
294 stage on tomato productivity. *ActaScientiarumPolonorumHortorumCultus*.
295 2013;12(2):143-152.
 - 296 11. Rahman J, Riad MI, Begum AA. Effect of planting time and variety on the growth and
297 yield of tomato. *Tropical Agroecosystems (TAEC)*.2020;1(2):67-69.
298 DOI:10.26480/taec.02.2020.67.69.
 - 299 12. Islam MT. Effect of temperature on photosynthesis, yield attributes and yield of tomato
300 genotypes. *International journal of experimental agriculture*.2011;2(1):8-11.
 - 301 13. Sourı MK, Dehnavard S. Tomato plant growth, leaf nutrient concentrations and fruit
302 quality under nitrogen foliar applications. *Advances in Horticultural*
303 *Science*.2018;32(1):41-47.
 - 304 14. Erba D, Casiraghi MC, Ribas A, Caceres R, Marfa O, Castellari M. Nutritional value of
305 tomatoes (*Solanumlycopersicum* L.) grown in greenhouse by different agronomic
306 techniques. *Journal of Food Composition and Analysis*. 2013;31(2):245-251. DOI:
307 10.1016/j.jfca.2013.05.014.
 - 308 15. Tomar S, Dubey AK, Chaudhary M, Singh JP, Jeevan R. Effect of Different Dates of
309 Transplanting and Mulching on Flowering and Fruiting Behaviour of Tomato
310 (*Lycopersicon esculentum* Mill.). *International Journal of Pure & Applied Bioscience*.
311 2018;6(3):676-680.

- 312 16. Biswas A, Arafat Y, Islam MS, Dey S, Sarker S. Growth and yield performances of
313 tomato genotypes during winter season at eastern surmakushiyara floodplain of
314 Bangladesh. *Journal of Sylhet Agricultural University*. 2017;4(1):77-85.
- 315 17. Islam S, Islam MM, Siddik MA, Afsana N, Rabin MH, Hossain MD, et al. Variation in
316 Growth and Yield of Tomato at Different Transplanting Time. *International Journal of*
317 *Scientific and Research Publications*.2017;7(2):142-145.
- 318 18. Ahmmed S, Jahiruddin M, Razia S, Begum RA, Biswas JC, Rahman ASMM, et al.
319 Fertilizer Recommendation Guide- 2018. *Bangladesh Agricultural Research Council*
320 (BARC), Farmgate, Dhaka-1215. 2018;223.
- 321 19. International Rice Research Institute (IRRI), "CropStat for Windows 7.2," Dapo, Metro
322 Manila, 2007.
- 323 20. Afreen S, Rahman MM, Islam MMU, Hasan M, Islam AKMS. Management of insect
324 pests in tomato (*Solanumlycopersicum* L.) under different planting dates and mechanical
325 support. *Journal of Science, Technology and Environment Informatics*. 2017;5(1):336-
326 346. DOI:10.18801/jstei.050117.36.
- 327 21. Shreejana KC. Effect of transplanting dates on yield attributing characters of tomato
328 (*Lycopersicon esculentum* Mill.) variety. *Archives of Agriculture and Environmental*
329 *Science*. 2021;6(4):453-458. <https://dx.doi.org/10.26832/24566632.2021.060406>.
- 330 22. Souri MK, Sooraki YF. Benefits of organic fertilizers spray on growth quality of chili
331 pepper seedlings under cool temperature. *Journal of Plant Nutrition*. 2019;42(6):650-
332 656.
- 333 23. Hilborn S, Petersen M, Pratt RC. Late summer organic tomato production with heat
334 tolerant tomato cultivars. *Australian Journal of Crop Science*. 2021;15(03):401-408. DOI:
335 10.21475/ajcs.21.15.03.p2892.
- 336 24. Ahammad KU, Siddiky M, Ali Z, Ahmed R. Effects of Planting Time on the Growth and
337 Yield of Tomato Varieties in Late Season. *Progressive Agriculture*. 2013;20(1-2):73-78.
- 338 25. Hossain MF, AraN, Islam MR, Hossain J, Akhter B. Effect of different sowing dates on
339 yield of tomato genotypes. *International Journal of Agricultural Research, Innovation and*
340 *Technology*. 2014;4(1):40-43.
- 341 26. Gong T, Brecht JK, Hutton SF, Koch KE, Zhao X. Tomato fruit quality is more strongly
342 affected by scion type and planting season than by rootstock type. *Frontiers in Plant*
343 *Science*. 2022;3:948556. DOI:10.3389/fpls.2022.948556.
- 344 27. Harel D, Fadida H, Slepoy A, Gantz S, Shilo K. The Effect of Mean Daily Temperature
345 and Relative Humidity on Pollen, Fruit Set and Yield of Tomato Grown in Commercial
346 Protected Cultivation. *Agronomy*. 2014;4:167-177.
- 347 28. Yu J, Jiang M, Guo C. Crop Pollen Development under Drought: From the Phenotype to
348 the Mechanism. *International Journal of Molecular Sciences*.2019;20(7):1550. DOI:
349 10.3390/ijms20071550.
- 350 29. Ahammad KU, Siddiky MA, Ali Z, Ahmed R. Effects of planting time on the growth and
351 yield of tomato varieties in late season. *Progressive Agriculture*.2009;20(1 & 2):73 – 78.
- 352 30. Huda MN, Jahan T, Taj HFE, Asiry KAA. A Newly Emerged Pest of Tomato [Tomato Leaf
353 Miner, *Tuta absoluta* Meyrick (Lepidoptera: Gelechiidae)]: In Bangladesh -A Review on Its
354 Problems and Management Strategies. *Journal of Agriculture and Ecology Research*
355 *International*. 2020;21(3):1-16. DOI:10.9734/JAERI/2020/v21i330132.
- 356 31. Waluniba, Ao MA. Seasonal Incidence of Insect-pests in Tomato
357 (*Lycopersiconesculantum* M.) on Different Planting Dates and its Correlation with Abiotic
358 Factors. *International Journal of Bio-resource and Stress Management*. 2014;5(2):280-
359 284. DOI:10.5958/0976-4038.2014.00568.5.
- 360