

Assessing the Median Serum Placental Growth Factor (PIGF) Levels in the First Trimester of Pregnancy regarding gestational age and maternal influencing factors from a prospective observational trial

ABSTRACT

Objective: To investigate the association of risk factors, including ethnicity, maternal weight, smoking status, and assisted reproduction technology, with serum placental growth factor (PIGF) levels in the early first trimester of pregnancy.

Methods: This was a multicenter observational study involving pregnant females in the first trimester between 11+0 and 13+6 weeks of gestation. Serum PIGF concentrations were analyzed in relation to ethnicity, maternal weight, smoking status, and conception through assisted reproduction technology.

Results: A total of 376 patients were included in the study and had their serum PIGF levels measured. The results showed that the serum PIGF level was 4.3% higher in the Caucasian group compared to the non-Caucasian group. Smokers had 1.78 times higher levels of serum PIGF compared to non-smokers. Assisted reproduction technology was associated with lower levels of serum PIGF compared to spontaneous pregnancies. There was a negative correlation between serum PIGF levels and maternal weight, but it was statistically insignificant.

Conclusion: Maternal weight was negatively correlated with serum PIGF levels, even though this association was statistically not significant. High serum PIGF levels were observed in smokers and in non-Caucasians. Further research is needed to establish a concrete analysis of these findings.

Keywords: Maternal impact factors; Serum placental growth factor (PIGF); Median values

Introduction

Currently, pre-eclampsia (PE) is a significant risk factor during pregnancy, with an occurrence rate of 3-5% [1-8] and is associated with increased morbidity, including low birth weight [2,10], and HELLP syndrome [11,12], as well as mortality [1-5,9]. PE is a pregnancy-related hypertensive disorder that can occur during the second half of pregnancy and is characterized by high blood pressure and proteinuria [2,10]. It is divided into an early-onset and late-onset form, occurring between 20-34 weeks and after 34 weeks of pregnancy, respectively [3,9]. PE is defined as a systolic blood pressure ≥ 140 mmHg or diastolic blood pressure ≥ 90 mmHg [2,10] which firstly occurs after week 20 of pregnancy and is accompanied by proteinuria protein $\geq 3g / 24$ hours [2,10].

There are several known risks factors for PE [1,2,7], including antiphospholipid-syndrome (relative risk 9.72), diabetes mellitus (relative risk 3.56), twin pregnancy (relative risk 2.93), nulliparity (relative risk 2.91), positive family history (relative risk 2.90), high BMI (relative risk 2.47), advanced maternal age (relative risk 1.96) and a history of PE in previous pregnancies (relative risk 7.19) [15].

Several markers have been proposed as potential predictors of PE. The most commonly used is Doppler sonography of the uterine artery [1,16,17], but biochemical parameters such as free beta hCG, PAPP-A, PP-13, sFlt-1, P-selectin, NGAL, and Placenta Growth Factor (PIGF) have also been studied [1,2,12,18-20]. Out of these laboratory parameters, PIGF has shown most promising as a predictor of PE, particularly when used in combination with sFlt-1 in the second trimester [21,22], or as a single parameter in the first trimester of pregnancy [1-3].

PIGF is a member of the vascular endothelial factor family and is produced by the trophoblast cells in the placenta [1]. In normal pregnancies, PIGF concentration increases throughout pregnancy [1,2] and is influenced by a number of maternal factors, such as age, body weight, assisted reproduction technology (ART), racial origin, cigarette smoking, caffeine intake [1,2,6], or diabetes mellitus Type 1 and Type 2 [2]. However, in cases of pathological conditions such as fetal aneuploidy and/or impaired placentation, PIGF

concentrations may be reduced, leading to increased risk of PE, HELLP syndrome, or small for gestational age (SGA) [2,12]. Conversely, higher levels of PIGF are associated with reduced risk of PE and SGA [10,23].

Aim:

The Brahms/Kryptor is a novel analysis technique that allows for the measurement of PIGF serum concentration in the first trimester, between 11+0 and 13+6 weeks of pregnancy. In order to establish a screening test for PE based on very early PIGF serum concentration, it is necessary to compare measured concentrations to standard values. However, currently, only unpublished data are available in this regard. The aim of this study is to determine the median PIGF serum concentration values according to pregnancy age between 11+0 and 13+6 weeks and to examine the influence of various factors on these values.

Material and Methods:

This is a prospective multicenter observational study of pregnant women in the first trimester, conducted at two clinics in Germany: Women's Practice Bahnhofstrasse in Wolfenbüttel and MVZ Dr. Markus Luetge in Salzgitter. The study took place between September 2018 and December 2020 and is registered in the German Clinical Trials Registry (DRKS00014630).

Approval from local ethics boards were obtained and all enrolled patients provided written informed consent. The study population consisted of pregnant women who visited these clinics for routine monitoring and were between 11+0 to 13+6 weeks of pregnancy. Blood samples were taken once per patient to retrieve the PIGF serum concentration.

Patients with pre-existing hypertension, those taking acetylsalicylic acid, or those pregnant with multiple births were excluded from participation.

Patients who did not meet the required time window in pregnancy, had miscarriages, or had incomplete data sets were also excluded from analysis.

In total, 432 cases were recruited for this prospective study. After excluding cases with missing data, such as those with missing smoking status (n=1), no status on ART (n=3), no maternal weight status (n=6), no PIGF status (n=13), missing pregnancy week (n=1), no

delivery weight status, or those who had an abortion or miscarriage (n=32), 376 cases remained for further analysis.

The study population's serum PIGF values were analyzed according to maternal weight, smoking status (yes or no), method of conception (spontaneous /assisted reproduction) and ethnic origin (Caucasian, Afro-Caribbean, Asian and Oriental).

Age depending median values were computed using various computed regression analysis methods, including linear, exponential, logarithmic, polynomial, potential, and hyperbolic regression analysis, with the use of the the Regression App for Mac (by Kevin Silmore v1.1) and OpenOffice software package (The Apache Software Foundation, v4.1.9).

To compare the measured PIGF values in relation to unpublished data from the test kit manufacturer (Brahms/Kryptor, Thermo-Fisher Scientific, Heringsdorf, Germany), a Student's t-test for connected samples was performed using JASP, (JASP team, Amsterdam, v0.8.1.1).

Additionally, the PIGF concentrations were transformed from raw data to multiples of median (MoM) according to the previously calculated gestational age-dependent reference values.

The PIGF-MoMs were compared between different ethnic origins (Caucasian vs. Oriental, Caucasian vs. Asian, Caucasian vs. Afro-Caribbean), smokers vs. non-smokers, and assisted reproduction technique (ART) vs. non-ART. After confirming the existence of a normal distribution using the Kolmogorov-Smirnov test, consistency among samples was checked using the Student's t-test for unconnected samples (WinSTAT, R. Fitch Software, v 2005.1). Statistical significance was assumed for a p-value <0.05.

As maternal weight is a metric scale factor, the correlation between maternal weight and PIGF concentration was analyzed using the Pearson correlation coefficient and a regression analysis (WinSTAT, R. Fitch Software, v 2005.1) after normal distribution was demonstrated again by the Kolmogorov-Smirnov test.

Results:

When comparing our data to the values considered as normal and provided by the manufacturer, we found a significant correlation between the data sets, with $p < 0.001$.

The mean PIGF serum concentration in correlation to pregnancy age was given as $f(x) = (9.3328019641 \cdot X) - 77.6187630387$ ($R^2 = 0.1265$, refer to figure 1). The numeric median values according to gestational age are listed in table 1. Other regression analyses using logarithmic ($R^2 = 0.1246$), exponential ($R^2 = 0.1238$), logarithmic ($R^2 = 0.1240$), power ($R^2 = 0.1221$), and hyperbolic ($R^2 = 0.1221$) regression yielded in worse R-values or were not computable (potential, different types of hyperbolic regression).

In our study group 26 cases belonged to the Oriental ethnic origin, 3 cases to the Asian ethnic origin, and 3 cases to the Afro-Caribbean ethnic origin. We observed that in the Oriental population, the serum PIGF was 4.34% higher ($p = 0.63$) and in the Asian group, the serum PIGF values were 29.91% higher than in the Caucasians. Afro-Caribbean women had 26.01% higher PIGF levels ($p = 0.32$) compared to Caucasian women.

Sixteen cases were smokers, who had 1.78-fold higher levels of PIGF ($p = 0.0003$).

Thirteen cases had ART. No differences could be detected between both groups.

The weight range of the study population was between 52.3 kg and 118 kg, with an average weight of 74.6 kg. We found a small but measurable impact of maternal weight on PIGF levels, as demonstrated by a Pearson correlation of $r = -0.01$ ($R^2 = 0.0009$) for the regression formula $f(x) = x / (6.908462154 + 0.979081743 \cdot x)$.

The correction factors are listed in table 2 and 3.

Discussion:

Our values were consistent with those of the test kit manufacturer.

We also observed an linear increase in serum PIGF levels with advancing gestational age between 11+0 and 13+6 weeks, which is in line with published data [1,2].

Kasdaglis et al. did not find a significant correlation between serum PIGF values and ethnical origin [1], unlike previous studies, that have shown higher levels in certain ethnic groups [2].

In our study population, subjects of African-Caribbean, Asian, and Oriental origin made up 8.8% of the total study population and had higher PIGF levels, similar to the findings of Tsiakkas et al [2]. Furthermore, we found that non-Caucasian ethnic groups had higher

levels of PIGF than Caucasians; however, these results were not statistically significant due to the small sample size.

Additionally, we found that smokers had a 1.78-fold higher PIGF serum concentration compared to non-smokers, in line with previous studies [2,6,24].

We also found that assisted reproduction had no statistically significant impact on PIGF values similar to the findings of Coté [18].

Furthermore, we found a slightly negative correlation between BMI and PIGF levels, in line with previous studies [1,2,7].

Conclusion: Overall, our study found that several factors, including ethnic origin, nicotine consumption, and maternal weight were related to PIGF levels, but the results were mostly not significant due to small sample sizes in these subgroups.

Consent

As per international standard or university standard, patient(s) written consent has been collected and preserved by the author(s).

Ethical Approval:

As per international standard or university standard written ethical approval has been collected and preserved by the author(s).

References

[1] Kasdaglis T, Aberdeen G, Turan O, Kopelman J, Atlas R, Jenkins C et al.: Placental growth factor in the first trimester:relationship with maternal factors and placental Doppler studies. *Ultrasound Obstet Gynecol* 2010; 35: 280-85

[2] Tsiakkas A, Duvdevani N, Wright A, Wright D, Nicolaides KH:Serum placental growth factor in the three trimesters of pregnancy:effects of maternal characteristics and medical history.*Ultrasound Obstet Gynecol* 2015; 45: 591-8

- [3] Akolekar R, Zaragoza E, Poon LCY, Pepes S, Nicolaides KH: Maternal serum placental growth factor at 11+0 to 13+6 weeks of gestation in the prediction of pre-eclampsia. *Ultrasound Obstet Gynecol.* 2008 Nov; 32(6): 732-9
- [4] Sibai B, Dekker G, Kupferminc M: Pre-eclampsia. *Lancet* 2005 Feb 26-Mar 4; 365(9461): 785-99
- [5] Steegers EAP, Von Dadelszen P, Duvekot JJ, Pijnenborg R: Pre-eclampsia. *Lancet* 2010 Aug 21; 376 (9741): 631-44
- [6] Shinjo A, Ventura W, Koide K, Hori K, Yotsumoto J, Matsuoka R, et al.: Maternal Smoking and Placental Expression of a Panel of Genes Related to Angiogenesis and Oxidative Stress in Early Pregnancy. *Fetal Diagn Ther* 2014; 35: 289-295
- [7] Hutcheon JA, Lisonkova S, Joseph KS: Epidemiology of pre-eclampsia and the other hypertensive disorders of pregnancy. *Best Pract Res Clin Obstet Gynaecol.* 2011 Aug; 25(4): 391-403
- [8] Lisonkova S, Joseph KS: Incidence of preeclampsia: risk factors and outcomes associated with early-versus late-onset disease. *Am J Obstet Gynecol.* 2013 Dec; 209 (6): 544.e1-544.e.12
- [9] Raymond D, Peterson E: A critical review of early-onset and late-onset preeclampsia. *Obstet Gynecol Surv.* 2011 Aug; 66(8): 497-506.
- [10] Ong CY, Liao AW, Cacho AM, Spencer K, Nicolaides KH: First-trimester maternal serum levels of placenta growth factor as predictor of preeclampsia and fetal growth restriction. *Obstet Gynecol.* 2001 Oct; 98(4): 608-11
- [11] Abildgaard U, Heimdal K: Pathogenesis of the syndrome of hemolysis, elevated liver enzymes, and low platelet count (HELLP): a review. *Eur J Obstet Gynecol Reprod Biol.* 2013 Feb; 166(2): 117-23
- [12] Cowans NJ, Stamatopoulou A, Matwejew E, von Kaisenberg CS, Spencer K: First-trimester placental growth factor as a marker for hypertensive disorders and SGA. *Prenat Diagn.* 2010 Jun; 30(6): 565-70

- [13] Duckitt K, Harrington D: Risk factors for pre-eclampsia at antenatal booking: systemic review of controlled studies. *BMJ* 2005 Mar 12; 330(7491) 565
- [14] Napolitano R, Rajakulasingam R, Memmo A, Bhide A, Thilaganathan B: Uterine artery Doppler screening for pre-eclampsia: comparison of the lower, mean and higher first-trimester pulsatility indices. *Ultrasound Obstet Gynecol.* 2011 May; 37(5): 534-7
- [15] Oancea M, Grigore M, Ciotea R, Diculescu D, Bodean D, Bucuri C, et al.: Uterine artery doppler ultrasonography for first trimester prediction of preeclampsia in individuals at risk from low-resource settings. *Medicina (Kaunas)* 2020 Aug 26;56(9):428
- [16] Cotè A, Maheux-Lacroix S, Sabr Y, Gasse C, Bujold E, Boutin A: Association between fertility treatments and early placentation markers. *Placenta.* 2019 Jul; 82: 35-41
- [17] Di Lorenzo G, Ceccarello M, Cecotti V, Ronfani L, Monasta L, Vecci Brumatti L, et al.: First trimester maternal serum PIGF, free beta-hCG, PAPP-A, PP-13, uterine artery doppler and maternal history for the prediction of preeclampsia. *Placenta* 2012 Jun; 33(6): 495-501
- [18] Youssef A, Righetti F, Morano D, Rizzo N, Farina A: Uterine artery doppler and biochemical markers (PAPP-A, PIGF, sFlt-1, P-selectin ,NGAL) at 11 plus 0 to 13 plus 6 weeks in the prediction of late (>34 weeks) pre-eclampsia. *Prenat Diagn.* 2011 Dec; 31(12): 1141-6
- [19] Gomez-Arriaga PI, Herraiz I, López-Jiménez EA, Gómez-Montes E, Denk B, Galindo A: Uterine artery doppler and sFlt-1/PIGF ratio: usefulness in diagnosis of pre-eclampsia. *Ultrasound Obstet Gynecol.* 2013 May; 41(5): 530-7
- [20] Lehnen H, Mosblech N, Reineke T, Puchooa A, Menke-Möllers I, Zechner U, et al.: Prenatal clinical assessment of sFlt-1(Soluble fms-like Tyrosine Kinase-1)/PIGF (Placental growth factor) ratio as a diagnostic tool for preeclampsia, pregnancy-induced Hypertension, and Proteinuria. *Geburtshilfe Frauenheilkd.* 2013 May; 73(5): 440-445
- [21] Gasiorowska A, Pietryga M, Zawiejska A, Dydowicz P, Ziolkowska K, Wolski H, et al.: Chorionic thickness and PIGF concentrations as early predictors of small-for-gestational age birth weight in a low risk population. *Ginekol Pol* 2017; 88(2): 87-95

[22] Llurba E, Sanchez O, Dominguez C, Soro G, Goya M, Alijotas-Reig J, et al.: Smoking during pregnancy: changes in mid-gestation angiogenic factors in women at risk of developing preeclampsia according to uterine artery Doppler findings. *Hypertens Pregnancy* 2013; 32(1): 50-

9

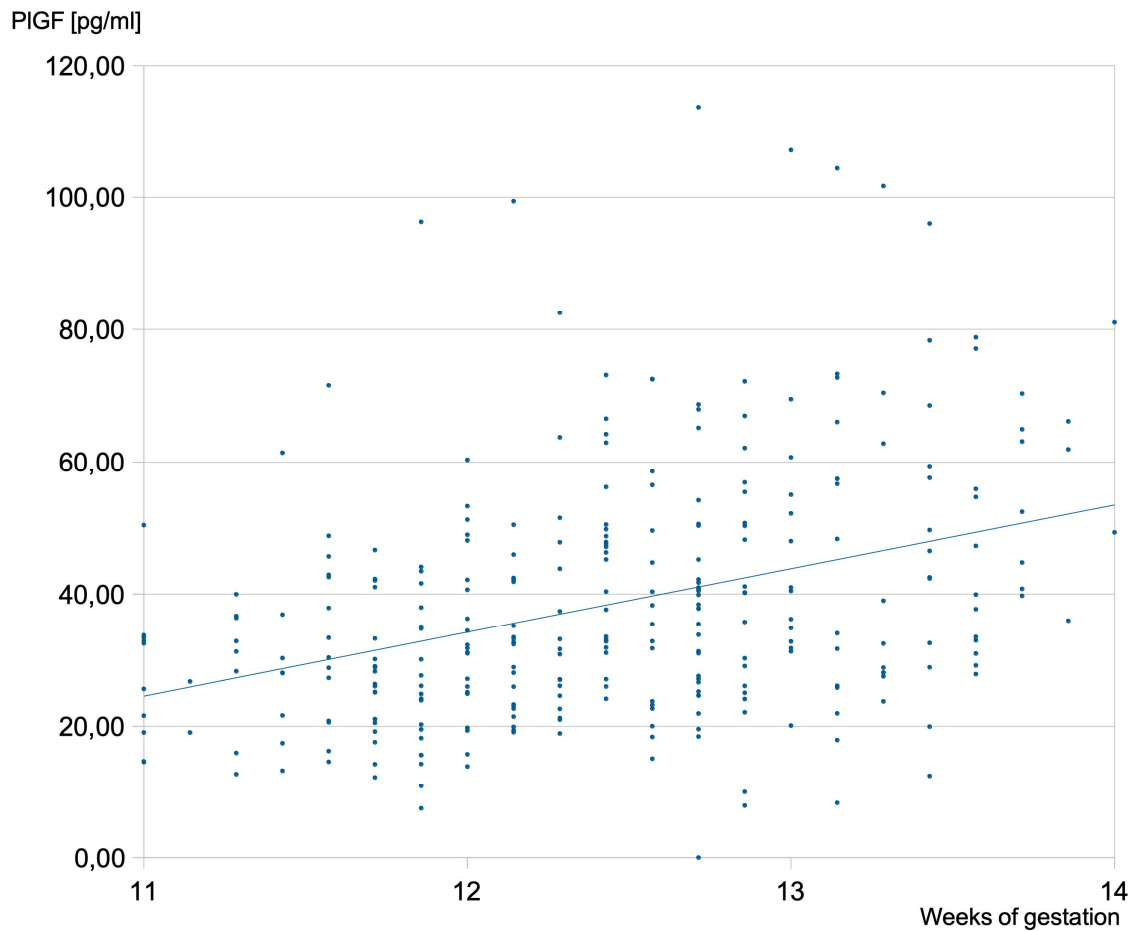


Figure 1: PIGF levels in ng/dl according to maternal gestational age in weeks, compared with median values from Brams/Kryptor.

Table 1: Median PIGF value in pg/ml depending on the week of pregnancy. Double standard deviation in brackets.

Gestational age (week + day)	Median PIGF concentration [pg/ml] (-2 std. dev / +2 std. dev)

11+0	25.042 (13.825 – 36.259)
11+1	26.375 (15.158 – 37.592)
11+2	27.709 (16.492 – 38.925)
11+3	29.042 (17.825 – 40.259)
11+4	30.375 (19.158 – 41.592)
11+5	31.708 (20.492 – 42.925)
11+6	33.042 (21.825 – 44.258)
12+0	34.375 (23.158 – 45.592)
12+1	35.708 (24.491 – 46.925)
12+2	37.041 (25.825 – 48.258)
12+3	38.375 (27.158 – 49.591)
12+4	39.708 (28.491 – 50.925)
12+5	41.041 (29.824 – 52.258)
12+6	42.374 (31.158 – 53.591)
13+0	43.708 (32.491 – 54.924)
13+1	45.041 (33.824 – 56.258)
13+2	46.374 (35.157 – 57.591)
13+3	47.707 (36.491 – 58.924)
13+4	49.041 (37.824 – 60.258)
13+5	50.374 (39.157 – 61.591)
13+6	51.707 (40.490 – 62.924)

Table 2: Comparison of the PIGF **medians** regarding influencing factors with indication of the level of significance.

	Average MoM group 1	Average MoM group 2	Factor	p
Smoker/non-smoker	2.04 (n=16)	1.14 (n=398)	1.78	<0.0001
Asian/Caucasian	1.47 (n=3)	1.13 (n=350)	1.3	0.25
Oriental/ Caucasian	1.18 (n=26)	1.13 (n=350)	1.04	0.63
Afro-Caribbean/ Caucasian	1.43 (n=3)	1.13 (n=350)	1.26	0.32
ART/non-ART	0.99 (n=13)	1.18 (n=398)	0.83	0.20

Table 3: Specification of the correction factor for the maternal weight with the zero point for the correction being 74.1 kg (1.0 average correction factor).

maternal weight [kg]	regressionanalysis	correction factor
50	0.895	1.042
60	0.914	1.020
70	0.928	1.005
74.12 *	0.933	1.000
80	0.939	0.994
90	0.947	0.985
100	0.954	0.978
110	0.960	0.972
120	0.967	0.967
130	0.963	0.963