

## Evolutionary trend in *Passiflora* species revealed by RAPD-PCR, gene specific ITS and *rbcL* markers

### Abstract

#### Background:

The present study represents a preliminary analysis of genetic diversity among *Passiflora* species using amplified genotypic data of specific *ITS* and *rbcL* sequences and non-specific RAPD-PCR markers for investigation of the molecular phylogeny.

**Methods:** The PCR-RAPD uses ten primers for polymorphic DNA, which are compiled on NTSYS software to construct dendrogram. The gene specific *ITS* and *rbcL* primers are used for specific amplification from genomic. The amplified *ITS* and *rbcL* markers assembled using Maximum Parsimony (MP) and Maximum likelihood (ML) methods. The BLAST, CLUSTAL W, and MEGA 6.0 have been used to conclude final genetic relation tree.

**Results:** The PCR-RAPD primers translate 133 random amplified polymorphic DNA. NTSYS dendrogram placed *P. vitifolia* from Ramdaspath and Shankar Nagar Nagpur, India in same clade (similarity coefficient 0.609) confirming same origin Nagpur India. Moreover, *P. foetida* from England is not coming in same clade with Indian *P. foetida* showing geographically intra-specific variation. In addition, the change in a constructed tree was observed with respect to change in phylogeny methods MS/ML. The *ITS* MP consensus tree is supported by strong 100 bootstrap value, clusters *P. vitifolia* (HNI and RNI) and *P. foetida* (UAI and UGI) in equivalent clade. However, no single species have been recovered using *rbcL* in MP and ML method. Thus, it is inference that *rbcL* have tendency to differentiate *Passiflora* species not allowing clustering around same species in same clade and the *ITS* region having parsimony informative sites that provide valid resolution and identification at inter-intra species level.

**Conclusions:** The evaluation of properties of RAPD indicates 100% PCR success, sometimes with low rate of amplification. The *ITS* region found to be best for identification at inter-intra species, On the contrary, *rbcL* region is good to distinguished inter species, making it best as local DNA barcode for marking a *Passiflora* species in phylogenetic community.

**Keywords** *Passiflora* species, PCR-RAPD, *ITS4* & *rbcL* markers, NTSYS, MEGA 6.0 software, Maximum Parsimony (MP), Maximum likelihood (ML), Dendrogram and Genetic diversity.

## **Introduction**

The classification of plants allows to differentiate among, pharmaceutical important plants that are poisonous. The plant species have characteristic traits helpful for classification. In early times, diversity was purely based on the visual morphological characters (Vanderplank. 1991). Despite that, some plants have similar external features that made extremely difficult to identify which leads to wrong classification, which is solely biochemical based. Nevertheless, results produced were confusing and had errors, making it unacceptable to scientific community (Fajardo et al., 1998).

In the modern taxonomy classification molecular markers are used, which results from deletion, duplication, inversion and insertion are use for assessment of plant genetic diversity. Recently sequence-related amplified polymorphism (SRAP marker) (Oluoch et al., 2018). single-nucleotide polymorphism (SNP) markers (Rodriguez Castillo et al., 2021) are used. Phylogenetic analysis in *P. foetida* from Australia has been investigated using the chloroplast genome data (Hopley et al., 2021).The molecular marker is gene specific and non specific created library using different genes represents diversity among plants. A good review paper by Mondini *et al* (2009) and Agrawal *et al* (2008) explained them in detail. The RAPD analysis of *Passiflora* species has been successfully done by Fajardo *et al* (1998); Molinari and Crochemore (2001); Carneiro *et al* (2002); Crochemore *et al* (2003); Loss *et al* (2006); Junqueira *et al* (2007); Junqueira *et al* (2008); Fonseca *et al* (2009); Viana *et al* (2010); Castro *et al* (2011).

In animals, COI gene (DNA barcode) is conventionally used to resolve phylogenetic relation (Hollingsworth et al., 2011; Hollingsworth. 2011). Similarly, plastid (chloroplast) ribulose-1,5-bisphosphate carboxylase/oxygenase (*rbcL*) (Kress and Erickson, 2007; Kress and Eeickson, 2008; Hollingsworth et al., 2009) and mat K genes are stamped for barcode in plants (Khan et al., 2015). However, non coding ITS region i.e internal transcribe spacers of nuclear ribosomal DNA (nr DNA ITS) data compliments the core barcode data (Hollingsworth. 2011; Laiou et al., 2013) and used to study evolutionary studies to infer phylogeographic patterns in a wide range of species (Mader et al., 2009; Ramaiya et al., 2014; Cerqueira-silva et al., 2014).

Therefore, must be incorporated in barcode of plants (Li et al., 2011). The three endangered trees *Coptosperma*, *Graveolens sub sp. Arabicum (S. Moore) Degreed* has been successfully profiled using PCR-RAPD and *rbcL* gene sequences (Bafeel et al., 2012).

The molecular data matrix generated using the sequenced genes and are applied to dendrogram construction using software to develop phylogenetic tree by various tree building methods. If sequence similarity is strong, Maximum Parsimony is used: which uses a character-based data matrix (0, 1). Similarly, if sequence similarity is very weak, maximum likelihood is used. Two statistical method tests Bootstrapping (500-1000 time), and Jackknifing with branch point score is around 90%, is best predicated accurate tree analyzed by a) Kishino-Hasegawa b) Bayesian analysis c) Shimodairo- Hasegawa methods (Patwardhan et al., 2014).

Several plants species have been classified on the basis of modern taxonomy. The *Passiflora* species are valuable as ornamental plants found in the tropical and subtropical region of the globe (Souza et al., 2008). They have undergone natural hybridization to form new identities, leading to diversification with beautiful flowers which have been confusing botanists, molecular biologists and taxonomist (Fajardo et al., 1998). Their diversity is also reflected from their inherited pharmacological constituents such as alkaloids, phenols, flavonoids, iso flavonoids, glycosides, esters, volatiles, chrysoeriol, apigenin, luteolin, kaempferol, isoschaftoside, vitexin and isovitexin (Hoffmann et al., 2003). These constituents are used for one of the treatments of various human diseases such as anxiety, asthma, biliousness, sedative, cough, pain, hysteria, headache, insomnia, sexual dysfunction, skin diseases (Dhawan et al., 2002; Dhawan et al., 2004) digestive problems, including dyspepsia, expectorant nervous conditions, spasms, anti-ulcer, inflammation (Dhawan et al. 2002), cancer, diabetes mellitus and rheumatoid arthritis (Batugal et al., 2004).

In the last decade, the phylogenetic studies of *Passiflora* species have been carried out using molecular markers such as *rbcL* and *rps4* genes, the *trnL* intron and *trnL-F* intergenic spacers from the plastid genome, the *nad1* b/c and *nad5* d/e introns from the mitochondrial genome, and a portion of the *26S* gene from the nuclear ribosomal genome organized it into four subgenera: *Astrophaea*, *Decaloba*, *Deidamiodes*, and *Passiflora* (Cerqueira-silva et al., 2014). Thus in present work, by using a RAPD marker along with ITS and *rbcL*. Extensive phylogenetic study is conducted to construct evolutionary relation among *Passiflora* species originated from

India and England. The phylogenetic tree generated using RAPD data; ITS and *rbcL* sequences were compared and definite classification of *Passiflora* species is presented.

## Materials And Methods

### Reagents and chemicals

The (CTAB- cetyl-trimethyl ammonium bromide detergent), Polyvinylpyrrolidone (PVP) 40000 (1%), liquid nitrogen were used for DNA isolation. **Enzymes, Buffers and Instruments:** Dream Taq DNA polymerase, Rnase A and Protinase K (Fermentas Inc), Buffer: 10x Dream Taq Green buffer (Fermentas Inc), **Nucleotides:** dNTPs (G, A, T, C) 2 mM, Gradient thermocycler PCR, Gel electrophoresis in 1X TAE buffer at 50 V, EtBr (ethidium bromide), Gel document system (BioRad). The **RAPD primers** and **ITS** and ***rbcL* marker primer** sequence along with references are shown in table 1. **The sequencing** of *ITS* and *rbcL* primer done using ABI Big Dye Terminator V3.1 Cycle Sequencing Kit, at Bioresource Biotech Pune, Maharashtra, India.

### Plant material

The leaves of *Passiflora* species have been used for isolation of genomic DNA. The specific codes have been given to precise *Passiflora* species and their place of origin have been displayed in table 2. **Sampling source:** The sampling source from which the experimental plants have been retrieved are shown in figure 1. The maps were captured from Google mapsImagery©2015 DigitalGlobe, Getmapping plc, Infoterra Ltd & Bluesky, The Geoinformation Group, Map data ©2015 Google. The maps display distance between the sampling source UK and India. **A:** Time duration between chiltern seed Willingford UK (CWE) and Ambazari hill top Nagpur (HNI) Maharashtra India is 14 hr 15 min; chiltern seed center location in zoom mode and interval between Ambazari Hill Top (HNI) Nagpur to Ramdaspath Nagpur (RNI) is 3.7 Km (Approximate 10 min away), **B:** The gap between Sant Gadge Baba Amravati University campus (AUI) and Ambazari Hill Top (HNI) Nagpur is 150 Km and it takes approximately 2 hrs travel time. The distance between Shankar Nagar (SNI) and Ramdaspath (RNI) is 2.5 Km while, the stretch between Shankar Nagar (SNI) and Hill Top Nagpur (HNI) is 1.8 Km.

### DNA extraction

The DNA extraction is performed by improved CTAB method without using liquid nitrogen as described in our previous published work (Lade et al. 2014).

### **PCR amplification of RAPD**

The RAPD reactions were performed using 20 µl of volume containing 20ng of genomic DNA, 2 µl 10X Taq Green Buffer, 0.2 mM of dNTP mix, 0.20 mM of primers (see table 1), milli Q water 11-13.5 µl appropriately to make up volume of the reaction, with 0.5 U of Green Taq Polymerase. The gradient thermocycler PCR was programmed for initial denaturation (1) step of 95°C for 4 min followed by 40 cycles of (2) step, 1 min for 94°C, 1 min for 25°C to 43°C, 1 min for 72°C with final extension (3) step of 10 min for 72°C.

**NTSYSpc** is a Numerical Taxonomy and Multivariate Analysis System Version 2.0 software was used to construct dendrogram by molecular matrix data generated in PCR-RAPD analysis. The 12 *Passiflora* species, PCR-RAPD generated fragments used for marking the presence (1) and absence (0) of bands among all species (Jaccard 1901). These 0 and 1 were saved in excel file and used for dendrogram construction with UPGMA algorithm (Fajardo et al., 1998). Import excel file from Ntedit program using DDE option was used. Ntedit application version (2.02i) was opened, and similarity option was selected and further simqual option was carried out. Clustering was performed using SAHN and output file C is computed to generate dendrogram. The compute button takes matrix and generates a Phylogenetic tree and results saved in PDF/ other formats for interpretation of the results.

### **PCR amplification of *ITS4* and *rbcL* sequence**

The primers given in table 1 were used for PCR amplification of *ITS* and *rbcL* sequence from *Passiflora* species. The final reaction mixture have a final volume of 20 µl, containing 20 ng of genomic DNA, 2 µl 10X Taq Green Buffer, 0.2 mM of dNTP mix, 0.20 mM of *ITS/ rbcL* primers (forward and reverse) and 0.5 U Green Taq Polymerase. In gradient thermocycler PCR, the programme set as initial denaturation (1) step of 95°C for 3min followed by 30 cycles of (2)

step, 30sec for 94°C, 40sec for 55°C, 30sec for 72°C with final extension (3) step of 10 min for 72°C. The 1 µl of amplified DNA from RAPD and *ITS*, *rbcL* were checked on 1.4 % and 1.2 % agarose gel electrophoresis respectively in 1X TAE buffer at 50 V for three hours stained with 0.5 µg/ml EtBr (ethidium bromide). Finally gel electrophoresis photographed were captured by a gel document system and samples were sent for sequencing.

### **Sequencing of *ITS4* and *rbcL* DNA sequence**

In total 52 counts of PCR products were generated among them 26 *ITS* (F/R) and 26 *rbcL* (F/R) were sequenced using ABI Big Dye Terminator V3.1 Cycle Sequencing Kit. The sequence samples applied for BLAST analysis.

### **Basic Local Alignment Search Tool (BLAST)**

In BLAST search, on NCBI web site, BLAST n selected for nucleotide BLAST (search set), with file FASTA format; optimized for highly similar sequences and clicked BLAST. The several homologous sequences from NCBI database were searched and displayed as result page with the most similar for *ITS* and *rbcL* sequences at the top of the page.

### **Molecular Evolutionary Genetics Analysis software (MEGA 6.0)**

The sequenced amplified DNA from *ITS* and *rbcL* sequences were assembled for MEGA analysis. It is automatic and manual sequence alignment, building sequence alignments, inferring phylogenetic histories, and conducting evolutionary analysis. In MEGA the two methods maximum parsimony (MP) and maximum likelihood (ML) method were applied as given in figure 2 for phylogenetic tree construction.

### **Maximum parsimony (MP) method**

The MP parameters are set automatically in MEGA for *ITS* sequences, nucleotide substitution model with complete deletion of gaps, bootstrap replications set as 1000 and Tree-Bisection-Reconnection (TBR) with 10 number of initial trees, search levels was set 1 and the tree length as 338 parsimony tree 3. Furthermore, same parameters were applied to *rbcL* sequences except, the tree length was 2380, parsimony tree 1 with bootstrap greater than 40% are finalized.

### **Maximum likelihood (MP) method**

Similar to MP method, the ML method considered 1000 bootstrap of replications with deletion of gaps and missing data. The ML characteristic for *ITS* and *rbcL* sequences aligned by clustal W, pair wise and multiple sequence alignments include total 1101 sites with gaps, 781 without gaps and 520 positions respectively. These nucleotide substitution model Kimura 2-parameter was applied and final consensus tree reconstructed by heuristic method with Nearest-Neighbor-Interchange (NNI). The consensus tree, conflicting branching patterns are resolved by selecting the pattern seen in more than 50% of the trees.

### **CLUSTAL W**

All sequences of (*ITS* and *rbcL*) were considered for pair wise, multiple alignments using CLUSTAL W from MEGA software for phylogenetic tree construction to get number and sequence similarity of nucleotide selected for alignments.

### **BOLD Search**

The sequenced *rbcL* sequence were copied and pasted in a web-based site at plant identification (*rbcL* and mat K) BOLDSYSTEMS for possible identification of species.

## **Results**

### **DNA isolation**

The isolated DNA from all the mention species of *Passiflora* produced 168.2 to 1782.5 µg/ml DNA from 0.5 g of leaf samples; A 260/280 = 1.80 ± 22 and A 260/ 230 = 1.75 ± 20. The optimization of RAPD-PCR protocol and parameters for amplification of genomic DNA fragments are discussed in Lade et al (2014).

### **Evaluation of RAPD marker**

The figure 3 shows the DNA fingerprinting profile for RAPD-PCR primers (P1-P10). The primer 1-10 turned out to be a good polymorphic marker by producing 133 polymorphic 10-17 bands.

### **Tree description based on matrix data of RAPD**

The constructed phenogram using NTSYSpc software is shown in figure 4, which consists of two clusters, cluster I and cluster II. Cluster-I consist of two sub clades, which included *P. incarnata* UAI, *P. vitifolia* HNI in 1<sup>st</sup> clade and *P. foetida* CWE, *P. Lady Margaret* HNI, *P. vitifolia* RNI, *P. vitifolia* SNI, *P. incarnata* SNI in 2<sup>nd</sup> clade. while, cluster II consist of one clade which contented *P. foetida* UAI, *P. foetida* HNI, *P. caurelia* CWE, *P. incarnate* RNI, and *P. incarnata* CWE. The dendrogram confirms high levels of variation within and among *Passiflora* species. A dendrogram placed *P. vitifolia* from Ramdaspath Nagpur, India and *P. vitifolia* Shankar Nagar Nagpur, India in cluster I and same clade no 2 confirming that they belong to identical geography Nagpur India. *P. foetida* from England (cluster-I) is appearing in a different cluster with *P. foetida* from India (cluster-II) showing geographically intra-specific variation among species.

### **Sequencing of amplified *ITS* and *rbcL* sequence**

The positive PCR product sequenced successfully as *ITS* 680 bp Ramaiya et al (2014) and *rbcL* 688 bp Laiou et al (2013) and Kress et al (2005) from 13 *Passiflora* species confirmed in gel electrophoresis photographs figure 5A & B respectively.

### **Evaluation of *rbcL* and *ITS4* markers**

In assessment of *rbcL* and *ITS4* markers we successfully sequenced 25 *rbcL* and 21 *ITS* sequences from 13 *Passiflora* species. However, only, *rbcL* 13(F) and 13 *ITS* (R) were considered for phylogenetic analysis. The table 3 shows evaluation of molecular properties among RAPD, *ITS* and *rbcL* loci in a present study.

### **BLAST analysis of *ITS* and *rbcL* sequences**

The individual sequenced nucleotide was searched against the Gen Bank database using BLAST nucleotide tool and deposited in GENE BANK. The deposited sequence gets a unique identifier as an accession number for each gene sequence (see table 2 for *ITS* sequences). The BLAST search has identified most similar sequences (search match) for query sequences of *ITS* and *rbcL* that yields 61 % and 15 % of species level respectively (see table 4).

### **BOLD search analysis**

The sequenced *rbcL* query sequences have not returned as an authentic match that may have occurred due to the less numbers of *rbcL* records of *Passiflora*. The BOLD search results for query sequences are shown in table 5.

### **ITS and *rbcL* sequences characteristic**

The final data set of aligned 13 *ITS/rbcL* sequences characteristic are consider in current phylogenetic investigation. The aligned multiple sequences of ITS site count were 1011 sites with gaps and 924 without gaps. The conserved site were 320, variable sites were 560; Parsimony information sites were 289 and 266 singleton sites respectively. In contrast, for *rbcL* sequences total site used 778 with gaps and 727 without gaps for pair wise and multiple sequence alignments. Then after multiple alignments by clustal W from 764 total sites, the conserved identified as, variable site at 731 parsimony information site were 717 and 12 singleton site respectively.

### **Phylogenetic analysis**

The phylogenetic tree is formed based on molecular data of RAPD, sequenced *ITS* and *rbcL* sequences from the *Passiflora* species in MEGA 6.0. The *rbcL* is a coding gene, therefore, the phylogeny construction analysis was performed using the amino acid with Jones-Taylor-Thornton (JTT) model, and tree was inferred by Nearest-Neighbor-Interchange (NNI) ML Heuristic Method. While, *ITS* is non-coding thus nucleotide sequence is considered.

### **Tree description of *ITS4* MP**

The results of MP algorithms of *ITS4* sequences show that the *Passiflora* species were distributed into four sub clades, and no specific clade/ cluster was observed (see figure 6 A). The *P. incarnata* RNI and *P. incarnata* SNI has been a cluster together at a top of a tree with bootstrap score 74. The node joining bootstrap value is 62 to top clade (74) and *P. incarnate* UAI whose descendent is the *P. Lady margrate* (bootstrap score 74). The *P. vitifolia* RNI and HNI are in clade showing similarity at a genetic level as they originate from a nearly equivalent region (bootstrap score 59). The 5 species *P. incarnata* RNI, *P. incarnata* SNI, *P. incarnata* UAI, *P.*

*Lady Margate*, *P. vitifolia* SNI and *P. vitifolia* RNI, *P. vitifolia* HNI has the same ancestor. The *P. incarnate* CWE and *P. caurelia* CWE both are different species. However, they are coming in the same clade showing genetic similarity due to a same geographical origin. The *P. foetida* is descendent to other species of CWE England that are in sub clades. The 4<sup>th</sup> well distinguished sub clade includes *P. foetida* UAI and UGI and *P. foetida* HNI is originated from them. *P. foetida* UAI and UGI are grouped together due to their identical growth environment and same region of Amravati based on species similarities. The *P. foetida* and *P. caurelai* are diverse from each other and appeared to a distance group. Similar results were observed by Muschner et al (2003). The figure 6 B shows consensus trees prepared by marking multifurcating nodes, in which conflicting branching patterns are resolved by selecting the pattern seen in more than 50 % of a tree consensus tree based on *ITS4* sequence. The bootstrap score of nine nodes is a consensus for 100 scores. The MP tree is in agreement of morphological characters confirming their proper grouping in a constructed.

#### **Tree description of *rbcL* MP**

The MP tree is divided into two main cluster (see figure 7A), cluster-I and cluster-II. Cluster-I (top) is bifurcated into two major branches, branch 1 consists of *P. lady Margaret* HNI, *P. foetida* HNI(bootstrap value 100), *P. incarnata* UAI, *P. caurelia* CWE and *P. vitifolia* HNI, *P. incarnata* RNI (bootstrap value 100) and branch 2 consist of *P. vitifolia* RNI and *P. incarnata* SNI (bootstrap value 48%). The -II include *P. foetida* CWE and *P. vitifolia* SNI, *P. foetida* UAI (bootstrap value 100%). Lastly, *P. foetida* UAI and *P. incarnate* CEW separated out from rest of the 2 cluster with 100% Bootstrap value. Figure 7B shows consensus tree from *rbcL* sequences.

#### **Discussion**

The PCR-RAPD markers are successfully used for assessment of genetic diversity in present study (Gustine and Huff, 1999) and there are reports for population genetics matrix using RAPD (Bussel.1999: Chtourou-ghorbel et al., 2002). The PCR RAPD experiments uses ten primers produces 133 random amplified polymorphic DNA, Nevertheless, Chtourou-ghorbel et al (2002) use 10 primers and obtained 127 polymorphous bands. The most important observation for PCR-RAPD study is that *P. vitifolia* (RNI) and *P. vitifolia* (SNI) are grouped side by side in tree showing highly relatedness. This supports the truth and confirms that they are originated in

around 3 km similar geographical area of Nagpur. These observations correspond with the previous taxonomy and genetic diversity studies suggesting similar species assembled in same clade and diverse species distributed unevenly as suggested by Loss et al (2006). On comparison of constructed tree from RAPD and ITS sequences, we found some similar results for *P. incarnata* UAI and *P. lady margrate* HNI that displays evolutionary similarity at the different time. The *P. caruelia* and *P. incarnata* from England is having the common ancestors. However, not co-evolved in RAPD tree in contrast, show the co-evolution in ITS tree.

The maximum parsimony (MP) based, and maximum likelihood (ML) based trees were very similar in *ITS4* sequences. For ML for bootstrap higher than 40% using *ITS* (see figure 8 A) is slight variation. However, MP and ML show strong bootstrap value for tree, which is in accordance with the species classification. The MP and ML topology, tree using *ITS*, develops the tree which is up to the mark, with the inter and intra species diversity and is in agreement with the morphological characters. The tree constructed using the *ITS* sequences in MP method has higher bootstrap value than the tree constructed using ML method as observed by Muschner et al (2003). There is no major difference in a tree except one was *P. foetida* CWE in ML method separate out independently. From MP and ML tree, it is confirmed that, the ancestor *P. caurelia* (C) nucleotide has undergone mutation of A/ T/G for the *P. foetida* (Muschner et al., 2003).

The Muschner et al (2003) investigated and found the similar results for MP and ML topology using 61 *Passiflora* species classified in four genera and 11 subgenera. For phylogenetic tree construction on a basis of ML analysis yields three major clades. In case of *rbcL*, it was observed that both method (MP) based and (ML) based trees (figure 8 B) were very dissimilar. The variation in the bootstrap value was observed in both method trees. Even for *rbcL* sequences low branch support was observed in most cases, which urge for more data support. Thus, the MP and ML topology using *rbcL* develops the tree which is not up to the mark for the inter and intra species diversity.

The profile developed using MP & ML for *ITS* displayed sequences differentiation, and the tree produced shows well resolved inter and intra-species separation in contrast; *rbcL* profiling produced a very different tree, purely inter species-level differentiation. The clades formed were merely the mixture of species, which leads that *rbcL* was not able to resolve any of the experimental species. Except in *rbcL* BLAST search, that identified two species correctly. The

*rbcL* does not produce a clade for intra species rather it supports and produce a clade for inter species, suggesting *rbcL* ignoble performance due to low rate of mutation (Bafeel et al., 2012). The sequenced *ITS4* and *rbcL* genes varies greatly in size (bp) and have different GC contents, which reflect the reproductive characteristic, deletion, duplication and excellent rate of evolution of species. The *ITS4* sequences from all the *Passiflora* species show valid conservation and variation in conserved sites (informative sites). Thus, is always the best choice for phylogenetic studies in plants (Ramaiya et al., 2014). This region shows better resolution at a species level and useful for genetic diversity study of *Passiflora* when compared with *rbcL* sequences, *ncpGS* and *trnL-trnF* (Mader et al., 2009; Krosnick et al., 2013; Ramaiya et al., 2014). The *ITS* region is considered as the complementing sequence data for DNA barcoding with the advantage of easy amplification. On comparison, it was found that GC content of *rbcL* sequence is 16.4% less than that of *ITS4* sequences.

The other *ITS4* and *rbcL* sequences of top three accession of *Passiflora* species (Table 4) from NCBI based on sequences similarities were also used for establishment of position of trial species in history of an evolution tree. Total 39 accessions were taken from NCBI along with 52 test for both the *ITS4* and *rbcL* gene sequence. A very important evolutionary trend has been observed in the radiate tree, here if we observe the radial tree in clock wise the radial tree concludes a specific pattern of species in order *P. edulis*, *P. vitifolia*, *P. cincinnata*, *P. alata*, *P. foetida*, *P. incarnata* and *P. caurelia*. Though the trial plants grouped in separate clade, the same order of pattern was observed within the experimental species in order *P. vitifolia*, *P. foetida*, *P. incarnata* and *P. caurelai*. The phylogenetic tree resulting from (*ITS4* and *rbcL*) sequence data analysis suggests that the phylogenetic tree constructed has a bootstrap value about 90% (*P. incarnata* CWE, *P. incarnata* RNI), which support strong prediction. The *ITS4* gene provides a valuable set of characters for tree construction and evolutionary studies in *Passiflora*. The *rbcL* sequences applied to MP and ML method did not identify a species correctly thus establishing its use as a local barcode for development of community phylogeny (Kress et al., 2007; Bafeel et al., 2012).

To sum up, the established PCR-RAPD results would be convenient for specific classification of species according to genetic similarity, and it will help for breeding program and hybridization for crop improvement (Chalmers et al., 1992) and *ITS4* is a very applicable for evaluation of

intra species diversity in *Passiflora*. However, *rbcL* results were unpredicted and very different from *ITS* tree. The intra species variation is not distributed evenly among species and its complex evolutionary history. As a result, in fewer cases led to classify the same plant species in a different group example (*P. edulis*, *P. caerulea*). Thus, combination pack of various genetic markers and large number of samples needs to consider together for inference of perfect robust phylogenetic studies. Moreover, the *Passiflora* species is highly diversified, which have been confirmed not only by morphological, secondary metabolites and phytochemical composition of leaves; fruit and flower. However, the information and resource for molecular studies are lacking in NCBI. The BOLD search has not retrieved the authenticate species may be due to fewer numbers of species *rbcL* sequence database except (*P. incarnata*) have been identified correctly using BOLD.

### **Conclusion**

In conclusion, the phenotypic character for morphological characterization and genotypic molecular data of PCR-RAPD, *ITS4* and *rbcL* sequences have a good applicability to dissect genetic diversity among *Passiflora* species from Indian and England.

This work successfully used ten RAPD primers that are polymorphic in nature, rapid, easy techniques, which avoid the use of radio labeled isotopes (Chtourou-Ghorbel et al. 2002) which produced 133 random amplified polymorphic DNA among 12 *Passiflora* species. The NTSYS dendrogram placed *P. vitifolia* from Ramdaspath Nagpur, India and *P. vitifolia* Shankar Nagar Nagpur, India in same clade with a similarity coefficient of 0.609 confirming that they belong to identical geography Nagpur India. In contrast, *P. foetida* from England is not coming in same clade with *P. foetida* from India showing geographically intra-specific variation among species. *ITS* MP consensus tree is supported by strong 100 bootstrap value clusters same species in equivalent clade as *P. vitifolia* (HNI and RNI) and *P. foetida* (UAI and UGI) belong to same place Amravati University. The MP & ML methods works independently based on similarity of sequences and suggest that *rbcL* is useful in genetic diversity studies. Our results suggest that *ITS* regions provide valid resolution at species level and are best for molecular identification and inter-intra species differentiation of *Passiflora* species. Nevertheless, *rbcL* region is good to distinguished inter species, yet unsuitable for intra-species differentiation. The *ITS* marker having parsimony informative sites may be used for identification at a species level, and *rbcL*

can be used as local DNA barcode. However, further studies may be undertaken to increase the sequencing data and including the large number of species and sub genera of *Passiflora* that will assist conservation as well as to get perfect resolution of hidden evolutionary history of *Passiflora*.

## References

- Agarwal M, shrivastava N, Padh H. Advances in molecular marker techniques and their applications in plant sciences. *Plant Cell Reporter*. 2008; 27: 617-631.
- Bafeel SO, Alaklabi A, Arif IA, Khan HA, Alfarhan AH, Ahamed A, Thomas J, Bakir MA. Ribulose-1, 5- biphosphate carboxylase (rbcL) gene sequence and random amplification of polymorphic DNA (RAPD) profile of endangered tree species *Coptosperma graveolens* sub sp. *Arabicum* (S. Moore ) Degreef. *Plant Omics Journal*. 2012; 5 (3): 285-290.
- Batugal PA, Kanniah J, Lee SY and Oliver JT. Medicinal Plants Research in Asia: The Framework and Project Workplans. International Plant Genetic Resources Institute Regional Office for Asia Serdang, Selangor Malaysia. 2004; Vol. 1 221.
- Bussel JD. The distribution of random amplified polymorphic DNA (RAPD) diversity amongst populations of *Isotoma petraea* (Lobeliaceae). *Mol Ecol*. 1999; 8:775–789.
- Carneiro MS, Camargo LEA, Coelho ASG, Vencovsky R, Junior RPL, Stenzel NMC, Vieira MLC. RAPD- based Genetic Linkage Maps of Yellow Passion fruit (*Passiflora edulis* Sims. *F. flavicarpa* Deg.). *Genome*. 2002; 45: 670-678.
- Castro APGD, Faleiro FG, Carvalho DDC, Fonseca KGD, Vilela MDF, Junqueira NTV, Cares JE. Genetic Variability of *Passiflora* spp. From Commercial fields in the Federal District, Brazil. *Ciencia Rural Santa Maria*. 2011; 41 (6): 996- 1002.
- Cerqueira-Silva CBM, Jesus ON, Santos ESL, Correa RX, Souza AP. Genetic Breeding and Diversity of the Genus *Passiflora*: Progress and Perspectives in Molecular and Genetic Studies. *Internatiobal Journal of Molecular Sciences*. 2014; 15: 14122-14152.
- Chalmers KJ, Waugh R, Sprent JI, Simons AJ, Powell W. Detection of Genetic Variation between and Within population of *Gliricida sepium* and *G. maculate* using RAPD markers. *Heredity*. 1992; 69:465–472.
- Chtourou-Ghorbel N, Lauga B, Brahim BB, Combes D and Marrakchi M. Genetic Variation analysis in the genus *Lathyrus* using RAPD markers. *Genet Resour Crop Ev*. 2002; 49: 363-370.

- Crochemore MI, Molinari HBC, Vieira LGE. Genetic diversity in passion fruit (*Passiflora* spp.) evaluated by rapid markers. *Braz Arch Biol Tech.* 2003; 46(4):521–527.
- Dhawan K, Dhawan S, Sharma A. *Passiflora* A Review update. *Journal of Ethnopharmacology.* 2004; 94: 1–23.
- Dhawan K, Kumar S, Sharma A. Suppression of alcohol cessation oriented hyperanxiety by the benzoflavone moiety of *Passiflora incarnata* Linneaus in mice. *J. Ethnopharmacol.* 2002; 8(1-2): 239-244.
- Fajardo D, Angel F, Grum M, Tohme J, Lobo M, Roca WM and Sanchez I. Genetic variation analysis of the genus *Passiflora* L. using RAPD markers. *Euphytica.* 1998; 101: 341–347.
- Fonseca KGD, Faleiro FG, Peixoto JR, Junqueira NTV, Silva MS, Bellon G, Junqueira KP, Vaz CDF. Recovery Analysis of Recurrent Genitor in Sour Passion Fruit Through RAPD Markers. *Rev Bras Frutic Jaboticabal.* 2009; 31 (1) 145-153.
- Gustine DL, Huff DR. Genetic variation within and among white clover populations from managed permanent pastures of the northeastern US. *Crop Sci.* 1999; 39: 524- 530.
- Hoffmann L, Maury S, Martz F, Geoffroy P, Lagrand M. Purification, cloning and Properties of an Acyltransferase Controlling Shikimate and Quinate Ester Intermediates in Phenylpropanoid Metabolism. *The J. Biol. Chem.* 2003; 278 (1): 95- 103.
- Hollingsworth ML, Clark AA, Forrest LL, Richardson J, Pennington RT, Long DG, Cowan R, Chase MW, Gaudeul M and Hollingsworth PM. Selecting barcoding loci for plants: evaluation of seven candidate loci with species level sampling in three divergent groups of land plants. *Molecular Ecology Resources.* 2009; 9: 439-457.
- Hollingsworth PM, Graham SW, Little DP. Choosing and Using a Plant DNA Barcode. 2011; 6 (5): e19254.
- Hollingsworth. Refining the DNA barcode for land plants. *PNAS.* 2011; 108 (49): 19451- 19452.
- Hopley T, Webber BL, Raghu S, Morin L and Byrne M (2021) Revealing the Introduction History and Phylogenetic Relationships of *Passiflora foetida* sensu lato in Australia. *Front. Plant Sci.* 12:651805.
- Jaccard P. Étude comparative de la distribution florale dans une portion des Alpes et des Jura', *Bulletin Societe' Vandoise des sciences naturelles.* 1901; 37: 547-579.
- Junqueira KP, Falerio FG, Junqueira NTV, Bellon G, Ramos JD, Braga MF, De souza LS. Confirmation of Interspecific Hybrids in *Passiflora* Using Molecular Markers. *Rev Bras Frutic Jaboticabal.* 2008; 30 (1): 191-196.
- Junqueira KP, Falerio FG, Ramos JD, Bellon G, Junqueira NTV, Braga MF. Genetic Variability of Wild Passion Fruit Determined By Molecular Markers. *Rev Bras Frutic Jaboticabal.* 2007; 29 (3): 571-575.

- Khan MQ, Khalil AT, Shinwari ZK. Searching for DNA barcodes in Plants. *American-Eurasian Journal of Agriculture and Environmental Science*. 2015; 15(4): 504-513.
- Kress WJ and Erickson . A Two- Locus Global DNA Barcode for Land Plants: The Coding *rbcl* Gene Complements the Non-Coding *trnH-psbA* spacer Region. *PLOS ONE*. 2007; 6( e508): 1-10.
- Kress WJ and Erickson DL. DNA barcodes: Genes, Genomics and Bioinformatics. *PNAS*. 2008; 105 (8): 2761-2762.
- Kress WJ, Wurdack KJ, Zimmer EA, Weigt LA and Janzen DH. Use of DNA barcodes to identify flowering plants. *PNAS*. 2005; 102 (23): 8369–8374.
- Krosnick SE, Porter-utley KE, Macdougall JM, Jorgensen, Mcdade. New insights into the evolution of *Passiflora* subgenus *Decaloba* (Passifloraceae) Phylogenetic relationships and morphological synapomorphies. *Systemic botany*. 2013; 38 (3): 692-713.
- Lade BD, Patil AS and Paikrao HM. Efficient genomic DNA extraction protocol from medicinal rich *Passiflora foetida* containing high level of polysaccharide and polyphenol. *SpringerPlus*. 2014; 3:457.
- Laiou A, Mandolin LA, Piredda RB, Simeone MC. DNA barcoding as a complementary tool for conservation and valorization of forest resources. *ZooKeys*. 2013; 365: 197-213.
- Loss ACC, Milk YLR, Louro ID, Batitucci MCP. Genetic diversity of populations of passion fruit (*Passiflora alata*) in the state of Espírito Santo, Brazil. *Nature on line*. 2006; 4 (2): 55-61.
- Mader G, Zamberlan PM, Fagundes NJR, Magnus T, Salzano FM, Bonatto SL, Fretias LB. The use and limit of ITS data in the analysis of intraspecific variation in *Passiflora L.* (Passifloraceae). *Genetics and Molecular Biology*. 2009; 33 (1): 99-108.
- Molinari HB and Crochemore ML. Genomic DNA Extraction from *Passiflora* spp. For PCR-RAPD Analysis. *Rev Bras Frutic Jaboticabal*. 2001; 23 (2) 447-450.
- Mondini L, Noorani A, Pagnotta MA. Assessing Plant Genetic Diversity by Molecular Tools. *Diversity*. 2009; 1: 19-35.
- Muschner VC, Lorenz AP, Cervi AC et al. A first molecular phylogenetic analysis of *Passiflora* (Passifloraceae),” *American Journal of Botany*. 2003; vol. 90, no. 8, pp. 1229–1238.
- Oluoch P, Nyaboga EN, Bargul JL. Analysis of genetic diversity of passion fruit (*Passiflora edulis* Sims) genotypes grown in Kenya by sequence-related amplified polymorphism (SRAP) markers, *Annals of Agrarian Science*, 2018; 16(4), 367-375.
- Patwardhan A, Ray S, Roy A. Molecular Markers in Phylogenetic studies- A review. *Phylogenetics & Evolutionary Biology*. 2014; 2 (2): 1-9.

Ramaiya SD, Bujang JS and Zakaria MH. Genetic Diversity in *Passiflora* Species Assessed by Morphological and ITS Sequence Analysis. Scientific World Journal. 2014; Volume 2014, Article ID 598313, 11 pages <http://dx.doi.org/10.1155/2014/598313>.

Rodriguez Castillo NC, Wu X, Chacón MI, Melgarejo LM, Blair MW. Genetic Diversity of Purple Passion Fruit, *Passiflora edulis f. edulis*, Based on Single-Nucleotide Polymorphism Markers Discovered through Genotyping by Sequencing. Diversity. 2021, 13, 144.

Souza MM, Santana Pereira TN, Carneiro ieira ML. Cytogenetic Studies in Some Species of *Passiflora* L. (Passifloraceae): A Review Emphasizing Brazilian Species. Braz Arch Biol Tech. 2008; 51(2):247–258.










Vanderplank J. Passion flowers. Cambridge, Massachusetts: The MIT Press, Massachusetts Institute of Technology. 1991.





Viana AJC, SSouza MM, Araujo IS, Correa RX, Ahnert D. Genetic Diversity in *Passiflora* species determined by Morphological and Molecular Characteristics. Biologia Plantarum. 2010; 54 (3) 535-538.

**Table 1.** Shows the name of primer fragment (Fw/Rw), respective sequences and references that were used in experimentation of PCR-RAPD and *ITS* /*rbcL* amplification.

Sr. no.	Primer fragment	Sequence (5' → 3')	References
1	Akansha 1	OPA04-AATCGGGCTG	Crochemore et al., 2003
2	Akansha 2	OPB08-GTCCACACGG	Crochemore et al., 2003
3	Akansha 3	OPB18-CCACAGCAGT	Crochemore et al., 2003
4	Akansha 4	OPB19-ACCCCGAAG	Crochemore et al., 2003
5	Akansha 5	OPB20-GGACCCTTAC	Crochemore et al., 2003
6	Akansha 6	1-CCTGGGCTTC	Aukar et al., 2002
7	Akansha 7	5-CCTGGGTTC	Aukar et al., 2002
8	Akansha 8	53-CTCCCTGAGC	Aukar et al., 2002
9	Akansha 9	54-GTCCCAGAGC	Aukar et al., 2002
10	Akansha10	CGGGAGACCC	Chalmers et al., 1992
11	<i>ITS</i>	TCCGTAGGTGAACCTGCGG (Fw) CCTCCGCTTATTGATATGA (Rw)	Ramaiya et al., 2014 Ramaiya et al., 2014
12	<i>rbcL</i>	ATGTCACCACAAACAGAAAC (Fw)	Kress et al., 2005

**Table 2.** Represent the sampling source of *Passiflora* species, flower with specific code used for particular species, source code, countries to which they belong and their location on Google's map are summarized.

Sr no	Code	Species	Flower	Source	Source code	Gene bank (NCBI) Accession no for ITS	Location Map (See figure 2)	Country
1	A	<i>Passiflora incarnata</i>		Amravati University	UAI	KT003196	B	India
2	B	<i>Passiflora vitifolia</i>		Hill top Nagpur	HNI	KT003197	B	India
3	C	<i>Passiflora foetida</i>		Chiltern Wallingford	CWE	KT003198	A	England
4	D	<i>Passiflora foetida</i>		Amravati University	UAI	KT003199	B	India
5	E	<i>Passiflora incarnata</i>		Chiltern Wallingford	CWE	KT003200	A	England
6	F	<i>Passiflora Lady Margaret</i>		Hill top Nagpur	HNI	KT003201	B	India
7	G	<i>Passiflora incarnata</i>		Ramdaspath Nagpur	RNI	KT003202	A	India
8	H	<i>Passiflora vitifolia</i>		Ramdaspath Nagpur	RNI	KT003203	A	India
9	I	<i>Passiflora incarnata</i>		Shankar nagar Nagpur	SNI	KT003204	B	India

10	J	<i>Passiflora vitifolia</i>		Shankar nagar Nagpur	SNI	KT003205	B	India
11	K	<i>Passiflora foetida</i>		Hill top Nagpur	HNI	KT003206	B	India
12	L	<i>Passiflora caurelia</i>		Chiltern Wallingford	CWE	KT003207	A	England
13	M	<i>Passiflora foetida</i>		Amravati University	UAI	KT003208	B	India

**Table 3.** Shows the evaluation of molecular properties such as PCR, sequencing success, sequence length, overall distance in maximum parsimony and maximum likelihood method, informative, singleton, variable and conserved site, GC %, resolutions of species (%) of RAPD, ITS and *rbcL* loci in a present study

Sr no	Parameters	ITS	<i>rbcL</i>	RAPD
1	PCR success (%)	100%	100%	100%
2	Sequencing success for 52 PCR(%)	100%	100%	*
3	Sequencing success for 26 PCR(%)	100%	99%	*
4	Sequencing success over all (F)	44.44%	100%	*
5	Sequencing success over all (R)	83.33%	92.30%	*
6	Sequence length	1101	778	*
7	Aligned length (bp)	924	764	*
8	Overall distance in 52 sequences from NCBI (ML method)	0.602	2.741	*
9	Overall distance (MP method)	0.147	3.315.	*
10	No of parsimony informative sites (%)	289	717	133
11	Variable informative sites (%)	560	731	133
12	Singleton site	266	12	*

<b>13</b>	Conserved site	320	3	*
<b>14</b>	Number of sample	13	13	12
<b>15</b>	%GC	59.6	43.5 %.	*
<b>16</b>	Resolution of species (%)	8/13	2/13	2/12

**Note:** \*: not applicable and not perform, MP: maximum parsimony method, ML: maximum likelihood method, bp: base pair, PCR: polymerase chain reaction.

**Table 4.** Show's the BLAST database search match for similar and phylogenetic relationship using *ITS* and *rbcL* sequences.

UNDER PEER REVIEW

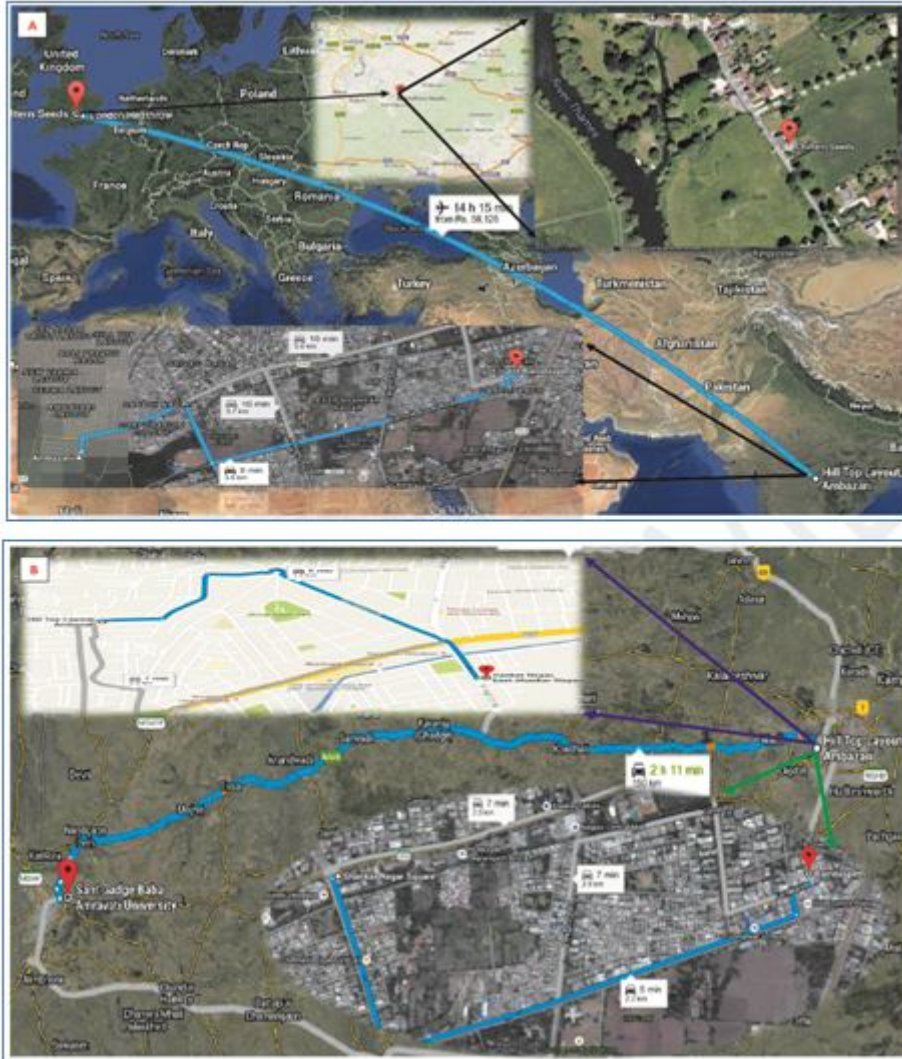
ITS sequences					rbcL sequence				
Sr no	Species with code	Morphological identification	BLAST search match & similarity (%)	BLAST top 3 search & similarity (%)	Phylogenetic affinity	Morphological identification	BLAST search match & similarity %	BLAST top 3 search & similarity (%)	Phylogenetic affinity
1	<i>Passiflora incarnata</i> UAI	<i>P. incarnata</i> (781bp)	<i>P. incarnata</i> 89% <i>P. incarnata</i> 87% <i>P. edulis</i> 87%	<i>P. edulis</i> 87% <i>P. edulis</i> 87% <i>P. edulis</i> 87%	<i>P. incarnata</i>	<i>P. incarnata</i> (734bp)	<i>p. qabrielliana</i> 99% <i>P. incarnata</i> 98% <i>P. incarnata</i> 98%	<i>P. cerasina</i> 92% <i>P. qabrielliana</i> 92% <i>P. edulis</i> 93%	<i>P. incarnata</i>
2	<i>Passiflora vitifolia</i> HNI	<i>P. vitifolia</i> (499bp)	<i>P. vitifolia</i> 89% <i>P. jileki</i> 89% <i>P. cincinnata</i> 87%	<i>P. vitifolia</i> 89% <i>P. cincinnata</i> 87% <i>P. cincinnata</i> 87%	<i>P. vitifolia</i> *	<i>P. vitifolia</i> (764bp)	<i>P. vitifolia</i> 99% <i>P. vitifolia</i> 99% <i>P. coccinea</i> 99%	<i>P. vitifolia</i> 99% <i>P. vitifolia</i> 99% <i>P. coccinea</i> 99%	<i>P. vitifolia</i> *
3	<i>Passiflora foetida</i> CWE	<i>P. foetida</i> (732bp)	<i>P. foetida</i> 83% <i>P. foetida</i> 82% <i>P. foetida</i> 82%	<i>P. foetida</i> 82% <i>P. foetida</i> 93% <i>P. foetida</i> 82%	<i>P. foetida</i> *	<i>P. foetida</i> (704bp)	<i>P. foetida</i> 99% <i>P. palmeri</i> 99% <i>P. qiberti</i> 98%	<i>P. ciliata</i> 98% <i>P. palmeri</i> 99% <i>P. tokuoka</i> 98%	<i>P. foetida</i>
4	<i>Passiflora foetida</i> UAI	<i>P. foetida</i> (858bp)	<i>P. foetida</i> 95% <i>P. foetida</i> 94% <i>P. foetida</i> 94%	<i>P. foetida</i> 94% <i>P. foetida</i> 95% <i>P. foetida</i> 94%	<i>P. foetida</i> *	<i>P. foetida</i>	<i>P. foetida</i> 99% <i>P. platyloba</i> 98% <i>P. foetida</i> 97%	<i>P. ciliata</i> 97% <i>P. tokuoka</i> 97% <i>P. foetida</i> 97%	<i>P. foetida</i>
5	<i>Passiflora incarnata</i> CWE	<i>P. incarnata</i> (779bp)	<i>P. edulis</i> 98% <i>P. incarnata</i> 93% <i>P. incarnata</i> 93%	<i>P. edulis</i> 98% <i>P. edulis</i> 98% <i>P. edulis</i> 98%	<i>P. incarnata</i>	<i>P. incarnata</i>	<i>P. incarnata</i> 99% <i>P. incarnata</i> 98% <i>P. incarnata</i> 98%	<i>P. edulis</i> 100% <i>P. odontophylla</i> 99% <i>P. edulis</i> 99%	<i>P. incarnata</i>
6	<i>Passiflora Lady Margaret</i> HNI	<i>P. Lady Margaret</i> (634bp)	<i>P. villosa</i> 89% <i>P. tinuifolia</i> 89% <i>P. oerstedii</i> 88%	<i>P. incarnata</i> 95% <i>P. Cincinnata</i> × <i>Incarnata</i> 94% <i>P. edulis</i> 90%	<i>P. Lady Margaret</i>	<i>P. Lady Margaret</i>	<i>P. umbilicata</i> 99% <i>P. qalbana</i> 99% <i>P. serratifolia</i> 99%	<i>P. incarnata</i> 99% <i>P. incarnata</i> 99% <i>P. incarnata</i> 99%	<i>P. Lady Margaret</i>
7	<i>Passiflora incarnata</i> RNI	<i>P. incarnata</i> (647bp)	<i>P. incarnata</i> 91% <i>P. incarnata</i> 90% <i>P. edulis</i> 90%	<i>P. edulis</i> 90% <i>P. edulis</i> 90% <i>P. edulis</i> 90%	<i>P. incarnata</i>	<i>P. incarnata</i>	<i>P. incarnata</i> 98% <i>P. incarnata</i> 98% <i>P. incarnata</i> 98%	<i>P. cerasina</i> 99% <i>P. qabrielliana</i> 99% <i>P. edulis</i> 99%	<i>P. incarnata</i>
8	<i>Passiflora vitifolia</i> RNI	<i>P. vitifolia</i> (650bp)	<i>P. vitifolia</i> 99% <i>P. cincinnata</i> 95% <i>P. edulis</i> 95%	<i>P. vitifolia</i> 99% <i>P. cincinnata</i> 95% <i>P. edulis</i> 94%	<i>P. vitifolia</i> *	<i>P. vitifolia</i>	<i>P. vitifolia</i> 98% <i>P. vitifolia</i> 98% <i>P. candida</i> 98%	<i>P. ciliata</i> 99% <i>P. tokuoka</i> 99% <i>P. foetida</i> 99%	<i>P. vitifolia</i>
9	<i>Passiflora incarnata</i> SNI	<i>P. incarnata</i> (654bp)	<i>P. incarnata</i> 90% <i>P. alata</i> 89% <i>P. edulia</i> 89%	<i>P. vitifolia</i> 93% <i>P. alata</i> 92% <i>P. cincinnata</i> 93%	<i>P. incarnata</i>	<i>P. incarnata</i>	<i>P. incarnata</i> 98% <i>P. incarnata</i> 98% <i>P. incarnata</i> 97%	<i>P. ambigua</i> 98% <i>P. cerasina</i> 99% <i>P. qabrielliana</i> 99%	<i>P. incarnata</i>
10	<i>Passiflora vitifolia</i> SNI	<i>P. vitifolia</i> (761bp)	<i>P. cincinnata</i> 94% <i>P. vitifolia</i> 93% <i>P. alata</i> 92%	<i>P. alata</i> 89% <i>P. incarnata</i> 90% <i>P. edulis</i> 89%	<i>P. vitifolia</i> *	<i>P. vitifolia</i>	<i>P. vitifolia</i> 99% <i>P. vitifolia</i> 99% <i>P. riparia</i> 99%	<i>P. vitifolia</i> 99% <i>P. vitifolia</i> 99% <i>P. coccinea</i> 99%	<i>P. vitifolia</i>
11	<i>Passiflora foetida</i> HNI	<i>P. foetida</i> (856bp)	<i>P. foetida</i> 95% <i>P. foetida</i> 94% <i>P. foetida</i> 94%	<i>P. foetida</i> 95% <i>P. foetida</i> 95% <i>P. foetida</i> 94%	<i>P. foetida</i> *	<i>P. foetida</i>	<i>P. foetida</i> 99% <i>P. clathrata</i> 99% <i>P. mathewsii</i> 99%	<i>P. ciliata</i> 99% <i>P. tokuoka</i> 99% <i>P. foetida</i> 99%	<i>P. foetida</i>
12	<i>Passiflora caurelia</i> CWE	<i>P. caurelia</i> (744bp)	<i>P. caurelia</i> 92% <i>P. caurelia</i> 92% <i>P. caurelia</i> 92%	<i>P. caurelia</i> 92% <i>P. caurelia</i> 92% <i>P. caurelia</i> 92%	<i>P. caurelia</i> *	<i>P. caurelia</i>	<i>P. caurelia</i> 99% <i>P. caurelia</i> 99% <i>P. caurelia</i> 99%	<i>P. incarnata</i> 99% <i>P. caurelia</i> 99% <i>P. caurelia</i> 99%	<i>P. caurelia</i>
13	<i>Passiflora foetida</i> UAI	<i>P. foetida</i> (924bp)	<i>P. foetida</i> 95% <i>P. foetida</i> 94% <i>P. foetida</i> 94%	<i>P. foetida</i> 95% <i>P. foetida</i> 95% <i>P. foetida</i> 94%	<i>P. foetida</i> *	<i>P. foetida</i>	<i>P. pilosicorona</i> 99% <i>P. speciose</i> 99% <i>P. foetida</i> 98%	<i>P. vitifolia</i> 99% <i>P. coccinea</i> 99% <i>P. vitifolia</i> 99%	<i>P. foetida</i>

**Note:** The \* species have been searched and identified correctly from NCBI BLAST search option.

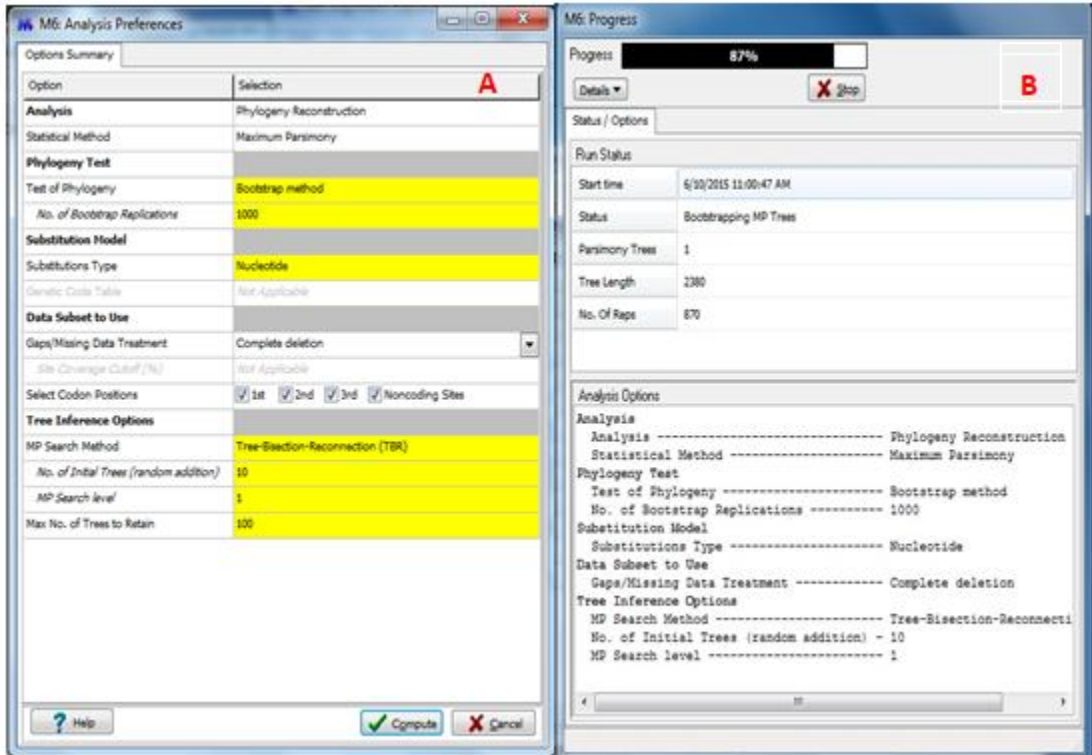
**Table 5.** Shows the BOLDSYSTEM database search matches of query *rbcL* sequences for a possible similarity match of *Passiflora* species. The species code; their morphological identifications along bold system search results with similarity % and phylogenetic affinity are displayed.

Sr no	<i>rbcL</i> sequence				
	Species with code	Morphological identification	BOLD SYSTEM search	Similarity (%)	Phylogenetic affinity
1	<i>Passiflora incarnata</i> UAI	<i>P. incarnata</i>	<i>P. gabrielliana</i>	99.12%	<i>P. incarnata</i>
2	<i>Passiflora vitifolia</i> HNI	<i>P. vitifolia</i>	<i>P. coccinea</i>	100%	<i>P. vitifolia</i>
3	<i>Passiflora foetida</i> CWE	<i>P. foetida</i>	<i>P. ciliata</i>	98.58%	<i>P. foetida</i>
4	<i>Passiflora foetida</i> UAI	<i>P. foetida</i>	<i>P. ciliata</i>	95.52%	<i>P. foetida</i>
5	<i>Passiflora incarnata</i> CWE	<i>P. incarnata</i>	<i>P. odontophylla</i>	99.71%	<i>P. incarnata</i>
6	<i>Passiflora Lady</i> <i>Margaret</i> HNI	<i>P. Lady</i> <i>Margaret</i>	<i>P. incarnata</i>	99.27%	<i>P. Lady</i> <i>Margaret</i>
7	<i>Passiflora incarnata</i> RNI	<i>P. incarnata</i>	<i>P. gabrielliana</i>	99.71%	<i>P. incarnata</i>
8	<i>Passiflora vitifolia</i> RNI	<i>P. vitifolia</i>	<i>P. ciliata</i>	98.44%	<i>P. vitifolia</i>
9	<i>Passiflora incarnata</i> SNI	<i>P. incarnata</i>	<i>P. incarnata</i>	97.06%	<i>P. incarnata</i> *
10	<i>Passiflora vitifolia</i> SNI	<i>P. vitifolia</i>	<i>P. coccinea</i>	99.85%	<i>P. vitifolia</i>
11	<i>Passiflora foetida</i> HNI	<i>P. foetida</i>	<i>P. ciliata</i>	99.42%	<i>P. foetida</i>
12	<i>Passiflora caurelia</i> CWE	<i>P. caurelia</i>	<i>P. incarnata</i>	99.56%	<i>P. caurelia</i>
13	<i>Passiflora foetida</i> UAI	<i>P. foetida</i>	<i>P. coccinea</i>	98.86%	<i>P. foetida</i>

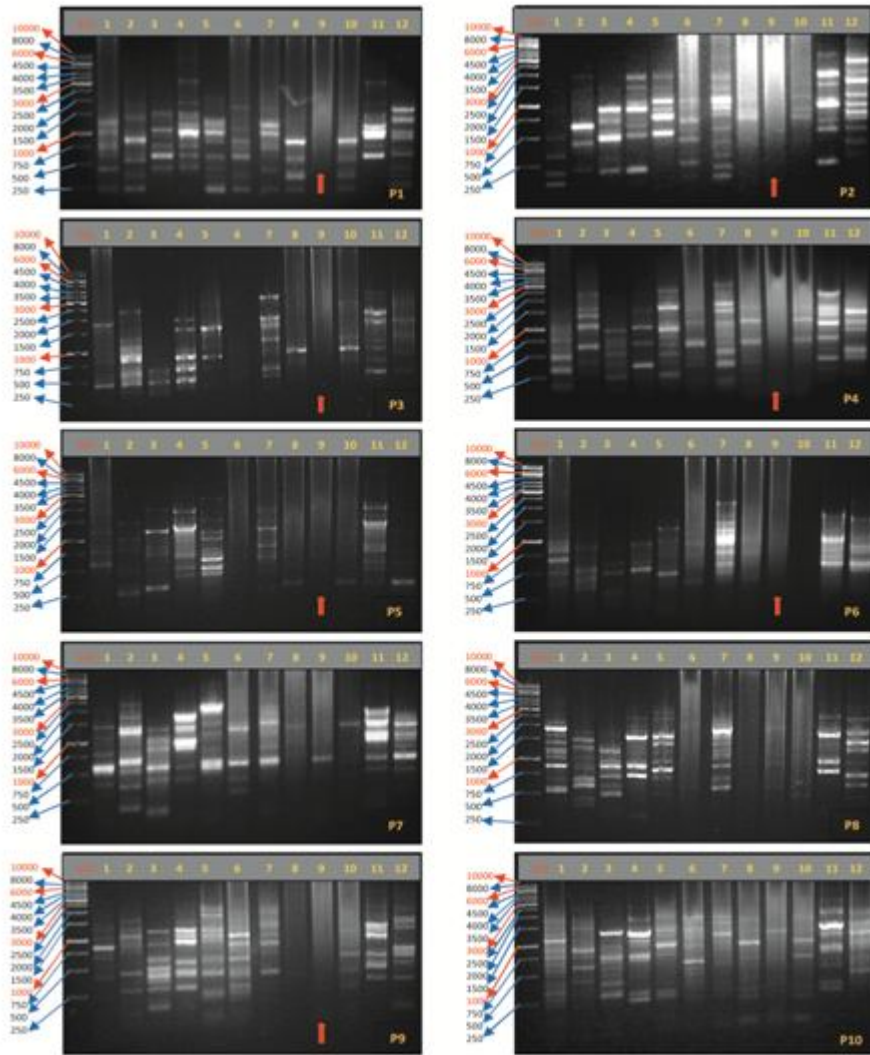
**Note:** Only one *Passiflora* species (*P. incarnata*) marker as \* have been identified correctly using BOLDSYSTEM search database.



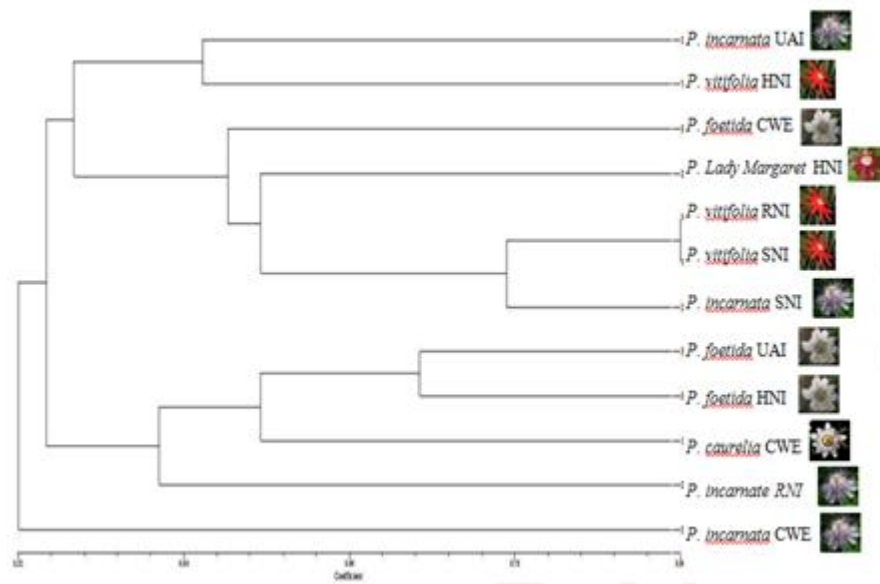
**Figure 1.** Displays the google map location of the plant species with their distance in kilometer (Km). The estimated time and kilometer required to cover and distance are showed in **A.** between UK and India. **B.** within Indian locations.



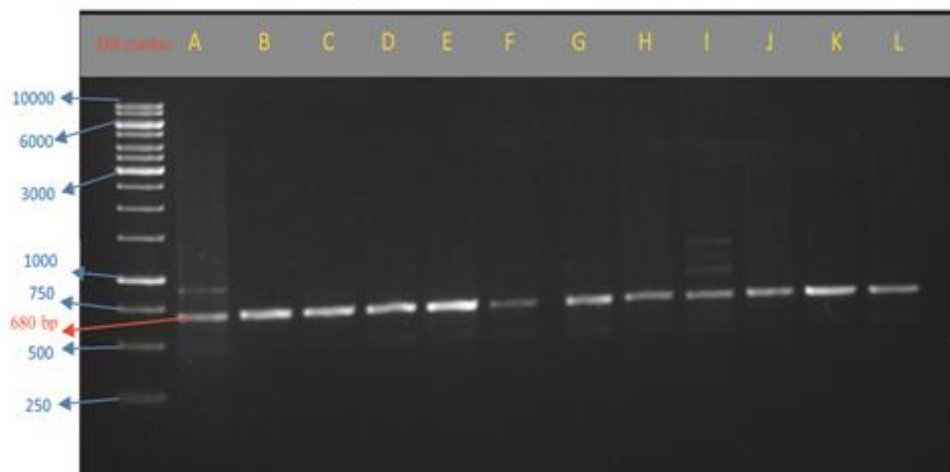
**Figure 2.** Shows a snapshot of the phylogeny analysis preferences, statistical maximum parsimony method, **A:** for *ITS* sequence **B:** analysis with 1000 bootstrap replications for *rbcL* sequence.

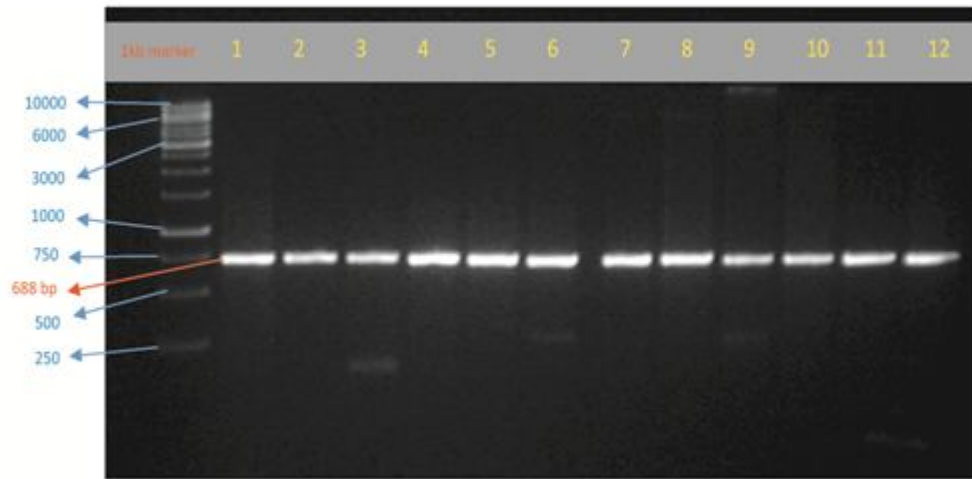


**Figure 3.** Shows gel profile of RAPD-PCR primers (P1-P10), 1 kb: marker ladder and (1-12) are the specific *Passiflora* species (see table 2) are loaded in 1.2 % agarose gel. In 9<sup>th</sup> species DNA was not amplified in most cases indicated by (↑ red color upper arrow).

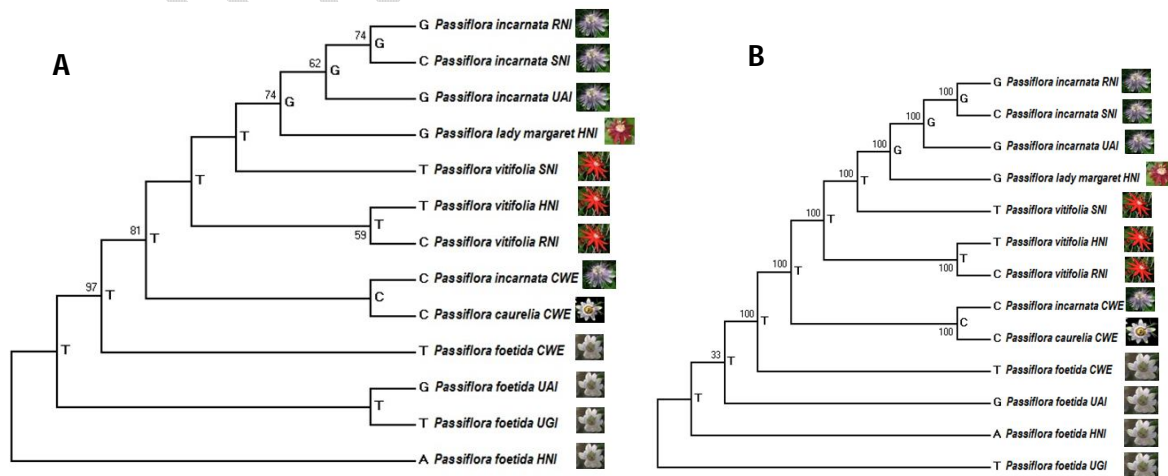


**Figure 4.** A dendrogram generated using UPGMA analysis showing polymorphism between *Passiflora* species using RAPD PCR markers. The dendrogram is generated using NTSYSpc (Numerical Taxonomy and Multivariate Analysis System Version 2.0).





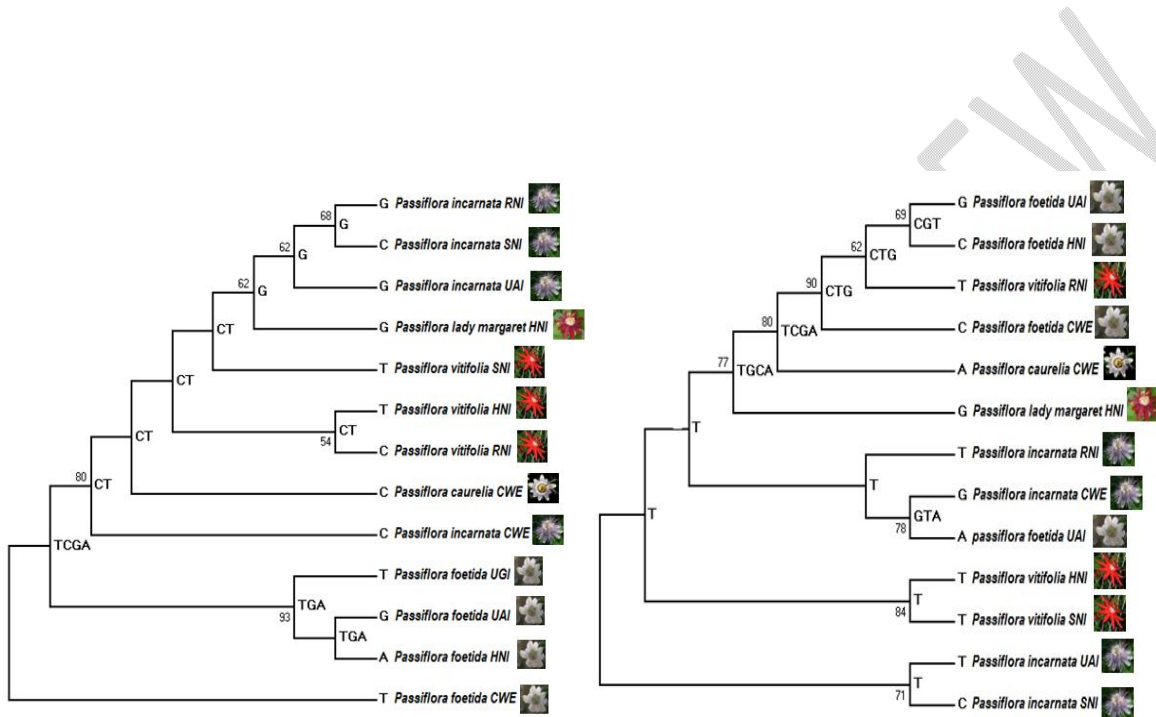
**Figure 5** the PCR amplified products for **A:** ITS primer (680 bp) and **B:** *rbcL* primer from 12 *Passiflora* species. 1kb marker, A-L and 1-12 are *Passiflora* species code (see table 2).



**Figure 6.** Shows the maximum parsimony analysis of *Passiflora* species using amplified *ITS* nucleotide sequences. **A:** The parsimonious trees with length = 338, the maximum node score is 97 for *P. foetida* CWE and rest of above species. **B:** Reconstructed consensus tree, all the nodes of branches show 100 bootstrap score except bottom 3<sup>rd</sup>, which shows 33 scores for *P. foetida* UAI and rest above branch.



**Figure 7.** Shows the **A:** evolutionary history using maximum parsimony analysis of *rbcL* nucleotide sequences from *Passiflora* species. The bootstrap 100 is obtained for four clades, except 44 for fourth branch from top. **B:** Shows consensus tree of *rbcL* nucleotide sequences with the bootstrap 100 is obtained for four clades.



**Figure 8.** Shown the molecular phylogenetic analysis by maximum likelihood method using **A:** ITS sequences from *Passiflora* species with bootstrap value greater than 50% are displayed with maximum 93 bootstrap was noted. **B:** *rbcL* based on the Kimura 2-parameter model were a total of 505 positions taken in the final dataset with bootstrap value higher than 40% with maximum 90 was displayed.