

Original Research Article

Positive Effect of Natural Resources Management Interventions on Bio-Physical Indicators in Polla Watershed Project of Srikakulam District, Andhra Pradesh, India

ABSTRACT

Aim: This Investigation was taken up to detect the changes in the Bio-Physical Indicators of Polla Watershed project implemented under Pradhan MantriKrishiSinchayeeYojana (PMKSY) watershed project in Srikakulam District of Andhra Pradesh, India.

Place and duration of study: This study was conducted at the Polla watershed area of Seetham pet mandal of Srikakulam District, which is under drought Prone Area Project (DPAP) by Panchayat Raj and Rural Development (PR and RD) Department, Andhra Pradesh during 2013 to 2020.

Methodology: High-resolution satellite data like Resourcesat-2, Linear Imaging and Self Scanning-IV (LISS-IV) of 2013 (pre-treatment) and 2020 (post-treatment) and ArcGIS 10.8 software were used in this project to measure the changes in land use/land cover and biomass during the project period (2013-20).

Result: The results showed a reduction in wastelands by 59.67 % (786.59 ha) and an increase in cropland and plantation by 32.68% (756.34ha) and 2.16% (24.55ha) respectively. There is an increase in dense vegetation 49.36 ha (3.93 %), medium vegetation 412.04ha (28.36 %), Low Vegetation 247.93ha (19.25 %) and a decrease in nil vegetation 709.33 ha (-57.99 %). Another positive indicator of watershed development in the project area is the increase in waterbodies by 17.10 %, due to the construction of rainwater harvesting structures i.e., 21 percolation tanks, 10 rockfill dams, 18 loose boulder structures, 19 Mini Percolation Tanks etc.

Conclusion: This study reveals that an additional area of 5.69ha (17.10%) increased under water bodies and 786.59 ha of wasteland converted to cultivable land due to the

construction of rockfill dams, percolation tanks, mini percolation tanks, check walls and loose boulder structures. This area is reflected in cropland and plantations.

Keywords: Watershed, Land Use / Land Cover (LULC), Normalised Difference Vegetation Index, (NDVI), Remote Sensing, Geographical Information System (GIS)

1. INTRODUCTION

India is an agrarian country where agriculture and allied sectors viz. Horticulture, Livestock, forestry, and fisheries together contribute 18.8% of the country's Gross Value Added (GVA) for the year 2021-2022 and employ more than 50% of the nation's workforce. Therefore, it is imperative that to maintain the sustainable economy of the country, agriculture must be taken care of. It also assumes prime importance that about 60% of India's agricultural land is rain dependent. As rainfed crops account for 48% area under food crops and 68% area under non-food crops, all efforts need to be taken to address the concerns of rainfed areas. Despite India ranking first in rainfed agriculture globally in terms of areas and production, productivity is among the lowest in the world. Rainfed agriculture suffers from several biological and socio-economic constraints [1]. These include low and erratic rainfall, land degradation and poor productivity, low level of input use and technology adoption, low drought power ability, inadequate fodder availability, low productive livestock, resource-poor farmers, and inadequate credit availability. Therefore, Govt. of India has created the National Rain Fed Area Authority (NRAA) as a crucial component of the new watershed policy to address the rain-fed areas. A watershed is a system-based approach that facilitates the holistic development of agriculture and allied activities in the selected watershed area. The stress is on the improvement of wasteland, runoff reduction, water conservation and protective irrigation mechanism. As recommended by Parthasarathy Committee [2] Integrated Watershed Management Programme (IWMP) was started, w.e.f.26-02-2009 for the development of areas, combining all other existing rainfed area development programs. As per common guidelines for watershed development projects – 2008 (revised edition 2011), the period for completing watershed development projects is four to seven years. After approval of PMKSY the IWMP was subsumed as one of its components and IWMP is now implemented as WDC-PMKSY w.e.f. 01.07.2015.

In Andhra Pradesh, the program is being implemented by State Level Nodal Agency (SLNA) under the PR & RD Department. A total of 373 projects are being taken up in the State in five

batches in all the districts except Krishna district. In Srikakulam District, a total of 10 projects in the fifth batch are being implemented.

The present study pertains to Polla Project which was completed in the year 2020 under Batch-V (2013). The study aimed to know the changes in bio-physical indicators viz; Land Use/Land Cover (LU/LC) and Normalized Difference Vegetation Index (NDVI) due to the implementation of watershed programs from 2013 to 2020 using Remote Sensing and Geographical Information System (GIS). Satellite remote sensing provides an excellent source of data from which updated Land Use/Land Cover changes can be extracted efficiently. This is the most effective method which has been adopted by many researchers [3,4,5]. This method involves the development of spatial and temporal databases and analysis techniques. In Polla, several natural resources (soil and water conservation) and production system improvement (PSI) activities were taken up during the project period. These programs were likely to increase the area under cultivation, decrease the area in the wasteland, conversion of annual cropland to horticulture, and change water body areas and biomass.

2. MATERIAL AND METHODS

2.1 Study Area:

Polla Watershed is a part of Seethampeta Mandal in the DPAP block of Srikakulam district, Andhra Pradesh. The watershed is located between latitude 18°04'59" and longitude 84°03'49" at ridge point and between latitude 18°04'02" and longitude 84°05'76" at valley point. It is at a distance of 17.00 km. from its mandal headquarters and 67.50 km from the district headquarters. The watershed is located at an elevation of 700 m above MSL. The highest point in the watershed is 1000 m above the MSL. The total geographical area of the watershed is 4956 Hectares (Ha). The average annual rainfall (five years) in the area is 1050 mm. The temperature in the area is in the range between 42°C during summer and 30°C in winter. The soils of the project area are fertile red sandy to red sandy clay loam with medium water holding capacity. There are 22 habitats in the cluster spread over 6 micro watersheds. The main occupation of the watershed community is rainfed agriculture which is vulnerable to drought, failure of monsoon and affected by cyclones (Source: Detailed Project Report submitted to State Level Nodal Agency, PR&RD, 2013-14).

2.2 Biophysical Indicators

The biophysical indicators viz; Land Use and Land Cover (LULC), Normalised Difference Vegetation Index (NDVI) and Normalised Difference Water Index (NDWI) are studied with the help of Remote Sensing and GIS techniques. Based on data availability, on cloud-free days for pre and post-project periods, terrain-corrected Resource Sat-2 LISS-IV for the years 2013 and 2020 have been used for the study. Survey of India (Sol) topographical sheets of

1:50,000 scale, ground truth data and PMKSY monitoring reports from Panchayat Raj and Rural Development, Government of Andhra Pradesh have been used for reference. Land Use and Land Cover change analysis were carried out utilizing onscreen visual interpretation technique, using pre-Resources Sat-2 LISS-IV images and ArcGIS 10.8 background. Similarly, the post-LULC layer has been generated by overlying the pre-LULC layer onto the post-Resource Sat-2 LISS-IV images and identifying the changes and editing [6]. Normalized Difference Vegetation Index (NDVI) is calculated with the equation; $NDVI = (NIR - RED) / (NIR + RED)$ where NIR represents the reflection of the near-infrared spectrum and RED represents the reflection in the red range of the spectrum. The NDVI is a basic indicator of green vegetation. Normally it is generated to understand vegetation that changes depending on seasonal variations and also to monitor different growth phases of crops to analyze primary productivity [7]. The NDVI images for pre and post-project have been generated using Erdas Image 2015 software. Normalized Difference Water Index (NDWI) is used to identify water features from land and vegetation. It is calculated with the formula $NDWI = (Green - NIR) / (Green + NIR)$. The NDWI values range from -1 to +1. Negative values correspond to nonwater features such as drylands, rocky areas and barren land and positive values represent water features and wet surfaces.

2.3. Data used

The temporal satellite data is used for monitoring the watersheds. The study is executed using the following data sets: LISS-IV satellite data (Pre- & Post-treatment); Fusion (LISS IV + Cartosat-2) data; Survey of India (Sol) topo sheets for reference; PMKSY monitoring reports from the department.

2.4 Indicators considered for Evaluations of Watershed

To analyze the changes taking place during the project period, the following indicators are adopted: Vegetation cover; Water body area; Shift from annual crops to plantation crops; Additional area brought under cropping.

2.5 Major Developmental activities of the Watersheds

The developmental works are the construction of structures like Loose Boulder Structure, Rock fill dams and check walls for soil conservation; Percolation tanks; mini percolation tanks, Water absorption trenches at foothill for water conservation; Other works like drainage line treatment, Nala bank stabilization, filter strips etc., have also been developed.

3. RESULTS AND DISCUSSION

3.1 Changes in Land use / Land cover

Spatial distribution LULC categories and area statistics are shown below in Figures 1(a) to 1(e) and Table 1.

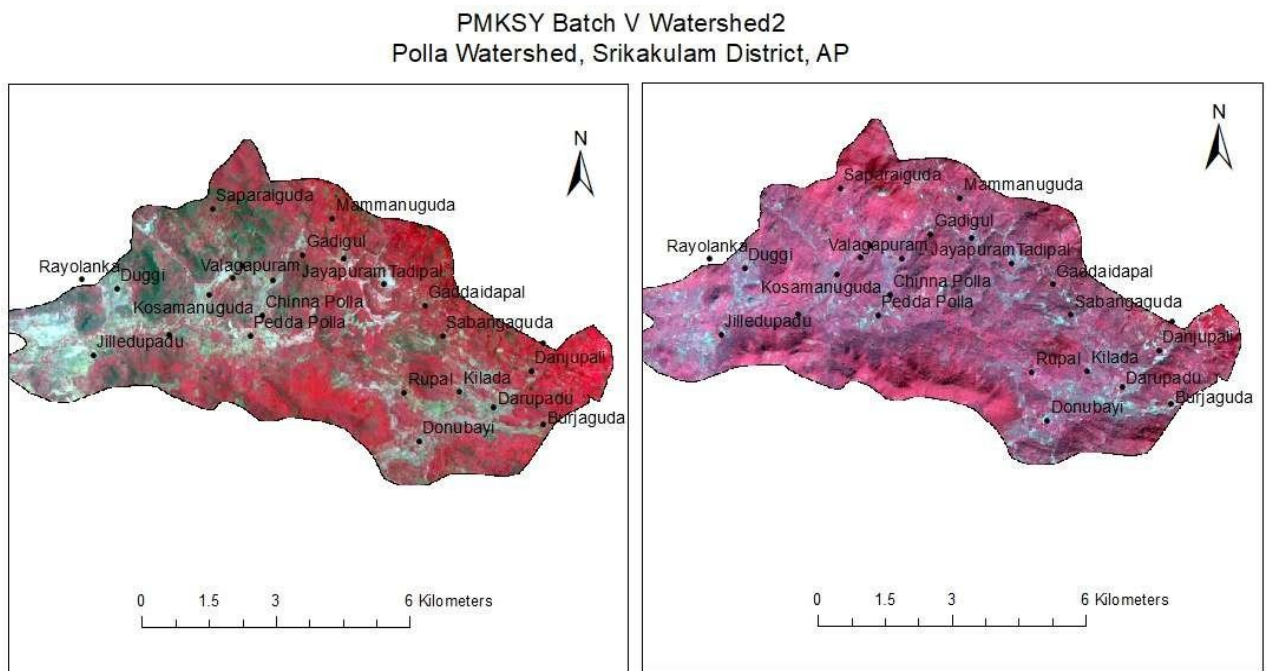


Fig 1(a): Pre and Post LISS-IVimages of Polla Watershed

Fig. 1(a) represents the pre and post-LISS-IV images of the Polla watershed which were utilized for detecting the changes in land use pattern. Fig 1(b) indicates the changes that occurred during the project period in the operational area due to the implementation of various soil and water conservation techniques. The land use pattern viz; built-up area, cropland, forest area, plantation area, scrubland/fallow land and waterbodies indicated by different colours in map helps to detect the change in land use pattern through technical processing of Remote sensing imageries. Fig. 1(c) reveals an interchange of land use categories whereas the IRSR2 LISS-IV image (fig.1(d)) shows the change from cropland to water bodies in the Duggi area of the project while fig. 1(e) exposes the change from scrubland/fallow land to cropland near the Kosamanuguda area of the Polla watershed [13,14].

PMKSY Batch V Watershed2
Polla Watershed, Srikakulam District, AP

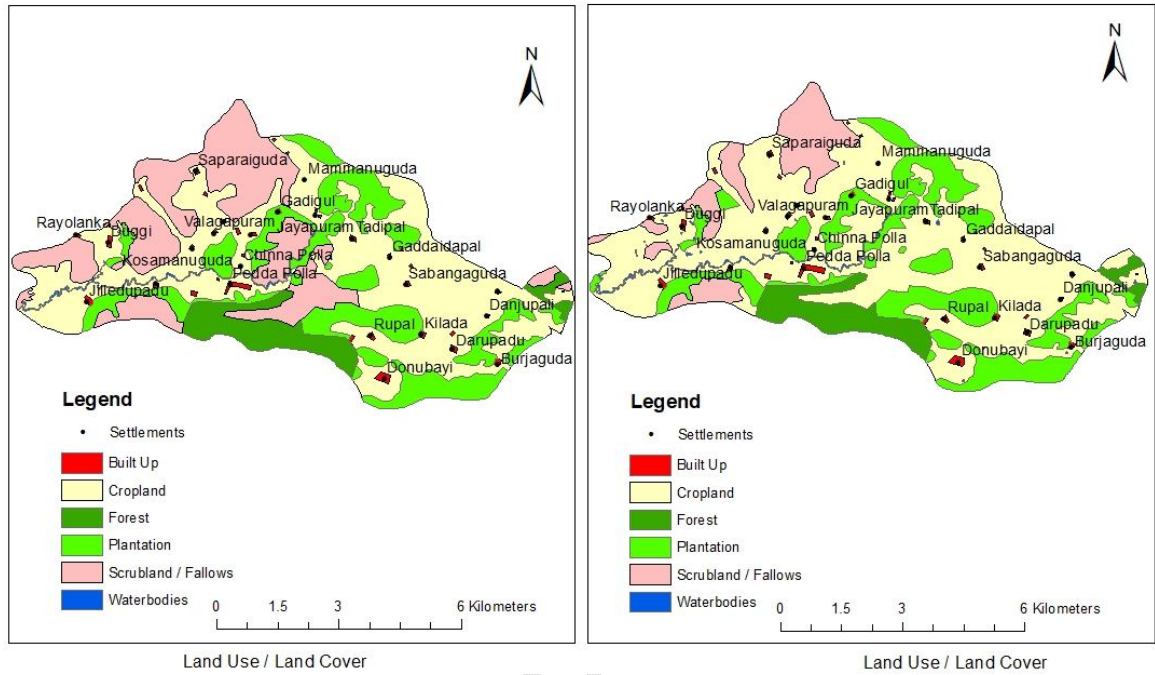


Fig 1(b): Change Detection-Land Use Land Cover

Table 1: Change in LULC in Polla Project from 2013 to 2020

S.No.	LULC category	Pre-project	Post project	Difference	Difference in %
		Area in Ha			
1	2	3	4	5 (4-3)	6
2	Built-Up	54.24	54.24	0.00	0.00
3	Cropland	2314.74	3071.08	756.34	32.68
4	Forest	363.81	363.81	0.00	0.00
5	Plantation	1136.46	1161.01	24.55	2.16
6	Scrub/Fallow	1318.17	531.58	-786.59	-59.67
7	Waterbodies	33.28	38.97	5.69	17.10
	Total Watershed Area	5220.70	5220.70		

The data (LULC maps and table) indicate a significant decrease (59.67%) in scrubland/fallow and an increase in cropland (32.68 %), plantation (2.16%) and waterbodies (17.10%). The waterbodies indicate water features, surface waters and wet surfaces which are resultant of existing natural streams, and rainfall. This could be attributed to the improvement of land

quality of wasteland after the implementation of Integrated Watershed Management Practices (IWMP) in the study area which was brought under cultivation [8,9,13,14].

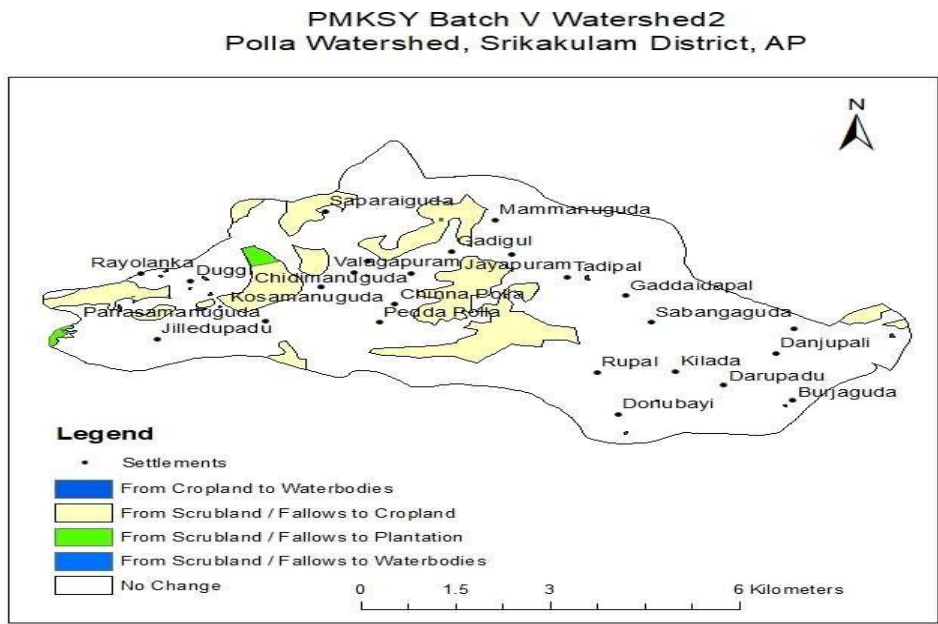


Fig 1(c): Land Use Change Map

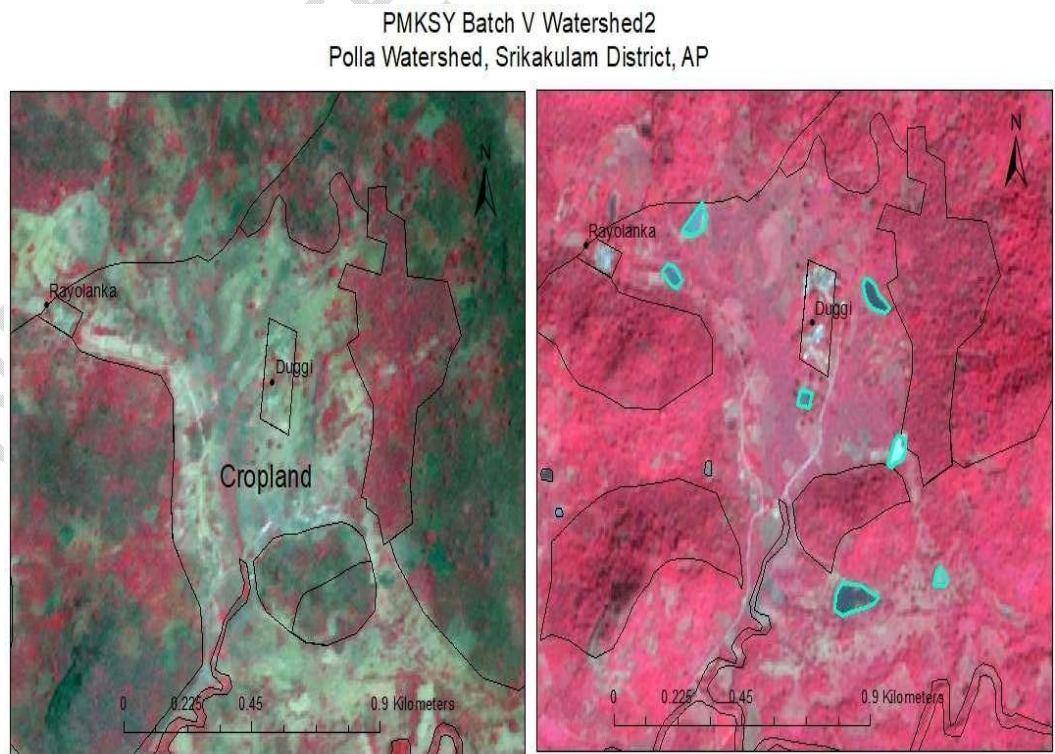


Fig. 1(d). Pre and Post IRS2 LISS-IV images showing land use change

PMKSY Batch V Watershed2
 Polla Watershed, Srikakulam District, AP

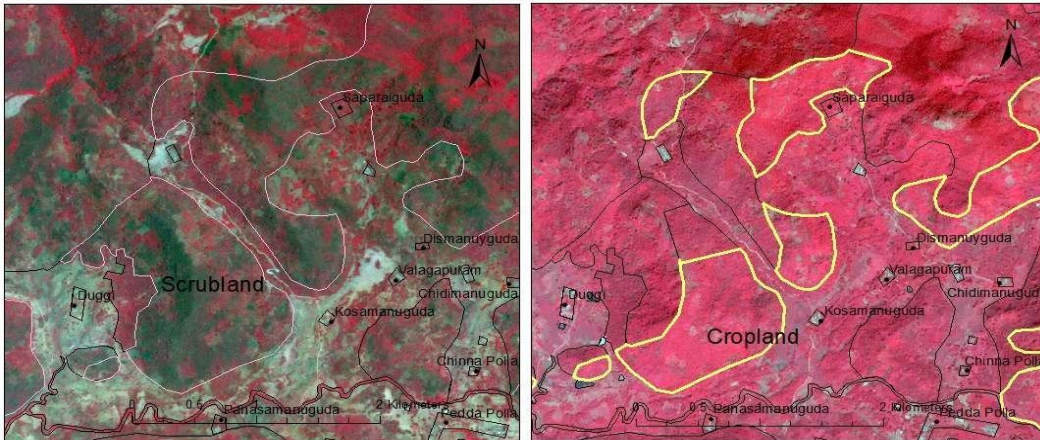


Fig. 1(e). Pre and Post IRSR2 LISS-IV images showing land use change

3.2 Changes in Normalized Difference Vegetation Index

The NDVI images were generated for pre-project (2013) and post-project (2020) and based on NDVI values, the project area was classified into four vegetation vigour classes, namely, nil vegetation, low vegetation, medium vegetation and dense vegetation. The results are presented in fig. 2 and Table 2.

PMKSY Batch V Watershed2
 Polla Watershed, Srikakulam District, AP

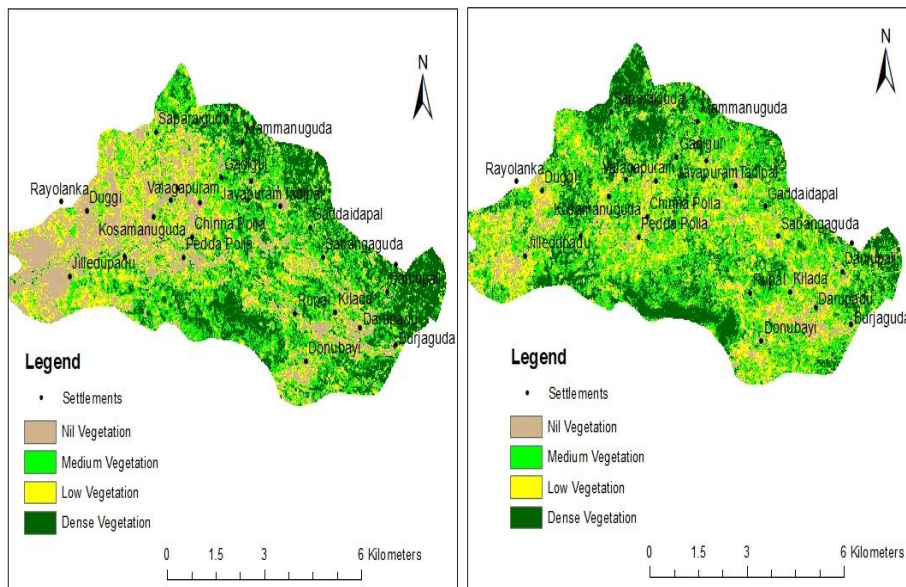


Fig. 2. Pre and Post NDVI images

Table 2: Change in Vegetation cover (NDVI) in Polla Watershed from 2013 to 2020

S.No.	NDVI Classes	Pre-project	Post project	Difference	Difference in %
		Area in Ha			
1	2	3	4	5 (4-3)	6
1	Nil Vegetation	1223.22	513.89	-709.33	-57.99
2	Low Vegetation	1288.15	1536.08	247.93	19.25
3	Medium Vegetation	1452.69	1864.73	412.04	28.36
4	Dense Vegetation	1256.63	1305.99	49.36	3.93
5	Total Watershed Area (TWA)	5220.70	5220.70		

It is clear from the pre and post-NDVI data that there is an increase in dense vegetation (3.93 %), medium vegetation (28.36 %), Low Vegetation (19.25 %) and there is a decrease in nil vegetation (-57.99 %). The increase in this vegetation may be due to a lot of greenery created around water bodies like rockfill dams, percolation tanks, mini percolation tanks, loose boulder structures etc. which are also reflected in low and medium vegetation [13,14].

3.3 Changes in Normalized Difference Water Index

Changes in water body area (NDWI) is a good indicator of rainwater harvesting activities taken up in the project area. The increase in waterbodies by 0.30 ha (107.14 %,) as furnished in (Table 3) may be due to the construction of rainwater conservation structures like percolations tanks, rockfill dams, mini percolation tanks and loose boulder structures etc. (Table 4) during the project implementation period. Due to the effective execution of IWMP interventions in watershed programs, an overall positive impact was brought out in the study area [10,11]. Biophysical indicators of watershed impact evaluation in rainfed areas are highly sensitive to weather conditions, mainly rainfall. Even one rainfall event makes a huge difference in the analysis of vegetative cover and water spread area in the waterbodies and water features [12-14].

Table 3: Change in waterbodies

NDWI Classes	Pre-Project Period (Area ha)	Post-Project Period (Area ha)	Difference (ha)	% difference
Water bodies	0.28	0.58	0.30	107.14

Table 4: Rain Water Conservation Works taken up in Polla Project Area from 2013 to 2020

S.No.	Rainwater conservation works	No. of Works
1	Rockfill Dams	10
2	Percolation Tanks	21
3	Mini Percolation Tanks	20
4	Water absorption trenches at foothills	1
5	Loose Boulder Structures including wire mesh	26
6	Gabion SMC	9
7	Check walls	3

4. CONCLUSION

The evaluation of the watershed project implementation program using Geospatial Technology (Remote Sensing and GIS) has shown a positive impact which is reflected by the fact that scrubland/fallow land has decreased by 59.67 % and cropland and plantations have increased by 32.68 % and 2.16 % respectively due to the watershed developmental activities. Another positive indicator of watershed development is the increased availability of water due to the construction of rainwater harvesting structures like rockfill dams, percolation tanks and mini percolation tanks. Biophysical indicators of watershed impact evaluation in rainfed areas are highly sensitive to weather conditions, mainly rainfall. Even one rainfall event makes a huge difference in the analysis of vegetative cover and water spread area in the waterbodies and water features [10,12].

COMPETING INTERESTS DISCLAIMER:

Authors have declared that they have no known competing financial interests OR non-financial interests OR personal relationships that could have appeared to influence the work reported in this paper.

REFERENCES

1. Ratna Reddy, V. and J.S. Geoffrey, Integrated Assessment of scale impacts of watershed intervention assessing hydrogeological and biophysical influences on livelihoods. Elsevier Inc. Publication 2015.
2. GOI, Common guidelines for planning and implementation of the watershed development program in India 2008.
3. Thakkar, A.K., V.R. Desai, A. Patel, and M.B. Potdar, Application of Remote Sensing in Analysis of Impact Assessment using Biomass Vigour changes of Watersheds. Journal of Environmental Biology 2017;38:543-551.

4. Bhandari, A., A. Kumar, and G.K. Singh, Feature extraction using normalized difference vegetation index (NDVI): A case study of Jabalpur city. *Procedia Technology* 2012; 6:612-621.
5. Nagaveni, C. and M. Venkata Ravibabu, Impact Assessment of Watershed Management on Land Use/Land Cover change using RS and GIS: A Case Study. *International Journal of Civil Engineering and Technology* 2017;8:394-400.
6. NRSC, User manual National Land Use Land Cover Mapping using Multi-temporal Satellite Data, NRSC, ISRO, Hyderabad 2012; 4
7. Vani, V. and K. Pavan Kumar, Crop condition assessment of groundnut using time series NDVI data in Anantapur district, Andhra Pradesh. *Journal of Rural Development* 2018;37(2)167-178.
8. Garima Sharma. and R.N. Sharma, Application of GIS and Remote Sensing for Impact Assessment of Integrated Watershed Management Program: A Case Study of Bassi Block, Jaipur District. *International Journal of Scientific and Technology Research* 2020;9(1):983-989.
9. Biswajit Mandal, S., Alka Singh., S.D. Singh, B.S. Kalra., P. Samal, M.K. Sinha., Ramajayam, D. and Suresh Kumar, Augmentation of water resources potential and cropping intensification through watershed programs. *Water Environment Research* 2018:83-91.
10. Painuli D.K., R.R. Goyal., R.R. Bhagawan Singh., Rajwant Kaur Kalia. and M.M. Roy, Impact evaluation of watershed programs in Jaisalmer District of Rajasthan. Central Arid Zone Research Institute, Jodhpur, India, (Report) (2014).
11. Ameer K. Thakkar., R. Venkatappayya., Ajay.Desai., Patel Madhukar. And B. Potdar, Impact assessment of watershed management program on land use/land cover dynamics using Remote Sensing Applications: *Society and Environment* 2017; 5:1-15.
12. Gopal Kumar, Sena., D.R. Kurothe., R.S V.C. Pande., B. K. Rao., A.K. Vishwakarma., G.L. Bagdi. and P.K. Mishra, Watershed impact evaluation using remote sensing. *current science* 2014;106(10):1369-1378.
13. Venkataramamuni Reddy P., Sasidhar Kona., C.P. Reddy., R.V. Sagar Kumar Reddy. and B. Janardhan Reddy, Evaluation of watershed projects in YSR Kadapa District of Andhra Pradesh using remote sensing and GIS technologies. *The Journal of Research ANGRAU* 2022; 50(3): 38-51.
14. Venkataramamuni Reddy P., Sasidhar Kona., C.P. Reddy., R.V. Sagar Kumar Reddy. and B. Janardhan Reddy, Evaluation of watershed development programme in Prakasam district of Andhra Pradesh using Remote Sensing and GIS Technology. *International Journal of Environment and Climate Change* 2022;12(12):1488-1496.