

Analysis of molecular data of some species of genus *Junonia* butterfly using RAPD technique

ABSTRACT

The present investigation was carried out to find out similarities and diversities between four species of the genus *Junonia* belonging to Nymphalidae, the largest family of butterfly. The genomic DNA eluted from the species, *J. lemonias*, *J. alamana*, *J. hierta* and *J. orithiya* were screened by nine universal primers OPA-1, OPA-2, OPA-3, OPA-4, OPA-5, OPP-9, OPP-18, OPN-17, OPN-16 through RAPD - PCR. Primer OPN-17 did not produce any bands, whereas, the discrete banding pattern was observed in the remaining 8 primers. Primer OPP-18 distinctly highlights only species-specific bands ranging below 200 base pairs. Primer OPA-2 that produced significant banding patterns was taken into consideration for further analysis. The dendrogram was constructed by using binary data interpreted from the RAPD gel image. Two clades were obtained, where in one clade taxa *J. hierta* and *J. lemonias* cluster as sister taxa, and in the other clade taxa *J. alamana* and *J. orithiya* cluster as sister taxa. The investigation was supported by the Jaccard similarity and distance indices matrix and Principal component analysis. The interpretation from obtained dendrogram and distance matrix reveals that there is closeness within two species in their genetic makeup, whereas some genetic characters are expressed as species-specific. Henceforth, these patterns produced by respective primers can be considered as diagnostic bands and may contribute to molecular markers for *Junonia* species identification. Thus, in related evolutionary studies whenever be under investigation these markers will play a pivotal role in concluding the direction of evolution.

Keywords: *Junonia*; DNA; RAPD-PCR; Polymorphism; Dendrogram; PCA; Molecular Marker.

INTRODUCTION

Butterflies the most magnetic and captivating colourful creatures belong to the largest order-lepidoptera under class- Insecta. Nymphalidae also known as brush-footed or four-footed butterflies is the largest family of butterfly. Out of 18,000 species of butterflies found worldwide, 6000 species belong to nymphalidae and 521 nymphalidae inhabit India [1]. Butterflies are key taxa for monitoring biodiversity as their population is susceptible to alternation in surrounding habitat specifically leading to the loss of species with restricted geographical distribution [2, 3]. To keep a check on the richness or destruction caused to the environment there arises an urgency to conserve butterflies [4]. Molecular-based work started by William [5] is since then continued and applied in various fields like forensic investigation [6]; linkage map construction to state phylogenetic relations and morphological evolution among Nymphalidae subfamily. Phylogenetic studies of taxa that exhibit adaptive phenotypic variation provide valuable insights into the evolutionary mechanisms driving the origins of biodiversity [7]. Butterfly species richness studied by Principal component analysis (PCA), is a powerful tool for analysing data that displays similarity between observation and variables as points in spot maps [8, 9]. The main aim of the investigation is to study species-specific genetic characters and closeness within two species in their genetic makeup supported by PCA.

MATERIALS AND METHODS

Collection and Identification of butterflies

Nymphalidae butterflies were collected from a different region of Amravati by sweep netting and hand-picking by observing their preliminary morphological data and later their taxa were identified by observing key characters as mentioned in Books of Indian Butterflies [1, 4, 10].

36 **Preservation of specimen**

37 The butterfly legs and thorax tissues were preserved in 70% alcohol [11] before ~~post-mortal~~  
38 [post-mortal](#) changes.

39  
40 **Extraction of DNA**

41 Genomic DNA was extracted from freshly collected leg tissues of butterflies by using Genetix DNA sure  
42 Tissue Mini Kit and stored at 4<sup>0</sup>C for further use. Later it was quantified by using UV spectrophotometry  
43 and gel electrophoresis.

44 **Amplification of genomic DNA through [the](#) RAPD-PCR method**

45 Genomic DNA ~~were~~[was](#) amplified in thermocycler gradient by using [an](#) RAPD marker with primer  
46 ranged from OPA 1 to OPA 5, OPN 16, OPP 9 & OPP 18. PCR proves to be [a](#) boon for molecular  
47 biologist as it is [an](#) indispensable technique in [the](#) biological and medical field and allows automated  
48 DNA sequencing, thus readily producing markers for further investigation [2]. Primers used with different  
49 percentage of base content are highlighted in Table 1.

51 **Table 1. Primers used for RAPD-PCR profiling of Nymphalidae butterflies**

Primers	Primer Sequence (5'to 3')	% Of GC content	Molecular weight (bp)
<b>OPA 1</b>	CAGGCCCTTC	70%	2964
<b>OPA 2</b>	TGCCGAGCTG	70%	3044
<b>OPA 3</b>	AGTCAGCCAC	60%	2997
<b>OPA 4</b>	AATCGGGCTG	60%	3068
<b>OPA 5</b>	AGGGGTCTTG	60%	3099
<b>OPP 9</b>	GTGGTCCGCA	70%	-
<b>OPN 16</b>	AAGCGACCTG	60%	-
<b>OPP 18</b>	GGCTTGGCCT	70%	-

52 PCR conditions were as follows [Table 2] and the amplicons gained were stored at 4<sup>0</sup>C. **Table 2. PCR**

53 **conditions for amplification of Nymphalids DNA**

<b>Stage</b>	<b>Temperature</b>	<b>Duration</b>
<i>Pre-denaturation</i>	94 <sup>0</sup> C	5 min
<i>Denaturation</i>	94 <sup>0</sup> C	1 min
<i>Annealing</i>	37.6 <sup>0</sup> C	1 min
<i>Extension</i>	72 <sup>0</sup> C	1 min
<i>Final extension</i>	72 <sup>0</sup> C	5 min
<b>Total Cycles</b>	<b>35</b>	

54

55 The PCR product was run at 100 volts on 2% agarose gel for 3-4 hours. 10 µl amplicon along with 1µl  
56 of DNA loading dye were separated on [a](#) gel plate stained with Ethidium Bromide and loaded with 1kb  
57 DNA marker. Bands on the gels were viewed under Imaging System Unit and photographed for  
58 further analysis.

59  
60  
61  
62  
63  
64  
65  
66  
67  
68  
69  
70  
71  
72  
73  
74  
75  
76  
77  
78  
79  
80  
81  
82  
83  
84  
85  
86  
87  
88  
89  
90  
91  
92  
93  
94  
95  
96  
97  
98  
99  
100  
101  
102  
103  
104  
105  
106  
107  
108  
109  
110  
111  
112

### Bioinformatics aspect

Bioinformatics is an interdisciplinary research area that is the interface between the biological and computational sciences. It is the application of computer technology to the management and analysis of biological data, as a result, computers are being used to gather, store, analyse, and merge biological data[12].

### Application of MEGA-5 for analysis of brushfooted butterflies RAPD-PCR data

A computer program package called MEGA-5 is developed for estimating the evolutionary distance, reconstructing phylogenetic trees, and computing basic molecular data. For the estimation of characters-based distance, some methods like Jukes and Cantor [13] distance, Tamura [14] distance, p-distance, UPGMA, and Neighbor joining methods requires—require matrix of pair wise distance. MEGA is an integrated tool for conducting automatic and manual sequence alignment, inferring phylogenetic trees, mining web-based databases, estimating rates of molecular evolution, inferring ancestral sequences, and testing evolutionary hypotheses. MEGA is a multi-threaded Windows application. It runs on all releases of the Microsoft Windows operating system [15].

### Phylogenetic analysis

Phylogenetic trees are the most convenient way of visually presenting evolutionary relationships among a group of organisms. It can be drawn in various ways. The relationships established by phylogenetic trees describe a species evolutionary history and its historical relationships among lineages or organisms or their parts, such as their genes. In the construction of phylogenetic trees, the principle of minimum evolution or maximum parsimony is often used [16]. Different tree-building methods exist for the study of phylogenetic relatedness between DNA samples [17].

### Principal Component Analysis (PCA)

It is a multivariate technique that analyse data table that describes inter-correlated quantitative dependent variables. It is the mode of identifying a pattern in data, and expressing the data to highlight similarities and differences [9].

## RESULTS AND DISCUSSION

Preceding the amplification process of fragments of DNA, a data was scored in form of binary code, '1' for the presence and '0' for the absence of band for further RAPD analysis. Bands represents represent the genotypic characters. Nine primers were screened of that OPN 17 did not produce any bands. Remaining-The remaining 8 primers showed the different frequency-frequencies of combinations of monomorphic and polymorphic bands. Whereas;Whereas Primer OPP-18 distinctly highlights only species-specific bands ranging below 200 base pairs. Primer OPA 2 producing a significant banding pattern of the four *Junonia species* was taken into consideration for further investigation.

The similarity coefficient reveals maximum genetic similarity (0.3) between *J. alamana* and *J. orithiya* and minimum genetic similarity (0.066666667) between *J. lemonias* and *J. orithiya* [Table 3]. This data is strongly supported by Principal Component Analysis (PCA) dot map [Fig. 2], where *J. orithiya* is completely diverging out and is distantly located from *J. lemonias*.

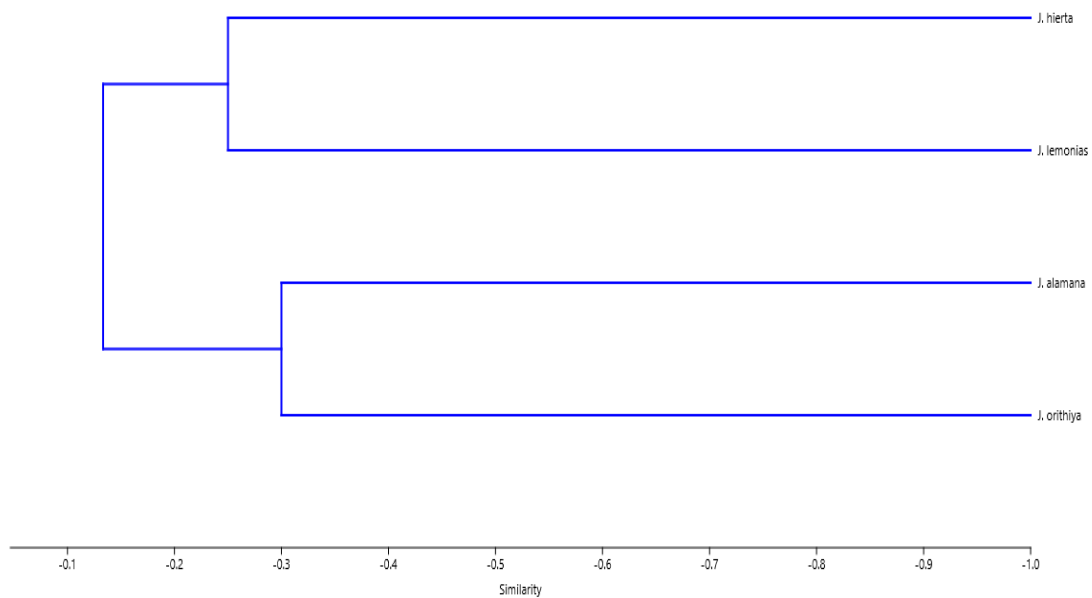
Dendrogram [Fig 1] created based on binary molecular data shows two clades, where in one clade taxa *J. hierta* and *J. lemonias* cluster as sister taxa, and in other-another clade taxa *J. alamana* and *J. orithiya* cluster as sister taxa. Henceforth, all the above analysis reveals that there is closeness within two species in their genetic makeup, whereas some genetic characters-characteristics are expressed as species-specific-species-specific. These patterns produced by respective primers can be considered as diagnostic bands and may contribute to molecular markers for *Junonia* species identification. Thus, related evolutionary studies whenever be—under investigation these markers will play a pivotal role in concluding the direction of evolution.

113  
114  
115

**Table 3: Distance matrix based on RAPD-PCR of four species of *Junonia***

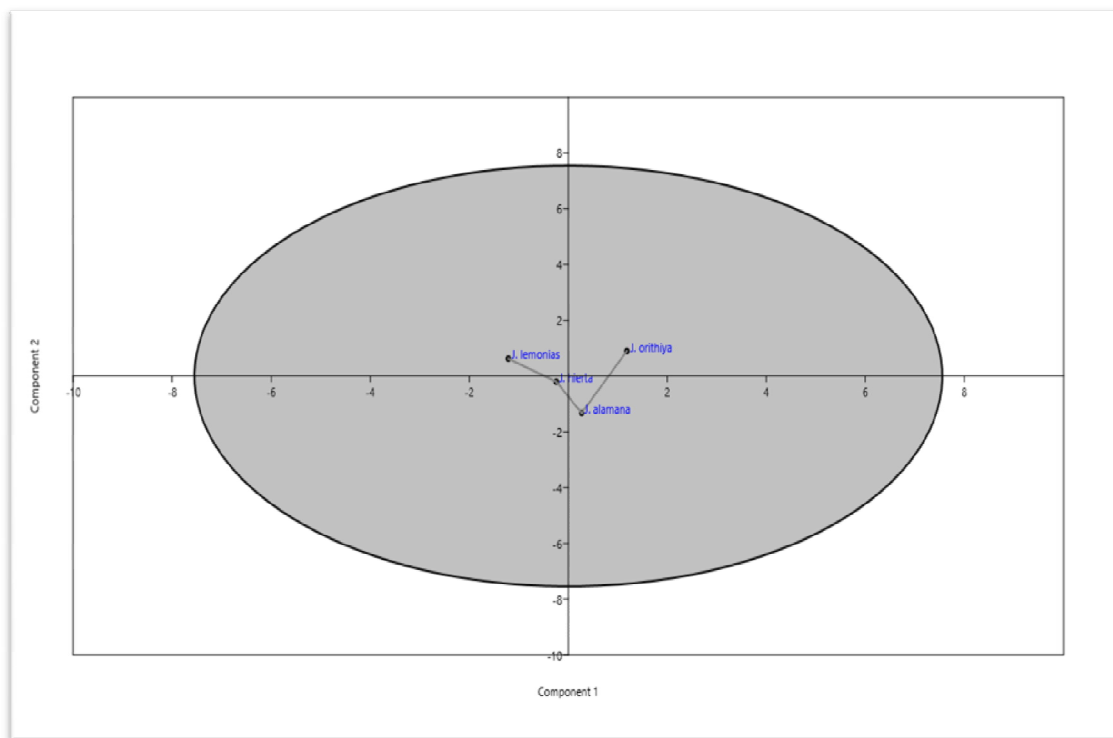
Species	<i>J. lemonias</i>	<i>J. alamana</i>	<i>J. hierta</i>	<i>J. orithiya</i>
<i>J. lemonias</i>	1			
<i>J. alamana</i>	0.1	1		
<i>J. hierta</i>	0.25	0.16666667	1	
<i>J. orithiya</i>	0.066666667	0.3	0.2	1

116  
117



118  
119

**Fig 1: Jaccard Similarity coefficient of four species of *Junonia***



120

121 **Fig. 2: Principal Component Analysis (PCA) of four species of *Junonia***

122

123

## CONCLUSION

124

125

126

127

128

129

All the primers produced a large number of bands with different intensities and banding patterns suggested that the amplified fragments were repeated in the genome in varying degrees. Results suggested that the RAPD-PCR technique could provide a powerful tool to improve species identification and to better understand genetic variability and the point where divergence is occurring within the genus. Presence of species-specific bands among some species suggested the interspecific genetic relatedness between them.

130

131

## REFERENCES

132

133

134

135

136

137

138

139

140

141

142

143

144

145

146

147

1. Kehimkar, Isaac. (2008): *The Book of Indian Butterflies*. Bombay Natural History Society, India.
2. Hill JK, Hamer KC, Tangah J, Dawood M. (2001). Ecology of Tropical butterflies in rainforest gaps. *Oecologia*, 128: 294-302.
3. Saikia M K\*, Kalita J, Saikia PK. (2009): Ecology and conservation needs of nymphalid butterflies in disturbed tropical forest of Eastern Himalayan biodiversity hotspot, Assam, India. *International Journal of Biodiversity and Conservation* Vol. 1(7) pp. 231-250.
4. Wynter-Blyth MA. (1957): *Butterflies of the Indian Region*. Bombay Natural History Society. 523 p.
5. Williams JGK, Anne R, Kubelik, Kenneth J, Livak, J, Antoni Rafalski, Tingey Scott V. (1990): DNA polymorphisms amplified by arbitrary primers are useful as genetic markers. *Nucleic Acids Research* 18(22): 6531-6535.
6. Chattopadhyay P. (2003). RAPD markers system as a useful tool for rapid identification of the origin of lizard contaminants in food. *Food Chem Toxicol.*; 41(12): 1719-25.
7. Zhang *et al.*, (2008): Phylogenetic relationship and morphological evolution in the sub family Limenitidinae (Lepidoptera: Nymphalidae). *Progress in Natural Science* 18.1357-1364.

- 148  
149  
150  
151  
152  
153  
154  
155  
156  
157  
158  
159  
160  
161  
162  
163  
164  
165  
166  
167  
168  
169  
170  
171  
172
8. Kasangaki P, Akol AM, Basuta GI. (2012). Butterfly Species Richness in Selected West Albertine Rift Forests. *International Journal of Zoology*. Volume 2012, Article ID 578706, 7 pages. Doi:10.1155/2012/578706.
  9. Mishra S, Sarkar U, Taraphder S, Datta S, Swain D, Saikhom R. et al. (2017). Multivariate Statistical Data Analysis- Principal Component Analysis (PCA). *International Journal of Liestock Research*. 7(5), 60-78. <http://dx.doi.org/10.5455/ijlr.20170415115235>
  10. Evans WH. (1932). *The Identification of Indian Butterflies*. Bombay Natural History Society, India.
  11. Vanlalruati C, Zothansangi, Gurusubramanian G, Senthil Kumar N. (2011) Morphological and molecular studies of six *Junonia* species of butterflies using RAPD-PCR technique. *Sci Vis* 11 (3), 141-146 July-September, 2011.
  12. Mullis KB. (1990): The Unusual Origin of the Polymerase Chain Reaction. *SCIENTIFIC AMERICAN*. pages 56-65.
  13. Jukes TH, Cantor CR. (1969): Evolution of protein molecules. Academic Press, New York. Pp 21- 132.
  14. Tamura K. (1992): Estimation of the number of nucleotide substitutions when there are strong transition - transversion and G+C content biases. *Molecular Biology and Evolution* 9(4):678–687.
  15. Tamura K, Peterson D, Peterson N, Stecher G, Nei M and Kumar S\*. (2011): MEGA5: Molecular Evolutionary Genetics Analysis Using Maximum Likelihood, Evolutionary Distance, and Maximum Parsimony Methods. *Mol. Biol. Evol.* 28(10):2731–2739. doi:10.1093/molbev/msr121.
  16. Swofford DL. (2002): PAUP\*. Phylogenetic Analysis Using Parsimony (\*and other methods). Version 4. Sunderland, Massachusetts: Sinauer Associates.
  17. Li WH. (1997): *Molecular Evolution*. Sunderland, MA: Sinauer Associates.