

Original Research Article

Effect of Girdling and Paclobutrazol on Growth, Plant Physiology, Inflorescence and Fruiting of *Mangifera indica* cv. Harumanis in Agroclimatic-zone 3 of Peninsular Malaysia

ABSTRACT

Aims: This experiment aimed to study the effect of girdling, paclobutrazol application, combined methods, and untreated trees on physiological response, vegetative and reproductive growth, and fruiting.

Place and Duration of Study: This study was carried out from August 2021 to June 2022 at MARDI, Serdang, Selangor, using five years of open-field *Mangifera indica* cv. Harumanis trees.

Study design: ~~The study was arranged in the frame of A randomized complete block design with three replications where each replication had 3 and three samples per treatment; ANOVA and DMRT at p=0.05 were used for significance and post hoc comparison, respectively, and differences between treatments were analysed using analysis of variance (ANOVA) using DMRT at P=0.05.~~

Methodology: Each replication consists of: T1- No induction (Control); T2- girdling at primary branches; T3- soil drenching at 4 ml/l PBZ and T4- girdling at primary branches + soil drenching at 4 ml/l PBZ. The girdling process was performed by removing a 10 mm width ring of bark at all primary branches. Paclobutrazol (25% active ingredient) of the commercial product was used. The treatments were performed concurrently on 1st December 2021 at the same morphological size as the tree subjected to similar light exposure.

Results: The combination method of girdling and paclobutrazol application had the most significant adverse effect on internode length. Nevertheless, no significant difference was observed in plant stem diameter, height, number of primary and secondary branches, and number of shoots generated from all treatments. The combined method reflected a significant reduction in stomatal conductance, rate of photosynthesis, and transpiration rate. However, the intercellular CO₂ concentration of this combined method and untreated tree is significantly higher. Flowering appears on the leaf buds 90 days after the treatment for paclobutrazol application and the combined method. These methods also resulted in yield per fruit and yield per tree.

Conclusion: Based on the results, the combination method of girdling and paclobutrazol application was effective to reduce vegetative growth, suppress physiological capacity, yet the most effective to produce flowering and fruit yield.

Keywords: *Fruiting, girdling, growth, inflorescence, Mangifera indica* cv. *Harumanis, paclobutrazol, plant physiology, Peninsular Malaysia*

1. INTRODUCTION

Harumanis continues to receive a sustained increasing demand annually [1]. The hectareage of Harumanis is currently at 1,575 hectares, and the yield production area is at 1,334.62 hectares, with the majority being found in Perlis and Kedah. Economically, the production value of Harumanis was RM66.72 million in 2020 [2]. However, Harumanis production is still

unable to meet domestic demand, not to mention the previous export to Singapore and Japan has been halted since 2019 due to production limits [3,4].

In Peninsular Malaysia, there are three designated agro-climatic zones divided by elemental climatic data such as averaged minimum and maximum temperature, mean rainfall, number of rain days, humidity, and length of dry season per year [5]. The first region is agro-climatic zone 1 (ACZ1), a region with predictable clear dry seasons lasting up to four months [6]. ACZ1 represented only a small part of the area (Figure 1), which includes Perlis, the northern part of Kedah, Kuala Sedeli, Johor, Marang, Kuala Nerus, and Kuala Terengganu, Terengganu [7]. Some locals say, Harumanis grown in ACZ1 will result in higher yields and better quality [8]. The second region is agro-climatic zone 2 (ACZ2), with a short, fairly regular dry season ranging from one to two months. Production of Harumanis in ACZ2 located in Jelebu, Negeri Sembilan, produced low yield in comparison to those planted in ACZ1 [9]. The third region is agro-climatic zone 3 (ACZ3), a region without a regular dry season. Attempts to produce Harumanis inside ACZ3 in Serdang, Selangor, failed to flower, thus bearing fruit.

Mass production of Harumanis could not be expanded beyond ACZ1 due to its sensitivity to climate change, such as seasonal patterns, temperature, precipitation, relative humidity, photoperiod, water stress, and solar radiation [10]. Harumanis requires a significant prolonged dry season period to initiate flowering [8,11]. Besides requiring high temperatures for vegetative stages, low rainfall distribution is the most significant factor for reproductive stages in Harumanis that induce flowering, fruit set, fruit growth, and fruit development [12]. In contrast, high rainfall distribution with high humidity can force Harumanis to continuously grow and stay in its vegetative stage, adversely affecting on flowering and fruit development.

Two common agronomic practices to induce flowering and fruiting are girdling [13] and paclobutrazol [14]. Girdling involves the removal of a thin strip of bark tissue encircling a trunk or branch [15], thereby obstructing the downward translocation of photosynthates and metabolites through the phloem [16]. It induces an immediate effect to stop the movement of assimilates, resulting in an accumulation of carbohydrates produced from photosynthesis along the phloem [17]. Flowering is induced by the increased accumulation of carbohydrates and natural hormones beneath the girdle [18]. Paclobutrazol (PBZ) application on the soil inhibits the biosynthesis of gibberellin responsible for regulating growth and development [19]. It induces the production of abscisic acid that confers stress tolerance in crop plants [20,21]. Under extreme stress, where plants cannot survive as individuals, they need to flower and produce seeds to survive as a species. Flowering is a stress response and is considered the ultimate stress adaptation [22]. Furthermore, the application of PBZ increases leaf carbohydrate accumulation to induce flowering [23].

Hence, this experiment aims to determine the effects of untreated tree, girdling, paclobutrazol, and the combination of these methods on the growth, plant physiology, inflorescence, and fruiting of *Mangifera indica* cv. Harumanis in ACZ3. We hypothesized that combination of girdling and paclobutrazol would decrease growth, suppress plant physiology, induce inflorescence, and fruiting of *Mangifera indica* cv. Harumanis.

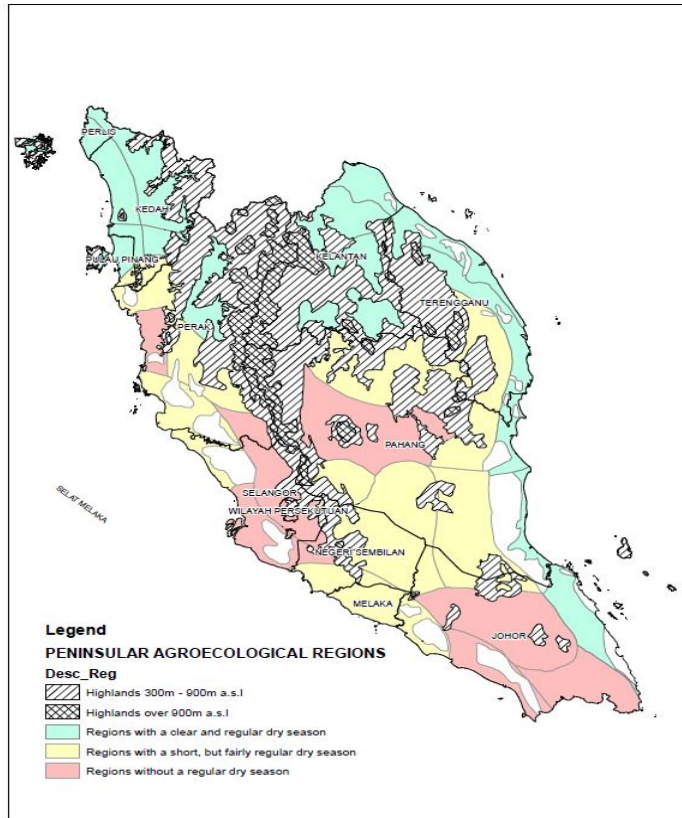


Figure 1. Agro-climatic zone (ACZ) map of Peninsular Malaysia

2. MATERIAL AND METHODS

2.1 Experimental Design and Treatments

The experiment was conducted using randomised complete block design (RCBD) with three replication where each replication had 3 samples per treatment. Each replication consists of the following treatments: T1- No induction (Control); T2- girdling at primary branches; T3- soil drenching at 4 ml/l PBZ and T4- girdling at primary branches + soil drenching at 4 ml/l PBZ. The girdling process was performed by removing a 10 mm width ring of bark at all primary branches. Paclobutrazol (25% active ingredient) of the commercial product was used. The treatments were performed concurrently on 1st December 2021 at the same morphological size as the tree subjected to similar light exposure.

2.2 Planting Materials

This study was carried out from August 2021 to June 2022 at MARDI, Serdang, Selangor, using five years of open-field *Mangifera indica* cv. Harumanis trees grown in sedentary soil (Figure 2) is described as sandy clay soil and spaced 4 m x 4 m apart. Thirty-six healthy trees of nearly uniform in shape and size receive the same fertilisation programme and other agricultural practices selected for this study.

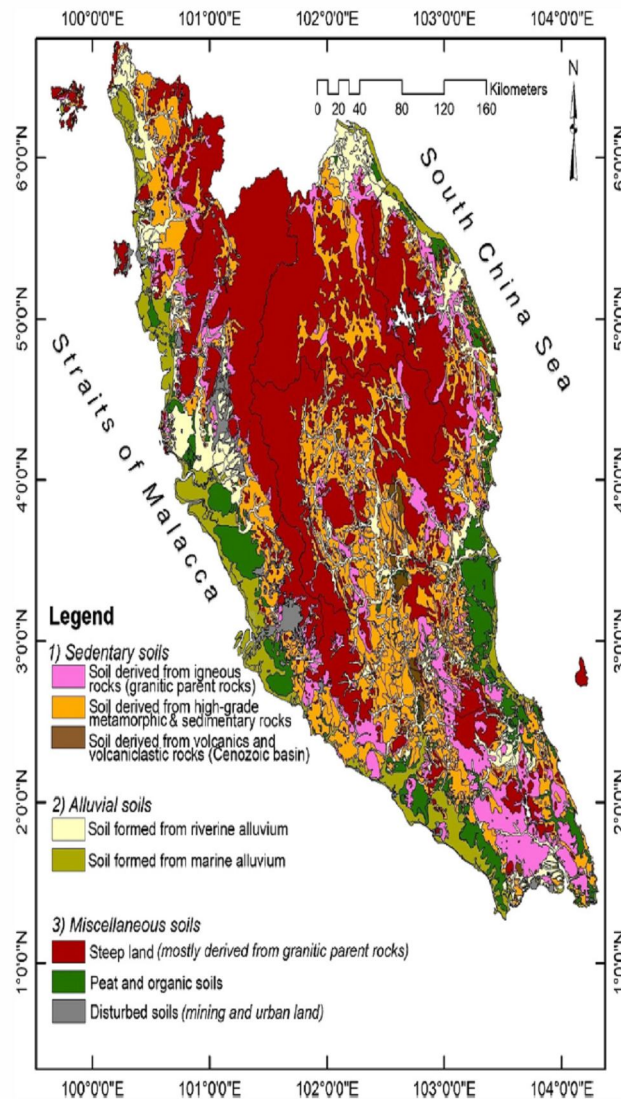


Figure 2. Simplified distribution and classification of soils in Peninsular Malaysia.

(Source: Map of soil types in Peninsular Malaysia, DOA, 2002.)

2.3 Maximum Temperature, Average Rainfall and number of Rainy Days

This study collected meteorological information on the number of rainy days, maximum temperature (°C), and average rainfall (mm). Based on the data availability, the iMetos 2 weather station, Pessl Instruments (Austria) was utilised to analyse the climate change parameters (monthly time series) from August 2021 to June 2022.

2.4 Vegetative Growth

The height, the number of primary and secondary branches, stem diameter, the number of shoots, and internode length of the plant were determined by measuring the vegetative growth after the treatment was applied for 90 days. A measuring tape was used to measure the plant height – the distance from the highest shoot tip to the soil's surface. Meanwhile, a pair of the digital caliper was used at the base of the stem to measure the stem diameter. The branches attached to the stem were enumerated to obtain the number of primary branches, whereas the secondary branches were recorded as the number of branches attached to the primary branches. The fully expanded leaves and shoots were counted to determine the number of shoots. Lastly, a measuring tape was applied to measure the internode length.

2.5 Plant Physiology

A portable photosynthesis system (LI-6400XT; LI-COR, Lincoln, NE, the United States) was used to compute the intercellular CO₂ concentration (C_i), transpiration rate (Tr) photosynthetic rate (P_n), and stomatal conductance (g_s). A portable fluorescence system PAM-2500 Chlorophyll Fluorometer (WALZ, Effeltrich, Germany) was utilised to measure the Chlorophyll fluorescence parameters, whereas a SPAD502 metre (Konica Minolta Optic Inc., Tokyo, Japan) was applied to measure the relative chlorophyll content. All the measurements were recorded on the 5th completely expanded leaves at the plant apex from 8:00 to 10:00 a.m. on the 4th-week post-treatment.

2.6 Reproductive Growth

Reproductive growth was measured starting from the flowering phase, and the collected data comprised the percentage of inflorescence trees (%) and time to inflorescence (days). The time to inflorescence was measured from the day the tree was treated until it produced flowers. The percentage of inflorescence trees was calculated by dividing the percentage of inflorescence produced by the number of shoots produced by each tree.

2.7 Fruit Yield

The diameter, weight, and length of each fruit were measured to determine the overall fruit yield. At a 12-week post-treatment of the fruit set, the fruits were harvested, and three fruits were selected for evaluation treatment.

2.8 Statistical Analysis

All the analyses were performed in SAS software (Version 9.4, SAS Institute Inc. Cary, North Carolina, USA) using Analysis of variance (ANOVA). Post-hoc analysis was conducted using the Duncan Multiple Range Test Difference (DMRT) and differences between treatments were compared at P= 0.05.

3. RESULTS AND DISCUSSION

3.1 Maximum Temperature, Average Rainfall and Number of Rainy Days

An overview of maximum temperature (°C) is presented with the highest maximum temperature recorded in March at 35.9 °C while the lowest maximum temperature was recorded in January at 33.7 °C (Figure 3). This implies that the trees received the maximum temperature range (30 °C to 38 °C) for Harumanis growth [24]. During the eleven-month study period, March 2022 had the highest average rainfall of 489.8 mm, while May 2022 had

the lowest average rainfall of 143.2 mm (Figure 4). These findings are linked to a transitional phase of the monsoon beginning in March and lasting until mid-May, signaling the end of the North-east Monsoon and resulting in brief periods of heavy rain [25]. Despite the wide range and varying amounts of total rainfall, these factors did not affect the Harumanis' growth since the plants require at least a maximum 300 to 380 mm of rainfall monthly [7]. September 2021 received the greatest number of rainy days in a month which was 24 days, while October 2021 received the least number of rainy days in a month which was 16 days (Figure 5). This study was conducted in ACZ3, which was proven not to have a consistent dry season (Figure 1). Studies on the trends of rainfall on the East coast of Peninsular Malaysia reported a significant increment in yearly rainfall during the significant East Monsoon (NEM) transition, which was observed between November and March to South West Monsoon (SWM) occurring between May and September, including the increased frequency of rainy days [26,27]. In addition, the Northeast Monsoon Winds that hit the South China Sea and Peninsular Malaysia simultaneously caused heavy rains for several days in a row (Malaysian Meteorological Department [28]).

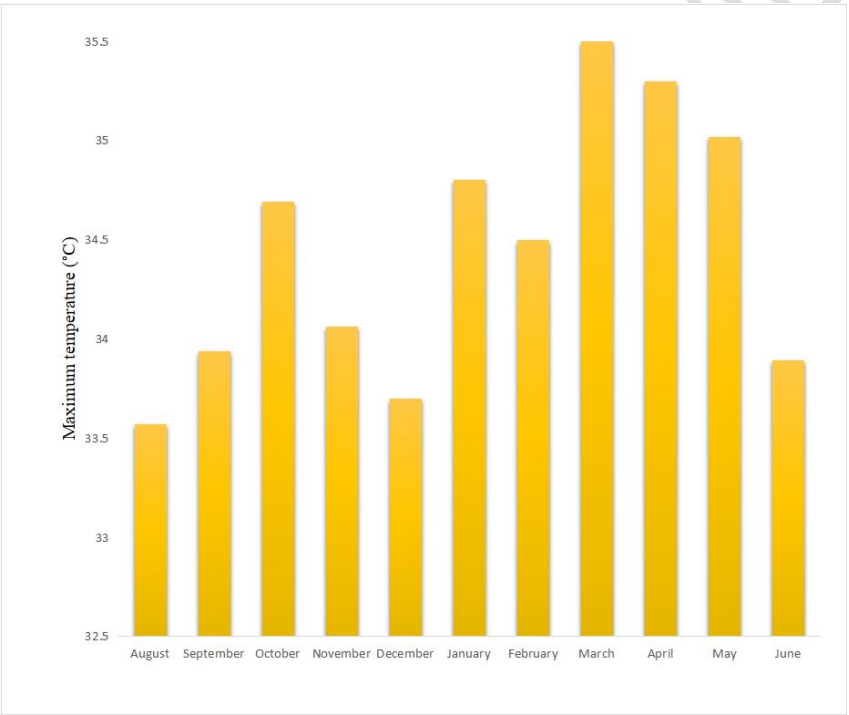


Figure 3. Maximum temperature (°C) from August 2021 to June 2022.

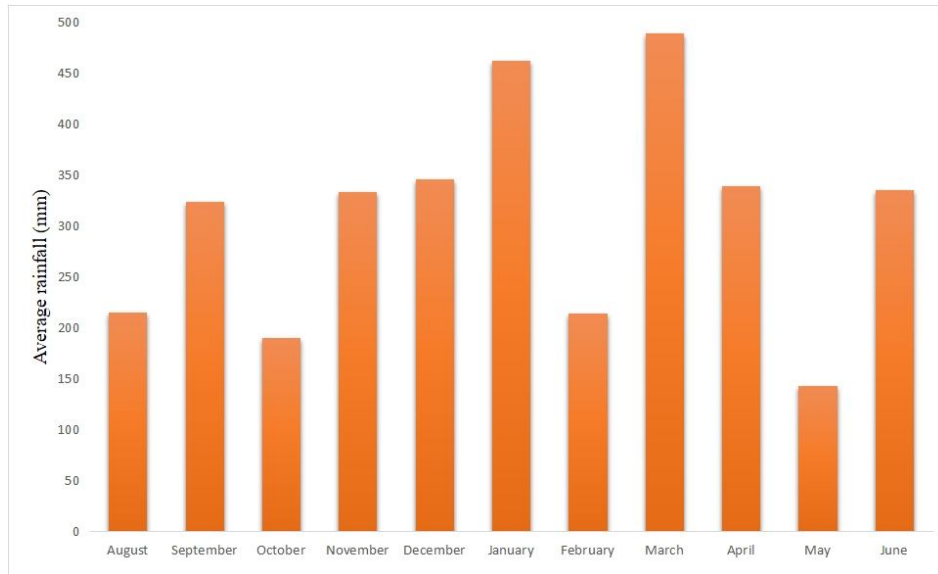


Figure 4. Average rainfall (mm) from August 2021 to June 2022.

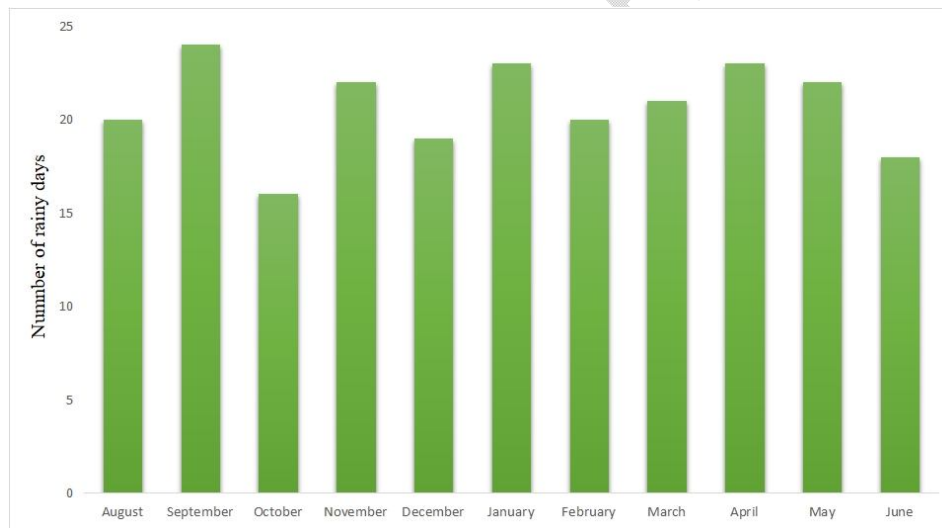


Figure 5. Number of rainy days in a month from August 2021 to June 2022.

3.2 Vegetative Growth

Table 1 indicates that the combination method of girdling and paclobutrazol application (T4) had the most significant adverse effect on internode length, followed by paclobutrazol application (T3), girdling (T2), and the untreated tree (T1). Paclobutrazol, the growth retardant, inhibits and reduces the levels of gibberellins in fruit plants. Gibberellins play an essential role in stimulating cell elongation in trees. The inhibition of gibberellin production does not interfere with cell division. However, the cell elongation is interrupted. As a result, the synthesized internode is compressed and shorter in length [29,30,31]. The same is true for girdling; when photoassimilates are restricted on girdled branches, only changes in shoot

length are visible. The effect of stem girdling at the base of the stem differs from the effect of the upper girdled branch because it prevents photoassimilates accumulation above the girdle phloem from being transported to the roots [32].

Table 1. Effect of girdling, paclobutrazol, combined methods, and untreated trees on plant height (cm), stem diameter (cm), number of primary branches, number of secondary branches, number of shoots and internode length of *Mangifera indica* cv. Harumanis.

Treatment	Vegetative growth					
	Plant height (cm)	Stem diameter (cm)	Number of primary branches	Number of secondary branches	Number of shoots	Internode length (cm)
T1	159.83a	8.61a	2.83a	8.00a	49.67a	12.97a
T2	153.25a	8.44a	3.13a	8.13a	50.25a	9.44b
T3	157.86a	8.14a	3.43a	8.86a	49.71a	8.37c
T4	158.57a	8.84a	2.71a	7.00a	49.29a	7.19d

Means with different letters within each column are significantly different at $P=0.05$ using DMRT. T1: No induction (control); T2: girdling at primary branches; T3: soil drenching at 4 ml/l PBZ; T4: girdling at primary branches + soil drenching at 4 ml/l PBZ.

3.3 Plant Physiology

The combined method of PBZ application and girdling is presented in Table 2, and the result reflected a significant reduction in stomatal conductance, rate of photosynthesis, and transpiration rate. However, the intercellular CO_2 concentration of this combined method (T4) and untreated tree (T1) is significantly higher. This combination method also results in a slight increase in relative chlorophyll content. Paclobutrazol application (T2), on the other hand, has the highest chlorophyll fluorescent values.

An earlier study has demonstrated the effect of paclobutrazol on the production of abscisic acid [33]. One of the most critical functions of abscisic acid is a stress hormone that causes stomatal closure [34]. As a result, trees will absorb CO_2 at a slower pace. The process of photosynthesis depends heavily on CO_2 . Carbon dioxide and photosynthesis are equally correlated. A shortage of CO_2 will reduce photosynthesis. The rate of transpiration will decrease due to stomatal closure in the same way. Under stress, a plant may close its leaf stomata in an effort to conserve water and reduce water loss. Furthermore, along with the application of paclobutrazol to the girdled branches, a general decline in this typical plant adaptation response to the commencement of artificial stress followed a pattern comparable to photosynthetic activity [35].

Nevertheless, no significant difference was observed in plant stem diameter, height, number of primary and secondary branches, and number of shoots generated from all treatments (Table 1). Paclobutrazol elevates abscisic acid production in plants involved in developmental processes, mainly through environmental stress response produced in the roots of the plant and the terminal buds at the top of the plant [36]. Due to ABA's impact on the reproductive phases, gibberellin levels decreased. As a result, there has been no vegetative development, such as an increase in primary and secondary branches or the production of new shoots, and the stem diameter has not been impacted. The Harumanis tree's design is droopy. Thus, any consequences of growth changes cannot be observed from the tree's height. Harumanis' farms in Perlis, Kedah, and Johor employ droop architecture [37].

3.4 Reproductive Growth and Fruit yield

The trees react differently to the effects of the treatments given four weeks later. No new shoot production was seen in trees treated with paclobutrazol application (T3) and combination method of girdling and paclobutrazol application (T4). The leaves appear dark green on the entire plant. This is demonstrated by the highest relative chlorophyll content for the combined method (T4). This indicates that the tree has completed the vegetative stage and is ready to enter the reproductive stage. This is confirmed when flowering appears on the leaf buds 90 days after the treatment for paclobutrazol application (T3) and the combined method (T4) (Table 3). Harumanis flowers and begins to produce fruit three months after treatment [38].

The transition from the vegetative to the reproductive stage is marked by the forming of new reproductive structures, such as flowers [39,40,41]. Furthermore, Table 3 shows the combined method of paclobutrazol and girdling (T4) produced the highest percentage of inflorescence. When growth inhibitors inhibit gibberellin biosynthesis, photosynthate can be redirected into the development of reproductive parts, resulting in accelerated flowering and increased inflorescence [42]. Girdling has been proposed as a method to improve flowering [43], and the inflorescence intensity increased when combined with the application of paclobutrazol (T4) [44]. T4 increased the tree's stress. The chlorophyll fluorescent for T4 proves this. Given that chlorophyll fluorescence is directly related to the rate of energy flow, any perturbation in plant metabolism caused by artificial stress in this experiment will affect fluorescence parameters [45,46].

In the first and second weeks, girdling (T2) treatment produced nearly the same reaction as paclobutrazol application (T3) and combination method of girdling and paclobutrazol application (T4) treatments, but by the end of the third week, T2 treatment began to produce new shoots. **Wallerstein [47] found that new callus bridges form about three weeks after ringing in citrus, but it takes two weeks in grapes. Ran et al. [48] discovered that new callus bridges form about 30 days after ringing in jujube tree, allowing the tree's vascular system, which transports water, nutrients, and other compounds, to function normally [49].** Furthermore, girdling (T2) produced the highest chlorophyll inflorescent in the fourth week. This is the effect of recovered girdled branches, which allows the tree's vascular system, which transports water, nutrients, and other compounds, to function normally. Trees receive their essential needs for growth, such as light, water, air, nutrients, and a suitable temperature. Trees with low and moderate girdling levels maintained high crown vigor five years after girdling, similar to untreated trees, whereas trees with severe girdling had significantly lower crown vigor [50].

Table 2. Effect of girdling, paclobutrazol, combined methods, and untreated trees on photosynthesis rate (A), stomatal conductance (gs), intercellular CO₂ concentration (Ci), transpiration rate (Tr), relative chlorophyll content (SPAD), and chlorophyll fluorescence of *Mangifera indica* cv. Harumanis.

Treatment	Plant physiology					
	Photosynthesis rate (A)	Stomatal conductance (gs)	Intercellular CO ₂ concentration (Ci)	Transpiration rate (Tr)	Relative chlorophyll content (SPAD)	Chlorophyll fluorescence
T1	10.25a	0.30a	313.50a	5.77a	37.08d	0.75c
T2	7.20b	0.12b	246.57c	5.06b	47.65c	0.81a
T3	5.79c	0.09c	294.47b	2.77c	58.79b	0.78b
T4	2.71d	0.07d	312.48a	1.66d	66.21a	0.75c

Means with different letters within each column are significantly different at P= 0.05 using DMRT. T1: No induction (control); T2: girdling at primary branches; T3: soil drenching at 4 ml/l PBZ; T4: girdling at primary branches + soil drenching at 4 ml/l PBZ.

Table 3. Effect of girdling, paclobutrazol, combined methods, and untreated trees on time to inflorescence, number of inflorescence and percentage of the inflorescence of *Mangifera indica* cv. Harumanis.

Treatment	Reproductive growth	
	Time to inflorescence	Percentage of inflorescence
T1	0b	0c
T2	0b	0c
T3	90a	34.61b
T4	90a	50.08a

Means with different letters within each column are significantly different at P= 0.05 using DMRT. T1: No induction (control); T2: girdling at primary branches; T3: soil drenching at 4 ml/l PBZ; T4: girdling at primary branches + soil drenching at 4 ml/l PBZ.

In contrast to the tree's reaction to untreated tree (T1), the tree retained in the vegetative stage since no treatment that represents stress was given to the tree. Since it constantly produces new shoots, T1 had the lowest relative chlorophyll content due to low chlorophyll in the young leaves. Moreover, due to the limited growth factor on the young leaves, T1 showed the lowest chlorophyll fluorescence. The lower the chlorophyll fluorescence value, the more fluorescence there is at saturating light, and therefore, the lower capacity for photosynthesis. It has been demonstrated that compared to other treatments, the measured leaves of T1 have a significantly higher photosynthetic rate (Pn), stomatal conductance (gs), transpiration rate (Tr), and intercellular CO₂ concentration (Ci). As the relative chlorophyll content and chlorophyll fluorescent of the young leaves are significantly lower than those of the old, the rate of photosynthesis is approximately 4-5 times higher in the young leaves than in the old [51]. These responses have found that the common factor responsible for such continuous growing could be living in suitable conditions regarded as no stress applied. [52].

3.5 Fruit yield

Table 4 depicts that both paclobutrazol alone (T3) and the combination of paclobutrazol and girdling (T4) resulted in yield per fruit and yield per tree of *Mangifera indica* cv. Harumanis. Paclobutrazol is a growth inhibitor that plays a vital role in stress responses and adaptation [53]. Plants subjected to stress expressed specific changes in plant development [54]. Under extreme stress, where plants are unable to survive as individuals, they need to flower and produce seeds to survive as a species [22]. Girdling improves fruit set and fruit size in horticulture plants by stopping the downward flow of food material through phloem. Experiments on citrus girdling demonstrated that increasing chlorophyll content increased citrus fruiting [55]. The flowering and fruiting per branchlet were improved by girdling in navel oranges [56] and jamun trees [57] compared to un-girded trees.

Table 4. Effect of girdling, paclobutrazol, combined methods, and untreated trees on yield per fruit and yield per tree of *Mangifera indica* cv. Harumanis.

Treatment	Yield per fruit			Yield per tree	
	Fruit weight (kg)	Fruit length (cm)	Fruit diameter (cm)	Number of fruits	Fruit weight (kg)
T1	0b	0b	0b	0b	0b
T2	0b	0b	0b	0b	0b
T3	0.75a	15.13a	8.88a	4.00a	3.00a
T4	0.79a	15.38a	9.00a	4.33a	3.41a

Means with different letters within each column are significantly different at $P \leq 0.05$ using DMRT. T1: No induction (control); T2: girdling at primary branches; T3: soil drenching at 4 ml/l PBZ; T4: girdling at primary branches + soil drenching at 4 ml/l PBZ.

4. CONCLUSION

The absence of a consistent dry season in agro-climatic zone 3 was widely known. The combination method of girdling and paclobutrazol had the most significant adverse effects on the plant's vegetative stage and physiological capacity. Still, it was most effective in intensifying inflorescence development and boosting fruit yield.

REFERENCES

1. Azizan FA, Roslan N, Ruslan R, Aznan AA, Yusoff AZM. Soil NPK Variability Mapping for Harumanis Mango Grown in Greenhouse at Perlis, Malaysia. *International Journal on Advanced Science Engineering Information Technology*. 2019;9(2): 495-501. DOI: <https://doi.org/10.18517/ijaseit.9.2.2989>
2. Department of Agriculture Malaysia. Fruit Crop Statistics. DOA. 2020. Accessed 23 March 2022. Available: http://www.doa.gov.my/index/resources/aktiviti_sumber/sumber_awam/maklumat_pertanian/perangkaan_tanaman/perangkaan_buah_2020.pd
3. Rahman DAA. Perlis henti eksport harumanis ke luar negara. [Perlis Stops Exporting Harumanis Abroad]. *Berita Harian*. 2019. Accessed 20 September. Available: <https://www.bharian.com.my/berita/wilayah/2019/11/628554/perlis-henti-eksport-harumanis-ke-luar-negara>
4. Rosidah M, Faridah H, Jamaliah MY, Norzaidi MD. Examining market accessibility of Malaysia's Harumanis mango in Japan: Challenges and potentials. *Business Strategy Series*. 2010;11(1): 3-12.
5. Arshad AM, Haruna YR. Climatic Classification for Agricultural Potential in Peninsular Malaysia. *Journal of Biology, Agriculture and Healthcare*. 2016;6(12): 5-13.
6. Ghazali MZ, Nieuwolt S. The Use of an Agricultural Rainfall Index in Malaysia. *International Journal of Biometeorology*. 1982;26: 277-283.
7. Muhamad Hafiz MH, Hartinee A, Dalila N, Zul Helmey MS, Razali M, Siti Aisyah A, Wan Mohd Reza WI, Shaidatul Azdawiyah AT. Effect of Multi-Location Production on the Reproductive Growth, Yield, and Quality of Harumanis Mango. *International Journal of Current Advanced Research*. 2019;8(04): 18175-18180. DOI: <http://dx.doi.org/10.24327/ijcar.2019.18180.3468>
8. Shaidatul Azdawiyah AT, Muhamad Hafiz MH, Mohd Aziz R, Zul Helmey MS, Muhammad Zamir AR, Wan Mahfuzah WI, Mohammad Hariz AR, Mohd Ghazali R, Syarol Nizam AB, Mohd Alif OM. Effects of Environmental Temperature and Precipitation Pattern on Growth Stages of *Mangifera indica* cv. Harumanis Mango. *Journal of Agricultural Science*. 2020;12(12). DOI: <https://doi.org/https://doi.org/10.5539/jas.v12n12p26>
9. Mohd Aziz R, Shaidatul AAT, Fauzi J, Zabawi MAG, Norlida MH, Hafiz MMH, Fazlyzan A, Norfarhah AR, Nizam SAB, Subahir S, Malek AK, Ghazali MR, Alif OMM. Physiological Responses, Nutrient Content and Fruit Quality of Mango (*Mangifera indica* L.) cv. Harumanis at Different Agro-Climatic Zones. *Transaction Malaysian Society of Plant Physiology*. 2018;26: 174-178.
10. Geetha GA, Shivashankara KS, Reddy YTN. Varietal Variations in Temperature Response for Hermaphrodite Flower Production and Fruit Set in Mango (*Mangifera indica* L.). *South African Journal of Botany*. 2016;106: 196-203
11. Khalid NS, Abdullah AH, Shukor SAA, Fathinulsyahir AS, Chau SC, Nor DND, Mansor H. Image Processing Techniques for Harumanis Disease Severity and Weighting Estimation for Automatic Grading System Application. *Journal of Telecommunication, Electronic and Computer Engineering*. 2017;10: 1-15.
12. Jameel MA, Naik SMR, Madhumathi C, Reddy DS, Venkataramana KT. Physiology of flowering in mango. *Journal of Pharmacognosy and Phytochemistry*. 2018;7(6): 2375-2382.
13. Ghadage NJ, Patil SJ, Khopade RY, Shah NI, Hiray SA. Effect of Time and Width of Girdling on Flowering and Yield of Mango (*Mangifera indica* L.) cv. Alphonso. *International Journal of Chemical Studies* 2017;5(6): 1580-1583.

14. Devi AN, Arulmozhiyan R, Balamohan TN. Induction of Off-Season Flowering in Mango through Farmer's Participatory Research in Krishnagiri District under NAIP. *Journal of Pharmacognosy and Phytochemistry*. 2019;8(5): 2466-2471.
15. Bottcher C, Boss PK, Harvey KE, Burbidge CA, Davies C. 2018. Peduncle Girdling of Shiraz (*Vitis vinifera* L.) Bunches and Sugar Concentration at the Time of Girdling affect Wine Volatile Compounds. *Australian Journal of Grape and Wine Research*. 2018;24: 206-218. DOI: <https://doi.org/10.1111/ajgw.12319>
16. Isogimi T, Matsushita M, Nakagawa M. Species-Specific Sprouting Pattern in Two Dioecious *Lindera* Shrubs: The Role of Physiological Integration. *Flora*. 2014; 209(12): 718-724. DOI: <https://doi.org/10.1016/j.flora.2014.08.006>
17. Gawankar MS, Haldankar PM, Salvi BR, Parulekar YR, Dalvi NV, Kulkarni MM, Saitwal YS, Nalage, N. A. Effect of gGirdling on Induction of Flowering and Quality of Fruits in Horticultural Crops: A review. *Advanced Agricultural Research and Technology Journal*. 2019;3(2): 201-215.
18. Khandaker MM, Abm SH, Normaniza O, Amru NB. 2011. Application of Girdling for Improved Fruit Retention, Yield and Fruit Quality in *Syzygium samarangense* under Field Conditions. *International Journal of Agriculture and Biology*. 2011;13(1): 18-24.
19. Desta B, Amare G. Paclobutrazol as a Plant Growth Regulator. *Chemical and Biological Technologies in Agriculture*. 2021;8(1). DOI: <https://doi.org/10.1186/s40538-020-00199-z>
20. Sah SK, Reddy KR, Li J. Abscisic Acid and Abiotic Stress Tolerance in Crop Plants. *Frontiers in Plant Science*. 2016;7: 571. DOI: <https://doi.org/10.3389/fpls.2016.00571>
21. Shinozaki K, Yamaguchi SK. Molecular Responses to Dehydration and Low Temperature: Differences and Cross-Talk between Two Stress Signaling Pathways. *Current Opinion in Plant Biology*. 2000;(3): 217-223.
22. Takeno K. Stress-Induced Flowering: The Third Category of Flowering Response. *Journal of Experimental Botany*. 2016;67(17): 4925-4934. DOI: <https://doi.org/10.1093/jxb/erw272>
23. Das A, Geetha GA, Ravishankar KV, Shivashankara KS, Roy TK, Dinesh MR. Interrelations of Growth Regulators, Carbohydrates and Expression of Flowering Genes in Leaf and Shoot Apex of Regular and Alternate Bearing Mango (*Mangifera indica* L.) Cultivars during Flowering. *Scientia Horticulturae*. 2019;253(11): 263-269. DOI: <https://doi.org/10.1016/j.scienta.2019.04.027>
24. Uda MNA, Subash C, Gopinath B, Hashim U, Asyraf H, Afnan MN, Aminudin A, Bakar MAA, Sulaiman MK, Parmin NA. 2020. Harumanis Mango: Perspectives in Disease Management and Advancement using Interdigitated Electrodes (IDE) Nano-Biosensor. In: *Proceeding of the 2nd Joint Conference on Green Engineering Technology and Applied Computing 2020*, Bangkok, Thailand; February 4-5, 2020. IOP Publishing. pp. 012180. DOI: <https://doi.org/10.1088/1757-899X/864/1/012180>
25. Carvalho M, Tang A, Zainal F. Brace for Flash Floods Thunderstorms until May, Says Tuan Ibrahim. *The Star*. 2022. Accessed 29 March 2022. Available: <https://www.thestar.com.my/news/nation/2022/03/15/brace-for-flash-floods-thunderstorms-until-mid-may-says-tuan-ibrahim>
26. Mayowa OO, Pour SH, Shahid S, Mohsenipour M, Harun S, Heryansyah A, Ismail T. Trends in Rainfall and Rainfall-Related Extremes in the East Coast of Peninsular Malaysia. *Journal of Earth System Science*, 2015;24(8): 1609-1622. DOI: <https://doi.org/10.1007/s12040-015-0639-9>
27. Tang KHD. Climate Change in Malaysia: Trends, Contributors, Impacts, Mitigation and Adaptations. *Science of the Total Environment*. 2019;650(2): 1858-1871. DOI: <https://doi.org/10.1016/j.scitotenv.2018.09.316>

28. Malaysian Meteorological Department. Northeast Monsoon Report. Kuala Lumpur Monsoon Activity. METMalaysia. 2022. Accessed 20 September 2022. Available: <https://m.met.gov.my/content/pdf/penerbitan/KLMAC.pdf>
29. Kumar A, Ram S, Bist LD, Singh CP. Paclobutrazol Boost for Fruit Production: A review. *Research International Journal of Energy and Environmental Sciences*. 2021;1(1): 019-031.
30. Meena RK, Saroj PL, Adiga JD, Nayak MG, Meena HR. Effect of Paclobutrazol on Flowering, Fruiting and Yield of Cashew (*Anacardium occidentale* L.) in West Coast Region of Karnataka. *International Journal of Current Microbiology and Applied Sciences*. 2018;7(10): 380-391. DOI: <https://doi.org/10.20546/IJCMAS.2018.710.041>
31. Pal P, Mondal S, Kundu S. Effect of Paclobutrazol on Vegetative Response Production of Mango (*Mangifera indica* L.) cv. Himsagar. *International Journal of Current Microbiology and Applied Science*. 2017; 6(12): 1264-1275. DOI: <https://doi.org/10.20546/ijcmas.2017.612.143>
32. Lopez R, Brossa R, Gil L, Pita P. Stem Girdling Evidences a Trade-Off between Cambial Activity and Sprouting and Dramatically Reduces Plant Transpiration due to Feedback Inhibition of Photosynthesis and Hormone Signaling. *Frontiers in Plant Science*. 2015;6: 285. DOI: 10.3389/fpls.2015.00285
33. Xia X, Tang Y, Wei M, Zhao D. Effect of Paclobutrazol Application on Plant Photosynthetic Performance and Leaf Greenness of Herbaceous Peony. *Horticulturae*. 2018;4(5). DOI: doi:10.3390/horticulturae4010005
34. Bharath P, Gahir S, Raghavendra AS. Abscisic Acid Induced Stomatal Closure: An Important Component of Plant Defense Against Abiotic and Biotic Stress. *Frontiers in Plant Science*. 2021;12: 615114. DOI: <https://doi.org/10.3389/fpls.2021.615114>
35. Agurla S, Gahir S, Munemasa S, Murata Y, Raghavendra AS. Mechanism of Stomatal Closure in Plants Exposed to Drought and Cold Stress. *Advances in Experimental and Biology*. 2018;1081: 215-232. DOI: https://doi.org/10.1007/978-981-13-1244-1_12
36. Tardieu F, Parent B, Simonneau T. Control of Leaf Growth by Abscisic Acid: Hydraulic or Non-Hydraulic Processes? *Plant, Cell and Environment*. 2010;33: 636–647.
37. Sani MA, Abbas H, Jaafar MN, Ghaffar MBA. Morphological Characterization of Harumanis Mango (*Mangifera indica* Linn.) in Malaysia. *International Journal of Environmental and Agriculture Research*. 2018; 4 (1): 45-51.
38. Zul Helmey MS, Muhamad Hafiz MS, Wan Mahfuzah WI, Shaidatul Azdawiyah AT, Mohd Aziz R, Mohd Farid AF, Muhammad Izzat Z, Siti Aishah H, Siti Afiqah J. 2021. Effect of Paclobutrazol (PBZ) Application on Vegetative, Reproductive Growth and Fruit Quality of Harumanis Mango under Greenhouse Conditions. *Transaction Malaysian Society of Plant Physiology*. 2021;28: 182-187.
39. Amasino R. Seasonal and Developmental Timing of Flowering. *Plant Journal*. 2010;61: 1001–1013.
40. Andres F, Coupland G. The Genetic Basis of Flowering Responses to Seasonal Cues. *Nature Reviews Genetics*. 2012;13: 627–639.
41. Huijser P, Schmid M. The Control of Developmental Phase Transitions in Plants. *Development*. 2011;138: 4117–4129.
42. Husen S, Ishartati E, Muhidin M, Siskawardani DD, Rizky A, Syaifudin A, Onthong J. 2021. Modified Off-Season Technology to the Flowering Time and Fruit Yield of Arumanis Mango (*Mangifera indica* L.). In: *Proceeding of The 1st International Conference on Bioenergy and Environmentally Sustainable Agriculture Technology (ICoN BEAT 2019)*, Java, Indonesia; November 7-9 2019. EDP Sciences. pp. 289. DOI: <https://doi.org/10.1051/e3sconf/202122600045>

43. Warang OS, Haldankar PM, Parulekar YR, Salvi VR, Chavan SA, Dalvi NV, Thorat SV, Bhuwad AV. Non-Chemical Approaches for Induction of Appropriate Flowering in Mango cv. Alphonso. *Bulletin of Environment Pharmacology and Life Sciences*. 2019;8(1): 58-62.
44. Urban L, Alphonsout L. Girdling Decreases Photosynthetic Electron Fluxes and Induces Sustained Photoprotection in Mango Leaves. *Tree Physiology*. 2007;27(3): 345-352. DOI: <https://doi.org/10.1093/treephys/27.3.345>
45. Kancheva RH, Borisova, DS, Iliev IT. Chlorophyll fluorescence as a plant stress indicator. 2008;5.
46. Barbagallo R, Oxborough K, Pellet KE, Baker NR. Rapid, Non-Invasive Screening for Perturbations of Metabolism and Plant Growth using Chlorophyll Fluorescence Imaging. *Plant Physiology*. 2003;32(2): 485-93. DOI: <https://doi.org/10.1104/pp.102.018093>
47. Wallerstein I, Goren R, Ben-Tal Y. Effect of Ringing on Root Starvation in Sour Orange Seedlings. *Journal of Horticultural Sciences*. 1978;3: 109–113.
48. Ran J, Guo W, Hu C, Wang X, Li P. Adverse Effects of Long-Term Continuous Girdling of Jujube Tree on the Quality of Jujube Fruit and Tree Health. *Agriculture*. 2022;12(7): 922. DOI: <https://doi.org/10.3390/agriculture12070922>
49. Matsushita M, Nishikawa H, Tamura A. Effects of Girdling Intensity, Pruning Season and Thinning on Tree Growth, Crown Vigor and Wound Recovery in Japanese Larch. *Forests*. 2022;13(3): 449. DOI: <https://doi.org/10.3390/f13030449>
50. Goren R, Huberman M, Goldschmidt EE. Girdling: Physiological and Horticultural Aspects. *Horticultural Reviews*. 2004;30: 1–36.
51. Kirk JTO, Goodchild DJ. Relationship of Photosynthetic Effectiveness of Different Kinds of Light to Chlorophyll Content and Chloroplast Structure in Greening Wheat and in Ivy Leaves. *Australian Journal of Biological Sciences*. 1972;25: 215-41.
52. Wada KC, Takeno K. Stress-Induced Flowering. *Plant Signaling & Behavior*. 2010;5: 944– 947.
53. Soumya P, Kumar P, Pal M. Paclobutrazol: A Novel Plant Growth Regulator and Multi-Stress Ameliorant. *Indian Journal of Plant Physiology*. 2017;22(3): 267-278. DOI: <http://doi.org/10.1007/s40502-017-0316-x>
54. Seleiman MF, Alsuhaibani N, Ali N, Akmal M, Alotaibi M, Refay Y, Dindarogu T, Wajid HHA, Battaglia ML. Drought Stress Impacts on Plants and Different Approaches to Alleviate its Adverse Effects. *Plants*. 2021; 10(2): 259. DOI: <https://doi.org/10.3390/plants10020259>
55. Rivas F, Gravina A, Agusti M. Girdling Effects on Fruit Set and Quantum Yield Efficiency of PSII in Two Citrus Cultivars. *Tree Physiology*. 2007;27: 527-535. DOI: <https://doi.org/10.1093/treephys/27.4.527>
56. Ibrahim MM, Mohamed AO, Mohamed AH, Omar AA. Effect of Some Girdling Treatments on Fruiting Behavior and Physio-Chemical Properties of Washington Navel Orange Trees. *Journal of Agriculture and Veterinary Science*. 2016;9(16): 58-65.
57. Haldankar PM, Dalve NV, Parulekar YR., Lawande KE. Induction of Flowering by Girdling in Jamun cv. Konkan Bahadoli. *Journal of Plant Studies*. 2014;3(2): 45-49. DOI: <http://dx.doi.org/10.5539/jps.v3n2p45>