

ASSESSMENT OF LENGTH-WEIGHT RELATIONSHIP OF *Oreochromis niloticus* (Nile Tilapia, Cichlidae, LINNAEUS, 1758) FROM QUA IBOE RIVER ESTUARY, SOUTHEASTERN NIGERIA

Formatted: Font: Not Bold

Abstract

Length-Weight Relationship (LWR) of *Oreochromis niloticus* from Qua Iboe River Estuary was studied for a period of 12 months, April 2021-March 2022. Samples of the species were collected from the catches of artisanal fisheries using various mesh sizes of gill and cast nets. The b values in males ranged from 2.25-3.08 with a mean of 2.7333 ± 0.2743 while that of the females varied between 2.41 and 2.930 with a mean value of 2.7075 ± 0.1804 . The overall growth coefficient in the LWR ($W = aL^b$) ranged from 2.25-3.08 with a mean value of 2.72 ± 0.04 . Both male and female recorded negative allometric growth and the exponents were significantly less than isometric ($p < 0.05$). Higher b values were recorded in males. There was no significant difference between the b -values of males and females ($p > 0.05$) during the study with the respective exponential relationships. These indicated that the length-weight relationships were similar in both sexes during the period of study. Higher b -value was recorded in the wet season but there was no significant difference between the dry and wet season ($p > 0.05$). This study provides the basic information, which could enhance production potential of *O. niloticus* and its sustainable development, culture and management in Qua Iboe River Estuary, Nigeria.

Keywords: *Oreochromis niloticus* (Nile Tilapia), Length-weight relationship, Qua Iboe River Estuary.

1. INTRODUCTION

An aspect of fish biology such as length-weight relationship is important in studying fish biology. Length-weight relationship can be used to predict weight from length measurements made in their yield assessment (Pauly 1993, Nehemia 2012). The relationship between the length and weight may part from cube law value 3 depending on the ecological and physiological condition, which may affect their niche.

Formatted: Indent: First line: 0.5"

Fish can ~~either attain~~ attain either Isometric growth, negative allometric growth or positive allometric growth. Isometric growth is when $b = 3$ meaning that the fish is in a stable condition and it associate with no change in body shape as the fish grows. Negative allometric growth indicates that the fish becomes more slender as it increase in weight and finally the position positive allometric growth implies that the fish become relatively deeper-bodied as it increases in length (Riedel *et al.*, 2007).

Formatted: Font: Italic

The study of length-weight relationship of Nile Tilapia (*Oreochromis niloticus*) family (Cichlidae) Linnaeus (1758) is having a crucial importance to fisheries biologist as it serves many purposes. It establishes the mathematics relationship between two variables, length and weight so that the unknown variable can be calculated from the known to solve practical fisheries problem. The relative condition can be estimated to assess the general wellbeing of the fish. Finally, it is used in the estimation of potential yield per recruit in the study of population dynamics (Kara *Marx et al.*, 2013).

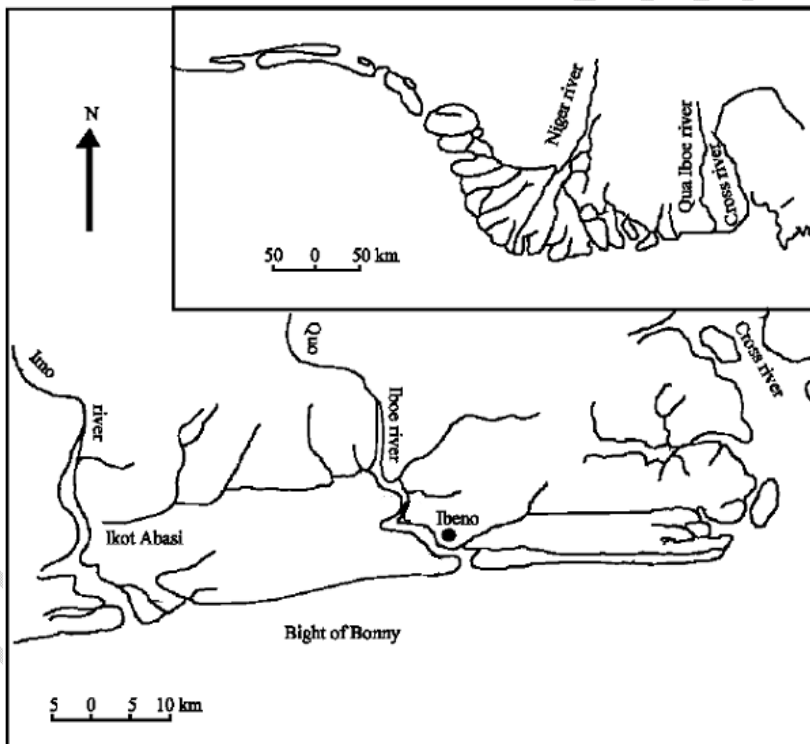
Formatted: Font: Italic

Tilapias are plastic animal because their growth and maximum obtainable size can be seriously influenced by the physical and biological composition of their environment. Olurin and Aderibigbe, (2006) stated that length and weight of the fish is important yardstick used for the purpose of fish stock assessment in fishery management. Thus, the objective of this study is to determine monthly and seasonal variations in the growth pattern of male and female *Oreochromis niloticus* from Qua Iboe River Estuary in Ibeno Local Government Area, AkwaIbom State Nigeria using length-weight relationship.

2. MATERIALS AND METHODS

2. Study Area: This study was carried out at Qua Iboe River Estuary Ibeno Local Government Area, Akwalbom State Nigeria. Ibeno is located in the Southeastern part of Nigeria ($4^{\circ}.49' 02.88''N; 7^{\circ}56' 61.09''E$). It is one of the three major hydrographic feature in Akwalbom State, it is located in the tropical belt with an equatorial climate regime characterized by dry season (November-March) and wet season (April – October) (Map 1).

Formatted: Justified, Indent: First line: 0.5", No bullets or numbering



Map1-Map 1: Map showing study location

Study Area: This study was carried out at Qua-Iboe River Estuary Ibeno Local Government Area, Akwa-Ibom State Nigeria. Ibeno is located in the Southeastern part of Nigeria (4° 49' 02.88"N; 7° 56' 61.09"E). It is one of the three major hydrographic features in Akwa-Ibom State, it is located in the tropical belt with an equatorial climate regime characterized by dry season (November–March) and wet season (April–October).

The vegetation of the mangrove swamp comprises of the red mangroves (*Rhizophora harrisonii*) (check spelling) *R. mangle* and *R. racemosa*, white mangroves (*Avicennia africana*) and black mangroves (*Laguncularia racemosa*) and *Nypa fruticans* (Karal Marx *et al.* (2013)).

Formatted: Font: Italic

Formatted: Font: Italic

Formatted: Font: Italic

Formatted: Font: Italic

Formatted: Font: Italic

Formatted: Font: Not Italic

Fish sampling collection, preservation and measurement

Fish sampling and collection: Specimen collection was done with the help of local fishermen using traditional fishing tools-gears such as hook and line, traps, basket and gillnets from April 2021 to March 2022 and was preserved in a container containing 10% formalin solution. Each specimen was measured to the nearest 0.1 cm total length (TL) using a measuring board and total weight (TW) was taken to the nearest 0.1 g using a top loading mettle PR-series model 2202/E electronic balance PR-series model PR-2202/E OHAUS.

Formatted: Indent: First line: 0.5"

Determination of Length-Weight Relationship

The length-weight (L-W) relationships were computed using empirical allometric equation of the form (Lagler, Bardach, Miller and Passion, 1977; Tyler and Gallucci, 1980; Dulcic, and Kraijevic, 1996; Ecoutin and Albaret, 2003).

Comment [M1]: This citation is not included in the references.

$$Wt = a(TL)^b \dots\dots\dots 1$$

Comment [M2]: It is recommended to use the equation editor

- Where Wt = Total weight of fish (g)
- TL = Total length of fish (cm)
- a = proportionality constant, and
- b = Regression exponent

The values of a and b were estimated by least square linear regression using double log transformed weight and length data according to the formula (Khaironizam and Norma-Rashidi, 2002) below:

Formatted: Indent: Left: 0", First line: 0.5"

Comment [M3]: This citation is not included in the references.

$$\text{Log wt} = \text{Log } a \pm b \text{ log TL} \dots\dots\dots 2$$

Where: Wt is total weight of fish (g).

Formatted: Font: Not Bold

TL is total length (cm), a is the intercept on the Y-axis and b is exponent or slope indicating isometric growth when $b = 3$ (Pauly, 1984). Values other than 3 indicate allometric growth. If $b > 3$, its positive allometric and the fish becomes heavier for its length as it grows larger. If $b < 3$, its negative allometric and the fish becomes lighter and thin for its length as it grows larger. The length-weight relationship were tested using linear regression model $p < 0.05$ significant level and the confidence limit for the regression coefficient interval.

The exponent (b) of the length-weight relationship were tested for departure from Isometry ($b = 3$) i.e. whether b values differ from 3 significantly, using a t-statistic function given in Pauly (1984). The degree of association between the length and weight were expressed by a correlation coefficient "r". The correlation coefficient could take values ranging between -1 and ± 1 .

When “r” is negative, it means that one variable tends to decrease as the other increases. There is a negative correlation which corresponds to a negative value of “b” in regression analysis. On the other hand, when “r” is positive, it means that one variable increases as the other [increases](#), which corresponds to a positive value of b in regression analysis (Pauly, 1983). The parameters of this relationship were computed for each sex, months, and season.

UNDER PEER REVIEW

Statistical Analysis

Student's t-test (Snedecor and Cochran, 1980) was used to test the means of biological data between dry and wet seasons, male and female. Length-weight data ~~a~~ pairs, correlation coefficient (r) was used to examine the strength of the association in length-weight data pairs (Beyer, 1978; Pauly, 1987; Haruna, 2006; Udo *et al.*, 2008). To meet the requirement for normality in parametric statistics, logarithmic transformation were performed on the length-weight data pairs following the methods of Gregory (1974); Ukpong (1995); Nyaku, Okayi, Yem, and Abdulrahman (2008) and Udofia (2011). The Microsoft Excel was employed for the graphical presentation of data. Statistical analyses were performed using Statistical Package for Social Sciences (SPSS, version 19.0) for Windows, Paleontological Statistical Software, PAST, version 20.0. Data analyzed were presented in summary format in tables, graphs and histograms for easy interpretation of data analyzed.

Comment [M4]: This citation is not included in the references.

Formatted: Indent: First line: 0.5"

3. RESULTS

GROWTH OF *O. niloticus* FROM QUA IBOE RIVER

Length-Weight Relationship (LWR)

Table 1. Variation in LW Parameters of *O. niloticus* for Qua Iboe River Estuary

		N	Mean	Std. Deviation	Std. Error	Minimum	Maximum
N	Male	1	2 57.41667	9.317221	2.689650	47.000	76.000
	Female	1	2 48.16667	7.383438	2.131415	33.000	61.000
	Total	2	4 52.79167	9.482153	1.935536	33.000	76.000
A	Male	1	2 .06283167	.042047834	.012138164	.015590	.140860
	Female	1	2 .0551917	.043635942	.012596612	.013080	.151380
	Total	2	4 .05896167	.042088630	.008591306	.013080	.151380
b	Male	1	2 2.733333	.274270	.079175	2.250	3.080
	Female	1	2 2.70750	.180359	.052065	2.410	2.930
	Total	2	4 2.72042	.227395	.046417	2.250	3.080
R	Male	1	2 .87491750	.093997784	.027134823	.669910	.977510
	Female	1	2 .90523917	.061986518	.017893966	.804230	.988610
	Total	2	4 .89007833	.079392654	.016205958	.669910	.988610

The intersexual variation in length-weight parameters of *O. niloticus* presented in Table 1. The b-values in males ranged from 2.25-3.08 with a mean of 2.7333 ± 0.2743 while that of the females varied between 2.410 and 2.930 (mean = 2.7075 ± 0.1804). Both male and female recorded negative allometric values and the exponents were significantly less than isometric ($P < 0.05$). Higher mean b-value was recorded in males, however, there was no significant difference between the b-values of males and females ($P > 0.05$) during the study with the respective exponential relationships.

$$\text{Male: } TW = 0.06283TL^{2.7333}$$

$$\text{Female: } TW = 0.05519TL^{2.7075}$$

These indicated that the LWRs were similar in both sexes during the period of study.

Formatted: Font: Not Bold

Formatted: Not Expanded by / Condensed by

Formatted: Expanded by 1 pt

Formatted: Expanded by 5.9 pt

Formatted: Expanded by 0.15 pt

Formatted: Expanded by 3.3 pt

Formatted: Expanded by 0.35 pt

Formatted: Expanded by 3.3 pt

Formatted: Expanded by 0.35 pt

Formatted: Expanded by 0.35 pt

Formatted: Expanded by 0.35 pt

Formatted: Expanded by 3.3 pt

Formatted: Expanded by 0.35 pt

Formatted: Expanded by 5.9 pt

Formatted: Expanded by 0.15 pt

Formatted: Expanded by 1.25 pt

Formatted: Expanded by 0.2 pt

Formatted: Expanded by 1.6 pt

Formatted: Expanded by 0.3 pt

Formatted: Condensed by 4.4 pt

Formatted: Expanded by 38.2 pt

Formatted: Condensed by 4.4 pt

Formatted: Expanded by 38.2 pt

Formatted: Expanded by 5.9 pt

Formatted: Expanded by 0.15 pt

Formatted: Expanded by 3.65 pt

Formatted: Expanded by 0.25 pt

Formatted: Expanded by 5.9 pt

Formatted: Expanded by 0.15 pt

Formatted: Expanded by 1.25 pt

Formatted: Expanded by 0.2 pt

Formatted: Expanded by 1.6 pt

Formatted: Expanded by 0.3 pt

Formatted: Indent: First line: 0.5"

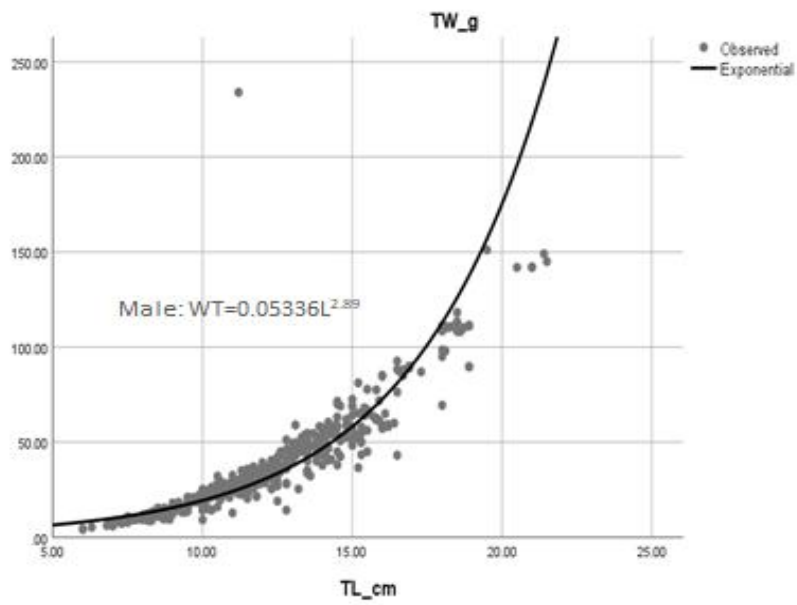


Fig. 1: Length-Weight Relationship of Male *O. niloticus* from Qua Iboe River Estuary

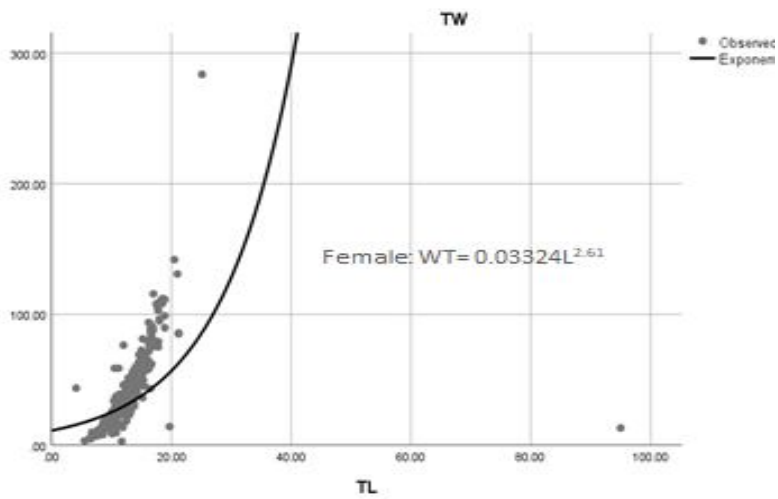


Fig. 2: Intersexual Variation in Length-Weight Relationship of Female *O. niloticus* from Qua Iboe River Estuary

Formatted: Font: Not Italic

Formatted: Line spacing: 1.5 lines

Formatted: Font: Not Italic

Table 2: Overall Mean Growth Value \pm Standard Deviation, minimum and maximum values of (a intercept, b exponent and R Regression coefficient variables of *O. niloticus*)

	Minimum Statistic	Maximum Statistic	S u m Statistic	M e a n Statistic	Std. Error	Std. Deviation Statistic
N	33.000	76.000	1267.000	52.79167	1.935536	9.482153
a	.013080	.151380	1.416290	.05901208	.008591306	.042088630
b	2.250	3.080	65.290	2.72042	.046417	.227395
R	.669910	.988610	21.361880	.89007833	.016205958	.079392654

The b values ranged from 2.25-3.08. The mean value of 2.72 ± 0.04 indicates negative allometric growth. The frequency distribution showed dominance of b-values between 2.80 to 3.00 (Fig 3). There was significant difference between the b-value obtained here and isometric ($P > 0.05$). This implies that the fish increase in length was not accomplished with increase in body weight resulting in a slim fish.

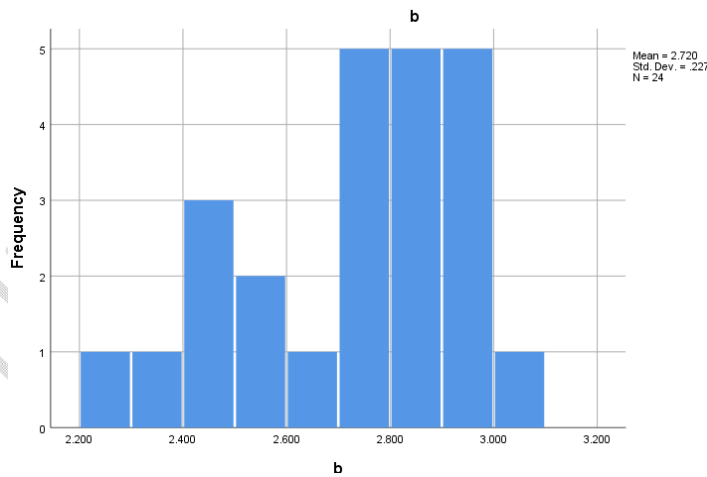


Fig. 3: Length and Weight Frequency Distributions

Formatted: Font: Not Bold

Formatted: Expanded by 2.85 pt

Formatted: Condensed by 0.6 pt

Formatted: Expanded by 1.55 pt

Formatted: Condensed by 1.65 pt

Formatted: Not Expanded by / Condensed by

Formatted: Expanded by 0.95 pt

Formatted: Expanded by 0.35 pt

Formatted: Expanded by 4.95 pt

Formatted: Condensed by 0.1 pt

Formatted: Expanded by 0.2 pt

Formatted: Expanded by 0.95 pt

Formatted: Expanded by 0.35 pt

Formatted: Indent: First line: 0.5", Line spacing: Double

Formatted: Font: Not Italic

A plot of total weight (TW_g) against total length (TL_{cm}) of pooled specimens of *O. niloticus* during the period of study is shown in Fig. 4. There was a positive correlation between total length and weight with an exponential relationship of the form: $TW = 0.059012TL^{2.7204}$

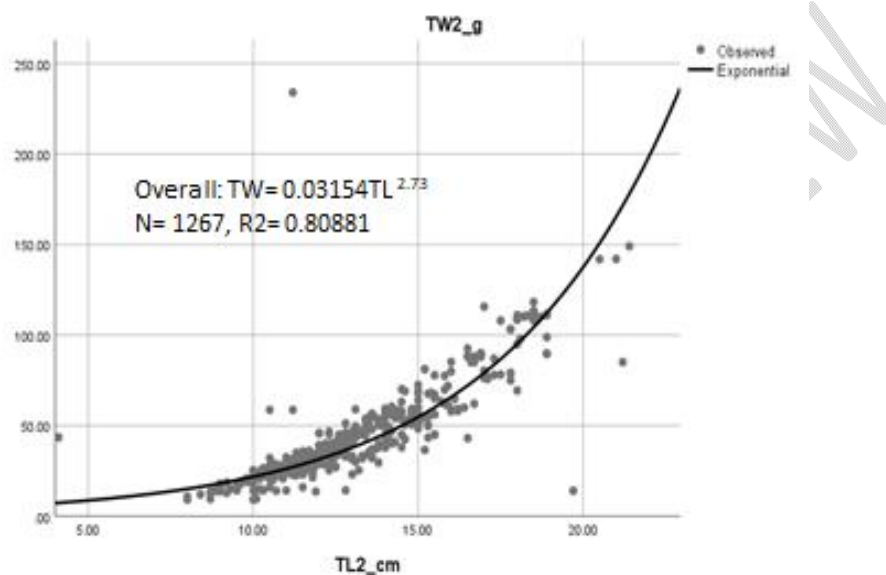


Fig. 4: Length and Weight Frequency Distributions ($TW = 0.059012TL^{2.7204}$)

Formatted: Font: Not Italic

Seasonal Variation in Length-Weight Parameters of *O. niloticus*

Formatted: Font: Not Bold

Table 3: Seasonal Variation in Length-Weight Parameters of *O. niloticus* from Qua Iboe River

Formatted: Font: Not Bold

		M e a n	Std. Deviation	Std. Error	Minimum	M a x i m u m
N	wet season	54.21429	12.223424	3.266847	33.000	76.000
	dry season	50.80000	2.529822	.800000	47.000	56.000
	T o t a l	52.79167	9.482153	1.935536	33.000	76.000
A	wet season	.08713643	.032645876	.008724977	.026170	.151380
	dry season	.01963800	.005885341	.001861108	.013080	.028150
	T o t a l	.05901208	.042088630	.008724977	.013080	.151380
B	wet season	2.79286	.188901	.050486	2.410	3.080
	dry season	2.61900	.247002	.078109	2.250	2.950
	T o t a l	2.72042	.227395	.046417	2.250	3.080
R	wet season	.93327071	.049043776	.013107500	.834650	.988610
	dry season	.82960900	.075292841	.023809687	.669910	.918510
	T o t a l	.89007833	.079392654	.016205958	.669910	.988610

Formatted: Expanded by 1.5 pt

Formatted: Expanded by 0.25 pt

Formatted: Expanded by 7.9 pt

Formatted: Expanded by 0.15 pt

Formatted: Condensed by 4.5 pt

Formatted: Expanded by 43.5 pt

Formatted: Expanded by 0.55 pt

Formatted: Expanded by 0.35 pt

Formatted: Expanded by 0.55 pt

Formatted: Expanded by 0.35 pt

Formatted: Expanded by 1.65 pt

Formatted: Expanded by 0.35 pt

During the study, the dry season b values ranged between 2.25 and 2.95 (mean = 2.62±0.24) while the wet season exponents ranged from 2.410-3.080 with a mean value of 2.793±0.18891. Both seasons recorded negative allometric values as there was a significant departure from isometric. However, higher b-value was recorded in the wet season but there was no significant difference between the dry and wet season (P>0.05). There was positive relationship between the total weight and total length as shown by the correlation coefficient.

The seasonal exponential relationships can be presented as:

$$\text{Dry season: } TW=0.01964TL^{2.61900}$$

$$\text{Wet season: } TW=0.08714TL^{2.7929}$$

The results indicated that the length-weight data pairs were similar in both season. Plots of total weight (TW_g) against total length (TL_{cm}) of pooled specimens of *O. niloticus* in respect to season are shown in Fig. 5a and b.

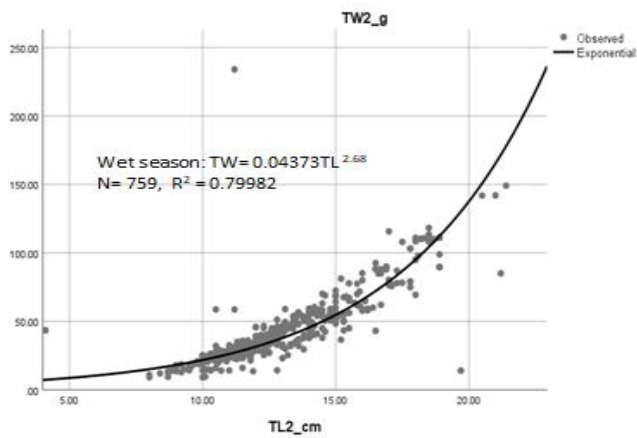
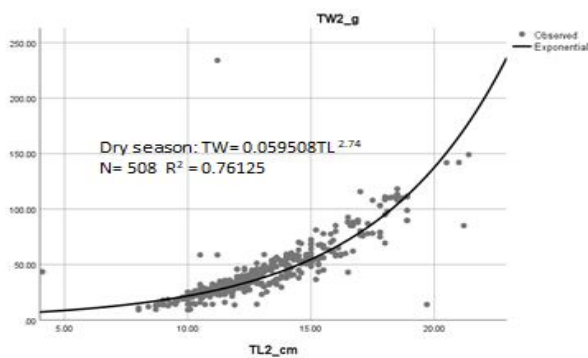


Fig 5a. Wet season graphs of LWR



Formatted: Font: Not Italic

Formatted: Font: Not Italic

Formatted: Indent: First line: 0", Space After: 8 pt

The monthly variation in mean b-values \pm standard deviation and range of *O. niloticus* depicted ~~showed~~ in Table 4.

Formatted: Line spacing: 1.5 lines

Table 4: Monthly Variation in Mean b-values \pm Standard Deviation, Minimum and Maximum b Values of *O. niloticus*

Formatted: Font: Not Bold

	N	Mean	Std. Deviation	Std. Error	Minimum	Maximum
B April	2	2.57000	.226274	.160000	2.410	2.730
May	2	2.80000	.042426	.030000	2.770	2.830
June	2	2.77500	.049497	.035000	2.740	2.810
July	2	2.68500	.247487	.175000	2.510	2.860
August	2	2.93000	.028284	.020000	2.910	2.950
September	2	2.96000	.042426	.030000	2.930	2.990
October	2	2.83000	.353553	.250000	2.580	3.080
November	2	2.78500	.035355	.025000	2.760	2.810
December	2	2.91000	.056569	.040000	2.870	2.950
January	2	2.54000	.183848	.130000	2.410	2.670
February	2	2.51500	.289914	.205000	2.310	2.720
March	2	2.34500	.134350	.095000	2.250	2.440
Total	24	2.72042	.227395	.046417	2.250	3.080

Formatted: Expanded by 6.5 pt

Formatted: Expanded by 0.2 pt

Formatted: Not Expanded by / Condensed by

Formatted: Expanded by 7 pt

Formatted: Not Expanded by / Condensed by

Formatted: Expanded by 2.05 pt

Formatted: Condensed by 0.8 pt

Formatted: Not Expanded by / Condensed by

Formatted: Expanded by 3.4 pt

Formatted: Not Expanded by / Condensed by

Formatted: Expanded by 7 pt

Formatted: Not Expanded by / Condensed by

Formatted: Line spacing: 1.5 lines

The results revealed variability in b-values with a peak in October and a trough in March (Fig. 6).

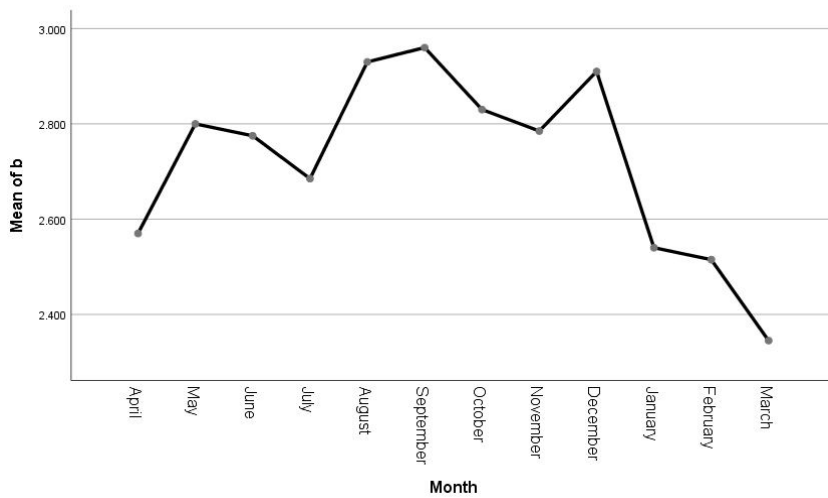


Fig.6: Monthly Variation in b Values in *O. niloticus* from Qua Iboe River Estuary

Monthly mean b-values ranged from 2.345-2.9600 with a mean of 2.7204 ± 0.2274 . All the months recorded mean b-values that were less than isometric implying that they recorded negative allometric growth.

4. DISCUSSION

Length-Weight Relationship (LWR) of *Oreochromis niloticus* from Qua Iboe River Estuary was studied for a period of 12 months, April 2021-March 2022. The b-values in males and females recorded negative allometric growth and the exponents were significantly less than isometric ($p < 0.05$). The exponent values gotten in this study were higher than those of Steve and

Formatted: Font: Not Italic

Formatted: Font: Not Italic

Formatted: Font: Not Italic

Formatted: Justified

Formatted: Font: 12 pt

Formatted: Indent: Left: 0", First line: 0.5",
Line spacing: Double

Okeyo (2019) who recorded b-value of less than 2 for *O. niloticus* in the wild and cage culture. It was also higher than those recorded by Ojuoket *al.* (2000); Njiru *et al.* (2006) and Yongo *et al.* (2018) in *O. niloticus* from Lake Victoria, Kenya whose 'b' values were below 2. The results here were also higher than those of a related species, *T. zilli* as was reported by Ibrahim *et al.* (2008) in Abu-zaba Lake, Cairo, Egypt.

Comment [M5]: These citations are not included in the references.

Negative allometric growth shows that the fish becomes thinner as its body weight increases as opposed to a positive allometric growth, which implies that the fish becomes relatively broader and fatter as its length increases. The value of the regression coefficient b in the length-weight relationship of fish is an important bio-indicator in revealing the amount of food intake and the pattern in which the fish is growing which varies depending on the ecological condition of the ecosystem. Negative allometric growth were recorded by other researchers:

Bala *et al.* (2009) on the study of Ichthyofauna of Daberam reservoir in Katsina State reported a negative allometric growth for *T. zilli* species recording a 'b' value of 2.19. Mossad (1990) on Biological Studies on five fish species from Lake Qarun, Egypt recorded a 'b' value of 2.9 for *T. zilli* in blackfish water. Ibrahim *et al.* (2008) on effect of environmental conditions of Abu-Zabai Lake on some biological, histological and quality aspects of fish in Cairo reported a negative allometric growth with a 'b' value of 2.92 for *T. zilli* in brackish water. Karal Marx *et al.* (2013) on Length-weight relationship of Nile tilapia, *Oreochromis niloticus* from Barur Reservoir recorded a slope value (b) estimated for both sexes to be 2.313. Waithaka *et al.* (2017) reported a slope b of length-weight relationship of 2.86 for combined sexes of *O. niloticus* from Lake Naivasha, Kenya. Asmamaw *et al.* (2019) on Length weight relationship and condition factor of Nile tilapia, *Oreochromis niloticus* in Kuka Reservoir, Ethiopia, record 'b' values of 3.2095 (males), 2.868 (female) and 3.1703 for combined genes. Riedel *et al.* (2007) reported

Comment [M6]: This citation is not included in the references.

Formatted: Font: Italic

Comment [M7]: This citation is not included in the references.

that during various stages in growth, the fish can record an Isometric growth ($b=3$), negative allometric growth ($b<3$) or positive allometric growth ($b>3$). The actual relationship between length and weight may part from the cubic value 3 and this may be due to environmental condition in which the animal lives and also due to the physiological condition of animal.

Ogunola *et al.* (2017) reported that negative allometric growth pattern could be attributed to low food items for fish species in the ecosystem or reduction of their body size to escape predation or high fishing mortality or intensity and adverse effects of oil pollution on their growth (Law, 2000, Chilaka *et al.*, 2014).

It could also be as a result of competition for food resources in the ecosystem which could have affected their growth due to limited nourishment available to individuals. The negative allometric growth recorded in this study is different from the results of others: Bankole (1989) on biology study in selected fish species of Tiga Lake Kano State,

reported a 'b' value of 3.10 for *O. niloticus*. Fafioye and Oluajo (2005) who studied the length-weight relationship of the fish species in Epe Lagoon, Lagos, Nigeria, reported that *O. niloticus*

recorded a 'b' value of 3.04 for *O. niloticus*. Steve and Okeyo (2019) on assessment of Length-Weight relationship and Condition factor of Nile Tilapia (*O. niloticus*) in cage and open waters in Winam Gulf of Lake Victoria, Kenya, reported that the slope "b" of the regression analysis in

both habitats revealed a positive allometric growth; 3.16 and 3.09 for wild and Cage respectively. Boghoyinge (1984) on some observations on aspects of biology of *Tilapia marine* and culture of tilapia in freshwater ponds in Port Harcourt recorded a 'b' value of 3.21 for

Tilapia marine. Ojuoket *et al.* (2000) reported a b value of 3.14 for *O. niloticus* from Lake Victoria, Kenya. Njimet *et al.* (2006) recorded a b value of 3.07 – 3.32 for *O. niloticus* harvested from Lake

Victoria, Kenya. Yongo *et al.* (2018) recorded a b value of 3.01 for *O. niloticus* from Lake Victoria, Kenya. Yongo *et al.* (2018) reported that the b value of the length-weight relationship

Comment [M8]: These citations are not included in the references.

Comment [M9]: This citation is not included in the references.

Comment [M10]: This citation is not included in the references.

Comment [M11]: This citation is not included in the references.

Formatted: Font: Italic

Comment [M12]: This citation is not included in the references.

was 2.98, 3.01 and 3.01 for males, females and combined sexes respectively. Steve Omari Ngodheet *al.* (2019), in their studies investigate the difference between the length and weight of *O. niloticus* in cage and open waters. The slope 'b' of the regression analysis in both habitats revealed a positive allometric growth (3.16 and 3.09) for wild and cage. However, the b-values recorded here which was negative allometric but within the limit of 2 and 4 were in agreement with those recorded by Ontaet *al.* (2014) and Waithakaet *al.* (2017) on *O. niloticus* from Lake Naivasha who recorded 2.30 and 2.86 respectively for combined sexes and Mossad (1990) on a related species *T. zilli* from Drackish water in Egypt. Feeding behavior of fish and morphological changes due to age may also cause the coefficient of regression on logarithm of length to depart substantially from 3. Pauly and Gayanilo (1997) suggested that b-values may range from 2.5 to 3.5 while Hile (1936) and Martin (1949) observed that the values of the regression coefficient 'b' usually lies between 2.5 and 4.0 and for an ideal fish to maintain its shape b=3 is required. The b values recorded in this study fall within the recommended range of 2.5 to 4.0. Higher mean b-value was recorded in males, however, there was no significant difference between the b-values of males and female ($p>0.05$) during the study with the respective exponential relationships. Intersexually, the b-values gotten for males and females in this research were higher than those gotten from the same species by Asmawaet *al.* (2019) in Kuka Reservoir, Ethiopia; Waithakaet *al.* (2018) in Lake Naivasha and Yongoet *al.* (2018) in Lake Victoria, Kenya, who recorded b-values of less than 2 for males and females.

The less negative allometric growth in females signify that the rate of weight gain is less than the increase in length probably due to the timing of the batch where females empties their gonad losing energy for egg production hence less weight in relation to their length. The negative allometric growth observed here might be owing to various factors, including seasons,

Comment [M13]: This citation is not included in the references.

Comment [M14]: This citation is not included in the references.

Comment [M15]: This citation is not included in the references.

Formatted: No underline

environmental parameters, and the presence of food, feeding ratio, habitat, sex and physiological conditions of the fish. Negative allometric growth pattern could be attributed to low food, items for fish species in the ecosystem or reduction of their body size to escape predator or higher fishing mortality or intensity and adverse effect of oil pollution on their growth. Chilaka *et al.* (2014) also postulated that negative allometric growth might be as a result of competition for food resources in the ecosystem which could have affected their growth due to limited nourishment available to individuals. Okeyo (2019) reported that the variation in growth pattern could be due to different ecological parameters during the study periods which comprises of several biotic and abiotic interactions such as gear selectivity, sex and difference season of the year can affect the length-weight relationship. Consequently, higher b-value was recorded in the wet season but there was no significant difference between the dry and wet season ($P > 0.05$). The seasonal b-values recorded here were also higher than those reported for a related species *T. zilli* whose b-values for dry and wet seasons were below ~~than two as those~~ observed by Mahomondet *al.* (2011) in Lake Timsha, Egypt. However, the b-values obtained here were lower ~~than those~~ obtained for the same species in Lake Victoria, Kenya, by Ojuoket *al.* (2000) and Njiru *et al.* (2006) who recorded ~~isometric~~ growth. The b-values were also lower than those gotten for *O. niloticus* by Bankole (1989) and Fafioye and Oluojo (2005) who recorded ~~isometric~~ growth in Tiga Lake, Kano state, Nigeria and Epe Lagoon, Lagos state, Nigeria respectively. Imam *et al.* (2010) on ~~length-weight~~ relationship and condition factor of four fish species from Wasai Reservoir in ~~k~~Kano, Nigeria, recorded a negative allometric growth reporting a 'b' ~~figure value~~ in *Tilapia zilli* of 1.53 and 2.5 for wet and dry seasons respectively. Haruna (2006) on ~~length-weight~~ relationship of four fish species from Magaga Lake, Kano, Nigeria, recorded a 'b' value of 2.7 (wet season) and 3.2 (dry season) for *T. zilli*. In Qua Iboe River ~~E~~estuary, the intersexual

Comment [M16]: This citation is not included in the references.

Comment [M17]: This citation is not included in the references.

Comment [M18]: This citation is not included in the references.

Comment [M19]: This citation is not included in the references.

Comment [M20]: This citation is not included in the references.

Comment [M21]: This citation is not included in the references.

Comment [M22]: This citation is not included in the references.

and seasonal pattern in length-weight relationship of *O. niloticus* revealed that the length-weight exponent for male, female and combined sexes were negatively allometric signifying that the b-values deviated significantly from isometric. The intersexual and seasonal negative allometric growth recorded in this study signifies that the fish did not grow symmetrically as they became thinner with increase in length (Abiaoboet *al.*, 2021).

The results revealed variability in b-values with a peak in October and a trough in March. All the months recorded mean b-values that were less than isometric implying that they recorded negative allometric growth. A positive correlation coefficients obtained here showed there was correlation between the total length and body weight measurements of the fish, meaning the fish increase in the body weight as it grows in total length. Similar trend were observed in *O. niloticus* by Fafioye and Oluayo (2005) in Epe Lagoon, Lagos; Waithakaet *al.* (2017) in Lake Naivasha, Kenya; Ojuokeet *al.* (2000); Njiruet *al.* (2006) and Yongoet *al.* (2018) in Lake Victoria, Kenya.

5. Conclusion

The results of the length-weight relationship of *O. niloticus* from Qua Iboe River Estuary, Nigeria, exhibited negative allometric growth. The species become thinner as they grow older. The b value shows negative allometric growth. $b < 3$. The females were sparingly found in the wet season indicating that the wet season is the breeding period of the species while the dry season is fishing time. ~~The results of the length-weight relationship of *O. niloticus* from Qua Iboe River Estuary, Nigeria exhibited negative allometric growth. The species become thinner as they grow older.~~ The species exhibited seasonal trend in sex differentiation, size structure, growth pattern and general well-being. These distinctions could serve as precursors for

Comment [M23]: These citations are not included in the references.

Formatted: Line spacing: Double

Formatted: Font: 12 pt

development, culture, management and sustainability of the species in Qua Iboe River Estuary, Nigeria. The *Oreochromis niloticus* from Qua Iboe River Estuary, Nigeria, is a commercial species of financial value and the species supplement the food and protein need of the surrounding communities. This study provides the basic information, which could enhance production potential of *O. niloticus* and its sustainable development, culture and management in Qua Iboe River Estuary, Nigeria.

Formatted: Font: 12 pt

UNDER PEER REVIEW

6. REFERENCES

Abari, M.A. Usman, M. and Yusuf K. (2015) Food and feeding habit of Nile Tilapia (*Oreochromis niloticus*) in Doma Dam, Nasarawa State, Nigeria Production —Agriculture and Technology 11 (1):67-74.

Formatted: Justified

Formatted: Font: Italic

Comment [M24]: This reference is not included in the text.

Akpan A.W., Preliminary Investigation into the Physical hydrology of Qua Iboe River in South Eastern Nigeria Trans. Nig. Soc Biol conserve 1991 (2):113-122.

Comment [M25]: This reference is not included in the text.

Anderson, R. O., Gutreuter, S. S. (1985). Length-weight relationship and associated indices. American fisheries society, pp283-300.

Comment [M26]: This reference is not included in the text.

Berth Pena, Jose Luis Gomez, Isaias Hazarmabeth Salgado – Ugarte.

Comment [M27]: This reference is not included in the text.

Beyer, J. E (1978). On length width relationship computing the mean weight of the fish of a given length class. *Fishbyte*, 5(1): 11- 13

Carlander, K.D., 1969, Handbook of freshwater fishery biology, volume1. The Iowa State University Press, Ames. Iowa, 752p. DOI/ISBN, 0-8138.

Formatted: Justified

Comment [M28]: This reference is not included in the text.

Dulcic, J. and Icratjevic, M. (1996). Weight-length Relationships for 40 fish species in the Eastern Adriatic (croatian waters). *Fisheriesresearch*, 28, 243-251.

Formatted: Justified, Indent: Left: 0", Hanging: 0.5"

Ecoutin, J. M. and Albaret, J. J. (2003). Length-Weight relationship of 52 fish species from West African Estuaries and Lagoons. *Cybiu*, 27, 3-9.

Ekpo, I. M. Essien-Ibok, M.A. and Nkwoji, J.N. (2014) Food and Feeding habits and condition factor of fish species in Qua Iboe River Estuary, Akwalbom State, South Eastern Nigeria.

Formatted: Justified

International Journal of Fisheries and Aquatic Studies 2014; 2(2):38-46.

Comment [M29]: This reference is not included in the text.

F. Witte, PC Gondswaard- Visserij (Netheriands), 1985 – agris.fao.org.

Comment [M30]: This reference is not included in the text.

Fafioye, O. O. and Oluajo, O. A. (2005). Length-weight relationship of four fish species in Epe lagoon, Nigeria. *African Journal of Biotechnology*.

Gondswaard K.P.C and F.Witte, 1997. The cat fish fauna of Late Victoria after the Nile perch upsurge. *Environmental Biology Fishes* . 49(1): 21-43.

Comment [M31]: This reference is not included in the text.

Gregory, S. (1974), *Statistical Methods and the Geographer*, Longman, London.

Formatted: Justified

Haruna, M. A. (2006). Length-weight relationship of four fish species *Chichlidar* from Magala Lake, Kano, Nigeria. *REST Journal*, 3(3): 109 - 111.

Hile, R; 1963-1936 Age and growth of the Cisco, *Leucichthys artedi* (Lesure) in the Lakes of North Eastern highlands Wisconsin Bull V. S. Bur Fish 48 – 217.

Formatted: Font: Italic

Ibrahim, S.M., K.A.S. Shalloof and H.M. Salama, (2008). Effect of environmental conditions of Abu-Zabal Lake on some biological, histological and quality aspects of fish. *Global Vet.*, 2: 257-270.

Formatted: Justified

Ighwela A., Ahmed B., Abol-Munafi B (2011). Condition factor as an indicator of growth and feeding intensity of Nile Tilapia fingerlings (*Oreochromis niloticus*) fed on different levels of maltose, *American-Eurasian Journal of Agriculture and Environmental Sciences*, 11:559-563.

Comment [M32]: This reference is not included in the text.

Imaobong Ekpo, Mandu A, Essien-Ibok, Joseph Nkwoji food and feeding habits and condition factor of fish species in Qua Iboe River Estuary, Akwalbom State, Southeastern Nigeria. *Int. J. of fish Aquatic Studies* 2014;2 (2) : 38- 46.

Comment [M33]: This reference is not included in the text.

K, Karal Marx, T. Vaitheeswaran, P. Chidambarm, S. San ~~kk~~Karram and P. Karthiga (2013). Length-weight Relationship of Nile ~~tilapia~~tilapia(*Oreochromis niloticus*(Linnaeus, 1755) Family: Cichlidae) Department Fisheries Biotechnology, Fisheries College and ~~R~~Research Institute Tamil Nadu Fisheries University, Thoothukudi 628 008.

Kaufman, L.S. (1992) Catastrophic change in species- Rich fresh water ecosystems; The lesson of Lake Victoria. *Bio Science*, 42, 846-858.

Comment [M34]: This reference is not included in the text.

Kharonizam, M. Z. and Norma-Rashid, Y. (2002). Length-weight relationship of mudskippers (Gobiidae: oxudercinae) in the Coastal area of Selangor, Malaysia, NAGA. *World fish Center, Quarterly*, 3, 20-22.

Comment [M35]: This reference is not included in the text.

King, R.P. Udoidiong O.M., Egwali E.C., Nkanta N.A. ~~Some~~Some aspects of the tropic biology of *Illisha Africana* (Teleosta: Clupeidac) in Qua Iboe Estuary, Nigeria. *Cybiu* 1990, 261-274.

Comment [M36]: This reference is not included in the text.

Lagler, K. F., Bardach, J. E., Miller, R. R. and Passion, D. R. M. (1977). *Ichthyology* 2ndEdn, Denver: John Wiley and Sons pp:506.

Formatted: Font: Italic

Le Cren, E.D. (1951). The length-weight relationship and seasonal cycle in gonadal weight and condition in the Perch (*Percal fluviatilis*). *AnEcol.* 20:201-219.

Comment [M37]: This reference is not included in the text.

Morey, G. J. Moranta: E. Massuti; A. Grau, M., Linde, Reira, F., and Morales –Nin B. (2003). Length-weight relationships of Littoral to low slope fishes from the Western Mediterranean. —Fish Resources: 62:89-96.

Formatted: Font: Italic

Formatted: Justified

~~Mosaad~~Mossad, M. N. M. (1990). Biological studies on five fish species from Lake Qarun, Egypt Length-weight relationship and condition factor. *Journal of Zoological society.* 21: 331-344.

Comment [M38]: This reference is not included in the text.

Moutopoulos D. K. and Stergiou, K.I. (2002). Length and weight-length relationships of fish species from the Aegean sea (Greece). *Journal of Applied Ichthyology* —18, 200-203 *Cross ref—google scholar.*

Formatted: Justified

Comment [M39]: This reference is not included in the text.

Nehemia, A. Maganira, J.D. and Rumisha C. (2012). Length-weight relationship and condition factor of *Filapia* species grown in Marine and fresh water ponds. *Agriculture and Biology—Journal of North America*. 3(3):117-124.—[Htt://www.schub.org./ABJNA](http://www.schub.org./ABJNA).

NsikakOkonAbiaobo, IdopiseAbasiEkpeAsuquo, IfeanyiNtasiobiEjiosu, Etimfon Joseph James (2021) Aspects of the Biology of *Periophthalmus barbarous* (mudskipper), from Jaja creek, Nijer Delta, Nigeria, *Ecology and Evolutionary Biology* volume 6, pp:15-22

Formatted: Justified, Indent: Left: 0", Hanging: 0.49"

Formatted: Font: Italic

Nyaku, R. E., Okayi, R. G., Yem, I. Y. and Abdulrahman, M. (2008). Length-weight relationship and condition factors of three fish species in Benue river, *Nigeria Best Journal*, 5 (3): 204-206.

Ogunola O.S, Olawale Ahmed Onada2016-2017. Improving food security in an eco-friendly manner through integrated aquaculture. *Open Access Library Journal*, Vol. No.3.

Olurin, K. E. Aderibigbe O.A. (2006). Length-weight Relationship and condition factor of pond Reared Juvenile *Oreochromis niloticus*. *Journal of Zoology* 1:82-85.

Formatted: Font: Italic

Pauly, D. G.R. Morgan (editors). 1987. Length-based methods in fishing research. ICLARM conference proceedings 13, 468p. International centre for living Aquatic Resources Management, Manila, Philippines, and Kuwait Institute for Scientific Research, SAFAT, Kuwait.

Formatted: Justified, Indent: Left: 0", Hanging: 0.49"

Pauly, D. (1983). Some simple methods for the assessment of tropical fish stocks, *FAO fisheries Technical paper*,(234), FAO, Rome, Italy.

Pauly, D. (1984). Fish population dynamics in tropical waters: a manual for use with programmable calculators. (*ICLARM studies and Reviews* 8). ICLARMs, Manila, Philippines, pp 325.

Pauly, D. (1993). Linear regressions in Fisheries Research Journal of the Fisheries Research Board of Canada, 30:409-434.

Formatted: Justified

~~Pauly, D. (1993). Linear regressions in Fisheries Research Journal of the Fisheries Research Board of Canada, 30:409-434.~~

Formatted: Justified, Indent: Hanging: 0.5"

Pauly, D. and Gayalino, F. C. Jr (eds) (1997). FAO-ICLARM stock assessment tools (FiSAT): Reference manual. FAO *computerized information series* (fisheries) no. 8. FAO. 262p.

Formatted: Space Before: 0 pt

~~Priede, I. G. and Secombes, C.J. (1988). The biology of fish production. Department of Zoology, Jillydron Avenue, University of Aberdeen, Aderdeen AB 92 TN.~~

Comment [M40]: This reference is not included in the text.

~~Reynold, T. D (1968). The biology of the clupeids in the new volta. In: man-made lakes. The Accra symposium. Ghana University press, Accra. 120pp.~~

Comment [M41]: This reference is not included in the text.

Riedel, R. Caskey, L.M. Hurlbert, S.H. (2007). Length-weight relations and growth rates of dominant fishes of the salt on Sea: implications for Predation by fish eating-birds. Lake and Reservoir Management 23:528-535.

Formatted: Justified

~~Riedel, R. Caskey, L.M. Hurlbert, S.H. (2007). Length weight relations and growth rates of dominant fishes of the salt on Sea: implications for Predation by fish eating birds. Lake and Reservoir Management 23:528-535.~~

~~Riedel, R., Caskey, L. M., Hurlbert, S. H. (2007). Length-weight relations and growth rates of dominant fishes of the Salton Sea: implications for predation by fish eating birds. Lake and Reservoir Management 23:528-535.~~

Roest F. C. Frielink, A. O. (1985) *Las Palmas Survey Landings of cephalopods and fish from West African waters.*

Comment [M42]: This reference is not included in the text.

Seyoum T.A. Study the practice and challenges of Lake management in Ethiopia. The case of ~~Koko~~ reservoir: An Independent master of science thesis presented to the department of Urban and Rural Development, unit of Environment communication as Swedish University of Agriculture Science, ~~Uppsala~~ Uppsala, ~~Wsedn~~ Sweden P.P 115.

Formatted: Justified

Comment [M43]: This reference is not included in the text.

Steve, Omari Ngodhe and OkeyeOwuor J.B. (2019) Assessment of LWR and condition factor of Nile ~~Filipai~~ *tilapia* (*Oreochromis niloticus*) in cage and open waters in winam Gulf of L, Victoria, Kenya.

Formatted: Font: Italic

Tesch, W. (1971) Age and growth in methods of assessment of fish Production in fresh waters. ~~Ricker~~ W.E. (ed) 2nd edition. Oxford: Blackwell, Pp. 97-130. Google Scholar.

Comment [M44]: This reference is not included in the text.

Turay, I. (1993). Investigation of various Aspects of the biology of the mudskipper, ~~Pperiophalmus~~ *Kkoerevteri*, BSc.Thesis, fourah bay college, University of ~~Ffreetown~~ Freetown, ~~Ssierra~~ Sierra Leone.

Formatted: Justified, Indent: Left: 0", Hanging: 0.5"

Formatted: Font: Italic

Formatted: Font: Italic

Comment [M45]: This reference is not included in the text.

Udo, M. T. (2002b). Intersexual plasticity in aspects of the biology of the mudskipper, swamps of Imo Estuary, Nigeria). *Environmental Science*(China), 14 (1): 95-101, PMID: 11887327.

Comment [M46]: This reference is not included in the text.

Udofia, E. P. (2011). *Applied Statistics with Multivariate Methods*. Immaculate Publications Limited, Enugu, Nigeria, pp. 406 – 408.

Ukpong, I. E. (1995). An ordination study of mangrove, swamp communities in ~~W~~ West Africa. *Vegetation* 116,147-159.

Waithaka, E., Mugo, J., Obegi, B., and Keyombe, J., L. (2017), Socio-economic of the re-introduced *Oreochromis niloticus* in Lake Naivasha (Kenya). *International Journal of Fisheries and Aquatic*.

Formatted: Font: Italic

Yongo, E. Outa N. Kito K. and Matsushita Y. (2018) studies on the body of Nile tilapia (*Oreochromis niloticus*) in Lake Victoria, Kenya: In a light of intense pressure. *African Journal of Aquatic Science*, 43 295-198.

UNDER PEER REVIEW