

Case study

Intrathoracic Gastric Volvulus: A Case Report and Review of Literature

Abstract

Background:

A volvulus has been defined as a rotation of a hollow organ more than 180 degrees around its axis leading to an obstruction of variable degrees, ischemia, perforation, and necrosis. Gastric volvulus, in particular, is an uncommon entity, associated with high mortality (ranging between 30-50%). Herein, we report a case of strangulated paraesophageal hernia complicated by intrathoracic gastric volvulus, along with summarizing pertinent literature.

Case presentation:

A 61-year-old, morbidly obese female, who is known to have diabetes mellitus, hypertension, and glucose-6-phosphate dehydrogenase deficiency, presented with epigastric abdominal pain. The pain onset was associated with nausea, vomiting, and heartburn. Computed tomography scans of the chest and abdomen confirmed the diagnosis of mesentrio-axial gastric volvulus secondary to a strangulated paraesophageal hernia. The condition was managed as a surgical emergency where the herniating abdominal organs were placed back into the abdominal cavity and the hiatal defect was approximated with simple stitches.

Conclusion:

Gastric volvulus remains a diagnostic challenge due to its rarity and its unspecific symptomatology. The presence of Borchardt's triad should raise the suspicion of underlying gastric volvulus. A computed tomography scan is considered to be the gold standard diagnostic modality and endoscopic decompression is recommended before the definitive surgical intervention.

Keywords:

Gastric volvulus; Hiatal hernia; Strangulation

1. Introduction

Gastric volvulus is a pathological rotation of the stomach of more than 180 degrees (1). Gastric rotation could be either around its long or short axis leading to gastric inlet and outlet obstruction of variable degrees (2). The patient could present as a case of surgical emergency of chronic abdominal symptoms (1). Borchardt's triad, consisting of severe epigastric abdominal pain, vomiting and inability to pass the nasogastric tube presents in about 70% of cases and is believed to be characteristic of gastric volvulus (1,3-5). Gastric volvulus is associated with complications such as ulceration, ischemia, gastric perforation, gangrene, and in few reported cases pancreatic necrosis (6), omental avulsion (7), and even splenic rupture (8). Due to rarity and the difficulty of establishing the diagnosis, gastric volvulus has been associated with high mortality ranging between 30-50% (9). Herein, we report a case of strangulated paraesophageal

hernia complicated by intrathoracic gastric volvulus, along with summarizing pertinent literature.

2. Case Presentation

3. A 61-year-old, morbidly obese female, who is known to have diabetes mellitus, hypertension and glucose-6-phosphate dehydrogenase deficiency, was referred to our facility as a case of strangulated para-esophageal hiatal hernia with intrathoracic gastric volvulus. Upon presentation, she was complaining of a sudden epigastric abdominal pain, for one-day duration. According to her, it was severe, colicky in nature, not even responding to analgesia. Significantly, two weeks prior to the attack of abdominal pain, she had several episodes of vomiting that became more frequent after the pain onset. It was also associated with nausea and heartburn, however, there was no change in bowel habits, fever or recent weight change. On examination, the patient was conscious, alert and oriented to time, place and person. She was moderately dehydrated but vitally within normal range except for tachycardia with a pulse reaching up to 122 beats per minute. Upon local examination of the abdomen, it was found to be slightly distended with moderate epigastric tenderness. Examination of the chest revealed a decreased vesicular breath sound over the left hemithorax with unequal air entry bilaterally.
- 4.
5. All elements of **the** complete blood count were normal. Renal function parameters, on the other hand, demonstrated evidence of acute kidney injury, with creatinine exceeding 500 $\mu\text{mol/L}$ and urea of more than 20 mmol/L . As the patient was having several episodes of vomiting, an expected picture of venous blood gasses demonstrated metabolic alkalosis, with bicarbonate of 32 mmol/L . Subsequently, hypokalemia with potassium of less than 3 **mmol/L** was also observed. Radiological modalities were utilized to confirm the diagnosis. Initially, an abdominal x-ray was obtained and a portion of the stomach was found herniating into the left hemithorax as illustrated in **figure 1**. The contrast shown was given by the primary team before referral and can be seen accumulating in the stomach, not passing beyond the pyloric sphincter. Endoscopy was also done and demonstrated the presence of paraesophageal hiatal hernia with gastric volvulus. Additionally, computed tomography (CT) scans of the chest and abdomen did not only confirm the diagnosis of gastric volvulus secondary to hiatal hernia but also were able to identify the exact type of the volvulus. As shown in **figure 2**, the fundus of the stomach, along with part of the gastric body **is** present within the thoracic cavity. The antropyloric segment can also be seen located superior to the stomach fundus, clearly suggesting a gastric volvulus, mesentrio-axial in type.
- 6.
7. After establishing the diagnosis, the patient was resuscitated in terms of intravenous fluids, and analgesia. Intraoperatively, the stomach along with the omentum were found herniating into the thoracic cavity through the diaphragm. A diaphragmatic defect at the site of the hiatus opening, measuring around 5x3 cm, was also evident upon exploration. Herniating organs were placed back into the abdominal cavity, and the stomach was **detorted**. The diaphragmatic esophageal hiatus was approximated using

Prolene sutures. **Figure 3** demonstrates the herniated abdominal structures after being repositioned back into the abdominal cavity. Postoperatively, the patient was shifted to **the** intensive care unit where inotropic support was required for a couple of days. Thereafter, she demonstrated a significant clinical improvement in terms of tolerance to oral feeding and reduction in previously experienced symptoms. Renal parameters returned to normal levels also as the causative factor has been treated. **On day** six postoperative, the patient was discharged in a satisfactory condition. She was seen in the clinic one week after and reported complete resolution of symptoms.

8. Discussion

A volvulus has been defined as **a** rotation of a hollow organ more than 180 degrees around its long or short axis leading to an inlet and outlet obstruction of variable degrees leading to ischemia, perforation and, necrosis. ^(1,2) Gastric volvulus is considered a rare entity that can occur in children and adults, with higher rates of prevalence among people in the 5th decade of life ^(2,4,10) with no reported gender preference. ⁽¹¹⁾ It is known that the most common organ that undergoes volvulus in adults is the sigmoid colon and followed by the caecum. Gastric volvulus has been first described in the literature by Berti et al. in 1866 as a finding of an autopsy. Later in 1897, Berg et al. reported first successful surgical management of gastric volvulus. ⁽¹⁾

Gastric volvulus can be classified depending on the cause, **the** axis of its rotation, and the chronicity. First, primary gastric volvulus might result from adhesions, tumors or failure of gastric ligaments. On the contrary, secondary gastric volvulus which happens in 70% of the cases could be a consequence of functional or anatomical abnormalities of the stomach or its surrounding organs. ^(2,9, 10) The axis of rotation can be divided as either organo-axial, mesentero-axial or a combination of both. Organo-axial volvulus is a longitudinal rotation of the stomach around the axis connecting the gastro-esophageal junction of the pylorus, showing the greater curvature superior to the lesser curvature. This is the most common type which presents in 60% of the cases. ^(2,12) While mesentero-axial volvulus is associated with a diaphragmatic hernia, where the stomach rotates **in a** perpendicular axis to its longitudinal axis, showing the stomach in **a** vertical position, making its antrum and pylorus laying antero-superior to the gastro-esophageal junction. ^(13,14) This type of rotation is usually partial, less than 180 degrees, and presents with vague symptoms making the diagnosis more challenging. A combined gastric volvulus in which the stomach rotates in mesenterio-axially and organo-axially is rare and has been reported in **a** patient with chronic gastric volvulus. ^(4,15)

Gastric volvulus could be acute or chronic, acute volvulus patients typically present with Borchardt's triad, as seen in 70% of the cases. ⁽⁷⁻⁹⁾ This presentation should raise the suspicion of gastric volvulus as an etiological factor. **On the contrary** chronic volvulus, patients might be asymptomatic or have vague non-specific symptoms like epigastric fullness, heartburn or, dysphagia. Those symptoms might resemble those of gastritis, cholecystitis or, peptic ulcer disease leading to delayed **ed** diagnosis. ⁽¹⁶⁾ In our case the patient presented with acute gastric volvulus secondary to para-esophageal hernia and showed mesentero-axial volvulus.

Although an uncommon disease, it might be suspected if a chest radiograph shows retrocardiac air-filled mass suggestive of an intrathoracic stomach herniating through the diaphragm or an abdominal radiograph may show a single large gas shadow with a paucity of distal bowel gasses, consistent with a distended fluid-filled stomach. Those findings indicate a rotated stomach. ^(4,14) According to Singham et al. CT scan should be the first line of investigation and is considered the gold standard radiologic modality to establish the diagnosis. A CT scan can identify the type of gastric rotation and locate the transitional point, aiding in planning the surgical management. ⁽¹⁷⁾

No optimal treatment strategy for gastric volvulus has been developed due to the variation of clinical course between cases. In acute gastric volvulus, the patient might require resuscitation and correction of electrolyte abnormalities before definitive management. ⁽¹⁸⁾ In several studies, endoscopy and decompression have been recommended to facilitate identifying ischemia and relieving patient symptoms. ⁽¹⁹⁾ Surgery aimed to ensure gastric viability, define and address the cause of volvulus or repair concomitant defects as in our case (paraesophageal Hernia). If in case of ischemia or necrosis, partial or total gastrectomy is needed. ^(4,13) When there is no vascular compromise, de-rotation of stomach and gastropexy is recommended. In addition, when gastric volvulus is due to a secondary cause the underlying condition, should be addressed and treated. ⁽²⁰⁾ Laparoscopic approach is preferred due to the lower rate of complication, reduced hospital stay, and faster patient recovery. In chronic volvulus, a non-operative approach is recommended with percutaneous endoscopic gastropexy, especially for elderly patients who might not tolerate surgical intervention. ⁽¹⁰⁾

1. Conclusion

Gastric volvulus remains a diagnostic challenge due to its rarity and its unspecific symptomatology. The presence of Borchartd's triad should raise the suspicion of underlying gastric volvulus. A computed tomography scan is considered to be the gold standard diagnostic modality and endoscopic decompression is recommended prior to definitive surgical intervention.

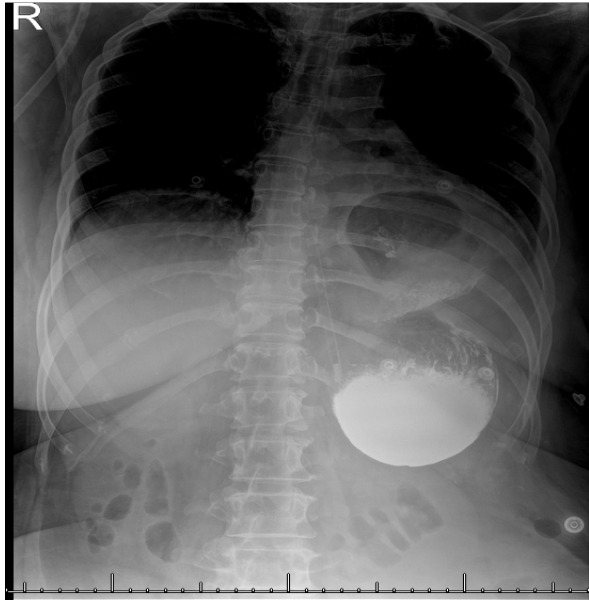
Consent:

written consent was obtained from the patient

Ethical Approval:

As per international standard or university standard written ethical approval has been collected and preserved by the author(s).

Figure 1 X-Ray image of left hemithorax



UNDER PEER REVIEW

Figure 2 (A and B) Computed Tomography (CT) scans of the chest and abdomen

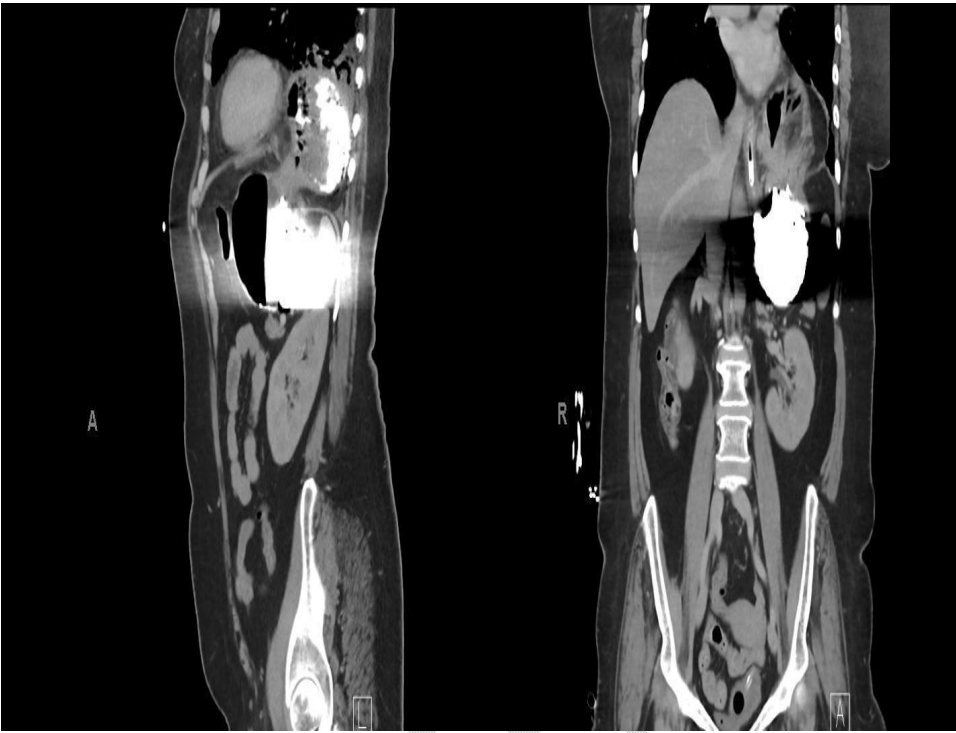
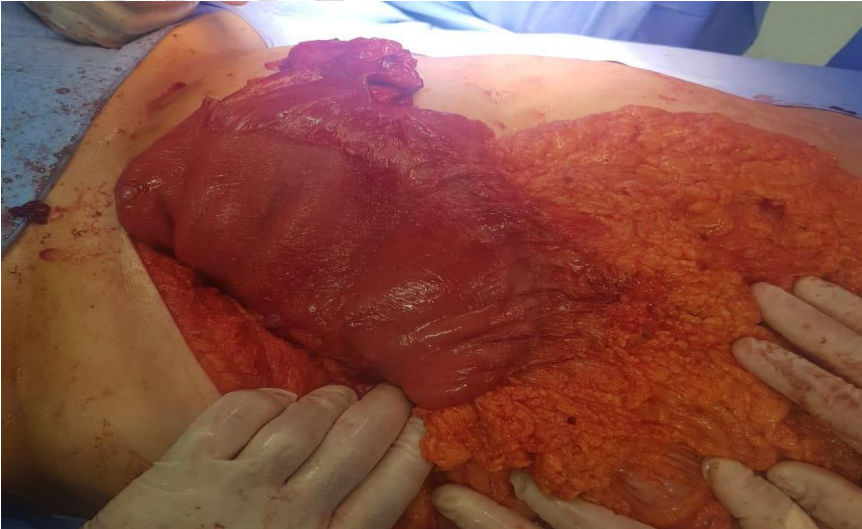


Figure 3 Herniated abdominal structures after being repositioned back into the abdominal cavity



References:

1. M. Akoad., 2002. *Gastric volvulus*, E-medicine. Available at: <http://www.imedicine.com.online.uchc.edu/Display> Accessed 1 March 2022.
2. Rashid, F., Thangarajah, T., Mulvey, D., Larvin, M. and Iftikhar, S., 2010. A review article on gastric volvulus: A challenge to diagnosis and management. *International Journal of Surgery*, 8(1), pp.18-24.
3. Qader, A. and Abdul Hamid, H., 2021. A case report of gastric volvulus, a rare cause of acute abdomen. *Radiology Case Reports*, 16(7), pp.1907-1911.
4. Chau, B. and Dufel, S., 2007. Gastric volvulus. *Emergency Medicine Journal*, 24(6), pp.446-447.
5. Borchardt, M., 1904. Aus Pathologie und therapie des magen volvulus. *Arch Klin Chir*, 74, pp.243-260.
6. Evans, S. R. T. & Sarani, B., 2002. Anatomic variants of the stomach: diaphragmatic hernia, volvulus, diverticula, heterotopia, antral web, duplication cysts and microgastria. *Gastrointestinal Disease: An Endoscopic Approach. 2*, pp.523-534.
7. Halvorson, D. and Edwards, J., 2006. Esophagus and stomach. *Essentials of Emergency Medicine*, pp.48–60.
8. Kotobi, H., Auber, F., Otta, E., Meyer, N., Audry, G. and H elardot, P., 2005. Acute mesenteroaxial gastric volvulus and congenital diaphragmatic hernia. *Pediatric Surgery International*, 21(8), pp.674-676.
9. Teague, W., Ackroyd, R., Watson, D. and Devitt, P., 2000. Changing patterns in the management of gastric volvulus over 14 years. *British Journal of Surgery*, 87(3), pp.358-361.
10. Ueda, S., Orita, H., Ito, T., Tokuda, S., Sakuraba, S., Kushida, T., Sakurada, M., Maekawa, H. and Sato, K., 2019. A Case of Laparoscopic-Assisted Percutaneous Endoscopic Gastrostomy (LAPEG) for Gastric Volvulus. *Case Reports in Medicine*. 3(4), pp.1-4.
11. McElreath, D., Olden, K. and Aduli, F., 2008. Hiccups: A Subtle Sign in the Clinical Diagnosis of Gastric Volvulus and a Review of the Literature. *Digestive Diseases and Sciences*, 53(11), pp.3033-3036.
12. Cardile, A.P. & Heppner, D.S. 2011, "Gastric volvulus, Borchardt's Triad, and Endoscopy: A Rare Twist", *Hawaii medical journal* (1962), 70(4), pp. 80-82.
13. Feldman, M., Friedman, L. and Brandt, L., 2020. *Sleisenger and Fordtran's Gastrointestinal and Liver Disease E-Book: Pathophysiology, Diagnosis, Management*. 11th ed. Elsevier, pp.192-193.
14. Rodriguez-Garcia, H., Wright, A. and Yates, R., 2017. Managing obstructive gastric volvulus: challenges and solutions. *Open Access Surgery*, 10, pp.15-24.
15. Miller, D., 1991. Gastric Volvulus in the Pediatric Population. *Archives of Surgery*, 126(9), p.1146.

16. Lopasso, F., Zilberstein, B., Bresciani, C., Kuga, R., Ceconello, I. and Gama-Rodrigues, J., 2009. Gastric volvulus: A review of 38 cases. *ABCD. Arquivos Brasileiros de Cirurgia Digestiva (São Paulo)*, 22(2), pp.96-100.
17. Singham, S. and Sounness, B., 2009. Mesenteroaxial volvulus in an adult: time is of the essence in acute presentation. *Biomedical Imaging and Intervention Journal*, 5(3) p.18.
18. Zuiki, T., Hosoya, Y., Lefor, A., Tanaka, H., Komatsubara, T., Miyahara, Y., Sanada, Y., Ohki, J., Sekiguchi, C. and Sata, N., 2016. The management of gastric volvulus in elderly patients. *International Journal of Surgery Case Reports*, 29, pp.88-93.
19. Light, D., Links, D. and Griffin, M., 2015. The threatened stomach: management of the acute gastric volvulus. *Surgical Endoscopy*, 30(5), pp.1847-1852.
20. Shukla, R., Mandal, K., Maitra, S., Ray, A., Sarkar, R., Mukhopadhyay, B. and Bhattacharya, M., 2014. Gastric volvulus with partial and complete gastric necrosis. *Journal of Indian Association of Pediatric Surgeons*, 19(1), p.49.

UNDER PEER REVIEW