

# **PREDICTION OF THE EXTENT OF FLOOD INDICATORS USED FROM THE SLOPE MAP IN THE RIVER FLOW AREA IN THE CITY OF SAMARINDA, EAST KALIMANTAN, INDONESIA**

## **ABSTRACT**

Flood disasters in Indonesia and Samarinda City in general are disasters that continue to occur every year. Information on the dangers and risks of flooding is really needed, including the type of flood, the possibility of a flood occurring, the extent of flood inundation, the depth and speed of the flood, and the level of damage (to life, property and economic activity). The aim of the research is to determine the extent of inundation and the potential for flooding in areas in the river basin in terms of slope maps. This research was carried out in the Karang Asam Kecil River Basin, Samarinda City, East Kalimantan Province, Indonesia. Research activities include: literature study, collection of primary and secondary data, data processing and analysis. The results of the research show that: (1) The area of inundation, namely in Air Hitam Subdistrict, is 77 hectares (2.85%), Air Putih Subdistrict is 81 hectares (3.00%), Bukit Pinang Subdistrict and Sidodasi Subdistrict are 1 hectare each. (0.04%), TelukLerong Ilir Village covering an area of 14 hectares (0.52%), and in TelukLerong Ulu Village covering an area of 7 hectares (0.26%); and (2) flood-prone areas in the Karang Asam Kecil sub-watershed occur in the Samarinda Ulu sub-district with an inundation area of 174 hectares and in the Sungai Kunjang sub-district an inundation area of 7 hectares.

**Keywords: Flood Inundation, Land Slope, Karang Asam Kecil Watershed**

## **INTRODUCTION**

Flood disasters in Indonesia are disasters that continue to occur every year. The climate change that is occurring has increased the frequency of hydrometeorological disasters in Indonesia, one of which is flood disasters [1]. Flooding is a water level that exceeds normal levels in a river and usually flows over the river bank and the overflowing water pools in a puddle area [2] and [3]. In general, flooding is defined as an event or situation where an area or land is inundated due to the increased volume of water during the rainy season.

According to [4], the causes of floods generally consist of (1) caused by nature itself which consists of erosion, sedimentation, and the physiographic/geophysical influence of rivers; and (2) caused by humans, namely inadequate river capacity/drainage and also changes in land use/inappropriate land conversion in riverbank areas which greatly contribute to surface flow. Furthermore, [5] stated that in general, floods that occur in Indonesia are caused by high rainfall causing water drainage systems including rivers, natural tributaries, and artificial channel systems to be unable to accommodate the accumulated rainwater that comes so that it overflows and causes flooding.

According to the United Nations Office for Disaster Risk Reduction (UNISDR, 2018), of all the disasters experienced in the world, floods occur frequently and claim the most lives. Based on data from the Center for Research on the Epidemiology of Disasters (CRED, 2018) shows that between 2008-2017 floods claimed an average of around 5,000 lives a year with more than one trillion USD in total losses or around 40% of all economic losses due to disasters. nature over the last four decades [6].

In Samarinda City, changes in land use patterns affect reducing the area's potential which is caused by the increasingly widespread use of land for buildings which causes a reduction in water catchment areas, puddles or floods occur because rainfall falls to the ground surface and cannot enter water channels because it is blocked by buildings. The roadside channel which is supposed to catch rainwater is not functioning properly so it will disrupt transportation.

Housing development in urban areas is not accompanied by spatial pattern regulations and local government supervision, as a result, community housing patterns grow irregularly. Increasing vulnerability cannot be separated from unplanned urban development. This indicates the increasingly dominant use of urban land as well as the narrowing of open space and the weak capacity of relevant agencies in disaster management, which are also factors causing flood vulnerability. In addition, the population growth factor also increases the density of the city, so the level of vulnerability of the area to the threat of flooding becomes higher.

Flooding in river basins is predicted to become a potential flood area if there is no serious treatment. In controlling river floods, it is necessary to carry out studies on programmed flood control. is a

river that flows through Samarinda City, most of the river banks are very sloping. Rivers often flood because the river channel is unable to accommodate the overflowing flood water.

One method to help flood management is carried out using numerical simulations. Numerical simulations of flood estimates cannot immediately get good results because inundation depends on topography and it changes over time. This makes flood prediction more complicated and requires a long process. Flood information with visual displays helps better planning. Geographic Information Systems (GIS) can be used to display flood areas, and can also be used to analyze flood inundation maps to produce flood damage estimates and flood risk maps (Hausmann and Webber, 1998; Clark, 1998 in Goel, et al. 2005). To estimate flood inundation with return period discharge, the use of GIS must be combined with hydrological/hydraulic methods [7].

This research aims to determine the extent of inundation and the potential for flooding in areas in the river basin in terms of slope maps.

## **METHODOLOGY**

### **1. Location**

This research was carried out in the Karang Asam Kecil River Basin, Samarinda City, East Kalimantan Province.

### **2. Research Object**

The research object is the Karang Asam Kecil Sub-watershed and conducting field surveys on the actual conditions of the Karang Asam Kecil River.

### **3. Research Activities**

Research activities include literature study, preparation, data collection, data processing, and analysis. The preparations made include providing a topographic map at a scale of 1:200,000 for Samarinda City, providing a map of the River Basin at a scale of 1:200,000 for the City of Samarinda, and providing a map of the inundation area at a scale of 1:150,000 for the City of Samarinda.

### **4. Data Collection**

The data collected are (a) collection and inventory of related data needed to identify biophysical conditions in the Karang Asam Kecil River Watershed, (b) collection and inventory of related data collected to identify activities in flood-prone areas in Flood-Prone Areas, and (c) collection of related supporting data, topographic maps, flood vulnerability maps, river basin maps.

### **5. Data Analysis**

- 5.1. Biophysical analysis of river basins includes the determination of slope slope, and slope class based on topographic maps with GIS applications
- 5.2. Analysis of Flood Prone Areas
  - 5.2.1 Determination of slope, flat, sloping, a bit steep, steep, and very steep slope classes based on topographic maps, flat and sloping slope classes that result in inundation using Geographic Information Systems (GIS) applications
  - 5.2.2 Determining a flood-prone area with inundation area based on a flood inundation area map using Geographic Information Systems (GIS) application.

## **RESULTS AND DISCUSSION**

### **1. Land Slope Condition**

The topographic condition of the Samarinda City area based on the Topographic Map/Slope of the River Basin is presented in Figure 1 and Table 1.

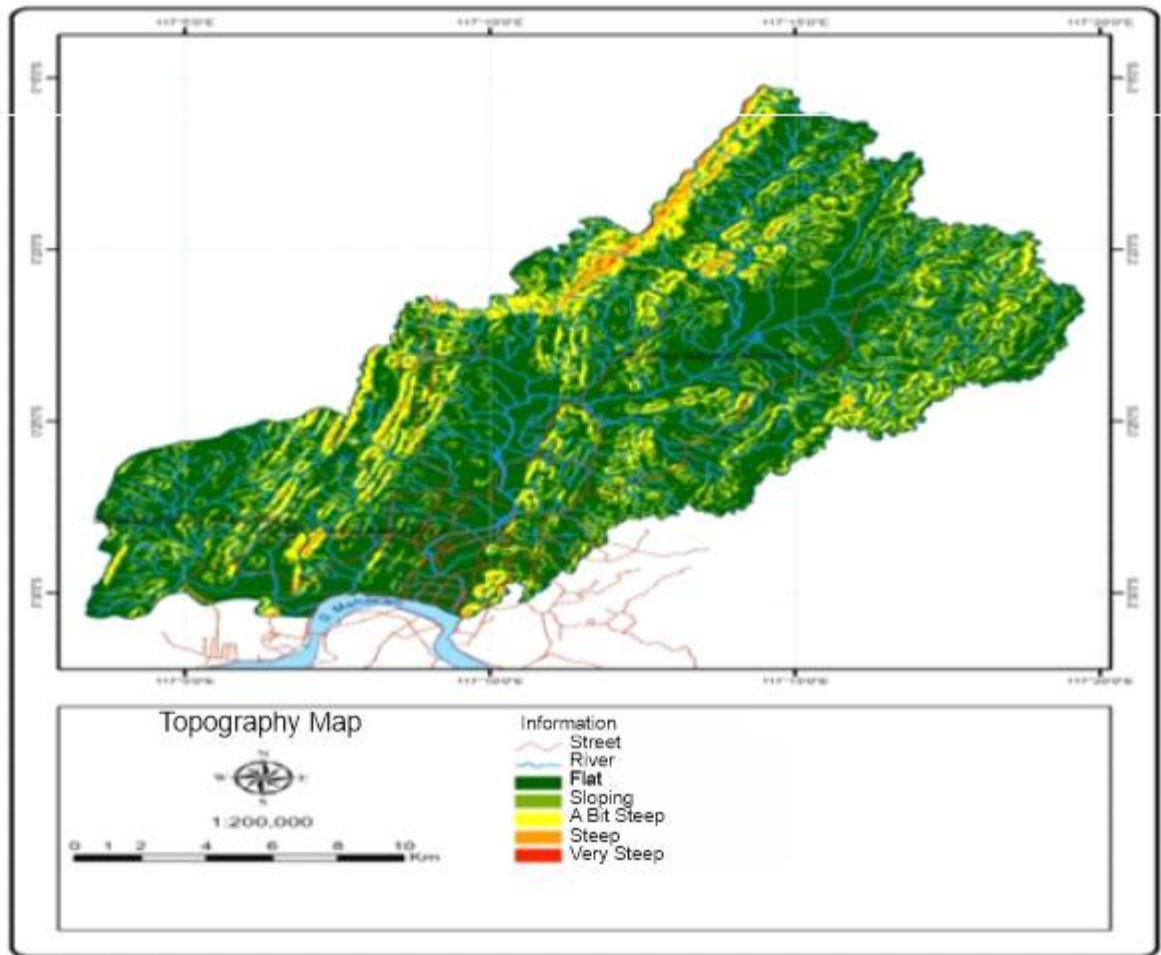


Figure 1. Topography/Slope Map of the River Basin

Table 1. Watershed Slopes

Sub-Watershed	Subdistrict	Slope (%)	Slope Class	Area (Hectare)	Percentage (%)
Karang Asam Kecil	Samarinda Kota	0-8	Flat	6,4	0,0161
		8-15	Sloping	4,1	0,0103
	Samarinda Ulu	0-8	Flat	1.153,3	2,8959
		8-15	Sloping	389,9	0,9790
		15-25	A Bit Steep	132,5	0,3327
		25-40	Steep	18,2	0,0457

	Samarinda Utara	0-8	Flat	0,1	0,0003
		8-15	Sloping	0,1	0,0003
	Sungai Kunjang	0-8	Flat	93,6	0,2350
		8-15	Sloping	6,7	0,0168
		15-25	A Bit Steep	1,6	0,0040
Total				1.806,0	4,5363

Source: Secondary data processed (2023).

Based on data on the slope of the River Basin in Samarinda Kota District, the slope is: 0-8%, which is classified as flat, covering an area of 6.4 hectares (0.0161%); slope class 8-15% is classified as sloping covering an area of 4.1 hectares (0.0103%). In Samarinda Ulu District there are slopes, namely: 0-8%, classified as flat, covering an area of 1,153.3 hectares (2.8959%); the slope class of 8-15% is classified as sloping covering an area of 389.9 hectares (0.9790%) the slope class of 15-25% is classified as a bit steep covering an area of 132.5 hectares (0.3327), and the slope class of 25-40% is classified as steep covering an area of 18.2 hectares (0.0457%). For flat and gentle slopes which result in puddles. In this class the slopes are a bit steep and steep which results in flooding and erosion of the river flow.

Furthermore, based on land cover/use data, it consists of bushes with an area of 691.2 hectares (1.7356%), mining of 65.9 hectares (0.1655%), residential areas of 486.2 hectares (1.2208%), open land of 119.2 hectares (0.2993%) and forest land cover of 152.6 hectares (0.3832%) and inundation area of 174 hectares (6.44%). Judging from the biophysical conditions, the relatively wavy/hilly topographic conditions, and the soil type conditions which are dominated by ultisol soil types that are relatively sensitive to erosion, the combination of these conditions can accelerate surface water runoff. As stated by [2], these conditions can accelerate surface water runoff.

## 2. Flood Inundation Conditions

The state of flood inundation in the river basin is presented in Figure 2 and Table 2.

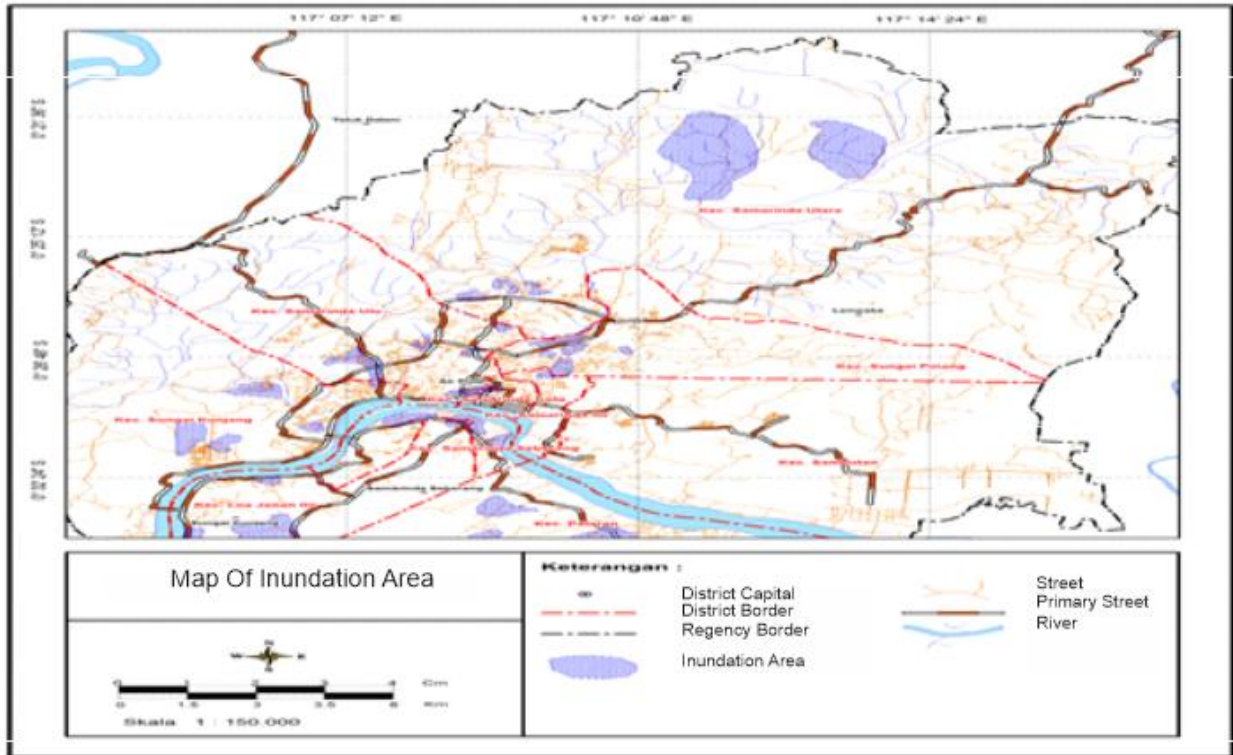


Figure 2. Map of the Area of Inundation in River Watersheds

Table 2. Area of Inundation Based on District Area in the Karang Asam Kecil River Basin

Sub- Watershed	Subdistrict	Village	Area (Hectares)	Percentage (%)
Karang Asam Kecil	Samarinda Ulu	Air Hitam	77	2,85
		Air Putih	81	3,00
		Bukit Pinang	1	0,04
		Sidodadi	1	0,04
		TelukLerong Ilir	14	
	Total	174	6,44	
	Sungai Kunjang	TelukLerong Ulu	7	0,26
	Total	7	0,26	

Source: Processed Secondary Data (2023)

Based on the research results (Table 2), it shows that in the Karang Asam Kecil watershed in the Samarinda Ulu District area, the predicted area of inundation is as follows: Air Hitam Village is 77 hectares (2.85%), Air Putih Village is 81 hectares (3.00%), Bukit Pinang Village and Sidodasi Village each covering an area of 1 hectare (0.04%), and TelukLerong Ilir Village covering an area of 14 hectares (0.52%). In Sungai Kunjang District, especially in TelukLerong Ulu Village, the area is 7 hectares (0.26%). The slope of the Karang Asam Kecil watershed is dominated by flat slopes (0-8%) and gentle slopes (8-15%), which makes this area always inundated and flooded due to slow surface runoff during the rainy season. According to [8], the slope of the slope affects the direction, rate, and concentration of rainwater, areas with relatively flat slopes will cause the area to always be inundated and flooded during the rainy season.[9] explained that the slope parameters that most influence flood events are areas with low slopes. This matter This is because a higher gradient will increase surface runoff which will slow down the infiltration process and water will pool into floods in areas with a low gradient.

## CONCLUSIONS AND RECOMMENDATIONS

### 1. Conclusion

Based on the results of research and discussion, it can be concluded that:

- a. The area of inundation, namely in Air Hitam Village, is 77 hectares (2.85%), Air Putih Village is 81 hectares (3.00%), Bukit Pinang Village and Sidodasi Village are each 1 hectare (0.04%), Subdistrict TelukLerong Ilir covers an area of 14 hectares (0.52%), and in TelukLerong Ulu Village an area of 7 hectares (0.26%).
- b. Areas prone to flooding in the Karang Asam Kecil sub-watershed occur in the Samarinda Ulu sub-district with an inundation area of 174 hectares and in the Sungai Kunjang sub-district an inundation area of 7 hectares.

### 2. Suggestions

In connection with the existence of flood-prone areas in the Karang Asam Kecil sub-watershed, which exceeds the river capacity, action is needed to normalize river channels including drainage networks, optimize water storage areas and water catchment areas.

## BIBLIOGRAPHY

- [1] Klipper, I. G., Zipf, A., & Lautenbach, S. 2021. Flood Impact Assessment on Road Network and Healthcare Access at the example of Jakarta, Indonesia. *AGILE: GIScience Series*, 2, 1–11. <https://doi.org/10.5194/agile-giss-2-4-2021>.
- [2] Hadisusanto, N., 2011. *Hydrology Applications*. Jogja Mediautama, Malang, ISBN 978 – 602 - 9136 – 03 – 6.
- [3] Cabrera, J. S., & Lee, H. S. 2020. Flood risk assessment for Davao Oriental in the Philippines using geographic information system-based multi-criteria analysis and the maximum entropy model. *Journal of Flood Risk Management*, 13(2). <https://doi.org/10.1111/jfr3.12607>.
- [4] Kodatie, R.J. and Sugiyanto. 2002. *Floods, Several Causes and Control in Environmental Perspective*, Student Library, Yogyakarta.
- [5] Islam, R., Kamaruddin, R., Ahmad, S. A., Jan, S. J., and Anuar, A. R. 2016. A Review on Mechanism of Flood Disaster Management in Asia. *International Review of Management and Marketing*, 6(1). <https://www.proquest.com/scholarly-journals/review-on-mechanism-flood-disaster-management/docview/1762628141/se-2>
- [6] Munich Re. 2020. Flood risk: Underestimated Natural Hazards. <https://www.munichre.com/en/risks/natural-disasters/floods.html>.
- [7] Goel, N.K., Than, Htay Htay., Arya, D.S. 2005. Flood Hazard Mapping In The Lower Part Of Chindwin River Basin, Myanmar. International conference on innovation advances and implementation of flood forecasting technology. Tromsø, Norway.
- [8] Kusumo, P., and Nursari, E. 2016. Zoning level Rakuasa et al. / *Journal of Geoscience and Remote Sensing (JGRS)* 3 (2): 60-69.
- [9] Ullah, Kashif, and Jiquan Zhang. 2020. GIS-Based Flood Hazard Mapping Using Relative Frequency Ratio Method: A Case Study of Panjkora River Basin, Eastern Hindu Kush, Pakistan. *PLoS One* 15(3): 1–18. <http://dx.doi.org/10.1371/journal.pone.0229153>.