

Original Research Article

Response of tomato quality and yield to elevated temperatures under controlled environment

Comment [M1]: This manuscript needs to be re-edited by a native English editor. The sentences are long and incomprehensible. Scientific materials should be written in a simple and clear way.

ABSTRACT:

The present experiments were carried out during 2020-2021 at the Department of Plant Physiology, College of Agriculture, Vellayani, Kerala Agricultural University. The experiment was carried out with the aim of characterization of contrasting tomato genotypes for high temperature tolerance under high temperature condition and control condition to identify key quality and yield traits controlling high temperature tolerance in tomato. The experiment was designed in completely randomized design (CRD) with 2 treatment levels- control and high temperature conditions (36±2°C) wherein 3 tolerant and 3 susceptible genotypes selected from the varietal summer screening experiment, the best performing genotypes in terms of pollen viability, leaf membrane thermo-stability, chlorophyll fluorescence, number of fruits, fruit set %. From this study it can be understood that many of the quality parameters like lycopene content, total sugars, flavanol content was found decreasing in both tolerant and susceptible genotypes but the extent of this reduction was considerable in tolerant ones. In case of ascorbic acid content and firmness of fruit at the time of ripening was increased under HS conditions. Yield related qualities like number of fruits, yield per plant, and root-shoot ratio was found decreasing whereas root dry weight, total dry weight and intensity of fruit drop and flower drop was increased under HS. Therefore, this study focused on tomato genotypes reported to be resilient to high-temperature stress, and comparing them to susceptible cultivars under stress and control settings for analyzing the variance in fruit nutrients and on antioxidant contents in tropical hot climate regions of India. The study performed here highlight the possibility to identify new landraces that can combine good yield performances and fruit nutritional quality at high temperatures, information that is useful for future breeding programs.

Comment [M2]: This abstract is not written in a scientific way. The arrangement of the contents in the abstract is not in order and the reader will be confused. In the abstract, the following contents should be included in one paragraph:
1- Necessity of doing the work 2- Summary of the method 3- Outstanding results 4- General conclusion

Keywords: Tomato, [Heat stress](#), Quality, ~~Heat stress~~, Yield, Antioxidant

1. INTRODUCTION:

It is anticipated that one of the industries negatively impacted by climate change will be agriculture, and that effect will become more noticeable in the coming years [1]. One of the effects of global climate change that may have a significant impact on the quantity and quality of horticulture crops is rising air temperatures [2]. ~~Tomato is one of the products that has a large consumption and cultivation area in the world. One of the most widely cultivated and consumed horticulture crops is the tomato.~~ Its fresh market and processed use are among the elements driving rising consumption. Moreover, tomato ~~fruit~~ has a wealth of vital elements, including minerals like calcium, phosphorus, iron, phenols, flavones, carotenoids, vitamin C, vitamin A, and strong antioxidants [3, 4].

Comment [M3]: This cannot be the reason for the increased consumption of tomatoes. I think the authors have not quoted this sentence well. Please express it in a more appropriate way.

~~Furthermore, lycopene~~ [Lycopene](#)—the compound that gives tomatoes their red color—protects human health in a number of ways. Elevated temperatures pose a substantial environmental strain on plant development and agricultural output. ~~In addition,~~ one of the main species that is particularly vulnerable to high temperatures is the tomato. Temperatures of 35°C and above immediately disrupt vegetative and generative development [5]. The ideal range for the development of flower organs, pollen, and fruit sets is between 15 and 32°C [6, 7]. ~~Similarly, fluctuations~~ [Fluctuations](#) in temperature disrupt the morphology, anatomy, phenology, and biochemistry of plants, ~~at every level of organization~~ [8]. In particular, high temperatures stress tomatoes, causing blossom abortion and limiting fruit set that results in significant yield losses [9]. Increased temperature can also

affect the sensory and nutritional qualities of tomatoes, as well as their physical characteristics (size, color, etc.) [10].

Comment [M4]: What does this word mean???????????

Plant morphology, anatomy, phenology, and biochemistry are all disrupted by temperature variations at all organizational levels. Elevated temperatures directly result in protein denaturation, which in turn causes membrane lipids to become more fluid, enzymes in mitochondria and chloroplasts to become inactive, and membrane integrity to be disrupted in plants [11]. Furthermore, plants under high temperature stress produce reactive oxygen species (ROS) like hydrogen peroxide, singlet oxygen, superoxide, and hydroxyl radicals; the accumulation of ROS is the main cause of crop loss [8, 12, 13]. It was discovered that when tomatoes experienced stress, their stomata closed, increasing the leaf's temperature and reducing photosynthesis [14]. In a similar vein, it was shown that stomata reopened as the temperature of the leaves decreased, and plants proceeded to grow by carrying out photosynthesis as usual in these circumstances [15, 16]. Furthermore, high temperatures in the greenhouse decreased photosynthesis and tomato yield, according to Zhang et al. [17]. Furthermore, Zhang et al. [18] reported that in plants exposed to 35°C, stomatal conductivity, intercellular CO₂ concentration, and transpiration rate rose, but net photosynthesis rates decreased in comparison to the control group [19]. Furthermore, since a larger total number of leaves and, thus, a greater surface area would result in a more substantial amount of water lost by transpiration, declines in the number of leaves are likely to be noticed due to delayed plant growth in high-temperature stress circumstances [20]. Finally, it was underlined that when plants are stressed by high temperatures, they attempt to minimize transpiration by contracting the area of their leaves, which closes their stomata as much as possible [15]. Raising the temperature from 27°C to 32°C results in lower ascorbate and lycopene concentrations, but higher glucoside and regular caffeic acid derivative contents [18]. During fruit development, temperature affects assimilation, transport, and storage. During the phases of fruit ripening, structural and functional molecules including starch and secondary metabolites that affect the interior quality are created [20]. The assimilation of photosynthetic processes in the leaves results in the dry matter of the fruit, which is subsequently transferred to the fruit as sucrose. The flavor of tomatoes is determined by the transformation of sucrose and other sugars into organic acids and fragrance compounds [21]. Fruit quality is also influenced by environmental factors like as temperature, water irradiation, and photosynthesis [22]. While numerous studies have been conducted on the physiology, plant growth, and yield of tomatoes grown in high temperatures but few studies have been done on how high temperatures alter the fruit's antioxidant and nutrient content.

Comment [M5]: Repeated words are used a lot. In scientific texts, this is a disadvantage.

Formatted: Highlight

Formatted: Highlight

Formatted: Highlight

Comment [M6]: The need to do research is not stated well? In this section, the necessity of doing research should be well explained.

Formatted: Highlight

Formatted: Highlight

2. MATERIAL AND METHODS:

From the varietal summer screening experiment, the best performing genotypes in terms of pollen viability, leaf membrane thermo-stability, chlorophyll fluorescence, number of fruits, fruit set % (table 1) were selected to determine the critical physiological and biochemical characteristics regulating high-temperature tolerance in different tomato genotypes for high-temperature tolerance under high-temperature circumstances.

Comment [M7]: This paragraph does not have a proper grammatical structure. Please write in short, simple and scientific sentences.

The experiment was set up using a completely randomized design (CRD), with three replications of each of the two treatment levels-control and high-temperature stress with a temperature range of 36 +/- 2°C. With proper labelling, seeds were planted in pots filled with potting soil (a 2:1 blend of vermicompost and coir pith compost). Regular irrigation was offered. After thirty days of germination, seedlings were transplanted into pots filled with potting mixture comprised of equal parts soil, sand, and cow dung. Throughout the experiment, a digital thermo-hygrometer was used to record the daily temperatures, including the highest and lowest temperatures as well as the relative humidity levels under both control and heat stress circumstances (figure 1) represent weather data for kharif season both under control and heat stress conditions respectively. From transplanting till harvesting, one treatment group was kept in ambient conditions, and the other group, which was subjected to severe temperature stress, was kept in a polyhouse facility. The crop was grown in accordance with Package of Practices (POP) recommendations. The observations were made at the appropriate stage.

Invertase enzyme activity: Five ripened fruits were picked randomly from each treatment to determine the following quality parameters. Invertase enzyme activity was determined as described

by [23, 24]. In a reaction mixture comprising 1.5 ml of the enzyme extract and 0.2 ml of 20 mM sucrose mixed in 100 mM acetate buffer (pH 4.7), the activity of soluble acid invertase was examined. At 30°C, the mixture was incubated for 30 minutes. Test tubes were submerged in a bath of hot water for three minutes in order to stop the reaction. The boiling-inactivated enzyme preparation was present in the control sample. The amount of free fructose in the mixture was used to calculate the amount of hydrolyzed sucrose.

Total flavanol content (mg g⁻¹ FW): According to Fukumoto and Mazza [25], the total flavonoids were calculated and the absorbance at 510 nm was measured by means of a spectrophotometer and quercetin as standard. The method consisted of mixing 0.25 mL of sample with 0.25 mL of 0.1% HCl in 95% ethanol and 4.55 mL of 2% HCl. The absorbance of the solution was then read at 360 nm to measure flavonols. Standard used was quercetin for flavonols. Standards were prepared in 100% methanol.

Total sugar content (mg g⁻¹ FW): The Anthrone technique was used to determine the total soluble sugar concentration [26]. In a mortar, 0.5 g of the fresh leaf was crushed, and 5 ml of 80% hot alcohol was added. The mixture was centrifuged for 15 minutes at 6000 rpm at 9000 g. After the resulting supernatant was separated, 12.5 ml of 80% alcohol was added to another test tube. After taking 1 milliliter of the solution, 1 milliliter of 0.2% anthrone was added. For ten minutes, the mixture was heated to 100°C in a waterbath. The mixture was allowed to sit on ice for five minutes in order to stop the reaction. The amount of total soluble sugar was calculated at 620 nm using a spectrophotometer. Calculation of the total soluble sugar content was done by creating a standard curve using a standard glucose and was expressed in mg/g [freshweight/fresh weight](#).

Ascorbic acid content (mg g⁻¹ FW): By using the 2,6-dichlorophenol indophenol (DCPIP) AOAC technique (967.21), the ascorbic acid concentration was determined [27]. After thoroughly mixing ten grams of tomato puree with a 4% oxalic acid solution and pressing the mixture through a muslin cloth, the volume was increased to fifty milliliters. Titrating a known amount of the extract against DCPIP allowed for the estimation of the ascorbic acid level. Using a standard curve of L-ascorbic acid, ascorbic acid concentration was determined as mg of ascorbic acid equivalents per 100 g of fruit fresh mass (FFM).

Yield related observations: At regular intervals beginning with the initiation of flowering, the number of fruits per plant was counted on five plants in each treatment. Combining the quantity of fruits and fruit mass that were regularly picked allowed researchers to calculate the yield per plant (g) and number of fruits per plant in the same plants. Data on the fruit drop were recorded under each treatment from the date of fruit setting till the time of fruit harvesting. The percentage of fruit drop under each treatment was calculated by dividing the number of fruits dropped to total number of fruits obtained from each replication within a treatment.

For biomass measurements, leaves and stems were processed separately. After that, plant tissues were dried in an oven for 1 week at 65°C and weighed to quantify the root dry weight (DW). Weight was taken for the root portion and shoot portion separately and then we obtain the total dry weight by adding up both the weights and is given in g. For analyzing the root-shoot ratio (R:S ratio), the root dry weight is divided by the shoot dry weight.

Statistical analysis: An ANOVA was performed on the collected data to ascertain the statistical significance among the different genotypes. The results were assessed using the two-factor analysis and replications using the GRAPES software. We computed the means and standard errors. The data were subjected to a one-way analysis of variance (ANOVA) at a significance threshold of $p \leq 0.05$ using GRAPES software. Duncan's multiple range test was used to compare the mean values when the ANOVA findings were significant.

3. RESULTS:

When compared to the control plants, every genotype in the research had higher ascorbic acid concentration in the plants. Under control conditions, Vellayani Vijay had the highest anthocyanin content (27.57 mg g⁻¹ fresh weight), but under high temperature conditions, Kashi Vishesh had the highest ascorbic acid content (32.48 mg g⁻¹ fresh weight). Under both situations, Arka Vikas exhibited the lowest rates of ascorbic acid production, with fresh weight values of 10.06 mg g⁻¹ and 10.43 mg g⁻¹ for control and high stress conditions, respectively. The ascorbic acid content produced by Vellayani Vijay and Kashi Vishesh genotypes under both growing conditions was comparable (table 2).

~~Under both control and HS conditions,~~ Vellayani Vijay showed the highest value of invertase activity in both control and HS conditions, measuring 0.80 mg of glucose released h⁻¹mg⁻¹protein and 0.73 mg of glucose released h⁻¹mg⁻¹protein, respectively, while Arka Vikas showed the lowest value, measuring 0.44 mg of glucose released h⁻¹mg⁻¹protein and 0.32 mg of glucose released h⁻¹mg⁻¹protein, under both conditions. The percentage decrease in SPS was approximately 3-7% for genotypes that were tolerant and 11–13% for those that were susceptible. The mean value was 0.63 mg of glucose released h⁻¹mg⁻¹protein under control conditions and 0.54 mg under high-stress conditions (table 4).

Vellayani Vijay had the highest flavanol content ~~under in~~ both control and HS conditions, measuring 10.94 mg g⁻¹ fresh weight and 12.37 mg g⁻¹ fresh weight, respectively, while Arka Vikas had the lowest flavanol content ~~under in~~ both conditions, measuring 5.12 mg g⁻¹ fresh weight and 6.94 mg g⁻¹ fresh weight, respectively. The flavanol content was increased Under stressful situations.~~Under stressful situations, it was discovered that the flavanol content increased.~~ This rise was lowest for Vellayani Vijay (1.03%) and largest for Arka Vikas (3.54%), who had the susceptible and tolerant genotypes, respectively (figure 2). In tolerant genotypes, the percentage increase in flavanol content was approximately 1-2%, while in sensitive genotypes, it was approximately 2-4% (Figure 2).

It was discovered that when genotypes are produced under heat stress, the total sugar content drastically decreases (Figure 2). The research genotypes differed in the rate at which the total sugar concentration decreased. Kashi Vishesh had the lowest percentage rate of reduction (23.4%), while Arka Vikas had the highest (29.25%). Vellayani Vijay and Arka Vikas had the greatest and lowest rates of total sugar content for both situations; under control, the values were 3.01 mg g⁻¹ FW and 1.89 mg g⁻¹ FW, while under stress, the values were 2.19 mg g⁻¹ FW and 1.34 mg g⁻¹ FW. In genotypes that are tolerant to heat stress, total sugars were observed to decrease by 23–30%, while in susceptible genotypes, the rate of reduction was 29–37%.

Lycopene content was found decreasing in both tolerant and susceptible genotypes when plants were grown under high temperature conditions when compared to control (table 4). Under control as well as HS conditions the highest value of lycopene content was recorded in Vellayani Vijay with values of 13.88 mg g⁻¹ FW and 12.73 mg g⁻¹ FW respectively, whereas, it was lowest in case of Arka Vikas under control and HS condition with value of 5.51 mg g⁻¹ FW and 4.32 mg g⁻¹ FW respectively.

The intensity of fruit drop was highest for Arka Vikas (57.87%) and lowest for Anagha (14.53%) in control treatment as well as in HS. ~~Under control conditions, the intensity of fruit drop was highest for Arka Vikas (57.87%) and lowest for Anagha (14.53%); under HS,~~ it was maximum for Arka Vikas (41.34%) and minimum for Kashi Vishesh (6.32%). Only resistant variety fruited at significant quantities, while sensitive kinds produced minute, deformed fruits with lowest fruit drop and maximal blossom drop. Treatments revealed considerable variance for fruit drop severity, however genotype and temperature regime interactions and variety exhibited non-significant variation (table 5).

In comparison to the control temperature, all genotypes showed a considerable drop in the number of fruits per plant at high temperatures. Vellayani Vijay (64.67) produced the most fruits, whereas Arka Vikas (11.33) produced the fewest under control circumstances. But Kashi Vishesh (50.67) produces the most fruits under heat stress, whereas Arka Vikas (4.33) produces the fewest. The tolerant genotypes showed the least percent drop in fruit yield per plant, ranging from 30 to 40%, while the susceptible genotypes showed the most percent decrease, ranging from 80 to 98% (table 6).

~~In comparison to the control temperature, all~~ All tomato genotypes showed a significant loss in yield per plant at high temperatures ~~in comparison to the control temperature~~. In comparison to heat-susceptible genotypes, which showed yield reductions of 80–90%, relatively tolerant genotypes showed yield reductions of 25–40% under heat stress conditions (Table 9). Arka Vikas produced the lowest yield per plant under both temperature conditions, 418.13g under control and 48.25g under stress, whereas Vellayani Vijay produced the most yield per plant under both HS and control conditions, 2952.06g and 2068.44g, respectively. Only genotypes that are both moderately tolerant and tolerant of heat stress yielded larger fruit yields per plant (table 7).

Comment [M8]: These sentences are grammatically incorrect.

Genotypes like Kashi Vishesh, Anagha, PKM-1 and Arka Vikas were on par under control conditions whereas Kashi Vishesh and Pusa Rohini under study were significantly on par under HS conditions. Mean value of root dry mass was 0.76g and 1.87g for control and HS conditions respectively. Highest values of R:S ratio for control and HS conditions was observed in Pusa Rohini (1.40g) and Anagha (2.60g) respectively whereas lowest values were observed in Velayani Vijay under both conditions which was 0.31g and 1.29g respectively (table 8).

Plant height and weight per stem showed a significant increase under high CO₂ conditions (570 μ mol mol⁻¹). It has been shown that plants cultivated in polyhouses with high temperatures develop tall root systems that enable them to adapt and survive under stressful circumstances. Table 9 shows that the average root-shoot ratio under stress circumstances was 0.69, and under control it was 0.41. Grown under both settings, genotypes Kashi Vishesh and Vellayani Vijay were shown to perform similarly in terms of R:S ratio, whereas PKM-1 and Pusa Rohini were equally comparable under control conditions. Arka Vikas (0.61) and Pusa Rohini (0.89) showed the maximum R:S ratio under control and HS, while Vellayani Vijay (0.32) and Kashi Vishesh (0.89) showed the lowest.

4. **DISCUSSION:**

One of the biggest obstacles to crop production is heat stress (HS), which negatively impacts the tomato plant's vegetative and reproductive processes and eventually lowers fruit quality and yield [29]. Furthermore, some justifications have been put forth regarding why tomatoes don't reproduce well in hot climates. These consist of low or aberrant amounts of carbs, low levels of pollen, aberrant development of the female reproductive tissues, hormonal abnormalities, and lack of pollination [30, 31]. According to Guichard et al. [32], high temperatures in tomato plants have an impact on a number of physiological and biochemical processes that ultimately lead to a decrease in production. The following biological and/or physiological processes may be impacted by temperature: stomatal conductance to CO₂ diffusion and photoassimilate translocation; photosynthetic enzyme activity; membrane integrity; photophosphorylation; and electron transport in chloroplasts [33, 34, 35].

High temperatures also negatively impact tomato plants during their vegetative and reproductive stages, which lowers fruit quality and yield [36]. Due to a disrupted root-nutrient interaction, high temperatures exacerbate root heat stress (HS) and have an adverse effect on nutritional quality [37, 38]. Thus, by restricting the availability of water, nutrients, and hormones that affect the sink-source relationships between roots and shoots, high temperatures inhibit root growth, diminish the shoot system, and ultimately lower fruit output [39, 40].

Pigments called chlorophylls are necessary for photosynthesis. There may be instances where a lower chlorophyll content has no effect on photosynthesis, but generally speaking, the higher the chlorophyll content, the faster the rate of photosynthesis [41, 42].

During fruit development, temperature affects assimilation, transport, and storage. Lower night temperature interferes in starch accumulation before anthesis by decreasing the concentration of soluble sugar in mature pollen grains [43]. Whereas, when plants grown at high day temperature along with low night temperature, there will be 50% reduction in enzyme activities of pollen cell wall and soluble acid invertase that catalyze the hydrolysis of sucrose [44, 45].

According to reports, raising the temperature in tomato cultivation from 21°C to 26°C lowers the total carotene content but has no effect on the lycopene content; conversely, raising the temperature from 27°C to 32°C lowers the ascorbate and lycopene content while increasing the glucoside and routine caffeic acid derivatives contents [46, 47]. Furthermore, in high temperatures, F1 hybrids containing

Comment [M9]: Unfortunately, only different sources have been reviewed in the discussion section. The authors have not written any discussion about the results of their work in this section. In the discussion section, the research results should be expanded and also compared with the results of other people's work. Finally, the main points of this research should be stated. The discussion section should be rewritten based on the points mentioned.

mutants that give tomatoes their firmness and can comparatively preserve qualities like color, texture, flavor, and nutritional value [48].

According to Klunklin and Savage [49], high-temperature tolerant local tomato lines that were chosen in a stress affected area had higher levels of lycopene than popular commercial hybrid types. Another study [50] found that tomatoes with higher carotenoid and lycopene content received in the high-temperature application than compared to control. Furthermore, under both control and stress circumstances, sensitive genotypes accumulate less carotenoid and lycopene content than tolerant genotypes [51, 52]. Similarly, lycopene concentration and total carotenoids are highly influenced by temperature [53]. Compared to the fruit's physical growth stage, the temperature during the ripening period affects the biosynthesis of lycopene. High temperatures have been shown to cause lycopene degradation, decrease and block biosynthesis [54, 55, 56]. According to Shi and Maguer [57], lycopene production was suppressed by relatively high temperatures (38°C), whereas low temperatures inhibited the ripening of fruit as well as the formation of lycopene. In this investigation, general drops in tomato lycopene levels were discovered when the temperature was high.

The presence of flavonoids and phenolics in tomato fruits can help preserve vitamin C levels because phenolic substances are known to have a protective effect on ascorbic acid content [58, 59]. According to Akhoundnejad [60], tomato genotypes' vitamin C content changed in response to high temperatures. Some genotypes showed an increase in vitamin C content, while other genotypes showed a drop. According to Hernández et al. [61], applying temperature stress during the flowering and fruit set stages increased the vitamin C content. They also suggested that there might be a connection between the adaptation of plant metabolism to high temperatures and the increase in vitamin C. Another investigation on tomato genotypes under high temperature stress found that all tolerant genotypes had increased vitamin C content, whereas susceptible genotypes did not significantly differ in vitamin C content under stress conditions from the control [62].

Stress from high temperatures causes harm to plants due to ROS (Reactive Oxygen Species). Plant tissues have antioxidant enzymes that scavenge reactive oxygen species (ROS), such as catalase, glutathione reductase, superoxide dismutase, and ascorbate peroxidase, as well as nonenzymatic antioxidants such as tocopherols, phenolic compounds, and glutathione [63]. Reactive oxygen species (ROS) detoxification biochemical pathways must be altered in order to achieve thermotolerance, which is why heat stress causes the accumulation of antioxidant molecules such as carotenoids, ascorbic acid (AsA), and polyphenols [64, 65]. Additionally, carotenoids can help membranes respond to changes in temperature by enhancing their fluidity and permeability [66, 67]. In fact, these compounds have the ability to preserve photosynthetic membranes and are crucial for photoprotection, light harvesting, and structural stability.

Phenolics are important secondary metabolites that protect the body from DNA damage, lipid peroxidation, and reactive oxygen species (ROS) [68]. This study demonstrated that tomato fruit exposed to high temperatures had higher levels of phenolics and displayed antioxidant qualities. In addition to serving as a stress-reduction mechanism for tomato plants, this is a valuable source of antioxidants for humans who eat the fruits of tomato genotypes that can withstand high temperatures [69].

5. CONCLUSION:

From this study it can be understood that many of the quality parameters like lycopene content, total sugars, flavanol content was found decreasing in both tolerant and susceptible genotypes but the extent of this reduction was considerable in tolerant ones. In case of ascorbic acid content and firmness of fruit at the time of ripening was increased under HS conditions. Yield related qualities like number of fruits, yield per plant, and root-shoot ratio was found decreasing whereas root dry weight, total dry weight and intensity of fruit drop and flower drop was increased under HS. Increasing the antioxidant content of agricultural crops is gaining popularity as a way to enhance food quality and create crops that can withstand high levels of stress. Given how frequently people consume tomatoes on a daily basis, whether they are processed or fresh, they can be considered one of the main known sources of antioxidants in the human diet. In tolerant genotypes, high temperatures may boost a plant or fruit's antioxidant capacity to scavenge ROS (reactive oxygen species).

Within this framework, investigating natural variation and identifying genotypes and landraces with high temperature yield performance may aid in comprehending the mechanisms behind high temperature tolerance and offer valuable agronomic traits and genetic diversity for breeding purposes. Consequently, creating new cultivars that can withstand high temperatures is a crucial financial strategy for preparing for impending climate change. Similar to this, there is significant interest in raising the antioxidant content of crops in order to enhance food quality and create high-stress-tolerant varieties.

REFERENCES:

- [1] Keeney D. High Level Conferences on World Food Security: 9e Challenges of Climate Change and Bioenergy, FAO, Rome, Italy, 2008, <http://www.fao.org/foodclimate/hlc-home/en/>.
- [2] Acar A. Prepare for climate change. *National Geographic*. 2010; 84–87.
- [3] Garcia-Closas R, Berenguer A, Tormo MJ. Dietary sources of vitamin C, vitamin E and specific carotenoids in Spain. *Brit. J. Nutr.* 2004; 91(6): 1005– 1011.
- [4] Tomas M, Beekwilder J, Hall RD, Sagdic O, Boyacioglu D, Capanoglu E. Industrial processing versus home processing of tomato sauce: effects on phenolics, flavonoids and in vitro bioaccessibility of antioxidants. *Food Chem.* 2017; 220; 51–58.
- [5] Dere S. Increasing the nutritional properties and quality of tomatoes with drought resistance, Ph.D. thesis, Cukurova University, Graduate School of Natural and Applied Sciences, Adana, Turkey, 2019.
- [6] Akhoundnejad Y, Dasgan HY. Physiological performance of some high temperature tolerant tomato genotypes. *Int. J. Sci. Technol. Res.* 2018; 4(7): 57–74.
- [7] Amrutha V, Beena R. Impact of temperature difference on the physicochemical properties and yield of tomato: a review. *Chem. Sci. Rev. Lett.* 2020; 9:665-681.
- [8] Vijayakumar A, Shanija S, Beena R, Sarada S, Sajitha RT, Roy S, Manju RV, Viji MM. High temperature induced changes in quality and yield parameters of tomato and similarity coefficients among genotypes using SSR markers (*Solanum lycopersicum* L.). *Heliyon*. 2021; 7: e05988.
- [9] Shanija S, Amrutha V, Beena R, Soni KB, Swapna A, Viji MM. Genetic diversity analysis using SSR markers for high temperature tolerance in tomato (*Solanum lycopersicum* L.). *Veg. Sci.* 2020; 47:176- 182.
- [10] Akhoundnejad Y, Dasgan HY. Photosynthesis, transpiration, stomatal conductance of some melon (*Cucumis melo* L.) genotypes under different drought stress. *Fresenius Environ. Bullet.* 2020; 12: 10974–10979.
- [11] Amrutha V, Shanija S, Beena R, Nithya N, Jaslam MPK, Soni KB, Viji MM. Population structure analysis and marker trait association in selected set of Indian tomato (*Solanum lycopersicum* L.) varieties under high temperature condition. *Genet. Resourc. Crop Evol.* 2021; 1-25.
- [12] Dasgan HY, Akhoundnejad Y. Determination of tolerance levels to high temperature stress of different local tomato genotypes, examination of their morphological, physiological and agricultural characteristics. Republic of Turkey Ministry of Agriculture and Forestry, Ankara, Turkey, 2013.
- [13] Gill SS, Tuteja N. Reactive oxygen species and antioxidant machinery in abiotic stress tolerance in crop plants. *Plant Physiol. Biochem.* 2010; 48(12): 909– 930.
- [14] Suzuki N, Koussevitzky S, Mittler R, Miller G. ROS and redox signalling in the response of plants to abiotic stress. *Plant Cell Environ.* 2012; 35(2): 259–270.
- [16] Waraich EA, Ahmad R, Halim A, Aziz T. Alleviation of temperature stress by nutrient management in crop plants: a review. *J. Soil Sci. Plant Nutrit.* 2012; 12(2); 221–244.

- [17] Zhang J, Li TL, Xu J. Effects of sub-high temperature in daytime from different stages on tomato photosynthesis and yield in greenhouse. *Transactions Chinese Soc. Agric. Eng.* 2008; 24(3): 193–197.
- [18] Zhang J, Xiaodong J, Tianlai L, Zaiqiang Y. Effect of moderately-high temperature stress on photosynthesis and carbohydrate in tomato (*Lycopersicon esculentum* L.) leaves. *Afric. J. Agric. Res.* 2012; 7(3): 487–492.
- [19] Vermeulen K, Steppe K, Liunh NS. Simultaneous response of stem diameter, sap flow rate and leaf temperature of tomato plants to drought stress. *Acta Horticulturae.* 2007; 801: 1259–1266.
- [20] Çomlekçioglu N, Soylu MK. Determination of high temperature tolerance via screening of flower and fruit formation in tomato. *Yuzuncu Yil Univ. J. Agric. Sci.* 2019; 20(2): 123–130.
- [21] Gautier H, Diakou-Verdin V, Benard C. How does tomato quality (sugar, acid, and nutritional quality) vary with ripening stage, temperature, and irradiance?. *J. Agric. Food Chem.* 2008; 56(4): 1241–1250.
- [22] Garg N, Cheema DS. Assessment of fruit quality attributes of tomato hybrids involving ripening mutants under high temperature conditions. *Scientia Horticulturae.* 2011; 131: 29–38.
- [23] Tupý J. Stimulatory effects of 2, 4-dichlorophenoxyacetic acid and of 1-naphthylacetic acid on sucrose level, invertase activity and sucrose utilization in the latex of *Hevea brasiliensis*. *Planta.* 1969; 88: 144–153.
- [24] Miron, D, Schaffer AA. (1991). Sucrose phosphate synthase, sucrose synthase, and invertase activities in developing fruit of *Lycopersicon esculentum* mill. and the sucrose accumulating in *Lycopersicon hirsutum* humb. *Plant Physiol.* 1991; 95: 623–627.
- [25] Fukumoto LR, Mazza G. Assessing antioxidant and prooxidant activities of phenolic compounds. *J. Agric. Food Chem.* 2000; 48(8): 3597–3604.
- [26] Irigoyen JJ, Einerich DW, Sánchez-Díaz M. Water stress induced changes in concentrations of proline and total soluble sugars in nodulated alfalfa (*Medicago sativa*) plants. *Physiol. Plant.* 1992; 84: 55–60.
- [27] AOAC. International Official methods of analysis, 20th edn. (On-line). AOAC International, Rockville, MD, 2016.
- [28] Shoaf TW, Lium BW. 1976. Improved extraction of chlorophyll a and b from algae using dimethylsulphoxide. *Limnol. Oceanogr.* 1976; 21: 926–928.
- [29] Zhou R, Yu X, Kjær KH, Rosenqvist E, Ottosen CO, Wu Z. Screening and validation of tomato genotypes under heat stress using Fv/Fm to reveal the physiological mechanism of heat tolerance. *Environ. Exp. Bot.* 2015; 118: 1–11.
- [30] Singh U, Patel PK, Singh AK. Screening of tomato genotypes under high temperature stress for reproductive traits. *Veg. Sci.* 2015; 42(2): 52–55.
- [31] Alsamir M, Ahmad NM, Mahmood T, Trethowan R, Morpho-physiological traits linked to high temperature stress tolerance in tomato (*S. lycopersicum* L.). *Am. J. Plant Sci.* 2017; 8(11): 2681–2694.
- [32] Guichard S, Bertin N, Leonardi C, Gary C. Tomato fruit quality in relation to water and carbon fluxes. *Agron.* 2001; 21(4): 385–392.
- [33] Poudyal D, Rosenqvist E, Ottosen CO. Phenotyping from lab to field—tomato lines screened for heat stress using Fv/Fm maintain high fruit yield during thermal stress in the field. *Funct. Plant Biol.* 2018; 46(1): 44–55.
- [34] Zhang H, Pan C, Gu S. Stomatal movements are involved in elevated CO₂-mitigated high temperature stress in tomato. *Physiologia Plantarum.* 2019; 165(3): 569–583.

- [35] Akhoundnejad Y, Dasgan YH, Karabiyik S. Pollen quality, pollen production and yield of some tomato (*Solanum lycopersicum*) genotypes under high temperature stress in eastern Mediterranean. *Notulae Botanicae Horti Agrobotanica Cluj-Napoca*. 2020; 48(2): 893–905.
- [36] Rajametov SN, Yang EY, Jeong HB, Cho MC, Chae SY, Paudel N. Heat treatment in two tomato cultivars: a study of the effect on physiological and growth recovery. *Horticulturae*. 2021; 7(5): 119.
- [37] Giri A, Heckathorn S, Mishra S, Krause C. Heat stress decreases levels of nutrient-uptake and assimilation proteins in tomato roots. *Plants*. 2017; 6(1): 6.
- [38] Amrutha V, Beena R, Shanija S. Physiological and biochemical traits contributing for high temperature tolerance in tomato (*Solanum lycopersicum* L.). *Agric. Res. J.* 2023; 60(4): 516-526.
- [39] Shanija S, Amrutha V, Beena R, Soni KB, Swapna A, Viji MM. Genetic diversity analysis using SSR markers for high temperature tolerance in tomato (*Solanum lycopersicum* L.). *Veg. Sci.* 2020; 47(2): 176-182.
- [40] Beena R, Veena V, Jaslam MPK, Nithya N, Adarsh VS. Germplasm innovation for high-temperature tolerance from traditional rice accessions of Kerala using genetic variability, genetic advance, path coefficient analysis and principal component analysis. *J. Crop Sci. Biotechnol.* 2021; 24(5): 555-566.
- [41] Radha B, Sunitha NC, Sah RP, Azarudeen TPM, Krishna GK, Umesh DK, Thomas S, Anilkumar C, Upadhyay S, Kumar A, Manikanta ChLN, Behera S, Marndi BC, Siddique KHM. Physiological and molecular implications of multiple abiotic stresses on yield and quality of rice. *Frontiers Plant Sci.* 2023; 13:996514.
- [42] Khanal B, Suthaparan A, Hückstadt AB, Wold AB, Mortensen L, Gislørød HR. The effect of high day and low night temperature on pollen production, pollen germination and postharvest quality of tomatoes. *Am. J. Plant Sci.* 2013; 4(7): 19–25.
- [43] Zhou R, Yu X, Ottosen CO. Drought stress had a predominant effect over heat stress on three tomato cultivars subjected to combined stress. *BMC Plant Biol.* 2017; 17(1): 24.
- [44] Stephen K, Beena R, Kiran AG, Shanija S, Saravanan R. Changes in physiological traits and expression of key genes involved in sugar signaling pathway in rice under high temperature stress. *3 Biotech.* 2022; 12(2):183.
- [45] Vijayakumar A, Beena R. Alterations in carbohydrate metabolism and modulation of thermo-tolerance in tomato under heat stress. *Int. J. Environ. Climate Change.* 2023; 13 (9): 2798-2818.
- [46] Sadler G, Davis J, Dezman D. Rapid extraction of lycopene and β -carotene from reconstituted tomato paste and pink grapefruit homogenates. *J. Food Sci.* 1990; 55(5): 1460-1461.
- [47] Ozkan M. Thermal stability of lycopene in grapefruit juice and tomato pulp at high temperatures. Ankara University, Ankara, Turkey, 2006.
- [48] Khanal B. Effect of day and night temperature on pollen characteristics, fruit quality and storability of tomato. Master's thesis, Department of Plant and Environmental Sciences, Norwegian University of Life Sciences, As, Norway, 2012.
- [49] Klunklin W, Savage G. Effect on quality characteristics of tomatoes grown under well-watered and drought stress conditions. *Foods*. 2017; 6(8): 56–65.
- [50] Sharma SK, Le Maguer M. Lycopene in tomatoes and tomato pulp fractions. *Ital. J. Food Sci.* 1996; 8(2): 107–113.
- [51] Shivashankara KS, Pavithra KC, Laxman RH, Sadashiva AT, Roy TK, Christopher MG. Genotypic variability in tomato for total carotenoids and lycopene content during summer and response to post-harvest temperature. *J. Hortic. Sci.* 2014; 9(1): 98–102.

- [52] Karipcin MZ, Dinc S, Kara M, Kahraman S, Alp I, Cicekci H. High temperature-tolerant tomato lines: bioactive compounds. *Journal for Verbraucherschutz und Lebensmittelsicherheit*. 2016; 11(2): 117–125.
- [53] Helyes L, Lugasi A, Pek Z. Effect of natural light on surface temperature and lycopene content of vine ripened tomato fruit. *Can. J. Plant Sci.* 2007; 87(4): 927–929.
- [54] George B, Kaur C, Khurdiya DS, Kapoor HC. Antioxidants in tomato (*Lycopersium esculentum*) as a function of genotype. *Food Chem.* 2004; 84(1): 45–51.
- [55] Fleisher HD, Logendra SL, Moraru C. Effect of temperature perturbations on tomato (*Lycopersicon esculentum* Mill.) quality and production scheduling. *J. Hort. Sci. Biotechnol.* 2006; 81(1): 125–131.
- [56] Demiray E, Tulek Y, Yilmaz Y. Degradation kinetics of lycopene, β -carotene and ascorbic acid in tomatoes during hot air drying. *Food Sci. Technol.* 2013; 50(1): 172–176.
- [57] Shi J, Maguer ML. Lycopene in tomatoes: chemical and physical properties affected by food processing. *Crit. Rev. Food Sci. Nutr.* 2000; 40(1): 1–42.
- [58] Bozan B, Tunalier Z, Kosar M, Altıntas A, Baser KHC. Comparison of ascorbic and citric acid contents in emphasis type. In *Proceedings of the 11th Symposium on Plant Origin*, Ankara, Turkey, 1997.
- [59] Kaur C, Walia S, Nagal S. Functional quality and antioxidant composition of selected tomato (*Solanum lycopersicon* L) cultivars grown in northern India. *Food Sci. Technol.* 2013; 50(1): 139–145.
- [60] Lokesha AN, Shivashankara KS, Laxman RH, Geetha GA, Shankar AG. Effect of high temperature on fruit quality parameters of contrasting tomato genotypes. *Int. J. Curr. Microbiol. Appl. Sci.* 2019; 8(3): 1019–1029.
- [61] Hernandez V, Hellin P, Fenoll J, Molina MV, Garrido I, Flores P. Impact of high temperature stress on ascorbic acid concentration in tomato. *Acta Horticulturae*. 2018; 1194: 985–990.
- [62] Toor RK, Savage GP. Changes in major antioxidant components of tomatoes during post-harvest storage. *Food Chem.* 2006; 99(4): 724–727.
- [63] Akhoundnejad Y. Physiological and agricultural investigation of high temperature resistance in tomato, Ph.D. thesis, Cukurova University, Graduate School of Natural and Applied Sciences, Adana, Turkey, 2016.
- [64] Spicher L, Almeida J, Gutbrod K. Essential role for phyto kinase and tocopherol in tolerance to combined light and temperature stress in tomato. *J. Exp. Bot.* 2017; 68(21-22): 5845–5856.
- [65] Scarano A, Olivieri F, Gerardi C. Selection of tomato landraces with high fruit yield and nutritional quality under elevated temperatures. *J. Sci. Food Agric.* 2020; 100(6): 2791–2799.
- [66] Rivero RM, Ruiz JM, Garcia PC, Lopez-Lefebvre LR, Sanchez E, Romero L. Resistance to cold and heat stress: accumulation of phenolic compounds in tomato and watermelon plants. *Plant Sci.* 2001; 160: 315–321.
- [67] Weidner S, Karolak M, Karamac M, Kosinska A, Amarowicz R. Phenolic compounds and properties of antioxidants in grapevine roots (*Vitis vinifera* L.) under drought stress followed by regeneration. *Acta Societatis Botanicorum Poloniae*. 2009; 78: 97–103.
- [68] Krol A, Amarowicz R, Weidner S. Changes in the composition of phenolic compounds and antioxidant properties of grapevine roots and leaves (*Vitis vinifera* L.) under continuous of long-term drought stress. *Acta Physiologiae Plantarum*. 2014; 36: 1491–1499.
- [69] Iqbal Q, Saleem MY, Hameed A, Asghar M. Assessment of genetic divergence in tomato through agglomerative hierarchical clustering and principal component analysis. *Pak. J. Bot.* 2014; 46: 1865–1870.

[70] Sivakumar J, Prashanth JEP, Rajesh N, Reddy SM, Pinjari OB. Principal component analysis approach for comprehensive screening of salt stress-tolerant tomato germplasm at the seedling stage. *J. Biosci.* 2020; 45: 1–11.

Tables:

Table 1: Range, mean, standard deviation of various traits of tomato genotypes under high-temperature condition during summer months of 2022

Comment [M10]: In all the tables, the deviation from the standard or the error of the standard must be given along with the average.

Sl. No	Variables	Maximum	Minimum	Mean	S.E	C.D
1	Photosynthetic rate (PR)	Anagha (22.9µmol CO ₂ m ⁻² s ⁻¹)	EC-313466 (11.28µmol CO ₂ m ⁻² s ⁻¹)	15.56	1.01	2.15
2	Stomatal conductance (SC)	Marutham (68mol H ₂ O m ⁻² s ⁻¹)	Kashi Vishesh (32mol H ₂ O m ⁻² s ⁻¹)	47.45	3.39	7.18
3	Pollen viability (PV)	Anagha (98.20%)	Arka Vikas (53.26%)	73.44	1.23	2.61
4	Chlorophyll fluorescence (CF)	Arka Sourabh (0.78)	Vellayani Vijay (0.48)	0.65	0.05	0.11
5	Chlorophyll content (CHL)	Vellayani Vijay (2.68 mg g ⁻¹ FW)	Pusa Rohini (0.74mg g ⁻¹ FW)	1.24	0.20	0.42
6	Leaf membrane thermostability (LMT)	Anagha (78.48%)	Pusa Rohini (30.48%)	53.38	1.10	2.23
7	Number of fruits	Kashi Vishesh (59)	Arka Sourabh (4)	20.15	7.38	15.64
8	Fruit set %	Vellayani Vijay (91.41%)	PKM-1 (2.33%)	18.94	5.57	11.80
9	Yield per plant	Vellayani Vijay (1146.09 g)	IC-45 (2.3g)	18.42	2.85	6.03

Table 2: Effect of heat stress on ascorbic acid content in different tomato genotypes expressed in mg g-1 FW

Genotypes	Ascorbic acid (mg g-1 FW)

	Control (C)	Stress (H)	MEAN (P)
Kashi Vishesh (T1)	27.53 ^c	32.48 ^a	30.01 ^a
Vellayani Vijay (T2)	27.57 ^c	30.47 ^b	29.02 ^a
Anagha (T3)	21.96 ^e	25.47 ^d	23.72 ^b
Pusa Rohini (T4)	14.87 ^f	15.87 ^f	15.37 ^c
PKM-1 (T5)	12.10 ^g	12.86 ^g	12.48 ^d
Arka Vikas (T6)	10.06 ^h	10.43 ^h	10.24 ^e
Mean (D)	19.02	21.26	
C.D.(p≤0.05)	P=1.143, D=0.66, PxD=1.617		
SE(m)	0.554		
CV	4.763		

Table 3: Effect of heat stress on invertase enzyme activity in different tomato genotypes expressed in mg Glu h⁻¹ mg⁻¹ protein

Genotypes	Invertase activity (mg glucose released h ⁻¹ mg ⁻¹ protein)		
	Control (C)	Stress (H)	MEAN (P)
Kashi Vishesh (T1)	0.77	0.68	0.73 ^a
Vellayani Vijay (T2)	0.80	0.73	0.76 ^a
Anagha (T3)	0.69	0.61	0.65 ^a
Pusa Rohini (T4)	0.56	0.45	0.50 ^b
PKM-1 (T5)	0.52	0.43	0.48 ^c
Arka Vikas (T6)	0.44	0.32	0.38 ^d
Mean (D)	0.63 ^a	0.54 ^b	

C.D.(p≤0.05)	P=0.036, D=0.021, P×D=18.76
SE(m)	0.017
CV	5.182

Table 4: Effect of heat stress on lycopene content in different tomato genotypes expressed in mg g-1 FW

Genotypes	Lycopene (mg g-1 FW)		
	Control (C)	Stress (H)	MEAN (P)
Kashi Vishesh (T1)	9.80 ^c	8.65 ^b	9.23 ^b
Vellayani Vijay (T2)	13.88 ^a	12.73 ^a	13.31 ^a
Anagha (T3)	10.10 ^b	8.06 ^c	9.08 ^c
Pusa Rohini (T4)	9.80 ^c	5.08 ^d	7.44 ^d
PKM-1 (T5)	8.97 ^d	4.96 ^e	6.96 ^e
Arka Vikas (T6)	5.51 ^e	4.32 ^f	4.92 ^f
Mean (D)	9.68 ^a	7.30 ^b	
C.D.(p≤0.05)	P=0.709, D=0.409, P×D=1.003		
SE(m)	0.344		
CV	7.011		

Table 5: Effect of heat stress on the intensity of fruit drop in different tomato genotypes expressed in %

Genotypes	Intensity of fruit drop (%)		
	Control (C)	Stress (H)	MEAN (P)
Kashi Vishesh (T1)	6.32	16.72	11.52 ^c

Vellayani Vijay (T2)	7.57	15.73	11.65 ^c
Anagha (T3)	8.40	14.53	11.46 ^c
Pusa Rohini (T4)	29.58	42.09	35.84 ^b
PKM-1 (T5)	27.12	45.40	36.26 ^b
Arka Vikas (T6)	41.34	57.87	49.60 ^a
Mean (D)	20.06 ^b	32.06 ^a	
C.D.(p≤0.05)	P=5.313, D=3.067, PxD=N.A.		
SE(m)	2.574		
CV	17.112		

Table 6: Effect of heat stress on number of fruits per plant (NFP) in different tomato genotypes expressed in numbers

Genotypes	NFP		
	Control (C)	Stress (H)	MEAN (P)
Kashi Vishesh (T1)	64.00 ^a	50.67 ^b	57.33 ^a
Vellayani Vijay (T2)	64.67 ^a	45.33 ^c	55.00 ^a
Anagha (T3)	54.00 ^b	35.67 ^d	44.83 ^b
Pusa Rohini (T4)	22.67 ^e	8.33 ^{gn}	15.50 ^c
PKM-1 (T5)	15.33 ^t	7.33 ^{gn}	11.33 ^d
Arka Vikas (T6)	11.33 ^g	4.33 ^h	7.83 ^e
Mean (D)	38.67 ^a	25.28 ^b	
C.D.(p≤0.05)	P=3.411, D=1.969, PxD=4.824		

SE(m)	1.653
CV	8.953

Table 7: Effect of heat stress on yield per plant in different tomato genotypes expressed in g

Genotypes	Yield per plant (g)		
	Control (C)	Stress (H)	MEAN (P)
Kashi Vishesh (T1)	2851.06 ^a	1791.16 ^c	2321.11 ^a
Vellayani Vijay (T2)	2952.06 ^d	2068.44 ^d	2510.25 ^d
Anagha (T3)	2537.59 ^b	1541.47 ^{cd}	2039.53 ^b
Pusa Rohini (T4)	996.99 ^e	399.58 ^f	698.29 ^c
PKM-1 (T5)	755.06 ^e	204.11 ^g	479.59 ^d
Arka Vikas (T6)	418.13 ^f	48.25 ^g	233.19 ^e
Mean (D)	1647.31 ^a	913.34 ^b	
C.D.(p≤0.05)	P=203.837, D=117.685, P×D=288.268		
SE(m)	98.763		
CV	13.361		

Table 8: Effect of heat stress on root-shoot ratio in different tomato genotypes

Genotypes	R:S Ratio		
	Control (C)	Stress (H)	MEAN (P)
Kashi Vishesh (T1)	0.33 ^g	0.55 ^{de}	0.44 ^d
Vellayani Vijay (T2)	0.32 ^g	0.62 ^{de}	0.47 ^d

Anagha (T3)	0.45 ^{ef}	0.80 ^{ab}	0.63 ^{ab}
Pusa Rohini (T4)	0.52 ^{de}	0.89 ^{cd}	0.59 ^{bc}
PKM-1 (T5)	0.55 ^{de}	0.62 ^a	0.70 ^a
Arka Vikas (T6)	0.61 ^g	0.70 ^{bc}	0.50 ^{cd}
Mean (D)	0.41 ^b	0.69 ^a	
C.D.(p≤0.05)	P=0.099, D=0.057, PxD=0.14		
SE(m)	0.048		
CV	14.955		

Table 9: Effect of heat stress on root dry weight in different tomato genotypes

Genotypes	Root DW (g)		
	Control (C)	Stress (H)	MEAN (P)
Kashi Vishesh (T1)	0.59 ^e	1.72 ^c	1.16 ^c
Vellayani Vijay (T2)	0.31 ^f	1.29 ^d	0.80 ^d
Anagha (T3)	0.87 ^a	2.60 ^a	1.74 ^a
Pusa Rohini (T4)	1.40 ^d	1.72 ^c	1.56 ^{ab}
PKM-1 (T5)	0.66 ^a	1.56 ^{cd}	1.11 ^c
Arka Vikas (T6)	0.77 ^e	2.32 ^b	1.53 ^b
Mean (D)	0.76 ^b	1.87 ^a	
C.D.(p≤0.05)	P=0.198, D=0.114, PxD=0.28		

SE(m)	0.096
CV	12.634

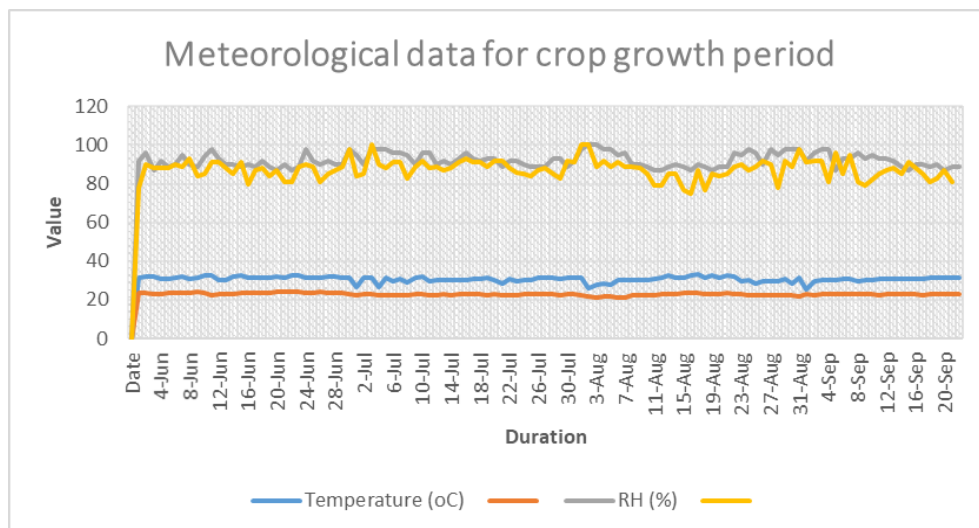


Figure 1: Meteorological data during crop growth period including temperature (°C) and RH (%)

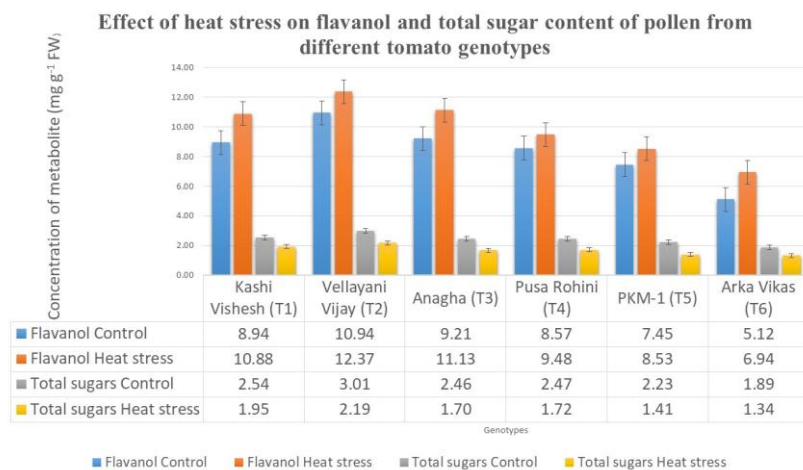


Figure 2: Effect of heat stress on flavanol and total sugar content of pollen from different tomato genotypes